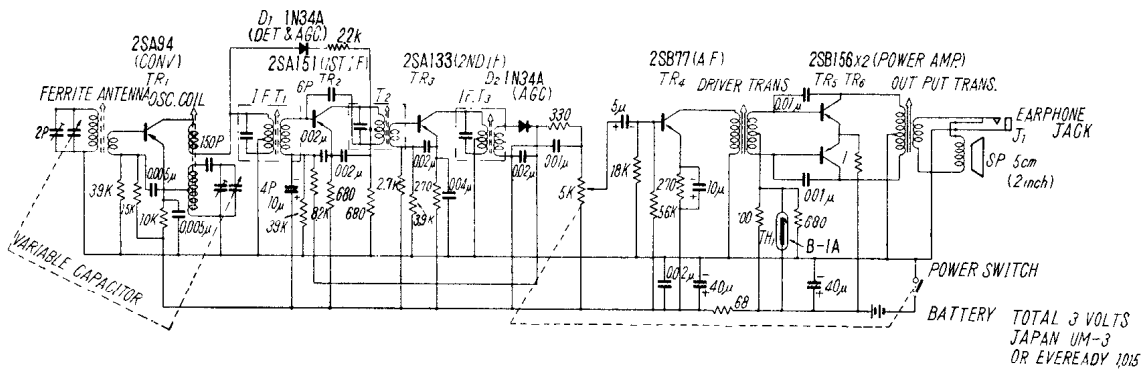


VOLUME R-22, MOST-OFTEN-NEEDED 1962 RADIO SERVICING INFORMATION

**Hitachi, Ltd. Model TH-660 Circuit Schematic Diagram**

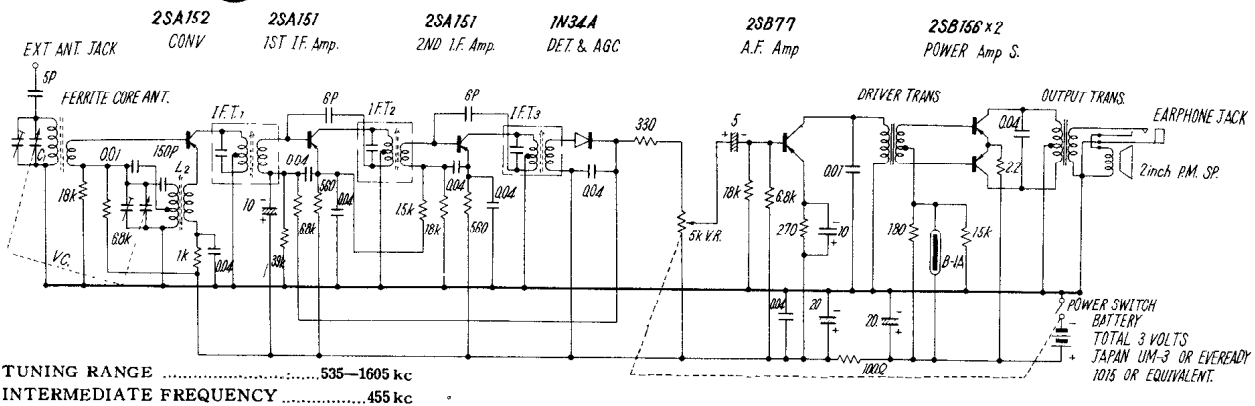


**SPECIFICATIONS :**

DIMENSIONS ..... 2 1/4" W x 3 1/2" H x 1 1/2" D  
 WEIGHT ..... 7 ozs. including batteries  
 TUNING RANGE ..... 535-1605 kc  
 INTERMEDIATE FREQUENCY ..... 455 kc  
**TRANSISTOR COMPONENTS :**  
 Hitachi Transistor, 2SA94 (Converter)  
 Hitachi Transistor, 2SA151 (I. F. Amp., 1st. stages)  
 Hitachi Transistor, 2SA133 (2nd stages)  
 Hitachi Transistor, 2SB77 (A. F. Amp.)  
 Hitachi Transistor, 2SB156x2 (Push-pull Power Amp.)

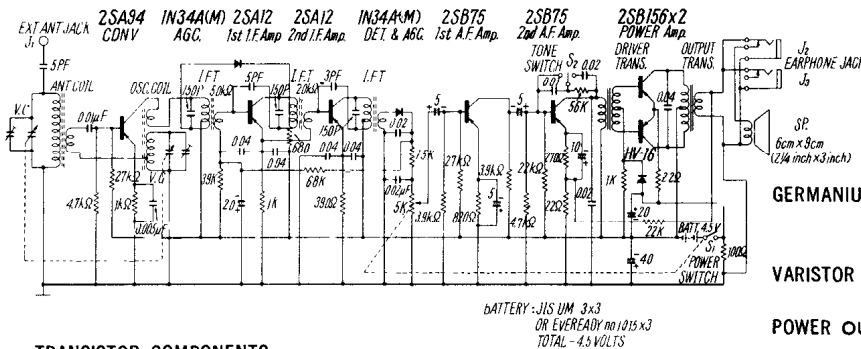
GERMANIUM DIODE ..... Hitachi Crystal Diode. 1N34A  
 (2nd Detector, and Automatic Volume Controller)  
 THERMISTOR ..... Hitachi Thermistor, B-1A  
 (Temperature Compensator)  
 POWER OUTPUT ..... 100 mW (Undistorted)  
 150mW (Maximum)  
 LOUD SPEAKER ..... 2inch P. M. Speaker  
 EL-214 can be plugged in.  
**RECOMMENDED BATTERIES** ..... EVEREADY 1015 or its equivalent

**Hitachi, Ltd. Model TH-661 Circuit Schematic Diagram**



TUNING RANGE ..... 535-1605 kc  
 INTERMEDIATE FREQUENCY ..... 455 kc

**HITACHI 7-Transistor Portable Radio TH-759**



**TRANSISTOR COMPONENTS :**

Hitachi Transistor, 2SA 94 (MIX.)  
 Hitachi Transistor, 2SA12x2, (I.F. Amp., 2-stage)  
 Hitachi Transistor, 2SB75x2, (A.F. Amp., 2-stage)  
 Hitachi Transistor, 2SB156x2, (Push-pull Power Amp.)

GERMANIUM DIODE .... Hitachi Crystal Diode, 1N34A (M) x 2  
 (Detector and Automatic Volume Controller)  
 VARISTOR ..... Hitachi Varistor, HV 16 (Temperature and Voltage Compensator)  
 POWER OUTPUT ..... 150 mW (Undistorted)  
 180 mW (Maximum)  
 LOUD SPEAKER ..... 3 inch x 2 1/4 inch P.M. Speaker.  
 EARPHONE JACK ..... Hitachi Magnetic Earphone, EL-219, can be plugged in.  
**RECOMMENDED BATTERY** .... EVEREADY 1015 or its equivalent.