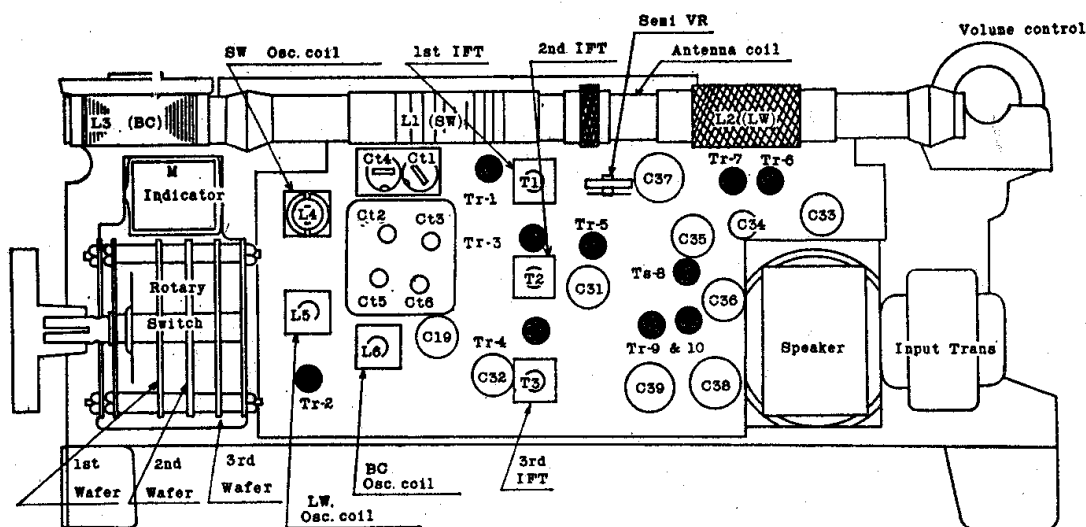


SANYO

Model 10L-P10



LAY-OUT
DIAGRAM—
SANYO
MODEL
10L-P10

General Description: Ten-transistor, three-waveband compact portable receiver. 6-volt battery (four 1.5-volt cells).

Wavebands: L.W. 150-400 kc/s.; M.W. 535-1605 kc/s.; S.W. 3.9-12 Mc/s.

Notes: Tr1 is separate local oscillator; Tr5 is an A.G.C. amplifier. In later production C6 0.01 μ F., C45 0.01 μ F., C3 omitted, C37 200 μ F., C27 10 pF., C22 13 pF.

Alignment: I.F. 470 kc/s. (T3, T2, T1); L.W. 405 kc/s. (L5); 145 kc/s. (Ct5); 380 kc/s. (L2); 180 kc/s. (Ct2); M.W. 530 kc/s. (L6); 1650 kc/s. (Ct6); 600 kc/s. (L3); 1400 kc/s. (Ct3); S.W. 3.8 Mc/s. (L4); 12.5 Mc/s. (Ct4); 4.2 Mc/s. (L1); 11.5 Mc/s. (Ct1).

