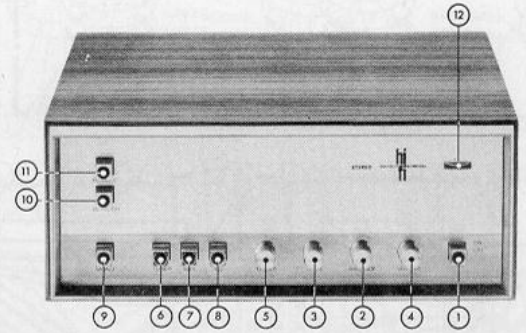


PHILIPS

Service

STEREO AMPLIFIER

22GH943/00/00Z/16/16Z/22/22Z



TRA 3231



1 Mains switch
Netschakelaar
Interrupteur secteur
Netzschalter
Interruptor de red.

SK-F
SK-G

5 Treble control
Hogetonenregelaar
Commande des aigus
Höheneinsteller
Regulador de tonos agudos

R589

9 Mono/stereo switch
Mono/stereo-schakelaar
Commutateur mono/stéréo
Mono/Stereo-Schalter
Commutador mono/estereo

SK-C

2 Balance control
Balans regelaar
Commande d'équilibre
Symmetrie-einsteller
Regulador de equilibrio

R569

6 Tuner switch
Tuner schakelaar
Commande de syntonisation
Abstimm-schalter
Commutador de sintonizador

SK-A

10 Scratch filter switch
Scratch filter schakelaar
Commutateur de filtre anti souffle
Geräuschfilter
Commutador de filtro de crujidos

SK-X

3 Bass control
Lagetonenregelaar
Commande des basses
Basseinsteller
Regulador de tonos graves

R573

7 Recorder switch
Recorder schakelaar
Commande de magnétophone
Tonbandgeräteschalter
Commutador de magnétofono

SK-B

11 Rumble filter switch
Rumble filter schakelaar
Commutateur du filtre de ronflement
Rumpelfilterschalter
Commutador de filtro de "rumble"

SK-Y

4 Volume control
Volumeregelaar
Commande de volume
Lautstärkeinsteller
Regulador de volumen

R583

8 Record player switch
P. U. -schakelaar
Commande P. U.
Plattenspieler-schalter
Commutador de tocadiscos

12 Mains indicator
Netindikator
Indicateur secteur
Netzindikator
Indicador de red.

LA423

Mains voltages 110-127-220-240 V_~
Output impedance 4 Ω, 8 Ω
Output power 2x7W d ≤ 2 % (8Ω)
Power consumption 7-35 W

Dimensions 340x140x210 mm
Frequency range 20-20.000 Hz

Sensitivity for 7 W per channel:
M. D. Rec. player 1 mV-47 kΩ
Cristal Rec. player 40 mV-220 kΩ

Tuner 40 mV-30 kΩ

Tape recorder 110 mV-70 kΩ

Netspanningen
Uitgangsimpedantie
Uitgangsvermogen
Verbruik

Afmetingen
Frekwentiebereg

Gevoeligheid voor 7 W per kanaal:
M. D. P. U. 1 mV-47 kΩ
Kristal P. U. 40 mV-220 kΩ

Tuner 40 mV-30 kΩ

Magnetofon 110 mV-70 kΩ

Tensions secteur
Impédance de sortie
Puissance de sortie
Consommation

Dimensions
Gamme de fréquence

Sensibilité pour 7 W par canal:
P. U. -M. D. 1 mV-47 kΩ
P. U. à cristal 40 mV-220 kΩ

Tuner 40 mV-30 kΩ

Magnétophone 110 mV-70 kΩ

Netzspannungen
Ausgangsimpedanz
Ausgangsleistung
Verbrauch

Abmessungen
Frequenzbereich 340x140x210 mm
20-20.000 Hz

Empfindlichkeit für 7 W je Kanal:
M. D. Plattenspieler 1 mV-47 kΩ
Kristal-Plattenspieler 40 mV-220 kΩ

Abstimmvorrichtung 40 mV-30 kΩ

Tonbandgerät 110 mV-70 kΩ

Tensiones de red
Impedancia de salida
Potencia de salida
Consumo

Dimensiones
Margen de frecuencia
Sensibilidad para 7 W por canal:
Fonocaptor magnetofono
Fonocaptor de cristal

Sintonizador

Magnetófono

Transistors - Diodes

TS401,402 - BC109/04
TS403,404 - AC126
TS405,406 - AC172

TS407,408 - AC125
TS409ab - AC127-132/81
TS410ab - AC127-132/81

TS411ab - 2-AD149
TS412ab - 2-AD149
GR417,418 - BY114

CS15628

SERVICE INFORMATION									
---------------------	--	--	--	--	--	--	--	--	--

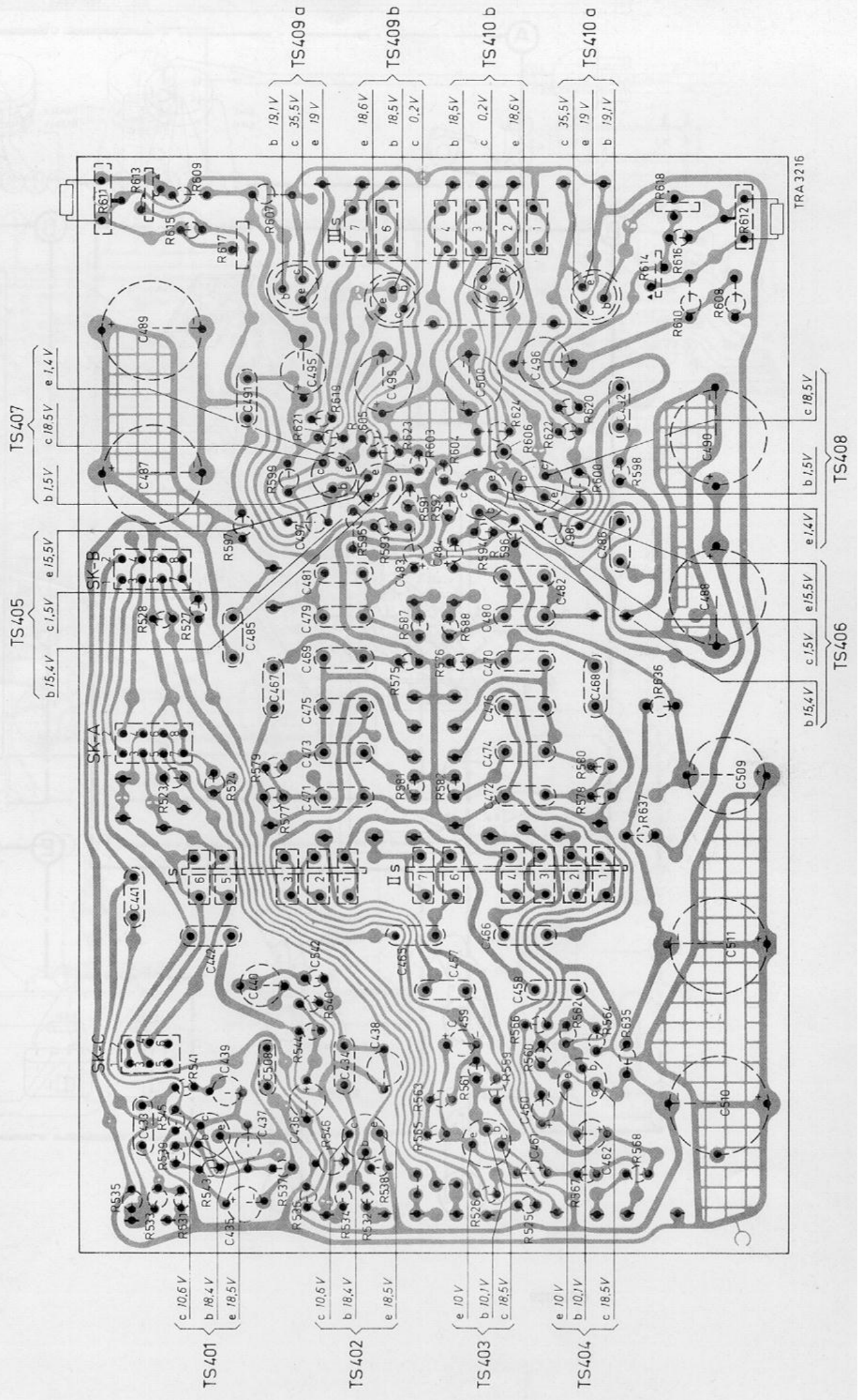
HFD/

Copyright Central Service N.V. PHILIPS' GLOEILAMPENFABRIEKEN, Eindhoven

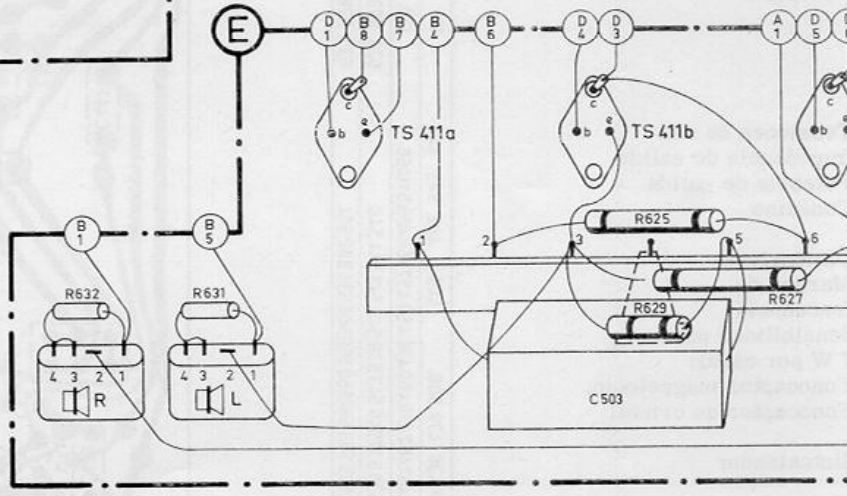
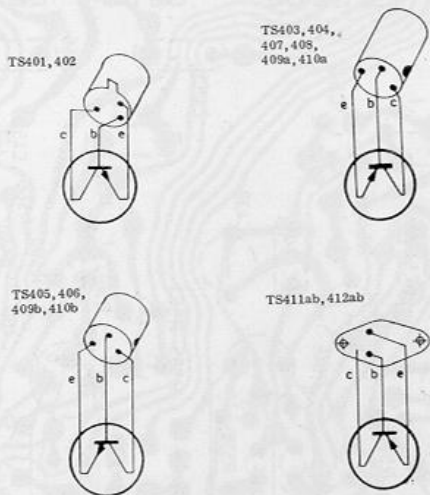
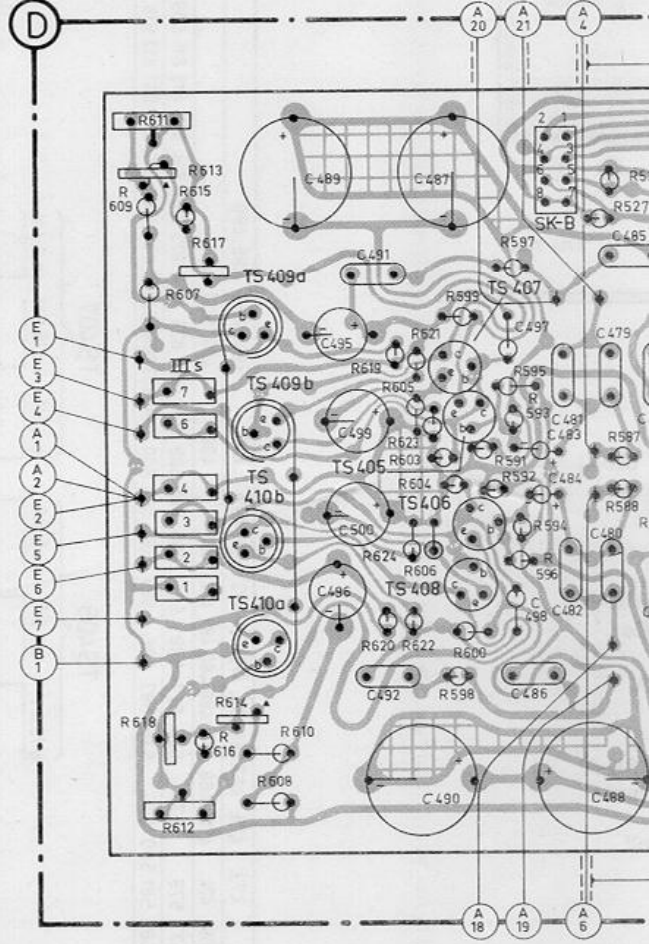
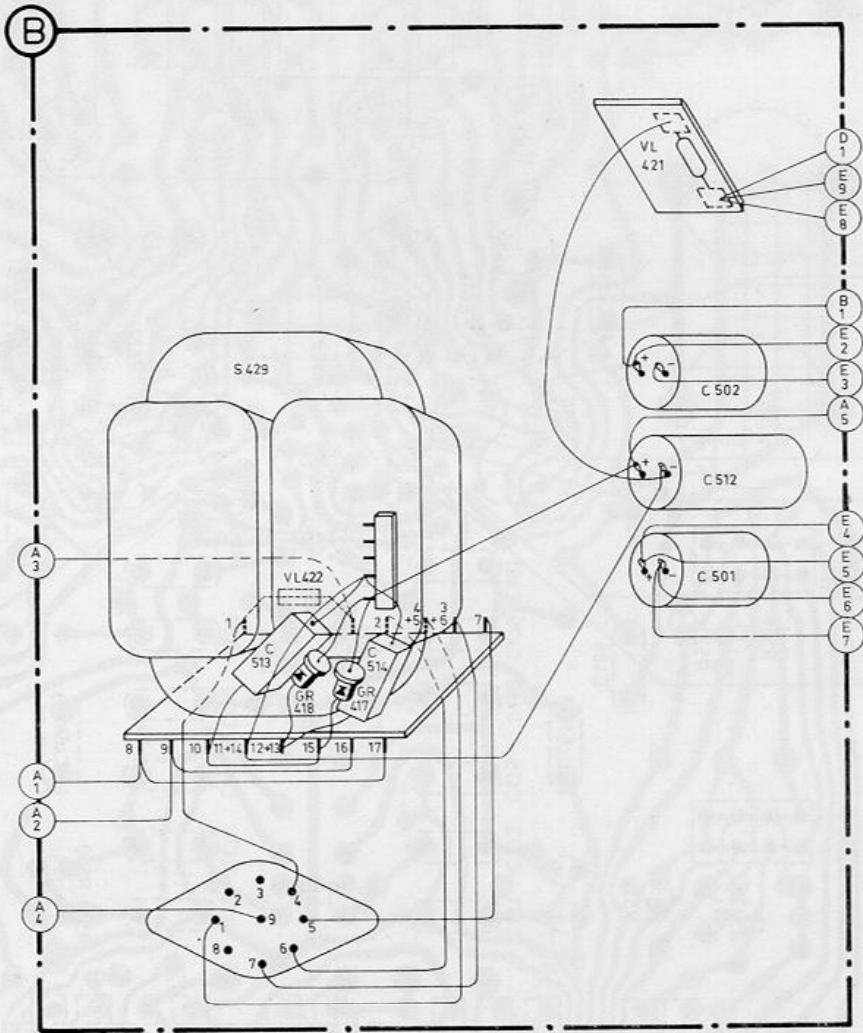
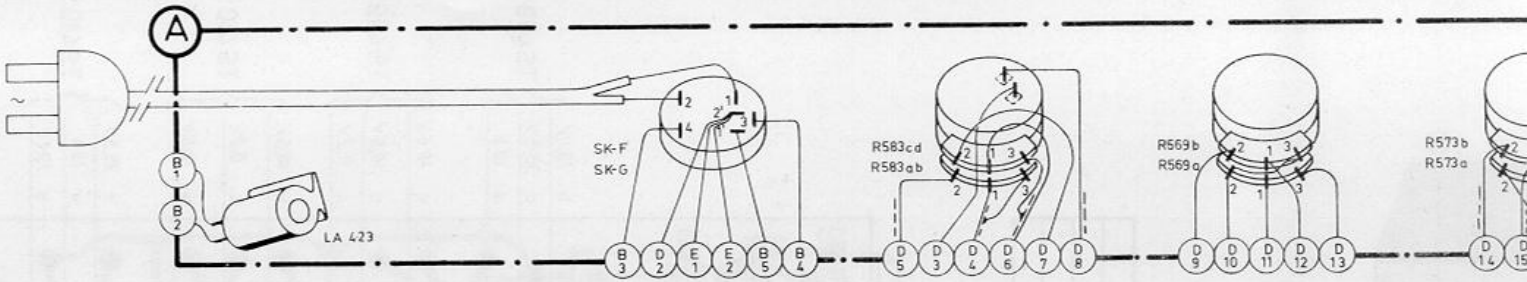
4822 725 1.0251

Confidential information for Philips Service Dealers

C	435	433	437	436	439	508	440	442	542	441	471	473	475	467	459	485	479	481	483	498	497	487	491	499	495	489													
C		510	461	462	438	460	434	459	457	458	485	511	466	472	509	474	476	468	470	488	480	482	484	486	490	492	500	496											
R	536	534	531	532	533	535	537	546	543	539	545	541	544	540	524	523	577	579	575	528	527	588	594	595	591	599	621	605	623	624	610	614	613	615	611	609			
R	525	526	567	538	568	565	563	561	560	559	566	635	562	564	637	578	582	581	580	576	636	587	596	597	593	592	600	598	603	606	604	622	620	608	616	617	607	612	618



C			502 512.			489 495 499 491	487 497 498 483 481 479
C	513	514.	501.			496 500 492 503	490 486 484 482 480
R				583cd	609.611.615.613.614.610.619.624.569b	623.605.621.625.599	591.595.627.573b.594.588.527.5
R				632.	631. 583ab	618.612.607.617.616.608.620.622.569a	604.606.603.629.598.600.592.593.573a.597.596.587



Wiring example: Wire $\begin{matrix} E \\ 3 \end{matrix}$ (mentioned under unit B) leads to unit E, marked $\begin{matrix} B \\ 3 \end{matrix}$.

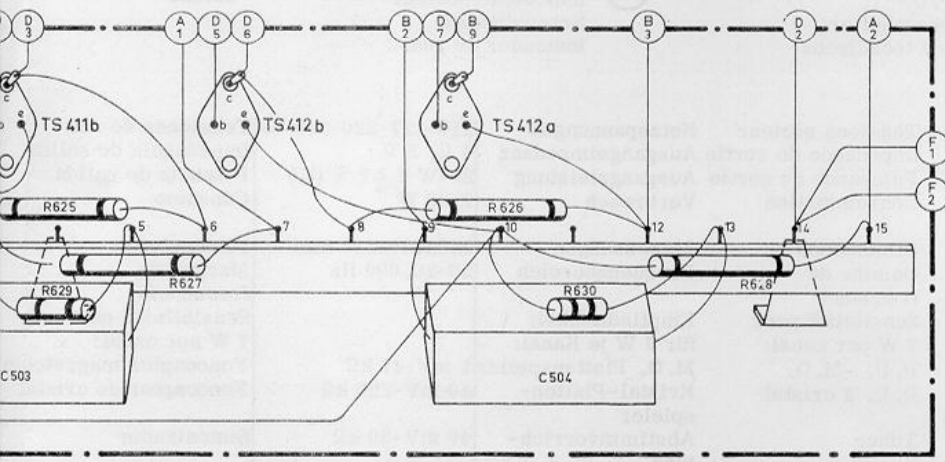
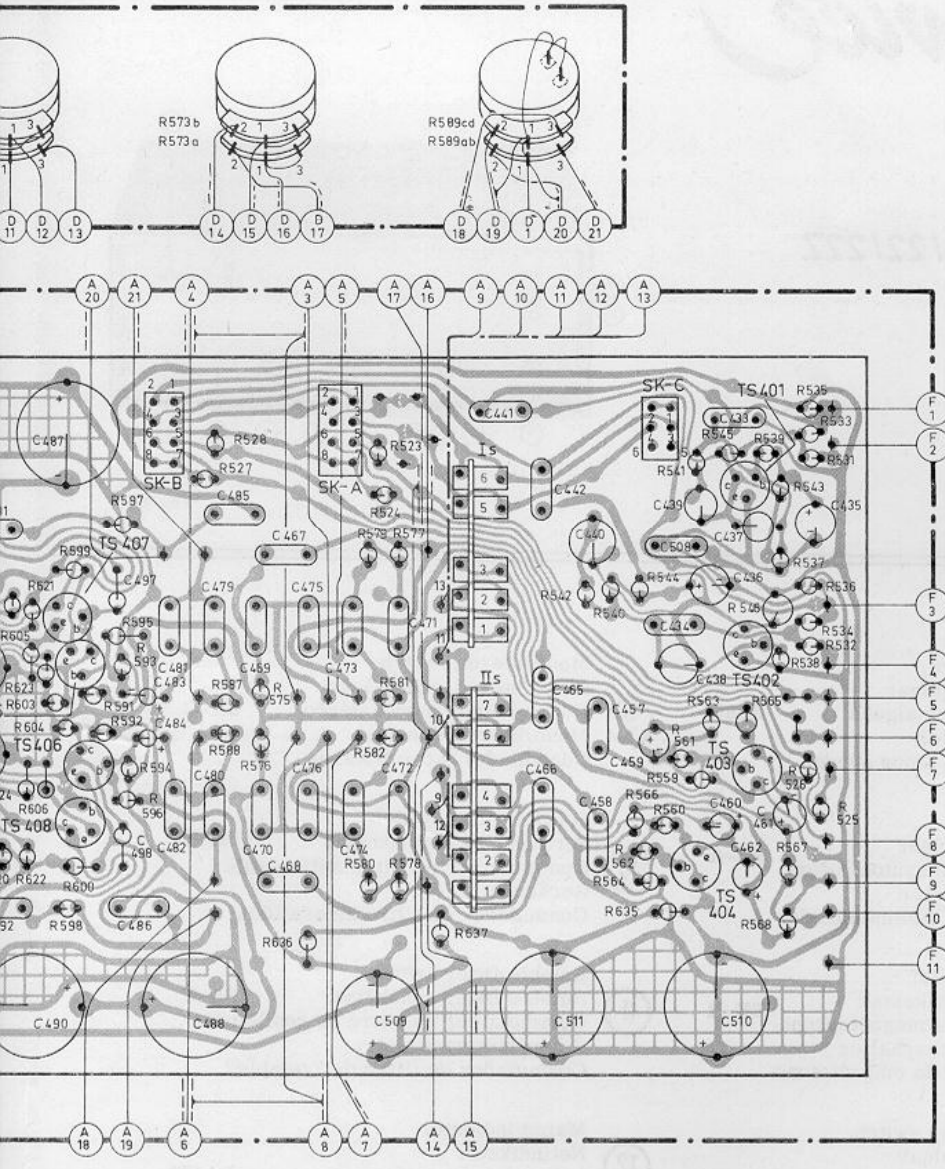
Voorbeeld bedrading: Draad $\begin{matrix} E \\ 3 \end{matrix}$ (genoemd bij unit B) gaat naar unit E, $\begin{matrix} B \\ 3 \end{matrix}$ genummerd.

Exemple de câblage: Le fil $\begin{matrix} E \\ 3 \end{matrix}$ (mentionné sans bloc B) va vers la bobine numérotée $\begin{matrix} B \\ 3 \end{matrix}$.

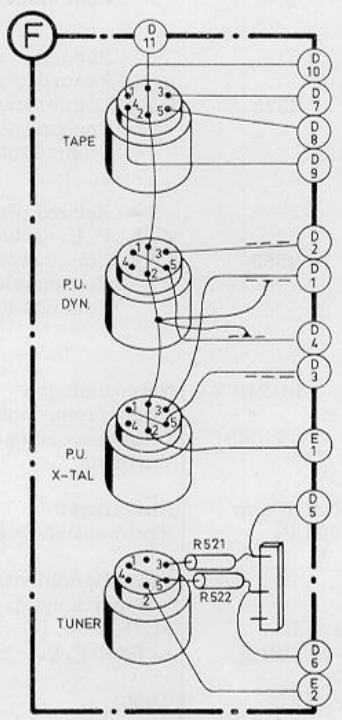
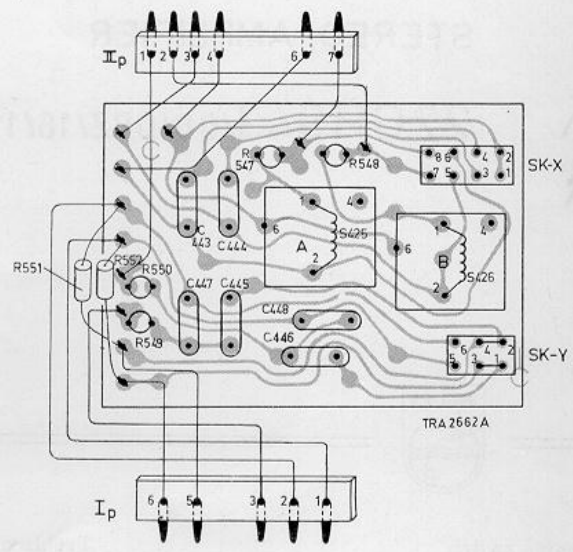
Verdrahtungsbeispiel: Draht $\begin{matrix} E \\ 3 \end{matrix}$ (bei Einheit B genannt) führt nach E dort mit $\begin{matrix} B \\ 3 \end{matrix}$ nummeriert.

Ejemplo de cableado: El hilo $\begin{matrix} E \\ 3 \end{matrix}$ (mencionado en la unidad B) va hacia y allí está marcado con $\begin{matrix} B \\ 3 \end{matrix}$.

491	487	497	498	483	481	479	485	469	467	475	473	471	441	542	442	440	508	439	436	437	433	435	C							
492	503	490	486	484	482	480	488	470	468	476	474	509	472	466	511	504	465	458	457	459	434	460	438	462	461	510	C			
5621	625	599	591	595	627	573	594	588	577	528	575	579	577	523	524	589	cd	626	630	539	+ 545	635	566	628	531	+ 536	525	R		
5603	629	598	600	592	593	573	q	597	596	587	636	576	580	581	582	578	637	589	a	b	559	- 564	565	568	546	567	526	521	522	R



S		A	B
C	443, 447, 444, 445, 448, 446,		
R	551, 552, 550, 549,	547	548



TRA 3221.

mentioned under unit B) leads to unit E, and is then
 (genoemd bij unit B) gaat naar unit E, en is daar
 (mentionné sans bloc B) va vers le bloc E, où il est
 (bei Einheit B genannt) führt nach Einheit E und ist
 (mencionado en la unidad B) va hacia la unidad E

Cabinet -/..	4822 447 50039	Gehäuse -/..	4822 447 50039	Caja -/..	4822 447 50039
Cabinet -/..z	4822 447 50042	Gehäuse -/..z	4822 447 50042	Caja -/..z	4822 447 50042
Lens	4822 381 10037	Linse	4822 381 10037	Vidrio	4822 381 10037
Foot	4822 462 70362	Fuss	4822 462 70362	Pata	4822 462 70362
Front panel (complete)	4822 447 50041	Frontplaat (kompleet)	4822 447 50041	Placa frontal (completa)	4822 447 50041
Rear panel	4822 435 50008	Achterwand	4822 435 50008	Panel posterior	4822 435 50008
Fixing bracket rear panel	4822 401 10475	Beugel voor bev. achterwand	4822 401 10475	Abrazadera fij. panel post.	4822 401 10475
Fixing spring rear panel	4822 401 10013	Veer voor bev. achterwand	4822 401 10013	Resorte fij. panel post.	4822 401 10013
Fuse holder	4822 256 30065	Smeltveiligheidshouder	4822 256 30065	Portafusibles	4822 256 30065
Voltage adapter	4822 272 10021	Spanningsomschakelaar	4822 272 10021	Adaptador de voltaje	4822 272 10021
Knob	4822 413 30331	Knop	4822 413 30331	Botón	4822 413 30331
Spring for knob	4822 492 60705	Klemveer knop	4822 492 60705	Resorte fij. botón	4822 492 60705
Push-button mains switch	4822 303 30054	Druktoets netschakelaar	4822 303 30054	Tecla -Interruptor de red	4822 303 30054
Push-button	4822 410 20758	Druktoets	4822 410 20758	Tecla	4822 410 20758
Slide switch	4822 277 30059	Schuifschakelaar	4822 277 30059	Commutador deslizante	4822 277 30059
(tuner, rec. pl., recorder)		(tuner, p. u. recorder)		(sintonizador, tocadiscos, magnetófono)	
Slider of slide switch	4822 278 20172	Schuif van schuifschakelaar	4822 278 20172	Corredera de commutador	4822 278 20172
Slide switch	4822 277 30058	Schuifschakelaar	4822 277 30058	Commutador deslizante	4822 277 30058
(mono, stereo)		(mono, stereo)		(mono, estereo)	
Slider of slide switch	4822 278 20171	Schuif van schuifschakelaar	4822 278 20171	Corredera de commutador	4822 278 20171
Slide switch	4822 277 30061	Schuifschakelaar	4822 277 30061	Commutador deslizante	4822 277 30061
(scratch)		(scratch)		(susuro)	
Slider of slide switch	4822 278 20173	Schuif van schuifschakelaar	4822 278 20173	Corredera de commutador	4822 278 20173
Slide switch	4822 277 30062	Schuifschakelaar	4822 277 30062	Commutador deslizante	4822 277 30062
(rumble)		(rumble)		(rurnunco)	
Slider of slide switch	4822 278 20174	Schuif van schuifschakelaar	4822 278 20174	Corredera de commutador	4822 278 20174
Mains switch (assy)	4822 276 10294	Netschakelaar (kompleet)	4822 276 10294	Interruptor de red (completo)	4822 276 10294
Mains switch	4822 276 10041	Netschakelaar	4822 276 10041	Interruptor de red	4822 276 10041
Fixing spring for slider		Veer voor bev. schuif		Resorte fij. corredera	
Coupling pin for slider		Pen voor bev. schuif		Perno de acoplamiento de	
Coupling piece for slider		Koppelstuk voor schuif		corredera	
				Acoplamiento para corredera	
Push-button unit (4 push b.)	4822 276 40133	Druktoetsseenheid (4 drukt.)	4822 276 40133	Unidad de teclas (4 teclas)	4822 276 40133
Push-button unit (2 push b.)	4822 276 20097	Druktoetsseenheid (2 drukt.)	4822 276 20097	Unidad de teclas (2 teclas)	4822 276 20097
Socket 5 pole	4822 267 40039	Aansluiting 5 polig	4822 267 40039	Enchufe, 5 polos	4822 267 40039
Plug 5 pole	4822 264 40023	Steker 5 polig	4822 264 40023	Clavija, 5 polos	4822 264 40023
Socket L. S.	4822 267 30055	Aansluiting L. S.	4822 267 30055	Enchufe altavoz	4822 267 30055
Plug, L. S.	4822 264 30041	Steker L. S.	4822 264 30041	Clavija altavoz	4822 264 30041
Cap over AD149	4822 462 70137	Kapje over AD149	4822 462 70137	Cubierta de AD149	4822 462 70137
Cap over mains switch	4822 462 70017	Kapje over netschakelaar	4822 462 70017	Cubierta de interruptor de red	4822 462 70017
Lamp holder	4822 255 10007	Lamphouder	4822 255 10007	Portalámparas	4822 255 10007
Mica insulation plate AD149	4822 466 70156	Mica isolatieplaat AD149	4822 466 70156	Placa aislante de mica AD149	4822 466 70156
Insulation tube for AD149	4822 532 50695	Isolatiebuisje voor AD149	4822 532 50695	Tube aislante para AD149	4822 532 50695
Fuse in mains transformer	4822 252 20001	Smeltveiligheid in nettrans- formator	4822 252 20001	Fusible en transformador de red	4822 252 20001
Fuse 1, 4 A	4822 253 20021	Smeltveiligheid 1, 4 A	4822 253 20021	Fusible 1, 4 A	4822 253 20021
Pilot lamp 6 V-50 mA	4822 134 40003	Indikatielamp 6 V-50 mA	4822 134 40003	Lámpara piloto, 6 V-50 mA	4822 134 40003
"Rumble" coil (S425, 426)	4822 156 20289	"Rumble" spoel (S425, 426)	4822 156 20289	Bobina de "rumble" (S425, 426)	4822 156 20289
Mains transformer (S429)	4822 146 30216	Nettransformator (S429)	4822 146 30216	Transformador de red (S429)	4822 146 30216
C437, 438	4822 121 50258	R569	4822 101 80015	R617, 618	4822 116 30011
C439, 440	4822 121 50367	R573	4822 102 30093	R625, 626	4822 113 60056
C497, 498	4822 121 50029	R583	4822 102 30075	R627, 628	4822 113 60056
C501, 502	4822 124 40011	R589	4822 101 80016	R631, 632	4822 113 80067
C503, 504	4822 121 40044	R591, 592	4822 116 60002	R635	4822 111 50234
C512	4822 124 70017	R611, 612	4822 100 10021	R636	4822 111 30113
C513, 514	4822 121 40098	R613, 614	4822 116 20063	R637	4822 111 30108