

BX297U

WEERSTANDEN - RESISTANCES - RESISTANCES - WIDERSTANDE

R1	1000	Ohm	48 427 10/1K	R13 *	47000	Ohm	48 425 10/47K
R2	220	Ohm	49 379 62.0	R14	0,45	MOhm)	49 500 34.0
R3	430	Ohm)		R14a	0,05	MOhm)	
R4	200	Ohm)	49 364 63.0	R15	10	MOhm	48 427 10/10M
R5	180	Ohm)		R16	0,47	MOhm	48 426 10/470K
R6	10000	Ohm	48 425 10/10K	R17	0,82	MOhm	48 425 10/820K
R7 *	47000	Ohm	48 425 10/47K	R18	130	Ohm	48 427 10/150E
R9 **	22000	Ohm	48 426 10/22K	R19 *	1000	Ohm	48 425 10/1K
R11**	22000	Ohm	48 426 10/22K	R20			49 379 67.1
R12	2,7	MOhm	48 426 10/2M7	R21	56	Ohm	48 550 10/56E

CONDENSATOREN - CONDENSERS - CONDENSATEURS - KONDENSATOREN

C1	50	uF)	48 517 58/50+50	C20	6,8	pF	48 406 99/68E
C2	50	uF)		C21	30	pF	28 212 36.4
C3	12-492	pF)	49 001 33.1	C22	2400	pF	48 429 02/2K4
C4	12-492	pF)		C23	350	pF	48 406 02/390E
C5	1000	pF	48 757 20/1K	C24	115	pF	
C6	15	pF	48 406 20/15E	C25	115	pF	
C7	4700	pF	48 757 20/4K7	C26	47000	pF	48 751 20/47K
C9	47000	pF	48 750 20/47K	C27	102	pF	
C10	25	pF	49 005 49.0	C28	102	pF	
C11	25	pF	49 005 49.0	C29	3900	pF	48 751 20/3K9
C12	25	pF	49 005 49.0	C30	82	pF	48 406 10/82E
C13	330	pF	48 406 05/330E	C31	390	pF	48 406 10/390E
C14	22000	pF	48 752 20/22K	C32	6800	pF	48 751 20/68E
C15	82	pF	48 601 10/82E	C33	100	uF	48 313 22/100
C16	18000	pF	48 750 20/18K	C34	22000	pF	48 757 20/22K
C17	220	pF	48 601 10/220E	C35	100	pF	48 406 10/100E
C18	400-575	pF	49 005 55.0	C36	47	pF	48 605 10/47E
C19	15	pF	48 601 99/15E				

SPOELEN - COILS - BOBINES - SPULE

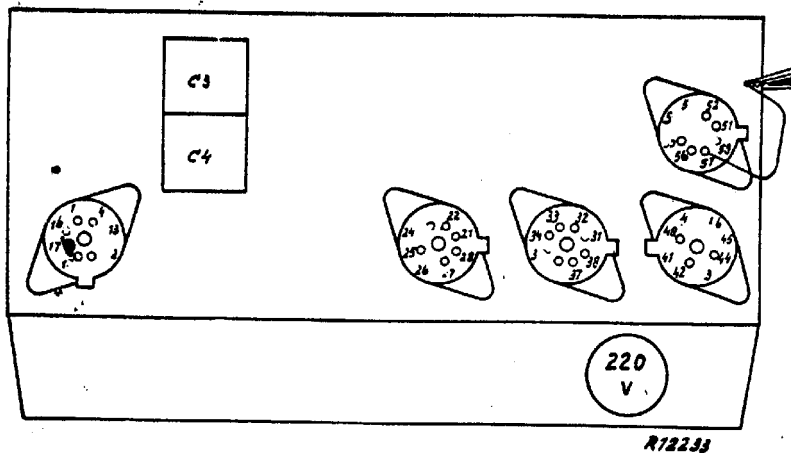
S1	1,1	Ohm		S15	3	Ohm	
S2	<1	Ohm		S16	4,5	Ohm	
S3	3,8	Ohm		S17	3	Ohm	A3 121 94.1
S4	<1	Ohm	A3 122 96.0	S18	4,5	Ohm	
S5	48	Ohm		G24			
S6	4,2	Ohm		G25			
S7	<1	Ohm					
S8	<1	Ohm		S19	2,4	Ohm	
S9	<1	Ohm		S20	9,5	Ohm	
S10	<1	Ohm		S21	2,4	Ohm	
S11	<1	Ohm	A3 122 97.0	S22	9,5	Ohm	A3 123 25.0
S12	2,6	Ohm		G27			
S13	6,8	Ohm		C28			
				S23	350	Ohm	
				S24	<1	Ohm	A3 168 88.0
				S26	18	Ohm	
				S25	9. 3	Ohm	49 981 20.0

In later series replaced by:  
Reemplazados en la ultima serie por:

- \* 48 550 10/...
- \*\* 48 552 10/...

# BX 297U

I



**R**

9	16	23	26	32	33	46													
	55	210	55	225	20	160													
10	13	14	15	25															
	230	150	230	230															
11	47	12	22	42	45	47													
	210	420	420	320	420	210													
12	17	24	27	31	34	35	36	37	57										
	10	10	10	10	10	10	10	10	10										
12																			

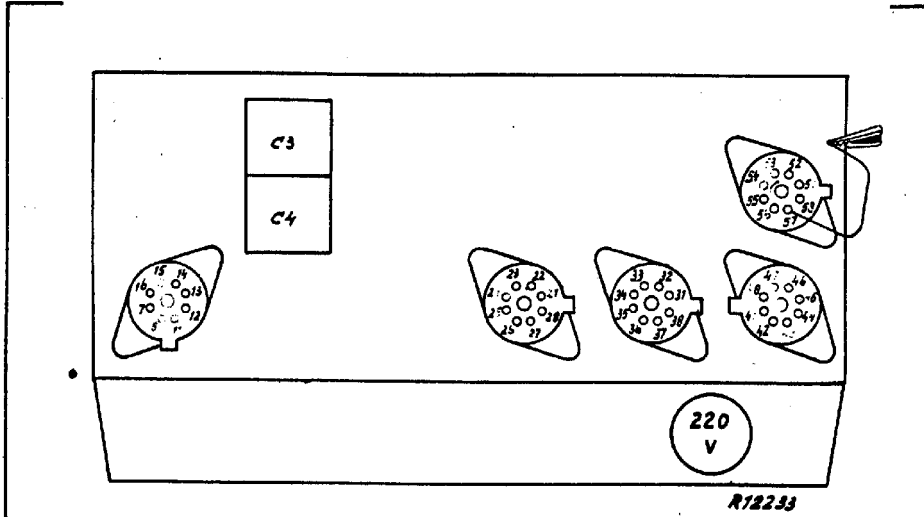
**C**

9	45	4	57							1	15	25							
	480	480	480								240	240							
10	42									12	32								
	125										185								

R 57174 GM4256

# BX 297 U

II



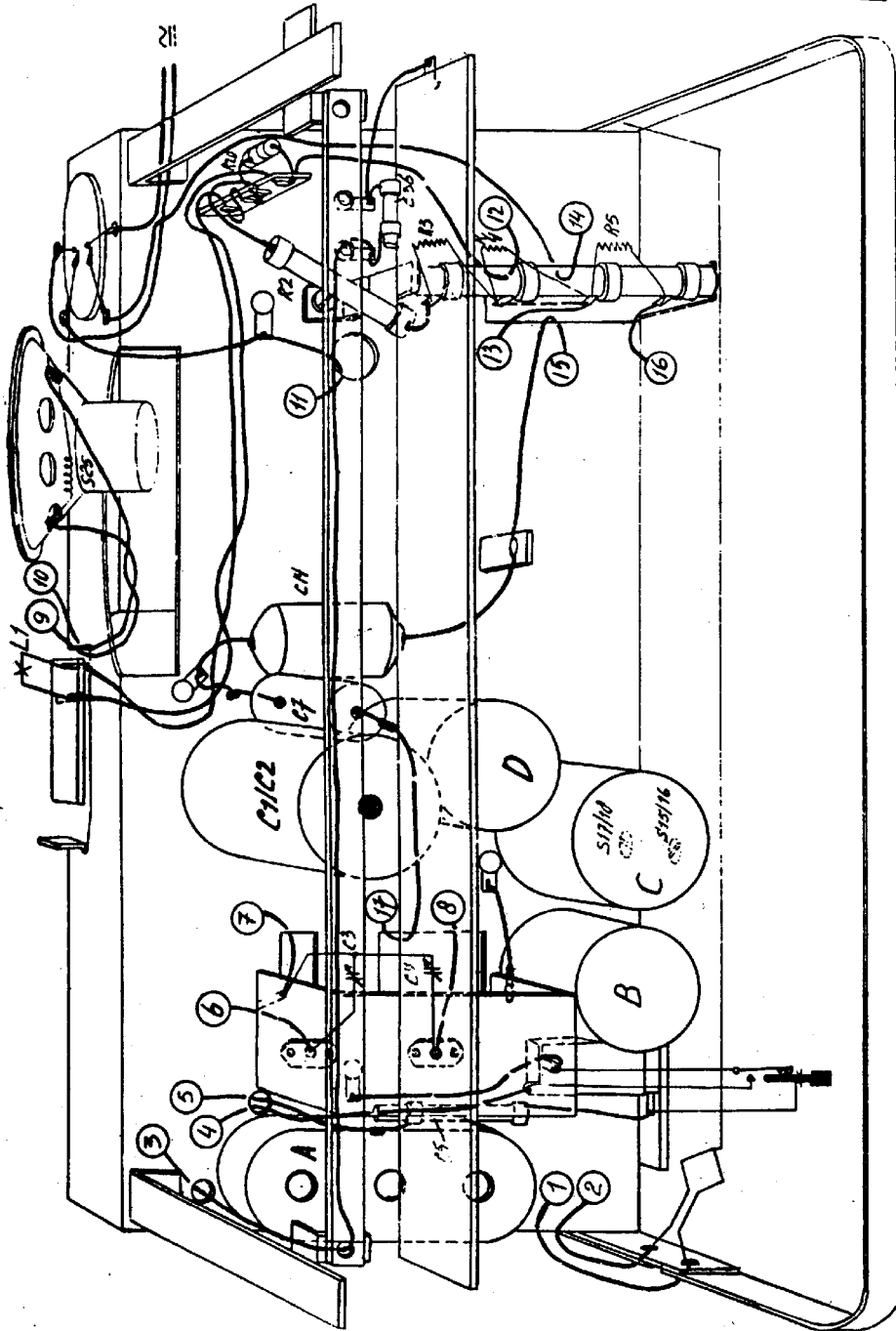
h	x1	17	24	27	31	34	35	36	37	57											
		495	495	495	495	495	495	495	495	495	495										
	x1																				
	x10	47																			
		130																			
	x10 <sup>2</sup>	12	22	42	45	47															
		170	170	295	170	390															
	x10 <sup>3</sup>																				
x10 <sup>4</sup>	13	14	15	25																	
	350	260	350	350																	
x10 <sup>5</sup>	23	32	46																		
	250	260	195																		
5x10 <sup>5</sup>	16	26	33																		
	220	22	100																		
μF	x10 <sup>-3</sup>	32									x1	42									
		280										160									
	x10 <sup>-2</sup>	15	25								x10	45	47	57							
		330	330									225	375	255							
	x10 <sup>-1</sup>																				

R 57  $\frac{1}{4}$  CM4257

R12232

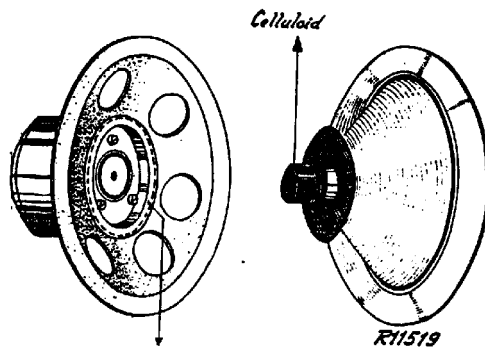
# BX 297 U

III

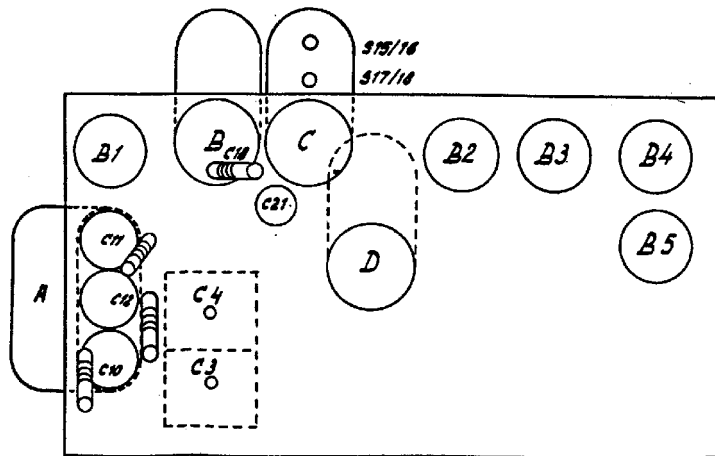


R12266





LIJM - COLLE - GLUE - LEIM - COLA



R12076

Fig 5