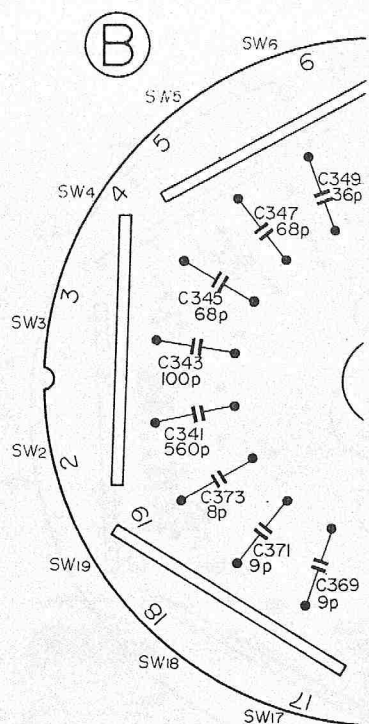
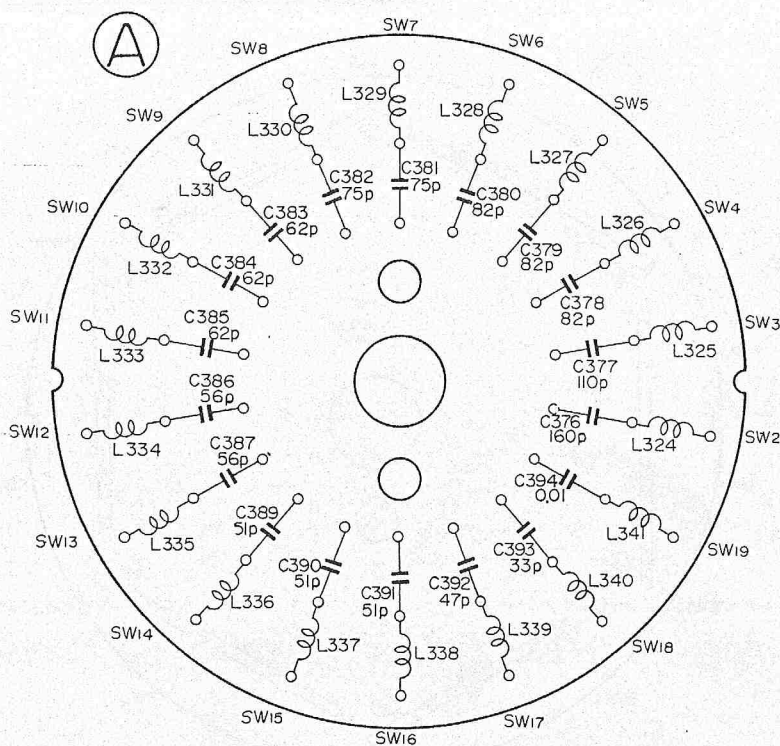


BAND	SW2~19 RF COIL				
	LB	CD	CE	CF	CT
SW2 ~ SW4	L307	C342 220P	C344 75P	C346 43P	CT3
SW5 ~ SW7	L308	C348 75P	C350 22P		CT3
SW8 ~ SW10	L309	C353 68P	C355 24P		CT3
SW11 ~ SW13	L310	C359 56P	C361 27P		CT3
SW14 ~ SW16	L311	C365 36P	C367 10P		CT3
SW17 ~ SW19	L312	C370 10P	C372 7P	C374 7P	CT3



SW2 ~ 19: 1st OSC Coil.
All coils and capacitors: Mounted on the Conductor Side.

All capacitors: Mounted on the Conductor Side.