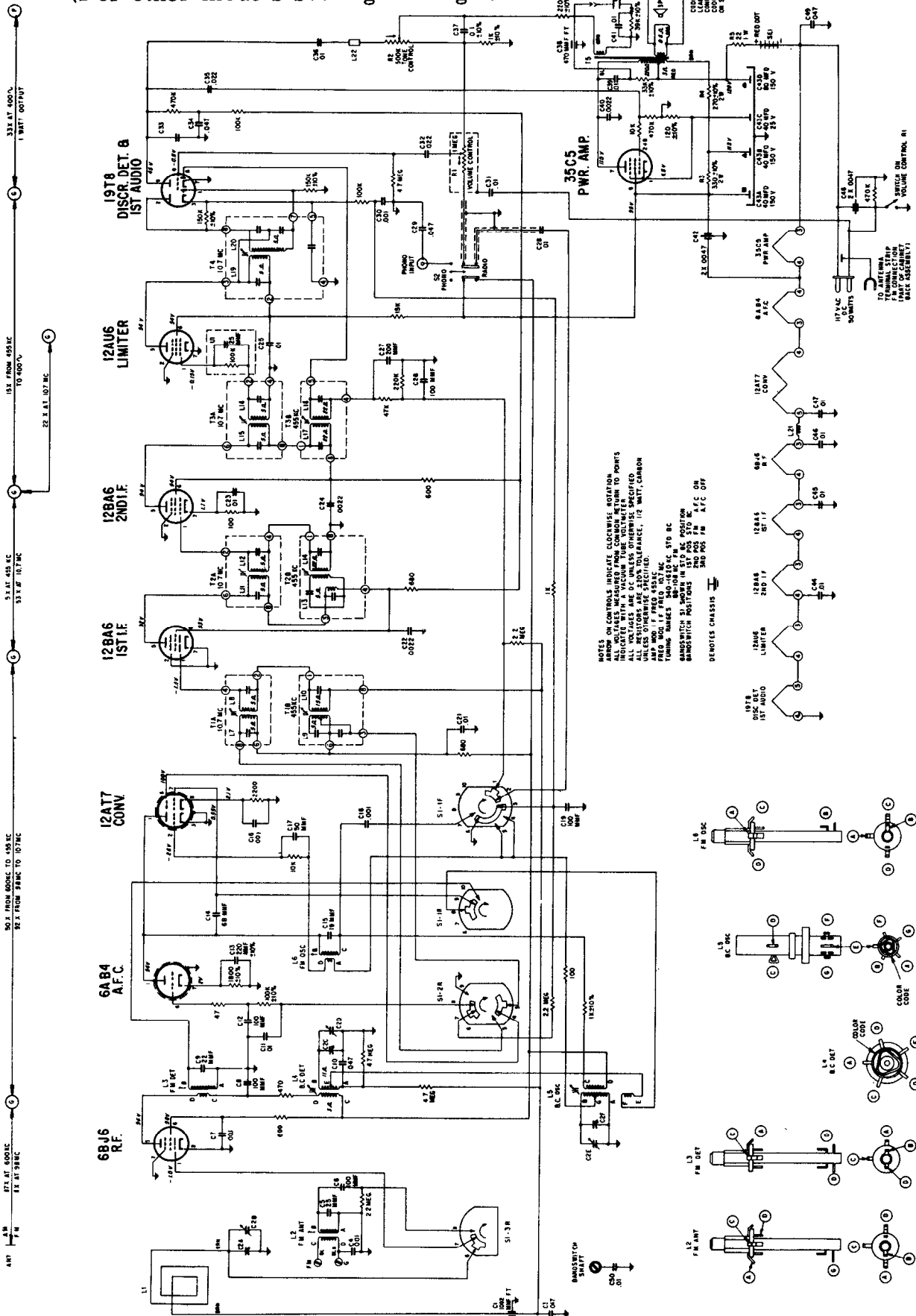
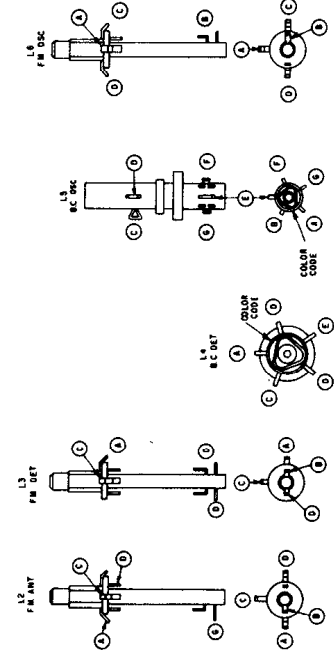


ZENITH RADIO CORPORATION
 MODEL C835R,E,H CHASSIS 8C01
 (For other models see right margin)

(Continued on page 176)



NOTES
 ARROWS ON CONTROLS INDICATE COUNTERCLOCKWISE ROTATION.
 ALL VOLTAGES ARE D.C. UNLESS OTHERWISE SPECIFIED.
 UNLESS OTHERWISE SPECIFIED, 1/2 WATT, CARBON.
 AMP MOD. 1. FREQ. 455 KC.
 TUNING RANGE 540-1650 KC. STD. BC
 BANDSWITCH 51. MOVING IN 51.7 KC. POSITION
 BANDSWITCH POSITIONS 1ST POS. STD. M. A.F.C. ON
 2ND POS. FM A.F.C. OFF
 3RD POS. FM A.F.C. OFF



Schematic above is exact for Zenith Models C835E,H,R, Chassis 8C01. For alignment see page 176. Models C845L,M,W,Y, Chassis 8C02, are practically identical.

VOLUME R-20, MOST-OFTEN-NEEDED 1960 RADIO SERVICING INFORMATION

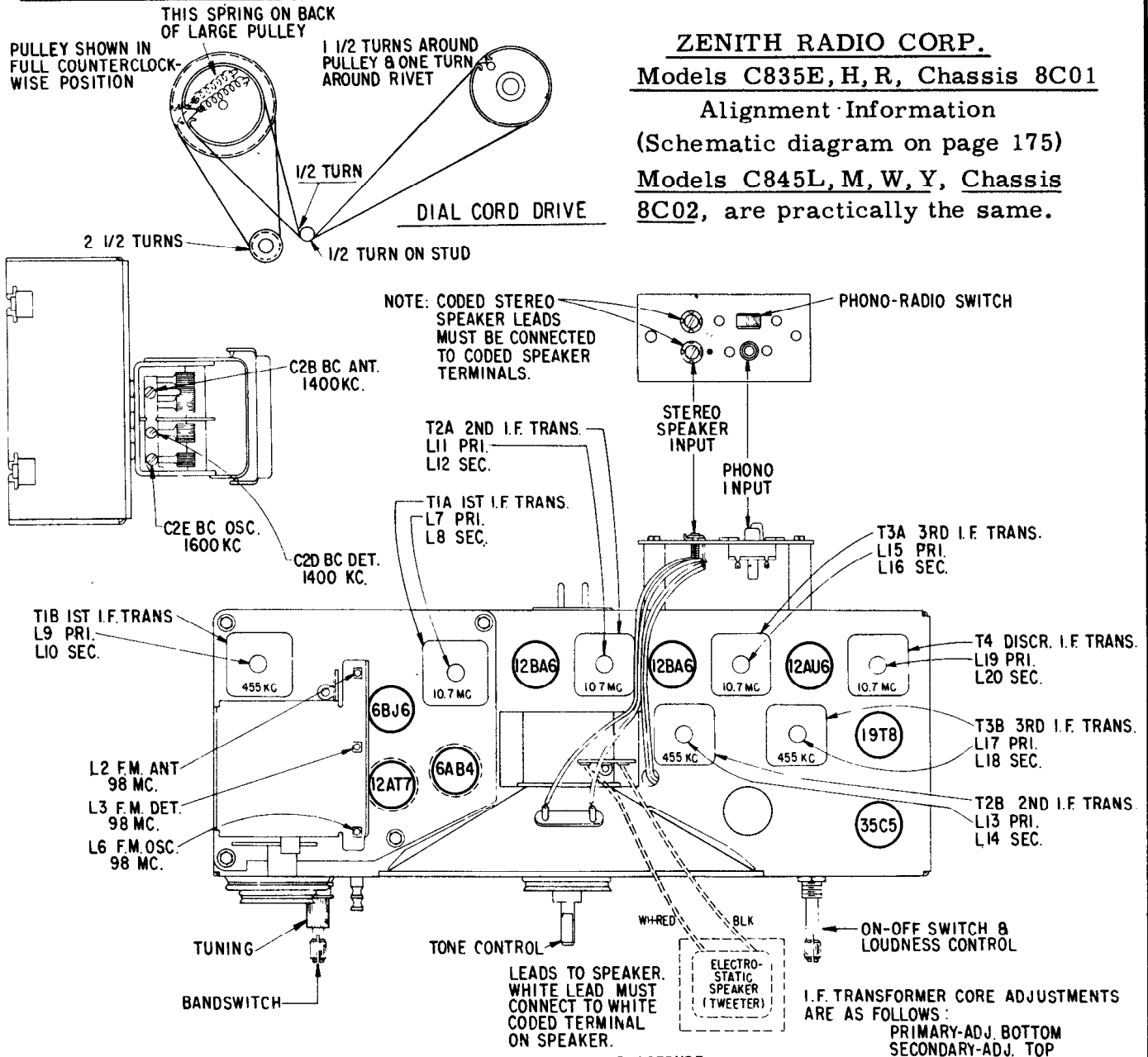
ZENITH RADIO CORP.

Models C835E, H, R, Chassis 8C01

Alignment Information

(Schematic diagram on page 175)

Models C845L, M, W, Y, Chassis 8C02, are practically the same.



ALIGNMENT PROCEDURE

OPERATION	CONNECT OSCILLATOR TO	DUMMY ANTENNA	INPUT SIGNAL FREQUENCY	BAND	SET DIAL TO	ADJUST TRIMMERS	PURPOSE
1	Pin 7 12A7 converter	.05 Mfd.	455 Kc., 400 Cycle Modulated	BC	600 Kc.	L18,17,14,13, 10,9	Align IF channel for maximum output.
2	2 turns loosely coupled to wavemagnet		1600 Kc., 400 Cycle Modulated	BC	1600 Kc.	C2E	Set oscillator to dial scale.
3	2 turns loosely coupled to wavemagnet		1400 Kc., 400 Cycle Modulated	BC	1400 Kc.	C2D, C2B	Align detector and antenna stages.
4(a)	Pin 1 (grid) on 12AU6 limiter	.05 Mfd.	10.7 Mc. Unmodulated	FM		L19	Align primary of discriminator for maximum reading.
5(b)	Pin 1 (grid) on 12AU6 limiter	.05 Mfd.	10.7 Mc. Unmodulated	FM		L20	Adjust secondary of discriminator for zero reading.
6(c)	Pin 1 (grid) on 12BA6 2nd IF	.05 Mfd.	10.7 Mc. Unmodulated	FM		L16,15	Align 3rd IF transformer for maximum reading.
7(c)	Pin 1 (grid) on 12BA6 1st IF	.05 Mfd.	10.7 Mc. Unmodulated	FM		L12,11	Align 2nd IF transformer for maximum reading.
8(c)	Pin 7 (grid) on 12A7 converter tube socket	.05 Mfd.	10.7 Mc. Unmodulated	FM		L8,7	Align 1st IF transformer for maximum reading.
9(c)		270 Ohms	98 Mc. Unmodulated	FM	98 Mc.	L6	Set oscillator to dial scale.
10(c) (d)	Antenna Post FM (Remove line ant.)	270 Ohms	98 Mc. Unmodulated	FM	98 Mc.	L3,2	Align detector and antenna stages for maximum reading.