

DIAL-CORD INSTALLATION

When replacement of the dial cord in a control unit is necessary, refer to the illustration (figure 1, 2, 3, or 4) which most nearly resembles the control unit, and install the dial cord as shown. Figures 1 through 4 show typical control units. Pass the dial cord under the center tab of the pointer, and wrap 1 turn around each outside tab, and $3\frac{1}{2}$ turns around the tuning shaft. The length of the dial cord (figure 5) for each control unit is given in the following list

Car	Control-Unit Model No	Dial-Cord Length
Buick (Special)	C720A, M	$19\frac{5}{16}$
Buick (Super)	C620A, M	$18\frac{5}{8}$
Chevrolet	C622A, M	$19\frac{5}{16}$
Chrysler	C623A, M	$15\frac{7}{16}$
Ford	C627A, M	$21\frac{5}{16}$
Nash	C631A, M	19'
Oldsmobile	C632A, M	$18\frac{1}{8}$
Pontiac	C634A, M	$18\frac{3}{8}$
Studebaker	C635A, M	$20\frac{9}{16}$
Under Dash	C600A, M	$16\frac{1}{16}$

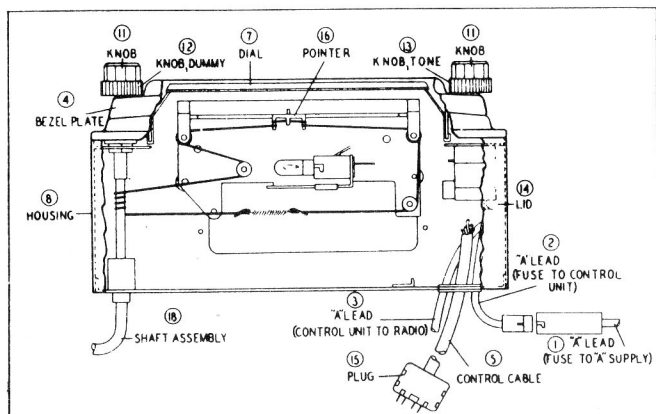


Figure 1. Control Unit C600M (Under Dash), Showing Location of Parts and Dial-Cord Installation Details

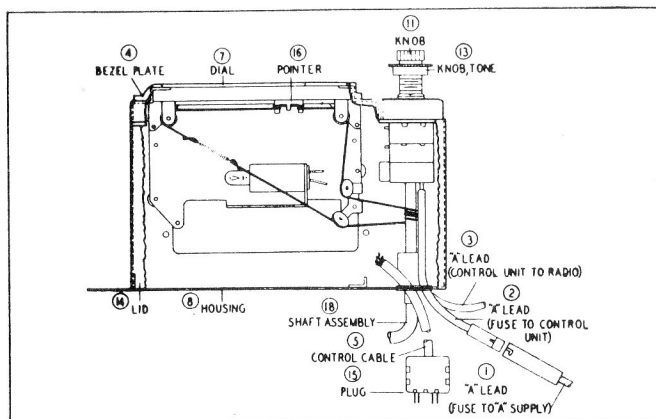


Figure 2 Control Unit C623M (Chrysler), Showing Location of Parts and Dial-Cord Installation Details

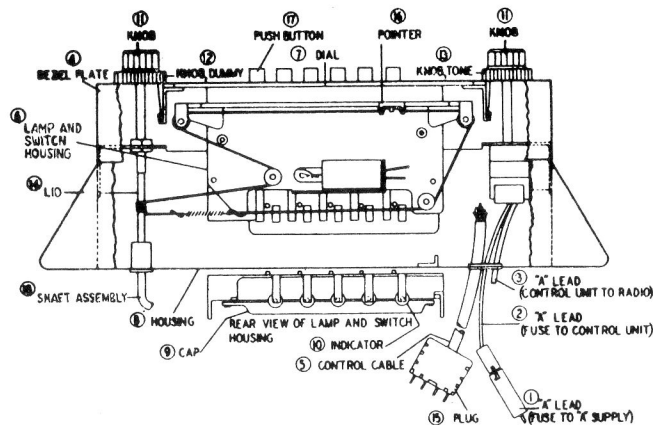


Figure 4 Control Unit C627A (Ford), Showing Location of Parts and Dial-Cord Installation Details

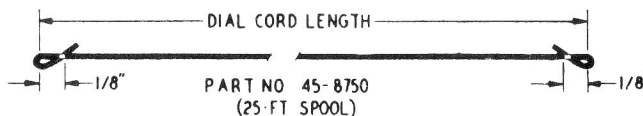


Figure 5 Dial-Cord Dimensional Drawing

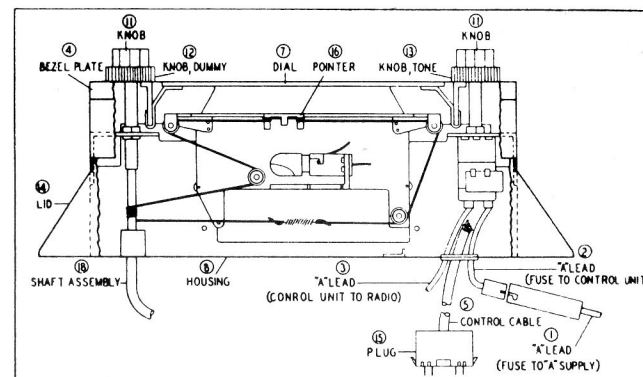


Figure 3 Control Unit C627M (Ford), Showing Location of Parts and Dial-Cord Installation Details

DIAL CORD INSTALLATION FOR C R MODELS

FOR CR MODELS SEE
SHEETS 178-186