

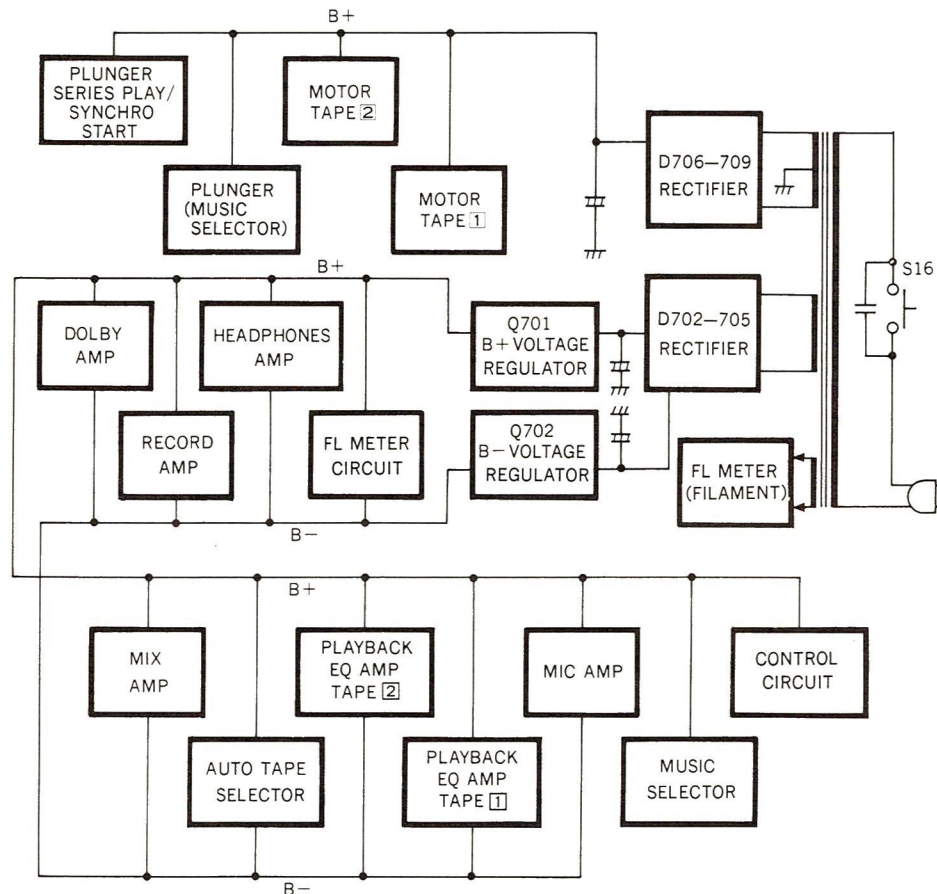
# Technical Information

Cassette Deck

RS-M222

- Please use this information together with the service manual for model No. RS-M222 (original).
- For block diagrams and trouble shooting, refer to the ones in this Technical Information.

## BLOCK DIAGRAMS POWER SUPPLY SYSTEM



### Notes:

- Description of ➡ mark

For functions, such as double speed dubbing, synchro start, series play and cue/review, the corresponding selection signal is sent from the control system to the required selection circuit.

Selection signals are indicated by a ➡ mark in block diagram.

- S1-1—S1-12 ..... Record/playback select switch
- S2-1—S2-4 ..... Dolby NR IN/OUT select switch
- S3-1—S3-6 ..... Dubbing/Mixing switch
- S4-1—S4-2 ..... Dubbing speed switch
- S5-1 ..... Record muting switch
- S6 ..... TAPE 2 (Record/Playback deck): playback switch
- S7 ..... TAPE 2 (Record/Playback deck): FF/Rewind switch

- S8 ..... TAPE 1 (Playback deck): playback switch
- S9 ..... TAPE 1 (Playback deck): FF/Rewind switch
- S10 ..... TAPE 1 (Playback deck): playback EQ select switch
- S11 ..... TAPE 1 (Playback deck): pause switch
- S12 ..... TAPE 2 (Record/Playback deck): auto tape select switch (For Metal tape).
- S13 ..... TAPE 2 (Record/Playback deck): auto tape select switch (For CrO<sub>2</sub> tape).
- S14 ..... TAPE 1 (Playback deck) Motor switch.
- S15 ..... TAPE 2 (Record/Playback deck) Motor switch.
- S16 ..... Power ON/OFF switch

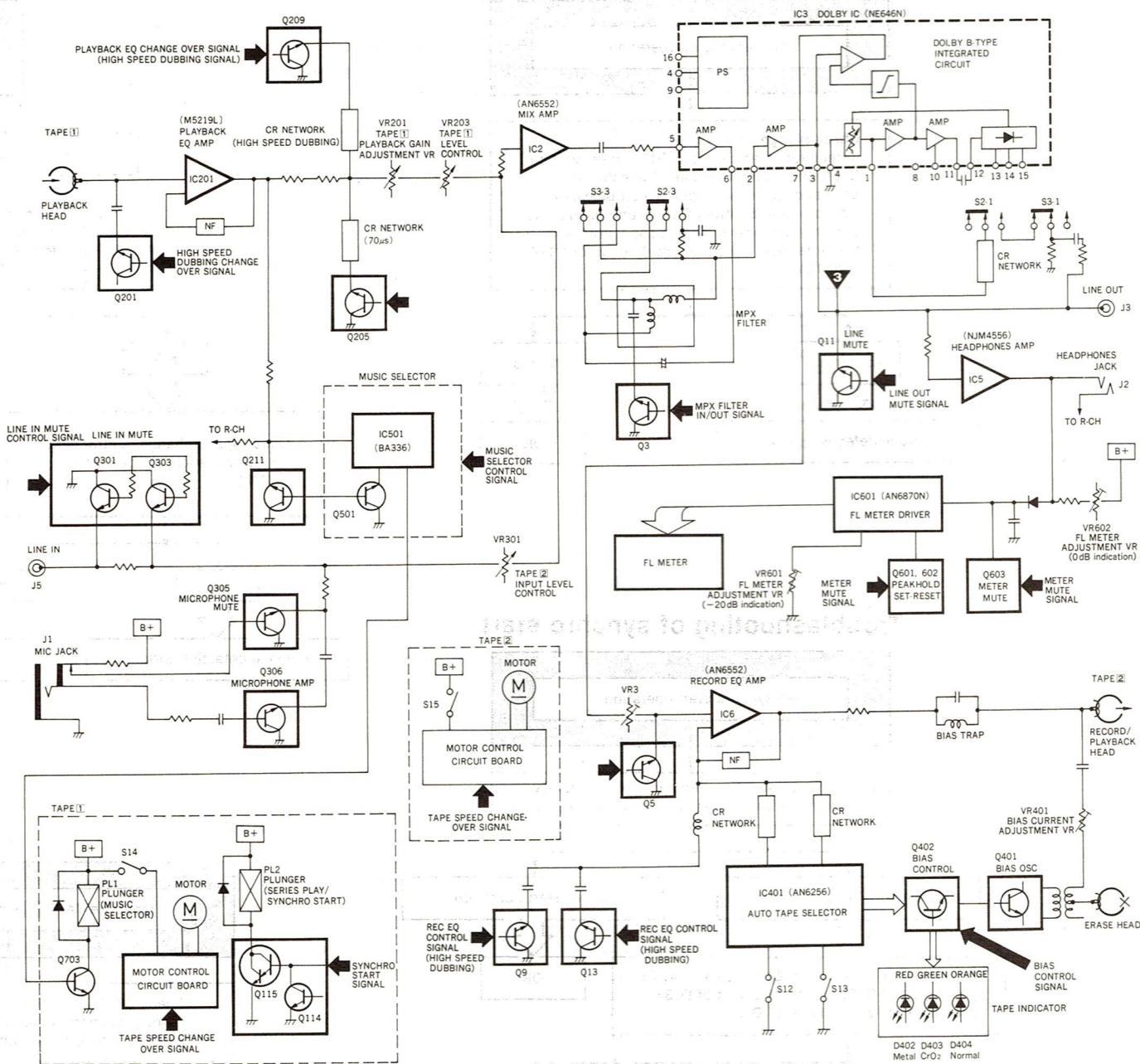
# Technics

Matsushita Electric Trading Co., Ltd.  
P.O. Box 288, Central Osaka Japan

Panasonic Tokyo  
Matsushita Electric Industrial Co., Ltd.  
1-2, 1-chome, Shibakoen, Minato-ku, Tokyo 105 Japan

## RECORDING SYSTEM (L-CH ONLY)

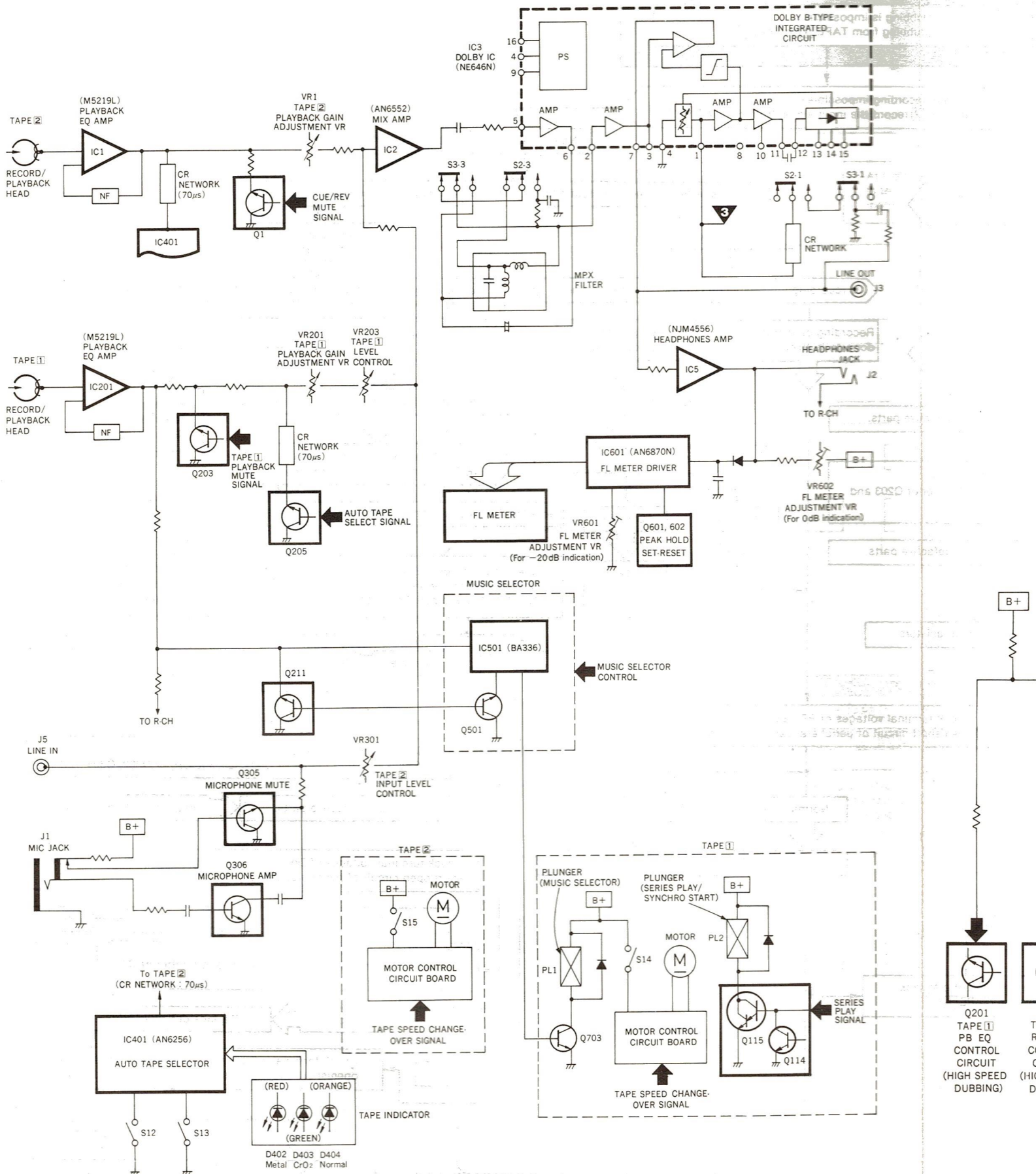
PLAYBACK



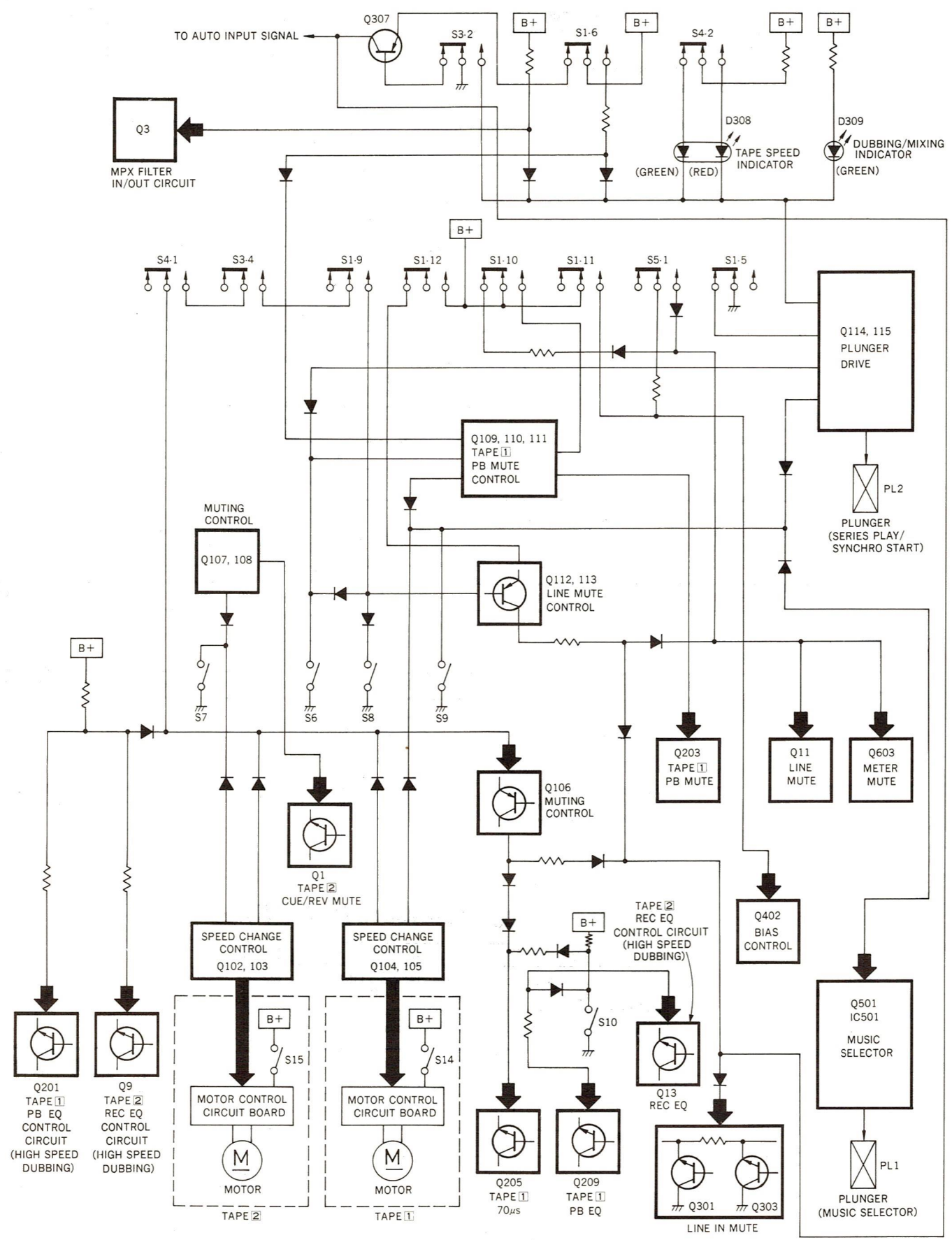


# PLAYBACK SYSTEM (L-CH ONLY)

CONTROL



CONTROL SYSTEM (L-CH ONLY)



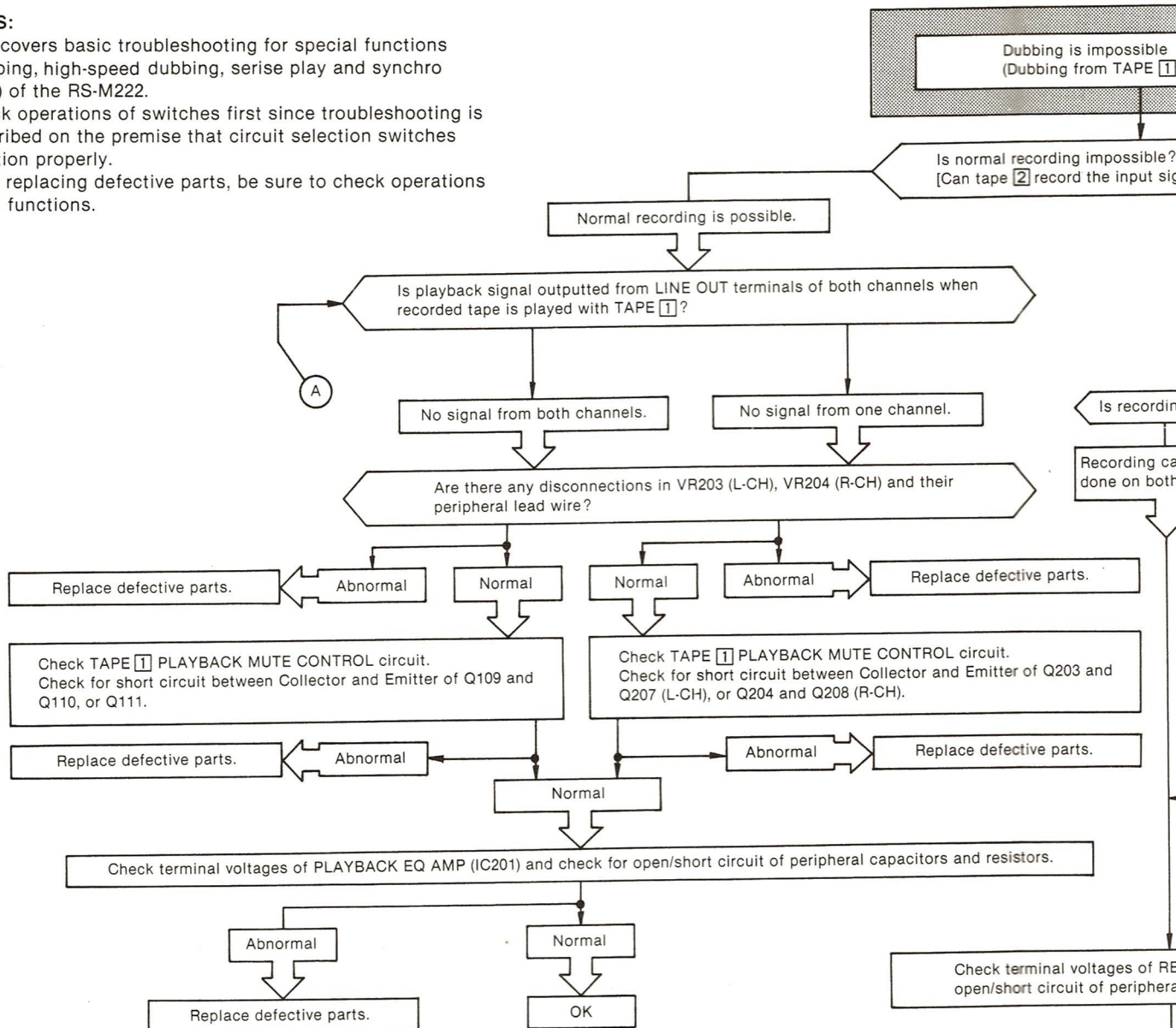


# TROUBLE SHOOTING

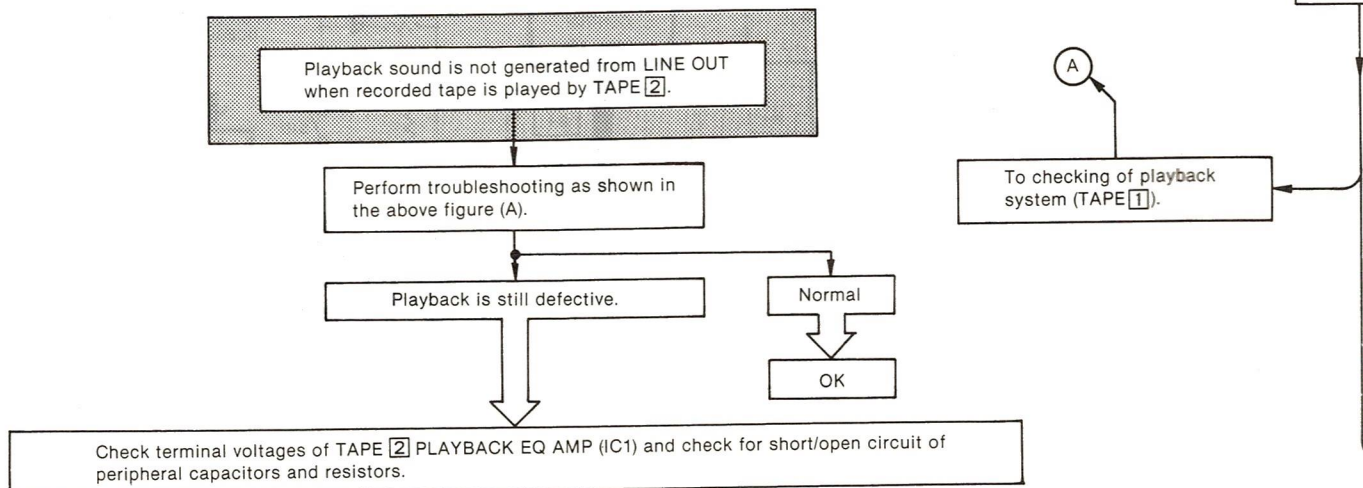
## NOTES:

- This covers basic troubleshooting for special functions (dubbing, high-speed dubbing, serise play and synchro start) of the RS-M222.
- Check operations of switches first since troubleshooting is described on the premise that circuit selection switches function properly.
- After replacing defective parts, be sure to check operations of all functions.

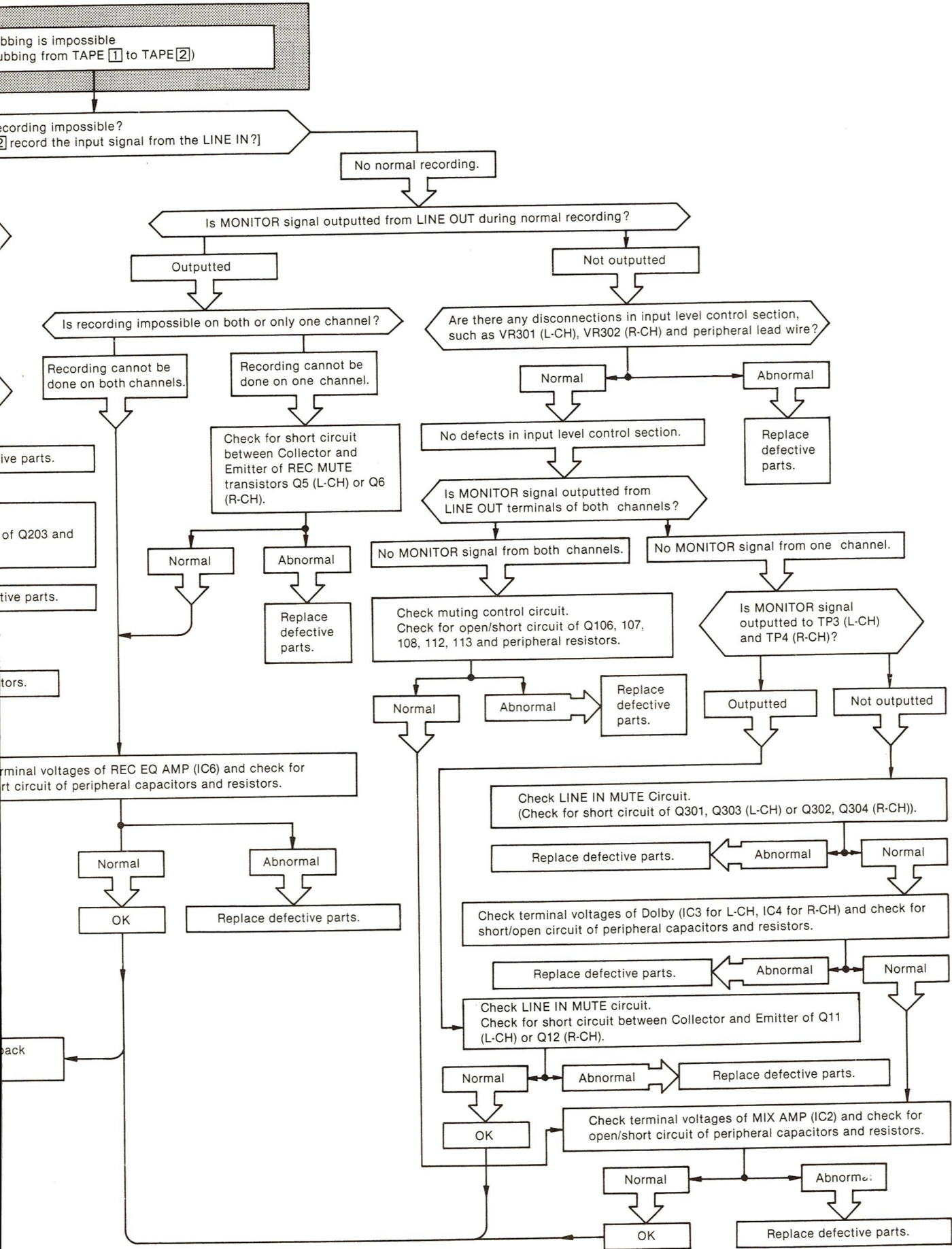
## Troubleshooting of dubbing



## Troubleshooting of playback (TAPE 2)

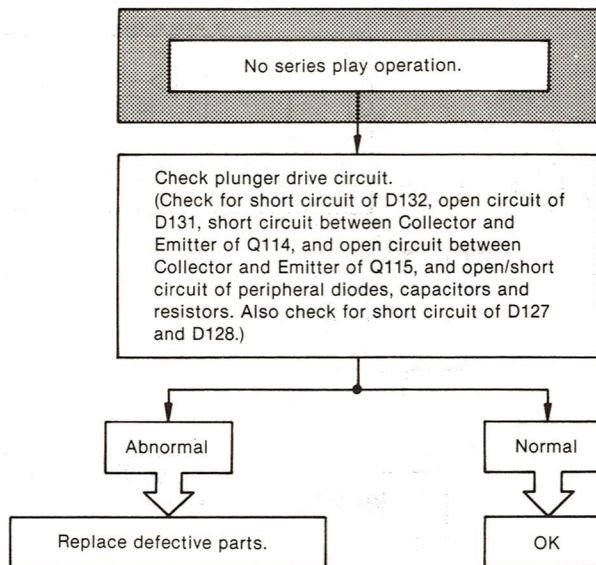


of dubbing (tape speed: Normal)

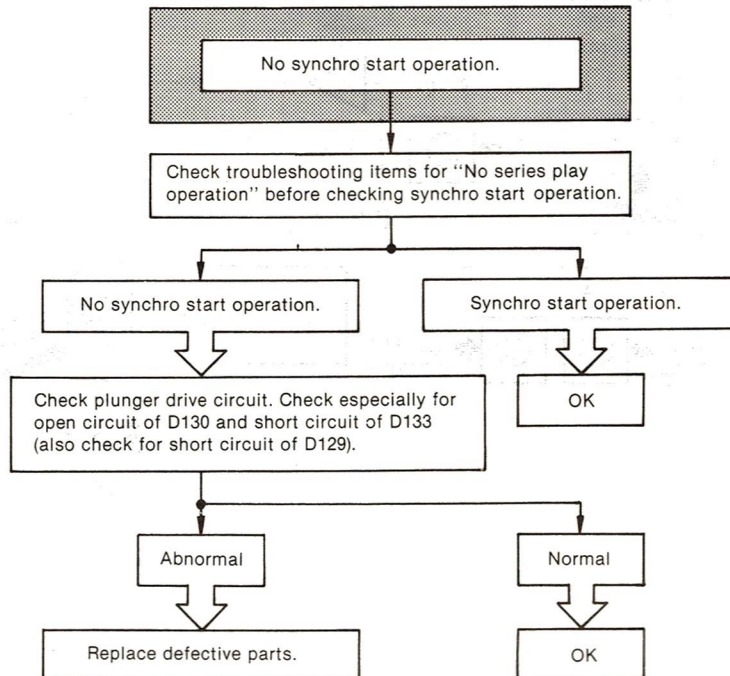




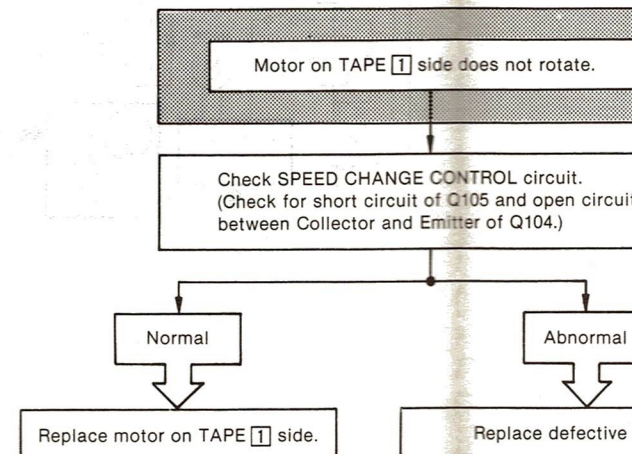
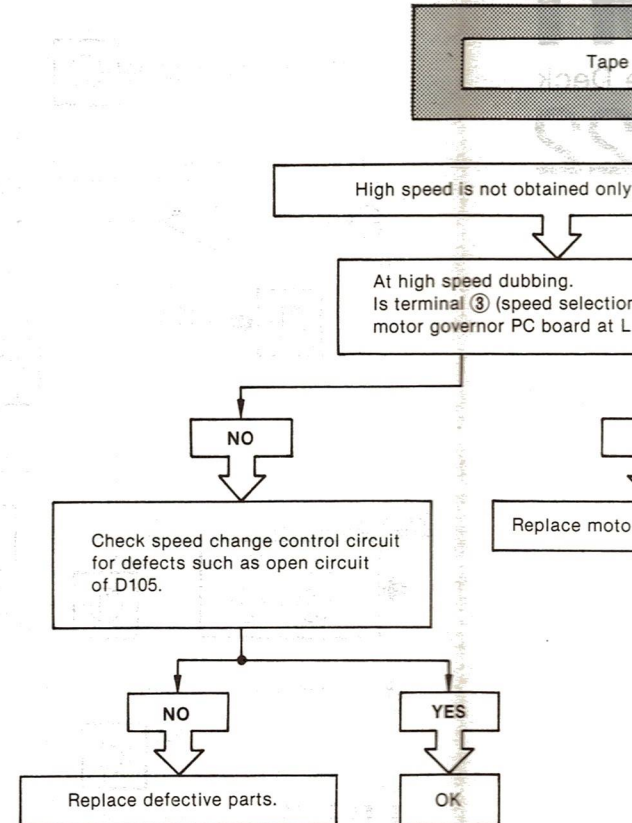
## Troubleshooting of series play



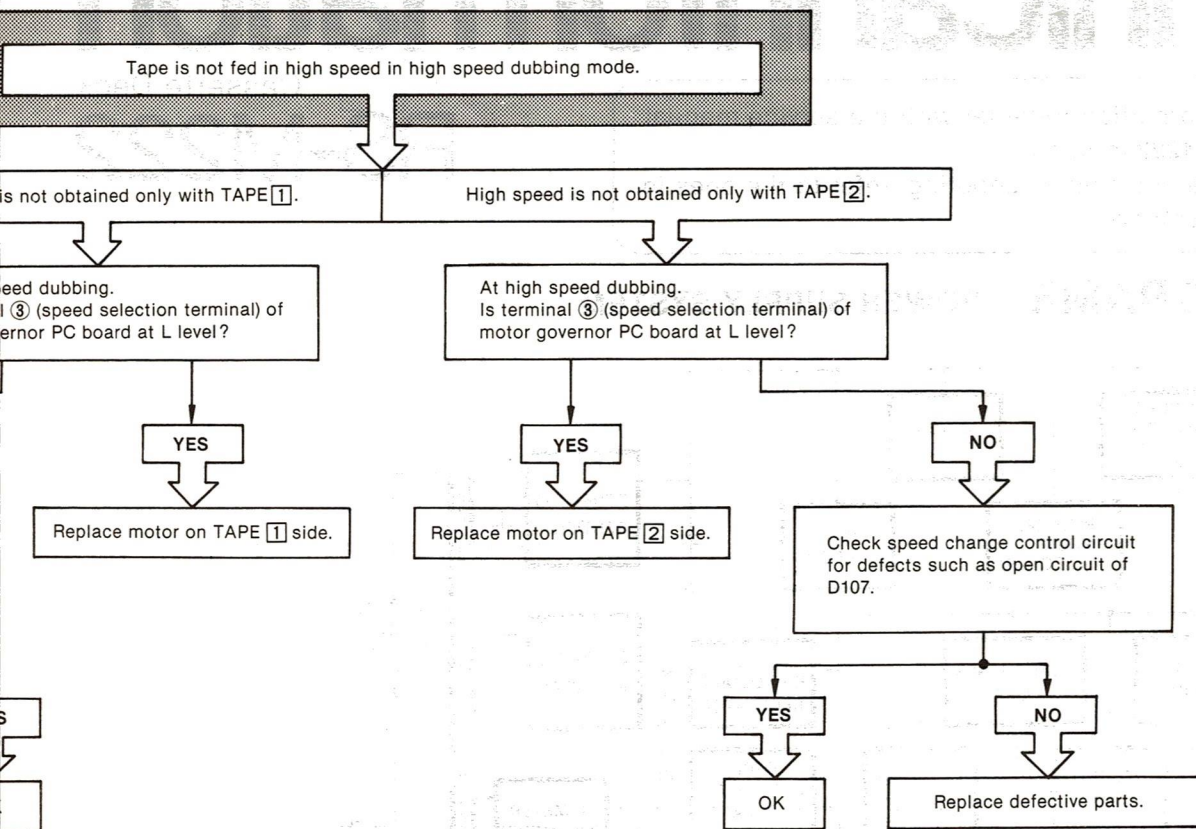
## Troubleshooting of synchro start



## Troubleshooting of tape



## Troubleshooting of high speed dubbing



## Troubleshooting of motor

