

**Buyers' Guide to 1930 Portable Sets.**—  
sions 17 × 13 × 7in. Weight 28 lb. Price,  
including turntable, £16 16s.

There is provision for connecting an  
external loud speaker. Total H.T. con-  
sumption 9 mA. at 90 volts.

#### Screened-Grid Four, Suitcase.

One S.G. H.F. tuned stage. Leaky-  
grid detector followed by two transformer-



**Pandona Suitcase Portable.**

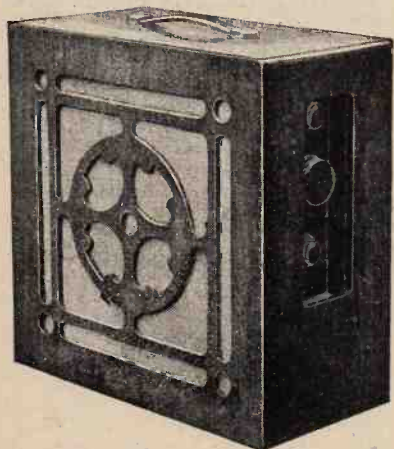
coupled L.F. stages. Two-dial tuning and  
a capacity control of reaction. Loud  
speaker fed direct from last valve.  
Dimensions 17 × 16½ × 10in. Weight 32 lb.  
Price, with turntable, £18 7s. 6d.

The total H.T. consumption is 10 mA.  
at 90 volts, and the L.T. battery has a  
capacity of 40 amp. hours.

#### Super Five.

Two aperiodic H.F. stages, followed  
by leaky-grid detection. Two trans-  
former-coupled L.F. stages. One-dial  
tuning and a capacity control of reaction.  
Provision for connection of external loud  
speaker. Dimensions 17 × 16½ × 10in.  
Weight 32 lb. Price, with turntable,  
£18 7s. 6d.

A pilot lamp is provided which indi-  
cates when the set is switched on. There



**Pegasus Five-valve Portable.**

is a four-volt L.T. battery having a capa-  
city of 20 amp. hours. Total H.T. con-  
sumption 10 mA. at 126 volts.

*Pandona, Ltd., 184, Aston Road, Bir-  
mingham.*

o o o o

#### PEGASUS.

##### Pegasus "Star."

Five valves; two aperiodically coupled  
H.F. stages, followed by leaky grid de-  
tector; two transformer L.F. stages.  
Loud speaker coupled direct to last  
valve. Dimensions 16 × 16 × 8in. Weight  
28 lb. Price £15 15s.

The total anode current is 7 mA. at  
99 volts. The capacity of the L.T. accu-  
mulator is 30 amp. hours.

##### Pegasus "Scout."

Five valves; same circuit as Pegasus  
"Star." De luxe model, £17 17s.

*Pegasus, Ltd., Victoria Street, Chapel  
Allerton, Leeds.*

o o o o

#### PHILIPS.

##### Model No. 2522.

Four valves; S.G. high-frequency valve,  
coupled by tuned anode to a grid detec-  
tor, which is followed by two transformer-  
coupled L.F. magnifiers. Single-tuning  
control with reaction. Dimensions 17½ ×  
15 × 9in. Weight 47 lb. Price £27 10s.



**Philips No. 2,522.**

On upright transportable receiver, with  
ganged tuning control operated by a  
single thumb dial. Provision is made for  
using an eliminator and for a gramophone  
pick-up. A turntable is fitted. A water-  
proof cover is also supplied with the set.

*Philips Lamps, Limited, Philips House,  
145, Charing Cross Road, London, W.C.2.*

o o o o

#### PORTADYNE.

##### Portadyne Screened Grid Four.

Single stage S.G. H.F. amplifier.  
Leaky-grid detector followed by two L.F.  
transformer stages. Volume control by  
resistance in screen-grid valve filament  
circuit. Two-dial tuning and a control  
of reaction. Dimensions 15 × 14 × 10½in.  
Weight 30 lb. Price £23 2s. Junior  
model, price £19 19s.

The total anode current is about 9 mA.  
at 99 volts. The L.T. battery has a capa-  
city of 26 amp. hours. There is provi-

sion for connecting an external loud  
speaker.

##### Portadyne Regional Five.

Two aperiodic H.F. amplifiers, fol-  
lowed by a leaky-grid detector. The two  
L.F. stages are resistance and trans-  
former-coupled in that order. One-dial  
tuning and a control of reaction. Dimen-  
sions 16 × 13 × 8½in. Weight 26 lb. Price  
£17 17s.



**Portadyne Regional Five.**

The total anode current is 6 mA. at 99  
volts, and the capacity of the L.T. bat-  
tery 25 amp. hours. The loud speaker  
is fed direct from the last valve.

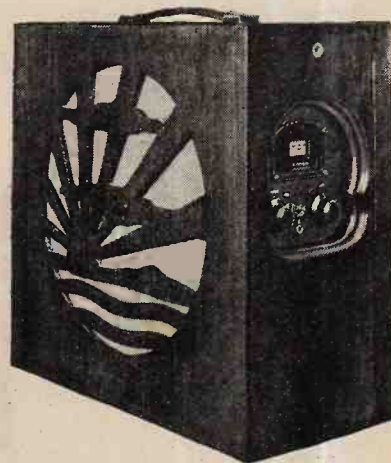
*Whittingham Smith and Co., Chase  
Estate, Park Royal, London, N.W.10.*

o o o o

#### PYE.

##### Model 25/C.

Five valves; two aperiodic H.F. ampli-  
fiers followed by leaky-grid detector;  
two transformer L.F. stages. One-dial  
tuning and a control of reaction. Pro-  
vision for connecting an external loud  
speaker. Dimensions 15½ × 7½ × 14½in.  
Weight 26½ lb. Price £19 19s.



**Pye Model 25/C.**

Total anode current is 8 mA. at 108  
volts. H.T. battery eliminator No. 924  
can be supplied for this receiver at extra  
cost.

*Pye Radio, Ltd., Paris House, Oxford  
Circus, London, W.1.*