

SIGNATURE *series*

1.0 Pre-Amplifier Service Manual

Signature 1.0 Specifications

Input Sensitivity/Impedance (at 1Vrms output, 1khz)

CD, AUX, Tuner, TV, Tape, Surround	: 150mV / 35kohm
MC	: 120uV / 56ohm
MM	: 2.2mV / 47kohm
Balanced	: 300mV
Frequency response (-3dB, line-stage)	: 0.2hz - 450khz
RIAA Equalization (20hz - 20khz)	: 0dB ± 0.2dB

Input overload level (1khz, THD 0.1%, 0dB gain)

CD, AUX, Tuner, TV, Tape	: 5V
Surround	: 3.75V
MM	: 150mV
MC	: 5mV
Balanced	: 10V

Maximum output voltage (1khz, THD 0.1%)

Balanced	: 10V / 600ohm (pin 2 pos)
Normal Left & Right Stereo	: 10V
Surround	: 3.75V

Signal to Noise ratio (A-Wtd, ref 1Vrms)

CD, AUX, Tuner, TV, Tape	: 100dB
Surround	: 95dB
MM	: 80dB
MC	: 75dB
Balanced	: 100dB

Channel Separation (10khz)

CD, AUX, Tuner, TV, Tape	: 80dB
Surround	: 80dB
MM	: 65dB
MC	: 65dB
Balanced	: 80dB

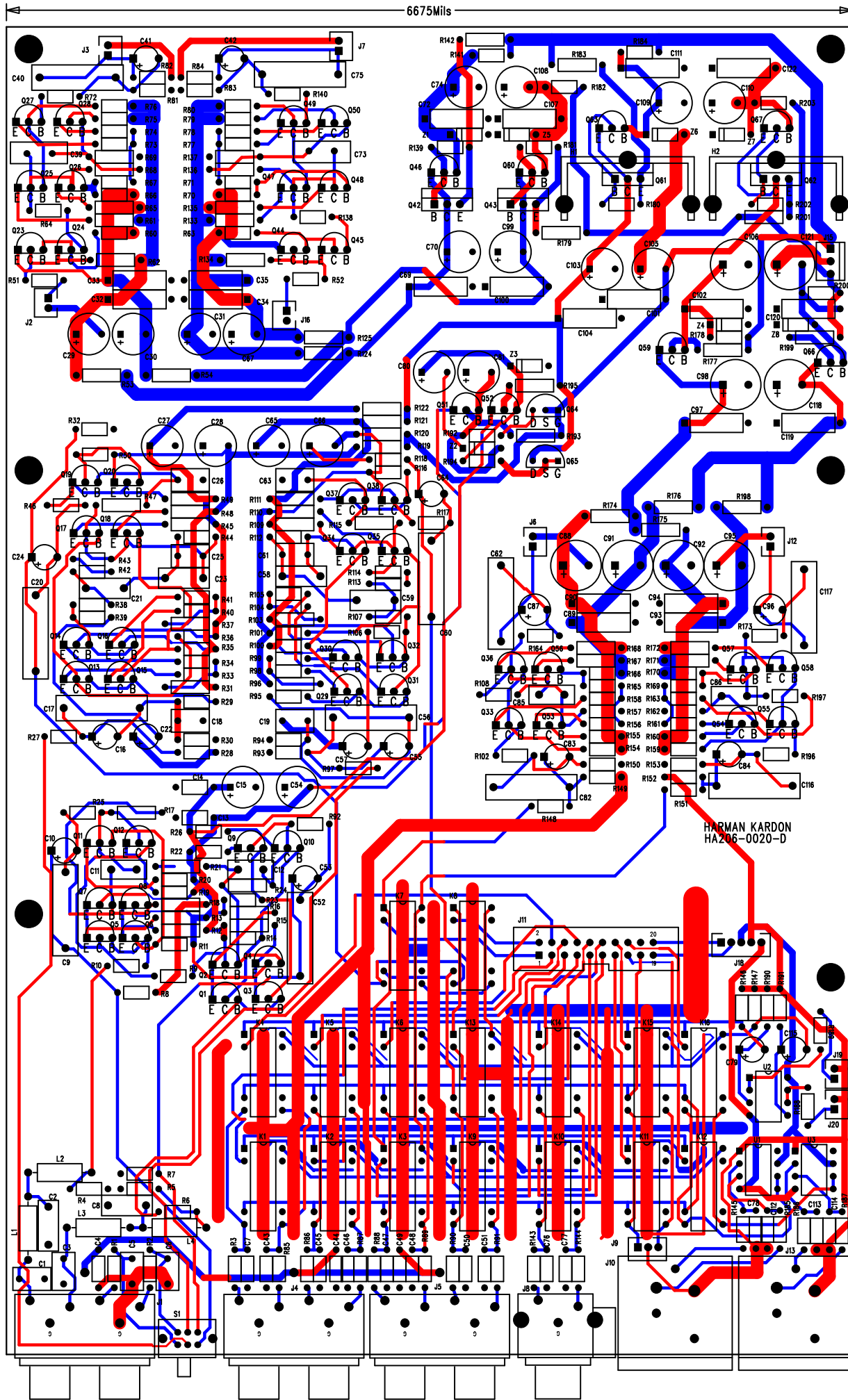
THD+N (20-20khz, 1Vrms, 80khz bw)

CD, AUX, Tuner, TV, Tape	: 0.004%
Surround	: 0.01%
MM	: 0.05%
MC	: 0.1%
Balanced	: 0.005%

General

Trigger Out	: 12V DC, tip positive, 150mA max.
Power Requirement	: AC 220-240V / 50hz
Power Consumption	: 1W Idle, 30W maximum
Dimensions (including knobs, jacks, buttons)	: 440 x 105 x 395 mm (W x H x D)

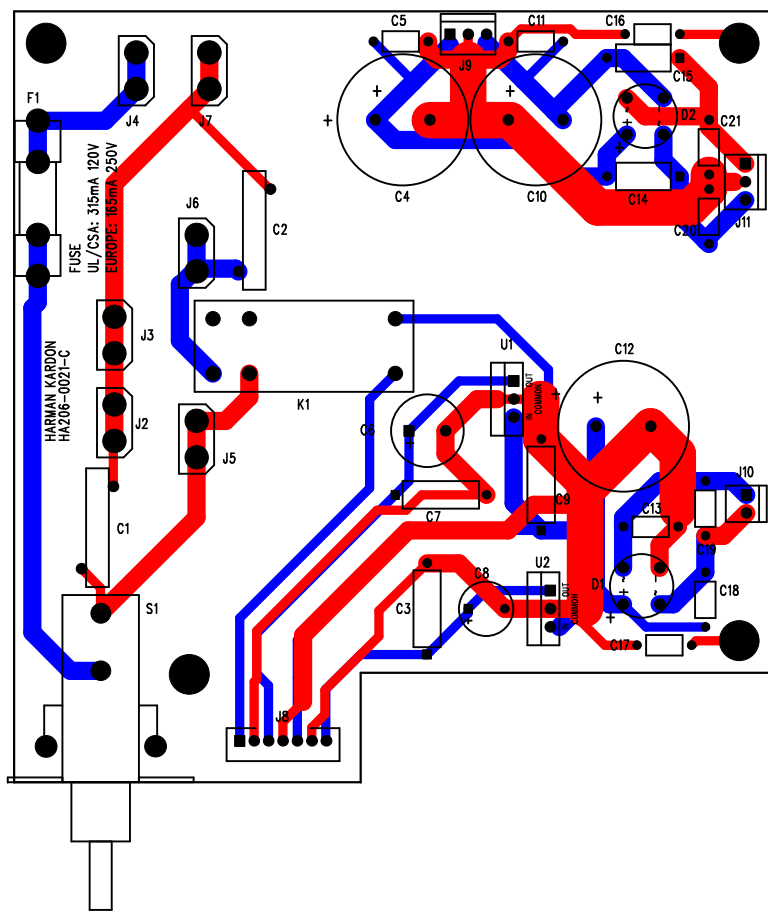
All features and specifications are subject to change without notice.



LAYER DESCRIPTION:
 TOP SIDE SOLDERSCREEN
 GERBER FILE NAME: ast0120.pho

APPROVALS	
INIT	DATE
DESIGNED: P.T.	11/3/98
DRAWN: JC	3/5/99
ELEC:	
MECH:	
Q/A:	
RELEASED:	

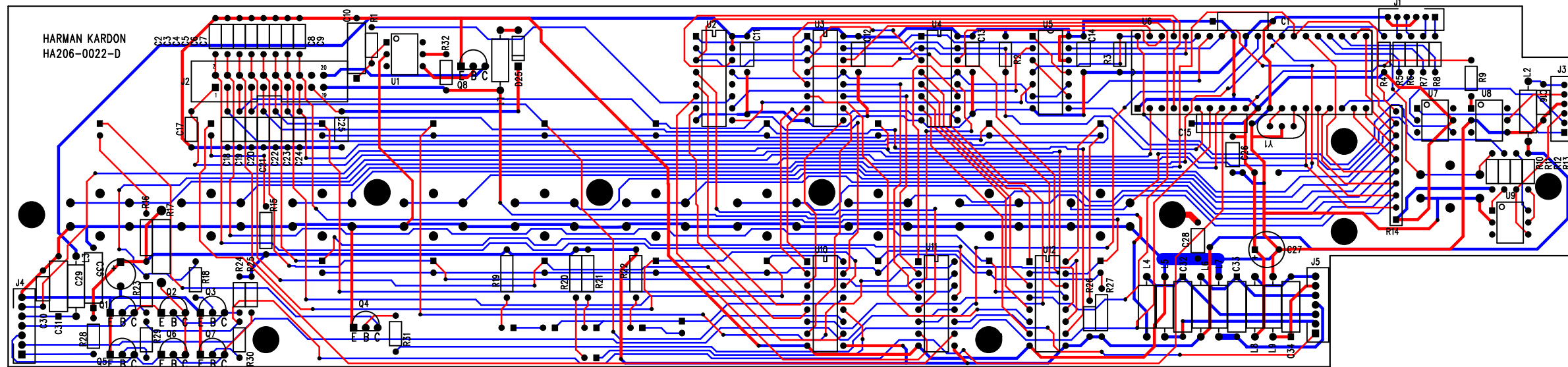
Gallen TECHNOLOGY		2240 PARAGON DRIVE SAN JOSE, CA 95131	
TITLE:	SIG 1.0		
SIZE	DRAWING NO:	REV.	
B	HA145-0020-D	D	
	PART NO:		
	HA5020D		
FILENAME:			
SCALE:			



LAYER DESCRIPTION:
 TOP SIDE SOLDERMASK
 GERBER FILE NAME: **ast0126.pho**

APPROVALS	
INIT	DATE
DESIGNED: P.T.	11/3/98
DRAWN: JC	5/24/99
ELEC:	
MECH:	
Q/A:	
RELEASED:	

Gallen TECHNOLOGY		2240 PARAGON DRIVE SAN JOSE, CA 95131	
TITLE:	SIG 1.0	SIZE:	B
DRAWING NO:	HA145-0021-C	REV.:	C
PART NO:	HA5021C	FILENAME:	
SCALE:			



HARMAN KARDON
HA206-0022-D

LAYER DESCRIPTION:

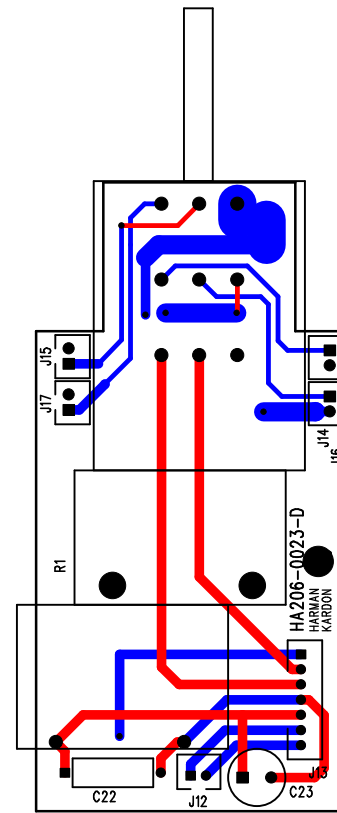
TOP SIDE SIKKOREEN

GERBER FILE NAME: ast0126i.pho

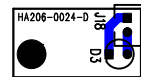
APPROVALS	
INIT	DATE
DESIGNED: P.T.	11/3/98
DRAWN: P.T.	7/8/99
ELEC:	
MECH:	
O/A:	
RELEASED:	

Gallen TECHNOLOGY 2240 PARAGON DRIVE
SAN JOSE, CA 95131

TITLE:	SIG 1.0
SIZE:	DRAWING NO: HA145-0022D
REV.:	D
FILENAME:	PART NO: HA5022D
SCALE:	



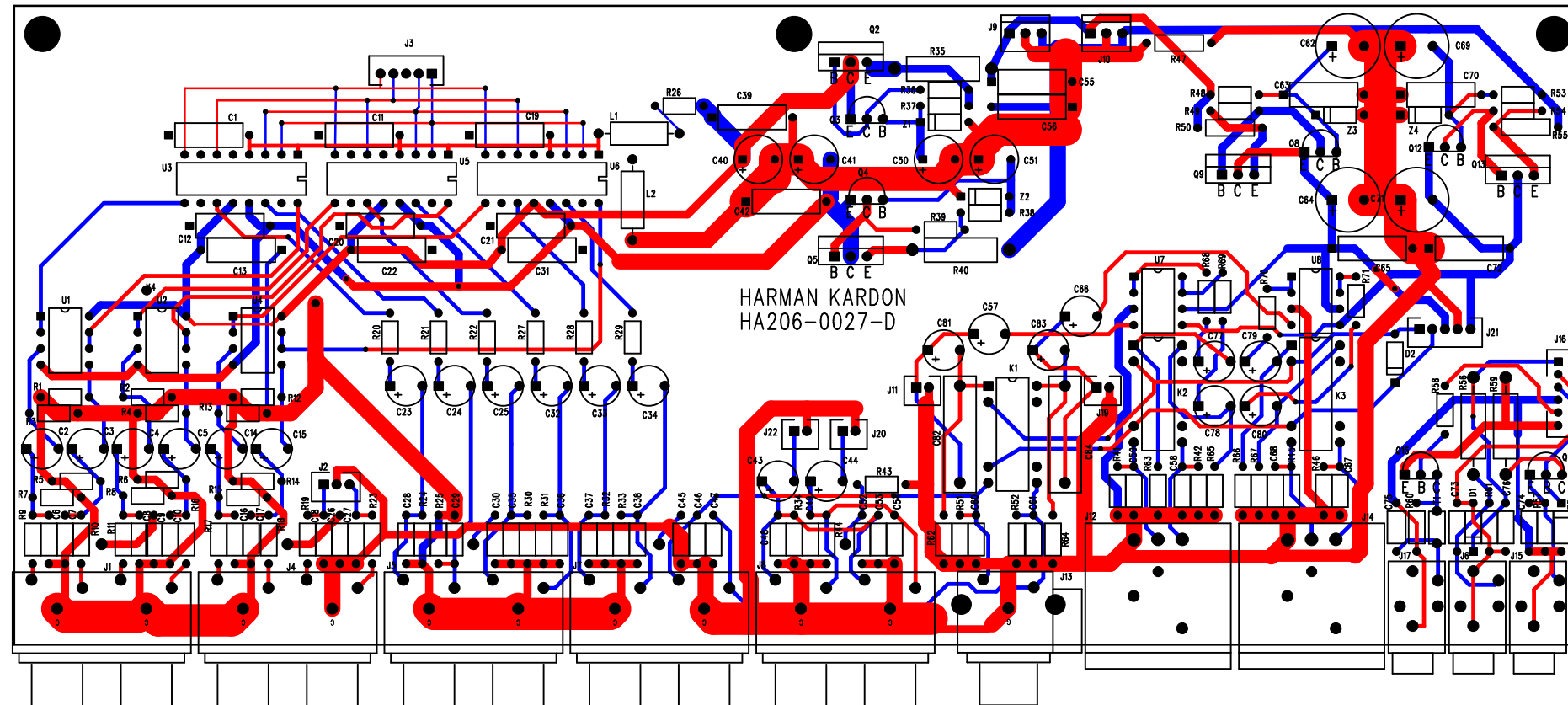
LAYER DESCRIPTION: TOP SIDE SCREEN GERBER FILE NAME: sst0230p100	APPROVALS		Gallen TECHNOLOGY 2240 PARAGON DRIVE SAN JOSE, CA 95131	
	INIT	DATE	TITLE:	SIG 1.0
	DESIGNED: P.T.	11/3/98	SIZE	DRAWING NO: HA145-0023-D
	DRAWN: PT	7/15/99	REV.	D
	ELEC:		FILENAME:	
MECH:		SCALE:		
Q/A:				
RELEASED:				



LAYER DESCRIPTION:
 TOP SIDE SOLDER
 GERBER FILE NAME: st0126.pho

APPROVALS		
INIT	P.T.	DATE
		11/3/98
	PT	7/15/99

Gallen TECHNOLOGY		2240 PARAGON DRIVE SAN JOSE, CA 95131	
TITLE: SIG 1.0			
SIZE	DRAWING NO: HA145-0024-D	REV. D	
B	PART NO: HA5024D		
FILENAME:			
SCALE:			



HARMAN KARDON
HA206-0027-D

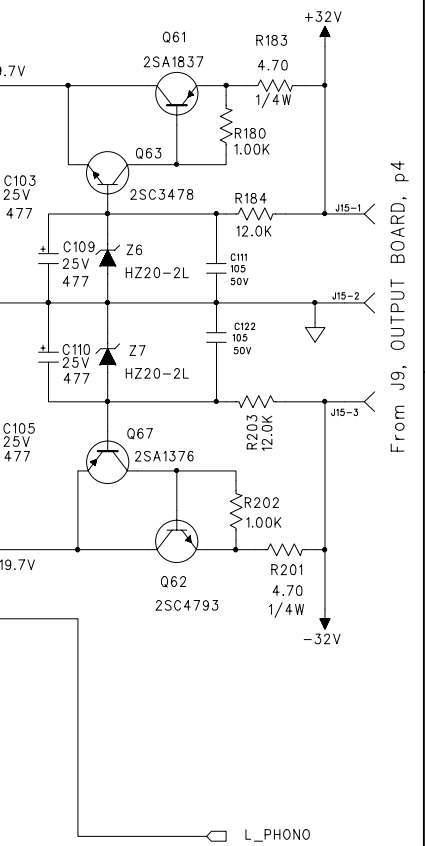
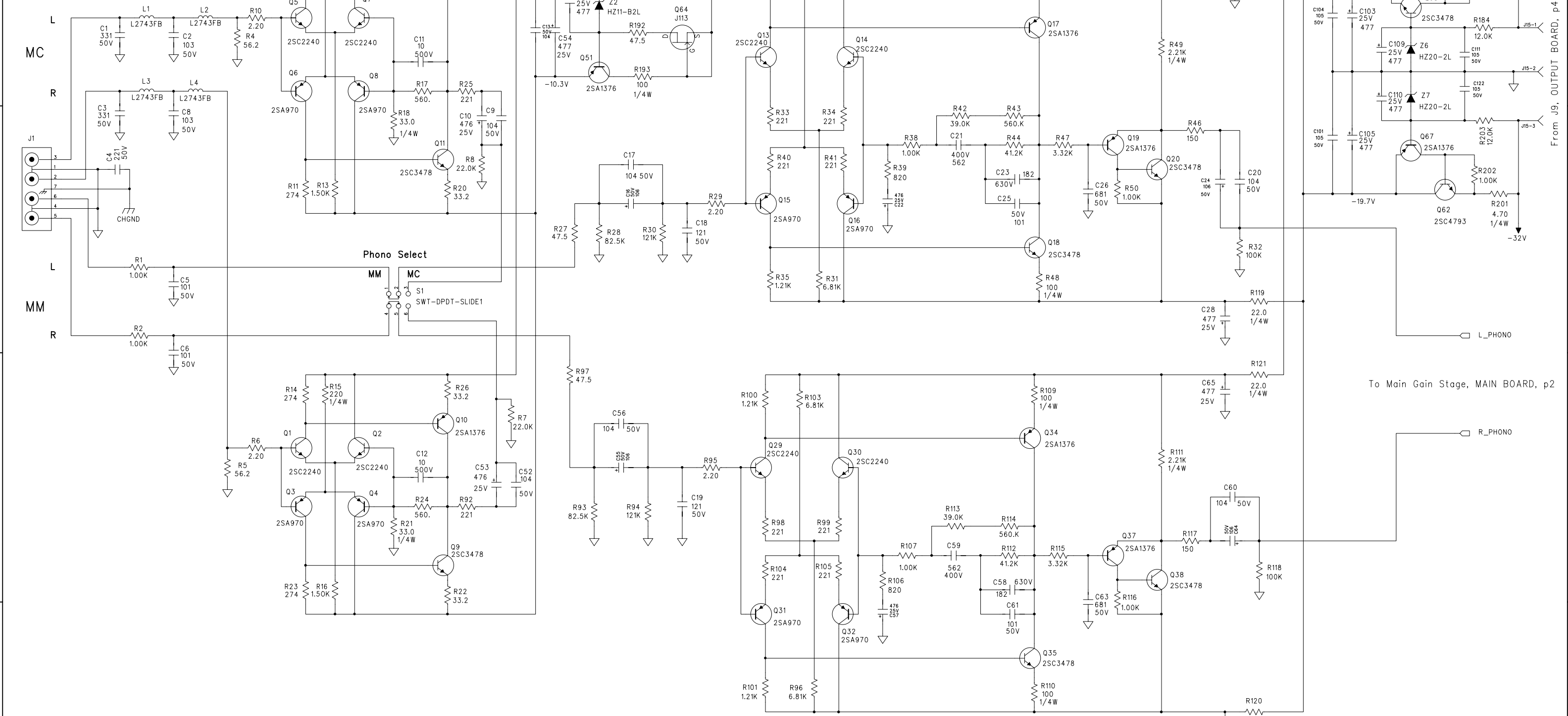
LAYER DESCRIPTION:
TOP SIDE SIGNALS
GERBER FILE NAME: ast0126.pho

APPROVALS	
INIT	DATE
DESIGNED: P.T.	11/3/98
DRAWN: PT	7/15/99
ELEC:	
MECH:	
Q/A:	
RELEASED:	

Gallen TECHNOLOGY		2240 PARAGON DRIVE SAN JOSE, CA 95131	
TITLE:	SIG 1.0	SIZE:	B
DRAWING NO:	HA145-0027-D	REV.:	D
PART NO:	HA5027D	FILENAME:	
		SCALE:	

REVISION RECORD			
LTR	ECO NO:	APPROVED	DATE:

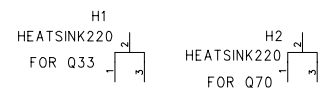
Phono Inputs



To Main Gain Stage, MAIN BOARD, p2

From J9, OUTPUT BOARD, p4

- MH.125/220 X2
- MH.125/220 X3
- MH.125/220 X4
- MH.125/220 X5
- MH.125/220 X6

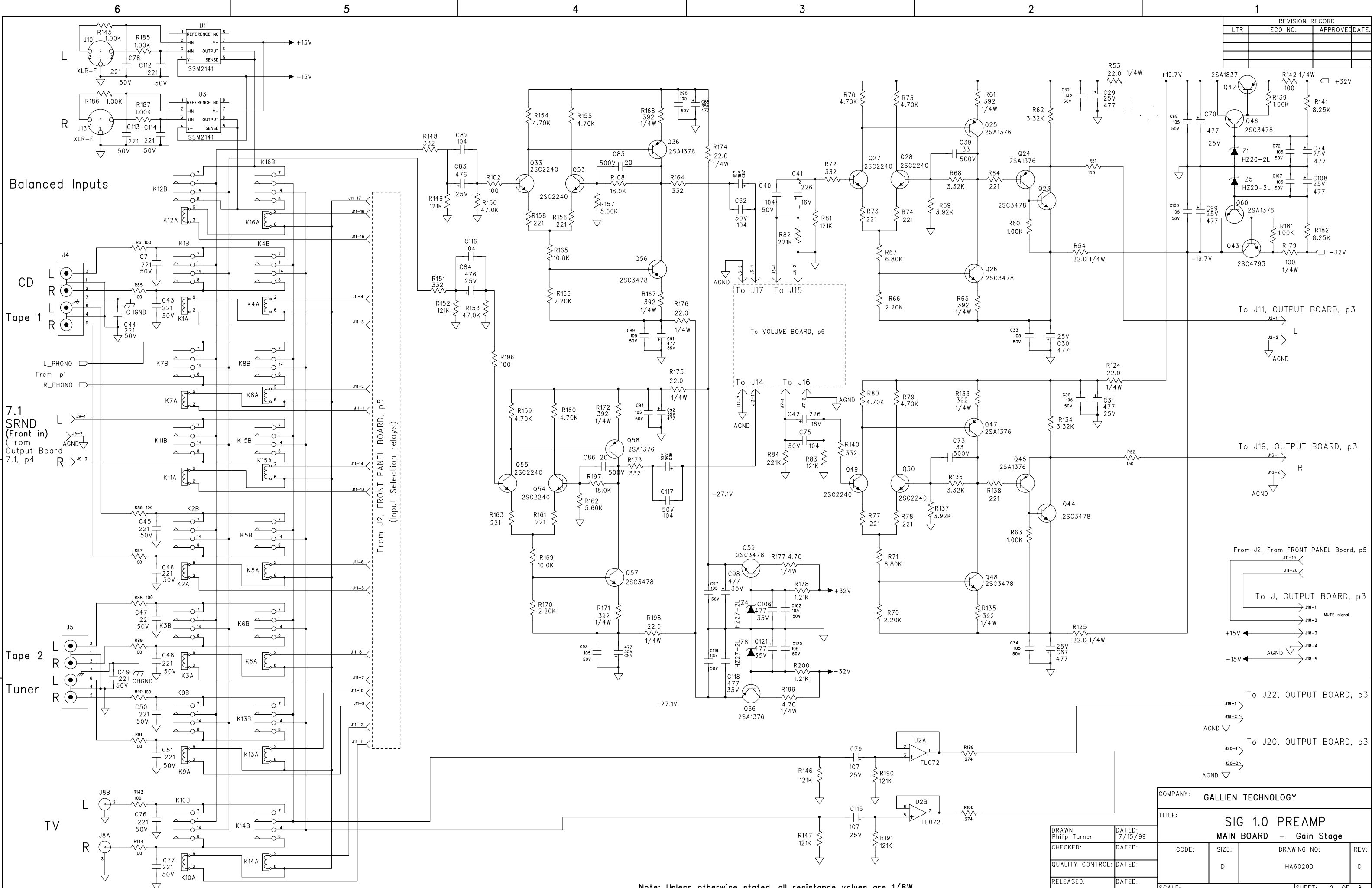


Note: Unless otherwise stated, all resistance values are 1/8W.

DRAWN: Philip Turner	DATED: 3/22/99
CHECKED:	DATED:
QUALITY CONTROL:	DATED:
RELEASED:	DATED:

COMPANY: GALLIEN TECHNOLOGY			
TITLE: SIG 1.0 PREAMP BOARD MAIN BOARD - Phono Stage			
CODE:	SIZE: D	DRAWING NO: HA6020D	REV: D
SCALE:	SHEET: 1 OF 8		

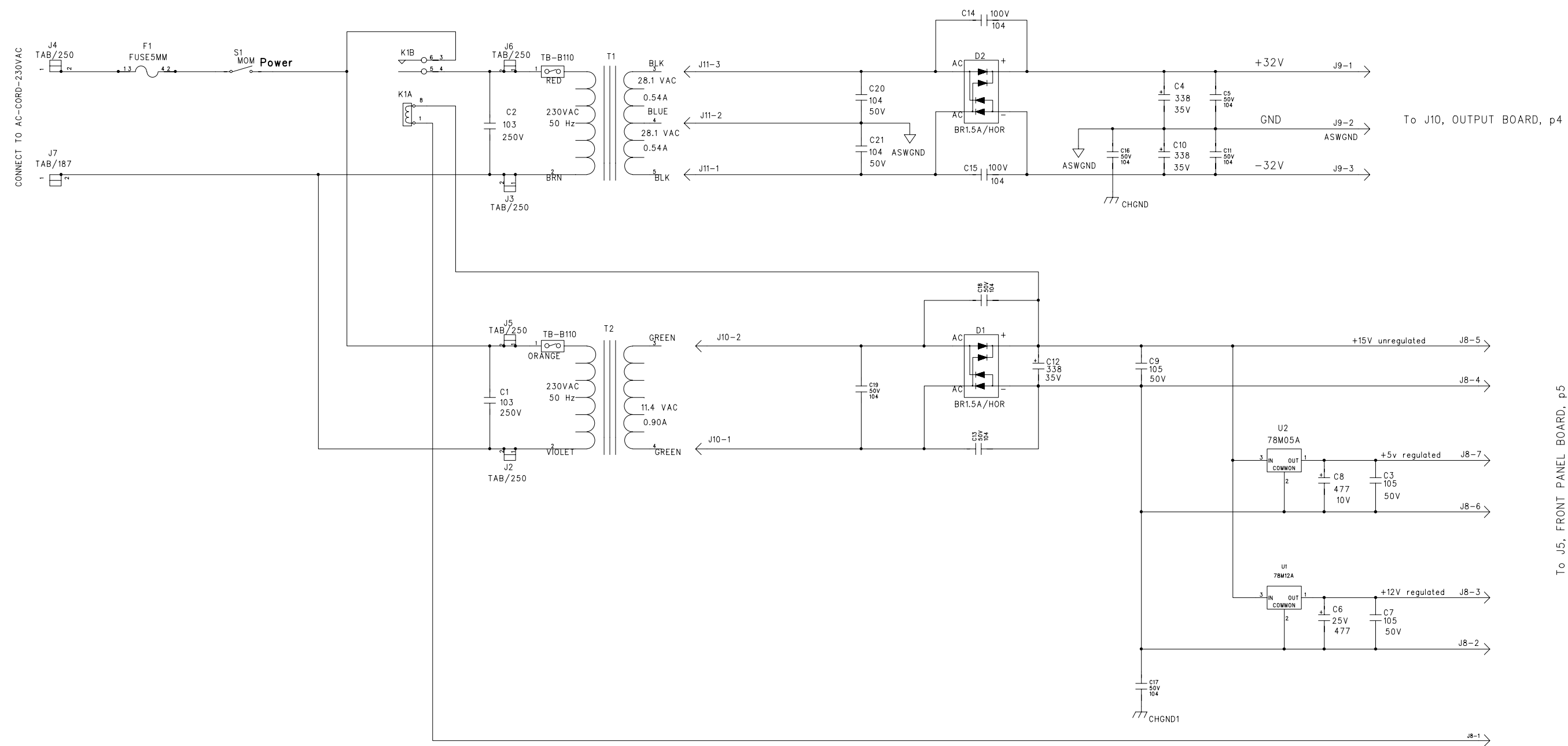
REVISION RECORD			
LTR	ECO NO:	APPROVED	DATE:



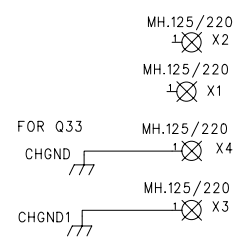
COMPANY: GALLIEN TECHNOLOGY	
TITLE: SIG 1.0 PREAMP MAIN BOARD - Gain Stage	
DRAWN: Philip Turner	DATED: 7/15/99
CHECKED:	DATED:
QUALITY CONTROL:	DATED:
RELEASED:	DATED:
CODE:	SIZE: D
DRAWING NO: HA6020D	REV: D
SCALE:	SHEET: 2 OF 8

Note: Unless otherwise stated, all resistance values are 1/8W.

REVISION RECORD			
LTR	ECO NO:	APPROVED	DATE:



PC Board Attributes



To J5, FRONT PANEL BOARD, p5

COMPANY: GALLIEN TECHNOLOGY			
TITLE: SIG 1.0 PREAMP SWITCH BOARD - Power Supplies			
DRAWN: Philip Turner	DATED: 5/19/99	CODE:	REV: C
CHECKED:	DATED:	SIZE: D	DRAWING NO: HA6021C
QUALITY CONTROL:	DATED:	SCALE:	SHEET: 8 OF 8
RELEASED:	DATED:		

Note: Unless otherwise stated, all resistance values are 1/8W.

6

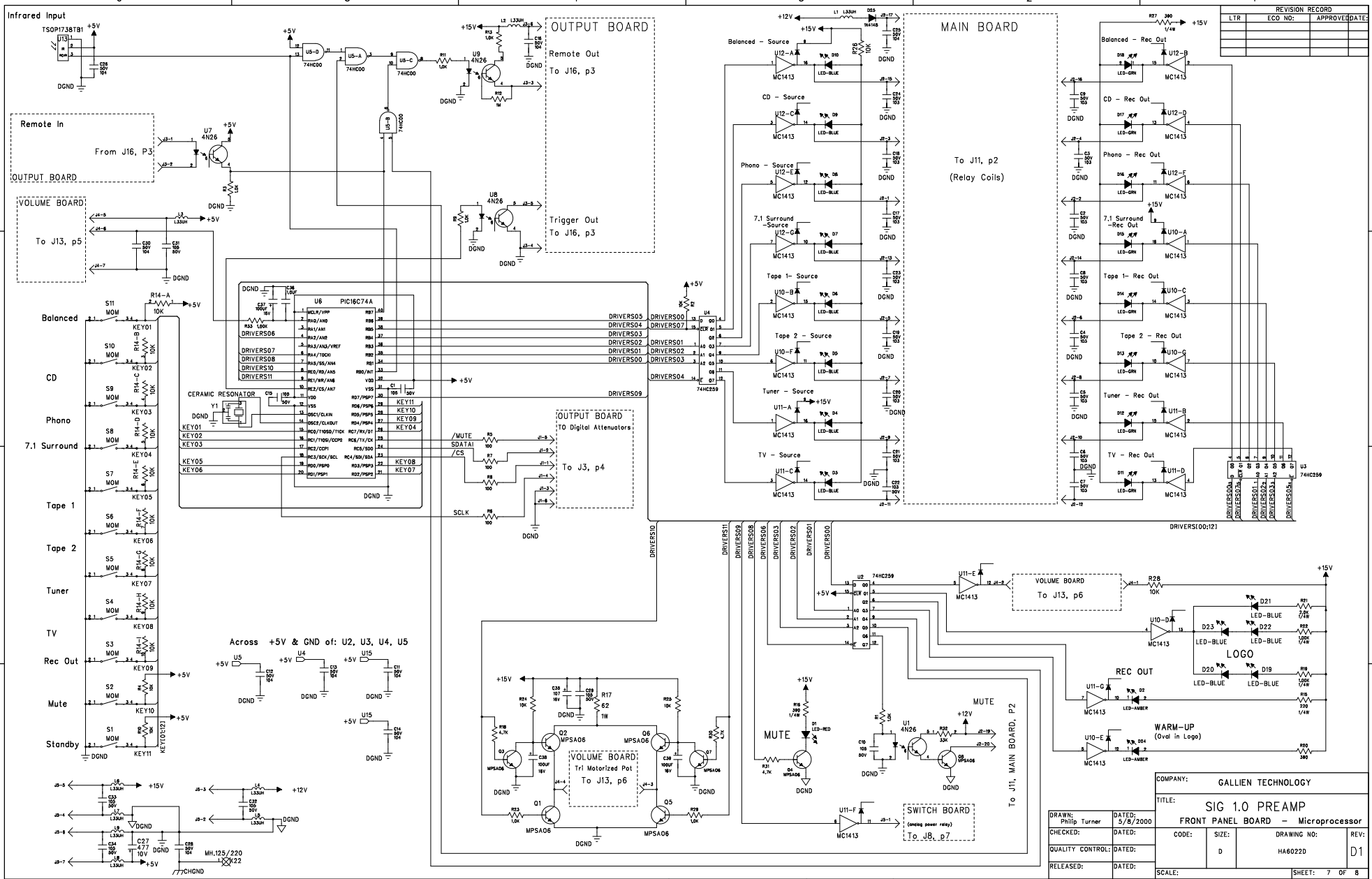
5

4

3

2

1



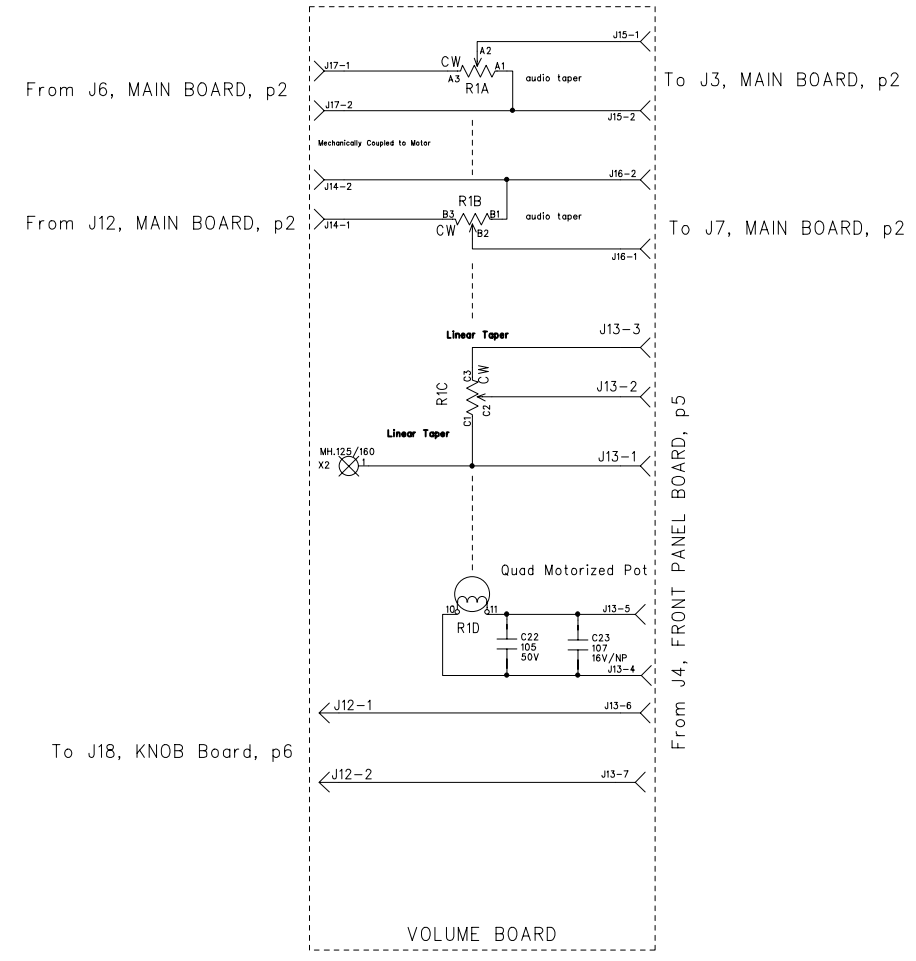
REVISION RECORD		
ECO NO:	APPROVED:	DATE:

Note: Unless otherwise stated, all resistance values are 1/8W.

MH.125/220 1X16 MH.125/220 1X24 MH.125/220 1X17 MH.125/220 1X18 MH.125/220 1X19 MH.125/220 1X25 MH.125/220 1X21 MH.125/220 1X23

DRAWN: Phillip Turner		DATED: 5/8/2000		COMPANY: GALLIEN TECHNOLOGY	
CHECKED:		DATED:		TITLE: SIG 1.0 PREAMP	
QUALITY CONTROL:		DATED:		FRONT PANEL BOARD - Microprocessor	
RELEASED:		DATED:		CODE: D	SIZE: HA6022D
		SCALE:		DRAWING NO: D1	
				REV: 7 OF 8	

REVISION RECORD			
LTR	ECO NO:	APPROVED	DATE:



Note: Unless otherwise stated, all resistance values are 1/8W.

DRAWN: Philip Turner		DATED: 7/15/99		COMPANY: GALLIEN TECHNOLOGY			
CHECKED:		DATED:		TITLE: SIG 1.0 PREAMP VOLUME BOARD			
QUALITY CONTROL:		DATED:		CODE:	SIZE: D	DRAWING NO: HA6023D	REV: D
RELEASED:		DATED:		SCALE:			
						SHEET: 5 OF 8	

6

5

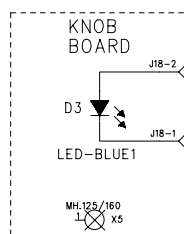
4

3

2

1

REVISION RECORD			
LTR	ECO NO:	APPROVED	DATE:



From J12, VOLUME BOARD, p5

COMPANY: GALLIEN TECHNOLOGY

TITLE: SIG 1.0 PREAMP
KNOB BOARD

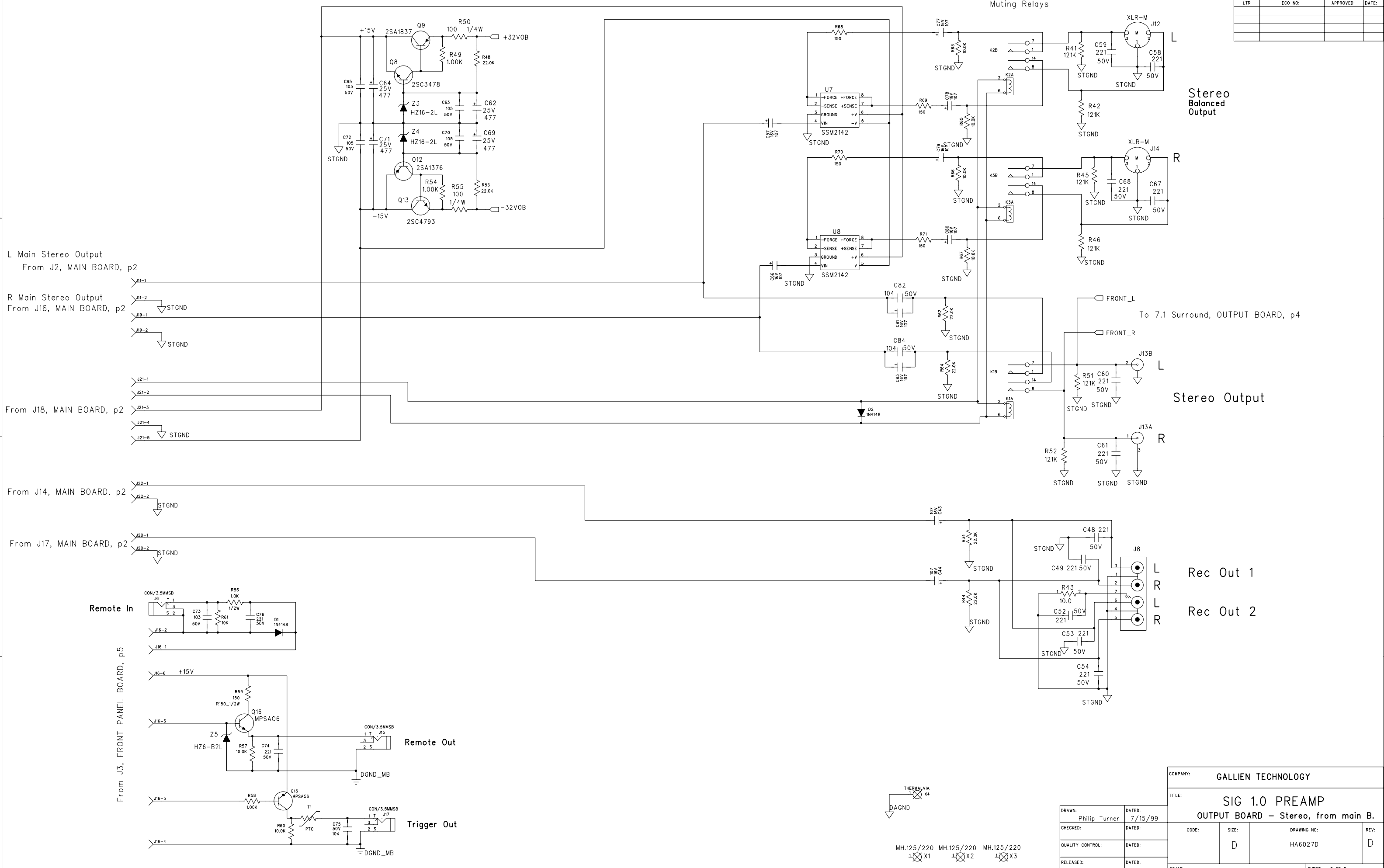
DRAWN: Philip Turner	DATED: 7/15/99
CHECKED:	DATED:
QUALITY CONTROL:	DATED:
RELEASED:	DATED:

CODE:	SIZE: D	DRAWING NO: HA6024D	REV: D
-------	------------	------------------------	-----------

SCALE: SHEET: 6 OF 8

Note: Unless otherwise stated, all resistance values are 1/8W.

REVISION RECORD			
LTR	ECO NO:	APPROVED:	DATE:



COMPANY: GALLIEN TECHNOLOGY			
TITLE: SIG 1.0 PREAMP OUTPUT BOARD - Stereo, from main B.			
CODE:	SIZE: D	DRAWING NO: HA6027D	REV: D
SCALE:	SHEET: 3 OF 8		

DRAWN: Philip Turner	DATED: 7/15/99
CHECKED:	DATED:
QUALITY CONTROL:	DATED:
RELEASED:	DATED:

MH.125/220 X1 MH.125/220 X2 MH.125/220 X3

THERMAL VIA X4
DAGND

A

A

B

B

C

C

D

D

REVISION RECORD			
LTR	ECO NO:	APPROVED	DATE:

D

D

C

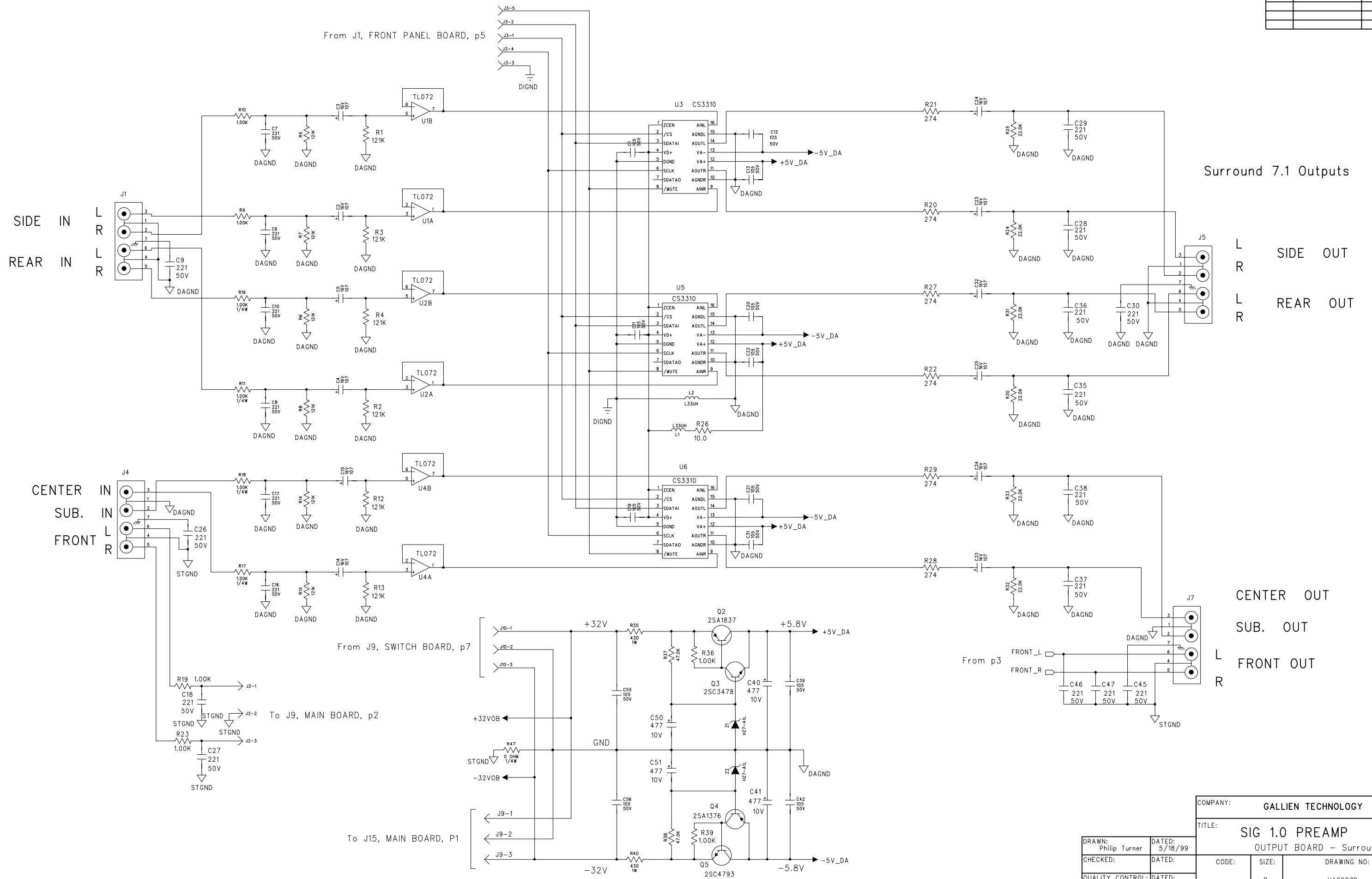
C

B

B

A

A



Unless otherwise stated, all resistance values are 1/8W.

COMPANY: GALLIEN TECHNOLOGY			
TITLE: SIG 1.0 PREAMP OUTPUT BOARD - Surround 7.1			
DRAWN: Philip Turner	DATED: 5/18/99	CODE:	SIZE:
CHECKED:	DATED:	DRAWING NO: HA6027D	REV: D
QUALITY CONTROL:	DATED:	SCALE:	SHEET: 4 OF 8
RELEASED:	DATED:		

Sig 1.0

Front Panel materials.txt

Bill Of Materials for HA6022Cfpanel.sch on Fri Jun 11 07:38:26 1999

PART NUMBER	Reference	Part Name	Description
020-1000-0	D25	1N4148	RECT-FAST, 200MA, 100V, 4NS, DO-35
001-0004-0	U1	4N26	4N26 OPTO-COUPLER SIX PIN 1.5KV
001-0004-0	U7	4N26	4N26 OPTO-COUPLER SIX PIN 1.5KV
001-0004-0	U8	4N26	4N26 OPTO-COUPLER SIX PIN 1.5KV
001-0004-0	U9	4N26	4N26 OPTO-COUPLER SIX PIN 1.5KV
002-0006-0	U5	74HC00	74HC00N, NAND GATE, QUAD, 2IN
002-1259-0	U2	74HC259	74HC259, EIGHT-BIT ADDRESSABLE LATCH
002-1259-0	U3	74HC259	74HC259, EIGHT-BIT ADDRESSABLE LATCH
002-1259-0	U4	74HC259	74HC259, EIGHT-BIT ADDRESSABLE LATCH
030-2103-0	C2	C103C50V	CAP CER AXIAL, 103, 10%, 50V, NPO
030-2103-0	C3	C103C50V	CAP CER AXIAL, 103, 10%, 50V, NPO
030-2103-0	C4	C103C50V	CAP CER AXIAL, 103, 10%, 50V, NPO
030-2103-0	C5	C103C50V	CAP CER AXIAL, 103, 10%, 50V, NPO
030-2103-0	C6	C103C50V	CAP CER AXIAL, 103, 10%, 50V, NPO
030-2103-0	C7	C103C50V	CAP CER AXIAL, 103, 10%, 50V, NPO
030-2103-0	C8	C103C50V	CAP CER AXIAL, 103, 10%, 50V, NPO
030-2103-0	C9	C103C50V	CAP CER AXIAL, 103, 10%, 50V, NPO
030-2103-0	C17	C103C50V	CAP CER AXIAL, 103, 10%, 50V, NPO
030-2103-0	C18	C103C50V	CAP CER AXIAL, 103, 10%, 50V, NPO
030-2103-0	C19	C103C50V	CAP CER AXIAL, 103, 10%, 50V, NPO
030-2103-0	C20	C103C50V	CAP CER AXIAL, 103, 10%, 50V, NPO
030-2103-0	C21	C103C50V	CAP CER AXIAL, 103, 10%, 50V, NPO
030-2103-0	C22	C103C50V	CAP CER AXIAL, 103, 10%, 50V, NPO
030-2103-0	C23	C103C50V	CAP CER AXIAL, 103, 10%, 50V, NPO
030-2103-0	C24	C103C50V	CAP CER AXIAL, 103, 10%, 50V, NPO
030-2104-1	C11	C104C50V1	CAP CER AXIAL, 104, 20%, 50V, Z5U
030-2104-1	C12	C104C50V1	CAP CER AXIAL, 104, 20%, 50V, Z5U
030-2104-1	C13	C104C50V1	CAP CER AXIAL, 104, 20%, 50V, Z5U
030-2104-1	C14	C104C50V1	CAP CER AXIAL, 104, 20%, 50V, Z5U
030-2104-1	C16	C104C50V1	CAP CER AXIAL, 104, 20%, 50V, Z5U
030-2104-1	C25	C104C50V1	CAP CER AXIAL, 104, 20%, 50V, Z5U
030-2104-1	C26	C104C50V1	CAP CER AXIAL, 104, 20%, 50V, Z5U
030-2104-1	C28	C104C50V1	CAP CER AXIAL, 104, 20%, 50V, Z5U
030-2104-1	C30	C104C50V1	CAP CER AXIAL, 104, 20%, 50V, Z5U

Front Panel materials.txt

030-2105-0	C1	C105C50V	CAP CER AXIAL,105,20%,50V,Z5U
030-2105-0	C10	C105C50V	CAP CER AXIAL,105,20%,50V,Z5U
030-2105-0	C15	C105C50V	CAP CER AXIAL,105,20%,50V,Z5U
030-2105-0	C29	C105C50V	CAP CER AXIAL,105,20%,50V,Z5U
030-2105-0	C31	C105C50V	CAP CER AXIAL,105,20%,50V,Z5U
030-2105-0	C32	C105C50V	CAP CER AXIAL,105,20%,50V,Z5U
030-2105-0	C33	C105C50V	CAP CER AXIAL,105,20%,50V,Z5U
030-2105-0	C34	C105C50V	CAP CER AXIAL,105,20%,50V,Z5U
031-0107-0	C35	C107L16	CAP,ELEC,RAD,107,-10%,+50%, 16V
031-0477-0	C27	C477L10	CAP,ELEC,RAD,477,20%,10V
094-0040-0	U6	DIP40-600SOCKE T	SKT,DIP40X.6
093-2000-0	J2	HDR.1X2X10	HDR,.1X2X10, VERT, MALE, SHROUDED
093-2005-0	J4	HDR2MMX7	HDR,2MMX7,VERT,SHROUDED
093-2005-0	J5	HDR2MMX7	HDR,2MMX7,VERT,SHROUDED
093-0151-0	J1	HDR2MMX5VM	HDR,2MMX5,VERT,MALE,LOCKING
093-0024-0	J3	HDR2MMX6VM	HDR,2MMX6,VERT,MALE
081-0010-0	L1	L33UH	INDUCTOR,AX,HIQ,33UH
081-0010-0	L2	L33UH	INDUCTOR,AX,HIQ,33UH
081-0010-0	L3	L33UH	INDUCTOR,AX,HIQ,33UH
081-0010-0	L4	L33UH	INDUCTOR,AX,HIQ,33UH
081-0010-0	L5	L33UH	INDUCTOR,AX,HIQ,33UH
081-0010-0	L6	L33UH	INDUCTOR,AX,HIQ,33UH
081-0010-0	L7	L33UH	INDUCTOR,AX,HIQ,33UH
081-0010-0	L8	L33UH	INDUCTOR,AX,HIQ,33UH
081-0010-0	L9	L33UH	INDUCTOR,AX,HIQ,33UH
025-0024-0	D2	LED-AMBER	LED,AMBER,T1,580NM
025-0024-0	D24	LED-AMBER	LED,AMBER,T1,580NM
025-0030-2	D3	LED-BLUE	LED,BLUE,T1,.190,470NM, E1L4E-5B
025-0030-2	D4	LED-BLUE	LED,BLUE,T1,.190,470NM, E1L4E-5B
025-0030-2	D5	LED-BLUE	LED,BLUE,T1,.190,470NM, E1L4E-5B
025-0030-2	D6	LED-BLUE	LED,BLUE,T1,.190,470NM, E1L4E-5B
025-0030-2	D7	LED-BLUE	LED,BLUE,T1,.190,470NM, E1L4E 5B
025-0030-2	D8	LED-BLUE	LED,BLUE,T1,.190,470NM, E1L4E-5B
025-0030-2	D9	LED-BLUE	LED,BLUE,T1,.190,470NM, E1L4E-5B
025-0030-2	D10	LED-BLUE	LED,BLUE,T1,.190,470NM, E1L4E-5B

Front Panel materials.txt

025-0030-2	D19	LED-BLUE	LED,BLUE,T1,.190,470NM, E1L4E-5B
025-0030-2	D20	LED-BLUE	LED,BLUE,T1,.190,470NM, E1L4E-5B
025-0030-2	D21	LED-BLUE	LED,BLUE,T1,.190,470NM, E1L4E-5B
025-0030-2	D22	LED-BLUE	LED,BLUE,T1,.190,470NM, E1L4E-5B
025-0030-2	D23	LED-BLUE	LED,BLUE,T1,.190,470NM, E1L4E-5B
025-0120-0	D11	LED-GRN	LED,RED,3MM,555NM,12MCD, 20MA,20DEG
025-0120-0	D12	LED-GRN	LED,RED,3MM,555NM,12MCD, 20MA,20DEG
025-0120-0	D13	LED-GRN	LED,RED,3MM,555NM,12MCD, 20MA,20DEG
025-0120-0	D14	LED-GRN	LED,RED,3MM,555NM,12MCD, 20MA,20DEG
025-0120-0	D15	LED-GRN	LED,RED,3MM,555NM,12MCD, 20MA,20DEG
025-0120-0	D16	LED-GRN	LED,RED,3MM,555NM,12MCD, 20MA,20DEG
025-0120-0	D17	LED-GRN	LED,RED,3MM,555NM,12MCD, 20MA,20DEG
025-0120-0	D18	LED-GRN	LED,RED,3MM,555NM,12MCD, 20MA,20DEG
025-0117-0	D1	LED-RED	LED,RED,3MM,660NM,45MCD, 20MA,20DEG
001-2003-0	U10	MC1413	ULN-2003
001-2003-0	U11	MC1413	ULN-2003
001-2003-0	U12	MC1413	ULN-2003
000-0000-0	X16	MH.125/220	.125 HOLE, .220 PAD
000-0000-0	X17	MH.125/220	.125 HOLE, .220 PAD
000-0000-0	X18	MH.125/220	.125 HOLE, .220 PAD
000-0000-0	X19	MH.125/220	.125 HOLE, .220 PAD
000-0000-0	X20	MH.125/220	.125 HOLE, .220 PAD
000 0000 0	X21	MH.125/220	.125 HOLE, .220 PAD
000-0000-0	X22	MH.125/220	.125 HOLE, .220 PAD
000-0000-0	X23	MH.125/220	.125 HOLE, .220 PAD
000-0000-0	X24	MH.125/220	.125 HOLE, .220 PAD
000-0000-0	X25	MH.125/220	.125 HOLE, .220 PAD
010-0012-0	Q1	MPSA06	MPSA06, NPN,80V,500MA,TO-92
010-0012-0	Q2	MPSA06	MPSA06, NPN,80V,500MA,TO-92
010-0012-0	Q3	MPSA06	MPSA06, NPN,80V,500MA,TO-92
010-0012-0	Q4	MPSA06	MPSA06, NPN,80V,500MA,TO-92
010-0012-0	O5	MPSA06	MPSA06, NPN,80V,500MA,TO-92

Front Panel materials.txt

010-0012-0	Q6	MPSA06	MPSA06, NPN, 80V, 500MA, TO-92
010-0012-0	Q7	MPSA06	MPSA06, NPN, 80V, 500MA, TO-92
010-0012-0	Q8	MPSA06	MPSA06, NPN, 80V, 500MA, TO-92
052-1002-0	R22	R1.00K1/4W	RES, METAL FILM, 1/4W, 1%
052-0100-0	R19	R1.00_1/4W	RES, METAL FILM, 1.00 OHM, 1/4W, 1%
050-1002-0	R1	R1.0K1/8W	RES, CARBON FILM, 1K OHM, 1/8W, 5%
050-1002-0	R3	R1.0K1/8W	RES, CARBON FILM, 1K OHM, 1/8W, 5%
050-1002-0	R9	R1.0K1/8W	RES, CARBON FILM, 1K OHM, 1/8W, 5%
050-1002-0	R11	R1.0K1/8W	RES, CARBON FILM, 1K OHM, 1/8W, 5%
050-1002-0	R13	R1.0K1/8W	RES, CARBON FILM, 1K OHM, 1/8W, 5%
050-1002-0	R23	R1.0K1/8W	RES, CARBON FILM, 1K OHM, 1/8W, 5%
050-1002-0	R29	R1.0K1/8W	RES, CARBON FILM, 1K OHM, 1/8W, 5%
050-1001-0	R5	R100_1/8W	RES, CARBON FILM, 100 OHM, 1/8W, 5%
050-1001-0	R6	R100_1/8W	RES, CARBON FILM, 100 OHM, 1/8W, 5%
050-1001-0	R7	R100_1/8W	RES, CARBON FILM, 100 OHM, 1/8W, 5%
050-1001-0	R8	R100_1/8W	RES, CARBON FILM, 100 OHM, 1/8W, 5%
050-1003-0	R2	R10K1/8W	RES, CARBON FILM, 10K OHM, 1/8W, 5%
050-1003-0	R4	R10K1/8W	RES, CARBON FILM, 10K OHM, 1/8W, 5%
050-1003-0	R10	R10K1/8W	RES, CARBON FILM, 10K OHM, 1/8W, 5%
050-1003-0	R24	R10K1/8W	RES, CARBON FILM, 10K OHM, 1/8W, 5%
050-1003-0	R25	R10K1/8W	RES, CARBON FILM, 10K OHM, 1/8W, 5%
050-1003-0	R26	R10K1/8W	RES, CARBON FILM, 10K OHM, 1/8W, 5%
050-1003-0	R28	R10K1/8W	RES, CARBON FILM, 10K OHM, 1/8W, 5%
050-1005-0	R12	R1M1/8W	RES, CARBON FILM, 1M OHM, 1/8W, 5%
051-2002-0	R21	R2.0K1/4W	RES, CARBON FILM, 1/4W
051-2201-0	R15	R220_1/4W	RES, CARBON FILM, 1/4W

Front Panel materials.txt

050-3303-0	R32	R33K1/8W	RES, CARBON FILM, 33K OHM, 1/8W, 5%
051-3901-1	R16	R390_1/4W	RES, CARBON FILM, 390 OHM, 1/4W, 5%
051-3901-1	R20	R390_1/4W	RES, CARBON FILM, 390 OHM, 1/4W, 5%
051-3901-1	R27	R390_1/4W	RES, CARBON FILM, 390 OHM, 1/4W, 5%
050-4702-0	R18	R4.7K1/8W	RES, CARBON FILM, 4.7K OHM, 1/8W, 5%
050-4702-0	R30	R4.7K1/8W	RES, CARBON FILM, 4.7K OHM, 1/8W, 5%
050-4702-0	R31	R4.7K1/8W	RES, CARBON FILM, 4.7K OHM, 1/8W, 5%
054-0621-0	R17	R62_1W	RES, CARBON FILM, 62 OHM, 1W
058-1003-0	R14	RES-SIP10P9R	RES, SIP 10K OHMS X 9
090-0040-1	S1	SW-1PST-MOM-B3 F	SWITCH, PC, SPST, MOM, B3F-4050
090-0040-1	S2	SW-1PST-MOM-B3 F	SWITCH, PC, SPST, MOM, B3F-4050
090-0040-1	S3	SW-1PST-MOM-B3 F	SWITCH, PC, SPST, MOM, B3F-4050
090-0040-1	S4	SW-1PST-MOM-B3 F	SWITCH, PC, SPST, MOM, B3F-4050
090-0040-1	S5	SW-1PST-MOM-B3 F	SWITCH, PC, SPST, MOM, B3F-4050
090-0040-1	S6	SW-1PST-MOM-B3 F	SWITCH, PC, SPST, MOM, B3F-4050
090-0040-1	S7	SW-1PST-MOM-B3 F	SWITCH, PC, SPST, MOM, B3F-4050
090-0040-1	S8	SW-1PST-MOM-B3 F	SWITCH, PC, SPST, MOM, B3F-4050
090-0040-1	S9	SW-1PST-MOM-B3 F	SWITCH, PC, SPST, MOM, B3F-4050
090-0040-1	S10	SW-1PST-MOM-B3 F	SWITCH, PC, SPST, MOM, B3F-4050
090-0040-1	S11	SW-1PST MOM B3 F	SWITCH, PC, SPST, MOM, B3F-4050
025-0003-0	U13	TSOP1738TB1	IR RECEIVER, 38KHZ, W/CLIP, TFMT5380
024-0006-0	Y1	XTAL4MHZ	CRYSTAL, 4 MHZ, CERALOCK, PRIME TIME

Knob materials.txt

Bill Of Materials for HA6024Cknob.sch on Fri Jun 11 07:40:12 1999

PART NUMBER	Reference	Part Name	Description
093-0051-0	J18	HDR2MMX2VM	HDR, 2MMX2, VERT, MALE, LOCK
025-0030-2	D3	LED-BLUE1	LED, BLUE, T1, .190, 470NM, E1L4E-5B
000-0000-0	X5	MH.125/160	.125 HOLE, .160 PAD

Main parts.txt

Bill Of Materials for HA6020Cmain.sch on Fri Jul 02 15:09:41 1999

Reference	PART NUMBER	Part Name	Description
Q3	010-1010-0	2SA970	2SA970, PNP, 120V, 100MA, TO-92
Q4	010-1010-0	2SA970	2SA970, PNP, 120V, 100MA, TO-92
Q6	010-1010-0	2SA970	2SA970, PNP, 120V, 100MA, TO-92
Q8	010-1010-0	2SA970	2SA970, PNP, 120V, 100MA, TO-92
Q15	010-1010-0	2SA970	2SA970, PNP, 120V, 100MA, TO-92
Q16	010-1010-0	2SA970	2SA970, PNP, 120V, 100MA, TO-92
Q31	010-1010-0	2SA970	2SA970, PNP, 120V, 100MA, TO-92
Q32	010-1010-0	2SA970	2SA970, PNP, 120V, 100MA, TO-92
Q10	010-1002-0	2SA1376	2SA1376, PNP, 180V, 100MA, TO-92
Q12	010-1002-0	2SA1376	2SA1376, PNP, 180V, 100MA, TO-92
Q17	010-1002-0	2SA1376	2SA1376, PNP, 180V, 100MA, TO-92
Q19	010-1002-0	2SA1376	2SA1376, PNP, 180V, 100MA, TO-92
Q24	010-1002-0	2SA1376	2SA1376, PNP, 180V, 100MA, TO-92
Q25	010-1002-0	2SA1376	2SA1376, PNP, 180V, 100MA, TO-92
Q34	010-1002-0	2SA1376	2SA1376, PNP, 180V, 100MA, TO-92
Q36	010-1002-0	2SA1376	2SA1376, PNP, 180V, 100MA, TO-92
Q37	010-1002-0	2SA1376	2SA1376, PNP, 180V, 100MA, TO-92
Q45	010-1002-0	2SA1376	2SA1376, PNP, 180V, 100MA, TO-92
Q47	010-1002-0	2SA1376	2SA1376, PNP, 180V, 100MA, TO-92
Q51	010-1002-0	2SA1376	2SA1376, PNP, 180V, 100MA, TO-92
Q58	010-1002-0	2SA1376	2SA1376, PNP, 180V, 100MA, TO-92
Q60	010-1002-0	2SA1376	2SA1376, PNP, 180V, 100MA, TO-92
Q66	010-1002-0	2SA1376	2SA1376, PNP, 180V, 100MA, TO-92
Q67	010-1002-0	2SA1376	2SA1376, PNP, 180V, 100MA, TO-92
Q42	012-1002-0	2SA1837	2SA1837, PNP, 200V, 1.5A, 2-10R1A
Q61	012-1002-0	2SA1837	2SA1837, PNP, 200V, 1.5A, 2-10R1A
Q1	010-0010-0	2SC2240	2SC2240, NPN, 120V, 100MA, 300MW, TO92
Q2	010-0010-0	2SC2240	2SC2240, NPN, 120V, 100MA, 300MW, TO92
Q5	010-0010-0	2SC2240	2SC2240, NPN, 120V, 100MA, 300MW, TO92
Q7	010-0010-0	2SC2240	2SC2240, NPN, 120V, 100MA, 300MW, TO92

Main parts.txt

Q13	010-0010-0	2SC2240	2SC2240, NPN, 120V,100MA, 300MW, TO92
Q14	010-0010-0	2SC2240	2SC2240, NPN, 120V,100MA, 300MW, TO92
Q27	010-0010-0	2SC2240	2SC2240, NPN, 120V,100MA, 300MW, TO92
Q28	010-0010-0	2SC2240	2SC2240, NPN, 120V,100MA, 300MW, TO92
Q29	010-0010-0	2SC2240	2SC2240, NPN, 120V,100MA, 300MW, TO92
Q30	010-0010-0	2SC2240	2SC2240, NPN, 120V,100MA, 300MW, TO92
Q33	010-0010-0	2SC2240	2SC2240, NPN, 120V,100MA, 300MW, TO92
Q49	010-0010-0	2SC2240	2SC2240, NPN, 120V,100MA, 300MW, TO92
Q50	010-0010-0	2SC2240	2SC2240, NPN, 120V,100MA, 300MW, TO92
Q53	010-0010-0	2SC2240	2SC2240, NPN, 120V,100MA, 300MW, TO92
Q54	010-0010-0	2SC2240	2SC2240, NPN, 120V,100MA, 300MW, TO92
Q55	010-0010-0	2SC2240	2SC2240, NPN, 120V,100MA, 300MW, TO92
Q9	010-0001-0	2SC3478	2SC3478, NPN,180V,100MA,TO-92
Q11	010-0001-0	2SC3478	2SC3478, NPN,180V,100MA,TO-92
Q18	010-0001-0	2SC3478	2SC3478, NPN,180V,100MA,TO-92
Q20	010-0001-0	2SC3478	2SC3478, NPN,180V,100MA,TO-92
Q23	010-0001-0	2SC3478	2SC3478, NPN,180V,100MA,TO-92
Q26	010-0001-0	2SC3478	2SC3478, NPN,180V,100MA,TO-92
Q35	010-0001-0	2SC3478	2SC3478, NPN,180V,100MA,TO-92
Q38	010-0001-0	2SC3478	2SC3478, NPN,180V,100MA,TO-92
Q44	010-0001-0	2SC3478	2SC3478, NPN,180V,100MA,TO-92
Q46	010-0001-0	2SC3478	2SC3478, NPN,180V,100MA,TO-92
Q48	010-0001-0	2SC3478	2SC3478, NPN,180V,100MA,TO-92
Q52	010-0001-0	2SC3478	2SC3478, NPN,180V,100MA,TO-92
Q56	010-0001-0	2SC3478	2SC3478, NPN,180V,100MA,TO-92
Q57	010-0001-0	2SC3478	2SC3478, NPN,180V,100MA,TO-92
Q59	010-0001-0	2SC3478	2SC3478, NPN,180V,100MA,TO-92
Q63	010-0001-0	2SC3478	2SC3478, NPN,180V,100MA,TO-92
Q43	012-0002-0	2SC4793	2SC4793,NPN,200V,1.5A,2-10R1A
Q62	012-0002-0	2SC4793	2SC4793,NPN,200V,1.5A,2-10R1A
C5	035-2101-0	C101P50V	CAP,POLYPROPYLENE,FILM/FOIL, 101,5%, 50V
C6	035-2101-0	C101P50V	CAP,POLYPROPYLENE,FILM/FOIL, 101,5%, 50V

Main parts.txt

C25	035-2101-0	C101P50V	CAP, POLYPROPYLENE, FILM/FOIL, 101,5%, 50V
C61	035-2101-0	C101P50V	CAP, POLYPROPYLENE, FILM/FOIL, 101,5%, 50V
C2	035-2103-0	C103P50V	CAP, POLYPROPYLENE, FILM/FOIL, 103,5%, 50V
C8	035-2103-0	C103P50V	CAP, POLYPROPYLENE, FILM/FOIL, 103,5%, 50V
C13	030-2104-1	C104C50V1	CAP CER AXIAL, 104, 20%, 50V, Z5U
C14	030-2104-1	C104C50V1	CAP CER AXIAL, 104, 20%, 50V, Z5U
C9	035-2104-0	C104P50V	CAP, POLYPROPYLENE, FILM/FOIL, 104,5%, 50V
C17	035-2104-0	C104P50V	CAP, POLYPROPYLENE, FILM/FOIL, 104,5%, 50V
C20	035-2104-0	C104P50V	CAP, POLYPROPYLENE, FILM/FOIL, 104,5%, 50V
C40	035-2104-0	C104P50V	CAP, POLYPROPYLENE, FILM/FOIL, 104,5%, 50V
C52	035-2104-0	C104P50V	CAP, POLYPROPYLENE, FILM/FOIL, 104,5%, 50V
C56	035-2104-0	C104P50V	CAP, POLYPROPYLENE, FILM/FOIL, 104,5%, 50V
C60	035-2104-0	C104P50V	CAP, POLYPROPYLENE, FILM/FOIL, 104,5%, 50V
C62	035-2104-0	C104P50V	CAP, POLYPROPYLENE, FILM/FOIL, 104,5%, 50V
C75	035-2104-0	C104P50V	CAP, POLYPROPYLENE, FILM/FOIL, 104,5%, 50V
C82	035-2104-0	C104P50V	CAP, POLYPROPYLENE, FILM/FOIL, 104,5%, 50V
C116	035-2104-0	C104P50V	CAP, POLYPROPYLENE, FILM/FOIL, 104,5%, 50V
C117	035-2104-0	C104P50V	CAP, POLYPROPYLENE, FILM/FOIL, 104,5%, 50V
C32	030-2105-0	C105C50V	CAP CER AXIAL, 105, 20%, 50V, Z5U
C33	030-2105-0	C105C50V	CAP CER AXIAL, 105, 20%, 50V, Z5U
C34	030-2105-0	C105C50V	CAP CER AXIAL, 105, 20%, 50V, Z5U
C35	030-2105-0	C105C50V	CAP CER AXIAL, 105, 20%, 50V, Z5U
C69	030-2105-0	C105C50V	CAP CER AXIAL, 105, 20%, 50V, Z5U
C72	030 2105 0	C105C50V	CAP CER AXIAL, 105, 20%, 50V, Z5U
C89	030-2105-0	C105C50V	CAP CER AXIAL, 105, 20%, 50V, Z5U
C90	030-2105-0	C105C50V	CAP CER AXIAL, 105, 20%, 50V, Z5U
C93	030-2105-0	C105C50V	CAP CER AXIAL, 105, 20%, 50V, Z5U
C94	030-2105-0	C105C50V	CAP CER AXIAL, 105, 20%, 50V, Z5U
C97	030-2105-0	C105C50V	CAP CER AXIAL, 105, 20%, 50V, Z5U
C100	030-2105-0	C105C50V	CAP CER AXIAL, 105, 20%, 50V, Z5U

Main parts.txt

C101	030-2105-0	C105C50V	CAP CER AXIAL,105,20%,50V,Z5U
C102	030-2105-0	C105C50V	CAP CER AXIAL,105,20%,50V,Z5U
C104	030-2105-0	C105C50V	CAP CER AXIAL,105,20%,50V,Z5U
C107	030-2105-0	C105C50V	CAP CER AXIAL,105,20%,50V,Z5U
C111	030-2105-0	C105C50V	CAP CER AXIAL,105,20%,50V,Z5U
C119	030-2105-0	C105C50V	CAP CER AXIAL,105,20%,50V,Z5U
C120	030-2105-0	C105C50V	CAP CER AXIAL,105,20%,50V,Z5U
C122	030-2105-0	C105C50V	CAP CER AXIAL,105,20%,50V,Z5U
C16	031-2106-0	C106L50	CAP,ELEC,RAD,106,-10%+50%, 50V
C24	031-2106-0	C106L50	CAP,ELEC,RAD,106,-10%+50%, 50V
C55	031-2106-0	C106L50	CAP,ELEC,RAD,106,-10%+50%, 50V
C64	031-2106-0	C106L50	CAP,ELEC,RAD,106,-10%+50%, 50V
C87	031-0107-0	C107L16	CAP,ELEC,RAD,107,-10%,+50%, 16V
C96	031-0107-0	C107L16	CAP,ELEC,RAD,107,-10%,+50%, 16V
C79	031-1107-0	C107L25	CAP,ELEC,RAD,107,25V
C115	031-1107-0	C107L25	CAP,ELEC,RAD,107,25V
C11	035-8100-0	C10M500V	CAP,MICA,10PF,5%,500V
C12	035-8100-0	C10M500V	CAP,MICA,10PF,5%,500V
C18	035-2121-0	C121P50V	CAP,POLYPROPYLENE,FILM/FOIL, 121,5%,50V
C19	035-2121-0	C121P50V	CAP,POLYPROPYLENE,FILM/FOIL, 121,5%,50V
C23	035-2182-0	C182P630V	CAP,POLYPROPYLENE,FILM/FOIL, 182,5%,630V
C58	035-2182-0	C182P630V	CAP,POLYPROPYLENE,FILM/FOIL, 182,5%,630V
C85	035-8200-0	C20M500V	CAP,MICA,20PF,5%,500V
C86	035-8200-0	C20M500V	CAP,MICA,20PF,5%,500V
C4	030-2221-0	C221C50V	CAP CER AXIAL,221,10%,50V,NPO
C7	030-2221-0	C221C50V	CAP CER AXIAL,221,10%,50V,NPO
C43	030-2221-0	C221C50V	CAP CER AXIAL,221,10%,50V,NPO
C44	030-2221-0	C221C50V	CAP CER AXIAL,221,10%,50V,NPO
C45	030-2221-0	C221C50V	CAP CER AXIAL,221,10%,50V,NPO
C46	030-2221-0	C221C50V	CAP CER AXIAL,221,10%,50V,NPO
C47	030-2221-0	C221C50V	CAP CER AXIAL,221,10%,50V,NPO
C48	030-2221-0	C221C50V	CAP CER AXIAL,221,10%,50V,NPO
C49	030-2221-0	C221C50V	CAP CER AXIAL,221,10%,50V,NPO
C50	030-2221-0	C221C50V	CAP CER AXIAL,221,10%,50V,NPO
C51	030-2221-0	C221C50V	CAP CER AXIAL,221,10%,50V,NPO
C76	030-2221-0	C221C50V	CAP CER AXIAL,221,10%,50V,NPO

Main parts.txt

C77	030-2221-0	C221C50V	CAP CER AXIAL, 221, 10%, 50V, NPO
C78	030-2221-0	C221C50V	CAP CER AXIAL, 221, 10%, 50V, NPO
C112	030-2221-0	C221C50V	CAP CER AXIAL, 221, 10%, 50V, NPO
C113	030-2221-0	C221C50V	CAP CER AXIAL, 221, 10%, 50V, NPO
C114	030-2221-0	C221C50V	CAP CER AXIAL, 221, 10%, 50V, NPO
C41	031-0226-0	C226L16	CAP, ELEC, RAD, 226, -10%+50%, 16V
C42	031-0226-0	C226L16	CAP, ELEC, RAD, 226, -10%+50%, 16V
C1	035-2331-0	C331P50V	CAP, POLYPROPYLENE, FILM/FOIL, 331, 5%, 50V
C3	035-2331-0	C331P50V	CAP, POLYPROPYLENE, FILM/FOIL, 331, 5%, 50V
C39	035-8330-0	C33M500V	CAP, MICA, 33PF, 5%, 500V
C73	035-8330-0	C33M500V	CAP, MICA, 33PF, 5%, 500V
C10	031-1476-0	C476L25	CAP, ELEC, NP, RAD, 476, 20%, 25V
C22	031-1476-0	C476L25	CAP, ELEC, NP, RAD, 476, 20%, 25V
C53	031-1476-0	C476L25	CAP, ELEC, NP, RAD, 476, 20%, 25V
C57	031-1476-0	C476L25	CAP, ELEC, NP, RAD, 476, 20%, 25V
C83	031-1476-0	C476L25	CAP, ELEC, NP, RAD, 476, 20%, 25V
C84	031-1476-0	C476L25	CAP, ELEC, NP, RAD, 476, 20%, 25V
C15	031-1477-0	C477L25	CAP, ELEC, RAD, 477, 25V
C27	031-1477-0	C477L25	CAP, ELEC, RAD, 477, 25V
C28	031-1477-0	C477L25	CAP, ELEC, RAD, 477, 25V
C29	031-1477-0	C477L25	CAP, ELEC, RAD, 477, 25V
C30	031-1477-0	C477L25	CAP, ELEC, RAD, 477, 25V
C31	031-1477-0	C477L25	CAP, ELEC, RAD, 477, 25V
C54	031-1477-0	C477L25	CAP, ELEC, RAD, 477, 25V
C65	031-1477-0	C477L25	CAP, ELEC, RAD, 477, 25V
C66	031-1477-0	C477L25	CAP, ELEC, RAD, 477, 25V
C67	031-1477-0	C477L25	CAP, ELEC, RAD, 477, 25V
C70	031-1477-0	C477L25	CAP, ELEC, RAD, 477, 25V
C74	031-1477-0	C477L25	CAP, ELEC, RAD, 477, 25V
C80	031-1477-0	C477L25	CAP, ELEC, RAD, 477, 25V
C81	031-1477-0	C477L25	CAP, ELEC, RAD, 477, 25V
C99	031-1477-0	C477L25	CAP, ELEC, RAD, 477, 25V
C103	031-1477-0	C477L25	CAP, ELEC, RAD, 477, 25V
C105	031-1477-0	C477L25	CAP, ELEC, RAD, 477, 25V
C108	031-1477-0	C477L25	CAP, ELEC, RAD, 477, 25V
C109	031-1477-0	C477L25	CAP, ELEC, RAD, 477, 25V
C110	031-1477-0	C477L25	CAP, ELEC, RAD, 477, 25V
C88	031-2477-0	C477L35	CAP, ELEC, RAD, 477, 25V
C91	031-2477-0	C477L35	CAP, ELEC, RAD, 477, 25V
C92	031-2477-0	C477L35	CAP, ELEC, RAD, 477, 25V
C95	031-2477-0	C477L35	CAP, ELEC, RAD, 477, 25V
C98	031-2477-0	C477L35	CAP, ELEC, RAD, 477, 25V
C106	031-2477-0	C477L35	CAP, ELEC, RAD, 477, 25V
C118	031-2477-0	C477L35	CAP, ELEC, RAD, 477, 25V

Main parts.txt

C121	031-2477-0	C477L35	CAP, ELEC, RAD, 477, 25V
C21	035-2562-0	C562P400V	CAP, POLYPROPYLENE, FILM/FOIL, 562, 5%, 400V
C59	035-2562-0	C562P400V	CAP, POLYPROPYLENE, FILM/FOIL, 562, 5%, 400V
C26	035-2681-0	C681P50V	CAP, POLYPROPYLENE, FILM/FOIL, 681, 5%, 50V
C63	035-2681-0	C681P50V	CAP, POLYPROPYLENE, FILM/FOIL, 681, 5%, 50V
Z2	020-0011-0	DIODE-HZ11-B2L	ZENER DIODE, HZ11LB2
Z3	020-0011-0	DIODE-HZ11-B2L	ZENER DIODE, HZ11LB2
Z1	020-0020-0	DIODE-HZ20-2L	ZENER DIODE, HZ20L2
Z5	020-0020-0	DIODE-HZ20-2L	ZENER DIODE, HZ20L2
Z6	020-0020-0	DIODE-HZ20-2L	ZENER DIODE, HZ20L2
Z7	020-0020-0	DIODE-HZ20-2L	ZENER DIODE, HZ20L2
Z4	020-0027-0	DIODE-HZ27-2L	ZENER DIODE, HZ27L2
Z8	020-0027-0	DIODE-HZ27-2L	ZENER DIODE, HZ27L2
J15	093-0062-0	HDR-1X3VM	HDR, .1X3, VERT, MALE, LOCK
J3	093-0051-0	HDR-2MMX2V	HDR, 2MMX2, VERT, MALE, LOCK
J6	093-0051-0	HDR-2MMX2V	HDR, 2MMX2, VERT, MALE, LOCK
J7	093-0051-0	HDR-2MMX2V	HDR, 2MMX2, VERT, MALE, LOCK
J12	093-0051-0	HDR-2MMX2V	HDR, 2MMX2, VERT, MALE, LOCK
J14	093-0051-0	HDR-2MMX2V	HDR, 2MMX2, VERT, MALE, LOCK
J11	093-2000-0	HDR.1X2X10	HDR, .1X2X10, VERT, MALE, SHROUDED
J2	093-0051-0	HDR2MMX2VM	HDR, 2MMX2, VERT, MALE, LOCK
J16	093-0051-0	HDR2MMX2VM	HDR, 2MMX2, VERT, MALE, LOCK
J19	093-0051-0	HDR2MMX2VM	HDR, 2MMX2, VERT, MALE, LOCK
J9	093-0043-0	HDR2MMX3V	HDR, 2MMX3, VERT, MALE, LOCK, GOLD
J18	093-0151-0	HDR2MMX5VM	HDR, 2MMX5, VERT, MALE, LOCKING
H1	130-0493-0	HEATSINK220	HEATSINK TO-220
H2	130-0493-0	HEATSINK220	HEATSINK TO-220
Q64	010-2010-0	J113	J113, N-JFET, 35V, 2MA, TO-92
Q65	010-2010-0	J113	J113, N-JFET, 35V, 2MA, TO-92
L1	081-0062-0	L2743FB	INDUCTOR, 2743002111 FERRITE BEAD, AXIEL
L2	081-0062-0	L2743FB	INDUCTOR, 2743002111 FERRITE BEAD, AXIEL
L3	081-0062-0	L2743FB	INDUCTOR, 2743002111 FERRITE BEAD, AXIEL
L4	081-0062-0	L2743FB	INDUCTOR, 2743002111 FERRITE BEAD, AXIEL
X1	000-0000-0	MH.125/220	.125 HOLE, .220 PAD
X2	000-0000-0	MH.125/220	.125 HOLE, .220 PAD
X3	000-0000-0	MH.125/220	.125 HOLE, .220 PAD

Main parts.txt

X4	000-0000-0	MH.125/220	.125 HOLE, .220 PAD
X5	000-0000-0	MH.125/220	.125 HOLE, .220 PAD
X6	000-0000-0	MH.125/220	.125 HOLE, .220 PAD
R1	060-1002-0	R1.00K1/8W	RES,METAL FILM, 1.00K, 1/8W, 1%
R2	060-1002-0	R1.00K1/8W	RES,METAL FILM, 1.00K, 1/8W, 1%
R38	060-1002-0	R1.00K1/8W	RES,METAL FILM, 1.00K, 1/8W, 1%
R50	060-1002-0	R1.00K1/8W	RES,METAL FILM, 1.00K, 1/8W, 1%
R60	060-1002-0	R1.00K1/8W	RES,METAL FILM, 1.00K, 1/8W, 1%
R63	060-1002-0	R1.00K1/8W	RES,METAL FILM, 1.00K, 1/8W, 1%
R107	060-1002-0	R1.00K1/8W	RES,METAL FILM, 1.00K, 1/8W, 1%
R116	060-1002-0	R1.00K1/8W	RES,METAL FILM, 1.00K, 1/8W, 1%
R139	060-1002-0	R1.00K1/8W	RES,METAL FILM, 1.00K, 1/8W, 1%
R145	060-1002-0	R1.00K1/8W	RES,METAL FILM, 1.00K, 1/8W, 1%
R180	060-1002-0	R1.00K1/8W	RES,METAL FILM, 1.00K, 1/8W, 1%
R181	060-1002-0	R1.00K1/8W	RES,METAL FILM, 1.00K, 1/8W, 1%
R185	060-1002-0	R1.00K1/8W	RES,METAL FILM, 1.00K, 1/8W, 1%
R186	060-1002-0	R1.00K1/8W	RES,METAL FILM, 1.00K, 1/8W, 1%
R187	060-1002-0	R1.00K1/8W	RES,METAL FILM, 1.00K, 1/8W, 1%
R202	060-1002-0	R1.00K1/8W	RES,METAL FILM, 1.00K, 1/8W, 1%
R35	060-1212-0	R1.21K1/8W	RES,METAL FILM 1/8W,1%,1.21K OHM
R36	060-1212-0	R1.21K1/8W	RES,METAL FILM 1/8W,1%,1.21K OHM
R100	060-1212-0	R1.21K1/8W	RES,METAL FILM 1/8W,1%,1.21K OHM
R101	060-1212-0	R1.21K1/8W	RES,METAL FILM 1/8W,1%,1.21K OHM
R178	060-1212-0	R1.21K1/8W	RES,METAL FILM 1/8W,1%,1.21K OHM
R200	060-1212-0	R1.21K1/8W	RES,METAL FILM 1/8W,1%,1.21K

Main parts.txt

			OHM
R12	052-1502-0	R1.50K1/4W	RES, METAL FILM, 1.50K OHM, 1/4W, 1%
R13	052-1502-0	R1.50K1/4W	RES, METAL FILM, 1.50K OHM, 1/4W, 1%
R16	052-1502-0	R1.50K1/4W	RES, METAL FILM, 1.50K OHM, 1/4W, 1%
R165	060-1003-0	R10.0K1/8W	RES, METAL FILM 1/8W, 1%, 10.0K
R169	060-1003-0	R10.0K1/8W	RES, METAL FILM 1/8W, 1%, 10.0K
R32	060-1004-0	R100.K1/8W	RES, METAL FILM, 100K, 1/8W, 1%, 100K
R118	060-1004-0	R100.K1/8W	RES, METAL FILM, 100K, 1/8W, 1%, 100K
R45	052-1001-0	R100._1/4W	RES, METAL FILM, 100 OHM, 1/4W, 1%
R48	052-1001-0	R100._1/4W	RES, METAL FILM, 100 OHM, 1/4W, 1%
R109	052-1001-0	R100._1/4W	RES, METAL FILM, 100 OHM, 1/4W, 1%
R110	052-1001-0	R100._1/4W	RES, METAL FILM, 100 OHM, 1/4W, 1%
R142	052-1001-0	R100._1/4W	RES, METAL FILM, 100 OHM, 1/4W, 1%
R179	052-1001-0	R100._1/4W	RES, METAL FILM, 100 OHM, 1/4W, 1%
R193	052-1001-0	R100._1/4W	RES, METAL FILM, 100 OHM, 1/4W, 1%
R195	052-1001-0	R100._1/4W	RES, METAL FILM, 100 OHM, 1/4W, 1%
R3	060-1001-0	R100._1/8W	RES, METAL FILM, 100 OHMS, 1/8W, 1%
R85	060-1001-0	R100._1/8W	RES, METAL FILM, 100 OHMS, 1/8W, 1%
R86	060-1001-0	R100._1/8W	RES, METAL FILM, 100 OHMS, 1/8W, 1%
R87	060-1001-0	R100._1/8W	RES, METAL FILM, 100 OHMS, 1/8W, 1%
R88	060-1001-0	R100._1/8W	RES, METAL FILM, 100 OHMS, 1/8W, 1%
R89	060-1001-0	R100._1/8W	RES, METAL FILM, 100 OHMS, 1/8W, 1%
R90	060-1001-0	R100._1/8W	RES, METAL FILM, 100 OHMS, 1/8W, 1%
R91	060-1001-0	R100._1/8W	RES, METAL FILM, 100 OHMS, 1/8W, 1%
R102	060-1001-0	R100._1/8W	RES, METAL FILM, 100 OHMS,

Main parts.txt

			1/8W, 1%
R143	060-1001-0	R100._1/8W	RES, METAL FILM, 100 OHMS, 1/8W, 1%
R144	060-1001-0	R100._1/8W	RES, METAL FILM, 100 OHMS, 1/8W, 1%
R196	060-1001-0	R100._1/8W	RES, METAL FILM, 100 OHMS, 1/8W, 1%
R184	060-1203-0	R12.0K1/8W	RES, METAL FILM 1/8W, 1%, 12.0K
R203	060-1203-0	R12.0K1/8W	RES, METAL FILM 1/8W, 1%, 12.0K
R30	060-1214-0	R121.K1/8W	RES, METAL FILM, 121K OHM, 1/8W, 1%
R81	060-1214-0	R121.K1/8W	RES, METAL FILM, 121K OHM, 1/8W, 1%
R83	060-1214-0	R121.K1/8W	RES, METAL FILM, 121K OHM, 1/8W, 1%
R94	060-1214-0	R121.K1/8W	RES, METAL FILM, 121K OHM, 1/8W, 1%
R146	060-1214-0	R121.K1/8W	RES, METAL FILM, 121K OHM, 1/8W, 1%
R147	060-1214-0	R121.K1/8W	RES, METAL FILM, 121K OHM, 1/8W, 1%
R149	060-1214-0	R121.K1/8W	RES, METAL FILM, 121K OHM, 1/8W, 1%
R152	060-1214-0	R121.K1/8W	RES, METAL FILM, 121K OHM, 1/8W, 1%
R190	060-1214-0	R121.K1/8W	RES, METAL FILM, 121K OHM, 1/8W, 1%
R191	060-1214-0	R121.K1/8W	RES, METAL FILM, 121K OHM, 1/8W, 1%
R46	060-1501-0	R150._1/8W	RES, METAL FILM 1/8W, 1%, 150 OHM
R117	060-1501-0	R150._1/8W	RES, METAL FILM 1/8W, 1%, 150 OHM
R51	050-1501-0	R150_1/8W	RES, CARBON FILM, 150 OHM, 1/8W, 5%
R52	050-1501-0	R150_1/8W	RES, CARBON FILM, 150 OHM, 1/8W, 5%
R108	060-1803-0	R18.0K1/8W	RES, METAL FILM, 18.0K, 1% , 1/8W
R197	060-1803-0	R18.0K1/8W	RES, METAL FILM, 18.0K, 1% , 1/8W
R66	060-2202-0	R2.20K1/8W	RES, METAL FILM 1/8W, 1%, 2.20K
R70	060-2202-0	R2.20K1/8W	RES, METAL FILM 1/8W, 1%, 2.20K
R166	060-2202-0	R2.20K1/8W	RES, METAL FILM 1/8W, 1%, 2.20K
R170	060-2202-0	R2.20K1/8W	RES, METAL FILM 1/8W, 1%, 2.20K
R6	060-0220-0	R2.20_1/8W	RES, METAL FILM, 2.2 OHM,

Main parts.txt

R10	060-0220-0	R2.20_1/8W	1/8W, 1% RES, METAL FILM, 2.2 OHM, 1/8W, 1%
R29	060-0220-0	R2.20_1/8W	RES, METAL FILM, 2.2 OHM, 1/8W, 1%
R95	060-0220-0	R2.20_1/8W	RES, METAL FILM, 2.2 OHM, 1/8W, 1%
R49	052-2212-0	R2.21K1/4W	RES, METAL FILM, 1/4W, 1%, 2.21K
R111	052-2212-0	R2.21K1/4W	RES, METAL FILM, 1/4W, 1%, 2.21K
R7	060-2203-0	R22.0K1/8W	RES, METAL FILM, 22K OHM, 1/8W, 1%
R8	060-2203-0	R22.0K1/8W	RES, METAL FILM, 22K OHM, 1/8W, 1%
R53	052-2200-0	R22.0_1/4W	RES, METAL FILM, 22.0 OHM, 1/4W, 1%
R54	052-2200-0	R22.0_1/4W	RES, METAL FILM, 22.0 OHM, 1/4W, 1%
R119	052-2200-0	R22.0_1/4W	RES, METAL FILM, 22.0 OHM, 1/4W, 1%
R120	052-2200-0	R22.0_1/4W	RES, METAL FILM, 22.0 OHM, 1/4W, 1%
R121	052-2200-0	R22.0_1/4W	RES, METAL FILM, 22.0 OHM, 1/4W, 1%
R122	052-2200-0	R22.0_1/4W	RES, METAL FILM, 22.0 OHM, 1/4W, 1%
R124	052-2200-0	R22.0_1/4W	RES, METAL FILM, 22.0 OHM, 1/4W, 1%
R125	052-2200-0	R22.0_1/4W	RES, METAL FILM, 22.0 OHM, 1/4W, 1%
R174	052-2200-0	R22.0_1/4W	RES, METAL FILM, 22.0 OHM, 1/4W, 1%
R175	052-2200-0	R22.0_1/4W	RES, METAL FILM, 22.0 OHM, 1/4W, 1%
R176	052-2200-0	R22.0_1/4W	RES, METAL FILM, 22.0 OHM, 1/4W, 1%
R198	052-2200-0	R22.0_1/4W	RES, METAL FILM, 22.0 OHM, 1/4W, 1%
R15	051-2201-0	R220_1/4W	RES, CARBON FILM, 1/4W
R25	060-2211-0	R221._1/8W	RES, METAL FILM, 221 OHM, 1/8W, 1%
R33	060-2211-0	R221._1/8W	RES, METAL FILM, 221 OHM, 1/8W, 1%
R34	060-2211-0	R221._1/8W	RES, METAL FILM, 221 OHM, 1/8W, 1%
R40	060-2211-0	R221._1/8W	RES, METAL FILM, 221 OHM, 1/8W, 1%

Main parts.txt

R41	060-2211-0	R221._1/8W	RES, METAL FILM, 221 OHM, 1/8W, 1%
R64	060-2211-0	R221._1/8W	RES, METAL FILM, 221 OHM, 1/8W, 1%
R73	060-2211-0	R221._1/8W	RES, METAL FILM, 221 OHM, 1/8W, 1%
R74	060-2211-0	R221._1/8W	RES, METAL FILM, 221 OHM, 1/8W, 1%
R77	060-2211-0	R221._1/8W	RES, METAL FILM, 221 OHM, 1/8W, 1%
R78	060-2211-0	R221._1/8W	RES, METAL FILM, 221 OHM, 1/8W, 1%
R92	060-2211-0	R221._1/8W	RES, METAL FILM, 221 OHM, 1/8W, 1%
R98	060-2211-0	R221._1/8W	RES, METAL FILM, 221 OHM, 1/8W, 1%
R99	060-2211-0	R221._1/8W	RES, METAL FILM, 221 OHM, 1/8W, 1%
R104	060-2211-0	R221._1/8W	RES, METAL FILM, 221 OHM, 1/8W, 1%
R105	060-2211-0	R221._1/8W	RES, METAL FILM, 221 OHM, 1/8W, 1%
R138	060-2211-0	R221._1/8W	RES, METAL FILM, 221 OHM, 1/8W, 1%
R156	060-2211-0	R221._1/8W	RES, METAL FILM, 221 OHM, 1/8W, 1%
R158	060-2211-0	R221._1/8W	RES, METAL FILM, 221 OHM, 1/8W, 1%
R161	060-2211-0	R221._1/8W	RES, METAL FILM, 221 OHM, 1/8W, 1%
R163	060-2211-0	R221._1/8W	RES, METAL FILM, 221 OHM, 1/8W, 1%
R82	060-2214-1	R221K_1/8W	RES, METAL FILM, 221K OHM, 1/8W, 1%
R84	060-2214-1	R221K_1/8W	RES, METAL FILM, 221K OHM, 1/8W, 1%
R9	060-2741-0	R274._1/8W	RES, METAL FILM, 274 OHM, 1/8W, 1%
R11	060-2741-0	R274._1/8W	RES, METAL FILM, 274 OHM, 1/8W, 1%
R14	060-2741-0	R274._1/8W	RES, METAL FILM, 274 OHM, 1/8W, 1%
R23	060-2741-0	R274._1/8W	RES, METAL FILM, 274 OHM, 1/8W, 1%
R188	060-2741-0	R274._1/8W	RES, METAL FILM, 274 OHM, 1/8W, 1%

Main parts.txt

R189	060-2741-0	R274._1/8W	RES, METAL FILM, 274 OHM, 1/8W, 1%
R47	052-3322-0	R3.32K1/4W	RES, METAL FILM, 3.32K OHM, 1/4W, 1%
R62	052-3322-0	R3.32K1/4W	RES, METAL FILM, 3.32K OHM, 1/4W, 1%
R68	052-3322-0	R3.32K1/4W	RES, METAL FILM, 3.32K OHM, 1/4W, 1%
R115	052-3322-0	R3.32K1/4W	RES, METAL FILM, 3.32K OHM, 1/4W, 1%
R134	052-3322-0	R3.32K1/4W	RES, METAL FILM, 3.32K OHM, 1/4W, 1%
R136	052-3322-0	R3.32K1/4W	RES, METAL FILM, 3.32K OHM, 1/4W, 1%
R69	052-3922-0	R3.92K1/4W	RES, METAL FILM, 3.92K OHM, 1/4W, 1%
R137	052-3922-0	R3.92K1/4W	RES, METAL FILM, 3.92K OHM, 1/4W, 1%
R18	052-0331-0	R33.0_1/4W	RES, METAL FILM, 33.0 OHM, 1%, 1/4W
R21	052-0331-0	R33.0_1/4W	RES, METAL FILM, 33.0 OHM, 1%, 1/4W
R19	060-3320-0	R33.2_1/8W	RES, METAL FILM 1/8W, 1%
R20	060-3320-0	R33.2_1/8W	RES, METAL FILM 1/8W, 1%
R22	060-3320-0	R33.2_1/8W	RES, METAL FILM 1/8W, 1%
R26	060-3320-0	R33.2_1/8W	RES, METAL FILM 1/8W, 1%
R72	060-3321-0	R332._1/8W	RES, METAL FILM, 332 OHM, 1/8W, 1%
R140	060-3321-0	R332._1/8W	RES, METAL FILM, 332 OHM, 1/8W, 1%
R148	060-3321-0	R332._1/8W	RES, METAL FILM, 332 OHM, 1/8W, 1%
R151	060-3321-0	R332._1/8W	RES, METAL FILM, 332 OHM, 1/8W, 1%
R164	060-3321-0	R332._1/8W	RES, METAL FILM, 332 OHM, 1/8W, 1%
R173	060-3321-0	R332._1/8W	RES, METAL FILM, 332 OHM, 1/8W, 1%
R42	060-3903-0	R39.0K1/8W	RES, METAL FILM, 39.0K, 1% , 1/8W
R113	060-3903-0	R39.0K1/8W	RES, METAL FILM, 39.0K, 1% , 1/8W
R61	052-3921-0	R392_1/4W	RES, METAL FILM, 1/4W, 1%, 392 OHM
R65	052-3921-0	R392_1/4W	RES, METAL FILM, 1/4W, 1%, 392 OHM

Main parts.txt

R133	052-3921-0	R392_1/4W	RES,METAL FILM,1/4W,1%,392 OHM
R135	052-3921-0	R392_1/4W	RES,METAL FILM,1/4W,1%,392 OHM
R167	052-3921-0	R392_1/4W	RES,METAL FILM,1/4W,1%,392 OHM
R168	052-3921-0	R392_1/4W	RES,METAL FILM,1/4W,1%,392 OHM
R171	052-3921-0	R392_1/4W	RES,METAL FILM,1/4W,1%,392 OHM
R172	052-3921-0	R392_1/4W	RES,METAL FILM,1/4W,1%,392 OHM
R75	060-4702-0	R4.70K1/8W	RES,METAL FILM 1/8W,1%,4.70K OHM
R76	060-4702-0	R4.70K1/8W	RES,METAL FILM 1/8W,1%,4.70K OHM
R79	060-4702-0	R4.70K1/8W	RES,METAL FILM 1/8W,1%,4.70K OHM
R80	060-4702-0	R4.70K1/8W	RES,METAL FILM 1/8W,1%,4.70K OHM
R154	060-4702-0	R4.70K1/8W	RES,METAL FILM 1/8W,1%,4.70K OHM
R155	060-4702-0	R4.70K1/8W	RES,METAL FILM 1/8W,1%,4.70K OHM
R159	060-4702-0	R4.70K1/8W	RES,METAL FILM 1/8W,1%,4.70K OHM
R160	060-4702-0	R4.70K1/8W	RES,METAL FILM 1/8W,1%,4.70K OHM
R177	052-0470-0	R4.70_1/4W	RES,METAL FILM,4.70 OHM, 1/4W,1%
R183	052-0470-0	R4.70_1/4W	RES,METAL FILM,4.70 OHM, 1/4W,1%
R199	052-0470-0	R4.70_1/4W	RES,METAL FILM,4.70 OHM, 1/4W,1%
R201	052-0470-0	R4.70_1/4W	RES,METAL FILM,4.70 OHM, 1/4W,1%
R44	060-4123-0	R41.2K1/8W	RES,METAL FILM, 41.2K, 1% , 1/8W
R112	060-4123-0	R41.2K1/8W	RES,METAL FILM, 41.2K, 1% , 1/8W
R150	060-4703-0	R47.0K1/8W	RES,METAL FILM 1/8W,1%,47.0K
R153	060-4703-0	R47.0K1/8W	RES,METAL FILM 1/8W,1%,47.0K
R27	060-4750-0	R47.5_1/8W	RES, METAL FILM, 47.5 OHM, 1/8W, 1%
R97	060-4750-0	R47.5_1/8W	RES, METAL FILM, 47.5 OHM, 1/8W, 1%

Main parts.txt

R192	060-4750-0	R47.5_1/8W	RES, METAL FILM, 47.5 OHM, 1/8W, 1%
R194	060-4750-0	R47.5_1/8W	RES, METAL FILM, 47.5 OHM, 1/8W, 1%
R157	060-5602-0	R5.60K1/8W	RES, METAL FILM, 5.60K OHM, 1/8W, 1%
R162	060-5602-0	R5.60K1/8W	RES, METAL FILM, 5.60K OHM, 1/8W, 1%
R4	060-5620-0	R56.2_1/8W	RES, METAL FILM, 56.2 OHM, 1/8W, 1%
R5	060-5620-0	R56.2_1/8W	RES, METAL FILM, 56.2 OHM, 1/8W, 1%
R43	060-5604-0	R560.K1/8W	RES, METAL FILM, 560.K, 1% , 1/8W
R114	060-5604-0	R560.K1/8W	RES, METAL FILM, 560.K, 1% , 1/8W
R17	052-5601-0	R560._1/4W	RES, METAL FILM, 560 OHM, 1/4W, 1%
R24	052-5601-0	R560._1/4W	RES, METAL FILM, 560 OHM, 1/4W, 1%
R67	060-6802-0	R6.80K1/8W	RES, METAL FILM 1/8W, 1%, 6.80K
R71	060-6802-0	R6.80K1/8W	RES, METAL FILM 1/8W, 1%, 6.80K
R31	052-6812-0	R6.81K1/4W	RES, METAL FILM, 6.81K OHM, 1/4W, 1%
R37	052-6812-0	R6.81K1/4W	RES, METAL FILM, 6.81K OHM, 1/4W, 1%
R96	052-6812-0	R6.81K1/4W	RES, METAL FILM, 6.81K OHM, 1/4W, 1%
R103	052-6812-0	R6.81K1/4W	RES, METAL FILM, 6.81K OHM, 1/4W, 1%
R141	060-8252-0	R8.25K1/8W	RES, METAL FILM, 8.25K OHM, 1/8W, 1%
R182	060-8252-0	R8.25K1/8W	RES, METAL FILM, 8.25K OHM, 1/8W, 1%
R28	060-8253-0	R82.5K1/8W	RES, METAL FILM 1/8W, 1%, 82.5K OHM
R93	060-8253-0	R82.5K1/8W	RES, METAL FILM 1/8W, 1%, 82.5K OHM
R39	060-8201-0	R820._1/8W	RES, METAL FILM, 820 OHM, 1% , 1/8W
R106	060-8201-0	R820._1/8W	RES, METAL FILM, 820 OHM, 1% , 1/8W
J8	092-0008-1	RCA/DUAL	JACK, RCA, DUAL, RD/WT
J1	092-0007-1	RCA/QUADC	JACK, RCAX4, HORIZ, GOLD, RD/WT, CGND
J4	092-0007-1	RCA/QUADC	JACK, RCAX4, HORIZ, GOLD, RD/WT,

Main parts.txt

J5	092-0007-1	RCA/QUADC	CGND JACK, RCAX4, HORIZ, GOLD, RD/WT, CGND
K1	084-0005-0	RLY-HE700	RELAY, DPST, 12V, HAMLIN HE722A1200
K2	084-0005-0	RLY-HE700	RELAY, DPST, 12V, HAMLIN HE722A1200
K3	084-0005-0	RLY-HE700	RELAY, DPST, 12V, HAMLIN HE722A1200
K4	084-0005-0	RLY-HE700	RELAY, DPST, 12V, HAMLIN HE722A1200
K5	084-0005-0	RLY-HE700	RELAY, DPST, 12V, HAMLIN HE722A1200
K6	084-0005-0	RLY-HE700	RELAY, DPST, 12V, HAMLIN HE722A1200
K7	084-0005-0	RLY-HE700	RELAY, DPST, 12V, HAMLIN HE722A1200
K8	084-0005-0	RLY-HE700	RELAY, DPST, 12V, HAMLIN HE722A1200
K9	084-0005-0	RLY-HE700	RELAY, DPST, 12V, HAMLIN HE722A1200
K10	084-0005-0	RLY-HE700	RELAY, DPST, 12V, HAMLIN HE722A1200
K11	084-0005-0	RLY-HE700	RELAY, DPST, 12V, HAMLIN HE722A1200
K12	084-0005-0	RLY-HE700	RELAY, DPST, 12V, HAMLIN HE722A1200
K13	084-0005-0	RLY-HE700	RELAY, DPST, 12V, HAMLIN HE722A1200
K14	084-0005-0	RLY-HE700	RELAY, DPST, 12V, HAMLIN HE722A1200
K15	084-0005-0	RLY-HE700	RELAY, DPST, 12V, HAMLIN HE722A1200
K16	084-0005-0	RLY-HE700	RELAY, DPST, 12V, HAMLIN HE722A1200
U1	001-1141-0	SSM2141	SSM2141, DIFFERENTIAL LINE RECEIVER
U3	001-1141-0	SSM2141	SSM2141, DIFFERENTIAL LINE RECEIVER
S1	090-0006-0	SWT-DPDT-SLIDE 1	SWITCH, 2P2T, SLIDE, 30V, .3A, PCHOR, GOLD
U2	001-1030-1	TL072	TLO72CP, LOW NOISE JFET OPAMP
J10	092-0033-0	XLR-F	CON, XLR, F, PC MNT, NC3FAH
J13	092-0033-0	XLR-F	CON, XLR, F, PC MNT, NC3FAH

Bill Of Materials for HA6027Coutput.sch on Fri Jun 11 07:48:11 1999

PART NUMBER	Reference	Part Name	Description
020-1000-0	D1	1N4148	RECT-FAST, 200MA, 100V, 4NS, DO-35
020-1000-0	D2	1N4148	RECT-FAST, 200MA, 100V, 4NS, DO-35
010-1002-0	Q4	2SA1376	2SA1376, PNP, 180V, 100MA, TO-92
010-1002-0	Q12	2SA1376	2SA1376, PNP, 180V, 100MA, TO-92
012-1002-0	Q2	2SA1837	2SA1837, PNP, 200V, 1.5A, 2-10R1A
012-1002-0	Q9	2SA1837	2SA1837, PNP, 200V, 1.5A, 2-10R1A
010-0001-0	Q3	2SC3478	2SC3478, NPN, 180V, 100MA, TO-92
010-0001-0	Q8	2SC3478	2SC3478, NPN, 180V, 100MA, TO-92
012-0002-0	Q5	2SC4793	2SC4793, NPN, 200V, 1.5A, 2-10R1A
012-0002-0	Q13	2SC4793	2SC4793, NPN, 200V, 1.5A, 2-10R1A
030-2104-1	C75	C104C50V1	CAP CER AXIAL, 104, 20%, 50V, Z5U
035-2104-0	C82	C104P50V	CAP, POLYPROPYLENE, FILM/FOIL, 104, 5%, 50V
035-2104-0	C84	C104P50V	CAP, POLYPROPYLENE, FILM/FOIL, 104, 5%, 50V
030-2105-0	C1	C105C50V	CAP CER AXIAL, 105, 20%, 50V, Z5U
030-2105-0	C11	C105C50V	CAP CER AXIAL, 105, 20%, 50V, Z5U
030-2105-0	C12	C105C50V	CAP CER AXIAL, 105, 20%, 50V, Z5U
030-2105-0	C13	C105C50V	CAP CER AXIAL, 105, 20%, 50V, Z5U
030-2105-0	C19	C105C50V	CAP CER AXIAL, 105, 20%, 50V, Z5U
030-2105-0	C20	C105C50V	CAP CER AXIAL, 105, 20%, 50V, Z5U
030-2105-0	C21	C105C50V	CAP CER AXIAL, 105, 20%, 50V, Z5U
030-2105-0	C22	C105C50V	CAP CER AXIAL, 105, 20%, 50V, Z5U
030-2105-0	C31	C105C50V	CAP CER AXIAL, 105, 20%, 50V, Z5U
030-2105-0	C39	C105C50V	CAP CER AXIAL, 105, 20%, 50V, Z5U
030-2105-0	C42	C105C50V	CAP CER AXIAL, 105, 20%, 50V, Z5U
030-2105-0	C55	C105C50V	CAP CER AXIAL, 105, 20%, 50V, Z5U
030-2105-0	C56	C105C50V	CAP CER AXIAL, 105, 20%, 50V, Z5U
030-2105-0	C63	C105C50V	CAP CER AXIAL, 105, 20%, 50V, Z5U
030-2105-0	C65	C105C50V	CAP CER AXIAL, 105, 20%, 50V, Z5U
030-2105-0	C70	C105C50V	CAP CER AXIAL, 105, 20%, 50V, Z5U
030-2105-0	C72	C105C50V	CAP CER AXIAL, 105, 20%, 50V, Z5U
031-0107-0	C2	C107L16	CAP, ELEC, RAD, 107, -10%, +50%, 16V
031-0107-0	C3	C107L16	CAP, ELEC, RAD, 107, -10%, +50%, 16V
031-0107-0	C4	C107L16	CAP, ELEC, RAD, 107, -10%, +50%, 16V
031-0107-0	C5	C107L16	CAP, ELEC, RAD, 107, -10%, +50%, 16V

Output materials.txt

031-0107-0	C14	C107L16	CAP, ELEC, RAD, 107, -10%, +50%, 16V
031-0107-0	C15	C107L16	CAP, ELEC, RAD, 107, -10%, +50%, 16V
031-0107-0	C23	C107L16	CAP, ELEC, RAD, 107, -10%, +50%, 16V
031-0107-0	C24	C107L16	CAP, ELEC, RAD, 107, -10%, +50%, 16V
031-0107-0	C25	C107L16	CAP, ELEC, RAD, 107, -10%, +50%, 16V
031-0107-0	C32	C107L16	CAP, ELEC, RAD, 107, -10%, +50%, 16V
031-0107-0	C33	C107L16	CAP, ELEC, RAD, 107, -10%, +50%, 16V
031-0107-0	C34	C107L16	CAP, ELEC, RAD, 107, -10%, +50%, 16V
031-0107-0	C43	C107L16	CAP, ELEC, RAD, 107, -10%, +50%, 16V
031-0107-0	C44	C107L16	CAP, ELEC, RAD, 107, -10%, +50%, 16V
031-0107-0	C57	C107L16	CAP, ELEC, RAD, 107, -10%, +50%, 16V
031-0107-0	C66	C107L16	CAP, ELEC, RAD, 107, -10%, +50%, 16V
031-0107-0	C77	C107L16	CAP, ELEC, RAD, 107, -10%, +50%, 16V
031-0107-0	C78	C107L16	CAP, ELEC, RAD, 107, -10%, +50%, 16V
031-0107-0	C79	C107L16	CAP, ELEC, RAD, 107, -10%, +50%, 16V
031-0107-0	C80	C107L16	CAP, ELEC, RAD, 107, -10%, +50%, 16V
031-0107-0	C81	C107L16	CAP, ELEC, RAD, 107, -10%, +50%, 16V
031-0107-0	C83	C107L16	CAP, ELEC, RAD, 107, -10%, +50%, 16V
030-2221-0	C6	C221C50V	CAP CER AXIAL, 221, 10%, 50V, NPO
030-2221-0	C7	C221C50V	CAP CER AXIAL, 221, 10%, 50V, NPO
030-2221-0	C8	C221C50V	CAP CER AXIAL, 221, 10%, 50V, NPO
030-2221-0	C9	C221C50V	CAP CER AXIAL, 221, 10%, 50V, NPO
030-2221-0	C10	C221C50V	CAP CER AXIAL, 221, 10%, 50V, NPO
030-2221-0	C16	C221C50V	CAP CER AXIAL, 221, 10%, 50V, NPO
030-2221-0	C17	C221C50V	CAP CER AXIAL, 221, 10%, 50V, NPO
030-2221-0	C18	C221C50V	CAP CER AXIAL, 221, 10%, 50V, NPO
030-2221-0	C26	C221C50V	CAP CER AXIAL, 221, 10%, 50V, NPO
030-2221-0	C27	C221C50V	CAP CER AXIAL, 221, 10%, 50V, NPO

Output materials.txt

030-2221-0	C28	C221C50V	CAP CER AXIAL, 221, 10%, 50V, NPO
030-2221-0	C29	C221C50V	CAP CER AXIAL, 221, 10%, 50V, NPO
030-2221-0	C30	C221C50V	CAP CER AXIAL, 221, 10%, 50V, NPO
030-2221-0	C35	C221C50V	CAP CER AXIAL, 221, 10%, 50V, NPO
030-2221-0	C36	C221C50V	CAP CER AXIAL, 221, 10%, 50V, NPO
030-2221-0	C37	C221C50V	CAP CER AXIAL, 221, 10%, 50V, NPO
030-2221-0	C38	C221C50V	CAP CER AXIAL, 221, 10%, 50V, NPO
030-2221-0	C45	C221C50V	CAP CER AXIAL, 221, 10%, 50V, NPO
030-2221-0	C46	C221C50V	CAP CER AXIAL, 221, 10%, 50V, NPO
030-2221-0	C47	C221C50V	CAP CER AXIAL, 221, 10%, 50V, NPO
030-2221-0	C48	C221C50V	CAP CER AXIAL, 221, 10%, 50V, NPO
030-2221-0	C49	C221C50V	CAP CER AXIAL, 221, 10%, 50V, NPO
030-2221-0	C52	C221C50V	CAP CER AXIAL, 221, 10%, 50V, NPO
030-2221-0	C53	C221C50V	CAP CER AXIAL, 221, 10%, 50V, NPO
030-2221-0	C54	C221C50V	CAP CER AXIAL, 221, 10%, 50V, NPO
030-2221-0	C58	C221C50V	CAP CER AXIAL, 221, 10%, 50V, NPO
030-2221-0	C59	C221C50V	CAP CER AXIAL, 221, 10%, 50V, NPO
030-2221-0	C60	C221C50V	CAP CER AXIAL, 221, 10%, 50V, NPO
030-2221-0	C61	C221C50V	CAP CER AXIAL, 221, 10%, 50V, NPO
030-2221-0	C67	C221C50V	CAP CER AXIAL, 221, 10%, 50V, NPO
030-2221-0	C68	C221C50V	CAP CER AXIAL, 221, 10%, 50V, NPO
030-2221-0	C73	C221C50V	CAP CER AXIAL, 221, 10%, 50V, NPO
030-2221-0	C74	C221C50V	CAP CER AXIAL, 221, 10%, 50V, NPO
030-2221-0	C76	C221C50V	CAP CER AXIAL, 221, 10%, 50V, NPO
031-0477-0	C40	C477L10	CAP, ELEC, RAD, 477, 20%, 10V
031-0477-0	C41	C477L10	CAP, ELEC, RAD, 477, 20%, 10V
031-0477-0	C50	C477L10	CAP, ELEC, RAD, 477, 20%, 10V
031-0477-0	C51	C477L10	CAP, ELEC, RAD, 477, 20%, 10V
031-1477-0	C62	C477L25	CAP, ELEC, RAD, 477, 25V
031-1477-0	C64	C477L25	CAP, ELEC, RAD, 477, 25V
031-1477-0	C69	C477L25	CAP, ELEC, RAD, 477, 25V
031-1477-0	C71	C477L25	CAP, ELEC, RAD, 477, 25V
092-0021-0	J15	CON/3.5MMSB	JACK, PHONE, 3.5 MM, MONO SB
092-0021-0	J17	CON/3.5MMSB	JACK, PHONE, 3.5 MM, MONO SB
092-0021-0	J18	CON/3.5MMSB	JACK, PHONE, 3.5 MM, MONO SB
003-0004-0	U3	CS3310	CS3310, STEREO DIGITAL VOLUME CONTROL
003-0004-0	U5	CS3310	CS3310, STEREO DIGITAL VOLUME CONTROL
003-0004-0	U6	CS3310	CS3310, STEREO DIGITAL VOLUME CONTROL
020-0016-0	Z3	DIODE-HZ16-2L	ZENER DIODE, HZ16L2
020-0016-0	Z4	DIODE-HZ16-2L	ZENER DIODE, HZ16L2
020-0006-0	Z5	DIODE-HZ6-B2L	ZENER DIODE, HZ6L2
020-0008-0	Z1	DIODE-HZ7-A1L	ZENER DIODE, HZ7A1L
020-0008-0	Z2	DIODE HZ7 A1L	ZENER DIODE, HZ7A1L

Output materials.txt

093-0062-0	J9	HDR-1X3VM	HDR, .1X3, VERT, MALE, LOCK
093-0062-0	J10	HDR-1X3VM	HDR, .1X3, VERT, MALE, LOCK
093-0051-0	J11	HDR2MMX2VM	HDR, 2MMX2, VERT, MALE, LOCK
093-0051-0	J19	HDR2MMX2VM	HDR, 2MMX2, VERT, MALE, LOCK
093-0051-0	J20	HDR2MMX2VM	HDR, 2MMX2, VERT, MALE, LOCK
093-0051-0	J22	HDR2MMX2VM	HDR, 2MMX2, VERT, MALE, LOCK
093-0043-0	J2	HDR2MMX3V	HDR, 2MMX3, VERT, MALE, LOCK, GOLD
093-0151-0	J3	HDR2MMX5VM	HDR, 2MMX5, VERT, MALE, LOCKING
093-0151-0	J21	HDR2MMX5VM	HDR, 2MMX5, VERT, MALE, LOCKING
093-0024-0	J16	HDR2MMX6VM	HDR, 2MMX6, VERT, MALE
081-0010-0	L1	L33UH	INDUCTOR, AX, HIQ, 33UH
081-0010-0	L2	L33UH	INDUCTOR, AX, HIQ, 33UH
000-0000-0	X1	MH.125/220	.125 HOLE, .220 PAD
000-0000-0	X2	MH.125/220	.125 HOLE, .220 PAD
000-0000-0	X3	MH.125/220	.125 HOLE, .220 PAD
010-0012-0	Q16	MPSA06	MPSA06, NPN, 80V, 500MA, TO-92
010 1013 0	Q15	MPSA5G	MPSA5G PNP 80V 500MA TO-92
	R35	R.430_1W-1	RES, WIRE WOUND, 430 OHM, 1W, 5%
	R40	R.430_1W-1	RES, WIRE WOUND, 430 OHM, 1W, 5%
052-0000-0	R47	R0_1/4W	RES, METAL WIRE, 1/4W, 1%
060-1002-0	R9	R1.00K1/8W	RES, METAL FILM, 1.00K, 1/8W, 1%
060-1002-0	R10	R1.00K1/8W	RES, METAL FILM, 1.00K, 1/8W, 1%
060-1002-0	R11	R1.00K1/8W	RES, METAL FILM, 1.00K, 1/8W, 1%
060-1002-0	R16	R1.00K1/8W	RES, METAL FILM, 1.00K, 1/8W, 1%
060-1002-0	R17	R1.00K1/8W	RES, METAL FILM, 1.00K, 1/8W, 1%
060-1002-0	R18	R1.00K1/8W	RES, METAL FILM, 1.00K, 1/8W, 1%
060-1002-0	R19	R1.00K1/8W	RES, METAL FILM, 1.00K, 1/8W, 1%
060-1002-0	R23	R1.00K1/8W	RES, METAL FILM, 1.00K, 1/8W, 1%
060-1002-0	R36	R1.00K1/8W	RES, METAL FILM, 1.00K, 1/8W, 1%
060-1002-0	R39	R1.00K1/8W	RES, METAL FILM, 1.00K, 1/8W, 1%
060-1002-0	R49	R1.00K1/8W	RES, METAL FILM, 1.00K, 1/8W, 1%
060-1002-0	R54	R1.00K1/8W	RES, METAL FILM, 1.00K, 1/8W,

Output materials.txt

			1%
060-1002-0	R58	R1.00K1/8W	RES,METAL FILM, 1.00K, 1/8W, 1%
053-1002-0	R56	R1.0K1/2W	RES ,CARBON FILM,1/2W,5%
060-1003-0	R57	R10.0K1/8W	RES,METAL FILM 1/8W,1%
060-1003-0	R60	R10.0K1/8W	RES,METAL FILM 1/8W,1%
060-1003-0	R63	R10.0K1/8W	RES,METAL FILM 1/8W,1%
060-1003-0	R65	R10.0K1/8W	RES,METAL FILM 1/8W,1%
060-1003-0	R66	R10.0K1/8W	RES,METAL FILM 1/8W,1%
060-1003-0	R67	R10.0K1/8W	RES,METAL FILM 1/8W,1%
060-1000-0	R26	R10.0_1/8W	RES,METAL FILM 1/8W,1%
060-1000-0	R43	R10.0_1/8W	RES,METAL FILM 1/8W,1%
052-1001-0	R50	R100._1/4W	RES,METAL FILM,100 OHM,1/4W, 1%
052-1001-0	R55	R100._1/4W	RES,METAL FILM,100 OHM,1/4W, 1%
050-1003-0	R61	R10K1/8W	RES,CARBON FILM, 10K OHM, 1/8W, 5%
060-1214-0	R1	R121.K1/8W	RES, METAL FILM, 121K OHM, 1/8W, 1%
060-1214-0	R2	R121.K1/8W	RES, METAL FILM, 121K OHM, 1/8W, 1%
060-1214-0	R3	R121.K1/8W	RES, METAL FILM, 121K OHM, 1/8W, 1%
060-1214-0	R4	R121.K1/8W	RES, METAL FILM, 121K OHM, 1/8W, 1%
060-1214-0	R5	R121.K1/8W	RES, METAL FILM, 121K OHM, 1/8W, 1%
060-1214-0	R6	R121.K1/8W	RES, METAL FILM, 121K OHM, 1/8W, 1%
060-1214-0	R7	R121.K1/8W	RES, METAL FILM, 121K OHM, 1/8W, 1%
060-1214-0	R8	R121.K1/8W	RES, METAL FILM, 121K OHM, 1/8W, 1%
060-1214-0	R12	R121.K1/8W	RES, METAL FILM, 121K OHM, 1/8W, 1%
060-1214-0	R13	R121.K1/8W	RES, METAL FILM, 121K OHM, 1/8W, 1%
060-1214-0	R14	R121.K1/8W	RES, METAL FILM, 121K OHM, 1/8W, 1%
060-1214-0	R15	R121.K1/8W	RES, METAL FILM, 121K OHM, 1/8W, 1%
060-1214-0	R41	R121.K1/8W	RES, METAL FILM, 121K OHM, 1/8W, 1%
060-1214-0	R42	R121.K1/8W	RES, METAL FILM, 121K OHM, 1/8W, 1%

Output materials.txt

060-1214-0	R45	R121.K1/8W	RES, METAL FILM, 121K OHM, 1/8W, 1%
060-1214-0	R46	R121.K1/8W	RES, METAL FILM, 121K OHM, 1/8W, 1%
060-1214-0	R51	R121.K1/8W	RES, METAL FILM, 121K OHM, 1/8W, 1%
060-1214-0	R52	R121.K1/8W	RES, METAL FILM, 121K OHM, 1/8W, 1%
053-1501-0	R59	R150_1/2W	RES ,CARBON FILM,150 OHM, 1/2W,5%
050-1501-0	R68	R150_1/8W	RES,CARBON FILM, 150 OHM, 1/8W, 5%
050-1501-0	R69	R150_1/8W	RES,CARBON FILM, 150 OHM, 1/8W, 5%
050-1501-0	R70	R150_1/8W	RES,CARBON FILM, 150 OHM, 1/8W, 5%
050-1501-0	R71	R150_1/8W	RES,CARBON FILM, 150 OHM, 1/8W, 5%
060-2203-0	R24	R22.0K1/8W	RES,METAL FILM,22K OHM, 1/8W, 1%
060-2203-0	R25	R22.0K1/8W	RES,METAL FILM,22K OHM, 1/8W, 1%
060-2203-0	R30	R22.0K1/8W	RES,METAL FILM,22K OHM, 1/8W, 1%
060-2203-0	R31	R22.0K1/8W	RES,METAL FILM,22K OHM, 1/8W, 1%
060-2203-0	R32	R22.0K1/8W	RES,METAL FILM,22K OHM, 1/8W, 1%
060-2203-0	R33	R22.0K1/8W	RES,METAL FILM,22K OHM, 1/8W, 1%
060-2203-0	R34	R22.0K1/8W	RES,METAL FILM,22K OHM, 1/8W, 1%
060-2203-0	R44	R22.0K1/8W	RES,METAL FILM,22K OHM, 1/8W, 1%
060-2203-0	R48	R22.0K1/8W	RES,METAL FILM,22K OHM, 1/8W, 1%
060-2203-0	R53	R22.0K1/8W	RES,METAL FILM,22K OHM, 1/8W, 1%
060-2203-0	R62	R22.0K1/8W	RES,METAL FILM,22K OHM, 1/8W, 1%
060-2203-0	R64	R22.0K1/8W	RES,METAL FILM,22K OHM, 1/8W, 1%
060-2741-0	R20	R274._1/8W	RES, METAL FILM, 274 OHM, 1/8W, 1%
060-2741-0	R21	R274._1/8W	RES, METAL FILM, 274 OHM, 1/8W, 1%

Output materials.txt

060-2741-0	R22	R274._1/8W	RES, METAL FILM, 274 OHM, 1/8W, 1%
060-2741-0	R27	R274._1/8W	RES, METAL FILM, 274 OHM, 1/8W, 1%
060-2741-0	R28	R274._1/8W	RES, METAL FILM, 274 OHM, 1/8W, 1%
060-2741-0	R29	R274._1/8W	RES, METAL FILM, 274 OHM, 1/8W, 1%
060-4703-0	R37	R47.0K1/8W	RES, METAL FILM 1/8W, 1%
060-4703-0	R38	R47.0K1/8W	RES, METAL FILM 1/8W, 1%
092-0008-1	J13	RCA/DUAL	JACK, RCA, DUAL, RD/WT
092-0007-1	J1	RCA/QUADC	JACK, RCAX4, HORIZ, GOLD, RD/WT, CGND
092-0007-1	J4	RCA/QUADC	JACK, RCAX4, HORIZ, GOLD, RD/WT, CGND
092-0007-1	J5	RCA/QUADC	JACK, RCAX4, HORIZ, GOLD, RD/WT, CGND
092-0007-1	J7	RCA/QUADC	JACK, RCAX4, HORIZ, GOLD, RD/WT, CGND
092-0007-1	J8	RCA/QUADC	JACK, RCAX4, HORIZ, GOLD, RD/WT, CGND
084-0005-0	K1	RLY-HE700	RELAY, DPST, 12V, HAMLIN HE722A1200
084-0005-0	K2	RLY-HE700	RELAY, DPST, 12V, HAMLIN HE722A1200
084-0005-0	K3	RLY-HE700	RELAY, DPST, 12V, HAMLIN HE722A1200
001-1142-0	U7	SSM2142	SSM2142, BALANCED LINE DRIVER
001-1142-0	U8	SSM2142	SSM2142, BALANCED LINE DRIVER
091-1004-0	T1	THER-POLYSW	POLY SWITCH, .2A
	X4	THERMALVIA	
001-1030-1	U1	TL072	TLO72CP, LOW NOISE JFET OPAMP
001-1030-1	U2	TL072	TLO72CP, LOW NOISE JFET OPAMP
001-1030-1	U4	TL072	TLO72CP, LOW NOISE JFET OPAMP
092-0034-0	J12	XLR-M	CON, XLR, M, PC MNT, NC3MAH
092-0034-0	J14	XLR-M	CON, XLR, M, PC MNT, NC3MAH

Bill Of Materials for HA6021Cswitch.sch on Fri Jun 11 07:49:01 1999

PART NUMBER	Reference	Part Name	Description
014-0004-0	U2	78M05A	78M05FA, +5V REG, TO-220
	U1	78M12A	78M12FA, +12V REG, TO-220
023-0002-0	D1	BR1.5A/HOR	BRIDGE, 1.5A , HOR, PC
023-0002-0	D2	BR1.5A/HOR	BRIDGE, 1.5A , HOR, PC
034-7103-0	C1	C103C250V	CAP, CERMIC DISK, 103, 10%, X-250V
034-7103-0	C2	C103C250V	CAP, CERMIC DISK, 103, 10%, X-250V
030-4104-0	C14	C104C100V	CAP CER AXIAL, 104, 10%, 100V, X7R
030-4104-0	C15	C104C100V	CAP CER AXIAL, 104, 10%, 100V, X7R
030-2104-1	C5	C104C50V1	CAP CER AXIAL, 104, 20%, 50V, Z5U
030-2104-1	C11	C104C50V1	CAP CER AXIAL, 104, 20%, 50V, Z5U
030-2104-1	C13	C104C50V1	CAP CER AXIAL, 104, 20%, 50V, Z5U
030-2104-1	C16	C104C50V1	CAP CER AXIAL, 104, 20%, 50V, Z5U
030-2104-1	C17	C104C50V1	CAP CER AXIAL, 104, 20%, 50V, Z5U
030-2104-1	C18	C104C50V1	CAP CER AXIAL, 104, 20%, 50V, Z5U
030-2104-1	C19	C104C50V1	CAP CER AXIAL, 104, 20%, 50V, Z5U
030-2104-1	C20	C104C50V1	CAP CER AXIAL, 104, 20%, 50V, Z5U
030-2104-1	C21	C104C50V1	CAP CER AXIAL, 104, 20%, 50V, Z5U
030-2105-0	C3	C105C50V	CAP CER AXIAL, 105, 20%, 50V, Z5U
030-2105-0	C7	C105C50V	CAP CER AXIAL, 105, 20%, 50V, Z5U
030-2105-0	C9	C105C50V	CAP CER AXIAL, 105, 20%, 50V, Z5U
031-2338-0	C4	C338L35	CAP, ELEC, RAD, 338, 20%, 35V
031-2338-0	C10	C338L35	CAP, ELEC, RAD, 338, 20%, 35V
031-2338-0	C12	C338L35	CAP, ELEC, RAD, 338, 20%, 35V
031-0477-0	C8	C477L10	CAP, ELEC, RAD, 477, 20%, 10V
031-1477-0	C6	C477L25	CAP, ELEC, RAD, 477, 25V
094-0004-0	F1	FUSE5MM	FUSE CLIP, 5MM, P.C. MOUNT
X2			
093-0062-0	J9	HDR-1X3VM	HDR, .1X3, VERT, MALE, LOCK
093-0062-0	J11	HDR-1X3VM	HDR, .1X3, VERT, MALE, LOCK
093-0025-0	J10	HDR.1X2	HDR, .1X2, VERT, MALE, LOCK, GOLD
093-2005-0	J8	HDR2MMX7	HDR, 2MMX7, VERT, SHROUDED
000-0000-0	X1	MH.125/220	.125 HOLE, .220 PAD
000-0000-0	X2	MH.125/220	.125 HOLE, .220 PAD
000-0000-0	X3	MH.125/220	.125 HOLE, .220 PAD
000-0000-0	X4	MH.125/220	.125 HOLE, .220 PAD
084-0001-0	K1	RLY-793P-1A-S	RELAY SPNO 12VDC, 20A/125VAC, TV-10, PCB MT
090-0007-0	S1	SW-SPST-PB250V	SWITCH, 8A/128A, 250V, PP,

Switch materials.txt

		5A	PCB
092-0024-0	J7	TAB/187	FASTON, M, PC, .187"
092-0066-0	J2	TAB/250	FASTON, M, PC, .250"
092-0066-0	J3	TAB/250	FASTON, M, PC, .250"
092-0066-0	J4	TAB/250	FASTON, M, PC, .250"
092-0066-0	J5	TAB/250	FASTON, M, PC, .250"
092-0066-0	J6	TAB/250	FASTON, M, PC, .250"
080-0054-A	T1	XFR-ANA-230V	XFORMER, SIG 1.0, ANALOG, 230V:52VCT@0.54A
080-0055-A	T2	XFR-STB-230V	XFORMER, SIG 1.0, STANDBY, 230V:11.4V@0.9A

Bill Of Materials for HA6023Cvolume.sch on Fri Jun 11 07:49:47 1999

PART NUMBER	Reference	Part Name	Description
030-2105-0	C22	C105C50V	CAP CER AXIAL, 105, 20%, 50V, Z5U
031-0107-1	C23	C107L16NP	CAP, ELEC, RAD, 107, 20%, 16V, NP
093-0051-0	J14	HDR-2MMX2V	HDR, 2MMX2, VERT, MALE, LOCK
093-0051-0	J15	HDR-2MMX2V	HDR, 2MMX2, VERT, MALE, LOCK
093-0051-0	J16	HDR-2MMX2V	HDR, 2MMX2, VERT, MALE, LOCK
093-0051-0	J17	HDR-2MMX2V	HDR, 2MMX2, VERT, MALE, LOCK
093-0051-0	J12	HDR2MMX2VM	HDR, 2MMX2, VERT, MALE, LOCK
093-0094-0	J13	HDR2MMX7VM	HDR, 2MMX7, VERT, MALE
070-2003-0	R1	POT-20K-QD-MOT	POT, 20K, QUAD, MOTORIZED