

Admiral

MODEL	COLOR	CHASSIS
242	Maroon	5B4
244	White & Pink	
245	Red & White	
248	Green & White	
275	Red & White	5D4
278	Green & White	
279	Gray & White	

SERVICING

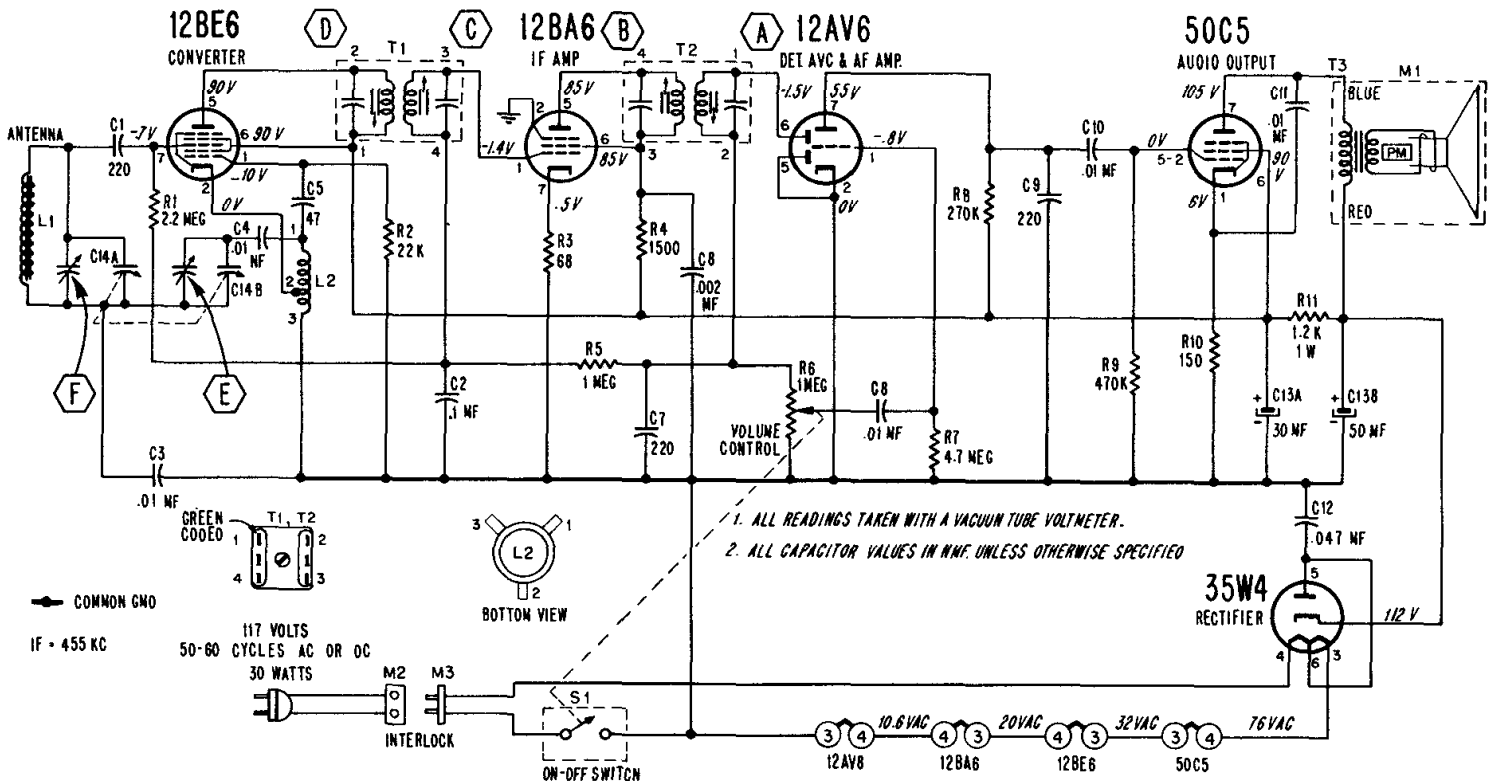
Figure 2, refers to the foil side of the printed circuit board. It shows alignment points, tube locations, and location of the common ground line.

Figures 3 and 4, refer to the 5B4 and 5D4 chassis respectively.

Figures 3 and 4 show the location of all resistors, capacitors, coils and transformers.

To further simplify parts identification and location, schematic symbol numbers are printed adjacent to respective components on the printed circuit board.

5B4



5D4

