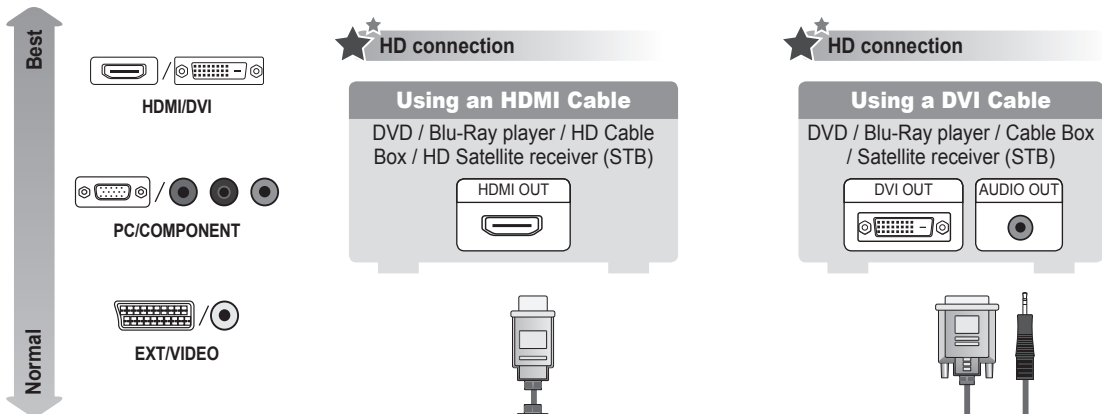


Connecting a AV device



★ HD connection

Using an HDMI Cable

DVD / Blu-Ray player / HD Cable Box / HD Satellite receiver (STB)

HDMI OUT

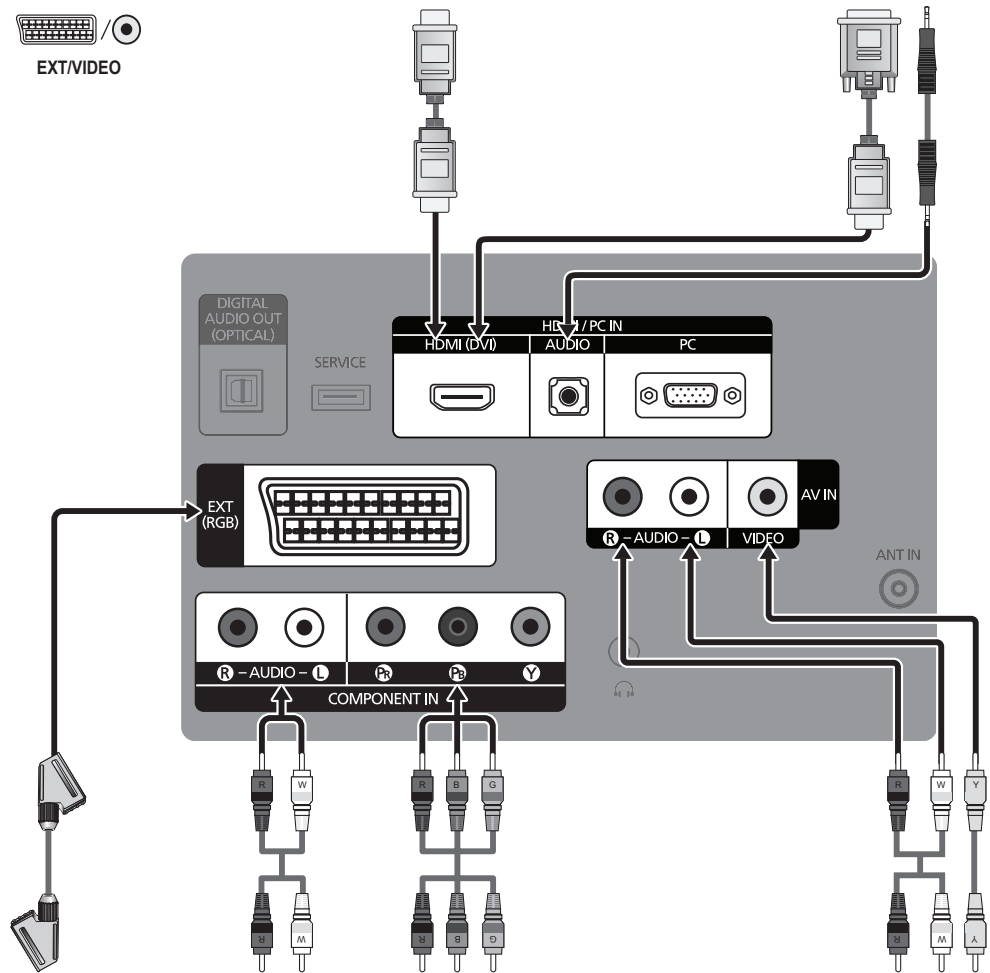
★ HD connection

Using a DVI Cable

DVD / Blu-Ray player / Cable Box / Satellite receiver (STB)

DVI OUT

AUDIO OUT



Component connection

Using a Scart Cable

VCR / DVD

EXT

Using a Component Cable

DVD / Blu-Ray player / Cable Box / Satellite receiver

AUDIO OUT

COMPONENT OUT

Audio/Video connection

Using an Audio/Video Cable

VCR

VIDEO OUT

AUDIO OUT

SERIES
4

SERIES
5

LCD TV

QUICK SETUP GUIDE

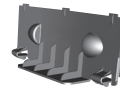
The Supplied Accessories



Remote Control & Batteries (AAA x 2)



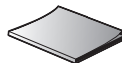
Power Cord



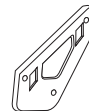
Cover-Bottom
(22 inch model only)



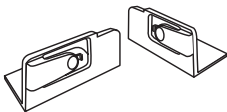
Cleaning Cloth



User Manual



Wall Mount kit
(19 inch model only)

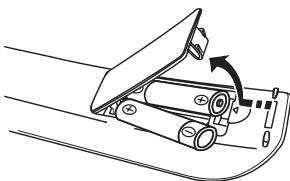


Decoration Cover
(19 inch model only)



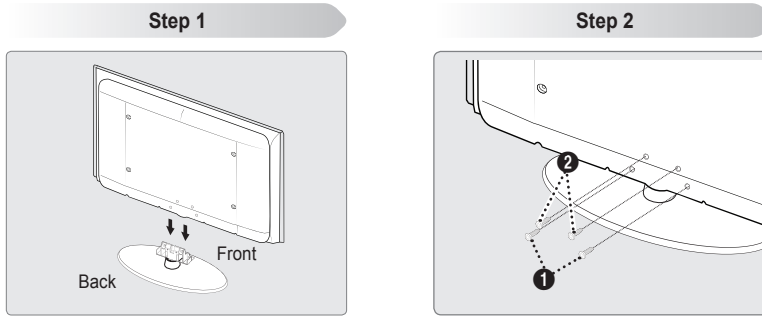
(M4 X L16)
Stand Screw X 4
(22 inch model only)

Installing Batteries in the Remote Control



BN68-02365C-00

Installing the Stand



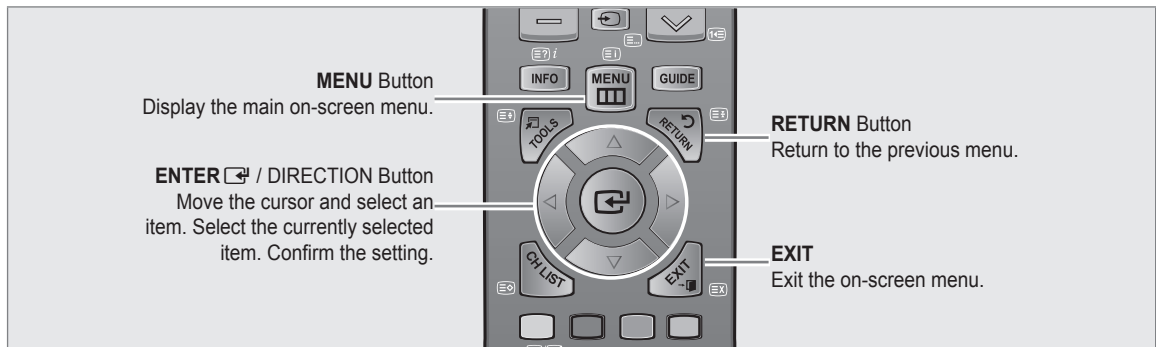
Step 1. Attach your LCD TV to the stand.

- ☑ Two or more people should carry the TV.
- ☑ Make sure to distinguish between the front and back of the stand when assembling them.
- ☑ To make sure the TV is installed on the stand at a proper level, do not apply excess downward pressure to the upper left of right sides of the TV.

Step 2. Fasten two screws at position ① and then fasten two screw at position ②.

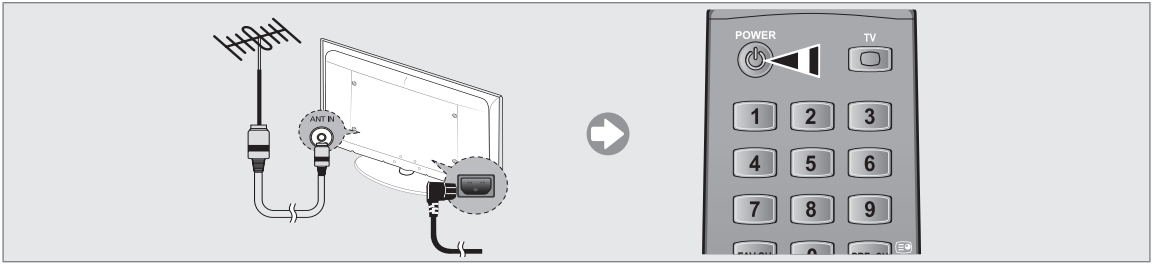
- ☑ Stand the product up and fasten the screws. If you fasten the screws with the LCD TV placed down, it may lean to one side.

Using the remote control buttons



Plug & Play

When the TV is initially powered on, basic settings proceed automatically and subsequently. If you want to reset this feature, press the **MENU** button to display menu. You can set the Plug & Play by selecting **Setup** → **Plug & Play**.



On the screen, you can set as follows.

☑ The each step may vary depending on the Antenna source.

