

Zenith Radio Corp.

Model: 4K400D

Chassis:

Year: Pre 1945

Power:

Circuit:

IF:

Tubes:

Bands:

Resources

Riders Volume 14 - ZENITH 14-1

Riders Volume 14 - ZENITH 14-2

ZENITH RADIO CORP.

MODELS 4K40CD, 4K40OL,
4K40OM, 4K40OS
Chassis 5416

NOTE:
All measurements with 1000 ohms per voltmeter — loop antenna not connected — volume at minimum — All readings made with fresh Zenith (part No. Z-59) battery pack with speaker in circuit.

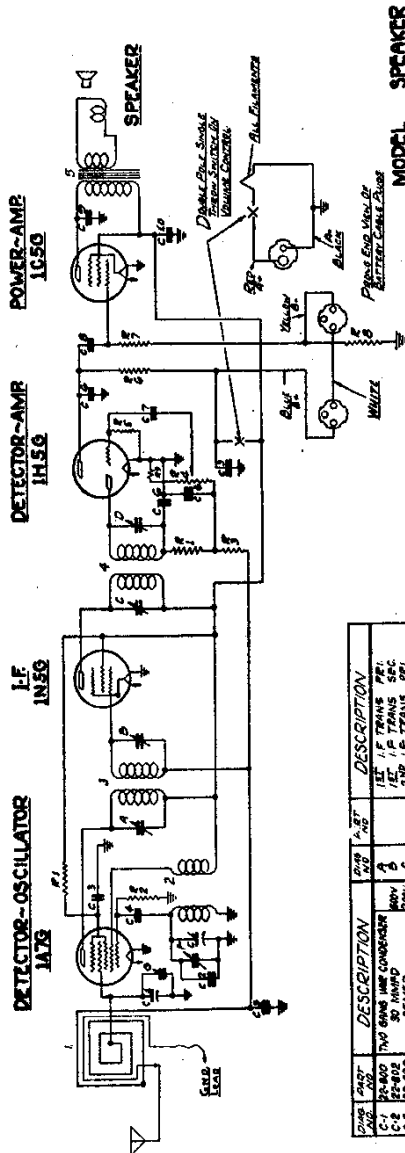
NOTE: "A"

Bias for IC5 measured across 1000 ohm resistor at points marked X—X.

Bias is neg. 10 volts.

LEGEND

- F -- FILAMENT
- P -- PLATE
- S -- SCREEN
- G -- GRID
- D -- DIODE
- NC -- NO CONNECTION



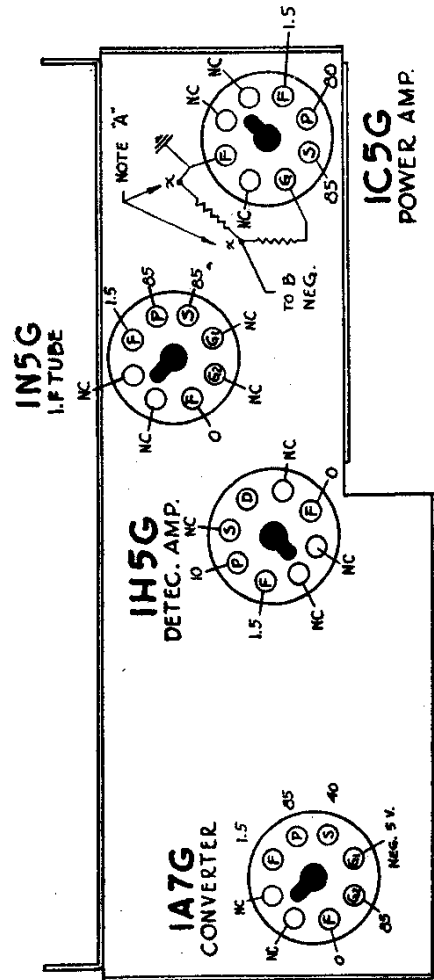
MODEL
4K-400 D
4K-400 L
4K-400 S

SPEAKER
49-294
49-294
49-294

I.F. FREQUENCY 455 K.C.
4 TUBE BATTERY SUPERHETERODYNE
CHASSIS NO. 5416

ZENITH RADIO CORPORATION
CHICAGO, ILLINOIS

COMPONENT	DESCRIPTION	QTY	VAL.	DESCRIPTION
1A7G	5Y5 GENE LINE CONVERTER	1	1/2	1/2" TRANS SEC
1H5G	6X4	1	1/2	1/2" TRANS SEC
1C5G	6X4	1	1/2	1/2" TRANS SEC
IC5G	6X4	1	1/2	1/2" TRANS SEC
RESISTORS				ANTENNA BRUSH (ON GRID)
COILS				1000 OHM RESISTOR
CONDENSERS				OSCILLATOR COIL ASSM
TRANSFORMERS				1/2" LF TRANSFORMER
OTHER				1/2" LF TRANSFORMER

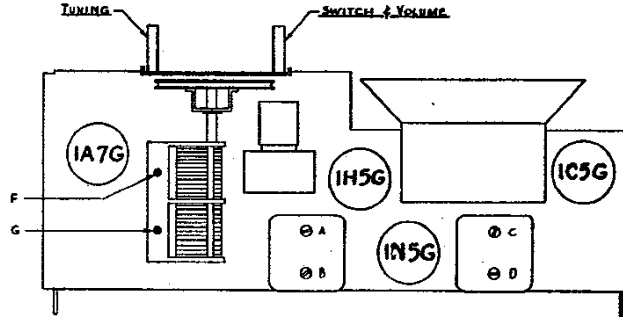


FRONT OF CHASSIS

MODELS 4K400D, 4K400L,
4K400M, 4K400S
Chassis 5416

ZENITH RADIO CORP.

MODELS 4K400D, 4K400S, 4K400L, 4K400M
Chassis 5416



ALIGNMENT PROCEDURE

Operation	Connect Test Oscillator to	Dummy Antenna	Set Test Osc. to	Band	Set Dial At	Adjust Trimmers	Purpose
1	1st Def. Grid	1/2 Mfd.	455	Br'dc't	600	ABC	I. F. Alignment
2	Separate 3 foot antenna		1500	"	1500	F	Set Osc. to Scale
3	Separate 3 foot antenna		1500	"	1500	G	Alignm't of Ant.

PARTS LIST

Chassis 5416

MODELS 4K400D, 4K400S, 4K400L, 4K400M

Dial Assembly

26-220	Dial scale	\$.20
59-75	Dial pointer	.10
76-278	Dial drive shaft	.10
80-69	Dial cord tension spring	.02
93-371	Dial spacer bakelite washer	.25
192-38	Dial crystal	.15
MS-418	Pulley and bracket assembly	.10
S-6870	Indicator disc and bushing	.15
S-6893	Dial cord and eyelet assembly	.15

Coils

95-593	1st I. F. Transformer	1.00
95-594	2nd I. F. Transformer	1.00
S-6869	Oscillator coil assembly	.60
S-6888	Loop antenna assembly	1.35

Condensers

22-162	.0001 mfd. ... 600 volt	.15
22-162	.00025 mfd. ... 600 volt	.15
22-243	.01 mfd. ... 400 volt	.15
22-448	.004 mfd. ... 600 volt	.18
22-684	8. mfd. ... 150 volt Dry Electrolytic	.45
22-800	Two gang variable	2.00
22-802	30 mmfd. ... 600 volt	1.00
22-826	.01 mfd. ... 200 volt	.12

22-828	.05 mfd. 400 volt	.15
22-829	.05 mfd. 200 volt	.12

Resistors

63-238	1000 ohm 1/4 watt	.07
63-271	1 megohm 1/4 watt	.07
63-593	47 M ohm ... 1/4 watt	.07
63-600	2.2 megohm ... 1/4 watt	.07
63-604	10 megohm ... 1/4 watt	.07
63-654	180 M ohm ... 1/4 watt	.07
63-669	3.9 megohm ... 1/4 watt	.07
63-1026	Volume control and switch	1.50

Miscellaneous

46-273	Tuning control knob	.10
49-294	Speaker—5 1/2" PM—all models	6.25
	208-294 cone and voice coil	1.50
	206-294 output transformer	1.25
78-208	Speaker plug socket	.10
78-246	Socket 1A7G tube	.10
78-247	Socket 1N5G tube	.10
78-248	Socket 1H5G tube	.10
78-249	Socket 1C5G tube	.10
83-658	Pin jack terminal strip	.06
126-297	Tube shield	.10
S-6872	Battery cable and plugs	.45

ALL PRICES LIST SUBJECT TO REGULAR PARTS DISCOUNT
AND CHANGE WITHOUT NOTICE

APRIL 4, 1939