

Zenith Radio Corp.

Model: 5F134

Chassis:

Year: Pre October 1937

Power:

Circuit:

IF:

Tubes:

Bands:

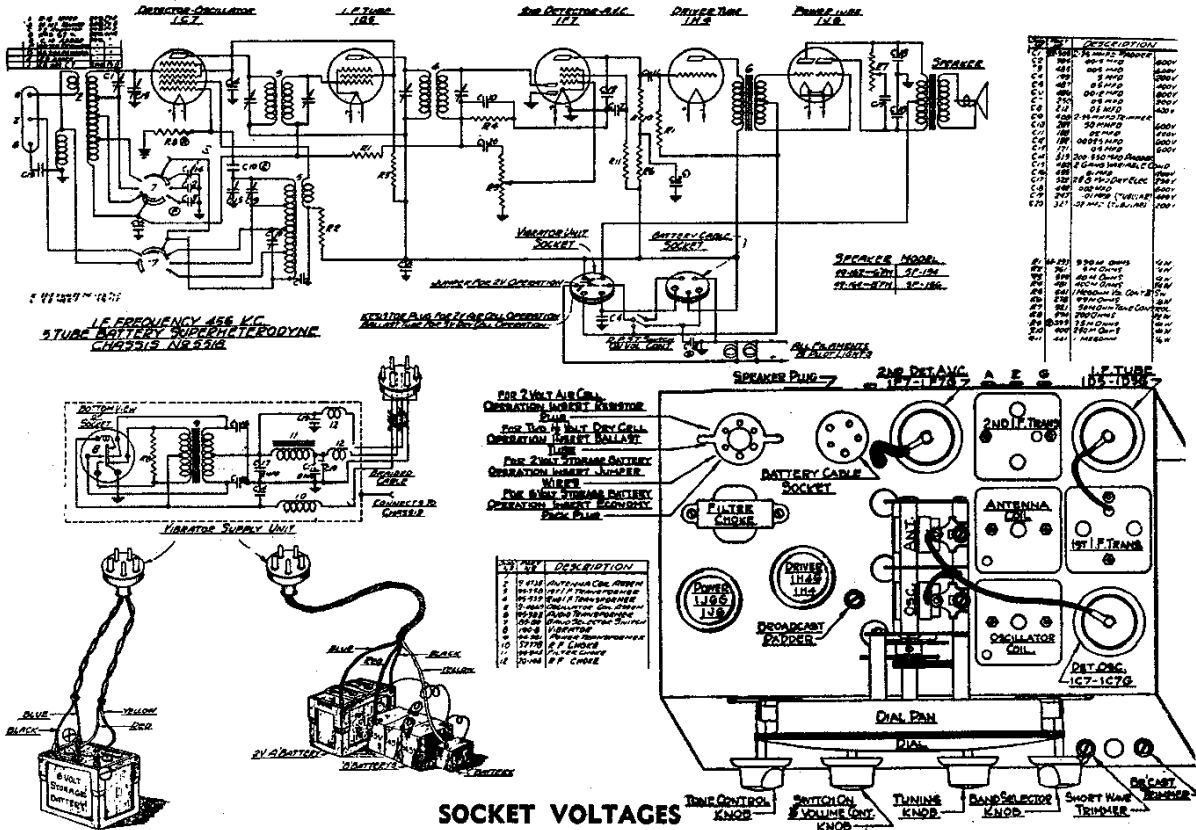
Resources

Riders Volume 8 - ZENITH 8-4

MODELS 5F134, 5F166

Chassis 5518
Schematic, Voltage
Socket, Trimmers
Alignment, Parts
Battery Conn.

ZENITH RADIO CORP.



Tube	Position	1	2	3	4	5	6	7	8	9
1C7	1st Det. Osc.	0	2	130	53	0	115	0	0	0
1D5	I.F.	0	2	130	53	—	—	0	0	0
1F7	2nd Det. A.V.C.	0	2	24	0	0	15	0	0	0
1H4	Driver	0	2	120	—	0	—	0	0	—
1J6	Power	0	2	143	—1	—1	143	0	0	—

All voltages measured with a 1000 ohm per volt D.C. meter and using the Zenith 6 V Economy Pack—Antenna and ground disconnected.

Battery Voltage—6.3 V.
Battery Drain—1.1 ampere

ALIGNMENT PROCEDURE

Connect the output leads of the signal generator to grid of the first detector and receiver chassis. Also connect an output meter across the speaker transformer leads.

Set the signal generator at 456 K.C. and carefully adjust the four I.F. trimmers to the point giving the highest reading on the output meter. The I. F. transformers are of a very high gain, selective type, and these adjustments should be repeated several times in order to secure maximum accuracy.

All adjustments should be made using as weak an output from the signal generator as possible in order to prevent the A.V.C. action from affecting the output readings.

Change the signal generator leads to the antenna and ground terminals of the receiver.

Set signal generator at 5 M.C. Switch receiver to band B and adjust osc. trimmer on gang for correct dial reading.

Set signal generator at 1400 K.C. Switch receiver to band A and adjust broadcast trimmer (located at front of chassis—see diagram below) for correct dial reading. Also adjust antenna trimmer on gang to resonance.

Set signal generator at 18 M.C.—Switch receiver to band C and adjust the short wave trimmer while rocking the pointer past 18 M.C. on the dial to the combination giving the greatest output.

Set signal generator at 600 K.C.—Switch receiver to band A and rock pointer past 600 on dial while adjusting the broadcast padder (located adjacent to gang condenser) to combination giving the greatest output reading.

Readjust broadcast and ant trimmers at 1400 K.C. (Same as No. 5).