

## Zenith Radio Corp.

**Model:** 5D627

**Chassis:**

**Year:** Pre March 1942

**Power:**

**Circuit:**

**IF:**

**Tubes:**

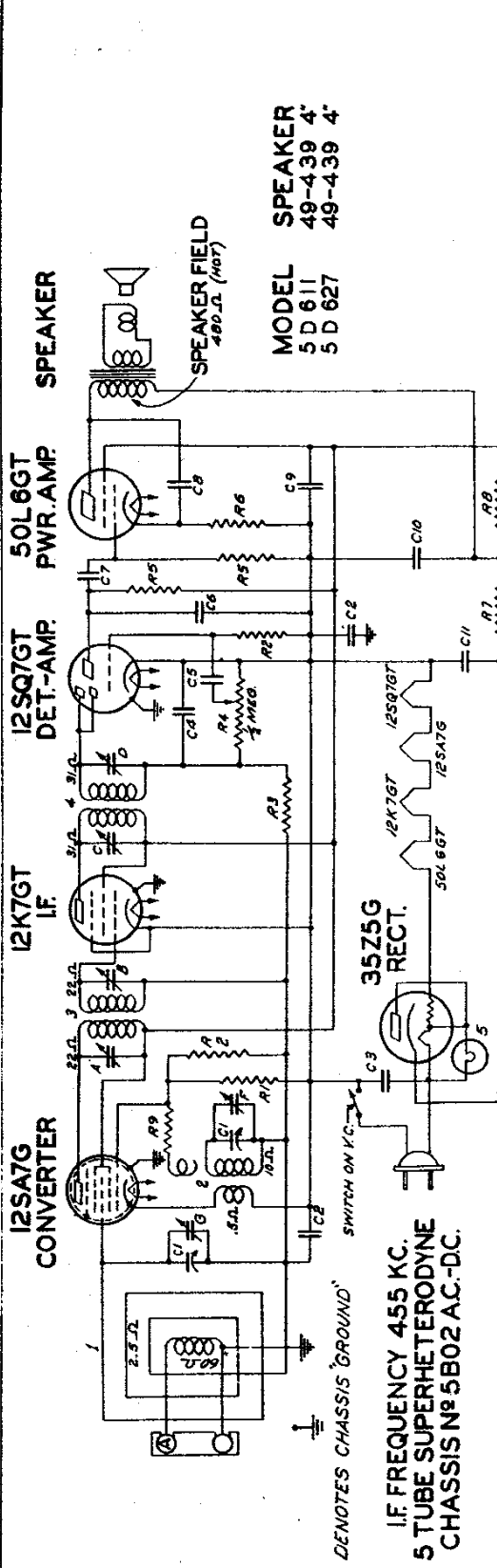
**Bands:**

Resources

**Riders Volume 13 - ZENITH 13-6**

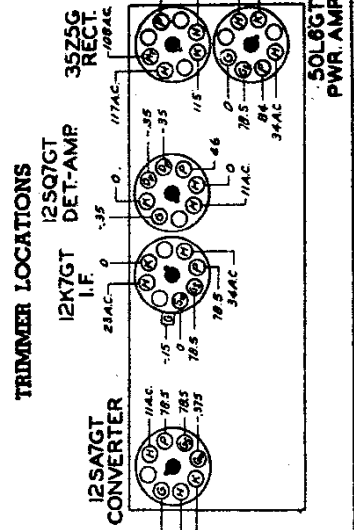
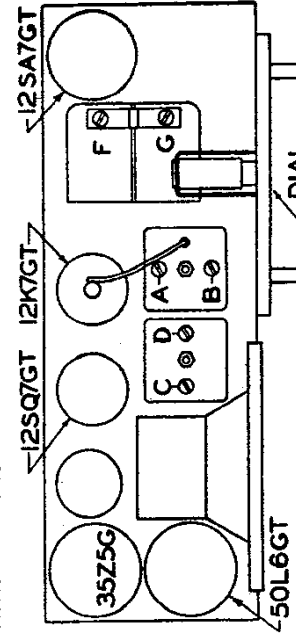
MODELS 5D611, 5D2611,  
5D627, Ch. 5B02

ZENITH RADIO CORP.



**SPEAKER**  
MODEL 5D611 4"  
5D627 4"

DENOTES CHASSIS GROUND  
I.F. FREQUENCY 455 KC.  
5 TUBE SUPERHETERODYNE  
CHASSIS N° 5B02 A.C.-D.C.



QWG PART NO	QWG PART NO	QWG PART NO	DESCRIPTION	QWG PART NO	DESCRIPTION	
C1	12-2008	1	TRIP-GANG VARIABLE	1	59619	WAVEMAGNET ASSEMBLY
C2	55-2871	R1	200V	2	12K7GT	DET. I.F. TRANS.
C3	55-953	R2	600V	3	12S7GT	CONV. I.F. TRANS.
C4	55-492	R3	600V	4	50L6GT	2ND I.F. TRANS.
C5	55-492	R4	600V	5	100-57	PILOT LIGHT 6.3V .15A.
C6	22-282	R5	600V	A	12K7GT	1ST I.F. TRANS. PRI.
C7	22-282	R6	600V	B	12K7GT	2ND I.F. TRANS. SEC.
C8	22-1182	R7	400V	C	12K7GT	2ND I.F. TRANS. SEC.
C9	22-1182	R8	400V	D	12K7GT	2ND I.F. TRANS. SEC.
C10	22-1186	R9	150V	F	12S7GT	BROADCAST OSC. (FOR GANG)
C11			30MFD.	G		BROADCAST ANT. (FOR GANG)

**Stage Gains:**  
Bc. and 455 Kc. I.F.  
Ant. to Conv. grid 7X at 1000 Kc.  
Conv. grid to I.F. grid 74X at 455 Kc.  
Overall audio 225X at .05 watt 400 cycles.

**Volume control full on.**  
Line voltage 117 A.C. or D.C.  
Power consumption 29 watts.  
Power output 1.3 watts.  
Tuning Ranges 540 Kc to 1620 Kc.

Operation	Connect Test Oscillator to	Dummy Antenna	Input Signal Frequency	Band	Set Dial At	Trimmers	Purpose
1	Converter Grid	.1 mfd.	455 Kc.	—	600 Kc.	A, B, C, D	Align I. F.
2	Single Turn Loop coupled loosely to Wave Magnet	—	1500 Kc.	—	1500 Kc.	F	Set Oscillator to Scale
3	Wave Magnet	—	1500 Kc.	—	1500 Kc.	G	Adjust for Maximum