

Zenith Radio Corp.

Model: 5D611

Chassis:

Year: Pre March 1942

Power:

Circuit:

IF:

Tubes:

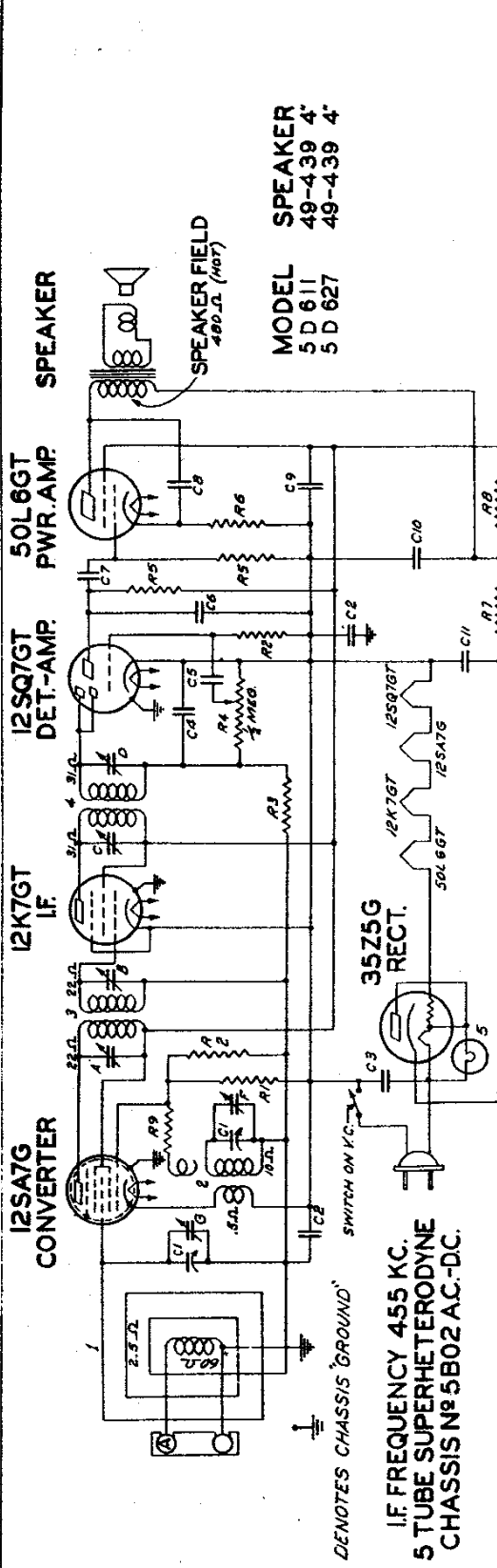
Bands:

Resources

Riders Volume 13 - ZENITH 13-6

MODELS 5D611, 5D2611,
5D627, Ch. 5B02

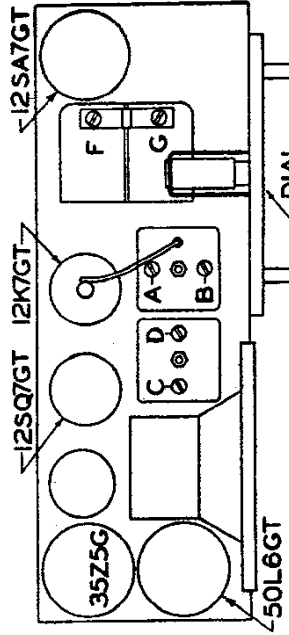
ZENITH RADIO CORP.



SPEAKER
MODEL 5D 611 49-4.39 4"
5 D 627 49-4.39 4"

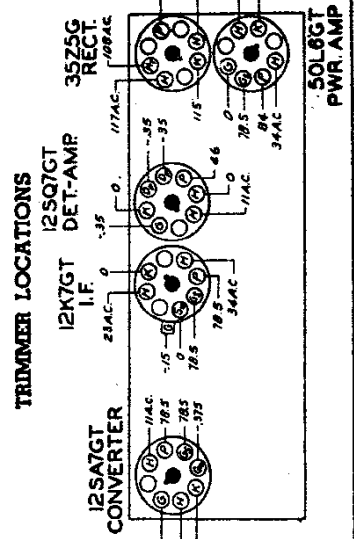
I.F. FREQUENCY 455 KC.
5 TUBE SUPERHETERODYNE
CHASSIS N^o 5B02 A.C.-D.C.

QWG MT	PART NO	DESCRIPTION	QWG MT	PART NO	DESCRIPTION
C1	12-2008	TWO-GANG VARIABLE	1	5 9619	WAVEMAGNET ASSEMBLY
C2	55-2871	500 V. .03 MFD.	2	1 9456	OSC. COIL ASSEMBLY
C3	55-953	500 V. .002 MFD.	3	95-596	DET. I.F. TRANS.
C4	55-492	.002 MFD.	4	95-794	2ND I.F. TRANS.
C5	22-243	.01 MFD.	5	100-57	PILOT LIGHT 6.3 V. .15 A.
C6	22-243	.01 MFD.	A	1	1ET I.F. TRANS. PRI.
C7	22-243	.01 MFD.	B	1	1ET I.F. SEC.
C8	22-1182	100 MFD. ELECTROLYTIC	C	1	225 I.F. PRI.
C9	100-1186	150 V. .150 MFD.	D	1	225 I.F. SEC.
C10	100-1186	150 V. .150 MFD.	E	1	BROADCAST OSC. (FOR GANG)
C11			F	1	BROADCAST ANT. (FOR GANG)



Stage Gains:
Bc. and 455 Kc. I.F.
Ant. to Conv. grid 7 X at 1000 Kc.
Conv. grid to I.F. grid 74 X at 455 Kc.
Overall audio 225 X at .05 watt 400 cycles.

Volume control full on.
Line voltage 117 A.C. or D.C.
Power consumption 29 watts.
Power output 1.3 watts.
Tuning Ranges 540 Kc to 1620 Kc.



Operation	Connect Test Oscillator to	Dummy Antenna	Input Signal Frequency	Band	Set Dial At	Trimmers	Purpose
1	Converter Grid	.1 mfd.	455 Kc.	—	600 Kc.	A, B, C, D	Align I. F.
2	Single Turn Loop coupled loosely to Wave Magnet	—	1500 Kc.	—	1500 Kc.	F	Set Oscillator to Scale
3	Wave Magnet	—	1500 Kc.	—	1500 Kc.	G	Adjust for Maximum