

## Zenith Radio Corp.

**Model:** 5A127

**Chassis:**

**Year:** Pre August 1939

**Power:**

**Circuit:**

**IF:**

**Tubes:**

**Bands:**

### Resources

**Riders Volume 10 - ZENITH 10-15**

**Riders Volume 10 - ZENITH 10-28**



MODELS 5A119, 5A126, 5A127  
 5A151, Chassis 5517A  
 MODELS 6VA27, 6VA62  
 Chassis 5629

ZENITH RADIO CORP.

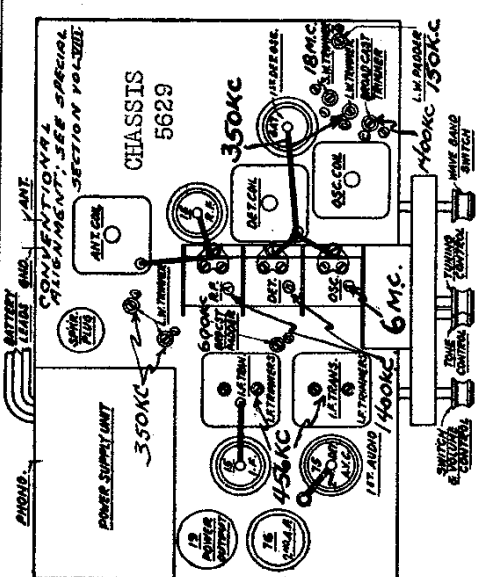
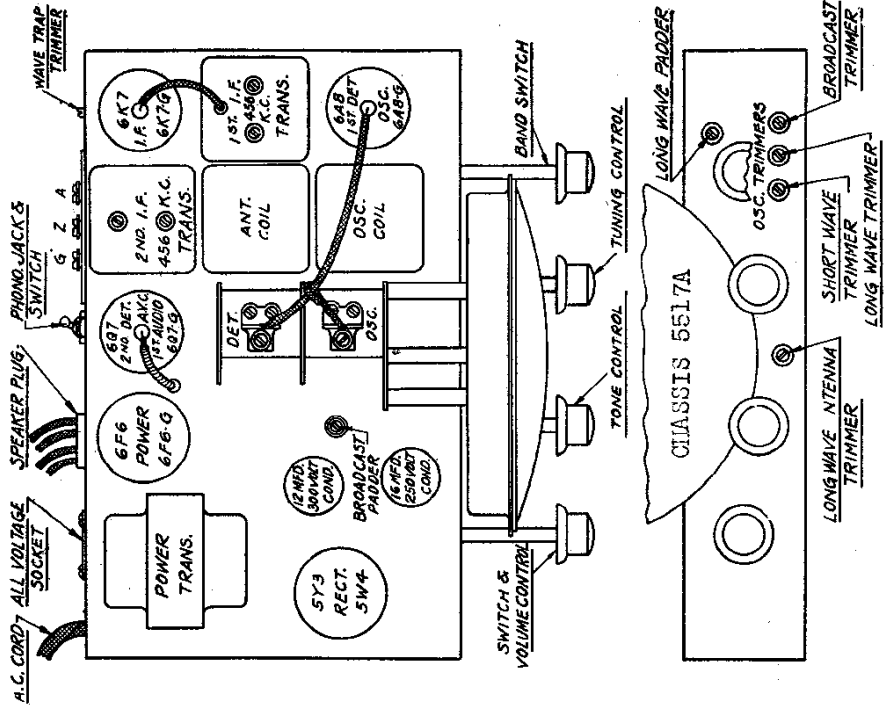
Alignment, Socket Trimmers

CHASSIS 5517A

IMPORTANT!



Connect ordinary single wire antenna to A. Jumper wire placed between Z and G (shipped from factory in this manner.)  
 When using a ZENITH DOUBLET ANTENNA, remove jumper wire between Z and G and attach doublet lead-in to A and Z.



CHASSIS 5517A ALIGNMENT PROCEDURE

- (1) Connect the output leads of the signal generator to the grid of the first detector and receiver ground. Also connect an output meter across the speaker transformer leads.
- (2) Set the signal generator at 456 K.C. and carefully adjust the four I.F. trimmers to the point giving the highest reading of the output meter. These adjustments should be repeated several times to secure the greatest accuracy.
- (3) All adjustments should be made using as weak an output from the signal generator as possible in order to prevent the A.V.C. action from affecting the output readings.
- (4) Change the signal generator leads to the antenna and ground terminals of the receiver.
- (5) Adjust the wave trap (located on rear of chassis) for minimum output reading.
- (6) Set signal generator at 6 M.C. Switch receiver to band B and adjust osc. trimmer on gang for correct dial reading at 50 meters.
- (7) Set signal generator at 1400 K.C. Switch receiver to band A and adjust broadcast trimmer (see diagram) for correct dial reading at 215 meters. Also adjust det. trimmer on gang for greatest output reading.
- (8) Set signal generator to 600 K.C. and rock pointer past 500 meters on dial while adjusting the broadcast padder (adjacent to gang) to combination giving the greatest output reading.
- (9) Repeat operation No. 6.
- (10) Set the signal generator at 17 M.C. Switch the receiver to band C and adjust short wave trimmer while rocking pointer past 17.5 meters on dial to combination giving the greatest output.
- (11) Set the signal generator at 375 K.C. Switch receiver to Band D and adjust the long wave trimmer for correct dial reading at 800 meters. Also adjust the long wave ant. trimmer to resonance.
- (12) Set the signal generator at 167 K.C. Rock the pointer past 1800 meters on dial and adjust the long wave padder to point giving the highest output.
- (13) Repeat operation No. 10.