

## Zenith Radio Corp.

**Model:** 5J255

**Chassis:**

**Year:** Pre October 1937

**Power:**

**Circuit:**

**IF:**

**Tubes:**

**Bands:**

### Resources

**Riders Volume 8 - ZENITH 8-7**

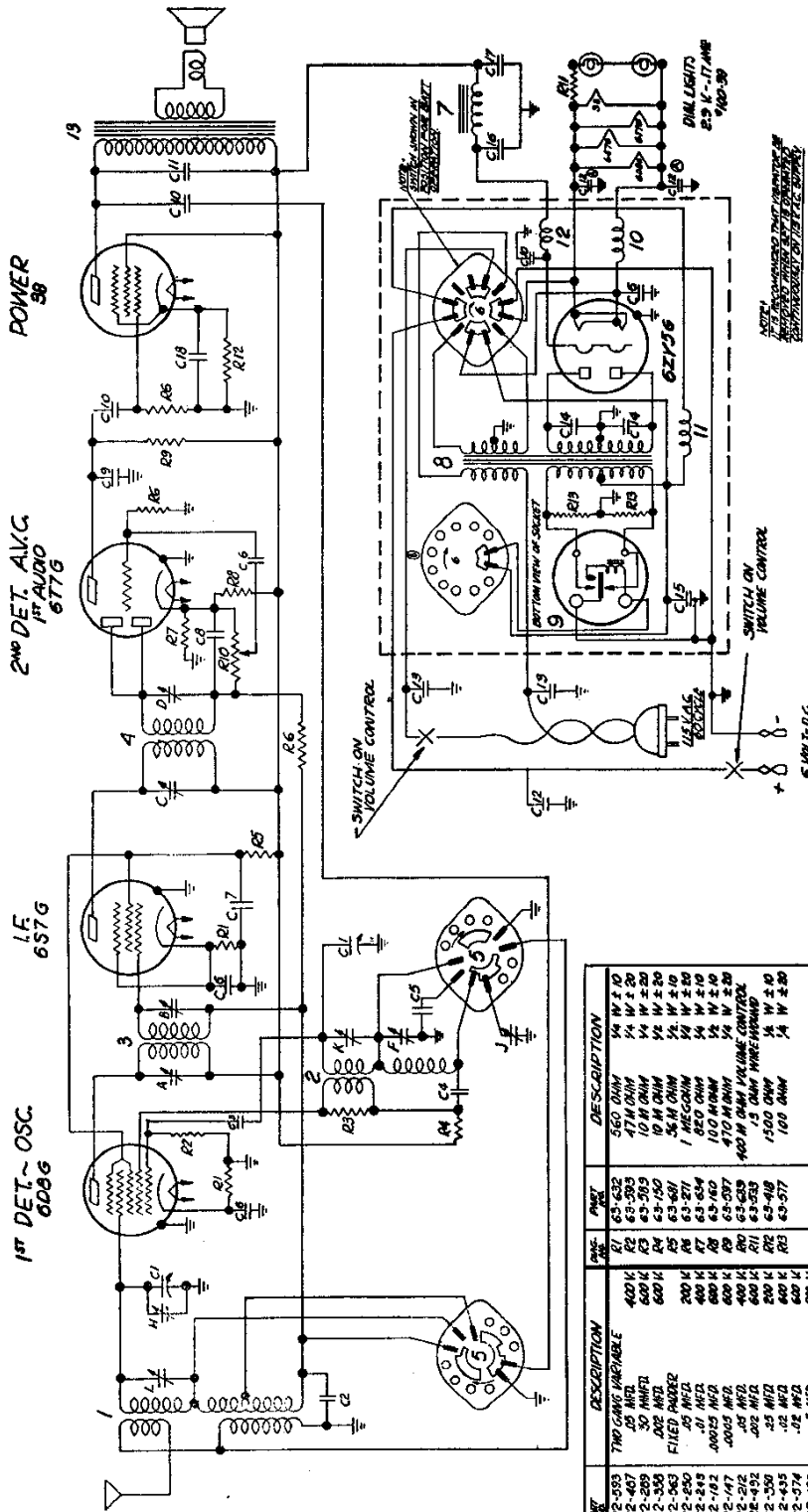
**Riders Volume 8 - ZENITH 8-8**

ZENITH RADIO CORP.

MODELS 5J217, 5J247, 5J255

Chassis 5524

Schematic, Parts



FOR PHONO. DATA, SEE INDEX

I.F. FREQUENCY 456 K.C.  
 5 TUBE BATTERY SUPERHETERODYNE  
 6 VOLT D.C. #115 VOLT A.C.  
 Models 5-J-217, 5-J-247, 5-J-255 (5524 Chassis)

MODEL	5-J-217	5-J-247	5-J-255
SPEAKER	49-153	49-153	49-153
	43-150	43-150	43-150

ZENITH RADIO CORP.  
 CHICAGO, ILLINOIS

QTY.	PART	DESCRIPTION
1	3-5303	ANT. COIL & SHIELD ASSEMBLY
2	5-4909	OSCILLATOR CH. ASSEMBLY
2	95-443	1st I.F. TRANSFORMER
2	95-444	2nd I.F. TRANSFORMER
4	95-444	POWER SUPPLY SWITCH
5	95-405	POWER SUPPLY SWITCH
7	95-298	POWER CHOKES
8	95-182	POWER TRANSFORMER
9	186-11	VIBRATOR
10	5-278	P.F. CHOKE ASSEMBLY
11	5-5048	P.F. CHOKE ASSEMBLY
12	20-92	P.F. CHOKE ASSEMBLY
13		SPEAKER TRANSFORMER

QTY.	DESCRIPTION
1	560 OHM
2	47M OHM
3	10 M OHM
4	10 M OHM
5	10 M OHM
6	10 M OHM
7	10 M OHM
8	10 M OHM
9	10 M OHM
10	10 M OHM
11	10 M OHM
12	10 M OHM
13	10 M OHM
14	10 M OHM
15	10 M OHM
16	10 M OHM
17	10 M OHM
18	10 M OHM
19	10 M OHM
20	10 M OHM
21	10 M OHM
22	10 M OHM
23	10 M OHM
24	10 M OHM
25	10 M OHM
26	10 M OHM
27	10 M OHM
28	10 M OHM
29	10 M OHM
30	10 M OHM
31	10 M OHM
32	10 M OHM
33	10 M OHM
34	10 M OHM
35	10 M OHM
36	10 M OHM
37	10 M OHM
38	10 M OHM
39	10 M OHM
40	10 M OHM
41	10 M OHM
42	10 M OHM
43	10 M OHM
44	10 M OHM
45	10 M OHM
46	10 M OHM
47	10 M OHM
48	10 M OHM
49	10 M OHM
50	10 M OHM
51	10 M OHM
52	10 M OHM
53	10 M OHM
54	10 M OHM
55	10 M OHM
56	10 M OHM
57	10 M OHM
58	10 M OHM
59	10 M OHM
60	10 M OHM
61	10 M OHM
62	10 M OHM
63	10 M OHM
64	10 M OHM
65	10 M OHM
66	10 M OHM
67	10 M OHM
68	10 M OHM
69	10 M OHM
70	10 M OHM
71	10 M OHM
72	10 M OHM
73	10 M OHM
74	10 M OHM
75	10 M OHM
76	10 M OHM
77	10 M OHM
78	10 M OHM
79	10 M OHM
80	10 M OHM
81	10 M OHM
82	10 M OHM
83	10 M OHM
84	10 M OHM
85	10 M OHM
86	10 M OHM
87	10 M OHM
88	10 M OHM
89	10 M OHM
90	10 M OHM
91	10 M OHM
92	10 M OHM
93	10 M OHM
94	10 M OHM
95	10 M OHM
96	10 M OHM
97	10 M OHM
98	10 M OHM
99	10 M OHM
100	10 M OHM

NOTE - TERMINALS F, K, L & L MOUNTED ON BAKELITE STRIP #22-324

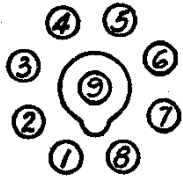
MODELS 5J217, 5J247, 5J255  
Chassis 5524

ZENITH RADIO CORP.

Voltage, Socket, Trimmers  
Alignment

**SOCKET VOLTAGES**

Tube	Position	1	2	3	4	5	6	7	8	9
6D8	Converter	0	0	129	42.5	-2	110	6.3	1.5	0
	Osc.	0	0	130	42.5	1.5	-	6.3	1.5	0
6S7	I. F.	0	0	130	42.5	1.5	-	6.3	1.5	0
6T7	2nd Def. A.V.C.	0	0	23	.1	.1	-	6.3	.5	0
	1st Audio	0	0	23	.1	.1	-	6.3	.5	0
6ZY5G	Rect.	0	6.3	-3.5	-	-3.5	-	0	140	-
		H	P	S	K	H	G			
38	Power	0	124	129	12	6.3	0			



All voltages measured from point indicated to ground using a 1000 Ohm per Volt meter, antenna and ground disconnected. Line voltage 117V. Consumption 16W. Battery voltage 6.3V consumption 2.1 Amp. Power Output .84W.

**BOTTOM VIEW  
OF SOCKET**

**ALIGNMENT PROCEDURE**

Operation	Connect Test Oscillator to—	Dummy Antenna	Set Test Osc. to	Band	Set Dial At	Adjust Trimmers	Purpose
1	1st Def. Grid	1/2 Mfd.	456	Br'dc't	600	ABCD	I. F. Alignment
2	Rec. Ant. Lead	200 Mmfd.	1500	"	1500	F	Set Osc. to Scale
3	" " "	200 Mmfd.	1500	"	1500	G	Al'gment of Ant.
4	" " "	200 Mmfd.	600	"	600	J	Rock gang & adj. for max. output.
5	" " "	"	"	"	"	FG	Repeat 2 & 3.
6	Rec. Ant. Lead	400 Ohms	18000	S.W.	18000	K	Set Osc. to Scale
7	" " "	400 Ohms	16500	S.W.	16500	L	Rock gang & adj. for max. output.

LOCATION OF TRIMMERS

