

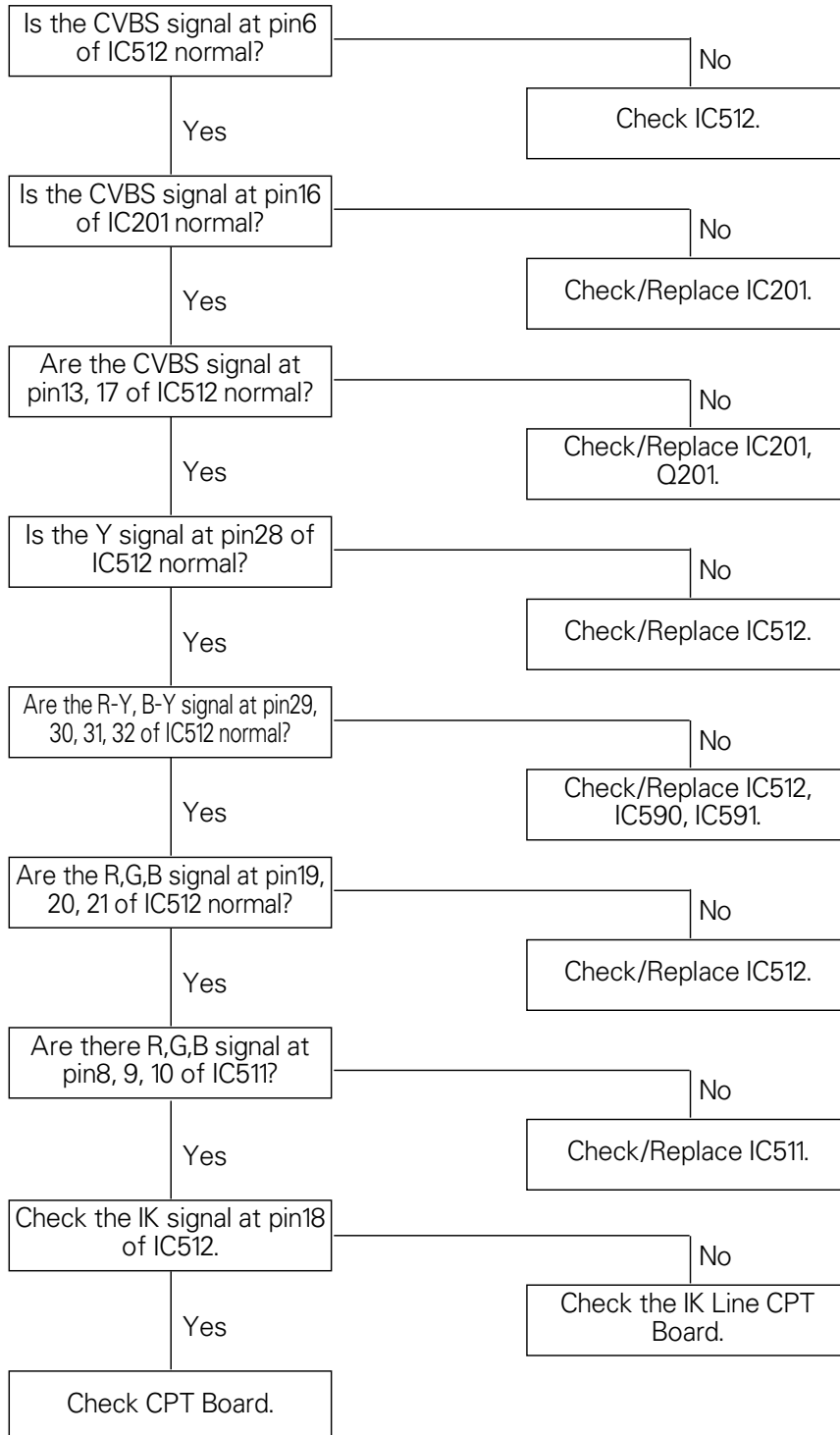
GOLDSTAR CHAS. MC74A

MODEL

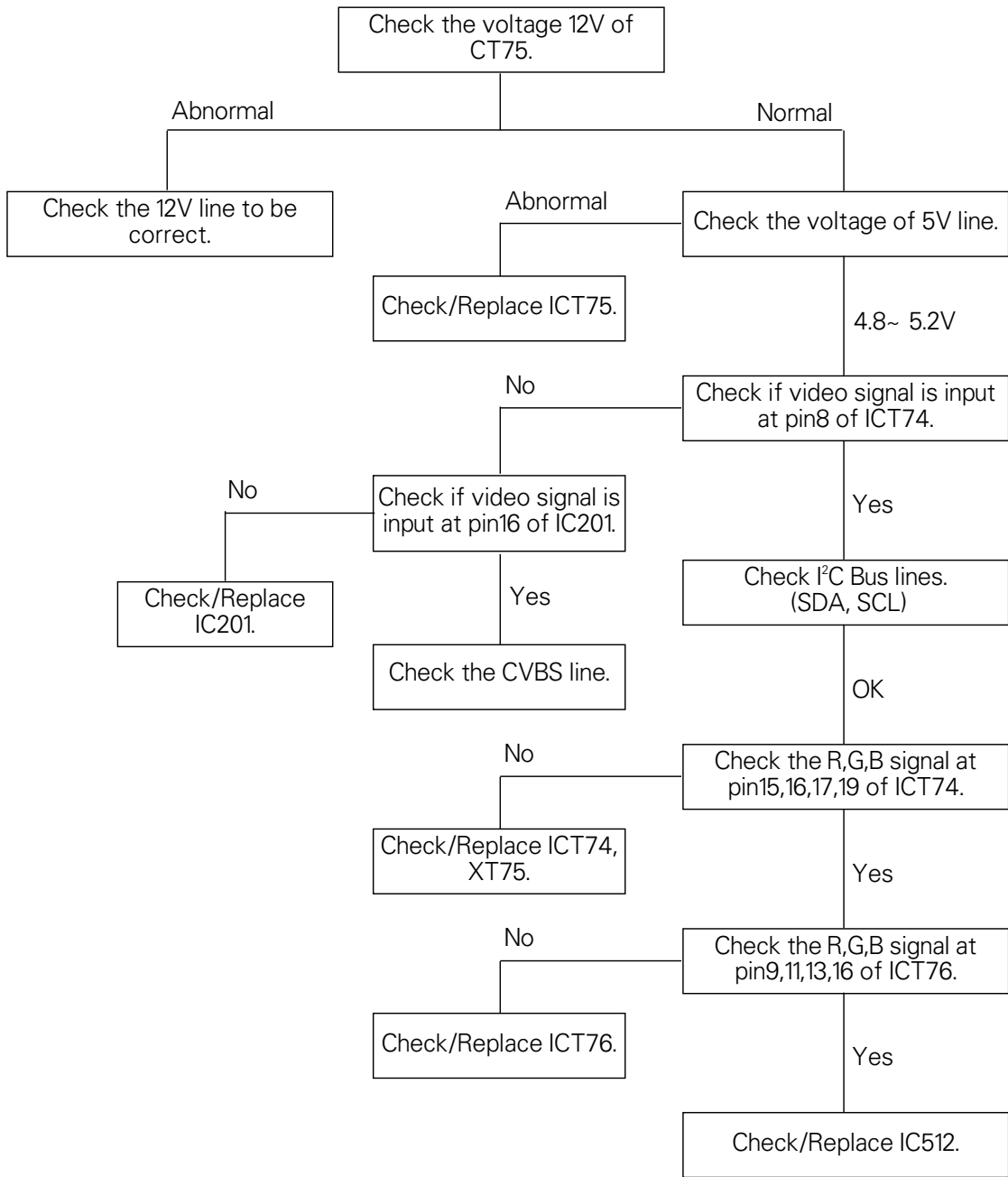
SERVICE MANUAL

TROUBLESHOOTING

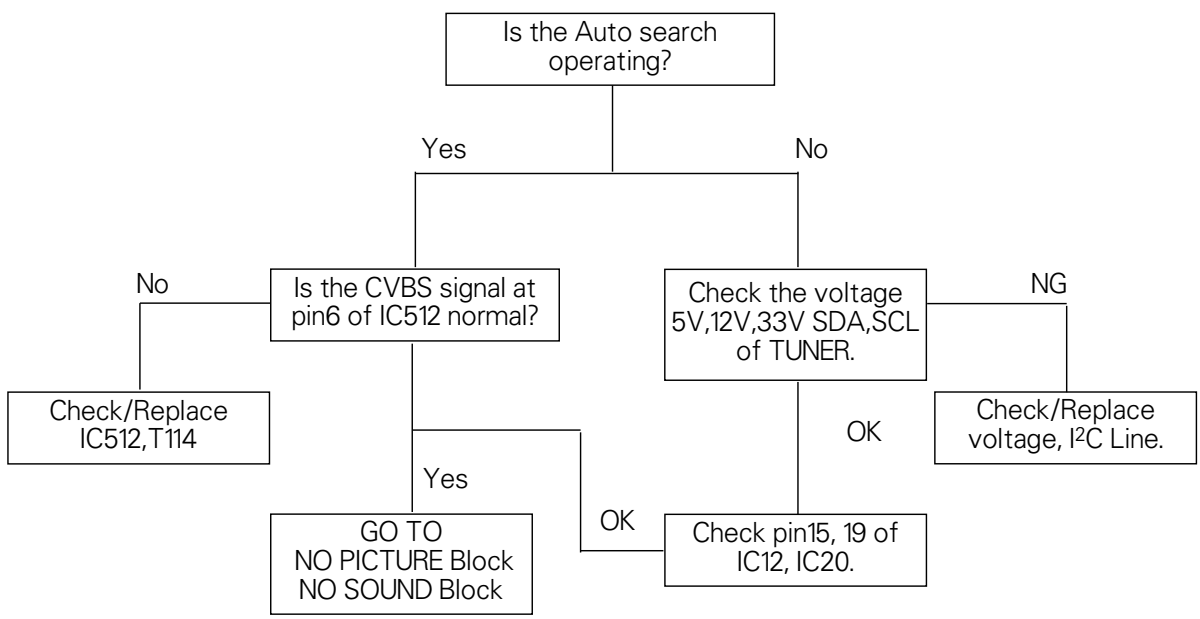
**NO PICTURE/
NO COLOR**



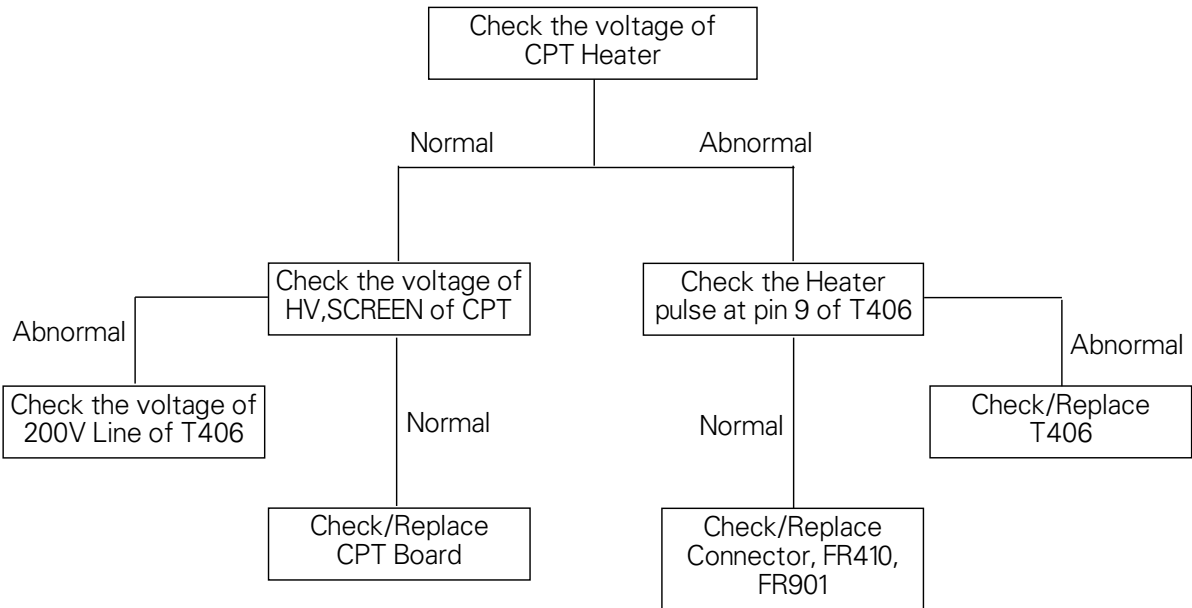
NO TELETEXT



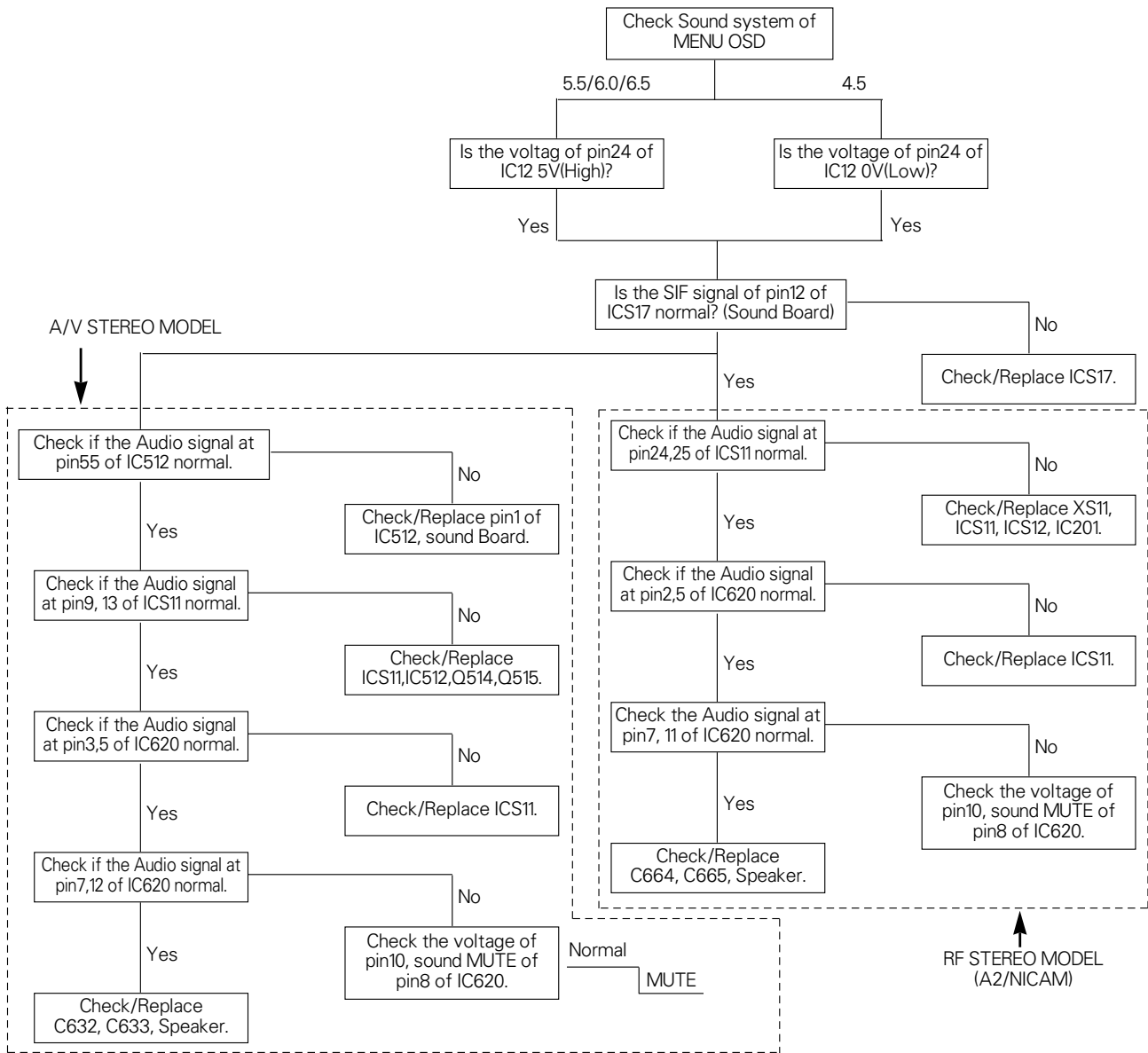
**NO PICTURE/NO SOUND
(RASTER OK)**



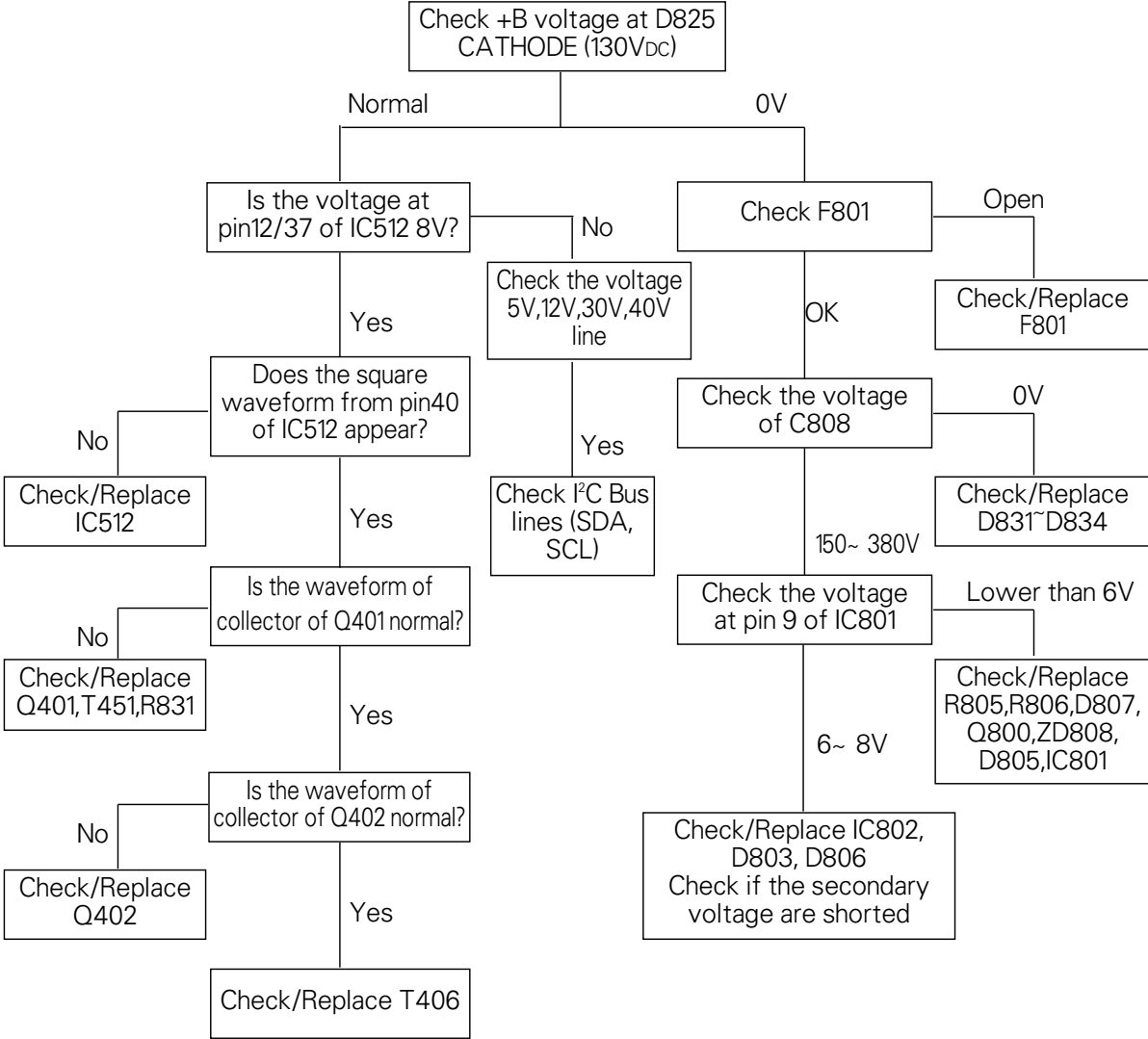
**NO RASTER
(SOUND OK)**



**NO SOUND
(PICTURE OK)**



NO RASTER



ADJUSTMENT INSTRUCTIONS

■ Safety precautions

1. It is safe to adjust after using insulating transformer between the power supply line and chassis input to prevent the risk of electric shock and protect the instrument.
2. Never disconnect leads while the TV receiver is on.
3. Don't short any portion of circuits while power is on.
4. The adjustment must be done by the correct appliances.
But this is changeable in view of productivity.
5. Unless otherwise noted, set the line voltage to 100~ 270Vac, 50Hz.

■ Test Equipment required

1. VIF sweep generator/Alignment scope
2. Color bar/cross-hatch pattern generator
3. DC power supply
4. Digital multi-meter
5. Color analyzer
6. Oscilloscope

1. SIF adjustment

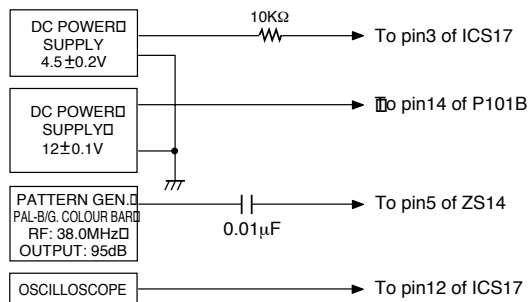


Fig.1: Connection Diagram of Equipment for SIF adjustment

Test Point : Pin12 of ICS17 (SUB Board)

Adjust : LS12 (SUB Board)

- 1) Connect the measuring equipment to the TV as shown in Fig.1.
- 2) Set RF output level of Sweep S.G (Signal Generator) to 95dBuV.
- 3) Set Alignment Scope, Volts/Div to 100mV, AC/DC switch to AC, Line/Ext switch to Ext.
- 4) Adjust SIF COIL (LS12) on SUB Board until the bottom of 38.0MHz mark is on the center line as Fig.2.

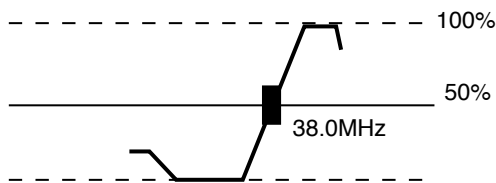


Fig.2: SIF Adjustment waveform

2. VCO (Voltage Controlled Oscillator) Adjustment

Test Point : Observing display

Adjust : A-PLL ▶ (SVC-0 mode)

- 1) Input the COLOR BAR pattern with RF frequency is 175.25MHz and 65dB.
- 2) Press the OK buttons on both of Control Board and Remote Controller at the same time to get into SVC-0 mode.
- 3) Press CH UP/DOWN (▲/▼) button to select A-PLL ▶ .
- 4) Press VOL +(▶) button and the VCO will be adjusted automatically.
- 5) Press OK(■) button to memorize the adjusted data.

3. RF AGC (Auto Gain Control)Adjustment

Test Point: TP1 (J173) on Main Board

Adjust: AGC 28 (SVC-0 mode)

The RF AGC was aligned at the time of manufacture for optimum performance over a wide range conditions. Readjust should not be necessary unless unusual local conditions exist, such as:

- 1) Channel interference in a CATV system.
- 2) Picture bending and/or color beats, which are unusually due to excessive RF signal input when the receiver is too close to a transmitting tower or when the receiver is connected to an antenna distribution system where the RF signal has been amplified.
In this case, the input signal should be attenuated (with pad or filter) to a satisfactory level.
- 3) Picture noise is caused by "broadcast noise" or weak signal. If the broadcast is "clean" and the RF signal is at least 1mV (60dBuV), the picture will be noise free in any area.

Adjusting the RF AGC to one end will usually cause a relatively poor signal to noise ratio;
Adjusting to the other end will usually cause a degradation of over load capabilities resulting in color beats or adjacent channel reference.

For best results, adjust the while performing on all over local channels, or the voltage at J173(Main Board) will be 5.8±0.1Vdc in RF level 65±1dBuV.

- 1) Input the COLOR BAR pattern of PAL-B/G 65dB.
- 2) Connect the Multimeter to AGC test point TP1 (J173).
- 3) Press the OK buttons on both of Control Board and Remote Controller at the same time to get into SVC-0 mode.
- 4) Press CH UP/DOWN (▲/▼) button to select AGC 28 .
- 5) Press VOL UP/DOWN (◀ / ▶) button until the voltage of TP1 (J173) is 5.8±0.1Vdc.
- 6) Press OK(■) button to memorize the adjusted data.

4. Vertical/Horizontal/E-W(East-West) Adjustment

NOTE: These adjustments are already aligned at the time of manufacture for optimum performance. Readjust of them should not be necessary unless IC2(EEPROM) is defective. Because all the information of these adjustment are memorized in that IC.

- 1) Tune the TV set to receive a digital pattern unless otherwise noted.
- 2) Press the OK buttons on both of Control Board and Remote Controller at the same time.
- 3) Press the yellow button on the Remote Controller to select SVC-1 mode.
- 4) Press CH UP/DOWN (▲/▼) button for desirous function adjustment.
- 5) Press VOL UP/DOWN (◀/▶) button for correct picture.
- 6) Press OK(■) button to memorize the adjusted data.

Adjustment

HS (Horizontal Shift)

Adjust so that vertical center line of the digital pattern is in accord with geometric vertical center of the picture tube.

VS (Vertical Shift)

Adjust so that the horizontal center line of digital circle pattern is in accord with geometric horizontal center of the picture tube.

VL (Vertical Linearity)

Adjust so that the boundary line between upper and lower half is in accord with vertical blanking line.

VA (Vertical Height)

Adjust inside of the circle at top and bottom display.

EW (East-West Width)

Adjust so that digital circle pattern looks like exact circle.

EP (East-west Parabolar)

Adjust so that middle portion of the outermost left and right vertical parallel with vertical lines of the picture tube.

EC (East-west Coner)

Adjust so that the vertical line at every 4 corners of the screen looks like parallel with the vertical lines of the picture tube.

ET (East-west Trapezium)

Adjust to make the length of top horizontal line same with it of the bottom horizontal line.

SC (Vertical "S" Correction)

Adjust so that all distance between each horizontal lines are to be the same.

5. Hold Down Check

Apply 5Vdc to X-RAY TP and check if TV set is turned off (ST-BY).

6. Focus Adjustment

NOTE: This adjustment should be performed after warming up for 10 minutes.

Test Point : Observe display

Adjust : Focus control of FBT

- 1) Tune the TV set to receive a Color Bar pattern.
- 2) Adjust Focus control of FBT for the best overall focus on the middle-left of the screen.

7. Screen Voltage Adjustment

Test Point : RK (Red Cathod of CPT Board)

Adjust : Screen Control of FBT

- 1) Tune the TV set to receive a Color Bar pattern.
- 2) Press the PSM button on the remote controller to set Standard mode(Standard mode: contrast-100%, brightness, color and sharpness-50%, tint-center)
- 3) Connect the probe of oscilloscope to the Rk (Red Cathod of CPT Board).
- 4) Adjust Screen Volume of FBT so that the waveform is the same as below Fig.3.

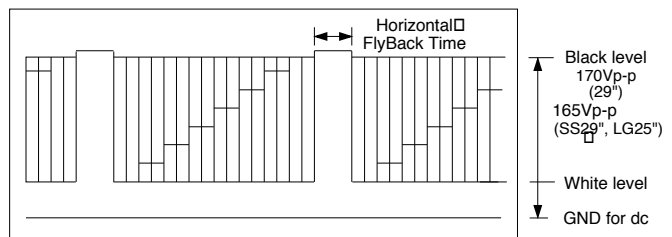
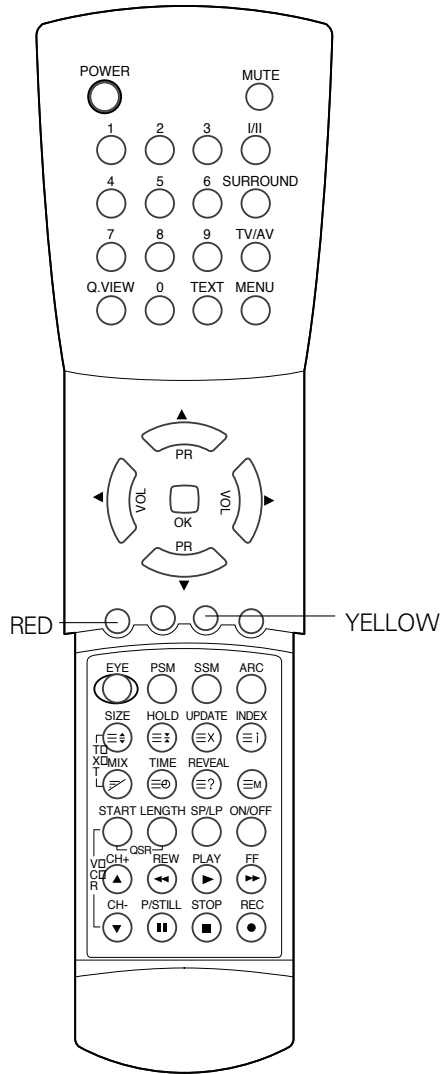


Fig. 3: The waveform at RK(Red Cathod) on CPT Board

8. White Balance (W/B) Adjustment

NOTE: This adjustment should be preformed after screen voltage adjustment.

- 1) Tune the TV set to receive white pattern of PAL standard signal.
- 2) Adjust contrast, brightness for 45 ± 1 ft-L at the center area of screen.
- 3) Press the OK buttons on both of Control Board and Remote Controller at the same time.
- 4) Press the yellow button on the Remote Controller twice to select SVC-2 mode.
- 5) Press PR+ or PR- button for desirous function adjustment.
- 6) Adjust VOL+ or VOL- button for G Gain is 31.
- 7) Adjust VOL+ or VOL- button in each status of "R Gain-30"/"B Gain-28" for $X=281 \pm 8$, $Y=288 \pm 8$ with color analyzer.

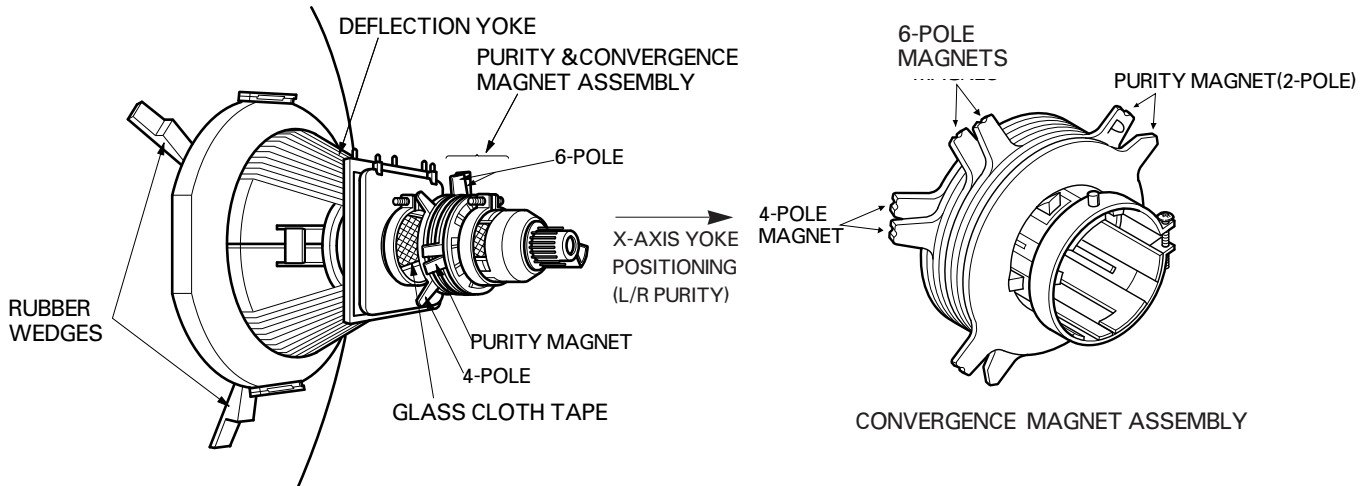


PURITY & CONVERGENCE ADJUSTMENT

Caution:

Convergence and Purity have been factory aligned. Do not attempt to tamper with these alignments. However, the effects of adjacent receiver components, or replacement of picture tube or deflection yoke may require the need to readjust purity any convergence.

5. Reconnect the internal degaussing coil.
6. Position the beam bender locking rings at the 9 o'clock position and the other three pairs of tabs (2,4 and 6 pole magnets) at the 12 o'clock position.



Purity Adjustment

This procedure DOES NOT apply to bonded yoke and picture tube assemblies.

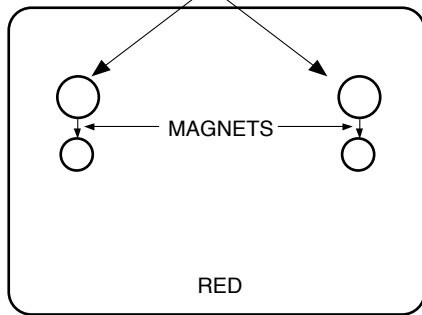
The instrument should be at room temperature (60 degrees F or above) for six (6) hours and be operating at low beam current (dark background) for approximately 20 to 30 minutes before performing purity adjustments.

CAUTION: Do not remove any trim magnets that may be attached to the bell of the picture tube.

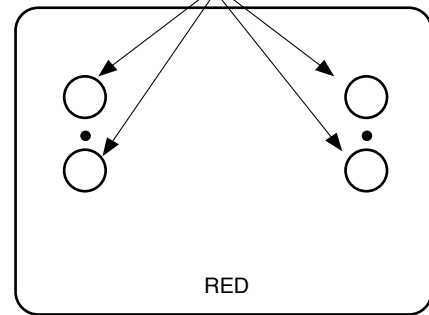
1. Remove the AC power and disconnect the internal degaussing coil.
2. Remove the yoke from the neck of the picture tube.
3. If the yoke has the tape version beam bender, remove it and replace it with a adjustable type beam bender (follow the instructions provided with the new beam bender)
4. Replace the yoke on the picture tube neck, temporarily remove the three (3) rubber wedges from the bell of the picture tube and then slide the yoke completely forward.

7. Perform the following steps, in the order given, to prepare the receiver for the purity adjustment procedure.
 - a. Face the receiver in the "magnetic north" direction.
 - b. Externally degauss the receiver screen with the television power turned off.
 - c. Turn the television on for approximately 10 seconds to perform internal degaussing and then turn the TV off.
 - d. Unplug the internal degaussing coil. This allows the thermistor to cool down while you are performing the purity adjustment. DO NOT MOVE THE RECEIVER FROM ITS "MAGNETIC NORTH" POSITION.
 - e. Turn the receiver on and obtain a red raster by increasing the red bias control (CW) and decreasing the bias controls for the remaining two colors (CCW).
 - f. Attach two round magnets on the picture tube screen at 3 o'clock and 9 o'clock positions, approximately one (1) inch from the edge of the mask (use double-sided tape).

1. ADJUST YOKE Z-AXIS FIRST TO GET EQUAL BLUE COLOR CIRCLES



2. ADJUST BEAM BENDER 2 POLED MAGNET TO GET FOUR EQUAL COLOR CIRCLES



8. Referring to above, perform the following two steps:
 - a. Adjust the yoke Z-axis to obtain equal blue circles.
 - b. Adjust the appropriate beam bender tabs to obtain correct purity (four equal circles).
9. After correct purity is set, tighten the yoke clamp screw and remove the two screen magnets.
10. Remove the AC power and rotate the receiver 180 degrees (facing "magnetic south").
11. Reconnect the internal degaussing coil.
12. Turn the receiver on for 10 seconds (make sure the receiver came on) to perform internal degaussing, and then turn the receiver off.
13. Unplug the internal degaussing coil.
14. Turn on the receiver and check the purity by holding one (1) round magnet at the 3 o'clock and a second round magnet at 9 o'clock position. If purity is not satisfactory, repeat steps 8 through 14.
15. Turn off the receiver and reconnect the internal degaussing coil.

■ Convergence Adjustment

Caution: This procedure DOES NOT apply to bonded yoke and picture tube assemblies. Do not use screen magnets during this adjustment procedure. Use of screen magnets will cause an incorrect display.

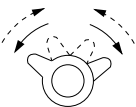
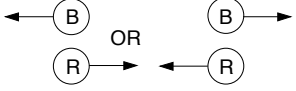

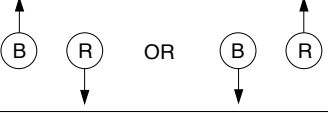

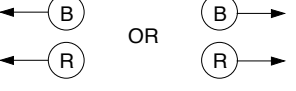

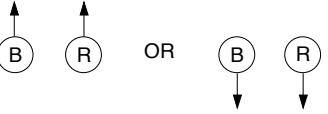
1. Remove AC power and disconnect the internal degaussing coil.
2. Apply AC Power and set the brightness to the Picture Reset condition. Set the Color control to minimum.
3. Apply 8V to the pin42 of IC501.
4. Adjust the Red, Green and Blue Bias controls to get a dim white line.

5. Remove the AC power and 8V from the pin42 of IC501.
6. Reconnect the internal degaussing coil and apply AC power.
7. Turn the receiver on for 10 seconds to perform internal degaussing and then turn the receiver off again.
8. Unplug the internal degaussing-coil.
9. Turn on the receiver, connect a signal generator to the VHF antenna terminal and apply a crosshatch signal.

Caution: During the convergence adjustment procedure, be very careful not to disturb the purity adjustment tabs are accidentally move, purity should be confirmed before proceeding with the convergence adjustments.

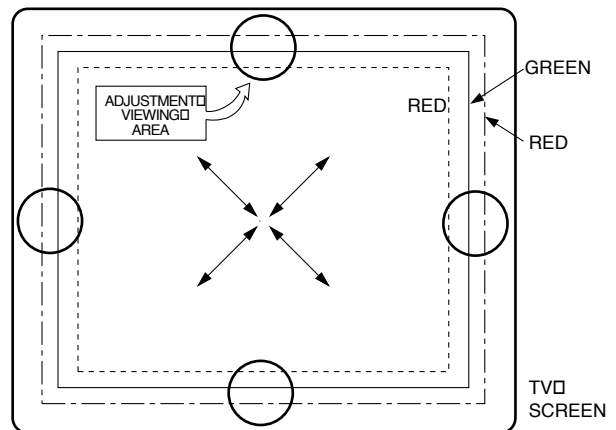
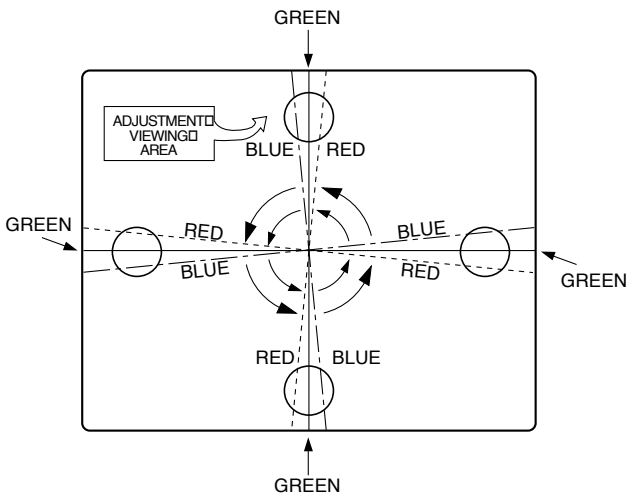
Note: Make sure the focus is set correctly on this instrument before proceeding with the following adjustment.

10. Converge the red and blue vertical lines to the green vertical line at the center of the screen by performing the following steps (below TABLE).
 - a. Carefully rotate both tabs of the 4-pole ring magnet simultaneously in opposite directions from the 12 o'clock position to converge the red and blue vertical lines.
 - b. Carefully rotate both tabs of the 6-pole ring magnet simultaneously in opposite directions from the 12 o'clock position to converge the red and blue (now purple) vertical lines with the green vertical line.
11. Converge the red and blue horizontal with the green line at the center of the screen by performing the following steps. (below TABLE)
 - a. Carefully rotate both tabs of the 4-pole ring magnet simultaneously in the same direction (keep the spacing between the two tabs the same) to converge the red and blue horizontal lines.
 - b. Carefully rotate both tabs of the 6-pole ring magnet simultaneously in same direction (keep the spacing between the two tabs the same) to converge the red and blue (now purple) horizontal lines with the green horizontal line.
 - c. Secure the tabs previously adjusted by locking them in place with the locking tabs on the beam bender.

RING PAIRS	ROTATION DIRECTION OF BOTH TABS	MOVEMENT OF RED AND BLUE BEAMS
4 POLE	 OPPOSITE	 ← (B) OR (B) → (R) → ← (R)
	 SAME	 ↑ (B) (R) OR (B) (R) ↓ ↓
6 POLE	 OPPOSITE	 ← (B) OR (B) → ← (R) OR (R) →
	 SAME	 ↑ (B) (R) OR (B) (R) ↓ ↓

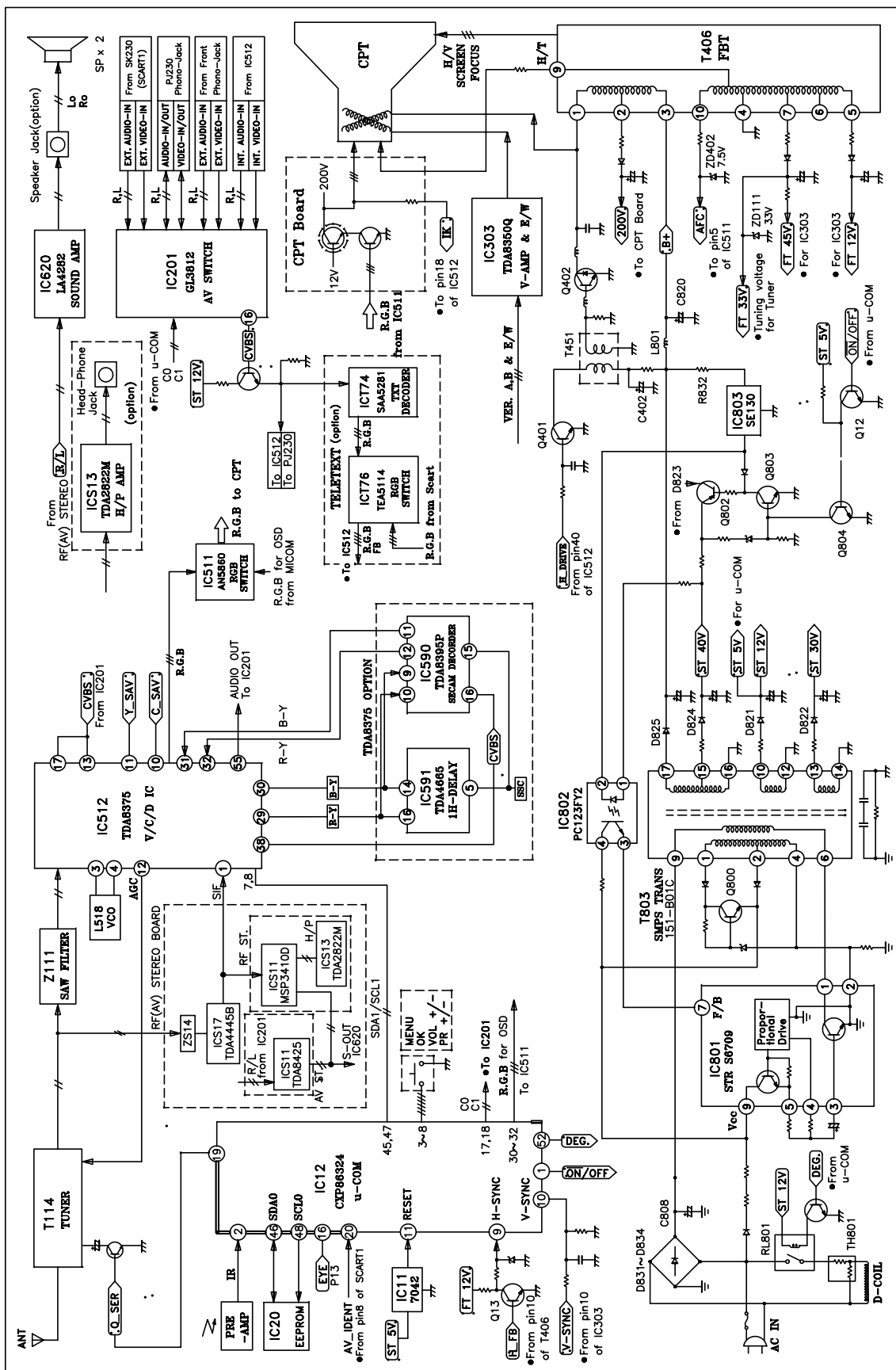
UP/DOWN ROCKING OF THE YOKE CAUSES OPPOSITE ROTATION OF RED AND BLUE RASTERS

LEFT/RIGHT ROCKING OF THE YOKE CAUSES OPPOSITE SIZE CHANGE OF THE RED AND BLUE RASTERS



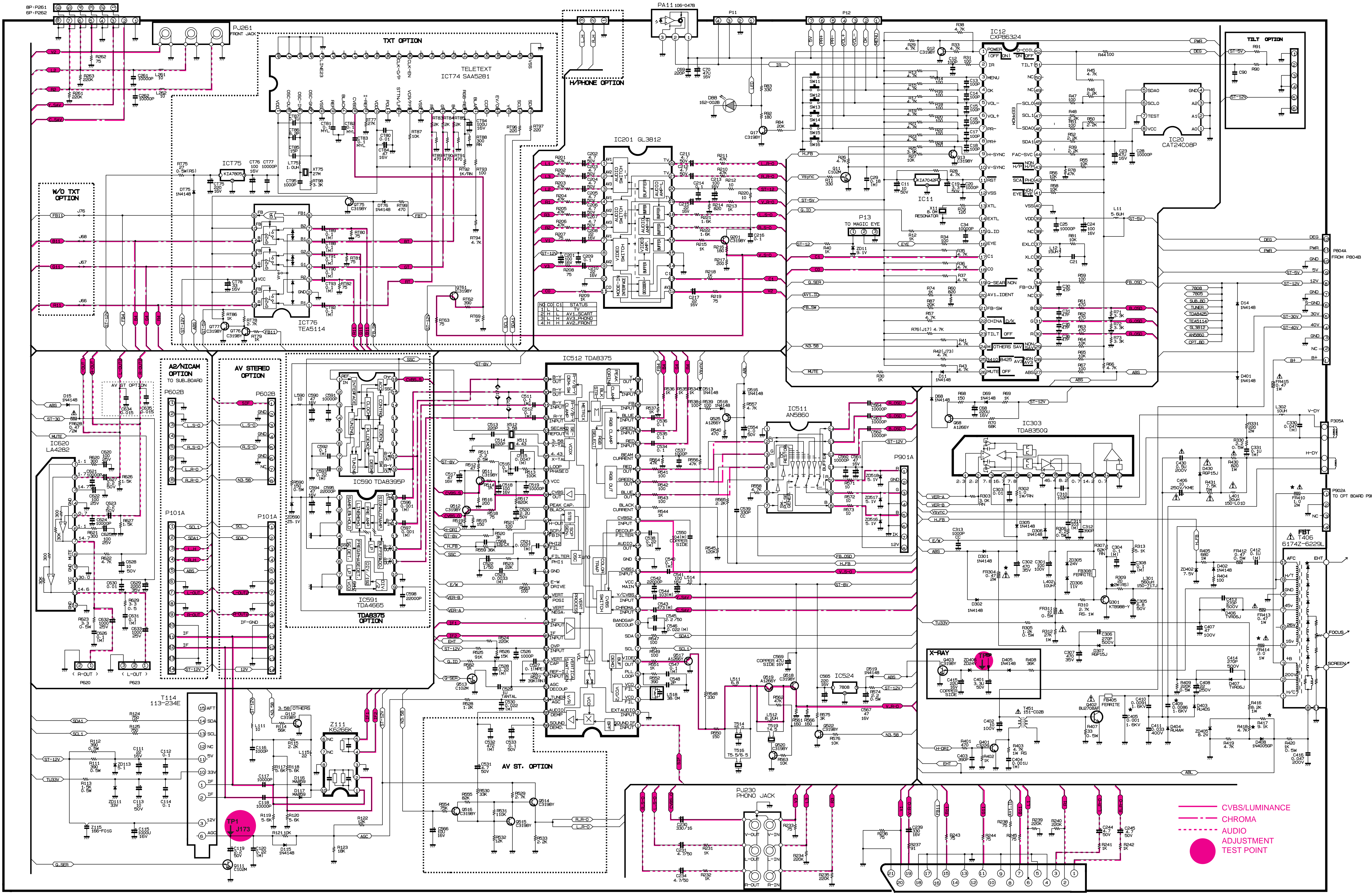
- While watching the 6 o'clock positions on the screen, rock the front of the yoke in a vertical (up/down) direction to converge the red and blue vertical lines. (Fig upper left)
- Temporarily place a rubber wedge at the 12 o'clock position to hold the vertical position of the yoke.
- Check the 3 o'clock and 9 o'clock areas to confirm that the red and blue horizontal lines are converged. If the lines are not converged, slightly offset the vertical tilt of the yoke (move the rubber wedge if necessary) to equally balance the convergence error of the horizontal lines at 3 o'clock and 9 o'clock and the vertical lines at 6 o'clock and 12 o'clock.
- Place a 1.5 inch piece of glass tape over the rubber foot at the rear of the 12 o'clock wedge.
- While watching the 6 o'clock and 12 o'clock areas of the screen, rock the front of the yoke in the horizontal (left to right) motion to converge the red and blue horizontal lines. (Fig. upper right)
- Temporarily place a rubber wedge at the 5 o'clock and 7 o'clock positions to hold the horizontal position of the yoke.
- Check the 3 o'clock and 9 o'clock areas to confirm that the red and blue vertical lines are converged. If the lines are not converged, slightly offset the horizontal tilt of the yoke (move the temporary rubber wedges if necessary) to equally balance the convergence error of the horizontal lines at 6 o'clock and 12 o'clock and the vertical lines at 3 o'clock and 9 o'clock.
- Using a round magnet confirm purity at the center, right and left sides and corners. See Purity Adjustment Procedure.
- Reconfirm convergence and apply a 1.5 inch piece of glass tape over the rubber foot at the rear of the 5 o'clock and the 7 o'clock wedges.

BLOCK DIAGRAM



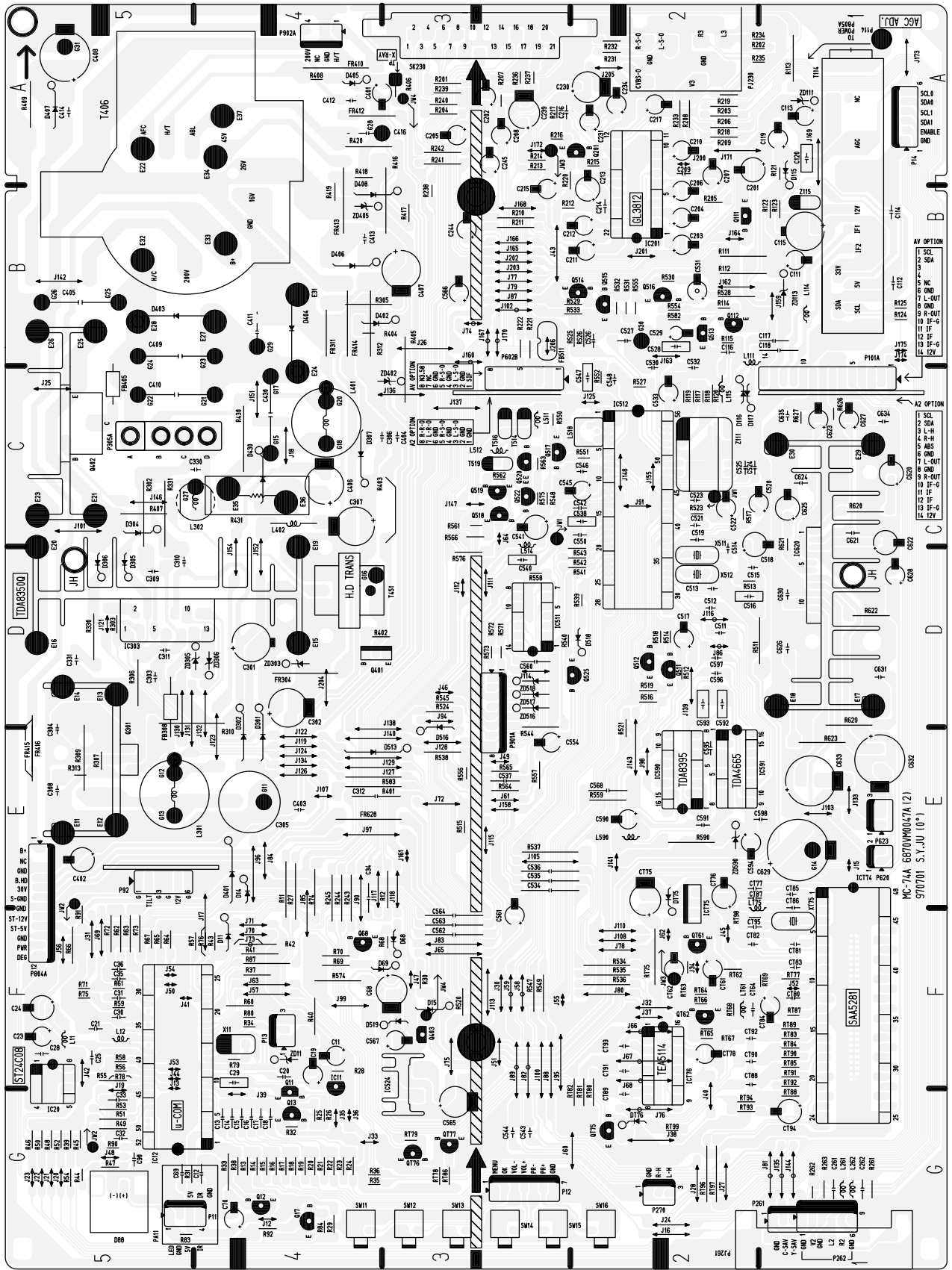
Service Sheet of MC-74A (1/2)

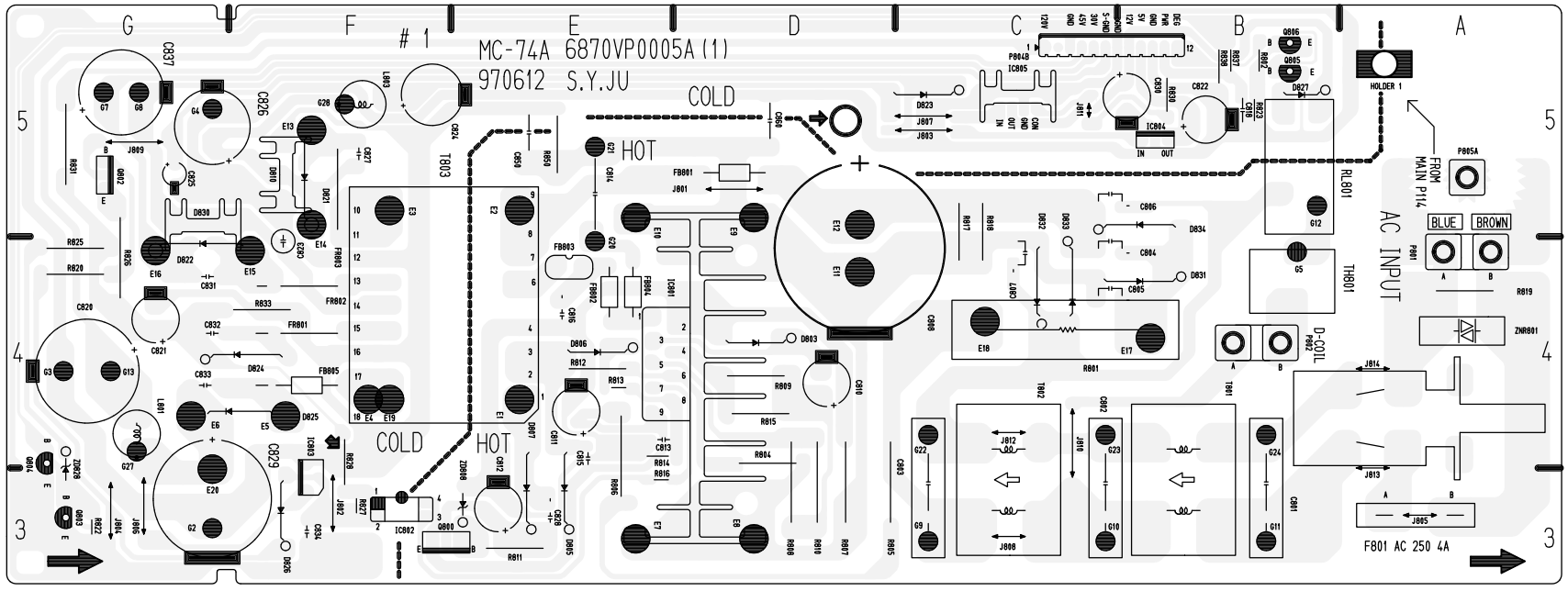
PART NO : 3854VA0018A-S1
DATE : Nov 24 , '97



— CVBS/LUMINANCE
- - - CHROMA
... AUDIO
● TEST POINT

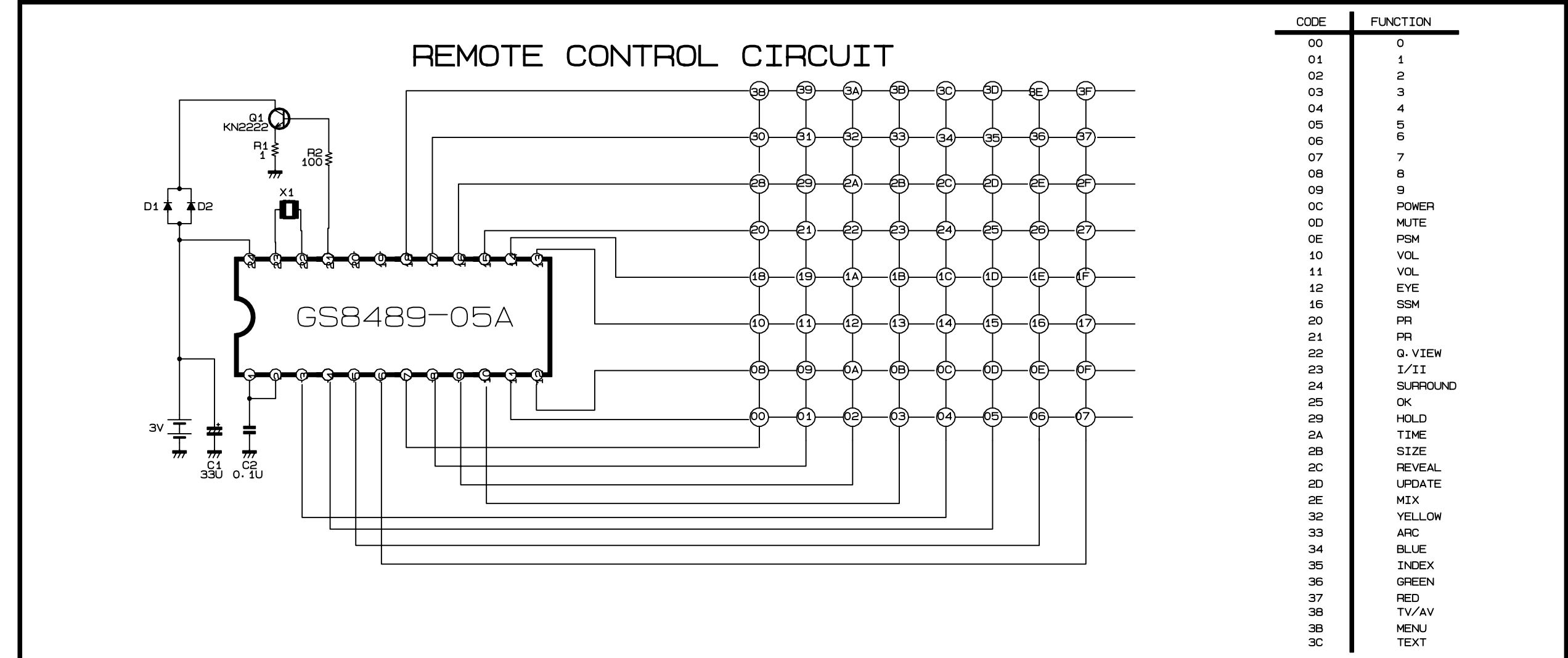
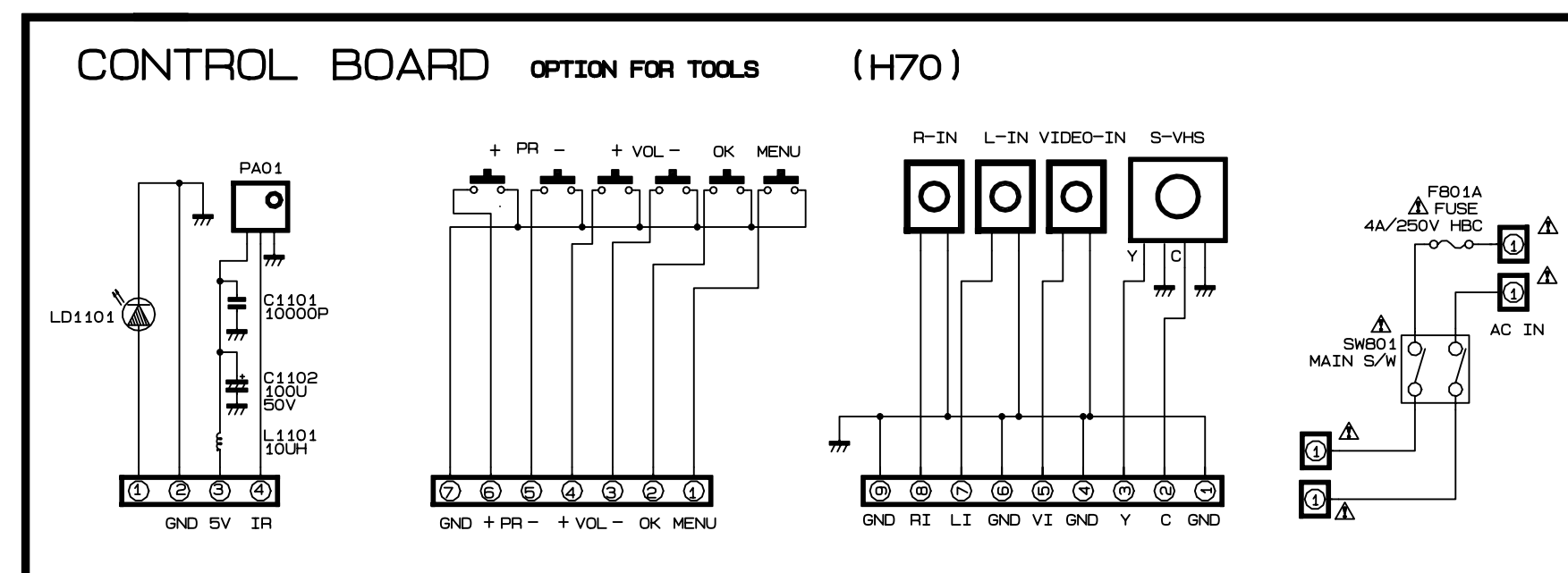
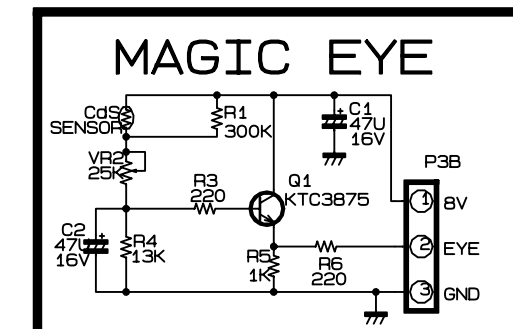
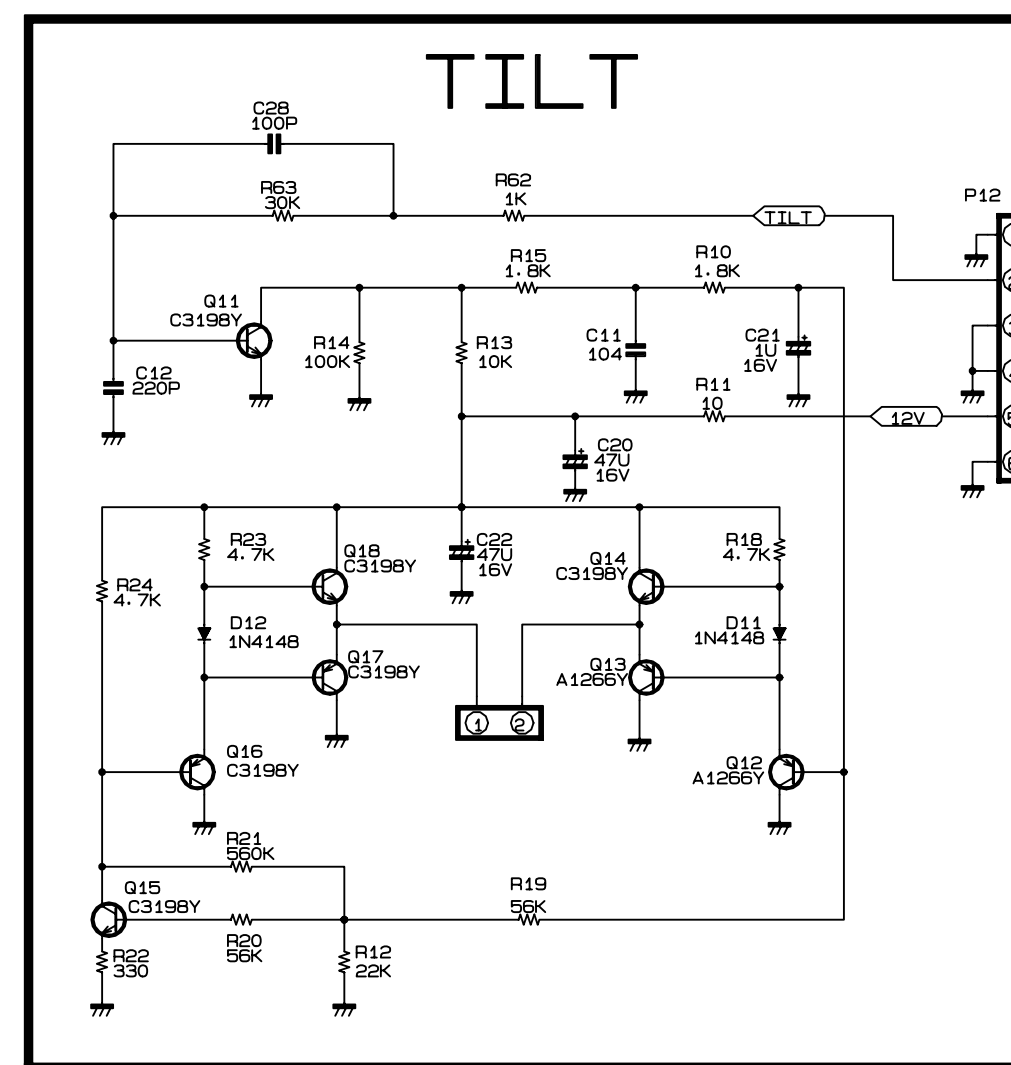
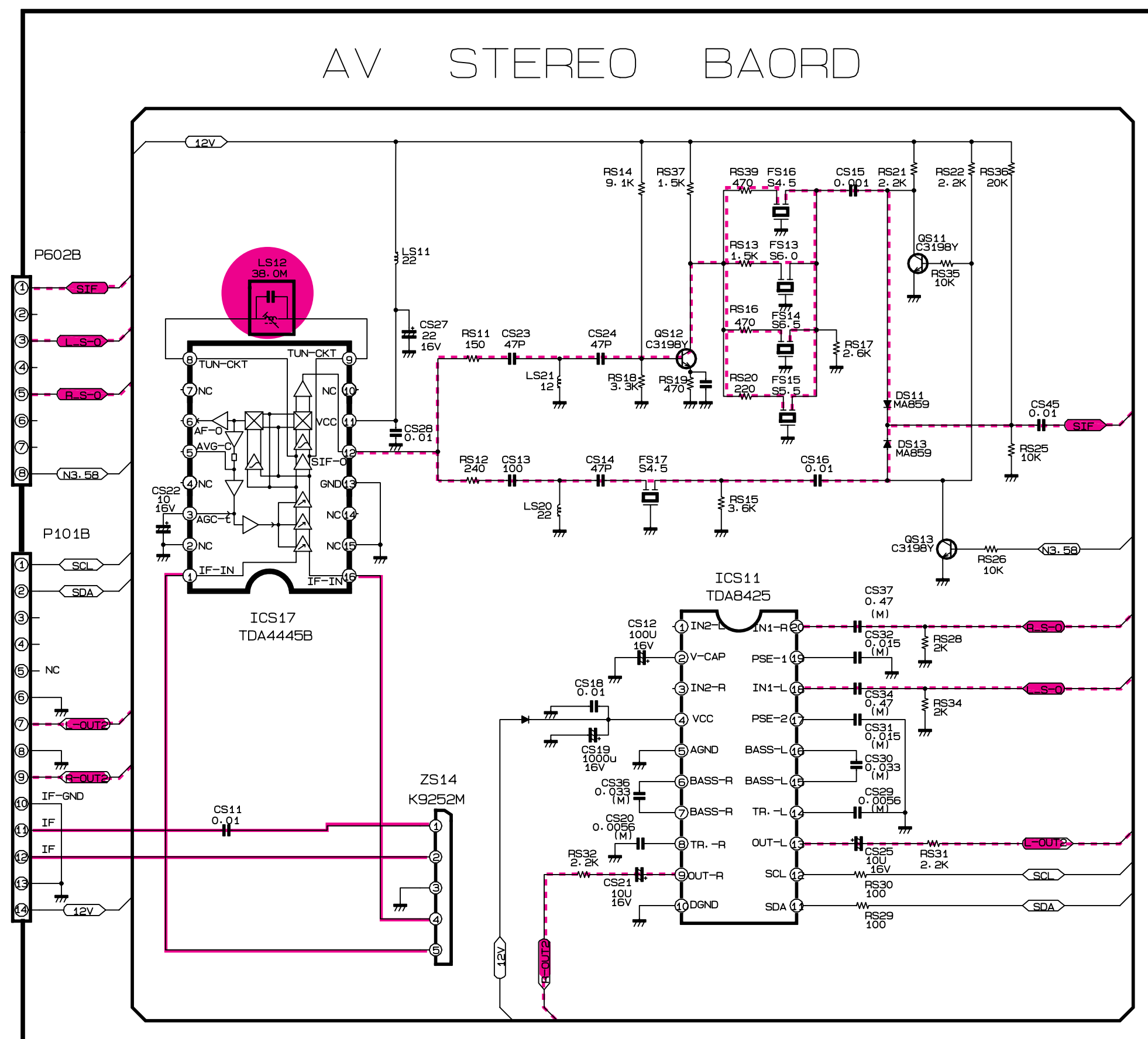
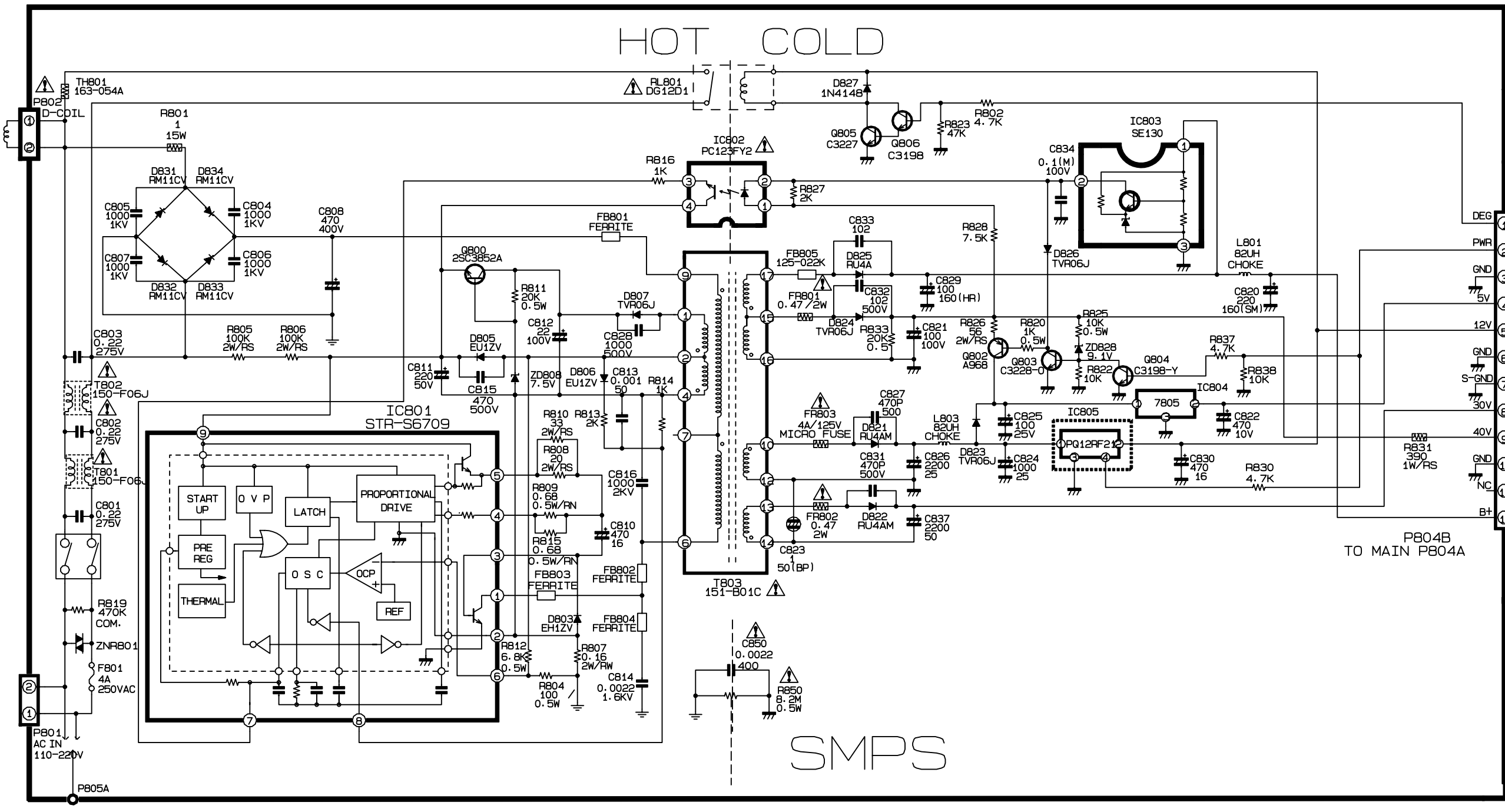
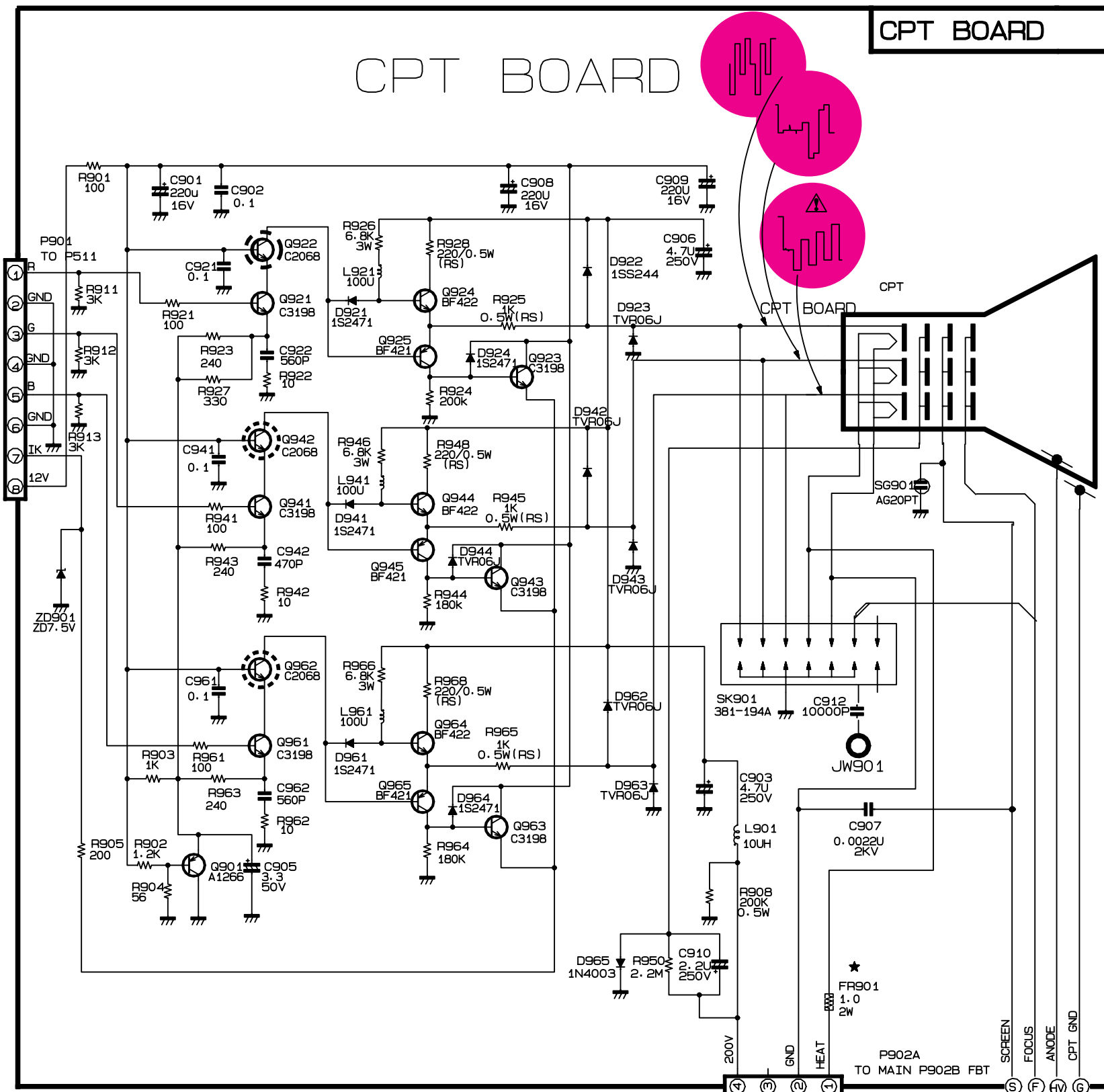
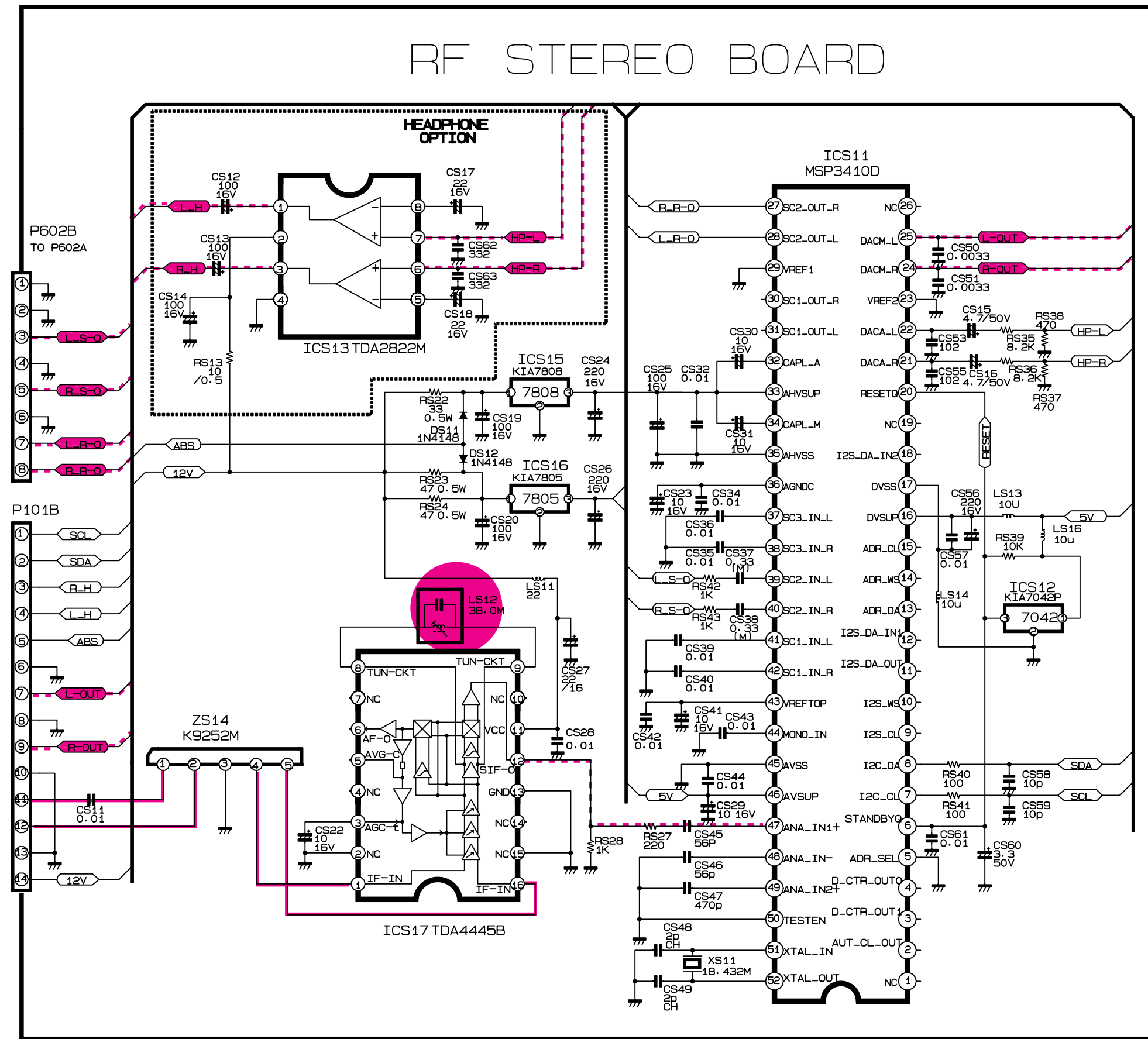
MAIN





Service Sheet of MC-74A (2/2)

PART NO : 3854VA0018A-S2
DATE : Nov 24 '97



CODE	FUNCTION
00	0
01	1
02	2
03	3
04	4
05	5
06	6
07	7
08	8
09	9
0C	POWER
0D	MUTE
0E	PSM
10	VOL
11	VOL
12	EYE
16	SSM
20	PR
21	PR
22	G. VIEW
23	L/TI
24	SURROUND
25	OK
26	HOLD
2A	TIME
2B	SIZE
2C	REVEAL
2E	MIX
32	YELLOW
33	ARC
34	BLUE
35	INDEX
36	GREEN
37	RED
38	TV/AV
3C	MENU
3B	TEXT

NOTICE
Since this is basic circuit diagram. The value of components and some partial connection are subject to change for improvement without notice.

The components marked Δ conform to VDE or IEC guide-lines and are essential for safe operation of the TV receiver. While those marked Δ are required for correct operation. Use specified parts only when replacing.

Observation of voltages and waveforms

- Voltages read with VTVM from point to chassis ground. line voltage is 230V±20% volts. signal pattern is colour-bar.
- The schematic shown is representative only.
- All waveforms are taken using a wide band oscilloscope and a low capacity probe.
- Check FINE TUNING, AGC, CONTRAST, BRIGHTNESS and COLOUR controls for best picture. make sure that COLOUR and BRIGHTNESS are in mid-point and CONTRAST is in 75%.
- Waveforms are taken using a standard colour signal.

★ INCH CONVERSION PARTS

CIP. -NO	25INCH	28INCH	29INCH

Value of resistor, capacitor and inductor

- Resistances are shown in ohm. K=1.000. M=1.000.000.
- Unless otherwise noted in schematic. All capacitor values less than 1 are expressed in mfd and the values more than 1 in pF.
- Unless otherwise noted in schematic. all inductor values more than 1 are expressed in uH and the values less than 1 in Henry(H).

No.	Loc No	C/Part No	Description	Spec	B/Part No
1	F801	0FT4001B517	FUSE, TIME LAG	4A 250V 5.2X20 CY/GL VDE	0FT4001B517
2		700 01GL120104A	IC, LGEC	CDS SENSOR MODULE(P1201-04)	
3	IC524	0IKE780800A	IC, KEC	KIA7808PI 3P(TO-220IS) 1A, 8V	0IKE780800A
4	IC303	0IPH835050A	IC, PHILIPS	TDA8350Q/N5 13P, SIP BK V/DEF+E	
5	IC620	0ISA428200A	IC, SANYO	LA4282(AUDIO-AMP)	0INE182000B
6	IC805	0ISH122100A	IC, SHARP	PQ12RF21 4P(TO-220) 12V S/W RE	0ISH122100A
7	Q402	0TR270800AA	TRANSISTOR	BU2708AF BK PHILIPS	
8	Q401	0TR322900AA	TRANSISTOR	KTC3229	0TR322900AA
9	Q301	0TR988000AC	TRANSISTOR	KTB988-Y, W/A(KTB834), KEC	
10		170 170-844J	CPT EARTH	29" 96T 2LUG 2P HUG	
11		943 1PPF0403116	SCREW, PAN HEAD TAP TITE +	D4 L16 MSWR3/BK	1PPF0403116
12		300 3091V00120D	CABINET ASSY	CF-29K40N HPLRX LG . .	
13		320 320-070G	SPRING	COIL	
14		913 332-229A	SCREW	ASSY, HEXAGON HEAD SP	
15		315 3580V00028B	DOOR	MAIN 1 A/V .	
16		400 3809V00087D	BACK COVER ASSY	29K40 SET 411-960A 2-PHONE	
17		310 5020V00216D	BUTTON	CF-29K40 7227V000016KEY . . .	
18		330 5020V00217D	BUTTON	CF-29K40 7227V000016KEY . . .	
19		150 6140VC2001A	COIL, DEGAUSSING	CU 29" 60TURN 8.7 OHM D05D (NY	
20		112 6341V29002B	BARE CPT ASSY	29", PA2, D/TINT, SOUTH	
21	A2	6710V00007U	REMOTE CONTROLLER	MC-74A(W/O TXT, W/EYE, LG)	
22		520 6871VMM111M	PWB(PCB) ASSY	MAIN 1 74A W/O-RGB 29H30N/K40N	
23		530 6871VPM006B	PWB(PCB) ASSY	74A POWER 29H30	
24		540 6871VSM109B	PWB(PCB) ASSY	SUB 74A W/O HP W/ NI	
25		510 6871VSN044A	PWB(PCB) ASSY	CPT(MC-74A)	
26		120 120-C77G	SPEAKER	C122P02K1459 LG FOSTER 80HM 10	
27		153 6150Z-1043M	DY(DEFLECTION YOKE)	DC29SPPA2	
28	C11	0CE106DK618	CAPACITOR, ELECTROLYTIC	10UF STD 50V M FL TP5	0CE106DK618
29	C12	0CN1010K519	CAPACITOR TUBULA(HIGH DIELE)	100P 50V K B TA52	
30	C13	0CN1010K519	CAPACITOR TUBULA(HIGH DIELE)	100P 50V K B TA52	
31	C14	0CN1010K519	CAPACITOR TUBULA(HIGH DIELE)	100P 50V K B TA52	
32	C15	0CN1010K519	CAPACITOR TUBULA(HIGH DIELE)	100P 50V K B TA52	
33	C16	0CN1010K519	CAPACITOR TUBULA(HIGH DIELE)	100P 50V K B TA52	
34	C17	0CN1010K519	CAPACITOR TUBULA(HIGH DIELE)	100P 50V K B TA52	
35	C18	0CN1010K519	CAPACITOR TUBULA(HIGH DIELE)	100P 50V K B TA52	
36	C19	0CE335DK618	CAPACITOR, ELECTROLYTIC	3.3000UF STD 50V M FL TP5	
37	C20	0CN1020K519	CAPACITOR TUBULA(HIGH DIELE)	1000P 50V K B TA52	
38	C21	0CX1100K409	CAPACITOR TUBULA(T.C)	11P 50V J SL TA52	
39	C21	0CX2400K409	CAPACITOR TUBULA(T.C)	24P 50V J SL TA52	
40	C22	0CX1100K409	CAPACITOR TUBULA(T.C)	11P 50V J SL TA52	
41	C23	0CE476DF618	CAPACITOR, ELECTROLYTIC	47UF STD 16V M FL TP5	0CE476DF618
42	C24	0CE107DF618	CAPACITOR, ELECTROLYTIC	100UF STD 16V M FL TP5	0CE107DF618
43	C25	0CN1030F679	CAPACITOR TUBULA(HIGH DIELE)	0.01MF 16V M Y TA52	
44	C28	0CN1030F679	CAPACITOR TUBULA(HIGH DIELE)	0.01MF 16V M Y TA52	
45	C29	0CQ1842K439	CAPACITOR, POLYESTER(MYLAR)	0.1800UF S 50V J M/PE NI TP	
46	C30	0CX4700K409	CAPACITOR TUBULA(T.C)	47P 50V J SL TA52	
47	C31	0CX4700K409	CAPACITOR TUBULA(T.C)	47P 50V J SL TA52	
48	C32	0CX4700K409	CAPACITOR TUBULA(T.C)	47P 50V J SL TA52	
49	C33	0CX4700K409	CAPACITOR TUBULA(T.C)	47P 50V J SL TA52	
50	C34	0CN1030F679	CAPACITOR TUBULA(HIGH DIELE)	0.01MF 16V M Y TA52	
51	C35	0CX4700K409	CAPACITOR TUBULA(T.C)	47P 50V J SL TA52	
52	C36	0CX4700K409	CAPACITOR TUBULA(T.C)	47P 50V J SL TA52	
53	C68	0CE227DF618	CAPACITOR, ELECTROLYTIC	220UF STD 16V M FL TP5	0CE227DF618
54	C69	0CN2210K519	CAPACITOR TUBULA(HIGH DIELE)	220P 50V K B TA52	
55	C70	0CE476DF618	CAPACITOR, ELECTROLYTIC	47UF STD 16V M FL TP5	0CE476DF618
56	C111	0CE226DF618	CAPACITOR, ELECTROLYTIC	22UF STD 16V M FL TP5	0CE226DF618
57	C112	0CN1030F679	CAPACITOR TUBULA(HIGH DIELE)	0.01MF 16V M Y TA52	
58	C113	0CE106DK618	CAPACITOR, ELECTROLYTIC	10UF STD 50V M FL TP5	0CE106DK618
59	C114	0CN1040K949	CAPACITOR TUBULA(HIGH DIELE)	0.1M 50V Z F TA52	
60	C115	0CE108DF618	CAPACITOR, ELECTROLYTIC	1000UF STD 16V M FL TP5	0CE108DF618
61	C116	0CN1020K519	CAPACITOR TUBULA(HIGH DIELE)	1000P 50V K B TA52	
62	C117	0CN1030F679	CAPACITOR TUBULA(HIGH DIELE)	0.01MF 16V M Y TA52	
63	C118	0CN1030F679	CAPACITOR TUBULA(HIGH DIELE)	0.01MF 16V M Y TA52	
64	C119	0CE225DK618	CAPACITOR, ELECTROLYTIC	2.2000UF STD 50V M FL TP5	0CE225DK618
65	C120	0CQ2242K439	CAPACITOR, POLYESTER(MYLAR)	0.2200UF S 50V J M/PE NI TP	
66	C201	0CE107DF618	CAPACITOR, ELECTROLYTIC	100UF STD 16V M FL TP5	0CE107DF618
67	C202	0CE475DK618	CAPACITOR, ELECTROLYTIC	4.7000UF STD 50V M FL TP5	0CE475DK618
68	C203	0CE475DK618	CAPACITOR, ELECTROLYTIC	4.7000UF STD 50V M FL TP5	0CE475DK618
69	C204	0CE475DK618	CAPACITOR, ELECTROLYTIC	4.7000UF STD 50V M FL TP5	0CE475DK618
70	C205	0CE475DK618	CAPACITOR, ELECTROLYTIC	4.7000UF STD 50V M FL TP5	0CE475DK618
71	C206	0CE475DK618	CAPACITOR, ELECTROLYTIC	4.7000UF STD 50V M FL TP5	0CE475DK618
72	C207	0CE475DK618	CAPACITOR, ELECTROLYTIC	4.7000UF STD 50V M FL TP5	0CE475DK618
73	C208	0CE226DF618	CAPACITOR, ELECTROLYTIC	22UF STD 16V M FL TP5	0CE226DF618
74	C209	0CN1030F679	CAPACITOR TUBULA(HIGH DIELE)	0.01MF 16V M Y TA52	
75	C210	0CE226DF618	CAPACITOR, ELECTROLYTIC	22UF STD 16V M FL TP5	0CE226DF618
76	C211	0CE475DK618	CAPACITOR, ELECTROLYTIC	4.7000UF STD 50V M FL TP5	0CE475DK618
77	C212	0CE475DK618	CAPACITOR, ELECTROLYTIC	4.7000UF STD 50V M FL TP5	0CE475DK618
78	C213	0CE107DF618	CAPACITOR, ELECTROLYTIC	100UF STD 16V M FL TP5	0CE107DF618
79	C214	0CN1030F679	CAPACITOR TUBULA(HIGH DIELE)	0.01MF 16V M Y TA52	
80	C215	0CE226DF618	CAPACITOR, ELECTROLYTIC	22UF STD 16V M FL TP5	0CE226DF618
81	C216	0CN1030F679	CAPACITOR TUBULA(HIGH DIELE)	0.01MF 16V M Y TA52	
82	C217	0CE226DF618	CAPACITOR, ELECTROLYTIC	22UF STD 16V M FL TP5	0CE226DF618
83	C230	0CE337DF618	CAPACITOR, ELECTROLYTIC	330UF STD 16V M FL TP5	
84	C231	0CE475DK618	CAPACITOR, ELECTROLYTIC	4.7000UF STD 50V M FL TP5	0CE475DK618
85	C234	0CE475DK618	CAPACITOR, ELECTROLYTIC	4.7000UF STD 50V M FL TP5	0CE475DK618
86	C261	0CN1030F679	CAPACITOR TUBULA(HIGH DIELE)	0.01MF 16V M Y TA52	
87	C262	0CN1030F679	CAPACITOR TUBULA(HIGH DIELE)	0.01MF 16V M Y TA52	
88	C301	0CE476DN618	C, ELECTROLYTIC	47UF STD 100V M	

89	C302	0CE477DH618	CAPACITOR,ELECTROLYTIC	470UF STD 25V M FL TP5	
90	C303	0CK1040K945	CAPACITOR,CERAMIC(HIGH DIELE)	0.1M 50V Z F TS	
91	C304	0CQ1042K439	CAPACITOR,POLYESTER(MYLAR)	0.1000UF S 50V J M/PE NI TP	
92	C305	0CE6851K652	CAPACITOR,ELECTROLYTIC	6.8000UF SM 50V M FM7.5 BP(S)	
93	C306	0CK2710W515	CAPACITOR CERAMIC(HIGH DIELE)	270P 500V K B TS	
94	C307	0CE477DH618	CAPACITOR,ELECTROLYTIC	470UF STD 25V M FL TP5	
95	C308	0CQ1042K439	CAPACITOR,POLYESTER(MYLAR)	0.1000UF S 50V J M/PE NI TP	
96	C310	0CK1030K945	CAPACITOR,CERAMIC(HIGH DIELE)	0.01M 50V Z F TS	
97	C311	0CQ1041N509	CAPACITOR POLYESTER(MYLAR)	0.1U 100V K POLY TP	
98	C312	0CN5610K519	CAPACITOR TUBULA(HIGH DIELE)	560P 50V K B TA52	
99	C315	0CQ1041N509	CAPACITOR POLYESTER(MYLAR)	0.1U 100V K POLY TP	
100	C316	0CN1020K519	CAPACITOR TUBULA(HIGH DIELE)	1000P 50V K B TA52	
101	C317	0CN1020K519	CAPACITOR TUBULA(HIGH DIELE)	1000P 50V K B TA52	
102	C330	0CQ2731N509	CAPACITOR POLYESTER(MYLAR)	0.027U 100V K POLY TP	
103	C331	181-442Z	C,POLYESTER	0.1MF 50V K	
104	C402	0CE106DN618	CAPACITOR,ELECTROLYTIC	10UF STD 100V M FL TP5	
105	C403	0CK3910K515	CAPACITOR CERAMIC(HIGH DIELE)	390P 50V K B TS	
106	C404	0CQ1021N509	CAPACITOR POLYESTER(MYLAR)	0.001U 100V K POLY TP	
107	C405	181-011B	CAPACITOR	PP 1600V 0.001UF J	
108	C406	0CE106BR618	CAPACITOR,ELECTROLYTIC	10UF KME 250V M FL TP5	
109	C407	0CE476DN618	C,ELECTROLYTIC	47UF STD 100V M	
110	C408	0CE2261R618	CAPACITOR,ELECTROLYTIC	22M SM 250V M TP5	0CE2261R618
111	C409	181-014M	C,MPP	1600V 0.0091UF J	
112	C410	181-014M	C,MPP	1600V 0.0091UF J	
113	C411	181-005J	C,POLYESTER	400V 0.033UF K	
114	C412	0CQ1041N509	CAPACITOR POLYESTER(MYLAR)	0.1U 100V K POLY TP	
115	C413	0CK2710W515	CAPACITOR CERAMIC(HIGH DIELE)	270P 500V K B TS	
116	C414	0CK2710W515	CAPACITOR CERAMIC(HIGH DIELE)	270P 500V K B TS	
117	C416	181-009V	C,PP	200V 0.047UF K	
118	C430	181-038K	CAPACITOR,POLYPROPYLENE	0.56UF D 250V J M/PP FM20	
119	C511	181-442Z	C,POLYESTER	0.1MF 50V K	
120	C512	181-442Z	C,POLYESTER	0.1MF 50V K	
121	C513	0CC2210K415	CAPACITOR CERAMIC(TEMP COMP)	220P 50V J NPO TS	
122	C514	0CC2210K415	CAPACITOR CERAMIC(TEMP COMP)	220P 50V J NPO TS	
123	C515	0CQ4721N509	CAPACITOR POLYESTER(MYLAR)	0.0047U 100V K POLY TP	
124	C516	0CQ1042K439	CAPACITOR,POLYESTER(MYLAR)	0.1000UF S 50V J M/PE NI TP	
125	C517	0CE476DF618	CAPACITOR,ELECTROLYTIC	47UF STD 16V M FL TP5	0CE476DF618
126	C518	0CE107DF618	CAPACITOR,ELECTROLYTIC	100UF STD 16V M FL TP5	0CE107DF618
127	C519	0CN1030F679	CAPACITOR TUBULA(HIGH DIELE)	0.01MF 16V M Y TA52	
128	C520	0CE225DK618	CAPACITOR,ELECTROLYTIC	2.2000UF STD 50V M FL TP5	0CE225DK618
129	C521	0CQ2721N409	CAPACITOR POLYESTER(MYLAR)	0.0027M 100V J POLY TP	
130	C522	0CE105DK618	CAPACITOR,ELECTROLYTIC	1UF STD 50V M FL TP5	0CE105DK618
131	C523	0CQ3321N509	CAPACITOR POLYESTER(MYLAR)	0.0033U 100V K POLY TP	
132	C526	0CN1020K519	CAPACITOR TUBULA(HIGH DIELE)	1000P 50V K B TA52	
133	C527	0CQ1041N455	CAPACITOR,POLYESTER(MYLAR)	0.1000UF 100V J PP NI FM7.5	
134	C528	0CQ2242K439	CAPACITOR,POLYESTER(MYLAR)	0.2200UF S 50V J M/PE NI TP	
135	C529	0CSZVTA001C	C,TANTALUM	TAP105K025BRS(AMMO)25V 1UF K	
136	C530	0CQ2231N509	CAPACITOR POLYESTER(MYLAR)	0.022U 100V K POLY TP	
137	C532	0CQ2242K439	CAPACITOR,POLYESTER(MYLAR)	0.2200UF S 50V J M/PE NI TP	
138	C533	0CE104DK618	CAPACITOR,ELECTROLYTIC	0.1000UF STD 50V M FL TP5	
139	C534	0CN1040K949	CAPACITOR TUBULA(HIGH DIELE)	0.1M 50V Z F TA52	
140	C535	0CN1040K949	CAPACITOR TUBULA(HIGH DIELE)	0.1M 50V Z F TA52	
141	C536	0CN1040K949	CAPACITOR TUBULA(HIGH DIELE)	0.1M 50V Z F TA52	
142	C537	0CN1020K519	CAPACITOR TUBULA(HIGH DIELE)	1000P 50V K B TA52	
143	C538	0CQ2242K439	CAPACITOR,POLYESTER(MYLAR)	0.2200UF S 50V J M/PE NI TP	
144	C539	0CC2210K405	CAPACITOR CERAMIC(TEMP COMP)	220P 50V J SL TP	
145	C540	0CQ1042K439	CAPACITOR,POLYESTER(MYLAR)	0.1000UF S 50V J M/PE NI TP	
146	C541	0CE107DF618	CAPACITOR,ELECTROLYTIC	100UF STD 16V M FL TP5	0CE107DF618
147	C542	0CN2230H949	CAPACITOR TUBULA(HIGH DIELE)	22000P 25V Z FTA52	
148	C545	0CE225DK618	CAPACITOR,ELECTROLYTIC	2.2000UF STD 50V M FL TP5	0CE225DK618
149	C546	0CQ2231N509	CAPACITOR POLYESTER(MYLAR)	0.022U 100V K POLY TP	
150	C547	181-442Z	C,POLYESTER	0.1MF 50V K	
151	C548	0CC0200K115	CAPACITOR CERAMIC(TEMP COMP)	2P 50V D NPO TS	
152	C550	0CQ1042K439	CAPACITOR,POLYESTER(MYLAR)	0.1000UF S 50V J M/PE NI TP	
153	C554	0CE105DK618	CAPACITOR,ELECTROLYTIC	1UF STD 50V M FL TP5	0CE105DK618
154	C560	0CN1030F679	CAPACITOR TUBULA(HIGH DIELE)	0.01MF 16V M Y TA52	
155	C561	0CE476DF618	CAPACITOR,ELECTROLYTIC	47UF STD 16V M FL TP5	0CE476DF618
156	C562	0CN1030F679	CAPACITOR TUBULA(HIGH DIELE)	0.01MF 16V M Y TA52	
157	C563	0CN1030F679	CAPACITOR TUBULA(HIGH DIELE)	0.01MF 16V M Y TA52	
158	C564	0CN1030F679	CAPACITOR TUBULA(HIGH DIELE)	0.01MF 16V M Y TA52	
159	C565	0CE227DF618	CAPACITOR,ELECTROLYTIC	220UF STD 16V M FL TP5	0CE227DF618
160	C567	0CE476DF618	CAPACITOR,ELECTROLYTIC	47UF STD 16V M FL TP5	0CE476DF618
161	C568	0CX1200K409	CAPACITOR TUBULA(T.C)	12P 50V J SL TA52	
162	C569	0CE476DF618	CAPACITOR,ELECTROLYTIC	47UF STD 16V M FL TP5	0CE476DF618
163	C590	0CE476DF618	CAPACITOR,ELECTROLYTIC	47UF STD 16V M FL TP5	0CE476DF618
164	C591	0CN1030F679	CAPACITOR TUBULA(HIGH DIELE)	0.01MF 16V M Y TA52	
165	C592	0CQ1042K439	CAPACITOR,POLYESTER(MYLAR)	0.1000UF S 50V J M/PE NI TP	
166	C593	0CQ2242K439	CAPACITOR,POLYESTER(MYLAR)	0.2200UF S 50V J M/PE NI TP	
167	C594	0CE476DF618	CAPACITOR,ELECTROLYTIC	47UF STD 16V M FL TP5	0CE476DF618
168	C595	0CN2230H949	CAPACITOR TUBULA(HIGH DIELE)	22000P 25V Z FTA52	
169	C596	0CQ1021N509	CAPACITOR POLYESTER(MYLAR)	0.001U 100V K POLY TP	
170	C597	0CQ1021N509	CAPACITOR POLYESTER(MYLAR)	0.001U 100V K POLY TP	
171	C598	0CN2230H949	CAPACITOR TUBULA(HIGH DIELE)	22000P 25V Z FTA52	
172	C620	0CE107DH618	CAPACITOR,ELECTROLYTIC	100UF STD 25V M FL TP5	
173	C621	0CN2220F669	CAPACITOR TUBULA(HIGH DIELE)	2200P 16V M X TA52	
174	C622	0CE107DH618	CAPACITOR,ELECTROLYTIC	100UF STD 25V M FL TP5	
175	C623	0CE2251K636	CAPACITOR,ELECTROLYTIC	2.2000UF SM 50V M FM5 BP(D) TP	
176	C624	0CN2220F669	CAPACITOR TUBULA(HIGH DIELE)	2200P 16V M X TA52	
177	C625	0CE107DH618	CAPACITOR,ELECTROLYTIC	100UF STD 25V M FL TP5	
178	C626	181-442Z	C,POLYESTER	0.1MF 50V K	

179	C627	0CE2251K636	CAPACITOR,ELECTROLYTIC	2.2000UF SM 50V M FM5 BP(D) TP	
180	C628	0CE106DK618	CAPACITOR,ELECTROLYTIC	10UF STD 50V M FL TP5	OCE106DK618
181	C629	0CE228DJ650	CAPACITOR,ELECTROLYTIC	2200UF STD 35V M FM7.5 BULK	
182	C630	0CK1030K945	CAPACITOR,CERAMIC(HIGH DIELE)	0.01M 50V Z F TS	
183	C631	181-442Z	C,POLYESTER	0.1MF 50V K	
184	C632	0CE108DH618	CAPACITOR,ELECTROLYTIC	1000UF STD 25V M FL TP5	
185	C633	0CE108DH618	CAPACITOR,ELECTROLYTIC	1000UF STD 25V M FL TP5	
186	C801	0CQZVBK002C	CAPACITOR,POLYESTER	A.C 275V 0.22UF K (S	
187	C802	0CQZVBK002C	CAPACITOR,POLYESTER	A.C 275V 0.22UF K (S	
188	C804	181-091D	C,DE0905	R 102K 1KV	
189	C805	181-091D	C,DE0905	R 102K 1KV	
190	C806	181-091D	C,DE0905	R 102K 1KV	
191	C807	181-091D	C,DE0905	R 102K 1KV	
192	C808	181-001U	CAPACITOR	CE 450V 470UF M LUG(85)	
193	C810	0CE477DF618	CAPACITOR,ELECTROLYTIC	470UF STD 16V M FL TP5	
194	C811	0CE227DJ618	CAPACITOR,ELECTROLYTIC	220UF STD 35V M FL TP5	
195	C812	0CE226DN618	CAPACITOR,ELECTROLYTIC	22UF STD 100V M FL TP5	
196	C813	0CK1020K515	CAPACITOR,CERAMIC(HIGH DIELE)	1000P 50V K B TS	
197	C814	181-011D	C,PP	1600V 0.0022UF J	
198	C815	0CK4710W515	CAPACITOR CERAMIC(HIGH DIELE)	470P 500V K B TS	
199	C816	181-091D	C,DE0905	R 102K 1KV	
200	C820	0CE2271P640	CAPACITOR,ELECTROLYTIC	220M SM 160V M FM10	
201	C821	0CE107DN618	CAPACITOR,ELECTROLYTIC	100UF STD 100V M FL TP5	
202	C822	0CE477DD618	CAPACITOR,ELECTROLYTIC	470UF STD 10V M FL TP5	
203	C823	0CE1051K636	CAPACITOR,ELECTROLYTIC	1.0U SM 50V M FM5 BP TP(D)	
204	C825	0CE107DH618	CAPACITOR,ELECTROLYTIC	100UF STD 25V M FL TP5	
205	C826	0CE228DH610	CAPACITOR,ELECTROLYTIC	2200UF STD 25V M FL BUL	
206	C827	0CK4710W515	CAPACITOR CERAMIC(HIGH DIELE)	470P 500V K B TS	
207	C828	0CK1020W515	CAPACITOR,CERAMIC(HIGH DIELE)	1000P 500V K B TS	
208	C829	181-003D	C,ELECTROLYTIC	160V 100UF T HR	
209	C830	0CE477DF618	CAPACITOR,ELECTROLYTIC	470UF STD 16V M FL TP5	
210	C831	0CK4710W515	CAPACITOR CERAMIC(HIGH DIELE)	470P 500V K B TS	
211	C832	181-091D	C,DE0905	R 102K 1KV	
212	C833	181-091D	C,DE0905	R 102K 1KV	
213	C834	0CQ1041N509	CAPACITOR POLYESTER(MYLAR)	0.1U 100V K POLY TP	
214	C837	0CE228DK650	CAPACITOR,ELECTROLYTIC	2200UF STD 50V M FM7.5 BULK	
215	C838	0CQZVBK002A	CAPACITOR,POLYESTER	A.C 275V 0.1UF M (S=15)	
216	C850	181-120E	C,ACT	4KV E 222M FL10	
217	C901	0CE227DF618	CAPACITOR,ELECTROLYTIC	220UF STD 16V M FL TP5	OCE227DF618
218	C902	0CK1040K945	CAPACITOR,CERAMIC(HIGH DIELE)	0.1M 50V Z F TS	
219	C903	0CE475DR618	CAPACITOR,ELECTROLYTIC	4.7000UF STD 250V M FL TP5	
220	C905	0CE335DK618	CAPACITOR,ELECTROLYTIC	3.3000UF STD 50V M FL TP5	
221	C906	0CE475DR618	CAPACITOR,ELECTROLYTIC	4.7000UF STD 250V M FL TP5	
222	C907	181-033T	CAPACITOR	2KV B 222K TP7.5	
223	C908	0CE227DF618	CAPACITOR,ELECTROLYTIC	220UF STD 16V M FL TP5	OCE227DF618
224	C909	0CE227DF618	CAPACITOR,ELECTROLYTIC	220UF STD 16V M FL TP5	OCE227DF618
225	C910	0CE225DR618	C,ELECTROLYTIC	2.2UF STD 250V M	
226	C912	0CN1030F679	CAPACITOR TUBULA(HIGH DIELE)	0.01MF 16V M Y TA52	
227	C921	0CK1040K945	CAPACITOR,CERAMIC(HIGH DIELE)	0.1M 50V Z F TS	
228	C922	0CN5610K519	CAPACITOR TUBULA(HIGH DIELE)	560P 50V K B TA52	
229	C924	0CC2700K415	CAPACITOR CERAMIC(TEMP COMP)	27P 50V J NP0 TP	
230	C941	0CK1040K945	CAPACITOR,CERAMIC(HIGH DIELE)	0.1M 50V Z F TS	
231	C942	0CN4710K519	CAPACITOR TUBULA(HIGH DIELE)	470P 50V K B TA52	
232	C944	0CC2700K415	CAPACITOR CERAMIC(TEMP COMP)	27P 50V J NP0 TP	
233	C961	0CK1040K945	CAPACITOR,CERAMIC(HIGH DIELE)	0.1M 50V Z F TS	
234	C962	0CN5610K519	CAPACITOR TUBULA(HIGH DIELE)	560P 50V K B TA52	
235	C964	0CC2700K415	CAPACITOR CERAMIC(TEMP COMP)	27P 50V J NP0 TP	
236	CS11	0CN1030F679	CAPACITOR TUBULA(HIGH DIELE)	0.01MF 16V M Y TA52	
237	CS19	0CE107DF618	CAPACITOR,ELECTROLYTIC	100UF STD 16V M FL TP5	OCE107DF618
238	CS20	0CE107DF618	CAPACITOR,ELECTROLYTIC	100UF STD 16V M FL TP5	OCE107DF618
239	CS22	0CE106DK618	CAPACITOR,ELECTROLYTIC	10UF STD 50V M FL TP5	OCE106DK618
240	CS23	0CE106DK618	CAPACITOR,ELECTROLYTIC	10UF STD 50V M FL TP5	OCE106DK618
241	CS24	0CE227DF618	CAPACITOR,ELECTROLYTIC	220UF STD 16V M FL TP5	OCE227DF618
242	CS25	0CE107DF618	CAPACITOR,ELECTROLYTIC	100UF STD 16V M FL TP5	OCE107DF618
243	CS26	0CE227DF618	CAPACITOR,ELECTROLYTIC	220UF STD 16V M FL TP5	OCE227DF618
244	CS27	0CE2263F618	C,ELECTROLYTIC	22UF 16V M	
245	CS28	0CN1030F679	CAPACITOR TUBULA(HIGH DIELE)	0.01MF 16V M Y TA52	
246	CS29	0CE106DK618	CAPACITOR,ELECTROLYTIC	10UF STD 50V M FL TP5	OCE106DK618
247	CS30	0CE106DK618	CAPACITOR,ELECTROLYTIC	10UF STD 50V M FL TP5	OCE106DK618
248	CS31	0CE106DK618	CAPACITOR,ELECTROLYTIC	10UF STD 50V M FL TP5	OCE106DK618
249	CS32	0CN1030F679	CAPACITOR TUBULA(HIGH DIELE)	0.01MF 16V M Y TA52	
250	CS34	0CN1030F679	CAPACITOR TUBULA(HIGH DIELE)	0.01MF 16V M Y TA52	
251	CS35	0CN1030F679	CAPACITOR TUBULA(HIGH DIELE)	0.01MF 16V M Y TA52	
252	CS36	0CN1030F679	CAPACITOR TUBULA(HIGH DIELE)	0.01MF 16V M Y TA52	
253	CS37	0CQ3342K439	CAPACITOR,POLYESTER(MYLAR)	0.3300UF S 50V J M/PE NI TP	
254	CS38	0CQ3342K439	CAPACITOR,POLYESTER(MYLAR)	0.3300UF S 50V J M/PE NI TP	
255	CS39	0CN1030F679	CAPACITOR TUBULA(HIGH DIELE)	0.01MF 16V M Y TA52	
256	CS40	0CN1030F679	CAPACITOR TUBULA(HIGH DIELE)	0.01MF 16V M Y TA52	
257	CS41	0CE106DK618	CAPACITOR,ELECTROLYTIC	10UF STD 50V M FL TP5	OCE106DK618
258	CS42	0CN1030F679	CAPACITOR TUBULA(HIGH DIELE)	0.01MF 16V M Y TA52	
259	CS43	0CN1030F679	CAPACITOR TUBULA(HIGH DIELE)	0.01MF 16V M Y TA52	
260	CS44	0CN1030F679	CAPACITOR TUBULA(HIGH DIELE)	0.01MF 16V M Y TA52	
261	CS45	0CX5600K409	CAPACITOR TUBULA(T.C)	56P 50V J SL TA52	
262	CS46	0CX5600K409	CAPACITOR TUBULA(T.C)	56P 50V J SL TA52	
263	CS47	0CN4710K519	CAPACITOR TUBULA(HIGH DIELE)	470P 50V K B TA52	
264	CS48	0CC0200K115	CAPACITOR CERAMIC(TEMP COMP)	2P 50V D NP0 TS	
265	CS49	0CC0200K115	CAPACITOR CERAMIC(TEMP COMP)	2P 50V D NP0 TS	
266	CS50	0CN3320F569	CAPACITOR TUBULA(HIGH DIELE)	3300P 16V K X TA52	
267	CS51	0CN3320F569	CAPACITOR TUBULA(HIGH DIELE)	3300P 16V K X TA52	
268	CS56	0CE227DF618	CAPACITOR,ELECTROLYTIC	220UF STD 16V M FL TP5	OCE227DF618

269	CS57	OCN1030F679	CAPACITOR TUBULA(HIGH DIELE)	0.01MF 16V M Y TA52	
270	CS58	OCX1000K409	CAPACITOR TUBULA(T.C)	10P 50V J SL TA52	
271	CS59	OCX1000K409	CAPACITOR TUBULA(T.C)	10P 50V J SL TA52	
272	CS60	0CE335DK618	CAPACITOR,ELECTROLYTIC	3.3000UF STD 50V M FL TP5	
273	CS61	OCN1030F679	CAPACITOR TUBULA(HIGH DIELE)	0.01MF 16V M Y TA52	
274	D11	0DD414809ED	DIODE	(DS4148) TA	0DD414809ED
275	D14	0DD414809ED	DIODE	(DS4148) TA	0DD414809ED
276	D15	0DD414809ED	DIODE	(DS4148) TA	0DD414809ED
277	D68	0DD414809ED	DIODE	(DS4148) TA	0DD414809ED
278	D69	0DD414809ED	DIODE	(DS4148) TA	0DD414809ED
279	D88	162-002B	DIODE	LED ASSY (MC51A,M-8.9)	
280	D115	0DD414809ED	DIODE	(DS4148) TA	0DD414809ED
281	D116	0DD859009AA	DIODE	SILICON MA859 TAPING	
282	D117	0DD859009AA	DIODE	SILICON MA859 TAPING	
283	D301	0DD414809ED	DIODE	(DS4148) TA	0DD414809ED
284	D302	0DD414809ED	DIODE	(DS4148) TA	0DD414809ED
285	D305	0DD414809ED	DIODE	(DS4148) TA	0DD414809ED
286	D306	0DD414809ED	DIODE	(DS4148) TA	0DD414809ED
287	D307	0DD150009CA	DIODE	RGP15J TA	0DD150009CA
288	D401	0DD414809ED	DIODE	(DS4148) TA	0DD414809ED
289	D402	0DD414809ED	DIODE	(DS4148) TA	0DD414809ED
290	D403	0DD410000AC	DIODE	RU4DS,LF-L1 SANKEN SANKEN	0DD410000AC
291	D404	0DD410000AD	DIODE	RU4AM,LF-L1 SANKEN SANKEN	0DD410000AD
292	D406	0DD060009AC	DIODE	TVR06J 0.6A/600V 250NS TP G.I	0DD060009AC
293	D407	0DD060009AC	DIODE	TVR06J 0.6A/600V 250NS TP G.I	0DD060009AC
294	D408	0DD400509AA	DIODE	1N4005 GP TA	0DD400509AA
295	D430	0DD150009CA	DIODE	RGP15J TA	0DD150009CA
296	D513	0DD414809ED	DIODE	(DS4148) TA	0DD414809ED
297	D516	0DD414809ED	DIODE	(DS4148) TA	0DD414809ED
298	D518	0DD414809ED	DIODE	(DS4148) TA	0DD414809ED
299	D519	0DD414809ED	DIODE	(DS4148) TA	0DD414809ED
300	D601	0DD470009AA	DIODE SCMOTTKY	BAT 47 TP	
301	D602	0DD470009AA	DIODE SCMOTTKY	BAT 47 TP	
302	D803	0DD100009AL	DIODE	EH-12V	0DD100009AL
303	D805	0DD100009AM	DIODE	EU12V,TP(52MM),SANKE	0DD100009AM
304	D806	0DD100009AM	DIODE	EU12V,TP(52MM),SANKE	0DD100009AM
305	D807	0DD060009AC	DIODE	TVR06J 0.6A/600V 250NS TP G.I	0DD060009AC
306	D821	0DD410000AD	DIODE	RU4AM,LF-L1 SANKEN SANKEN	0DD410000AD
307	D822	0DD410000AD	DIODE	RU4AM,LF-L1 SANKEN SANKEN	0DD410000AD
308	D823	0DD060009AC	DIODE	TVR06J 0.6A/600V 250NS TP G.I	0DD060009AC
309	D824	0DD060009AC	DIODE	TVR06J 0.6A/600V 250NS TP G.I	0DD060009AC
310	D825	0DD410000AD	DIODE	RU4AM,LF-L1 SANKEN SANKEN	0DD410000AD
311	D826	0DD060009AC	DIODE	TVR06J 0.6A/600V 250NS TP G.I	0DD060009AC
312	D827	0DD414809ED	DIODE	(DS4148) TA	0DD414809ED
313	D831	0DD110009DB	DIODE	RM11CV 1.2A/1000V 10	0DD110009DB
314	D832	0DD110009DB	DIODE	RM11CV 1.2A/1000V 10	0DD110009DB
315	D833	0DD110009DB	DIODE	RM11CV 1.2A/1000V 10	0DD110009DB
316	D834	0DD110009DB	DIODE	RM11CV 1.2A/1000V 10	0DD110009DB
317	D921	0DD247109AA	DIODE	1S2471DETECT,SW(26MM)TP ROHM	
318	D922	0DD400509AA	DIODE	1N4005 GP TA	0DD400509AA
319	D923	0DD400509AA	DIODE	1N4005 GP TA	0DD400509AA
320	D924	0DD247109AA	DIODE	1S2471DETECT,SW(26MM)TP ROHM	
321	D941	0DD247109AA	DIODE	1S2471DETECT,SW(26MM)TP ROHM	
322	D942	0DD400509AA	DIODE	1N4005 GP TA	0DD400509AA
323	D943	0DD400509AA	DIODE	1N4005 GP TA	0DD400509AA
324	D944	0DD247109AA	DIODE	1S2471DETECT,SW(26MM)TP ROHM	
325	D961	0DD247109AA	DIODE	1S2471DETECT,SW(26MM)TP ROHM	
326	D962	0DD400509AA	DIODE	1N4005 GP TA	0DD400509AA
327	D963	0DD400509AA	DIODE	1N4005 GP TA	0DD400509AA
328	D964	0DD247109AA	DIODE	1S2471DETECT,SW(26MM)TP ROHM	
329	D965	0DD400309AD	DIODE	IN4003A RECT K-ROHM TP	0DD400309AD
330	DS11	0DD414809ED	DIODE	(DS4148) TA	0DD414809ED
331	DS12	0DD414809ED	DIODE	(DS4148) TA	0DD414809ED
332	FB308	125-022K	CORE	FERRITE 1UH TAPING	125-022K
333	FB405	125-022K	CORE	FERRITE 1UH TAPING	125-022K
334	FB801	125-022K	CORE	FERRITE 1UH TAPING	125-022K
335	FB802	125-022K	CORE	FERRITE 1UH TAPING	125-022K
336	FB803	125-123A	CORE	FERRITE BFD3565R2F(TAPING)	125-123A
337	FB804	125-022K	CORE	FERRITE 1UH TAPING	125-022K
338	FB805	125-022K	CORE	FERRITE 1UH TAPING	125-022K
339	FR304	180-D02C	R,RNF RND(S) EQ	2W 0.47 J	
340	FR311	0RF0102H609	RESISTOR FUSIBLE	10 1/2W 5 TA52	0RF0102H609
341	FR410	180-D02E	R,RNF RND(S) CR	2W 1.0 J	
342	FR412	0RF0470H609	RESISTOR FUSIBLE	0.47 1/2W 5 TA52	0RF0470H609
343	FR413	0RF0470J607	RESISTOR,FUSIBLE	0.47 1W 5% TA62	0RF0470J607
344	FR414	0RF0470J607	RESISTOR,FUSIBLE	0.47 1W 5% TA62	0RF0470J607
345	FR416	0RF0470J607	RESISTOR,FUSIBLE	0.47 1W 5% TA62	0RF0470J607
346	FR628	180-D02C	R,RNF RND(S) EQ	2W 0.47 J	
347	FR801	180-D02C	R,RNF RND(S) EQ	2W 0.47 J	
348	FR802	180-D02C	R,RNF RND(S) EQ	2W 0.47 J	
349	FR803	131-096E	FUSE	MICRO 125V 4.0A	
350	FR901	180-D02E	R,RNF RND(S) CR	2W 1.0 J	
351	ICS11	0IIT341000H	IC,ITT	MSP3410D 52P,SDIP BK B4-VERSIO	
352	IC11	0ISS754200A	IC,SAMSUNG ELECTRONI	KA7542Z RESET TO92 T	
353	IC12	0ISO873805C	IC,SONY	LG8738-05C(CXP86441-509S) 52SD	
354	ICS12	0ISS754200A	IC,SAMSUNG ELECTRONI	KA7542Z RESET TO92 T	
355	ICS15	0IKE780800A	IC,KEC	KIA7808PI 3P(TO-220IS) 1A,8V	0IKE780800A
356	ICS16	0IKE780500K	IC,KEC	KIA7805PI 3P(TO-220IS) 5V,1A	0IKE780500K
357	ICS17	0ITF444500C	IC,TELEFUNKEN	TDA4445B 16P,DIP BK QPS PROCES	
358	IC20	0IAL240800A	IC, ATMEL	AT24C08-10PC 8D EEPROM(8K,IIC)	

359 IC201	0IGS381200A	IC, GOLDSTAR ELECTRON	GL3812(HA11518)	0IGS381200A
360 IC511	0IMA586000A	IC,MATSUSHITA	AN5860 14D ANALOG RG	0IMA586000A
361 IC512	0IPH837500A	IC,PHILIPS	TDA8375 56P,SDIP BK VCD&W/IF 1	
362 IC590	0IPH839530A	IC,PHILIPS	TDA8395P/N3 16DIP BK SECAM DET	
363 IC591	0IPH466550A	IC,PHILIPS	TDA4665/V5 16DIP BK 1H DELAY L	
364 IC801	0ISK670900A	IC,SANKEN	STR/S6709 9S SMPS-CNTR	0ISK670900A
365 IC802	0ISH123200B	IC,SHARP	PC123 FY2PHOTO COUPLER	
366 IC803	0ISK130000A	IC,SANKEN	SE130N 3P 130V ERROR AMP	
367 IC804	0IKE780500K	IC,KEC	KIA7805PI 3P(TO-220IS) 5V,1A	0IKE780500K
368 L11	0LA0561K119	INDUCTOR AXIAL LEAD	5.6UH K 2.3*3.4 TP	
369 L12	0LA0681K119	INDUCTOR AXIAL LEAD	6.8UH K 2.3*3.4 TP	
370 L12	0LA0821K119	INDUCTOR AXIAL LEAD	8.2UH K 2.3*3.4 TP	
371 L111	0LA0102K119	INDUCTOR AXIAL LEAD	10UH K 2.3*3.4 TP	
372 L115	0LA0222K119	INDUCTOR AXIAL LEAD	22UH K 2.3*3.4 TP	
373 L261	0RD0101F609	RESISTOR,FIXED CARBON FILM	1.0 1/6W 5 TA52	
374 L262	0RD0101F609	RESISTOR,FIXED CARBON FILM	1.0 1/6W 5 TA52	
375 L301	150-717J	COIL	CHOKO 560UH (E/W)	
376 L302	150-C02V	COIL	CHOKO 10UH R 1318	
377 L401	150-L02X	COIL,LINEARITY	15UH 0.12PHY 43.5TURN 14X15 .	
378 L402	0LA0102K139	INDUCTOR AXIAL LEAD	10UH K 4*10.5 TP	0LA0102K139
379 L511	0LA0681K119	INDUCTOR AXIAL LEAD	6.8UH K 2.3*3.4 TP	
380 L512	0LA0821K119	INDUCTOR AXIAL LEAD	8.2UH K 2.3*3.4 TP	
381 L513	0LA0102K119	INDUCTOR AXIAL LEAD	10UH K 2.3*3.4 TP	
382 L514	0LA0102K119	INDUCTOR AXIAL LEAD	10UH K 2.3*3.4 TP	
383 L518	150-E11K	COIL,IFT	VAR,07S 1C 38.0MHZ	
384 L590	0LA0102K119	INDUCTOR AXIAL LEAD	10UH K 2.3*3.4 TP	
385 L801	150-C02F	COIL	CHOKO 82UH R1217	150-C02F
386 L901	0LA0102K139	INDUCTOR AXIAL LEAD	10UH K 4*10.5 TP	0LA0102K139
387 L921	0LA1000K139	INDUCTOR AXIAL LEAD	100UH K 4*10.5 TP	
388 L941	0LA1000K139	INDUCTOR AXIAL LEAD	100UH K 4*10.5 TP	
389 L961	0LA1000K139	INDUCTOR AXIAL LEAD	100UH K 4*10.5 TP	
390 LS11	0LA0222K119	INDUCTOR AXIAL LEAD	22UH K 2.3*3.4 TP	
391 LS12	150-E08L	COIL	VAR,07S 1B 38.0MHZ	
392 LS13	0LA0102K119	INDUCTOR AXIAL LEAD	10UH K 2.3*3.4 TP	
393 LS14	0LA0102K119	INDUCTOR AXIAL LEAD	10UH K 2.3*3.4 TP	
394 LS15	0LA0102K119	INDUCTOR AXIAL LEAD	10UH K 2.3*3.4 TP	
395 LS16	0LA0102K119	INDUCTOR AXIAL LEAD	10UH K 2.3*3.4 TP	
396 P804B	387-A15A	CONNECTOR ASSY	ASSY,12P(L=100)	
397 P901B	387-B08H	CONNECTOR ASSY	8P SHIELD(450)IL-J TO IL-G	
398 P902B	387-A04G	CONNECTOR ASSY	ASSY,4P (L=400)	
399 PA11	106-047G	PRE-AMP	SBX2020-82 SONY 38.0KHZ MESH	
400 PJ230	380-392A	JACK	A/V IN-OUT(6P)	
401 FJ261	6613V00004B	JACK ASSY	3P	
402 Q11	0TR102009AB	TRANSISTOR	KRC102M,TP(KRC1202),KEC	0TR102009AB
403 Q12	0TR319809AA	TRANSISTOR	KTC3198-TP-Y (KTC1815)KEC	
404 Q13	0TR319809AA	TRANSISTOR	KTC3198-TP-Y (KTC1815)KEC	
405 Q17	0TR319809AA	TRANSISTOR	KTC3198-TP-Y (KTC1815)KEC	
406 Q68	0TR126609AA	TRANSISTOR	KTA1266-TP-Y (KTA1015) KEC	
407 Q111	0TR102009AB	TRANSISTOR	KRC102M,TP(KRC1202),KEC	0TR102009AB
408 Q112	0TR319809AA	TRANSISTOR	KTC3198-TP-Y (KTC1815)KEC	
409 Q201	0TR319809AA	TRANSISTOR	KTC3198-TP-Y (KTC1815)KEC	
410 Q401	0TR322900AA	TRANSISTOR	KTC3229	0TR322900AA
411 Q511	0TR319809AA	TRANSISTOR	KTC3198-TP-Y (KTC1815)KEC	
412 Q512	0TR319809AA	TRANSISTOR	KTC3198-TP-Y (KTC1815)KEC	
413 Q513	0TR102009AB	TRANSISTOR	KRC102M,TP(KRC1202),KEC	0TR102009AB
414 Q517	0TR126609AA	TRANSISTOR	KTA1266-TP-Y (KTA1015) KEC	
415 Q518	0TR319809AA	TRANSISTOR	KTC3198-TP-Y (KTC1815)KEC	
416 Q519	0TR126609AA	TRANSISTOR	KTA1266-TP-Y (KTA1015) KEC	
417 Q520	0TR319809AA	TRANSISTOR	KTC3198-TP-Y (KTC1815)KEC	
418 Q522	0TR319809AA	TRANSISTOR	KTC3198-TP-Y (KTC1815)KEC	
419 Q525	0TR126609AA	TRANSISTOR	KTA1266-TP-Y (KTA1015) KEC	
420 Q800	0TR385200AA	TRANSISTOR	2SC3852A SANKEN	0TR385200AA
421 Q802	0TR968000AA	TRANSISTOR	KTA968A-Y KEC	0TR508000EA
422 Q803	0TR322809AA	TRANSISTOR	KTC3228-0 TP(KTC2383),KEC	0TR322809AA
423 Q804	0TR319809AA	TRANSISTOR	KTC3198-TP-Y (KTC1815)KEC	
424 Q805	0TR322709AA	TRANSISTOR	KTC3227-Y,TP(KTC1627A),KEC	0TR322709AA
425 Q806	0TR319809AA	TRANSISTOR	KTC3198-TP-Y (KTC1815)KEC	
426 Q901	0TR126609AA	TRANSISTOR	KTA1266-TP-Y (KTA1015) KEC	
427 Q921	0TR319809AA	TRANSISTOR	KTC3198-TP-Y (KTC1815)KEC	
428 Q923	0TR319809AA	TRANSISTOR	KTC3198-TP-Y (KTC1815)KEC	
429 Q924	0TR422009CB	TRANSISTOR	BF422L(AMMO)TO-92 TP PHILIPS	
430 Q925	0TR421009CB	TRANSISTOR	BF421L(AMMO)TO-92 TP PHILIPS	
431 Q941	0TR319809AA	TRANSISTOR	KTC3198-TP-Y (KTC1815)KEC	
432 Q943	0TR319809AA	TRANSISTOR	KTC3198-TP-Y (KTC1815)KEC	
433 Q944	0TR422009CB	TRANSISTOR	BF422L(AMMO)TO-92 TP PHILIPS	
434 Q945	0TR421009CB	TRANSISTOR	BF421L(AMMO)TO-92 TP PHILIPS	
435 Q961	0TR319809AA	TRANSISTOR	KTC3198-TP-Y (KTC1815)KEC	
436 Q963	0TR319809AA	TRANSISTOR	KTC3198-TP-Y (KTC1815)KEC	
437 Q964	0TR422009CB	TRANSISTOR	BF422L(AMMO)TO-92 TP PHILIPS	
438 Q965	0TR421009CB	TRANSISTOR	BF421L(AMMO)TO-92 TP PHILIPS	
439 QT75	0TR319809AA	TRANSISTOR	KTC3198-TP-Y (KTC1815)KEC	
440 QT76	0TR319809AA	TRANSISTOR	KTC3198-TP-Y (KTC1815)KEC	
441 QT77	0TR319809AA	TRANSISTOR	KTC3198-TP-Y (KTC1815)KEC	
442 R11	0RD3300F609	RESISTOR,FIXED CARBON FILM	330 1/6W 5 TA52	
443 R12	0RD1001F609	RESISTOR,FIXED CARBON FILM	1.0K 1/6W 5 TA52	
444 R13	0RD4701F609	RESISTOR,FIXED CARBON FILM	4.7K 1/6W 5 TA52	
445 R14	0RD1000F609	RESISTOR,FIXED CARBON FILM	100 1/6W 5 TA52	0RD1000F609
446 R15	0RD4701F609	RESISTOR,FIXED CARBON FILM	4.7K 1/6W 5 TA52	
447 R16	0RD1000F609	RESISTOR,FIXED CARBON FILM	100 1/6W 5 TA52	0RD1000F609
448 R17	0RD4701F609	RESISTOR,FIXED CARBON FILM	4.7K 1/6W 5 TA52	

449 R18	ORD1000F609	RESISTOR, FIXED CARBON FILM	100 1/6W 5 TA52	ORD1000F609
450 R19	ORD4701F609	RESISTOR, FIXED CARBON FILM	4.7K 1/6W 5 TA52	
451 R20	ORD1000F609	RESISTOR, FIXED CARBON FILM	100 1/6W 5 TA52	ORD1000F609
452 R21	ORD4701F609	RESISTOR, FIXED CARBON FILM	4.7K 1/6W 5 TA52	
453 R22	ORD1000F609	RESISTOR, FIXED CARBON FILM	100 1/6W 5 TA52	ORD1000F609
454 R23	ORD4701F609	RESISTOR, FIXED CARBON FILM	4.7K 1/6W 5 TA52	
455 R24	ORD1000F609	RESISTOR, FIXED CARBON FILM	100 1/6W 5 TA52	ORD1000F609
456 R25	ORD3901F609	RESISTOR, FIXED CARBON FILM	3.9K 1/6W 5 TA52	
457 R26	ORD4701F609	RESISTOR, FIXED CARBON FILM	4.7K 1/6W 5 TA52	
458 R27	ORD1002F609	RESISTOR, FIXED CARBON FILM	10K 1/6W 5 TA52	ORD1002F609
459 R28	ORD4701F609	RESISTOR, FIXED CARBON FILM	4.7K 1/6W 5 TA52	
460 R29	ORD4701F609	RESISTOR, FIXED CARBON FILM	4.7K 1/6W 5 TA52	
461 R30	ORD1001F609	RESISTOR, FIXED CARBON FILM	1.0K 1/6W 5 TA52	
462 R31	ORD1000F609	RESISTOR, FIXED CARBON FILM	100 1/6W 5 TA52	ORD1000F609
463 R33	ORD4701F609	RESISTOR, FIXED CARBON FILM	4.7K 1/6W 5 TA52	
464 R34	ORD1000F609	RESISTOR, FIXED CARBON FILM	100 1/6W 5 TA52	ORD1000F609
465 R35	ORD4701F609	RESISTOR, FIXED CARBON FILM	4.7K 1/6W 5 TA52	
466 R36	ORD4701F609	RESISTOR, FIXED CARBON FILM	4.7K 1/6W 5 TA52	
467 R37	ORD4701F609	RESISTOR, FIXED CARBON FILM	4.7K 1/6W 5 TA52	
468 R38	ORD4701F609	RESISTOR, FIXED CARBON FILM	4.7K 1/6W 5 TA52	
469 R39	ORD2201F609	RESISTOR, FIXED CARBON FILM	2.2K 1/6W 5 TA52	
470 R40	ORD1000F609	RESISTOR, FIXED CARBON FILM	100 1/6W 5 TA52	ORD1000F609
471 R41	ORD4701F609	RESISTOR, FIXED CARBON FILM	4.7K 1/6W 5 TA52	
472 R43	ORD4701F609	RESISTOR, FIXED CARBON FILM	4.7K 1/6W 5 TA52	
473 R44	ORD1000F609	RESISTOR, FIXED CARBON FILM	100 1/6W 5 TA52	ORD1000F609
474 R45	ORD4701F609	RESISTOR, FIXED CARBON FILM	4.7K 1/6W 5 TA52	
475 R46	ORD2201F609	RESISTOR, FIXED CARBON FILM	2.2K 1/6W 5 TA52	
476 R47	ORD1000F609	RESISTOR, FIXED CARBON FILM	100 1/6W 5 TA52	ORD1000F609
477 R48	ORD2201F609	RESISTOR, FIXED CARBON FILM	2.2K 1/6W 5 TA52	
478 R49	ORD1000F609	RESISTOR, FIXED CARBON FILM	100 1/6W 5 TA52	ORD1000F609
479 R50	ORD2201F609	RESISTOR, FIXED CARBON FILM	2.2K 1/6W 5 TA52	
480 R51	ORD1000F609	RESISTOR, FIXED CARBON FILM	100 1/6W 5 TA52	ORD1000F609
481 R52	ORD2201F609	RESISTOR, FIXED CARBON FILM	2.2K 1/6W 5 TA52	
482 R53	ORD1000F609	RESISTOR, FIXED CARBON FILM	100 1/6W 5 TA52	ORD1000F609
483 R58	ORD1002F609	RESISTOR, FIXED CARBON FILM	10K 1/6W 5 TA52	ORD1002F609
484 R59	ORD1000F609	RESISTOR, FIXED CARBON FILM	100 1/6W 5 TA52	ORD1000F609
485 R61	ORD4700F609	RESISTOR, FIXED CARBON FILM	470 1/6W 5 TA52	
486 R62	ORD4700F609	RESISTOR, FIXED CARBON FILM	470 1/6W 5 TA52	
487 R63	ORD4700F609	RESISTOR, FIXED CARBON FILM	470 1/6W 5 TA52	
488 R65	ORD1002F609	RESISTOR, FIXED CARBON FILM	10K 1/6W 5 TA52	ORD1002F609
489 R66	ORD4701F609	RESISTOR, FIXED CARBON FILM	4.7K 1/6W 5 TA52	
490 R67	ORD1000F609	RESISTOR, FIXED CARBON FILM	100 1/6W 5 TA52	ORD1000F609
491 R68	ORD1500F609	RESISTOR, FIXED CARBON FILM	150 1/6W 5 TA52	
492 R69	ORD1001F609	RESISTOR, FIXED CARBON FILM	1.0K 1/6W 5 TA52	
493 R70	ORD6802F609	RESISTOR, FIXED CARBON FILM	68K 1/6W 5 TA52	
494 R71	ORD3301F609	RESISTOR, FIXED CARBON FILM	3.3K 1/6W 5 TA52	
495 R72	ORD3301F609	RESISTOR, FIXED CARBON FILM	3.3K 1/6W 5 TA52	
496 R73	ORD3301F609	RESISTOR, FIXED CARBON FILM	3.3K 1/6W 5 TA52	
497 R78	ORD4702F609	RESISTOR, FIXED CARBON FILM	47K 1/6W 5 TA52	
498 R79	ORD1200F609	RESISTOR, FIXED CARBON FILM	120 1/6W 5 TA52	
499 R81	OCX1300K419	CAPACITOR TUBULA(T.C)	13P 50V J C TA52	
500 R81	ORD5100F609	RESISTOR, FIXED CARBON FILM	510 1/6W 5 TA52	
501 R83	ORD3300F609	RESISTOR, FIXED CARBON FILM	330 1/6W 5 TA52	
502 R84	ORD2002F609	RESISTOR, FIXED CARBON FILM	20K 1/6W 5 TA52	
503 R92	ORD1800F609	RESISTOR, FIXED CARBON FILM	180 1/6W 5 TA52	
504 R111	ORD3900H609	RESISTOR, FIXED CARBON FILM	390 1/2W 5 TA52	
505 R112	ORD3900H609	RESISTOR, FIXED CARBON FILM	390 1/2W 5 TA52	
506 R113	ORD1501H609	RESISTOR, FIXED CARBON FILM	1.5K 1/2W 5 TA52	
507 R114	ORD5602F609	RESISTOR, FIXED CARBON FILM	56K 1/6W 5 TA52	
508 R115	ORD2201F609	RESISTOR, FIXED CARBON FILM	2.2K 1/6W 5 TA52	
509 R117	ORD5601F609	RESISTOR, FIXED CARBON FILM	5.6K 1/6W 5 TA52	
510 R118	ORD5601F609	RESISTOR, FIXED CARBON FILM	5.6K 1/6W 5 TA52	
511 R119	ORD5601F609	RESISTOR, FIXED CARBON FILM	5.6K 1/6W 5 TA52	
512 R120	ORD5601F609	RESISTOR, FIXED CARBON FILM	5.6K 1/6W 5 TA52	
513 R121	ORD1002F609	RESISTOR, FIXED CARBON FILM	10K 1/6W 5 TA52	ORD1002F609
514 R122	ORD1202F609	RESISTOR, FIXED CARBON FILM	12K 1/6W 5 TA52	ORD1202F609
515 R123	ORD1802F609	RESISTOR, FIXED CARBON FILM	18K 1/6W 5 TA52	
516 R124	ORD7500F609	RESISTOR, FIXED CARBON FILM	750 1/6W 5 TA52	
517 R125	ORD7500F609	RESISTOR, FIXED CARBON FILM	750 1/6W 5 TA52	
518 R201	ORD1502F609	RESISTOR, FIXED CARBON FILM	15K 1/6W 5 TA52	
519 R201	ORD4702F609	RESISTOR, FIXED CARBON FILM	47K 1/6W 5 TA52	
520 R202	ORD1502F609	RESISTOR, FIXED CARBON FILM	15K 1/6W 5 TA52	
521 R202	ORD4702F609	RESISTOR, FIXED CARBON FILM	47K 1/6W 5 TA52	
522 R203	ORD1502F609	RESISTOR, FIXED CARBON FILM	15K 1/6W 5 TA52	
523 R203	ORD4702F609	RESISTOR, FIXED CARBON FILM	47K 1/6W 5 TA52	
524 R204	ORD1502F609	RESISTOR, FIXED CARBON FILM	15K 1/6W 5 TA52	
525 R204	ORD4702F609	RESISTOR, FIXED CARBON FILM	47K 1/6W 5 TA52	
526 R205	ORD1502F609	RESISTOR, FIXED CARBON FILM	15K 1/6W 5 TA52	
527 R205	ORD4702F609	RESISTOR, FIXED CARBON FILM	47K 1/6W 5 TA52	
528 R206	ORD1502F609	RESISTOR, FIXED CARBON FILM	15K 1/6W 5 TA52	
529 R206	ORD4702F609	RESISTOR, FIXED CARBON FILM	47K 1/6W 5 TA52	
530 R207	ORD0752F609	RESISTOR, FIXED CARBON FILM	75 1/6W 5 TA52	
531 R208	ORD0752F609	RESISTOR, FIXED CARBON FILM	75 1/6W 5 TA52	
532 R209	ORD1001F609	RESISTOR, FIXED CARBON FILM	1.0K 1/6W 5 TA52	
533 R210	ORN4702F409	R, METAL FILM	47K 1/6W 1%	
534 R211	ORN4702F409	R, METAL FILM	47K 1/6W 1%	
535 R212	ORD0102F609	RESISTOR, FIXED CARBON FILM	10 1/6W 5 TA52	
536 R213	ORD1001F609	RESISTOR, FIXED CARBON FILM	1.0K 1/6W 5 TA52	
537 R214	ORD8200F609	RESISTOR, FIXED CARBON FILM	820 1/6W 5 TA52	ORD8200F609
538 R215	ORD1001F609	RESISTOR, FIXED CARBON FILM	1.0K 1/6W 5 TA52	

539 R216	ORD1800F609	RESISTOR, FIXED CARBON FILM	180 1/6W 5 TA52	
540 R217	ORD2000F609	RESISTOR, FIXED CARBON FILM	200 1/6W 5 TA52	
541 R218	ORD1001F609	RESISTOR, FIXED CARBON FILM	1.0K 1/6W 5 TA52	
542 R219	ORD0752F609	RESISTOR, FIXED CARBON FILM	75 1/6W 5 TA52	
543 R220	ORD0102F609	RESISTOR, FIXED CARBON FILM	10 1/6W 5 TA52	
544 R221	ORD1601F609	RESISTOR, FIXED CARBON FILM	1.6K 1/6W 5 TA52	
545 R222	ORD1601F609	RESISTOR, FIXED CARBON FILM	1.6K 1/6W 5 TA52	
546 R231	ORD1001F609	RESISTOR, FIXED CARBON FILM	1.0K 1/6W 5 TA52	
547 R232	ORD1001F609	RESISTOR, FIXED CARBON FILM	1.0K 1/6W 5 TA52	
548 R233	ORD0752F609	RESISTOR, FIXED CARBON FILM	75 1/6W 5 TA52	
549 R234	ORD2203F609	RESISTOR, FIXED CARBON FILM	220K 1/6W 5 TA52	
550 R235	ORD2203F609	RESISTOR, FIXED CARBON FILM	220K 1/6W 5 TA52	
551 R236	ORD0752F609	RESISTOR, FIXED CARBON FILM	75 1/6W 5 TA52	
552 R239	ORD2203F609	RESISTOR, FIXED CARBON FILM	220K 1/6W 5 TA52	
553 R240	ORD2203F609	RESISTOR, FIXED CARBON FILM	220K 1/6W 5 TA52	
554 R261	ORD2203F609	RESISTOR, FIXED CARBON FILM	220K 1/6W 5 TA52	
555 R262	ORD0752F609	RESISTOR, FIXED CARBON FILM	75 1/6W 5 TA52	
556 R263	ORD2203F609	RESISTOR, FIXED CARBON FILM	220K 1/6W 5 TA52	
557 R302	ORN0101J607	RESISTOR, FIX METAL FILM	1 1W 5% TA62	
558 R303	ORN3001F409	RESISTOR, FIX METAL FILM	3K 1/6W 1% TA52	
559 R305	ORD1201H609	RESISTOR, FIXED CARBON FILM	1.2K 1/2W 5 TA52	
560 R306	ORD0221H609	RESISTOR, FIXED CARBON FILM	2.2 1/2W 5 TA52	
561 R307	ORN6202F409	RESISTOR, FIX METAL FILM	62K 1/6W 1% TA52	
562 R309	ORS0202K607	R, METAL FILM OXIDE	20 2W 5%	
563 R310	ORS4701J607	RESISTOR, FIX METAL FILM OXIDE	4.70K 1W 5% TA62	
564 R312	ORS2702J607	RESISTOR, FIX METAL FILM OXIDE	27K 1W 5% TA62	ORS2702J607
565 R313	ORD5101F609	RESISTOR, FIXED CARBON FILM	5.1K 1/6W 5 TA52	
566 R330	ORD0221H609	RESISTOR, FIXED CARBON FILM	2.2 1/2W 5 TA52	
567 R331	ORS1500K607	RESISTOR, FIX METAL FILM OXIDE	150 2W 5% TA62	
568 R401	ORD4700F609	RESISTOR, FIXED CARBON FILM	470 1/6W 5 TA52	
569 R402	ORD1001F609	RESISTOR, FIXED CARBON FILM	1.0K 1/6W 5 TA52	
570 R403	ORS4701J607	RESISTOR, FIX METAL FILM OXIDE	4.70K 1W 5% TA62	
571 R404	ORD1000F609	RESISTOR, FIXED CARBON FILM	100 1/6W 5 TA52	ORD1000F609
572 R405	ORS6800J607	RESISTOR, FIX METAL FILM OXIDE	680 1W 5% TA62	
573 R407	ORD0222H609	RESISTOR, FIXED CARBON FILM	22 1/2W 5 TA52	
574 R409	ORD2203H609	RESISTOR, FIXED CARBON FILM	220K 1/2W 5 TA52	
575 R416	ORS8201J607	RESISTOR, FIX METAL FILM OXIDE	8.20K 1W 5% TA62	
576 R417	ORD6201F609	RESISTOR, FIXED CARBON FILM	6.2K 1/6W 5 TA52	
577 R418	ORD4701F609	RESISTOR, FIXED CARBON FILM	4.7K 1/6W 5 TA52	
578 R419	ORD4701F609	RESISTOR, FIXED CARBON FILM	4.7K 1/6W 5 TA52	
579 R420	ORD1001H609	RESISTOR, FIXED CARBON FILM	1.0K 1/2W 5 M15	
580 R430	ORS8200J607	RESISTOR, FIX METAL FILM OXIDE	820 1W 5% TA62	
581 R431	180-B01M	R, CEMENT RS RECT	S 5W 7.5K J	
582 R511	ORD0221H609	RESISTOR, FIXED CARBON FILM	2.2 1/2W 5 TA52	
583 R512	ORD0472F609	RESISTOR, FIXED CARBON FILM	47 1/6W 5 TA52	
584 R513	ORD1003F609	RESISTOR, FIXED CARBON FILM	100K 1/6W 5 TA52	
585 R514	ORD1001F609	RESISTOR, FIXED CARBON FILM	1.0K 1/6W 5 TA52	
586 R515	ORD1500F609	RESISTOR, FIXED CARBON FILM	150 1/6W 5 TA52	
587 R516	ORD2000F609	RESISTOR, FIXED CARBON FILM	200 1/6W 5 TA52	
588 R517	ORD8203F609	RESISTOR, FIXED CARBON FILM	820K 1/6W 5 TA52	
589 R518	ORD0752F609	RESISTOR, FIXED CARBON FILM	75 1/6W 5 TA52	
590 R519	ORD1500F609	RESISTOR, FIXED CARBON FILM	150 1/6W 5 TA52	
591 R520	ORD3001F609	RESISTOR, FIXED CARBON FILM	3.0K 1/6W 5 TA52	
592 R521	ORD1000F609	RESISTOR, FIXED CARBON FILM	100 1/6W 5 TA52	ORD1000F609
593 R523	ORD2202F609	RESISTOR, FIXED CARBON FILM	22K 1/6W 5 TA52	
594 R524	ORD2203F609	RESISTOR, FIXED CARBON FILM	220K 1/6W 5 TA52	
595 R525	ORD9102F609	RESISTOR, FIXED CARBON FILM	91K 1/6W 5 TA52	
596 R526	ORD1502F609	RESISTOR, FIXED CARBON FILM	15K 1/6W 5 TA52	
597 R527	ORN3902F409	RESISTOR, FIX METAL FILM	39K 1/6W 1% TA52	
598 R528	ORD1201F609	RESISTOR, FIXED CARBON FILM	1.2K 1/6W 5 TA52	
599 R534	ORD1001F609	RESISTOR, FIXED CARBON FILM	1.0K 1/6W 5 TA52	
600 R535	ORD1001F609	RESISTOR, FIXED CARBON FILM	1.0K 1/6W 5 TA52	
601 R536	ORD1001F609	RESISTOR, FIXED CARBON FILM	1.0K 1/6W 5 TA52	
602 R537	ORD1001F609	RESISTOR, FIXED CARBON FILM	1.0K 1/6W 5 TA52	
603 R538	ORD1000F609	RESISTOR, FIXED CARBON FILM	100 1/6W 5 TA52	ORD1000F609
604 R539	ORD1000F609	RESISTOR, FIXED CARBON FILM	100 1/6W 5 TA52	ORD1000F609
605 R540	ORD4700F609	RESISTOR, FIXED CARBON FILM	470 1/6W 5 TA52	
606 R541	ORD1000F609	RESISTOR, FIXED CARBON FILM	100 1/6W 5 TA52	ORD1000F609
607 R542	ORD1000F609	RESISTOR, FIXED CARBON FILM	100 1/6W 5 TA52	ORD1000F609
608 R543	ORD1000F609	RESISTOR, FIXED CARBON FILM	100 1/6W 5 TA52	ORD1000F609
609 R544	ORD1001F609	RESISTOR, FIXED CARBON FILM	1.0K 1/6W 5 TA52	
610 R545	ORD1203F609	RESISTOR, FIXED CARBON FILM	120K 1/6W 5 TA52	
611 R547	ORD1000F609	RESISTOR, FIXED CARBON FILM	100 1/6W 5 TA52	ORD1000F609
612 R548	ORD3300F609	RESISTOR, FIXED CARBON FILM	330 1/6W 5 TA52	
613 R549	ORD1000F609	RESISTOR, FIXED CARBON FILM	100 1/6W 5 TA52	ORD1000F609
614 R550	ORD1500F609	RESISTOR, FIXED CARBON FILM	150 1/6W 5 TA52	
615 R551	ORD1001F609	RESISTOR, FIXED CARBON FILM	1.0K 1/6W 5 TA52	
616 R552	ORD3900F609	RESISTOR, FIXED CARBON FILM	390 1/6W 5 TA52	
617 R556	ORD4702F609	RESISTOR, FIXED CARBON FILM	47K 1/6W 5 TA52	
618 R557	ORD4701F609	RESISTOR, FIXED CARBON FILM	4.7K 1/6W 5 TA52	
619 R558	ORD4701F609	RESISTOR, FIXED CARBON FILM	4.7K 1/6W 5 TA52	
620 R559	ORD3602F609	RESISTOR, FIXED CARBON FILM	36K 1/6W 5 TA52	
621 R561	ORD1600F609	RESISTOR, FIXED CARBON FILM	160 1/6W 5 TA52	
622 R562	ORD4702F609	RESISTOR, FIXED CARBON FILM	47K 1/6W 5 TA52	
623 R563	ORD1002F609	RESISTOR, FIXED CARBON FILM	10K 1/6W 5 TA52	ORD1002F609
624 R564	ORD4702F609	RESISTOR, FIXED CARBON FILM	47K 1/6W 5 TA52	
625 R565	ORD2201F609	RESISTOR, FIXED CARBON FILM	2.2K 1/6W 5 TA52	
626 R566	ORD1600F609	RESISTOR, FIXED CARBON FILM	160 1/6W 5 TA52	
627 R571	ORD0102F609	RESISTOR, FIXED CARBON FILM	10 1/6W 5 TA52	
628 R572	ORD0102F609	RESISTOR, FIXED CARBON FILM	10 1/6W 5 TA52	

629	R573	ORD0102F609	RESISTOR, FIXED CARBON FILM	10 1/6W 5 TA52	
630	R574	ORD0221H609	RESISTOR, FIXED CARBON FILM	2.2 1/2W 5 TA52	
631	R575	ORD3001F609	RESISTOR, FIXED CARBON FILM	3.0K 1/6W 5 TA52	
632	R576	ORD1002F609	RESISTOR, FIXED CARBON FILM	10K 1/6W 5 TA52	ORD1002F609
633	R582	ORD1001F609	RESISTOR, FIXED CARBON FILM	1.0K 1/6W 5 TA52	
634	R583	ORD1000F609	RESISTOR, FIXED CARBON FILM	100 1/6W 5 TA52	ORD1000F609
635	R590	ORD1500H609	RESISTOR, FIXED CARBON FILM	150 1/2W 5 TA52	
636	R620	ORD1201F609	RESISTOR, FIXED CARBON FILM	1.2K 1/6W 5 TA52	
637	R621	ORD1201F609	RESISTOR, FIXED CARBON FILM	1.2K 1/6W 5 TA52	
638	R622	ORD4701F609	RESISTOR, FIXED CARBON FILM	4.7K 1/6W 5 TA52	
639	R623	ORS0331H609	RESISTOR, FIX METAL FILM OXIDE	3.3 1/2W 5 TA52	
640	R626	ORD3302F609	RESISTOR, FIXED CARBON FILM	33K 1/6W 5 TA52	
641	R627	ORD3302F609	RESISTOR, FIXED CARBON FILM	33K 1/6W 5 TA52	
642	R629	ORS0331H609	RESISTOR, FIX METAL FILM OXIDE	3.3 1/2W 5 TA52	
643	R801	180-822M	R,RWR	15W 1.0 OHM J	180-822M
644	R802	ORD4701F609	RESISTOR, FIXED CARBON FILM	4.7K 1/6W 5 TA52	
645	R804	ORD1000H609	RESISTOR, FIXED CARBON FILM	100 1/2W 5 TA52	
646	R805	ORS2202K607	RESISTOR, FIX METAL F	22K 2W 5% TA62	ORS2202K607
647	R806	ORS2202K607	RESISTOR, FIX METAL F	22K 2W 5% TA62	ORS2202K607
648	R807	180-A01D	R,RW ROUND	G 2W 0.16 J	
649	R808	ORS0202K607	R,METAL FILM OXIDE	20 2W 5%	
650	R809	ORN0680H609	RESISTOR FIX METAL FILM	0.68 1/2W 5 TA52	
651	R810	ORS0332K607	RESISTOR, FIX METAL FILM OXIDE	33 2W 5% TA62	ORS0332K607
652	R811	ORD2002H609	RESISTOR, FIXED CARBON FILM	20K 1/2W 5 TA52	
653	R812	ORD6801H609	RESISTOR, FIXED CARBON FILM	6.8K 1/2W 5 TA52	
654	R813	ORD2001F609	RESISTOR, FIXED CARBON FILM	2.0K 1/6W 5 TA52	
655	R814	ORD1001F609	RESISTOR, FIXED CARBON FILM	1.0K 1/6W 5 TA52	
656	R815	ORN0680H609	RESISTOR FIX METAL FILM	0.68 1/2W 5 TA52	
657	R816	ORD1001F609	RESISTOR, FIXED CARBON FILM	1.0K 1/6W 5 TA52	
658	R819	180-C02L	R,CARBON COMPOSITE	0.47MOHM 1/2 W 10%	
659	R820	ORD1001H609	RESISTOR, FIXED CARBON FILM	1.0K 1/2W 5 M15	
660	R822	ORD1002F609	RESISTOR, FIXED CARBON FILM	10K 1/6W 5 TA52	ORD1002F609
661	R823	ORD4702F609	RESISTOR, FIXED CARBON FILM	47K 1/6W 5 TA52	
662	R825	ORD1002H609	RESISTOR, FIXED CARBON FILM	10K 1/2W 5 TA52	
663	R826	ORS0332J607	RESISTOR, FIX METAL FILM OXIDE	33 1W 5% TA62	
664	R827	ORD2001F609	RESISTOR, FIXED CARBON FILM	2.0K 1/6W 5 TA52	
665	R828	ORD7501F609	RESISTOR, FIXED CARBON FILM	7.5K 1/6W 5 TA52	
666	R830	ORD4701F609	RESISTOR, FIXED CARBON FILM	4.7K 1/6W 5 TA52	
667	R831	ORS1800J607	RESISTOR, FIX METAL FILM OXIDE	180 1W 5% TA62	
668	R833	ORD2002H609	RESISTOR, FIXED CARBON FILM	20K 1/2W 5 TA52	
669	R837	ORD4701F609	RESISTOR, FIXED CARBON FILM	4.7K 1/6W 5 TA52	
670	R838	ORD1002F609	RESISTOR, FIXED CARBON FILM	10K 1/6W 5 TA52	ORD1002F609
671	R850	180-C02H	R,CARBON COMPOSIT	C12GK825V(RC 1/2W 8.2M K TA)	
672	R901	ORD1000F609	RESISTOR, FIXED CARBON FILM	100 1/6W 5 TA52	ORD1000F609
673	R902	ORD1201F609	RESISTOR, FIXED CARBON FILM	1.2K 1/6W 5 TA52	
674	R903	ORD1001F609	RESISTOR, FIXED CARBON FILM	1.0K 1/6W 5 TA52	
675	R904	ORD0562F609	RESISTOR, FIXED CARBON FILM	56 1/6W 5 TA52	
676	R905	ORD2000F609	RESISTOR, FIXED CARBON FILM	200 1/6W 5 TA52	
677	R908	ORD2003H609	RESISTOR, FIXED CARBON FILM	200K 1/2W 5 TA52	
678	R911	ORD3001F609	RESISTOR, FIXED CARBON FILM	3.0K 1/6W 5 TA52	
679	R912	ORD3001F609	RESISTOR, FIXED CARBON FILM	3.0K 1/6W 5 TA52	
680	R913	ORD3001F609	RESISTOR, FIXED CARBON FILM	3.0K 1/6W 5 TA52	
681	R921	ORD1000F609	RESISTOR, FIXED CARBON FILM	100 1/6W 5 TA52	ORD1000F609
682	R922	ORD0102F609	RESISTOR, FIXED CARBON FILM	10 1/6W 5 TA52	
683	R923	ORD2400F609	RESISTOR, FIXED CARBON FILM	240 1/6W 5 TA52	
684	R924	ORD2003F609	RESISTOR, FIXED CARBON FILM	200K 1/6W 5 TA52	
685	R925	ORS1001H609	RESISTOR, FIX METAL FILM OXIDE	1.0K 1/2W 5 TA52	
686	R926	ORS6801L667	RESISTOR, FIX METAL FILM OXIDE	6.8K 3W 5 SF30	
687	R927	ORD3300F609	RESISTOR, FIXED CARBON FILM	330 1/6W 5 TA52	
688	R928	ORS2200H609	RESISTOR, FIX METAL FILM OXIDE	220 1/2W 5 TA52	
689	R941	ORD1000F609	RESISTOR, FIXED CARBON FILM	100 1/6W 5 TA52	ORD1000F609
690	R942	ORD0102F609	RESISTOR, FIXED CARBON FILM	10 1/6W 5 TA52	
691	R943	ORD1500F609	RESISTOR, FIXED CARBON FILM	150 1/6W 5 TA52	
692	R944	ORD1803F609	RESISTOR, FIXED CARBON FILM	180K 1/6W 5 TA52	
693	R945	ORS1001H609	RESISTOR, FIX METAL FILM OXIDE	1.0K 1/2W 5 TA52	
694	R946	ORS6801L667	RESISTOR, FIX METAL FILM OXIDE	6.8K 3W 5 SF30	
695	R948	ORS2200H609	RESISTOR, FIX METAL FILM OXIDE	220 1/2W 5 TA52	
696	R950	ORD2204H609	RESISTOR, FIXED CARBON FILM	2.2M 1/2W 5 TA52	
697	R961	ORD1000F609	RESISTOR, FIXED CARBON FILM	100 1/6W 5 TA52	ORD1000F609
698	R962	ORD0102F609	RESISTOR, FIXED CARBON FILM	10 1/6W 5 TA52	
699	R963	ORD1500F609	RESISTOR, FIXED CARBON FILM	150 1/6W 5 TA52	
700	R964	ORD1803F609	RESISTOR, FIXED CARBON FILM	180K 1/6W 5 TA52	
701	R965	ORS1001H609	RESISTOR, FIX METAL FILM OXIDE	1.0K 1/2W 5 TA52	
702	R966	ORS6801L667	RESISTOR, FIX METAL FILM OXIDE	6.8K 3W 5 SF30	
703	R968	ORS2200H609	RESISTOR, FIX METAL FILM OXIDE	220 1/2W 5 TA52	
704	RL801	141-018E	RELAY	DG12D1-0(M)-2 12V44MA	
705	RS22	ORD0332H609	RESISTOR, FIXED CARBON FILM	33 1/2W 5 TA52	
706	RS23	ORD0472H609	RESISTOR, FIXED CARBON FILM	47 1/2W 5 TA52	
707	RS24	ORD0472H609	RESISTOR, FIXED CARBON FILM	47 1/2W 5 TA52	
708	RS27	ORD2200F609	RESISTOR, FIXED CARBON FILM	220 1/6W 5 TA52	
709	RS28	ORD1001F609	RESISTOR, FIXED CARBON FILM	1.0K 1/6W 5 TA52	
710	RS39	ORD1002F609	RESISTOR, FIXED CARBON FILM	10K 1/6W 5 TA52	ORD1002F609
711	RS40	ORD1000F609	RESISTOR, FIXED CARBON FILM	100 1/6W 5 TA52	ORD1000F609
712	RS41	ORD1000F609	RESISTOR, FIXED CARBON FILM	100 1/6W 5 TA52	ORD1000F609
713	RS42	ORD1001F609	RESISTOR, FIXED CARBON FILM	1.0K 1/6W 5 TA52	
714	RS43	ORD1001F609	RESISTOR, FIXED CARBON FILM	1.0K 1/6W 5 TA52	
715	RT78	ORD2701F609	RESISTOR, FIXED CARBON FILM	2.7K 1/6W 5 TA52	
716	RT79	ORD1001F609	RESISTOR, FIXED CARBON FILM	1.0K 1/6W 5 TA52	
717	RT80	ORD3000F609	RESISTOR, FIXED CARBON FILM	300 1/6W 5 TA52	
718	RT81	ORD3000F609	RESISTOR, FIXED CARBON FILM	300 1/6W 5 TA52	

719 RT82	ORD3000F609	RESISTOR,FIXED CARBON FILM	300 1/6W 5 TA52	
720 RT86	ORD1001F609	RESISTOR,FIXED CARBON FILM	1.0K 1/6W 5 TA52	
721 SG901	165-004A	SPARK GAP	AG20PT 152F-L3N/S-23	
722 SK230	6612VJH008B	JACK,RCA	PJ6063B PARK ELEC 3P STEREO (2	
723 SK901	381-226D	SOCKET	CPT PCS628-01S/LESS BULK(N05)	381-226D
724 SW11	140-315A	SWITCH	TACT 4LEAD 160g H4.75mmVERT TA	
725 SW12	140-315A	SWITCH	TACT 4LEAD 160g H4.75mmVERT TA	
726 SW13	140-315A	SWITCH	TACT 4LEAD 160g H4.75mmVERT TA	
727 SW14	140-315A	SWITCH	TACT 4LEAD 160g H4.75mmVERT TA	
728 SW15	140-315A	SWITCH	TACT 4LEAD 160g H4.75mmVERT TA	
729 SW16	140-315A	SWITCH	TACT 4LEAD 160g H4.75mmVERT TA	
730 SW801	6600VM2001A	SWITCH,PUSH	POWER SDDFC3 4A/128A 250V	
731 T114	113-234E	TUNER	TUGG9-D07P LGEC PAL	113-234E
732 T406	6174Z-6229L	FBT (FLY BACK TRANSFORMER)	FTMPN11-D6229L	
733 T451	151-C02B	TRANSFORMER	H-DRIVE,EI-19,BULK	151-C02B
734 T514	166-C02D	FILTER	TRAP TPS6.0MB-TF21	166-C02D
735 T516	166-C04C	FILTER	TRAP TPWA02B-TF21(5.5/6.5)	
736 T519	166-C02B	FILTER	TRAP TPS4.5MB-TF21	166-C02B
737 T801	150-F06J	COIL	LINE FILTER SQE2930 18MH	
738 T803	151-B01F	TRANSFORMER,SMPS	EER4954 410UH MC-74A(CISPR-13)	
739 TH801	163-054F	THERMISTOR,PTC	J502P84D140M290Q JA HWA Q 220V	
740 X11	166-E05C	RESONATOR	RESO, CST8.00MTW-TF01	
741 X511	156-A01V	CRYSTAL	4.433619 SER.PF 80 OHM BULK	
742 X512	156-A01C	CRYSTAL	3.579545 90 OHM BULK	
743 XS11	156-A02M	CRYSTAL	18.432000 10PF 20 OHM BULK	156-A02M
744 Z111	166-A01E	FILTER	OFWK6266K	166-A01E
745 ZD111	0DZ330009BA	DIODE ZENER	HZT33 TP-02TE HITACHI	0DZ330009BA
746 ZD113	0DZ510009AB	DIODE ZENER	MTZ5.1B(TA)	0DZ510009AB
747 ZD305	0DZ240009BB	DIODE ZENER	Z24BL TA	0DZ240009BB
748 ZD306	0DZ110009AA	DIODE ZENER	Z11BM TA	0DZ110009AA
749 ZD402	0DZ750009AA	DIODE,ZENER	MTZ7.5B,TP(52MM),ROHM	0DZ750009AA
750 ZD405	0DZ820009AA	DIODE ZENER	MTZ8.2B TP ROHM-K	0DZ820009AA
751 ZD516	0DZ510009AB	DIODE ZENER	MTZ5.1B(TA)	0DZ510009AB
752 ZD517	0DZ510009AB	DIODE ZENER	MTZ5.1B(TA)	0DZ510009AB
753 ZD518	0DZ510009AB	DIODE ZENER	MTZ5.1B(TA)	0DZ510009AB
754 ZD590	0DZ510009AB	DIODE ZENER	MTZ5.1B(TA)	0DZ510009AB
755 ZD808	0DZ750009AA	DIODE,ZENER	MTZ7.5B,TP(52MM),ROHM	0DZ750009AA
756 ZD828	0DZ910009BA	DIODE ZENER	Z9.1B	0DZ910009BA
757 ZD901	0DZ750009AA	DIODE,ZENER	MTZ7.5B,TP(52MM),ROHM	0DZ750009AA
758 ZNR801	164-003D	VARISTOR	SVC 561D-14A	164-003D
759 ZS14	166-A01W	FILTER(CIRC),SAW	OFWK9252M SIEMENS	