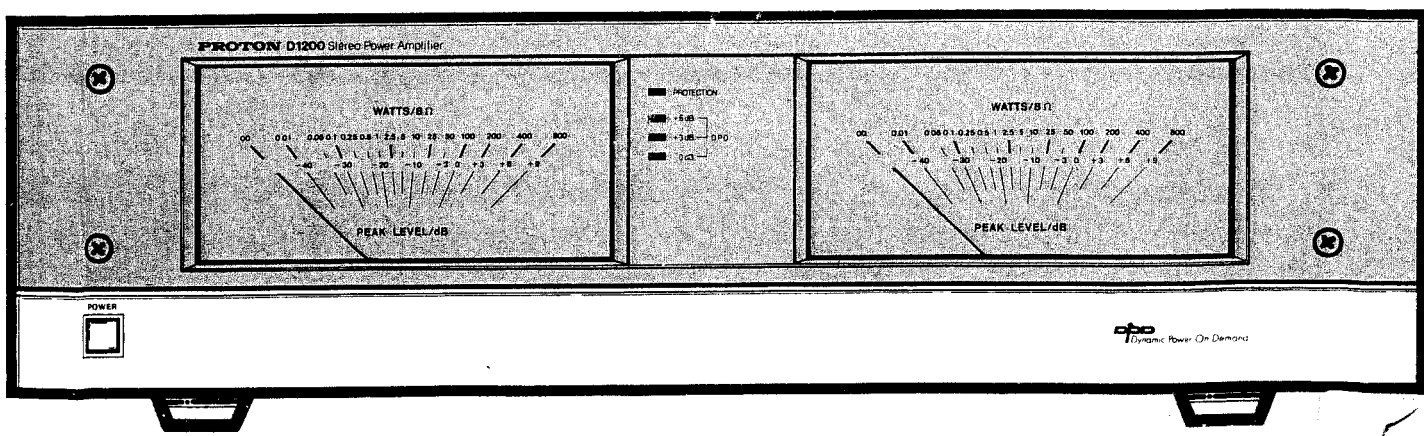


PROTON SERVICE MANUAL

D1200 STEREO POWER AMPLIFIER



CONTENTS

SPECIFICATION.....	1
ALIGNMENT.....	2
BLOCK DIAGRAM.....	3
WIRING DIAGRAM.....	4
CIRCUIT DIAGRAM.....	5
PCB PARTS LOCATION (TOP VIEW).....	6
PCB PARTS LOCATION (BOTTOM VIEW).....	7
ELECTRICAL PARTS LIST.....	8
ASSEMBLY DIAGRAM.....	9
MECHANING.....	11
PACKING DIAGRAM.....	12

SPECIFICATION

Rated Power Output (20Hz-20kHz, 8 OHM):	100W, Per Channel
Dynamic Power at 8 OHM/4 OHM/2 OHM	
1) I.H.F. Standard 20ms Duration:	540W/1000W/1500W
2) 100ms Duration:	450W/650W/800W
3) 200ms Duration:	380W/500W/520W
(Duty Cycle: 500ms)	
Dynamic Headroom at 8 OHM/4 OHM/2 OHM:	7.3dB
T.H.D. at Rated Power:	0.02%
I.M.D. at Rated Power:	0.02%
Clipping Power at 8 OHM/4 OHM/2 OHM:	110W/175W/220W
Bridge Power at 8 OHM/4 OHM:	1800W/2700W
Damping Factor:	>150
Frequency Response 20-20kHz:	±0.2dB
Power Bandwidth at T.H.D. 0.1%:	10-40kHz
Input Resistance/Capactance:	15K OHM/220pF
Input Sensitivity:	1V
Channel Crosstalk (1kHz):	85dB
S/N Ratio (A-Weighted):	120dB
Dimensions W×H×D (inch):	16.5"×4.3"×14.2"
(cm):	42×11×36
Net Weight:	15Kg
Power Supply	
U.S. and Canadian Models:	120V/60Hz
European Model:	220V/50Hz
British and Australian Models:	240V/50Hz
Other Area Model (General Model):	115V, 230V/50, 60Hz

ALIGNMENT

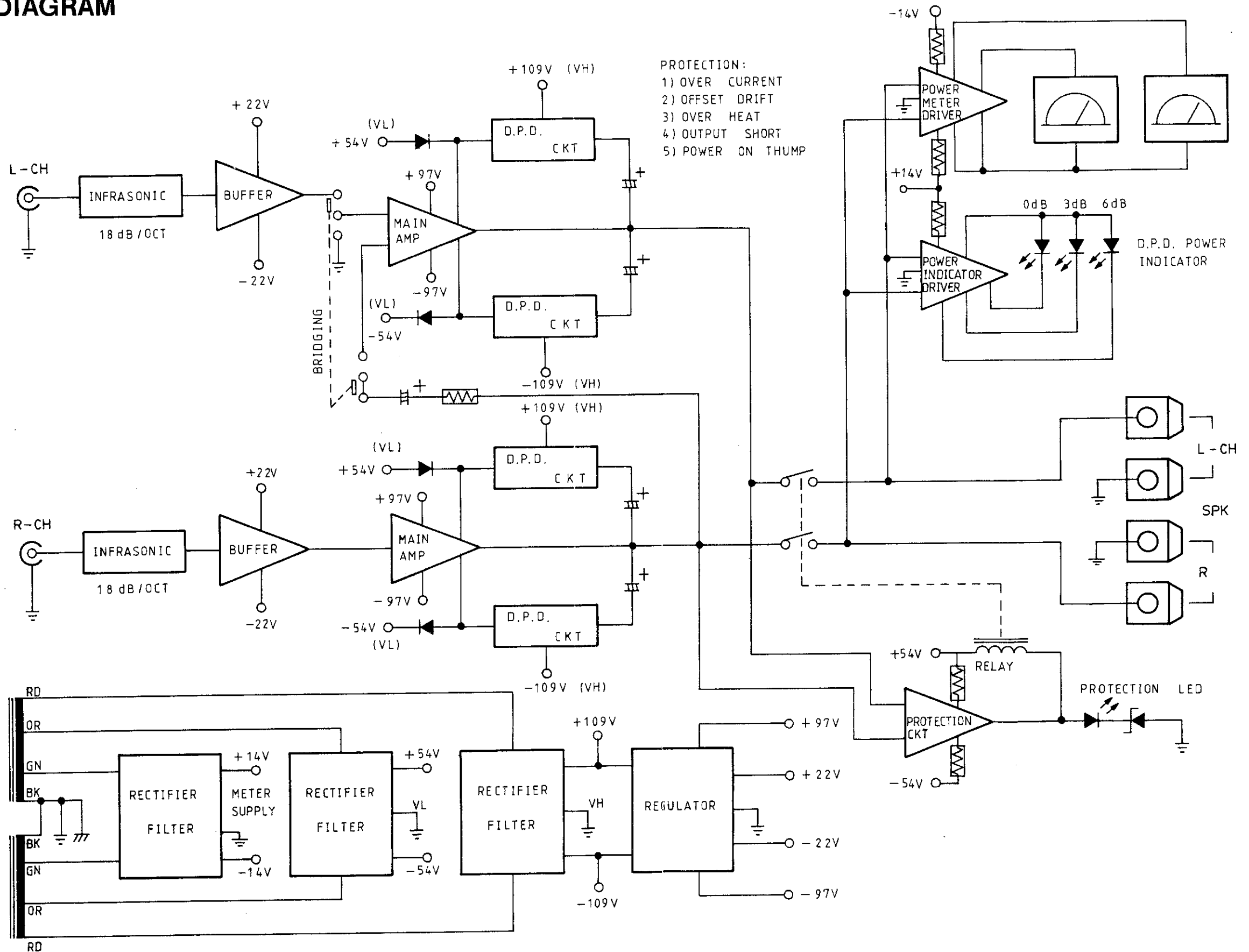
IDLE CURRENT ALIGNMENT

1. Turn VR603, VR604 to fully counter clockwise position.
2. Remove the load from speaker terminals.
3. Push on POWER for 5 minutes pre-heating.
4. Connect DC millivolt-meter across R651 for left channel R652 for right channel. The meter sensitivity should be set at 100mV full scale deflection.
5. Adjust VR603 (left channel) and VR604 (right channel) till the reading from meter is between 2.5mV and 5.0mV the alignment is completed.

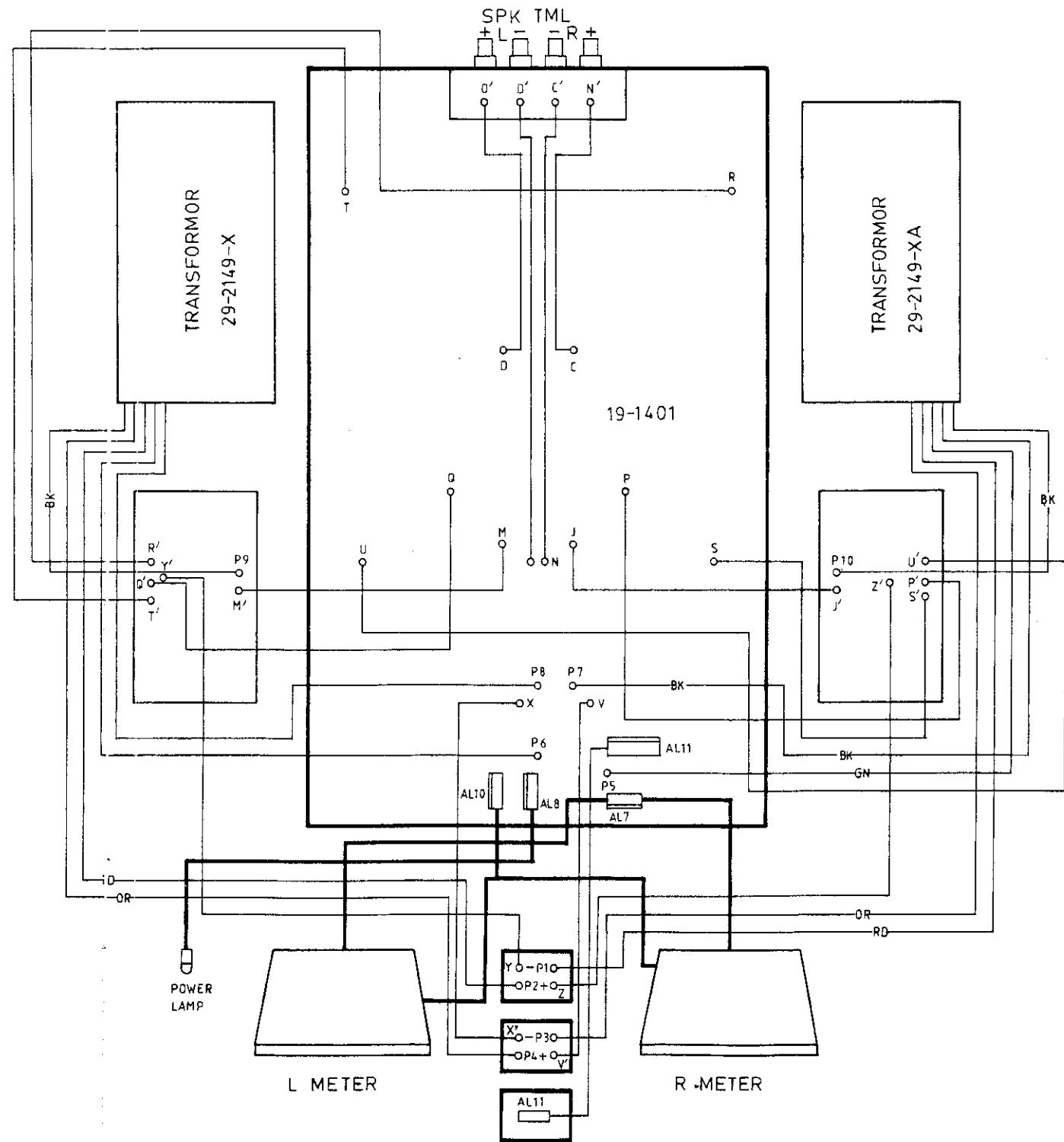
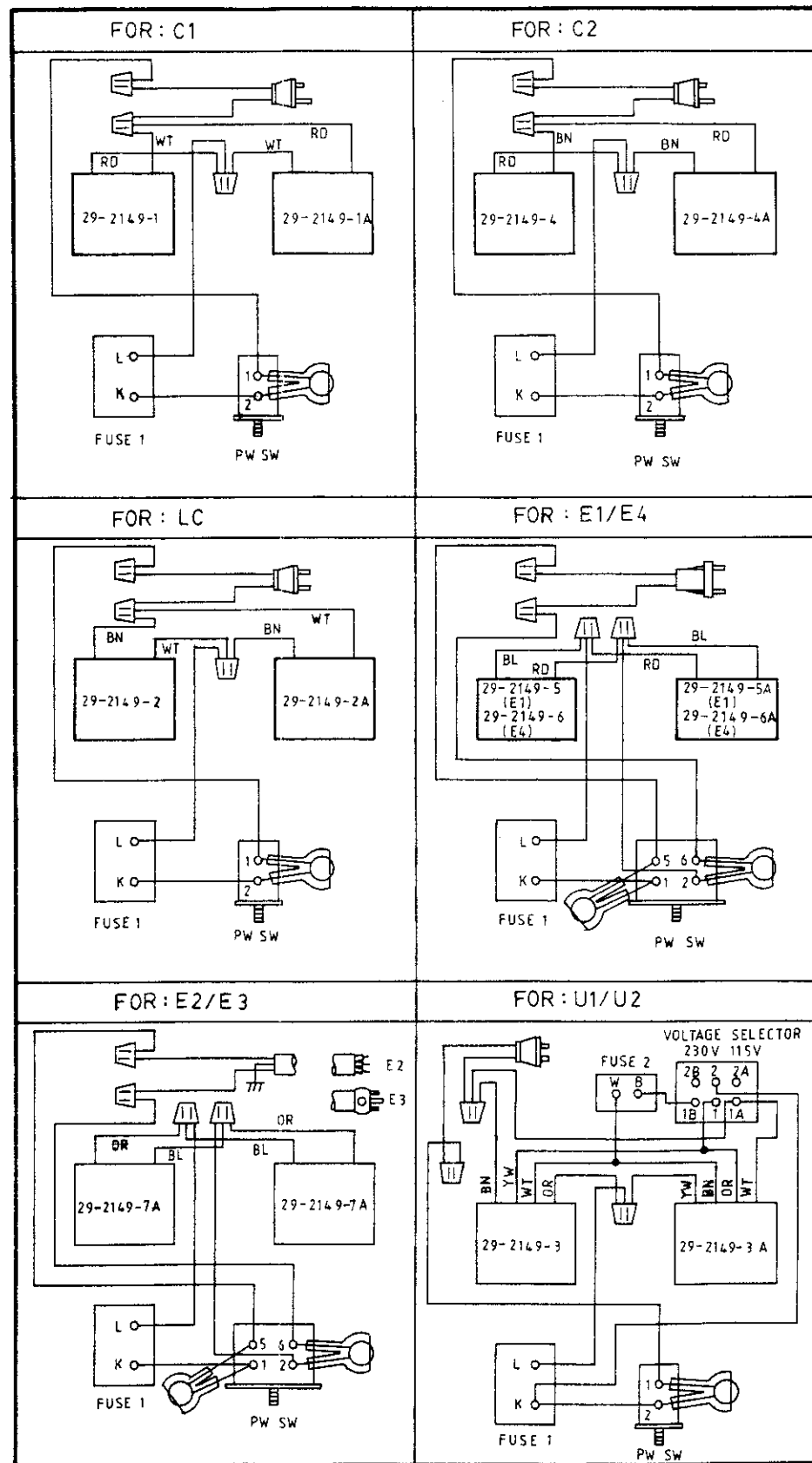
OFFSET ALIGNMENT

1. Remove the load from speaker terminals.
2. Push on POWER for 5 minutes pre-heating.
3. Connect a DC millivolt-meter to speaker terminals of each channel. The meter sensitivity should be set at 100mV full scale deflection. The positive input of the meter should be connected to the red (+) speaker terminal.
4. Adjust VR601 (left channel) and VR602 (right channel) till the meter reading is zero. The alignments is completed.

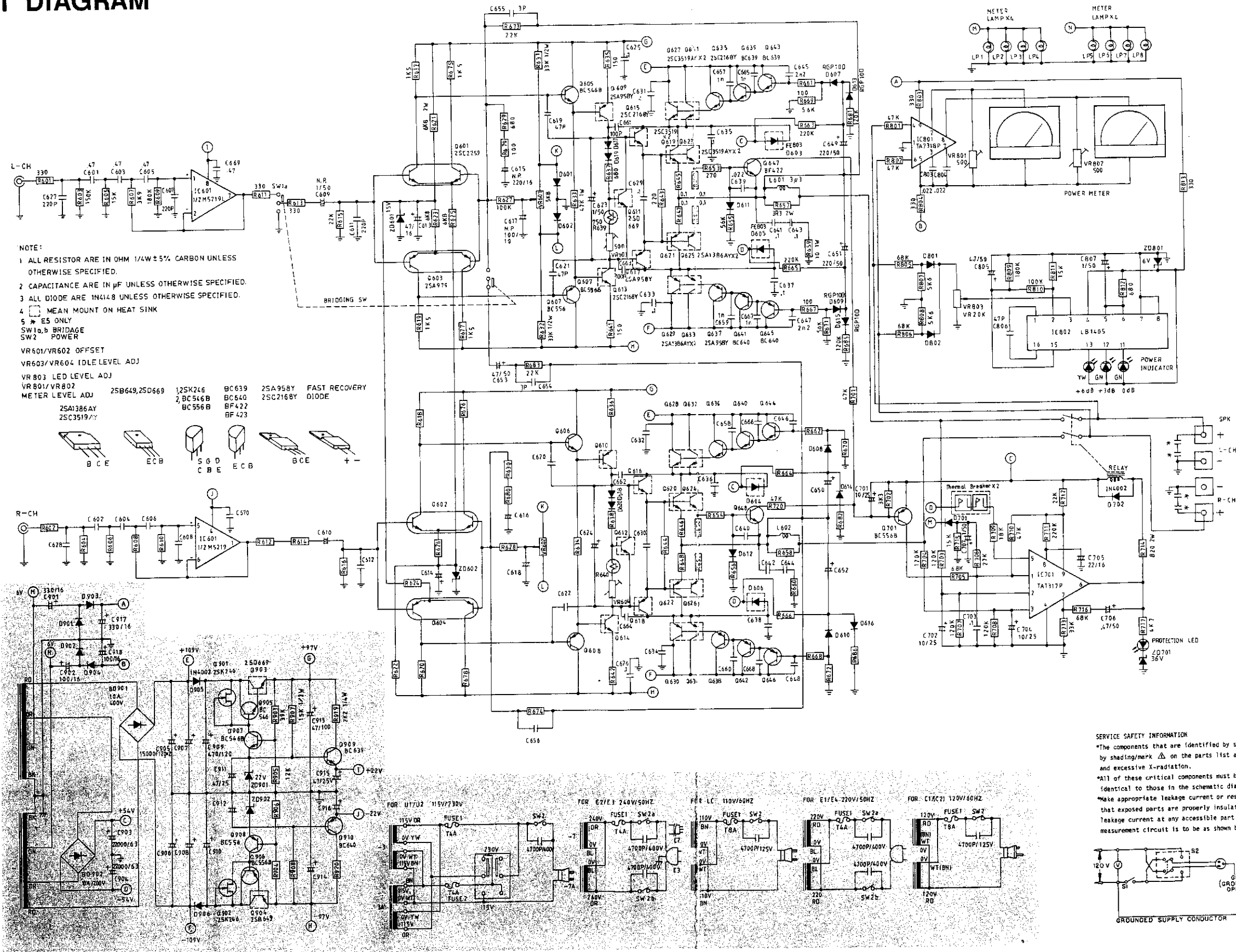
BLOCK DIAGRAM



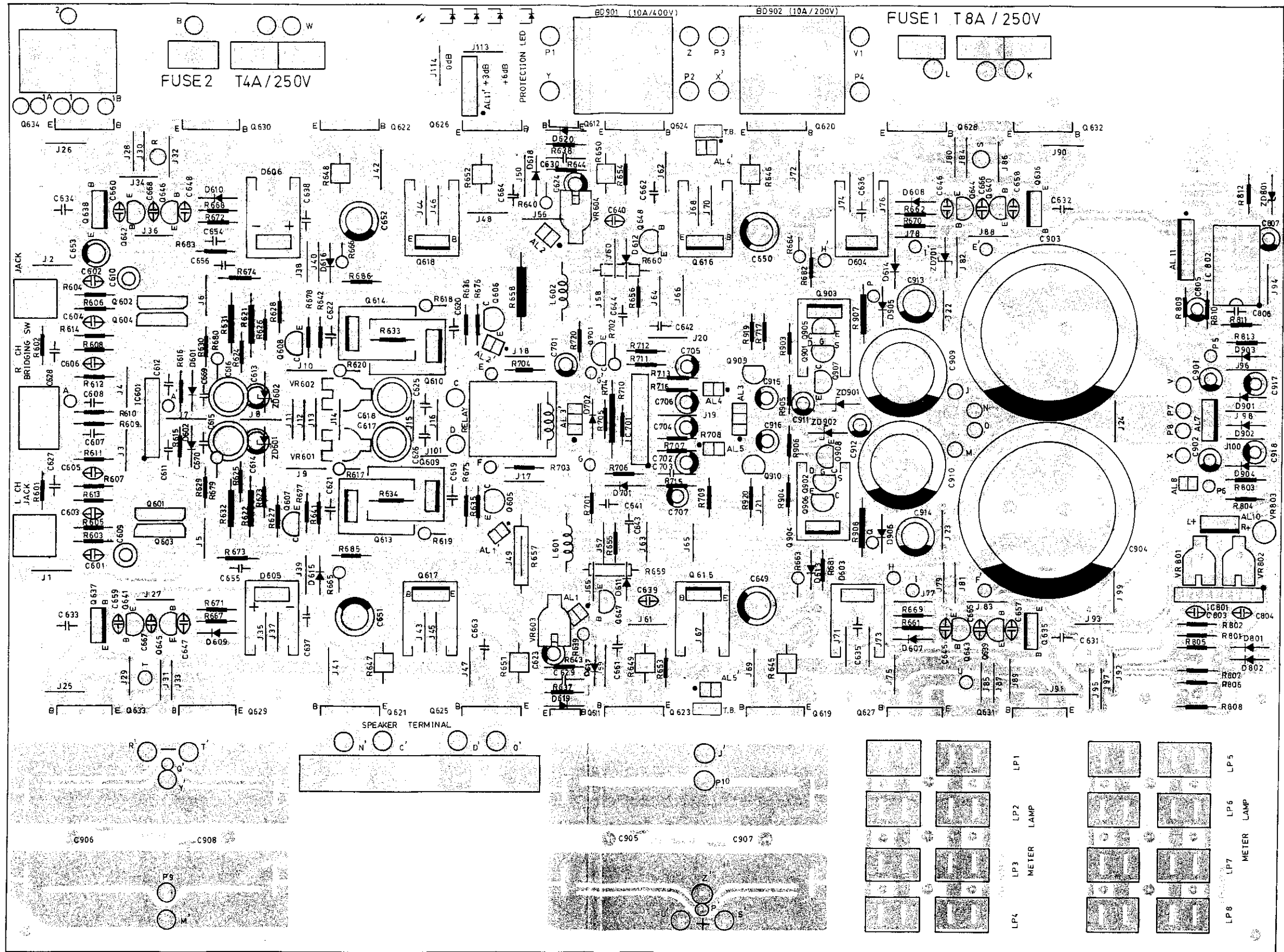
WIRING DIAGRAM



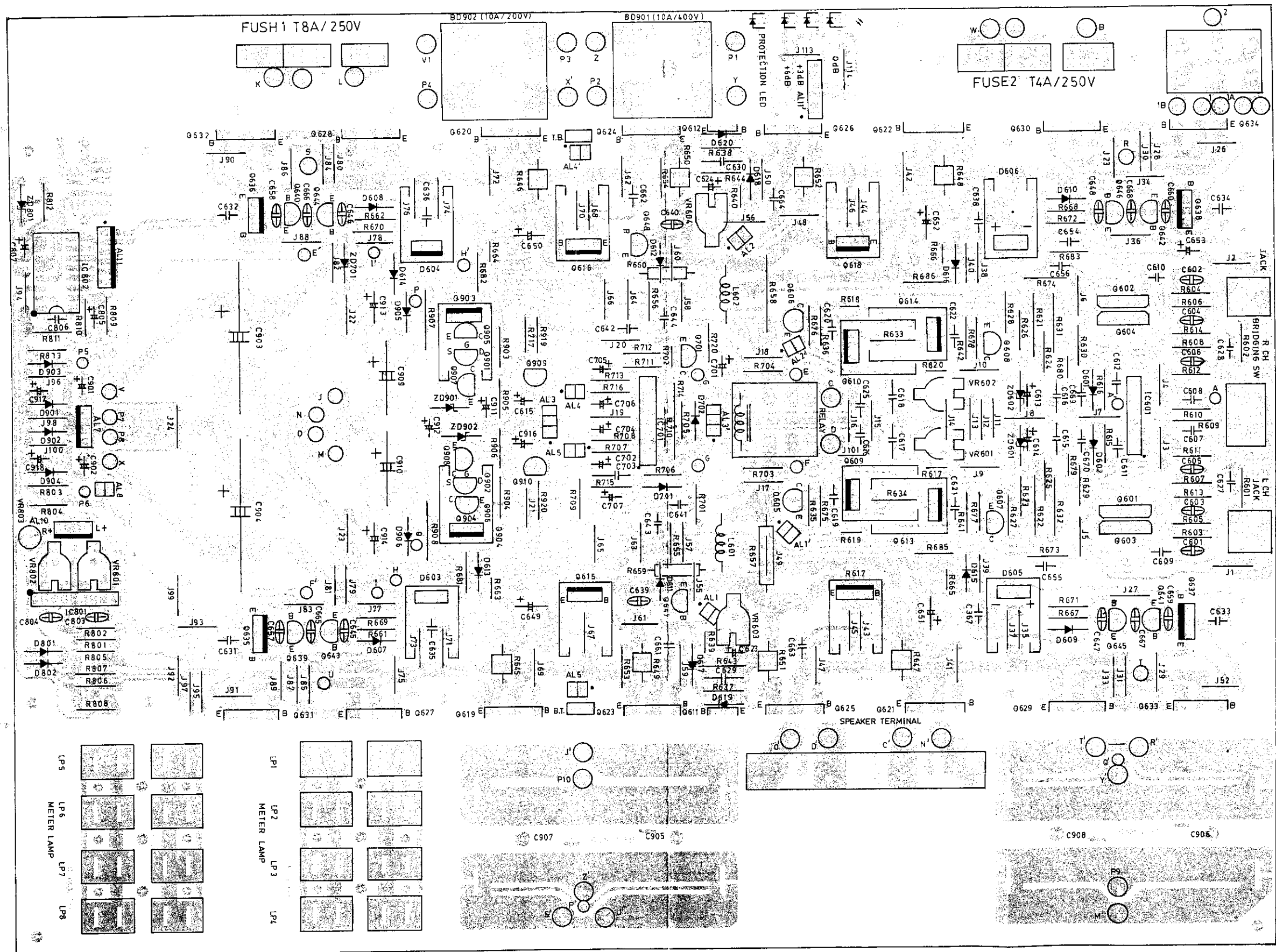
CIRCUIT DIAGRAM



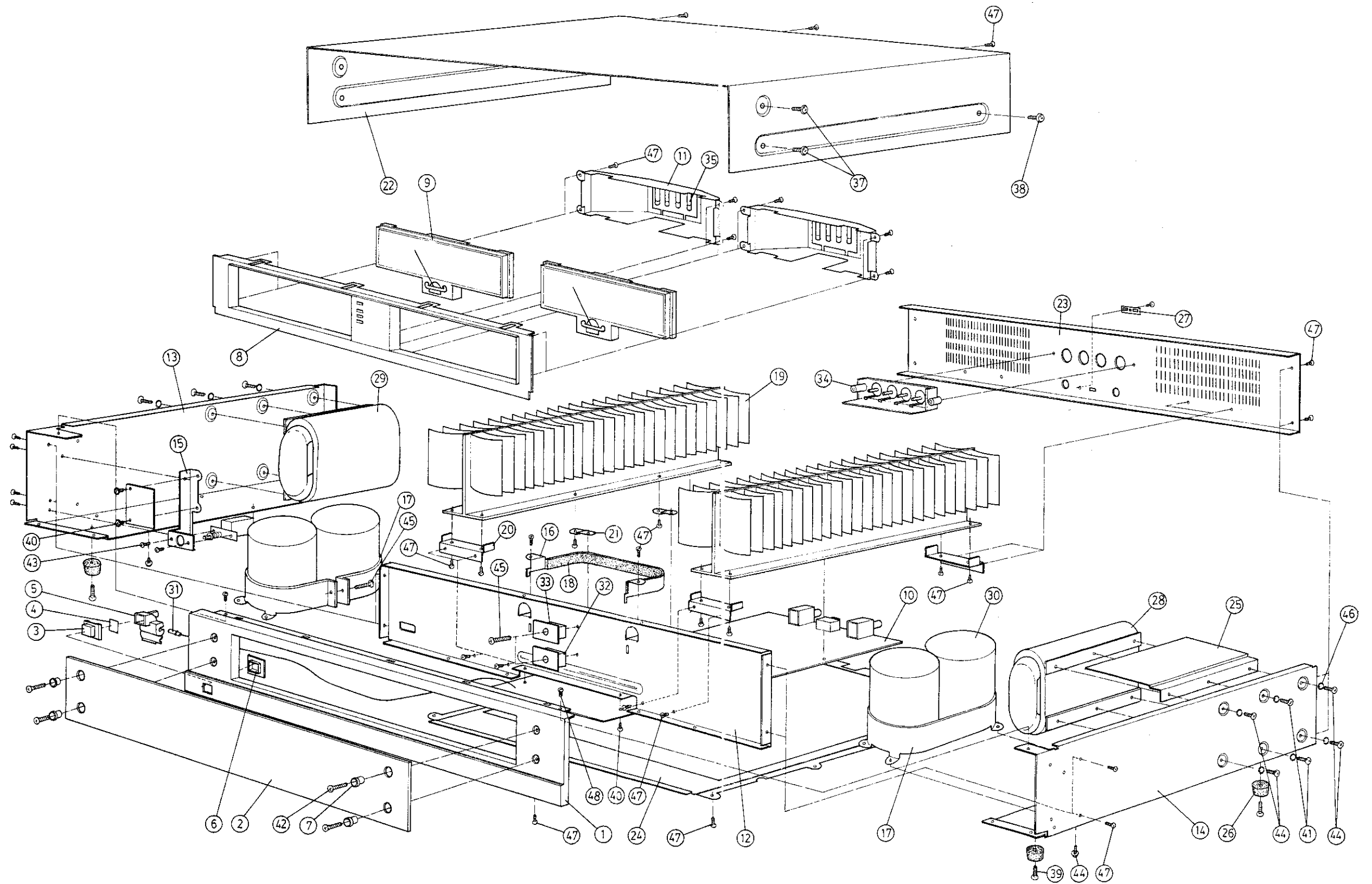
PCB PARTS LOCATION (TOP VIEW)



PCB PARTS LOCATION (BOTTOM VIEW)

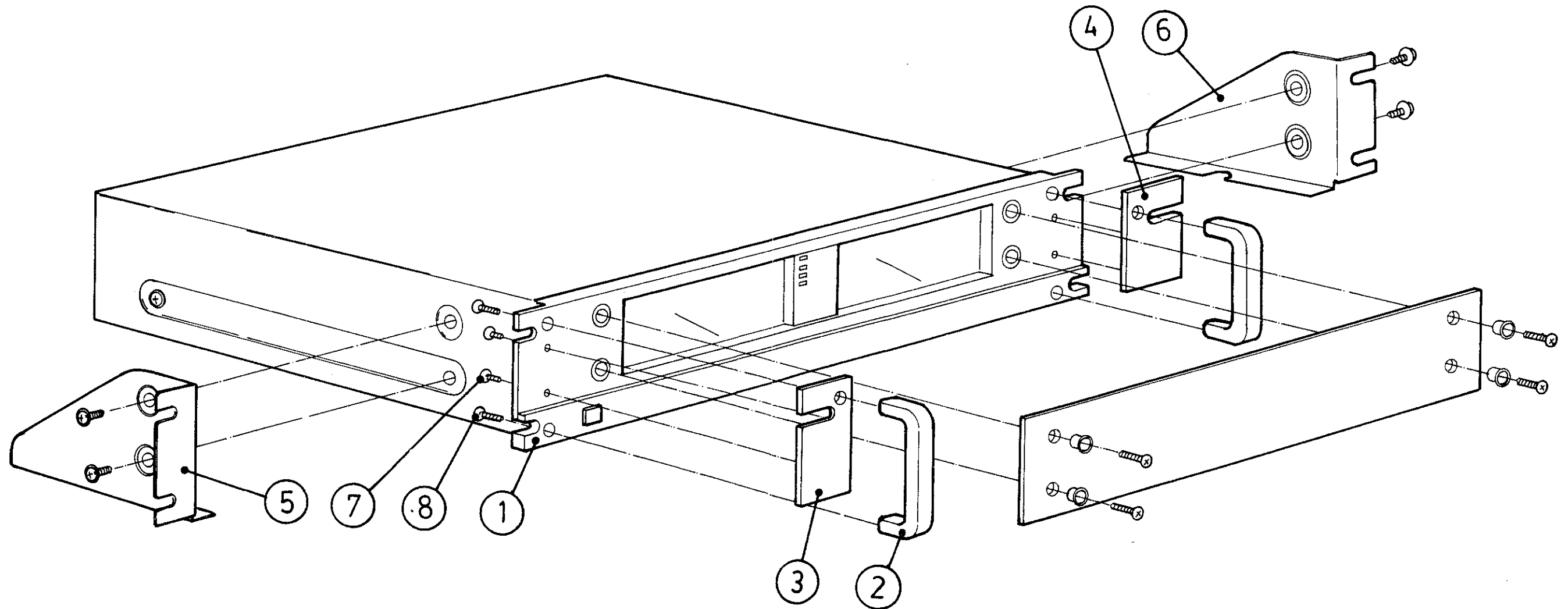


ASSEMBLY DIAGRAM



ASSEMBLY DIAGRAM

ITEM	DESCRIPTION	PART NO.	Q' TY
1	FRONT PANEL	11-8380-1	1
2	HANDLE	12-6012	2
3	HANDLE BASE L.	12-6013	1
4	HANDLE BASE R.	12-6014	1
5	HANDLE BKT. L.	11-2408	1
6	HANDLE BKT. R.	11-2409	1
7	FLAT HEAD MACHINE SCREW	S1E03+I07SL-2	4
8	FLAT HEAD MACHINE SCREW	S1E05+I15SL-2	4



MECHANICAL PARTS LIST

ITEM	DESCRIPTION	PART NO.	Q'TY
1	FRONT PANEL	11-8380	1
2	SMOKED GLASS	11-9160	1
3	PUSH KNOB	12-3193	1
4	SHIELD	11-9161	1
5	POWER SWITCH CONNECTOR	12-7044	1
6	BUSHING A	12-7042	1
7	BASE FOR GLASS	15-2T01	4
8	AUX. PANEL	11-8384	1
9	METER SIGNAL	35-1030	2
10	MAIN PCB	19-1401	1
11	LIGHT COLLECTOR	11-9162	2
12	FRONT CHASSIS	11-6209	1
13	AUX. CHASSIS L	11-6208	1
14	AUX. CHASSIS R	11-6210	1
15	POWER SWITCH HOLDER	11-3127	1
16	CAP HOLDER B	11-3119	1
17	CAP HOLDER A	11-3118	2
18	CAP RETAINER	28-2139	1
19	HEAT SINK	11-5086	2
20	SINK HOLDER	11-3120	4
21	P.C.B. HOLDER	11-3121	4
22	CABINET	50-1055	1
23	BACK PANEL	11-8393-1	1
24	BOTTOM CHASSIS	11-6211	1
25	X'FORMER SHIELD	11-9167	1
26	RUBBER STAND	28-1029	4
27	STOPPER SWITCH B	11-9107	1
28	X'FORMER	29-2149-XA	1
29	X'FORMER	29-2149-X	1
30	CAPACITOR	17-12P159Y	2
31	LAMP	31-2044	1
32	DIODE	30-1317	1
33	DIODE	30-1318	1
34	SPK TML	12-2007	1
35	LAMP	31-2043	8
36	POWER SWITCH	31-1366 (31-1292)	1
37	SPECIAL SCREW	15-2051	4
38	SPECIAL SCREW	15-2069	2
39	SPECIAL SCREW	15-2063	4
40	SPECIAL SCREW	15-2075	10
41	MACHINE SCREW	S1D04+I06SL-2	4
42	MACHINE SCREW	S1E04+I18SL-2	4
43	MACHINE SCREW	S1D03+I06SL-2	6
44	MACHINE SCREW	S1D04+I10SL-2	8
45	MACHINE SCREW	S1D04+I16SL-2	4
46	SPRING WASHER	A04G07SL01	12
47	TAPPING SCREW	S2D03+I08SL-2	70
48	MACHINE SCREW	S1E03+I06SL-2	2

PACKING DIAGRAM

ITEM	DESCRIPTION	PART NO.	Q'TY
1	INNER CARTON	CT-5278	1
2	POLYLONE	34-1054	2
3	WARRANTY CARD	21-3046	1
4	OWNER'S MANUAL (21-4140 CHINESE)	21-4139	1

