

YOKO

5515

MODEL

SERVICE MANUAL

SAFETY PRECAUTIONS

WARNING: BEFORE SERVICING THIS CHASSIS, READ THE "X-RAY RADIATION PRECAUTIONS", "SAFETY INSTRUCTIONS" AND "PRODUCT SAFETY NOTICE" DESCRIBED BELOW.

X-RAY RADIATION PRECAUTIONS

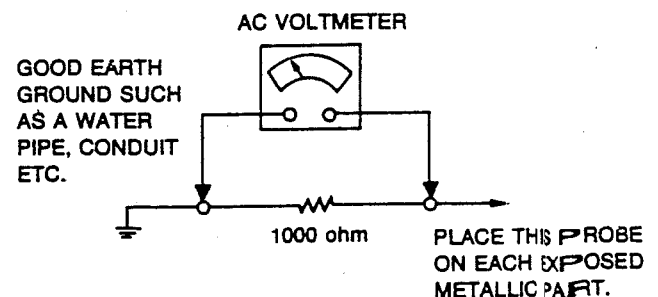
1. Excessive high voltage can produce potentially hazardous X-RAY RADIATION. To avoid such hazards, the high voltage must not be above the specified limit. The nominal value of the high voltage of this receiver is 24 ± 1.5 kV at High beam current (maximum brightness) under specified power source. The high voltage must not under any circumstances, exceed 27.5 KV. Each time a receiver requires servicing, the high voltage should be checked. It is recommended the reading of the high voltage be recorded as a part of the service record. It is important to use an accurate and reliable high voltage meter.
2. The only source of X-RAY RADIATION in this TV receiver is the picture tube. For continued X-RAY RADIATION protection, the replacement tube must be exactly the same type tube as specified in the parts list.
3. Some parts in this receiver have special safety-related characteristics for X-RAY RADIATION protection. For continued safety, parts replacement should be undertaken only after referring to the PRODUCT SAFETY NOTICE below.

SAFETY INSTRUCTIONS

1. Potentials as high as 25,000—27,000 volts are present when this receiver is operating. Operation of the receiver outside the cabinet or with the back cover removed involves a shock hazard from the receiver.
 - (1) Servicing should not be attempted by anyone who is not thoroughly familiar with the precautions necessary when working on high-voltage equipment.
 - (2) Always discharge the picture tube anode to the CHASSIS GROUND to reduce the shock hazard before removing the anode cap.
 - (3) Perfectly discharge the high potential of the picture tube before handling.
(WARNING: Risk of implosion. Handle with care.)
2. If any Fuse in this TV receiver is blown, replace it with the FUSE specified in the chassis parts list only.
3. When replacing parts or circuit boards, wind the lead wires around terminals before soldering.
4. When replacing a high wattage resistor (oxide metal film resistor) in circuit board, keep the resistor 10 mm. away from circuit board.
5. Keep wires away from high voltage or high temperature components.
6. This TV receiver should be connected to AC 220 V.
7. Before returning the set to the customer, always perform an AC leakage current check on the exposed metallic parts

of the cabinet, such as antennas, terminals, screwheads, metal overlays, control shafts, etc., to be sure the set is safe to operate without danger of electrical shock. Plug the AC line cord directly into a 220 V AC outlet. (Do not use a line isolation transformer during this check). Use an AC voltmeter having 1000 ohms per volt or more sensitivity in the following manner.

Connect a 1000 ohm resistor between a known good earth ground, (water pipe, conduit, etc.) and the exposed metallic parts, one at a time. Measure the AC voltage across the combination of 1000 ohm resistor. Reverse the AC plug at the AC outlet and repeat AC voltage measurements for each exposed metallic part. Voltage measured must not exceed 1 volt RMS. This corresponds to 1 mA. AC. Any value exceeding this limit constitutes a potential shock hazard and must be corrected immediately.



PRODUCT SAFETY NOTICE

Many electrical and mechanical parts in this chassis have special safety-related characteristics. These characteristics are often passed unnoticed by a visual inspection and the X-RAY RADIATION protection afforded by them cannot necessarily be obtained by using replacement components rated for higher voltage, wattage, etc. Replacement parts which have these special safety characteristics are identified by Δ marks on the schematic diagram and the replacement parts list. Before replacing any of these components, read the parts list in this manual carefully. The use of substitute replacement parts which do not have the same safety characteristics as specified in the parts list may create X-RAY RADIATION.

And then use specified parts only when replacing.

REPLACEMENT PARTS LIST

CAUTION : Before replacing any of these components, read carefully the "SAFETY PRECAUTIONS" on page 2.
Do not degrade the safety of the receiver through improper servicing.

-ABBREVIATIONS: Capacitors CC : Ceramic(TC), MYL : Mylar, CE : Electrolytic, CK : Ceramic(Hi-K)
PP : Polypropylene film MPP : Metal Polypropylene film MPE : Metal Polyester film
Resistors RD : Carbon film, RS : Metal Oxide film, RN : Metal film, RV : Variable or Semifix

- NOTE:** 1. All capacitors are $\pm 20\%$, 50Volts and all resistor, $\pm 5\%$, 1/6W unless otherwise noted.
2. SP marked parts at the remarks mean the parts which are the serviceable parts.
NSP marked parts at the remarks mean the parts which are not serviceable parts.
3. Refer to the additional parts list at page 39, because the following are common parts of the two models.

1. ASSEMBLED P.C.BOARD(CBT-9742E/9745E)

NO. ON BOARD	ASSEMBLY PART NO.	DESCRIPTION	RE-MARKS
111-871B	110-A31P	PCB ASSY, CPT	SP
111-C77A	110-K30A	PCB ASSY, MAIN	SP

2. MAIN P.C.BOARD(110-K30A)

LOCATION NO.	PART NO.	DESCRIPTION	RE-MARKS
RESISTOR			
R101	01165105	RD, 2.2K ohm	SP
R102	01165097	RD, 1K ohm	SP
R103	01165137	RD, 47K ohm	SP
R104	01165125	RD, 15K ohm	SP
R105	01165119	RD, 8.2K ohm	SP
R106	01165121	RD, 10K ohm	SP
R107	01165143	RD, 82K ohm	SP
R108	01165121	RD, 10K ohm	SP
R109	01165087	RD, 390 ohm	SP
R110	01165089	RD, 470 ohm	SP
R111	01165137	RD, 47K ohm	SP
R112	01165075	RD, 120 ohm	SP
R114	01165121	RD, 10K ohm	SP
R115	01165097	RD, 1K ohm	SP
R116	01165073	RD, 100 ohm	SP
R117	01165067	RD, 56 ohm	SP
R118	01165105	RD, 2.2K ohm	SP
R119	01165097	RD, 1K ohm	SP
R120	01165111	RD, 3.9K ohm	SP
R121	01165077	RD, 150 ohm	SP
R123	01165105	RD, 2.2K ohm	SP
R125	01165097	RD, 1K ohm	SP
R126	01165129	RD, 22K ohm	SP
R127	01165131	RD, 27K ohm	SP
R128	01165097	RD, 1K ohm	SP
R130	01165097	RD, 1K ohm	SP
R153	01165097	RD, 1K ohm	SP
R158	01165115	RD, 5.6K ohm	SP

LOCATION NO.	PART NO.	DESCRIPTION	RE-MARKS
R159	01165117	RD, 6.8K ohm	SP
R160	01165104	RD, 2K ohm	SP
R161	01165081	RD, 220 ohm	SP
R162	01165055	RD, 18 ohm	SP
R165	01165113	RD, 4.7K ohm	SP
R166	01165097	RD, 1K ohm	SP
R167	01165055	RD, 18 ohm	SP
R169	01165057	RD, 22 ohm	SP
R201	01165057	RD, 22 ohm	SP
R202	01165070	RD, 75 ohm	SP
R203	01165129	RD, 2.2K ohm	SP
R204	01165126	RD, 16K ohm	SP
R205	01165121	RD, 10K ohm	SP
R206	01165121	RD, 10K ohm	SP
R207	01165115	RD, 5.6K ohm	SP
R208	01165113	RD, 4.7K ohm	SP
R209	01165097	RD, 1K ohm	SP
R210	01165093	RD, 680 ohm	SP
R211	01165070	RD, 75 ohm	SP
R212	01165087	RD, 390 ohm	SP
R213	01165070	RD, 75 ohm	SP
R214	01165070	RD, 75 ohm	SP
R215	01165070	RD, 75 ohm	SP
R216	01165103	RD, 1.8K ohm	SP
R220	01165093	RD, 680 ohm	SP
R301	01165105	RD, 2.2K ohm	SP
R302	01165157	RD, 330K ohm	SP
R303	01165125	RD, 15K ohm	SP
R304	01165153	RD, 220K ohm	SP
R305	01165117	RD, 6.8K ohm	SP
R306	01154085	RD, 330 ohm 1/2W	SP
R307	01157099	RD, 1.2 ohm 1/8W	SP
R308	01165151	RD, 180K ohm	SP
R309	01165125	RD, 15K ohm	SP
R310	01154025	RD, 1 ohm 1/2W	SP
R311	01165121	RD, 10K ohm	SP
R312	01157101	RD, 1.5K ohm 1/8 W	SP 1/8W
R401	01165115	RD, 5.6K ohm	SP

LOCATION NO.	PART NO.	DESCRIPTION	RE-MARKS
R402	01165090	RD, 510 ohm	SP
R403	01165095	RD, 820 ohm	SP
R404	01165161	RD, 470K ohm	SP
R405	01165115	RD, 5.6K ohm	SP
R406	01165121	RD, 10K ohm	SP
R407	01165101	RD, 1.5K ohm	SP
R408	01165145	RD, 100K ohm	SP
R409	01165097	RD, 1K ohm	SP
R411	01165133	RD, 33K ohm	SP
R412	01165081	RD, 220 ohm	SP
R413	01165161	RD, 470K ohm	SP
R414	01165147	RD, 120K ohm	SP
R415	01165081	RD, 220 ohm	SP
R416	01154101	RD, 1.5K ohm 1/2W	SP
R417	01314073	RS, 100 ohm 1W	SP
R418	01154079	RD, 180 ohm 1/2W	SP
R419	01154099	RD, 1.2K ohm 1/2W	SP
R420	180-140Q	Fusible, 1.8 ohm 2W	SP
R421	01154128	RD, 20K ohm 1/2W	SP
R422	01157097	RD, 1K ohm 1/8W	SP
R423	01157139	RD, 56K ohm 1/8W	SP
R424	01157139	RD, 56K ohm 1/8W	SP
R425	01165135	RD, 39K ohm	SP
R426	01165129	RD, 22K ohm	SP
R427	180-305G	Fusible, 1.5 ohm 1W	SP
R428	01157073	RD, 100 ohm 1/8W	SP
R429	01157097	RD, 1K ohm 1/8W	SP
R430	01154087	RD, 390 ohm 1/2W	SP
R431	01165057	RD, 22 ohm	SP
R432	01154103	RD, 1.8K ohm 1/2W	SP
R433	180-140B	Fusible, 1 ohm 1/2W	SP
R434	180-140B	Fusible, 1 ohm 1/2W	SP
R435	01165137	RD, 47K ohm	SP
R439	01165125	RD, 15K ohm	SP
R440	01314029	RS, 1.5ohm 1W	SP
R441	01157095	RD, 820 ohm 1/8W	SP
R456	180-140B	Fusible, 1 ohm 1/2W	SP
R501	01165165	RD, 680K ohm	SP
R502	01165077	RD, 150 ohm	SP
R504	01165111	RD, 3.9K ohm	SP
R505	01165102	RD, 1.6K ohm	SP
R506	01165099	RD, 1.2K ohm	SP
R507	01165128	RD, 20K ohm	SP
R508	01165121	RD, 10K ohm	SP
R509	01165101	RD, 1.5K ohm	SP
R510	01165097	RD, 1K ohm	SP
R511	01165087	RD, 390 ohm	SP
R512	01165099	RD, 1.2K ohm	SP
R513	01165089	RD, 470 ohm	SP
R514	01165106	RD, 2.4K ohm	SP
R516	01165121	RD, 10K ohm	SP
R517	01165139	RD, 56K ohm	SP
R519	01165099	RD, 1.2K ohm	SP
R520	01165099	RD, 1.2K ohm	SP
R521	01165099	RD, 1.2K ohm	SP
R523	01165121	RD, 10K ohm	SP
R522	01165103	RD, 1.8K ohm	SP
R601	01165103	RD, 1.8K ohm	SP

LOCATION NO.	PART NO.	DESCRIPTION	RE-MARKS
R602	01165121	RD, 10K ohm	SP
R603	01165087	RD, 390 ohm	SP
R604	01165097	RD, 1K ohm	SP
R605	01165093	RD, 680 ohm	SP
R606	01165106	RD, 2.4K ohm	SP
R607	01165104	RD, 2K ohm	SP
R608	01165091	RD, 560 ohm	SP
R609	01165102	RD, 1.6K ohm	SP
R610	01165080	RD, 200 ohm	SP
R701	01165097	RD, 1K ohm	SP
R702	01165137	RD, 47K ohm	SP
R703	01165121	RD, 10K ohm	SP
R704	01165111	RD, 3.9K ohm	SP
R705	01165111	RD, 3.9K ohm	SP
R706	01165073	RD, 100 ohm	SP
R707	01165121	RD, 10K ohm	SP
R708	01165125	RD, 15K ohm	SP
R709	01165073	RD, 100 ohm	SP
R710	01165121	RD, 10K ohm	SP
R711	01165121	RD, 10K ohm	SP
R712	01165105	RD, 2.2K ohm	SP
R713	01165109	RD, 3.3K ohm	SP
R714	01154073	RD, 100 ohm 1/2W	SP
R715	01165107	RD, 2.7K ohm	SP
R716	01165107	RD, 2.7K ohm	SP
R717	01165104	RD, 2K ohm	SP
R718	01165121	RD, 10K ohm	SP
R719	01165087	RD, 390 ohm	SP
R720	01165087	RD, 390 ohm	SP
R721	01165087	RD, 390 ohm	SP
R722	01165087	RD, 390 ohm	SP
R723	01165087	RD, 390 ohm	SP
R724	01165087	RD, 390 ohm	SP
R725	01165087	RD, 390 ohm	SP
R726	01165087	RD, 390 ohm	SP
R727	01165121	RD, 10K ohm	SP
R728	01165121	RD, 10K ohm	SP
R729	01165121	RD, 10K ohm	SP
R730	01165121	RD, 10K ohm	SP
R731	01165121	RD, 10K ohm	SP
R732	01165102	RD, 1.6K ohm	SP
R733	01165121	RD, 10K ohm	SP
R734	01165121	RD, 10K ohm	SP
R735	01165129	RD, 22K ohm	SP
R736	01165129	RD, 22K ohm	SP
R737	01165129	RD, 22K ohm	SP
R738	01165129	RD, 22K ohm	SP
R739	01165129	RD, 22K ohm	SP
R740	01165131	RD, 27K ohm	SP
R741	01165121	RD, 10K ohm	SP
R742	01165117	RD, 6.8K ohm	SP
R743	01165115	RD, 5.6K ohm	SP
R744	01165139	RD, 56K ohm	SP
R745	01165125	RD, 15K ohm	SP
R746	01157103	RD, 1.8K ohm 1/8W	SP
R747	01314065	RS, 47 ohm 1W	SP
R748	01157095	RD, 820 ohm 1/8W	SP
R749	01314069	RS, 68 ohm/1W	SP

LOCATION NO.	PART NO.	DESCRIPTION	RE-MARKS
R750	01157093	RD, 680 ohm 1/8W	SP
R751	01165073	RD, 100 ohm	SP
R752	01165097	RD, 1K ohm	SP
R753	01165097	RD, 1K ohm	SP
R754	01165097	RD, 1K ohm	SP
R755	01165097	RD, 1K ohm	SP
R756	01165073	RD, 100 ohm	SP
R757	01165073	RD, 100 ohm	SP
R758	01165073	RD, 100 ohm	SP
R759	01165115	RD, 5.6K ohm	SP
R761	01165113	RD, 4.7K ohm	SP
R766	01165121	RD, 10K ohm	SP
R800	01165057	RD, 22 ohm	SP
R801	01165081	RD, 220 ohm	SP
R802	01165115	RD, 5.6K ohm	SP
R803	01157073	RD, 100 ohm 1/8W	SP
R804	01154155	RD, 270K ohm 1/2W	SP
R805	01154167	RD, 820K ohm 1/2W	SP
R806	01157112	RD, 4.3K ohm 1/8W	SP
R807	01165113	RD, 4.7K ohm	SP
R808	01341129	RS, 22K ohm, 3.15W	SP
R809	01165121	RD, 10K ohm	SP
R810	180-042B	GF, 4.7M ohm 1/2W	SP
R811	01341073	RS, 100 ohm 3.15W	SP
R812	01165079	RD, 180 ohm	SP
R813	180-140B	Fusible, 1 ohm 1/2W	SP
R814	180-140B	Fusible, 1 ohm 1/2W	SP
R851	01154152	RD, 200K ohm 1/2W	SP
R852	01341125	RS, 15K ohm 3.15W	SP
R853	01154125	RD, 15K ohm 1/2W	SP
R854	180-142V	CEMENT PWR 4.7 ohm 5W	SP
RS01	01165117	RD, 6.8K ohm	SP
RS02	01157145	RD, 100K ohm 1/8W	SP
RS03	01157145	RD, 100K ohm 1/8W	SP
RS04	01157145	RD, 100K ohm 1/8W	SP
RS05	01332049	RS, 10 ohm 1W	SP
RS06	01157133	RD, 33K ohm 1/8W	SP
RS07	01154025	RD, 1 ohm 1/2W	SP
RS08	01157119	RD, 8.2K ohm 1/8W	SP
VR101	180-428H	RV, 10KB	SP
VR301	180-425M	RV, 220KB	SP
VR302	180-428H	RV, 10KB	SP
VR401	180-425L	RV, 100KB	SP
VR402	180-428H	RV, 10KB	SP
VR501	180-428D	RV, 1KB	SP
VR601	180-428D	RV, 1KB	SP
VR602	01165087	RD, 390 ohm	SP
VR801	180-428C	RV, 500B	SP
CAPACITOR			
C101	08110505	CE, 0.47uF	SP
C102	08300112	CC, 10pF ± 0.5P	SP
C104	08200972	CK, 0.01uF +80% -20%	SP
C106	08200760	CK, 0.001uF ± 10%	SP
C107	08110501	CE, 0.1uF	SP
C108	08110313	CE, 10uF/16V	SP
C109	08110511	CE, 4.7uF	SP
C110	08300724	CC, 33pF ± 5%	SP

LOCATION NO.	PART NO.	DESCRIPTION	RE-MARKS
C111	08110511	CE, 4.7uF	SP
C112	08200972	CK, 0.01uF +80%, -20%	SP
C113	08200972	CK, 0.01uF +80%, -20%	SP
C114	08300736	CC, 100pF ± 5%	SP
C115	08110319	CE, 100uF/16V	SP
C116	08200972	CK, 0.01uF +80%, -20%	SP
C117	08300116	CC, 15pF ± 5%	SP
C119	08110507	CE, 1uF	SP
C120	08300728	CC, 47pF ± 5%	SP
C121	08110511	CE, 4.7uF	SP
C123	08200760	CK, 0.001uF ± 10%	SP
C151	08200972	CK, 0.01uF +80% -20%	SP
C152	08300740	CC, 150pF	SP
C153	08200972	CK, 0.01uF +80% -20%	SP
C158	08110507	CE, 1uF	SP
C161	08200972	CK 0.01uF +80% -20%	SP
C162	02300110	CC, 8pF ± 0.5P	SP
C163	02300110	CC, 8pF ± 0.5P	SP
C166	08200760	CK, 0.001uF ± 10%	SP
C167	08110319	CE, 100uF/16V	SP
C168	08110505	CE, 0.47uF	SP
C169	08110511	CE, 4.7uF	SP
C170	08110313	CE, 10uF/16V	SP
C171	08110313	CE, 10uF/16V	SP
C172	0870243A	MYL, 0.033uF/100V, ± 5%	SP
C173	08110511	CE, 4.7uF	SP
C174	08200972	RD, 10Kohm +80%, -20%	SP
C202	08110313	CE, 10uF/16V	SP
C203	181-064N	CE, 4.7uF/16V	SP
C204	08110511	CE, 4.7uF	SP
C205	08110511	CE, 4.7uF	SP
C206	08200972	CK, 0.01uF +80% -20%	SP
C207	08700337	MYL, 0.1uF 100V+ ± 10%	SP
C208	08110313	CE, 10uF/16V	SP
C209	08200972	CK, 0.01uF± 80%, -20%	SP
C212	02300138	CC, 120pF ± 5%	SP
C301	181-155A	MR, 0.22uF/100V ± 5%	SP
C302	181-155B	MR, 0.33uF/100V ± 5%	SP
C303	08300154	CC, 560pF ± 5%	SP
C304	08200760	CK, 0.001uF, ± 10%	SP
C305	08300730	CC, 56pF ± 5%	SP
C306	08110419	CE, 100uF/25V	SP
C307	08700337	MYL, 0.1uF/100V± 10%	SP
C308	08110507	CE, 1uF	SP
C309	02140327	CE, 2200uF/16V	SP
C310	08700331	MYL, 0.01uF/100V ± 10%	SP
C315	D8700331	MYL, 0.01uF/100V ± 10%	SP
C401	08300144	CC, 220pF ± 5%	SP
C402	08110509	CE, 2.2uF	SP
C403	08110315	CE, 22uF/16K 16V	SP
C404	08700337	MYL, 0.1uF/100V ± 10%	SP
C405	08110511	CE, 4.7uF	SP
C406	08110317	CE, 47uF/16V	SP
C407	02140316	CE, 33uF/16V	SP
C408	181-057F	PE, 0.00 27uF/100V	SP
C409	08700337	MYL, 0.1uF/100V ± 10%	SP
C410	08700337	MYL, 0.1uF/100V ± 10%	SP
C411	08700337	MYL, 0.1uF/100V ± 10%	SP
C412	08200748	CK, 330pF ± 10%	SP

LOCATION NO.	PART NO.	DESCRIPTION	RE-MARKS
C413	08705336	MYL, 0.068uF/100V ± 10%	SP
C414	02110421	CE, 220uF/25V	SP
C415	181-131C	MPP, 0.0086MPP/1.6KV	SP
C416	181-415F	MPF, 0.39uF/250V	SP
C417	08110707	CE, 1uF/160V	SP
C418	08201046	CK, 270pF/500V ± 10%	SP
C419	181-081B	CE, 220uF/35V	SP
C420	08201046	CK, 270pF/500V ± 10%	SP
C421	02140422	CE, 330uF/25V	SP
C422	181-081B	CE, 220uF/35V	SP
C423	02140719	CE, 100uF/160V	SP
C424	08208046	CK, 270pF/500V ± 10%	SP
C425	02140811	CE, 4.7uF/250V	SP
C426	181-059D	PP, 0.047uF/200V	SP
C427	08201046	CK, 270pF/500V, ± 10%	SP
C428	02140521	CE, 220uF	SP
C429	02140321	CE, 220uF/16V + 80% -20%	SP
C431	08110313	CE, 10uF/16V	SP
C432	08110511	CE, 4.7uF	SP
C433	08300146	CC, 270pF ± 5%	SP
C437	02200748	CK, 330pF ± 10%	SP
C438	02140321	CE, 200uF/16V +80% -20%	SP
C501	08110317	CE, 47uF/16V	SP
C502	08200972	CK, 0.01uF +80%, -20%	SP
C503	08110505	CE, 0.47uF	SP
C504	08300730	CC, 56pF, ± 5%	SP
C505	08300720	CC, 22pF, ± 5%	SP
C506	08700337	MYL, 0.1uF/100V ± 10%	SP
C507	08110509	CE, 2.2uF	SP
C508	08110315	CE, 22uF/16V	SP
C509	08110313	CE, 10uF/16V	SP
C510	08700337	MYL, 0.1uF, 100V ± 10%	SP
C511	08110313	CE, 10uF/16V	SP
C512	08700337	MYL, 0.1uF/100V ± 10%	SP
C513	08700337	MYL, 0.1uF/100V ± 10%	SP
C514	08700337	MYL, 0.1uF/100V ± 10%	SP
C515	08110507	CE, 1uF	SP
C516	08110507	CE, 1uF	SP
C517	08110507	CE, 1uF	SP
C518	08700337	MYL, 0.1uF/100V ± 10%	SP
C519	08110509	CE, 2.2uF	SP
C520	08700337	MYL, 0.1uF/100V ± 10%	SP
C521	08200972	CK, 0.01uF +80% -20%	SP
C522	08700331	MYL, 0.01uF/100V ± 10%	SP
C523	08300138	CC, 120pF ± 5%	SP
C524	08300728	CC, 470pF ± 5%	SP
C601	02705337	MYL, 0.1uF/100V ± 10%	SP
C602	02705337	MYL, 0.1uF/100V ± 10%	SP
C603	08300728	CC, 47pF ± 5%	SP
C604	08300732	CC, 68pF ± 5%	SP
C605	02705337	MYL, 0.1uF/100V ± 10%	SP
C606	08110501	CE, 0.1uF	SP
C607	08110313	CE, 10uF/16V	SP
C608	08700331	MYL, 0.01uF/100V ± 10%	SP
C609	08200760	CK, 0.001uF ± 10%	SP
C610	08110511	CE, 4.7uF	SP
C611	08110315	CE, 22uF/16V	SP
C612	08110507	CE, 1uF	SP
C613	08200760	CK, 0.001uF ± 10%	SP

LOCATION NO.	PART NO.	DESCRIPTION	RE-MARKS
C614	08300734	CC, 82pF ± 5%	SP
C615	02705337	MYL, 0.1uF/100V ± 10%	SP
C616	02705337	MYL, 0.1uF/100V ± 10%	SP
C617	08200760	CK, 0.001uF ± 10%	SP
C618	08200760	CK, 0.001uF ± 10%	SP
C620	08200760	CK, 0.001uF ± 10%	SP
C701	08110501	CE, 0.1uF	SP
C704	08110313	CE, 10uF/16V	SP
C705	08110317	CE, 47uF/16V	SP
C706	08200760	CK, 0.001uF ± 10%	SP
C707	08200760	CK, 0.001uF ± 10%	SP
C708	08200760	CK, 0.001uF ± 10%	SP
C709	08200760	CK, 0.001uF ± 10%	SP
C710	08200760	CK, 0.001uF ± 10%	SP
C711	08200760	CK, 0.001uF ± 10%	SP
C712	08200760	CK, 0.001uF ± 10%	SP
C713	08200760	CK, 0.001uF ± 10%	SP
C714	08110317	CE, 47uF/16V	SP
C715	08200760	CK, 0.001uF ± 10%	SP
C716	08200760	CK, 0.001uF ± 10%	SP
C717	08200760	CK, 0.001uF ± 10%	SP
C718	08200760	CK, 0.001uF ± 10%	SP
C719	08110507	CE, 1uF	SP
C720	08700337	MYL, 0.1uF/100V ± 10%	SP
C721	08110507	CE, 1uF	SP
C722	08110507	CE, 1uF	SP
C723	08110315	CE, 22uF/16V	SP
C725	08110319	CE, 100uF/16V	SP
C726	08200972	CK, 0.01uF +80% -20%	SP
C727	08110317	CE, 47uF/16V	SP
C730	08200972	CK, 0.01uF + 80%, -20%/16V	SP
C801	08110507	CE, 1uF	SP
C802	08200760	CK, 0.001uF ± 10%	SP
C803	181-057Q	PE, 0.0082uF/100V	SP
C804	181-415H	MPF, 0.033uF/630V	SP
C805	08110317	CE, 47uF/16V	SP
C806	08700337	MYL, 0.1uF/100V ± 10%	SP
C807	181-157B	DE, 1410 E22M	SP
C808	02140719	CE, 100uF/160V	SP
C809	08201046	CK, 270pF/500V ± 10%	SP
C810	08201046	CK, 270pF/500V ± 10%	SP
C811	181-081C	CE, 1000uF/35V	SP
C812	08201046	CK, 270pF/500V ± 10%	SP
C813	02140323	CE, 470uF/16V	SP
C815	08110319	CE, 100uF/16V	SP
C820	081-157B	DE, 1410 E 22M	SP
C851	181-408C	Capacitor, 0.47uF/250V	SP
C852	181-408B	Capacitor, 0.15uF	SP
C854	08201060	CK, 0.001uF/500V ± 10%	SP
C855	08201060	CK, 0.001uF/500V ± 10%	SP
C856	08201060	CK, 0.001uF/500V ± 10%	SP
C857	08201060	CK, 0.001uF/500V ± 10%	SP
C858	181-124B	CE, 200uF/400V	SP
C860	02201560B	CK, 0.001uF/2kV ± 10%	SP
CS01	08110511	CE, 4.7uF	SP
CS02	087-331	MYL, 0.01uF/100V ± 10%	SP
CS03	08110317	CE, 47uF/16V	SP
CS04	181-081B	CE, 220uF/35V	SP
CS05	08700337	MYL, 0.1uF/100V ± 10%	SP
CS06	08110313	CE, 10uF/16V	SP
CS07	02140323	CE, 470uF/16V	SP

LOCATION NO.	PART NO.	DESCRIPTION	RE-MARKS
CS08	181-081B	CE, 220uF/35V	SP
TC501	181-169A	Capacitor trimmer 4.5P-20P	SP
TC601	181-169A	Capacitor trimmer 4.5P-20P	SP
COIL AND TRANSFORMER			
L102	150-327M	COIL, VIF	SP
L103	150-327Q	COIL, AFT	SP
L104	04040039	PL, 8.2uH ± 10%	SP
L105	04040045	PL, 15uH ± 10%	SP
L152	04040035	PL, 5.6uH ± 10%	SP
L153	04040045	PL, 15uH ± 10%	SP
L162	150-381A	COIL, ASC TRAP	SP
L163	150-167D	Coil, Choke 1uH	SP
L401	04040109	PL, 6800uH ± 10%	SP
L402	150-224C	Coil Linearity	SP
L403	125-022B	CORE, FERRITE	NSP
L501	04040045	PL, 1.5uH ± 10%	SP
L502	150-163G	COIL, MATRIX ADJ	SP
L503	04040043	PL, 12uH ± 10%	SP
L504	04040053	PL, 33uH ± 10%	SP
L601	150-489B	Coil Secam Bell Filter	SP
L602	04040039	PL, 8.2uH/± 10%	SP
L603	150-489C	Coil Delay Matrix Adj.	SP
L604	04040031	PL, 3.9uH ± 10%	SP
L605	150-489D	Coil Secam DEM	SP
L606	01165067	RD 56 ohm	SP
L801	150-235E	HOR Choke 1uH	SP
L851	150-494A	COIL, LINE FILTER	SP
L809	04040089	PL, 1000uH ± 10%	SP
DL501	150-377G	Coil Delay Line(350N)	SP
DL502	175-013A	DELAY LINE 1H SD-11 P1D	SP
DL601	175-013A	Delay Line 1H SD-11 P1D	SP
DL602	150-377F	Coil, Y-Delay Line(380N)	SP
T401	151-116B	TRANS, H. DRIVE	SP
T402	154-177B	FBT, PAL 19 INCH	SP
T801	151-337A	TRANS, SMPS	SP
DIODE			
D101	06200226	1N4148TA	SP
D102	06200226	1N4148TA	SP
D103	06200226	1N4148TA	SP
D104	06200226	1N4148TA	SP
D201	06200226	1N4148TA	SP
D202	06200226	1N4148TA	SP
D203	06200226	1N4148TA	SP
D301	06220070	1N4003TA	SP
D401	06220070	1N4003TA	SP
D402	06200226	1N4148TA	SP
D403	06200363	TVR-06J	SP
D404	06200363	TVR-06J	SP
D405	06200363	TVR-12-06J	SP
D406	06200226	1N4148T18	SP
D407	06200363	TVR-06J	SP
D501	06200226	1N4148TA	SP
D502	06200226	1N4148TA	SP
D503	06200226	1N4148TA	SP
D601	06200226	1N4148TA	SP
D702	06200235	1K34A TP-A	SP
D703	06200226	1N4148TA	SP

LOCATION NO.	PART NO.	DESCRIPTION	RE-MARKS
D704	06200226	1N4148TA	SP
D705	06200226	1N4148TA	SP
D706	06200226	1N4148TA	SP
D707	06200226	1N4148TA	SP
D708	06200226	1N4148TA	SP
D801	06200226	1N4148TA	SP
D802	06200226	1N4148TA	SP
D803	06200455	R10J, (1A1600V)	SP
D804	06220202	RGP15J	SP
D805	06200363	TVR-06J	SP
D806	06200363	TVR-06J	SP
D807	06220070	1N4003TA	SP
D851	06200124	1N4005GP	SP
D852	06200124	1N4005GP	SP
D853	06200124	1N4005GP	SP
D854	06200124	1N4005GP	SP
ZD401	06220124	EQA02-17BV	SP
ZD701	06220234	ZENER Z9.1BMTA	SP
ZD702	06220300	ZENER Z20BMTA	SP
ZD703	167-006B	IC, KA33V	SP
ZD704	06220228	ZENER Z5.6BMTA	SP
ZD705	06220228	ZENER Z5.6BMTA	SP
TRANSISTOR			
Q101	06120239	KTC1815-O	SP
Q102	06120239	KTC1815-O	SP
Q151	06120239	KTC1815-O	SP
Q161	06120239	KTC388A	SP
Q201	06120239	KTC1815-O	SP
Q401	06120225	KTC2230A(Y)	SP
Q402	06130134	2SD1555	SP
Q701	06120239	KTC1815-O	SP
Q702	06120111	KTC1815-O	SP
Q703	06179461	KTC1959-Y	SP
Q704	06120252	KTA1015-O	SP
Q705	06120249	KTC1815-GR	SP
Q706	06120252	KTA1015-O	SP
Q707	06120239	KTC1815-O	SP
Q708	06120252	KTA1015-O	SP
Q709	06120252	KTA1015-O	SP
Q710	06120252	KTA1015-O	SP
Q711	06120252	KTA1015-O	SP
Q712	06120252	KTA1015-O	SP
Q713	06120173	KTC2120-O	SP
Q714	06120213	KTC2236A-O	SP
Q801	06120334	Transistor SIP MOS BUZ-90	SP
Q851	06120236	KTC2482	SP
IC			
IC101	06300357	IC, LA7520	SP
IC201	06300170	IC, TEA1014	SP
IC301	06300360	IC, LA7830	SP
IC401	06300381	IC, TDA2579	SP
IC402	06300218	IC, GL7812	SP
IC501	06300493	TDA 3561A	SP
IC601	06300492	IC, TDA3592A	SP
IC701	06300728	IC, SAA1293	SP
IC702	06300729	MDA2062	SP

LOCATION NO.	PART NO.	DESCRIPTION	RE-MARKS
IC801	06300777	IC, TDA4605	SP
MISCELLANEOUS			
SW301	140-111C	SWITCH, JRS-1301	SP
SW701	140-277A	SWITCH, 12KEY	SP
SW702	140-219A	SWITCH, TACT S/W UNIT4P	SP
SW851	140-278A	SWITCH, MAIN 70060-055	SP
X501	156-007A	OSC, X-TAL 8.86MHZ	SP
X601	156-006A	OSC, X-TAL 4.43MHZ	SP
X701	156-005B	OSC, 4MHZ	SP
TH851	163-012A	THERMISTOR, PTH 451A102 BG180M290	SP
Z101	166-191A	FILTER, SAW OFWG1956	SP
Z102	166-126D	FILTER, 5.5MC248	SP
Z103	166-031B	FILTER CERAMIC TPS 5.5MB	SP
Z104	166-031E	FILTER TPS 6.5MB	SP
Z105	166-002D	FILTER, CERAMIC SFE 5.5MB	SP
Z151	166-002D	FILTER, CERAMIC SFE 5.5MB	SP
P401	366-033H	PIN, FLAT WAFER 6P	SP
P501	366-921D	PIN, WAFER IL-G5	NSP
P851	366-043B	PIN ASSY, PLUG(2P)	SP
P852	366-043B	PIN ASSY, PLUG(2P)	SP
PS01	366-921B	PIN WAFER IL-G3	SP
PS02	366-921B	PIN WAFER IL-G3(2.5S)	SP
PS402	366-921B	PIN WAFER IL-G3(2.5S)	SP
RL801	141-018A	RELAY, DG12DI-OM)	SP
SCART	381-090A	21 PIN PERI-SOCKET	SP

3. CPT P.C.BOARD (110-A31P)

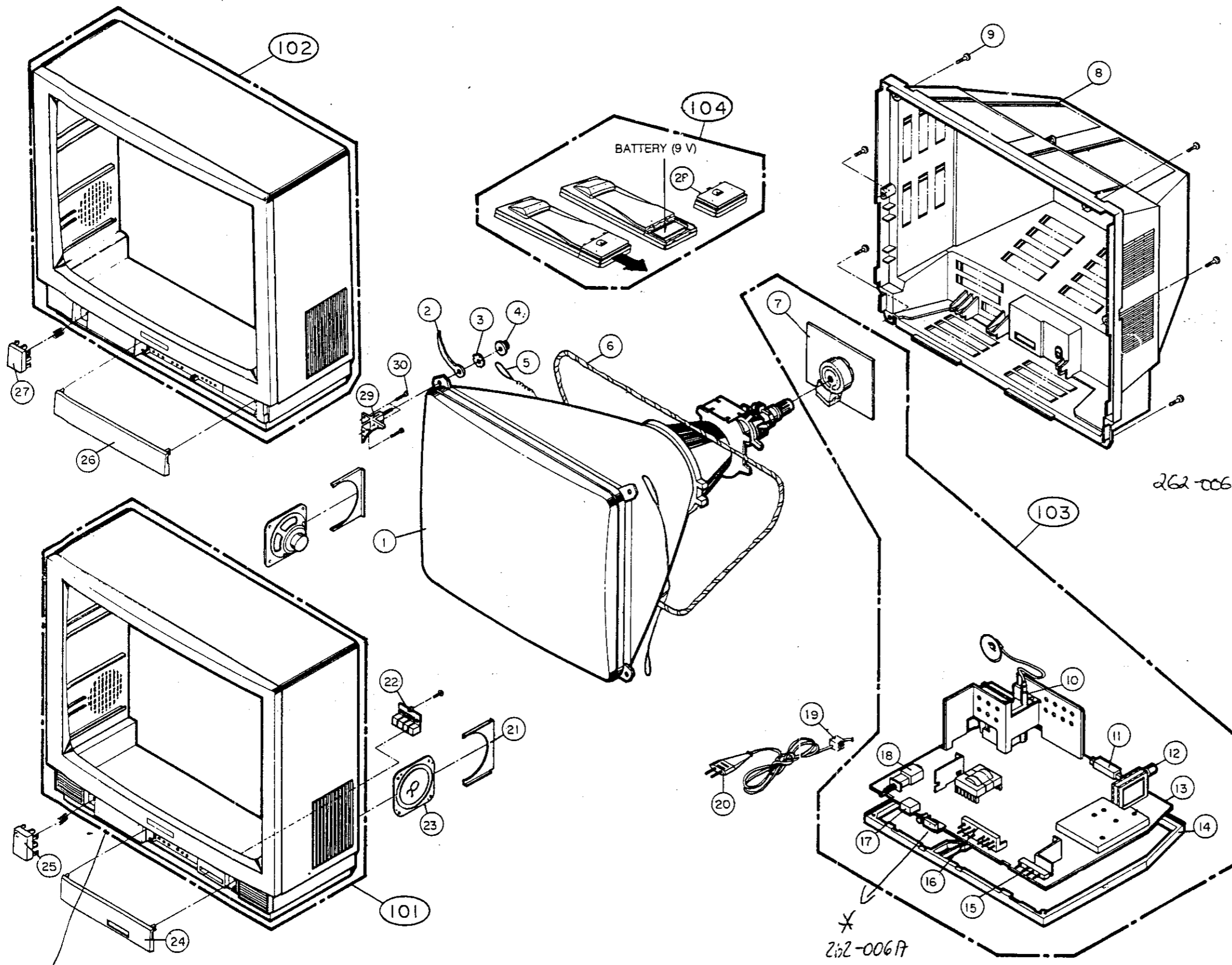
RESISTOR			
R901	01157073	RD, 100 ohm 1/8W	SP
R902	01157073	RD, 100 ohm 1/8W	SP
R903	01157073	RD, 100 ohm 1/8W	SP
R904	01332119	RS, 8.2K ohm 1W	SP
R905	01332119	RS, 8.2K ohm 1W	SP
R906	01332119	RS, 8.2K ohm 1W	SP
R907	01154107	RD, 2.7K ohm 1/2W	SP
R908	01154107	RD, 2.7K ohm 1/2W	SP
R909	01154107	RD, 2.7K ohm 1/2W	SP
R910	01157103	RD, 1.8K ohm 1/8W	SP
R911	01157103	RD, 1.8K ohm 1/8W	SP
R912	01157103	RD, 1.8K ohm 1/8W	SP
R913	01157087	RD, 390 ohm 1/8W	SP
R914	01157087	RD, 390 ohm 1/8W	SP
R915	01157087	RD, 390 ohm 1/8W	SP
R916	01157079	RD, 180 ohm 1/8W	SP
R917	01157073	RD, 100 ohm 1/8W	SP
R921	01157073	RD, 100 ohm 1/8W	SP
R922	01157073	RD, 100 ohm 1/8W	SP
R923	01157073	RD, 100 ohm 1/8W	SP
VR901	180-428G	RV, 5KB	SP
VR902	180-428G	RV, 5KB	SP
VR903	180-428G	RV, 5KB	SP
VR904	180-428C	RV, 500B	SP
VR905	180-428C	RV, 500B	SP

LOCATION NO.	PART NO.	DESCRIPTION	RE-MARKS
CAPACITOR			
C901	02300147	CC, 300pF ± 5%	SP
C902	02300146	CC, 270pF ± 5%	SP
C903	02300146	CK, 270pF ± 5%	SP
C904	08110317	CE, 47uF/16V	SP
C905	02201561	CK, 0.0012uF/2KV ± 10%	SP
DIODE			
D901	06200226	1N4148TA	SP
D902	06200226	1N4148TA	SP
D903	06200226	1N4148TA	SP
TRANSISTOR			
Q901	06120218	KTC2482	SP
Q902	06120218	KTC2482	SP
Q903	06120218	KTC2482	SP
MISCELLANEOUS			
P901	366-009B 381-094C	PIN PLUG CPT SOCKET, PCS-624	SP

4. MISCELLANEOUS

LOCATION NO.	PART NO.	DESCRIPTION	RE-MARKS
CPT	150-243S	COIL, DEGAUSSING	SP
	120-035H	SPEAKER, 090A25864K 14	SP
	174-179A	CORD, POWER	SP
	105-045H	TRANSMITTER, ASSY	SP
	2055-00081A	A48KCS12XX-037N7KE	SP
	482-858M	Owner's Manual	SP

EXPLODED VIEW



SP : Serviceable Parts List
 NSP : Not Serviceable Parts List

NO	DESCRIPTION	PART-NO	REMARKS
1	CPT	2055-00081A	SP
2	HOLDER, METER ASSY	341-355A	NSP
3	WASHER, CPT FIXING	334-335A	NSP
4	NUT, HNW508	03120104	NSP
5	LEAD SET, EARTH	170-326T	NSP
6	COIL, DEGAUSSING	150-243S	NSP
7	PCB ASSY, CPT	110-A31P	SP
8	COVER ASSY, BACK	303-C74A	SP
9	SCREW(TTS+4*16)	03232305	SP
10	FBT	154-177B	SP
11	21 PIN PERI-SOCKET	381-090A	SP
12	TUNER	113-105H	SP
13	PCB ASSY, MAIN	110-K30A	SP
14	FRAME, MAIN	312-258A	SP
15	LED DISPLAY ASSY	262-066A	SP
16	SWITCH, 12 KEY	140-777A	SP
17	PRE-AMP	106-042A	SP
18	SWITCH, MAIN	140-278A	SP
19	HOLDER, POWER CORD	341-242F	SP
20	CORD, POWER	174-171A	SP
21	SUPPORTER, SPEAKER	343-544A	NSP
22	SWITCH, TACT	140-219A	SP
23	SPEAKER	120-C26A	SP
24	DOOR, CONTROL(CBT-9742E)	315-402A	SP
25	BUTTON, POWER(CBT-9742E)	441-111B	SP
26	DOOR, CONTROL(CBT-9745E)	315-402A	SP
27	BUTTON, POWER(CBT-9745E)	441-111B	SP
28	BATTERY COVER, REMOTE CONTROL	303-C58A	SP
29	METAL, CPT FIXING	430-603A	NSP
30	SCREW, TTS1+4*16	03232305	NSP

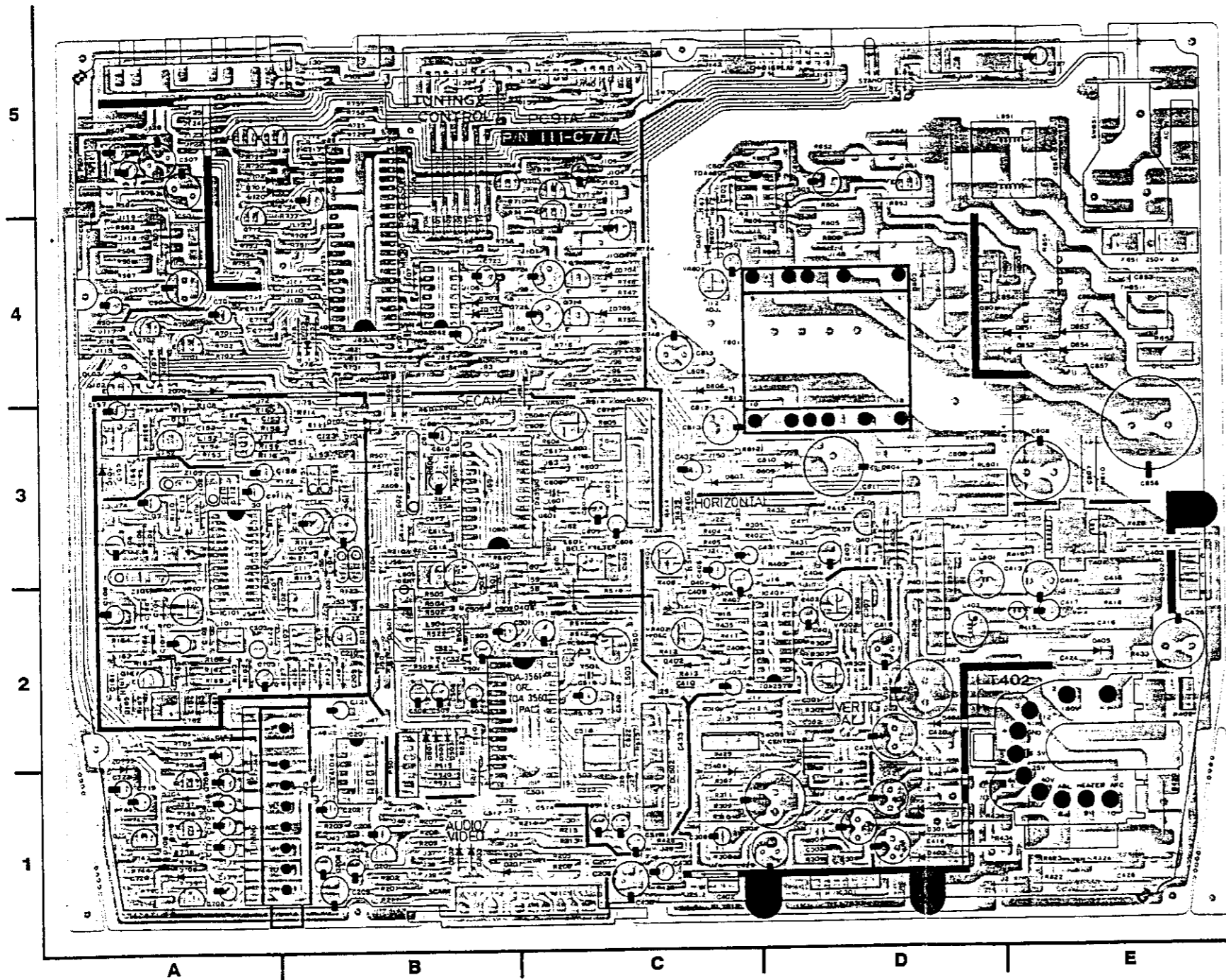
SUB ASSY

NO	DESCRIPTION	PART-NO	REMARKS
101	CABINET ASSY, FRONT (CBT-9742E)	300-819A	SP
102	CABINET ASSY, FRONT (CBT-9745E)	300-820A	SP
103	CABINET ASSY, MAIN	309-734A	SP
104	REMOTE CONTROL	105-045H	SP

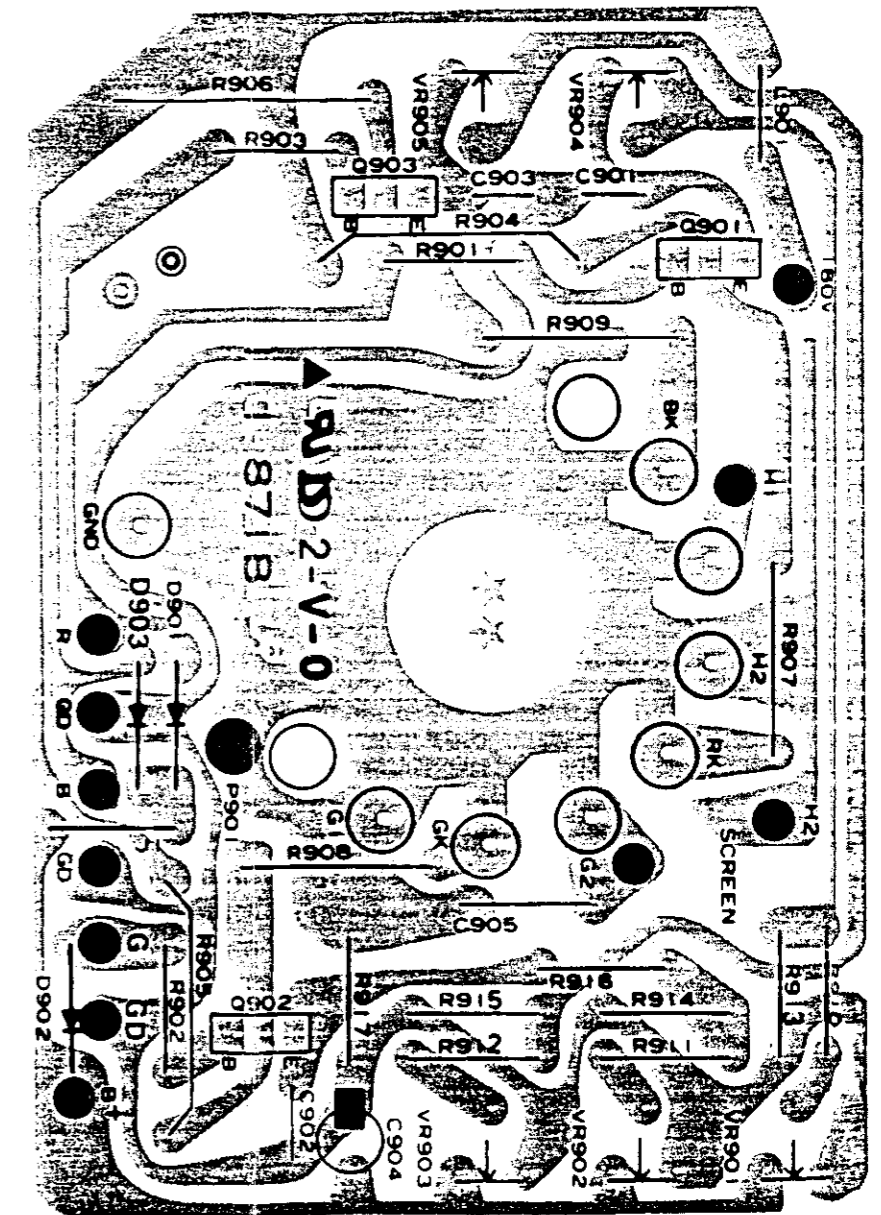
Display 262-066A

PRINTED CIRCUIT BOARD

MAIN P.C. Board (Component Side)



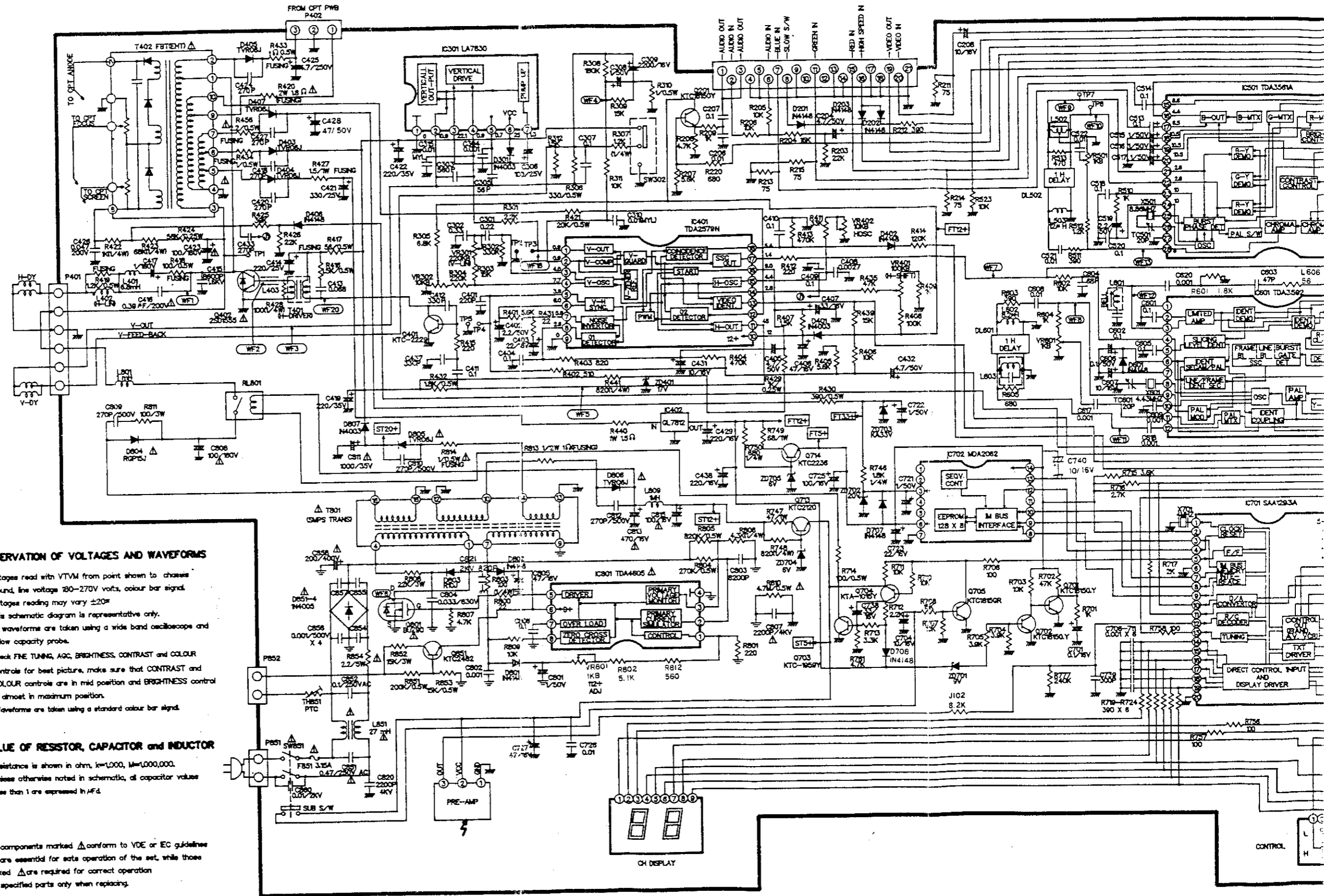
CPT P.C. Board (Component Side)



COMPONENT LOCATION GUIDE

(Refer to page 11-12)

R101 2A	R207 1B	R428 3E	R704 4A	R751 4A	C103 2A	C208 1B	C501 2B	C708 4B	CS05 4A	D402 2C	Q707 1A
R102 2A	R208 1B	R429 1C	R705 4A	R752 4A	C104 2A	C209 1B	C502 2B	C709 4B	CS06 5A	D403 1D	Q708 1A
R103 2A	R209 1B	R430 3D	R706 4B	R753 4A	C106 2A	C210 2B	C503 2B	C710 4B	CS07 5A	D404 2D	Q709 1A
R104 3A	R210 3B	R431 3D	R707 5C	R754 4A	C107 3A	C301 2D	C504 2B	C711 4B	CS08 5A	D405 2E	Q710 5A
R105 1A	R211 1B	R432 3D	R708 5C	R755 4A	C108 3A	C302 2D	C505 2B	C712 5B	TS501 2C	D406 2B	Q711 5A
R106 3A	R212 1B	R433 2E	R709 4A	R756 4B	C109 2A	C303 1D	C506 2B	C713 5B	TS601 3C	D407 1D	Q712 4A
R107 4A	R213 1C	R434 1D	R710 5B	R757 5B	C110 3A	C304 1D	C507 2B	C714 5B	L101 2A	D501 1B	Q713 4C
R108 3A	R214 1B	R435 2C	R711 5B	R758 5B	C111 3A	C305 1D	C508 2B	C715 4A	L102 2A	D502 1B	Q714 4C
R109 3A	R215 1C	R436 2D	R712 5C	R759 4A	C112 3A	C306 1D	C509 2B	C716 4A	L103 2A	D503 1B	Q801 4D
R110 3A	R301 1D	R439 3C	R713 5C	R800 4E	C113 3A	C307 2D	C510 1B	C717 4A	L104 2B	D701 5A	Q851 5D
R111 3B	R302 2D	R441 1D	R714 4C	R801 5C	C114 3B	C308 1C	C511 2C	C718 4A	L105 3A	D702 5A	IC101 2A
R112 3A	R303 2D	R501 2B	R715 4B	R802 4C	C115 3B	C309 1C	C512 1B	C719 1A	L151 3A	D703 4A	IC201 1B
R114 3A	R304 2D	R502 2B	R716 4C	R803 4D	C116 3B	C310 2C	C513 1C	C720 1A	L152 3A	D704 1A	IC301 1D
R115 3A	R305 3C	R503 2B	R717 4B	R804 5D	C117 2A	C401 2D	C514 1C	C721 4B	L153 3B	D705 1A	IC401 2D
R116 3A	R306 2D	R504 2B	R718 4A	R805 4D	C118 3A	C402 2D	C515 1C	C722 1A	L161 2A	D706 1A	IC402 1C
R117 3A	R307 1C	R505 2B	R719 5B	R806 4C	C119 2B	C403 3D	C516 1C	C723 4B	L162 2A	D707 4B	IC501 1B
R118 3A	R308 1C	R506 3B	R720 5B	R807 4E	C120 3A	C404 2D	C517 1C	C724 4B	L163 2A	D801 4C	IC601 3B
R119 2A	R309 1C	R507 3B	R721 5B	R808 4D	C121 2B	C405 2C	C518 2C	C725 4B	L402 2D	D802 4D	IC701 4B
R120 2A	R310 1C	R508 3B	R722 5B	R809 5C	C122 2A	C406 2C	C519 2C	C726 5E	L403 3E	D803 4D	IC702 4B
R121 3A	R311 1C	R509 2B	R723 5B	R810 3E	C123 3B	C407 2C	C520 2C	C727 5E	L501 2B	D804 3D	IC801 5C
R122 2B	R312 2D	R510 2C	R724 5B	R811 3D	C151 3A	C408 2C	C521 2C	C801 4C	L502 1C	D805 3C	ICS01 4A
R123 2B	R401 3D	R511 2C	R725 5B	R812 3C	C152 3A	C409 2C	C522 1C	C802 4C	L503 2C	D806 4C	SW301 1C
R125 2B	R402 3C	R513 1C	R726 5B	R813 3C	C153 3A	C410 2C	C523 2B	C803 5C	L504 2B	D807 3C	SW701 5C
R126 2A	R403 2D	R514 3C	R727 5B	R851 5D	C154 3A	C411 3D	C524 2B	C804 4D	L601 3C	D851 4E	SW702 5A
R127 2A	R404 3C	R515 4B	R728 5B	R852 5D	C155 3A	C412 3D	C601 3C	C805 5D	L602 3C	D852 4E	SW851 5E
R128 2A	R405 3C	R516 2C	R729 5A	R853 5D	C156 3A	C413 2E	C602 3C	C806 5D	L603 3C	D853 4E	X501 2C
R153 3A	R406 3C	R517 3B	R730 5A	R854 4E	C157 3A	C414 2E	C603 3B	C807 3E	L604 3B	D854 4E	X601 3C
R154 3A	R407 2C	R518 2B	R731 4B	RS01 4A	C158 3A	C415 2E	C604 3C	C808 3E	L605 2B	ZD401 1C	X701 4B
R155 3A	R408 3C	R519 1B	R732 4B	RS02 4A	C161 2A	C416 2E	C605 3C	C809 3D	L801 2D	ZD701 4A	TH851 4E
R156 3A	R409 2C	R520 1B	R733 5A	RS03 4A	C162 2A	C417 3E	C606 3C	C810 3C	L851 5E	ZD702 4B	Z101 2A
R157 3A	R411 2C	R521 1B	R734 5A	RS04 5A	C163 2A	C418 1D	C607 3C	C811 3D	L809 4C	ZD703 1A	Z102 3A
R158 3A	R412 2C	R522 2B	R735 1A	RS05 5A	C164 2A	C420 1D	C608 3C	C812 3C	DL501 2B	ZD705 4C	Z103 2B
R159 3A	R413 2C	R523 1B	R736 1A	RS06 4A	C165 2A	C421 1D	C609 3C	C813 3C	DL502 1C	Q101 2B	Z104 2B
R160 3A	R414 3C	R601 3B	R737 1A	RS07 4A	C166 2A	C422 1D	C610 3B	C814 3E	DL601 3C	Q102 4A	Z105 3A
R161 2A	R415 3D	R602 3C	R738 1A	RS08 4A	C167 1A	C423 2D	C611 3B	C815 4C	T401 3E	Q151 3A	Z151 3B
R163 2A	R416 3E	R603 3C	R739 1A	RS09 5A	C168 1A	C424 2E	C612 3B	C851 5E	T402 1E	Q152 3A	Z152 3B
R164 2A	R417 3D	R604 3C	R740 1A	VR101 2A	C169 1A	C425 2E	C613 3B	C852 5D	T801 4D	Q151 3A	P401 2D
R165 2A	R418 2E	R605 3C	R741 1A	VR301 2A	C170 1A	C426 1E	C614 3B	C853 4E	D101 3A	Q161 2A	P402 2E
R166 2A	R419 2E	R606 3B	R742 1a	VR302 2D	C171 1A	C427 1D	C615 3B	C854 4E	D102 3B	Q201 1B	P501 1B
R167 2A	R420 1E	R607 3B	R743 1A	VR401 3C	C172 1A	C428 1D	C616 3B	C855 4E	D103 4A	Q401 3D	P851 5E
R169 2A	R421 1D	R608 3B	R744 1A	VR402 2C	C173 1A	C429 1C	C617 3C	C856 4E	D104 3B	Q402 2E	P852 4E
R201 1B	R422 1E	R609 3B	R745 1A	VR501 2C	C202 1B	C430 1C	C618 3C	C857 4E	D151 3A	Q701 4A	PS01 5A
R202 1B	R423 1E	R610 3B	R746 4B	VR601 3C	C203 2A	C431 3C	C701 4A	C858 3E	D201 1B	Q702 4A	PS02 5B
R203 1B	R424 1E	R611 3B	R747 4C	VR602 2B	C204 1B	C432 3C	C704 5C	CS01 4A	D202 1B	Q703 5C	RL801 3D
R204 1B	R425 1C	R701 4A	R748 4C	VR801 4C	C205 1B	C433 2D	C705 4C	CS02 4A	D203 1B	Q704 5C	SCART 1B
R205 1C	R426 1C	R702 4A	R749 4C	C101 2A	C206 1C	C437 3D	C706 4B	CS03 5A	D301 1D	Q705 5B	SOCKET 1B
R206 1C	R427 1D	R703 4A	R750 4C	C102 2A	C207 1C	C438 1C	C707 4B	CS04 4A	D401 2C	Q706 1A	F851 4F



OBSERVATION OF VOLTAGES AND WAVEFORMS

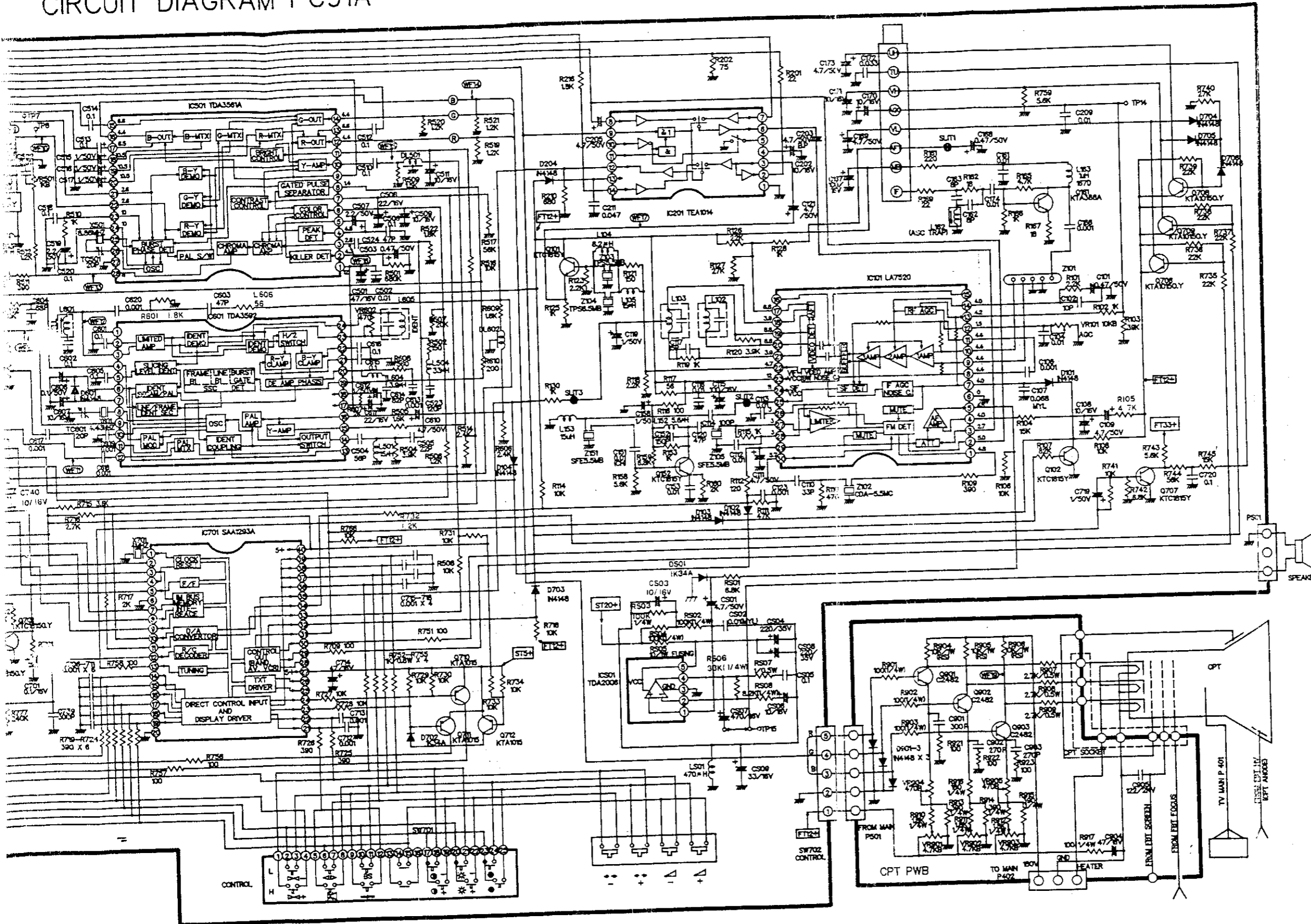
1. Voltages read with VTVM from point shown to chassis ground, line voltage 180-270V volts, colour bar signal.
2. Voltages reading may vary $\pm 20\%$
3. This schematic diagram is representative only.
4. All waveforms are taken using a wide band oscilloscope and a low capacity probe.
5. Check FINE TUNING, AGC, BRIGHTNESS, CONTRAST and COLOUR controls for best picture, make sure that CONTRAST and COLOUR controls are in mid position and BRIGHTNESS control is almost in maximum position.
6. Waveforms are taken using a standard colour bar signal.

VALUE OF RESISTOR, CAPACITOR and INDUCTOR

1. Resistance is shown in ohm, k=1,000, M=1,000,000.
2. Unless otherwise noted in schematic, all capacitor values less than 1 are expressed in pF.

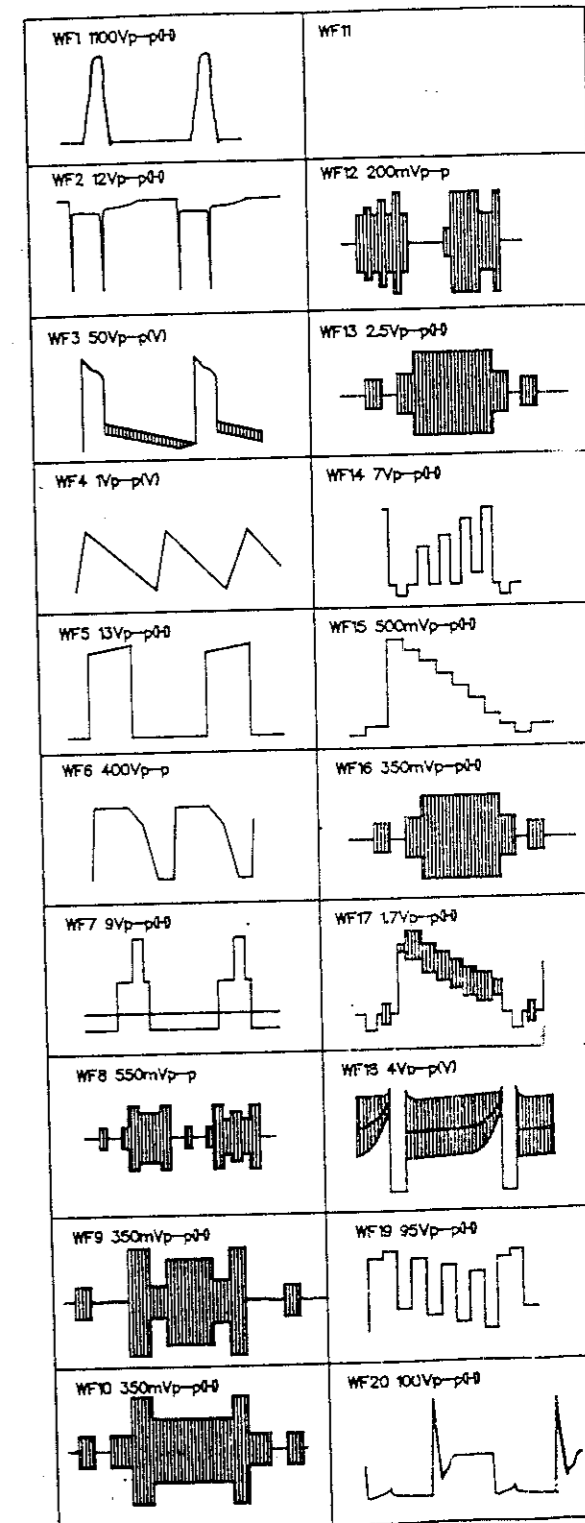
The components marked Δ conform to VDE or EC guidelines and are essential for safe operation of the set, while those marked \triangle are required for correct operation. Use specified parts only when replacing.

CIRCUIT DIAGRAM PC91A



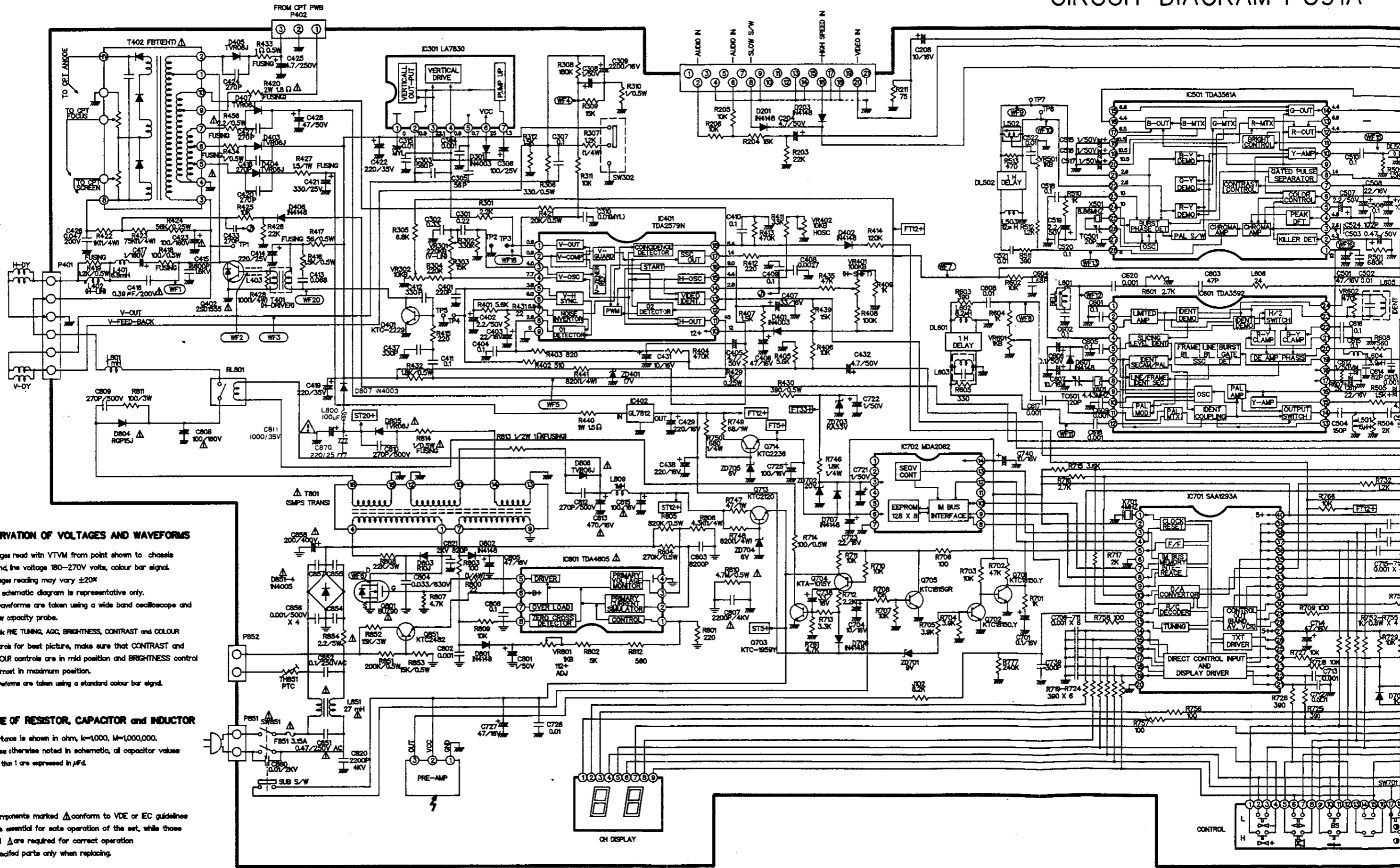
NOTICE

Since this is basic circuit diagram, the value of components and some partial connection are subject to be changed for improvement.



P/N : 484-721A

CIRCUIT DIAGRAM PC91A



OBSERVATION OF VOLTAGES AND WAVEFORMS

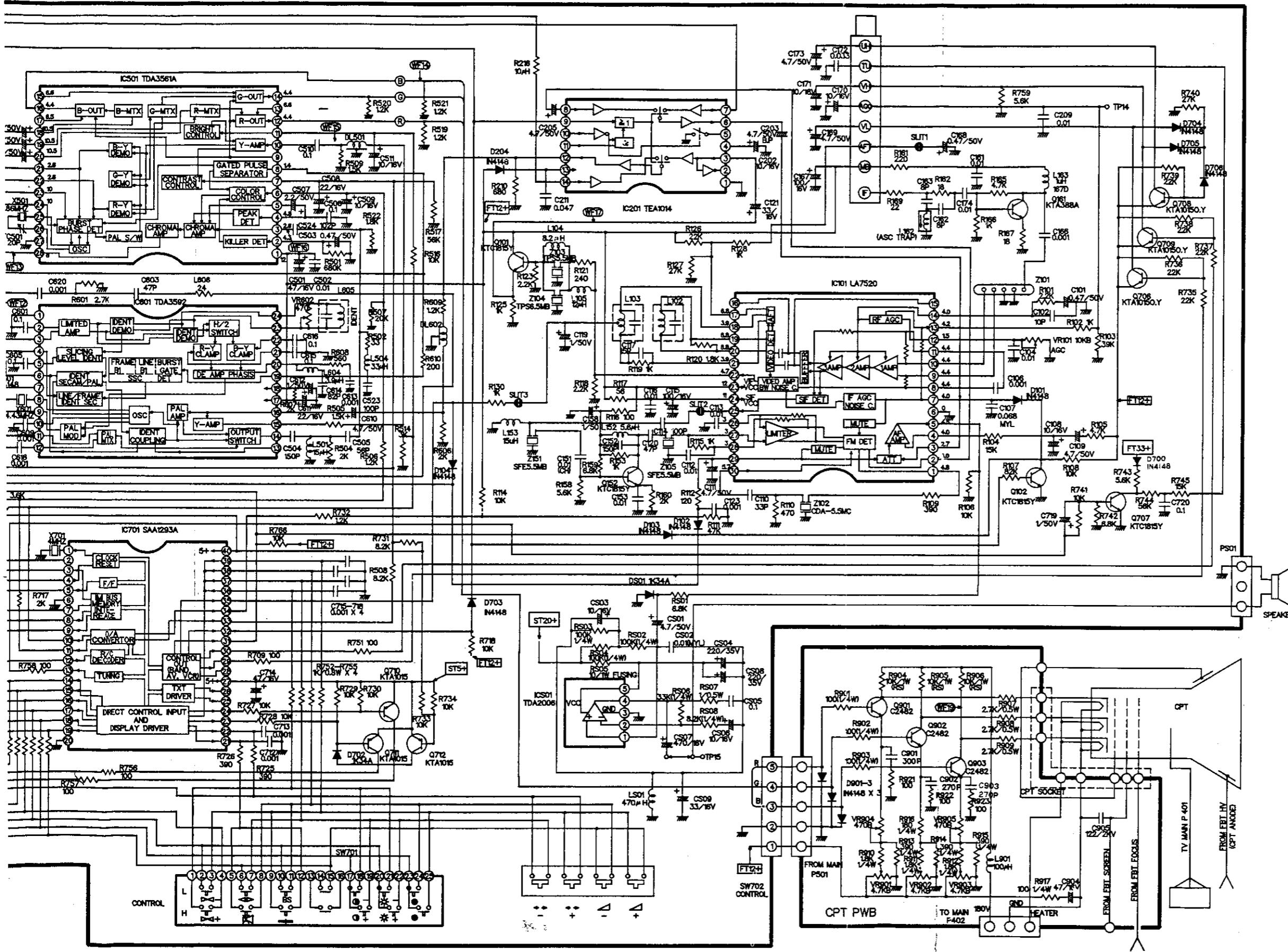
1. Voltages read with VTVM from point shown to chassis ground, line voltage 180-270V volts, colour bar signal.
2. Voltage reading may vary $\pm 20\%$
3. This schematic diagram is representative only.
4. All waveforms are taken using a wide band oscilloscope and a low capacity probe.
5. Check FINE TUNING, AGC, BRIGHTNESS, CONTRAST and COLOUR controls for best picture, make sure that CONTRAST and COLOUR controls are in mid position and BRIGHTNESS control is almost in maximum position.
6. Waveforms are taken using a standard colour bar signal.

VALUE OF RESISTOR, CAPACITOR and INDUCTOR

1. Resistance is shown in ohm, k=1,000, M=1,000,000.
2. Unless otherwise noted in schematic, all capacitor values less than 1 are expressed in μF .

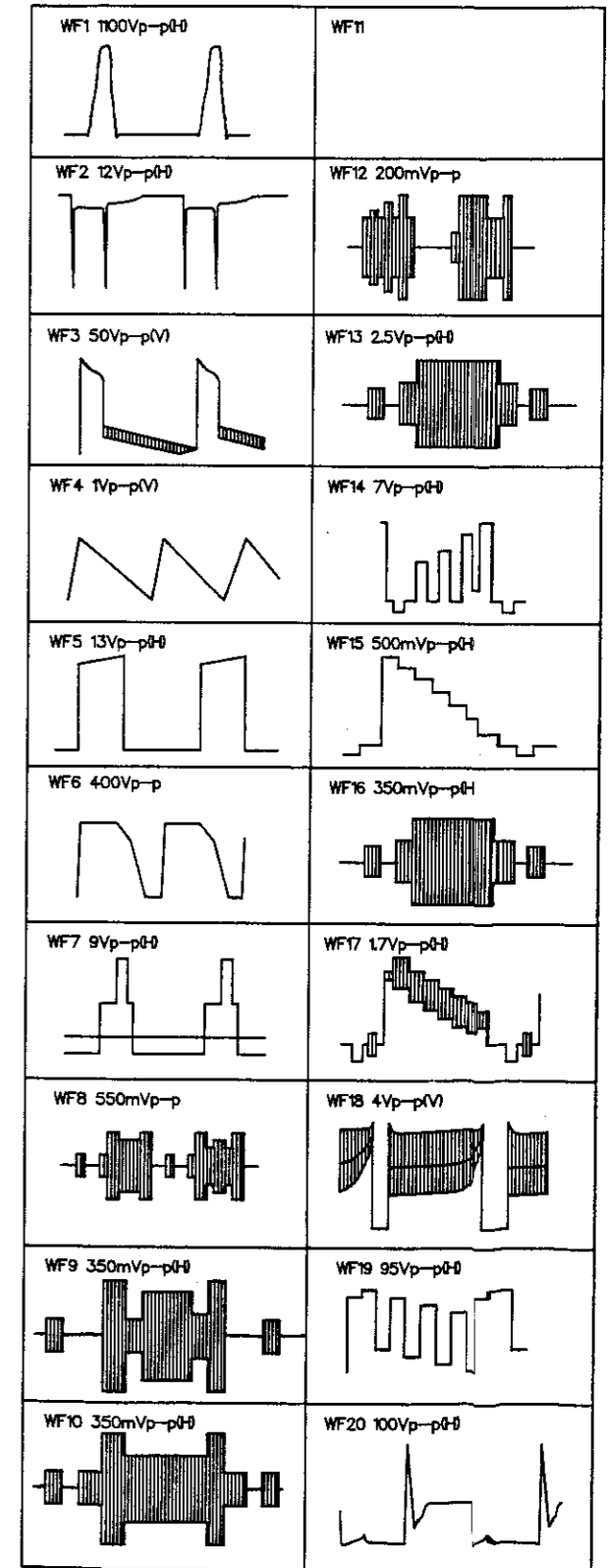
The components marked Δ conform to VDE or EC guidelines and are essential for safe operation of the set, while those marked \triangle are required for correct operation. Use specified parts only when replacing.

CIRCUIT DIAGRAM PC91A



NOTICE

Since this is basic circuit diagram, the value of components and some partial connection are subject to be changed for improvement.



P / N : 484-721F