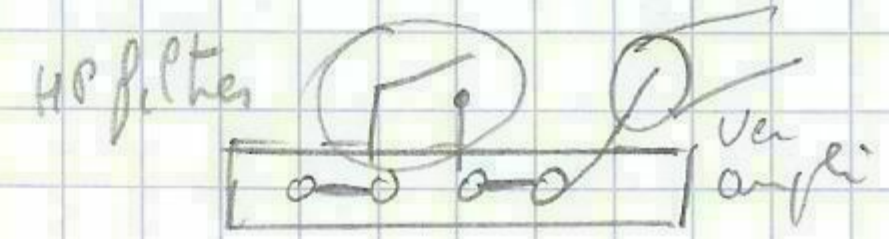
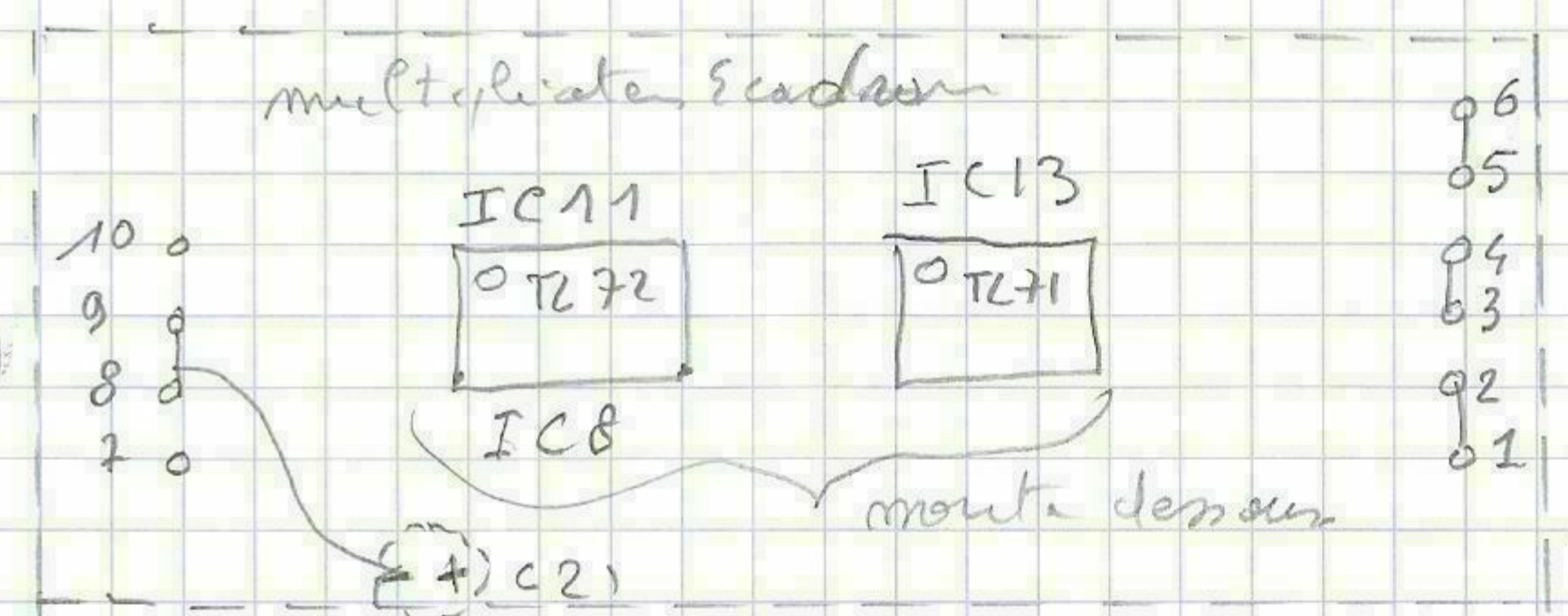
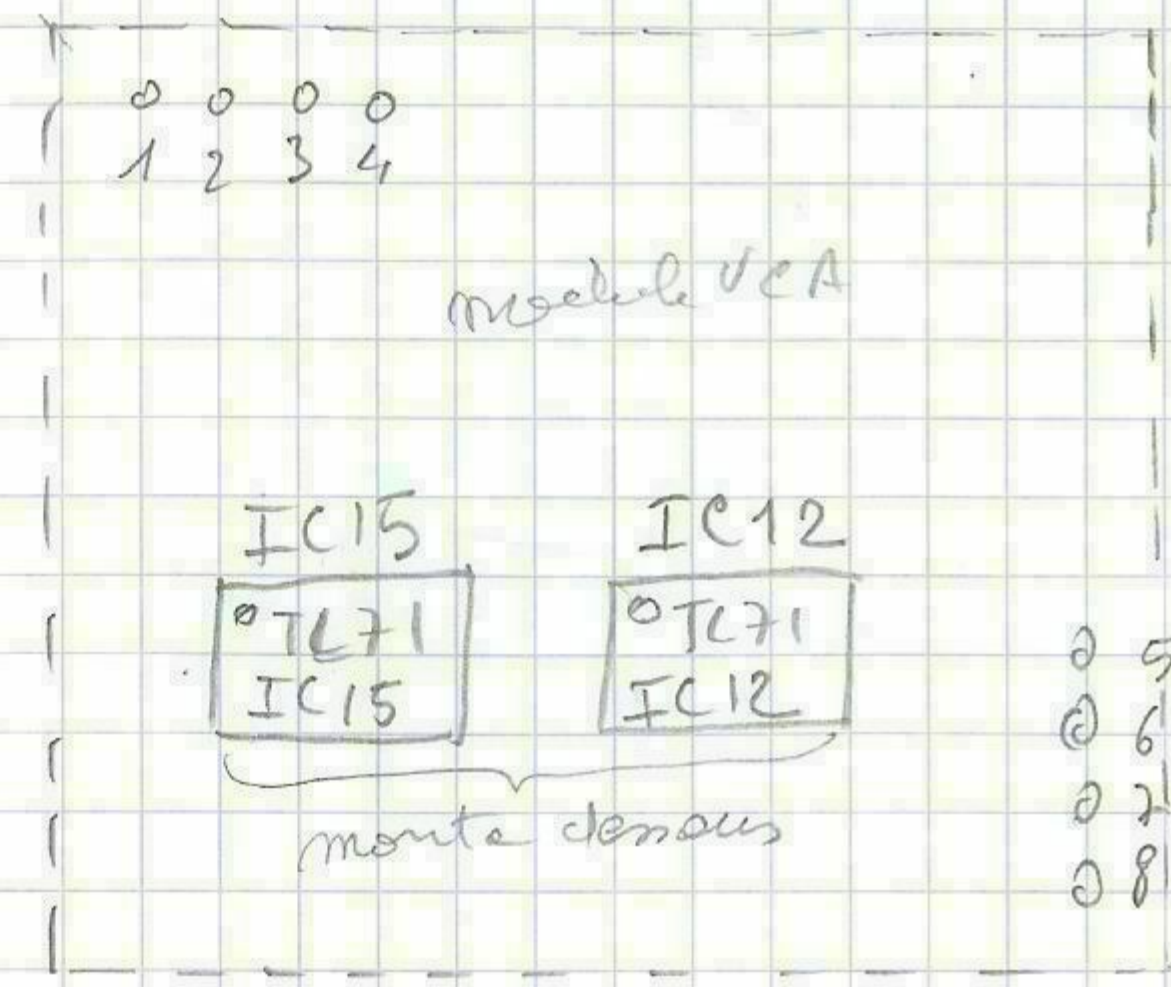
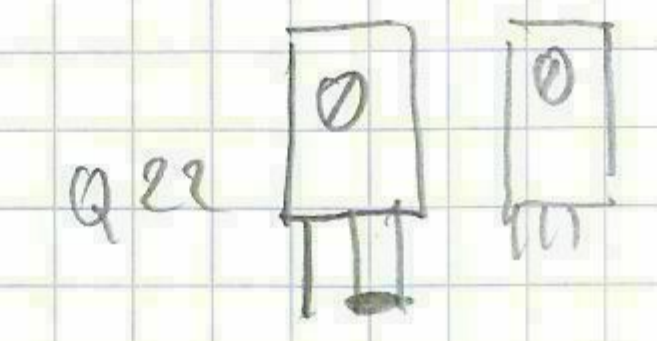


E.A.A. 4, PLACE DE LA MAIRIE, 91.620 NOZAY - FRANCE - TOUS DROITS DE REPRODUCTION RESERVES														
UPPER ASSY.										DATE				
. SQUARE 1000 .										Oct. 2nd 85				
POWER AND PROTECT. MOD. 35.448														



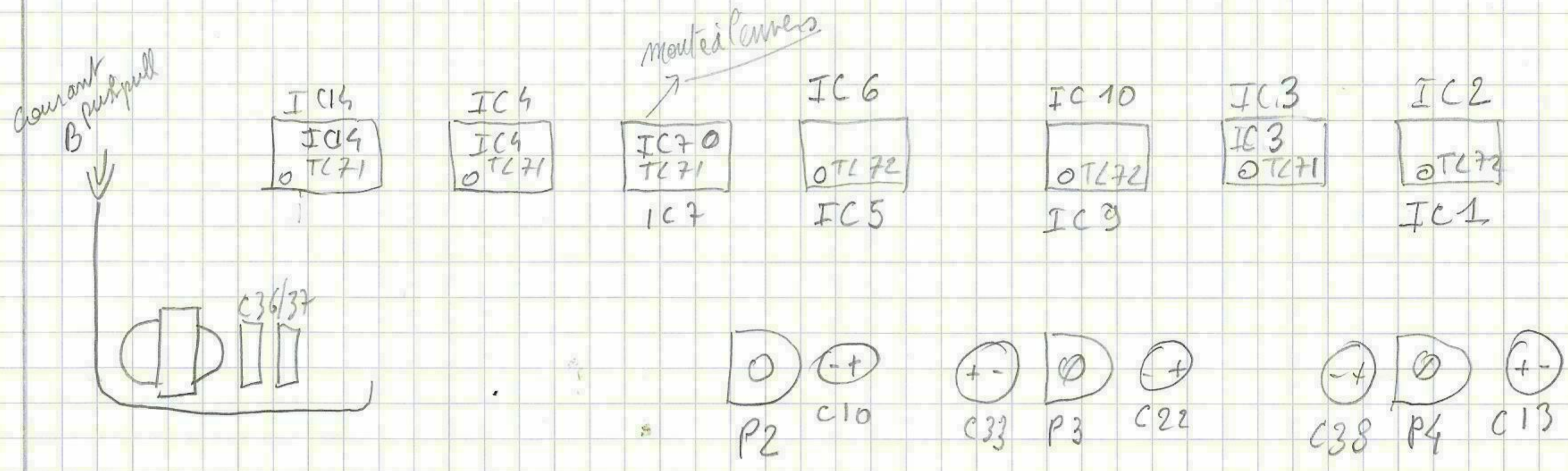


EAA  
carte principale  
partie seunita

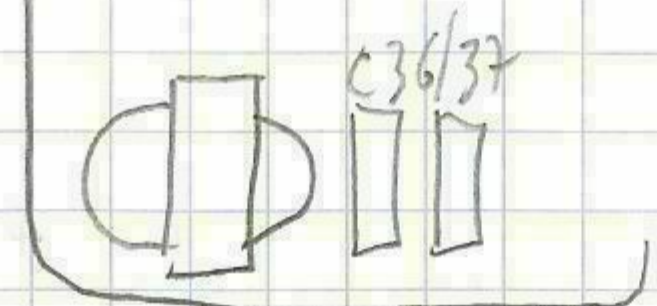


Vca carte  
entree  
face arriere

Vca  
Module  
0 4 -15 Relais  
0 3 +15  
0 2 et carte  
0 1 face arriere

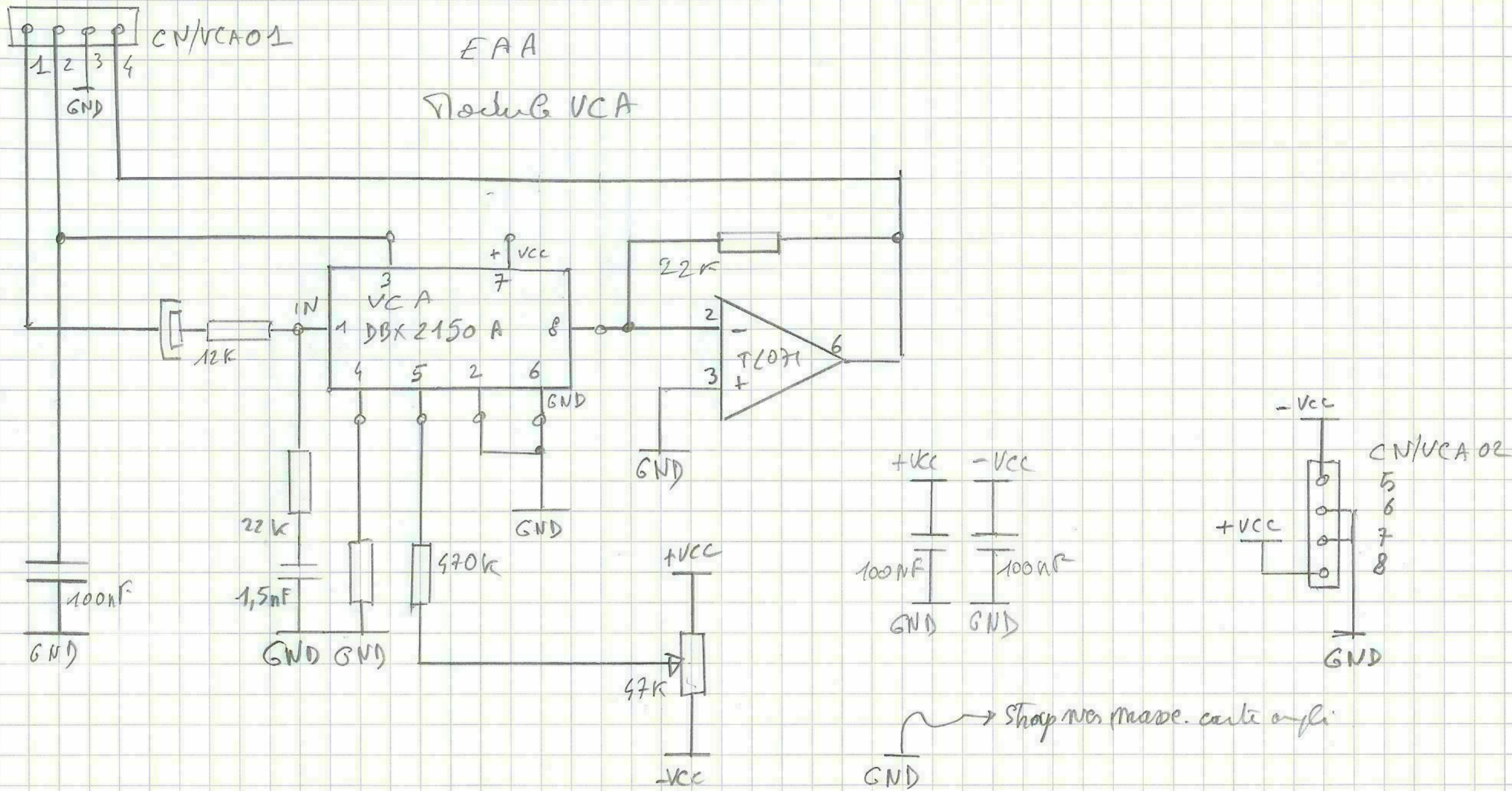


courant  
B push/pull

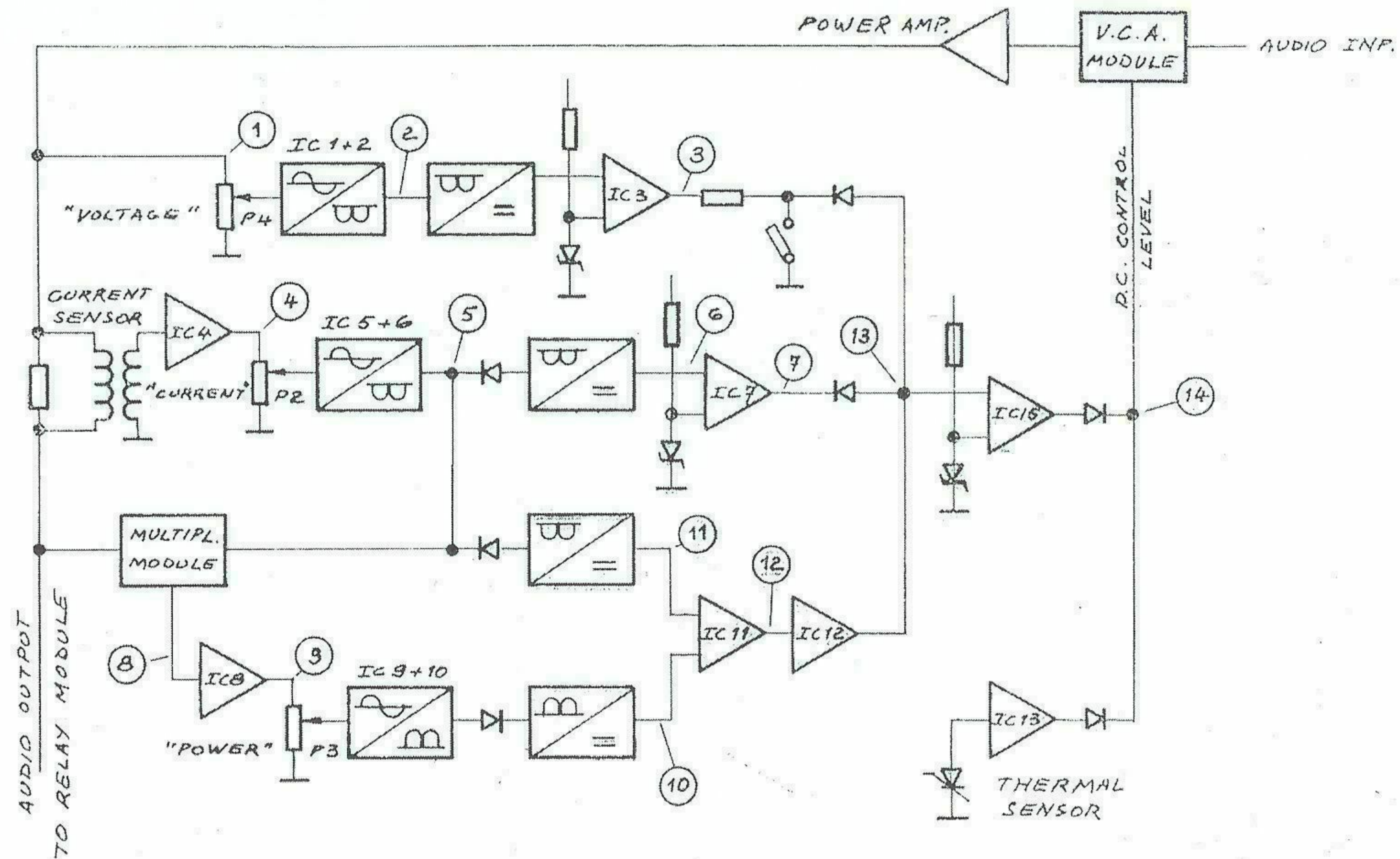


ATTN  
courant  
push/pull









OPERATING CONDITIONS

- Input freq. 1 kHz
- Output voltage 4.0 V AC
- Load impedance 2 ohms

Test Point	Signal scope		Level	
	Z <sub>L</sub> = ∞	Z = 2 Ω	A.C.	D.C.
1			5V	0
2			1,75V	3,5V
3	D.C.	D.C.	0	-4,7V
4	0		7,6V	0
5	0		1,9V	-4V
6	0	D.C.	0	-4,7V
7	D.C.	D.C.	0	-4,7V
8	0		4,9V	0
9	0		5,5V	0
10	0	D.C.	0	+10V
11	D.C.	D.C.	0	-4,6V
12	D.C.	D.C.	0	-10V
13	D.C.	D.C.	0	-4,5V
14	D.C.	D.C.	0	0

FOR LOCATION OF TEST POINTS 1 TO 14  
PLEASE REFER TO DRAWINGS 35.454 AND 35.45B

E.A.A. 4, PLACE DE LA MAIRIE, 91.620 NOZAY - FRANCE · TOUS DROITS DE REPRODUCTION RESERVES

UPPER ASSY.

- SQUARE 1000 -

DATE

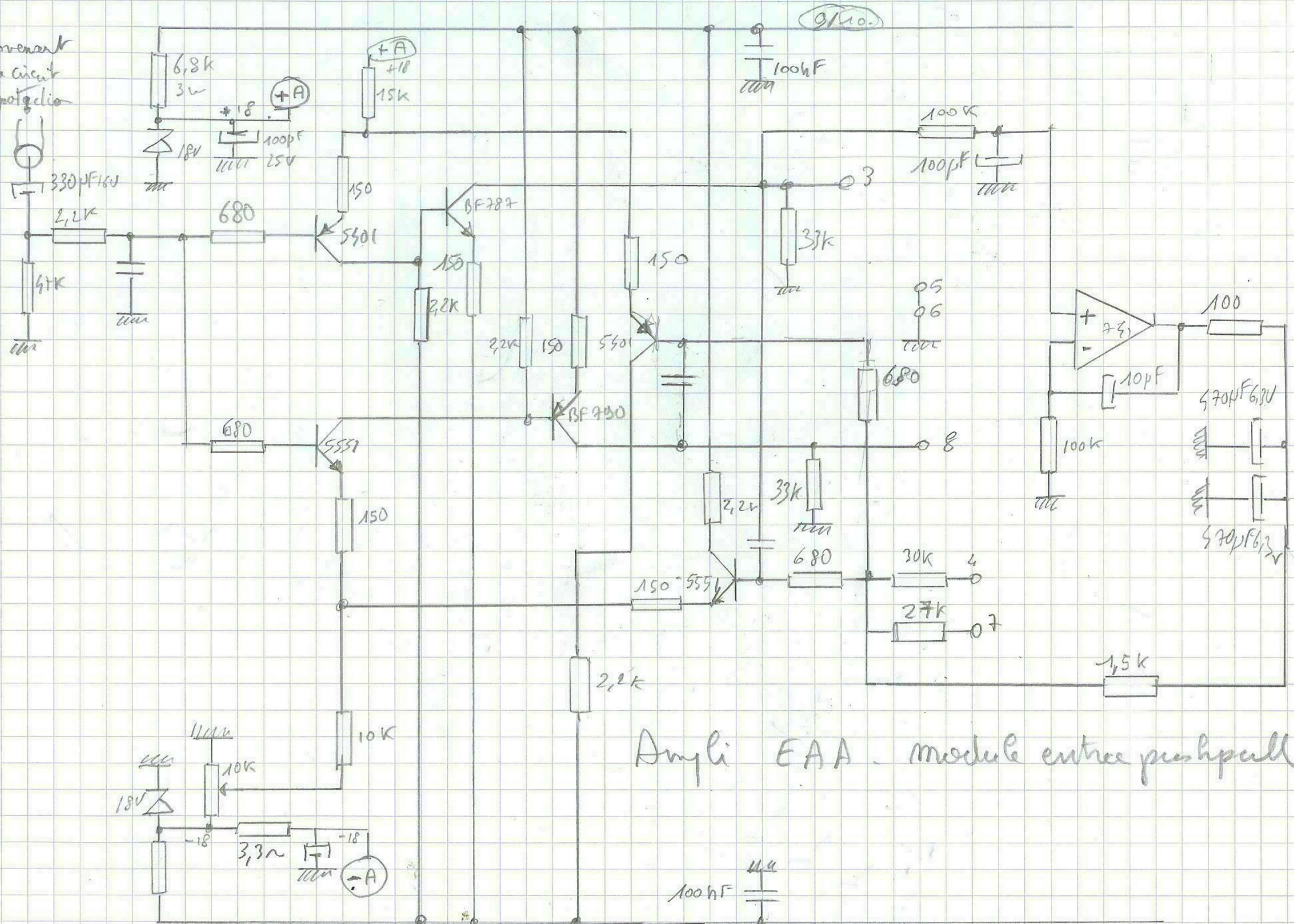
Nov. 28th 85

POWER AND PROTEC. MODULE  
BLOCK DIAGRAM AND TEST POINTS

4-5.471



provenant  
du circuit  
de protection



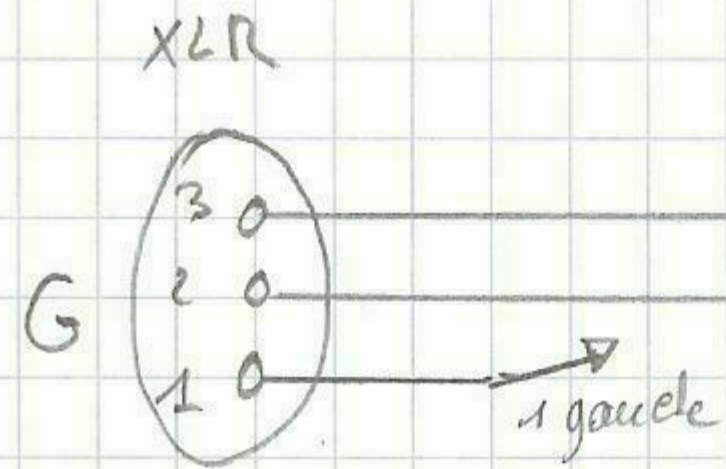
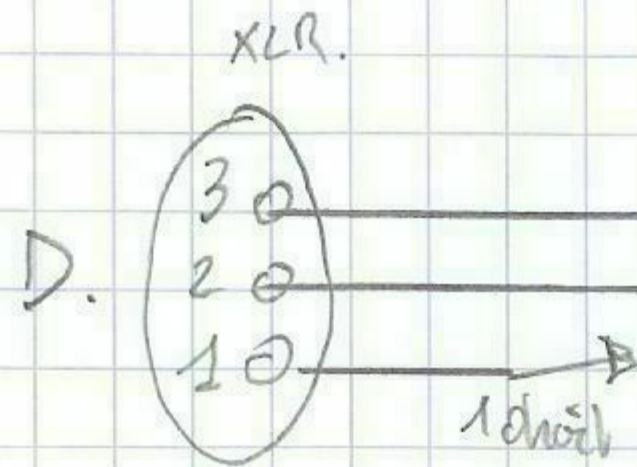
Ampli EAA module entrée pushpull

- |                |                          |               |
|----------------|--------------------------|---------------|
| 2N5501 PNP     | BD941 NPN ECA            | 2N3584 NPN    |
| 2N5551 NPN EBC | BF787 NPN 250V, 0.1A, 2W | 2N6212 PNP    |
|                | BF790 PNP 250V, 0.1A, 2W | MJ15024 = NPN |
|                |                          | MJ15025 = PNP |

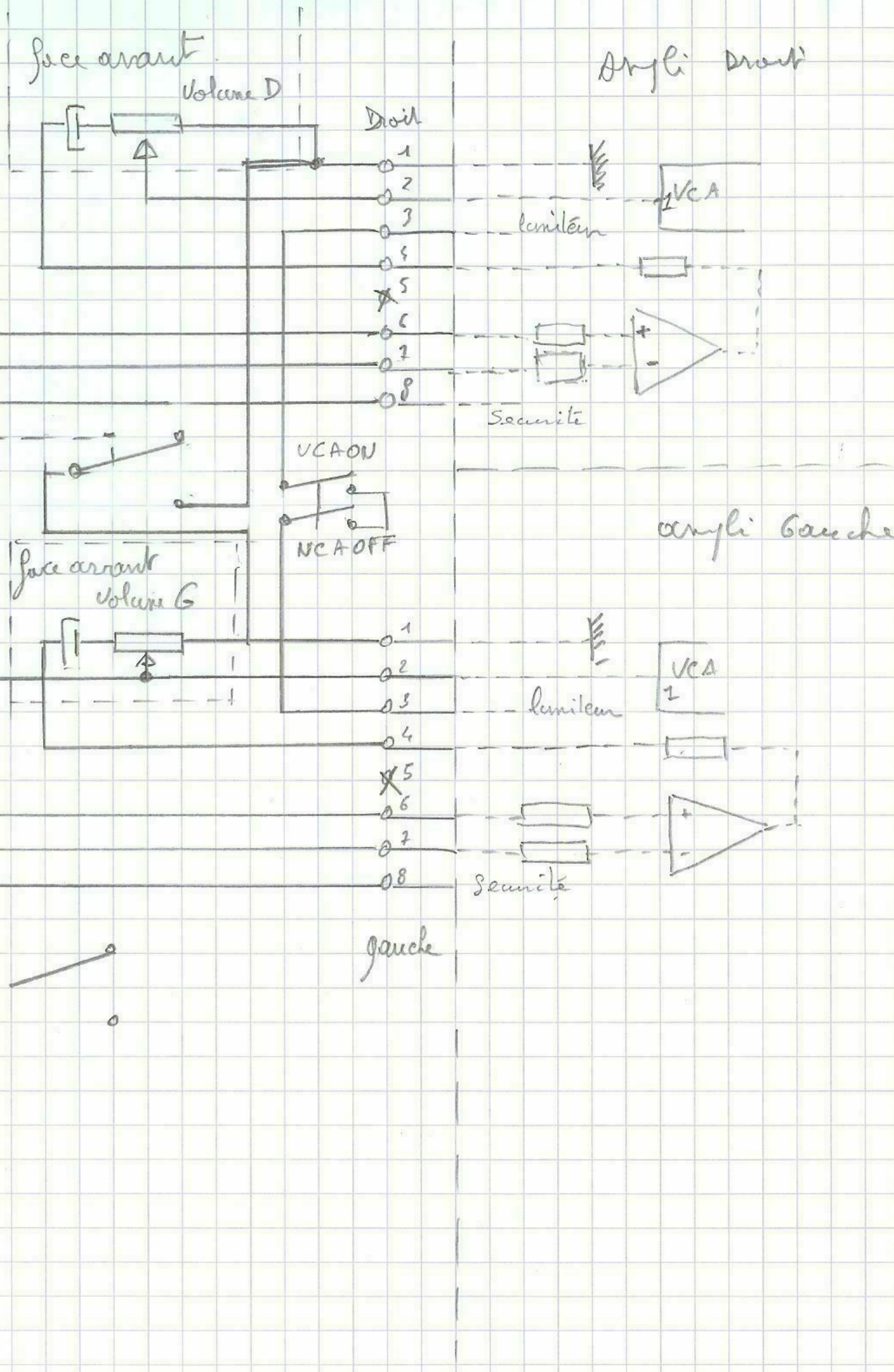


EAA

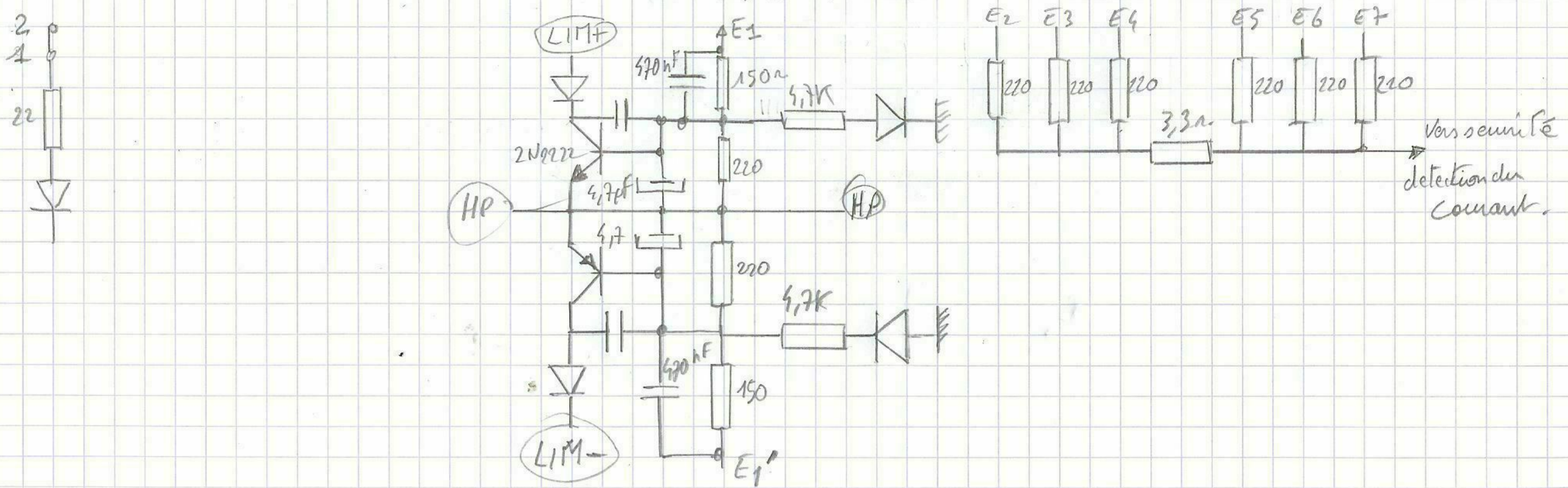
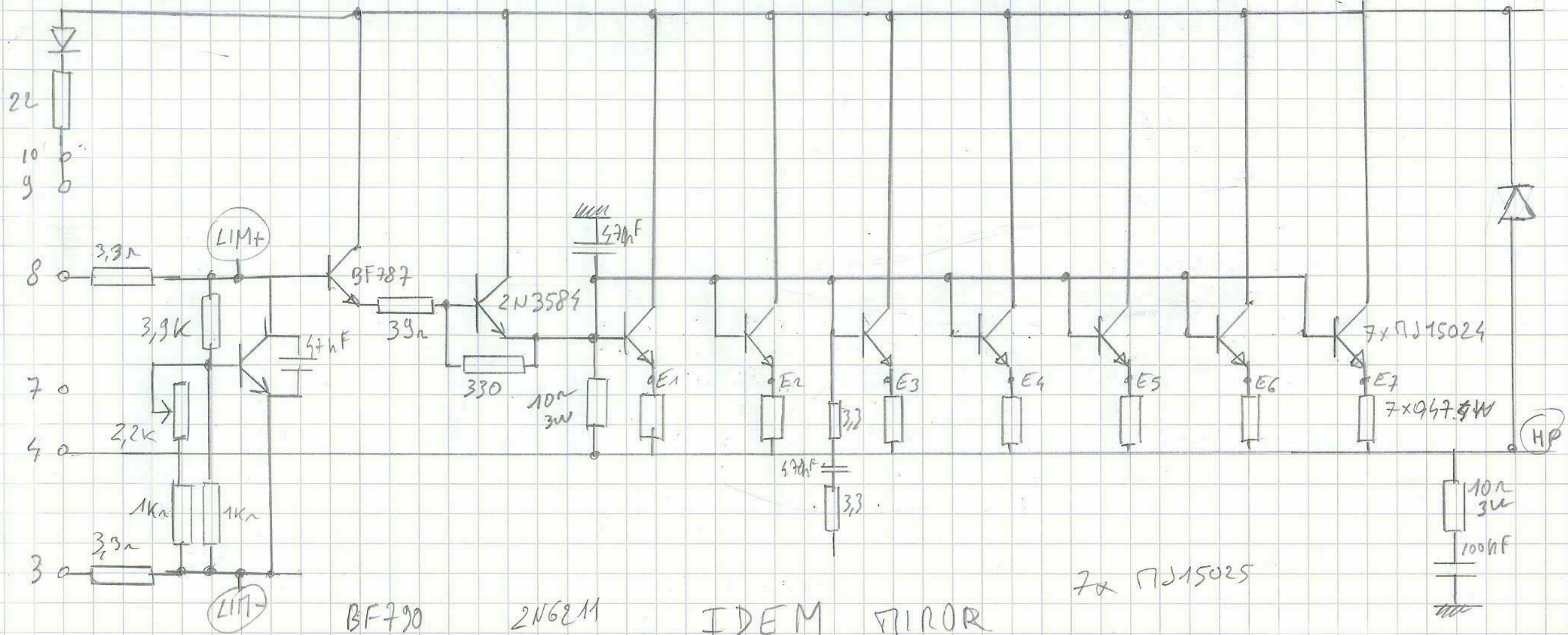
cablage face amiere



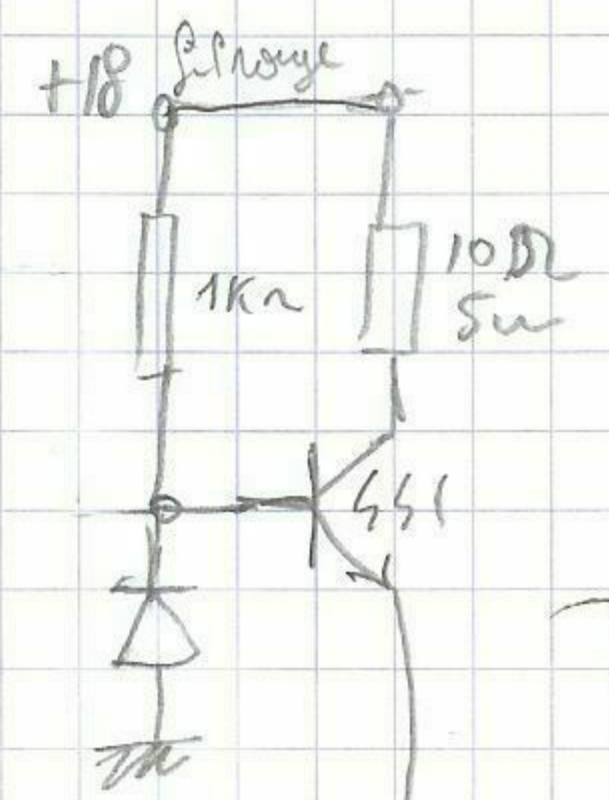
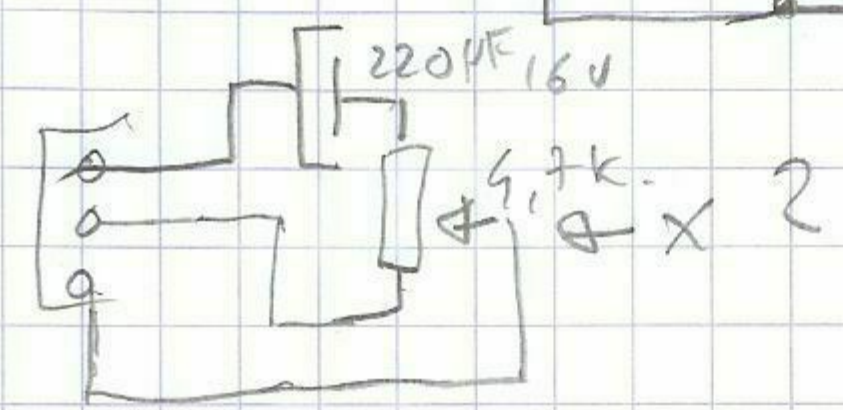
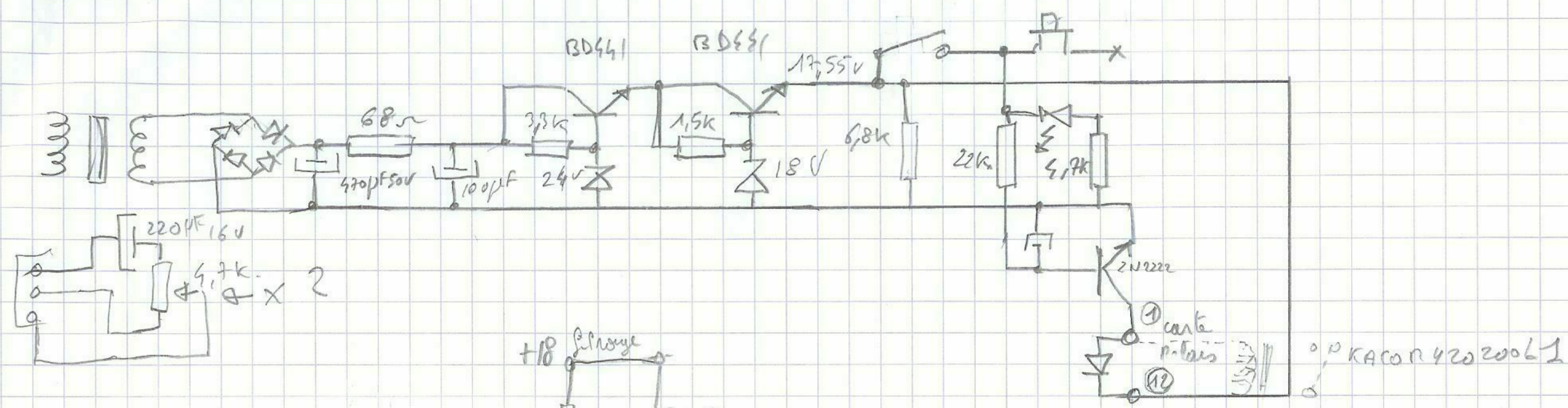
Stereo  $\uparrow$   
Bridge  $\downarrow$



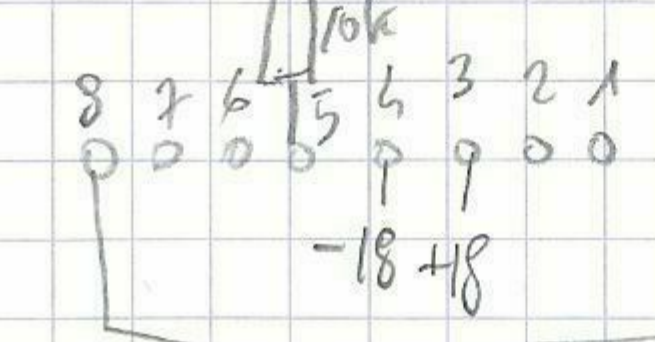
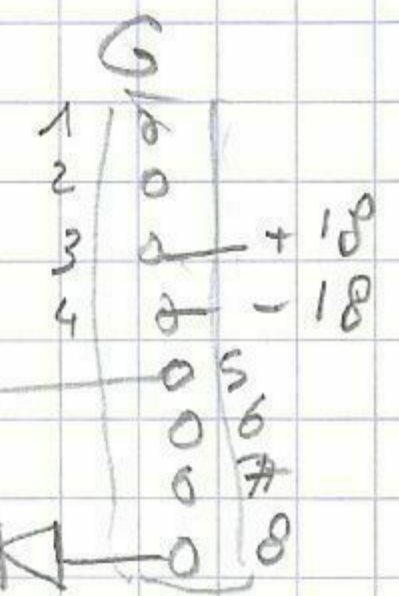
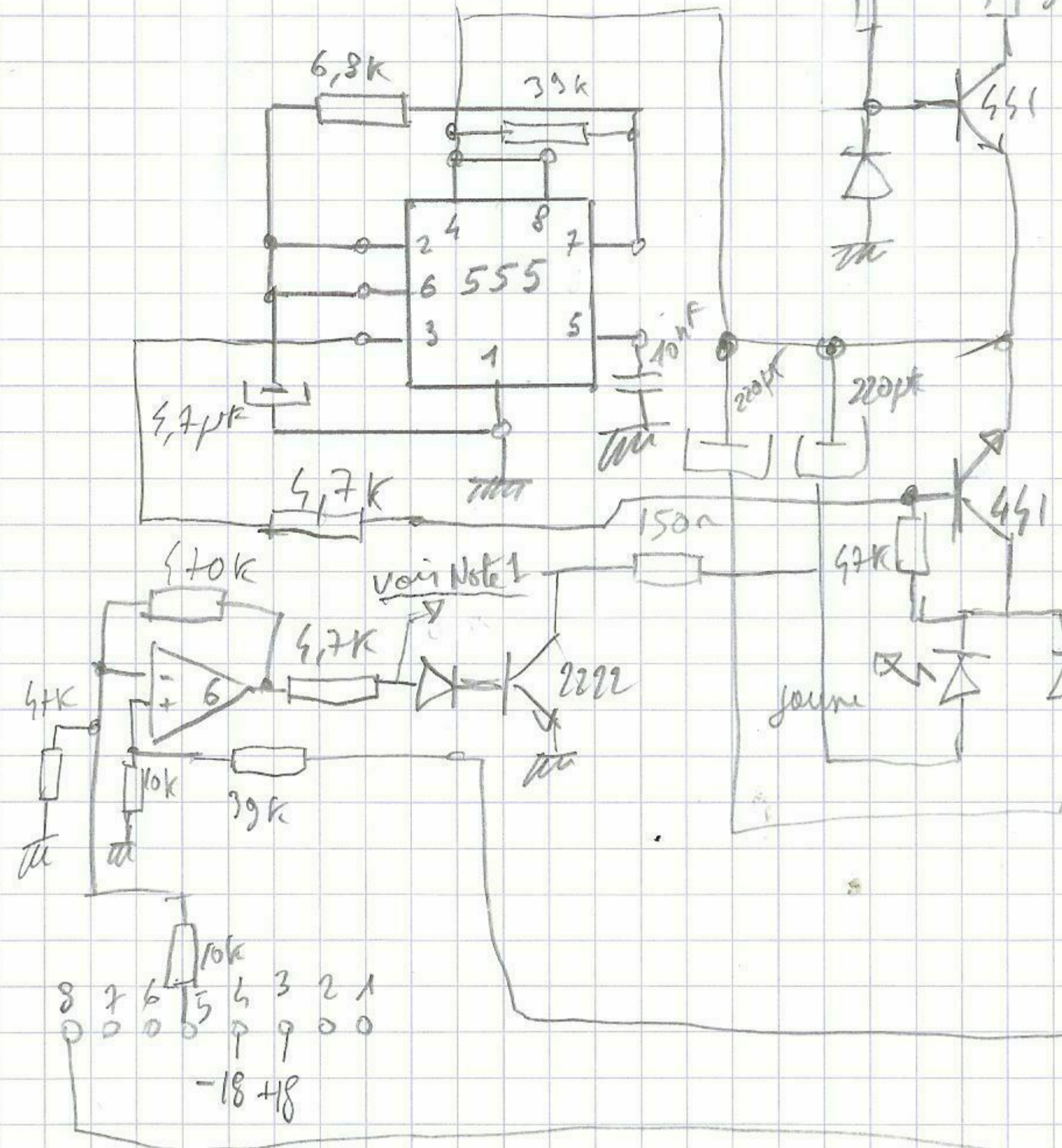
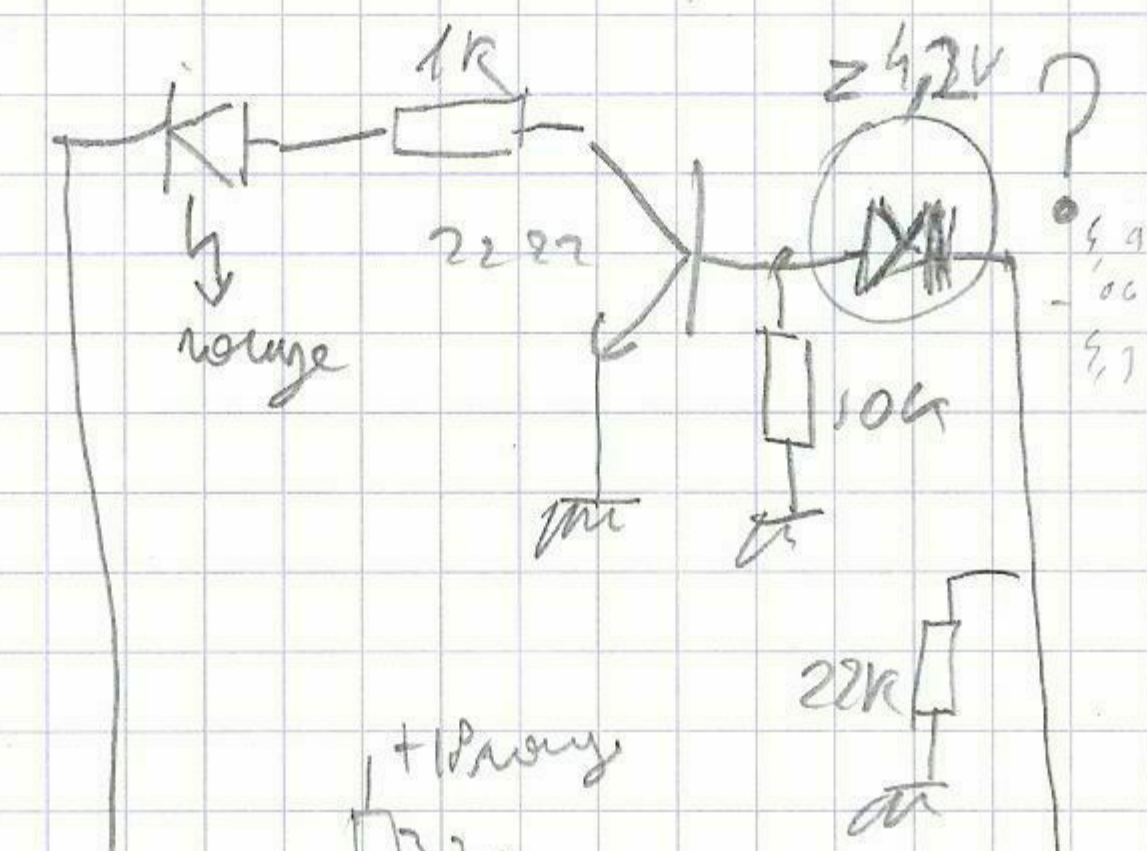








Note 1  
 +15V default  
 led orange ligé  
 -15V OK

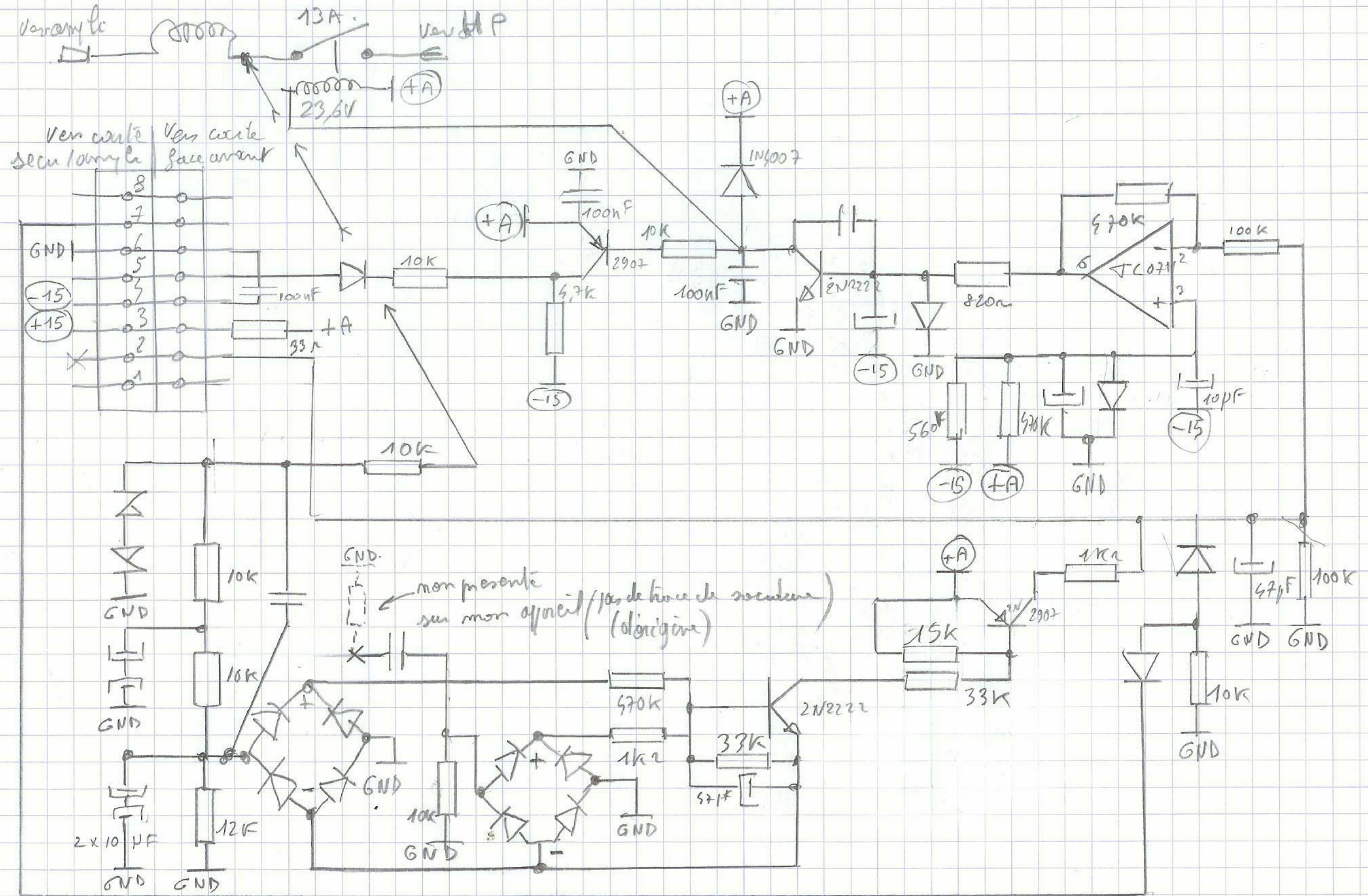




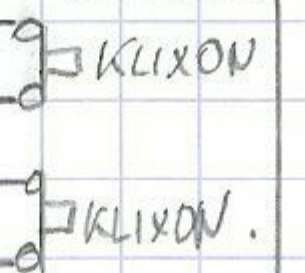
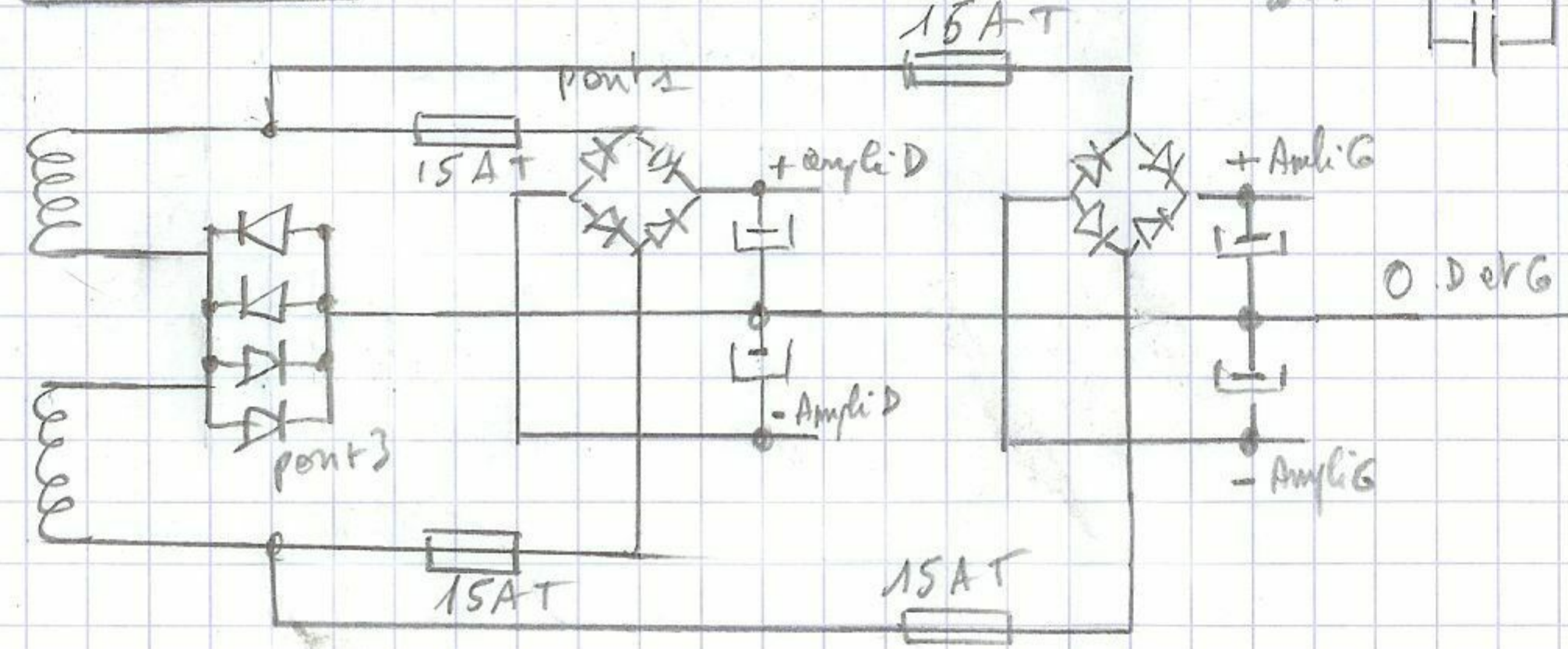
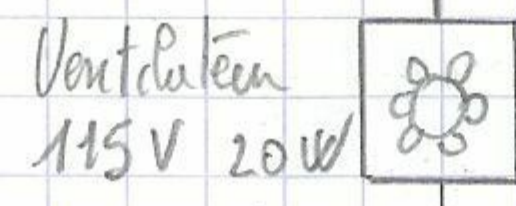
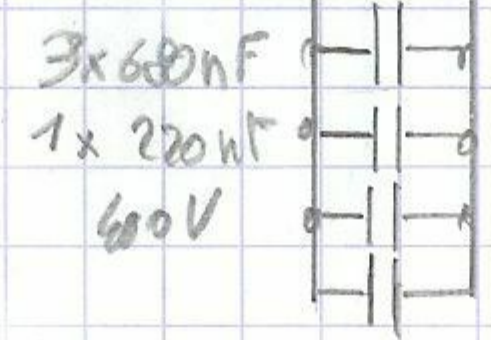
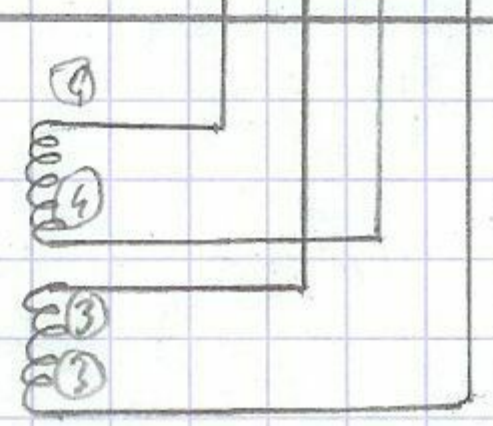
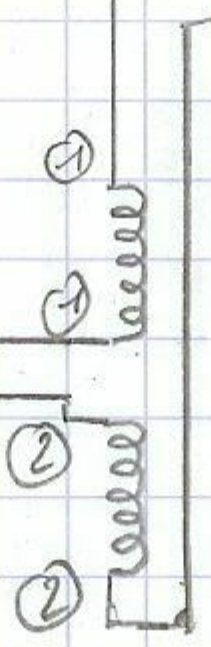
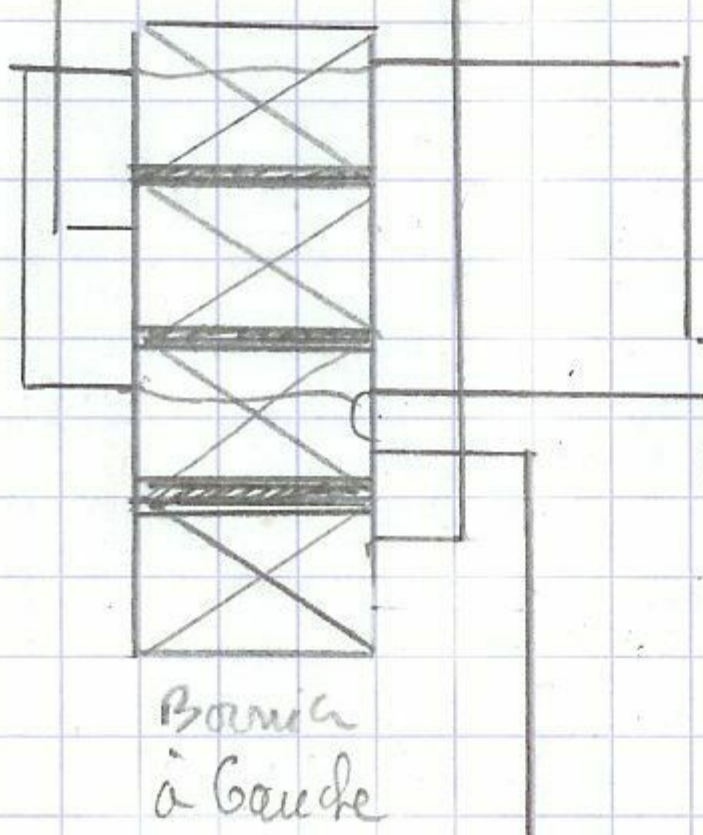
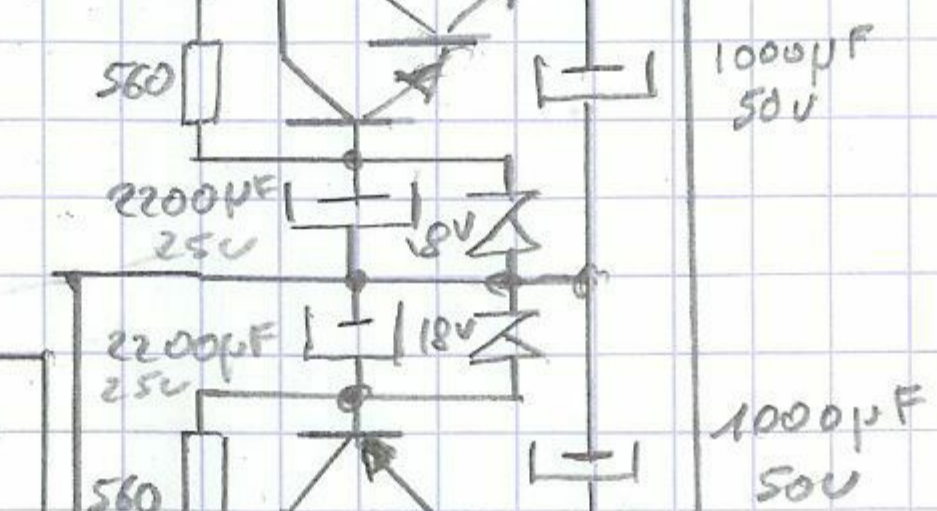
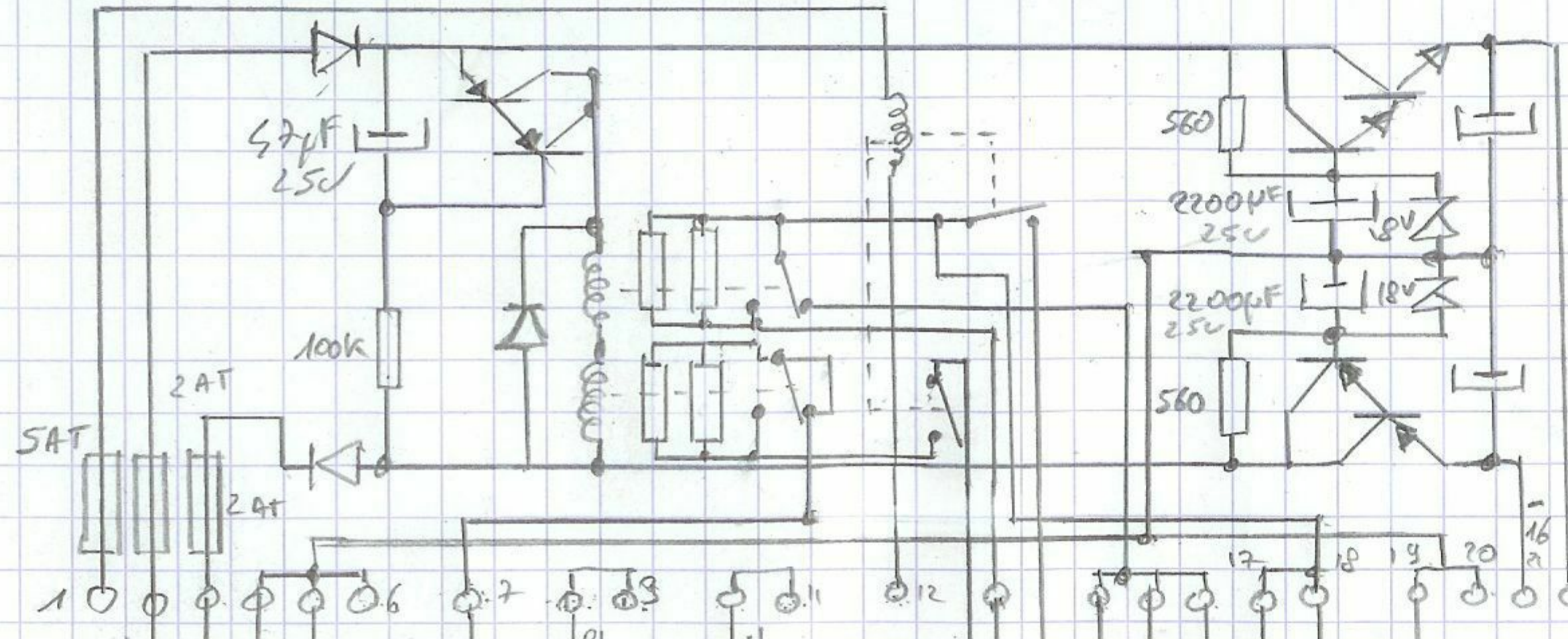
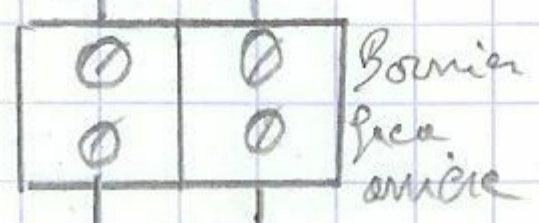
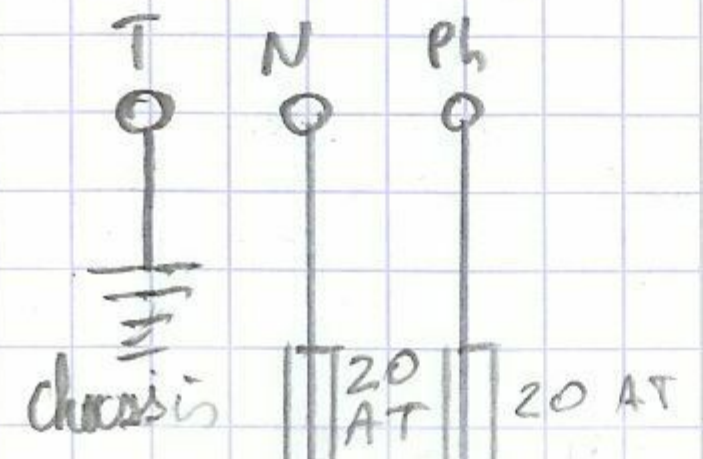
E A A carte relais

PNP 2N2407  
NPN 2N2222

KACO RR23001 L1



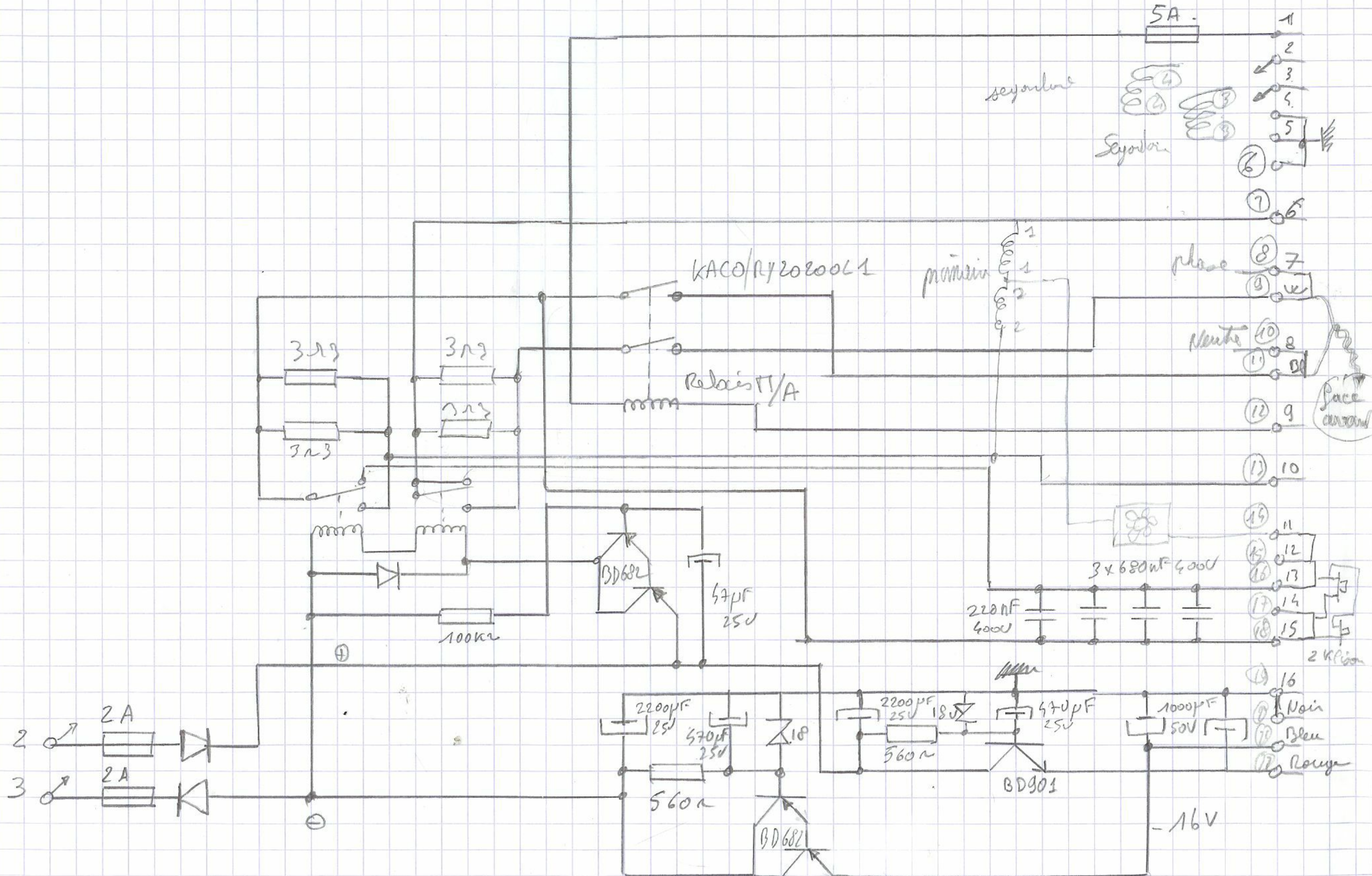




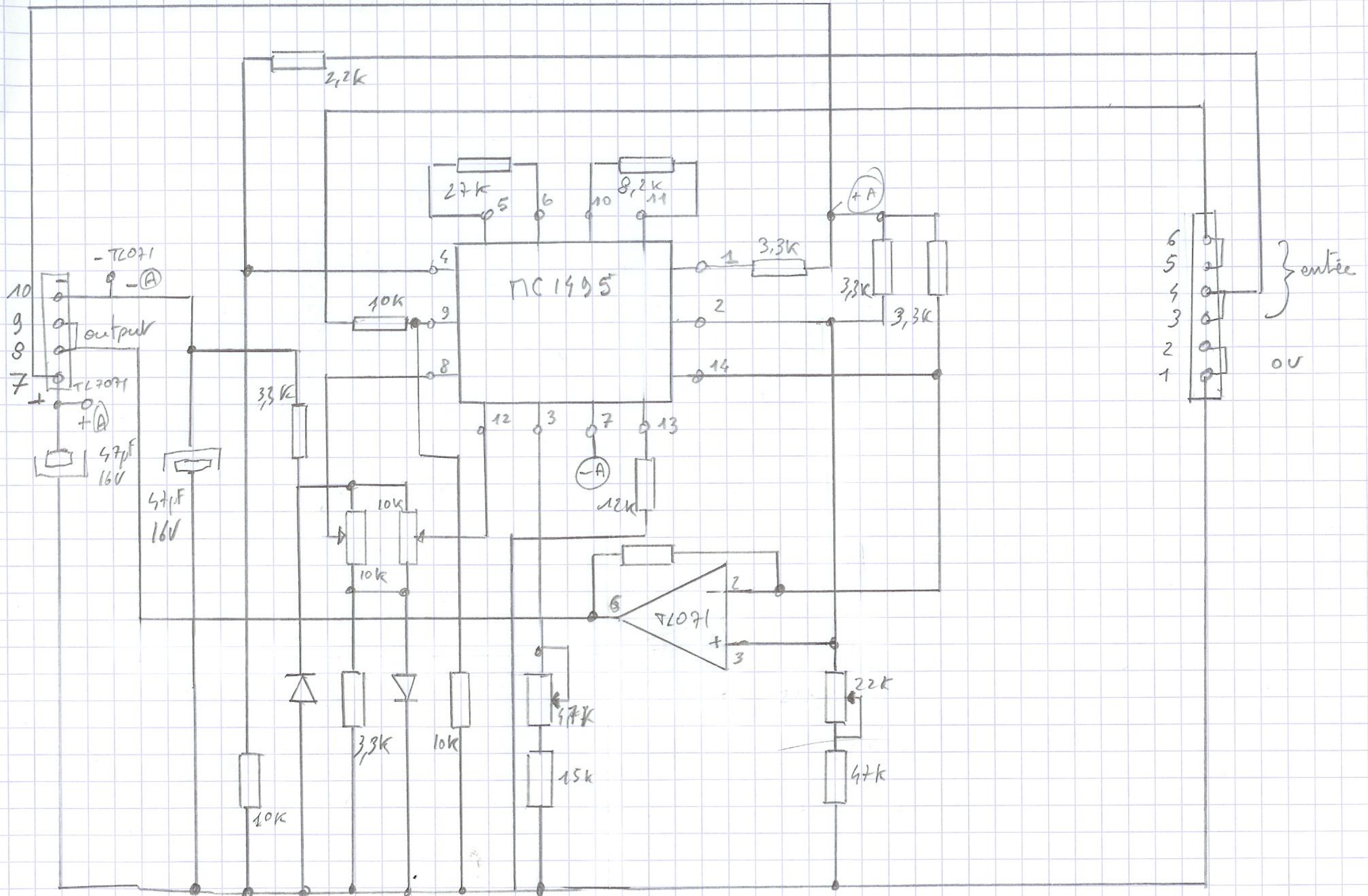


E A A

commutation section.







E A A

multiplicateur & addition