



**SERVICE MANUAL
DOCUMENTATION TECHNIQUE
TECHNISCHE DOKUMENTATION
DOCUMENTAZIONE TECNICA
DOCUMENTACION TECNICA**

THOMSON

**DPL 500
DPL 550 HT**

Version (PC*): A

*PC: The version code is indicated either in the battery compartment or on the back of the unit - ce code version est indiqué dans le compartiment à piles ou au dos de l'appareil - PC: Version des Geräts wird im Batteriefach oder auf der Rückseite angegeben - il codice della versione è indicato nello scompartimento delle batterie o sul retro dell'apparecchio - el código de la versión está indicado en el compartimento de las pilas o en la parte trasera del aparato.



**Technical data - Caractéristiques principales
Technische Daten - Dati tecnici - Características del aparato**

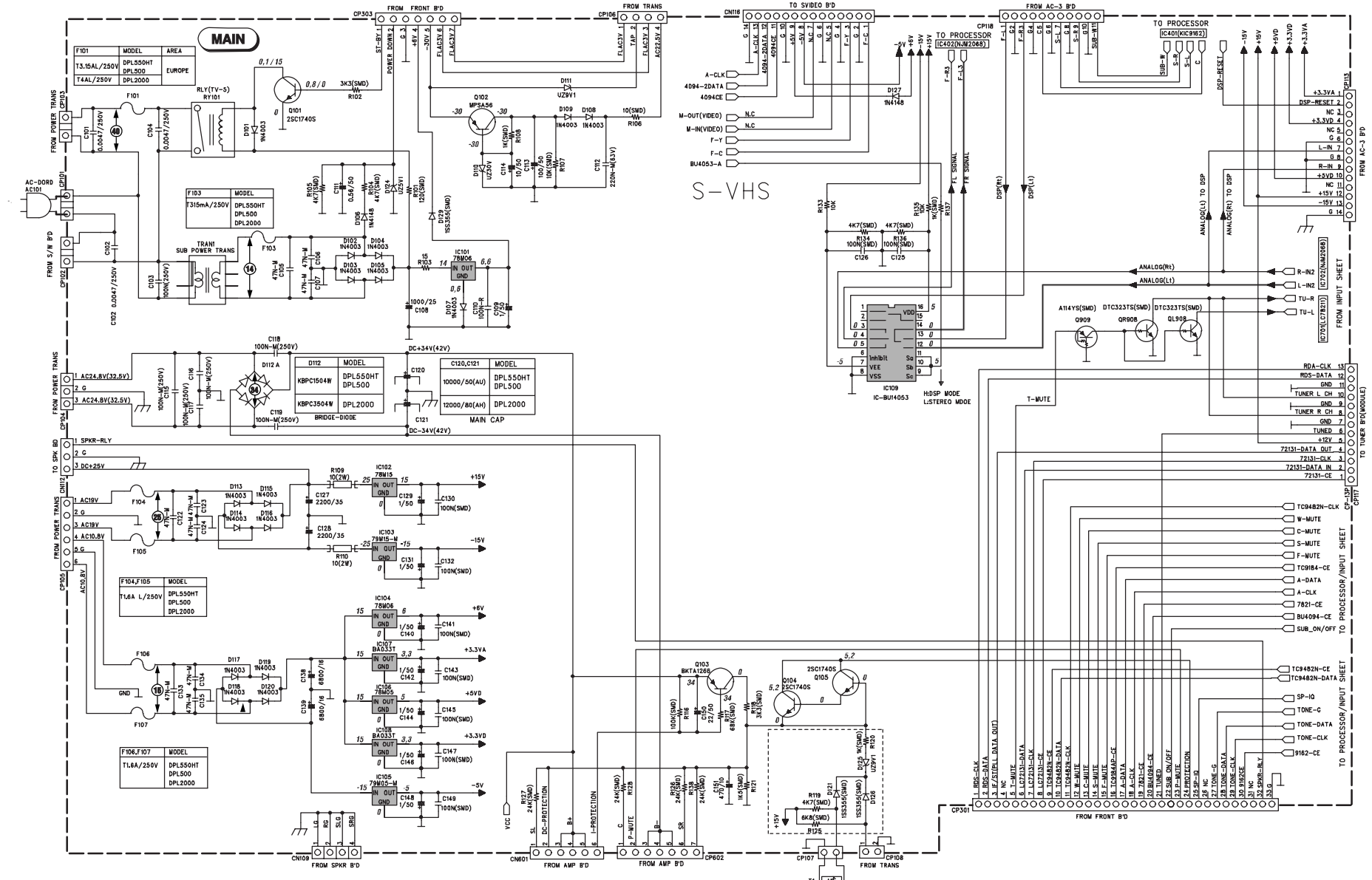
Type of set : Stereo pre-main amplifier Type d'appareil : Préampli-ampli stéréophonique Geräteart : Stereo-Vollverstärker Tipo d'apparecchio : Preamplificatore-amplificatore stereofonico Tipo de aparato : Préamplificador-amplificador estereofónico	
Power supply : Allimentation : Stromversorgung : ~ 230 V - 50Hz Allimentazione : Allimentación :	Nominal output power : Puissance nominale de sortie : Nennausgangsleistung : 5 x 50 W Potenza nominale di uscita : + 1 x 50 W Potencia nominal de salida :
FM - MF : 87,5 - 108 MHz MW - PO : 522 - 1620 kHz LW - GO : 153 - 279 kHz	Sensitivity : Sensibilité : FM - MF : 6 µV (S/N = 26 dB) Empfindlichkeit : MW - PO : 600 µV/m (S/N = 20 dB) Sensibilità : LW - GO : 1500 µV/m (S/N = 20 dB) Sensibilidad :
Frequency response : Courbe de réponse : Front amp 15Hz - 70 kHz Frequenzgang : Rear amp 120Hz - 7kHz Curva di risposta : Sub woofer amp 20Hz - 70kHz Curva de respuesta :	Signal to noise ratio : Rapport signal / bruit : Geräuschspannungsabstand : 65 dB à 1kHz Rapporto segnale / disturbo : Relación señal / ruido :
Total harmonic distortion : Distorsion harmonique : Klirrfaktor : 0,2 % (-6 dB 1kHz) Distorsione armonica : Distorsión armónica :	Stereo separation : Diaphonie : Übersprechdämpfung : 60 dB à 1kHz Diafonia : Diafonía :
Input sensitivity Sensibilité des entrées Eingangsempfindlichkeit 200mV Sensibilità del ingresso Sensibilidad de las entradas	



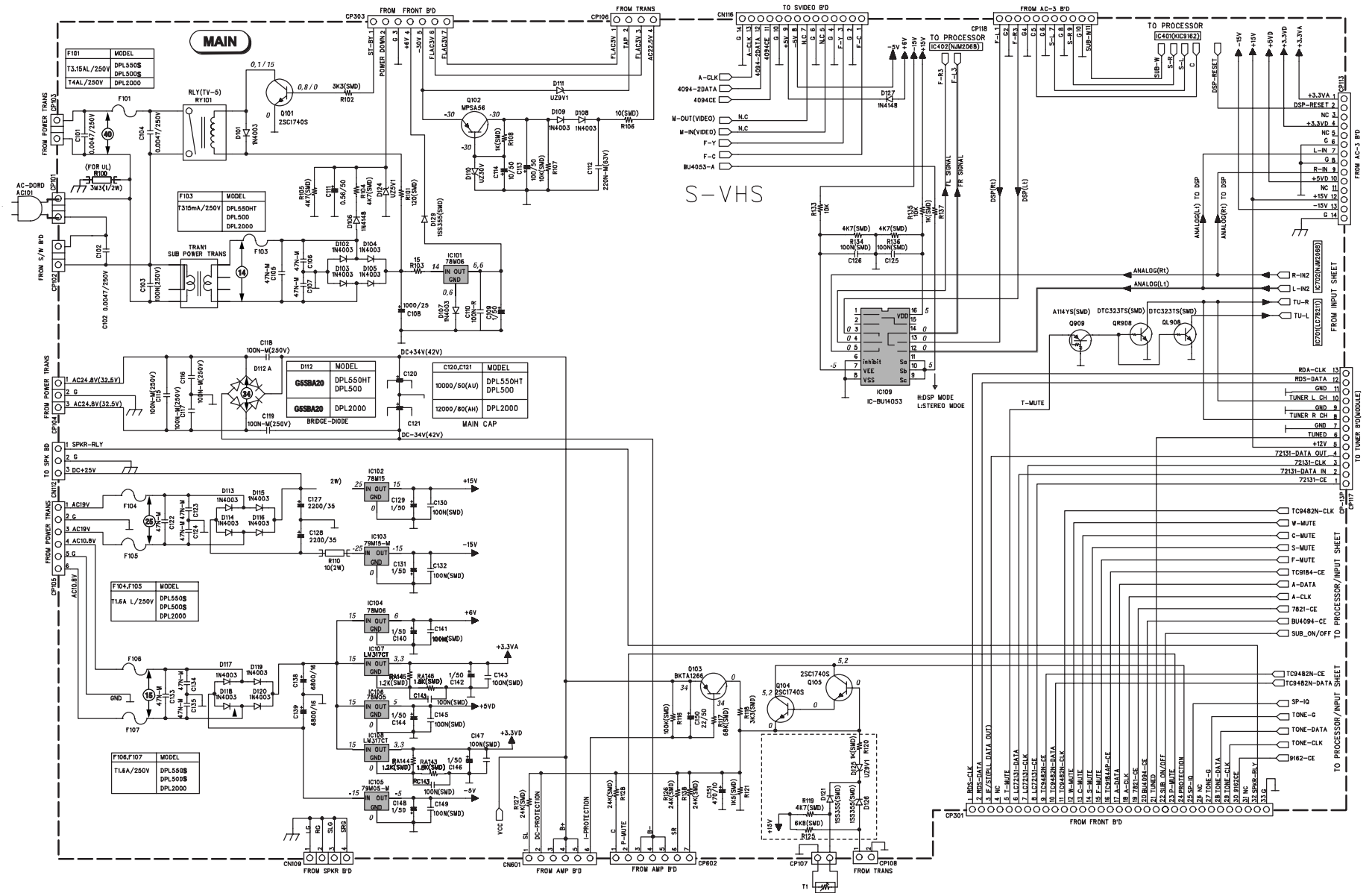
WARNING : Before servicing this chassis read the safety recommendations.
ATTENTION : Avant toute intervention sur ce châssis, lire les recommandations de sécurité.
ACHTUNG : Vor jedem Eingriff auf diesem Chassis, die Sicherheitsvorschriften lesen.
ATTENZIONE : Prima di intervenire sullo chassis, leggere le norme di sicurezza.
IMPORTANTE : Antes de cualquier intervención, leer las recomendaciones de seguridad.

Code : 351 293 20 - 0800 / 2,7M - Print. - PAV 5005R/5005

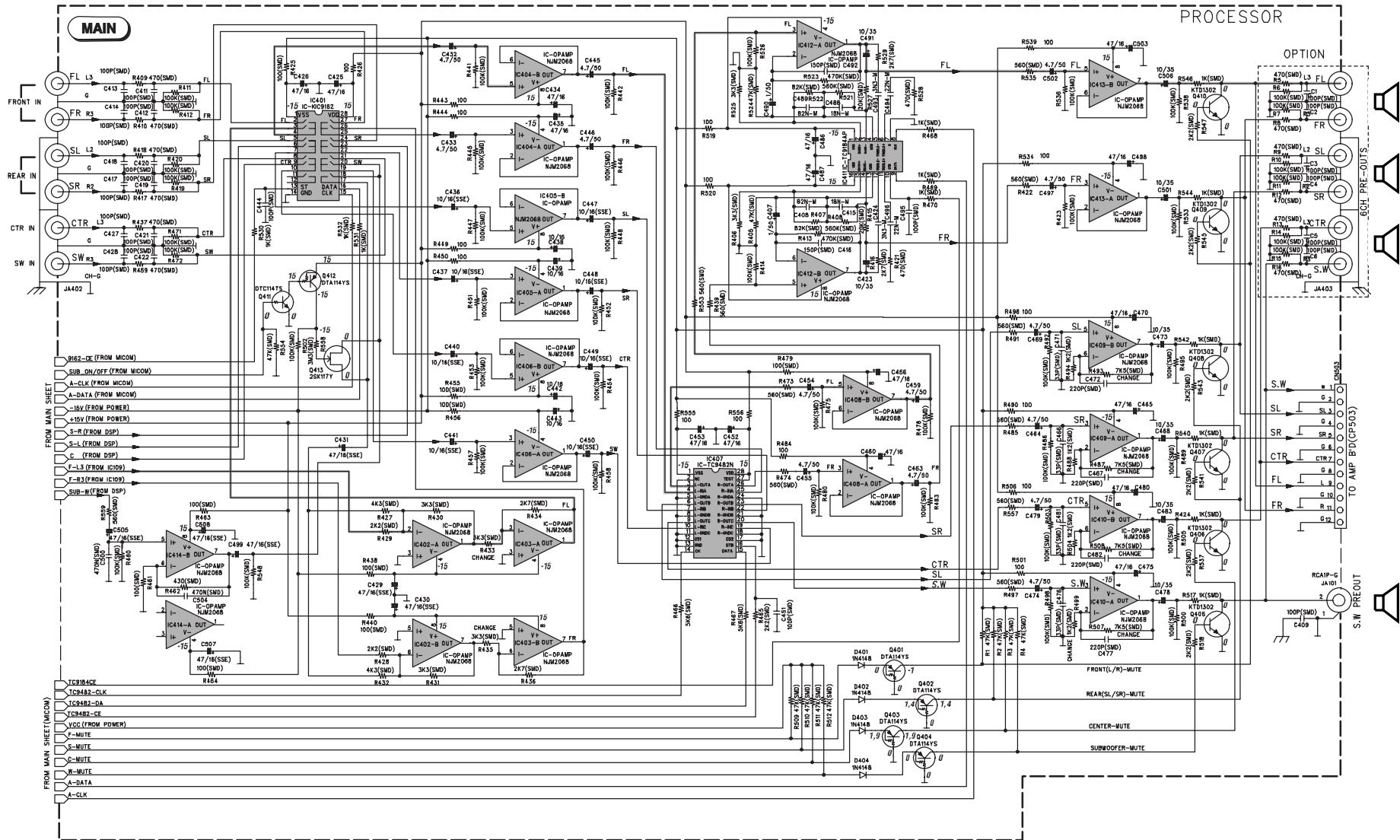
MAIN SCHEMATIC DIAGRAM - SCHEMA DE LA PLATINE PRINCIPALE - GRUNDPLATTE SCHALTBILD - SCHEMA DELLA PIASTRA PRINCIPALE- ESQUEMA DE LA PLATINA PRINCIPAL (POWER SUPPLY PART)



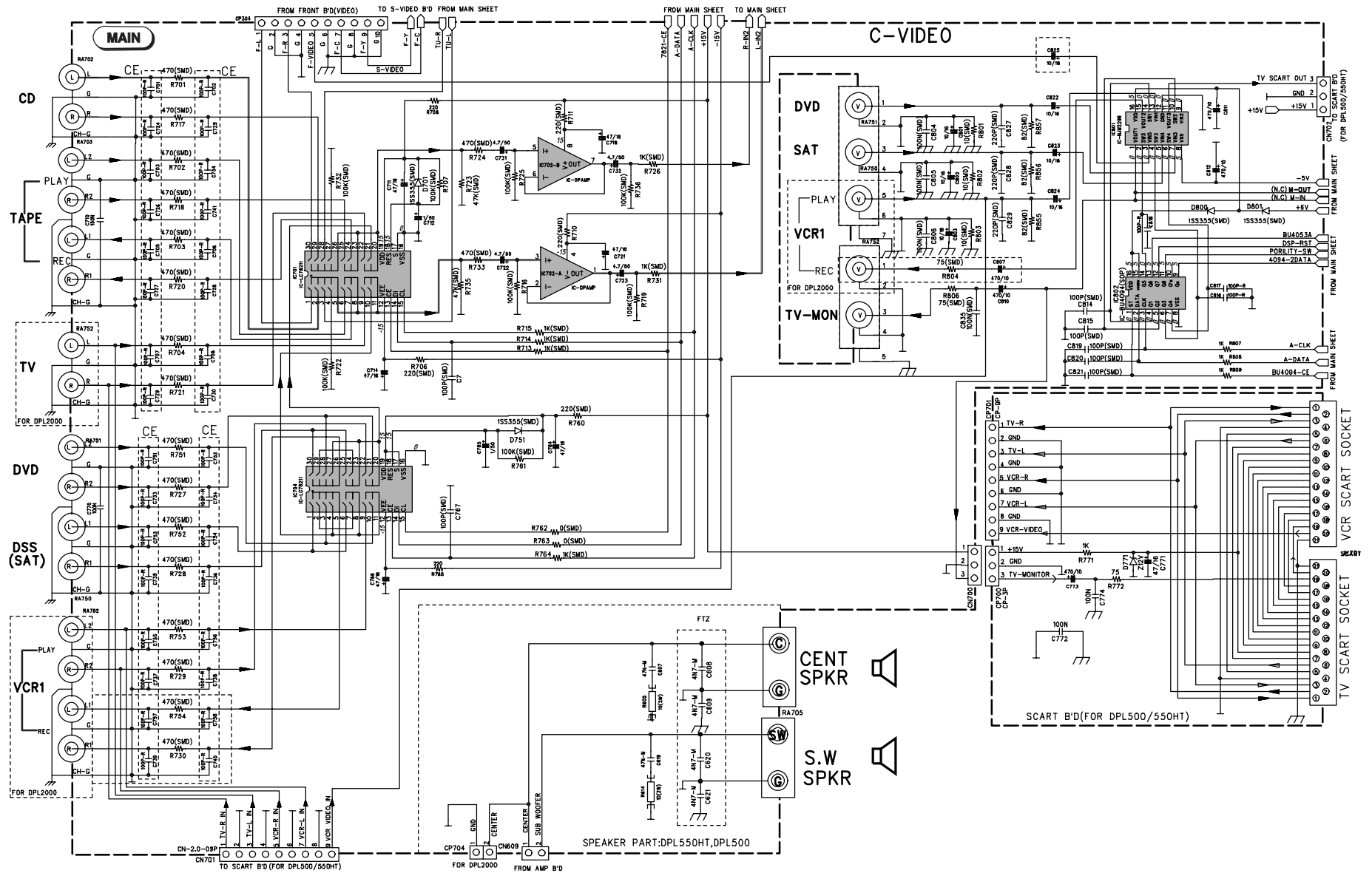
MAIN SCHEMATIC DIAGRAM - SCHEMA DE LA PLATINE PRINCIPALE - GRUNDPLATTE SCHALTBIKD - SCHEMA DELLA PIASTRA PRINCIPALE- ESQUEMA DE LA PLATINA PRINCIPAL (POWER SUPPLY PART)



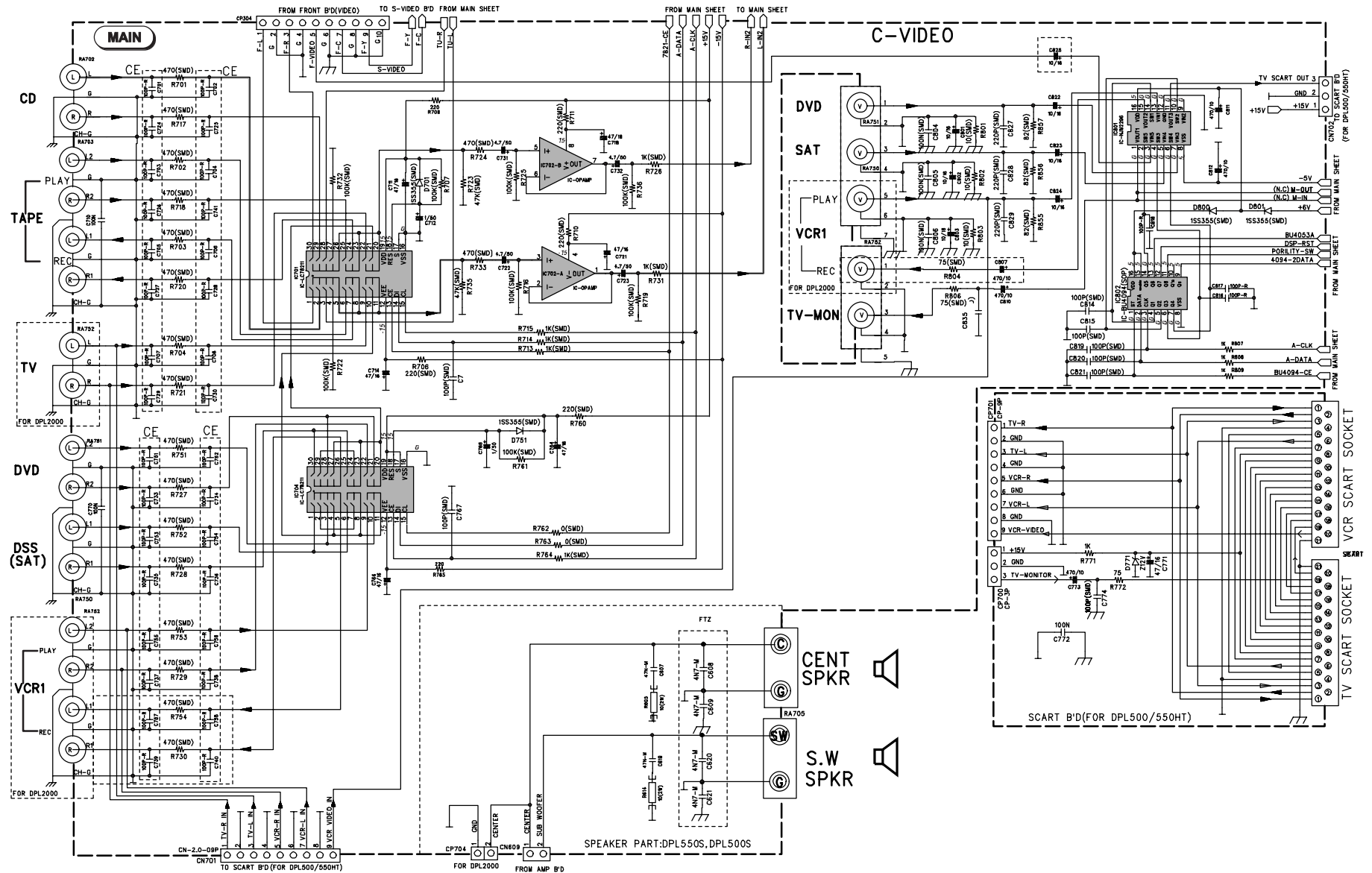
MAIN SCHEMATIC DIAGRAM - SCHEMA DE LA PLATINE PRINCIPALE - GRUNDPLATTE SCHALTBILD - SCHEMA DELLA PIASTRA PRINCIPALE- ESQUEMA DE LA PLATINA PRINCIPAL (PRE-AMPLIFIER PART)



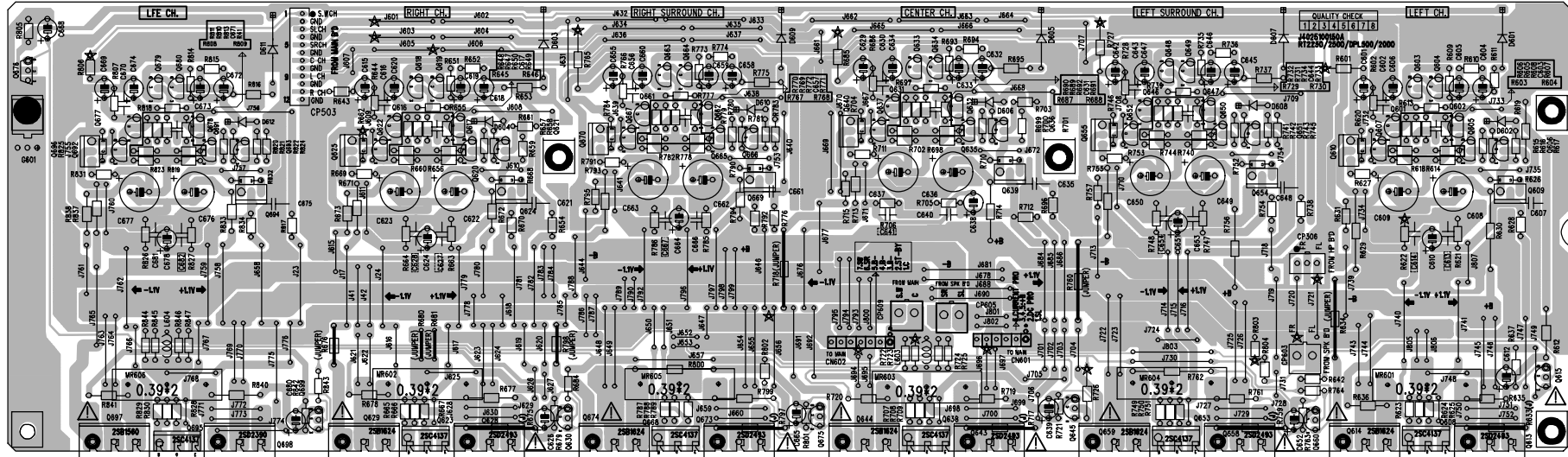
MAIN SCHEMATIC DIAGRAM - SCHEMA DE LA PLATINE PRINCIPALE - GRUNDPLATTE SCHALTBILD - SCHEMA DELLA PIASTRA PRINCIPALE- ESQUEMA DE LA PLATINA PRINCIPAL (INPUT/OUTPUT PART)



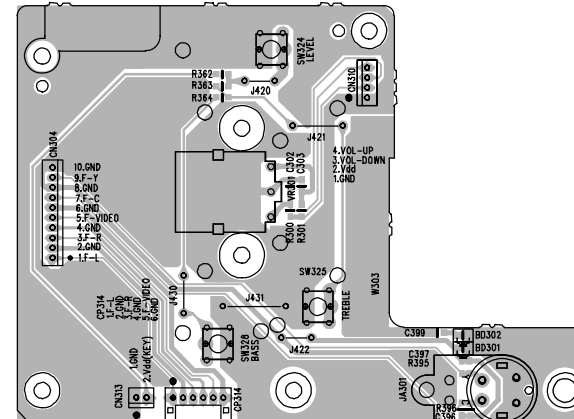
MAIN SCHEMATIC DIAGRAM - SCHEMA DE LA PLATINE PRINCIPALE - GRUNDPLATTE SCHALTBILD - SCHEMA DELLA PIASTRA PRINCIPALE- ESQUEMA DE LA PLATINA PRINCIPAL (INPUT/OUTPUT PART)



Amplifier P.C.B.
Platine amplificateur
Ltpl. Endverstärker
Plastra amplificatore
Platina amplificador



Volume P.C.B.
Platine volume
Ltpl. Lautstärke
Plastra volume
Platina volumen



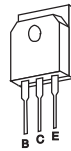
KTA1268
 KTA1266
 KTC3200



KTC3206
 KTA1024
 C114YS

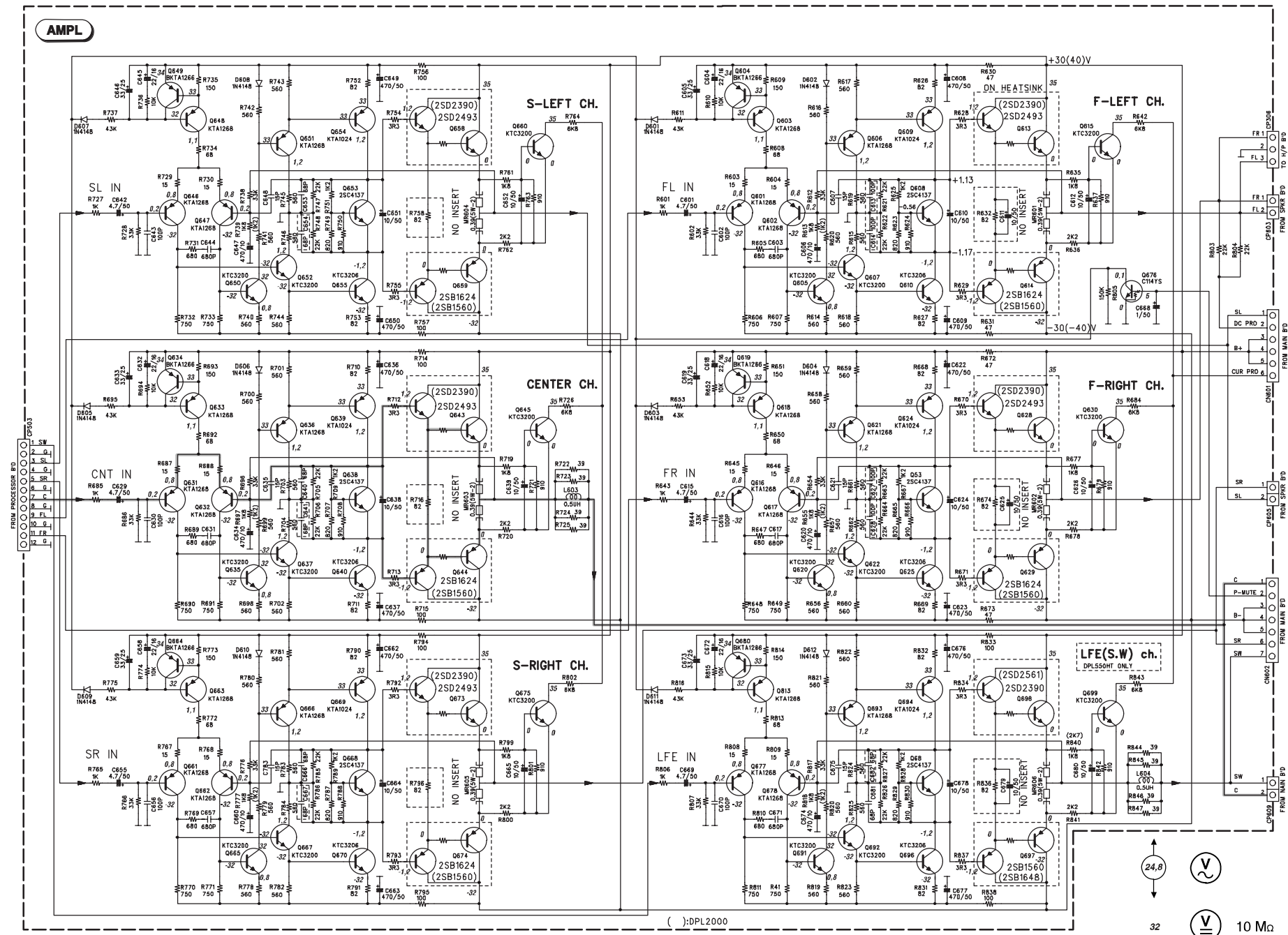


2SC4137



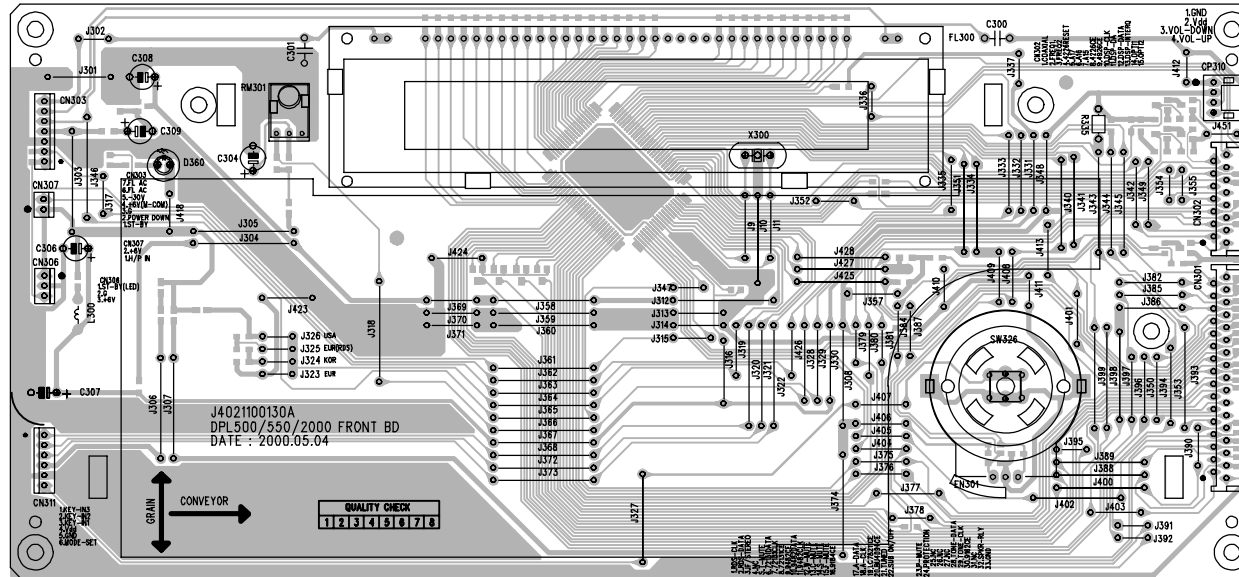
2SD2493
 2SB1624

AMPLIFIER SCHEMATIC DIAGRAM - SCHEMA DE L'AMPLIFICATEUR - SCHALTBILD ENDVERSTÄRKER - SCHEMA DEL AMPLIFICATORE - ESQUEMA DEL AMPLIFICADOR

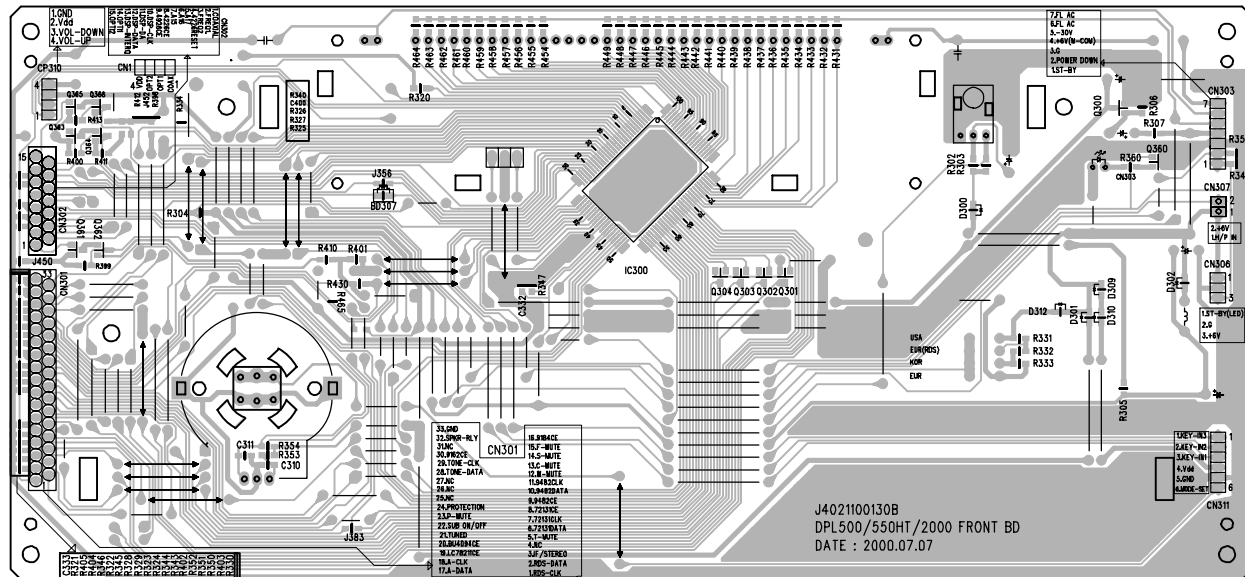


Controls / display P.C.B.
Platine commandes / afficheurs
Ltpl. Bedientell / Anzeige
Piastra comandi / Indicatori
Platina de mandos / indicadores

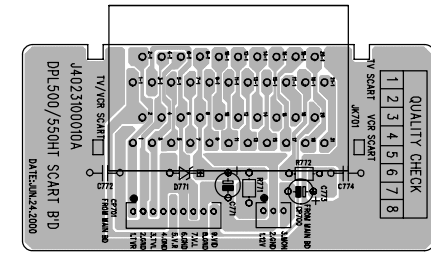
Component side
 Côté composants
 Bestückungsseite
 Lato componenti
 Lado componentes



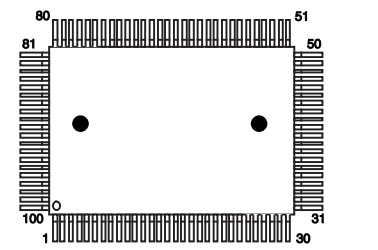
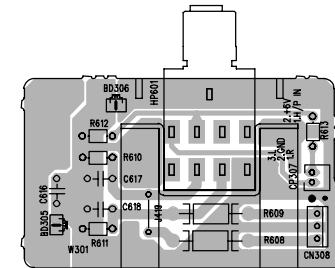
Solder side
 Côté soudure
 Lötseite
 Lato saldature
 Lado del cobre



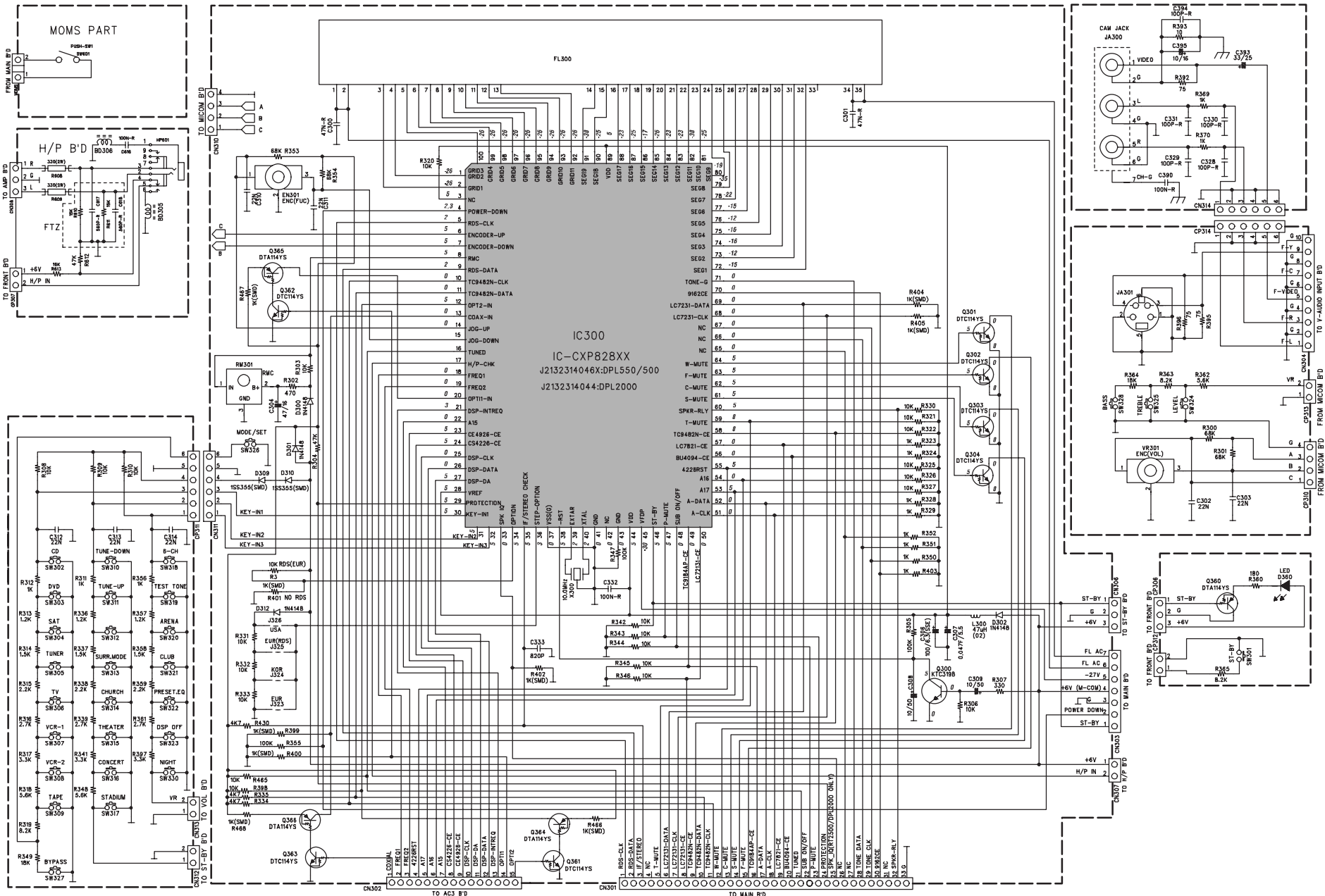
Scart interface P.C.B.
Platine interface péritélévision
Ltpl. Europa Normbuchse
Piastra presa peritel
Platina eurotoma



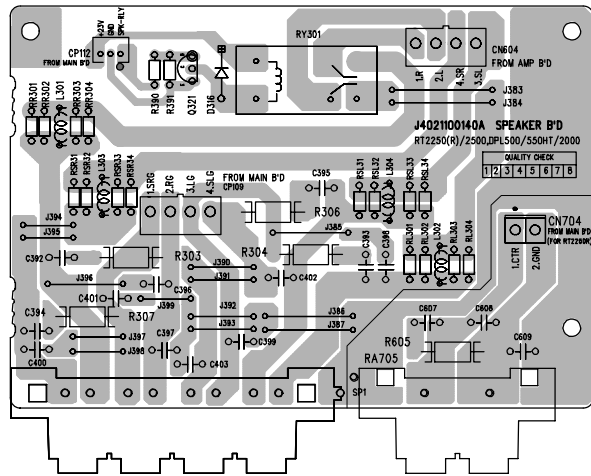
Headphone-jack P.C.B.
Platine prise-casque
Ltpl. Kopfhörerbuchse
Piastra presa per cuffia
Platina toma auriculares



CONTROL / DISPLAY SCHEMATIC DIAGRAM - SCHEMA COMMANDES / AFFICHEUR - BEDIENTEIL / ANZEIGE SCHALTBILD - SCHEMA COMANDI / INDICATORE - ESQUEMA MANDOS / INDICADOR

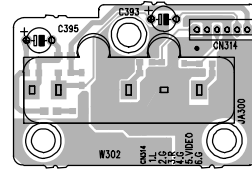


Speaker P.C.B.
Platine haut-parleurs
Lautsprecher P.C.B.
Plastra altoparlanti
Platina altavoces

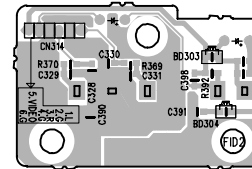


Video Input/output P.C.B.
Platine des entrées/sorties vidéo
Ltpl. video eingängen/ausgang
Plastra ingressi/uscità video
Platina entradas/salida vídeo (DINS)

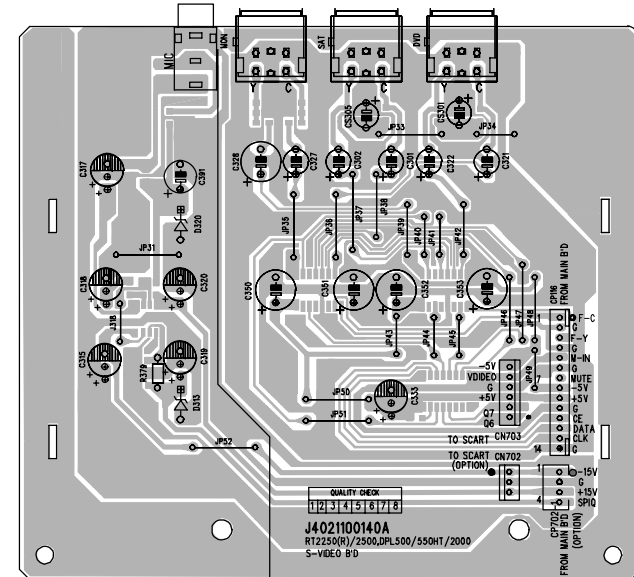
Component side
 Côté composants
 Bestückungsseite
 Lato componenti
 Lado componentes



Solder side
 Côté soudure
 Lötseite
 Lato saldatura
 Lado del cobre

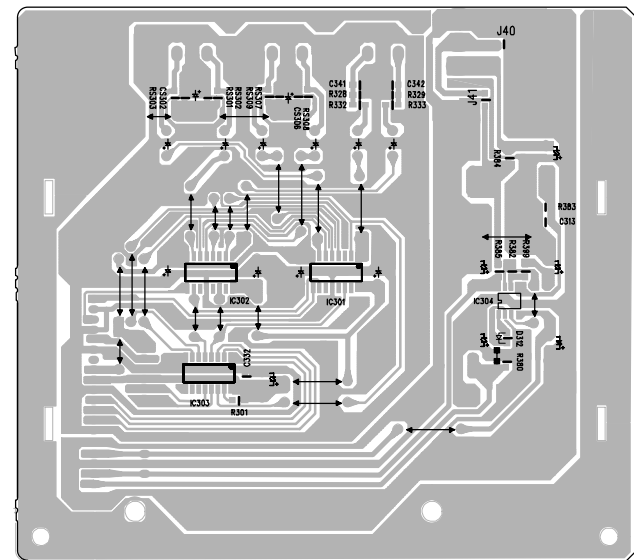
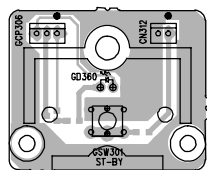
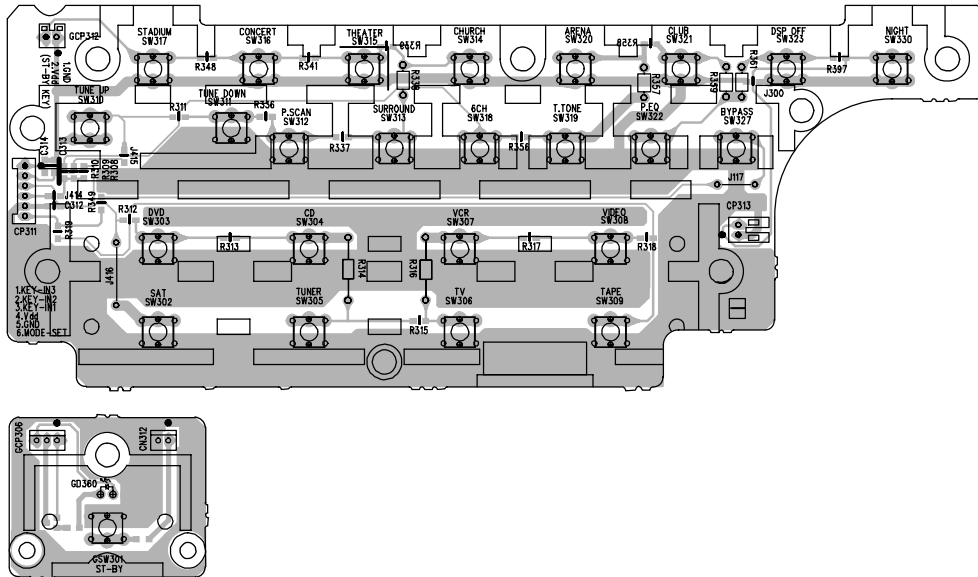


Component side
 Côté composants
 Bestückungsseite
 Lato componenti
 Lado componentes

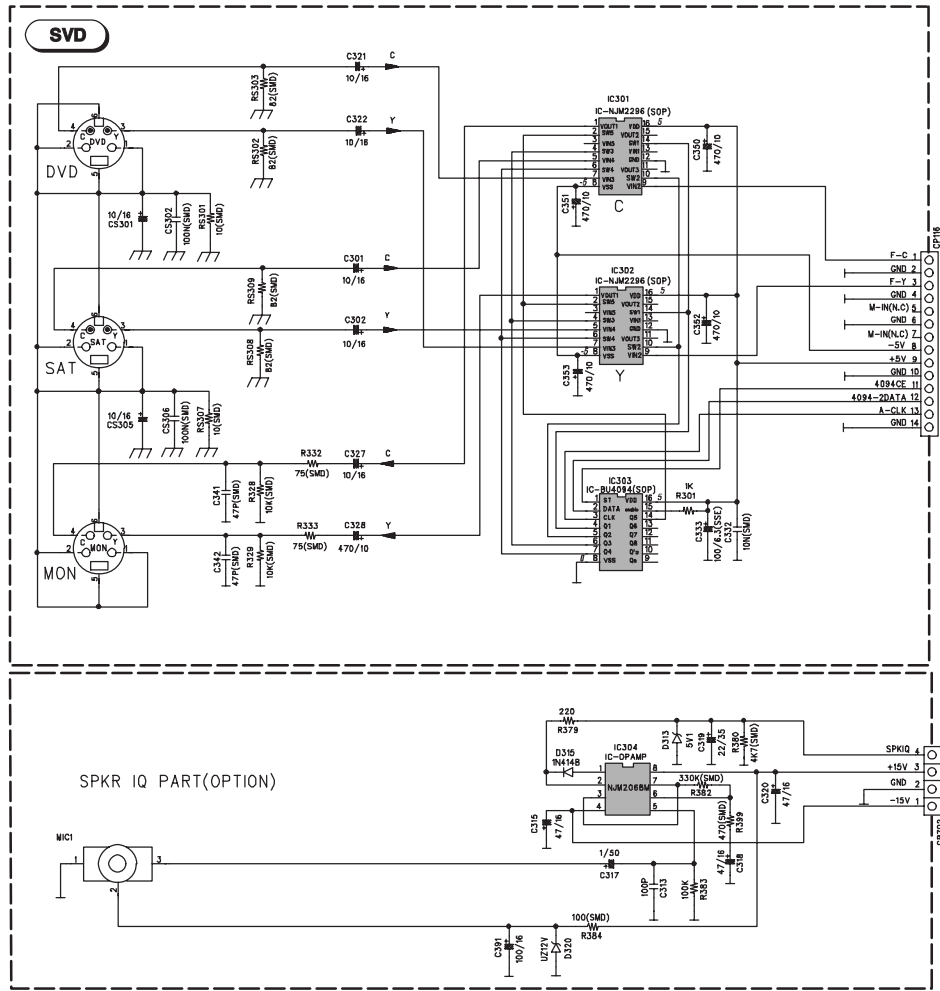


Solder side
 Côté soudure
 Lötseite
 Lato saldatura
 Lado del cobre

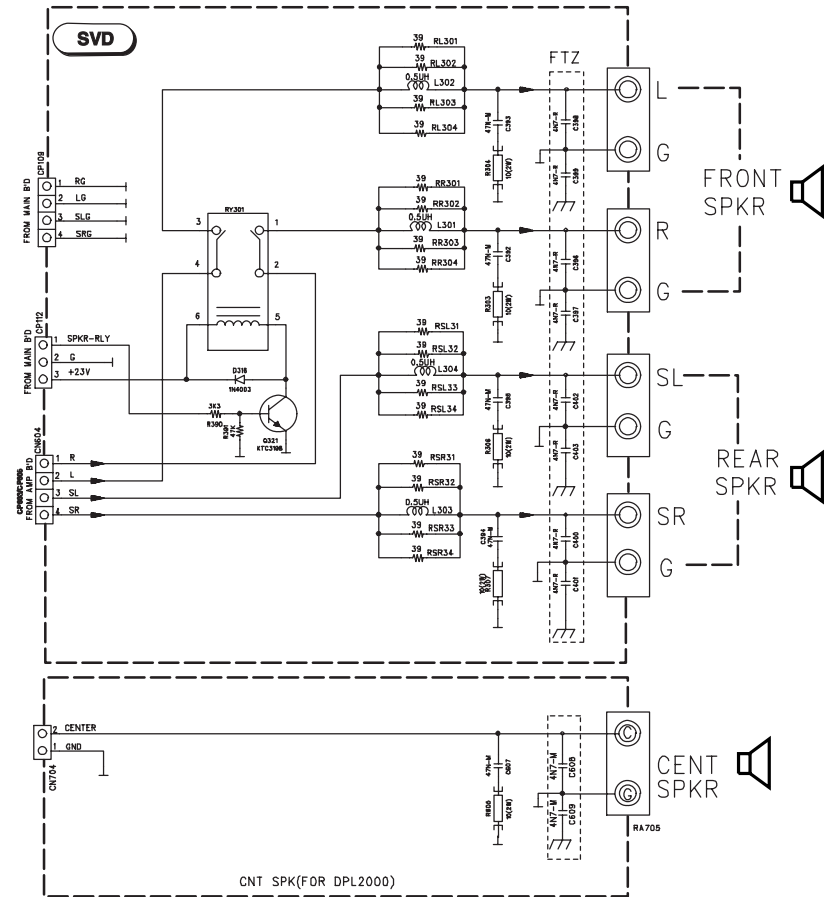
Controls P.C.B.
Platine commandes
Ltpl. Bedientell
Plastra comandi
Platina de mandos



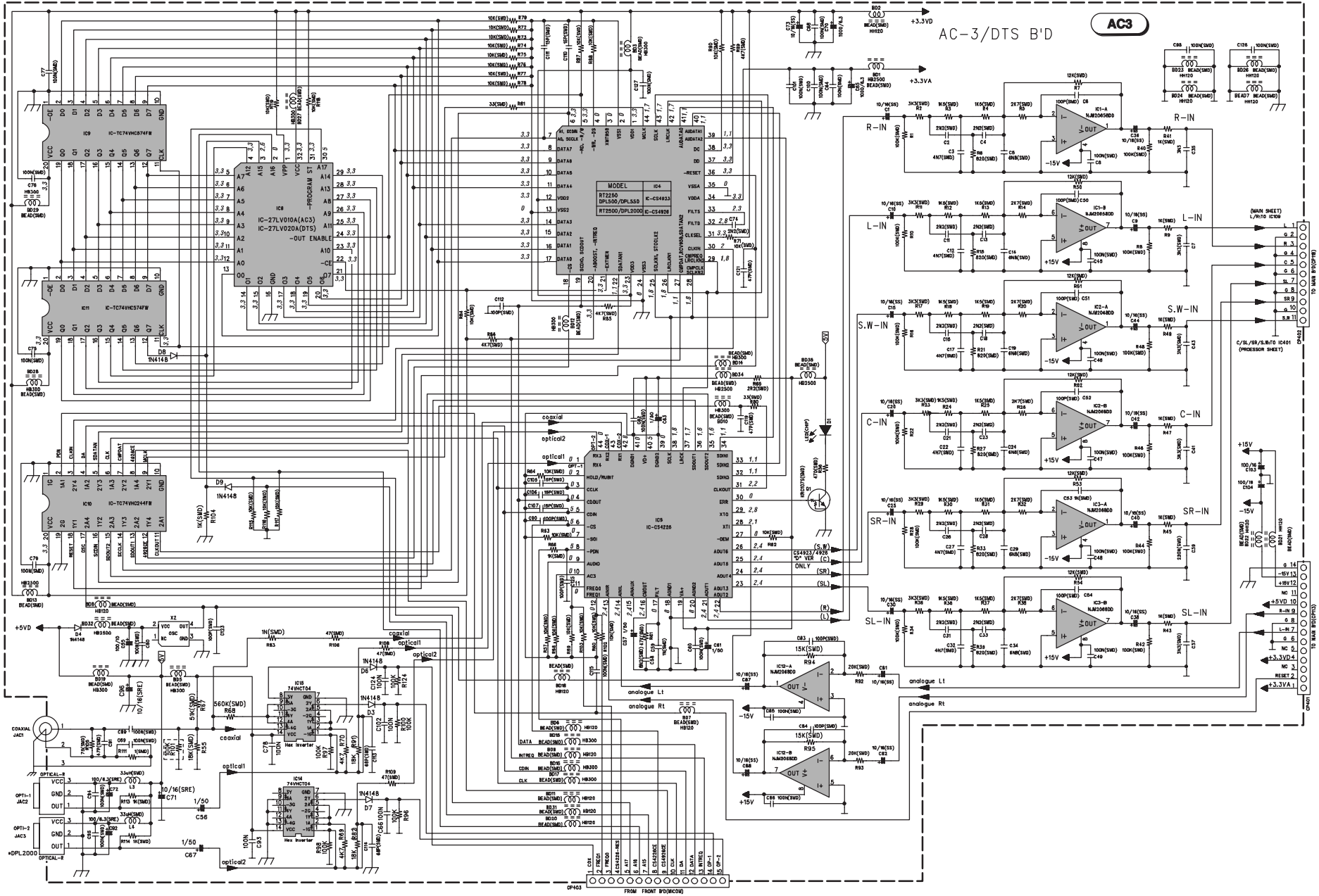
VIDEO INPUT/OUTPUT SCHEMATIC DIAGRAM - SCHEMA DES ENTREES/SORTIES VIDEO - SCHALTBILD VIDEO EINGÄNGEN/AUSGANG - SCHEMA INGRESSI/USCITA VIDEO - ESQUEMA ENTRADAS/SALIDAD VIDEO



SPEAKER OUTPUT SCHEMATIC DIAGRAM - SCHEMA DES SORTIES HAUT-PARLEURS - SCHALTBILD LAUTSPRECHER AUSGANGEN - SCHEMA USCITE ALTOPARLANTI - ESQUEMA SALIDAS ALTAVOCES

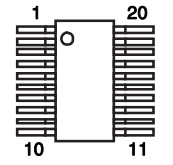
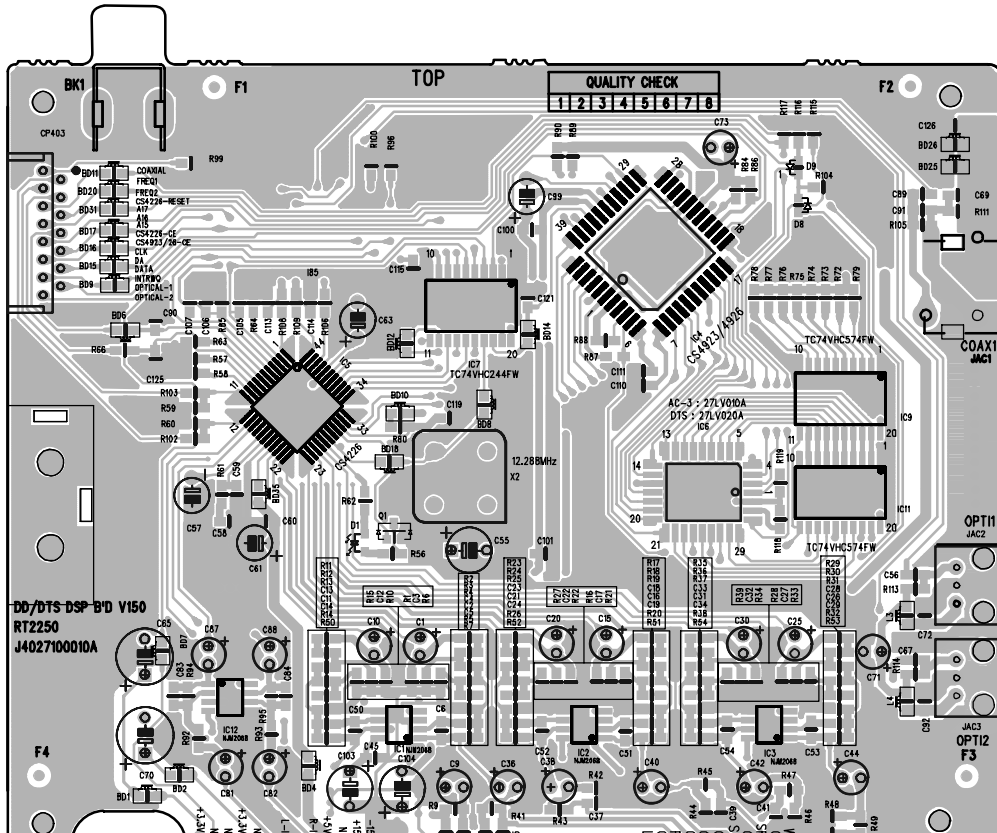


DIGITAL PROCESSING SCHEMATIC DIAGRAM - SCHEMA DU TRAITEMENT DIGITAL - SCHALTBILD DIGITALVERARBEITUNG - SCHEMA ELABORAZIONE DIGITALE - ESQUEMA DEL TRATAMIENTO DIGITAL

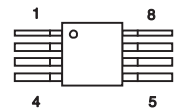


Digital processing P.C.B.
Platine traitement digital
Ltpl. Digitalverarbeitung
Piastra elaborazione digitale
Platina tratamiento digital

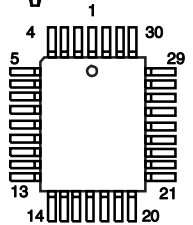
Component side
 Côté composants
 Bestückungsseite
 Lato componenti
 Lado componentes



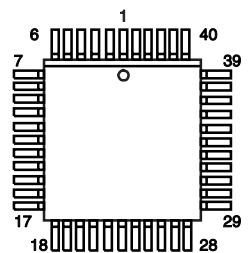
TC74VHC574FW
 TC74VHC244FW



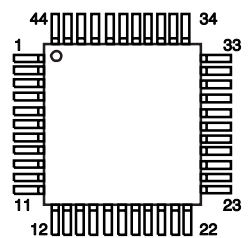
NJM2068DD
 NJM20658DD



27LV010A
 27LV020A

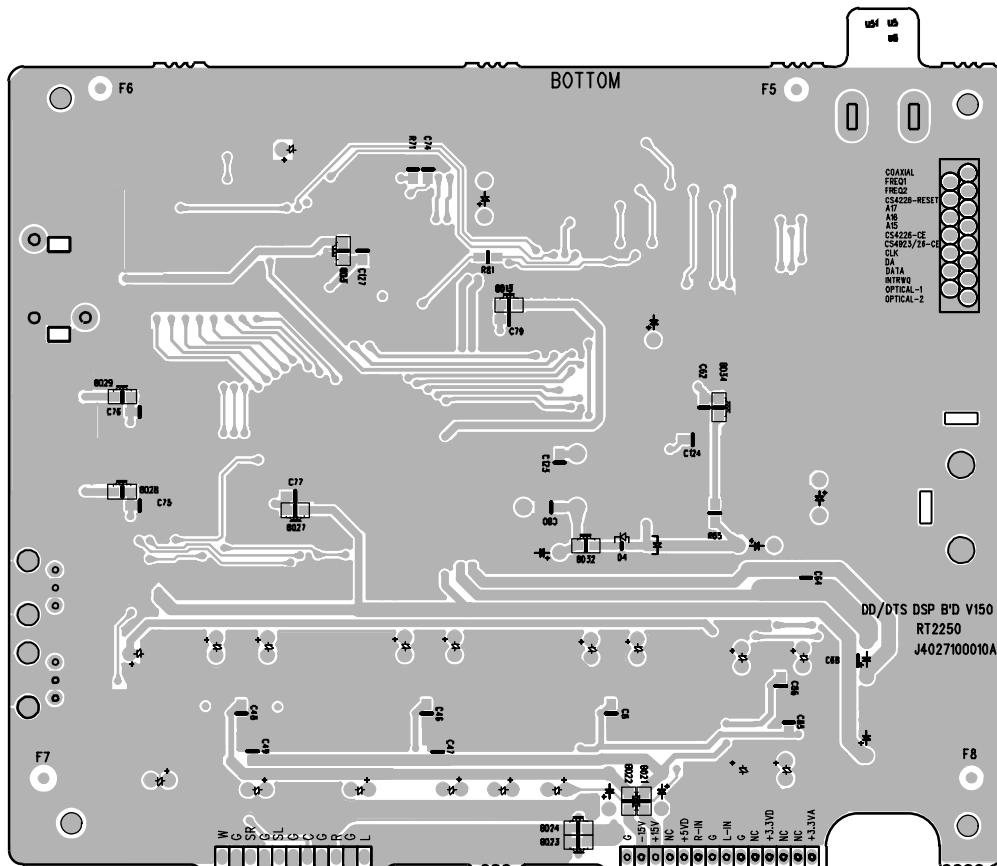


CS4923

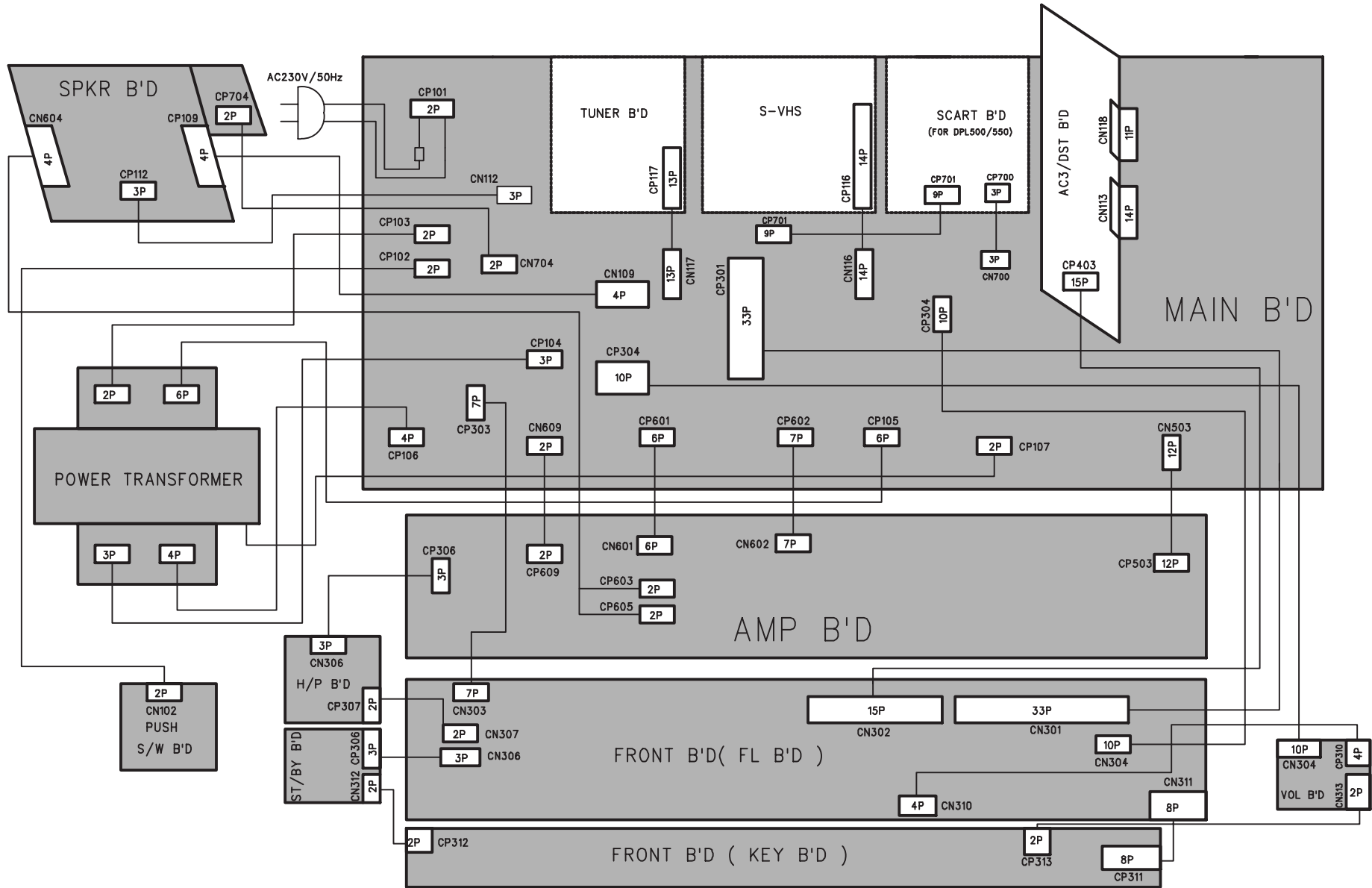


CS4226

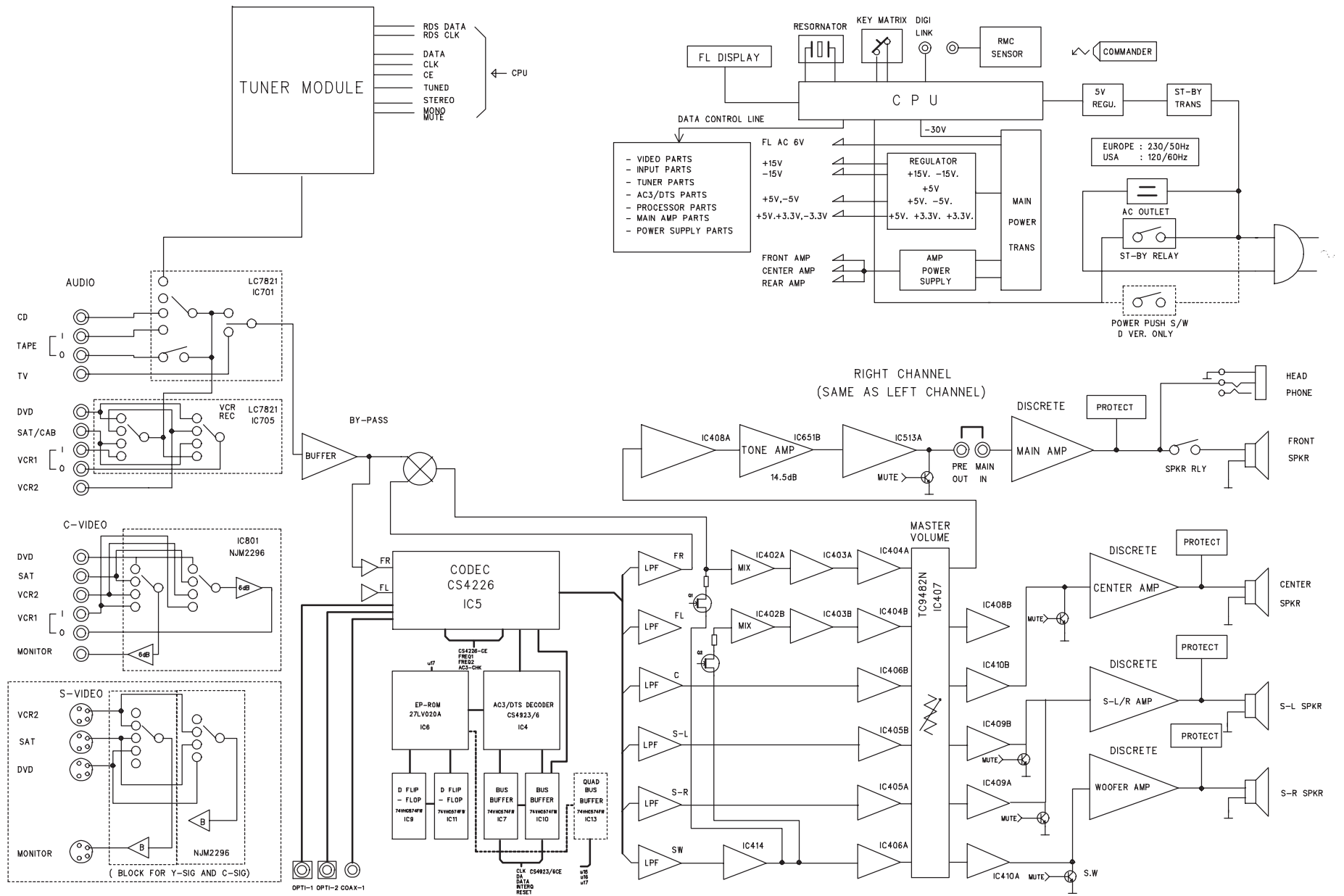
Solder side
 Côté soudure
 Lötseite
 Lato saldature
 Lado del cobre



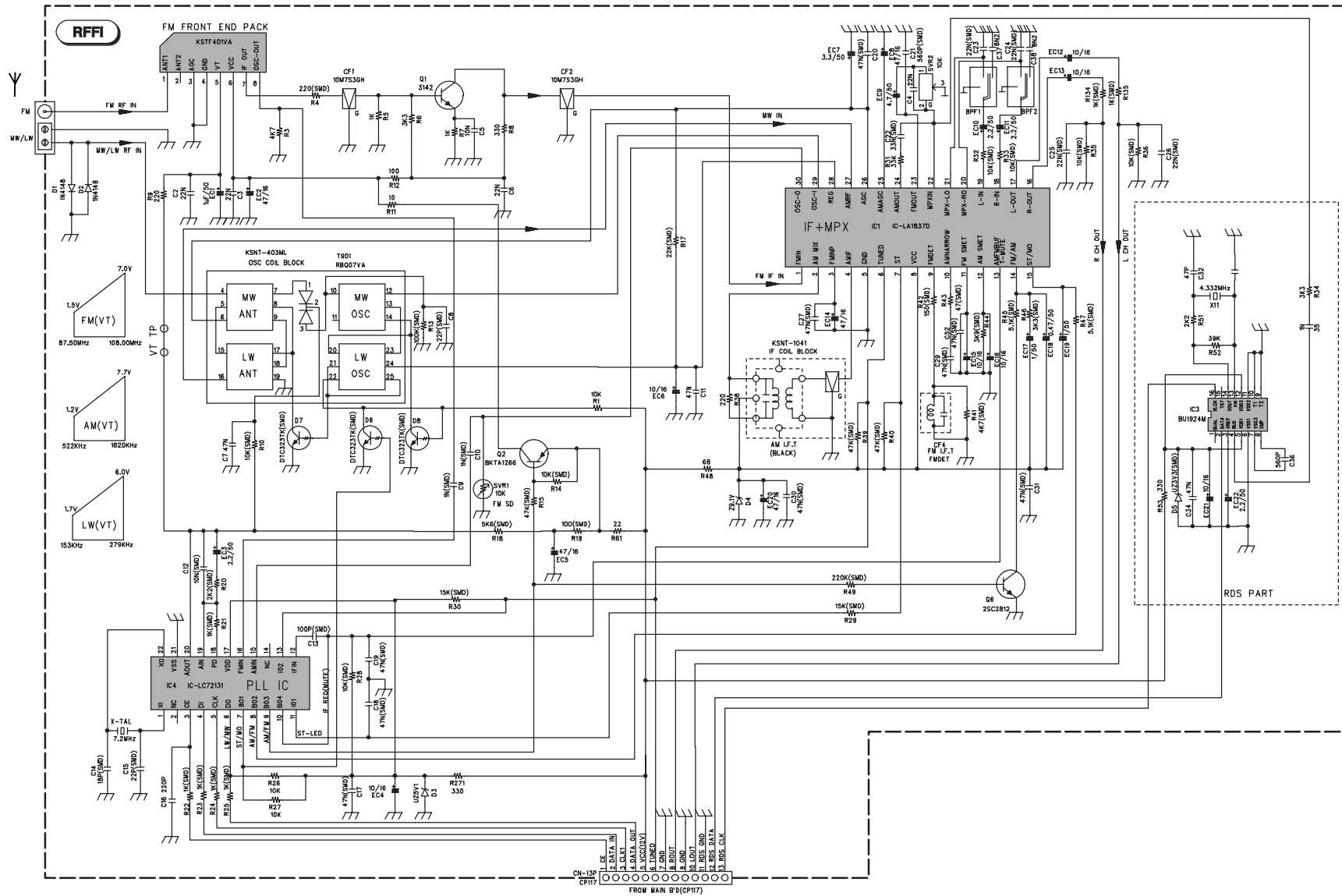
WIRING DIAGRAM - SCHEMA D'INTERCONNESSIONS - VERDRÄHTUNGSPLAN - DIAGRAMMA DELLE INTERCONNESSIONI - ESQUEMA DE INTERCONEXIONES



BLOCK DIAGRAM - SCHEMA SYNOPTIQUE - BLOCKSCHALTBIKD - SCHEMA A BLOCCHI - ESQUEMA DE BLOQUES

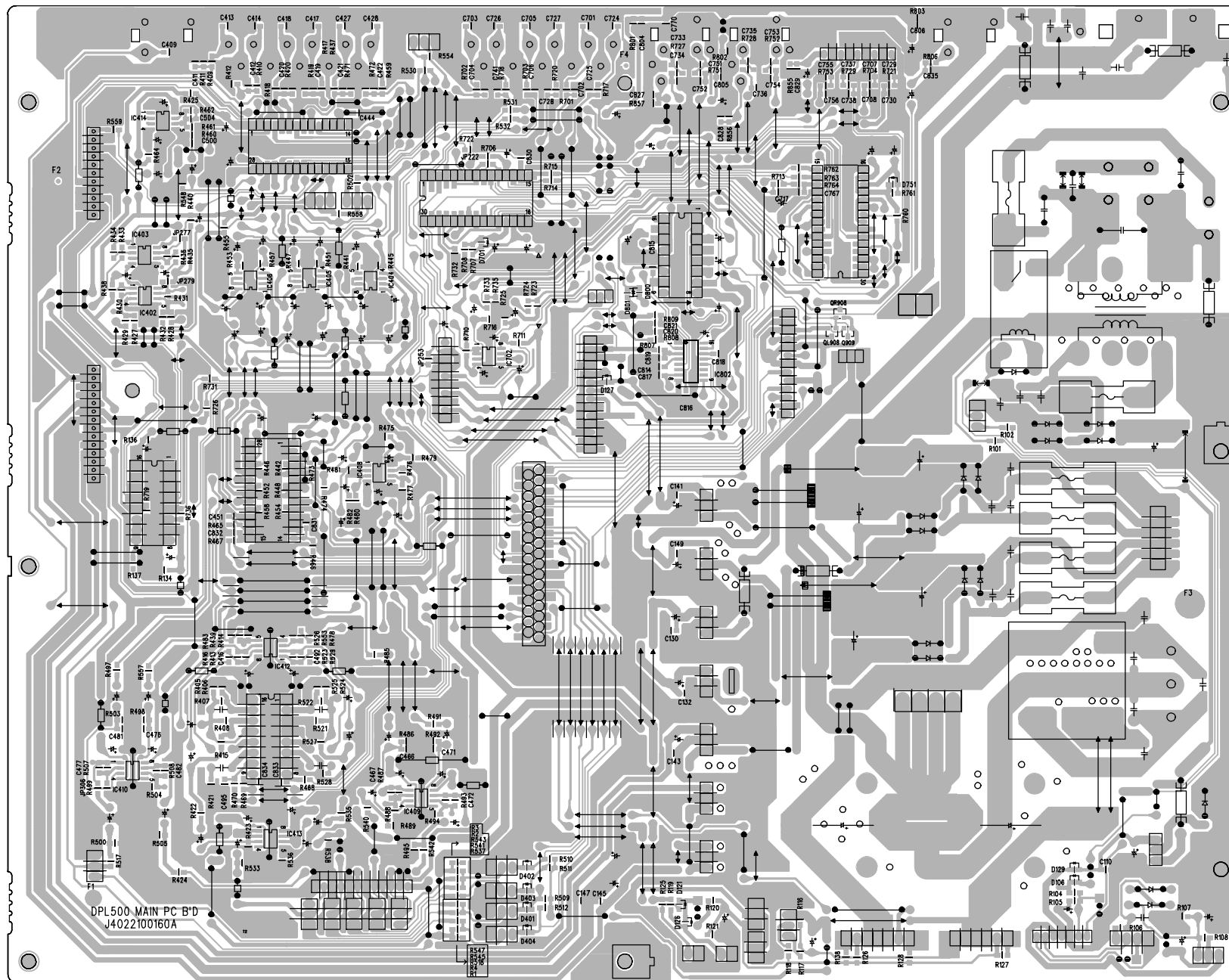
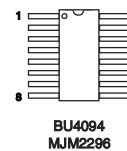
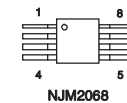


RF / FI SCHEMATIC DIAGRAM - SCHEMA HF / FI - SCHALTBILD HF / ZF - SCHEMA HF / FI - ESQUEMA RF / FI

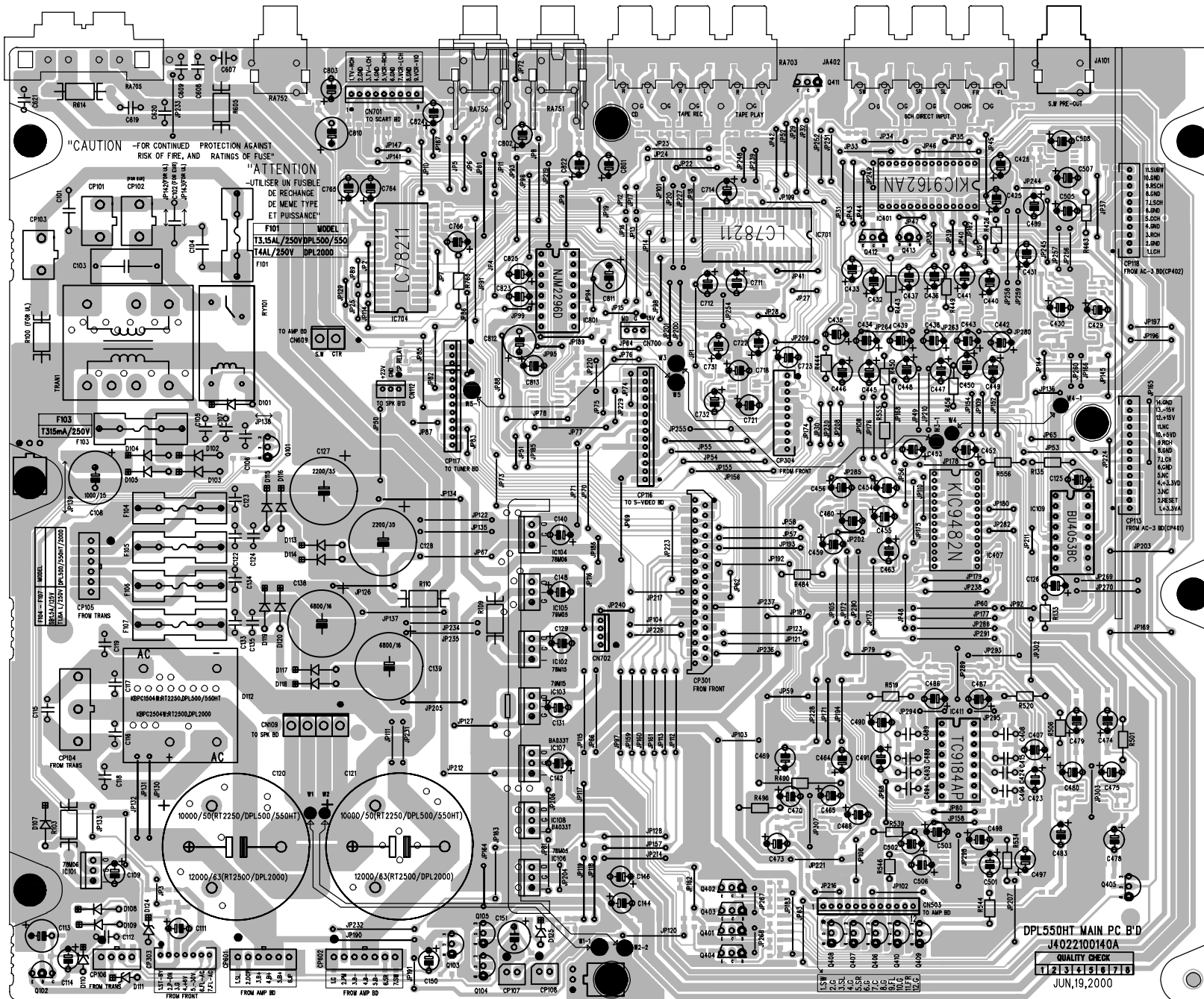


Main P.C.B.
Platine principale
Grundplatte
Piastra principale
Platina principal

Solder side
 Côté soudure
 Lötseite
 Lato saldature
 Lado del cobre



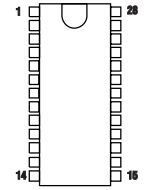
DPL500 MAIN PC B'D
 J4022100160A



DPL 550HT

**Main P.C.B.
Platine principale
Grundplatte
Platina principal**

Component side
Côté composants
Bestückungsseite
Lado componenti
Lado componentes



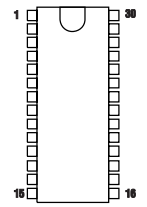
**KIC9162AN
KIC9482N**



MPSA56



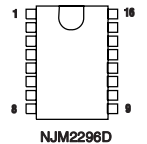
**2SC1740S
BKTA1286
KTD1302**



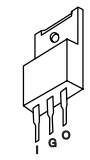
LC78211



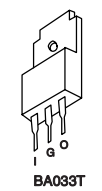
2SK117Y



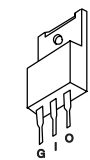
**NJM2296D
BU4053BC
TC9184AP**



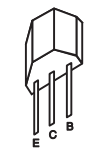
**78M15
78M05
78M06
KIA7805A**



BA033T



**79M05
79M15**



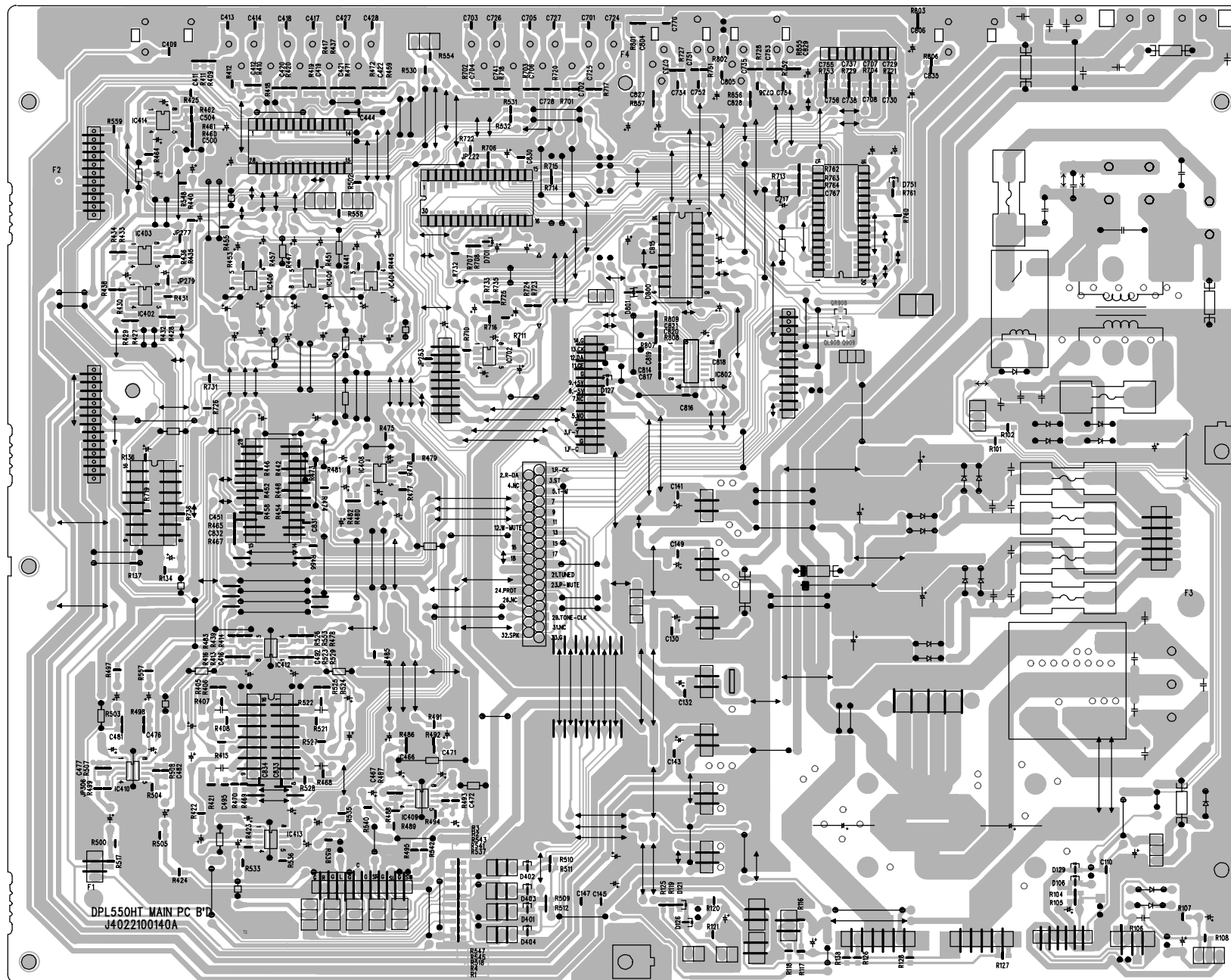
**DTA114YS
DTC114TS**

DPL550HT MAIN PC B'D
J4022100140A
QUALITY CHECK
112131415161718
JUN,19,2000

DPL 550HT

Main P.C.B.
Platine principale
Grundplatte
Plastra principale
Platina principal

Solder side
Côté soudure
Lötseite
Lato saldature
Lado del cobre



DPL550HT MAIN PC B'D
J4022100140A