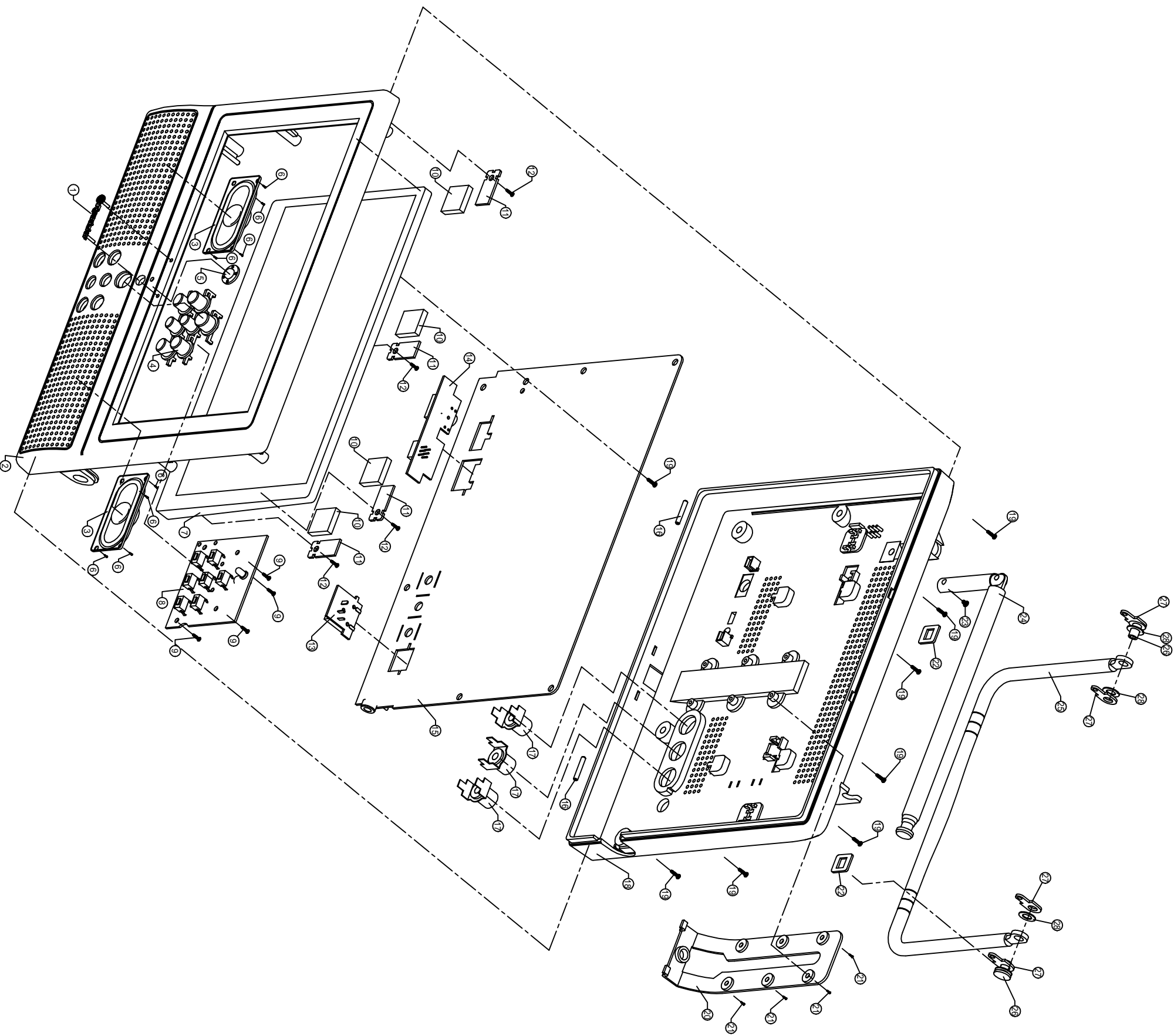




LCD-7114KL

Service Manual - LCD-7114KL

1-4	0.05	A
5-16	0.07	
17-100	0.10	
101-250	0.20	
251-500	0.30	



ITEM	DESCRIPTION	QTY	ITEM	DESCRIPTION	QTY
14	Battery Charge PCB	1	28	Stand Washer	2
13	DC Jack PCB	1	27	Stand Junction Plate	4
12	Screw Pk2, 6X6mm	4	26	Stand Junction Post	2
11	Panel Fixed Plate	4	25	Stand	1
10	Fixed Sponge	4	24	Rod Antenna	1
9	Screw BA2X6mm	4	23	Screw PH3X6mmP/IL	1
8	Control Key PCB	1	22	Stand Holding Plate	2
7	TFT Panel	1	21	Screw BA2X6mm	6
6	Screw BA2X6mm	8	20	Wall Mount Bracket	1
5	Remote Lens	1	19	Screw P3X10mm	8
4	Control Knob	1	18	Back Cabinet	1
3	Speaker	2	17	RCA Jack	3
2	Front Cabinet	1	16	Stand Shaft	2
1	Badge	1	15	Main PCB	1

E
MATERIAL FINISHING
DESIGNED BY
APPROVED BY

CALESTRYUN
1:1 1 mm

LCD-7114KL Bill of Material (SHARP Panel)

No.	Part No.	Description	Qty	Part Location
1		Electronic Parts		
2	011-B000A-200	SMD Resistor (0603) 0 OHM (OPEN)	2	R174、 R179 or R175、 R181
3	011-B229A-200	SMD Resistor (0603) 0.25 OHM +/-5%	1	R206
4	011-B100A-200	SMD Resistor (0603) 10 OHM +/-5%	1	R139
5	011-B220A-200	SMD Resistor (0603) 22 OHM +/-5%	3	R151、 R158、 R166
6	011-B330A-200	SMD Resistor (0603) 33 OHM +/-5%	1	R131
7	011-B470A-200	SMD Resistor (1206) 47 OHM +/-5%	1	R138
8	011-B750A-200	SMD Resistor (1206) 75 OHM +/-5%	2	R173、 R193
9	011-B101A-200	SMD Resistor (1206) 100 OHM +/-5%	9	R7*、 R39、 R41、 R49、 R50 R121、 R160、 R180*、 R183*
10	011-B121A-200	SMD Resistor (0603) 120 OHM +/-5%	2	R5、 R23
11	011-B151A-200	SMD Resistor (0603) 150 OHM +/-5%	1	R152
12	011-B1581A-200	SMD Resistor (0603) 180 OHM +/-5%	1	R205
13	011-B221A-200	SMD Resistor (0603) 220 OHM +/-5%	2	R119、 R120
14	011-B331A-200	SMD Resistor (0603) 330 OHM +/-5%	2	R60、 R118
15	011-B391A-200	SMD Resistor (0603) 390 OHM +/-5%	3	R79、 R129、 R135
16	011-B471A-200	SMD Resistor (0603) 470 OHM +/-5%	4	R14、 R16、 R146、 R147
17	011-B511A-200	SMD Resistor (1206) 510 OHM +/-5%	1	R6
18	011-B561A-200	SMD Resistor (0603) 560 OHM +/-5%	9	R22、 R61、 R74、 R76、 R77 R78、 R81、 R83、 R117

LCD-7114KL Bill of Material (SHARP Panel)

No.	Part No.	Description	Qty	Part Location
19	011-B681A-200	SMD Resistor (0603) 680 OHM +/-5%	2	R150、 R156
20	011-B821A-200	SMD Resistor (0603) 820 OHM +/-5%	1	R116
21	011-B102A-200	SMD Resistor (0603) 1K OHM +/-5%	13	R13、 R20、 R34、 R45、 R46 R47、 R68、 R113、 R125、 R127 R145、 R214*、 R101
22	011-B102A-200	SMD Resistor (0603) 1K OHM +/-5%	1	R16A1 (OPTIONAL)
23	011-B152A-200	SMD Resistor (0603) 1.5 OHM +/-5%	4	R1、 R2、 R148、 R208
24	011-B202A-200	SMD Resistor (0603) 2K OHM +/-5%	2	R212、 R213*
25	011-B222A-200	SMD Resistor (0603) 2.2K OHM +/-5%	8	R115、 R143、 R159、 R162、 R165 R168、 R169、 R171
26	011-B272A-200	SMD Resistor (0603) 2.7K OHM +/-5%	2	R48、 R62
27	011-B332A-200	SMD Resistor (0603) 3.3K OHM +/-5%	4	R70、 R59、 R213、 R216*
28	011-B362A-200	SMD Resistor (0603) 3.6K OHM +/-5%	1	R53
29	011-B472A-200	SMD Resistor (0603) 4.7K OHM +/-5%	4	R12*、 R58、 R97、 R149
30	011-B682A-200	SMD Resistor (0603) 6.8K OHM +/-5%	3	R137、 R155、 R167
31	011-B822A-200	SMD Resistor (0603) 8.2K OHM +/-5%	2	R32、 R64
32	011-B822A-200	SMD Resistor (0603) 8.2K OHM +/-5%	1	R18 (OPTIONAL)
33	011-B103A-200	SMD Resistor (0603) 10K OHM +/-5%	35	R15、 R24、 R35、 R37、 R38 R55、 R63、 R84、 R87、 R88 R90、 R92、 R93、 R96、 R98 R99、 R100、 R103、 R106、 R215*

LCD-7114KL Bill of Material (SHARP Panel)

No.	Part No.	Description	Qty	Part Location
				R122、 R124、 R133、 R141、 R142
				R144、 R161、 R163、 R176、 R184
				R189、 R190、 R192、 R209、 R218*
34	011-B123A-200	SMD Resistor (0603) 12K OHM +/-5%	1	R36
35	011-B153A-200	SMD Resistor (0603) 15K OHM +/-5%	3	R26、 R170、 R187
36	011-B183A-200	SMD Resistor (0603) 18K OHM +/-5%	5	R8、 R30、 R69、 R128、 R207
37	011-B203A-200	SMD Resistor (0603) 20K OHM +/-5%	8	R65、 R86、 R89、 R178、 R185
				R188、 R194、 R195
38	011-B223A-200	SMD Resistor (0603) 22K OHM +/-5%	13	R71、 R85、 R91、 R94、 R95
				R102、 R110、 R111、 R112、 R114
				R123、 R126、 R164
39	011-B243A-200	SMD Resistor (0603) 24K OHM +/-5%	1	R51
40	011-B273A-200	SMD Resistor (0603) 27K OHM +/-5%	1	R66
41	011-B333A-200	SMD Resistor (0603) 33K OHM +/-5%	13	R3、 R9、 R25、 R29、 R31
				R33、 R67、 R72、 R104、 R107
				R108、 R109、 R130
42	011-B393A-200	SMD Resistor (0603) 39K OHM +/-5%	6	R17、 R19、 R27、 R28、 R132
				R136
43	011-B473A-200	SMD Resistor (0603) 47K OHM +/-5%	9	R21、 R54、 R105、 R140、 R153
				R154、 R211、 R217*、 R196*
44	011-B683A-200	SMD Resistor (0603) 68K OHM +/-5%	2	R57、 R43

LCD-7114KL Bill of Material (SHARP Panel)

No.	Part No.	Description	Qty	Part Location
45	011-B104A-200	SMD Resistor (0603) 100K OHM +/-5%	1	R172
46	011-B224A-200	SMD Resistor (0603) 220K OHM +/-5%	2	R4、 R73
47	011-B513A-200	SMD Resistor (0603) 51K OHM +/-5%	1	R10 (OPTIONAL)
48	011-B564A-200	SMD Resistor (0603) 560K OHM +/-5%	2	R75、 R80
49	011-B105A-200	SMD Resistor (0603) 1M OHM +/-5%	3	R40、 R82、 R157
50				
51	011-E020A-200	SMD Semi-Fixed Resistor (3X3mm) 2K OHM	1	VR1
52	011-E104A-200	SMD Semi-Fixed Resistor (3X3mm) 100K OHM	1	VR2
53				
54	014-B103C-500	SMD Ceramic Capacitor (0603) 0.01uF/50V +/-10%	43	C5、 C10、 C15、 C16、 C22 C24、 C27、 C30、 C34、 C45 C46、 C47、 C48、 C63、 C95 C100、 C105、 C111、 C117、 C119 C121、 C125、 C129、 C130、 C131 C137、 C139、 C147、 C154、 C155 C157、 C158、 C159、 C162、 C163 C164、 C165、 C166、 C169、 C171 C178、 C179、 C180
55	014-B104B-800	SMD Ceramic Capacitor (0603) 0.1uF/50V +80/20%	42	C37、 C38、 C40、 C41、 C44 C49、 C50、 C51、 C52、 C54 C57、 C58、 C59、 C60、 C66

LCD-7114KL Bill of Material (SHARP Panel)

No.	Part No.	Description	Qty	Part Location
				C68, C71, C72, C73, C74
				C76, C77, C78, C79, C83
				C84, C85, C86, C87, C88
				C89, C96, C99, C102, C106
				C107, C108, C109, C145, C150
				C191*, C192*
56	014-B224B-800	SMD Ceramic Capacitor (0603) 0.22uF/50V +/-20%	4	C90, C133, C134, C161
57	014-B474B-800	SMD Ceramic Capacitor (0603) 0.47uF/50V +/-20%	4	C18, C20, C35, C156
58	014-B105B-800	SMD Ceramic Capacitor (0603) 1uF/50V +80/-20%	21	C8, C43, C53, C56, C69
				C80, C116, C124, C135, C142
				C143, C146, C160, C168, C170
				C182, C183*, C184*, C185, C194
				C195
59	014-B100C-800	SMD Ceramic Capacitor (0603) 10pF/50V +/-1p	1	C64
60	014-B220C-800	SMD Ceramic Capacitor (0603) 22pF/50V +/-10%	1	C153
61	014-B240C-800	SMD Ceramic Capacitor (0603) 24pF/50V +/-10%	1	C172
62	014-B330C-800	SMD Ceramic Capacitor (0603) 33pF/50V +/-10%	2	C92, C93
63	014-B390C-800	SMD Ceramic Capacitor (0603) 39pF/50V +/-10%	1	C174
64	014-B820C-800	SMD Ceramic Capacitor (0603) 82pF/50V +/-10%	1	C81
65	014-B101C-800	SMD Ceramic Capacitor (0603) 100pF/50V +/-10%	7	C11, C103, C114, C115, C173
				C186*, C187*

LCD-7114KL Bill of Material (SHARP Panel)

No.	Part No.	Description	Qty	Part Location
66	014-B181C-800	SMD Ceramic Capacitor (0603) 180pF/50V +/-10%	1	C136
67	014-B221C-800	SMD Ceramic Capacitor (0603) 220pF/50V +/-10%	2	C61、 C140
68	014-B331C-800	SMD Ceramic Capacitor (0603) 330pF/50V +/-10%	1	C67
69	014-B471C-800	SMD Ceramic Capacitor (0603) 470pF/50V +/-10%	8	C17、 C25、 C31、 C32、 C33 C75、 C110、 C118
70	014-B561C-800	SMD Ceramic Capacitor (0603) 560pF/50V +/-10%	1	C55
71	014-B102C-800	SMD Ceramic Capacitor (0603) 1000pF/50V +/-20%	2	C62、 C91
72	014-B152C-800	SMD Ceramic Capacitor (0603) 1500pF/50V +/-20%	1	C196
73	014-B222C-800	SMD Ceramic Capacitor (0603) 2200pF/50V +/-20%	3	C148*、 C149、 C151
74				
75	004-0S187-S00	SMD Diode 1SS187 (ST-23)	5	D1、 D4、 D6、 D9、 D14*
76	004-05819-000	SMD Diode 1N5819 (5025)	6	D2、 D3、 D5、 D15、 D16 D17
77	004-00311-S00	SMD Diode 1SS311 (SOT-23)	1	D7
78	004-00355-S00	SMD Diode MA335 (MIN12)	1	D10
79	004-08051-S00	SMD Diode MA8051-M (MIN12-F1)	2	D11、 D12
80	004-0A716-S00	SMD Diode MA716 (SOT-23)	1	D13
81	004-0VM14-S00	SMD Diode HVM14 (SOT-23)	2	D19*、 D20*
82				
83	003-04672-S00	SMD Transistor 2SC4672 (SOT-89)	2	Q1、 Q2
84	003-01203-F00	SMD Transistor 2SB1203 (OPAK)	1	Q3

LCD-7114KL Bill of Material (SHARP Panel)

No.	Part No.	Description	Qty	Part Location
85	003-03411-S00	SMD Transistor AO3411 (SOT-23)	1	Q4*
86	003-01188-S00	SMD Transistor 2SB1188 (SOT-89)	1	Q5
87	003-01815-S00	SMD Transistor 2SC1815 (SOT-23)	5	Q6、 Q7*、 Q17、 Q18、 Q21*
	003-01203-S00			
88	003-03055-S00	SMD Transistor 3055L-108 (SOT-223)	1	Q8
89	003-02411-S00	SMD Transistor 2SC2411 (SOT-23)	1	Q9
90	003-02369-S00	SMD Transistor PH2369 (SOT-23)	1	Q10
91	003-01015-S00	SMD Transistor 2SA1015 (SOT-23)	5	Q11、 Q12、 Q13、 Q19、 Q20*
92	003-04376-S00	SMD Transistor KTC4376 (SOT-89)	2	Q14、 Q15
93	003-09018-S00	SMD Transistor 2SC9018 (SOT-23)	1	Q16
94				
95	002-04601-D00	IC XN4601 (SC-74)	2	U1、 U3
96	002-02001-D00	IC AP2001 (SOP-16)	1	U2
97	002-03Y26-H00	IC IR3Y26A (QFP-48)	1	U4
98	002-02107-U00	IC NJM2107F (SMP-5)	1	U5
99	002-9GLJ24-H00	IC LZ9GJ24 (QFP-72)	1	U6
100	002-04069-D00	IC MC4069 (SOP-14)	1	U7
101	002-03414-G00	IC NJM3414AM (SOP-8)	1	U8
102	002-24C16-G00	IC 24C16N-10SC (SOP-8)	1	U9
103	002-37160-D00	IC M37160MA (SSOP-42)	1	U10
104	002-61260-H00	IC M61260FP (QFP-64L)	1	U14

LCD-7114KL Bill of Material (SHARP Panel)

No.	Part No.	Description	Qty	Part Location
105	002-04052-D00	IC MC4052 (SOP-16)	2	U15、 U17
106	002-34063-D00	IC MC34063 (SOP-8)	1	U19
107				
108	002-H0105-000	SMD Inductor 1UH (1206)	1	L12
109	002-H0336-000	SMD Inductor 33UH (1206)	1	L11
110	002-H0601-000	SMD Ferrite Bead 600R/1A (0805)	3	FB1、 FB2、 FB3
111	002-09870-0S0	SMD Transformer S9870SP	1	T1
112	002-0EI140-0S0	SMD Transformer EI14.5-30534 (EI14-5)	1	T2
113				
114	002-G0050-322	SMD FPC Socket FPC-0.5S-32P	3	CN1、 CN2、 CN3
115	002-B0400-040	SMD LCD Back light Socket BHR-04VS-1	1	J1
116				
117	012-C224F-300	Mylar Capacitor 0.22uF/50V	2	C112、 C113
118	012-C124M-300	Mylar Capacitor 0.12uF/250V	1	C3
119	0125-C106B-300	Mini Elect. Capacitor 10uF/10V (CX11X)	3	C36、 C42、 C104
120	0125-C106C-300	Mini Elect. Capacitor 10uF/16V (CX11X)	7	C82、 C101、 C122、 C126、 C144 C181、 C193
121	0125-C106F-300	Mini Elect. Capacitor 10uF/50V (CX11X)	2	C28、 C29
122	0125-C226B-300	Mini Elect. Capacitor 22uF/10V (CX11X)	1	C152
123	0125-C476B-300	Mini Elect. Capacitor 47uF/10V (CX11X)	1	C65
124	0125-C476C-300	Mini Elect. Capacitor 47uF/16V (CX11X)	4	C7、 C123、 C127、 C141

LCD-7114KL Bill of Material (SHARP Panel)

No.	Part No.	Description	Qty	Part Location
125	0125-C476D-300	Mini Elect. Capacitor 47uF/25V (CX11X)	2	C6、 C26
126	0125-C107A-300	Mini Elect. Capacitor 100uF/6.3V (CX11X)	6	C39、 C128、 C167、 C176、 C189* 190*
127	0125-C107B-300	Mini Elect. Capacitor 100uF/10V (CX11X)	2	C14、 C23
128	0125-C107C-300	Mini Elect. Capacitor 100uF/16V (CX11X)	8	C1、 C9、 C13、 C21、 C120 C138、 C177、 C188*
129	0125-C227A-300	Mini Elect. Capacitor 220uF/6.3V (CX11X)	1	C175
130	0125-C227D-300	Mini Elect. Capacitor 220uF/25V (CX11X)	2	C132、 C197
131	0125-C477D-300	Mini Elect. Capacitor 470uF/25V (CX11X)	1	C12
132	0125-C108D-300	Mini Elect. Capacitor 1000uF/25V (CX11X)	2	C132、 C198
133	014-A300F-500	Ceramic Capacitor 30PF/3KV	2	C2、 C4
134				
135	002-10180-F00	IC PIC-1018SMD	1	U11
136	002-78L09-F00	IC 78L09 (SIP-3)	1	U12
137	002-07053-B00	IC TDA7053A (DIP-16)	1	U13
138	002-78L05-F00	IC 78L05 (SIP-3)	1	U18* (OPTIONAL)
139				
140	010-A0686-200	Inductor 68UH/1A (CE-68)	1	L1
141	010-A0107-200	Inductor 100UH/0.3A (CE-46)	6	L2、 L4、 L6、 L10、 L13 L14
142	010-A0107-201	Inductor 100UH/0.5A (CE-68)	1	L16

LCD-7114KL Bill of Material (SHARP Panel)

No.	Part No.	Description	Qty	Part Location
143	010-A0107-202	Inductor 100UH/1A (Toroid Type)	1	L3
144	010-G0306-200	Inductor CE24-3R0J (CE-24)	3	L5、 L7、 L8
145	010-M0156-200	Inductor CE24-150J (CE-24)	1	L9
146	007-1801A-5BK	IFT 1801A (5x5x5mm)	1	L15
147	022-F0160-000	FTP RUE160	1	F1
148	022-F0050-000	FTP RUE050	1	F2
149				
150	003-00574-S00	Diode UPC574 (TO-92)	1	D8
151	006-44336-400	Crystal PF4.433619MHz (49US)	1	Z1
152	017-B2955-C00	SAW CF2955M	1	Z2
153	025-TA020-430	Tact Switch TC-00302	7	V-1、 V+1、 TV/AV1、 POWER1、 P-1 P+1、 MENU1
154	011-A100H-200	Carbon Resister 10/1W +/-5%	1	R210
155	011-A758H-200	Carbon Resister 7R5/1W +/-5%	1	R134
156	009-DG355-AA0	TV Tuner BTH-377A(BG/DK)	1	
157	023-A0030-R00	LED D3mm Red	1	LED2
158	205-16120-40L	Speaker 16O/1W 20x40mm	2	
159	025-SK22G-050	Slide Switch SK-22D03 VG=5mm	1	D18
160	008-V701B-C00	LCD TFT Panel LQ070T5GG04S (Sharp)	1	
161				
162	028-DC004-300	DC Jack DC-004	1	JP1

LCD-7114KL Bill of Material (SHARP Panel)

No.	Part No.	Description	Qty	Part Location
163	028-03507-B05	Headphone Jack ST-3507-02	1	JP4
164	028-03528-B11	Antenna Jack CKX-3.5-02K	1	J111
165	029-R1131-010	RCA Socket RS-1131/Red	1	ARIN1
166	029-R1131-020	RCA Socket RS-1131/White	1	ALIN1
167	029-R1131-030	RCA Socket RS-1131/Yellow	1	VIN1
168				
169	031-701B0-32G	FPC Cable FP-0.5S-32P-100	1	
170	001-701BD-010	TV-701A Main PCB ZD7.820.279 VER1.1	1	
171	001-701BD-R91	TV-701A Control Key PCB ZD7.820.233 VER1.1	1	
172	001-701BD-B01	TV SECAM-L PCB ZD7.820.178 VER1.1	1	
173	001-701BD-B01	TV-701A Battery Charge PCB	1	
174	001-701BD-B01	TV-701A DC Jack PCB	1	
175				
176	030-F180U-04B	Housing PH-4 L=180+80mm/AWG#28	1	Main PCB to Two Speaker
177	036-A02000-040	Wafer PH-4	1	J112
178	030-F150U-06B	Housing PH-6 L=150mm/AWG#28	1	Main PCB to Control Key PCB
179	036-A0200-050	Wafer PH-6	2	JP2
180	033-C1200-BK0	Antenna Cable 75 OHM L=120mm	1	Main PCB to Rod Antenna Soldering Plate
181	035-D0500-BK0	Single Jumper Wire L=50mm/AWG#24 Black	1	Main PCB to TFT Panel Metal Case

LCD-7114KL Bill of Material (SHARP Panel)

No.	Part No.	Description	Qty	Part Location
182	035-D1100-RD0	Single Jumper Wire L=110mm/AWG#24 Red	1	Main PCB (BAT) to Battery Case Contact Plate (+)
183	035-D0800-BK0	Single Jumper Wire L=80mm/AWG#24 Black	1	Main PCB (BAT-2) to Battery Case Contact Plate (-)
184	035-H0700-WE0	Single Jumper Wire L=70mm/AWG#32 White	1	Main PCB (CPU-SLW) to SECAM-L PCB (AS)
185	035-H0600-YW0	Single Jumper Wire L=60mm/AWG#32 Yellow	1	Main PCB (U14 Pin-53) to SECAM-L PCB (Out)
186	035-H0500-BE0	Single Jumper Wire L=50mm/AWG#32 Green	1	Main PCB (C164 & Z2) to SECAM-L (IF)
187	035-H1100-GY0	Single Jumper Wire L=30mm/AWG#32 Grey	2	Main PCB (+5V & GND) to SECAM-L PCB (+5V & GND)
188	217-701BG-C02	Antenna Soldering Plate D3.2mm	1	
189	253-18045-000	PVC Tape Size=(W)18x (L)45mm	1	
190		Plastic Parts		
191	401-701BCB-1GY	TV-701B Front Cabinet (with "Roadstar" Badge Hole)	1	
192	401-701BA-1BK	TV-701B2 Back Cabinet (with Battery Charge function)	1	
193	426-701BA-1BK	TV-701B Control Knob Set	1	
194	495-7114D-000	LCD-7114KL "Roadstar" Badge	1	
195	413-701BD-2CR	TV-701B Remote Lens	1	
196		Metal Part		

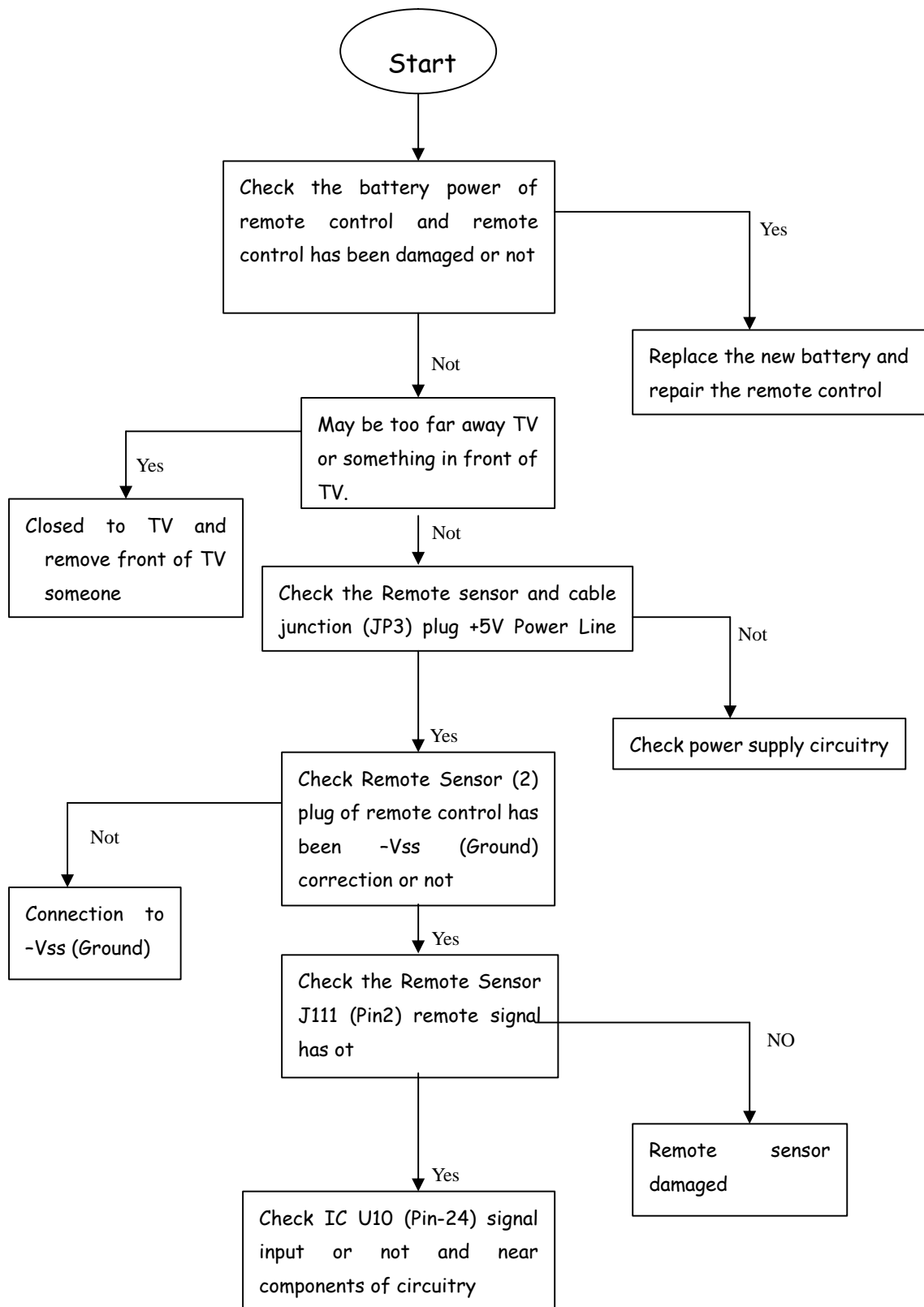
LCD-7114KL Bill of Material (SHARP Panel)

No.	Part No.	Description	Qty	Part Location
197	218-701BZ-E02	TV-701B Rubberize Stand Set	1	
198	219-701B0-G00	TV-701B Stand Fixed Metal Shaft	2	
199	217-701BE-E10	TV-701B Stand Metal Washer Size=10.2x9.0x (T)1.0mm	2	
200	217-701BT-E08	TV-701B Wall Mounting Metal Bracket	1	
201	217-701BC-E10	TV-701B TFT Panel Fixed Metal Plate	6	
202	204-80140-850	Rod Antenna (TC-80123DS-8)	1	
203	209-V7100-C00	CT-V710 Battery Metal Contact Plate Full Set	2	
204	234-PB030-100	Tapping Screw PB3.0x10mm Black	5	For Front/Back Cabinet
			1	For Main PCB
205	234-PB026-06W	Taping Screw PB2.6x6mm Nik	4	For TFT Panel
206	234-PM030-060	Metal Screw PM3.0x6mm (P/M) Black	1	For Rod Antenna
207	234-BA020-06W	Tapping Screw BA2.0x6mm Black	8	For Speaker
			4	For Control Key PCB
			6	For Wall Mounting Bracket
208	225-22012-650	Cushion 20x12x3mm (White)	6	
209		Packing Parts		
210	303-701B0-000	TV-701B Polyfoam Set	1	
211	303-701B0-100	LCD-7114KL Rating Plate "Roadstar"	1	
212	314-7114W-A10	LCD-7114KL Warranty Card "Roadstar"	1	
213	314-7114E-A10	LCD-7114KL Serial No. Label	1	
214	314-7114D-A10	LCD-7114KL Date Code No. Label		

LCD-7114KL Bill of Material (SHARP Panel)

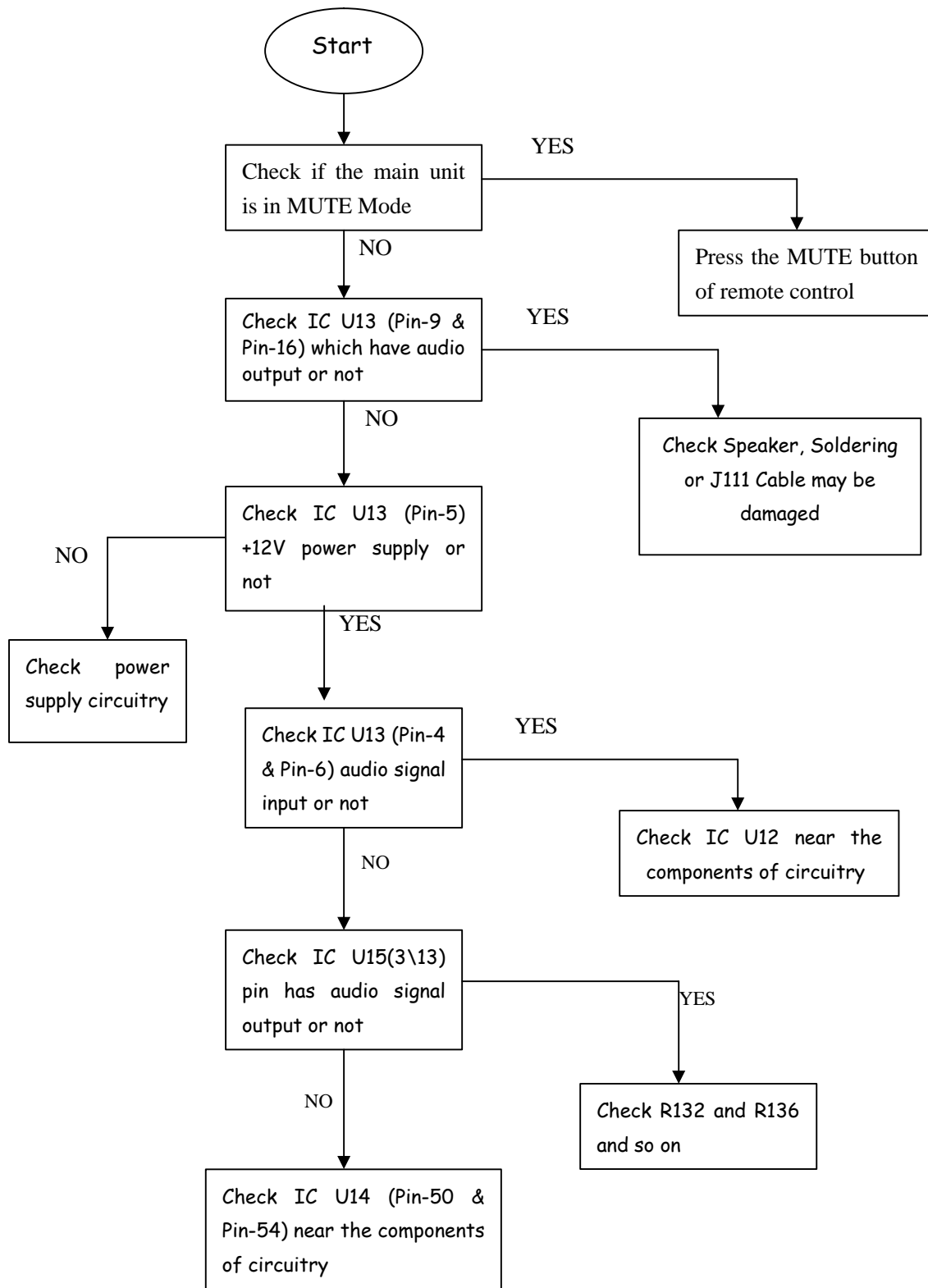
No.	Part No.	Description	Qty	Part Location
215	314-7114C-A10	LCD-7114KL Car Lighter Caution Label		
216	314-3E095-110	Main Unit PET Bag SIZE=9.5"x11"	1	
217	304-7114A-A10	LCD -7114KL Gift Box (with Magnetic Fixed Type)	1	
218	301-C3000-B00	10 Units Poly-Bag for Carton	1/10	
219	306-D7114-010	LCD-7114KL Carton (1/10)	1/10	
220	303-701B1-T00	Polyfoam Sheet (Up/Down/Front/Back/Left/Right Side) Set	6	
221	301-0C025-040	Remote Poly-Bag Size=70x130mm	1	
222	301-0C045-065	Accessory Poly Big Size=120x160mm	3	
223		Accessory Parts		
224	201-SW121-0X0	AC/DC Switching Adaptor AC230V DC12/1.2A "FJ-SW1210X" (with "Roadstar" Logo)	1	
225	034-C0202-100	3.5mm to 75 OHM Antenna adapter	1	
226	066-R7114-000	Remote Unit LCD-7114KL (with "Roadstar" Logo)	1	
227	305-B7114-000	LCD-7114KL I/B	1	
228	305-CT718-000	Stereo Earphone	1	
229	461-T718R-000	Wall Mounting stand (Optional)	1	
230	463-T718B-1BK	Battery Case #04 (with Wheel Bin Logo)	1	
231	225-12080-250	Double Side Tape for Wall Mounting stand (Optional)	1	
232	034-CT718-000	Car Cord 12V/2A (with E-Mark Approval)	1	

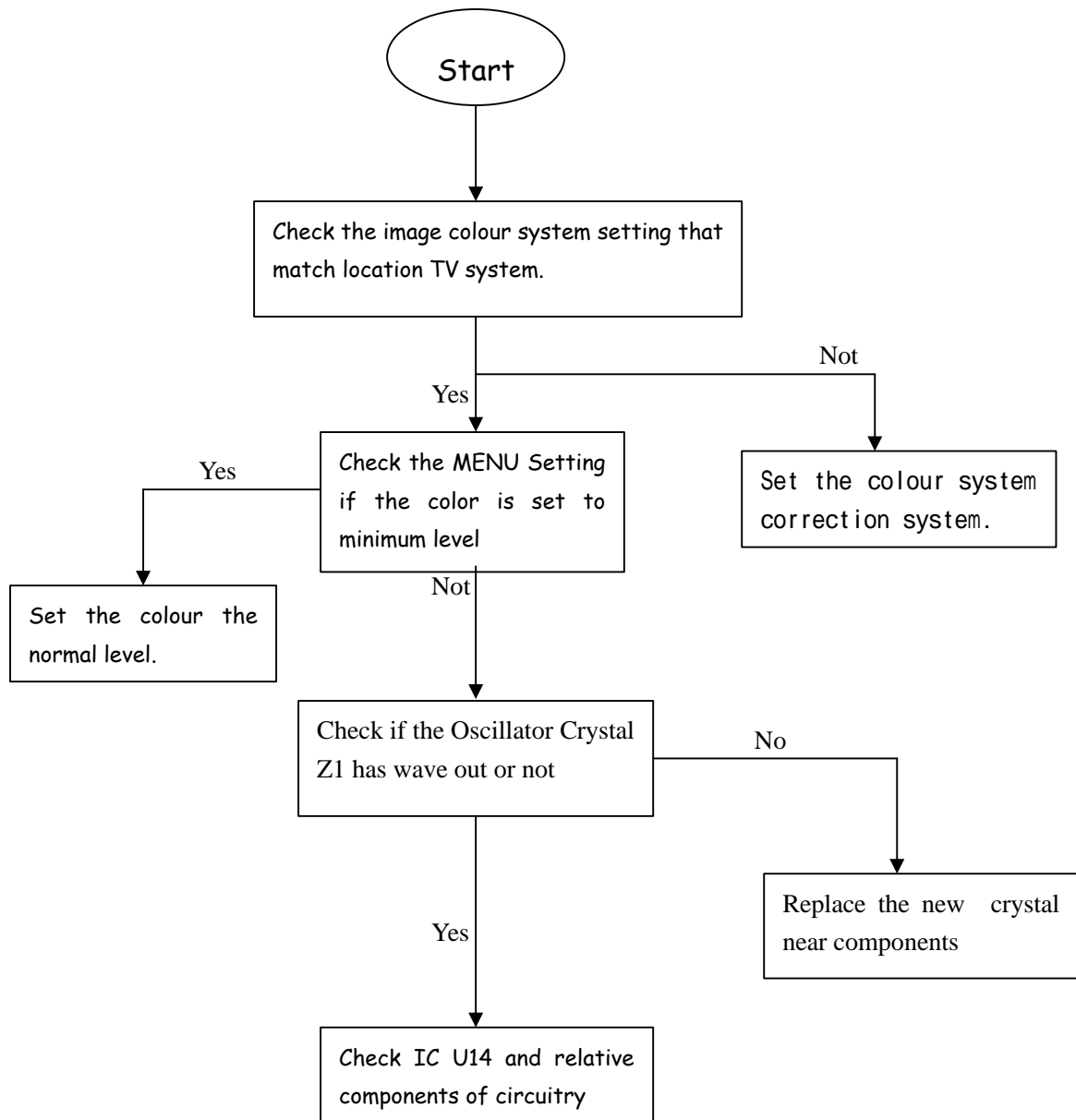
(1) Faulted Function: **Not Remote Control**



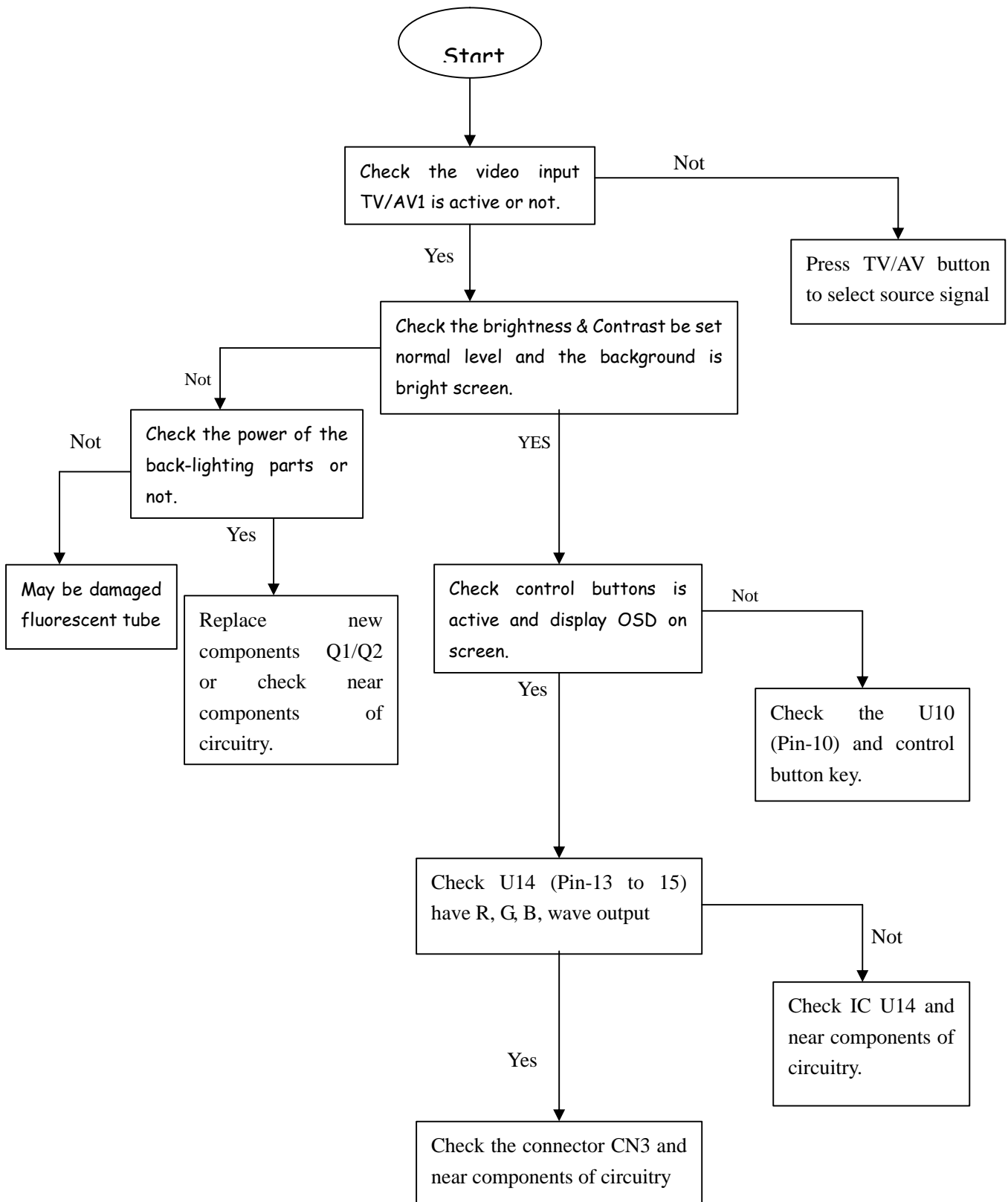
(2) Faulted Function : **Not Audio Sound (Screen Picture is normal)**

Checking Volume Level in Muting (Silent) Mode as below inspected process:

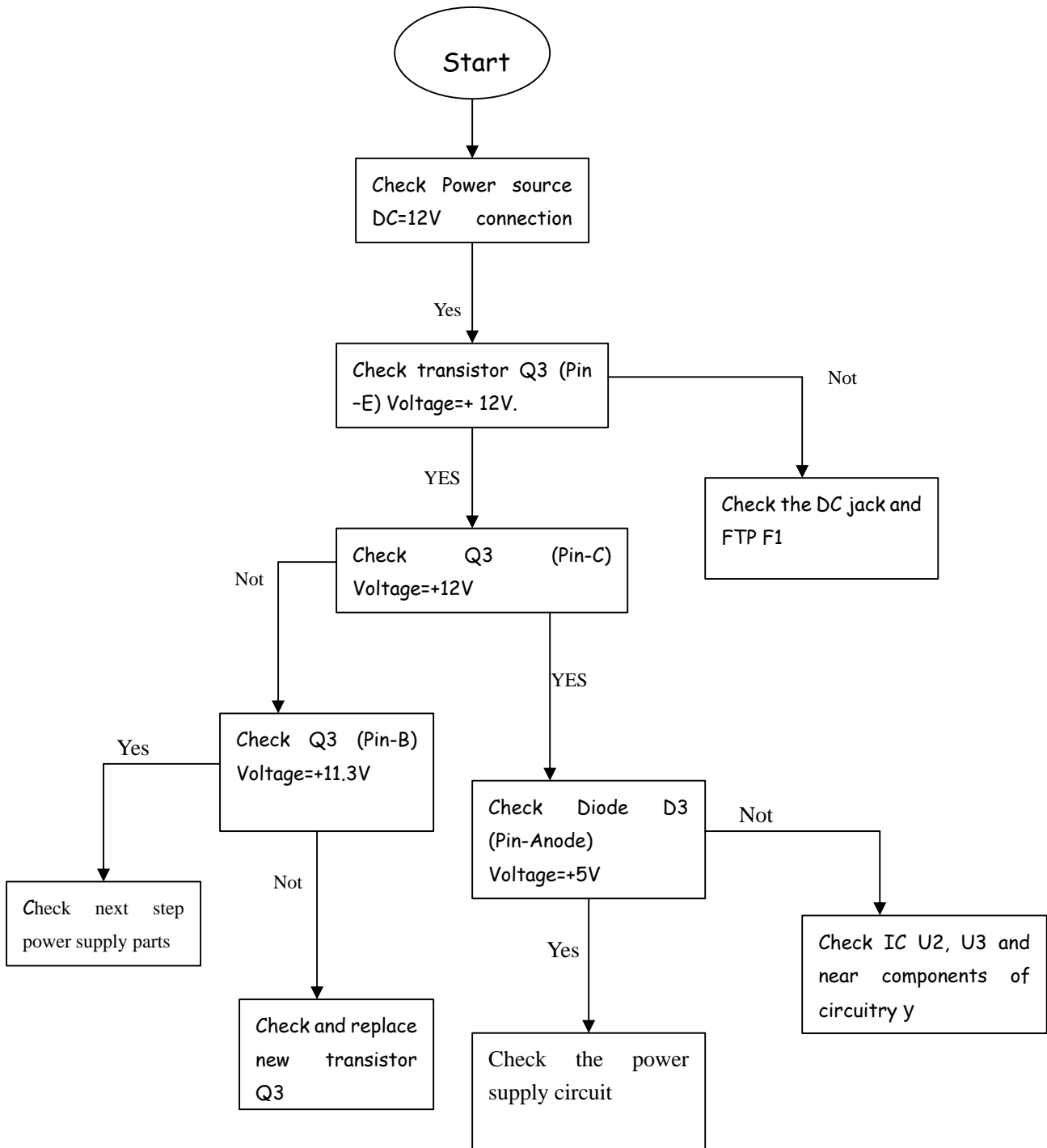


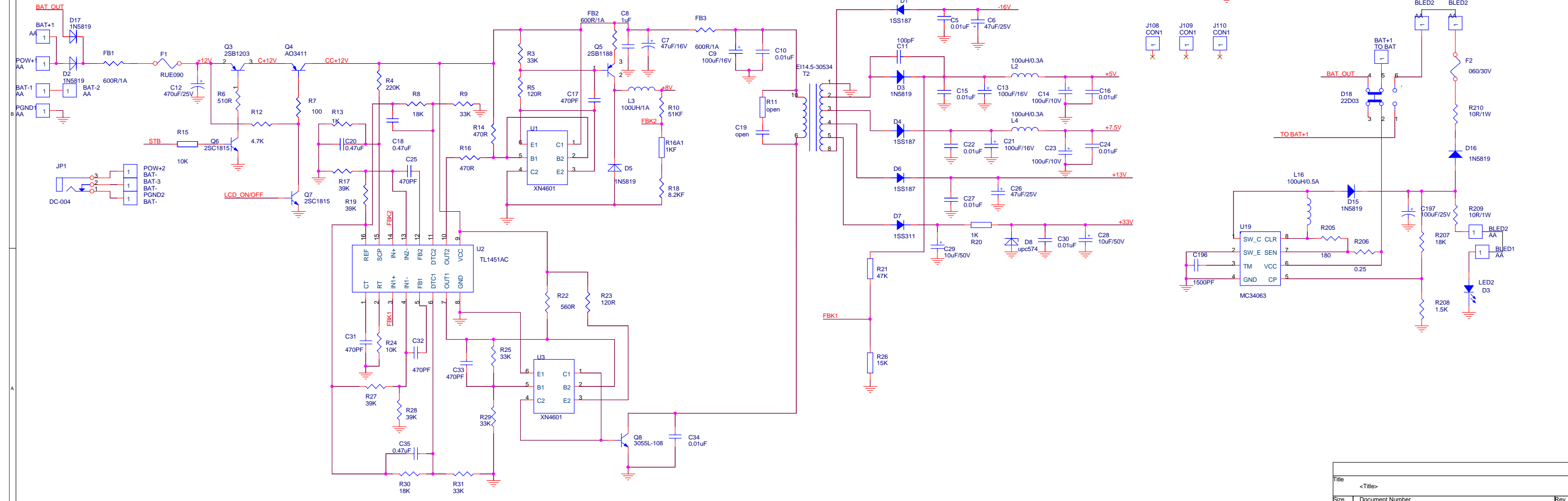
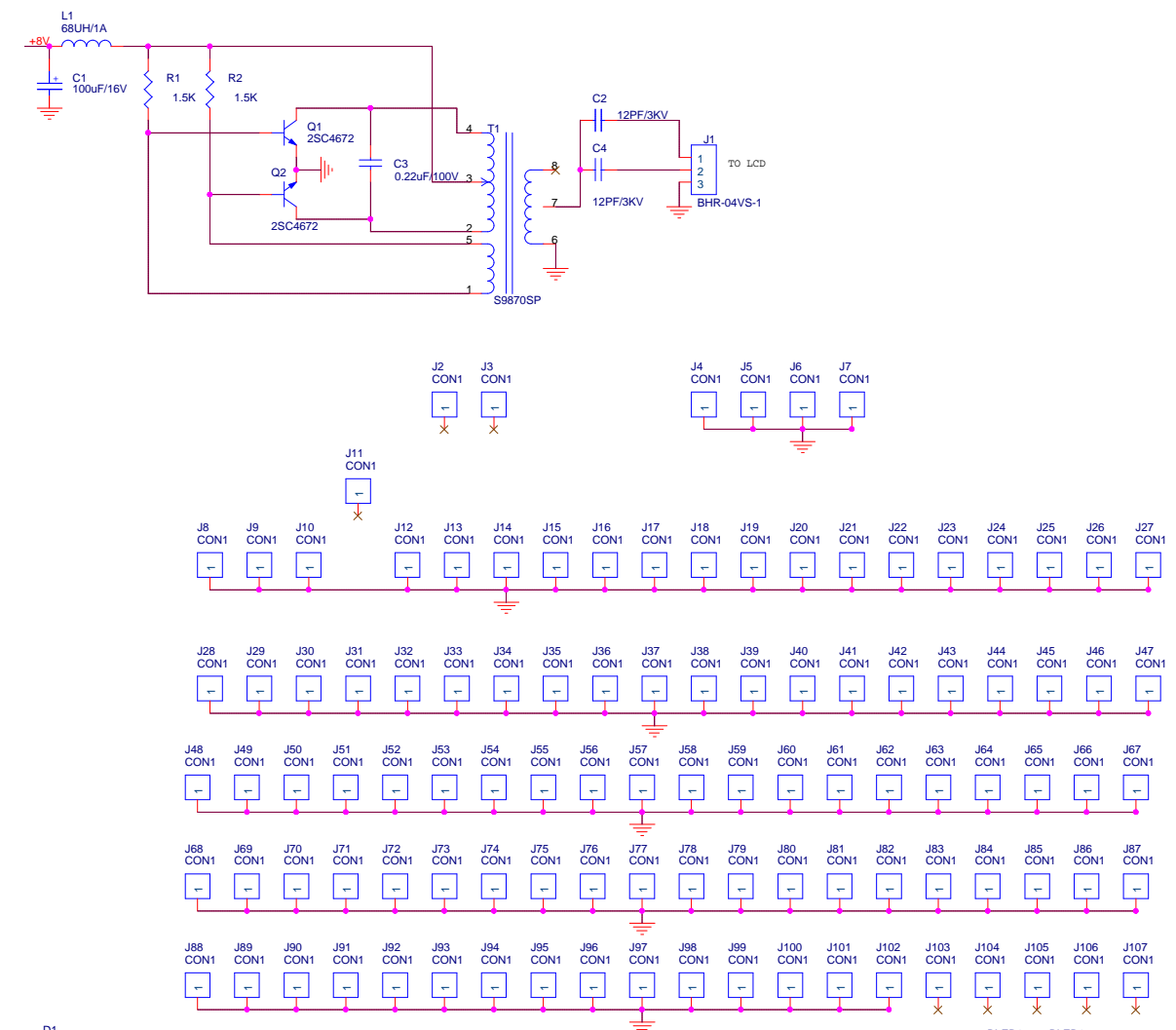
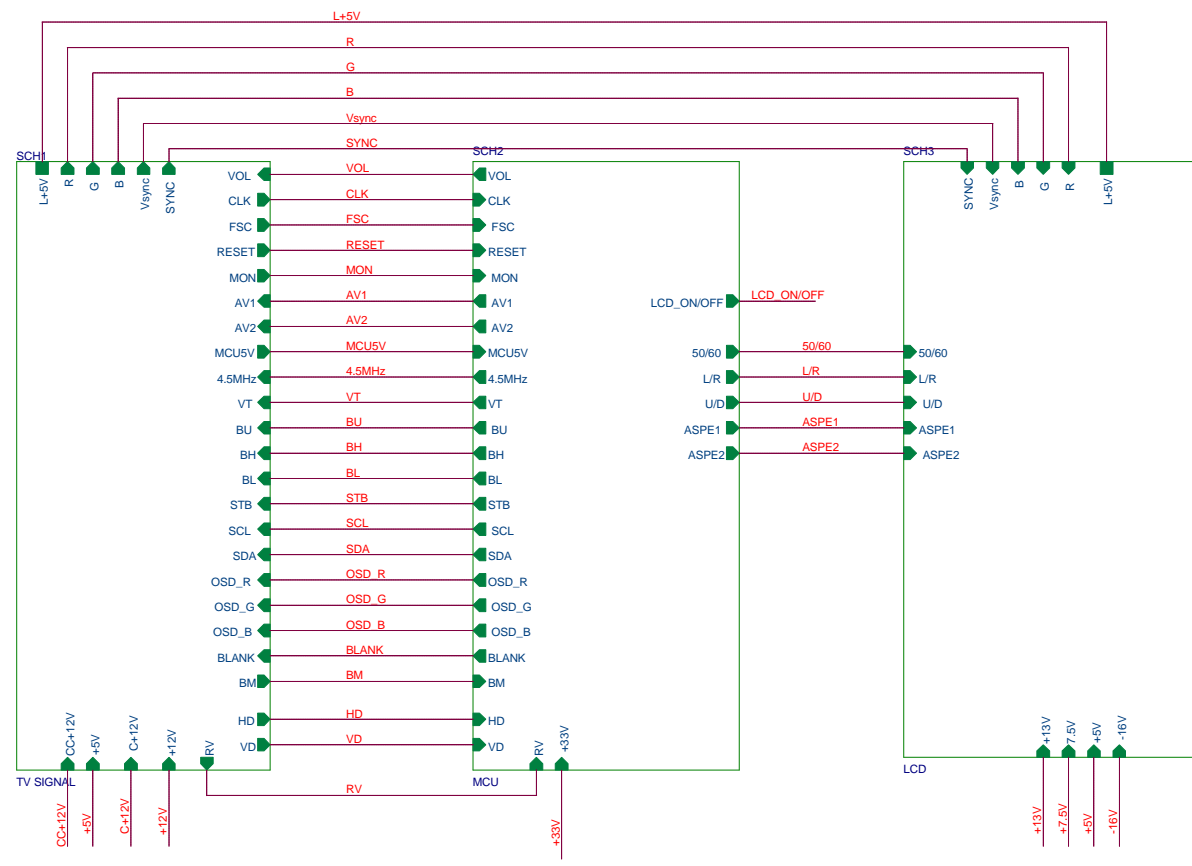
(3) Faulted Function: **Not Colour on Screen**

(4) Faulted Function: **Not Picture on screen and audio Sound is Normal.**

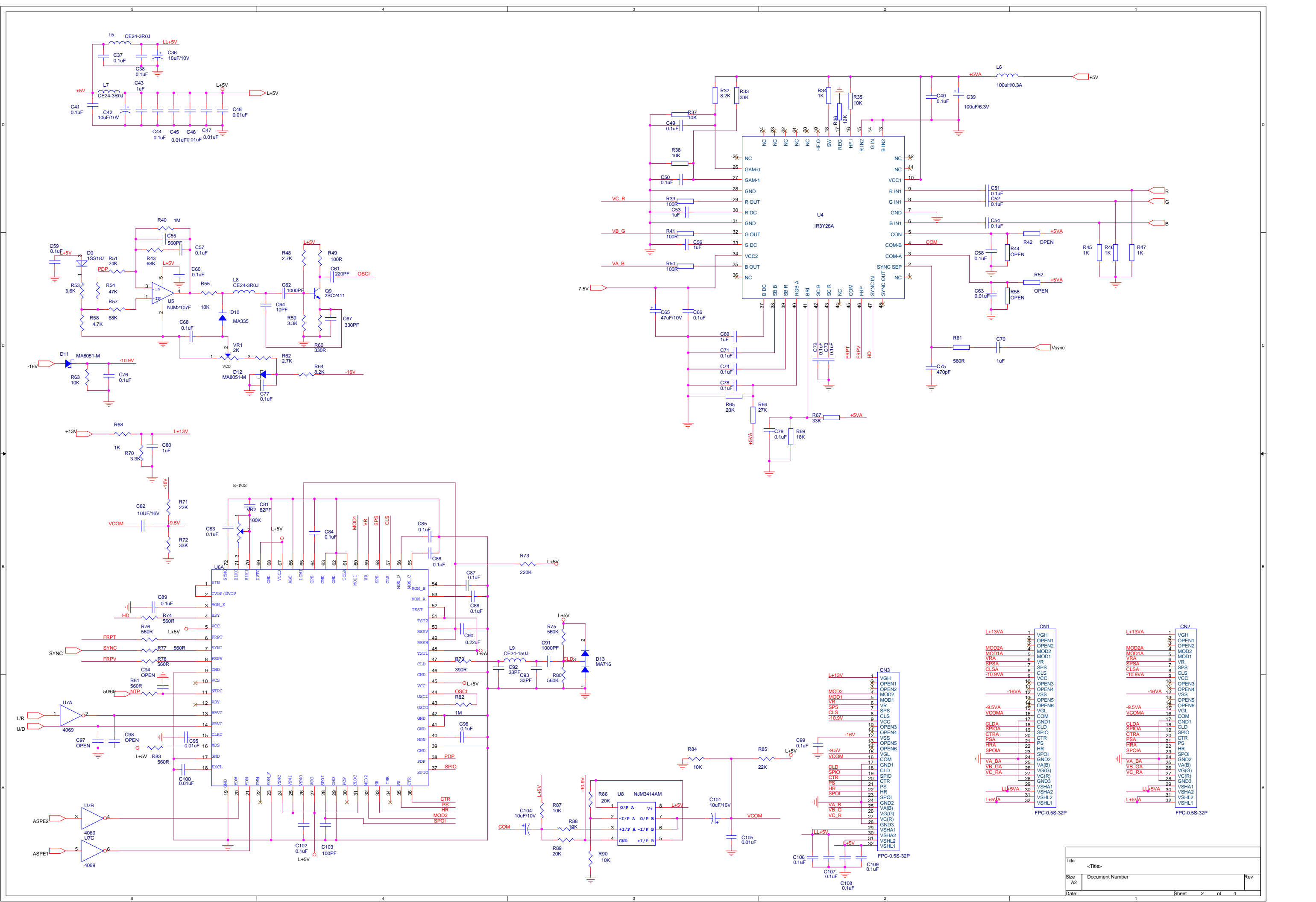


(5) Faulted function: **Not Audio Sound and Picture on Screen**





Title	<Title>		
Size	Document Number		Rev
Date:		Sheet 1 of 4	



CN1

L+13VA	1	VGH
	2	OPEN1
	3	OPEN2
MOD2A	4	MOD2
MOD1A	5	MOD1
VR A	6	VR
SPSA	7	SPS
CLSA	8	CLS
-10.9VA	9	CLS
	10	VCC
	11	OPEN3
	12	OPEN4
	13	VSS
	14	OPEN5
	15	OPEN6
-9.5VA	16	VGL
VCOMA	17	COM
	18	GND1
CLDA	19	CLD
SPIOA	20	SPIO
CTRA	21	CTR
PSA	22	PS
HRA	23	HR
SPIOA	24	SPIO
	25	GND2
VA BA	26	VA(B)
VB GA	27	VG(G)
VC RA	28	VC(R)
	29	GND3
L+5VA	30	VSHA1
	31	VSHA2
L+5VA	32	VSHL1

FPC-0.5S-32P

CN2

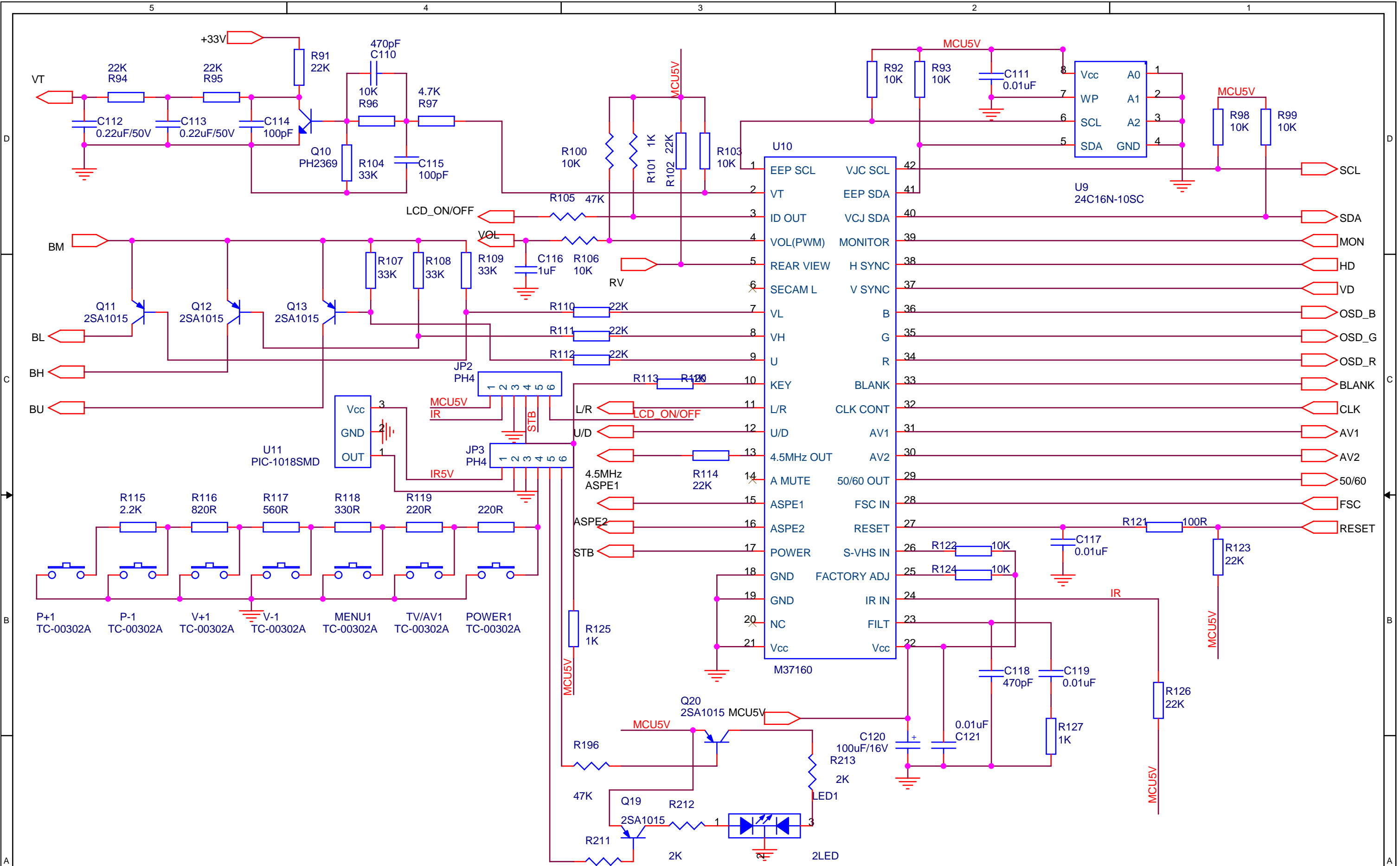
L+13VA	1	VGH
	2	OPEN1
	3	OPEN2
MOD2A	4	MOD2
MOD1A	5	MOD1
VR A	6	VR
SPSA	7	SPS
CLSA	8	CLS
-10.9VA	9	CLS
	10	VCC
	11	OPEN3
	12	OPEN4
	13	VSS
	14	OPEN5
	15	OPEN6
-9.5VA	16	VGL
VCOMA	17	COM
	18	GND1
CLDA	19	CLD
SPIOA	20	SPIO
CTRA	21	CTR
PSA	22	PS
HRA	23	HR
SPIOA	24	SPIO
	25	GND2
VA BA	26	VA(B)
VB GA	27	VG(G)
VC RA	28	VC(R)
	29	GND3
L+5VA	30	VSHA1
	31	VSHA2
L+5VA	32	VSHL1

FPC-0.5S-32P

CN3

L+13V	1	VGH
	2	OPEN1
	3	OPEN2
MOD2	4	MOD2
MOD1	5	MOD1
VR	6	VR
SPS	7	SPS
CLS	8	CLS
-10.9V	9	CLS
	10	VCC
	11	OPEN3
	12	OPEN4
	13	VSS
	14	OPEN5
	15	OPEN6
-9.5V	16	VGL
VCOM	17	COM
	18	GND1
CLD	19	CLD
SPIO	20	SPIO
CTR	21	CTR
PS	22	PS
HR	23	HR
SPIO	24	SPIO
	25	GND2
VA B	26	VA(B)
VB G	27	VG(G)
VC R	28	VC(R)
	29	GND3
L+5V	30	VSHA1
	31	VSHA2
L+5V	32	VSHL1

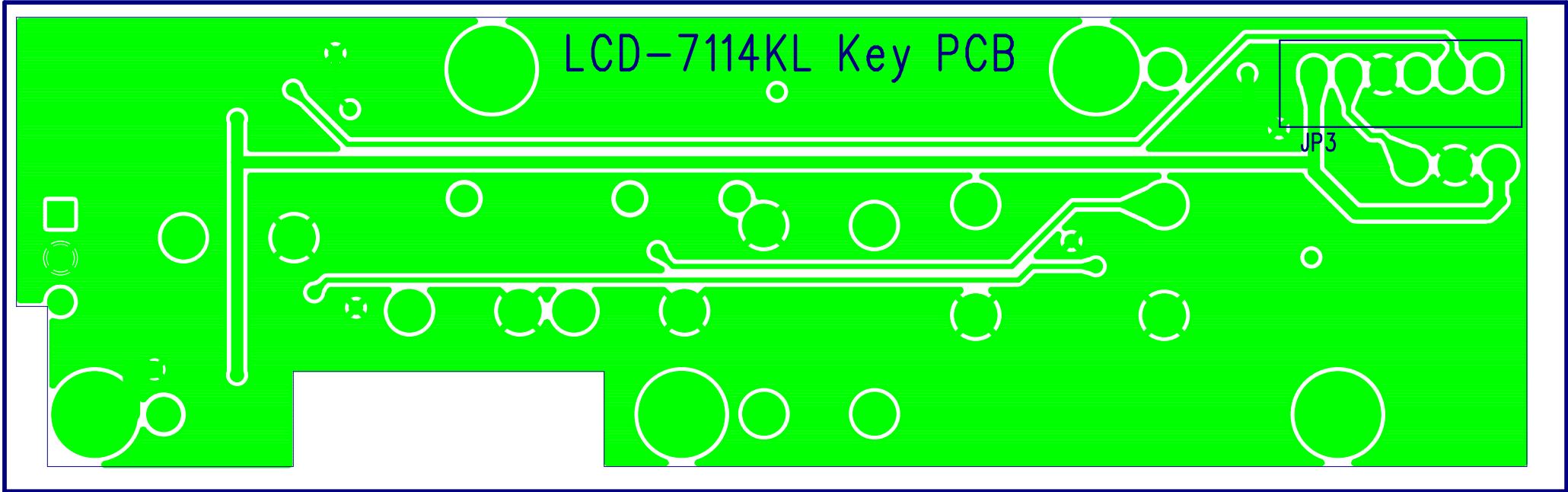
FPC-0.5S-32P

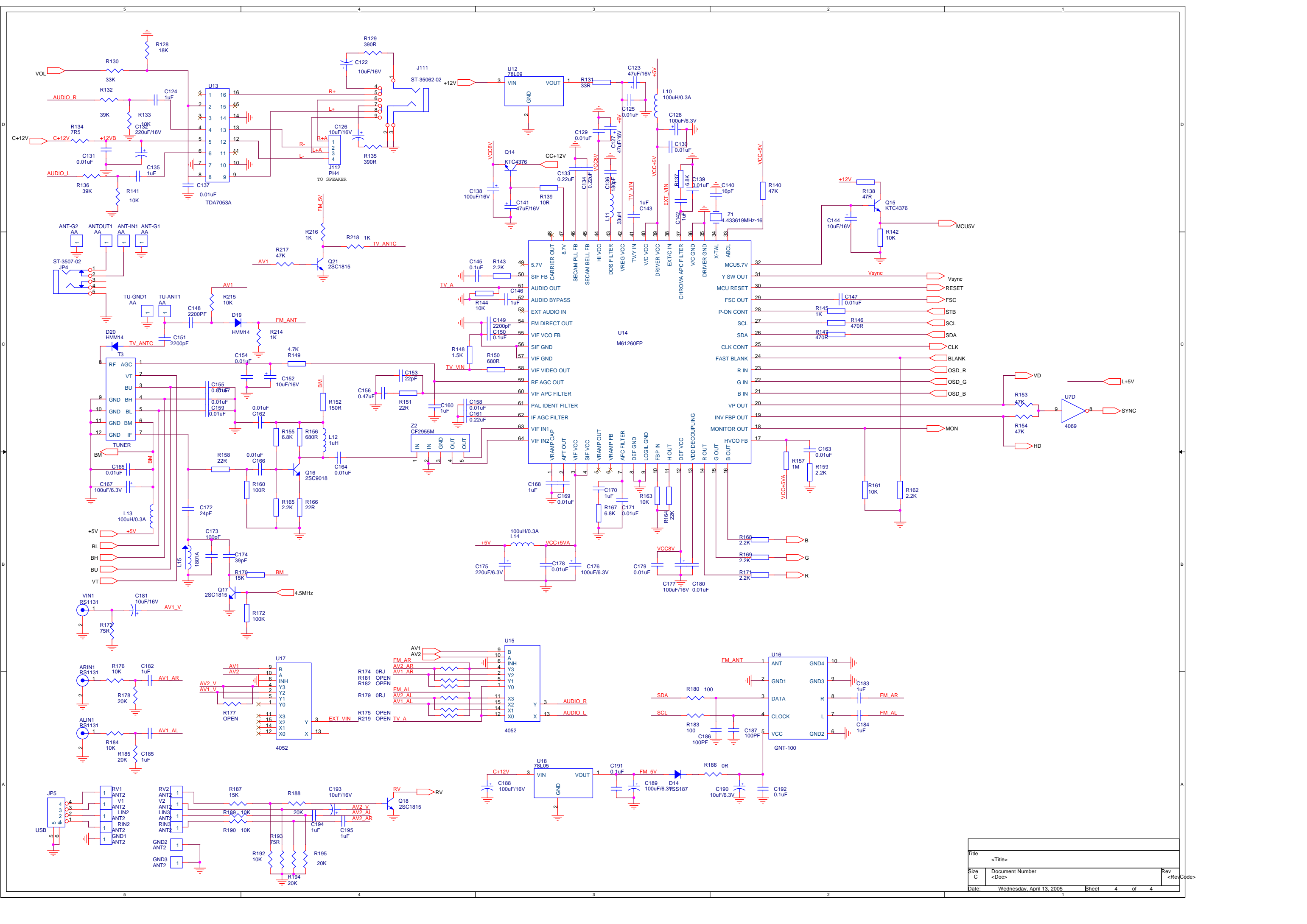


Title		
<Title>		
Size	Document Number	Rev
A4		
Date:	Sheet 3 of 4	

LCD-7114KL Key PCB

JP3





Title	<Title>		Rev	<RevCode>
Size	Document Number			
C	<Doc>			
Date:	Wednesday, April 13, 2005	Sheet	4	of 4

LCD-7114KL Key PCB

R117 R116 R115

R211 Q19 R212

U11

V-1

V+1

P+1

J11

J107

J106

R120

R118

R119

MENU1

TV/AV1

POWER1

R213

LED1

R196

Q20

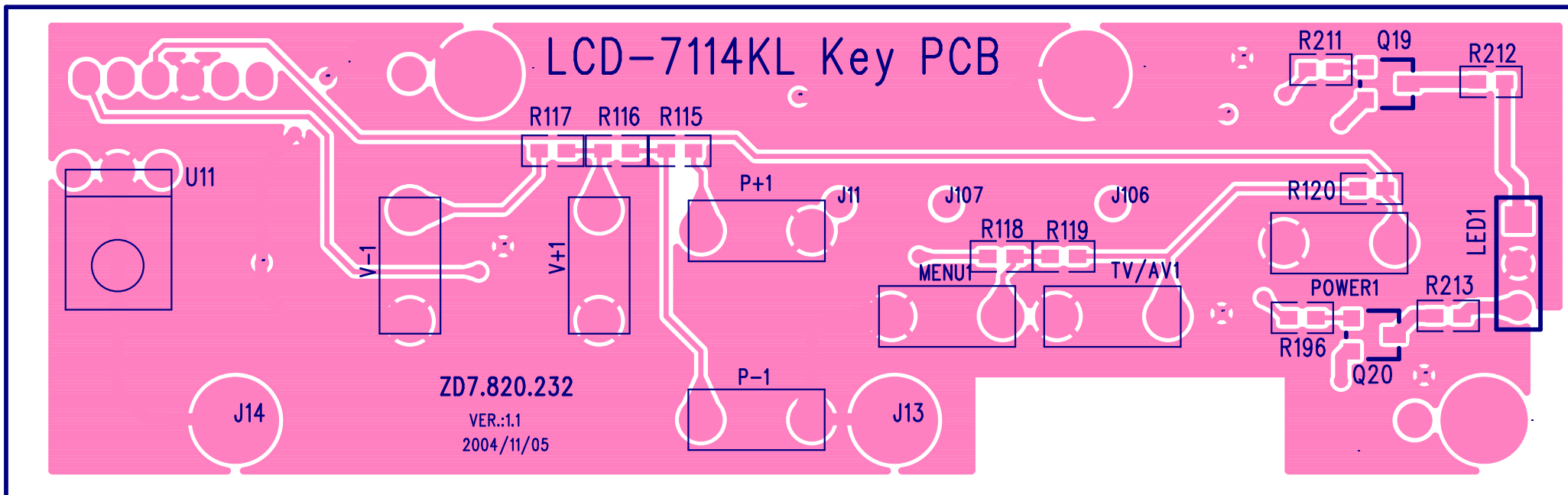
ZD7.820.232

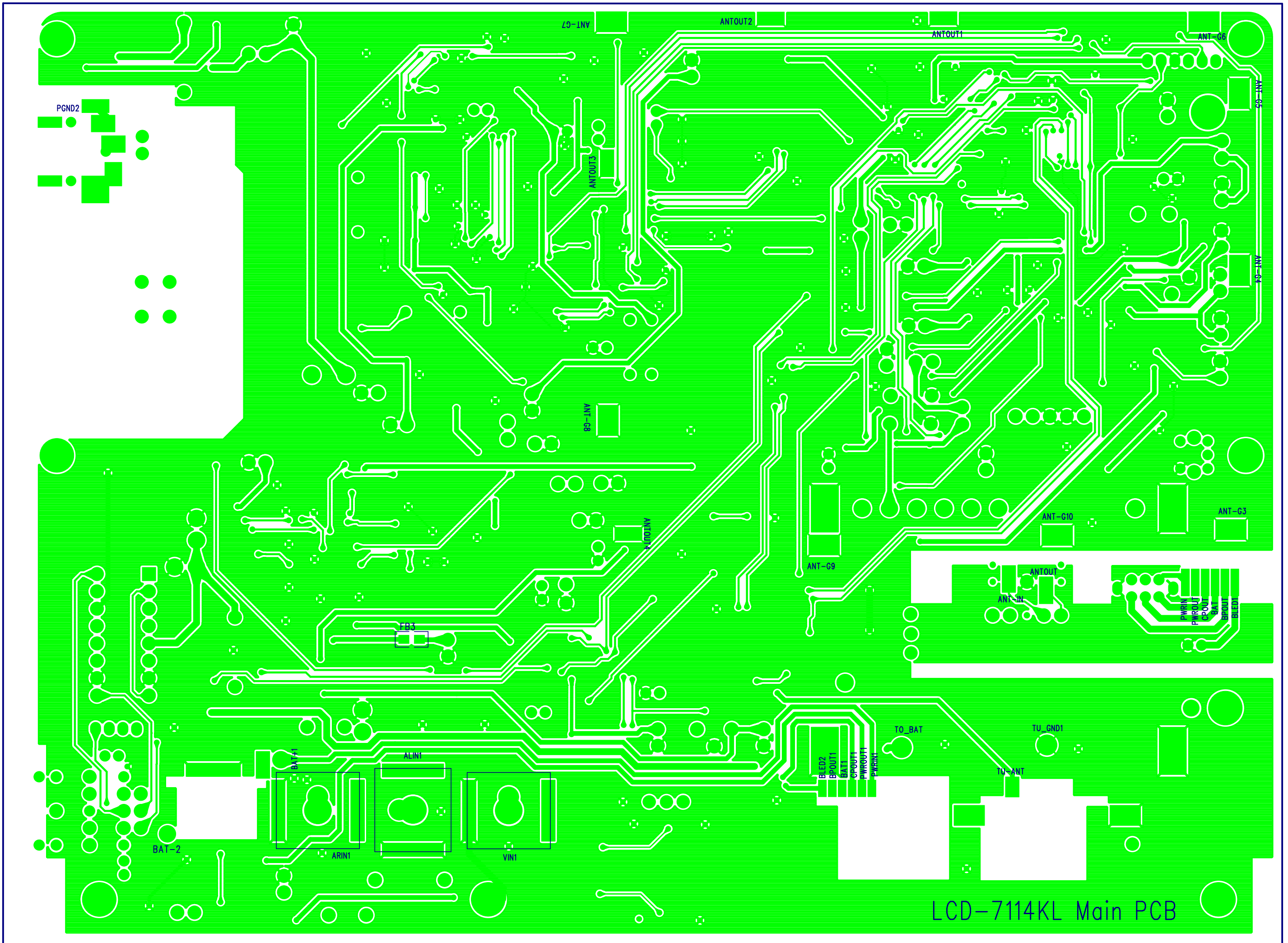
VER.:1.1
2004/11/05

P-1

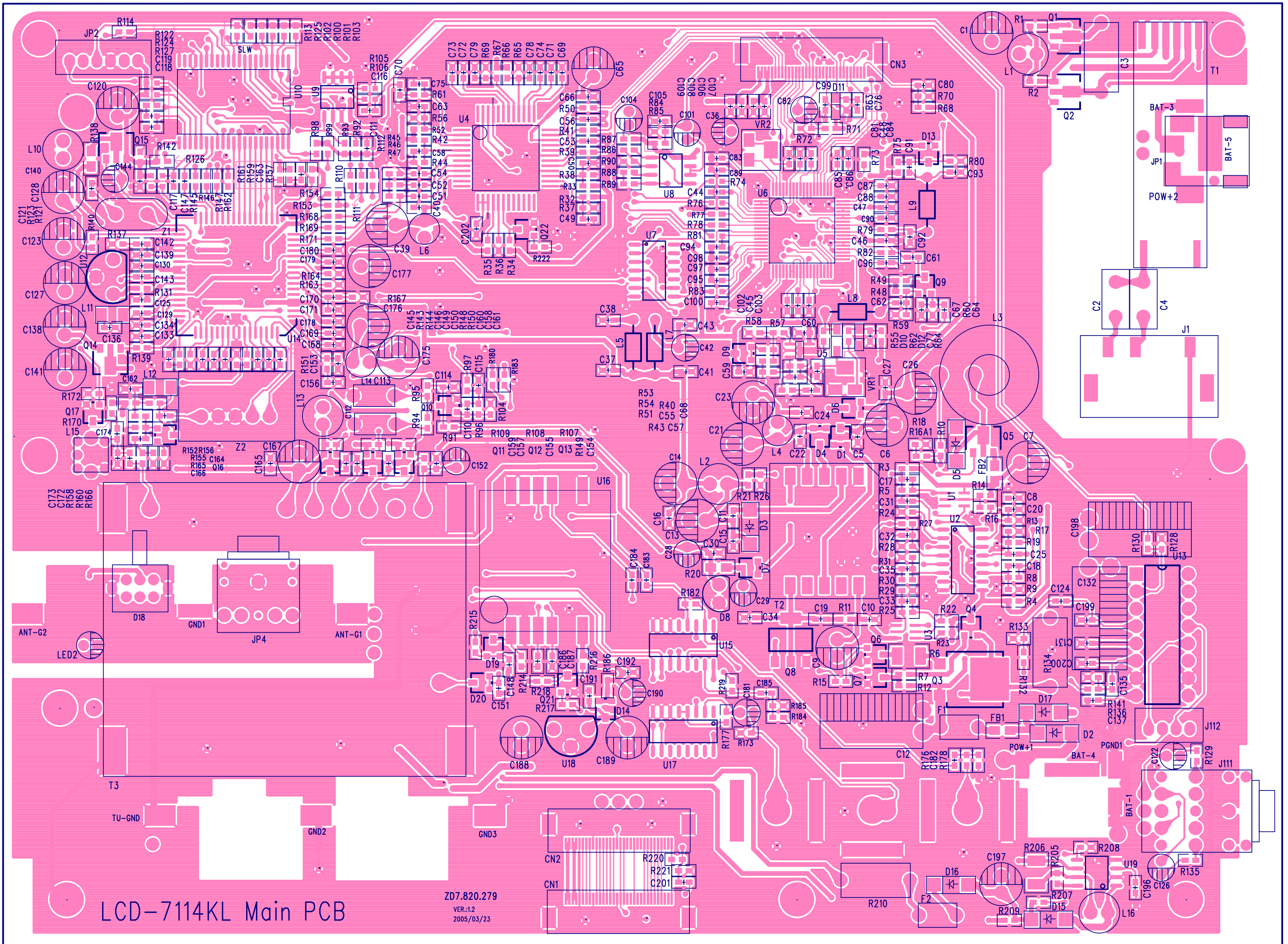
J13

J14





LCD-7114KL Main PCB



LCD-7114KL Main PCB

ZD7.820.279
VER.:1.2
2005/03/23

