

Service Manual

 **PIONEER**
The Art of Entertainment

ORDER NO.
ARP2443

STEREO DOUBLE CASSETTE DECK AMPLIFIER

DC-Z85_{SD, YPW}

DC-Z85 HAS THE FOLLOWING :

Type	Power Requirement	Remarks
SD	AC110V, 120 - 127V, 220V, 240V (Switchable)	
YPW	AC240V only	

● Refer to the service manual ARP2169 for DC-Z84/SD.

- This manual is applicable to DC-Z85/SD and YPW.
- These products are systems components.

Each of these products does not function properly when independent ; to avoid malfunctions, be sure to connect it to the prescribed system component (s), otherwise damage may result.

- For adjustment, refer to "ADJUSTMENTS FOR XD-Z54T, XD-Z84T, DC-Z94, DC-Z84 and DC-Z74" (ARP2140).

CONTENTS

1. CONTRAST OF MISCELLANEOUS PARTS	2
2. SCHEMATIC AND PCB CONNECTION DIAGRAMS	4

PIONEER ELECTRONIC CORPORATION 4-1, Meguro 1-Chome, Meguro-ku, Tokyo 153 Japan
PIONEER ELECTRONICS SERVICE INC. P.O. Box 1760, Long Beach, California 90801 U.S.A.
PIONEER ELECTRONICS OF CANADA, INC. 505 Cochrane Drive, Markham, Ontario L3P 8E3 Canada
PIONEER ELECTRONIC (EUROPE) N.V. Haven 1087 Keerbergaan 1, 9120 Meisele, Belgium
PIONEER ELECTRONICS AUSTRALIA PTY. LTD. 178-184 Boundary Road, Boroondra, Victoria 3195, Australia T.E.L.: (03) 580-9911
© PIONEER ELECTRONIC CORPORATION 1992

DFV FEB. 1992 Printed in Japan

1. CONTRAST OF MISCELLANEOUS PARTS

NOTES:

- Part without part number cannot be supplied.
- The Δ mark found on some component parts indicates the importance of the safety factor of the part. Therefore, when replacing, be sure to use parts of identical designation.
- Parts marked by * are not always kept in stock. Their delivery time may be longer than usual or they may be unavailable.

DC - Z85/SD, YPW and DC - Z84/SD have the same construction except for the following :

Mark	Symbol & Description	Part No.			Remarks
		DC - Z84/ SD type	DC - Z85/ SD type	DC - Z85/ YPW type	
⊕	AF assembly	AWZ3338	AWZ4106	AWZ4106	
⊕	SUB TRANS assembly	AWR1058	AWR1058	AWR1052	
⊕	2 MECHA assembly	Non supply	Non supply	Non supply	*1
⊕	2 MECHA unit (RP)	EXK2015	EXK2017	EXK2017	
Δ	S101 Line voltage selector switch (AC110-127/220-240V)	AKX1004	AKX1004	
Δ	S102 Line voltage selector switch (AC110/170-127/220/240V)	AKX-507	AKX-507	
Δ	T2001 Power transformer	ATS1319	ATS1401	ATS1419	
Δ	FU101 Fuse (T4A/250V)	AEK-400	AEK-514	
Δ	FU101 Fuse (T2A/250V)	AEK-511	
Δ	FU102 Fuse (T1.6A/250V)	AEK-405	AEK-510	AEK-510	
Δ	FU103 Fuse (T1.6A/250V)	AEK-405	AEK-510	
Δ	FU151, FU152 Fuse (T800mA/250V)	AEK-031	AEK-607	AEK-607	
Δ	AC Power cord	ADG1051	ADG1051	ADG1050	
Δ	AC Outlet 1P	AKP-617	
	Cursor button	AAD1900	AAD2216	AAD2216	
	Af button	AAD1901	AAD2217	AAD2217	
	Decorative plate B (DECK)	AAK2072	AAK2280	AAK2280	
	Af decorative plate	AAK2073	AAK2281	AAK2281	
	Cassette door (R)	AAK1250	AAK1319	AAK1319	
	Cassette door (L)	AAK1251	AAK1318	AAK1318	
	Front panel	AMB1743	AMB1958	AMB1959	
	Packing case	AHQ1966	AHQ2240	AHQ2240	
	Operating instructions (English)	ARB1281	ARB1354	ARB1354	
	Operating instructions (Spanish)	ARC1234	ARC1327	

*1 : 2 MECHA assemblies of DC - Z85/SD and YPW types are the same.

● 2 MECHA UNIT (EXK2017)

2 MECHA unit (EXK2017) and 2 MECHA unit (EXK2015) have the same construction except for the following :

Mark	Symbol & Description	Part No.		Remarks
		EXK 2015	EXK2017	
	R/P Head assembly	EXX1007	EXX1013	

● AF ASSEMBLY (AWZ4106)

AF assembly (AWZ4106) and AF assembly (AWZ3338) have the same construction except for the following :

Mark	Symbol & Description	Part No.		Remarks
		AWZ3338	AWZ4106	
	IC301	STK4182-2GP	STK4182-2GP	
	C151, C152 (3300/50)	ACH1017	
	C151, C152 (5600/50)	ACH1145	
	C1006	CXDYB152K50	CKCYB182K50	
	C1007, C1008	CXDYB562K50	CKCYB562K50	
	R416	RS2LMF331J	RS2LMF391J	

● SUB TRANS ASSEMBLY (AWR1062)

SUB TRANS assembly (AWR1062) and SUB TRANS assembly (AWR1058) have the same construction except for the following :

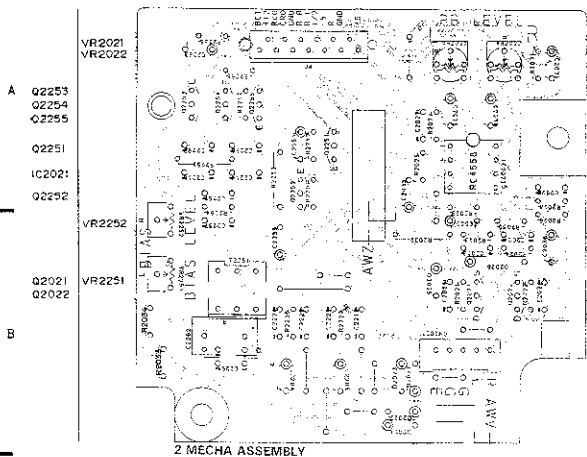
Mark	Symbol & Description	Part No.		Remarks
		AWR1058	AWR1062	
	T101	ATT1144	ATT1149	
△	AC Outlet 1P	AKP1078	

2 MECHA ASSEMBLY (DC-Z85/SD and YPW)

2 MECHA assembly (DC-Z85/SD and YPW) and 2 MECHA assembly (DC-Z84/SD) have the same construction except for the following :

Mark	Symbol & Description	Part No.		Remarks
		DC-Z84/SD	DC-Z85/SD, YPW	
	C2219, C2220	CCCSL271K500	CCCSL271K500	
	C2259, C2260	CCCSL101K500	
	R2033, R2034	RD1/BPM333J	

This P. C. B connection diagram is viewed from the parts mounted side.



NOTE

- The P.C.B. connection diagram is viewed from the parts mounted side.
- The parts which have been mounted on the board can be replaced with those shown, even the corresponding wiring symbols used in the following Table.

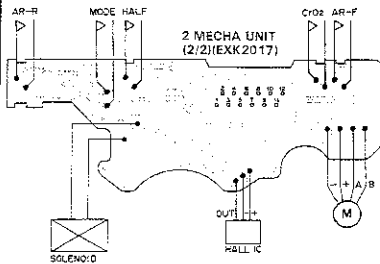
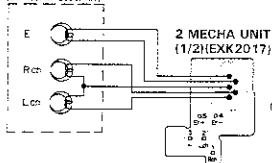
P.C.B. pattern diagram indication	Corresponding circuit symbol	Part Name
		Resistor
		Radiator type transistor
		Diode
		Resistor
		Capacitor (Polarized)
		Capacitor (Non-pole type)

Others

P.C.B. pattern diagram indication	Part Name
IC	IC
S	Switch
RY	Relay
L	Coil
F	Fuse
VR	Variable resistor or Semi-fixed resistor

- The capacitor terminal marked with shows negative terminal.
- The diode terminal marked with shows cathode side.
- The transistor terminal to which E or affixes shows the emitter.

R/P HEAD assembly



This P. C. B. connection diagram is viewed from the foil side.

A

B

C

D

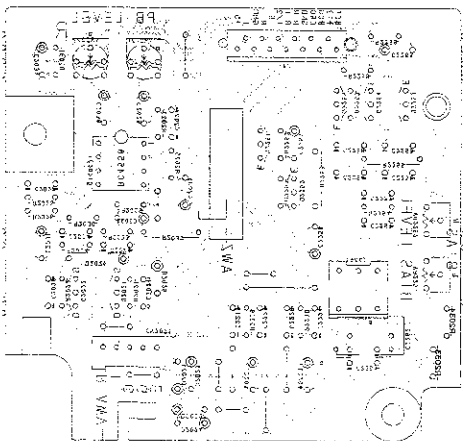
AVSS01

AVSS01
 05522
 05524
 05522
 05521
 1C5031
 05525

AVSS02

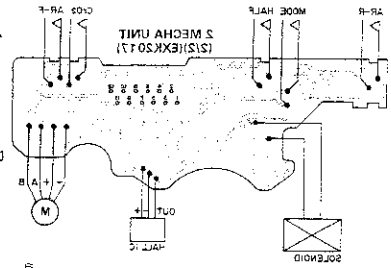
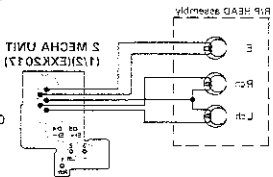
AVSS01

05051
 05055



S MECHA ASSEMBLY

RIP HEAD assembly



S

3

5

A

B

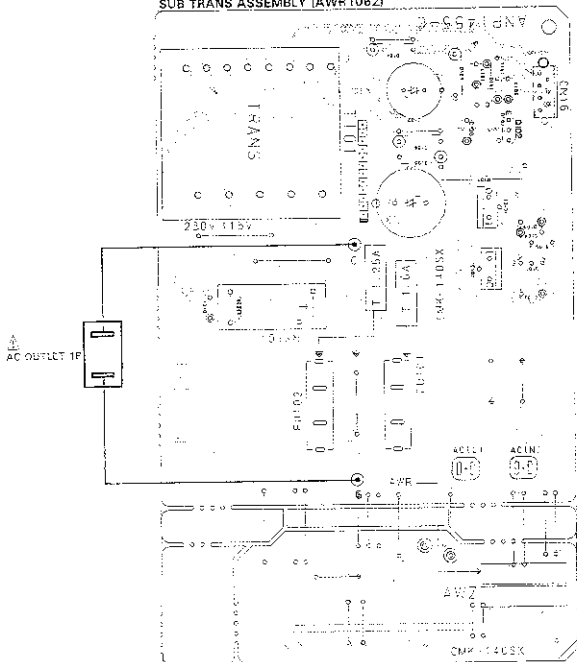
C

D

S

This P. C. B connection diagram is viewed from the parts mounted side.

SUB TRANS ASSEMBLY [AWR1062]



NOTE

1. This P.C.B. connection diagram is viewed from the parts mounted side.
2. The parts which have been enclosed on the PCBPC can be replaced with other ones with the corresponding marking symbols listed in the following Table.

P.C.B. pattern designation	Integrations	Corresponding part symbol	Part Name
SC			Transformer
Q215			Inductor type variable
Q203			Diode
Q237			Resistor
Q23			Capacitor (Polarized)
Q24			Capacitor (Non-polarized)

Others

P.C.B. pattern designation	Part Name
IC	IC
S	Switch
RY	Relay
S	Coil
F	Fuse
VR	Variable resistor or trim-pot resistor

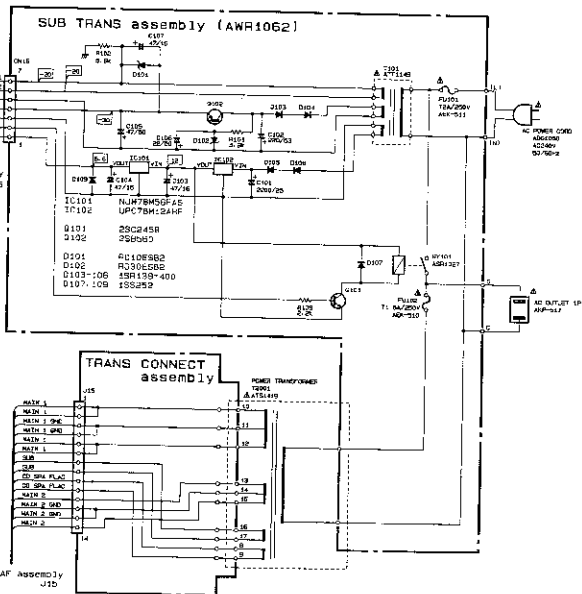
3. The capacitor (marked with) shows negative terminal.
4. The diode (marked with) indicates cathode of one cathode side.
5. The capacitor terminal (which E is affixed) shows the center.

A

B

C

D



B

D

1

2

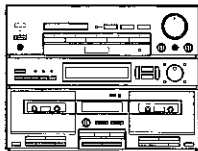
3



PIONEER
The Art of Entertainment

Service Manual

PIONEER
The Art of Entertainment



ORDER NO.
ARP2169

STEREO DOUBLE CASSETTE DECK AMPLIFIER

DC-Z84

DC-Z84 HAS THE FOLLOWING :

Type	Power Requirement	Remarks
SD	AC110V, 120V-127V, 220V, 240V (Switchable)	
YPW	AC240V only	

- This manual is applicable to the DC-Z84/SD and YPW types.
- As to the YPW type, refer to pages 51 - 54.
- This product is a component of a system. As to the system composition, refer to the system manual.
- For adjustment refer to ADJUSTMENTS FOR XD-Z54T, XD-Z84T, DC-Z94, DC-Z84 and DC-Z74 (ARP2140).

CONTENTS

1. EXPLODED VIEWS, PACKING AND PARTS LIST.....	2	3. P.C.B.'s PARTS LIST.....	45
2. SCHEMATIC DIAGRAM AND P.C. BOARDS CONNECTION DIAGRAM.....	12	4. FOR YPW TYPE.....	51
		5. PANEL FACILITIES.....	55
		7. SPECIFICATIONS.....	60

PIONEER ELECTRONIC CORPORATION 4-1, Meguro 1-Chome, Meguro-ku, Tokyo 153, Japan
PIONEER ELECTRONICS SERVICE INC. P.O. Box 1760, Long Beach, California 90801 U.S.A.
PIONEER ELECTRONICS OF CANADA, INC. 505 Cochrane Drive, Markham, Ontario L3R 6E3 Canada
PIONEER ELECTRONICS (EUROPE) N.V. Keetberglaan 1, 2740 Beveren, Belgium
PIONEER ELECTRONICS AUSTRALIA PTY. LTD. 178-184 Boundary Road, Braeside, Victoria 3195, Australia TEL: (03) 580-9911
 © PIONEER ELECTRONIC CORPORATION 1991

YV FEB. 1991 Printed in Japan

1. EXPLODED VIEWS, PACKING AND PARTS LIST

NOTES:

- Parts without part number cannot be supplied.
- The Δ mark found on some component parts indicates the importance of the safety factor of the part. Therefore, when replacing, be sure to use parts of identical designation.
- Parts marked by "*" are not always kept in stock. Their delivery time may be longer than usual or they may be unavailable.

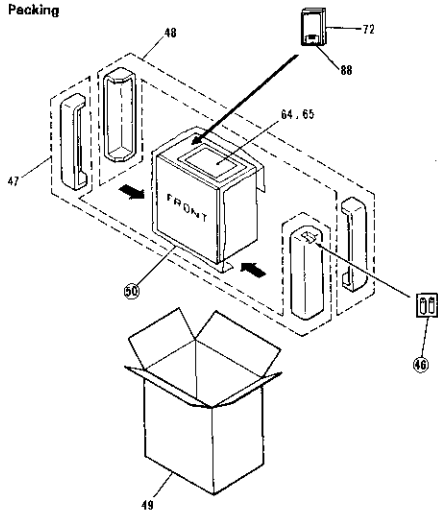
1.1 EXTERIOR AND PACKING

Parts list of Exterior and Packing

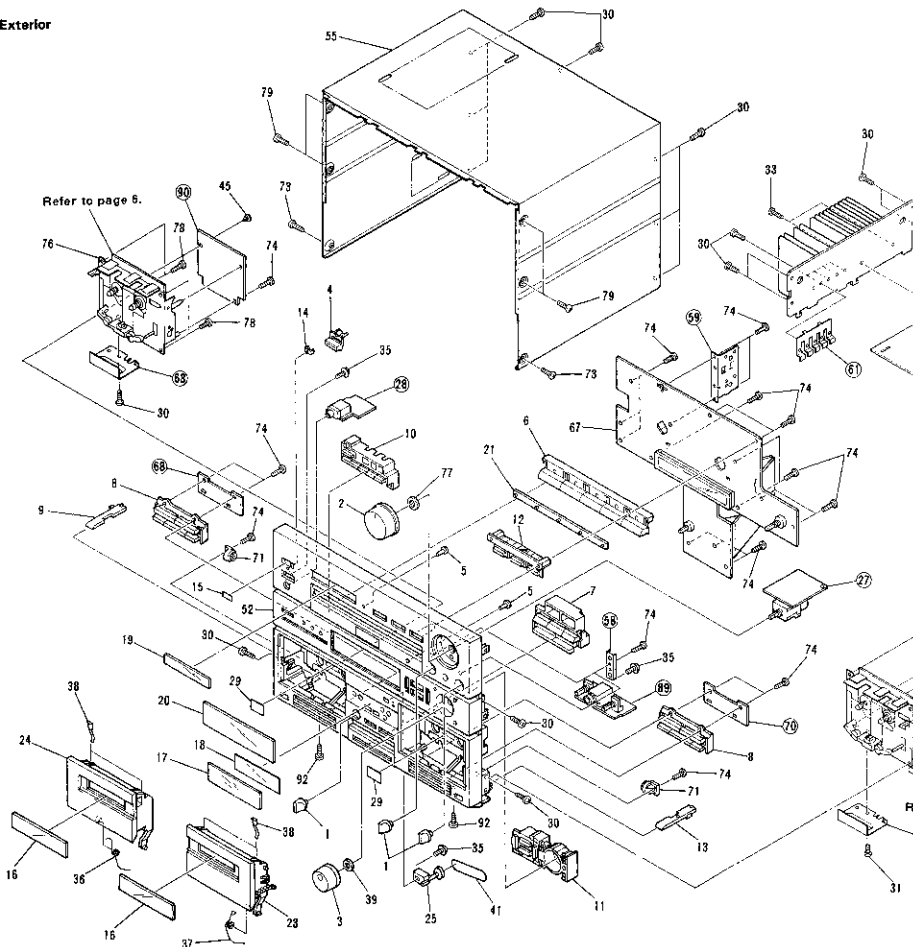
Mark	No.	Description	Parts No.	Mark	No.	Description	Parts No.
	1	ROTARY KNOB (BALANCE, MIC LEVEL, DOLBY NR)	AAB1136	41	COUNTER BELT	AER1161	
	2	VOL KNOB (VOLUME)	AAB1200	42	NYLON BINDER		
	3	ROTARY KNOB (SOUND JOG)	AA1202	43	LEG ASSEMBLY	AEC-947	
	4	POWER BUTTON	AA1674	44	STRAIN RELIEF	AEC-882	
	5	KIN BUTTON (MEMORY, LOUDNESS)	AA1682	45	NYLON RIVET	AEC1160	
	6	FUNCTION BUTTON	AA1894	46	DRY CELL BATTERY (R03, AAA)		
	7	REC. COPY BUTTON	AA1895	47	FRONT PAD L, R	AHA1404	
	8	DECK PLAY BUTTON	AA1896	48	REAR PAD L, R	AHA1405	
	9	EJECT BUTTON L	AA1898	49	PACKING CASE	AHD1966	
	10	GEQ BUTTON	AA1899	50	SHEET		
	11	CURSOR BUTTON	AA1900	51	TERMINAL SCREW		
	12	AI BUTTON	AA1901	52	FRONT PANEL	AMB1743	
	13	EJECT BUTTON R	AA1922	53	CHASSIS		
	14	LENS (POWER IND.)	AAK1800	54	REAR PANEL		
	15	FILTER (REMOTE SENSOR)	AAK1812	55	BONNET	ANE1298	
	16	DECORATIVE PLATE (DOOR)	AAK2065	56	PACK HOLDER		
	17	DECORATIVE PLATE A	AAK2071	57	HEAT SINK HOLDER B		
	18	DECORATIVE PLATE B	AAK2072	58	PRESSURE METAL		
	19	AI DECORATIVE PLATE	AAK2073	59	HEAT SINK HOLDER A		
	20	DECORATIVE PLATE (GEQ)	AAK2074	60	PCB HOLDER		
	21	INDICATOR LENS	AAK2075	61	HOLDER		
⊙	22	AF ASSEMBLY	AWZ3338	62	HEAT SINK		
	23	CASSETTE DOOR R	AA1250	63	SHIELD PLATE (MECHA)		
	24	CASSETTE DOOR L	AA1251	64	OPERATING INSTRUCTIONS (ENGLISH)	ARB1281	
	25	COUNTER	AAW1069	65	OPERATING INSTRUCTIONS (SPANISH)	ARC1234	
⊙	26	GEQ ASSEMBLY	AWX1048	66	TRANS CONNECT ASSEMBLY		
	27	VR ASSEMBLY		⊙ 67	DISPLAY ASSEMBLY	AWZ3351	
	28	HEAD PHONE ASSEMBLY		68	1 MECHA SW ASSEMBLY		
	29	FANEL (PAPER)	AA1301	⊙ 69	SUB TRANS ASSY	AWR1958	
	30	SCREW	ABA-298	70	2 MECHA SW ASSEMBLY		
	31	SCREW (STEEL)	ABA1009	71	DAMPER ASSEMBLY	AXA1008	
	32	SCREW (STEEL)	ABA1011	72	REMOTE CONTROL UNIT (CU-DC022)	AXD1183	
	33	SCREW	ABA1018	73	SCREW	BBZ30P080FZK	
	34	SCREW	ABA1082	74	SCREW	BPZ26P080FMC	
	35	SCREW (STEEL)	ABA1095	75	2 MECHA UNIT	EKK2010	
	36	DOOR SPRING L	ABH1068	76	1 MECHA UNIT	EKK2020	
	37	DOOR SPRING R	ABH1069	77	NUT	NK90FUC	
	38	KEEP PLATE	ABK1016	78	SCREW	VPZ30P080FMC	
	39	NUT	ABN1016				
Δ	40	AC POWER CORD	ADC1051				

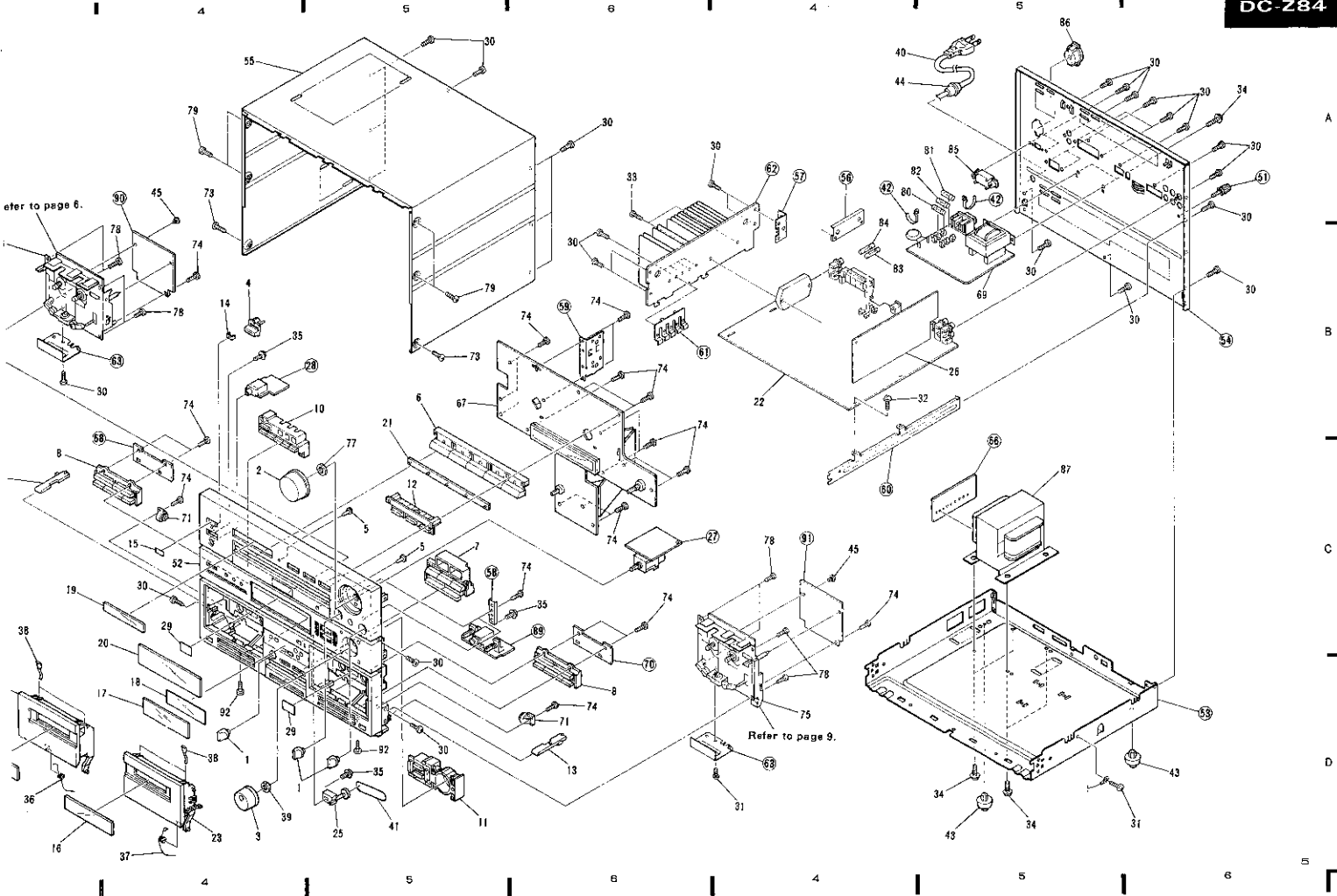
Mark	No.	Description	Parts No.
	79	SCREW	VPZ30P080FZK
△	80	FUSE (T4A, FU101)	AEK-400
A	81	FUSE (T1.6A, FU102)	AEK-405
△	82	FUSE (T1.6A, FU103)	AEK-405
△	83	FUSE (T800mA, FU151)	AEK-031
△	84	FUSE (T800mA, FU152)	AEK-031
△	85	VOLTAGE SELECTOR (S101)	AKX1004
△	86	VOLTAGE SELECTOR (S102)	AKX-507
△	87	POWER TRANSFORMER (T2001)	ATS1319
	88	BATTERY COVER	AZN1846
	89	MIC BALANCE ASSEMBLY	
	90	1 MECHA ASSEMBLY	
	91	2 MECHA ASSEMBLY	
	92	SCREW	BRZ30P060FZK

Packing



Exterior





Refer to page 6.

Refer to page 9.

Refer to page 10.

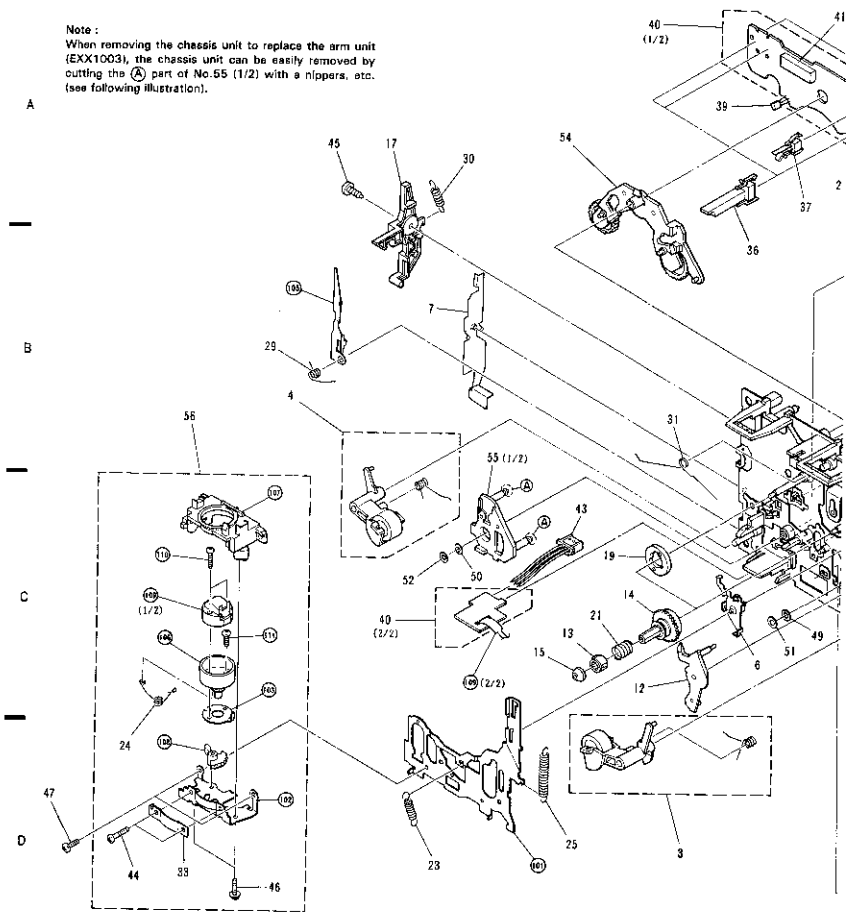
A
B
C
D
5

1.2 1 MECHA UNIT (EXK2020)

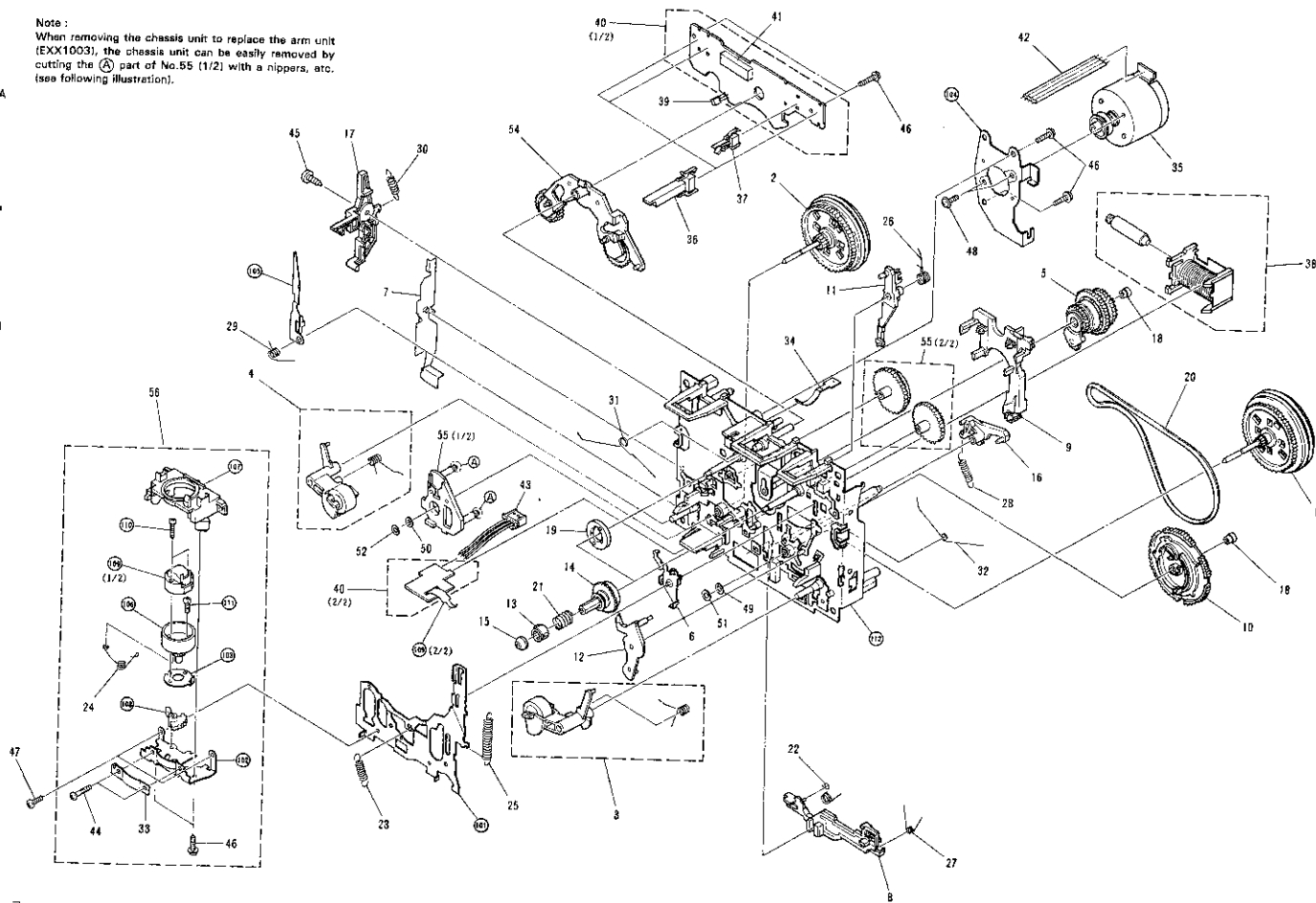
Parts list of 1 Mecha unit

Mark	No.	Description	Parts No.	Mark	No.	Description	Parts No.
1		FLYWHEEL UNIT (FWD)	EXA1102	51	WASHER	EBF1010	
2		FLYWHEEL UNIT (RVS)	EXA1103	52	WASHER	EBF1011	
3		ROLLER UNIT (FWD)	EXA1104	53	
4		ROLLER UNIT (RVS)	EXA1105	54	ARM UNIT	EXX1002	
5		LIMPER UNIT	EXA1106	55	ARM UNIT	EXX1003	
6		LEVER UNIT	EXA1107	56	P HEAD ASSEMBLY	EXX1005	
7		ARM	AZN2963				
8		NR LEVER	ENV1155				
9		BRAKE	ENV1157				
10		CAM GEAR	ENV1158				
11		LOCK ARM	ENV1159	101	HEAD BASE		
12		NR ARM	ENV1163	102	BRACKET		
13		REEL COLLAR	ENV1164	103	PLATE		
14		REEL	ENV1190	104	BRACKET		
15		REEL BUSH	ENV1178	105	ARM		
16		ARM	ENV1181	106	HOLDER		
17		ARM	AZN2969	107	HOLDER		
18		BUSH	ENV1184	108	GEAR		
19		MAGNET	ENV1185	109	P HEAD UNIT		
20		BELT	ENT1015	110	SCREW		
21		SPRING	EBH1201	111	SCREW		
22		SPRING	EBH1202	112	CHASSIS UNIT		
23		SPRING	EBH1203				
24		SPRING	EBH1204				
25		SPRING	EBH1208				
26		SPRING	EBH1209				
27		SPRING	EBH1210				
28		SPRING	EBH1211				
29		SPRING	EBH1255				
30		SPRING	EBH1213				
31		SPRING	EBH1220				
32		SPRING	EBH1255				
33		SPRING	EEL1013				
34		SPRING	EEL1014				
35		MOTOR UNIT	EXA1108				
36		SWITCH (Detect)	ESN1069				
37		SWITCH (Mode)	ESN1064				
38		SOLENOID	EXP1005				
39		HALL IC	DN6847SE				
40		P.C.BOARD	ENX1002				
41		CONNECTOR	EKS1013				
42		LEAD WIRE	EED1003				
43		CONNECTOR	EDR1009				
44		SCREW	EBA1020				
45		SCREW	EBA1021				
46		SCREW (M2×8)	ATZ20P060FMC				
47		SCREW	BSZ20P030FMC				
48		SCREW	PMS26P025FCU				
49		WASHER	EBF1008				
50		WASHER	EBF1009				

Note:
When removing the chassis unit to replace the arm unit (EXX1003), the chassis unit can be easily removed by cutting the (A) part of No.55 (1/2) with a nippers, etc. (see following illustration).



Note:
 When removing the chassis unit to replace the arm unit (EXX1003), the chassis unit can be easily removed by cutting the (A) part of No.55 (1/2) with a nippers, etc. (see following illustration).



Note:
When removing the chassis unit to replace the arm unit (EXX1003), the chassis unit can be easily removed by cutting the $\text{\textcircled{A}}$ part of No.55 (1/2) with a nippers, etc. (see following illustration).

A

B

C

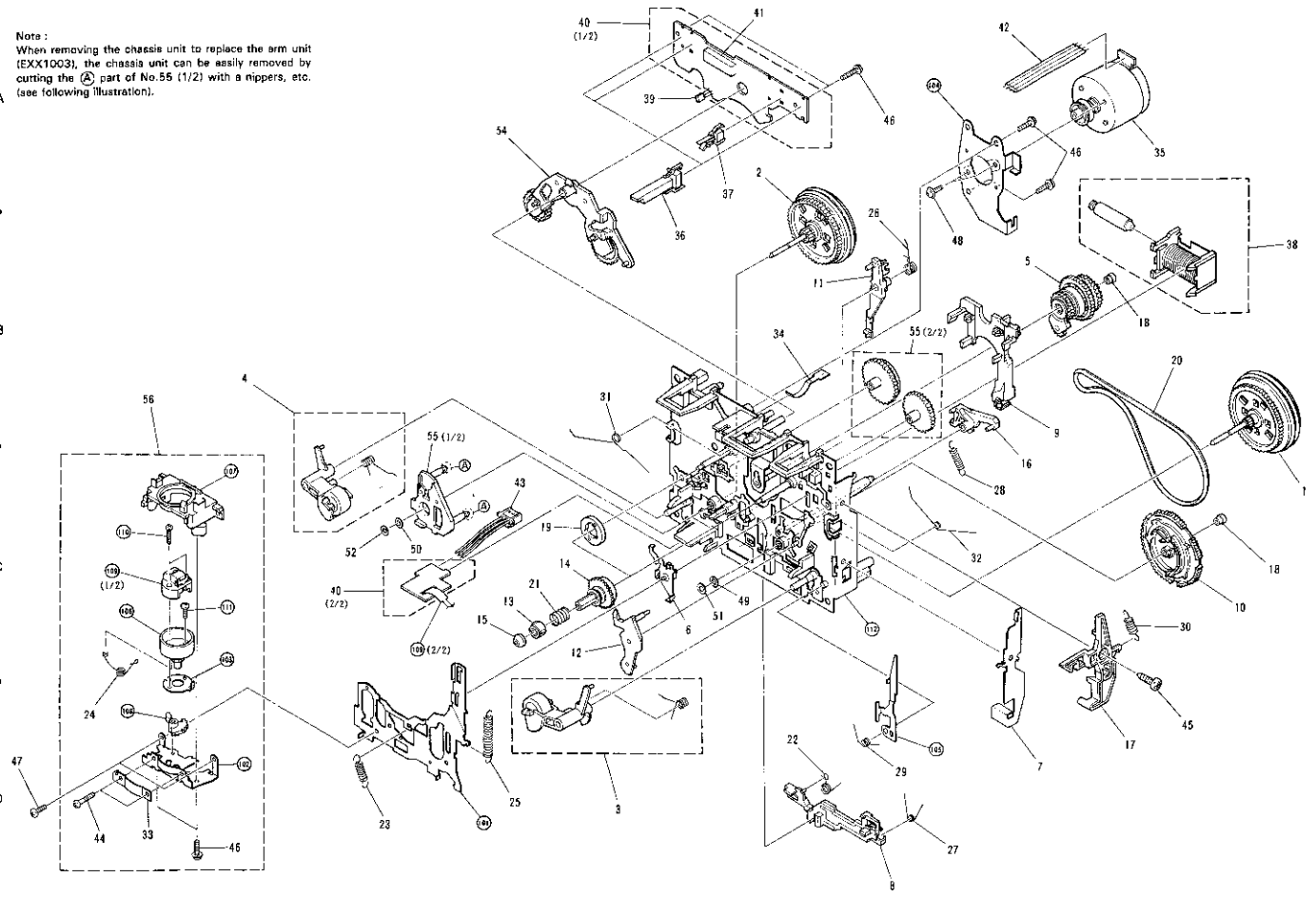
D

A

B

C

D

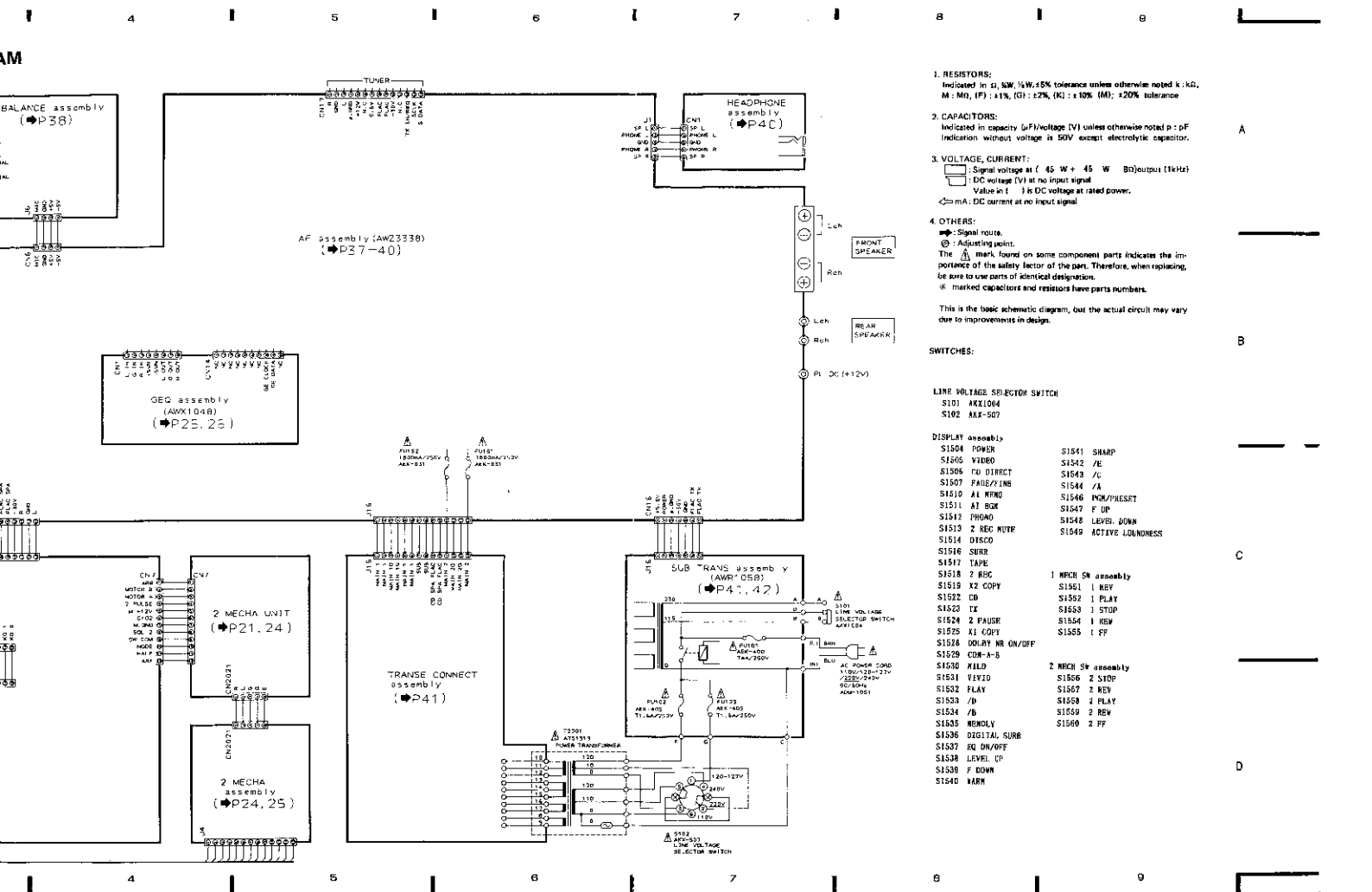


No.

- 1010
- 1011
- 1002
- 1003
- 1004

B

11



1. RESISTORS:
 Indicated in Ω, kW, ½W, 5% tolerance unless otherwise noted & kΩ, MΩ, MF; ±1%, (G) ±2%, (K) ±10% (M); ±20% tolerance

2. CAPACITORS:
 Indicated in capacity (μF/voltage (V) unless otherwise noted p: pF indication without voltage is 50V except electrolytic capacitor.

3. VOLTAGE, CURRENT:
 ⊕: Signal voltage at (45 W + 45 W B) output (1kHz)
 ⊖: DC voltage (V) at no input signal
 Value in () is DC voltage at rated power.
 ⊖ mA: DC current at no input signal

4. OTHERS:
 ⊕: Signal route.
 ⊖: Adjusting point.
 The Δ mark found on some component parts indicates the importance of the safety factor of the part. Therefore, when replacing, be sure to use parts of identical designation.
 * marked capacitors and resistors have parts numbers.

This is the basic schematic diagram, but the actual circuit may vary due to improvements in design.

SWITCHES:

LINE VOLTAGE SELECTOR SWITCH

- S101 AKX1004
- S102 AKX-507

DISPLAY assembly

- S1504 POWER
- S1505 VIDEO
- S1506 TUN DIRECT
- S1507 FAULT/ENG
- S1510 AL MFG
- S1511 AL BGR
- S1512 PHONO
- S1513 2 REC NTRF
- S1514 DISCO
- S1516 SERE
- S1517 TAPE
- S1518 2 REC
- S1519 X2 COPY
- S1522 CD
- S1529 TX
- S1524 2 FAUSE
- S1525 X1 COPY
- S1528 DOLBY NR ON/DPF
- S1529 CDW-A-B
- S1530 FIELD
- S1531 VEED
- S1532 FLAY
- S1533 /B
- S1534 /B
- S1535 MEMOY
- S1536 DIGITAL SURR
- S1537 EQ DN/DFE
- S1538 LEVEL UP
- S1539 F DOWN
- S1540 MARN
- S1541 SHARP
- S1542 /E
- S1543 /C
- S1544 /A
- S1546 PGM/PRESET
- S1547 F UP
- S1548 LEVEL DOWN
- S1549 ACTIVE LADNESS

1 MCH SW assembly

- S1561 1 REV
- S1562 1 PLAY
- S1563 1 STOP
- S1564 1 REV
- S1565 1 FF

2 MCH SW assembly

- S1566 2 STOP
- S1567 2 REV
- S1568 2 PLAY
- S1569 2 REV
- S1569 2 FF

Q1502 - Q1507

Q1509 Q1508

IC1504

IC1652

IC1651

IC1501

IC1505

Q1501

Q1510

IC1509

Q1601 - Q1605

Q1606 - Q1611

2.2 DISPLAY (AWZ3409), 1 MECHA SW, 2 MECHA SW assembly, 1 MECHA UNIT (EXK2020) and 2 MECHA UNIT (EXK2010)

A

- NOTE
- The PCB is named to diagram is viewed from the parts mounted side.
 - The parts which have been reserved on the board are to be replaced with those shown with the corresponding wiring symbols listed in the following table.

PCB letter diagram indication	Corresponding part symbol	Part Name
EO		Resistor
0.15		Resistor type Precision
0205		Capacitor
0227		Capacitor Polymer
0253		Capacitor (Polarity)
0258		Capacitor (Polarity)

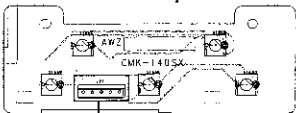
B

PCB letter diagram indication	Part Name
IC	IC
S	Switch
RFW	RFW
L	Coil
F	Fiber
VR	Variable resistor or Semi-conductor variable

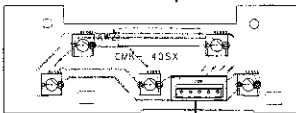
- The capacitor terminal marked with (C) indicates that the negative terminal.
- The resistor is marked with (R) indicates that the correct value is outside the table.
- The capacitor terminal to which (+) is attached shows the polarity.

To AF assembly CN10
(To page 35)

2 MECHA SW assembly

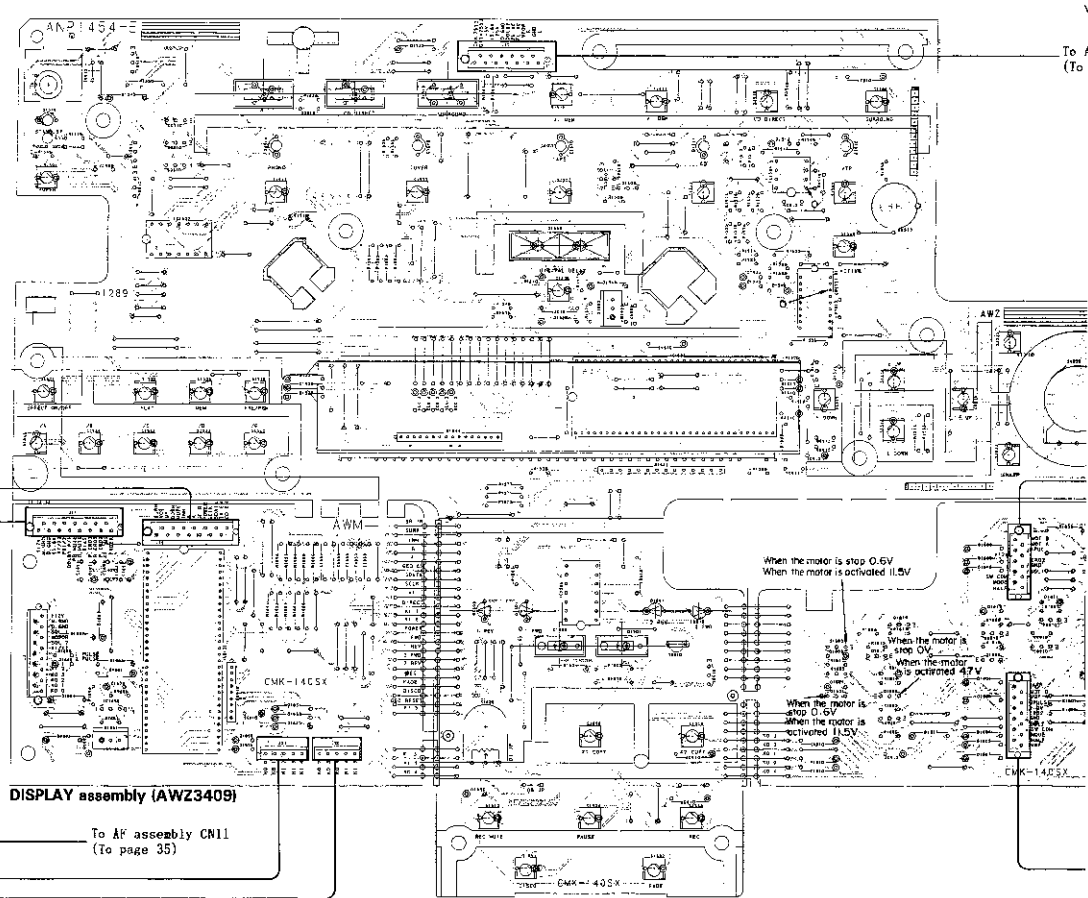


1 MECHA SW assembly



DISPLAY assembly (AWZ3409)

To AF assembly CN11
(To page 35)



When the motor is stop 0.5V
When the motor is activated 11.5V

When the motor is stop 0V
When the motor is activated 47V

When the motor is stop 0.5V
When the motor is activated 11.5V

1B

1

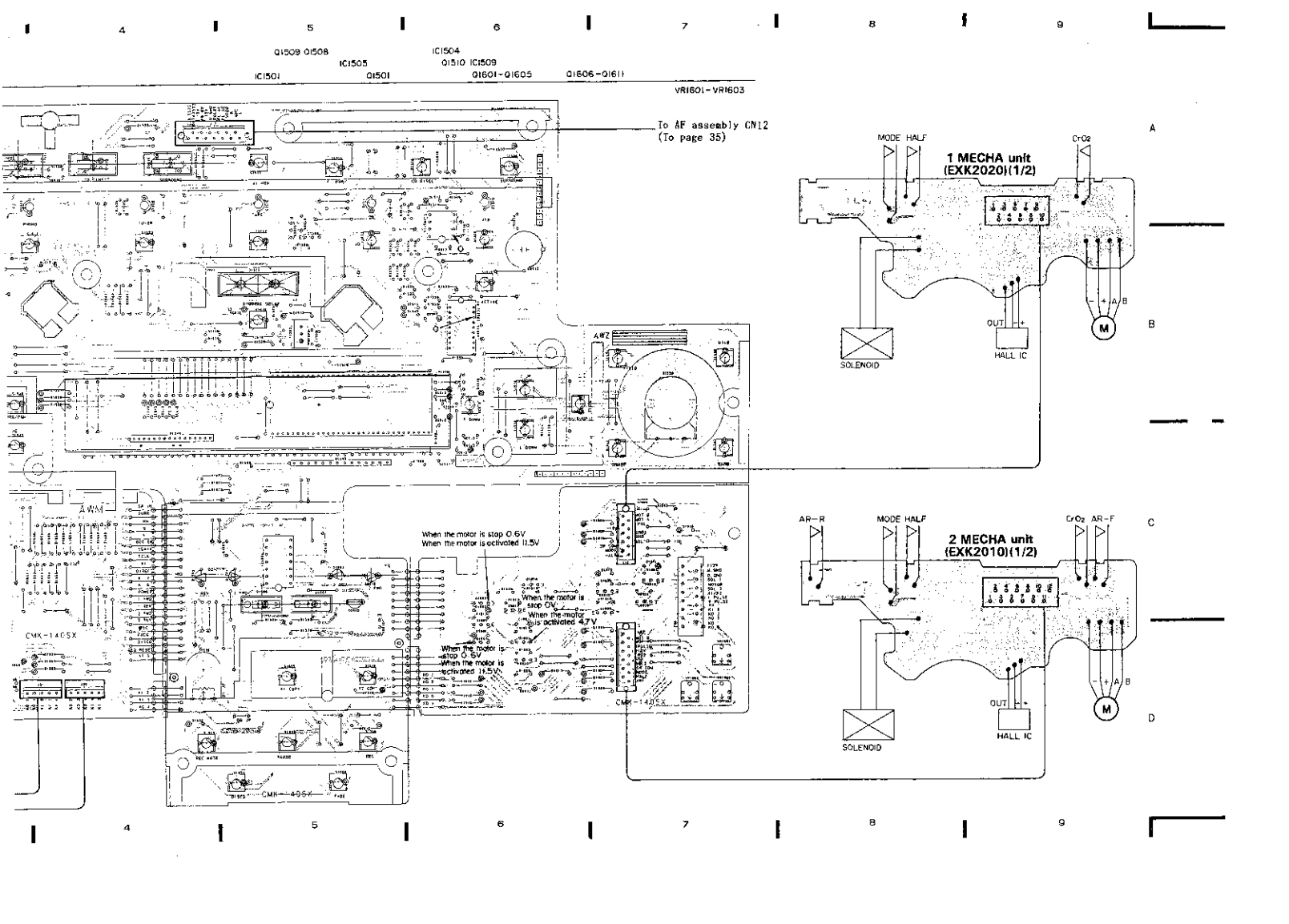
2

3

4

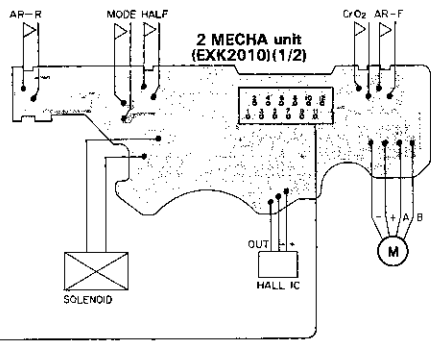
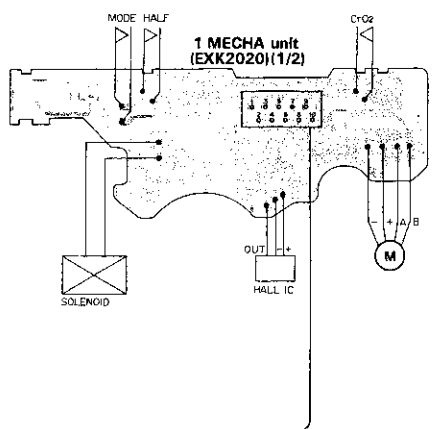
5

6



Q1509 Q1508 IC1505 IC1501 IC1504 Q1510 IC1509 Q1601-Q1605 Q1606-Q1611 VR1601-VR1603

To AF assembly CN12
(To page 35)



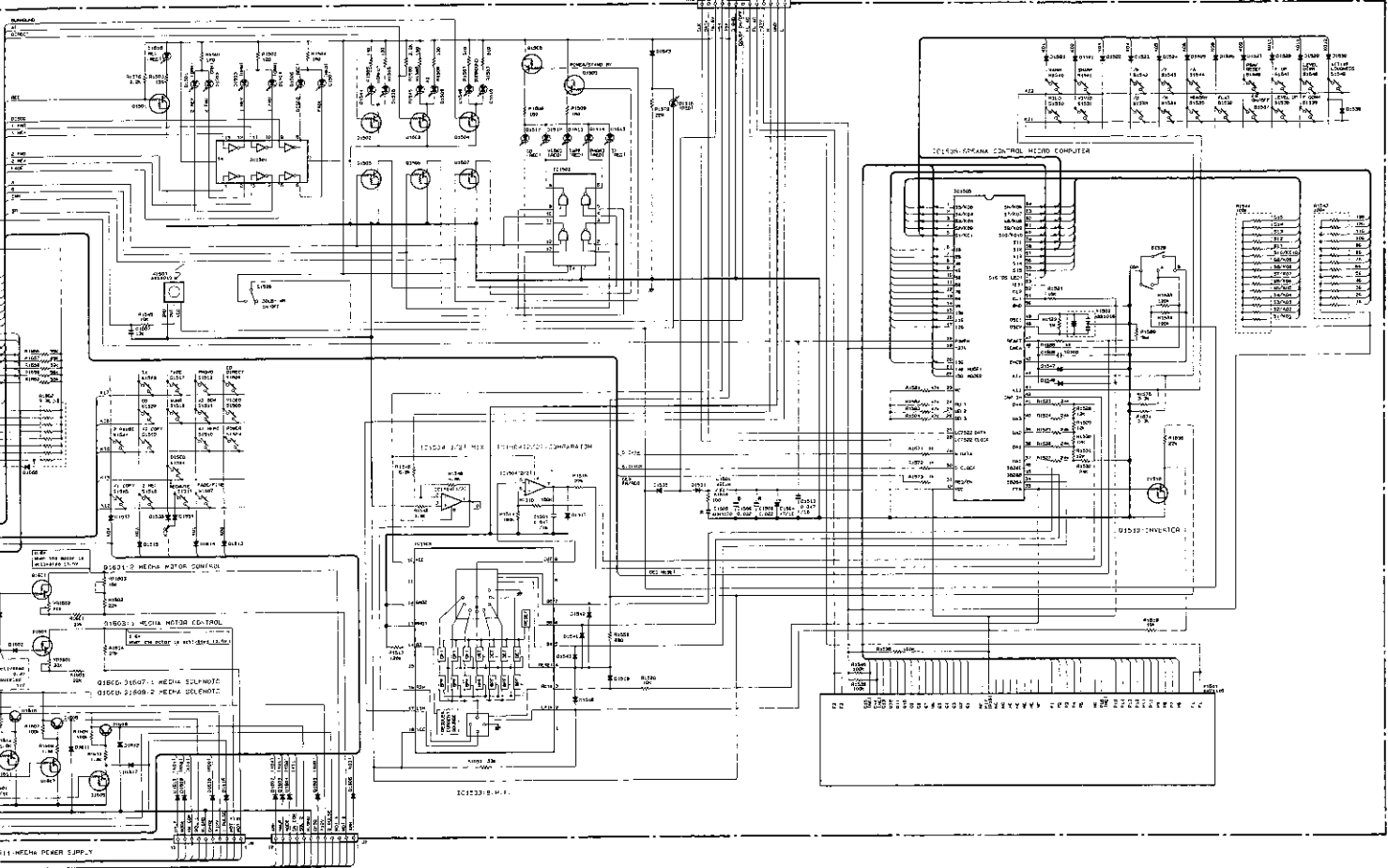
When the motor is stop 0.6V
When the motor is activated 11.5V

When the motor is stop 0V
When the motor is activated 4.7V

When the motor is stop 0.6V
When the motor is activated 11.5V

4 5 6 7 8 9

To be assembled only
(To page 39)



A

B

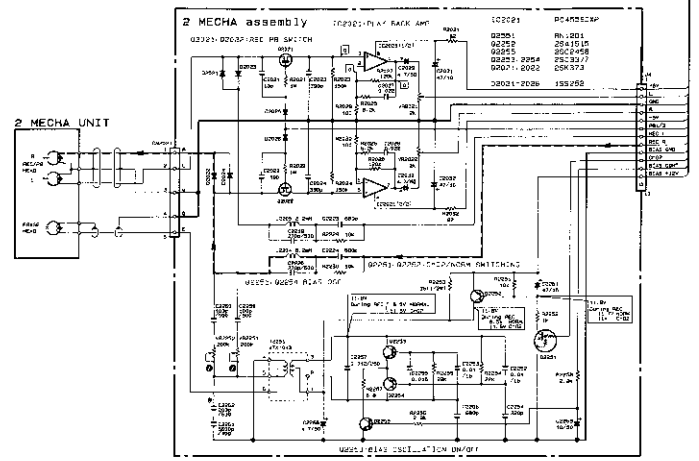
C

D

2.3 GEQ (AWX1048), 1 MECHA and 2 MECHA assembly

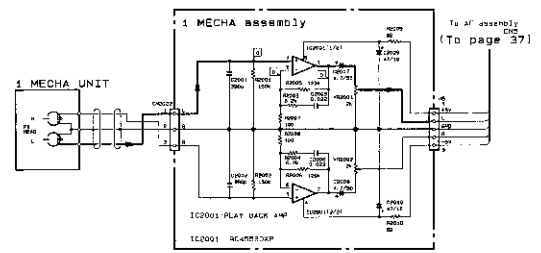
A

To AF assembly
C44
(To page 37)



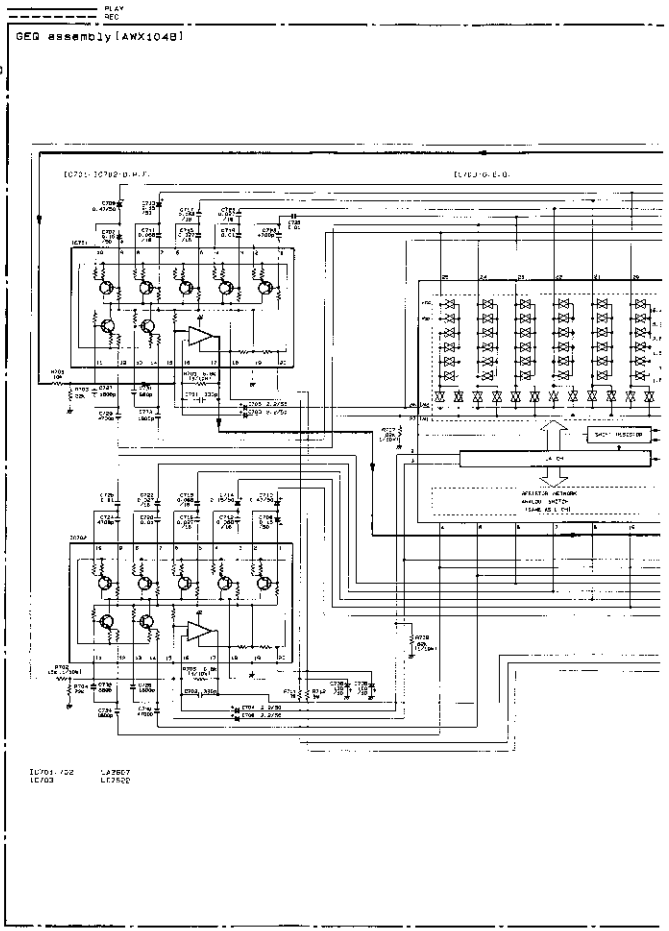
B

C

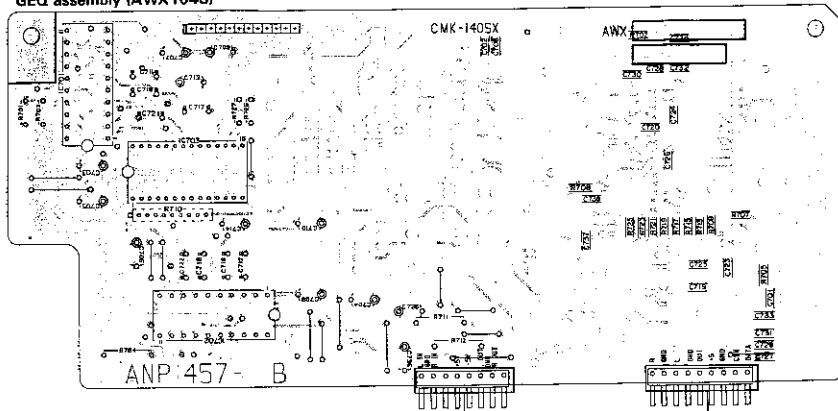


To AF assembly
C44
(To page 37)

D



GEO assembly (AWX1048)



NOTE

1. The P.C.B. connection diagram is based on the parts mounted on it.
2. The parts which have been mounted on the board can be replaced with those shown with the corresponding service protection level in the following table.

P.C.B. pattern diagram indication	Component symbol number	Part Name
		Transformer
		Relay (or relay transformer)
		Diode
		Resistor
		Capacitor (Electrolytic)
		Capacitor (Nonpolar type)

Other:

P.C.B. pattern diagram indication	Part Name
	IC
	Switch
	Relay
	Coil
	Fiber
	Variable inductor (or potentiometer)

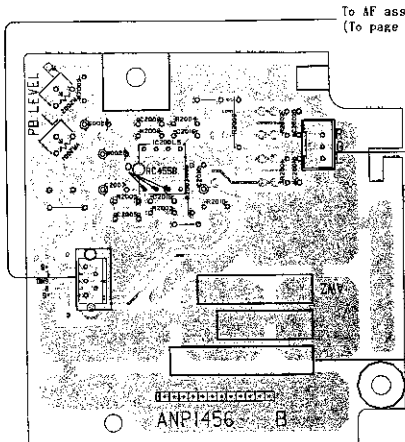
3. The capacitor in this diagram with shows negative terminal.
4. The diode terminal marked with shows cathode side.
5. The triangle terminal symbol shows the error.

To AF assembly
(To page 35)

To AF assembly
(To page 35)

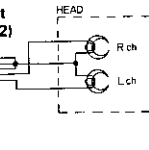
To AF assembly CN4
(To page 35)

To AF assembly CN5
(To page 35)

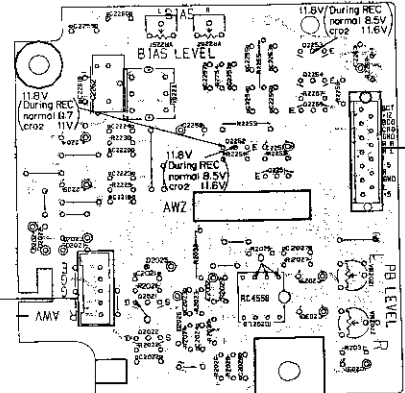
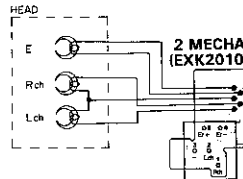


1 MECHA assembly

1 MECHA unit (EXK2020) (2/2)



2 MECHA unit (EXK2010) (2/2)



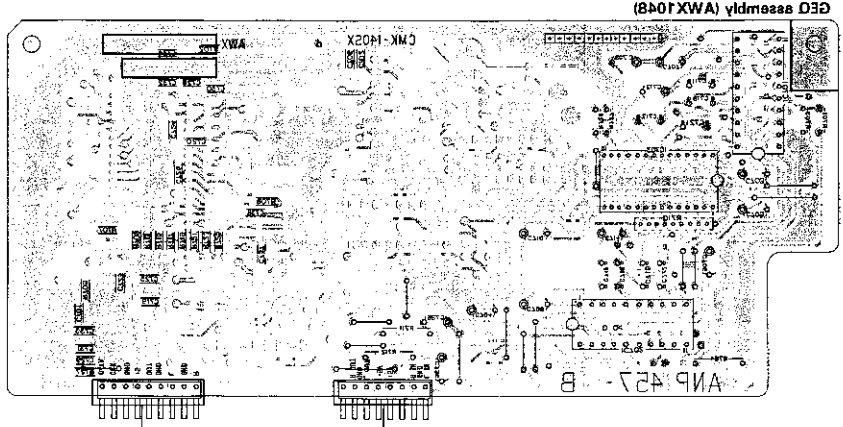
2 MECHA assembly

A

B

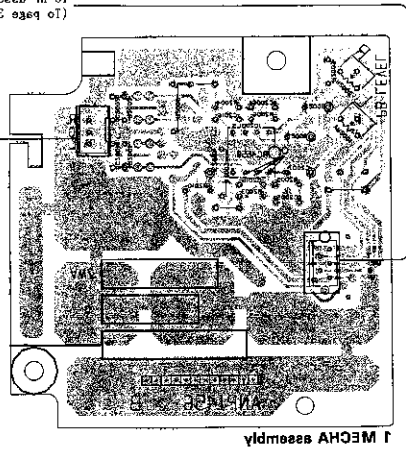
C

D



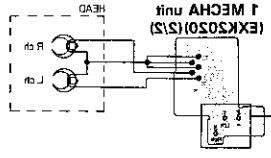
GE0 assembly (WX1048)

To RF assembly CW2
(To page 32)



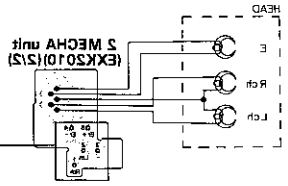
1 MECH assembly

To RF assembly
(To page 32)



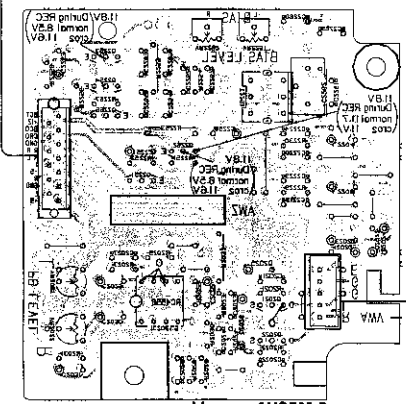
1 MECH unit
(EKX01012)

To RF assembly
(To page 32)



3 MECH unit
(EKX01012)

To RF assembly CW1
(To page 32)



3 MECH assembly

B

C

D

E

F

G

H

I

J

K

L

M

N

O

P

Q

R

S

T

U

V

W

X

Y

Z

1

2

3

4

5

6

7

8

9

0

A

B

C

D

E

F

G

H

I

J

K

L

M

N

O

P

Q

R

S

T

U

V

W

X

Y

Z

1

2

3

4

5

6

7

8

9

0

A

B

C

D

E

F

G

H

I

J

K

L

M

N

O

P

Q

R

S

T

U

V

W

X

Y

Z

1

2

3

4

5

6

7

8

9

0

A

B

C

D

E

F

G

H

I

J

K

L

M

N

O

P

Q

R

S

T

U

V

W

X

Y

Z

1

2

3

4

5

6

7

8

9

0

A

B

C

D

E

F

G

H

I

J

K

L

M

N

O

P

Q

R

S

T

U

V

W

X

Y

Z

1

2

3

4

5

6

7

8

9

0

A

B

C

D

E

F

G

H

I

J

K

L

M

N

O

P

Q

R

S

T

U

V

W

X

Y

Z

1

2

3

4

5

6

7

8

9

0

A

B

C

D

E

F

G

H

I

J

K

L

M

N

O

P

Q

R

S

T

U

V

W

X

Y

Z

1

2

3

4

5

6

7

8

9

0

A

B

C

D

E

F

G

H

I

J

K

L

M

N

O

P

Q

R

S

T

U

V

W

X

Y

Z

1

2

3

4

5

6

7

8

9

0

A

B

C

D

E

F

G

H

I

J

K

L

M

N

O

P

Q

R

S

T

U

V

W

X

Y

Z

1

2

3

4

5

6

7

8

9

0

A

B

C

D

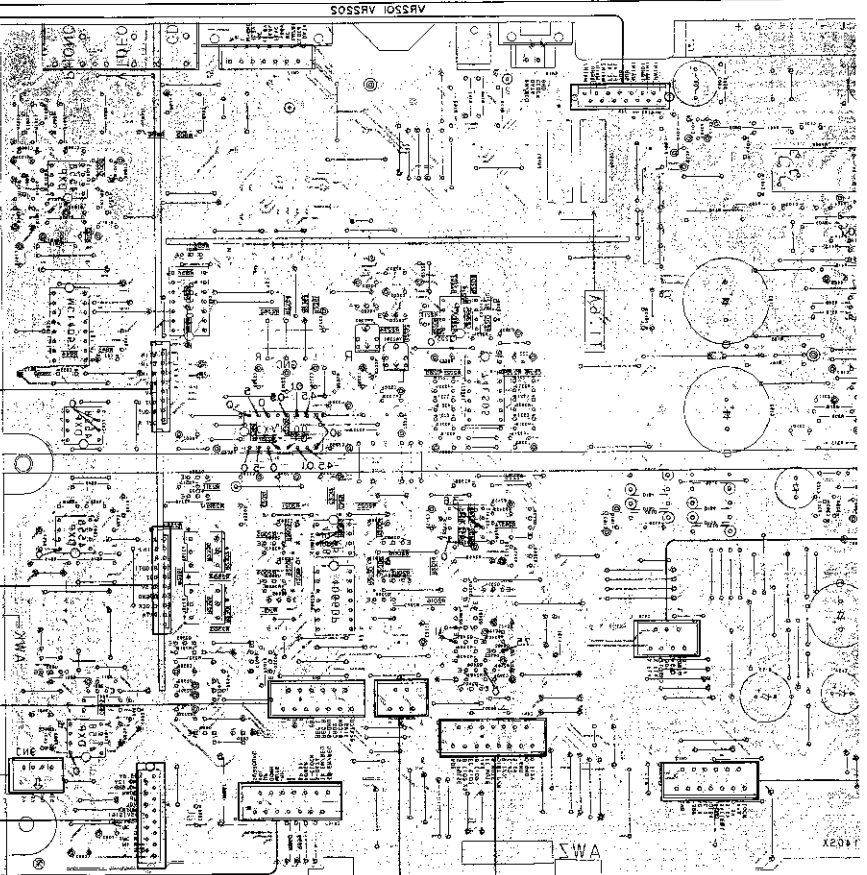
E

F

(138) To DISPLAY assembly 111
(To page 18)

(To page 27)
To IMCHY assembly 12

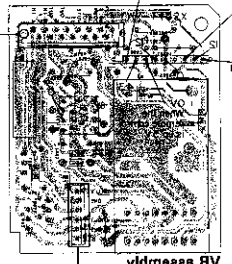
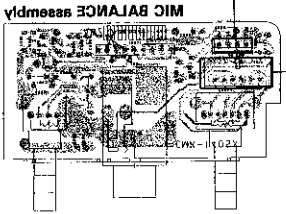
(To page 18)
To DISPLAY assembly 110



(To page 28)
To ZMECHY assembly 14

(To page 28)
To GPO assembly

(To page 28)
To GPO assembly



is up 4 V.V.
remote control
When the

is up 4 V.V.
remote control
When the

is up 4 V.V.
remote control
When the

(To page 43)
To TRANS CONNECT assembly 112

A

B

C

D

1

2

3

4

5

6

7

8

9

10

11

12

13

14

15

16

17

18

19

20

21

22

23

24

25

26

27

28

29

30

31

32

33

34

35

36

37

38

39

40

41

42

43

44

45

46

47

48

49

50

51

52

53

54

55

56

57

58

59

60

61

62

63

64

65

66

67

68

69

70

71

72

73

74

75

76

77

78

79

80

81

82

83

84

85

86

87

88

89

90

91

92

93

94

95

96

97

98

99

100

2.4 AF (AWZ3338), HEAD PHONE, VR and MIC BALANCE assembly

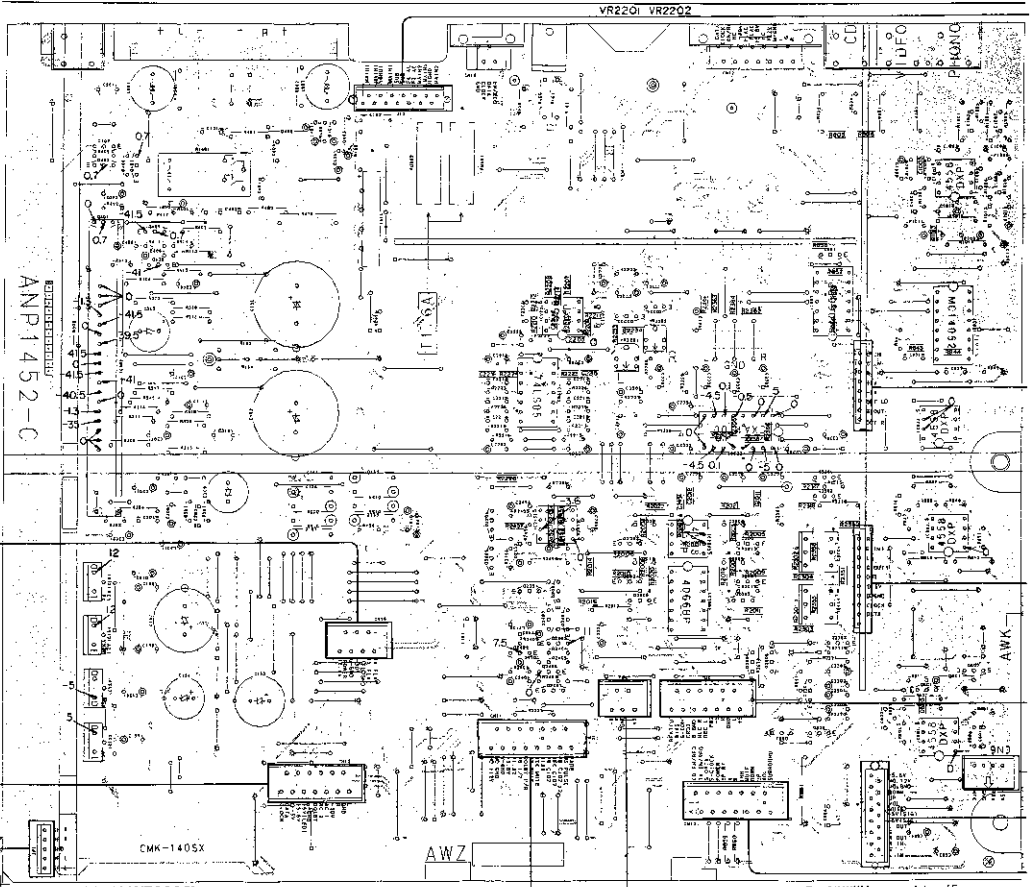
A

- NOTE
1. This PCB assembly may be viewed from the parts mounted side.
 2. The parts which have been mounted on the rear of this PCB can be installed with those shown with the corresponding call-out symbols from the following Table.

P.C.B. pattern diagram reference	Corresponding part number	Part Name
Q3000	Q3000	Transistor
Q3010	Q3010	Radial type transformer
Q3006	Q3006	Diode
Q3211	Q3211	Resistor
Q3013	Q3013	Capacitor (Polyester)
Q3008	Q3008	Capacitor (Phenolic)

P.C.B. pattern diagram reference	Part Name
C	Coil
S	Switch
W	Wiper
L	Coil
F	Film
VR	Variable resistor or trimmer resistor

3. The assembly method marked with (A) indicates rivets; rivets require negative torques.
4. The note terminal number with (B) indicates rivets; rivets require torque only.
5. The transistor pinning to which (C) is attached shows the assembly.

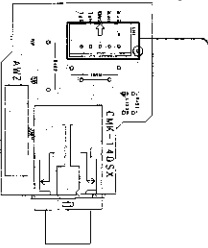


C

To SUB TRANS assembly CN16
(To page 43)

To DISPLAY assembly J12
(To page 19)

HEAD PHONE assembly



D

AF assembly (AWZ3338)

To DISPLAY assembly J11
(To page 18)

To IMBCHA assembly J5
(To page 27)

IC155

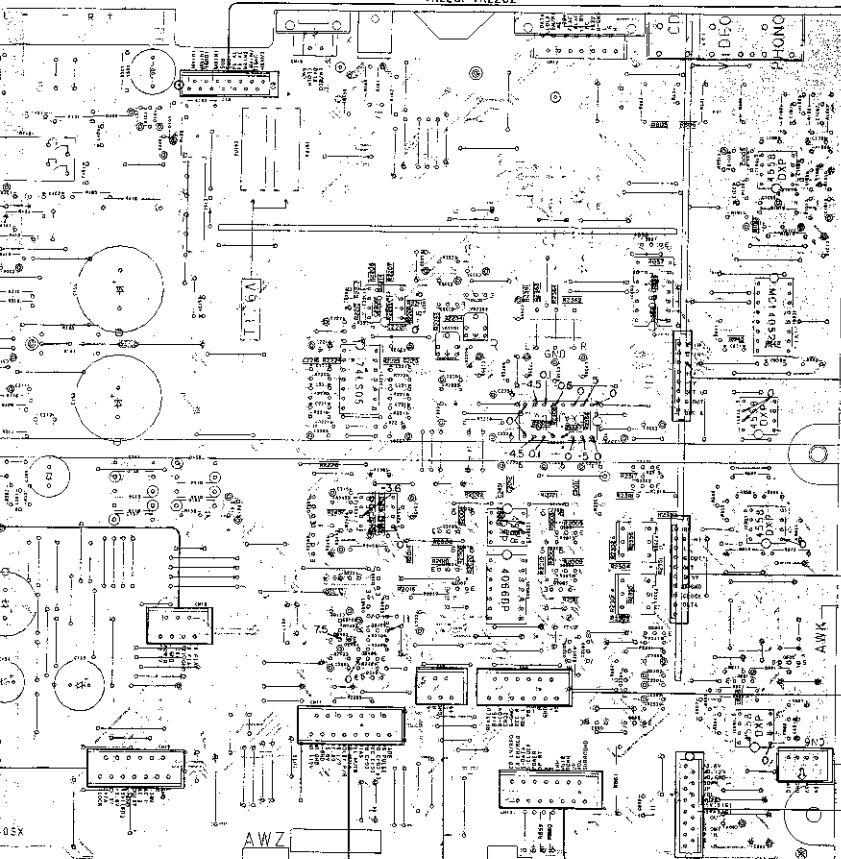
IC2201 IC2202 Q2303 Q2204
Q2201 Q2202 Q2351 IC2451 IC200A IC2002 Q2001-Q2009 Q2301-Q2304
Q2401-Q2406

IC802 Q801
IC803
Q803 Q802

IC1001
IC833 IC801
IC803
IC601 Q601 Q602

VR2201 VR2202

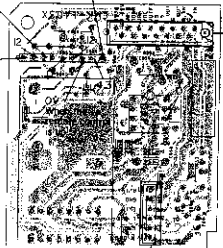
To TRANS CONNECT assembly J15
(To page 43)



OV
When the
remote control
is up 4.7V

OV
When the
remote control
is down 4.7V

OV
When the
remote control
is up 4.7V

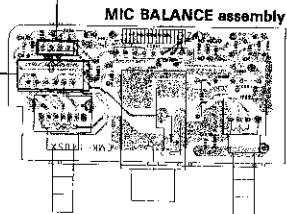


VR assembly

To GEQ assembly
(To page 28)

To GRQ assembly
(To page 28)

To 2MECHA assembly J4
(To page 28)



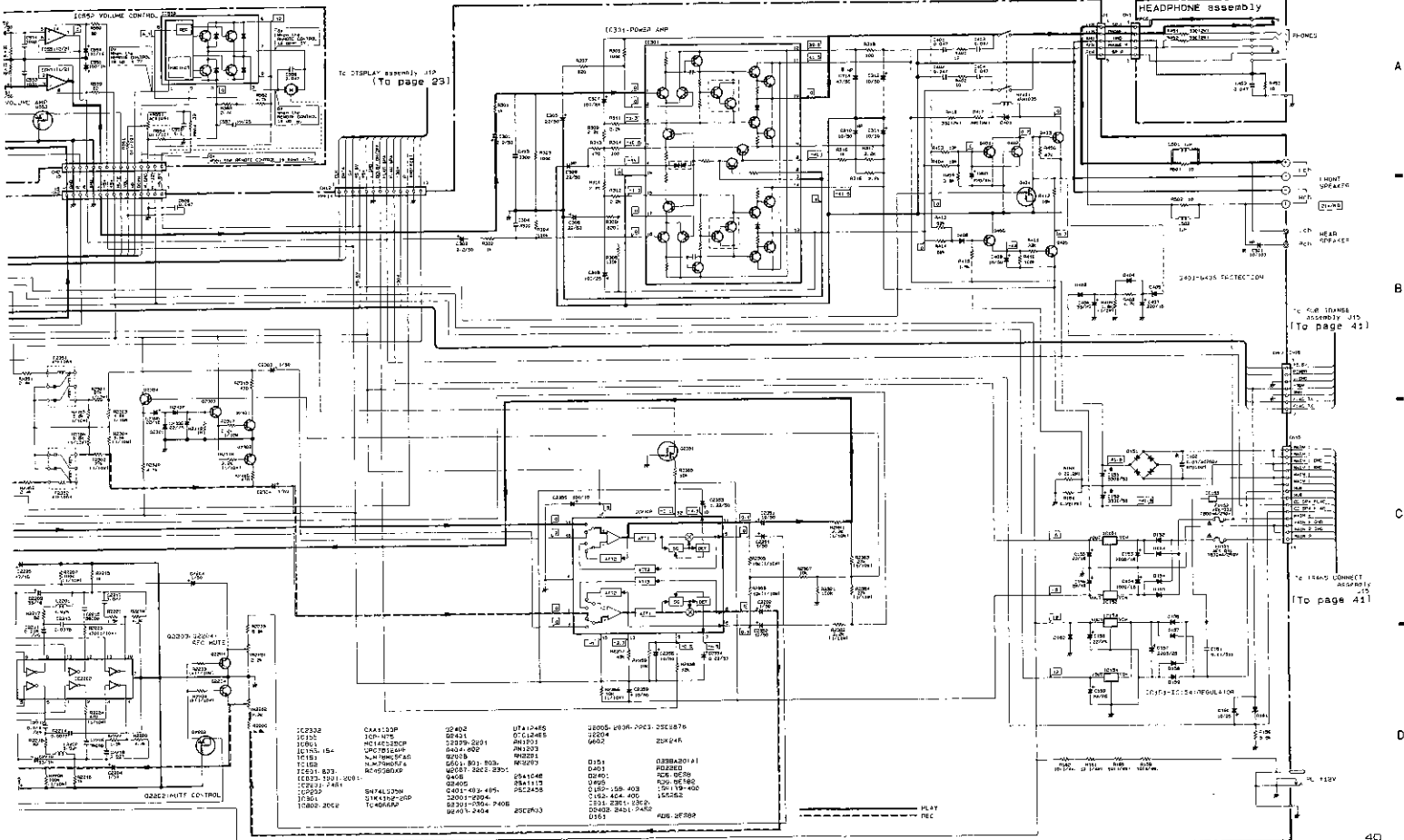
MIC BALANCE assembly

To DISPLAY assembly J11
(To page 18)

To 1MECHA assembly J5
(To page 27)

To DISPLAY assembly J10
(To page 18)

A
B
C
D



TO DISPLAY ASSEMBLY J13
(To page 29)

TO 12A55 ASSEMBLY J15
(To page 41)

TO 12A55 LOW VOLT ASSEMBLY
(To page 41)

1C232	CA4123P	22402	U74104G	22005-203R-002	25C676
1C233	10Y410W	22411	07C1045	22004	22K414R
1C234	HC14C120P	22229-2201	AN1701	6A02	
1C183	12CE154	22018	NR201		
1C184	W49M02F40	22019	NR202		
1C185	RL0700004	22021-201, 203,	NR203		
1C201, 203	RC0500004	22021-202, 2301,	254104E		
1C202, 1901, 1901-		2405	254111B		
1C203, 1981	SH741233W	254112	2541205		
1C204	1W4134P-0P	254113	2541206		
1C205, 206	1C4004P	254114	2541207		
		254115	2541208		
		254116	2541209		
		254117	2541210		
		254118	2541211		
		254119	2541212		
		254120	2541213		
		254121	2541214		
		254122	2541215		
		254123	2541216		
		254124	2541217		
		254125	2541218		
		254126	2541219		
		254127	2541220		
		254128	2541221		
		254129	2541222		
		254130	2541223		
		254131	2541224		
		254132	2541225		
		254133	2541226		
		254134	2541227		
		254135	2541228		
		254136	2541229		
		254137	2541230		
		254138	2541231		
		254139	2541232		
		254140	2541233		
		254141	2541234		
		254142	2541235		
		254143	2541236		
		254144	2541237		
		254145	2541238		
		254146	2541239		
		254147	2541240		
		254148	2541241		
		254149	2541242		
		254150	2541243		
		254151	2541244		
		254152	2541245		
		254153	2541246		
		254154	2541247		
		254155	2541248		
		254156	2541249		
		254157	2541250		
		254158	2541251		
		254159	2541252		
		254160	2541253		
		254161	2541254		
		254162	2541255		
		254163	2541256		
		254164	2541257		
		254165	2541258		
		254166	2541259		
		254167	2541260		
		254168	2541261		
		254169	2541262		
		254170	2541263		
		254171	2541264		
		254172	2541265		
		254173	2541266		
		254174	2541267		
		254175	2541268		
		254176	2541269		
		254177	2541270		
		254178	2541271		
		254179	2541272		
		254180	2541273		
		254181	2541274		
		254182	2541275		
		254183	2541276		
		254184	2541277		
		254185	2541278		
		254186	2541279		
		254187	2541280		
		254188	2541281		
		254189	2541282		
		254190	2541283		
		254191	2541284		
		254192	2541285		
		254193	2541286		
		254194	2541287		
		254195	2541288		
		254196	2541289		
		254197	2541290		
		254198	2541291		
		254199	2541292		
		254200	2541293		
		254201	2541294		
		254202	2541295		
		254203	2541296		
		254204	2541297		
		254205	2541298		
		254206	2541299		
		254207	2541300		
		254208	2541301		
		254209	2541302		
		254210	2541303		
		254211	2541304		
		254212	2541305		
		254213	2541306		
		254214	2541307		
		254215	2541308		
		254216	2541309		
		254217	2541310		
		254218	2541311		
		254219	2541312		
		254220	2541313		
		254221	2541314		
		254222	2541315		
		254223	2541316		
		254224	2541317		
		254225	2541318		
		254226	2541319		
		254227	2541320		
		254228	2541321		
		254229	2541322		
		254230	2541323		
		254231	2541324		
		254232	2541325		
		254233	2541326		
		254234	2541327		
		254235	2541328		
		254236	2541329		
		254237	2541330		
		254238	2541331		
		254239	2541332		
		254240	2541333		
		254241	2541334		
		254242	2541335		
		254243	2541336		
		254244	2541337		
		254245	2541338		
		254246	2541339		
		254247	2541340		
		254248	2541341		
		254249	2541342		
		254250	2541343		
		254251	2541344		
		254252	2541345		
		254253	2541346		
		254254	2541347		
		254255	2541348		
		254256	2541349		
		254257	2541350		
		254258	2541351		
		254259	2541352		
		254260	2541353		
		254261	2541354		
		254262	2541355		
		254263	2541356		
		254264	2541357		
		254265	2541358		
		254266	2541359		
		254267	2541360		
		254268	2541361		
		254269	2541362		
		254270	2541363		
		254271	2541364		
		254272	2541365		
		254273	2541366		
		254274	2541367		
		254275	2541368		
		254276	2541369		
		254277	2541370		
		254278	2541371		
		254279	2541372		
		254280	2541373		
		254281	2541374		
		254282	2541375		
		254283	2541376		
		254284	2541377		
		254285	2541378		
		254286	2541379		
		254287	2541380		
		254288	2541381		
		254289	2541382		
		254290	2541383		
		254291	2541384		
		254292	2541385		
		254293	2541386		
		254294	2541387		
		254295	2541388		
		254296	2541389		
		254297	2541390		
		254298	2541391		
		254299	2541392		
		254300	2541393		
		254301	2541394		
		254302	2541395		
		254303	2541396		
		254304	2541397		
		254305	2541398		
		254306	2541399		
		254307	2541400		
		254308	2541401		
		254309	2541402		
		254310	2541403		
		254311	2541404		
		254312	2541405		
		254313	2541406		
		254314	2541407		
		254315	2541408		
		254316	2541409		
		254317	2541410		
		254318	2541411		
		254319	2541412		
		254320	2541413		
		254321	2541414		
		254322	2541415		
		254323	2541416		
		254324	2541417		
		254325	2541418		
		254326	2541419		
		254327	2541420		
		254328	2		

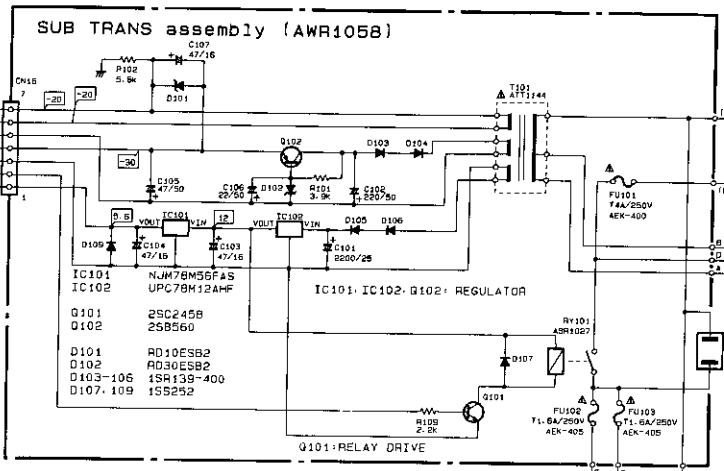
2.5 SUB TRANS (AWR105B) and TRANS CONNECT assembly

A
To AF assembly
CN16
(To page 40)

B

C
To AF assembly
CN15
(To page 40)

D



NOTE

1. The P.C.B. connection diagram is viewed from the copper plated side.
2. The parts which have been indicated on this board can be replaced with those shown with the corresponding symbol listed in the following Table.

P.C.B. symbol	Component part symbol	Part Name
		Resistor
		Capacitor
		Diode
		IC
		Switch
		Relay
		Coil
		Fiber
		Variable resistor or potentiometer
		AC Socket

Other

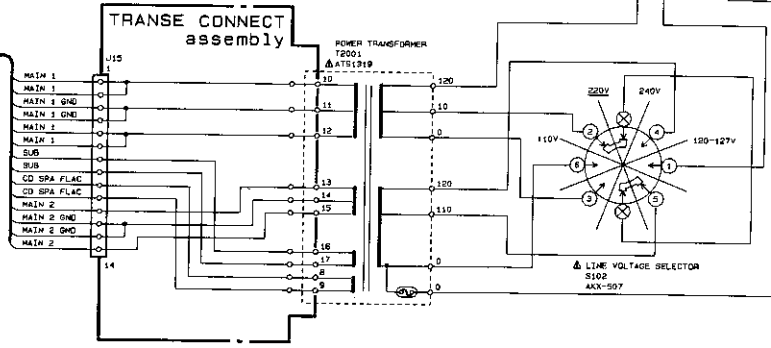
P.C.B. pattern diagram indication	Part Name
IC	IC
S	Switch
RV	Relay
L	Coil
F	Fiber
VR	Variable resistor or potentiometer

3. The resistor terminal marked with (R) indicates correct pinning sequence.
4. The diode terminal marked with (D) indicates correct pinning sequence.
5. The variable terminal to which (V) shows where the wiper is.

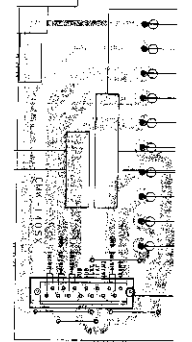
SUB

VOLTAGE SELECTOR S101

TRANSE CONNECT assembly



TRANS CONNECT asse



3. P.C.B 's PARTS LIST

NOTES:

- Parts without part number cannot be supplied.
- Parts marked by "⊗" are not always kept in stock. Their delivery time may be longer than usual or they may be unavailable.
- The Δ mark found on some component parts indicates the importance of the safety factor of the part. Therefore, when replacing, be sure to use parts of identical designation.
- When ordering resistors, first convert resistance values into code form as shown in the following examples.

Ex. 1 When there are 2 effective digits (any digit apart from 0), such as 560 ohm and 47k ohm (tolerance is shown by J = 5%, and K = 10%).

560 Ω	56 $\times 10^1$	561.....	RD14PS	\square \square \square J
47k Ω	47 $\times 10^3$	473.....	RD14PS	\square \square \square J
0.5 Ω	0R5.....		RN2H	\square \square \square K
1 Ω	010.....		RS1P	\square \square \square K

Ex. 2 When there are 3 effective digits (such as in high precision metal film resistors).

5.62k Ω	562 $\times 10^1$	5621.....	RN14SR	\square \square \square \square F
----------------	-------------------	-----------	--------	---

Mark No.	Description	Parts No.	Mark No.	Description	Parts No.
⊗ AF assembly (AWZ3338)					
SEMICONDUCTORS					
IC1001	OP-AMP IC	RC4558DXP	Q404	TRANSISTOR	RN1203
IC151	REGULATOR IC	NJM78M05FAS	Q405	TRANSISTOR	2SC2458
IC152	REGULATOR IC	NJM79M05FA	Q406	TRANSISTOR	2SA1048
IC153, 154	REGULATOR IC	UPC7812AHF	Q901	TRANSISTOR	RN2203
IC155	IC PROTECTOR	ICP-N75	Q902	N-FET	2SK246
IC2001	OP-AMP IC	RC4558DXP	Q801	TRANSISTOR	RN2203
IC2002	LOGIC IC	TC4066BP	Q802	TRANSISTOR	RN1203
IC2301	OP-AMP IC	RC4558DXP	Q803	TRANSISTOR	RN2203
IC2302	LOGIC IC	SN74LS05N	D151	DIODE	D3SBA20 (A)
IC2302	DOLBY-B IC	CXA1100P	D152-159	DIODE	1SR139-400
IC2451	OP-AMP IC	RC4558DXP	D161	ZENER DIODE	RD6.2ESB2
IC301	AUDIO IC	STK4162-2GF	D162	DIODE	1SS252
IC601	OP-AMP IC	RC4558DXP	D2301, 2302	DIODE	1SS252
IC801	LOGIC IC	MC14052BCP	D2401	ZENER DIODE	RD6.8ESB
IC802	LOGIC IC	TC4066BP	D2402	DIODE	1SS252
IC803, 833	OP-AMP IC	RC4558DXP	D2451, 2452	DIODE	1SS252
Q2001-2204	TRANSISTOR	2SC2458	D401	ZENER DIODE	RD22EB
Q2005, 2006	TRANSISTOR	2SC2878	D403	DIODE	1SR139-400
Q2007	TRANSISTOR	RN2203	D404	DIODE	1SS252
Q2008	TRANSISTOR	RN2201	D405	ZENER DIODE	RD6.8ESB2
Q2009, 2201	TRANSISTOR	RN1201	D406, 601	DIODE	1SS252
Q2202	TRANSISTOR	RN2203	RELAY		
Q2203, 2204	TRANSISTOR	2SC2878	RY401	RELAY	ASR1035
Q2301-2304	TRANSISTOR	2SC2458	COILS		
Q2351	TRANSISTOR	RN2203	F2351, 2352	DOLBY FILTER	ATF1064
Q2401	TRANSISTOR	DTC124ES	L151	AXIAL INDUCTOR	LAU2R2K
Q2402	TRANSISTOR	DTA124ES	L2201, 2202	INDUCTOR	LTA382J
Q2403, 2404	TRANSISTOR	2SC2603	L501, 502	COIL	ATH-133
Q2405	TRANSISTOR	2SA1115	CAPACITORS		
Q2406	TRANSISTOR	2SC2458	C1001-1004	CERAMIC CAPACITOR	CCCSL101J50
Q401-403	TRANSISTOR	2SC2458	C1005	CERAMIC CAPACITOR	CKSQYB152K50
			C1006	CERAMIC CAPACITOR	CKDYB152K50
			C1007, 1008	CERAMIC CAPACITOR	CKDYB562K50

Mark No.	Description	Parts No.	Mark No.	Description	Parts No.
R309-312	CARBON FILM RESISTOR	RD1/4PM22J	© GEQ assembly (AWX1048)		
R313	CARBON FILM RESISTOR	RD1/4PMFL471J	The GEQ assembly (AWX1048) is a part of AF assembly (AWZ3338).		
R314	CARBON FILM RESISTOR	RD1/4PMFL101J	SEMICONDUCTORS		
R315	CARBON FILM RESISTOR	RD1/4PM102J	IC701, 702	GEQ IC	LA3607
R316, 317	CARBON FILM RESISTOR	RD1/4PMFL222J	IC703	GEQ EVR IC	LC7522
R318	CARBON FILM RESISTOR	RD1/4PMFL101J	CAPACITORS		
R401, 402	CARBON FILM RESISTOR	RD1/4PM100J	C701, 702	CERAMIC CAPACITOR	CCSQSL331J50
R409	CARBON FILM RESISTOR	RD1/2PM182J	C703-706	ELECTR. CAPACITOR	CEAS2R2M50
R416	METAL OXIDE RESISTOR	RS2LMF331J	C707, 708	ELECTROLYTIC CAPACIT	CEASR15M50
R417	METAL OXIDE RESISTOR	RS2LMF391J	C709, 710	ELECTR. CAPACITOR	CEASR47M50
R501, 502	CARBON FILM RESISTOR	RD1/4PMFL100J	C711, 712	CERAMIC CAPACITOR	CKCYX683M16
R805, 806	CHIP RESISTOR	RS1/10S273J	C713, 714	ELECTROLYTIC CAPACIT	CEASR15M50
R843, 844	CHIP RESISTOR	RS1/10S223J	C715, 716	CERAMIC CAPACITOR	CKCYX273M16
R855, 856	CHIP RESISTOR	RS1/10S332J	C717, 718	CERAMIC CAPACITOR	CKCYX683M16
R857	CHIP RESISTOR	RS1/10S104J	C719, 720	CERAMIC CAPACITOR	CKSQYB103K50
R858	CHIP RESISTOR	RS1/10S000J	C721, 722	CERAMIC CAPACITOR	CKCYX273M16
Other resistors	RD1/8PM□□□□		C723, 724	CERAMIC CAPACITOR	CKSQYB472K50
OTHERS			C725, 726	CERAMIC CAPACITOR	CKSQYB103K50
CN10	CONNECTOR (14P)	KPE14	C727, 728	CERAMIC CAPACITOR	CKSQYB182K50
CN11	CONNECTOR (15P)	KPE15	C729, 730	CERAMIC CAPACITOR	CKSQYB472K50
CN12	CONNECTOR (13P)	KPE13	C731, 732	CERAMIC CAPACITOR	CKSQYB681K50
CN16	CONNECTOR (7P)	KPE7	C733, 734	CERAMIC CAPACITOR	CKSQYB182K50
CN4	CONNECTOR (13P)	KPE13	C735, 736	ELECTR. CAPACITOR	CEAS101M10
CN5	CONNECTOR (5P)	KPE5	C737, 738	CERAMIC CAPACITOR	CKSQYB473K50
CN6	CONNECTOR (4P)	KPC4	RESISTORS		
PIN JACK (6P)	AKB1121		R701	CARBONFILM RESISTOR	RD1/8PM103J
PIN JACK (2P)	AKB1146		R703, 704	CARBONFILM RESISTOR	RD1/8PM222J
SPEAKER TERMINAL 4-P	AKA-109		R710	RESISTOR ARRAY (1M)	RA8T105J
JACK SOCKET (14P)	AKN-203		R711, 712	CARBON FILM RESISTOR	RD1/4PM390J
JACK SOCKET (4P)	AKP1048		R725, 727	CARBONFILM RESISTOR	RD1/8PM103J
GEQ assembly	AWX1048		Other resistors		
				RS1/10S□□□□	
			VR assembly		
			SEMICONDUCTORS		
			IC551	OP-AMP IC	RC4558DXP
			IC552	MECHANISM DRIVER IC	TA72915
			Q551, 552	TRANSISTOR	ZSC2878
			Q553	TRANSISTOR	RN2203

Mark No.	Description	Parts No.	Mark No.	Description	Parts No.
CAPACITORS			Q1501-1504	TRANSISTOR	RN1201
C551, 552	ELECTR.CAPACITOR	CEAS4R7M50	Q1505-1507	TRANSISTOR	RN1203
C553, 554	CHIP CAPACITOR	CSQCH101J50	Q1508, 1509	TRANSISTOR	RN2201
C565, 566	ELECTR.CAPACITOR	CEAS101M16	Q1510	TRANSISTOR	RN1203
C557	ELECTR.CAPACITOR	CEAS220M25	Q1601	TRANSISTOR	RN2204
C558	CERAMIC CAPACITOR	CKSQYF104Z50	Q1602	TRANSISTOR	RN1203
C559	CERAMIC CAPACITOR	KCKYF473Z50	Q1603	TRANSISTOR	RN2204
RESISTORS			Q1604	TRANSISTOR	2SA1515
VR551	VARIABLE RESISTOR	ACX1051	Q1605	TRANSISTOR	RN1203
R554	CHIP RESISTOR	RS1/10S000J	Q1606	TRANSISTOR	2SA1515
R555, 556	CHIP RESISTOR	RS1/10S104J	Q1607	TRANSISTOR	RN1203
R561	CHIP RESISTOR	RS1/10S000J	Q1608	TRANSISTOR	2SA1515
R565, 566	CHIP RESISTOR	RS1/10S102J	Q1609	TRANSISTOR	RN1203
	Other resistors	RD1/8PM□□□□	Q1610	TRANSISTOR	2SA1515
			Q1611	TRANSISTOR	RN1203
HEAD PHONE assembly			D1501-1504	LED (GREEN)	AEL1130
CAPACITOR			D1505	LED (RED)	AEL1119
C453	CERAMIC CAPACITOR	CKDYF473Z50	D1506, 1507	LED (RED)	AEL1126
RESISTORS			D1508, 1509	LED	AEL1128
R451, 452	METAL OXIDE RESISTOR	RS2LMF331J	D1510	LED (RED)	AEL1065
R453	CARBONFILM RESISTOR	RD1/8PM100J	D1511-1516	LED (RED)	AEL1108
OTHERS			D1517-1531	DIODE	1SS252
CN1	JACK (HEAD PHONE) CONNECTOR (5P)	AKN1010 KPC5	D1535-1543	DIODE	1SS252
TRANS CONNECT assembly			D1544, 1545	LED (GREEN)	AEL1129
No parts are supplied with the TRANS CONNECT assembly.			D1546	LED (RED)	AEL1065
© DISPLAY assembly (AWZ3351)			D1547, 1548	DIODE	1SS252
SEMICONDUCTORS			D1601-1617	DIODE	1SS252
IC1501	LOGIC IC	SN74LS05N	D1651-1658	DIODE	1SS252
IC1502	LOGIC IC	SN74LS03N	D1660-1664	DIODE	1SS252
IC1503	GEQ-BPF IC	BA3826S	SWITCHES		
IC1504	OP-AMP IC	RC4558DXP	S1504-1507	SWITCH	ASG1034
IC1505	SPECTRUM ANALYZER CONTROL μ -COM	PD3174A	S1510-1514	SWITCH	ASG1034
IC1551	SYSTEM CONTROL μ -COM	PD5147B	S1516-1519	SWITCH	ASG1034
IC1552	RESET IC	M51951BSL	S1522-1525	SWITCH	ASG1034
			S1528	SWITCH	ASD1012
			S1529	ROTARY ENCODER	ASX1009
			S1530-1535	SWITCH	ASG1034
			S1537-1544	SWITCH	ASG1034
			S1546-1549	SWITCH	ASG1034
			COILS		
			L1501	AXIAL INDUCTOR	LAU221K
			L1651	AXIAL INDUCTOR	LAU220K
			CAPACITORS		
			C1501	CERAMIC CAPACITOR	CKDYX473M18
			C1504	ELECTR.CAPACITOR	CEJA470M10
			C1505	CEA (47000/5.5V)	ACH1070
			C1506	CERAMIC CAPACITOR (0.022)	ACG1022
			C1507	CERAMIC CAPACITOR	CCDSL100D50

Mark No.	Description	Parts No.	Mark No.	Description	Parts No.
C1508	CERAMIC CAPACITOR	ACG1022	CAPACITORS		
C1509	CERAMIC CAPACITOR	CKMYB102K50	C901	CERAMIC CAPACITOR	CKMYB681K50
C1510	CERAMIC CAPACITOR	CKDYX473M16	C902	ELECTR.CAPACITOR	CEAS010M50
C1601	ELECTR.CAPACITOR	CEAS470M10	C903	CERAMIC CAPACITOR	CKMYB471K50
C1602	ELECTR.CAPACITOR	CEASR33M50	C904, 905	ELECTR.CAPACITOR	CEAS100M25
C1651	CERAMIC CAPACITOR	CKCYF473Z50	C906, 907	CERAMIC CAPACITOR	CKDYX473M16
C1652	ELECTR.CAPACITOR	CEAS101M16	C908	CERAMIC CAPACITOR	CKDYF473Z50
C1653	CERAMIC CAPACITOR	CKCYF473Z50	RESISTORS		
C1654-1658	CERAMIC CAPACITOR (1000p)	ACG1020	VR552	VARIABLE RESISTOR	ACS1066
C1659	ELECTR.CAPACITOR	CEAS010M50	VR901	VARIABLE (10K - X1)	ACS1065
RESISTORS			Other resistors RD1/8PM[][]		
VR1601, 1602	VR	VRTM6V203	OTHERS		
VR1603	VR	VRTM6V103	CN3	JUMPER CONNECTOR	KPC6
R1543	RESISTOR ARRAY (100k)	RA13S104J	JACK (MIC) AKN1017		
R1544	RESISTOR ARRAY (100k)	RA15T104J	© SUB TRANS assembly (AWR1058)		
R1662	RESISTOR ARRAY (3.3K)	RA8T332J	SEMICONDUCTORS		
Other resistors		RD1/8PM[][]	IC101	REGULATOR IC	NJM78M56FAS
OTHERS			IC102	REGULATOR IC	UPC78M12AHF
V1501	FL TUBE	AAV1116	Q101	TRANSISTOR	2SC2458
X1502	CERAMIC RESONATOR	ASS1018	Q102	TRANSISTOR	2SB560
X1651	CERAMIC RESONATOR	ASS1025	D101	ZENER DIODE	RD10ESEB2
REMOTE RECEIVER UNIT		AXX1010	D102	ZENER DIODE	RD30ESB2
CN8	CONNECTOR (15P)	KPE15	D103-106	DIODE	1SR139-400
1 MECHA SW assembly			D107, 109	DIODE	1SS252
SWITCHES			RELAY		
S1551-1555	SWITCH	ASG1034	RY101	RELAY	ASR1027
2 MECHA SW assembly			TRANSFORMER		
SWITCHES			△ T101	POWER TRANSFORMER	ATT1144
S1556-1560	SWITCH	ASG1034	CAPACITORS		
MIC BALANCE assembly			C101	ELECTR.CAPACITOR	CEAS222M25
SEMICONDUCTORS			C102	ELECTR.CAPACITOR	CEAS221M50
IC901	OP-AMP IC	NJM4558S-X	C103, 104	ELECTR.CAPACITOR	CEAS470M16
			C105	ELECTR.CAPACITOR	CEAS470M50
			C106	ELECTR.CAPACITOR	CEAS220M50
			C107	ELECTR.CAPACITOR	CEAS470M16
			RESISTORS		
			R101	CARBON FILM RESISTOR	RD1/4PMF392J
			Other resistors		RD1/8PM[][]
			OTHERS		
			AC socket (OUTLET 1P) AKP1078		

Mark No.	Description	Parts No.
1 MECHA assembly		
CAPACITORS		
C2001, 2002	CERAMIC CAPACITOR	CKMYB391K50
C2005, 2006	AUDIO FILM CAPACITOR	CFTXA223J50
C2007, 2008	ELECTR.CAPACITOR	CEAS4R7M50
C2009, 2010	ELECTR.CAPACITOR	CEAS470M10
RESISTORS		
VR2001, 2002	VR	VRTM6H202
	Other resistors	RD1/8PM□□□□

Mark No.	Description	Parts No.
RESISTORS		
VR2021, 2022	VR	VRTM6V202
VR2251, 2252	VR	VRTM6H204
R2253	CARBON FILM RESISTOR	RD1/2PM360J
	Other resistors	RD1/8PM□□□□

2 MECHA assembly**SEMICONDUCTORS**

IC2001, 2021	OP-AMP IC	RC4558DXP
Q2021, 2022	N-FET	2SK373
Q2251	TRANSISTOR	RN1201
Q2252	TRANSISTOR	2SA1515
Q2253, 2254	TRANSISTOR	2SC3377
Q2255	TRANSISTOR	2SC2458
D2021-2026	DIODE	1SS252

COILS & TRANSFORMERS

L2204, 2205	INDUCTOR	LTA822J
T2251	OSC TRANSFORMER	ATX-043

CAPACITORS

C2021, 2022	CERAMIC CAPACITOR	CCMSL100D50
C2023, 2024	CERAMIC CAPACITOR	CKMYB391K50
C2027, 2028	AUDIO FILM CAPACITOR	CFTXA223J50
C2029, 2030	ELECTR.CAPACITOR	CEAS4R7M50
C2031, 2032	ELECTR.CAPACITOR	CEAS470M10
C2219, 2220	CERAMIC CAPACITOR	CCDSL271K500
C2223, 2224	CERAMIC CAPACITOR	CKDYB681K50
C2251	ELECTR.CAPACITOR	CEAS470M16
C2252, 2253	CERAMIC CAPACITOR	CGMYX103M16
C2254	CERAMIC CAPACITOR	CKMYB221K50
C2255	MYLOR FILM CAPACITOR	CQMA153K50
C2256	CERAMIC CAPACITOR	CKMYB661K50
C2257	MYLOR FILM CAPACITOR	CQMA123K250
C2258	ELECTR.CAPACITOR	CEAS4R7M50
C2259, 2260	CERAMIC CAPACITOR	CCCSL101K500
C2261	MYLOR FILM CAPACITOR	CQMA562K400
C2262	CQPA (2000P/630V)	ACE1020
C2263	ELECTR.CAPACITOR	CEAS100M50

4. FOR YPW TYPE

NOTES:

- Parts without part number cannot be supplied.
- The Δ mark found on some component parts indicates the importance of the safety factor of the part. Therefore, when replacing, be sure to use parts of identical designation.
- Parts marked by "Ⓢ" are not always kept in stock. Their delivery time may be longer than usual or they may be unavailable.

4.1 CONTRAST OF MISCELLANEOUS PARTS

The DC-Z84/YPW type is the same as the DC-Z84/SD type with the exception of the following sections.

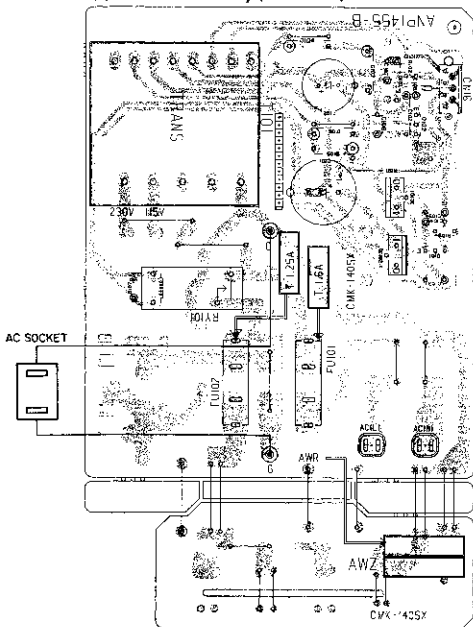
Mark	Symbol & Description	Part No.		Remarks
		DC-Z84/SD type	DC-Z84/YPW type	
⊙	SUB TRANS assembly	AWR1058	AWR1062	
Δ	S101 Line voltage selector switch	AKX1004	
Δ	S102 Line voltage selector switch	AKX-507	
Δ	T2001 Power transformer	ATS1319	ATS1320	
Δ	FU101 (T4A/250V)	AEK-400	
Δ	FU101 (T2/250V)	AEK-017	
Δ	FU103 (T1.6A/250V)	AEK-405	
Δ	AC Power cord	ADG1051	ADG-043	
Δ	AC socket (OUTLET 1P)	AKP-517	
	Operating instructions (Spanish)	ARC1234	

4.2 SUB TRANS assembly (AWR1062)

The SUB TRANS assembly (AWR1062) is the same as the SUB TRANS assembly (AWR1058) with the exception of the following sections.

Mark	Symbol & Description	Part No.		Remarks
		AWR1058	AWR1062	
Δ	T101 Power transformer	ATT1144	ATT1149	
Δ	AC socket (OUTLET 1P)	AKP1078	

SUB TRANS assembly (AWR1062)



NOTE

1. The P.C.B. connection diagram is viewed from the parts mounted side.
2. The parts which have been mounted on the board can be replaced with those or even with the corresponding marking symbol listed in the following Table.

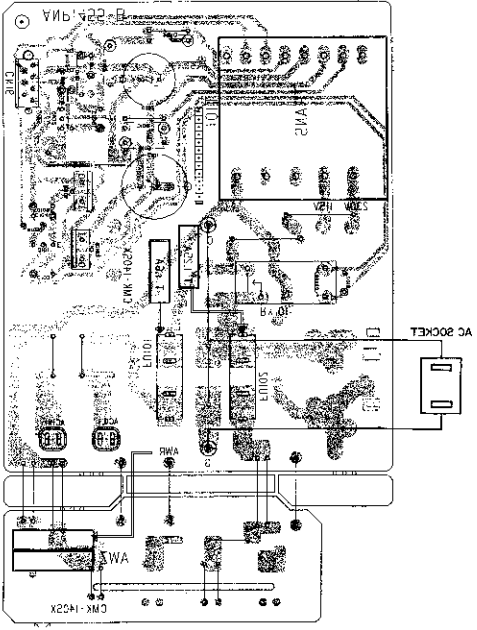
P.C.B. pattern diagram indication	Corresponding part symbol	Part Name
		Transistor
		Resistor type transistor
		Diode
		Resistor
		Capacitor (Polarized)
		Capacitor (Nonpolarized)

Others

P.C.B. pattern diagram indication	Part Name
	IC
	Switch
	Relay
	Coil
	Filter
	Variable resistor or Potentiometer

3. The capacitor terminal marked with @ (triangle) shows positive terminal.
4. The diode terminal marked with @ (triangle) shows cathode side.
5. The cross (x) terminal to which E or shield shows pin symbol.

SUB TRANS assembly (WR1082)



A

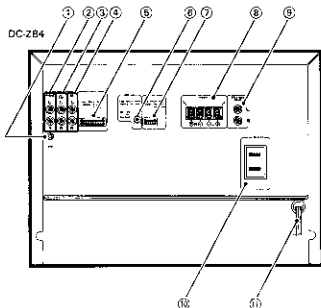
B

C

D

5. PANEL FACILITIES

REAR PANEL FACILITIES



① Ground terminal (GND)

Connect this to the ground terminal on the turntable (except for PL-Z94).

② PHONO input jacks

Connect the audio cord of the turntable to these jacks.

③ LD/VCR jacks

Connect to audio output jacks of LD player or VCR, etc.

④ CD input jacks

Connect to output jacks of a CD player.

⑤ TUNER jacks

Connect the tuner cord here.

⑥ TURNTABLE (DC 12 V OUTPUT) jack

This jack supplies power to the turntable PL-Z94.
Connect the power supply cord of the turntable to this jack.

⑦ CD jacks

Connect to a compact disc player PD-Z74T or PD-Z84M flat cable.

⑧ SPEAKERS terminals

L: Connect the left speaker system as seen from the listening position.
R: Connect the right speaker system as seen from the listening position.

NOTE:

Connect a speaker system having a nominal impedance ranging from 8 Ω to 16 Ω .

⑨ SURROUND SPEAKERS jacks

Connect the surround speaker systems.

NOTE:

Connect a speaker system having a nominal impedance of 16 Ω or more.

⑩ AC OUTLET (SWITCHED 50 W MAX)

Power supplied through this outlet is turned on and off by the cassette deck amplifier's POWER switch. Total electrical power consumption of connected equipment should not exceed 50 W.

NOTE:

Do not connect appliances with high power consumption such as heaters, irons, or television sets to the AC OUTLET in order to avoid overheating or fire hazard.

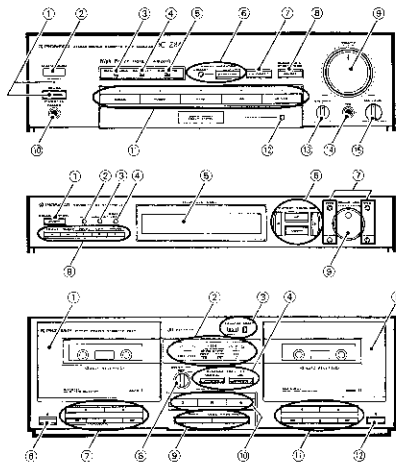
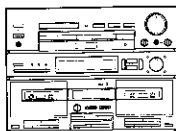
This can cause the cassette deck amplifier to malfunction.

⑪ Power cord

Connect this to the household electrical outlet.

FRONT PANEL FACILITIES

DC-Z84



- This unit has an automatic tape type selector
- Tapes can be played back on deck I; tapes can be played back and recorded on deck II.
- Sound can be recorded as adjusted by the sound image controller.
- Use a normal or chrome position tape.

Amplifier section

① POWER STANDBY/ON switch /STANDBY indicator
This is the switch for electric power.

ON: When set to the ON position, power is supplied and the unit becomes operational.

STANDBY: When set to the STANDBY position, the main power flow is cut and the unit is no longer fully operational. A minute flow of power feeds the unit to maintain operation readiness.

When the STANDBY indicator is on, the unit is in STANDBY.

② REMOTE SENSOR window

③ SMART OPER. (OPERATION) indicator

This lights when smart operation is on. It goes out after about 30 seconds.

④ CD DIRECT indicator

This lights when CD DIRECT is on.

⑤ SURROUND indicator

This lights when SURROUND & STEREO WIDE is on.

⑥ SMART OPERATION buttons

[START-SET]

Use when programming memory and operating SMART OPERATION.

[MEMORY]

Use when programming SMART OPERATION into memory.

⑦ CD DIRECT button

Press this button to listen to a CD without passing the signal through sound quality adjustment circuits.

⑧ SURROUND & STEREO WIDE button

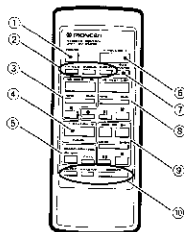
By turning this switch ON, you can enjoy surround reproduction when rear speakers are used.

By turning this switch ON, you can enjoy STEREO WIDE reproduction with greater left-right spread when rear speakers are not used.

NOTE:

- In the case of monaural source, SURROUND & STEREO WIDE effects cannot be obtained.
- SURROUND & STEREO WIDE functions do not operate if CD DIRECT is on.

Remote control unit



① POWER button

② Function buttons

- LD/VCR Sets function to LD/VCR.
 PHONO Sets function to PHONO.
 CD DIRECT Sets function to CD DIRECT.

③ DECK I operation buttons: Same as Deck I operation buttons on the cassette deck amplifier.

④ TUNER STATION button

- Before operation, memorize broadcast stations in the STATION CALL buttons.

+ Stations change in order in the upward direction
 - Stations change in order in the downward direction.

⑤ SOUND CONTROL operation buttons

- ON/OFF: Turns the sound image controller on and off.
 CALL: Recalls the preset equalizing curves (PRESET) and memorized sound control (PROGRAM) in sequence.

⑥ VOLUME + (UP)/- (DOWN) button

When pressed, VOLUME on the amplifier is actually moved by a motor.

⑦ SURROUND button

Turns SURROUND & STEREO WIDE on and off.

⑧ Deck II operation button: Same as Deck II operation buttons and DECK II CONTROL buttons on the cassette deck amplifier (except MUTE).

⑨ CD operation buttons

Perform the connections so that the CD player is operated by the remote control unit.

- ▶ Play
 DISC DISC selection
 ■ Stop
 II Pause
 ◀▶ Track search

NOTE:

Note that the DISC selector button on the remote control unit may not operate, depending on the CD player used.

⑩ Timer operation buttons

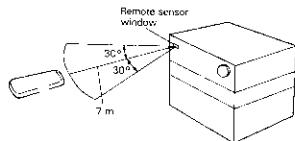
- SLEEP: Sets the sleep timer.
 WAKE-UP: Timer playback setting/cancellation can be performed when the timer playback time has been set. This is shown in the tuner display section.
 SNOOZE: Turns off power if pressed after timer playback begins. Timer playback begins again approx. 5 minutes later.

The amplifier input selector automatically switches to the music source being operated when you press the CD playback (▶), cassette deck playback (◀▶), or tuner station controls.

NOTE:

It is not possible to operate the CD player with the remote control unless the control cord is connected.

Range of remote control



When the remote control unit is pointed at the remote sensor window on the amplifier section and any of its buttons is pressed, the tuner and other components can be operated by remote control. Distance: Within a range of approx. 7 meters (23 feet) from the remote sensor window.

Angle: Within approx. 30 degrees from the center of the remote sensor window.

Remote control will not be possible if there is an obstacle between the remote control unit itself and the remote sensor window. Performance of the remote control unit is adversely affected in the presence of strong fluorescent light. Keep such lights away, especially from the sensor window.

6. SPECIFICATIONS

Amplifier Section

Continuously Average Power Output is 37 Watts* per channel, min., at 8 ohms from 40 Herz to 20,000 Herz, with no more than 0.4 %** total harmonic distortion.

* Measured pursuant to the Federal Trade Commission's Trade Regulation rules on Power Output Claims for Amplifiers.

Music power (DIN)	80 W ± 80 W (1 kHz, T.H.D. 1 %, 8 Ω)
Continuous Power Output (DIN)	45 W ± 45 W (1 kHz, T.H.D. 1 %, 8 Ω)
Peak music power output	500 W
Graphic equalizer frequency band	60 Hz, 150 Hz, 400 Hz, 1 kHz, 2.4 kHz, 6 kHz, 15 kHz, ± 5.5 dB
Total Harmonic Distortion (40 Hz to 20,000 Hz, 22.5 W, 8 Ω)**	No more than 0.2 %

Cassette Deck Section

Systems	4 track, 2-channel stereo
Heads	Recording/playback head x 1 Playback head x 1 Erasing head x 1
Motor	DC servo 2 speed motor x 2
Wow and Flutter	No more than 0.09 % (WRMS)
Fast Winding Time	Approximately 105 seconds IC-60 repeat
Frequency Response (f - 20 dB recording):	
Normal tape	35 Hz to 14,000 Hz ± 6 dB
CrO ₂ tape	35 Hz to 15,000 Hz ± 6 dB
Signal-to-Noise ratio	56 dB
Dolby NR OFF	
Noise Reduction Effect	More than 10 dB (at 5 kHz)
Dolby B type NR ON	

Furnished Parts

Operating Instructions	1
Remote Control Unit	1
Dry Cell Batteries	2

Miscellaneous

Power requirements	
Australian model	e.c. 240 Volts ~, 50/60 Hz
Other destination models	
..... AC 110/120-127/220/240 V (switchable) 50/60 Hz	
Power Consumption	336 W
Dimensions	360 (W) x 271 (H) x 309 (D) mm 14-3/16 (W) x 10-11/16 (H) x 12-3/16 (D) in
Weight (without package)	8 kg (17 lb 11 oz)

Accessories

EP Adapter	1
------------------	---

* Specifications and design subject to possible modification without notice due to improvement.

** Measured By Audio Spectrum Analyzer.