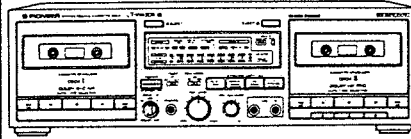


Service Manual



● The above illustration shows U.S. model of CT-W630R.

ORDER NO.
ARP1959

STEREO DOUBLE CASSETTE DECK

CT-W630R

CT-W530R

CT-W530R-S

CT-W630R, CT-W530R AND CT-W530R-S HAVE FOLLOWING VERSIONS :

Type	Applicable model			Power requirement	Export destination
	CT-W630R	CT-W530R	CT-W530R-S		
KUC	○	○		AC120V only	U.S.A. and Canada
HEM	○	○		AC220V, 240V (switchable)	European continent
HEWM			○	AC220V, 240V (switchable)	European continent
HB	○			AC220V, 240V (switchable)	United Kingdom
HPW	○	○		AC220V, 240V (switchable)	Australia
SD	○	○		AC110V, 120V-127V, 220V, 240V (switchable)	Kingdom of Saudi Arabia and general market
KUCXJ		○		AC120V only	U.S.A. and Canada
HEMXJ		○		AC220V, 240V (switchable)	European continent

- This manual is applicable to the KUC, KUCXJ, HEM, HEMXJ, HB, HEWM, HPW and SD types.
- As to the CT-W630R/HEM, HB, HPW and SD types, refer to pages 41, 42.
- As to the CT-W530R/KUC, KUCXJ, HEM, HEMXJ, HPW, SD and CT-W530R-S/HEWM types, refer to pages 43, 44.
- Ce manuel pour le service comprend les explications de réglage en français.
- Este manual de servicio trata del método ajuste escrito en español.

CONTENTS

1. SAFETY INFORMATION.....	2	8. RÉGLAGE.....	33
2. EXPLODED VIEWS AND PARTS LIST.....	3	8. AJUSTE.....	37
3. SCHEMATIC DIAGRAM.....	12	9. FOR CT-W630R/HEM, HB, HPW AND SD TYPES.....	41
4. P.C. BOARDS CONNECTION DIAGRAM.....	15	10. FOR CT-W530R/KUC, KUCXJ, HEM, HEMXJ, HPW, SD AND CT-W530R-S/HEWM TYPES.....	43
5. BLOCK DIAGRAM.....	23	11. SPECIFICATIONS.....	45
6. PACKING.....	25	12. PANEL FACILITIES.....	46
7. ELECTRICAL PARTS LIST.....	26		
8. ADJUSTMENTS.....	29		

This service manual is intended for qualified service technicians; it is not meant for the casual do-it-yourselfer. Qualified technicians have the necessary test equipment and tools, and have been trained to properly and safely repair complex products such as those covered by this manual.

Improperly performed repairs can adversely affect the safety and reliability of the product and may void the warranty. If you are not qualified to perform the repair of this product properly and safely, you should not risk trying to do so and refer the repair to a qualified service technician.

WARNING

Lead in solder used in this product is listed by the California Health and Welfare agency as a known reproductive toxicant which may cause birth defects or other reproductive harm (California Health & Safety Code, Section 25249.5).

When servicing or handling circuit boards and other components which contain lead in solder, avoid unprotected skin contact with the solder. Also, when soldering do not inhale any smoke or fumes produced.

1. SAFETY INFORMATION

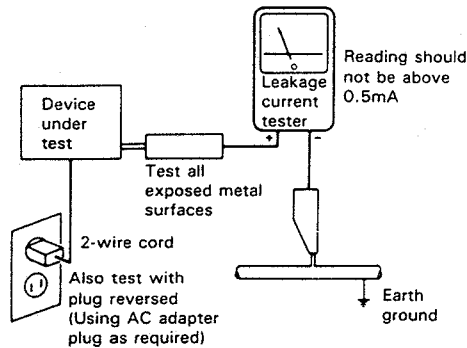
(FOR USA MODEL ONLY)

1. SAFETY PRECAUTIONS

The following check should be performed for the continued protection of the customer and service technician.

LEAKAGE CURRENT CHECK

Measure leakage current to a known earth ground (water pipe, conduit, etc.) by connecting a leakage current tester such as Simpson Model 229-2 or equivalent between the earth ground and all exposed metal parts of the appliance (input/output terminals, screwheads, metal overlays, control shaft, etc.). Plug the AC line cord of the appliance directly into a 120V AC 60Hz outlet and turn the AC power switch on. Any current measured must not exceed 0.5mA.



AC Leakage Test

ANY MEASUREMENTS NOT WITHIN THE LIMITS OUTLINED ABOVE ARE INDICATIVE OF A POTENTIAL SHOCK HAZARD AND MUST BE CORRECTED BEFORE RETURNING THE APPLIANCE TO THE CUSTOMER.

2. PRODUCT SAFETY NOTICE

Many electrical and mechanical parts in the appliance have special safety related characteristics. These are often not evident from visual inspection nor the protection afforded by them necessarily can be obtained by using replacement components rated for voltage, wattage, etc. Replacement parts which have these special safety characteristics are identified in this Service Manual.

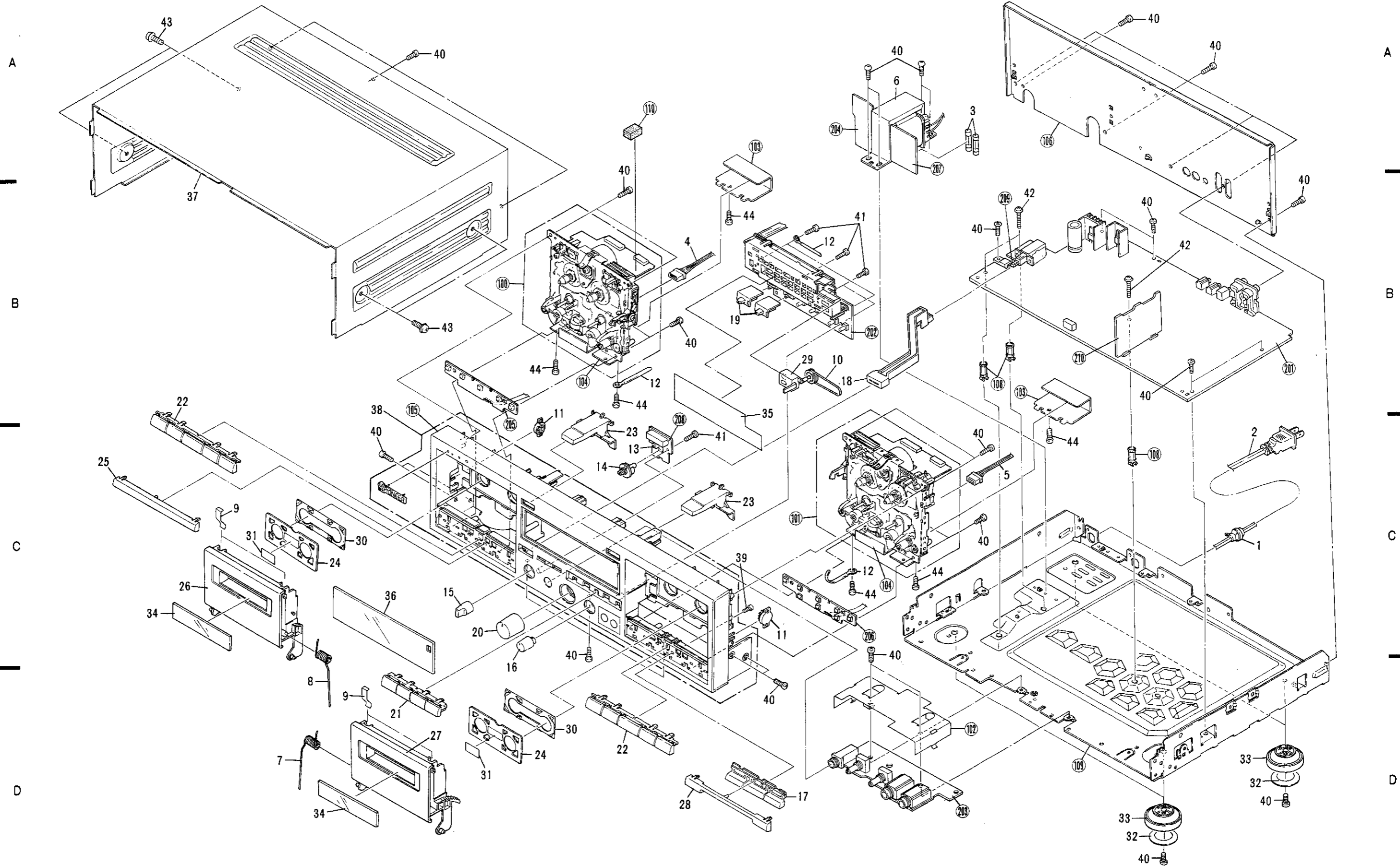
Electrical components having such features are identified by marking with a Δ on the schematics and on the parts list in this Service Manual.

The use of a substitute replacement component which does not have the same safety characteristics as the PIONEER recommended replacement one, shown in the parts list in this Service Manual, may create shock, fire, or other hazards.

Product Safety is continuously under review and new instructions are issued from time to time. For the latest information, always consult the current PIONEER Service Manual. A subscription to, or additional copies of, PIONEER Service Manual may be obtained at a nominal charge from PIONEER.

2. EXPLODED VIEWS AND PARTS LIST

2.1 EXTERIOR



NOTES :

- Parts without part number cannot be supplied.
- The Δ mark found on some component parts indicates the importance of the safety factor of the part. Therefore, when replacing, be sure to use parts of identical designation.
- Parts marked by "⊙" are not always kept in stock. Their delivery time may be longer than usual or they may be unavailable.

Parts List of Exterior

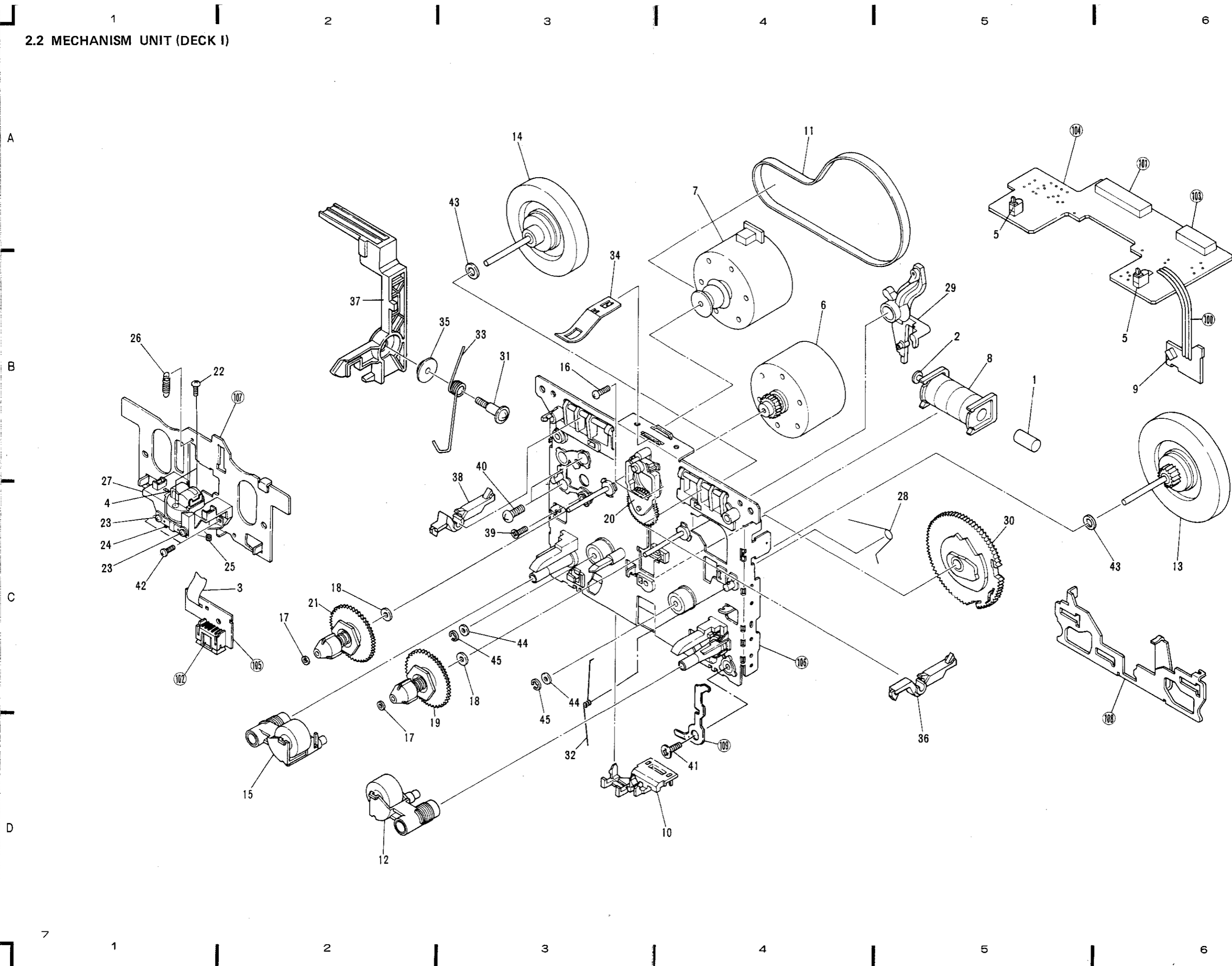
Mark	No.	Part No.	Description	Mark	No.	Part No.	Description
Δ	1	CM-22	Strain relief		105		Front panel
Δ	2	RDG1010	AC power cord		106		Rear panel
Δ	3	REK1001	FU1801, FU1802		107	
			Fuse (1.5A)		108		PCB spacer
Δ	4	RKP1322	Connector assembly 3P		109		Main chassis (FE)
Δ	5	RKP1323	Connector assembly 5P				
					110		Spacer
Δ	6	RTT1116	Power transformer				
	7	RBH1254	Door spring (L)		201		Main unit
	8	RBH1255	Door spring (R)		202		Display unit
	9	RBK1004	Half pressure spring		203		Volume unit
	10	REB1046	Counter belt		204		Transformer 1 unit
					205		Control SW (1) unit
	11	REC1005	Damper assembly				
	12	RNH-184	Cord clammer		206		Control SW (2) unit
	13	RNK1522	SW cap		207		Transformer 2 unit
	14	RNK1523	Rotary SW shaft		208		Switch unit
	15	RAC1414	Knob (B)		209		Regulator unit
					210		HX unit
	16	RAC1421	VR knob (B)				
	17	RAC1424	Operation knob (B)				
	18	RAC1427	Power knob				
	19	RAC1428	Slide knob				
	20	RAC1430	VR knob (A)				
	21	RAC1475	Operation knob (C)				
	22	RAC1479	Operation knob (A)				
	23	RAC1480	Eject knob				
	24	RAH1483	Stabilizer panel				
	25	RAH1608	REC mold (L)				
	26	RAH1609	Door pocket (L)				
	27	RAH1610	Door pocket (R)				
	28	RAH1611	REC mold				
	29	RAW1022	Counter				
	30	REB1085	Stabilizer (B)				
	31	REE-113	Remain display paper				
	32	VEC1061	Stopper				
	33	VNK1095	insulator				
	34	RAH1605	Door lens				
	35	RAH1606	Meter panel				
	36	RAH1607	Meter lens				
	37	RXX1079	Bonnet				
	38	RXX1259	Front panel assembly				
	39	BBZ20P080FMC	Screw				
	40	BBZ30P080FMC	Screw				
	41	BBZ30P100FZK	Screw				
	42	IBZ30P150FCU	Screw				
	43	FBT40P080FZK	Screw				
	44	VCZ26P060FMC	Screw				
	100		Mechanism unit				
	101		Mechanism unit				
	102		Shield case				
	103		Mechanism shield plate				
	104		Mechanism bracket				

CT-W630R

Parts List of Mechanism Unit (Deck 1)

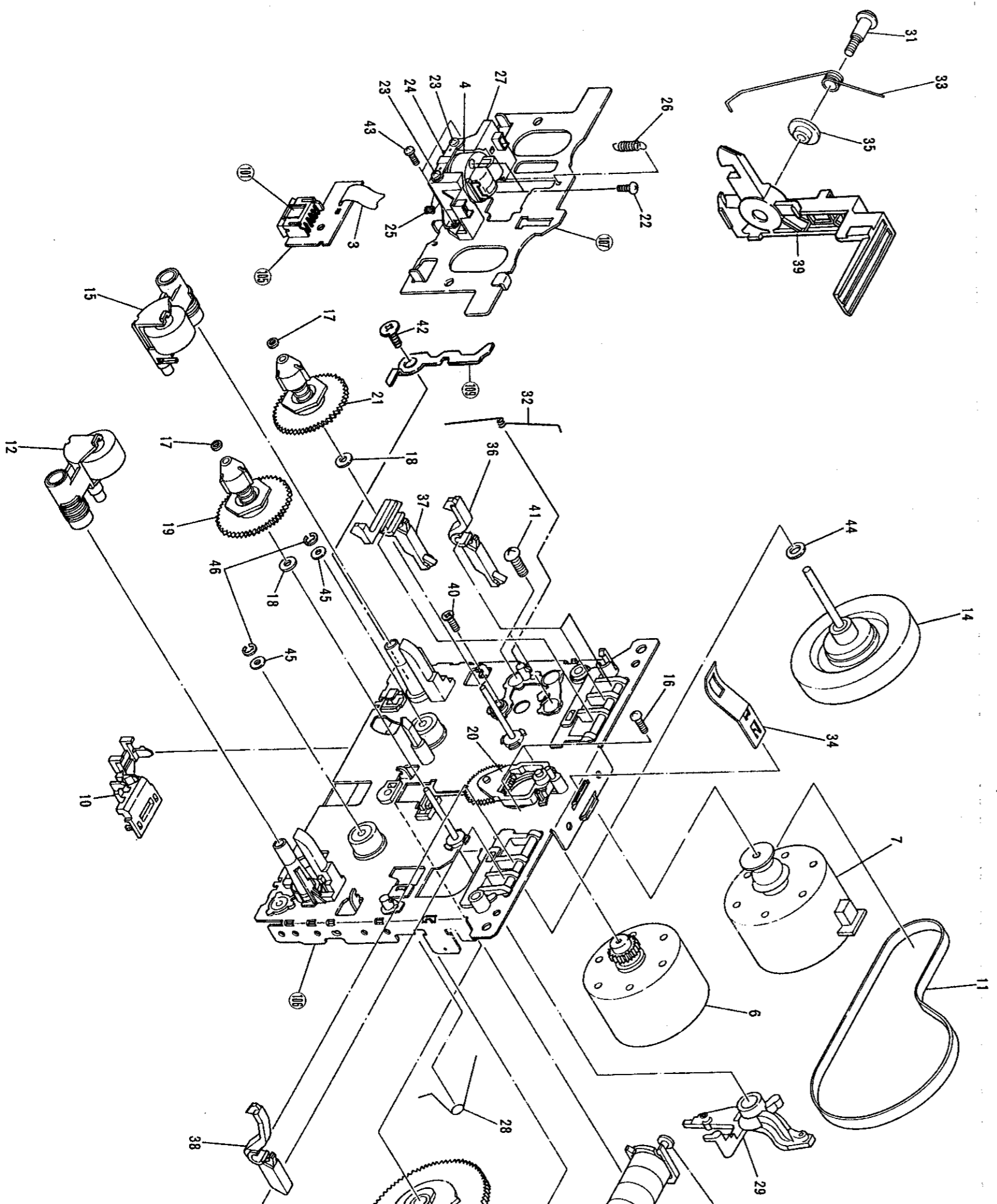
Mark	No.	Part No.	Description
	1	RLA1130	Shaft
	2	RLA1132	Plunger
	3	RNP1235	HD FPC (PB)
	4	RPB1031	PB head
	5	RSG1018	Push switch
	6	RXM1029	Motor assembly
	7	RXM1030	Motor assembly (Main)
	8	RXP1010	Solenoid
	9	SPI33534FG	Photo transistor
	10	RNK1530	Wire holder
	11	REB1112	Main belt
	12	RXA1183	Pinch roller assembly
	13	RXA1294	Flywheel assembly
	14	RXA1295	Flywheel assembly
	15	RXA1296	Pinch roller assembly (L)
	16	RBA1076	Screw
	17	RBF--057	Washer
	18	RBF1038	Washer
	19	RXA1184	TU reel assembly
	20	RXA1248	Idler assembly
	21	RXC-040	TU reel assembly
	22	PMZ14P050FNI	Screw
	23	RBA1080	Azimuth screw
	24	RBK1029	Azimuth spring
	25	RBL-085	Rotation spring
	26	RBL1003	Head base spring
	27	RXA1293	Head housing assembly
	28	RBH1239	Slide spring
	29	RNK1525	Play arm
	30	RNK1526	Cam gear
	31	RBA1078	Screw
	32	RBH1230	Eject prevention spring (R)
	33	RBH1264	Eject lever spring (R)
	34	RBK1031	Cassette hold spring
	35	RLA1146	Lever collar (B)
	36	RNK1527	REC detection lever
	37	RNK1594	Eject lever (R)
	38	RNK1625	PACK detection lever (R)
	39	PBZ30P080FMC	Screw
	40	PMZ26P050FMC	Screw
	41	RBA1048	Screw
	42	RBA1077	Screw
	43	WA26D045D025	Washer
	44	WA26D047D050	Washer
	45	YE15FUC	Washer
	100		Tripe-conductor jumper wire
	101		Connector (10P)
	102		Connector (3P)
	103		Connector (4P)
	104		P.C. board
	105		Head P.C.B
	106		Chassis assembly
	107		Head base
	108		Slide plate
	109		Eject prevention arm (R)

2.2 MECHANISM UNIT (DECK I)



2.2 MECHANISM UNIT (DECK II)

1 2 3 4



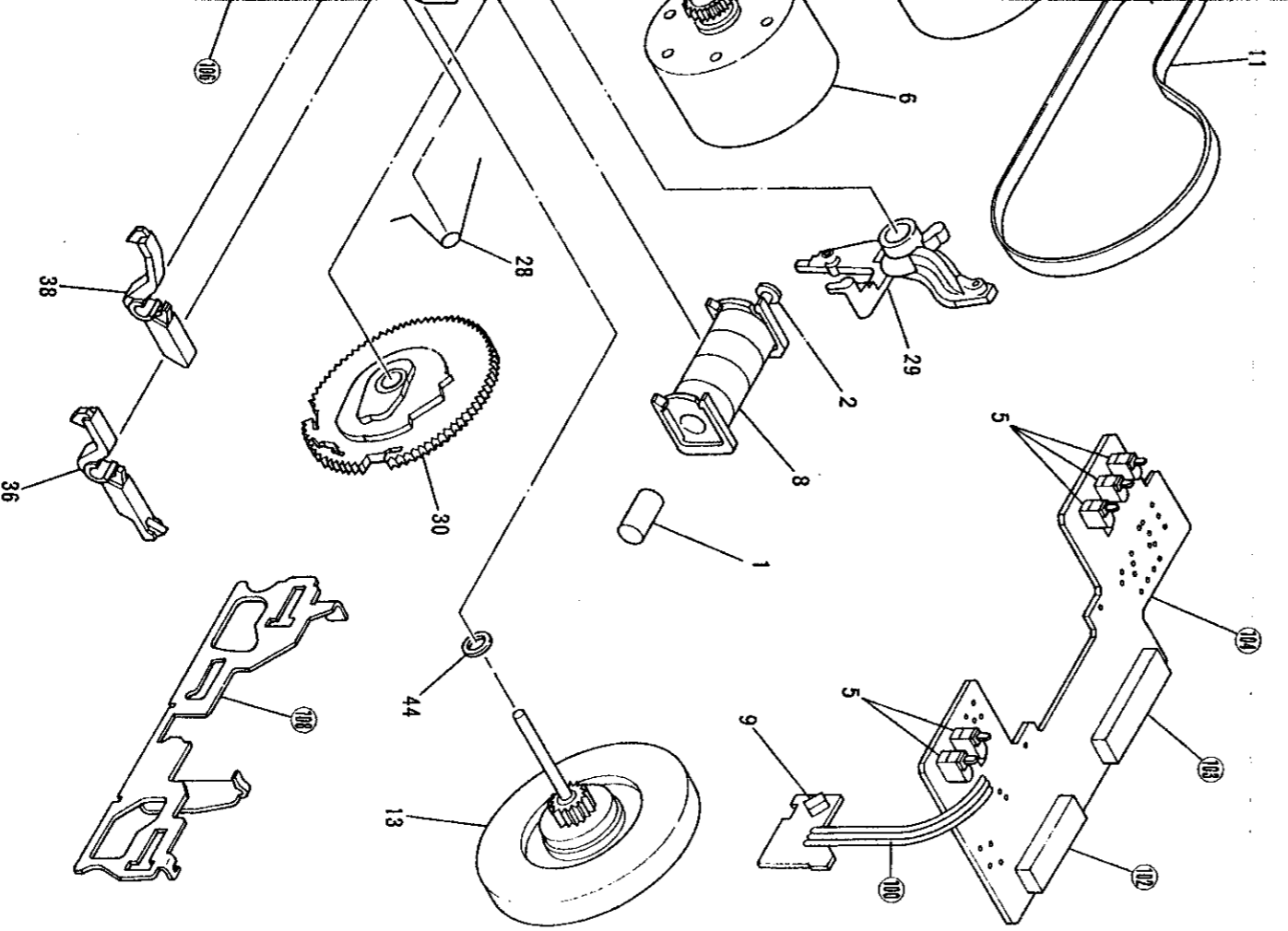
A

B

C

D

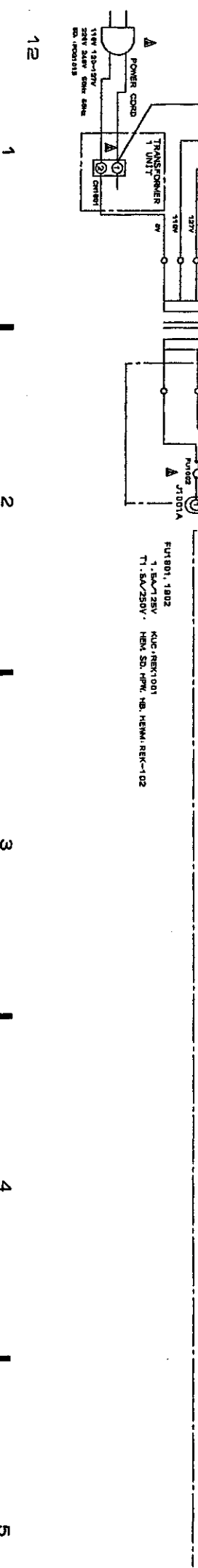
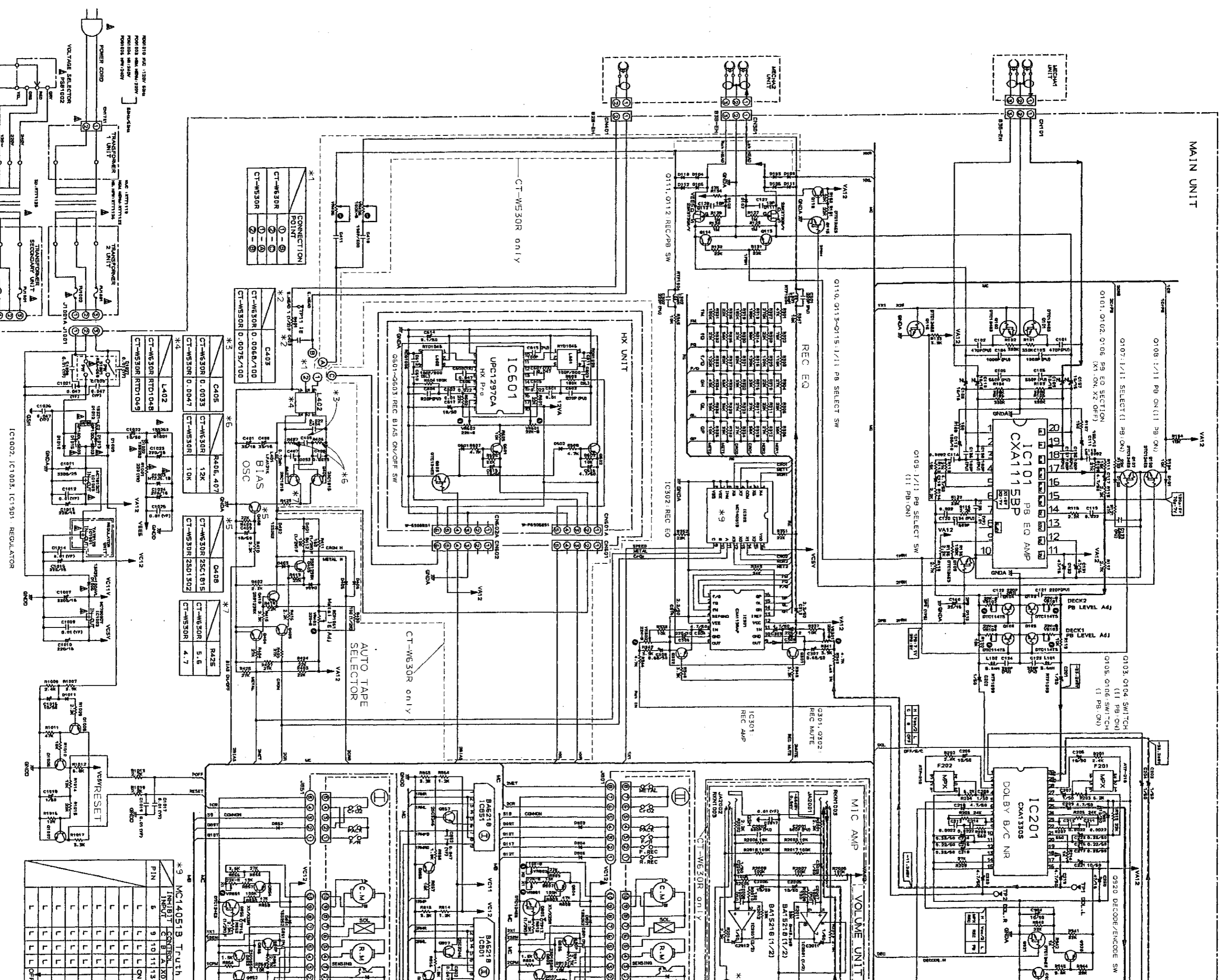
1 2 3 4

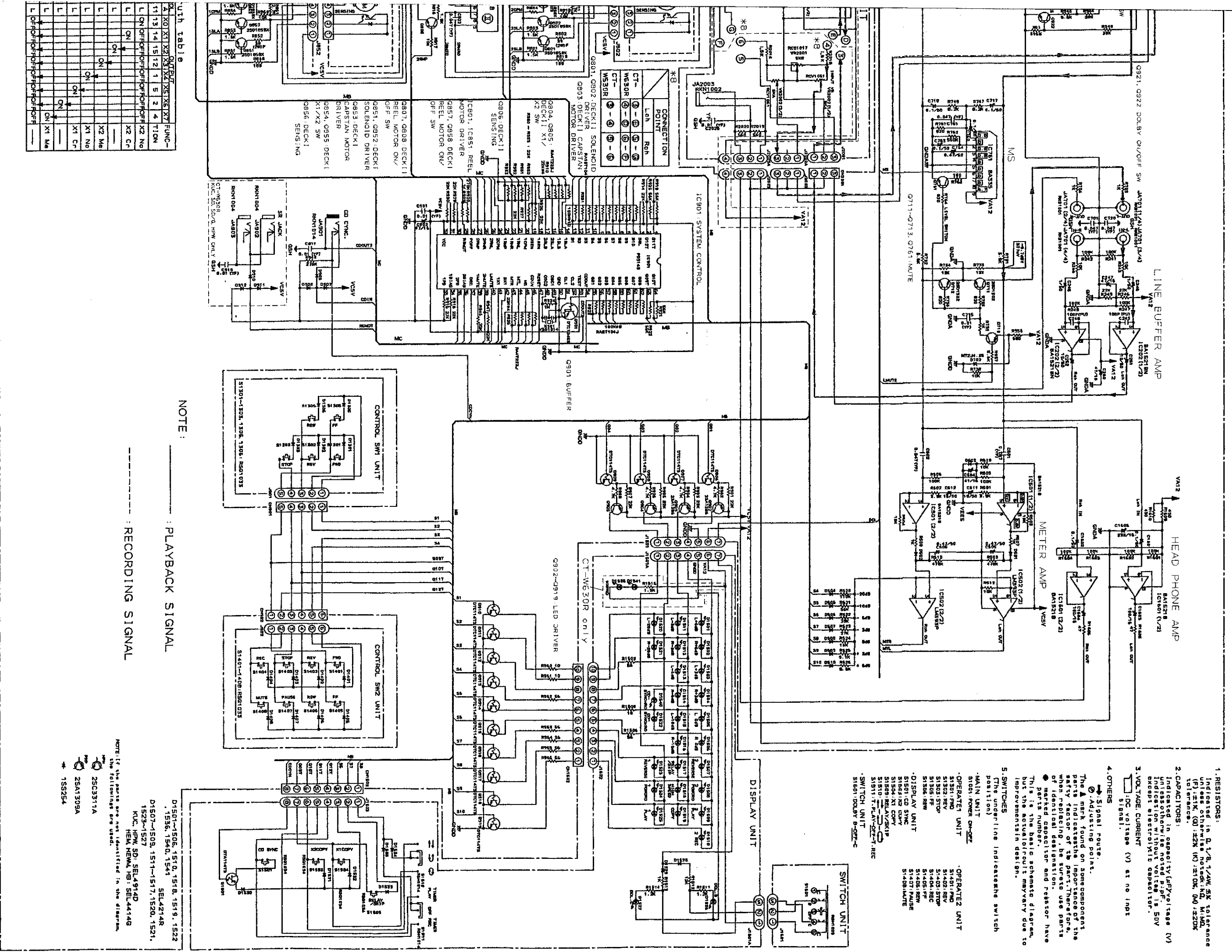


Parts List of Mechanism Unit (Deck II)

Mark	No.	Part No.	Description
A	1	RLA1130	Shaft
	2	RLA1132	Plunger
	3	RNP1232	HD FPC (R/P)
	4	RPB1030	R/P, E head
	5	RSG1018	Push switch
	6	RXM1029	Motor assembly
	7	RXM1030	Motor assembly (Main)
	8	RXP1010	Solenoid
	9	SP133534FG	Photo transistor
	10	RNK1530	Wire holder
	11	REB1112	Main belt
	12	RXA1183	Pinch roller assembly
	13	RXA1294	Flywheel assembly
	14	RXA1295	Flywheel assembly
	15	RXA1296	Pinch roller assembly (L)
	16	RBA1076	Screw
	17	RBF-057	Washer
	18	RBF1038	Washer
	19	RXA1184	TU reel assembly
	20	RXA1248	Idler assembly
	21	RXC-040	TU reel assembly
	22	PMZ14P050FNI	Screw
	23	RBA1080	Azimuth screw
	24	RBK1029	Azimuth spring
	25	RBL-085	Rotation spring
	26	RBL1003	Head base spring
	27	RXA1293	Head housing assembly
	28	RBH1239	Slide spring
	29	RNK1525	Play arm
	30	RNK1526	Cam gear
	31	RBA1078	Screw
	32	RBH1234	Eject prevention spring (L)
	33	RBH1262	Eject lever spring (L)
	34	RBK1031	Cassette hold spring
	35	RLA1146	Lever collar (B)
	36	RNK1527	REC detection lever
	37	RNK1529	Metal detection lever (L)
	38	RNK1543	PACK detection lever (P)
	39	RNK1593	Eject lever (L)
	40	PBZ30P080FMC	Screw
	41	PMZ26P050FMC	Screw
	42	RBA1048	Screw
	43	RBA1077	Screw
	44	WA26DD045D025	Washer
	45	WA26DD047D050	Washer
	46	YE15FUC	Washer
D	100		Tripe--conductor jumper wire
	101		Connector (5P)
	102		Connector (7P)
	103		Connector (10P)
	104		P.C. board
	105		Head P.C.B (R/P)
	106		Chassis assembly
	107		Head base
	108		Slide plate
	109		Eject prevention arm (L)

3. SCHEMATIC DIAGRAM





With Table

Q1	X0	X1	X2	X3	X4	X5	X6	X7	FUNC-
L	ON	OFF	OFF	OFF	OFF	OFF	OFF	OFF	TION
L	ON	OFF	OFF	OFF	OFF	OFF	OFF	OFF	X2 Ng
L	ON	OFF	OFF	OFF	OFF	OFF	OFF	OFF	X2 Cr
L	ON	OFF	OFF	OFF	OFF	OFF	OFF	OFF	X2 Mg
L	ON	OFF	OFF	OFF	OFF	OFF	OFF	OFF	X1 Ng
L	ON	OFF	OFF	OFF	OFF	OFF	OFF	OFF	X1 Cr
L	ON	OFF	OFF	OFF	OFF	OFF	OFF	OFF	X1 Mg

NOTE: _____ : PLAYBACK SIGNAL
 _____ : RECORDING SIGNAL

NOTE: If the parts are not identified in the diagram, the following are used:
 25C3311A
 25A1309A
 * 15S254

1. RESISTORS:
 Indicated in R, 1/8, 1/4W, 5% tolerance unless otherwise noted. KΩ, MΩ, Ω, and Ω/20K, Ω/200, Ω/2000, Ω/20000 tolerance.
2. CAPACITORS:
 Indicated in capacitance (μF/voltage (V) unless otherwise noted) or pF. 50V except electrolytic capacitor.
3. VOLTAGE CURRENT
 : DC voltage (V) at no load signal.
4. OTHERS:
 Δ: Signal route.
 ▲: Adjusting points.
 The mark found on some component parts indicates the importance of the parts factor of the part. Therefore, when replacing, be sure to use parts of identical specification and part number. This is the basic schematic diagram, but the actual circuit may vary due to improvements in design.
5. SWITCHES
 (The underline indicates the switch position)
 .MAIN UNIT
 .SIDE: POWER ON-OFF
 .OPERATE1 UNIT
 S1401: REV
 S1402: REV
 S1403: STOP
 S1404: REC
 S1405: FF
 S1406: F.F.
 S1407: PAUSE
 S1408: REV
 S1409: PAUSE
 S1410: REV
 .DISPLAY UNIT
 S1501: CO SYNC
 S1502: CO SYNC
 S1503: X1 COPY
 S1504: X1 COPY
 S1505: RELAY/STOP
 S1506: RELAY/STOP
 S1507: PLAY/STOP
 S1508: PLAY/STOP
 S1509: DOUBT B-CNT-C

4. P.C. BOARDS CONNECTION DIAGRAM

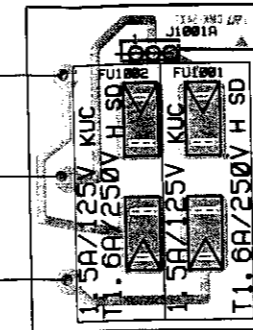
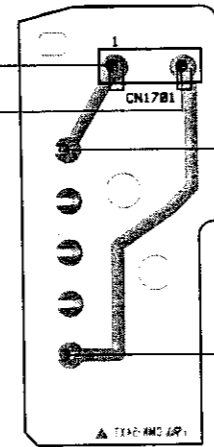
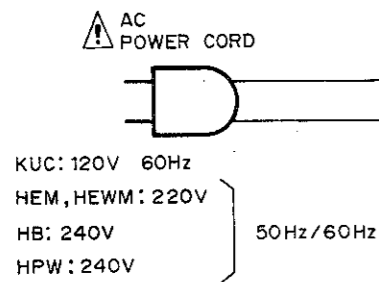
• View from component side

TRANSFORMER 1 UNIT

TRANSFORMER 2 UNIT

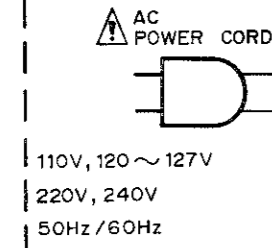
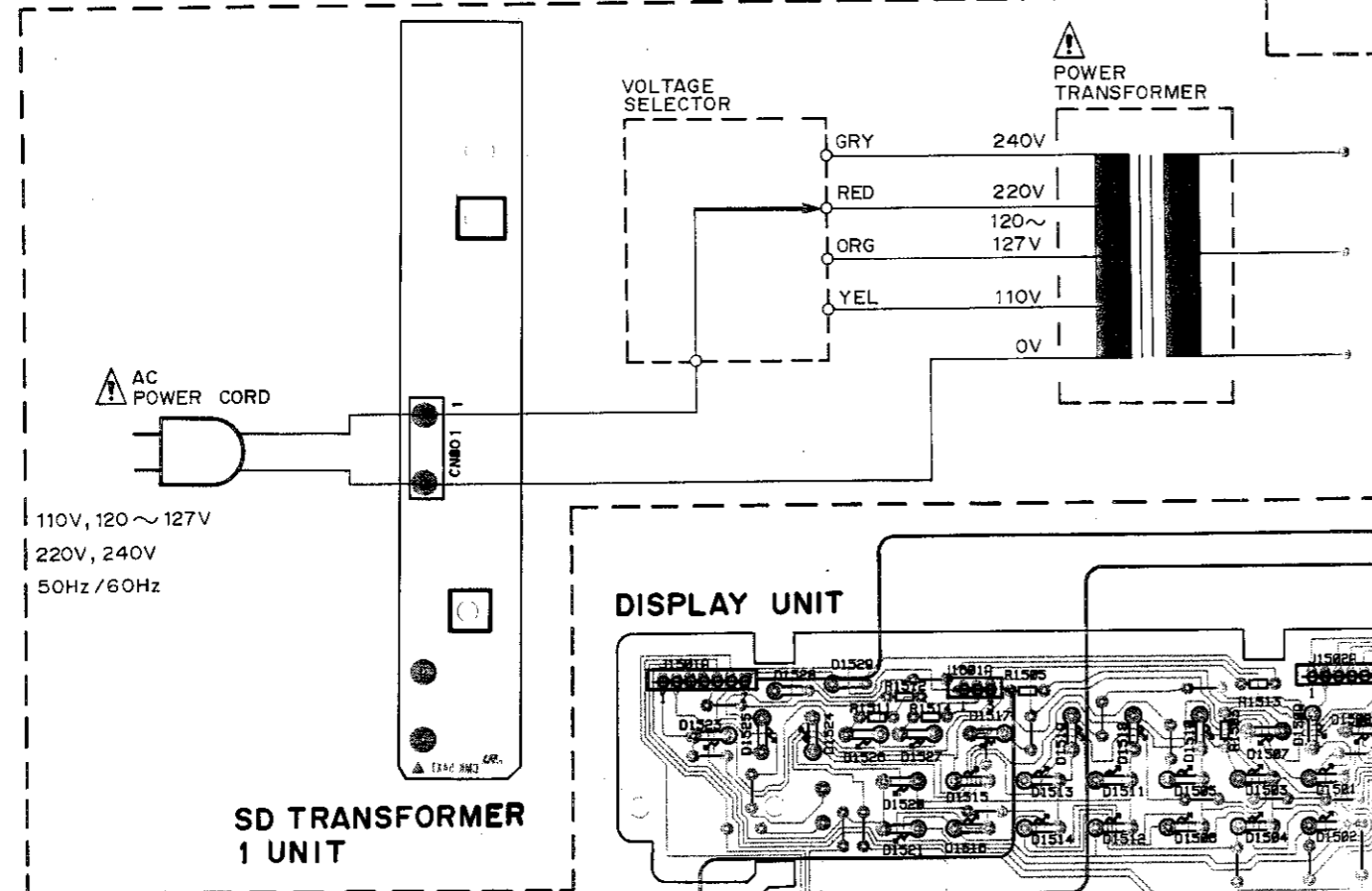
MAIN UNIT

A

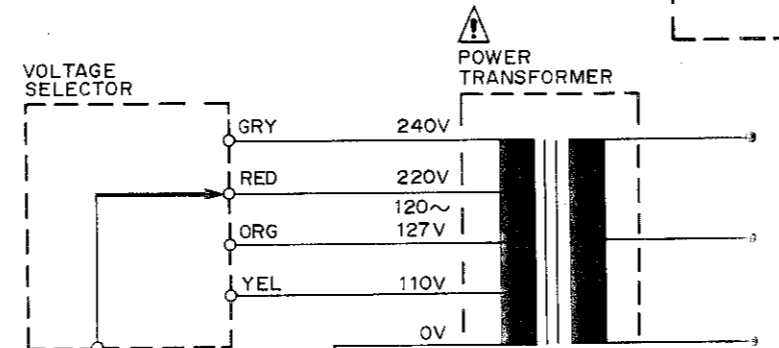


B

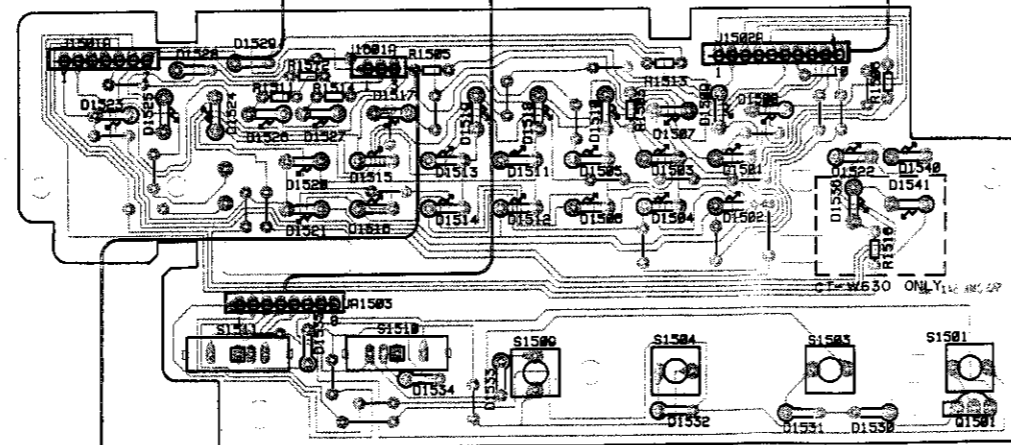
SD ONLY



110V, 120~127V
220V, 240V
50Hz/60Hz

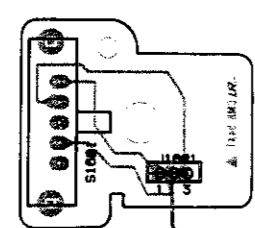


DISPLAY UNIT

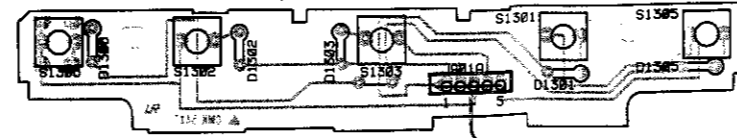


SD TRANSFORMER 1 UNIT

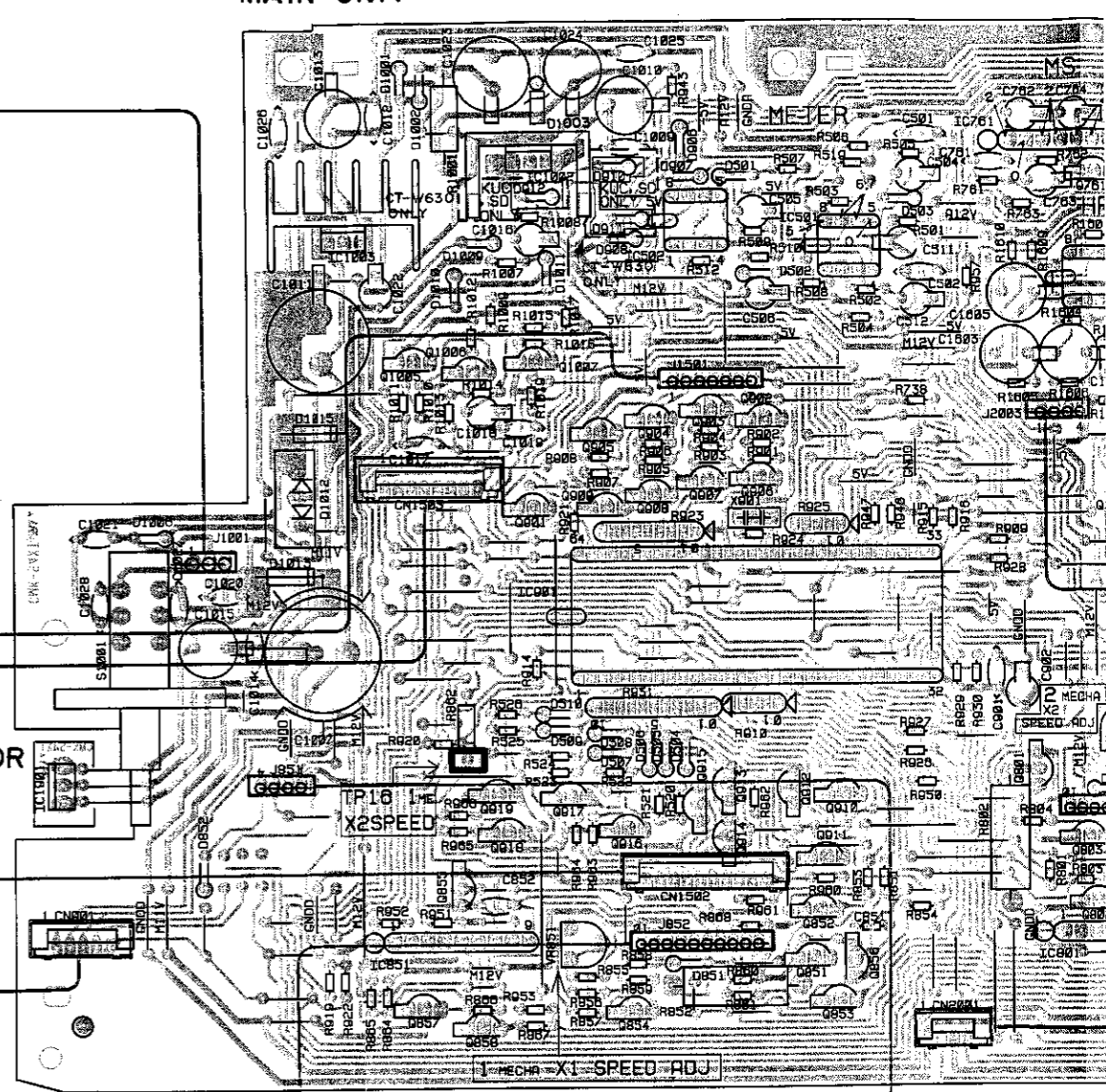
SWITCH UNIT



CONTROL SW 1 UNIT



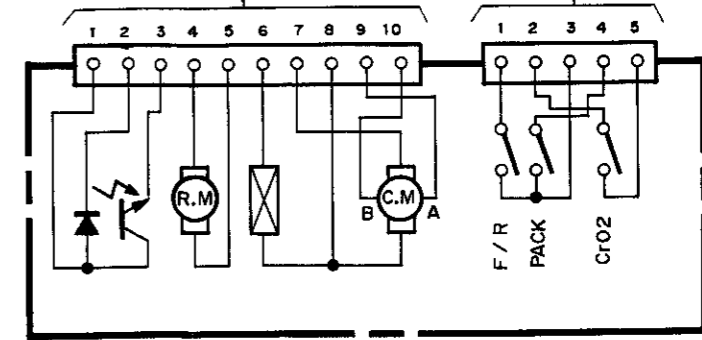
REGULATOR UNIT



C

D

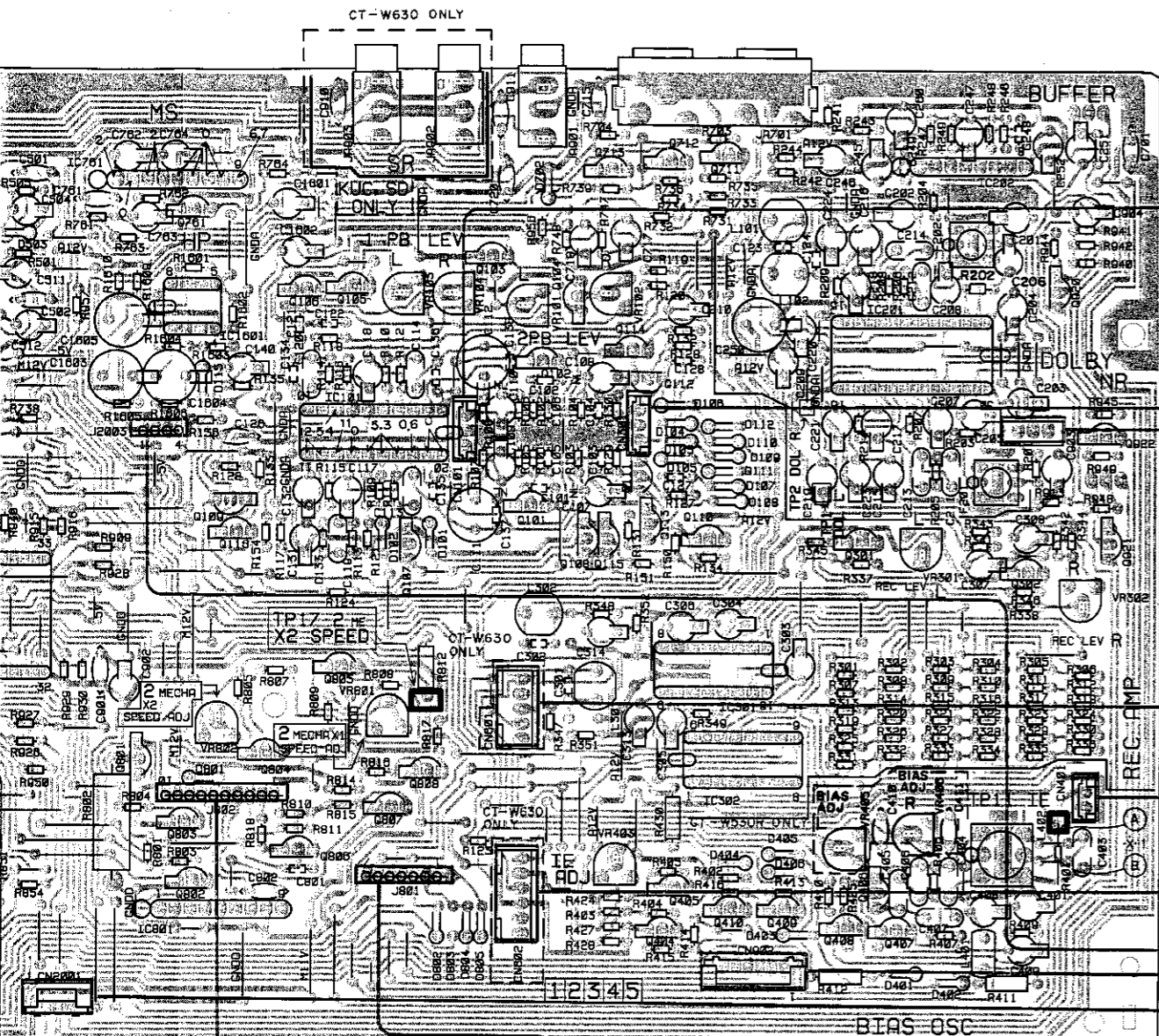
IC1901	IC1003	IC1002	IC502	IC501	IC761
	Q1005	Q1006	Q1007	Q905	Q904
	Q903	Q902	Q901	Q909	Q908
	Q907	Q906	Q919	Q917	Q915
	IC901	Q912	Q910	Q911	Q852
	Q855	Q918	Q916	Q913	Q851
	Q857	IC851	Q858	Q854	Q914
	Q853	Q856			



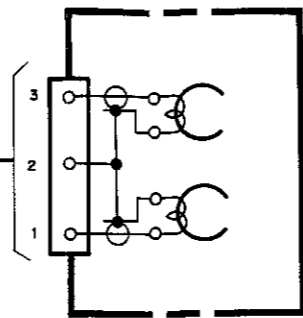
MECHA 1 UNIT



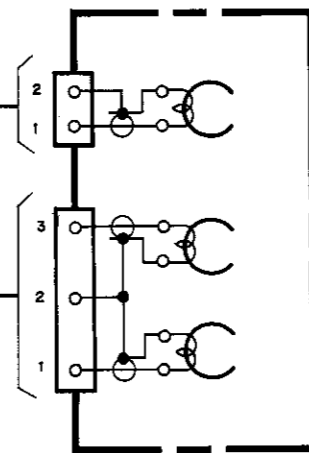
MECH



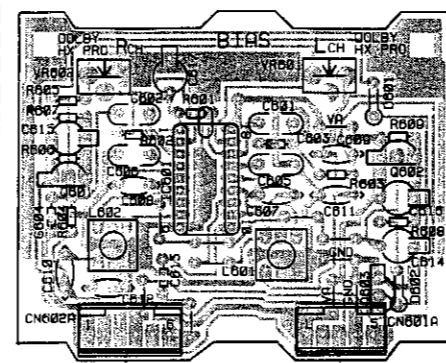
MECHA 1 UNIT



MECHA 2 UNIT



HX UNIT



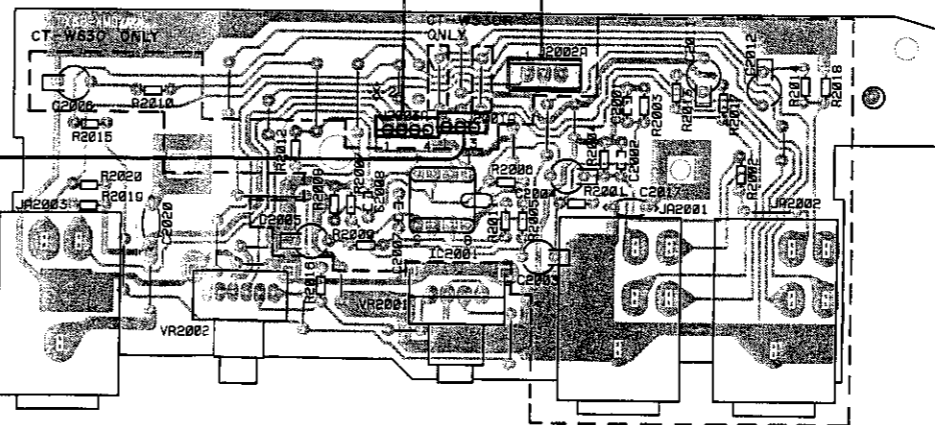
×1

JUMPER	CT-W630R	CT-W530R
(A)	USED	NOT USED
(B)	NOT USED	USED

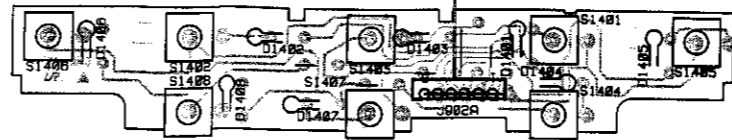
×2

	J2003 J2003A
CT-W630R	4 LEAD
CT-W530R	3 LEAD

VOLUME UNIT

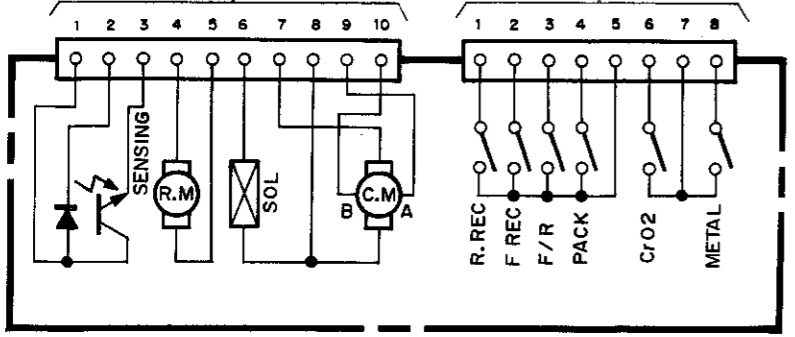


CONTROL SW 2 UNIT



VR802	VR801	VR103	VR104	VR101	VR102	VR301	VR302	
IC761	Q106	Q105	Q103	Q104, Q713	Q712	Q711	IC202	Q920
IC1601	Q761	IC101	Q102	Q114	Q112	IC301	IC201	Q922
Q109	Q116	Q107	Q101	Q111	IC302		Q302	Q921
Q801	Q804	Q805	Q808	Q108	Q115	Q113	Q110	
Q803	Q806	Q807		Q405		Q406		
Q802	IC801			Q404	Q410	Q409	Q408	Q407

310
352
353 Q856



MECHA 2 UNIT

P.C.B. pattern diagram indication	Corresponding part symbol	Part name
		Transistor
		FET
		Diode
		Zener diode
		LED
		Varactor
		Tact switch
		Inductor
		Coil
		Transformer
		Filter
		Ceramic capacitor
		Mylar capacitor
		Styrol capacitor
		Electrolytic capacitor (Non polarized)
		Electrolytic capacitor (Noiseless)
		Electrolytic capacitor (Polarized)
		Electrolytic capacitor (Polarized)
		Power capacitor
		Semi-fixed resistor
		Resistor array
		Resistor
		Resonator
		Thermistor

A

B

C

D

1. This P.C.B. connection diagram is viewed from the parts mounted side.
2. The parts which have been mounted on the board can be replaced with those shown with the corresponding wiring symbols listed in the above Table.
3. The capacitor terminal marked with shows negative terminal.
4. The diode marked with shows cathode side.
5. The transistor terminal marked with shows emitter.

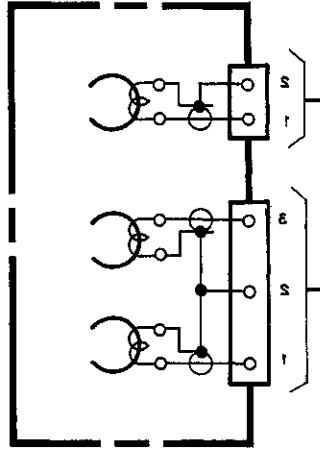
A

B

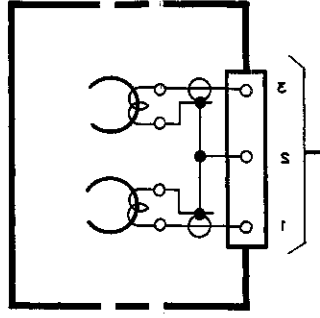
C

D

MECHA 2 UNIT



MECHA 1 UNIT

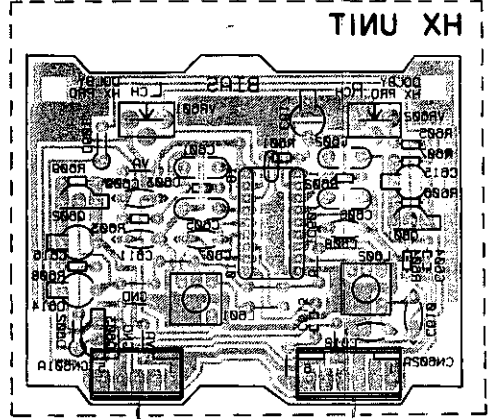


*1

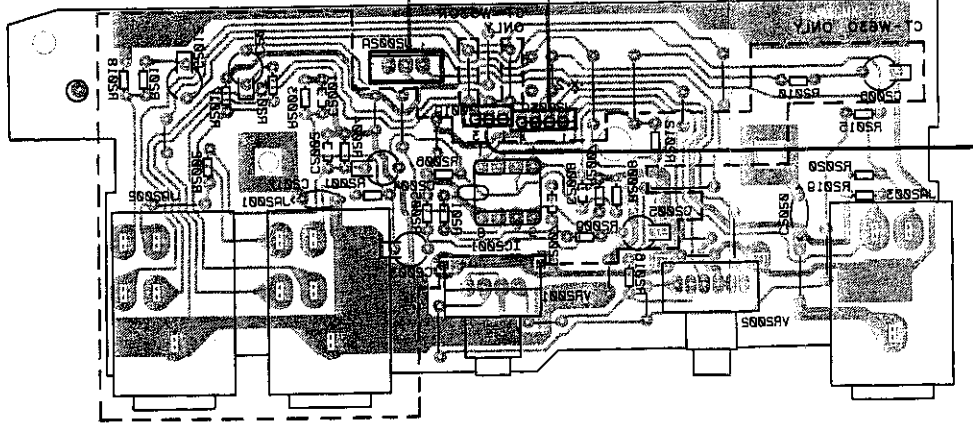
NUMBER	CT-W630R	CT-W630R
(A)	USED	NOT USED
(B)	NOT USED	USED

*S

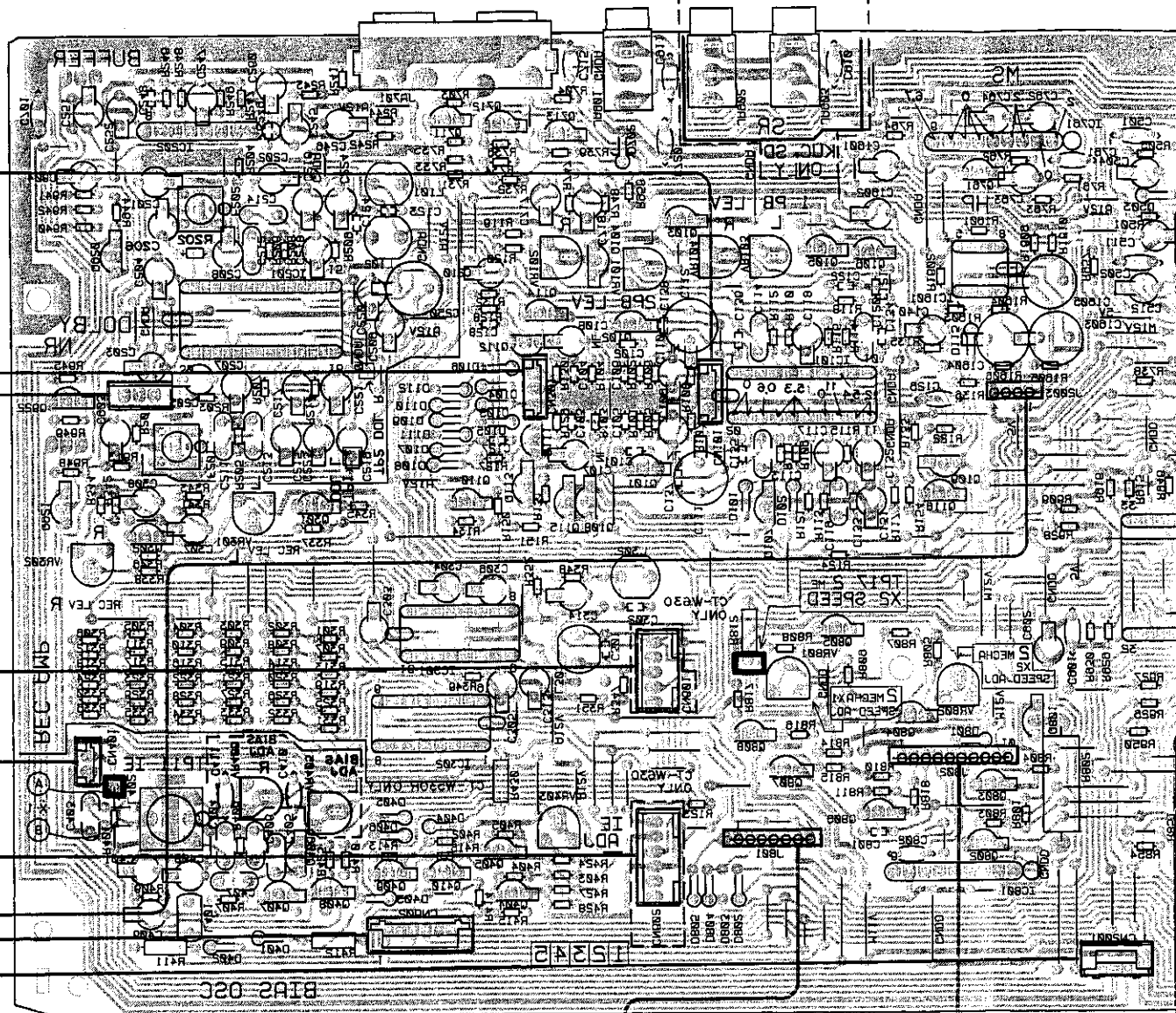
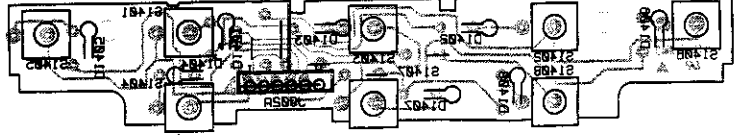
CT-W630R	3 LEAD
CT-W630R	4 LEAD
13003	13003



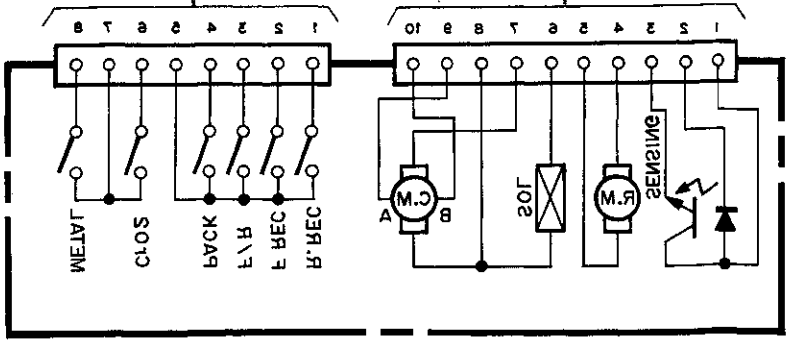
VOLUME UNIT



CONTROL SW 2 UNIT



VR805	VR801	VR403	VR301	VR305
VR803	VR802	VR402	VR408	VR303
VR801	VR804	VR401	VR406	VR302
VR802	VR808	VR404	VR404	VR304
VR804	VR805	VR405	VR405	VR305
VR805	VR806	VR406	VR406	VR306
VR806	VR807	VR407	VR407	VR307
VR807	VR808	VR408	VR408	VR308
VR808	VR809	VR409	VR409	VR309
VR809	VR810	VR410	VR410	VR310
VR810	VR811	VR411	VR411	VR311
VR811	VR812	VR412	VR412	VR312
VR812	VR813	VR413	VR413	VR313
VR813	VR814	VR414	VR414	VR314
VR814	VR815	VR415	VR415	VR315
VR815	VR816	VR416	VR416	VR316
VR816	VR817	VR417	VR417	VR317
VR817	VR818	VR418	VR418	VR318
VR818	VR819	VR419	VR419	VR319
VR819	VR820	VR420	VR420	VR320
VR820	VR821	VR421	VR421	VR321
VR821	VR822	VR422	VR422	VR322
VR822	VR823	VR423	VR423	VR323
VR823	VR824	VR424	VR424	VR324
VR824	VR825	VR425	VR425	VR325
VR825	VR826	VR426	VR426	VR326
VR826	VR827	VR427	VR427	VR327
VR827	VR828	VR428	VR428	VR328
VR828	VR829	VR429	VR429	VR329
VR829	VR830	VR430	VR430	VR330

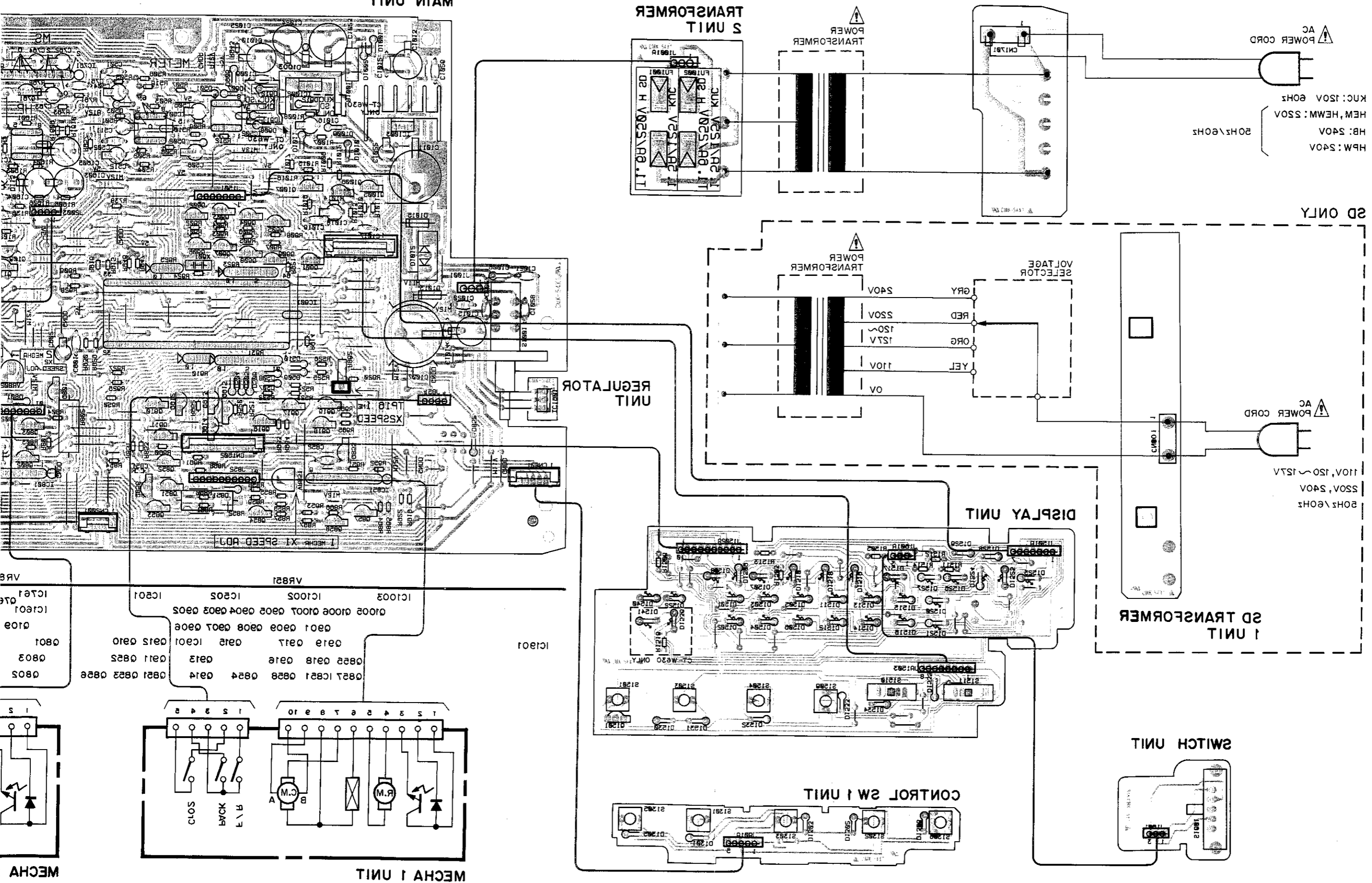


MECHA 2 UNIT

4. P.C. BOARDS CONNECTION DIAGRAM

• View from soldering side

TRANSFORMER 1 UNIT



A

B

C

D

MECHA

MECHA 1 UNIT

CONTROL SW 1 UNIT

DISPLAY UNIT

SD TRANSFORMER 1 UNIT

SWITCH UNIT

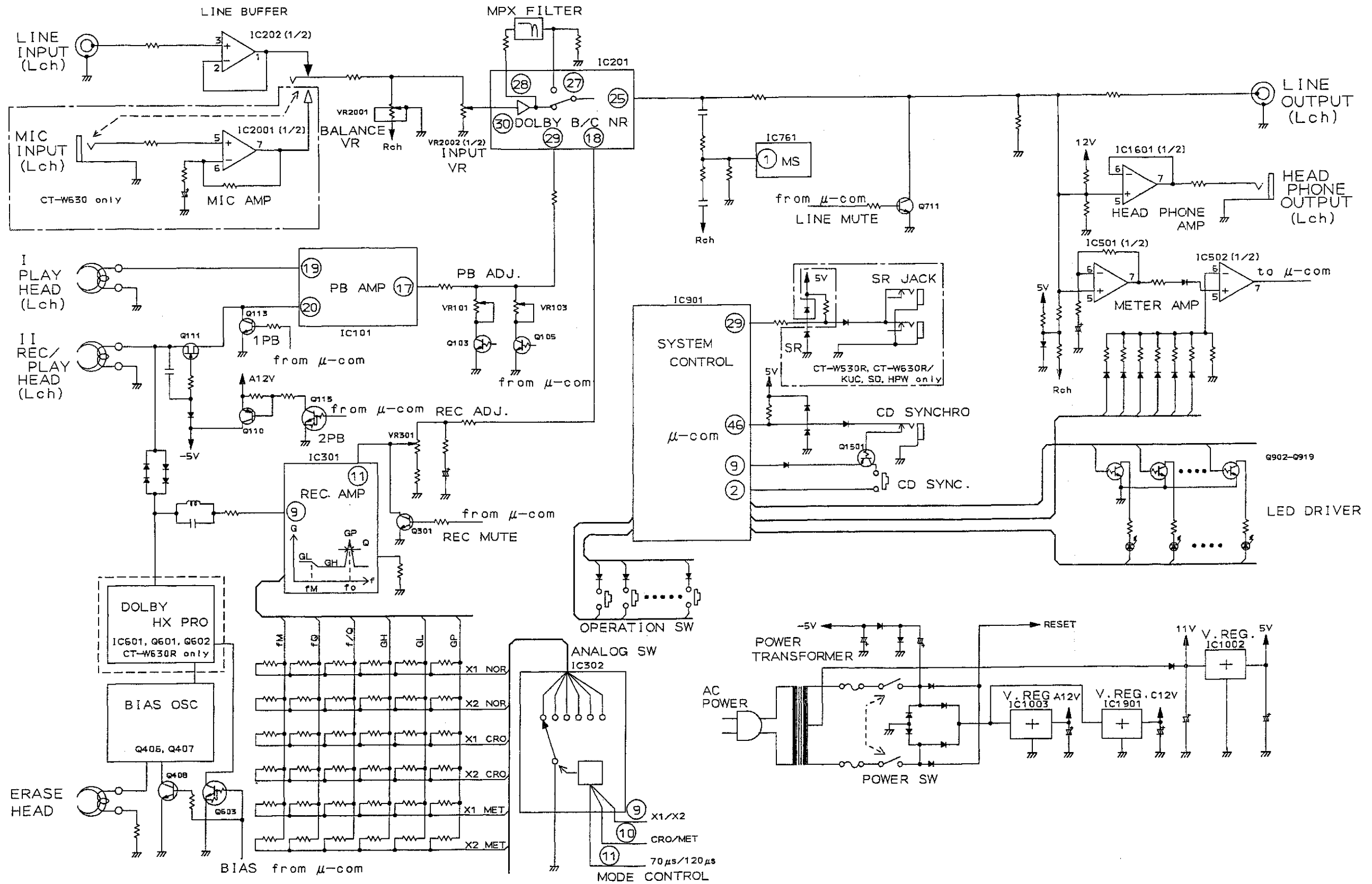
REGULATOR UNIT

TRANSFORMER 2 UNIT

MAIN UNIT

VR8	VR821	IC1003	IC1002	IC205	IC201
0805	0821 0821 0828 0824 0814	0822 0818 0816 0812 0810	0825 0818 0816 0812 0810	0825 0808 0808 0807 0805	0801
0803	0825 0818 0816 0812 0810	0822 0818 0816 0812 0810	0825 0808 0808 0807 0805	0801	0801
IC1001	IC1001	IC1001	IC1001	IC1001	IC1001
0801	0801	0801	0801	0801	0801

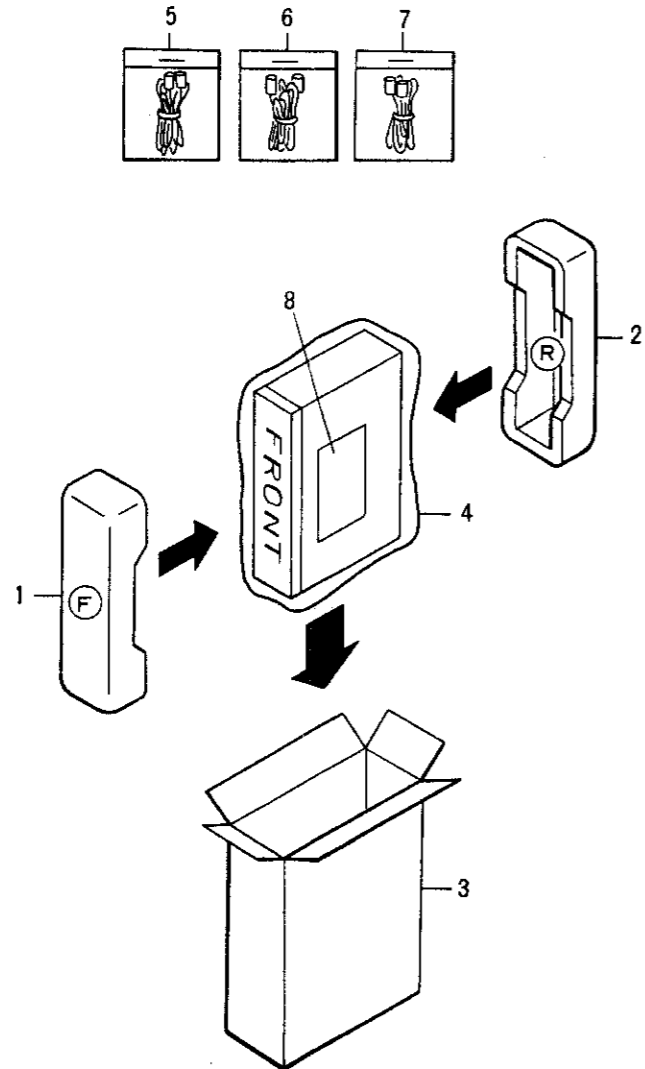
5. BLOCK DIAGRAM



6. PACKING

Parts List

Mark	No.	Part No.	Description
	1	RHA1023	Pad (A)
	2	RHA1024	Pad (B)
	3	RHG1164	Packing case
	4	RHX-034	Sheet
	5	PDE-319	Connection cord (Mini)
	6	RDE1018	Control cord
	7	RDE-010	Connection cord
	8	RRB1058	Operating instructions (English)



7. ELECTRICAL PARTS LIST

NOTES :

- Parts without part number cannot be supplied.
- Parts marked by "⊙" are not always kept in stock. Their delivery time may be longer than usual or they may be unavailable.
- The Δ mark found on some component parts indicates the importance of the safety factor of the part. Therefore, when replacing, be sure to use parts of identical designation.
- When ordering resistors, first convert resistance values into code form as shown in the following examples.

Ex.1 When there are 2 effective digits (any digit apart from 0), such as 560 ohm and 47k ohm (tolerance is shown by J=5%, and K=10%).

560 Ω	56 × 10 ¹	561	RD1/4PS	561J
47k Ω	47 × 10 ³	473	RD1/4PS	473J
0.5 Ω	0R5		RN2H	0R5K
1 Ω	010		RS1P	010K

Ex.2 When there are 3 effective digits (such as in high precision metal film resistors).

5.62k Ω	562 × 10 ¹	5621	RN1/4SR	5621F
---------	-----------------------	------	---------	-------

Miscellaneous Parts

P.C. BOARD ASSEMBLIES

Mark	Symbol & Description	Part No.	Mark	Symbol & Description	Part No.
	Main unit			IC301	CXA1198AP
	Display unit			IC201	CXA1330S
	Volume unit			IC502	LM393P
	Transformer 1 unit			IC302	MC14051B
	Transformer 2 unit		Δ	IC1002	MC7805CT
	Control SW (1) unit		Δ	IC1003	MC7812CT
	Control SW (2) unit			IC901	PD3148
	Switch unit			Q103-Q106, Q906-Q919	DTC114TS
	Regulator unit			Q101, Q102, Q107-Q109, Q115, Q116, Q805, Q855, Q901, Q921	DTC124ES
	HX unit			Q902, Q903	2SA1286

OTHERS

Mark	Symbol & Description	Part No.	Mark	Symbol & Description	Part No.
Δ	Strain relief	CM-22		Q110, Q713, Q804, Q854, Q904, Q905, Q920, Q1005	2SA1309A
Δ	AC power cord	RDG1010		Q409, Q410	2SB1238X
Δ	Fuse (1.5A)	REK1001		Q406-Q408	2SC1815
Δ	Connector assembly 3P	RKP1322		Q113, Q114, Q301, Q302, Q404, Q405, Q761, Q806, Q808, Q856, Q858, Q922, Q1006, Q1007	2SC3311A
Δ	Connector assembly 5P	RKP1323		Q711, Q712	2SD1302
Δ	Power transformer	RTT1116		Q801-Q803, Q807, Q851-Q853, Q857	2SD1858X
	PB head	RPB1031		Q111, Q112	2SK373
	Push switch	RSG1018	Δ	D1013, D1015	GP10GL-5003
	Motor assembly	RXM1029	Δ	D702	MTZJ4.3B
	Motor assembly (Main)	RXM1030	Δ	D1003	MTZJ5.1B
	Solenoid	RXP1010	Δ	D1012	1B2Z1-LC2
	Photo transistor	SPI33534FG	Δ	D1006	1SR35-100AVL
	R/P, E head	RPB1030		D402, D801, D851	1SS252
			Δ	D1001, D1002	1SS252
			Δ	D101-D112, D115, D401, D403-D406, D501-D510, D802, D804, D805, D852, D906-D908, D910-D912, D1009-D1011	1SS254

Main Unit

SEMICONDUCTORS

Mark	Symbol & Description	Part No.
	IC501, IC1601	BA15218
	IC202	BA15218N
	IC761	BA335
	IC801, IC851	BA6218
	IC101	CXA1115BP

SWITCH

Mark	Symbol & Description	Part No.
Δ	S1001 Power switch	RSA-069

COILS • FILTERS

Mark	Symbol & Description	Part No.
	F201, F202 Dolby filter	ATF-210
	L401 Radial inductor	LFA121K
	L402 Oscillator coil	RTD1048
	L301, L302 Coil (10mH)	RTF1004
	L101, L102 Coil (5.6mH)	RTF1099

CAPACITORS

Mark	Symbol & Description	Part No.
	C127, C128	CCPUSL100J50
	C107-C110	CEANL100M16
	C717, C718, C762, C763, C1601, C1602	CEASR10M50
	C215, C216	CEASR22M50
	C217, C218, C223, C224	CEASR33M50
	C505, C506, C764	CEASR47M50
	C307, C308	CEASR68M50
	C201-C204, C207, C208, C245, C246, C1018	CEAS010M50
	C205, C206, C221, C251, C252, C409, C511, C512, C903, C904, C1016, C1022	CEAS100M50
	C111, C112	CEAS101M10
	C1603, C1604	CEAS101M16
	C313, C314	CEAS2R2M50
	C140	CEAS220M16
	C305, C306	CEAS221M10
	C1010, C1013, C1015, C1023, C1024	CEAS221M16
	C1007	CEAS332M16
	C401, C408	CEAS330M16
	C1605	CEAS331M16
	C1011	CEAS332M25
	C117, C118, C209, C210, C219, C220, C303, C304	CEAS4R7M50
	C131, C132, C247, C250, C260, C504, C902	CEAS470M16
	C211-C214	CFTXA222J50
	C119, C120, C404	CFTXA223J50
	C405-C407	CFTXA332J50
	C113, C114	CFTXA822J50
	C126, C715, C901, C910, C911, C1009, C1012, C1014, C1017, C1019, C1025, C1027, C1028	CKCYF103Z50
	C501, C502, C701, C720, C761, C802, C852, C1020, C1021, C1026	CKCYF473Z50
	C135-C138, C248, C249	CKPUYB101K50
	C103, C104	CKPUYB102K50
	C121, C122, C301, C302	CKPUYB221K50
	C123, C124	CKPUYB391K50
	C101, C102	CKPUYB471K50
	C105, C106	CKPUYB561K50
	C133, C134, C801, C851	CKPUYB681K50
	C403	CQPA682J100

RESISTORS

Mark	Symbol & Description	Part No.
	R931	RA10T104J
	R910, R925	RA4T223J
	R923	RA8T104J
	VR101-VR104, VR301, VR302	RCP1046
	Semi-fixed	
	VR802	RCP1054
	VR403	RCP1061
△	R1001	RS1LF221J
	R802, R852	RS2LMF390J
	VR801, VR851 Semi-fixed (22k)	VRTG6VS223
	R401, R411, R412, R430, R812, R862	RD½LF□□□J
	Other resistors	RD ¼ PM□□□J

OTHERS

Mark	Symbol & Description	Part No.
	JA701 Pin jack 4P	RKB1001
	JA902, JA903	RKN1004
	Remote control jack	
	JA901 Mini jack	RKN1014
	X901 Ceramic resonator	VSS1014

Display Unit

SEMICONDUCTORS

Mark	Symbol & Description	Part No.
	Q1501	DTA114TS
	D1501-D1506, D1510, D1518, D1519, D1522, D1536, D1540, D1541	SEL4214R
	D1507-D1509, D1511-D1517, D1520, D1521, D1523-D1527	SEL4914D-X
	D1528-D1535	1SS254

SWITCHES

Mark	Symbol & Description	Part No.
	S1501, S1503, S1504, S1509	RSG1034
	Tact switch	
	S1510, S1511 Slide switch	RSH1014

RESISTORS

Mark	Symbol & Description	Part No.
	All resistors	RD ¼ PM□□□J

Volume Unit

SEMICONDUCTOR

Mark	Symbol & Description	Part No.
	IC2001	BA15218

CAPACITORS

Mark	Symbol & Description	Part No.
	C2003, C2004, C2011, C2012	CEAS010M50
	C2005, C2006	CEAS100M50
	C2017, C2020	CKCYF103Z50
	C2007, C2008	CKPUYB101K50
	C2001, C2002	CKPUYB681K50

RESISTORS

Mark	Symbol & Description	Part No.
	VR2001 Variable resistor (5k Ω)	RCS1017
	VR2002 Variable resistor (5kA)	RCV1061
	Other resistors	RD $\frac{1}{2}$ PM <input type="checkbox"/> <input type="checkbox"/> <input type="checkbox"/> J

OTHERS

Mark	Symbol & Description	Part No.
	J2002 Head phone jack	RKN1002
	JA2001, JA2002 Mic jack	RKN1003

Transformer 1 Unit

There is no supply part in this unit.

Transformer 2 Unit

There is no supply part in this unit.

Control SW (1) Unit

SEMICONDUCTORS

Mark	Symbol & Description	Part No.
	D1301-D1303, D1305, D1306	1SS254

SWITCHES

Mark	Symbol & Description	Part No.
	S1301-S1303, S1305, S1306 Tact switch	RSG1033

Control SW (2) Unit

SEMICONDUCTORS

Mark	Symbol & Description	Part No.
	D1401-D1408	1SS254

SWITCHES

Mark	Symbol & Description	Part No.
	S1401-S1408 Tact switch	RSG1033

Switch Unit

SWITCH

Mark	Symbol & Description	Part No.
	S1601 Slide switch	RSH1029

Regulator Unit

SEMICONDUCTOR

Mark	Symbol & Description	Part No.
Δ	IC1901	TA7812S

HX Unit

SEMICONDUCTORS

Mark	Symbol & Description	Part No.
	IC601	UPC1297CA
	Q603	DTC124ES
	Q601, Q602	2SA1309A
	D601, D602	1SS254

COILS

Mark	Symbol & Description	Part No.
	L601, L602 Step-up coil	RTD1046

CAPACITORS

Mark	Symbol & Description	Part No.
	C609, C610	CCCSL101K500
	C614	CEASR10M50
	C615, C617	CEAS100M50
	C616	CEAS4R7M50
	C601, C602	CFTXA103J50
	C605, C606	CFTXA223J50
	C607, C608	CGCYX473K25
	C613	CKPUYB101K50
	C603, C604	CKPUYB821K50
	C611, C612 (430P/500)	RCG1005

RESISTORS

Mark	Symbol & Description	Part No.
	VR601, VR602 Semi-fixed (22k)	VRTB6HS223
	Other resistors	RD $\frac{1}{2}$ PM <input type="checkbox"/> <input type="checkbox"/> <input type="checkbox"/> J

8. ADJUSTMENTS

8.1 MECHANICAL ADJUSTMENT

1. Tape Speed Adjustment and Check							
No.	Deck	Mode	Test tape	Adjusting points	Specifications/Ratings (playback frequency)	Remarks	
1	I	Normal speed PLAY	STD-301 (3 kHz)	After playing back for 1 minute, ground TP16.			
2		Double speed PLAY		check	6000 Hz±600 Hz		
3	II	Normal speed PLAY		After checking, disconnect TP16 from ground.			
4		Double speed PLAY		After playing back for 1 minute, ground TP17.			
5	II	Normal speed PLAY		VR802	Within±10 Hz of step 2 (deck I) check value.		
6		Double speed PLAY		After checking, disconnect TP17 from ground.			
7		Normal speed PLAY		VR801	3000 Hz±5 Hz		
8	I	Normal speed PLAY		VR851	Within ±5 Hz of step 7 (deck II) adjustment value.		

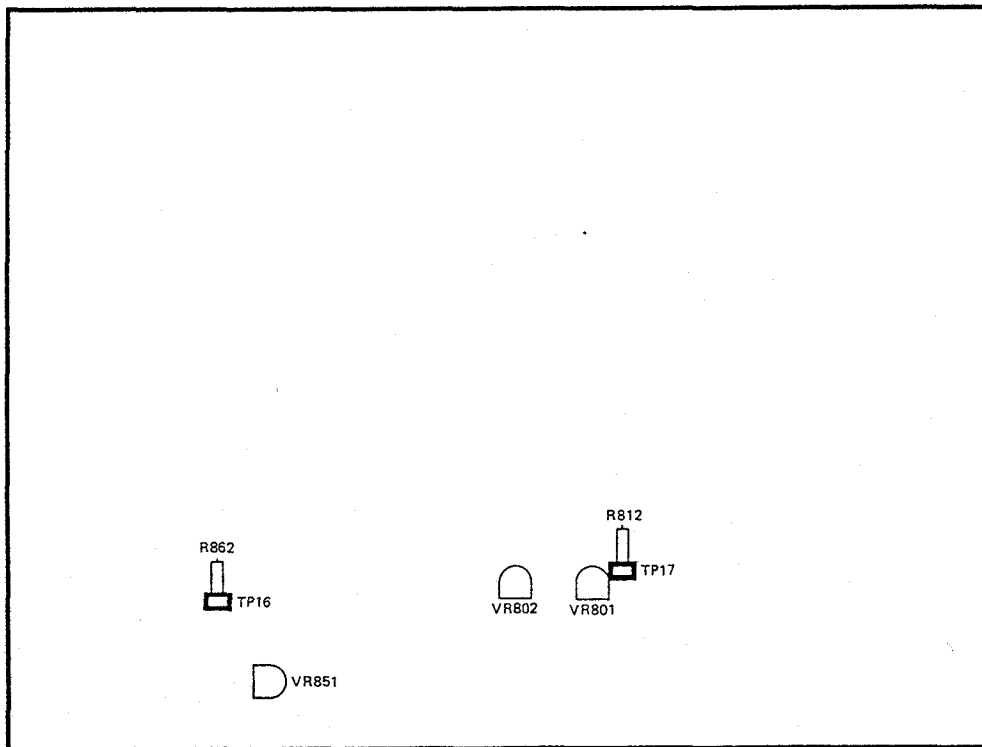


Fig. 8-1 Adjusting Points

8.2 ELECTRICAL ADJUSTMENTS

Adjustment Conditions

1. The mechanical adjustments must be completed first.
2. The head must be cleaned and demagnetized.
3. Turn power on allow the deck to warm up for at least a few minutes before commencing any electrical adjustments.
4. The reference signal is 0dBv=1Vrms.
5. Connect a 50 kΩ (or between 47k to 52 kΩ) load resistance to the OUTPUT terminals.
6. Unless otherwise specified, the switches listed below are left in the positions indicated.

DOLBY NR : OFF
 TAPE SELECTOR : NORM

Test Tapes

- STD-331B : Playback adjustments
 (See Fig. 8-2)
- STD-630 : NORMAL blank tape
 STD-620 : CrO₂ blank tape
 STD-610 : METAL blank tape

List of Adjustments

Playback sections

1. Head azimuth adjustment.
2. Playback level adjustment.

Recording sections

1. Bias oscillator adjustment.
2. Erase current adjustment.
3. Recording bias adjustment.
4. Recording level adjustment.
5. Level meter check.

NOTE: This unit has an automatic tape selection feature.

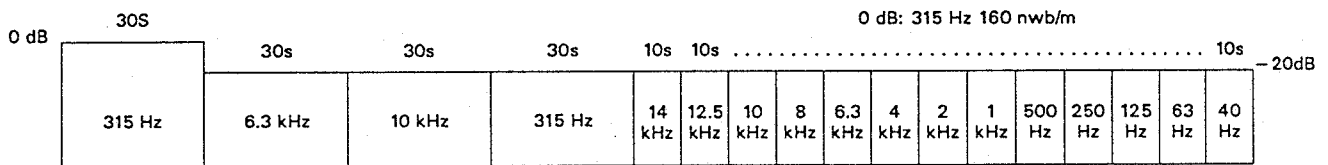


Fig. 8-2 Constants of the test tape STD-331B

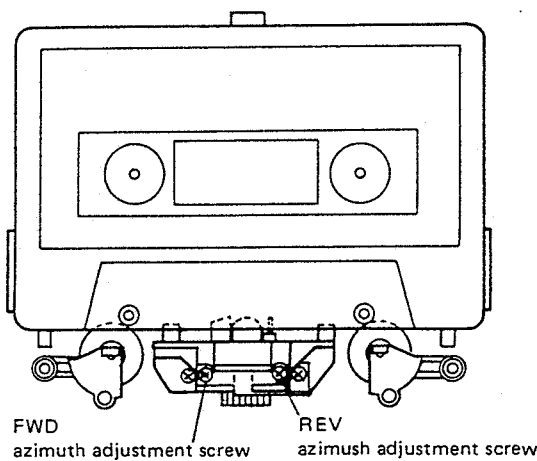


Fig. 8-3 Head azimuth adjustment

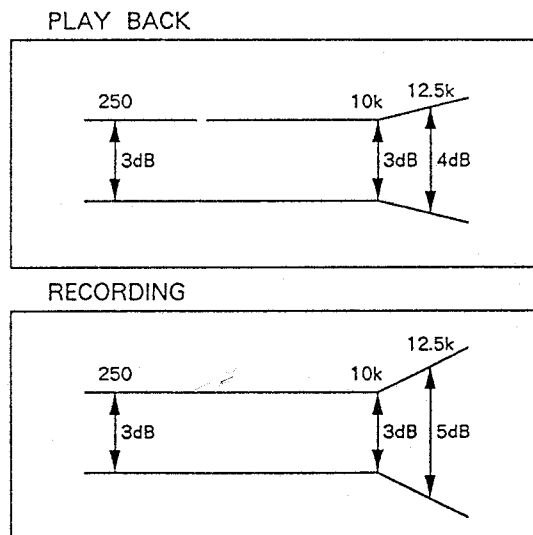


Fig. 8-4 Frequency response zone

PLAYBACK SECTION

1. Head Azimuth Adjustment

• Turn VR103, VR104 (Deck I) or VR101, VR102 (Deck II) to mechanical center positions.

No.	Mode	Input signal & test tape	Adjustment location	Measuring location	Adjustment value	Remarks
1.	PLAY	Play the 10 kHz/-20 dB section of STD-331B test tape.	Head azimuth adjustment screw. (See Fig. 8-3)	LINE OUT	Maximum playback signal level.	
2.	STOP	Lock the screw with screw lock after completing adjustment.				

2. Playback level Adjustment

• This adjustment determines the DOLBY NR level, and must be performed with great care.

No.	Mode	Input signal & test tape	Adjustment location	Measuring location	Adjustment value	Remarks
1.	PLAY	Play the 315 Hz/0 dB section of the STD-331B test tape.	Deck I VR103 (Lch) VR104 (Rch) Deck II VR101 (Lch) VR102 (Rch)	TP. 1 (Lch) TP. 2 (Rch)	-10.7 dBv	

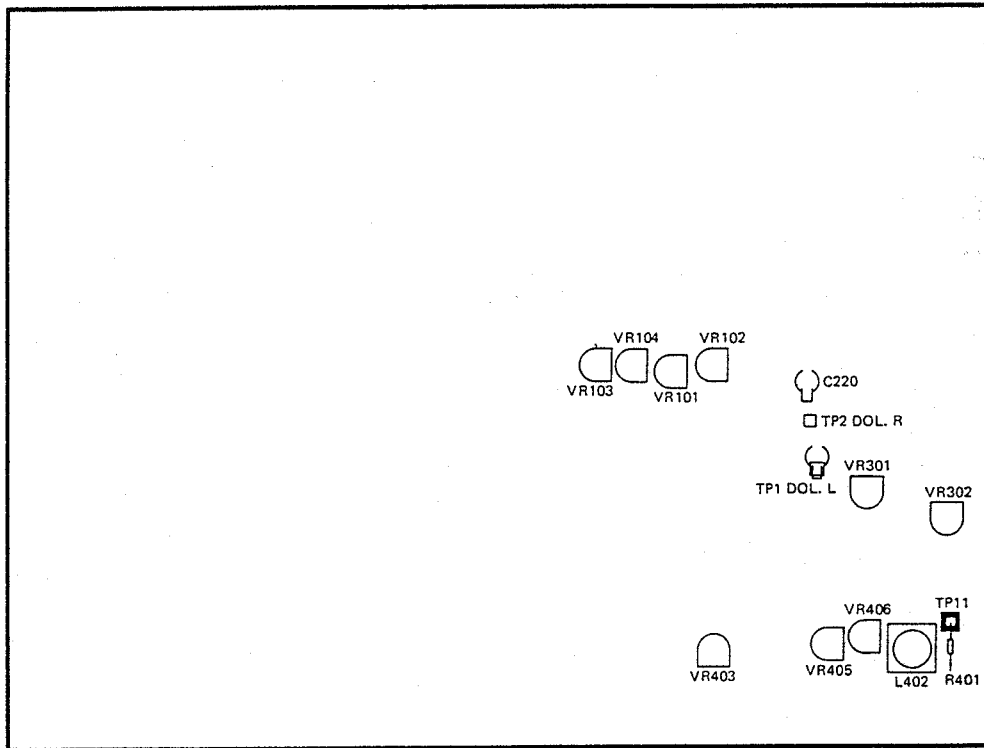


Fig. 8-5 Adjusting points

RECORDING SECTION

1. Bias Oscillator Adjustment

No.	Mode	Input signal & test tape	Adjustment location	Measuring location	Adjustment value	Remarks
1.	REC	Load the STD-610 test tape with no input signal.	Deck II L 402	TP. 11	105 kHz ± 0.3 kHz	

2. Erase Current Adjustment

No.	Mode	Input signal & test tape	Adjustment location	Measuring location	Adjustment value	Remarks
1.	REC	Load the STD-610 test tape with no input signal.	Deck II VR403	TP. 11	165 mV AC	

3. Recording Bias Adjustment

• After the adjustment, caution should be exercised so as not to become under bias by checking the distortion rate.

No.	Mode	Input signal & test tape	Adjustment location	Measuring location	Adjustment value	Remarks
1.	STOP	Set the TAPE SELECTOR switch to the NORM position.				
2.	REC	Record the 315 Hz and 6.3 kHz signals at -20 dBv input level and playback.	CT-W630R CT-W530R	VR601 (Lch) VR602 (Rch) VR405 (Lch) VR406 (Rch)	LINE OUT	Repeatedly record, playback and adjust so that the playback level of 6.3 kHz signal becomes +0.5 dB ± 0.5 dB when compared with the 315 Hz signal.

4. Recording Level Adjustment

No.	Mode	Input signal & test tape	Adjustment location	Measuring location	Adjustment value	Remarks
1.	STOP	Set the TAPE SELECTOR switch to the NORM position.				
2.	REC PAUSE	Apply a 315 Hz/0 dBv signal to the line input terminals, load the STD-630 test tape.	Rec Level control volume	TP. 1 (Lch) TP. 2 (Rch)	-11.2 dBv	
3.	STOP	Set the DOLBY NR switch to the ON position. (DOLBY B)				
4.	REC/PLAY	Record the above signal onto the STD-630 test tape, and playback.	Deck II	VR301 (Lch) VR302 (Rch)	TP. 1 (Lch) TP. 2 (Rch)	Repeatedly record, playback and adjust so that the playback signal level becomes -11.2 dB.
5.	STOP	Set the TAPE SELECTOR switch to the CrO2 position.				
6.	REC/PLAY	Record the above signal onto the STD-620 test tape, and playback.	Check	TP. 1 (Lch) TP. 2 (Rch)	-11.2 dBv ± 1.5 dB	
7.	STOP	Set the TAPE SELECTOR switch to the METAL position.				
8.	REC/PLAY	Record the above signal onto the STD-610 test tape, and playback.	Check	TP. 1 (Lch) TP. 2 (Rch)	-11.2 dBv ± 1.5 dB	

5. Level Meter Check

No.	Mode	Input signal & test tape	Adjustment location	Measuring location	Adjustment value	Remarks
1.	REC PAUSE	Apply a 315 Hz/-10 dBv (316 mV) signal to the Line Input terminals.	Rec Level control volume	TP. 1 (Lch) TP. 2 (Rch)		Check that the level meters "0 dB" light up within -11.2 dBv ± 2 dB of the signal output level.

9. FOR CT-W630R/HEM, HB, HPW AND SD TYPES

NOTES :

- Parts without part number cannot be supplied.
- The Δ mark found on some component parts indicates the importance of the safety factor of the part. Therefore, when replacing, be sure to use parts of identical designation.
- Parts marked by "⊙" are not always kept in stock. Their delivery time may be longer than usual or they may be unavailable.

The CT-W630R/HEM, HB, HPW and SD types are the same as the CT-W630R/KUC type with the exception of the following sections.

Mark	Symbol & Description	Part No.					Remarks
		CT-W630R/KUC type	CT-W630R/HEM type	CT-W630R/HB type	CT-W630R/HPW type	CT-W630R/SD type	
	Main unit	Non supply	Non supply	Non supply	Non supply	Non supply	
	Display unit	Non supply	Non supply	Non supply	Non supply	Non supply	
	Transformer 1 unit	Non supply	Non supply	Non supply	Non supply	Non supply	
Δ	Strain relief	CM-22	CM-22B	CM-22B	CM-22B	CM-22B	
Δ	AC Power cord	RDG1010	PDG1003	PDG1004	PDG1006	PDG1013	
Δ	FU1801, FU1802 Fuse (1.5A/125V)	REK1001	
Δ	FU1801, FU1802 Fuse (T1.6A/250V)	REK-102	REK-102	REK-102	REK-102	
Δ	Power transformer (120V)	RTT1116	
Δ	Power transformer (220/240V)	RTT1123	RTT1124	RTT1124	
Δ	Power transformer (110/120-127/220/ 240V)	RTT1125	
Δ	Voltage selector switch	PSB1002	
	Front panel assembly	RXX1259	RXX1261	RXX1261	RXX1259	RXX1259	
	Connection cord (Mini)	PDE-319	PDE-319	PDE-319	
	Packing case	RHG1164	RHG1173	RHG1167	RHG1167	RHG1167	
	Operating instructions (French, German, Italian, Dutch, Swedish, Spanish, Portuguese)	RRD1068	

MAIN UNIT

The main units of CT-W630R/HEM and HB types are the same as the main unit of CT-W630R/KUC, HPW and SD types with the exception of the following sections.

Mark	Symbol & Description	Part No.		Remarks
		CT-W630R/KUC, HPW and SD types	CT-W630R/HEM and HB types	
	D910-D912	1SS254	
	C910	CKCYF103Z50	
	JA902, JA903 Remote control jack	RKN1004	

CT-W630R/HEM, HB, HPW, SD

DISPLAY UNIT

The display units of CT-W630R/HEM and HB types are the same as the display unit of CT-W630R/KUC, HPW and SD types with the exception of the following sections.

Mark	Symbol & Description	Part No.		Remarks
		CT-W630R/KUC, HPW and SD types	CT-W630R/HEM and HB types	
	D1507-D1509, D1511-D1517, D1520, D1521, D1523-D1527	SEL4914D-X	SEL4414G	

TRANSFORMER 1 UNIT

The transformer 1 units of CT-W630R/SD type are the same as that of CT-W630R/KUC, HPW, HEM and HB types for the service supply parts.

10. FOR CT-W530R/KUC, KUCXJ, HEM, HEMXJ, HPW, SD AND CT-W530R-S/HEWM TYPES

NOTES :

- Parts without part number cannot be supplied.
- The Δ mark found on some component parts indicates the importance of the safety factor of the part. Therefore, when replacing, be sure to use parts of identical designation.
- Parts marked by "⊙" are not always kept in stock. Their delivery time may be longer than usual or they may be unavailable.

The CT-W530R/KUC, KUCXJ, HEM, HEMXJ, HPW, SD and CT-W530R-S/HEWM types are the same as the CT-W630R/KUC type with the exception of the following sections.

Mark	Symbol & Description	Part No.							
		CT-W630R/ KUC type	CT-W530R/ KUC type	CT-W530R/ KUCXJ type	CT-W530R/ HEM type	CT-W530R/ HEMXJ type	CT-W530R/ HPW type	CT-W530R/ SD type	CT-W530R-S /HEWM type
	HX unit	Non supply
	Main unit	Non supply	Non supply	Non supply	Non supply	Non supply	Non supply	Non supply	Non supply
	Display unit	Non supply	Non supply	Non supply	Non supply	Non supply	Non supply	Non supply	Non supply
	Volume unit	Non supply	Non supply	Non supply	Non supply	Non supply	Non supply	Non supply	Non supply
	Transformer 1 unit	Non supply	Non supply	Non supply	Non supply	Non supply	Non supply	Non supply	Non supply
	Transformer 2 unit	Non supply	Non supply	Non supply	Non supply	Non supply	Non supply	Non supply	Non supply
	Control SW (1) unit	Non supply	Non supply	Non supply	Non supply	Non supply	Non supply	Non supply	Non supply
	Control SW (2) unit	Non supply	Non supply	Non supply	Non supply	Non supply	Non supply	Non supply	Non supply
	Switch unit	Non supply	Non supply	Non supply	Non supply	Non supply	Non supply	Non supply	Non supply
	Regulator unit	Non supply	Non supply	Non supply	Non supply	Non supply	Non supply	Non supply	Non supply
Δ	Strain relief	CM-22	CM-22	CM-22	CM-22B	CM-22B	CM-22B	CM-22B	CM-22B
Δ	AC Power cord	RDG1010	RDG1010	RDG1010	PDG1003	PDG1003	RDG1006	PDG1013	PDG1003
Δ	FU1801, FU1802	REK1001	REK1001	REK1001
Δ	Fuse (1.5A/125V)	REK-102	REK-102	REK-102	REK-102	REK-102
Δ	FU1801, FU1802	REK-102	REK-102	REK-102	REK-102	REK-102
Δ	Fuse (T1.6A/250V)	REK-102	REK-102	REK-102	REK-102	REK-102
Δ	Power transformer	RTT1116	RTT1116	RTT1116	RTT1123	RTT1123	RTT1124	RTT1125	RTT1123
	Voltage selector switch	PSB1002
	Stabilizer panel	RAH1483
	Door lens	RAH1605	RAH1622	RAH1622	RAH1622	RAH1622	RAH1622	RAH1622	RAH1622
	Meter panel	RAH1606	RAH1615	RAH1615	RAH1615	RAH1615	RAH1615	RAH1615	RAH1615
	Meter lens	RAH1607	RAH1621	RAH1621	RAH1621	RAH1621	RAH1621	RAH1621	RAH1621
	Door pocket (L)	RAH1609	RAH1612	RAH1612	RAH1612	RAH1612	RAH1612	RAH1612	RAH1627
	Door pocket (R)	RAH1610	RAH1613	RAH1613	RAH1613	RAH1613	RAH1613	RAH1613	RAH1629
	Stabilizer (B)	REB1085
	Insulator	VNK1095	VNK1095	VNK1095	VNK1095
	Leg assembly	PXA1201	PXA1201	PXA1201	PXA1201
	Stopper	VEC1061	VEC1061	VEC1061	VEC1061
	Knob (B)	RAC1414	RAC1414	RAC1414	RAC1414	RAC1414	RAC1414	RAC1414	RAC1492
	VR knob (B)	RAC1421	RAC1421	RAC1421	RAC1421	RAC1421	RAC1421	RAC1421	RAC1483
	Operation knob (B)	RAC1424	RAC1424	RAC1424	RAC1424	RAC1424	RAC1424	RAC1424	RAC1484
	Power knob	RAC1427	RAC1427	RAC1427	RAC1427	RAC1427	RAC1427	RAC1427	RAC1489

Mark	Symbol & Description	Part No.							
		CT-W630R/ KUC type	CT-W530R/ KUC type	CT-W530R/ KUCXJ type	CT-W530R/ HEM type	CT-W530R/ HEMXJ type	CT-W530R/ HPW type	CT-W530R/ SD type	CT-W530R-S/ HEWM type
	Slide knob	RAC1428	RAC1428	RAC1428	RAC1428	RAC1428	RAC1428	RAC1428	RAC1486
	VR knob (A)	RAC1430	RAC1430	RAC1430	RAC1430	RAC1430	RAC1430	RAC1430	RAC1485
	Operation knob (C)	RAC1475	RAC1475	RAC1475	RAC1475	RAC1475	RAC1475	RAC1475	RAC1493
	Operation knob (A)	RAC1479	RAC1479	RAC1479	RAC1479	RAC1479	RAC1479	RAC1479	RAC1488
	Eject knob	RAC1480	RAC1480	RAC1480	RAC1480	RAC1480	RAC1480	RAC1480	RAC1491
	REC mold (L)	RAH1608	RAH1608	RAH1608	RAH1608	RAH1608	RAH1608	RAH1608	RAH1645
	REC mold	RAH1611	RAH1611	RAH1611	RAH1611	RAH1611	RAH1611	RAH1611	RAH1623
	Bonnet	RXX1079	RXX1079	RXX1079	RXX1079	RXX1079	RXX1079	RXX1079	RXX1080
	Front panel assembly	RXX1259	RXX1260	RXX1260	RXX1260	RXX1260	RXX1260	RXX1260	RXX1264
	Packing case	RHG1164	RHG1166	RHG1200	RHG1174	RHG1201	RXX1169	RHG1169	RHG1170
	Operating instructions (English)	RRB1058	RRB1058	RRB1069	RRB1058	RRB1069	RXX1058	RRB1058
	Operating instructions (French, German, Italian, Dutch, Swedish, Spanish, Portuguese)	RRD1068	RRD1084	RRD1068
	Operating instructions (Spanish)	RRD1067

NOTE: Volume unit, Transformer 1 unit, Transformer 2 unit, Control SW (1) unit, Control SW (2) unit, Switch unit, Regulator unit No different parts to be supplied.

MAIN UNIT

The main units of CT-W530R/KUC, KUCXJ, HEM, HEMXJ, HPW, SD and CT-W530R-S/HEWM types are the same as the main unit of CT-W630R/KUC type with the exception of the following sections.

Mark	Symbol & Description	Part No.		Remarks
		CT-W630R/KUC type	CT-W530R/KUC, KUCXJ, HEM, HEMXJ, HPW, SD and CT-W530R-S/HEWM types	
	Q408 L402 Oscillator coil C403 C405 R406, R407	2SC1815 RTD1048 CQPA682J100 CFTXA332J50 RD 1/2 PM123J	2SD1302 RTD1049 CQPA752J100 CFTXA472J50 RD 1/2 PM103J	
	R425 VR405, VR406 Semi-fixed (100k)	RD 1/2 PM5R6J	RD 1/2 PM4R7J VRTB6VS104	

DISPLAY UNIT

The display units of CT-W530R/KUC, KUCXJ, HEM, HEMXJ, HPW, SD and CT-W530R-S/HEWM types are the same as the display unit of CT-W630R/KUC type with the exception of the following sections.

Mark	Symbol & Description	Part No.			Remarks
		CT-W630R/ KUC type	CT-W530R/KUC, KUCXJ, HPW and SD types	CT-W530R/HEM, HEMXJ and CT-W530R-S/ HEWM types	
	D1507-D1509, D1511-D1517, D1520, D1521, D1523-D1527 D1536, D1541 R1516	SEL4914D-X SEL4214R RD 1/2 PM152J	SEL4914D-X 	SEL4414G 	

11. SPECIFICATIONS

System	4 track, 2-channel stereo
Heads	"Hard Permalloy" recording/playback head × 1 "Hard Permalloy" playback head × 1 "Ferrite" erasing head × 1
Motor	DC servo capstan motor × 2 DC reel motor × 2
Wow and Flutter	No more than 0.055% (WRMS) (JIS) No more than ±0.16% (DIN)
Fast Winding Time	Approximately 90 seconds (C-60 tape)

Frequency Response

-20 dB recording:

Metal tape	25 to 18,000 Hz
Chrome tape	25 to 17,000 Hz
Normal tape	25 to 17,000 Hz

Signal-to-Noise Ratio

Dolby NR OFF

More than 57 dB

Noise Reduction Effect

Dolby B-type NR ON

More than 10 dB (at 5 kHz)

Dolby C-type NR ON

More than 19 dB (at 5 kHz)

Harmonic Distortion

No more than 1.0% (0 dB)

Input (Sensitivity)

LINE (INPUT)

63 mV (Input impedance 56 kΩ)

MIC (CT-W630R only)

0.4 mV

Output (Reference level)

LINE (OUTPUT)

316 mV (Output impedance 4.5 kΩ)

Headphone

0.25 mW (Load impedance 8 Ω)

Subfunctions

- DOLBY HX PRO recording function (only on deck II of model CT-W630 R)
- DOLBY NR B/C types
- Music search over ±15 selections
- High-speed and normal-speed copy (DECK I→DECK II)
- Relay playback/blank skip
- CD•DECK synchro recording capability
- Microphone jacks (CT-W630R only)
- Peak level meter with peak-hold function
- Automatic space recording mute
- Automatic tape selector
- System remote control available (Not on European model of CT-W630R)
- TIMER Recording
- TIMER Playback (Automatic relay on)

Miscellaneous

Power Requirements

U.S., Canadian models

AC 120V, 60 Hz

U.K., Australian models

AC 240 Volts~, 50/60 Hz

European model

AC 220 Volts~, 50/60 Hz

Multi-voltage models

AC 110V/120V-127V/220V/240V
(switchable), 50/60 Hz

Power Consumption

CT-W630R

24W

CT-W530R

23W

Dimensions

CT-W630R

420(W) × 128(H) × 268(D) mm

16-9/16(W) × 5-1/16(H) × 10-1/2(D) in

CT-W530R:

(except European model) ... 420(W) × 123(H) × 268(D) mm

16-9/16(W) × 4-13/16(H) × 10-1/2(D) in

CT-W530R:

(European model)

420(W) × 128(H) × 268(D) mm

16-9/16(W) × 5-1/16(H) × 10-1/2(D) in

Weight (without package)

4.6 kg (10 lb 2 oz)

Accessories

Operating instructions

1

Connection cord with pin plugs

2

Remote control cord

(Not on European model of CT-W630R)

1

CD•DECK synchro control cord

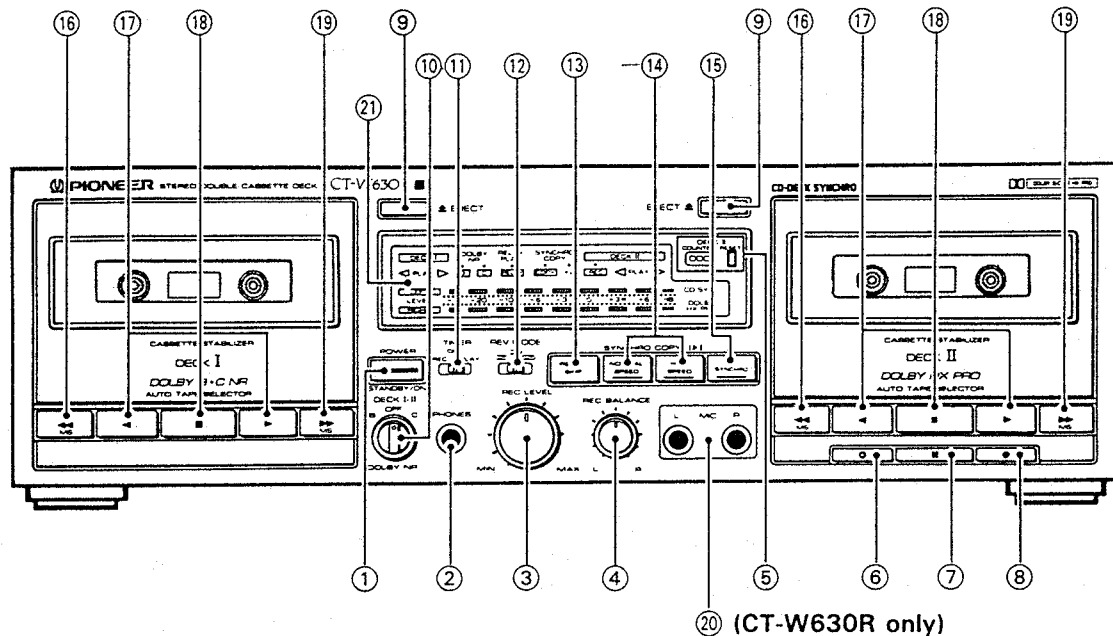
1

NOTE:

Specifications and design subject to possible modifications without

notice, due to improvements.

12. PANEL FACILITIES



① POWER (STANDBY/ON) switch

The unit POWER switch is geared to selecting the transformer secondary and so even at the STANDBY position, the unit circuitry will work as long as the power cord is connected to a power outlet.

② PHONES jack

To insert headphones jack.

③ REC LEVEL control

④ REC BALANCE control

Balances the recording level between left (L) and right (R) channels.

⑤ DECK II tape COUNTER and RESET button

Resets the tape counter reading to "000".
(The tape COUNTER works for deck II only.)

⑥ Recording mute button (○)

Pressing this button during recording, creates a blank portion of approximately 4 seconds on the tape. The unit then enters the recording pause mode.

⑦ Pause button (■)

Stops tape transport temporarily during recording or playback. Press the button again to resume operation. (This can also be done by pressing the Play (▶) or (◀) button.) This button does not work during fast-forward and rewind.

⑧ Recording button (●)

When the recording (●) button is pressed, the unit is set to recording standby mode. Press the pause (■) button or playback (▶) or (◀) button when ready to record.

The unit will not enter the recording standby if a cassette with broken erasure prevention tabs is loaded.
Only deck II is equipped with a recording function.

⑨ EJECT button (▲)

Press to open the cassette door after you have pressed the stop (■) button and the tape has stopped.

NOTE:

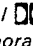
If the power is turned off while the tape is moving, the cassette door may remain locked. In this case, turn the power on before pressing the EJECT button (▲).

⑩ DOLBY* NR switch

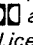
Set this switch to B or C for recording with the built-in Dolby Noise Reduction Systems and for playback of tapes which have been recorded using the Dolby Noise Reduction Systems. To play other tapes, set the DOLBY NR switch to OFF.

When the DOLBY NR switch is set to ON, the MPX filter function operates in synchronization with the Dolby noise reduction system. The operation of this filter may cause some high frequencies to be muted when the Dolby NR system is used for recording of FM broadcasts from some tuners.

*

- Dolby noise reduction manufactured under license from Dolby Laboratories Licensing Corporation.
- "DOLBY" and the double-D symbol  are trademarks of Dolby Laboratories Licensing Corporation.

(CT-W630R only)

- Dolby noise reduction and HX Pro headroom extension manufactured under license from Dolby Laboratories Licensing Corporation. HX Pro originated by Bang & Olufsen.
- "DOLBY", the double-D symbol  and "HX PRO" are trademarks of Dolby Laboratories Licensing Corporation.

NOTE:

When playing back Dolby NR-encoded tapes, always set this switch to the same position (B or C) used for recording.

11 **TIMER mode selector**

OFF:
Normally, be sure to leave the selector in this position except for repeat playback.

REC:
Set to this position for timer recording.

PLAY:
Set to this position for timer playback.

- Recording or playback may suddenly start when turning power on with this selector in the REC or PLAY position.
- When the selector is set to the PLAY position and the unit is turned on with POWER switch ① or an audio timer, the unit automatically enters the playback mode.

12 **REV MODE (reverse mode) selector**

↔ :
Tape transport stops after one side of a tape is played or recorded.

↔ :
When the forward playback (▶) button is pressed, each side of the tape is played or recorded once. When the reverse playback (◀) button is pressed to play or record on the tape, tape transport stops at the end of the reverse side (the side facing away from you when you loaded the tape).

↻ :
When the forward playback (▶) button is pressed, both sides of the tape are played continuously until 32 sides have been played. When the reverse playback (◀) button is pressed, both sides of the tape are played continuously until 31 sides have been played. In record mode, both sides of the tape are recorded once and then tape transport stops.

13 **RELAY/SKIP button**

Press this button to perform relay playback from deck I to deck II or from deck II to deck I.
When this button is pressed and a blank section of more than 15 seconds is encountered during playback, the unit fast forwards the tape to the beginning of the next selection and playback starts at that point.

14 **SYNCHRO COPY (I▶II) buttons**

NORMAL SPEED:
Starts tape copy at normal speed from deck I to deck II.

HIGH SPEED:
Starts tape copy at double speed (half time, from deck I to deck II).

15 **CD SYNCHRO button**

This button is used to carry out CD-Deck synchro recording from a CD player.

16 **Fast reverse button (◀◀, MS)**

To fast-reverse the tape in the direction of the arrows. When pressed during playback, the unit will skip one selection each time the button is pressed, then starts playback from the beginning of the next selection.

17 **Playback button (▶ or ◀)**

Play ▶:
Press this button to play back or record on the forward side of the tape (the side facing you). (Forward playback/recording)
Used to start recording in record-standby mode.

Play ◀:
Press this button to play back or record on the reverse side of the tape (the side facing away from you). (Reverse playback/recording)
Used to start recording in record-standby mode.

18 **Stop button (■)**

To stop all operations, including tape copy.

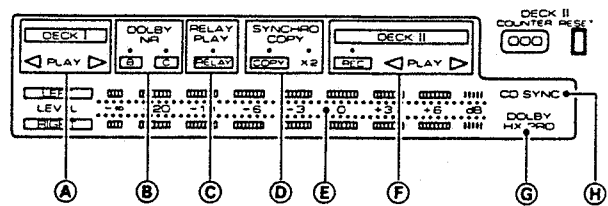
19 **Fast forward button (▶▶, MS)**

To fast-forward the tape in the direction of the arrows. When pressed during playback, the unit will skip one selection each time the button is pressed, then start playback from the beginning of the next selection.

20 **MIC-L/R jacks (CT-W630R only)**

To insert the plugs of the microphones L and R.

21 **Operating Display**



A DECK I Tape Transport Mode Indicators

B DOLBY NR Indicator

- When Dolby NR is off

DOLBY NR

- Dolby B-type NR on

DOLBY NR
B

- Dolby C-type NR on

DOLBY NR
C

C RELAY PLAY Indicator

Lights up when RELAY/SKIP button is pressed to start relay playback or to activate skip mechanism.

D SYNCHRO COPY Indicator

Lights up during the tape copy operation.

- Normal-speed copy

SYNCHRO COPY
COPY

- High-speed copy

SYNCHRO COPY
COPY x2

E LEVEL Meter

Holds peak indications for about 1.2 second. The beside the +3 dB mark indicates the Dolby NR systems standard level.

F DECK II Tape Transport Mode Indicators

G DOLBY HX PRO indicator (CT-W630R only)

This unit is provided with a built-in Dolby HX PRO Headroom Extension circuit. The DOLBY HX PRO indicator always appears on the display when the POWER switch is turned on.

H CD SYNCHRO indicator

Lights when synchro recording from a CD player is being carried out.