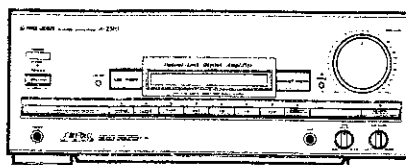


Service Manual

PIONEER
The Art of Entertainment



ORDER NO.
ARP2158

STEREO AMPLIFIER **A-Z370**

MODEL A-Z370 HAS FOLLOWING VERSIONS :

Type	Power requirement	Export destination
HE	AC220V, 240V(switchable) *	European continent
HB	AC220V, 240V(switchable) *	United Kingdom
HEWZIW	AC220V, 240V(switchable) *	Germany and Italy
SD	AC110V, 120V-127V, 220V, 240V(switchable)	Kingdom of Saudi Arabia and general market

* : Change the primary wiring.

- This manual is applicable to the A-Z370/HE, HB and HEWZIW types.
- As to the HB and HEWZIW types, refer to page 37.
- As to the other types, refer to applicable service manuals.
- This product is a component of a system. As to the system composition, refer to the system manual.
- This product does not function properly when independent ; to avoid malfunctions, be sure to connect it to the prescribed system component, otherwise damage may result.

CONTENTS

1. SPECIFICATIONS	2	4. SCHEMATIC DIAGRAMS AND P.C.BOARD CONNECTION DIAGRAMS	11
2. EXPLODED VIEWS, PACKING AND PARTS LIST	3	5. FOR HB AND HEWZIW TYPES	37
3. P.C.B's PARTS LIST	7	6. PANEL FACILITIES	51

PIONEER ELECTRONIC CORPORATION 4-1, Meguro 1-Chome, Meguro-ku, Tokyo 153, Japan
PIONEER ELECTRONICS SERVICE INC. P.O. Box 1760, Long Beach, California 90801 U.S.A.
PIONEER ELECTRONICS OF CANADA, INC. 505 Cochrane Drive, Markham, Ontario L3R 8E3 Canada
PIONEER ELECTRONIC [EUROPE] N.V. Keetberglaan 1, 2740 Feveren, Belgium
PIONEER ELECTRONICS AUSTRALIA PTY. LTD. 178-184 Boundary Road, Braeside, Victoria 3195, Australia TEL: [03] 580-9911
 © PIONEER ELECTRONIC CORPORATION 1991

FV JAN. 1991 Printed in Japan

1. SPECIFICATIONS

Continuous Power Output (DIN)	60 W + 60 W
	(1 kHz, T.H.D. 1 %, 8 Ω)
Music power (DIN)	100 W + 100 W (1 kHz, T.H.D. 1 %, 8 Ω)
D/A converter section	
Signal-to-Noise Ratio	More than 96 dB (EIAJ)
Dynamic range	More than 94 dB (EIAJ)
Frequency range	25 Hz to 20 kHz
Total Harmonic Distortion (1 kHz, 30 W, 8 Ω)	
.....	No more than 0.06 %**
Input sensitivity	
PHONO (MM)	2.5 mV
VCR	150 mV
LD	250 mV
Output level	
DAT, VCR	150 mV
MUTING	-∞
Power Supply/Miscellaneous	
Power requirements	a.c. 240 Volts~, 50/60 Hz
Power consumption	300 W
AC outlets switched (x 1)	50 W
Dimensions	360 (W) x 343 (D) x 135.5 (H) mm
Weight (without package)	8.2 kg
Accessories	
Operating instructions	1
Remote control unit	1
Dry cell batteries "AAA" (IEC R03/UM-4)	1

** Measured By Audio Spectrum Analyzer.

2. EXPLODED VIEWS, PACKING AND PARTS LIST

NOTES:

- Parts without part number cannot be supplied.
- Parts marked by "⊙" are not always kept in stock. Their delivery time may be longer than usual or they may be unavailable.
- The Δ mark found on some component parts indicates the importance of the safety factor of the part. Therefore, when replacing, be sure to use parts of identical designation.

2.1 PARTS LIST

Mark	No.	Description	Part No.	Mark	No.	Description	Part No.	
	1	VOL KNOB(VOLUME)	AAB1117		49	REAR PANEL		
	2	ROTARY KNOB(MIC LEVEL,BALANCE)	AAB1130		50	BOTTOM PLATE		
	3	POWER BUTTON	AAD1595		51	BONNET CASE	ANE1208	
	4	BOTTUN L (LSS MODE)	AAD1596		52	TRANS. HOLDER		
	5	BUTTON L (DIRECT MODE)	AAD1597		53	HEAT SINK HOLDER		
	6	KIN BUTTON (MUTING, LSS SET)	AAD1682		54	VOLUME HOLDER		
	7	FUNCTION BUTTON	AAD1967		55	HOLDER		
	8	BUTTON S (SPEAKERS)	AAD1970		56	HOLDER A		
	9	LENS L	AAK1757		57	HEAT SINK		
	10	LENS S	AAK1758		58	HEAT SINK		
	11	LENS	AAK1759		59	GROUND PLATE		
	12	SHEET			60	OPERATING INSTRUCTIONS	ARC1248	
	13	SHEET				(Dutch, Swedish, Spanish, Portuguese)		
	14	PVC SHEET			61	OPERATING INSTRUCTIONS	ARE1180	
	15	PANEL	AAK2116			(English, German, French, Italian)		
	16			62	WARRANTY CARD		
	17	NAME PLATE(PLASTIC)			63		
	18	NAME PLATE			64	DAC ASSEMBLY	AWK1384	
	19	SCREW (STEEL)	ABA-283		65	MIC ASSEMBLY		
	20	SCREW	ABA-298		66	HEAD PHONE ASSEMBLY		
	21	SCREW (STEEL)	ABA1009		67	SUB TRANS ASSEMBLY		
	22	SCREW (STEEL)	ABA1011		68	POWER VR ASSEMBLY		
	23	SCREW	ABA1018		69	RELAY ASSEMBLY		
	24	SCREW (STEEL)	ABA1047		70	SP TERMINAL ASSEMBLY		
	25	SCREW (STEEL)	ABA1050		71	FUSE ASSEMBLY		
	26	SCREW (STEEL)	ABA1072	⊙	72	DISPLAY ASSEMBLY	AWZ3360	
	27	SCREW	ABA1098	⊙	73	AF ASSEMBLY	AWZ3402	
Δ	28	AC POWER CORD	ADG1019	⊙	74	POWER ASSEMBLY	AWZ2734	
	29	RUBBER CUSHION		⊙	75	STANDBY ASSEMBLY	AWZ3505	
	30			76	REMOTE CONTROLLER	AXD1193	
						(CU-AZ019)		
	31	NYLON RIVET	AEC-510		77	SCREW	BBZ26P060FMC	
	32	STRAIN RELIEF	AEC-882		78	SCREW	BBZ26P080FMC	
	33	PCB SUPPORT			79	NUTS	NK90FZB	
	34			80	FOOT(PLASTIC)	RXA1276	
	35	BATTERY (R03, AAA)			81		
	36	FRONT PAD	AHA1272		Δ	82	FU1 FUSE(T2.5A)	AEK-403
	37	REAR PAD	AHA1273		Δ	83	FU2 FUSE(T2A)	AEK-017
	38	PACKING CASE	AHD2007		Δ	84	FU3 FUSE(T1.6A)	AEK-405
	39	LITERATURE BAG			Δ	85	FU4 FUSE(T1.6A)	AEK-405
	40	PACKING SHEET	AHG1016		Δ	86	FU5 FUSE(T2A)	AEK-017
	41	TERMINAL SCREW			Δ	87	T1 POWER TRANSFORMER	ATS1223
	42	MOUNTING PLATE				88	BATTERY COVER	AZN2072
	43	FRONT PANEL ASSY	AMB1759					
	44	PCB MOULD						
	45	LEG ASSY(S)						
	46	PLATE	AMR2133					
	47	SASH						
	48	CHASSIS						

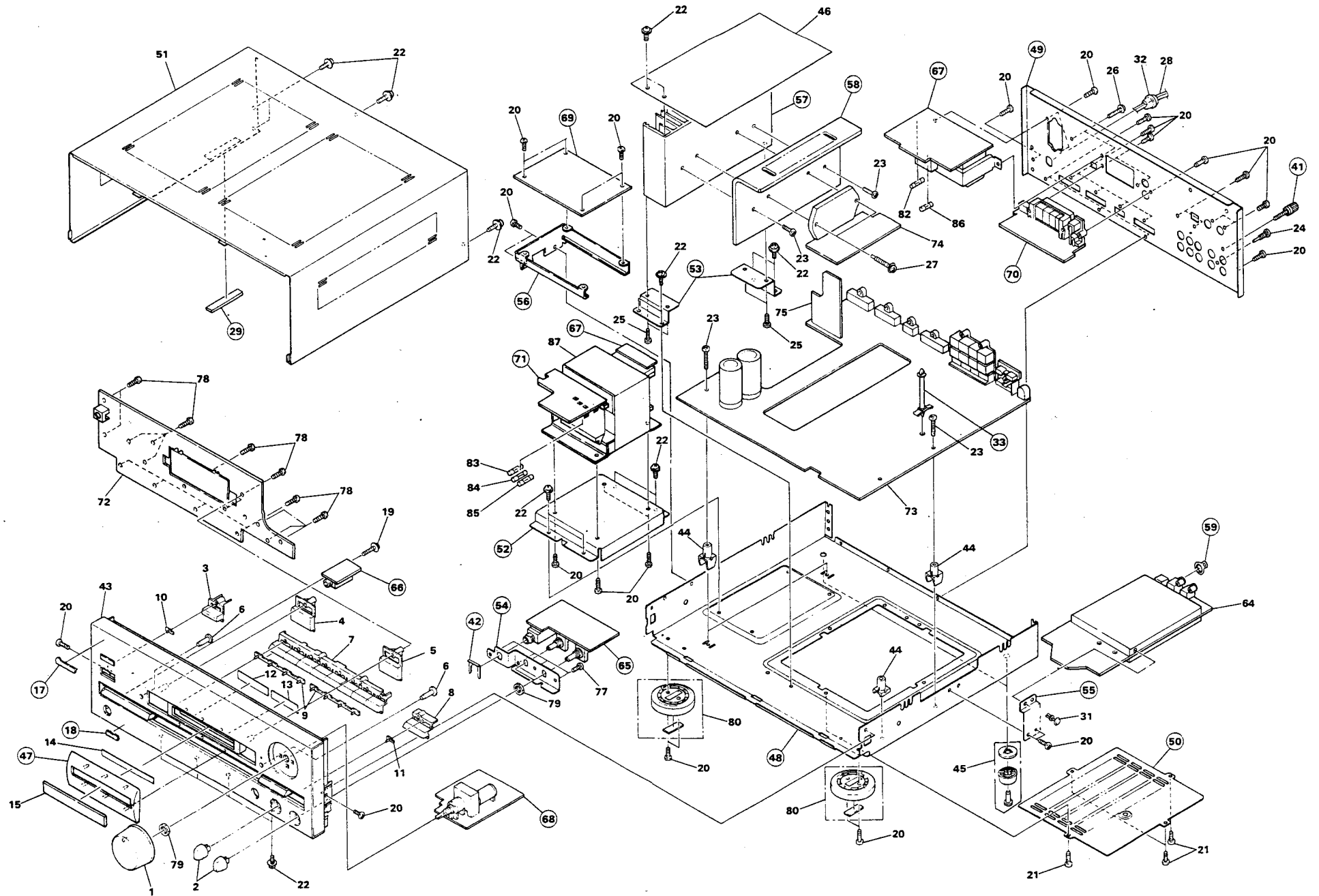
2. 2 EXPLODED VIEWS

A

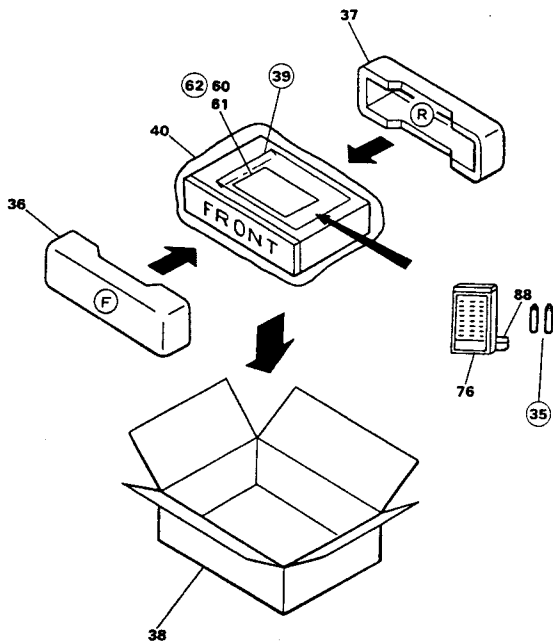
B

C

D



2.3 PACKING



3. P.C.B's PARTS LIST

NOTES:

- Parts without part number cannot be supplied.
- Parts marked by "⊙" are not always kept in stock. Their delivery time may be longer than usual or they may be unavailable.
- The Δ mark found on some component parts indicates the importance of the safety factor of the part. Therefore, when replacing, be sure to use parts of identical designation.
- When ordering resistors, first convert resistance values into code form as shown in the following examples.

Ex.1 When there are 2 effective digits (any digit apart from 0), such as 560 ohm and 47k ohm (tolerance is shown by J = 5%, and K = 10%).

560Ω 56 × 10¹ 561 RD1/4PS561J
 47kΩ 47 × 10³ 473 RD1/4PS473J
 0.5Ω 0R5 RD2H0R5K
 1Ω 010 RD1P010K

Ex.2 When there are 3 effective digits (such as in high precision metal film resistors).

5.62kΩ 562 × 10¹ 5621 RD1/4SR5621F

Mark	Symbol & Description	Part No.	Mark	Symbol & Description	Part No.
DAC ASSEMBLY (AWK1384)					
SEMICONDUCTORS					
	IC801 LOGIC IC	TC74HCU04AP	C818	ELECTR.CAPACITOR	CEAS101M10
	IC802 DIGITAL LF_IC	PD0037	C819	MICA CAPACITOR	CMA220J500
	IC803 IC DIGITAL FILTER	PD0060	C820	ELECTR.CAPACITOR	CEAS470M10
	IC804 LOGIC IC	TC74HC32AP	C821,C822	CERAMIC CAPACITOR	CKDYX473M16
	IC805 D/A CONVERTER	SAA7350GP	C823	CERAMIC CAPACITOR	ACG1021
	IC806,IC807 IC	NJM072D-E	C824	ELECTR.CAPACITOR	CEAS010M50
	IC808 OP-AMP IC	RC4558DXP	C825	ELECTR.CAPACITOR	CEAS101M10
	Q801,Q802 TRANSISTOR	RN2203	C826	CERAMIC CAPACITOR	ACG1021
	Q804,Q805 TRANSISTOR	2SC2458	C827	CERAMIC CAPACITOR	CKDYX473M16
	Q806,Q807 TRANSISTOR	2SC2878	C828	ELECTR.CAPACITOR	CEAS470M10
	Q808,Q809 TRANSISTOR	RN1203	C829	CERAMIC CAPACITOR	CKDYX473M16
	Q810 TRANSISTOR	RN2203	C830	ELECTR.CAPACITOR	CEAS470M10
	Q811 TRANSISTOR	RN2201	C831,C832	CERAMIC CAPACITOR	ACG1019
	Q812 TRANSISTOR	RN2203	C833,C834	CERAMIC CAPACITOR	CCDSL390J50
	D801,D809,D810 DIODE	HSS104-02	C835	CERAMIC CAPACITOR	ACG1019
	D811 ZENER DIODE	RD6.2ESB	C836	CERAMIC CAPACITOR	CKDYB471K50
COIL					
	L801 AXIAL INDUCTOR	LAU330K	C837,C838	CERAMIC CAPACITOR	CCDSL390J50
	L809 FERRITE BEAD	ATX1008	C839,C840	CERAMIC CAPACITOR	CKDYX473M16
	L814 FERRITE BEAD	ATX1008	C841,C842	ELECTROLYTIC CAPACIT	CEAS470M10
	L818 FERRITE BEAD	ATX1008	C843	CERAMIC CAPACITOR	CKDYX473M16
	L821,L822 AXIAL INDUCTOR	LAU220K	C844,C845	CERAMIC CAPACITOR	CKDYB222K50
	L823-L826 AXIAL INDUCTOR	LAU010M	C847	ELECTR.CAPACITOR	CEAS101M10
	L827 FERRITE BEAD	ATX1008-A	C848	CERAMIC CAPACITOR	CKDYX473M16
CAPACITORS					
	C805 CERAMIC CAPACITOR	CKDYX473M16	C849-C852	ELECTROLYTIC CAPACIT	CEAS470M10
	C806 CERAMIC CAPACITOR	ACG1021	C853,C854	CERAMIC CAPACITOR	CKDYX473M16
	C807 ELECTR.CAPACITOR	CEAS010M50	C855-C858	CERAMIC CAPACITOR	ACG1017
	C808 CERAMIC CAPACITOR	ACG1021	C859,C860	MYLOR FILM CAPACITOR	CQMA102J50
	C809 ELECTR.CAPACITOR	CEAS101M10	C861,C862	PL.STYRENE CAPACITOR	CQSA101J50
	C810 ELECTR.CAPACITOR	CEAS010M50	C863,C864	ELECTROLYTIC CAPACIT	CEYA2R2M50
	C811 AUDIO FILM CAPACITOR	CPTXA224J50	C865,C866	MYLOR FILM CAPACITOR	CQMA683J50
	C812 ELECTR.CAPACITOR	CEAS470M10	C867,C868	CERAMIC CAPACITOR	ACG1018
	C813 CERAMIC CAPACITOR	ACG1021	C869,C870	ELECTROLYTIC CAPACIT	CEYA2R2M50
	C814 CERAMIC CAPACITOR	CCDCH220J50	C871-C876	ELECTR.CAPACITOR	CEAS470M10
	C815 ELECTR.CAPACITOR	CEAS101M10	RESISTORS		
	C816 CERAMIC CAPACITOR	ACG1022	R870-R873	CARBON FILM RESISTOR	RD1/4PM390J
			Other resistors		
					RD1/8PM□□□
OTHERS					
				DIGITAL JACK 1-P	AKB1073
				PHOTO SENSOR MODULE	AKX1015

Mark	Symbol & Description	Part No.
	CN1 CONNECTOR(11P)	KPE11
	T801 OSC TRANSFORMER	ATX1003

MIC ASSEMBLY

SEMICONDUCTORS

IC601 OP-AMP IC	RC4558DXP
Q601,Q602 TRANSISTOR	2SC2458
D601,D602 DIODE	HSS104-02

CAPACITORS

C601 ELECTROLYTIC CAPACIT	CEJA220M16
C602 CERAMIC CAPACITOR	ACG1019
C603 ELECTROLYTIC CAPACIT	CEJA3R3M50
C604 CERAMIC CAPACITOR	ACG1017
C605 AUDIO FILM CAPACITOR	CPTXA474J50

C606 CERAMIC CAPACITOR	CKCYB681K50
C607 ELECTROLYTIC CAPACIT	CEJA100M25
C608 ELECTR.CAPACITOR	CEJA010M50
C609 ELECTR.CAPACITOR	CEAS470M10
C610 ELECTR.CAPACITOR	CEJA470M10

C611 CERAMIC CAPACITOR	CKCYF103Z50
C612,C613 ELECTROLYTIC CAPACIT	CEJA100M25

RESISTORS

R614,R615 CARBON FILM RESISTOR	RD1/4PM390J
VR601 VARIABLE(100K-X1)	ACS1026
VR602 VARIABLE(10K-X1)	ACS1025
Other resistors	RD1/8PM□□□□

OTHERS

JACK	AKN1017
------	---------

HEAD PHONE ASSEMBLY

CAPACITOR

C451 CERAMIC CAPACITOR	CKDYX104M25
------------------------	-------------

RESISTORS

▲ R453-R456 METAL OXIDE RESISTOR	RS2LMF331J
----------------------------------	------------

OTHERS

JACK	AKN1010
------	---------

SUB TRANS ASSEMBLY

SEMICONDUCTORS

D191,D192 ZENER DIODE	RD6.2ESB3
-----------------------	-----------

CAPACITORS

C191,C192 CKA (0.01/AC400V)	ACG1003
-----------------------------	---------

OTHERS

AC SOCKET 1-P	AKP1034
SOCKET 8-P	AKP1045
RY191 RELAY	ASR1024
T191 POWER TRANSFORMER	ATT1115

POWER VR ASSEMBLY

SEMICONDUCTORS

IC651 OP-AMP IC	RC4558DXP
-----------------	-----------

Mark	Symbol & Description	Part No.
------	----------------------	----------

CAPACITORS

C651,C652 ELECTR.CAPACITOR	CEAS100M25
C653 ELECTR.CAPACITOR	CEAS470M10
C654 ELECTROLYTIC CAPACIT	CEYA470M25
C655 CERAMIC CAPACITOR	CKCYX103M25
C656 ELECTROLYTIC CAPACIT	CEYA470M25

C657,C658 CERAMIC CAPACITOR	CCCSL390J50
C661,C662 ELECTR.CAPACITOR	CEAS100M50

RESISTORS

R659-R661 CARBON FILM RESISTOR	RD1/4PM390J
VR651 VARIABLE RESISTOR	ACX1027
Other resistors	RD1/8PM□□□□

OTHERS

CN2 CONNECTOR(15P)	KPE15
--------------------	-------

◎DISPLAY ASSEMBLY (AWZ3360)

SEMICONDUCTORS

IC701 SYSTEM CONTROL IC	PD5160A
Q701-Q704 TRANSISTOR	DTA124ES
Q705,Q706 TRANSISTOR	DTA143ES
Q711 TRANSISTOR	DTC124ES
Q712,Q713 TRANSISTOR	2SC2458

Q716 TRANSISTOR	DTC124ES
Q717,Q718 TRANSISTOR	2SC2458
Q719 TRANSISTOR	2SA1048
Q720 TRANSISTOR	2SC2458
Q721-Q723 TRANSISTOR	2SA1048

D701,D702 DIODE	HSS104-02
D703 LED(RED)	AEL1099
D704-D706 DIODE	HSS104-02
D707,D708 LED(RED)	AEL1099
D709 LED	AEL1100

D710-D715 LED(RED)	AEL1099
D719-D721 DIODE	HSS104-02
D722 LED(RED)	AEL1099
D723 DIODE	HSS104-02
D725,D726 LED	AEL1091

D727 LED	AEL1074
D728 LED(RED)	AEL1038
D729 LED	AEL1091
D731 DIODE	HSS104-02

SWITCHES

S701-S714 SWITCH	ASG1029
------------------	---------

COIL

L701 AXIAL INDUCTOR	LAU101K
---------------------	---------

CAPACITORS

C701 CERAMIC CAPACITOR	CKCYX473M25
C702 ELECTR.CAPACITOR	CEAS221M10
C703,C704 CERAMIC CAPACITOR	CKCYX103M25
C705 CERAMIC CAPACITOR	CKCYB102K50
C706 ELECTR.CAPACITOR	CEAS010M50

C707 CEA (47000/5.5V)	ACH1070
C708 ELECTR.CAPACITOR	CEAS4R7M50
C709,C710 CERAMIC CAPACITOR	ACG1021
C711 CERAMIC CAPACITOR	CKCYX473M25

Mark	Symbol & Description	Part No.
------	----------------------	----------

RESISTORS

R742 RESISTOR ARRAY 100K	RA5T104J
R744 RESISTOR ARRAY(100K)	RA6T104J
R761 RESISTOR ARRAY (10K)	RA4T104J
Other resistors	RD1/8PM□□□□

OTHERS

X701 CERAMIC RESONATOR	ASS1025
SOCKET(10P)	AKP1044
REMOTE RECEIVER UNIT	AXX1010

RELAY ASSEMBLY

SEMICONDUCTORS

Q451 TRANSISTOR	DTC124ES
Q452,Q453 TRANSISTOR	2SD438
Q454 TRANSISTOR	DTC124ES
Q455,Q456 TRANSISTOR	2SD438
D451-D460 ZENER DIODE	RD12ESB3

COILS

L451,L452 COIL	ATH1004
----------------	---------

CAPACITORS

C461-C464 MYLOR FILM CAPACITOR	CQMA104J50
--------------------------------	------------

RESISTORS

R461-R464 CARBON FILM RESISTOR	RD1/4PMFL100J
R474-R476 METAL OXIDE RESISTOR	RS2LMF821J
Other resistors	RD1/8PM□□□□

OTHERS

CN451 CONNECTOR(7P)	KPC7
RY451-RY455 RELAY	ASR-112

SP TERMINAL ASSEMBLY

SWITCHES

S451 SWITCH	ASH1015
-------------	---------

CAPACITORS

C465 ELECTROLYTIC CAPACIT	CEANP4R7M100
---------------------------	--------------

OTHERS

PIN JACK(2P)	AKB1039
SPEAKER TERMINAL 8-P	AKE-111
CN453 JUMPER CONNECTOR	KPC8

◎POWER ASSEMBLY (AWZ2734)

SEMICONDUCTORS

IC401 AUDIO IC	STK4192-2GP
----------------	-------------

CAPACITORS

C401,C402 POLYESTER CAPACITOR	CQMXA472J100
C403 ELECTR.CAPACITOR	CEAS4R7M50
C404 ELECTROLYTIC CAPACIT	CEHAQ4R7M50
C405,C406 CERAMIC CAPACITOR	CCDSL470J50
C407,C408 ELECTROLYTIC CAPACIT	CEYA101M50

C413,C414 ELECTR.CAPACITOR	CEAS220M50
C415,C416 ELECTR.CAPACITOR	CEAS470M50
C417,C418 ELECTR.CAPACITOR	CEAS101M25
C423 ELECTR.CAPACITOR	CEAS470M50
C427-C430 ELECTROLYTIC CAPACIT	CEYA220M50

Mark	Symbol & Description	Part No.
------	----------------------	----------

RESISTORS

R405,R406 CARBON FILM RESISTOR	RDR1/4PM563J
R411-R414 CARBON FILM RESISTOR	RD1/2PM332J
▲ R417,R418 CARBON FILM RESISTOR	RD1/4PMFL222J
▲ R419 CARBON FILM RESISTOR	RD1/2PM102J
R420 CARBON FILM RESISTOR	RD1/4PMFL101J

RESISTORS

▲ R421 CARBON FILM RESISTOR	RD1/4PMFL471J
▲ R422 CARBON FILM RESISTOR	RD1/4PMFL101J
Other resistors	RD1/8PM□□□□

FUSE ASSEMBLY

CAPACITORS

C390 MYLOR FILM CAPACITOR	CQMA104K250
---------------------------	-------------

◎AF ASSEMBLY (AWZ3402)

SEMICONDUCTORS

IC101 REGULATOR IC	UPC78M05H
IC102 REGULATOR IC	NJM78M56FA5
IC103 REGULATOR IC	NJM79M05FA
IC104 REGULATOR IC	UPC78M12H
IC105 MECHANISM DRIVER IC	TA7291S

IC201 OP-AMP IC	RC4558DXP
IC202 LOGIC IC	TC4066BP
IC203 LOGIC IC	MC14052BCP
IC204 OP-AMP IC	M5218ALF
IC205 LOGIC IC	TC4066BP

IC206 LOGIC IC	MC14052BCP
IC207 OP-AMP IC	RC4558DXP
IC301,IC302 GEQ IC	LA3607
IC303 GEQ EVR IC	LC7522
Q101 TRANSISTOR	2SB560

Q102 TRANSISTOR	2SA970
Q103-Q105 TRANSISTOR	2SC2458
Q106 TRANSISTOR	2SD438
Q107,Q108 TRANSISTOR	DTC124ES
Q551 TRANSISTOR	2SA1048

Q552 TRANSISTOR	2SC2603
Q553 TRANSISTOR	2SA1048
D101 DIODE	RBV402
D102-D107 DIODE	S5566
D108 DIODE	RB152

D109 DIODE	HSS104-02
D110 ZENER DIODE	RD33ESB2
D111 ZENER DIODE	RD6.2ESB
D112,D113 DIODE	HSS104-02
D114 ZENER DIODE	RD3.0ESB1

D115 DIODE	HSS104-02
D116 ZENER DIODE	RD4.7ESB
D117 DIODE	HSS104-02

CAPACITORS

C101 CKA (0.01/AC250V)	ACG1005
C102,C103 CERAMIC CAPACITOR	CKDYF103Z50
C104,C105 ELECTROLYTIC CAPACIT	ACH1031
C106,C107 ELECTR.CAPACITOR	CEAS222M16
C108 ELECTR.CAPACITOR	CEAS471M50

C109 ELECTR.CAPACITOR	CEAS332M25
-----------------------	------------

Mark	Symbol & Description	Part No.
C110	ELECTR.CAPACITOR	CEHAQ101M50
C111,C112	ELECTR.CAPACITOR	CEAS101M50
C113	ELECTROLYTIC CAPACIT	CEHAQ220M50
C114	ELECTROLYTIC CAPACIT	CEHAQ470M50
C115	ELECTROLYTIC CAPACIT	CEHAQ470M16
C116	ELECTROLYTIC CAPACIT	CEHAQ221M10
C117	ELECTR.CAPACITOR	CEAS100M25
C118	CERAMIC CAPACITOR	CKCYX103M25
C119	ELECTR.CAPACITOR	CEAS221M10
C120	ELECTR.CAPACITOR	CEAS010M50
C121	CERAMIC CAPACITOR	ACG1021
C201,C202	CERAMIC CAPACITOR	ACG1017
C203-C206	ELECTR.CAPACITOR	CEAS2R2M50
C207,C208	CERAMIC CAPACITOR	ACG1017
C209,C210	CERAMIC CAPACITOR	CKCYB152K50
C211,C212	CERAMIC CAPACITOR	CKCYB562K50
C213,C214	ELECTR.CAPACITOR	CEAS010M50
C215,C216	ELECTR.CAPACITOR	CEAS470M10
C217,C218	ELECTR.CAPACITOR	CEAS4R7M50
C219,C220	ELECTR.CAPACITOR	CEAS100M25
C221,C222	ELECTROLYTIC CAPACIT	CEYA470M50
C223,C224	ELECTR.CAPACITOR	CEAS100M25
C225,C226	CERAMIC CAPACITOR	ACG1018
C227,C228	CERAMIC CAPACITOR	ACG1019
C229,C230	CERAMIC CAPACITOR	ACG1017
C231-C234	ELECTR.CAPACITOR	CEAS100M25
C237	CERAMIC CAPACITOR	CKDYX104M25
C238	CERAMIC CAPACITOR	CKDYF473Z50
C239,C240	ELECTR.CAPACITOR	CEAS2R2M50
C241,C242	ELECTR.CAPACITOR	CEAS100M25
C247,C248	ELECTROLYTIC CAPACIT	CEYA470M50
C301,C302	ELECTROLYTIC CAPACIT	CEASR15M50
C303,C304	ELECTR.CAPACITOR	CEASR47M50
C305,C306	CERAMIC CAPACITOR	CKCYX683M25
C307,C308	ELECTROLYTIC CAPACIT	CEASR15M50
C309,C310	CERAMIC CAPACITOR	CKCYX273M25
C311,C312	CERAMIC CAPACITOR	CKCYX683M25
C313,C314	CERAMIC CAPACITOR	CKCYX103M25
C315,C316	CERAMIC CAPACITOR	CKCYX273M25
C317,C318	CERAMIC CAPACITOR	CKCYB472K50
C319,C320	CERAMIC CAPACITOR	CKCYX103M25
C321,C322	CERAMIC CAPACITOR	CKCYB331K50
C323,C324	ELECTR.CAPACITOR	CEAS220M16
C325,C326	CERAMIC CAPACITOR	CKCYB472K50
C327-C330	CERAMIC CAPACITOR	CKCYB182K50
C331,C332	CERAMIC CAPACITOR	CKCYB681K50
C333,C334	ELECTR.CAPACITOR	CEAS220M16
C335-C340	ELECTR.CAPACITOR	CEAS221M10

RESISTORS

△	R101,R102	METAL OXIDE RESISTOR	RS2LMFR22J
△	R103	METAL OXIDE RESISTOR	RS2LMF222J
△	R105,R106	CARBON FILM RESISTOR	RD1/4PMF470J
△	R129	CARBON FILM RESISTOR	RD1/2PMFL2R2J
△	R132	CARBON FILM RESISTOR	RD1/4PM100J
△	R133-R135	CARBON FILM RESISTOR	RD1/4PM100J
△	R136	METAL OXIDE RESISTOR	RS3LMF2R2J
△	R217,R218	CARBON FILM RESISTOR	RD1/4PM390J
△	R257,R258	CARBON FILM RESISTOR	RD1/4PM390J

Mark	Symbol & Description	Part No.
R321-R324	CARBON FILM RESISTOR	RD1/4PM390J
R327,R328	CARBON FILM RESISTOR	RD1/4PM390J
	Other resistors	RD1/8PM□□□J
OTHERS		
	PHONO JACK 4-P	AKB-115
	PIN JACK(6P)	AKB1123
	PLUG(10P)	AKM1037
	JACK	AKN-203
	SOCKET(4P)	AKP1046
	SOCKET(13P)	AKP1047
	SOCKET(14P)	AKP1048
	SOCKET(15P)	AKP1049
	SCREW	PBZ30P080FMC

◎STANDBY ASSEMBLY (AWZ3505)

SEMICONDUCTORS

IC151	REGULATOR IC	NJM78M56FAS
Q152	TRANSISTOR	2SB560
Q554	TRANSISTOR	2SD438
D151-D154	DIODE	S5566
D156	ZENER DIODE	RD33ESB2
D157	ZENER DIODE	RD6.2ESB

CAPACITORS

C151	ELECTROLYTIC CAPACIT	CEHAQ222M16
C152	ELECTROLYTIC CAPACIT	CEHAQ471M16
C153,C156	ELECTROLYTIC CAPACIT	CEHAQ221M50
C157	ELECTROLYTIC CAPACIT	CEHAQ220M50
C158	ELECTROLYTIC CAPACIT	CEHAQ470M50
C159	ELECTROLYTIC CAPACIT	CEHAQ221M10

RESISTORS

△	R151,R152	METAL OXIDE RESISTOR	RS3LMF122J
△	R153	METAL OXIDE RESISTOR	RS2LMF222J
△	R157	CARBON FILM RESISTOR	RD1/4PMFLAR7J
		Other resistors	RD1/8PM□□□J

4. SCHEMATIC DIAGRAMS AND P.C.BOARD CONNECTION DIAGRAMS

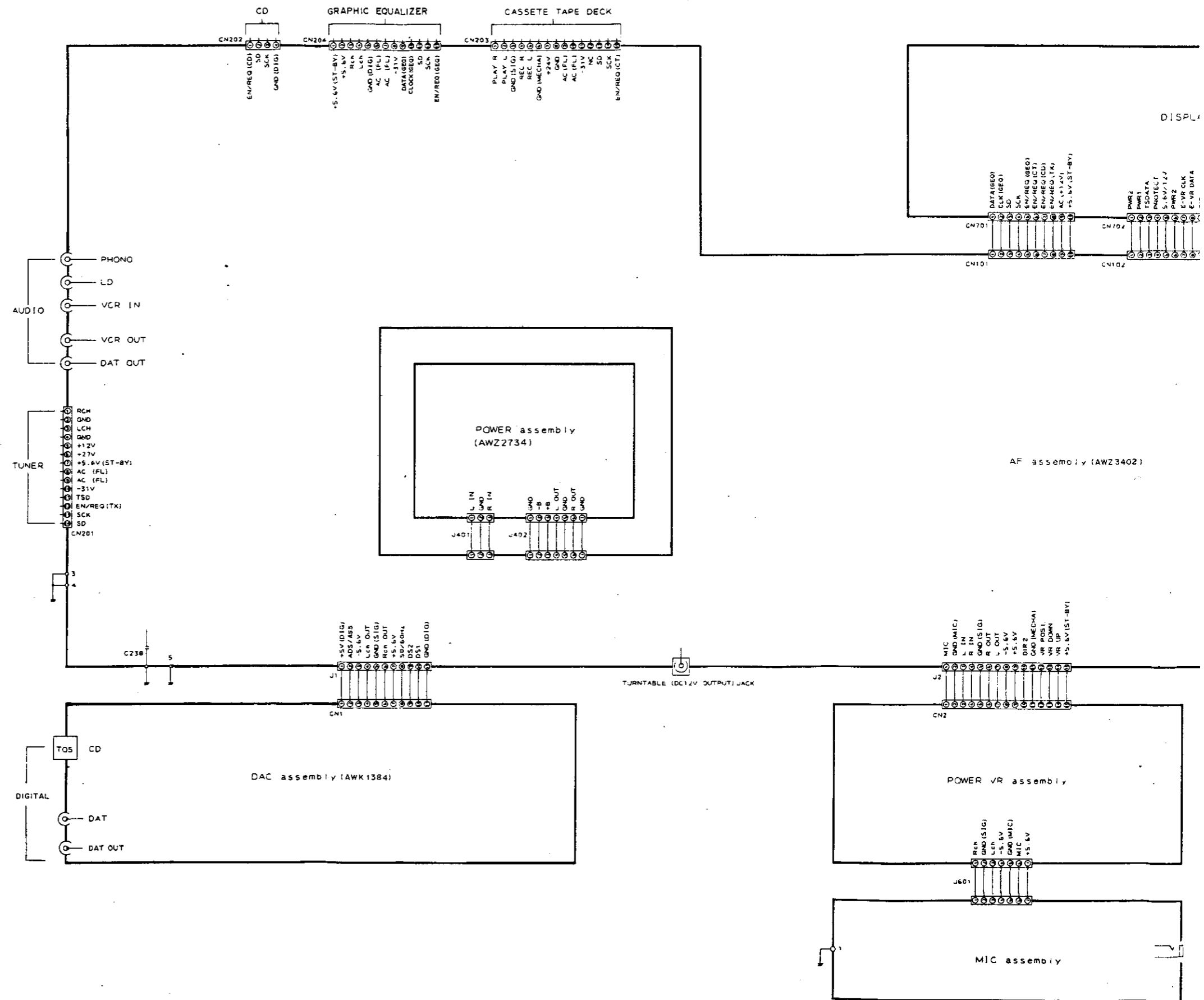
4.1 OVER ALL SCHEMATIC DIAGRAM

A

B

C

D



1

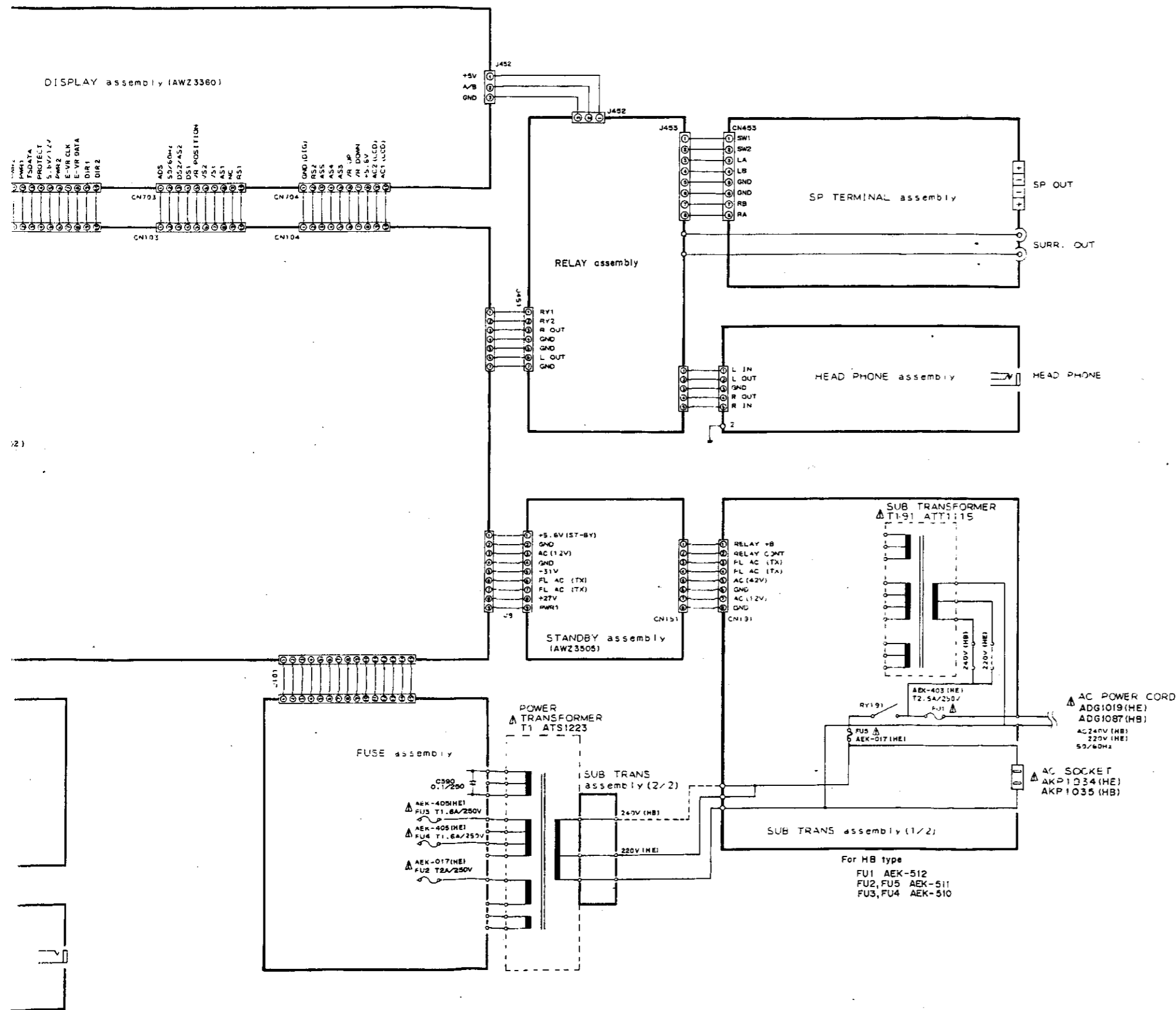
2

3

4

5

6



1.RESISTORS:

Indicated in Ω , 1/8, 1/4W., $\pm 5\%$ tolerance unless otherwise noted
 k; k Ω , M; M Ω , (F); $\pm 1\%$, (G); $\pm 2\%$, (K); $\pm 10\%$, (M);
 $\pm 20\%$ tolerance.

2.CAPACITORS:

Indicated in capacity (μ F)/voltage(V) unless otherwise noted p;
 pF. Indication without voltage is 50V except electrolytic capacitor.

3.VOLTAGE, CURRENT:

\square V ; Signal voltage at 60 W + 60 W, 8 Ω output(1kHz).
 \square ; DC voltage (V) at no input signal.
 Value in () is DC voltage at rated power.
 \square mA; DC current at no input signal.

4.OTHERS:

\blacktriangleright ; Signal route.
 \odot ; Adjusting point
 The Δ mark found on some component parts indicates the
 importance of the safety factor of the part. Therefore, when
 replacing, be sure to use parts of identical designation.
 * marked capacitors and resistors have parts numbers.
 This is the basic schematic diagram, but the actual circuit may
 vary due to improvements in design.

5.SWITCHES:

DISPLAY ASSEMBLY

- | | |
|-----------------|----------------------------------|
| S701 : POWER | S709 : LD |
| S702 : LSS SET | S710 : VCR |
| S703 : LSS MODE | S711 : SURROUND &
STEREO WIDE |
| S704 : PHONO | S712 : DIRECT MODE |
| S705 : TUNER | S713 : MUTING |
| S706 : TAPE | S714 : SPEAKERS A/B OR
A+B |
| S707 : DAT | |
| S708 : CD | |

A

B

C

D

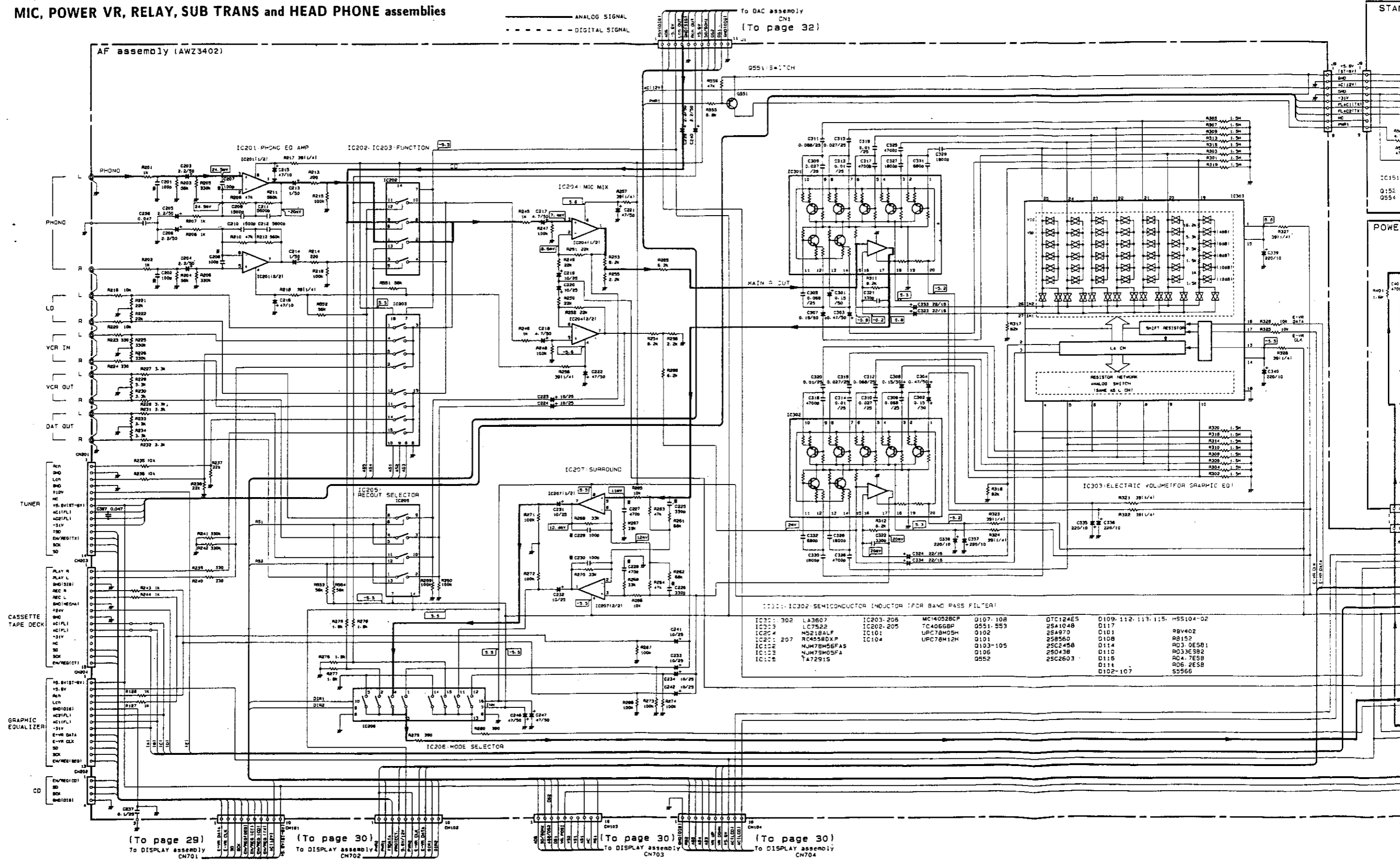
4.2 AF(AWZ3402), STANDBY(AWZ3505), SP TERMINAL, FUSE, POWER(AWZ2734), MIC, POWER VR, RELAY, SUB TRANS and HEAD PHONE assemblies

A

B

C

D

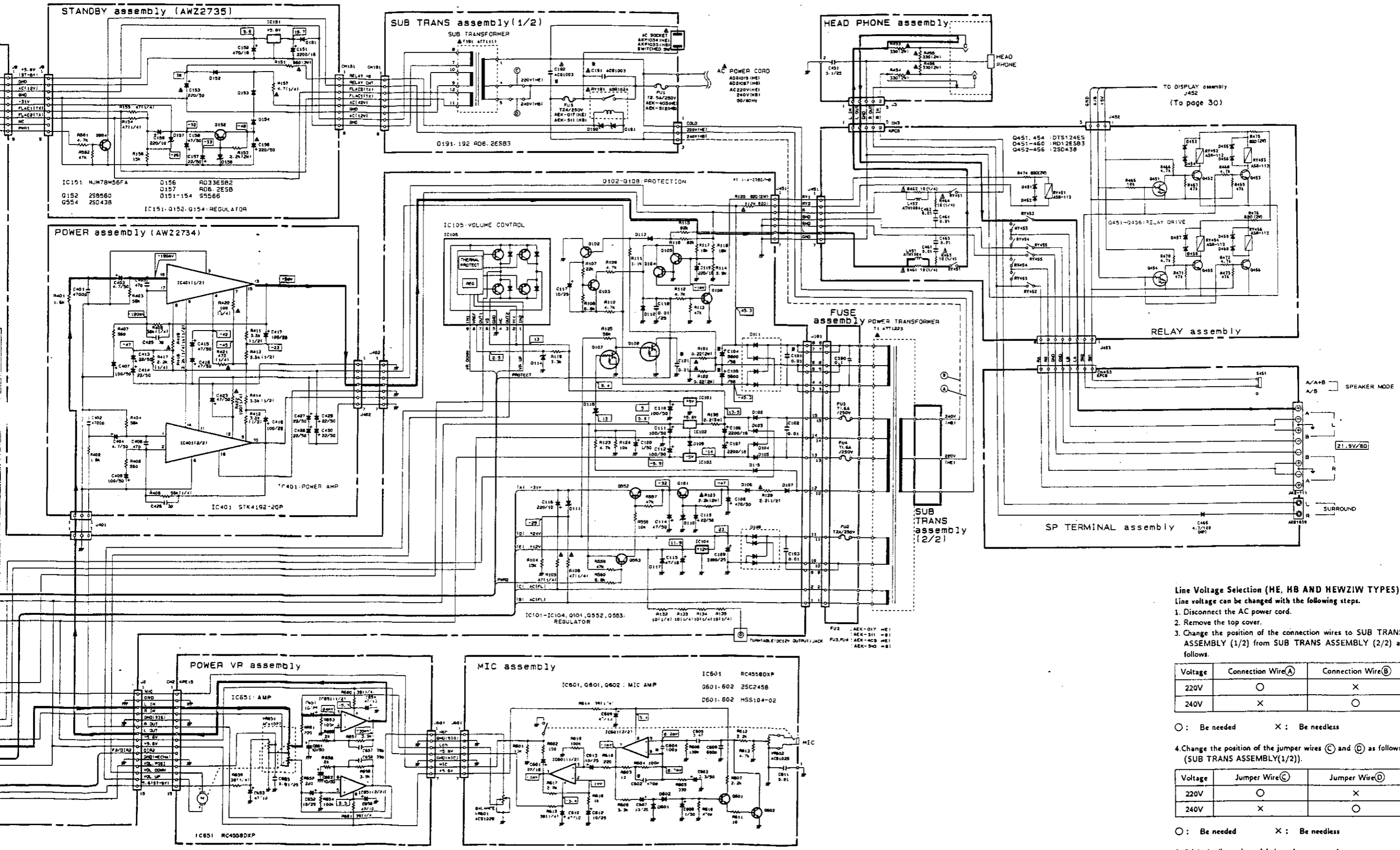


(To page 29) To DISPLAY assembly CN701

(To page 30) To DISPLAY assembly CN702

(To page 30) To DISPLAY assembly CN703

(To page 30) To DISPLAY assembly CN704



Line Voltage Selection (HE, HB AND HEWZIW TYPES)
Line voltage can be changed with the following steps.

1. Disconnect the AC power cord.
2. Remove the top cover.
3. Change the position of the connection wires to SUB TRANS ASSEMBLY (1/2) from SUB TRANS ASSEMBLY (2/2) as follows.

Voltage	Connection Wire(A)	Connection Wire(B)
220V	○	×
240V	×	○

○ : Be needed × : Be needless

4. Change the position of the jumper wires (C) and (D) as follows. (SUB TRANS ASSEMBLY(1/2)).

Voltage	Jumper Wire(C)	Jumper Wire(D)
220V	○	×
240V	×	○

○ : Be needed × : Be needless

5. Stick the line voltage label on the rear panel.

Parts No.	Description
AXX-193	220V label
AXX-192	240V label

A

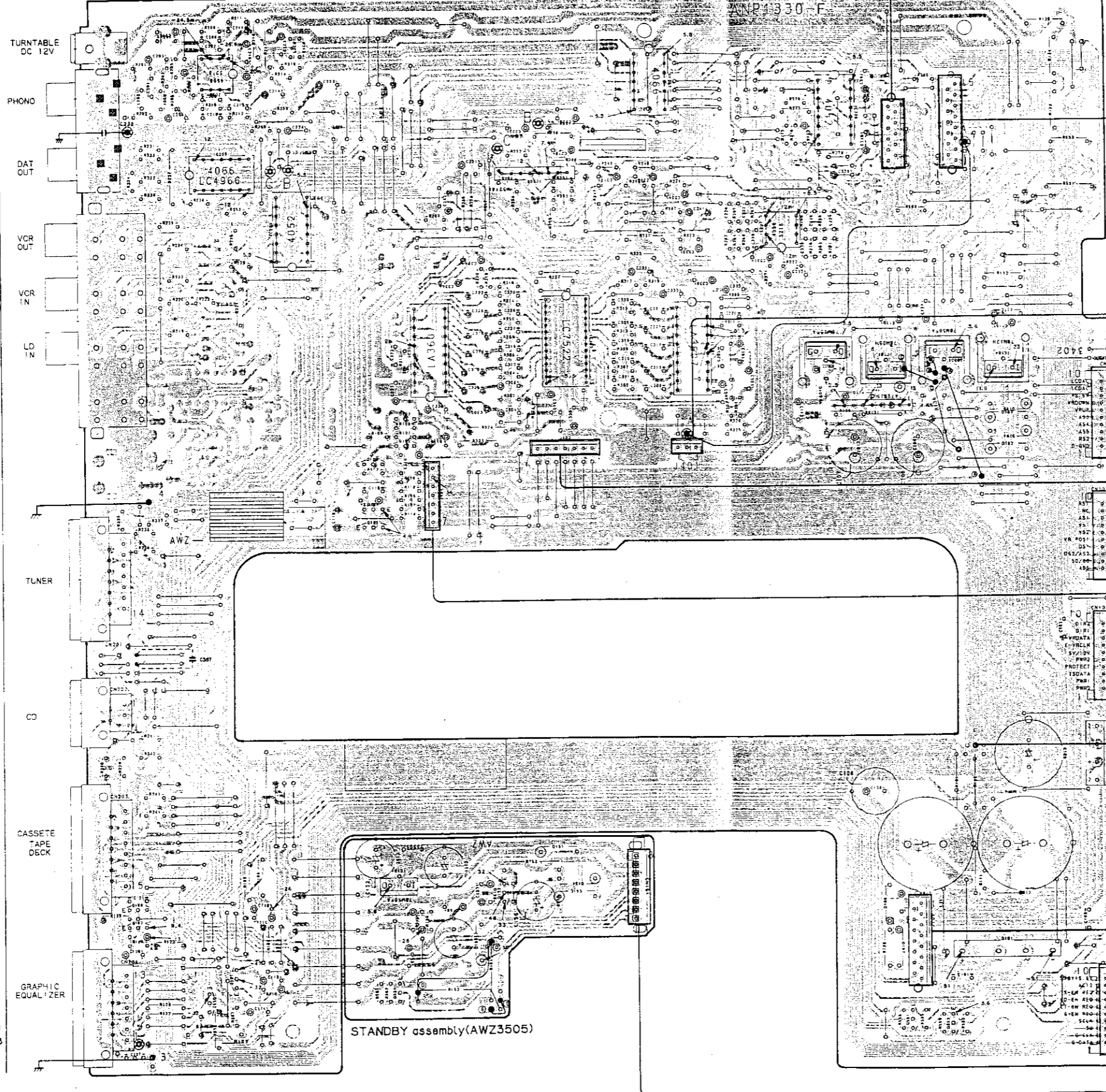
B

C

D

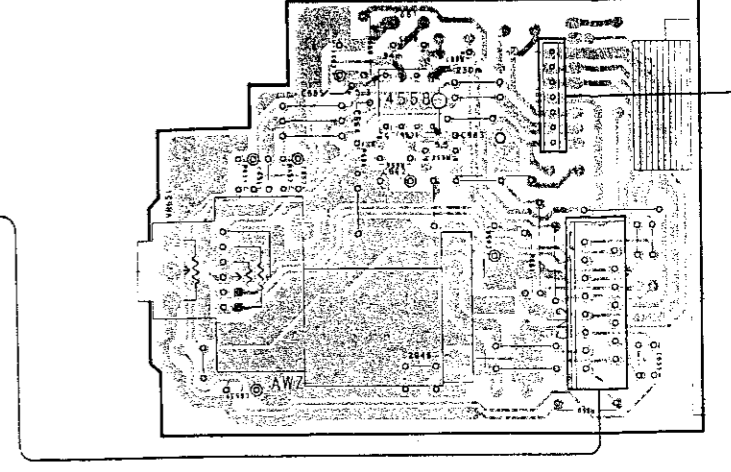
AF assembly (AWZ3402)

- IC201
- IC202
- IC206
- PHONO
- DAT OUT
- IC205
- IC204
- VCR OUT
- IC203
- IC207
- VCR IN
- LD IN
- IC301
- IC101
- IC302
- IC105
- IC303
- Q103
- Q102
- Q106
- Q104
- Q105
- TLNER
- AWZ
- CD
- CASSETTE TAPE DECK
- Q108
- Q107
- Q101
- Q552
- GRAPHIC EQUALIZER
- Q551
- Q553



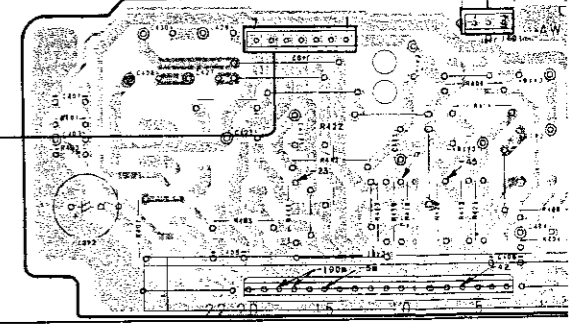
To DAC assembly CN1
(To page 33)

POWER VR assembly



To DISPLAY assembly CN704
(To page 28)

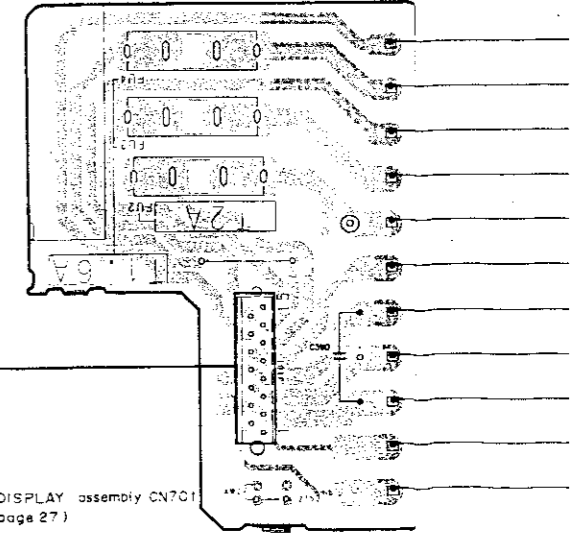
POWER assembly (AWZ2734)



To DISPLAY assembly CN703
(To page 28)

To DISPLAY assembly CN702
(To page 27)

FUSE assembly



To DISPLAY assembly CN701
(To page 27)

MIC assembly

HEADPHONE assembly

SP TERMINAL assembly

RELAY assembly

To DISPLAY assembly
(To page 28)

SUB TRANS(1/2) assembly

SUB TRANS(2/2) assembly

AC POWER CORD
AC 220V
240V
50/60HZ

HEADPHONE assembly

SP TERMINAL assembly

RELAY assembly

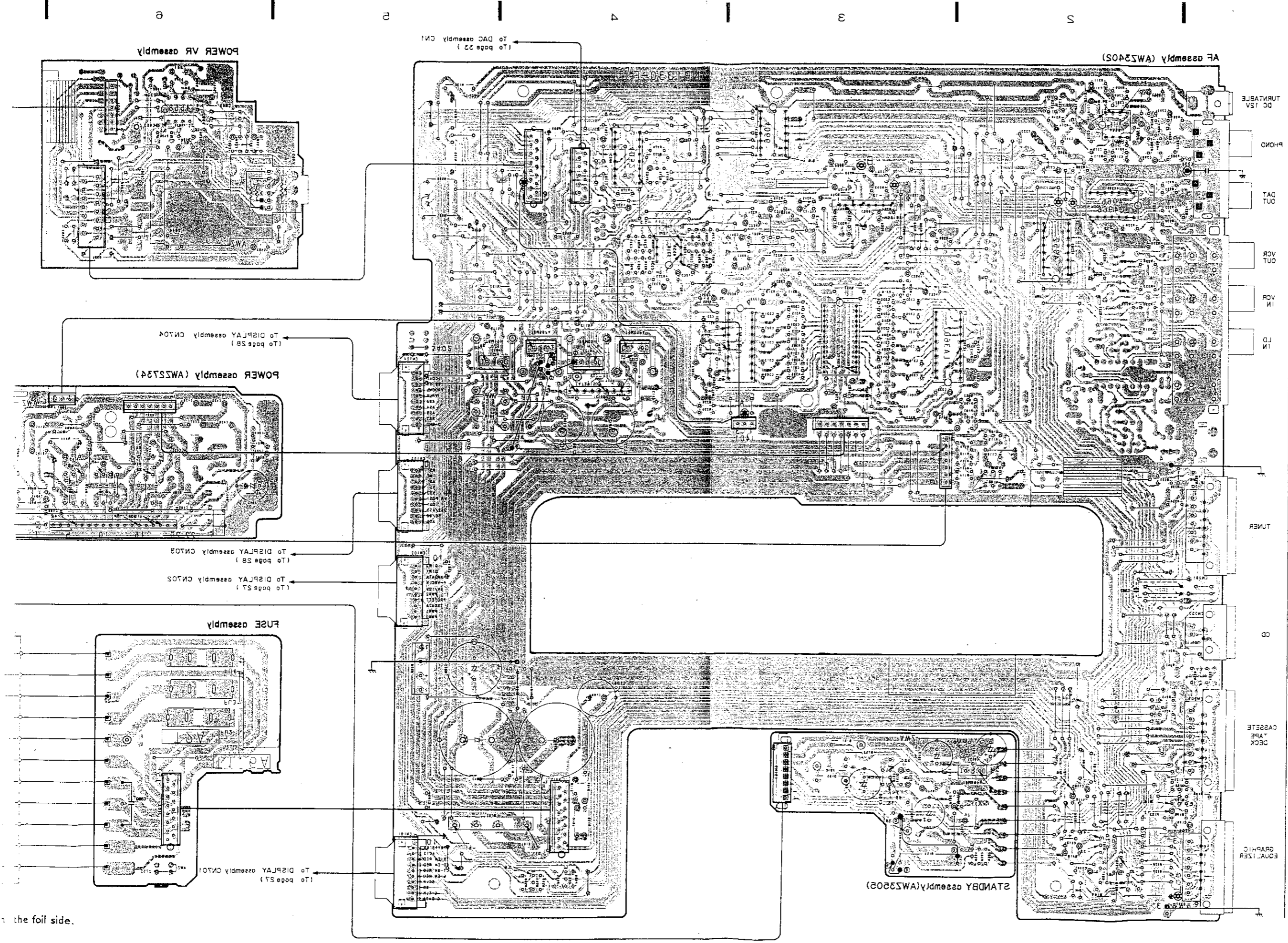
To DISPLAY assembly
(To page 28)

SUB TRANS(1/2) assembly

SUB TRANS(2/2) assembly

AC POWER CORD
AC 220V
240V
50/60HZ

This P.C.B. connection diagram is viewed from the foil side.



- DC 15A TURNTABLE
- 1C501
- 1C505
- 1C506
- PHONO
- 1C507
- DAT
- DUT
- 1C508
- OUT
- VCR
- 1C509
- VCR
- IN
- LD
- 1C201
- 1C101
- 1C205
- 1C102
- 1C202
- 0103
- 0105
- 0106
- 0108
- 0104
- 0102
- TUNER
- CD
- CASSETTE
- DECK
- GRAPHIC
- EQ
- 0108
- 0107
- 0101
- 0225
- 0221
- 0222

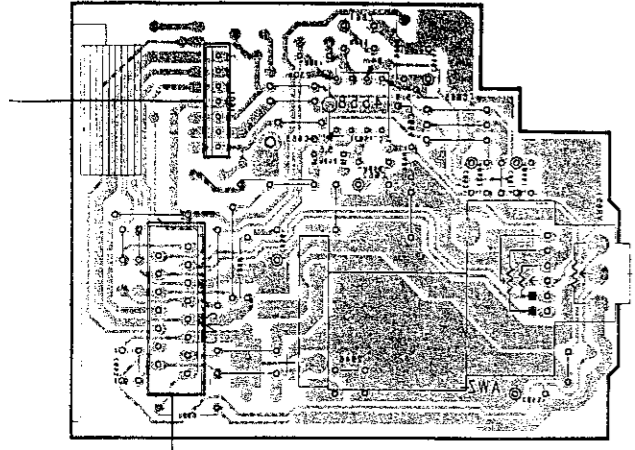
A

B

C

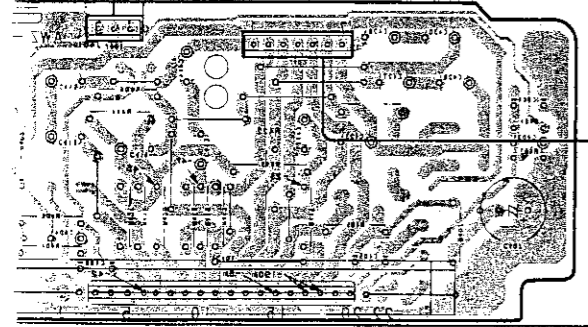
D

POWER VR assembly



To DAC assembly CN1
(To page 23)

POWER assembly (AW2234)

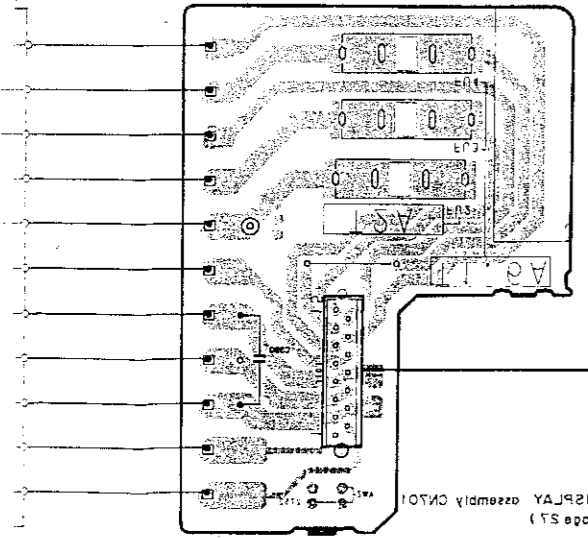


To DISPLAY assembly CN704
(To page 28)

To DISPLAY assembly CN703
(To page 28)

To DISPLAY assembly CN705
(To page 27)

FUSE assembly



To DISPLAY assembly CN701
(To page 27)

the foil side.

1 2 3 4 5 6

1 2 3 4 5 6

4.3 DISPLAY(AWZ3360) assembly

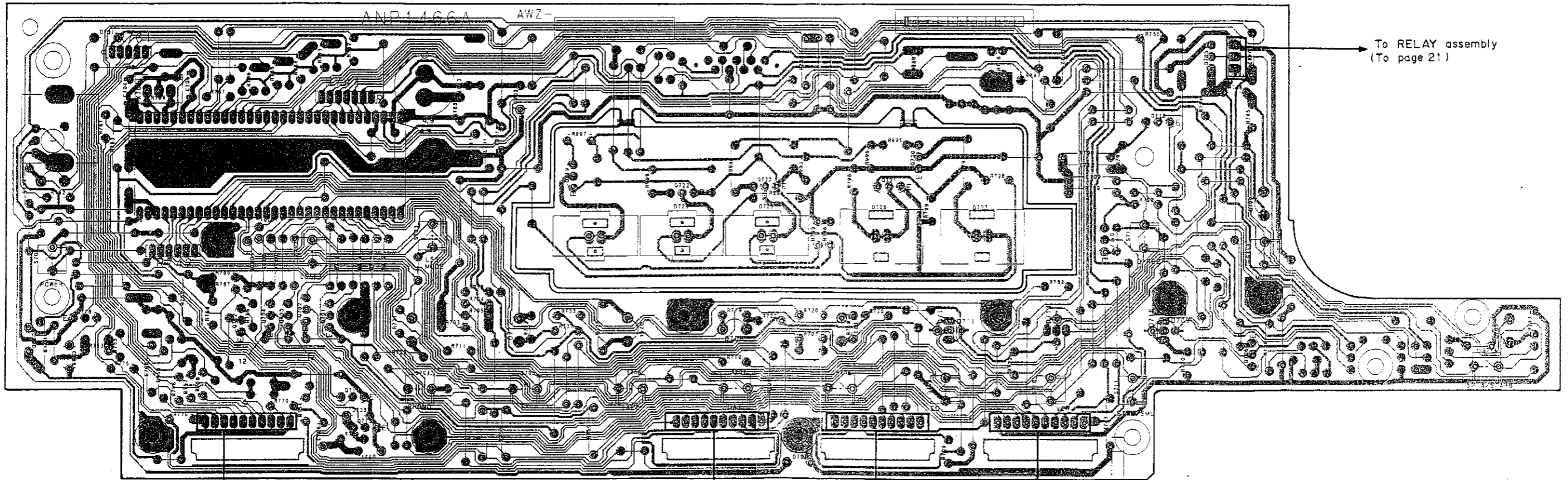
- NOTE
1. This P.C.B. connection diagram is viewed from the parts mounted side
 2. The parts which have been mounted on the board can be replaced with those shown with the corresponding wiring symbols listed in the following Table.

P.C.B. pattern diagram indication	Corresponding part symbol	Part Name
		Transistor
		Radiator type transistor
		Diode
		Resistor
		Capacitor (Polarity)
		Capacitor (Non-polarity)

P.C.B. pattern diagram indication	Part Name
IC	IC
S	Switch
RY	Relay
L	Coil
F	Filter
VR	Variable resistor or Semi-fixed resistor

3. The capacitor terminal marked with ⊖ (double circles) shows negative terminal.
4. The diode terminal marked with ⊕ (double circles) shows cathode side.
5. The transistor terminal to which E is affixed shows the emitter.

DISPLAY assembly(AWZ3360)



To RELAY assembly
(To page 21)

To AF assembly CN101
(To page 20)

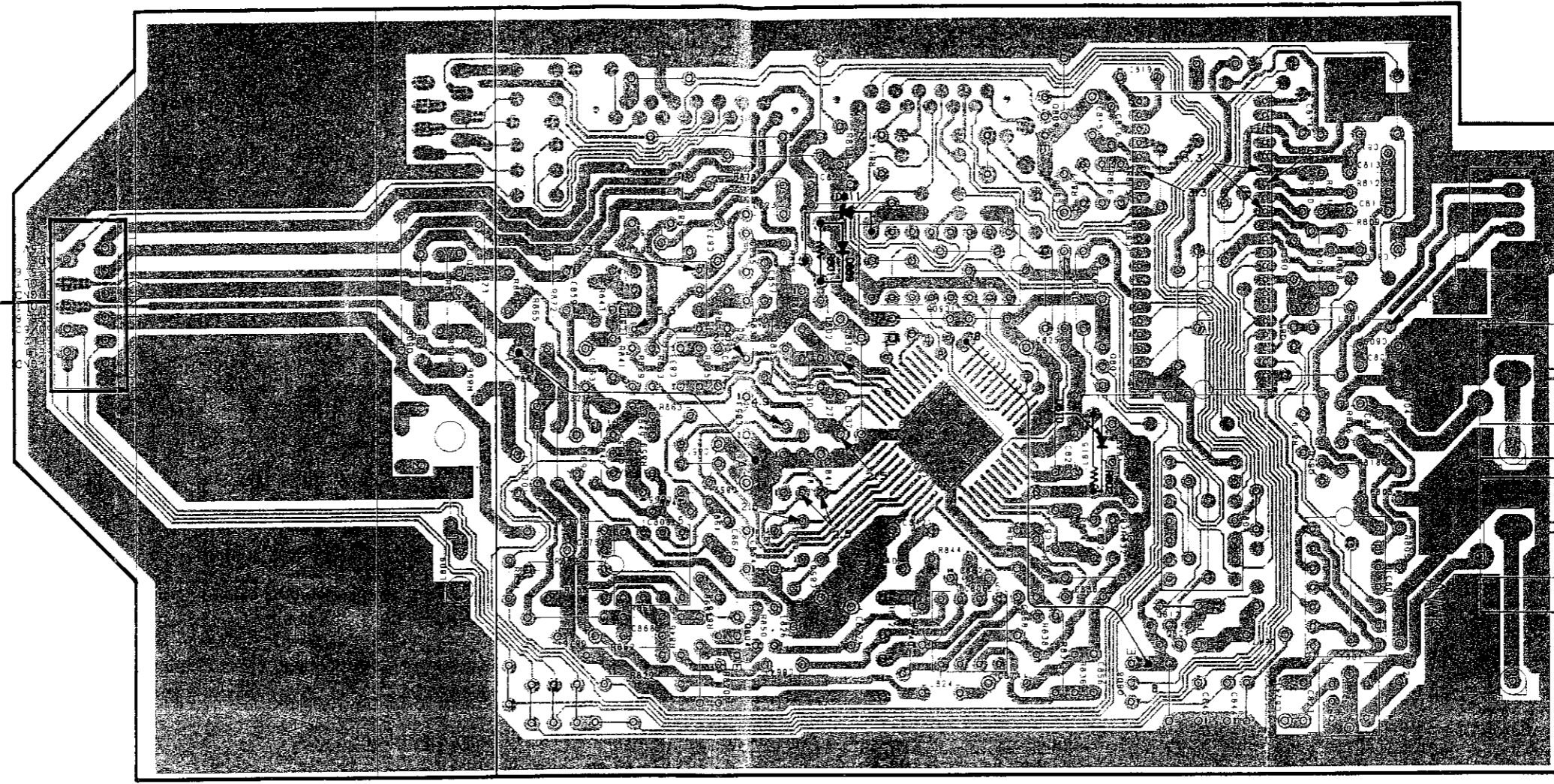
To AF assembly CN102
(To page 20)

To AF assembly CN103
(To page 20)

To AF assembly CN104
(To page 20)

DAC assembly (AWK1384)

To AF assembly J1
(To page 20)



Q806 Q807 Q805 IC807 IC803 Q809 Q802 IC802 Q811 Q810
IC808 Q804 IC805 IC806 Q808 IC804 IC801
Q812
Q801

NOTE

1. This PCB connection diagram is viewed from the parts mounted side.
2. The parts which have been mounted on the board can be replaced with those shown with the corresponding wiring symbols listed in the following Table.

P.C.B. pattern diagram indication	Corresponding part symbol	Part Name
		Transistor
		Resistor type transistor
		Diode
		Resistor
		Capacitor (Polarity)
		Capacitor (Non-polarity)

Others

P.C.B. pattern diagram indication	Part Name
IC	IC
S	Switch
RY	Relay
L	Coil
F	Filter
VR	Variable resistor or Semi-fixed resistor

3. The capacitor terminal marked with ⊖ (double circles) shows negative terminal.
4. The diode terminal marked with ⊖ (double circles) shows cathode side.
5. The transistor terminal to which E is affixed shows the emitter.

5. FOR HB AND HEWZIW TYPES

NOTES:

- Parts without part number cannot be supplied.
- Parts marked by "⊙" are not always kept in stock. Their delivery time may be longer than usual or they may be unavailable.
- The ⚠ mark found on some component parts indicates the importance of the safety factor of the part. Therefore, when replacing, be sure to use parts of identical designation.

CONTRAST OF MISCELLANEOUS PARTS

The A-Z370/HB and HEWZIW types are the same as the A-Z370/HE type with the exception of the following sections.

Mark	Symbol & Description	Part No.			Remarks
		HE type	HB type	HEWZIW type	
⊙	AF assembly	AWZ3402	AWZ3402	AWZ3405	
⊙	POWER assembly	AWZ2734	AWZ2734	AWZ2739	
	SP TERMINAL assembly	Non supply	Non supply	Non supply	
	POWER VR assembly	Non supply	Non supply	Non supply	
	HEAD PHONE assembly	Non supply	Non supply	Non supply	
	SUB TRANS assembly	Non supply	Non supply	Non supply	
	MIC assembly	Non supply	Non supply	Non supply	
⚠	AC power cord	ADG1019	ADG1087	ADG1012	
⚠	FU1 Fuse	AEK-403	AEK-512	AEK-403	
⚠	FU2.5 Fuse	AEK-017	AEK-511	AEK-017	
⚠	FU3.4 Fuse	AEK-405	AEK-510	AEK-405	
	Operating instructions (Dutch, Swedish, Spanish, Portuguese)	ARC1248	
	Operating instructions (English, German, French, Italian)	ARE1180	
	Operating instructions (English)	ARB1290	
	Operating instructions (German)	ARC1245	

AF assembly (AWZ3405)

The AF assembly(AWZ3405) is the same as the AF assembly(AWZ3402) with the exception of the following sections.

Mark	Symbol & Description	Part No.		Remarks
		AWZ3402	AWZ3405	
	C102, C103	CKDYF103Z50	CKDYF473Z50	
	C341-344, 347-349, 383, 386, 387	CKDYF473Z50	
	C345, 346	CQMA104K50	
	C351, 352	ACG1020	
	C353, 354, 357, 358, 361, 362	CKDYB331K50	
	C355, 356, 359, 360, 363, 364, 373-382	ACG1018	
	C384, 385	CKDYB391K50	
	R201, 202	RD1/8PM102J	RD1/8PM222J	

POWER assembly (AWZ2739)

The POWER assembly(AWZ2739) is the same as the POWER assembly(AWZ2734) with the exception of the following sections.

Mark	Symbol & Description	Part No.		Remarks
		AWZ2734	AWZ2739	
	C405, 406	CCDSL470J50	CCDSL221J50	
	C431, 432	CCDSL101K500	
	C433, 434	CCDSL101J50	
	C435, 436	CKDYB331K50	
	R425, R429, R430	RD1/8PM100J	

SP TERMINAL assembly

The SP TERMINAL assembly (HEWZIW type) is the same as the SP TERMINAL assembly (HE and HB types) with the exception of the following sections.

Mark	Symbol & Description	Part No.		Remarks
		HE, HB types	HEWZIW type	
	C365, 366	CFTXA103J50	
	C471-482	CQMXA103J100	
	L353, 354	ATH1002	

POWER VR assembly

The POWER VR assembly (HEWZIW type) is the same as the POWER VR assembly (HE and HB types) with the exception of the following sections.

Mark	Symbol & Description	Part No.		Remarks
		HE, HB types	HEWZIW type	
	C663-665	CKDYB103K50	
	C666, 667	CCDSL470J50	
	R700	RD1/8PM100J	

HEAD PHONE assembly

The HEAD PHONE assembly (HEWZIW type) is the same as the HEAD PHONE assembly (HE and HB types) with the exception of the following sections.

Mark	Symbol & Description	Part No.		Remarks
		HE, HB types	HEWZIW type	
	C369, 370	CKDYX473M25	

SUB TRANS assembly

The SUB TRANS assembly (HB type) is the same as the SUB TRANS assembly (HE and HEWZIW types) with the exception of the following sections.

Mark	Symbol & Description	Part No.		Remarks
		HE, HEWZIW types	HB type	
	AC socket (OUTLET 1P)	AKP1034	AKP1035	

MIC assembly

The MIC assembly (HEWZIW type) is the same as the MIC assembly (HE and HB types) with the exception of the following sections.

Mark	Symbol & Description	Part No.		Remarks
		HE, HB types	HEWZIW type	
	C371	ACG1020	
	C372	ACG1017	
	C604	ACG1017	ACG1020	
	L601	LAURS6M	
	R351	RD1/8PM222J	

AF assembly(AWZ3405)

1

2

3

4

5

6

IC201
IC202
IC206

TURNTABLE
DC 12V

PHONO

IC205
IC204

DAT
OUT

IC203
IC207

VCR
OUT

VCR
IN

IC301
IC101
IC302
IC105
IC303

LD
IN

Q103

Q102

Q106

Q104

Q105

TUNER

CD

CASSETTE
TAPE
DECK

Q108

Q107

Q101

Q552

Q551

Q553

GRAPHIC
EQUALIZER

1

2

3

4

5

6

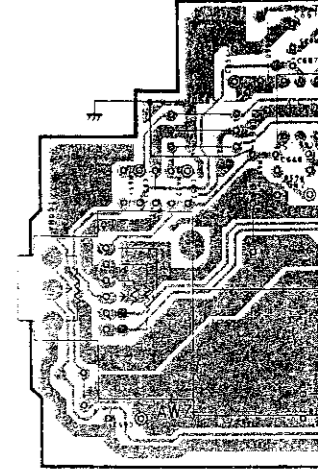
A

B

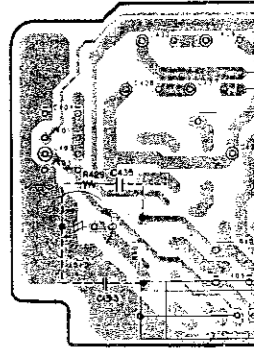
C

D

POWER VR c



POWER assembly (AW



AF assembly (AWZ3405)

To DAC assembly
CN1
(To page 32)

STANDBY

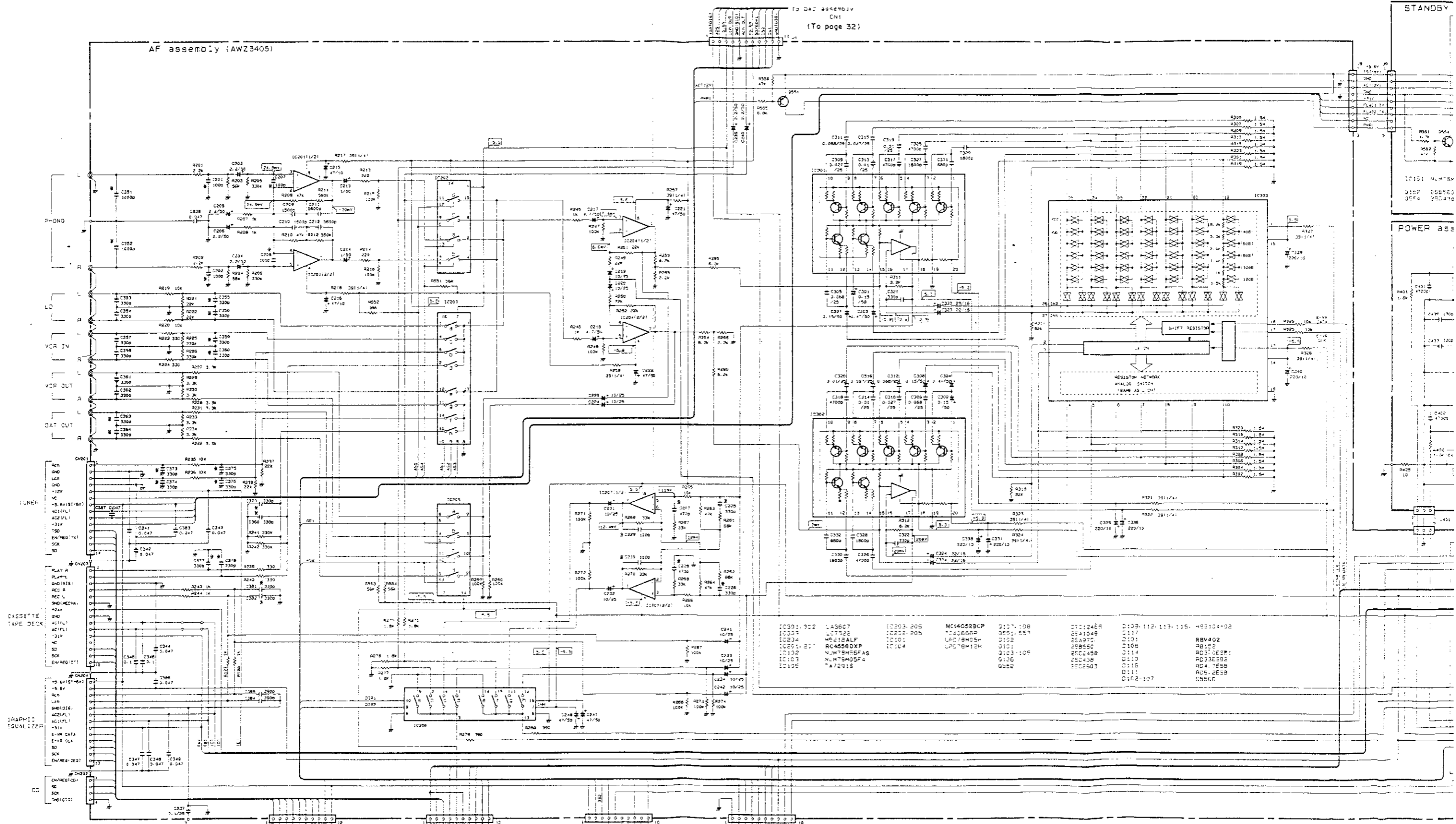
POWER ass

A

B

C

D

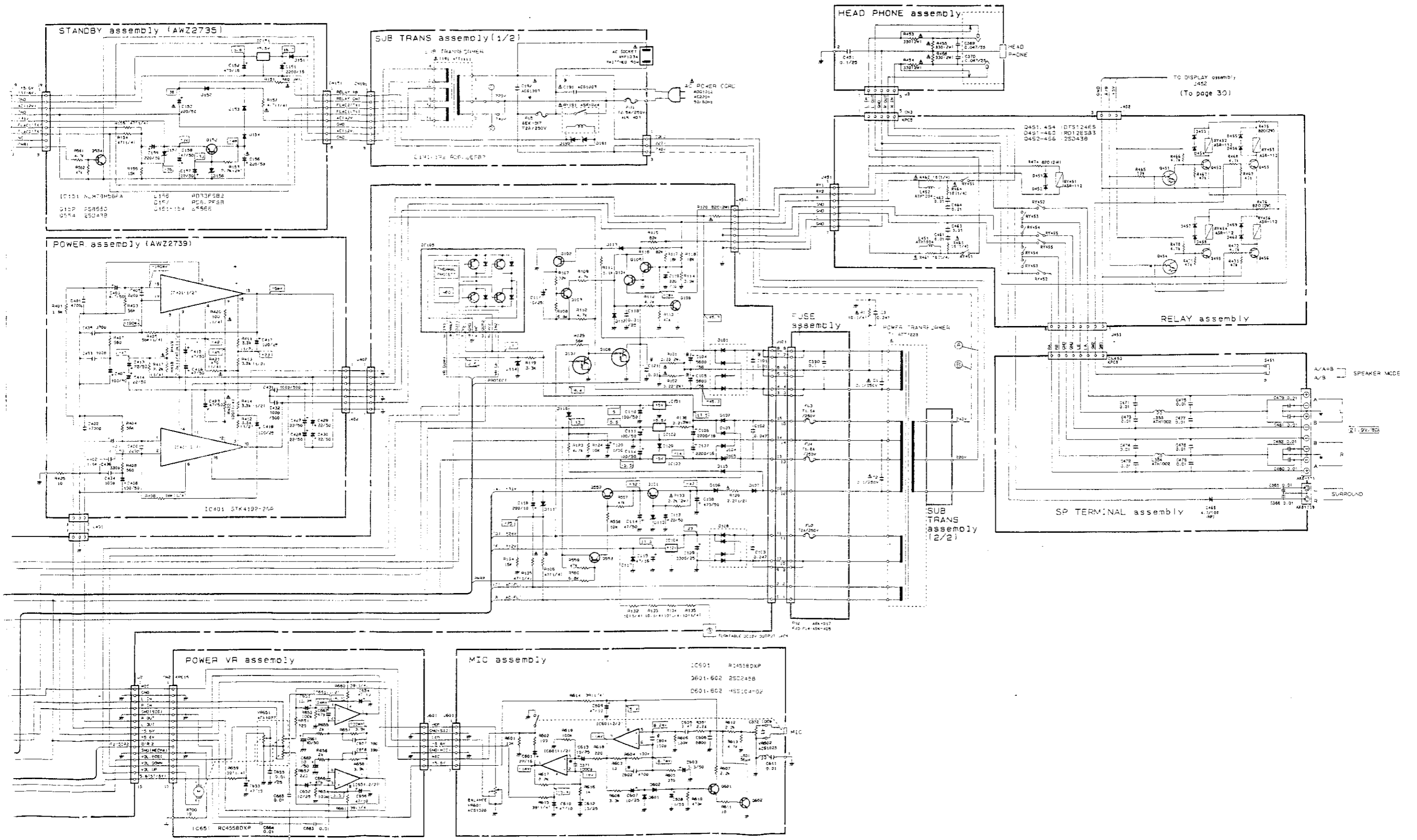


(To page 29)
To DISPLAY assembly
CN701

(To page 30)
To DISPLAY assembly
CN702

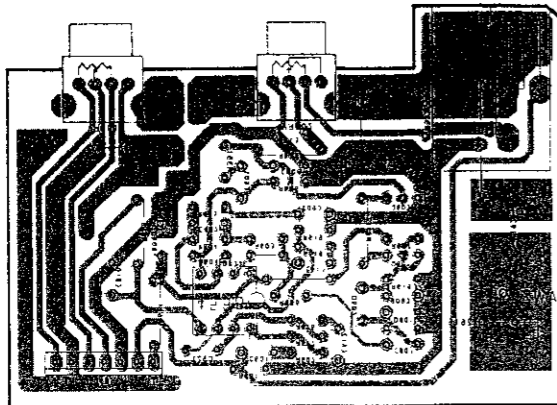
(To page 30)
To DISPLAY assembly
CN703

(To page 30)
To DISPLAY assembly
CN704



8

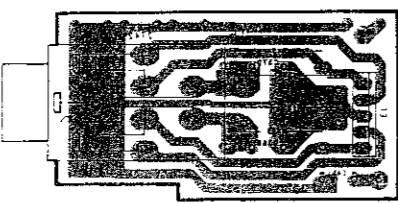
MIC assembly



A

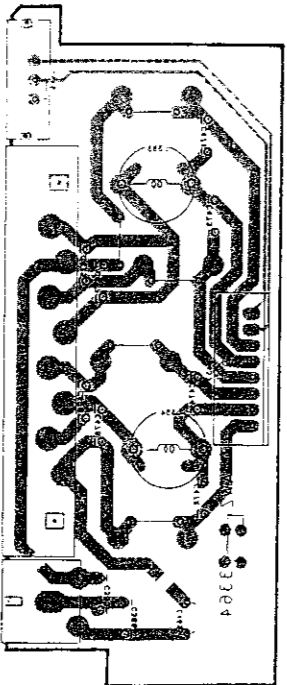
B

HEADPHONE assembly



C

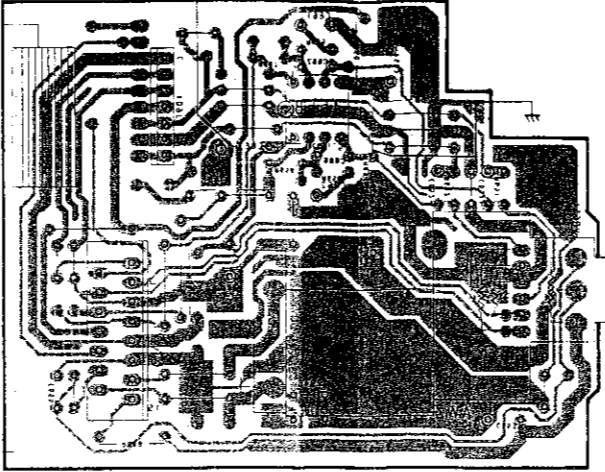
SP TERMINAL assembly



D

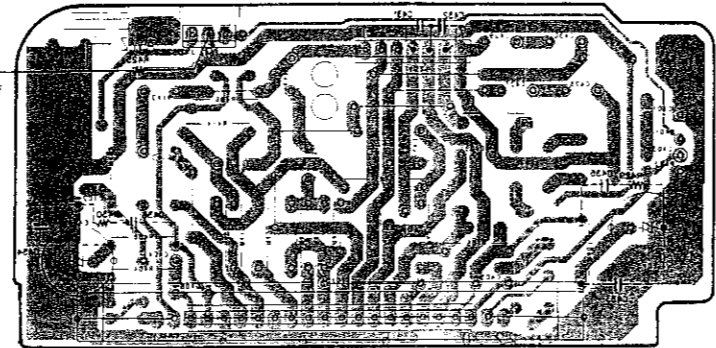
7

POWER VR assembly



6

POWER assembly (AW5230)

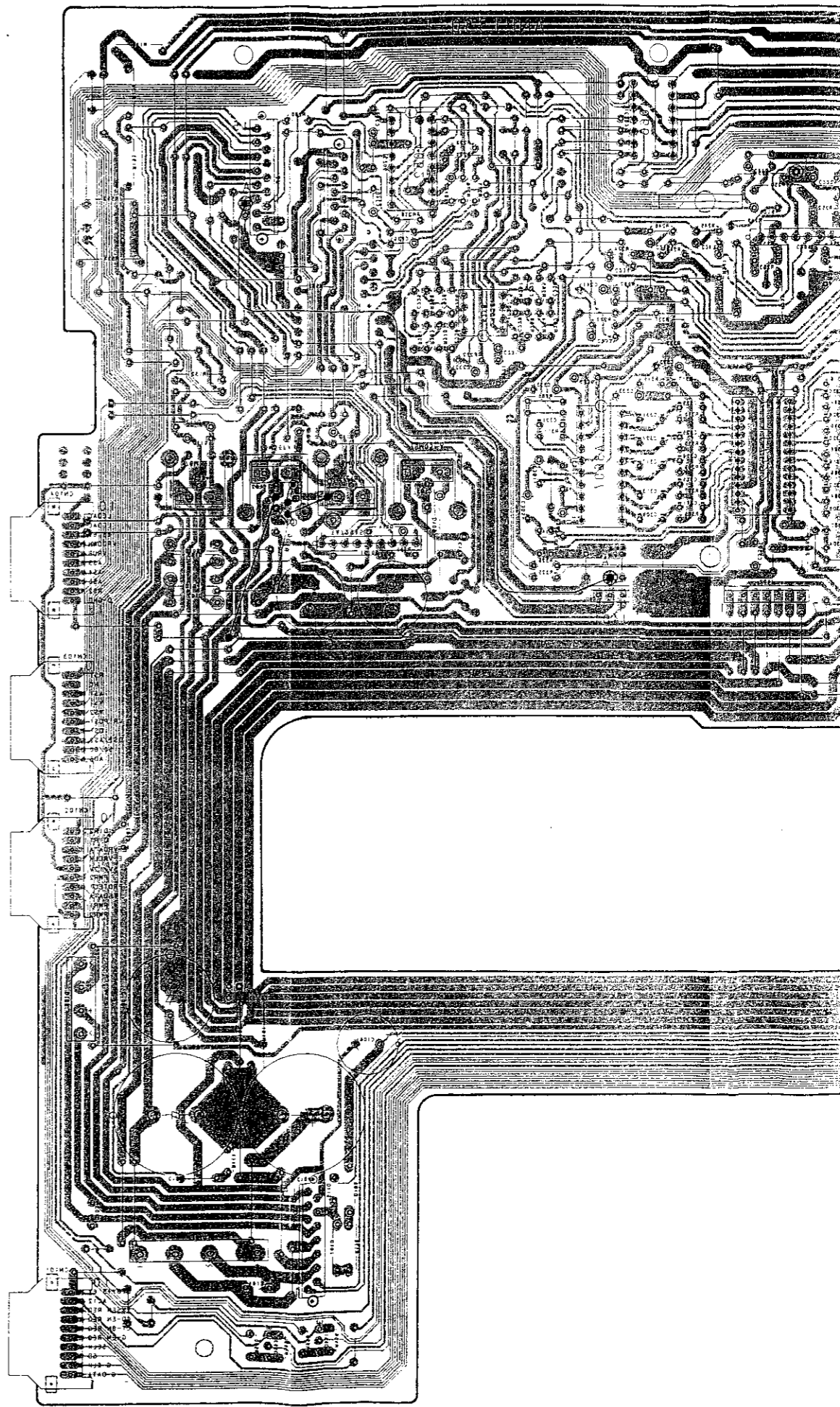


8

This P.C.B. connection diagram is viewed from the foil side.

2

4



2

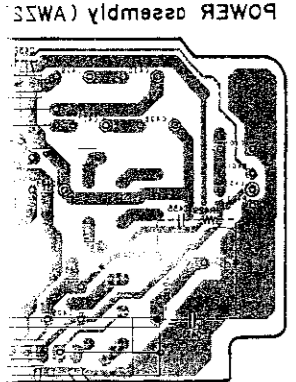
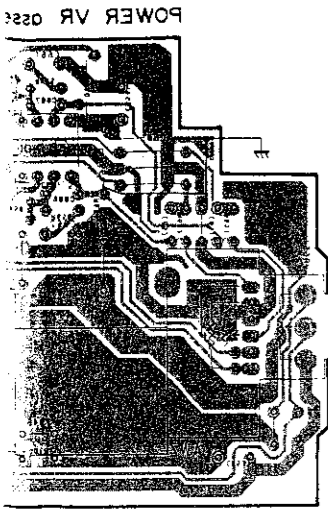
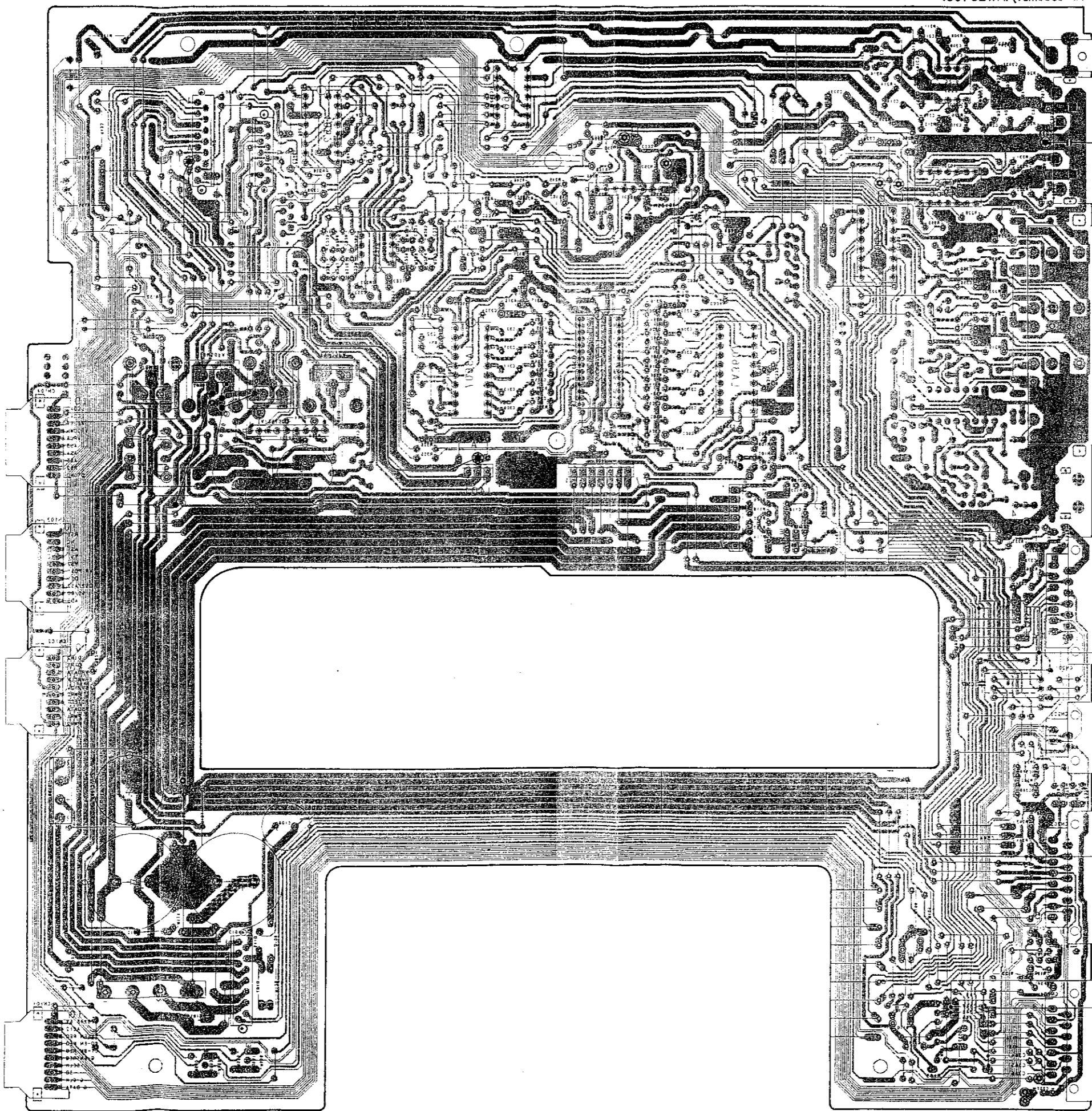
4

8

8

7

6



ed from the foil side.

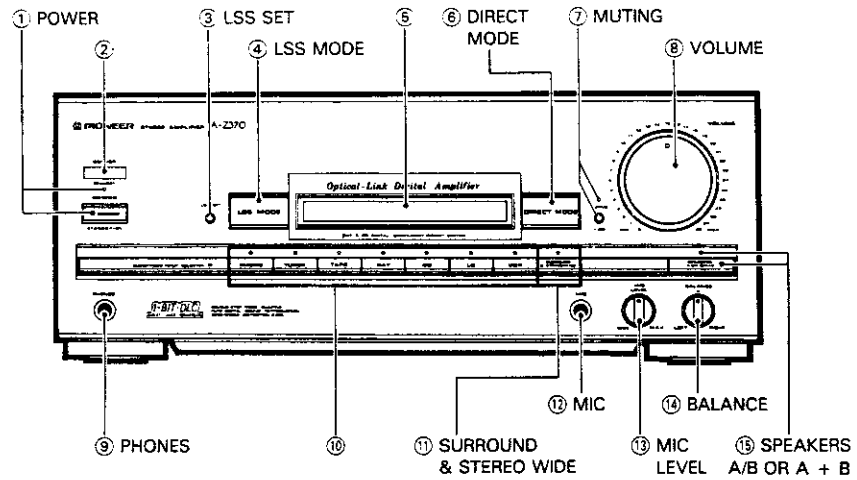
0223
0221
0225
0101
0107
0108
0102
0105
0102
1C909
1C108
1C305
1C101
1C901
1C303
1C304
1C308
1C305
1C301
TURNTABLE DC 15V
PHONO
OUT DAT
OUT VCR
IN VCR
LD
TUNER
CD
DECK TAPE
CASSETTE
EQUALIZER GRAPHIC

A
B
C
D

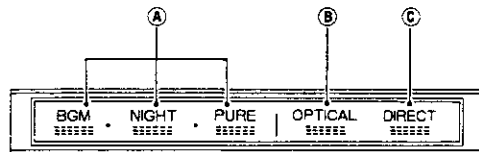
1
2
3
4
5
a
b

6. PANEL FACILITIES

Front panel



Display section



① POWER STANDBY/ON switch/indicator

This is the switch for electric power.

ON When set to the ON position, power is supplied and the unit becomes operational.

STANDBY When set to the STANDBY position, the main power flow is cut and the unit is no longer fully operational. A minute flow of power feeds the unit to maintain operation readiness.

The indicator above the switch lights when the power is STANDBY, and goes out during ON.

② Remote sensor**③ LSS SET button**

Use to operate the Listening Style Selector memory.

④ LSS MODE button

Use to recall the Listening Style Selector.

⑤ Display section

④ This shows the position of the listening style selector.

⑤ This lights when you play a CD.

⑥ This lights when you can select CD and DAT direct mode.

⑧ DIRECT MODE button

Use this when you want by-pass sound quality adjustment circuitry and listen to a CD or DAT in the direct mode.

⑦ MUTING button/indicator

Use when you want to temporarily cut sound during playback. Press again to return to the previous volume level.

⑧ VOLUME control**⑨ PHONES jack**

For stereo headphones.

NOTE:

There is no output from the speakers when headphones are plugged into PHONES jack.

⑩ Input selector buttons/indicators**[PHONO]**

Press to play records on a turntable connected to the PHONO input jacks.

[TUNER]

Press to listen to radio broadcast.

[TAPE]

Press to listen to cassette tape.

[DAT]

Press to listen to a DAT playing on a digital audio tape deck connected to the DAT jacks.

[CD]

Press to listen to compact disc.

[LD]

Press to play an LD on a video disc player connected to the LD input jacks.

[VCR]

Press to play a tape on a video cassette recorder connected to the VCR jacks.

⑪ SURROUND & STEREO WIDE button/indicator

By turning this button on, you can enjoy surround reproduction when rear speakers are used.

By turning this button on, you can enjoy STEREO WIDE reproduction with greater left-right spread when rear speakers are not used.

NOTE:

- In the case of a monaural source, SURROUND & STEREO WIDE effects cannot be obtained.
- SURROUND & STEREO WIDE functions do not operate if DIRECT MODE is on.

⑫ MIC (microphone) jack

This is a standard jack for connecting a microphone.

NOTE:

Mike mixing is not possible when CD DIRECT or DAT DIRECT are ON.

⑬ MIC LEVEL control

Used for adjusting the volume of microphone.

⑭ BALANCE control

Used for changing the balance between left and right channels. Usually set to the center position.

⑮ SPEAKERS button (A/ B OR A + B)/indicator

When the SPEAKER MODE selector switch on the rear panel is set to the A/B (left), use this button to switch between sound from speakers A only, and sound from speakers B only.

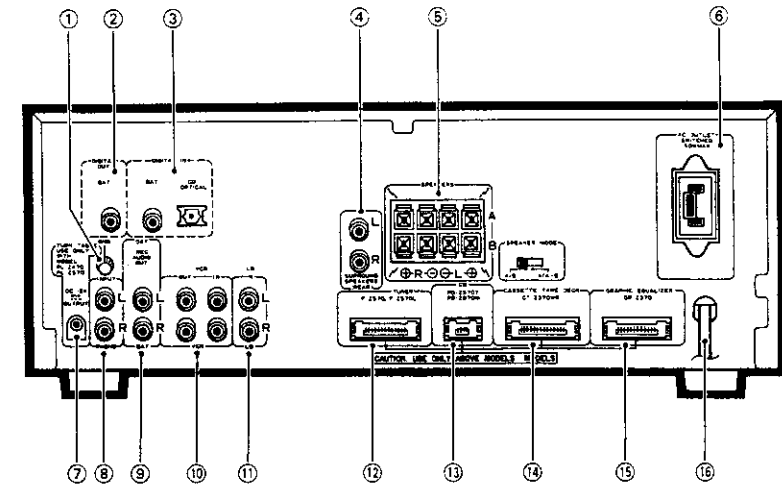
When the SPEAKER MODE selector switch is set to the A/A + B (right), use this button to switch between sound from speakers A only, and sound from both speakers A and B.

Refer to page 18 No.⑤ concerning SPEAKER MODE selector switch.

Rear panel SPEAKER MODE switch	SPEAKERS	
	Indicator off	Indicator lit
A/B	A	B
A/A + B	A	A + B

NOTE:

If speakers A and B are not both connected, there will be no sound when the button is set for A + B.

REAR PANEL FACILITIES

① Ground terminal (GND)

Connect this to the ground terminal on the turntable (except for PL-Z470/PL-Z570).

② DIGITAL OUT (DAT) jack

Outputs digital signal taken from CD player optical input. A digital audio tape deck's digital input jack (coaxial cable input) can be connected here. Consult with your dealer to see if it's possible to connect your digital audio tape deck.

③ DIGITAL IN jacks

[DAT] A digital audio tape deck's digital output jack (coaxial cable output) can be connected here. Consult with your dealer to see if it's possible to connect your digital audio tape deck.

[CD] Connect a CD player's OPTICAL OUT jack.

④ SURROUND SPEAKERS jacks

Connect the Surround speaker systems.

NOTE: Connect a speaker system having a nominal impedance of 16 Ω or more.

⑤ SPEAKERS terminals and SPEAKER MODE selector switch

A: Connect to a first set of speakers
B: Connect to a second set of speakers
Set the selector switch to the A/B (left), and use the SPEAKERS button on the front panel to switch between sound from speakers A only, and sound from speakers B only.
If you set the selector switch to the A/A + B (right), use the SPEAKERS button on the front panel to switch between sound from speakers A only, and sound from both speakers A and B.

NOTE: Connect a speaker system having a nominal impedance ranging from 8 Ω to 16 Ω.

⑥ AC OUTLET (SWITCHED 50 W MAX)

Power supplied through this outlet is turned on and off by the amplifier's POWER switch. Total electrical power consumption of connected equipment should not exceed 50 W. PD-Z570T or PD-Z970M CD player power cord can be connected.

NOTE: Do not connect appliances with high power consumption such as heaters, irons, or television sets to the AC OUTLET in order to avoid overheating or fire risk. This can cause the amplifier to malfunction.

⑦ TURNTABLE (DC 12 V OUTPUT) jack

This jack supplies power to the turntable. (PL-Z470/PL-Z570)

⑧ PHONO input jacks

Connect the output cord of the turntable to these jacks.

⑨ DAT REC OUT jacks

Connect to audio input jacks of the digital audio tape deck.

⑩ VCR jacks

IN: Connect to the audio output jacks of VCR.
OUT: Connect to audio input jacks of VCR.

⑪ LD input jacks

Connect to audio output jacks of the LD player.

⑫ TUNER jack

Connect the tuner cord here.

⑬ CD jack

Connect the compact disc player (PD-Z570T/PD-Z970M) cord here.

⑭ CASSETTE TAPE DECK jack

Connect the cassette deck cord here.

⑮ GRAPHIC EQUALIZER jack

Connect the graphic equalizer cord here.

⑯ Power cord

Connect this to the AC wall socket.

Service Manual



ORDER NO.
ARP2183

STEREO AMPLIFIER

A-Z370 SD

- Refer to the service manual ARP2158,A-Z370/HE.
- This manual is applicable to A-Z370/SD type.
- This product is a component of a system. As to the system composition, refer to the system manual.
- This product does not function properly when independent ; to avoid malfunctions, be sure to connect it to the prescribed system component, otherwise damage may result.

1. CONTRAST OF MISCELLANEOUS PARTS

- NOTES:
- Parts without part number cannot be supplied.
 - Parts marked by "●" are not always kept in stock. Their delivery time may be longer than usual or they may be unavailable.
 - The Δ mark found on some component parts indicates the importance of the safety factor of the part. Therefore, when replacing, be sure to use parts of identical designation.

The A-Z370/SD type is the same as the A-Z370/HE type with the exception of the following sections.

Mark	Symbol & Description	Part No.		Remarks
		A-Z370/HE type	A-Z370/SD type	
●	AF assembly SUB TRANS assembly	AWZ3402 Non supply	AWZ3507 Non supply	
Δ	AC Power cord	ADG1019	ADG1051	
Δ	T1 Power transformer	ATS1223	ATS1340	
Δ	FU6 Fuse	AEK-017	
	S1 Voltage select switch	AKX-507	
	S2 Voltage select switch	AKX1004	
	Operating instructions (Dutch, Swedish, Spanish, Portuguese)	ARC1248	
	Operating instructions (English, German, French, Italian)	ARE1180	
	Operating instructions (English)	ARB1290	
	Operating instructions (Spanish)	ARC1246	

PIONEER ELECTRONIC CORPORATION 4-1, Meguro 1-Chome, Meguro-ku, Tokyo 153, Japan
PIONEER ELECTRONICS SERVICE INC. P.O. Box 1780, Long Beach, California 90801 U.S.A.
PIONEER ELECTRONICS OF CANADA, INC. 505 Cochrane Drive, Markham, Ontario L3R 8E3 Canada
PIONEER ELECTRONIC [EUROPE] N.V. Keetberglaan 1, 2740 Beveren, Belgium
PIONEER ELECTRONICS AUSTRALIA PTY. LTD. 178-184 Boundary Road, Braeside, Victoria 3195, Australia TEL: [03] 580-9911
© PIONEER ELECTRONIC CORPORATION 1991 FV FEB. 1991 Printed in Japan

AF assembly(AWZ3507)

The AF assembly(AWZ3507) is the same as the AF assembly(AWZ3402) with the exception of the following sections.

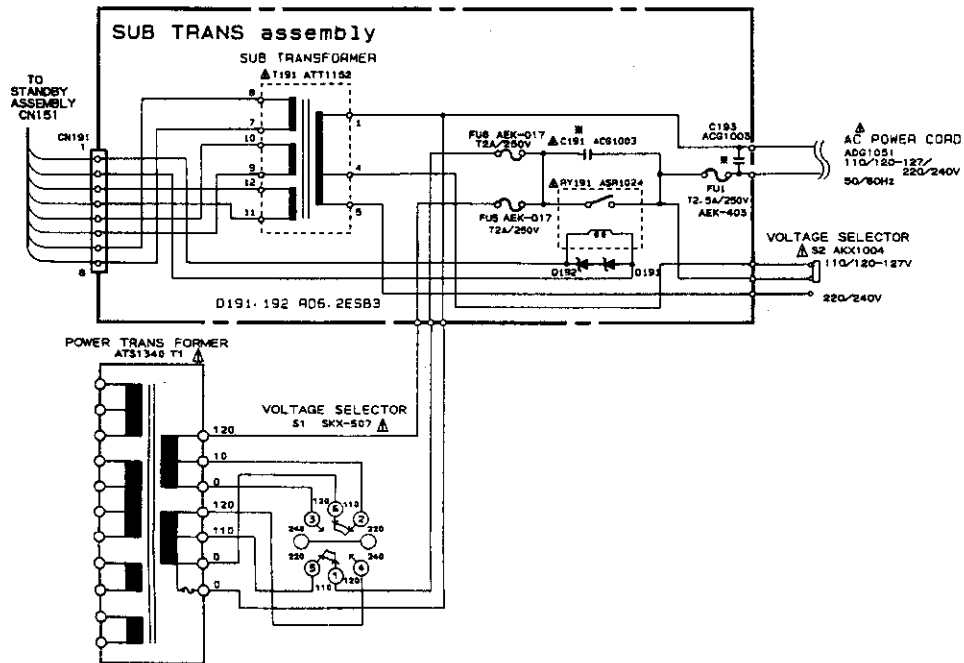
Mark	Symbol & Description	Part No.		Remarks
		AWZ3402	AWZ3507	
R111		RD1/8PM112J	RD1/8PM152J	

SUB TRANS assembly

The SUB TRANS assembly (SD type) is the same as the SUB TRANS assembly (HE type) with the exception of the following sections.

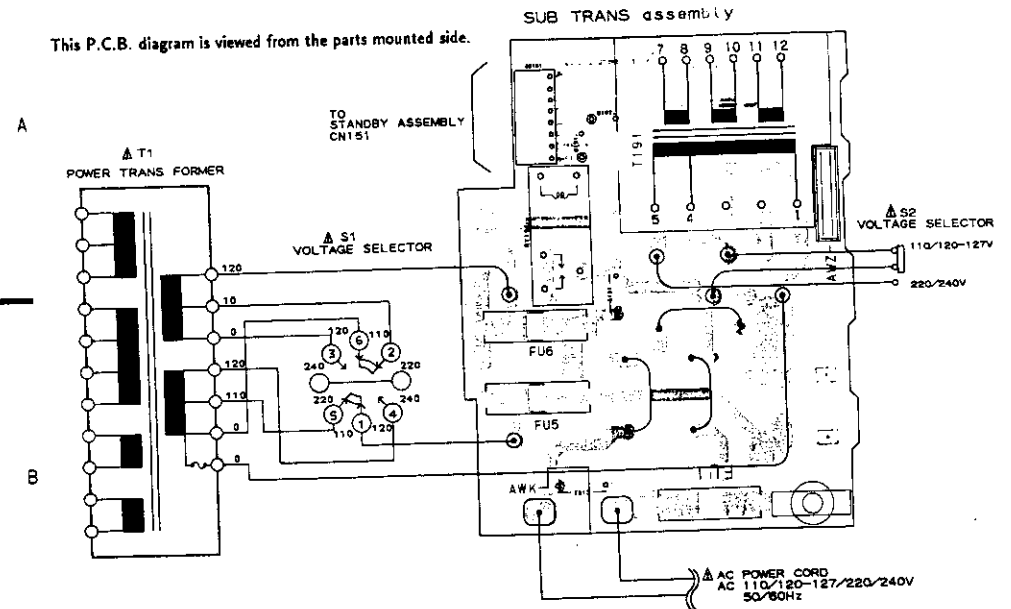
Mark	Symbol & Description	Part No.		Remarks
		HE type	SD type	
C192(0.01/AC 400V)		ACG1003	
C193(0.01/AC 400V)		ACG1003	
T191		ATT1115	ATT1152	
AC socket (OUTLET 1P)		AKP1034	

2. SCHEMATIC DIAGRAM



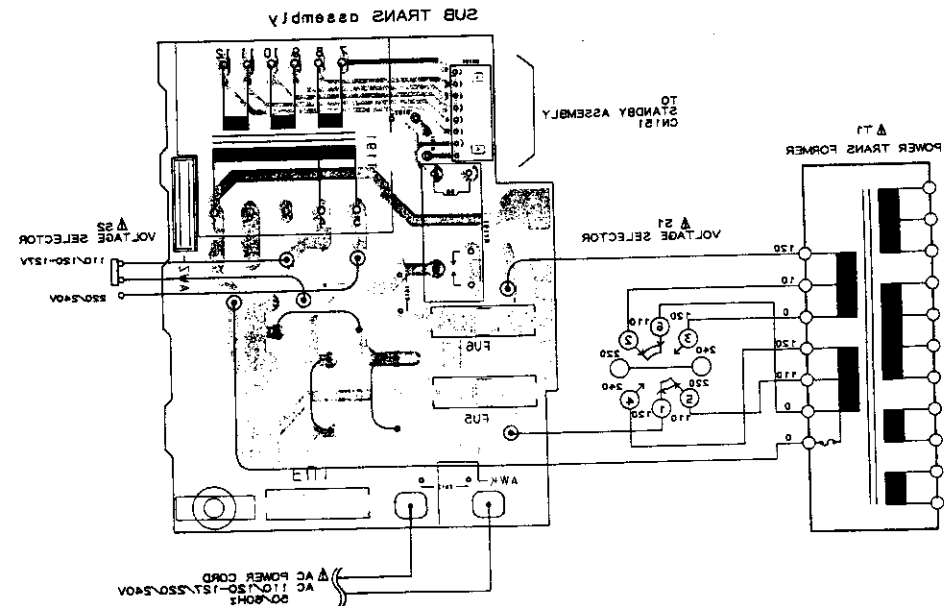
3. P.C.BOARD DIAGRAM

This P.C.B. diagram is viewed from the parts mounted side.



C

D



This P.C.B. diagram is viewed from the foil side.