

# *Service Manual*

**ORDER NO.  
ARP1618**

**LASER JUKE SYSTEM RACK**

# **CB-V2520<sup>E</sup>**

# **CB-V2520-K<sup>E</sup>**

## **SPECIFICATIONS**

Outside dimensions . . . . 643 (W) x 813 (H) x 375 (D) mm  
25-5/6 (W) x 32 (H) x 14-3/4 (D) in  
Weight . . . . . 20 kg (44 lbs 2 oz)  
Material . . . . . Particleboard

CB-V2520  
CB-V2520-K

# EXPLODED VIEW AND PARTS LIST

Exploded View

A

B

C

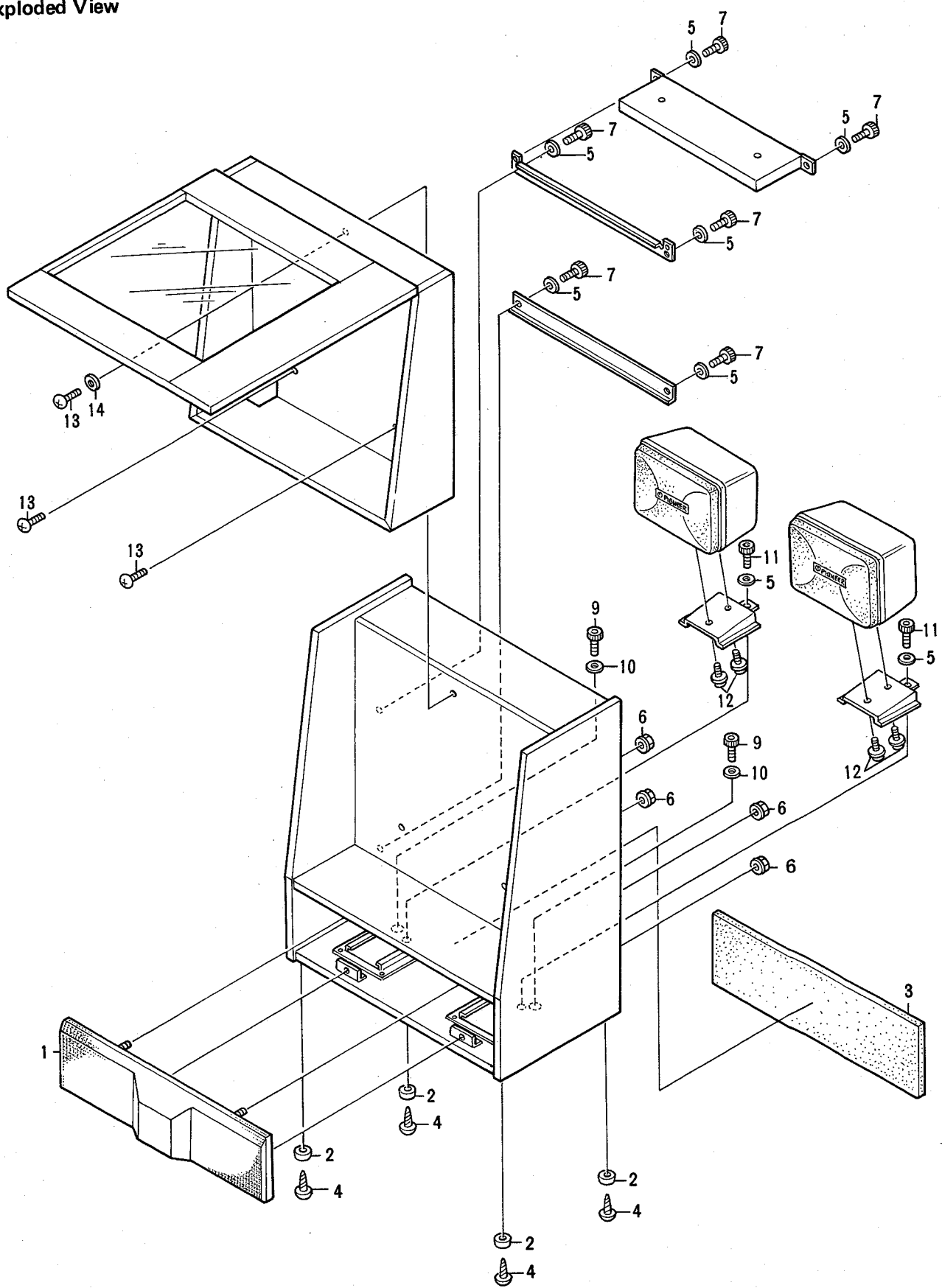
D

A

B

C

D



2

1

2

3

**NOTES:**

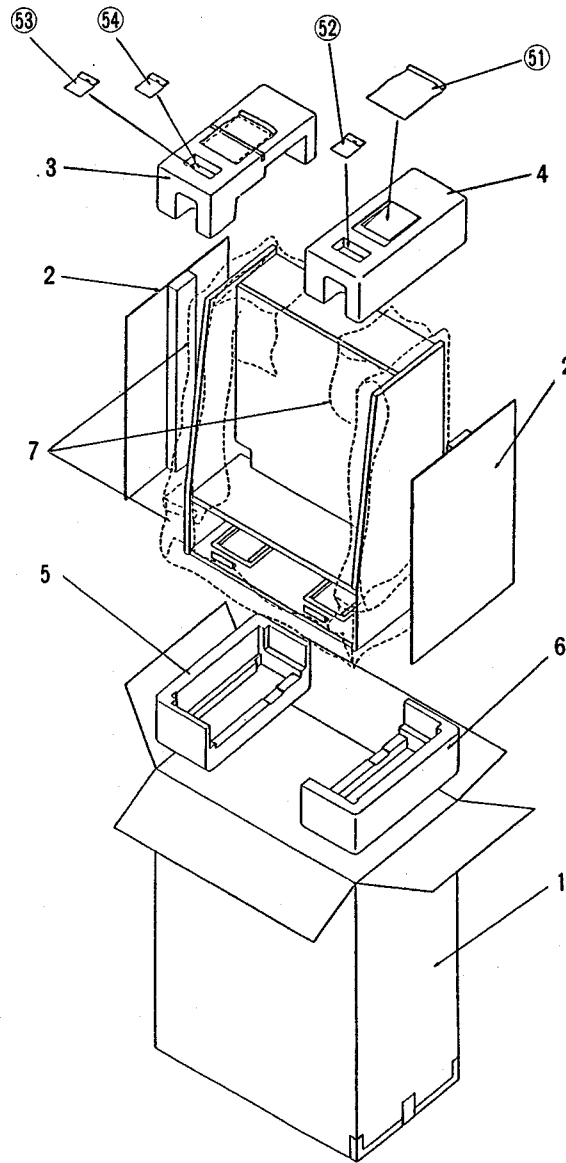
- Parts without part number cannot be supplied.
- The  $\Delta$  mark found on some component parts indicates the importance of the safety factor of the part. Therefore, when replacing, be sure to use parts of identical designation.
- Parts marked by "⊙" are not always kept in stock. Their delivery time may be longer than usual or they may be unavailable.

**Parts List**

Mark	No.	Part No.	Description	Mark	No.	Part No.	Description
	1	SMA1711	Grille assembly		11	SMZ40H200FZB	Screw D
	2	SXK1006	Leg		12	PMB50P120FZB	Screw C
	3	SMV1163	Absorbent cover		13	TMZ80P300FMC	Screw E
	4	RWC35P160FMC	Screw		14	SBE-007	Washer C
	5	SBE-012	Washer A				
	6	NF40FZB	Nut				
	7	SMZ40H120FZB	Screw A				
	8	SNA1053	Speaker mounting bracket				
	9	SMZ60H300FZB	Screw B				
	10	WA65F180K160	Washer B				

# PACKING VIEW AND PARTS LIST

## Packing View



### Parts List

Mark	No.	Part No.	Description	Mark	No.	Part No.	Description
	1	SHH1073	Packing case (For CB-V2520-K)		51		Speaker mounting bracket set
		SHH1074	Packing case (For CB-V2520)		52		Screw bag set A
	2	SHC1134	Spacer		53		Screw bag set B
	3	SHA1183	Upper pad L		54		Screw bag set C
	4	SHA1184	Upper pad R				
	5	SHA1185	Under pad L				
	6	SHA1186	Under pad R				
	7	SHC-937	Protection mat				