

Service Manual

**ORDER NO.
ARP1248-A**

SPEAKER SYSTEM

CS-907
CS-707
CS-607

G, E

G, E, US

G, E, US

(CS-607)

1. REMOVAL METHOD

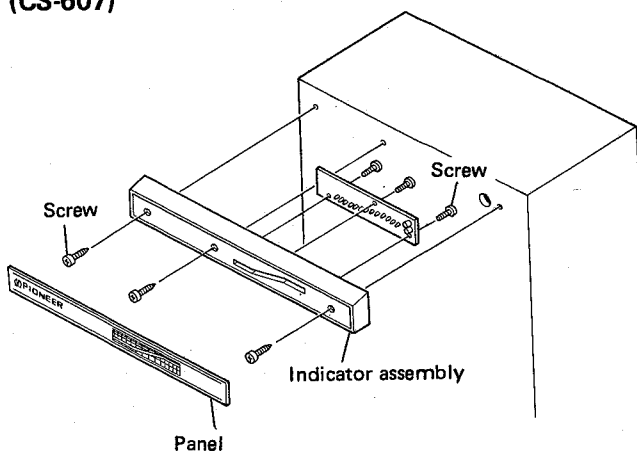
(CS-907, CS-707, CS-607)

• Woofer and Network Assembly

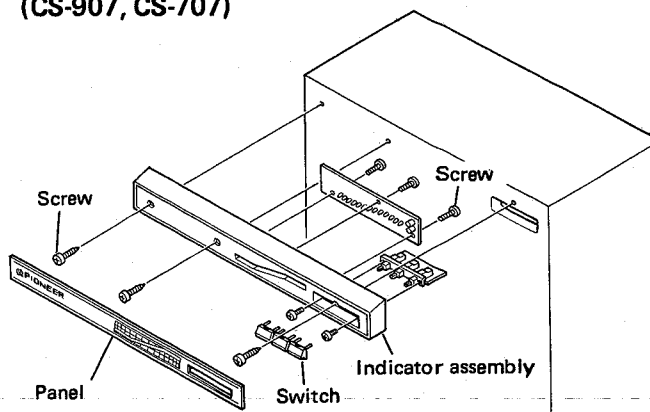
1. Remove the grille.
Grasp both ends of the top part of the grille and pull out on it to remove.
2. The woofer can be removed by undoing the 8 screws (Phillips screwdriver needed) and 8 bolts (socket wrench needed).
3. The network assembly can be taken out after removing the woofer.

• Indicator Assembly

1. Use a small screwdriver or punch-like instrument to remove the panel. Then undo the 3 screws and take off the indicator assembly.
After repairing it, attach it to a new panel.



(CS-907, CS-707)

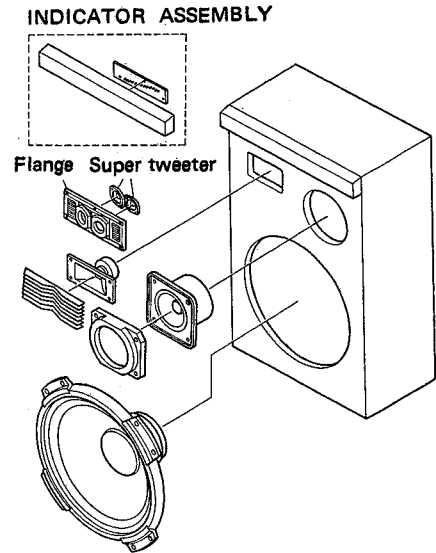
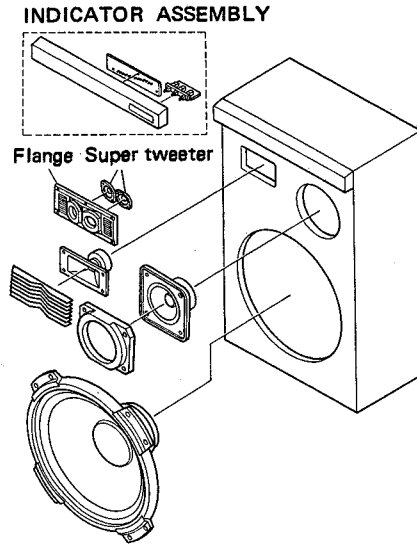
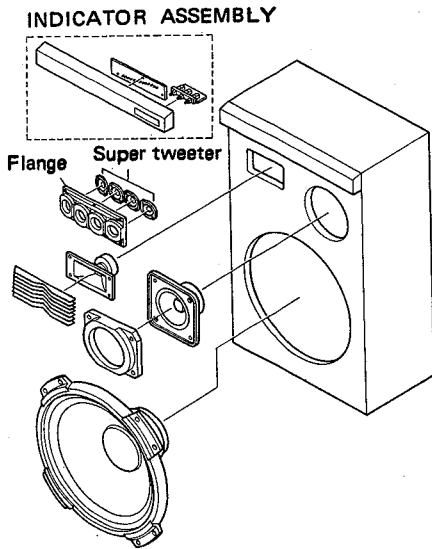


2. EXPLODED VIEW AND PARTS LIST

Exploded View of CS-907/E,G

Exploded View of CS-707/E,US

Exploded View of CS-607/E,G,US



Replace the super tweeter together with the flange.
(The super tweeter and flange are heat sealed together.)

NOTE:

The parts installation locations and their sizes vary according to each model.

CS-907: 4-way, 7-speaker system
CS-707: 4-way, 5-speaker system
CS-607: 4-way, 5-speaker system

NOTES:

- Parts without part number cannot be supplied.
- The Δ mark found on some component parts indicates the importance of the safety factor of the part. Therefore, when replacing, be sure to use parts of identical designation.
- For your Parts Stock Control, the fast moving items are indicated with the marks **★★** and **★**.
★★ GENERALLY MOVES FASTER THAN ★
This classification shall be adjusted by each distributor because it depends on model number, temperature, humidity, etc.
- Parts marked by "⊙" are not always kept in stock. Their delivery time may be longer than usual or they may be unavailable.

Parts List of CS-907/E, G

Mark	Part No.	Description	Mark	Part No.	Description
⊙	SMG-438	Grille		SAA-069	Knob
	SWN-529	Network assembly		PMZ30P050FMC	Screw
	SAX-372	Panel		PTZ30P100FMC	Screw
	SNK-909	Mid-flange	★★	40-810A	Speaker (Woofer)
	SNK-911	Diffuser	★★	16-753A	Speaker (Mid-range)
★★	SNK-910	Flange	★★	PD-009A	Speaker (Driver)
	B42ZG	Speaker (Super tweeter)		SBA-133	Screw (For installing the mid-range, the super tweeter and the tweeter)
	SEP-032	Bushing		RWC38P450FMC	Screw
	SKX-029	Input terminal plate		SBA-215	Screw (For fixing the woofer edges)
	SFH-025	Horn			

Parts List of CS-707/E, G, US

Mark	Part No.	Description
⊙	SMG-438	Grille
	SWN-530	Network assembly
	SAX-373	Panel
	SNK-906	Mid-flange
	SNK-907	Flange
★★	B42ZG	Speaker (Super tweeter)
	SNK-911	Diffuser
	SKX-029	Input terminal plate
	SEP-032	Bushing
	SFH-025	Horn
	SAA-069	Knob
	PMZ30P050FMC	Screw
	PTZ30P100FMC	Screw
★★	40-810A	Speaker (Woofer)
★★	12-749A	Speaker (Mid-range)
★★	PD-009A	Speaker (Driver)
	SBA-133	Screw (For installing the mid-range, the tweeter and the super tweeter), (For installing the woofer of G type)
	SBA-204	Screw (For installing the woofer of E, US type)
	RWC38P450FMC	Screw
	SBA-215	Screw (For fixing the woofer edges)

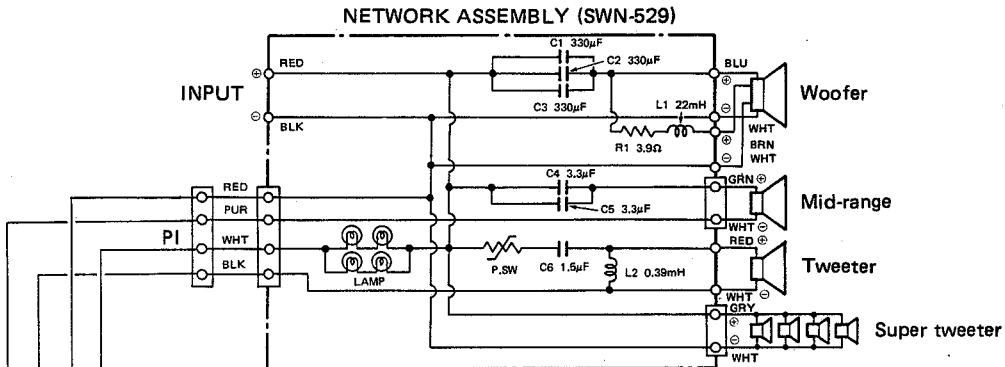
Parts List of CS-607/E, G, US

Mark	Part No.	Description
	SMG-439	Grille
	SAX-374	Panel
⊙	SWN-531	Network assembly
	SNK-906	Mid-flange
	SNK-907	Flange
★★	B42ZG	Speaker (Super tweeter)
	SNK-911	Diffuser
	SKX-029	Input terminal plate
	SEP-032	Bushing
	SFH-025	Horn
	PTZ30P100FMC	Screw
★★	30-789A	Speaker (Woofer)
★★	12-749A	Speaker (Mid-range)
★★	PD-009A	Speaker (Driver)
	SBA-133	Screw (For installing the woofer, the mid-range, the super tweeter and the tweeter)
	SBA1004	Screw (For fixing the woofer edges)
	RWC38P450FMC	Screw

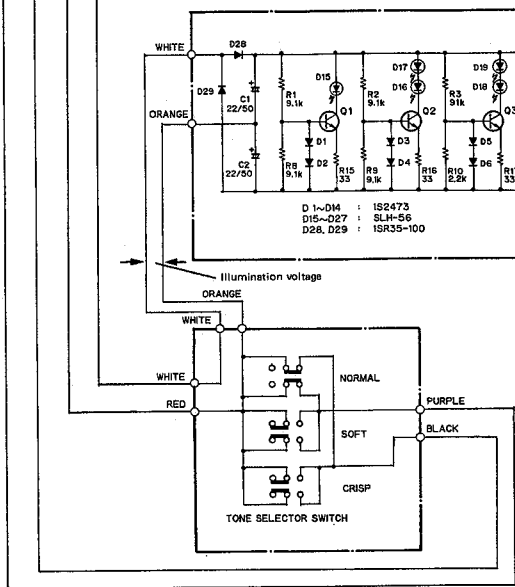
3. CIRCUIT DIAGRAM AND PARTS LIST

3.1 CS-907/E, G

Circuit Diagram of Network Assembly



Circuit Diagram of Power Indicator Assembly (SWX-131)



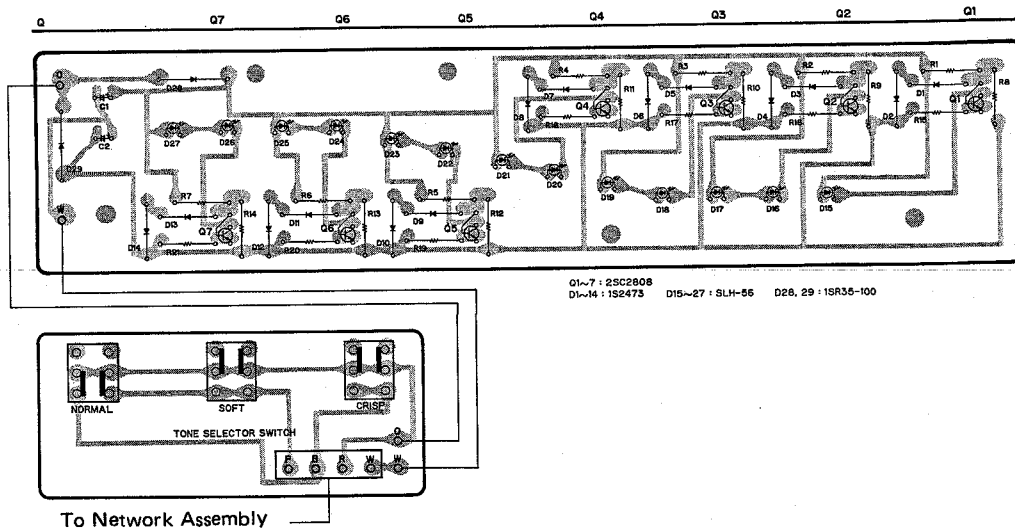
Power Indicator Illumination Voltage

L.E.D. No.	1	2,3	4,5	6,7	8,9	10,11	12,13
Illumination voltage	1V	2.6V	2.6V	6.6V	11V	14.3	18.0V

Measurement conditions

- Input is 60Hz sine wave.

P.C.B. Pattern of Power Indicator Assembly (SWX-131)



Parts List of CS-907/E, G

NOTES:

- Parts without part number cannot be supplied.
- The Δ mark found on some component parts indicates the importance of the safety factor of the part. Therefore, when replacing, be sure to use parts of identical designation.
- For your Parts Stock Control, the fast moving items are indicated with the marks **★★** and **★**.
★★ GENERALLY MOVES FASTER THAN ★
 This classification shall be adjusted by each distributor because it depends on model number, temperature, humidity, etc.
- Parts marked by "⊙" are not always kept in stock. Their delivery time may be longer than usual or they may be unavailable.

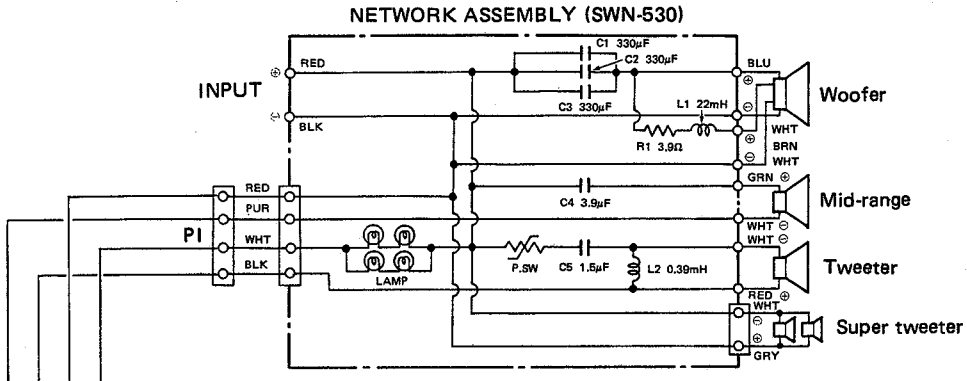
Network Assembly (SWN-529)

Mark	Symbol & Description	Part No.
	L1 Choke coil (22 mH)	
	L2 Choke coil (0.39 mH)	
	C1, C2, C3 Capacitor (330 μ F)	CES4SM331KH
	C4, C5 Capacitor (3.3 μ F)	CES43R3KJ
	C6 Capacitor (1.5 μ F)	CES41R5KJ
	R1 Resistor (3.9 Ω , 5W)	RTF5AL3R9JC
	Wedge-base bulb	SEL-011
★★	Poly switch	SSG-020

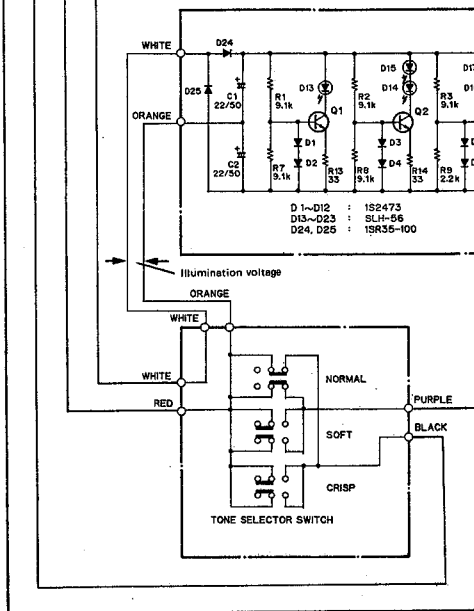
Power Indicator Assembly (SWX-131)

Mark	Symbol & Description	Part No.
★★	Q1-Q7 Transistor	2SC2808
★	D1-D14 Diode	1S2473HS
★	D15-D27 Diode	SLH-56MC
★	D28, D29 Diode	1SR35-100HO
	C1, C2 Capacitor	CEA220M50
	R1-R9	RD1/4PM912J
	R10	RD1/4PM222J
	R11	RD1/4PM112J
	R12	RD1/4PM561J
	R13	RD1/4PM471J
	R14	RD1/4PM361J
	R15-R21	RD1/4PM330J
★★	Switch (TONE SELECTOR) (NORMAL-SOFT-CLIP)	SSG-019

3.2 CS-707/E, G, US
Circuit Diagram of Network Assembly



Circuit Diagram of Power Indicator Assembly (SWX-132)



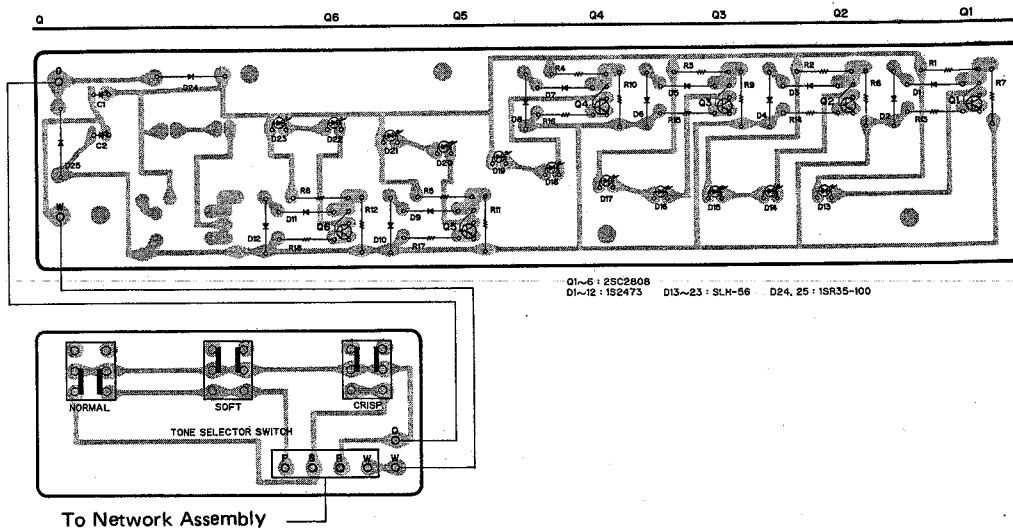
Power Indicator Illumination Voltage

L.E.D. No.	1	2,3	4,5	6,7	8,9	10,11
Illumination voltage	1V	2.3V	2.3V	5.1V	10V	13V

Measurement conditions

- Input is 60Hz sine wave.

P.C.B. Pattern of Power Indicator Assembly (SWX-132)



Parts List of CS-707/E, G, US

NOTES:

- *Parts without part number cannot be supplied.*
- *The Δ mark found on some component parts indicates the importance of the safety factor of the part. Therefore, when replacing, be sure to use parts of identical designation.*
- *For your Parts Stock Control, the fast moving items are indicated with the marks **★★** and **★**.*
★★ GENERALLY MOVES FASTER THAN ★
- *This classification shall be adjusted by each distributor because it depends on model number, temperature, humidity, etc.*
- *Parts marked by "⊙" are not always kept in stock. Their delivery time may be longer than usual or they may be unavailable.*

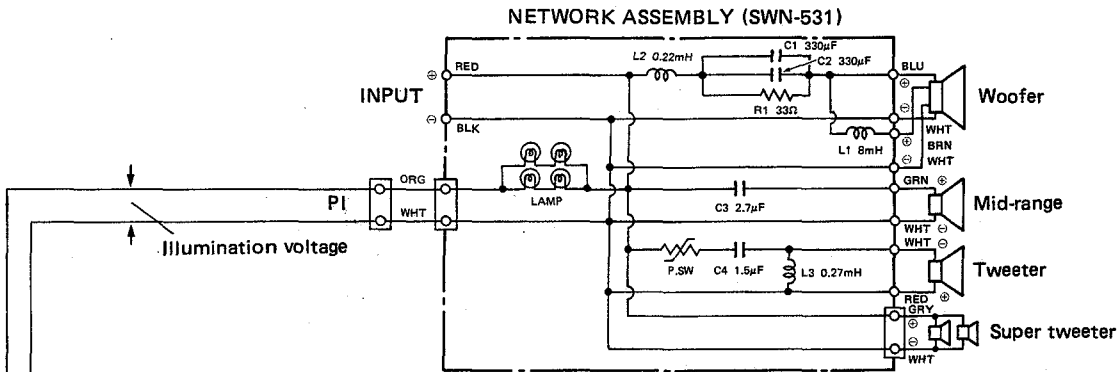
Network Assembly (SWN-530)

Mark	Symbol & Description	Part No.
L1	Choke coil (22 mH)	STH-339
L2	Choke coil (0.39 mH)	STH-431
C1, C2, C3	Capacitor (330 μ F)	CES4SM331KH
C4	Capacitor (3.9 μ F)	CES43R9KJ
C5	Capacitor (1.5 μ F)	CES41R5KJ
R1	Resistor (3.9 Ω , 5W)	RTF5AL3R9JC
	Wedge-base bulb	SEL-011

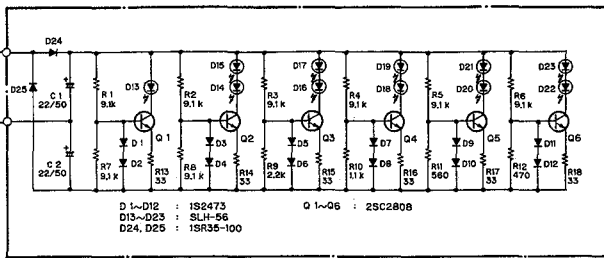
Power Indicator Assembly (SWX-132)

Mark	Symbol & Description	Part No.
★★	Q1-Q6 Transistor	2SC2808
★	D1-D12 Diode	1S2473HS
★	D13-D23 Diode	SLH-56MC
★	D24, D25 Diode	1SR35-100HO
	C1, C2 Capacitor	CEA220M50
	R1-R8	RD1/4PM912J
	R9	RD1/4PM222J
	R10	RD1/4PM112J
	R11	RD1/4PM561J
	R12	RD1/4PM471J
	R13-R18	RD1/4PM330J
★★	Switch (TONE SELECTOR) (NORMAL-SOFT-CLIP)	SSG-019

3.3 CS-607/E, G, US
Circuit Diagram of Network Assembly



Circuit Diagram of Power Indicator Assembly



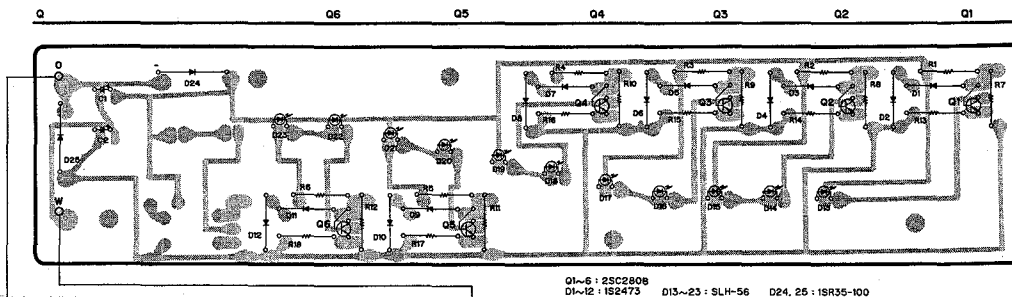
Power Indicator Illumination Voltage

L.E.D. No.	1	2,3	4,5	6,7	8,9	10,11
Illumination voltage	1V	2.3V	2.3V	5.1V	10V	13V

Measurement conditions

- Input is 60Hz sine wave.

P.C.B. Pattern of Power Indicator Assembly



Q1~6 : 2SC2808
D1~12 : IS2473
D13~23 : SLH-56
D24, 25 : ISR35-100

To Network Assembly

Parts List of CS-607/E, G, US

NOTES:

- Parts without part number cannot be supplied.
- The Δ mark found on some component parts indicates the importance of the safety factor of the part. Therefore, when replacing, be sure to use parts of identical designation.
- For your Parts Stock Control, the fast moving items are indicated with the marks **★★** and **★**.
★★ GENERALLY MOVES FASTER THAN ★
 This classification shall be adjusted by each distributor because it depends on model number, temperature, humidity, etc.
- Parts marked by "⊙" are not always kept in stock. Their delivery time may be longer than usual or they may be unavailable.

Network Assembly (SWN-531)

Mark	Symbol & Description	Part No.
L1	Choke coil (8 mH)	STH-372
L2	Choke coil (0.22 mH)	STH-254
L3	Choke coil (0.27 mH)	STH-377
C1, C2	Capacitor (330 μ F)	CES4SM331KH
C3	Capacitor (2.7 μ F)	CES42R7KJ
C4	Capacitor (1.5 μ F)	CES41R5KJ
R1	Resistor (33 Ω , 5W)	RT5B330K
	Wedge-base bulb	SEL-011

Power Indicator Assembly

Mark	Symbol & Description	Part No.
★★	Q1-Q6 Transistor	2SC2808
★	D1-D12 Diode	1S2473HS
★	D13-D23 Diode	SLH-56MC
★	D24, D25 Diode	1SR35-100HO
	C1, C2 Capacitor	CEA220M50
	R1-R8	RD1/4PM912J
	R9	RD1/4PM222J
	R10	RD1/4PM112J
	R11	RD1/4PM561J
	R12	RD1/4PM471J
	R13-R18	RD1/4PM330J

4. PACKING PARTS LIST

Parts List of CS-907/E, G

Mark	Part No.	Description
	SHG-937	Packing case (G type)
	SHG1020	Packing case (E type)
	SHB-188	Top pad A
	SHB-193	Top pad B
	SHB-189	Bottom pad
	SHC-430	Cover
	KDD-012	Speaker cord
	SRB-473	Instruction manual

Parts List of CS-707/E, G, US

Mark	Part No.	Description
	SHG-938	Packing case (G type)
	SHG1021	Packing case (E type)
	SHG1022	Packing case (US type)
	SHB-188	Top pad A
	SHB-193	Top pad B
	SHB-189	Bottom pad
	SHC-430	Cover
	KDD-012	Speaker cord
	SRB-474	Instruction manual

Parts List of CS-607/E, G, US

Mark	Part No.	Description
	SHG-936	Packing case (G type)
	SHG1018	Packing case (E type)
	SHG1019	Packing case (US type)
	SHB-190	Top pad A
	SHB-192	Bottom pad B
	SHB-191	Bottom pad
	SHC-426	Protection mat
	KDD-012	Speaker cord
	SRB-475	Instruction manual

5. SPECIFICATIONS

CS-907/E, G

Enclosure..... Book-shelf style, Bass-reflex type
 System..... 4-way, 7-speaker system
 Speakers:
 Woofer..... 40 cm (16 in) cone type × 1
 Mid-range..... 16 cm (6-5/16 in) cone type × 1
 Tweeter..... Horn type × 1
 Super Tweeter.... 1-10/16 inch piezoelectric cone type × 4
 Accessory..... Power Indicator
 LED — green × 13
 Tone selector
 NORMAL—SOFT—CRISP
 Impedance..... 8 ohms
 Frequency Range 30 Hz to 25,000 Hz
 Sensitivity..... 99 dB/W (at 1-meter distance)
 Maximum Power..... 400 W
 Rated Power..... 100 W
 Crossover Frequency 2,000 Hz, 4,000 Hz, 11,000 Hz
 Weight..... 21 kg/46.3 lbs
 External Dimensions 450(W) × 725(H) × 269(D) mm
 17-11/16 (W) × 28-9/16 (H) × 10-9/16 (D) in
 Accessory Parts Operating Guide × 1
 Speaker Cord × 1

NOTE:
 Specifications and design subject to possible modification
 without notice, due to improvements.

CS-707/E, G, US

Enclosure..... Book-shelf style, Bass-reflex type
 System..... 4-way, 5-speaker system
 Speakers:
 Woofer..... 40 cm (16 in) cone type × 1
 Mid-range..... 12 cm (4-3/4 in) cone type × 1
 Tweeter..... Horn type × 1
 Super Tweeter.... 1-10/16 inch piezoelectric cone type × 2
 Accessory..... Power Indicator
 LED — green × 11
 Tone Selector
 NORMAL — SOFT — CRISP
 Impedance..... 8 ohms
 Frequency Range 30 Hz to 25,000 Hz
 Sensitivity..... 98 dB/W (at 1-meter distance)
 Maximum Power..... 300 W
 Rated Power..... 70 W
 Crossover Frequency 1,500 Hz, 4,000 Hz, 11,000 Hz
 External Dimensions 450(W) × 725(H) × 269(D) mm
 17-11/16 (W) × 28-9/16 (H) × 10-9/16 (D) in
 Weight..... 20 kg/44.1 lb
 Accessory Parts Operating Guide × 1
 Speaker Cord × 1

NOTE:
 Specifications and design subject to possible modification
 without notice, due to improvements.

CS-607/E, G, US

Enclosure..... Book-shelf style, Bass-reflex type
 System..... 4-way, 5-speaker system
 Speakers:
 Woofer..... 30 cm (12 in) cone type × 1
 Mid-range..... 12 cm (4-3/4 in) cone type × 1
 Tweeter..... Horn type × 1
 Super Tweeter.... 1-10/16 inch piezoelectric cone type × 2
 Accessory..... Power Indicator
 LED — green × 11
 Impedance..... 8 ohms
 Frequency Range 35 Hz to 25,000 Hz
 Sensitivity..... 96 dB/W (at 1-meter distance)
 Maximum Power..... 210 W
 Rated Power..... 50 W
 Crossover Frequency 2,000 Hz, 5,000 Hz, 11,000 Hz
 Weight..... 19.0 kg/41.9 lb
 External Dimensions 410(W) × 646(H) × 285(D) mm
 16-1/8 (W) × 25-7/16 (H) × 11-1/4 (D) in
 Accessory Parts Operating Guide × 1
 Speaker Cord × 1

NOTE:
 Specifications and design subject to possible modification
 without notice, due to improvements.