



# HITACHI

## SERVICE MANUAL

TY

No. No.649E

### TRK-W360

[ E,E(BS),W,W(UN),W(AU),H,HC ]

### CONTENTS

SPECIFICATONS .....	1
DISASSEMBLY INSTRUCTIONS .....	2
DIAL POINTER SETTING .....	3
CIRCUIT ADJUSTMENT .....	4
ADJUSTMENT POINT .....	5
TUNER ALIGNMENT SET UP .....	6
TUNER ALIGNMENT .....	8
PRINTED WIRING BOARD .....	14
CIRCUIT DIAGRAM .....	20
WIRING DIAGRAM .....	25
EXPLODED VIEW (MECHANISM ASSEMBLY) .....	26
(UNIT ASSEMBLY) .....	27
REPLACEMENT PARTS LIST .....	28

### SAFETY PRECAUTIONS

The following precautions should be observed when servicing.

1. Since many parts in the unit have special safety related characteristics, always use genuine Hitachi's replacement parts. Especially critical parts in the power circuit block should not be replaced with other makers. Critical parts are marked with  $\Delta$  in the circuit diagram and printed wiring board.
2. Before returning a repaired unit to the customer, the service technician must thoroughly test the unit to ascertain that it is completely safe to operate without danger of electrical shock.

### SPECIFICATIONS

#### • GENERAL SPECIFICATIONS

<b>Power Supply</b>	: AC: 220V, 50Hz [for E] : AC: 240V, 50Hz [for E(BS)] : AC: 110-127V, 200-220V; 230-250V, 60/60Hz [for W, W(UN), W(AU)] : AC: 120V, 60Hz [for H, HC] : DC: 9V ("D" cell or IEC R20 or SUM-1X6 or equivalent) (option)
<b>Power (mains) Consumption</b>	: 8W
<b>Speakers</b>	: 10cm, 4 ohms X2
<b>Output power</b>	: 20W P.M.P. (AC operation) 1.8W/CH (10% T.H.D.) (DC operation)
<b>Dimensions</b>	: 515(W) X 163(H) X 130(D) mm
<b>Weight</b>	: 3.4kg (with batteries)

#### • RADIO SECTION

<b>Circuit System</b>	: FM/SW/MW/LW 4-band superheterodyne [for E, E(BS)] : FM/SW2/SW1/MW 4-band superheterodyne [for W, W(UN), W(AU)] : FM/AM 2-band superheterodyne [for H, HC]
-----------------------	--

#### Tuning Range

: FM: 87.5 to 108 MHz [for E, E(BS)]
: FM: 88 to 108 MHz [except E, E(BS)]
: SW: 6.0 to 18.0 MHz [for E, E(BS)]
: MW: 530 to 1605 KHz [except H, HC]
: AM: 530 to 1705 KHz [for H, HC]
: LW: 150 to 285 KHz [for E, E(BS)]
: SW2: 7.0 to 22.0 MHz
: SW1: 2.3 to 7.0 MHz

#### Antennas (Aerial)

: SW2/FM/SW: Telescopic antenna (aerial)
: SW1/MW/AMLW: Built-in ferrite core antenna (aerial)

#### • TAPE RECORDER SECTION

<b>Recording System</b>	: AC bias (TAPE 2)
<b>Erasing System</b>	: Magnet (TAPE 2)
<b>Playback Frequency Response</b>	: NORMAL: 70 to 10,000 Hz
<b>Output Load Impedance</b>	: Headphones: 8 to 100 ohms

\* Specifications are subject to change without notice for performance improvement.

SPECIFICATIONS AND PARTS ARE SUBJECT TO CHANGE FOR IMPROVEMENT.

## RADIO CASSETTE TAPE RECORDER

October 1990

YOKOHAMA WORKS

# DISASSEMBLY INSTRUCTIONS

1. Remove the battery cover and the batteries.
2. Remove seven screws (A) holding the rear cabinet.
3. Remove four screws (B) holding the power supply PCB.
4. Remove one screw (C) holding the tuner PCB.
5. Remove the volume Control knob and take out the amplifier PCB.
6. Remove three screws (D) holding the cassette mechanism.
7. Remove three EQ control knobs and take out EQ Control PCB.

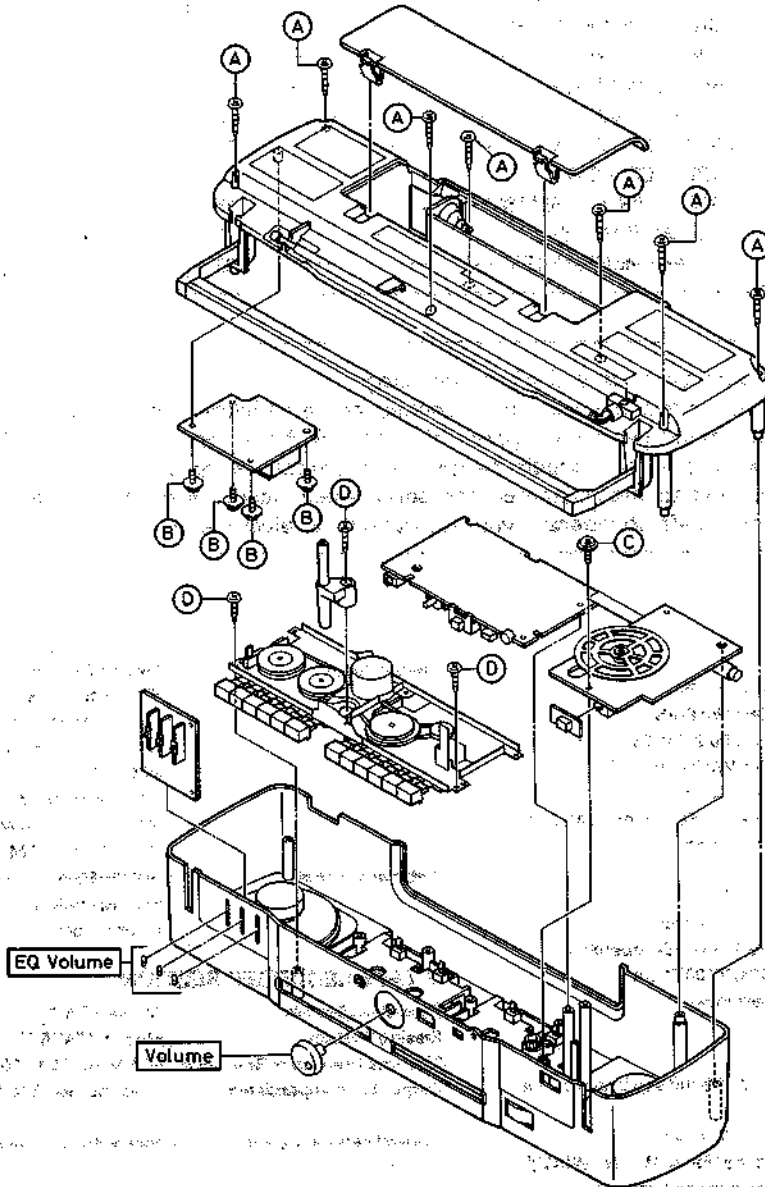


Figure 1

## DIAL POINTER SETTING

1. Remove the tuner PCB.
2. Turn the tuning knob clockwise.
3. Slide the pointer to the check position.
4. Turn the tuning gear counterclockwise.
5. Replace the tuner PCB.

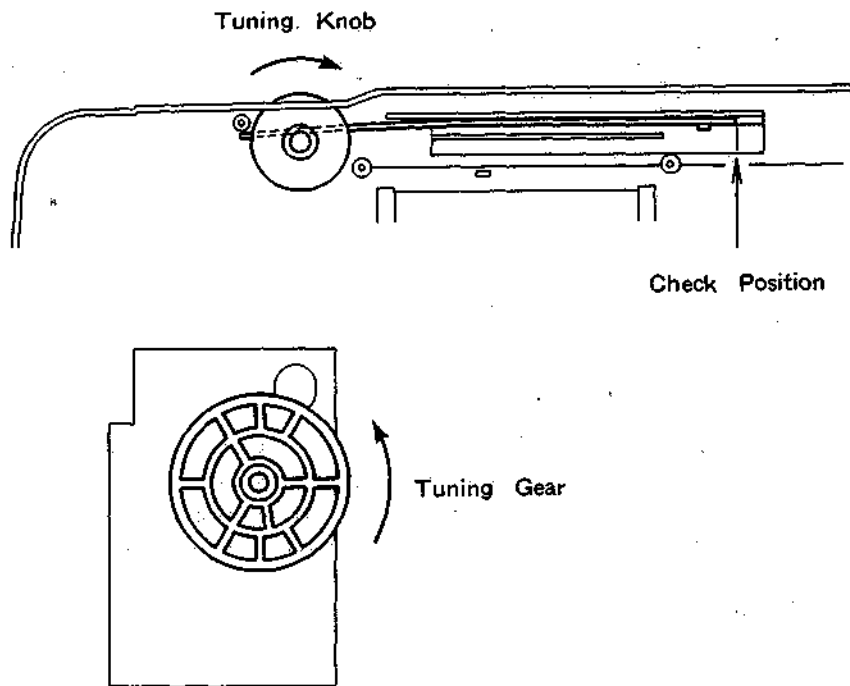


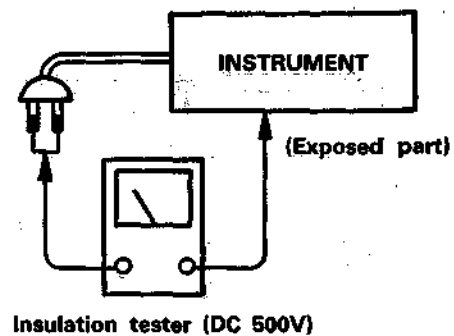
Figure 2

Check that exposed parts are acceptably insulated from the supply circuit before returning the instrument repaired to the customer.

● **Checking method**

Operate switch is set to ON.

Next, measure the resistance value between the both poles of attachment cup (Power supply plug) and the exposed parts (Parts such as Knob, Cover, etc. where the customer is easy to touch.) and check that the resistance value is 500 kohms or more.



## CIRCUIT ADJUSTMENT

### Tape Speed Adjustment (Figure 3)

1. Connect a frequency counter to the headphones jack parallel with a 32 ohm non-reactive dummy load.
2. Adjust the motor speed with VR300 until the counter displays 3015 Hz ( 2940 to 3090 Hz) with playing back test tape ( 3000 Hz) .

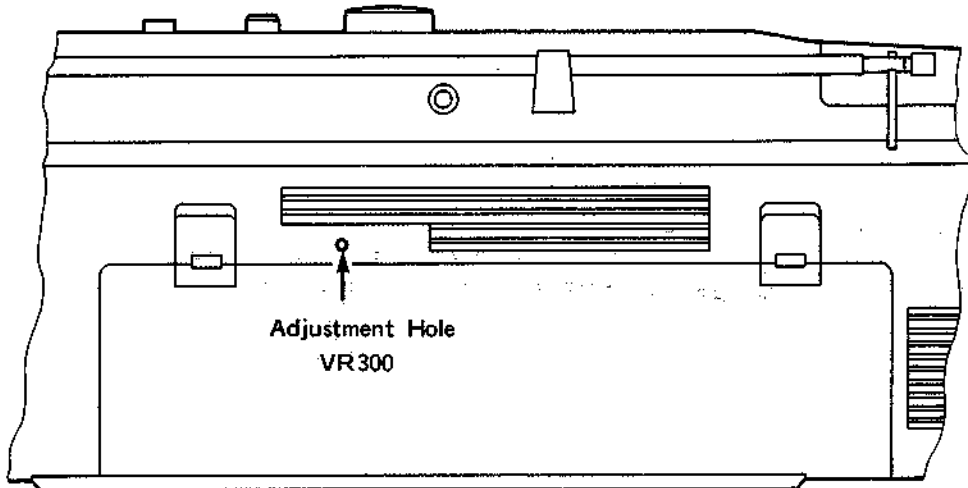


Figure 3

### Playback Head Azimuth Adjustment (Cassette 1) (Figure 4)

1. Connect an SSVM or oscilloscope to each of the headphones jack (dummy load 32 ohm) .
2. Playback an 8 kHz test tape and turn the azimuth adjustment screw to obtain the maximum output level of the left and right channels, in the forward and reverse play modes.
3. When the output level of the left and right channels, and forward and reverse positions differs, readjust to make the both channels, and both directions at the same level.
4. After adjustment, secure the screw with paint or glue.

### Record/Playback Head Azimuth Adjustment (Cassette 2) (Figure 4)

1. Connect an SSVM or oscilloscope to each of the headphone jack (dummy load 32 ohm) .
2. Playback an 8 kHz test tape and turn the azimuth adjustment screw to obtain the maximum output of the left and right channels.
3. When the output level of the left and right channels differs, readjust to make the both channels at the same level.
4. After adjustment, secure the screw with paint or glue.

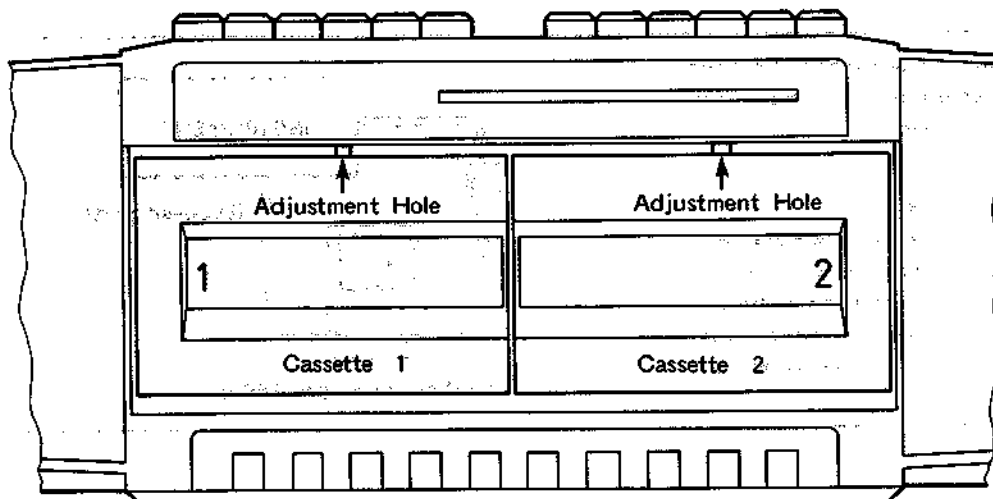


Figure 4

**ADJUSTMENT POINT**

[for E, E (BS), W, W (UN), W (AU) ]

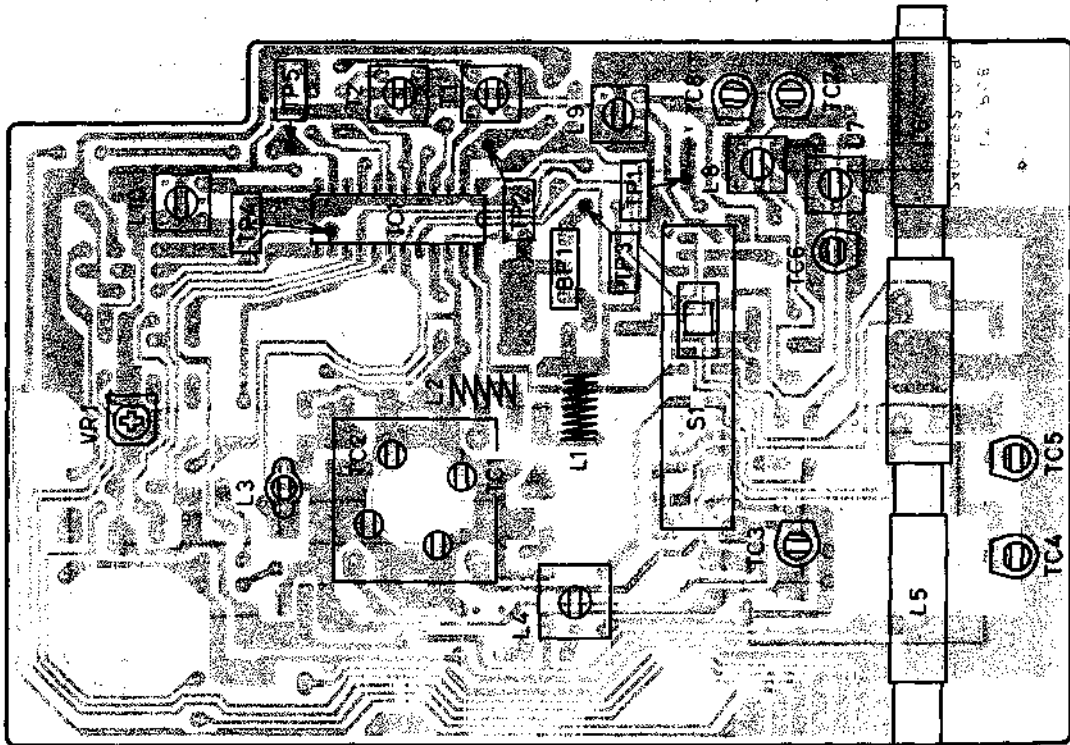


Figure 5

[for H, HC]

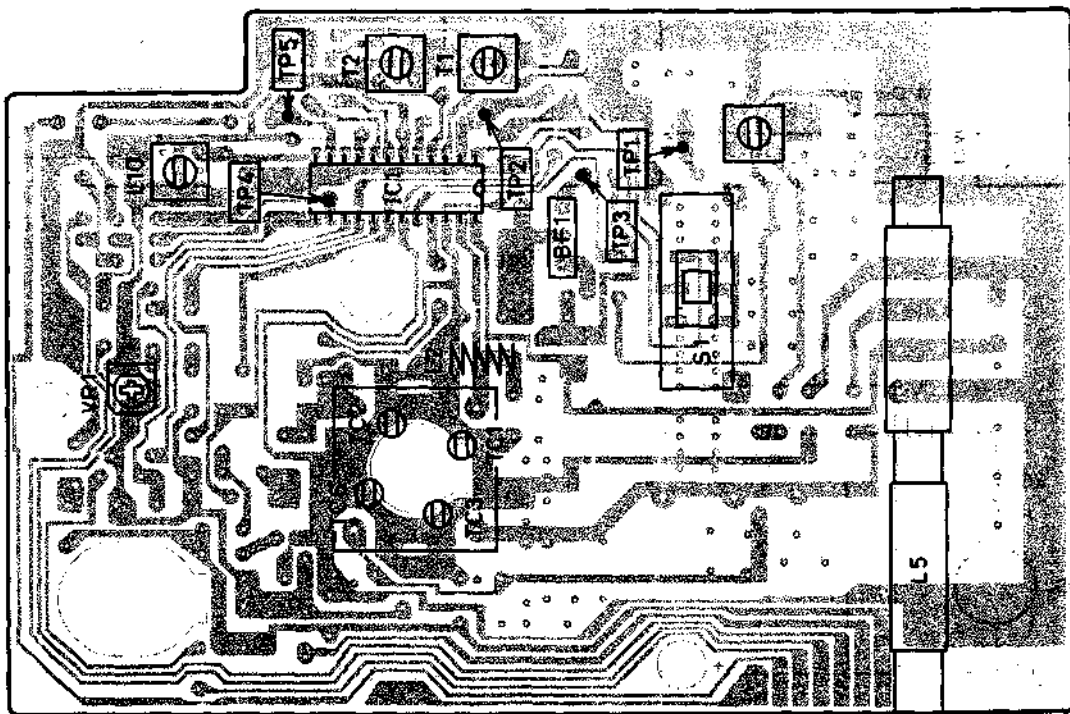


Figure 6

## TUNER ALIGNMENT SET UP

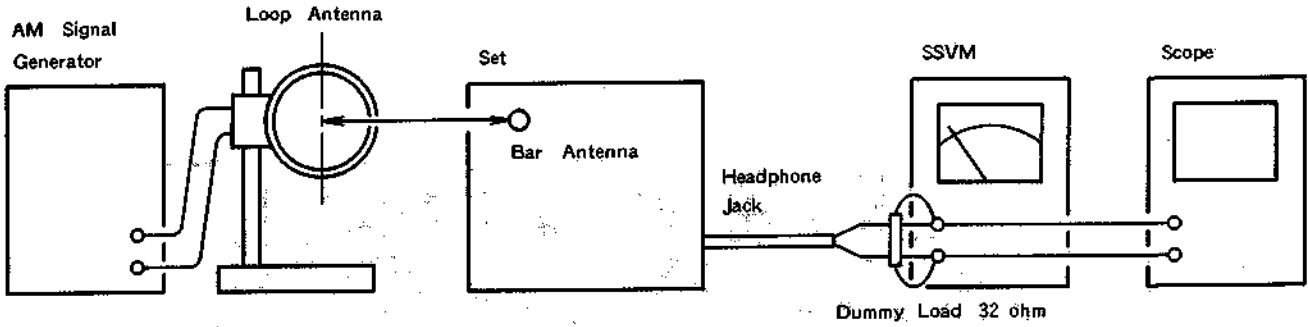


Figure 7

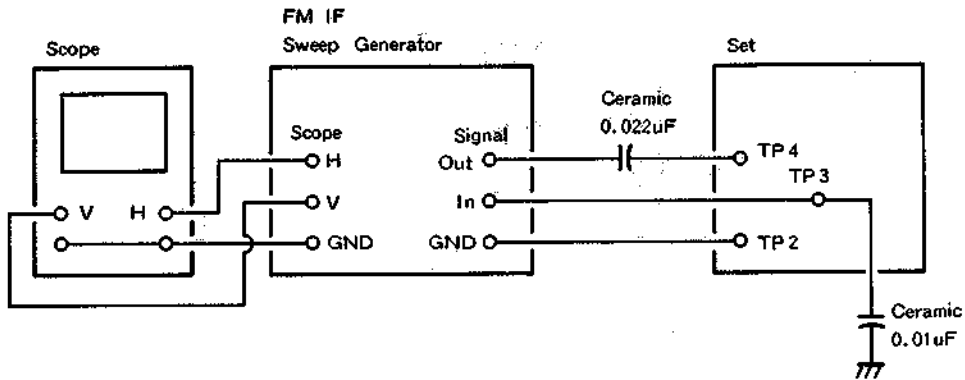


Figure 8

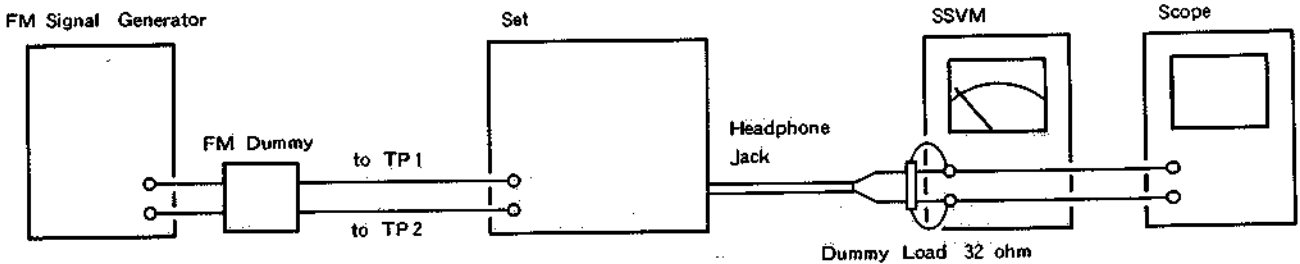
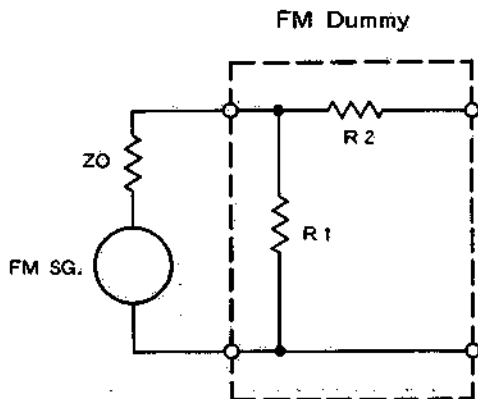


Figure 9



$R_1 = Z_0$   $Z_0 =$  Output impedance of FM SG.  
 $R_2 = 75 \text{ ohm} - Z_0 / 2$

Figure 10

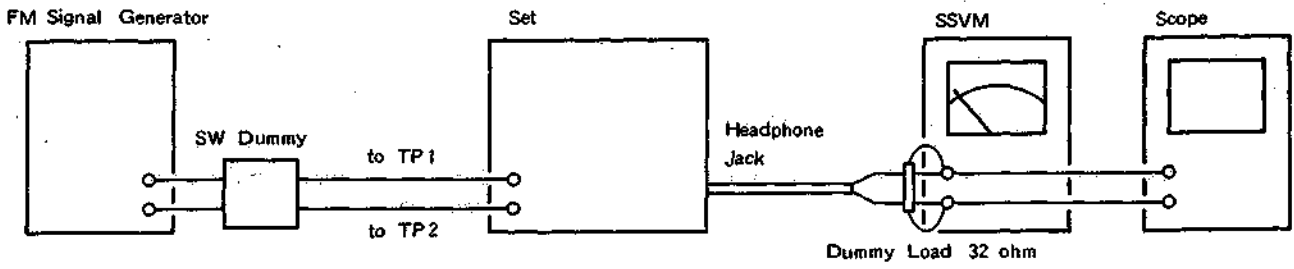


Figure 11

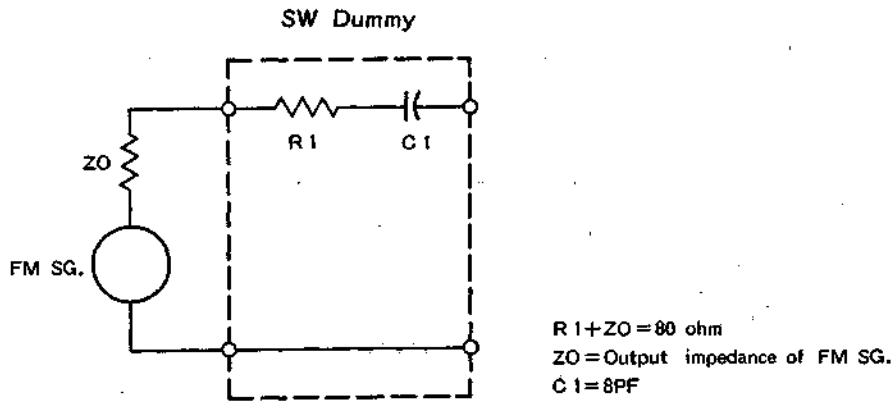


Figure 12

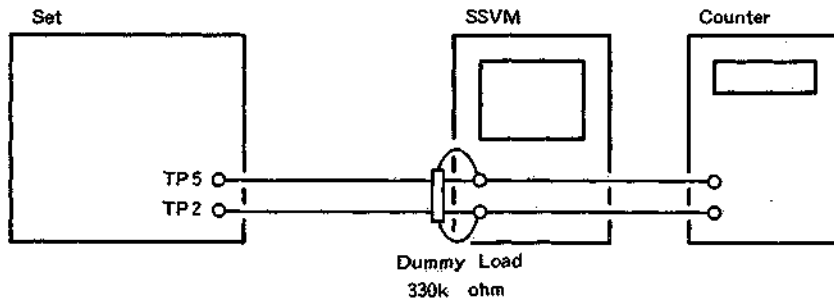
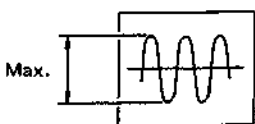


Figure 13

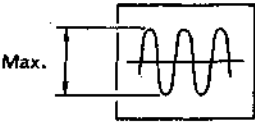
## TUNER ALIGNMENT

[for H, HC]

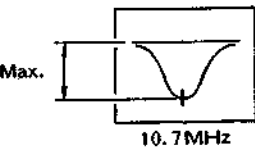
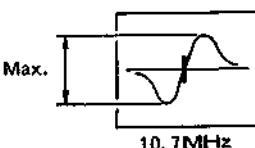
### AM IF Alignment (Figures 6 and 7)

Step	Alignment	Frequency of Signal Generator	Tuning Dial Setting	Adjustment	Remarks
1	IF Calibration	455 kHz	Low end	T 2	Obtain sine-wave and maximum amplitude.  <div style="text-align: right;">  </div>

### MW RF Alignment (Figures 6 and 7)

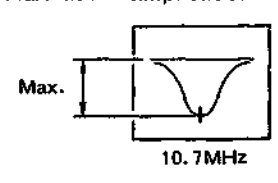
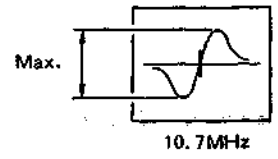
Step	Alignment	Frequency of Signal Generator	Tuning Dial Setting	Adjustment	Remarks
1	Tuning Range Calibration	515 kHz	Low End	L 8	Obtain sine-wave and maximum amplitude.  <div style="text-align: right;">  </div>
2		1750 kHz	High End	TC6	
3	Adjustment of Tracking	600 kHz	600 kHz	L 5	
4		1400 kHz	1400 kHz	TC3	
5	Repeat the above adjustments.				

### FM IF Alignment (Figures 6 and 8)

Step	Alignment	Frequency of Signal Generator	Tuning Dial Setting	Adjustment	Remarks
1	IF Calibration	10.7 MHz	Low end	Turn L 10 fully counter clockwise.	
2				T 1	Obtain symmetrical curve and maximum amplitude.  <div style="text-align: right;">  </div>
3				L 10	Obtain S curve and maximum amplitude.  <div style="text-align: right;">  </div>



FM IF Alignment (Figures 5 and 8)

Step	Alignment	Frequency of Signal Generator	Tuning Dial Setting	Adjustment	Remarks	
1	IF Calibration	10.7 MHz	Low end	Turn L 10 fully counter clockwise.		
2				T 1	Obtain symmetrical curve and maximum amplitude.	
3				L 10	Obtain S curve and maximum amplitude.	

FM RF Alignment (Figures 5, 9 and 10)

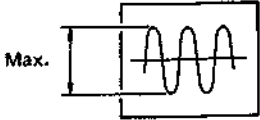
Step	Alignment	Frequency of Signal Generator	Tuning Dial Setting	Adjustment	Remarks
1	Tuning Range Calibration	87.35 MHz	Low End	L 3	Obtain sine-wave and maximum amplitude.
2		108.25 MHz	High End	TC2	
3	Adjustment of Tracking	90 MHz	90 MHz	L 2	
4		106 MHz	106 MHz	TC1	
5	Repeat the above adjustments.				

SW RF Alignment (Figures 5, 11 and 12)

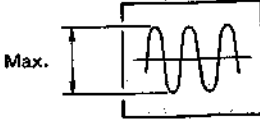
Step	Alignment	Frequency of Signal Generator	Tuning Dial Setting	Adjustment	Remarks
1	Tuning Range Calibration	5.8 MHz	Low End	L 7	Obtain sine-wave and maximum amplitude.
2		18.5 MHz	High End	TC6	
3	Adjustment of Tracking	7 MHz	7 MHz	L 4	
4		16 MHz	16 MHz	TC3	
5	Repeat the above adjustments.				

[for W, W (UN), W (AU) ]

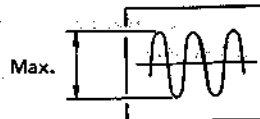
**AM IF Alignment (Figures 5 and 7)**

Step	Alignment	Frequency of Signal Generator	Tuning Dial Setting	Adjustment	Remarks
1	IF Calibration	455 kHz	Low end	T 2	Obtain sine-wave and maximum amplitude.  

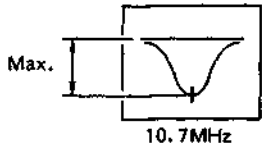
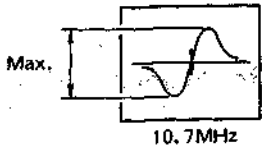
**MW RF Alignment (Figures 5 and 7)**

Step	Alignment	Frequency of Signal Generator	Tuning Dial Setting	Adjustment	Remarks
1	Tuning Range Calibration	515 kHz	Low End	L 9	Obtain sine-wave and maximum amplitude.  
2		1635 kHz	High End	TC8	
3	Adjustment of Tracking	600 kHz	600 kHz	L 6	
4		1400 kHz	1400 kHz	TC5	
5	Repeat the above adjustments.				

**SW1 RF Alignment (Figures 5 and 7)**

Step	Alignment	Frequency of Signal Generator	Tuning Dial Setting	Adjustment	Remarks
1	Tuning Range Calibration	22.5 MHz	Low End	L 8	Obtain sine-wave and maximum amplitude.  
2		7.2 MHz	High End	TC7	
3	Adjustment of Tracking	2.8 MHz	2.6 MHz	L 5	
4		4.8 MHz	4.8 MHz	TC4	
5	Repeat the above adjustments.				

FM IF Alignment (Figures 5 and 8)

Step	Alignment	Frequency of Signal Generator	Tuning Dial Setting	Adjustment	Remarks	
1	IF Calibration	10.7 MHz	Low end	Turn L 10 fully counter clockwise.		
2				T 1	Obtain symmetrical curve and maximum amplitude.	
3				L 10	Obtain S curve and maximum amplitude.	

FM RF Alignment (Figures 5, 9 and 10)

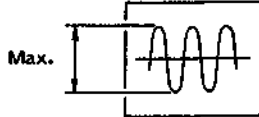
Step	Alignment	Frequency of Signal Generator	Tuning Dial Setting	Adjustment	Remarks
1	Tuning Range Calibration	87.35 MHz	Low End	L 3	Obtain sine-wave and maximum amplitude.
2		108.25 MHz	High End	TC2	
3	Adjustment of Tracking	90 MHz	90 MHz	L 2	
4		106 MHz	106 MHz	TC1	
5	Repeat the above adjustments.				

SW2 RF Alignment (Figures 5, 11 and 12)

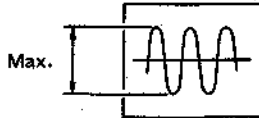
Step	Alignment	Frequency of Signal Generator	Tuning Dial Setting	Adjustment	Remarks
1	Tuning Range Calibration	6.85 MHz	Low End	L 7	Obtain sine-wave and maximum amplitude.
2		22.5 MHz	High End	TC6	
3	Adjustment of Tracking	9 MHz	9 MHz	L 4	
4		20 MHz	20 MHz	TC3	
5	Repeat the above adjustments.				

[for: E, E (BS) ]

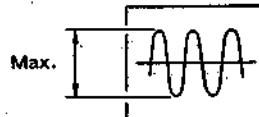
**AM IF Alignment (Figures 5 and 7)**

Step	Alignment	Frequency of Signal Generator	Tuning Dial Setting	Adjustment	Remarks
1	IF Calibration	465 kHz	Low end	T 2	Obtain sine-wave and maximum amplitude.  

**MW RF Alignment (Figures 5 and 7)**

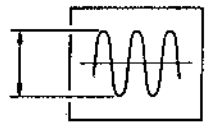
Step	Alignment	Frequency of Signal Generator	Tuning Dial Setting	Adjustment	Remarks
1	Tuning Range Calibration	515 kHz	Low End	L 8	Obtain sine-wave and maximum amplitude.  
2		1635 kHz	High End	TC7	
3	Adjustment of Tracking	600 kHz	600 kHz	L 5	
4		1400 kHz	1400 kHz	TC4	
5	Repeat the above adjustments.				

**LW RF Alignment (Figures 5 and 7)**

Step	Alignment	Frequency of Signal Generator	Tuning Dial Setting	Adjustment	Remarks
1	Tuning Range Calibration	145 kHz	Low End	L 9	Obtain sine-wave and maximum amplitude.  
2		290 kHz	High End	TC8	
3	Adjustment of Tracking	150 kHz	150 kHz	L 6	
4		280 kHz	280 kHz	TC5	
5	Repeat the above adjustments.				

**PRINTED WIRING BOARD**

**FM RF Alignment (Figures 5, 9 and 10)**

Step	Alignment	Frequency of Signal Generator	Tuning Dial Setting	Adjustment	Remarks
1	Tuning Range Calibration	87.35 MHz	Low End	L 3	Obtain sine-wave and maximum amplitude.  Max. 
2		108.25 MHz	High End	TC2	
3	Adjustment of Tracking	90 MHz	90 MHz	L 2	
4		106 MHz	106 MHz	TC1	
5	Repeat the above adjustments.				

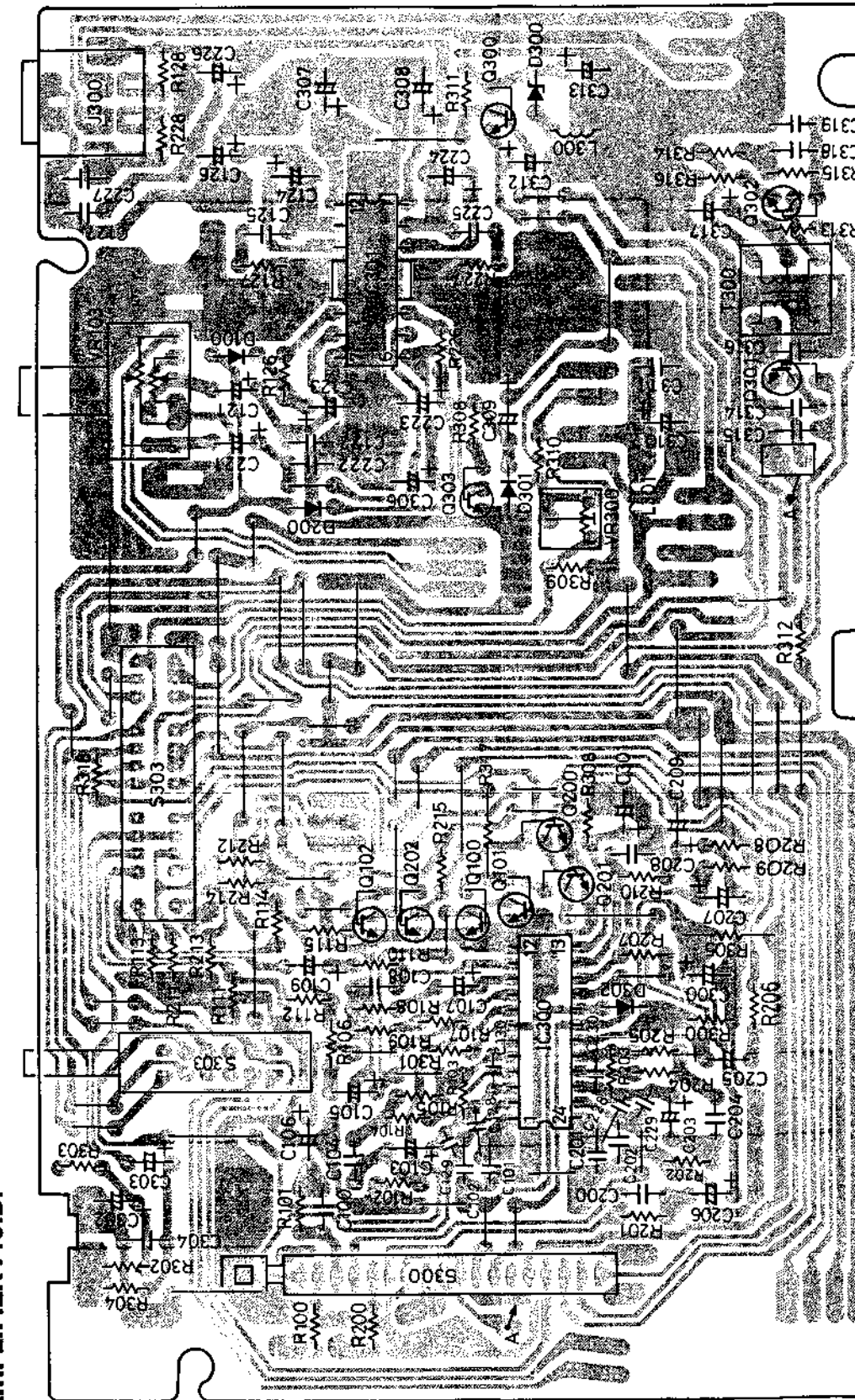
**FM Stereo Adjustment (Figures 5, 6 and 13)**

Function Switch : RADIO position  
 Radio Switch : FM STEREO position

Adjust VR1 on the Tuner PCB for a frequency counter read 76 kHz.

**Remarks:**

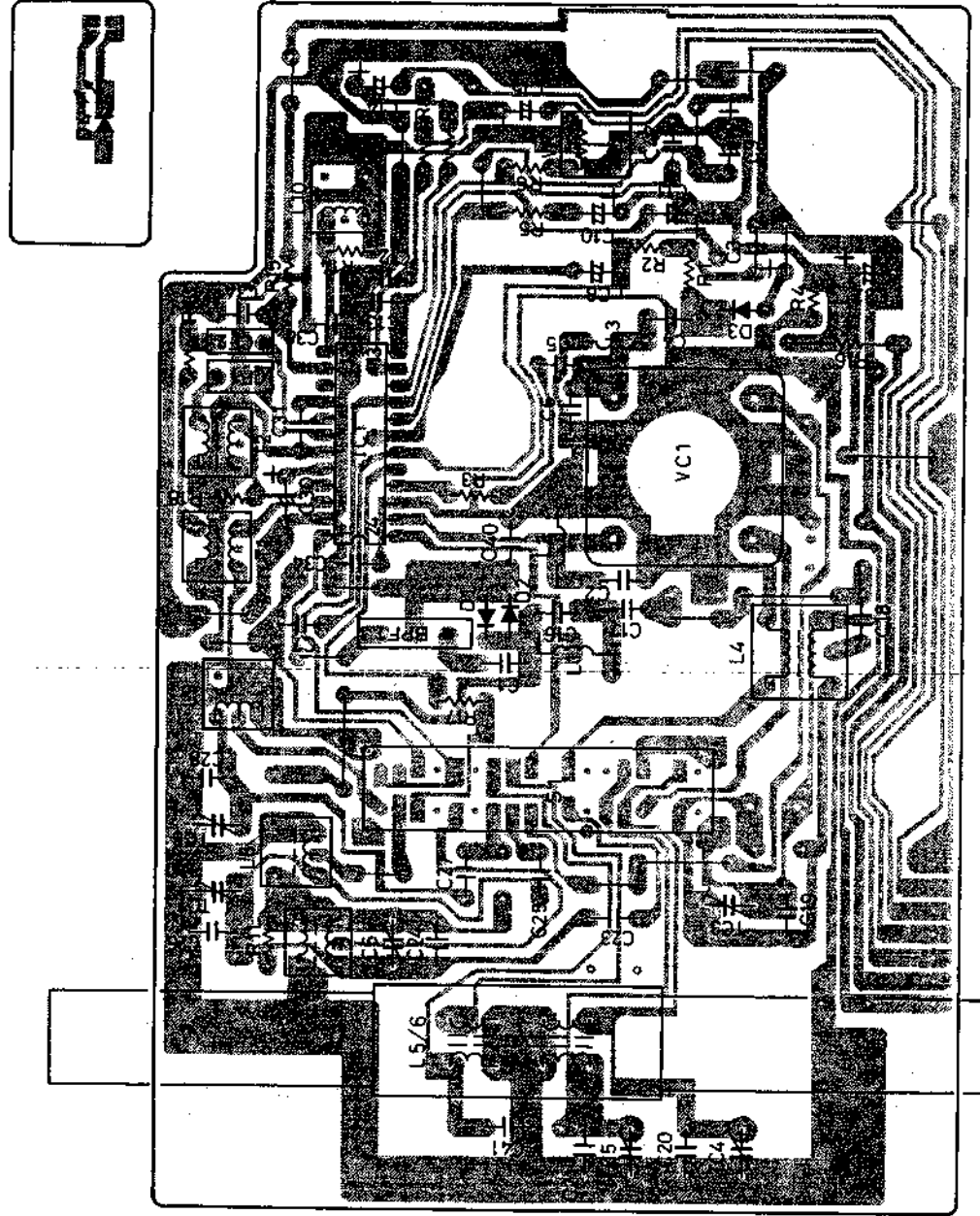
- 1) When aligning FM IF, the symmetrical curve may not be obtained by setting the marker of the sweep generator (10.7MHz). This is due to the ceramic filter used in the unit. Regardless of the marker, align the curve as symmetrically as possible with peak output.
- 2) When aligning the range and adjusting the tracking, proceed with alignment in a sequence of FM→SW→MW→LW [for E, E (BS) ], FM→SW2→SW1→MW [for W, W (UN) , W (AU) ], FM→MW [for H, HC] .
- 3) Use a screwdriver with a plastic grip for all alignments.



**AMPLIFIER P.C.B.**

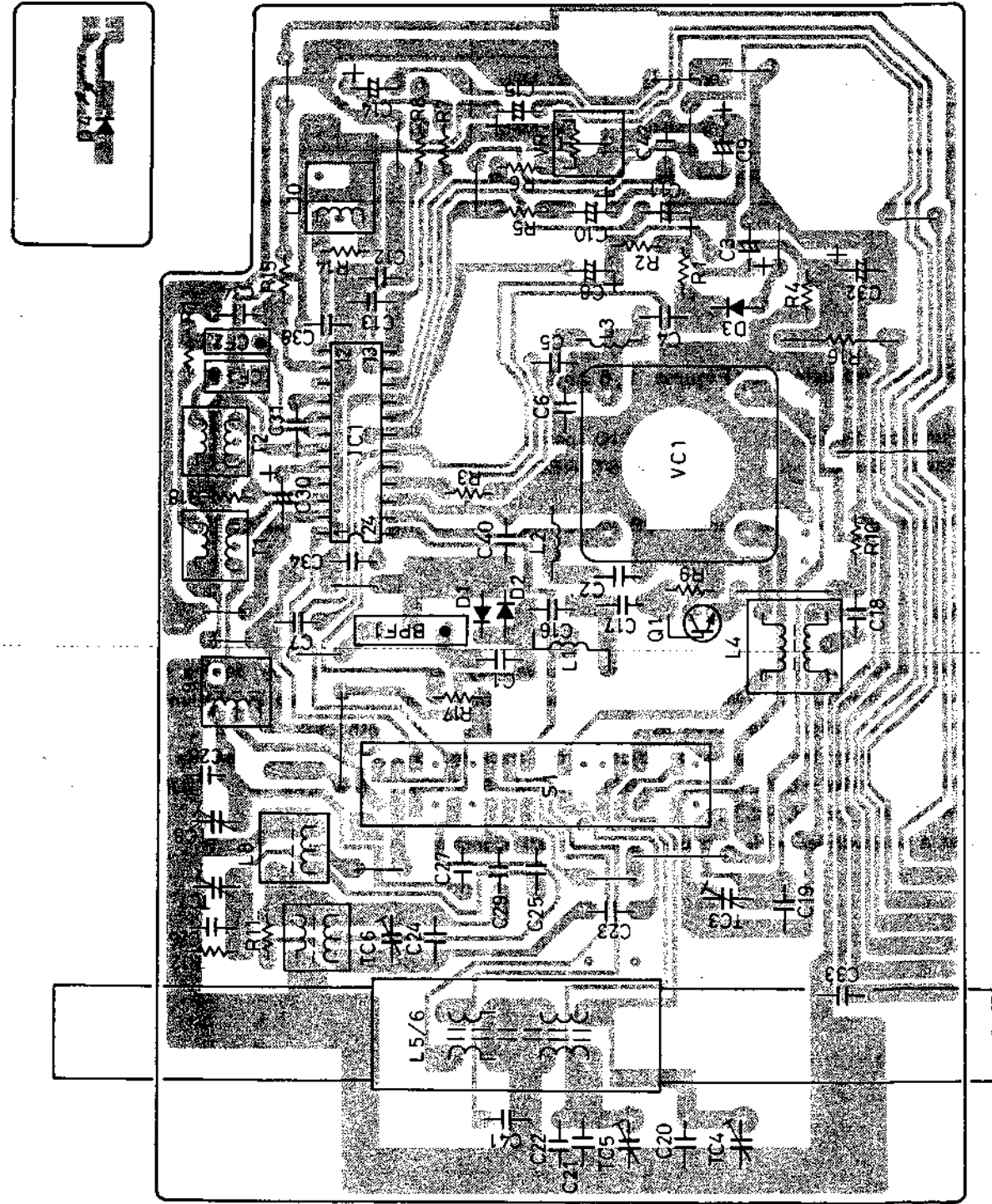
PRINTED WIRING BOARD

TUNER P.C.B. [for E, E(BS)]



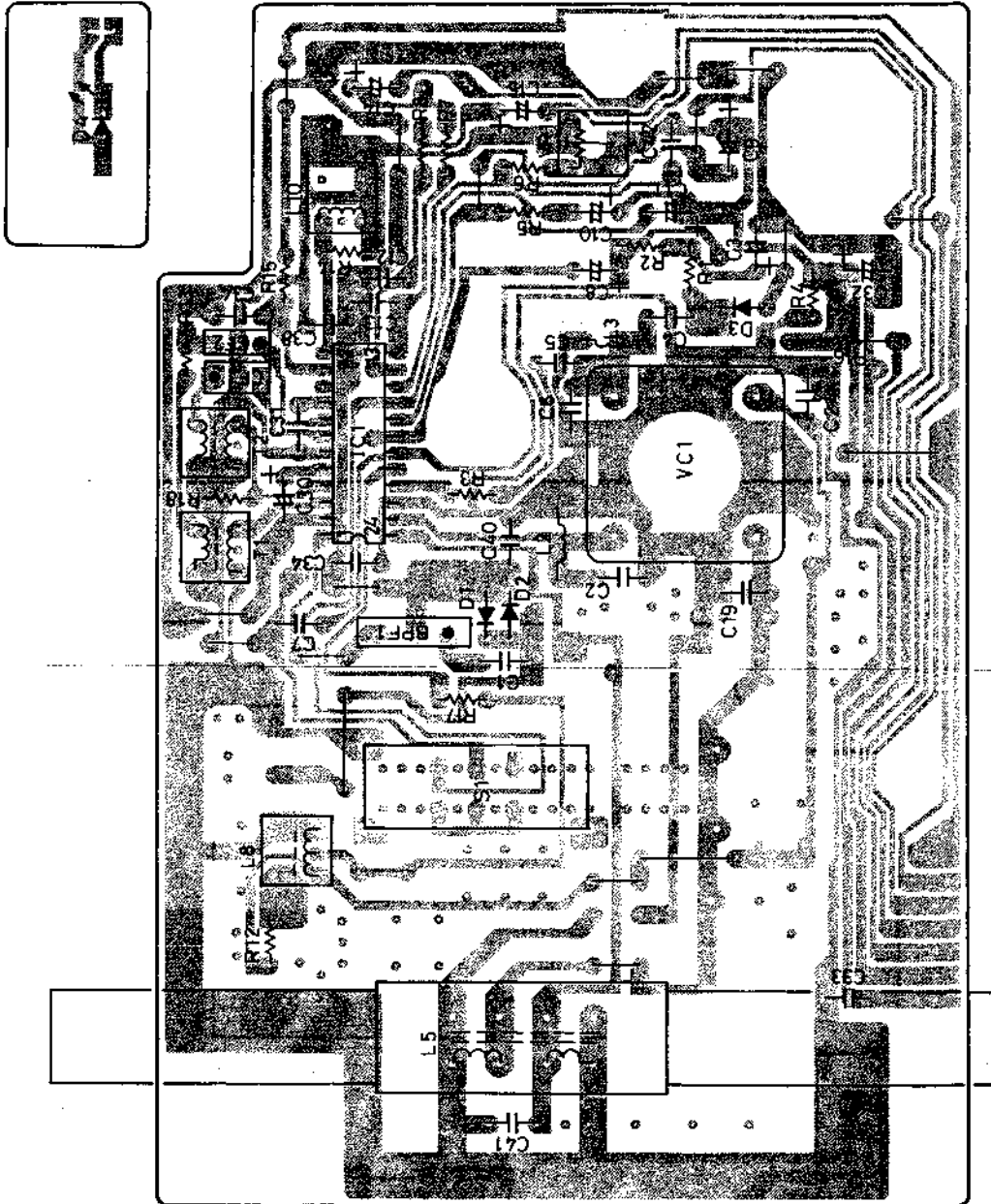
PRINTED WIRING BOARD

TUNER P.C.B. [for W, W(UN), W(AU)]



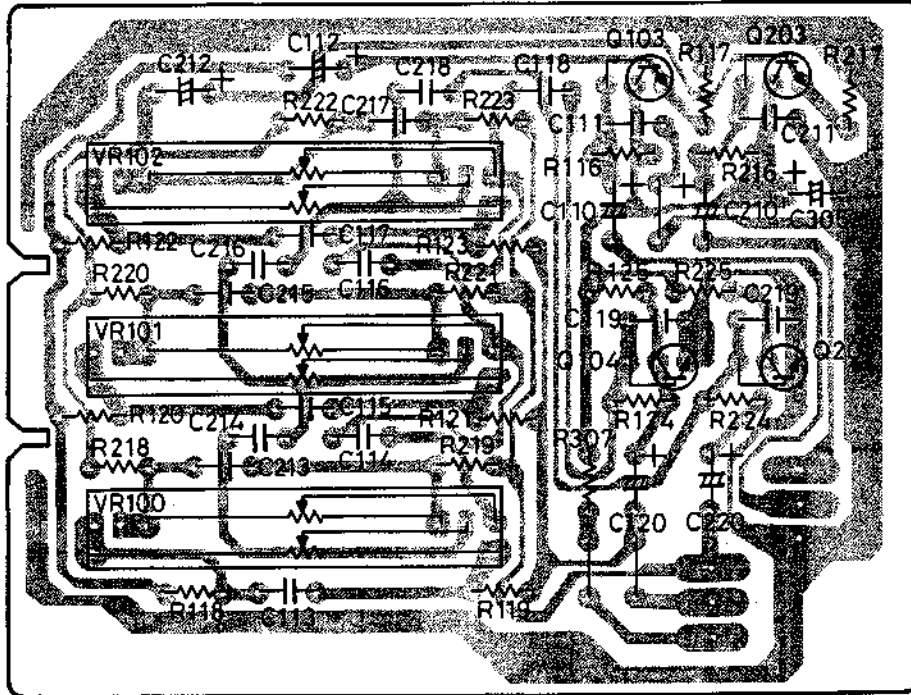
# PRINTED WIRING BOARD

TUNER P.C.B. [for H,HC]

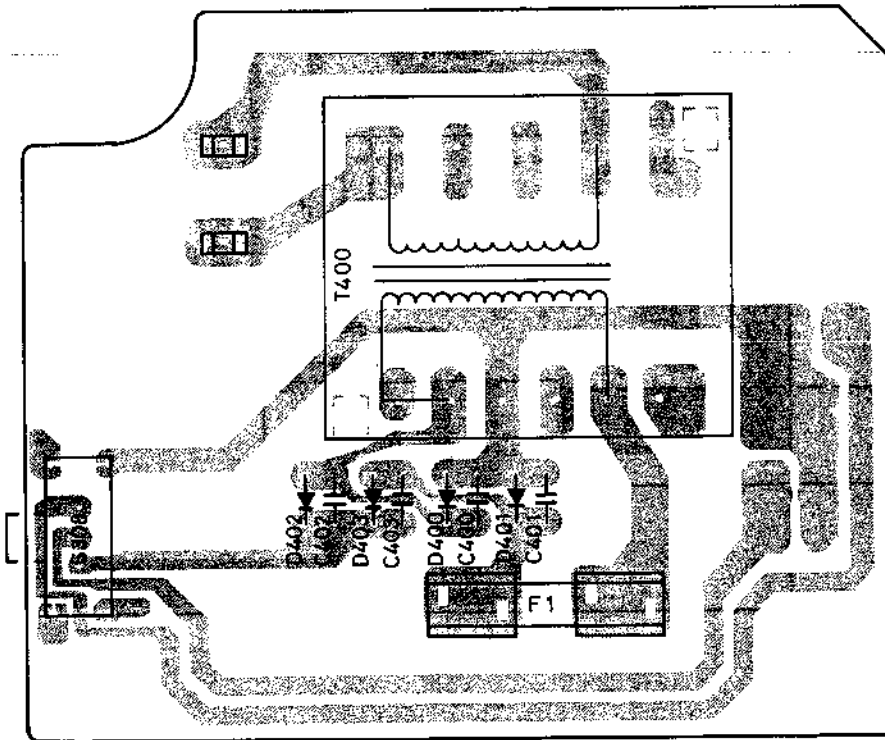


# PRINTED WIRING BOARD

EQ P.C.B.



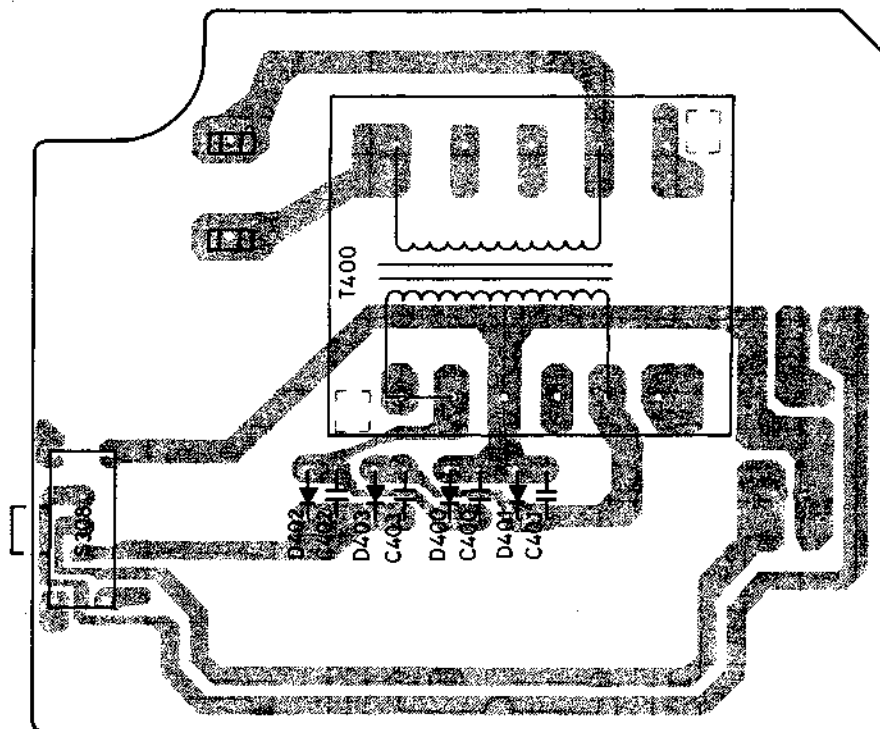
PS P.C.B. [for E,E(BS)]



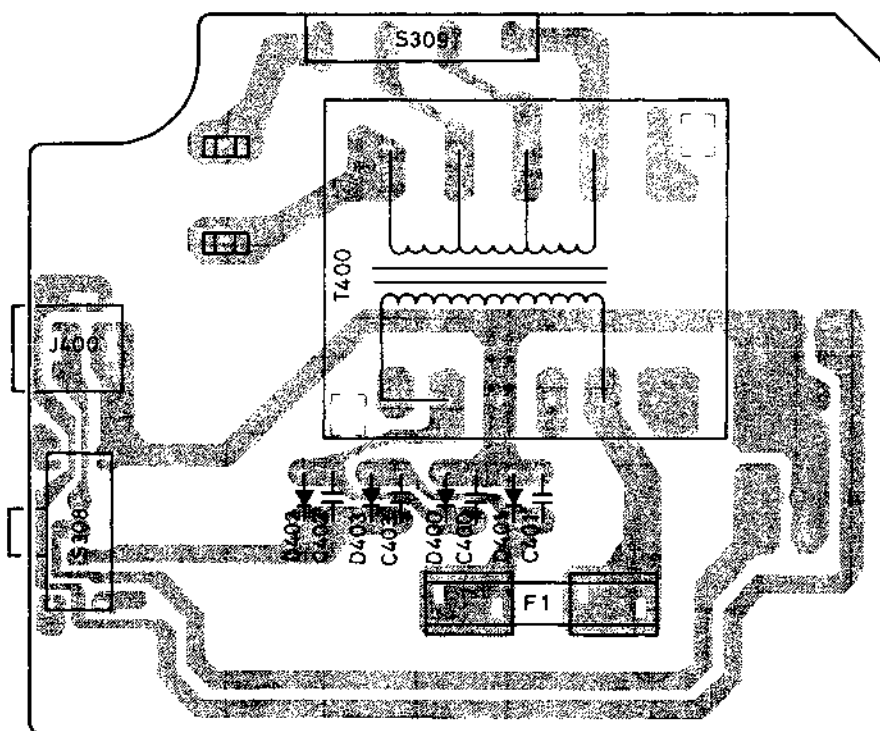


**PRINTED WIRING BOARD**

**PS P.C.B. [for H,HC]**

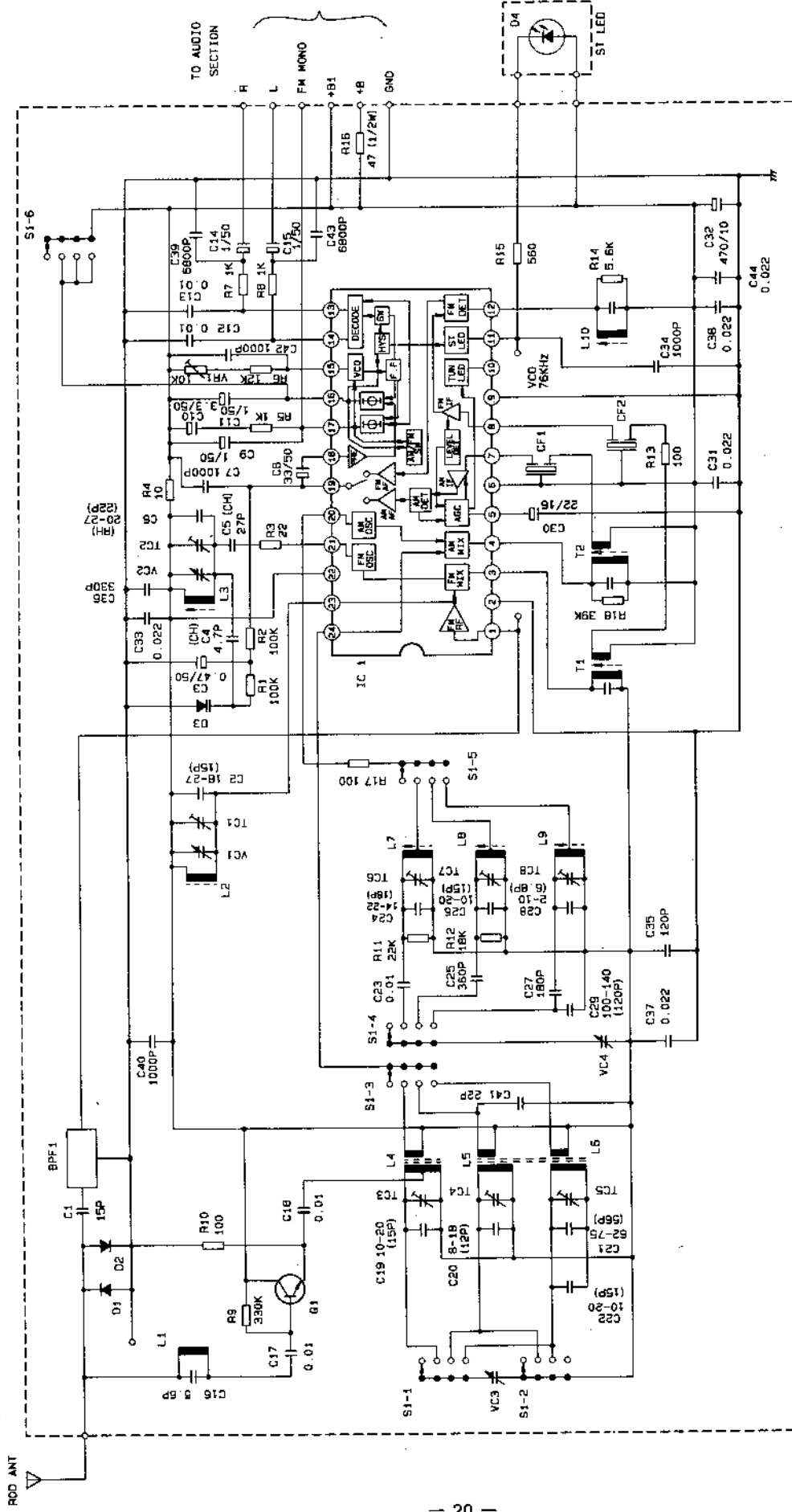


**PS P.C.B. [for W,W(UN),W(AU)]**



# CIRCUIT DIAGRAM

[for E.E.(BS)]

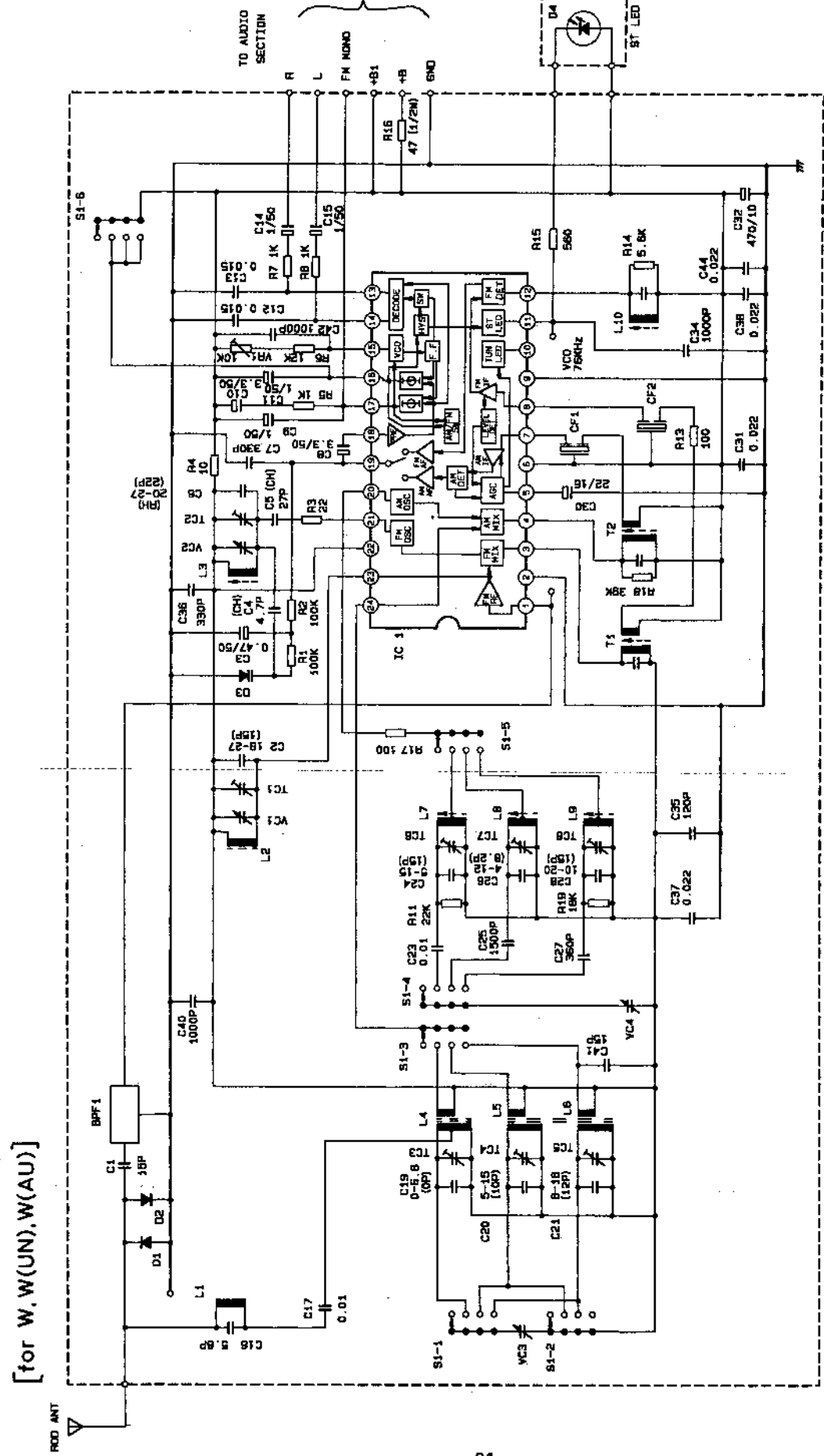


- S1-1 1-6 BAND SWITCH  
 ○ FM 87.4 ~ 108.25MHz [50µS]  
 ○ SW 5.8 ~ 18.5MHz  
 ○ MW 515 ~ 1635KHz  
 ○ LW 145 ~ 290KHz
- SEMICONDUCTOR  
 IC1 : TA8167N  
 D1,2 : 1SS135  
 D3 : SD115  
 D4 : TLR208  
 O1 : 2SC945P
- IF  
 FM 10.7MHz  
 AM 465KHz

--- OMIT NUMBER ---

C44  
R18

CIRCUIT DIAGRAM



S1-1 1-8 BAND SWITCH  
 FM 87.35 ~ 108.0MHz [50µs]  
 SW2 6.7 ~ 23MHz  
 SW1 2.2 ~ 7.3MHz  
 MW 515 ~ 1635kHz

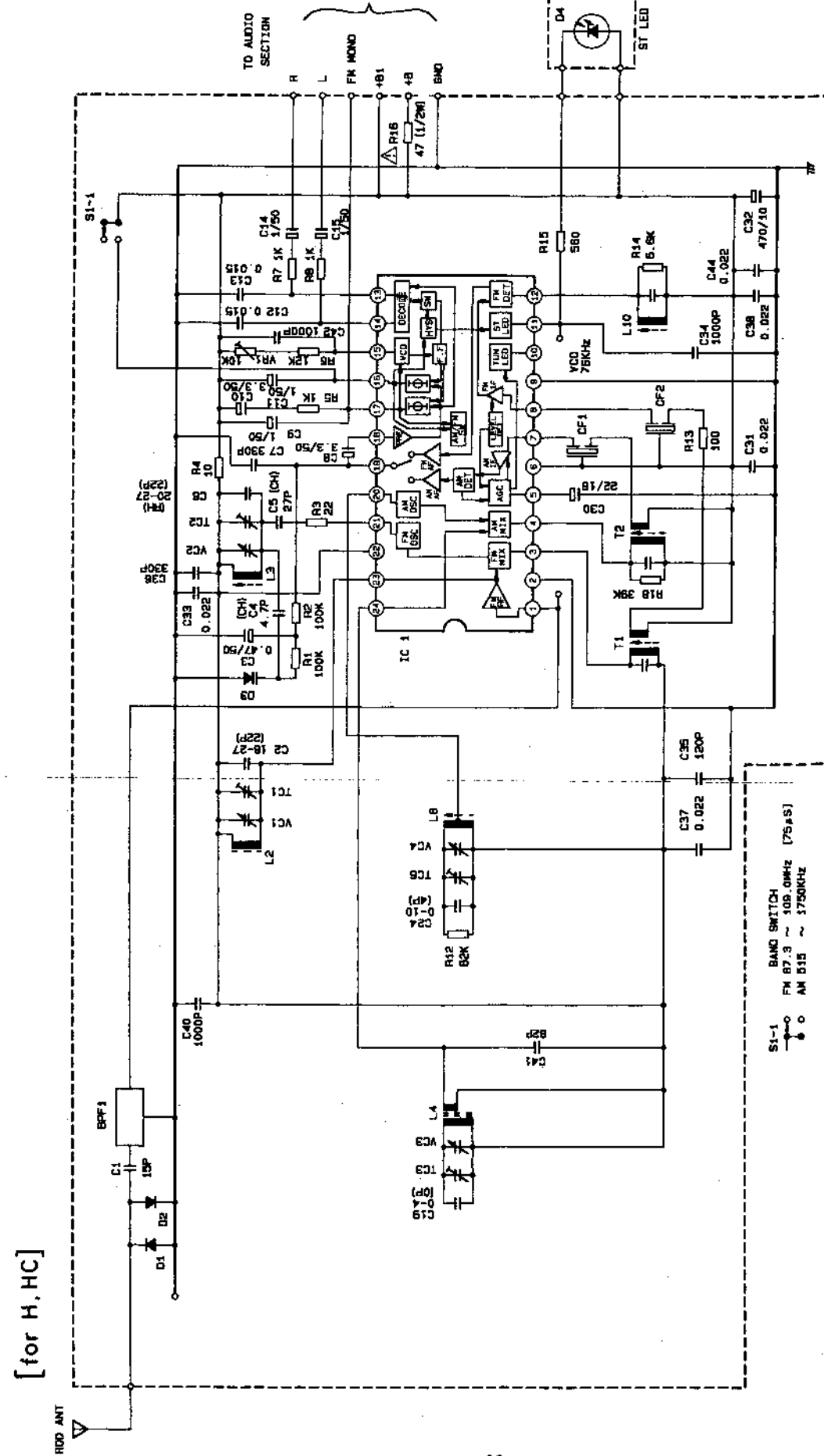
SEMICONDUCTOR  
 IC1 : TAB167N  
 IC2 : 15S133  
 IC3 : 50115  
 IC4 : TLR208

IF  
 FM 10.7MHz  
 AM 455kHz

--- OMIT NUMBER ---  
 R9, 10, 12  
 IC18, 22, 28, 33, 38, 43

[for W(U), W(AU)]

CIRCUIT DIAGRAM



[for H, HC]

S1-1 BAND SWITCH  
 FM 87.3 ~ 108.0MHz [75µs]  
 AM 515 ~ 1750kHz

SEMICONDUCTOR  
 IC1 : TAB167N  
 IC2 : 15S133  
 IC3 : 50115  
 IC4 : TLR208

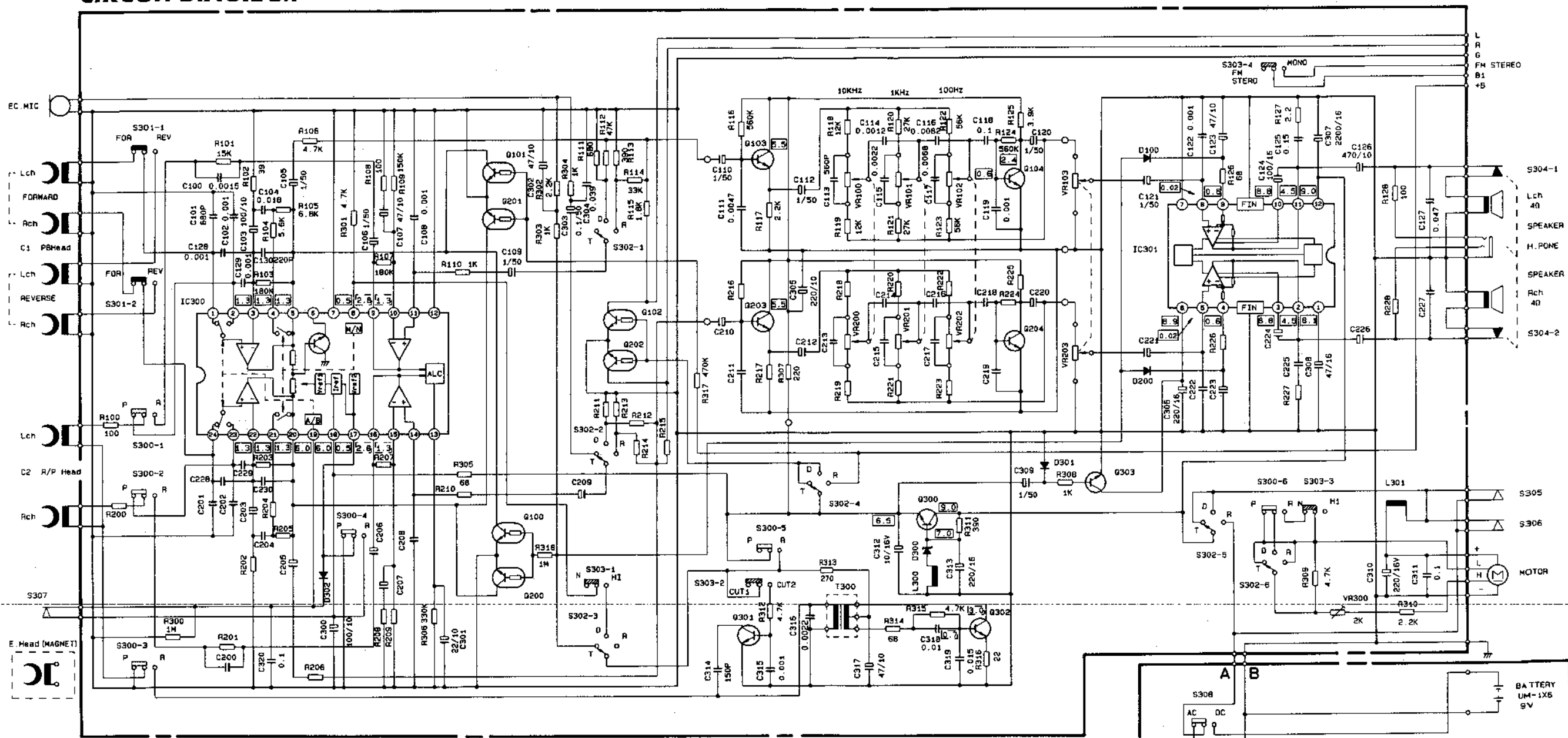
IF  
 FM 10.7MHz  
 AM 455kHz

Make leakage current or resistance measurements to determine that exposed metal parts are acceptably insulated from the supply circuit before returning the appliance to the customer.

Leakage current from microphone jack and battery terminals should not exceed 0.5 mA as measured through a 1.5 kOhm resistor parallelled by a 0.15 µfd capacitor to the earth ground.

--- OMIT NUMBER ---  
 R9, 10, 11, 17  
 IC15, 17, 18, 20, 21, 23, 25, 26, 27, 28, 29, 38, 43  
 IC4, 5

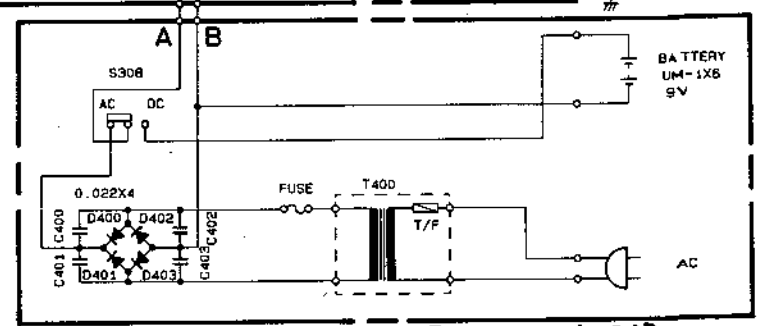
# CIRCUIT DIAGRAM



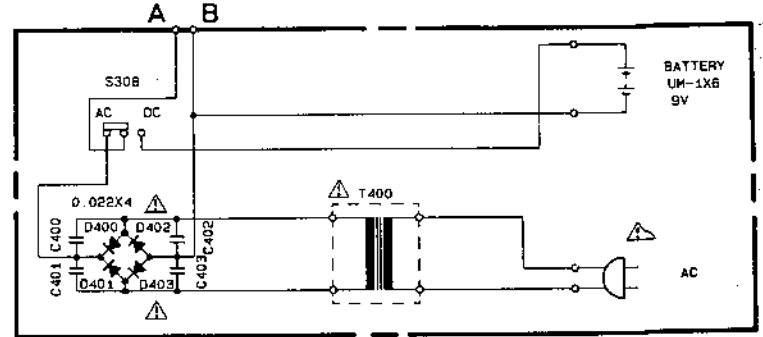
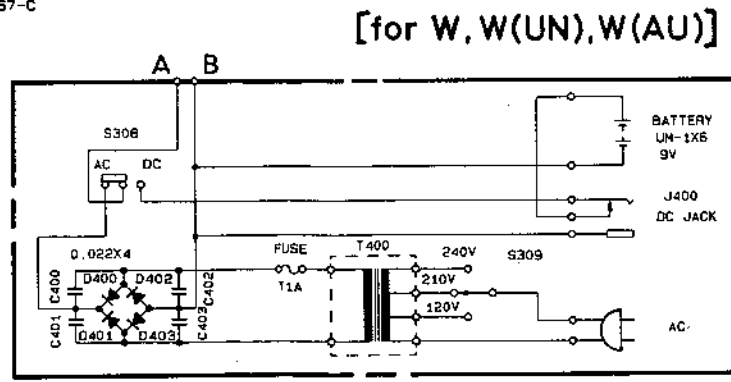
- |                 |  |                     |                            |
|-----------------|--|---------------------|----------------------------|
| S300-1 ~ S300-6 | : PLAY/REC SWITCH (PLAY POSITION)                    | IC300               | : TA8149N                  |
| S301-1 ~ S301-2 | : FORWARD/REVERSE SWITCH (FORWARD POSITION)          | IC301               | : TA8217P                  |
| S302-1 ~ S302-6 | : TAPE/DUBBING/RADIO SWITCH (TAPE POSITION)          | Q100, 101, 102, 200 | : DTC143TS or BA1L3Z       |
| S303-1 ~ S303-4 | : DUBBING SPEED NORMAL/HIGH SWITCH (NORMAL POSITION) | 201, 202            |                            |
|                 | : BEAT CUT1/CUT2 SWITCH (CUT1 POSITION)              | Q103, 104, 203, 204 | : 2SC1740S-P or 2SC245B-GR |
|                 | : FM STEREO / MONO SWITCH (FM STEREO POSITION)       | 301, 302, 303       | : 2SD457-C                 |
| S304-1 ~ S304-2 | : SPEAKER / H. PHONE SWITCH (SPEAKER POSITION)       | Q300                |                            |
| S305            | : CASSETTE1 ON / OFF SWITCH (OFF POSITION)           |                     |                            |
| S306            | : CASSETTE2 ON / OFF SWITCH (OFF POSITION)           |                     |                            |
| S307            | : CASSETTE1 / CASSETTE2 SWITCH (CASSETTE POSITION)   |                     |                            |
| S308            | : AC / BATTERY SWITCH (AC POSITION)                  |                     |                            |

- D100, 200, 301, 302 : 1SS133 or 1SS176 or 1SS270  
 D300 : RD7.5EB1 or RD7.5EB2 or MTZ7.5A or MTZ7.5B  
 D400, 401, 402, 403 : 1N4003

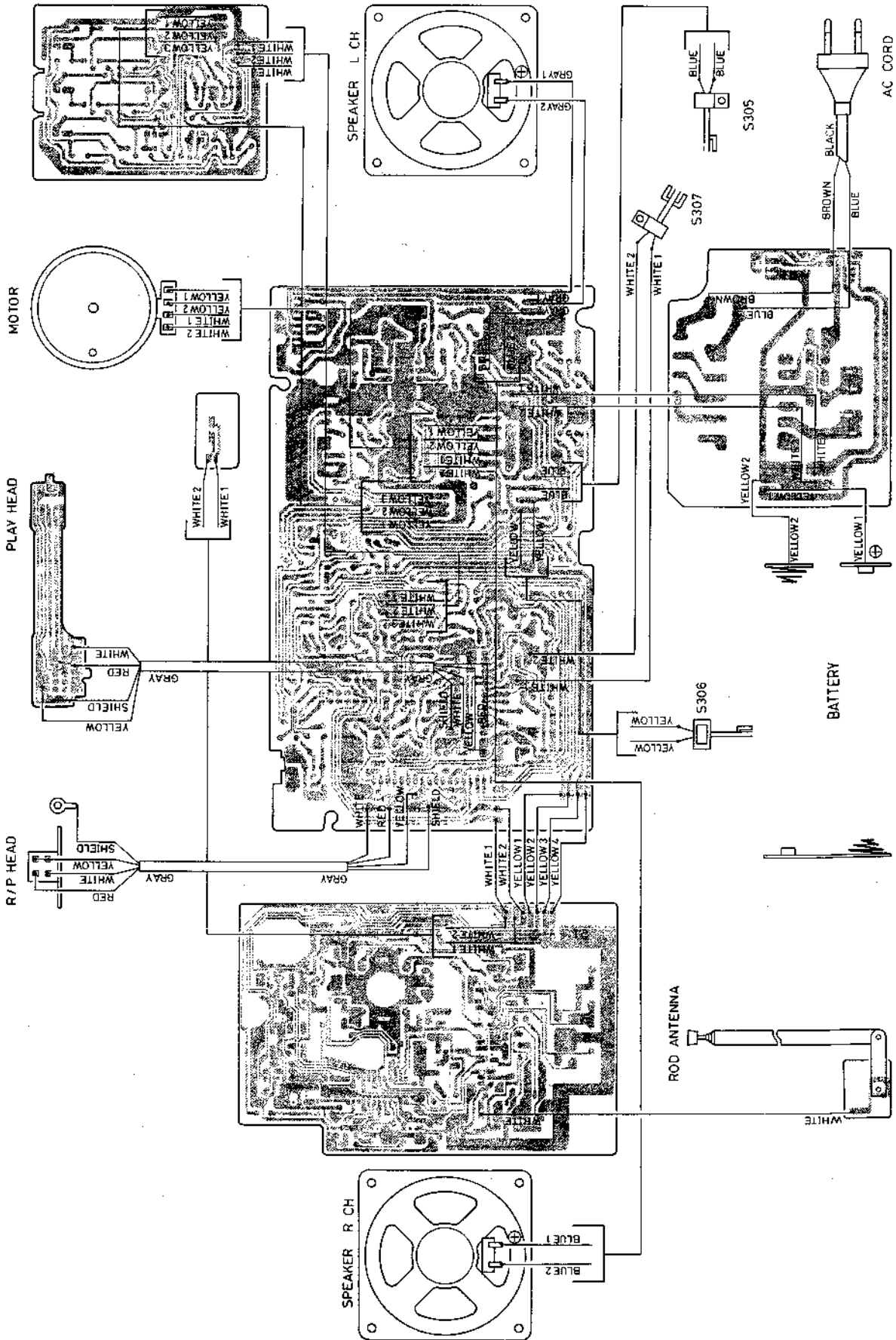
□ INSIDE VALUE IS DC VOLTAGE MEASURED CONDITION  
 □ PLAY NO SIGNAL  
 □ REC NO SIGNAL



[for E, E(BS)]  
 [for H, HC]

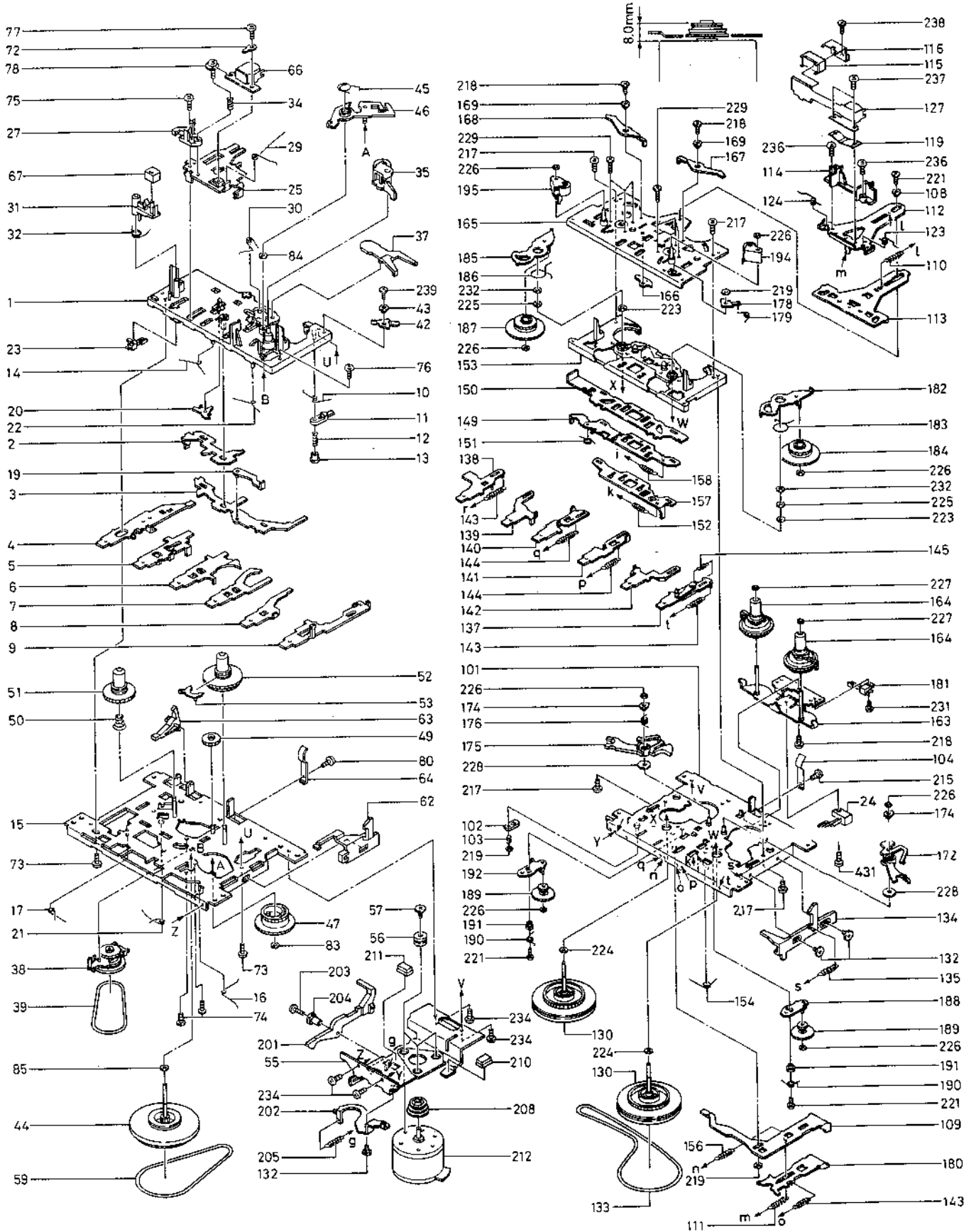


# WIRING DIAGRAM



# EXPLODED VIEW (MECHANISM ASSEMBLY)

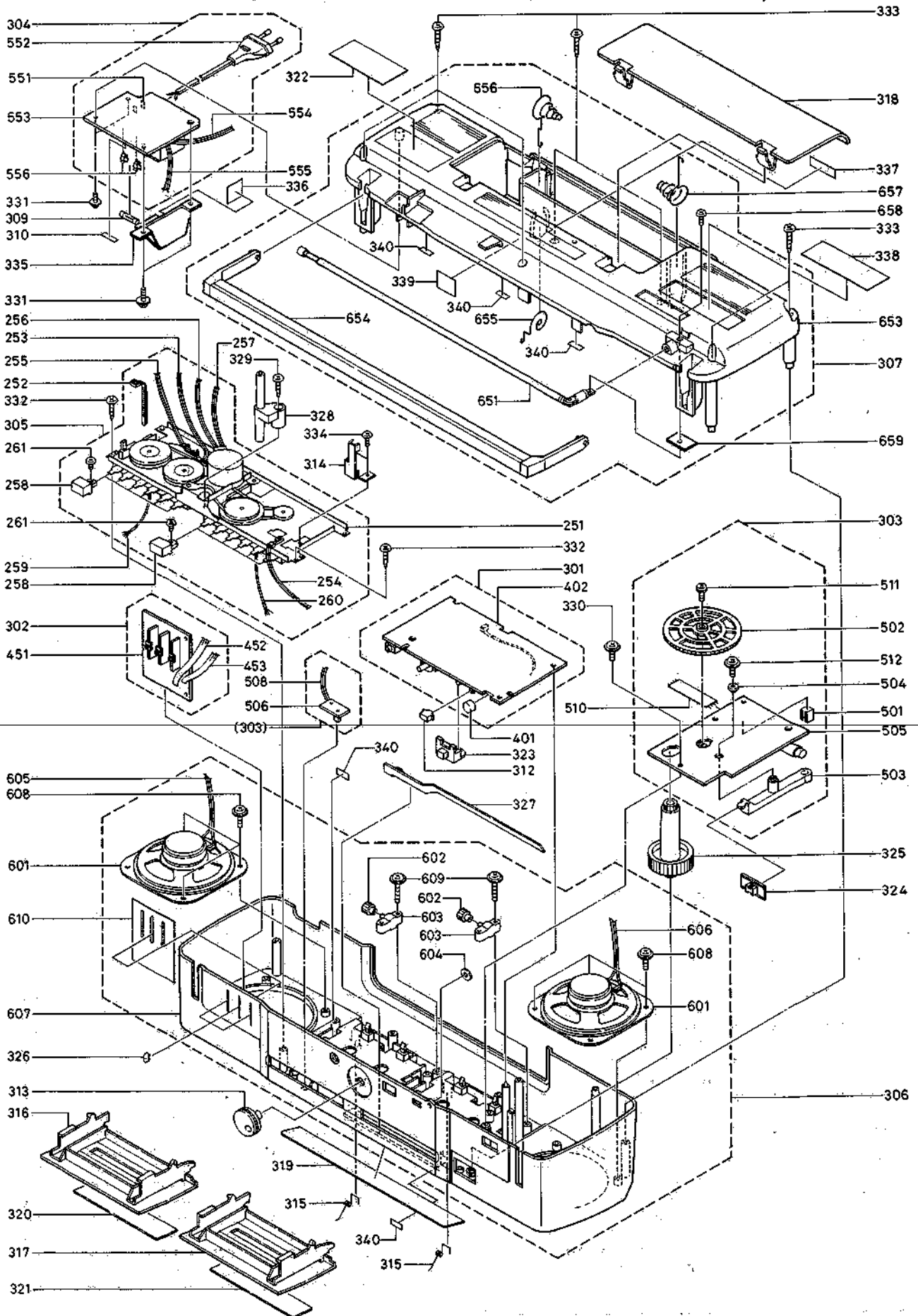
● Nos. are reference Nos. of parts list.



# EXPLODED VIEW (UNIT ASSEMBLY)

TRK-W36K

● Nos. are reference Nos. of parts list.



**REPLACEMENT PARTS LIST**

CC: Cylindrical ceramic    EL: Electrolytic  
 CD: Ceramic discal        MF: Mylar film  
 CF: Carbon film            ST: Styrol

SYMBOL No.	PART No.	DESCRIPTION
<b>ELECTRICAL PARTS LIST</b>		
<b>CAPACITORS</b>		
C 1	9303-151-5-04	CC 15PF ±5% 50V
C 2	9303-151-5-04	CC 15PF ±5% 50V [except H, HC]
	9303-152-2-04	CC 22PF ±5% 50V [for H, HC]
C 3	0937-854-7-96	CE 0.47uF ±20% 50V
C 4	9302-654-7-85	CC 4.7PF ±10% 50V
C 5	0932-242-7-04	CD 27PF ±5% 50V [except H, HC]
	0930-282-2-04	CD 22PF ±5% 50V [for H, HC]
C 6	0930-282-2-04	CD 22PF ±5% 50V [except H, HC]
	0930-242-7-04	CD 27PF ±5% 50V [for H, HC]
C 7	9302-451-0-25	CC 1000PF ±10% 50V [for E, E (BS) ]
	9302-453-3-15	CC 330PF ±10% 50V [except E, E (BS) ]
C 8	0937-853-3-86	CE 3.3uF ±20% 50V
C 9	0937-850-1-06	CE 1uF ±20% 50V
C 10	0937-853-3-86	CE 3.3uF ±20% 50V
C 11	0937-850-1-06	CE 1uF ±20% 50V
C 12	9303-021-0-35	CC 0.01uF ±10% 16V [for E, E (BS) ]
	0938-631-5-35	CD 0.015uF ±10% 25V [except E, E (BS) ]
C 13	9303-021-0-35	CC 0.01uF ±10% 16V [for E, E (BS) ]
	0938-631-5-35	CD 0.015uF ±10% 25V [except E, E (BS) ]
C 14	0936-350-1-06	CE 1uF ±20% 50V
C 15	0936-350-1-06	CE 1uF ±20% 50V
C 16	9303-155-6-85	CC 5.6PF ±10% 50V [except H, HC]
C 17	9303-021-0-35	CC 0.01uF ±10% 16V [except H, HC]
C 18	9303-021-0-35	CC 0.01uF ±10% 16V [for E, E (BS) ]
C 19	9303-151-5-04	CC 15PF ±5% 50V [for E, E (BS) ]
	9303-155-6-85	CC 5.6PF ±10% 50V [for W, W (UN) , W (AU) ]
C 20	9303-151-2-04	CC 12PF ±5% 50V [for E, E (BS) ]
	9303-151-0-04	CC 10PF ±5% 50V [for W, W (UN) , W (AU) ]
C 21	9303-155-6-04	CC 56PF ±5% 50V [for E, E (BS) ]
	9303-151-2-04	CC 12PF ±5% 50V [for W, W (UN) , W (AU) ]
C 22	9303-151-5-04	CC 15PF ±5% 50V [for E, E (BS) ]
C 23	9335-451-0-34	MF 0.01uF ±5% 50V [except H, HC]
C 24	9303-151-8-04	CC 18PF ±5% 50V [for E, E (BS) ]
	9303-151-5-04	CC 15PF ±5% 50V [for W, W (UN) , W (AU) ]
	0930-200-4-00	CD 4PF ±0.25PF 50V [for H, HC]
C 25	0930-453-6-14	ST 360PF ±5% 50V [for E, E (BS) ]
	0930-451-5-24	ST 1500PF ±5% 50V [for W, W (UN) , W (AU) ]
C 26	9303-151-5-04	CC 15PF ±5% 50V [for E, E (BS) ]

SYMBOL No.	PART No.	DESCRIPTION
C 26	9303-158-2-85	CC 8.2PF ±10% 50V [for W, W (UN) , W (AU) ]
C 27	0930-451-8-14	ST 180PF ±5% 50V [for E, E (BS) ]
	0930-453-6-14	ST 360PF ±5% 50V [for W, W (UN) , W (AU) ]
C 28	9303-156-8-84	CC 6.8PF ±10% 50V [for E, E (BS) ]
	9303-151-5-04	CC 15PF ±5% 50V [for W, W (UN) , W (AU) ]
C 29	9302-451-2-15	CC 120PF ±10% 50V [for E, E (BS) ]
C 30	0937-822-2-06	CE 22uF ±20% 16V
C 31	0938-632-2-35	CD 0.022uF ±10% 25V
C 32	0937-814-7-16	CE 470uF ±20% 10V
C 33	0938-632-2-35	CD 0.022uF ±10% 25V [except W, W (UN) , W (AU) ]
C 34	9302-451-0-25	CC 1000PF ±10% 50V
C 35	0930-201-2-14	CD 120PF ±5% 50V
C 36	0931-253-3-15	CD 330PF ±10% 50V
C 37	0938-632-2-35	CD 0.022uF ±10% 25V
C 38	0938-632-2-35	CD 0.022uF ±10% 25V
C 39	9302-726-8-25	CC 6800PF ±10% 16V [for E, E (BS) ]
C 40	9302-451-0-25	CC 1000PF ±10% 50V
C 41	0930-208-2-04	CD 82PF ±5% 50V [for E, E (BS) , H, HC]
	0930-201-5-04	CD 15PF ±5% 50V [for W, W (UN) , W (AU) ]
C 42	0934-251-0-24	ST 1000PF ±5% 50V
C 43	9302-726-8-25	CC 6800PF ±10% 16V [for E, E (BS) ]
C 44	0938-632-2-35	CD 0.022uF ±10% 25V
C 100	9302-721-5-25	CC 1500PF ±10% 16V
C 101	9302-456-8-15	CC 680PF ±10% 50V
C 102	9302-451-0-25	CC 1000PF ±10% 50V
C 103	0937-811-0-16	CE 100uF ±20% 10V
C 104	0938-631-8-35	CD 0.018uF ±10% 25V
C 105	0937-850-1-06	CE 1uF ±20% 50V
C 106	0937-850-1-06	CE 1uF ±20% 50V
C 107	0937-814-7-06	CE 47uF ±20% 10V
C 108	9302-451-0-25	CC 1000PF ±10% 50V
C 109	0937-850-1-06	CE 1uF ±20% 50V
C 110	0936-650-1-06	CE 1uF ±20% 50V
C 111	9302-724-7-25	CC 4700PF ±10% 16V
C 112	0936-650-1-06	CE 1uF ±20% 50V
C 113	9302-455-6-15	CC 560PF ±10% 50V
C 114	9302-721-2-25	CC 1200PF ±10% 16V
C 115	9302-722-2-25	CG 2200PF ±10% 16V
C 116	9303-028-2-25	CC 8200PF ±10% 16V
C 117	9302-726-8-25	CC 6800PF ±10% 16V
C 118	9302-951-0-49	CC 0.1uF +80%-20% 50V
C 119	9302-451-0-25	CC 1000PF ±10% 50V
C 120	0936-650-1-06	CE 1uF ±20% 50V
C 121	0937-850-1-06	CE 1uF ±20% 50V
C 122	9302-451-0-25	CC 1000PF ±10% 50V
C 123	0937-814-7-06	CE 47uF ±20% 10V
C 124	0937-821-0-16	CE 100uF ±20% 16V
C 125	9335-451-5-45	CQ 0.15uF ±10% 50V
C 126	0937-814-7-16	CE 470uF ±20% 10V
C 127	0938-634-7-35	CD 0.047uF ±10% 25V
C 128	0931-831-0-25	CD 1000PF ±10% 25V
C 129	0931-831-0-25	CD 1000PF ±10% 25V
C 130	0931-152-2-15	CD 220PF ±10% 50V
C 200	9302-721-5-25	CC 1500PF ±10% 16V
C 201	9302-456-8-15	CC 680PF ±10% 50V
C 202	9302-451-0-25	CC 1000PF ±10% 50V
C 203	0937-811-0-16	CE 100uF ±20% 10V
C 204	0938-631-8-35	CD 0.018uF ±10% 25V
C 205	0937-850-1-06	CE 1uF ±20% 50V
C 206	0937-850-1-06	CE 1uF ±20% 50V



SYMBOL No.	PART No.	DESCRIPTION
C 207	0937-814-7-06	CE 47uF ±20% 10V
C 208	9302-451-0-25	CC 1000PF ±10% 50V
C 209	0937-850-1-06	CE 1uF ±20% 50V
C 210	0936-650-1-06	CE 1uF ±20% 50V
C 211	9302-724-7-25	CC 4700PF ±10% 16V
C 212	0936-650-1-06	CE 1uF ±20% 50V
C 213	9302-455-6-15	CC 560PF ±10% 50V
C 214	9302-721-2-25	CC 1200PF ±10% 16V
C 215	9302-722-2-25	CG 2200PF ±10% 16V
C 216	9303-028-2-25	CC 8200PF ±10% 16V
C 217	9302-726-8-25	CC 6800PF ±10% 16V
C 218	9302-951-0-49	CC 0.1uF +80%-20% 50V
C 219	9302-451-0-25	CC 1000PF ±10% 50V
C 220	0936-650-1-06	CE 1uF ±20% 50V
C 221	0937-850-1-06	CE 1uF ±20% 50V
C 222	9302-451-0-25	CC 1000PF ±10% 50V
C 223	0937-814-7-06	CE 47uF ±20% 10V
C 224	0937-821-0-16	CE 100uF ±20% 16V
C 225	9335-451-5-45	MF 0.15uF ±10% 50V
C 226	0937-814-7-16	CE 470uF ±20% 10V
C 227	0938-634-7-35	CD 0.047uF ±10% 25V
C 228	0931-831-0-25	CD 1000PF ±10% 25V
C 229	0931-831-0-25	CD 1000PF ±10% 25V
C 230	0931-152-2-15	CD 220PF ±10% 50V
C 300	0937-811-0-16	CE 100uF ±20% 10V
C 301	0937-812-2-06	CE 22uF ±20% 10V
C 302	0937-814-7-06	CE 47uF ±20% 10V
C 303	0937-851-0-96	CE 0.1uF ±20% 50V
C 304	0938-633-9-35	CD 0.039uF ±10% 25V
C 305	0936-612-2-16	CE 220uF ±20% 10V
C 306	0937-822-2-16	CE 220uF ±20% 10V
C 307	0937-722-2-26	CE 2200uF ±20% 16V
C 308	0937-824-7-06	CE 47uF ±20% 16V
C 309	0937-850-1-06	CE 1uF ±20% 50V
C 310	0938-922-2-16	CE 220uF ±20% 16V
C 311	0938-631-0-45	CD 0.1uF ±10. 25V
C 312	0937-822-2-06	CE 22uF ±20% 16V
C 313	0937-822-2-16	CE 220uF ±20% 16V
C 314	9302-451-5-15	CC 150PF ±10% 50V
C 315	9302-451-0-25	CC 1000PF ±10% 50V
C 316	9335-452-2-25	MF 2200PF ±10% 50V
C 317	0937-814-7-06	CE 47uF ±20% 10V
C 318	0938-631-0-35	CD 0.01uF ±10% 25V
C 319	0938-631-5-35	CD 0.015uF ±10% 25V
C 320	0931-831-0-45	CD 0.1uF ±10% 25V
C 400	0931-452-2-39	CD 0.022uF +80%-20% 50V
C 401	0931-452-2-39	CD 0.022uF +80%-20% 50V
C 402	0931-452-2-39	CD 0.022uF +80%-20% 50V
C 403	0931-452-2-39	CD 0.022uF +80%-20% 50V

RESISTORS

R 1	0928-861-0-44	CF 100k ohm ±5% SRD 1/ 6P
R 2	0928-861-0-44	CF 100k ohm ±5% SRD 1/ 6P
R 3	0928-862-2-04	CF 22 ohm ±5% SRD 1/ 6P
R 4	0928-861-0-04	CF 10 ohm ±5% SRD 1/ 6P
R 5	0928-861-0-24	CF 1k ohm ±5% SRD 1/ 6P
R 6	0928-861-2-34	CF 12k ohm ±5% SRD 1/ 6P
R 7	0928-861-0-24	CF 1k ohm ±5% SRD 1/ 6P
R 8	0928-861-0-24	CF 1k ohm ±5% SRD 1/ 6P
R 9	0928-863-3-44	CF 330k ohm ±5% SRD 1/ 6P
		[for E, E (BS) ]
R 10	0928-861-0-14	CF 100 ohm ±5% SRD 1/ 6P
		[for E, E (BS) ]
R 11	0928-862-2-34	CF 22k ohm ±5% SRD 1/ 6P
R 12	0928-861-8-34	CF 18k ohm ±5% SRD 1/ 6P
		[for E, E (BS) ]
	0928-868-2-34	CF 82k ohm ±5% SRD 1/ 6P
		[for H, HC] ]
R 13	0928-861-0-14	CF 100 ohm ±5% SRD 1/ 6P
R 14	0928-865-6-24	CF 5.6k ohm ±5% SRD 1/ 6P

SYMBOL No.	PART No.	DESCRIPTION
R 15	0928-865-6-14	CF 560 ohm ±5% SRD 1/ 6P
△ R 16	0920-024-7-04	CF 47 ohm ±5% SRD 1/ 2P
R 17	0928-861-0-14	CF 100 ohm ±5% SRD 1/ 6P
		[except H, HC]
R 18	0928-863-9-34	CF 39k ohm ±5% SRD 1/ 6P
R 19	0928-861-8-34	CF 18k ohm ±5% SRD 1/ 6P
		[for W, W (UN) , W (AU) ]
R 100	0928-861-0-14	CF 100 ohm ±5% SRD 1/ 6P
R 101	0928-861-5-34	CF 15k ohm ±5% SRD 1/ 6P
R 102	0928-863-9-04	CF 39 ohm ±5% SRD 1/ 6P
R 103	0928-861-8-44	CF 180k ohm ±5% SRD 1/ 6P
R 104	0928-865-6-24	CF 5.6k ohm ±5% SRD 1/ 6P
R 105	0928-866-8-24	CF 6.8k ohm ±5% SRD 1/ 6P
R 106	0928-864-7-24	CF 4.7k ohm ±5% SRD 1/ 6P
R 107	0927-861-8-44	CF 180k ohm ±5% SRD 1/ 6P
R 108	0928-861-0-14	CF 100 ohm ±5% SRD 1/ 6P
R 109	0928-861-5-44	CF 150k ohm ±5% SRD 1/ 6P
R 110	0928-863-0-24	CF 1k ohm ±5% SRD 1/ 6P
R 111	0928-866-8-14	CF 680 ohm ±5% SRD 1/ 6P
R 112	0928-864-7-34	CF 47k ohm ±5% SRD 1/ 6P
R 113	0928-863-9-14	CF 390 ohm ±5% SRD 1/ 6P
R 114	0928-863-3-34	CF 33k ohm ±5% SRD 1/ 6P
R 115	0928-861-8-24	CF 1.8k ohm ±5% SRD 1/ 6P
R 116	0928-865-6-44	CF 560k ohm ±5% SRD 1/ 6P
R 117	0928-862-2-24	CF 2.2k ohm ±5% SRD 1/ 6P
R 118	0928-861-2-34	CF 12k ohm ±5% SRD 1/ 6P
R 119	0928-861-2-34	CF 12k ohm ±5% SRD 1/ 6P
R 120	0928-862-7-34	CF 27k ohm ±5% SRD 1/ 6P
R 121	0928-862-7-34	CF 27k ohm ±5% SRD 1/ 6P
R 122	0928-865-6-34	CF 56k ohm ±5% SRD 1/ 6P
R 123	0928-865-6-34	CF 56k ohm ±5% SRD 1/ 6P
R 124	0928-865-6-44	CF 560k ohm ±5% SRD 1/ 6P
R 125	0928-863-9-24	CF 3.9k ohm ±5% SRD 1/ 6P
R 126	0928-866-8-04	CF 68 ohm ±5% SRD 1/ 6P
△ R 127	0928-862-2-84	CF 2.2 ohm ±5% SRD 1/ 6P
R 128	0928-861-0-14	CF 100 ohm ±5% SRD 1/ 6P
R 200	0928-861-0-14	CF 100 ohm ±5% SRD 1/ 6P
R 201	0928-861-5-34	CF 15k ohm ±5% SRD 1/ 6P
R 202	0928-863-9-04	CF 39 ohm ±5% SRD 1/ 6P
R 203	0928-861-8-44	CF 180k ohm ±5% SRD 1/ 6P
R 204	0928-865-6-24	CF 5.6k ohm ±5% SRD 1/ 6P
R 205	0928-866-8-24	CF 6.8k ohm ±5% SRD 1/ 6P
R 206	0928-864-7-24	CF 4.7k ohm ±5% SRD 1/ 6P
R 207	0927-861-8-44	CF 180k ohm ±5% SRD 1/ 6P
R 208	0928-861-0-14	CF 100 ohm ±5% SRD 1/ 6P
R 209	0928-861-5-44	CF 150k ohm ±5% SRD 1/ 6P
R 210	0928-861-0-24	CF 1k ohm ±5% SRD 1/ 6P
R 211	0928-866-8-14	CF 680 ohm ±5% SRD 1/ 6P
R 212	0928-864-7-34	CF 47k ohm ±5% SRD 1/ 6P
R 213	0928-863-9-14	CF 390 ohm ±5% SRD 1/ 6P
R 214	0928-863-3-34	CF 33k ohm ±5% SRD 1/ 6P
R 215	0928-861-8-24	CF 1.8k ohm ±5% SRD 1/ 6P
R 216	0928-865-6-44	CF 560k ohm ±5% SRD 1/ 6P
R 217	0928-862-2-24	CF 2.2k ohm ±5% SRD 1/ 6P
R 218	0928-861-2-34	CF 12k ohm ±5% SRD 1/ 6P
R 219	0928-861-2-34	CF 12k ohm ±5% SRD 1/ 6P
R 220	0928-862-7-34	CF 27k ohm ±5% SRD 1/ 6P
R 221	0928-862-7-34	CF 27k ohm ±5% SRD 1/ 6P
R 222	0928-865-6-34	CF 56k ohm ±5% SRD 1/ 6P
R 223	0928-865-6-34	CF 56k ohm ±5% SRD 1/ 6P
R 224	0928-865-6-44	CF 560k ohm ±5% SRD 1/ 6P
R 225	0928-863-9-24	CF 3.9k ohm ±5% SRD 1/ 6P
R 226	0928-866-8-04	CF 68 ohm ±5% SRD 1/ 6P
△ R 227	0928-862-2-84	CF 2.2 ohm ±5% SRD 1/ 6P
R 228	0928-861-0-14	CF 100 ohm ±5% SRD 1/ 6P
R 300	0928-861-0-54	CF 1M ohm ±5% SRD 1/ 6P
R 301	0928-864-7-24	CF 4.7k ohm ±5% SRD 1/ 6P
R 302	0928-862-2-24	CF 2.2k ohm ±5% SRD 1/ 6P
R 303	0928-861-0-24	CF 1k ohm ±5% SRD 1/ 6P
R 304	0928-861-0-24	CF 1k ohm ±5% SRD 1/ 6P
R 305	0928-816-8-04	CF 68 ohm ±5% SRD 1/ 4F

SYMBOL No.	PART No.	DESCRIPTION
R 306	0928-863-3-44	CF 330k ohm ±5% SRD 1/ 6P
R 307	0928-862-2-14	CF 220 ohm ±5% SRD 1/ 6P
R 308	0928-861-0-24	CF 1k ohm ±5% SRD 1/ 6P
R 309	0928-864-7-24	CF 4.7k ohm ±5% SRD 1/ 6P
R 310	0928-862-2-24	CF 2.2k ohm ±5% SRD 1/ 6P
R 311	0928-863-9-14	CF 390 ohm ±5% SRD 1/ 6P
R 312	0928-864-7-24	CF 4.7k ohm ±5% SRD 1/ 6P
R 313	0928-862-7-14	CF 270 ohm ±5% SRD 1/ 6P
R 314	0928-866-8-04	CF 68 ohm ±5% SRD 1/ 6P
R 315	0928-864-7-24	CF 4.7k ohm ±5% SRD 1/ 6P
R 316	0928-862-2-04	CF 22 ohm ±5% SRD 1/ 6P
R 317	0928-814-7-44	CF 470k ohm ±5% SRD 1/ 4P
R 318	0928-864-7-44	CF 470k ohm ±5% SRD 1/ 6P

DIODES

BF 1	0039-878-0-00 or 0039-879-0-00	Band-pass Filter
CF 1	0039-088-0-00  0039-015-0-00	Ceramic Filter SFU465B AM [for E, E (BS) ] Ceramic Filter AM
CF 2	0039-005-0-00 or 0039-005-0-41	Ceramic Filter SFE107MA 5-M FM

FILTERS

D 1	0915-003-9-50	ISS 133
D 2	0915-003-9-50	ISS 133
D 3	0915-003-5-00	SD 115
D 4	0916-003-8-00	TLR 208 LED
D 100	0915-003-3-50 or 0915-003-9-50 or 0915-003-6-50	ISS 176 ISS 133 ISS 270
D 200	0915-003-3-50 or 0915-003-9-50 or 0915-003-6-50	ISS 176 ISS 133 ISS 270
D 300	0915-007-0-51 or 0915-007-0-52 or 0915-003-4-52	MTZJ 7.5A MTZJ 7.5B RD7.5EB2
D 301	0915-003-3-50 or 0915-003-9-50 or 0915-003-6-50	ISS 176 ISS 133 ISS 270
D 302	0915-003-3-50 or 0915-003-9-50 or 0915-003-6-50	ISS 176 ISS 133 ISS 270
⚠ D 400	0913-001-9-00	1N 4003
⚠ D 401	0913-001-9-00	1N 4003
⚠ D 402	0913-001-9-00	1N 4003
⚠ D 403	0913-001-9-00	1N 4003

IC's and TRANSISTORS

IC 1	0911-105-3-00	TA8167N Tuner Circuit
IC 300	0911-122-7-00	TA8149N Pre/Rec/ALC amp.
⚠ IC 301	0911-122-8-00	TA8217P Power Amp.

Q 1	0906-200-4-55 or 0906-201-9-16	2SC 1815-GR [for E, E (BS) ] 2SC 945P-A
Q 100	0906-206-3-12 or 0906-202-9-00	BA1L 3Z DTC 143TS
Q 101	0906-206-3-12 or 0906-202-9-00	BA1L 3Z DTC 143TS
Q 102	0906-206-3-12 or 0906-202-9-00	BA1L 3Z DTC 143TS
Q 103	0906-201-8-55 or 0906-203-3-18	2SC 2458-GR 2SC 1740S-R
Q 104	0906-201-8-55 or 0906-203-3-18	2SC 2458-GR 2SC 1740S-R
Q 200	0906-206-3-12 or 0906-202-9-00	BA1L 3Z DTC 143TS

SYMBOL No.	PART No.	DESCRIPTION
Q 201	0906-206-3-12 or 0906-202-9-00	BA1L 3Z DTC 143TS
Q 202	0906-206-3-12 or 0906-202-9-00	BA1L 3Z DTC 143TS
Q 203	0906-201-8-55 or 0906-203-3-18	2SC 2458-GR 2SC 1740S-R
Q 204	0906-201-8-55 or 0906-203-3-18	2SC 2458-GR 2SC 1740S-R
⚠ Q 300	0906-202-0-03	2SD 467-C
Q 301	0906-201-8-55 or 0906-203-3-18	2SC 2458-GR 2SC 1740S-R
Q 302	0906-201-8-55 or 0906-203-3-18	2SC 2458-GR 2SC 1740S-R
Q 303	0906-201-8-55 or 0906-203-3-18	2SC 2458-GR 2SC 1740S-R

JACKS

J300	0033-469-0-00	Mini Jack 3.5mm Headphone
J400	0033-635-1-00	Ext DC Jack [for W, W (UN) , W (AU) ]

COILS

L 1	0013-111-0-00	Coil W/O Core [except H, HC]
L 2	0013-024-0-00	Coil FM Ant.
L 3	0014-312-0-00	Coil FM Osc.
L 4	0014-354-0-00  0014-356-0-00	Coil SW Ant. [for E, E (BS) ] Coil SW2 Ant.
L 5	0016-238-0-00	Bar Antenna [for H, HC]
L 5/ 6	0016-237-0-00	Bar Antenna [for E, E (BS) ]
L 5/ 6	0016-239-0-00	Bar Antenna [for W, W (UN) , W (AU) ]
L 7	0014-355-0-00  0014-357-0-00	Coil SW Osc. [for E, E (BS) ] Coil SW2 Osc.
L 8	0014-729-0-00  0014-731-0-00	Coil MW Osc. [for E, E (BS) ] Coil SW1 Osc.
L 9	0014-517-0-40 0014-730-0-00  0014-729-0-00	Coil MW Osc. [for H, HC] Coil LW Osc. [for E, E (BS) ] Coil MW Osc. [for W, W (UN) , W (AU) ]
L 10	0012-198-0-00	FM IFT- 7 FM Detect
L 300	0013-036-0-51 or 0013-036-0-09 or 0013-036-0-52	Coil Choke
L 301	0911-401-0-05	LHL06TB100K 100H

SWITCHES

S 1	0028-299-0-00  0028-298-0-00	Slide Switch Band Select [for H, HC] Slide Switch Band Select [except H, HC]
S 300	0028-296-0-00	Slide Switch Record/Play
S 302	0028-295-0-00	Slide Switch Tape/Dubbing/Radio
S 303	0028-003-0-00	Push Switch Dubbing Speed and Beat Cut
S 308	0028-297-0-00	Slide Switch AC/DC Select
S 309	0036-025-0-00	Rotary Switch Voltage Select [for W ,W (UN) ,W (AU) ]

SYMBOL No.	PART No.	DESCRIPTION
<b>TRANSFORMERS</b>		
T 1	0012-197-0-00	FM IFT-7 FM 1st
T 2	0012-317-0-00	AM IFT-7 AM 1st
T 300	0015-062-0-00	Osc Transformer
⚠ T 400	0019-406-0-00	Power Transformer [for E ]
⚠	0019-407-0-00	Power Transformer [for E (BS) ]
⚠	0019-618-0-00	Power Transformer [for H, HC]
⚠	0019-889-0-00	Power Transformer [for W ,W (UN) ,W (AU) ]
<b>TRIMER CAPACITORS</b>		
TC3	0030-058-0-00 or 0030-058-0-40	Trimer Capacitor [except H, HC]
TC4	0030-058-0-00 or 0030-058-0-40	Trimer Capacitor [except H, HC]
TC5	0030-057-0-00 or 0030-057-0-40 0030-058-0-00 or 0030-058-0-40	Trimer Capacitor [for E, E (BS) ] Trimer Capacitor [for W ,W (UN) ,W (AU) ]
TC6	0030-058-0-00 or 0030-058-0-40	Trimer Capacitor [except H, HC]
TC7	0030-058-0-00 or 0030-058-0-40	Trimer Capacitor [except H, HC]
TC8	0030-057-0-00 or 0030-057-0-40 0030-058-0-00 or 0030-058-0-40	Trimer Capacitor [for E, E (BS) ] Trimer Capacitor [for W ,W (UN) ,W (AU) ]
<b>VARIABLE CAPACITOR</b>		
VC1	0030-136-0-00 or 0030-133-0-00 0030-135-0-00 or 0030-123-0-00	Variable Capacitor [for H, HC] Variable Capacitor [for E,E (BS) ,W,W (UN) ,W (AU) ]
<b>VARIABLE RESISTORS</b>		
VR1	0031-818-1-03 or 0031-837-1-03 or 0031-835-1-03	SF Volume Control 10k ohm
VR100	0031-333-1-54	Slide Potentiometer 150k ohm
VR101	0031-333-1-54	Slide Potentiometer 150k ohm
VR102	0031-333-1-54	Slide Potentiometer 150k ohm
VR103	0031-553-2-03	Volume Control 20k ohm
VR300	0031-818-2-02 or 0031-835-2-02 or 0031-871-2-02	SF Volume Control 2k ohm

SYMBOL No.	PART No.	DESCRIPTION
MECHANISM PARTS LIST		
1	1921 14 301	Base Ass'y
2	1921 14 09	Switch Actuator
3	1921 14 08	Push Button Actuator
4	1921 14 03	REC Button Lever
5	1921 14 19	PLAY Button Ass'y
6	1921 14 04	REW Button Lever
7	1921 14 05	FF Button Lever
8	1921 14 06	STOP Button Lever
9	1921 14 60	PAUSE Button Lever
10	1921 14 13A	P Control Spring
11	1921 14 55	PAUSE Lever (E)
12	1921 14 12	PAUSE Lever Spring
13	1921 14 11	PAUSE Stopper
14	1921 14 14	Button Lever Spring
15	1921 01 501	Chassis Ass'y
16	1921 14 16	E Actuator Spring
17	1921 14 17	P. S. Lever Spring
18	Not Used	
19	1821 01 159	E Kick Lever
20	1921 14 20	PR Stopper
21	1821 14 21	REC Button Lever Spring
22	1921 14 15	Button Lever Spring
23	6401 01 149	Leaf Switch MSW-1541T
24	6401 01 38	Leaf Switch MSW-1275
25	1921 03 11	Head Panel
26	Not Used	
27	1921 03 04	Head Base
28	Not Used	
29	1921 03 03	Panel P Spring
30	1921 14 18	M Control Spring
31	Not Used	
32	1921 03 10	MG Arm Spring
33	1921 03 05	MG Arm
34	1821 03 07	Azimuth Spring
35	1921 04 301	Pinch Roller Arm Ass'y
36	Not Used	
37	1921 26 04	Sensing Lever
38	1921 07 302	RF Clutch Ass'y
39	1921 07 03	RF Belt
40	Not Used	
41	Not Used	
42	1921 14 34	P Arm
43	1921 14 37	P Arm Collar
44	1921 09 303	Flywheel Ass'y
45	1921 26 05	Gear Plate Spring
46	1921 26 502	Gear Plate Ass'y
47	1921 26 02	Cam Gear
48	Not Used	
49	1821 10 70	FF Gear
50	1821 10 99	Back Tension Spring
51	1921 05 304	Supply Reel Ass'y
52	1921 05 303	Take Up Reel Ass'y
53	1921 05 06	Sensor
54	Not Used	
55	1851 14 07	Motor Bracket
56	1821 12 66	Motor Rubber
57	1851 14 18	Motor Collar Screw
58	Not Used	
59	1821 12 173	Main Belt
60	Not Used	
61	Not Used	
62	1921 13 01	EJECT Slide Lever
63	1821 10 69	REC Safety Lever
64	1829 10 06	Pack Spring
65	Not Used	
66	6201 01 75	R/P Head PR-7442BS-0951
67	6209 10 10	E Head PH-K380-MSI-6A
68	Not Used	
69	Not Used	
70	Not Used	

SYMBOL No.	PART No.	DESCRIPTION
71	Not Used	
72	9480 00 00	Lug 3B) 2.0
73	9679 00 00	P Tapping Bind Screw M2 x 5
74	9999 18-09	Camera Tapping Screw M2 x 4.5
75	9004 00 00	Screw M2 x 6
76	9182 00 00	C Tapping Screw M2 x 6
77	9115 00 00	+Bind Screw M2 x 3
78	9922 00 00	Azimuth Screw M2 x 7
79	Not Used	
80	9178 00 00	C Tapping Screw M2 x 3 (Special)
81	Not Used	
82	Not Used	
83	9422 00 00	P Washer Cut 1.2 x 3.8 x 0.3
84	9999 03 13	P Washer Cut 1.45 x 3.8 x 0.5
85	9786 00 00	P Washer 2 x 3.5 x 0.3
86	Not Used	
100		
101	1851 01 301	Chassis Ass'y
102	1821 01 15	PAUSE Lever
103	1821 01 16	PAUSE Lever Spring
104	1829 10 06	Pack Spring
105	Not Used	
106	Not Used	
107	Not Used	
108	1851 04 53	H. P. Collar V
109	1851 04 08	Release Plate
110	1851 04 09	R. C. Plate Spring
111	1851 04 10	R. C. Spring
112	1851 04 01	Head Panel
113	1851 04 02	R. C. Plate
114	1851 04 03	Tape Guide
115	6403 02 04	Slide Switch R 66 31 67
116	1851 16 01	Switch Bracket
117	Not Used	
118	Not Used	
119	1851 04 05	Head Spring Plate
120	Not Used	
121	Not Used	
122	Not Used	
123	1851 04 06	Pinch Roller Spring (F)
124	1851 04 07	Pinch Roller Spring (R)
125	Not Used	
126	Not Used	
127	6202 03 27	PLAY Head MR 35P-KF030
128	Not Used	
129	Not Used	
130	1851 12 504	Flywheel Ass'y
131	Not Used	
132	1821 12 23	P. K. Collar Screw (A)
133	1821 12 142	Main Belt
134	1851 17 01	EJECT Slide Lever
135	1851 17 02	EJECT Slide Lever Spring
136	Not Used	
137	1851 02 303	PROG Button Lever Ass'y
138	1851 02 308	MODE Button Lever Ass'y
139	1851 02 06	PLAY Button Lever
140	1851 02 09	FF Button Lever (R)
141	1851 02 08	FF Button Lever (F)
142	1851 02 05	STOP Button Lever
143	1851 02 70	PROG Button Lever Spring
144	1851 02 24	FF Button Lever Spring
145	1851 02 27	Pull Arm Spring
146	Not Used	
147	Not Used	
148	Not Used	
149	1851 02 301	Lock Actuator Ass'y
150	1851 02 17	Slide Plate
151	1851 02 20	Lock Release Spring
152	1851 02 26	Switch Actuator Spring
153	1851 02 501	Button Base Ass'y
154	1851 02 21	STOP Button Lever Spring

SYMBOL No.	PART No.	DESCRIPTION
155	Not Used	
156	1851 02 42	Button Lever Spring
157	1851 02 302	Switch Actuator Ass'y
158	1851 02 25	Lock Actuator Spring
159	Not Used	
160	Not Used	
161	Not Used	
162	Not Used	
163	1851 11 301	Reel Plate Ass'y
164	1851 11 501	Reel Ass'y
165	1851 18 303	Sub Chassis Ass'y
166	1851 18 04	RC Arm
167	1851 18 05	Auto Control Arm (F)
168	1851 18 06	Auto Control Arm (R)
169	1851 18 07	Control Arm Collar
170	Not Used	
171	Not Used	
172	1851 20 01	Auto Lever (F)
173	1851 20 03	Auto Lever (R) Spring
174	1851 20 05	Spring Stopper
175	1851 20 02	Auto Lever (R)
176	1851 20 04	Auto Lever (F) Spring
177	Not Used	
178	1851 03 01	Turn Over Arm
179	1851 03 02	Turn Over Spring
180	1851 16 02	FF Switch Plate
181	6401 01 151	Leaf Switch MSW-1290CV
182	1851 05 303	T Gear Arm (F) Ass'y
183	1851 05 04	T Gear Arm (F) Spring
184	1851 05 03	T Cam Gear (F)
185	1851 06 303	T Gear Arm (R) Ass'y
186	1851 06 03	T Gear Arm (R) Spring
187	1851 06 02	T Cam Gear (R)
188	1851 07 301	FF Gear Arm (F) Ass'y
189	1851 07 03	FF Gear
190	1851 07 04	FF Gear Arm Spring (F)
191	1851 07 05	FF Gear Arm Collar
192	1851 08 301	FF Gear Arm (R) Ass'y
193	Not Used	
194	1851 09 501	Pinch Roller (F) Ass'y
195	1851 10 501	Pinch Roller (R) Ass'y
196	Not Used	
to		
200		
201	1921 12 25	P Kick Lever (B)
202	1851 14 06	P Kick Lever (A)
203	9182 00 00	+C Tapping Screw M2 x 6
204	1821 12 65	Collar B
205	1851 14 04	P Kick Lever Spring
206	Not Used	
207	Not Used	
208	1851 14 30	Motor Pulley
209	Not Used	
210	1821 12 109	Anti-Vibration Felt Mat
211	1800 10 84	Anti-Vibration Felt Mat
212	6003 02 31	Motor SHU-9L 00
213	Not Used	
214	Not Used	
215	9178 00 00	C Tapping Screw M2 x 3 (Special)
216	Not Used	
217	9674 00 00	P Tapping Screw M2 x 6
218	9693 00 00	Camera S Tapping Screw M1.7 x 3
219	9876 00 00	P Washer Cut 2.1 x 5 x 0.5
220	Not Used	
221	9695 00 00	Camera S Tapping Screw M1.7 x 4
222	Not Used	
223	9786 00 00	P Washer 2 x 3.5 x 0.3
224	9889 00 00	P Washer 2.1 x 3 x 0.3
225	9999 03 09	P Washer Cut 1.45 x 4 x 0.5
226	9421 00 00	P Washer Cut 1.2 x 3 x 0.25
227	9888 00 00	P Washer Cut 1.2 x 3 x 0.4
228	9999 00 09	P washer 3 x 8.5 x 0.13

SYMBOL No.	PART No.	DESCRIPTION
229	9999 13 03	Camera S Tapping Screw M1.7 x 8.5
230	Not Used	
231	9181 00 00	+C Tapping Screw M2 x 5
232	9999 00 13	P Washer 1.75 x 4 x 0.3
233	Not Used	
234	9180 00 00	C Tapping Screw M2 x 4
235	Not Used	
236	9079 00 00	+Tams Screw M2 x 6
237	9999 20 07	Screw M2 x 4.5
238	9692 00 00	Camera S Tapping Screw M1.7 x 2.5
239	9999 20 41	PS Tapping M2 x 3
251	1240-100-0-00	Mechanism Set
252	0064-631-0-00	Bar Lock Cable Tie
253	1240-531-0-00	PCB Joiner
254	1240-532-0-00	PCB Joiner
255	1240-533-0-00	PCB Joiner
256	1240-534-0-00	PCB Joiner
257	1240-535-0-00	PCB Joiner
258	1240-860-0-01	Push Button
259	0963-601-8-00	Shield Wire
260	0963-602-1-00	Shield Wire
261	0977-220-0-35	DT Screw P 2 x 3-SK

## CABINET PARTS LIST

301	1240-001-0-00	Amplifier PCB Unit
302	1240-010-0-00	GEQ PCB Unit
303	1240-014-0-00	Tuner PCB Unit [for E, E (BS) ]
	1240-016-0-00	Tuner PCB Unit [for W, W (UN), W (AU) ]
	1240-018-0-00	Tuner PCB Unit [for H, HC]
304	1240-030-0-00	Power Supply PCB Unit [for E ]
	1240-031-0-00	Power Supply PCB Unit [for E (BS) ]
	1240-032-0-00	Power Supply PCB Unit [for H, HC]
	1240-034-0-00	Power Supply PCB Unit [for W, W (UN) ]
	1240-035-0-00	Power Supply PCB Unit [for W (AU) ]
305	1240-040-0-01	Mechanism Unit
306	1240-080-0-01	Case Unit [for E, E (BS) ]
	1240-080-0-02	Case Unit [for W, W (UN), W (AU) ]
	1240-081-0-01	Case Unit [for H, HC]
307	1240-090-0-01	Case B Unit [for E ]
	1240-091-0-01	Case B Unit [for E (BS) ]
	1240-092-0-01	Case B Unit [for W, W (UN), W (AU) ]
	1240-093-0-01	Case B Unit [for H, HC]
309	0045-007-1-41	Fuse 1A/T 250V [except H, HC]
311	0064-631-0-00	Bar Lock Cable Tie
312	0818-863-0-03	Switch Kob B
313	1232-861-2-01	Volume Knob
314	1240-180-0-00	REC Switch Spring
315	1240-401-0-00	Spiral Spring
316	1240-805-0-01	Up Case L
317	1240-806-0-01	Up Case R
318	1240-807-0-01	Battery Cover
319	1240-825-0-04	Dial Sheet [for E, E (BS) ]

SYMBOL No.	PART No.	DESCRIPTION
319	1240-825-0-01	Dial Sheet [for H, HC]
	1240-825-0-05	Dial Sheet [for W, W (UN), W (AU) ]
320	1240-826-0-01	Up Case Sheet
321	1240-826-0-02	Up Case Sheet
322	1240-850-0-06	Rear Label [for E ]
	1240-850-0-01	Rear Label [for H ]
	1240-850-0-02	Rear Label [for HC]
	1240-850-0-03	Rear Label [for W ]
	1240-850-0-04	Rear Label [for W (UN) ]
	1240-850-0-05	Rear Label [for W (AU) ]
	1240-850-0-07	Rear Label [for E (BS) ]
323	1240-861-0-01	Function Kob
324	1240-862-0-01	Band Switch Knob
325	1240-863-0-01	Tuning Knob
326	1240-864-0-01	GEQ Knob
327	1240-865-1-01	Pointer
328	1240-866-0-00	Joint Boss
329	0976-030-1-21	Screw TP3 x 12-SN-A
330	0976-930-1-05	Screw TPB3 x 10-SK-C
331	0976-930-1-25	Screw TPB3 x 12-SK-C
332	0977-030-0-85	Screw TP3 x 8-SK-C
333	0977-030-2-05	Screw TP3 x 20-SK-C
334	0977-220-0-35	DT Screw P 2 x 3-SK
335	1240-112-2-00	Trans Supporter
336	1240-882-0-00	Himeron A
337	1240-856-0-00	S/N Label [except H ]
	1240-859-0-00	S/N Label [for H ]
338	1240-853-0-01	DBP Label [for E ]
339	1240-930-0-02	Caution Label
340	0062-932-1-00	Himeron
401	0024-243-0-00	EC Mic WM-54BT
402	1240-500-1-00	Amplifier PCB
451	1240-505-0-91	GEQ PCB
452	1240-536-0-00	Flat Cable
453	1240-537-0-00	Flat Cable
501	0346-190-0-00	Shield Case
502	1220-264-1-00	Varicon Gear
503	1240-270-0-00	Band Switch Arm
504	1240-271-0-00	Switch Shaft
505	1240-520-1-91	Tuner PCB [except H, HC]
	1240-521-1-91	Tuner PCB [for H, HC]
506	1240-520-1-92	LED PCB [except H, HC]
	1240-521-1-92	LED PCB [for H, HC]
507	Not Used	
508	1240-551-0-00	PCB Joiner 2Pin
509	1240-553-0-00	PCB Joiner
510	1240-554-0-00	Flat Cable 4Pin
511	0971-826-0-61	Screw P 2.6 x 6-SN-S
512	0976-930-1-05	Screw TPB3 x 10-SK-C
551	0034-326-0-00	Pin Terminal
△ 552	0047-292-0-00	AC Cord [for E ]

SYMBOL No.	PART No.	DESCRIPTION
△ 552	0047-296-0-00	AC Cord [for E (BS) ]
△	0047-159-0-00	AC Cord [for H, HC]
△	0047-293-0-00	AC Cord [for W, W (UN) ]
△	0047-291-0-00	AC Cord [for W (AU) ]
553	1240-510-0-00	Power Supply PCB [for E, E (BS) ]
	1240-512-0-00	Power Supply PCB [for H, HC]
	1240-511-0-00	Power Supply PCB [for W, W (UN), W (AU) ]
554	1240-552-1-00	PCB Joiner
555	1240-540-0-00	PCB Joiner
556	0045-501-0-00	Fuse Holder
or	0045-507-0-00	[except H, HC]
557	1240-880-0-00	Rubber Cushion [for W, W (UN), W (AU) ]
601	0023-169-0-00	Speaker D 100-4
602	0860-880-0-00	Gear
603	0860-881-0-00	Gear Holder
604	1220-867-0-00	Mic Cushion
605	1240-538-1-00	PCB Joiner
606	1240-539-0-00	PCB Joiner
607	1240-800-0-01	Case Set [for E, E (BS) ]
	1240-810-0-01	Case Set [for H, HC]
	1240-800-0-02	Case Set [for W, W (UN), W (AU) ]
608	0976-930-0-85	Screw TPB3 x 8-SK-C
609	0977-030-1-65	Screw TP3 x 16-SK-C
610	1240-560-0-00	Shield Plate
651	0046-088-0-00	Rod Antenna
or	0046-088-0-42	
652	Not Used	
653	1240-803-1-01	Case B [for E ]
	1240-813-1-01	Case B [for E (BS) ]
	1240-814-1-01	Case B [for W, W (UN), W (AU) ]
	1240-815-1-01	Case B [for H, HC]
654	1240-868-0-01	Handle Set
655	1240-870-1-00	Plus Terminal
656	1240-871-0-00	Com Spring
657	1240-872-0-00	Battery Terminal
658	0971-026-0-85	Screw P 2.6 x 8-SK
659	1240-520-1-93	Antenna PCB

SYMBOL No.	PART No.	DESCRIPTION
ACCESSORESE		
	0098-001-8-00	Poly Bag PB-13 x 25
	0998-009-6-00	Poly Bag PB-65 x 44-5
	0098-013-1-00	Poly Bag PB-20 x 31 [for H, HC, E (BS) ]
	0083-972-0-00	Poly Bag PB-20 x 32 [for E ]
	1369-859-0-00	DBP Sheet [for E only]
	1240-858-0-00	Sticker
	1240-900-0-00	Styrofoam L
	1240-901-0-00	Styrofoam R
	1240-910-0-03	Gift Box [for E, E (BS) ]
	1240-910-0-06	Gift Box [for W (AU) ]
	1240-910-0-01	Gift Box [for H ]
	1240-910-0-02	Gift Box [for HC ]
	1240-910-0-04	Gift Box [for W ]
	1240-910-0-05	Gift Box [for W (UN) ]
	1240-920-0-05	Instruction [for E ]
	1240-920-0-03	Instruction [for E (BS) ]
	1240-920-0-01	Instruction [for H, HC ]
	1240-920-0-04	Instruction [for W, W (UN) , W (AU) ]
	1240-925-0-00	Warranty Card [for E (BS) ]
	1240-921-0-00	Warranty Card [for H ]
	1240-924-0-00	Warranty Card [for HC ]
	1240-924-0-03	Warranty Card [for W (AU) ]
	1240-114-0-00	Warning Label [for E (BS) ]
	1369-922-0-00	Service Station List [for H ]
	0032-005-6-00	Conversion Plug [for W, W (UN) ]

**HITACHI SALES EUROPA GmbH**  
Rungedamm 2, 2050 Hamburg 80,  
West Germany  
Tel. 040-734 11-0

**HITACHI SALES (U.K.) Ltd.**  
Hitachi House, Station Road, Hayes, Middlesex UB3  
4DR, England  
Tel. 01-848-8787

**HITACHI SALES SCANDINAVIA AB**  
Domnarvsgatan 29, LUNDA, Box 1134, S-16422  
Tel. 08-760-03-00

**HITACHI SALES NORWAY A/S**  
P.O. Box 68, Bruket 31, 1620 Gressvik, Norway  
Tel. 09-32-62-55

**SUOMEN HITACHI OY**  
Takojanokatu 5, 15800 Lahti 80, Finland  
Tel. (918) 44 241

**HITACHI SALES A/S**  
Kuldysen 13, DK-2630, Taastrup, Denmark  
Tel. 02-999200

**HITACHI SALES A.G.**  
Bahnhofstrasse, 19, 5600 Lenzburg, Switzerland  
Tel. 064-5 13621

**HITACHI SALES WARENHANDELS GMBH**  
A-1180/Wien, Kreuzgasse 27, Austria  
Tel. 0222-421670

**HITACHI SALES ITALIANA, S.P.A.**  
Via Cristoforo Colombo 49, Trezzano sul naviglio  
(Milano), Italy  
Tel. 44 59 031

**HITACHI SALES BELGIUM S.A./N.V.**  
Chaussee de Namur, 56, B-1400 Nivelles, Belgium  
Tel. (3267) 21-71-81, (3267) 21-79-81

**HITACHI SALES IBERICA, S.A.**  
Gran Via Carlos Tercero, 101, 1-1, Barcelona-08028,  
Spain  
Tel. 330-8652

**HITACHI PRODUCTIONS MAROC ELECTRONIQUES  
DOMESTIQUES S.A.**  
Rue du Havre, Casablanca, Morocco  
Tel. 30-73-68, 30-73-57

**HITACHI CANARIAS S.A.**  
Calle San-Francisco No. 19, 38002, Santa Cruz de Tenerife  
Canary Islands  
Tel. 24-64-98

**HITACHI SALES (HELLAS) S.A.**  
110 Syngrou St., Athens, Greece  
Tel. 9219082, 9233489

**HITACHI SALES (MALAYSIA) SDN. BHD.**  
Wisma Hitachi, No. 2, Lorong 13/8A, 46200 Petaling  
Jaya, Malaysia  
Tel. 7573455

**HITACHI (SINGAPORE) PTE., LTD.**  
18 Pasir Panjang Road # 01-03 PSA  
Multi-Storey Complex, Singapore 0511  
Tel. 2738102

**HITACHI SALES (THAILAND) LTD.**  
2240-46, New Petchburi Road, Bangkok, Hueykuang  
Bangkok, Thailand  
Tel. 314-2741

**HITACHI ELECTRIC SERVICE CO., (HONG KONG) LTD.**  
4th Floor Leun Tai Industrial Bldg., 72-76 Kwai Cheong  
Road Kwai Chung N.T., Hong Kong  
Tel. 0-242976, 0-240126

**HITACHI SALES AUSTRALIA PTY LTD.**  
153 Keys Road, Moorabbin, Victoria 3189 Australia  
Tel. 565-8722

**HITACHI SALES CORPORATION OF AMERICA**  
Eastern Regional Office  
1290 Wall Street West, Lyndhurst, New Jersey 07071,  
U.S.A.  
Tel. 201-935-8980

**Mid-Western Regional Office**  
1400 Morse Ave., Elk Grove Village, Illinois. 60007, U.S.A.  
Tel. 312-593-1550

**Southern Regional Office**  
510 Plaza Drive, College Park, Georgia 30349, U.S.A.  
Tel. 404-763-0360

**Headquarters Western Regional Office**  
401 West Artesia Boulevard, Compton, California 90220  
U.S.A.  
Tel. 213-537-8383

**HITACHI SALES CORPORATION OF HAWAII, INC.**  
3219 Koapaka Street, Honolulu, Hawaii 96819, U.S.A.  
Tel. 808-836-3621

**HITACHI (HSC) CANADA INC.**  
3300 Trans-Canada Highway, Pointe Claire, Quebec,  
H9R 1B1, Canada  
Tel. 514-697-9150

**Hitachi Sales Centroamericana, S.A.**  
**HITACHI ELECTRONICA CENTROAMERICANA S.A.**  
San Rafael de Escazu, Apartado 10272, San Jose,  
Costa Rica  
Tel. 28-20-11, 28-00-37

**Hitachi Sales Corporation de Panama, S.A.**  
**INTERNATIONAL HITACHI SALES PANAMA, LTD.**  
**PRODUCTOS HITACHI, S.A.**  
(Apartado 7657) Panama 5 Panama City, Rep. of Panama  
Tel. 61-3100, 61-4305

**HITACHI-FRANCE (RADIO-T.V. ELECTRO-MENAGER) S.A.**  
95-101 Rue Charles Michels,  
93200 SAINT-DENIS,  
France  
Tel. 4821 8015

**HITACHI LTD. TOKYO JAPAN**

Head Office: THE HITACHI ATAGO BLDG.  
No. 15-12, 2-Chome Nishi-Shinbashi  
Minato-ku, Tokyo 105, Japan  
Tel. Tokyo (03) 502-2111

**TRK-W360E TY No. 649E**