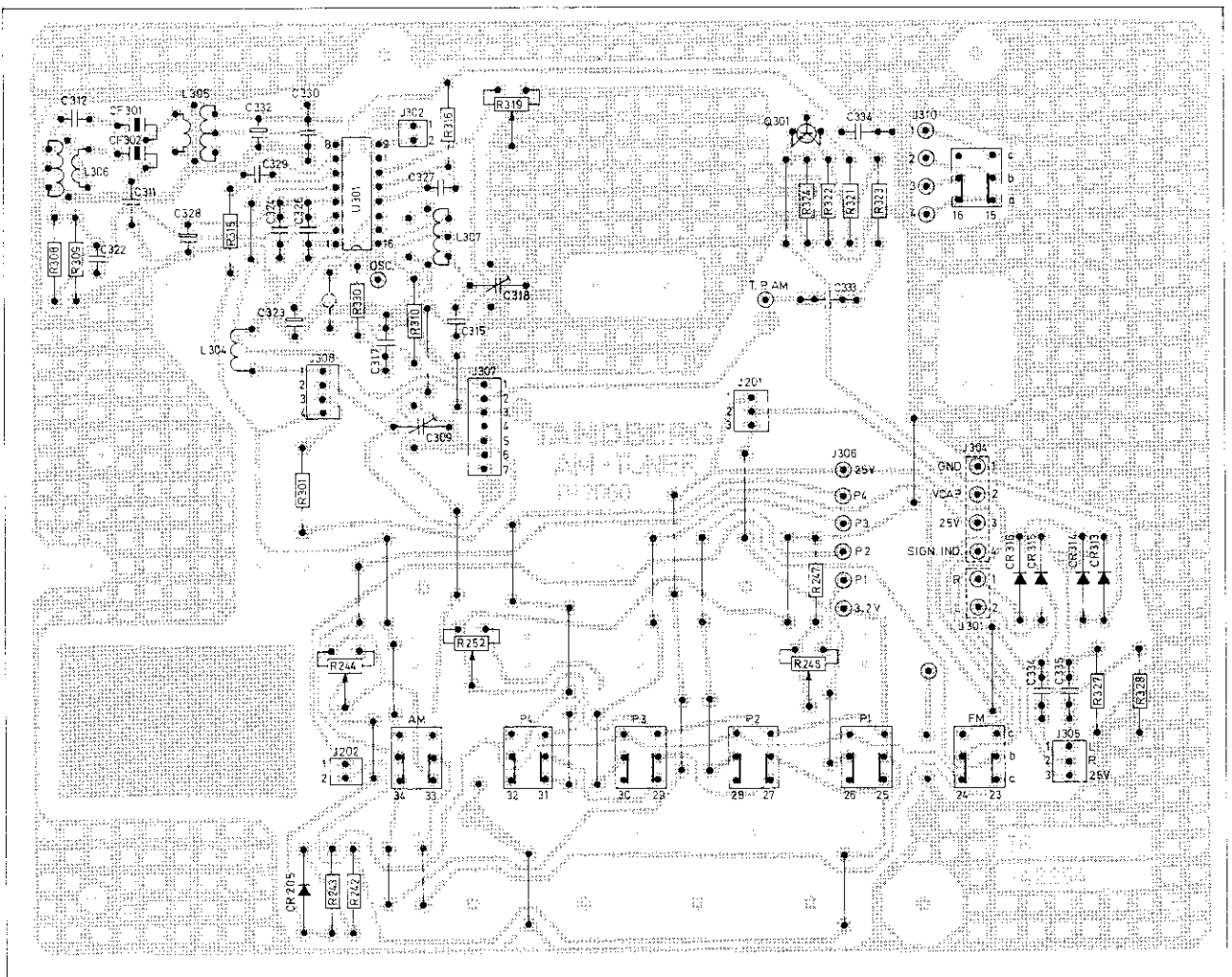


# TANDBERG

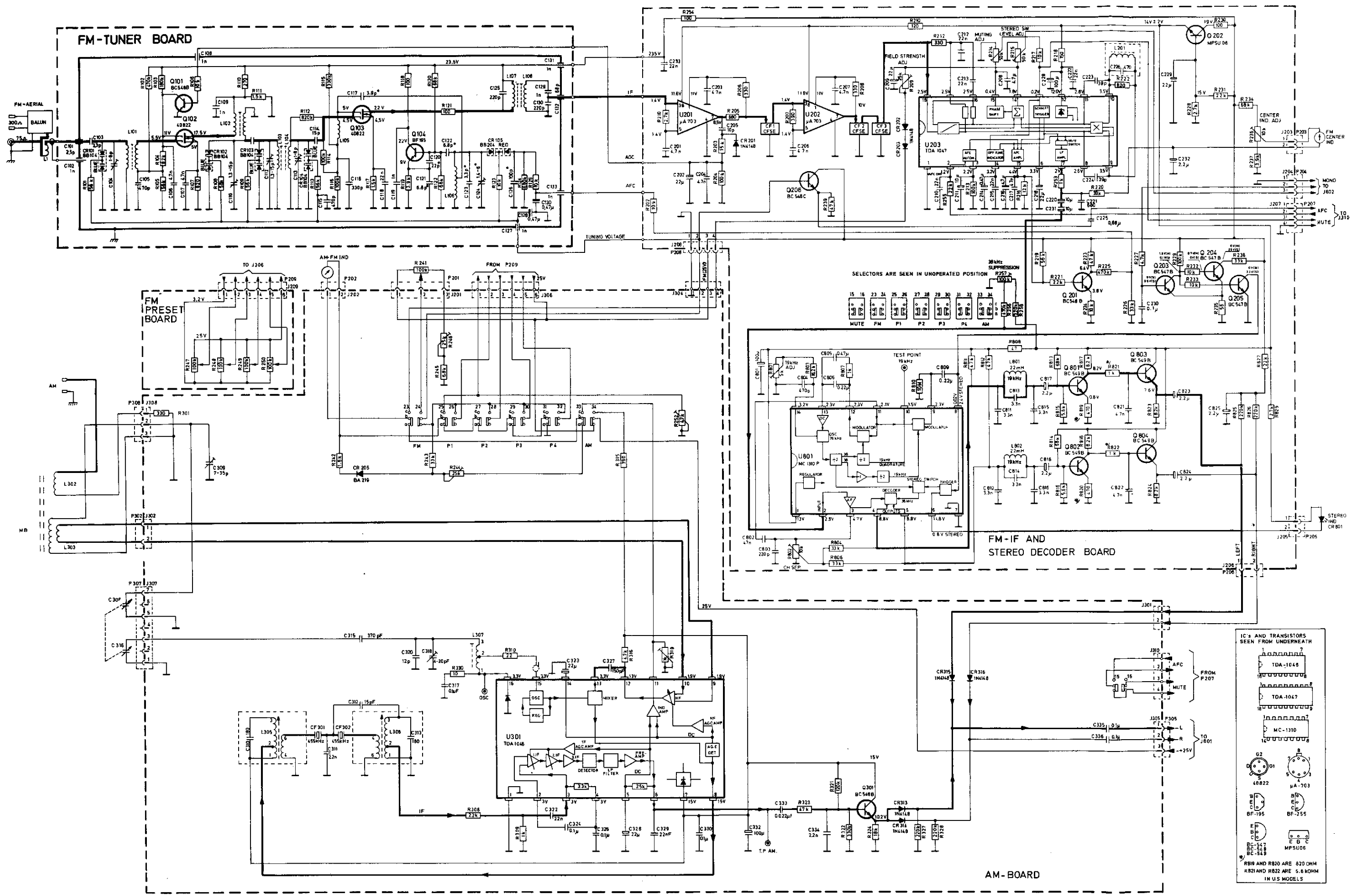
## TR2060

### Circuit diagrams

#### AM-TUNER



Seen from the solder side



ICs AND TRANSISTORS SEEN FROM UNDERNEATH

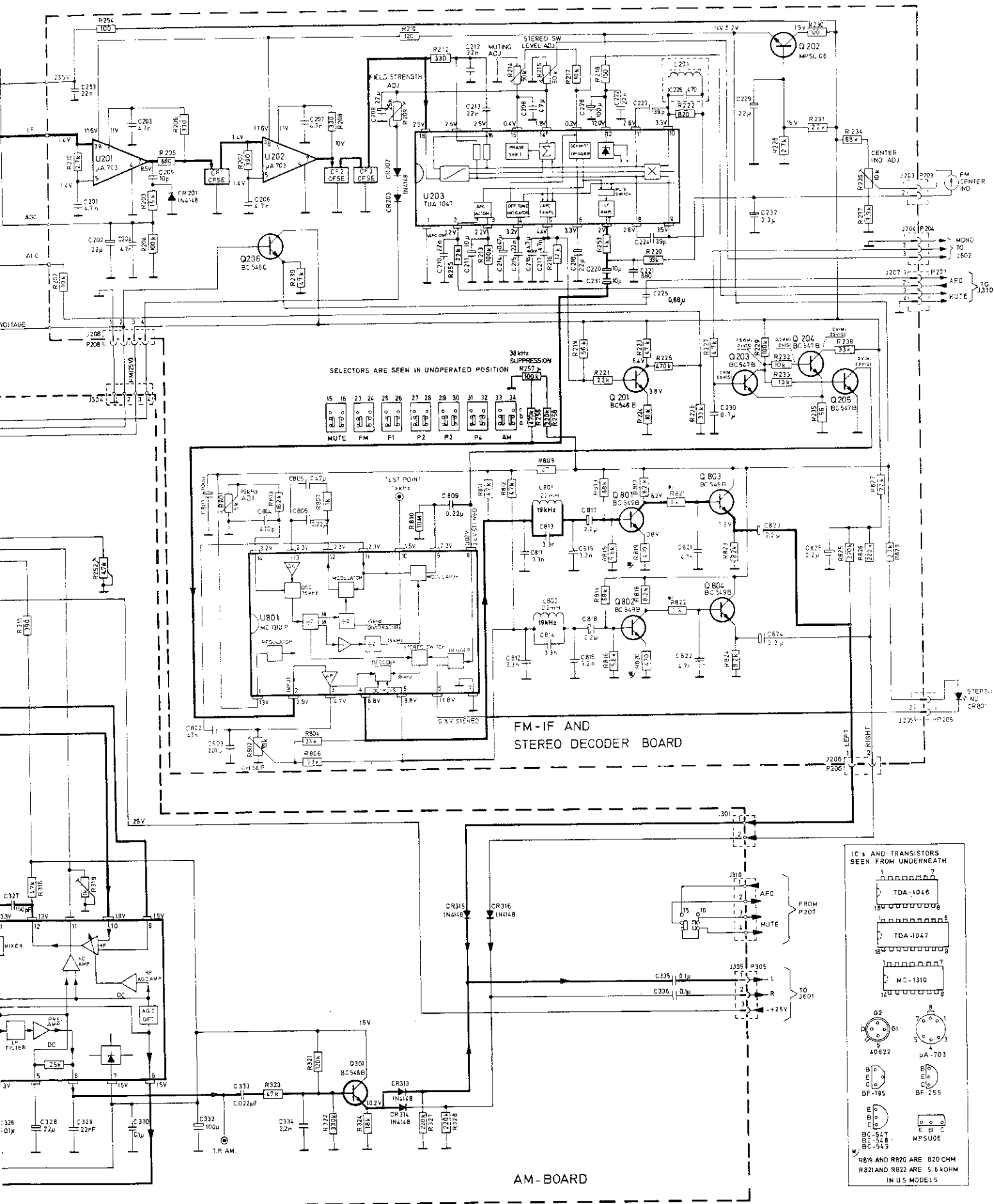
7	TDA-1046
8	TDA-1047
14	MC-1310
14	MC-1310
14	MC-1310
14	MC-1310
8	Q1
8	Q2
8	Q3
8	Q4
8	Q5
8	Q6
8	Q7
8	Q8
8	Q9
8	Q10
8	Q11
8	Q12
8	Q13
8	Q14
8	Q15
8	Q16
8	Q17
8	Q18
8	Q19
8	Q20
8	Q21
8	Q22
8	Q23
8	Q24
8	Q25
8	Q26
8	Q27
8	Q28
8	Q29
8	Q30
8	Q31
8	Q32
8	Q33
8	Q34
8	Q35
8	Q36
8	Q37
8	Q38
8	Q39
8	Q40
8	Q41
8	Q42
8	Q43
8	Q44
8	Q45
8	Q46
8	Q47
8	Q48
8	Q49
8	Q50
8	Q51
8	Q52
8	Q53
8	Q54
8	Q55
8	Q56
8	Q57
8	Q58
8	Q59
8	Q60
8	Q61
8	Q62
8	Q63
8	Q64
8	Q65
8	Q66
8	Q67
8	Q68
8	Q69
8	Q70
8	Q71
8	Q72
8	Q73
8	Q74
8	Q75
8	Q76
8	Q77
8	Q78
8	Q79
8	Q80
8	Q81
8	Q82
8	Q83
8	Q84
8	Q85
8	Q86
8	Q87
8	Q88
8	Q89
8	Q90
8	Q91
8	Q92
8	Q93
8	Q94
8	Q95
8	Q96
8	Q97
8	Q98
8	Q99
8	Q100

RESISTOR VALUES: R819 AND R820 ARE 820 OHM, R821 AND R822 ARE 5.6 KOHM IN U.S. MODELS

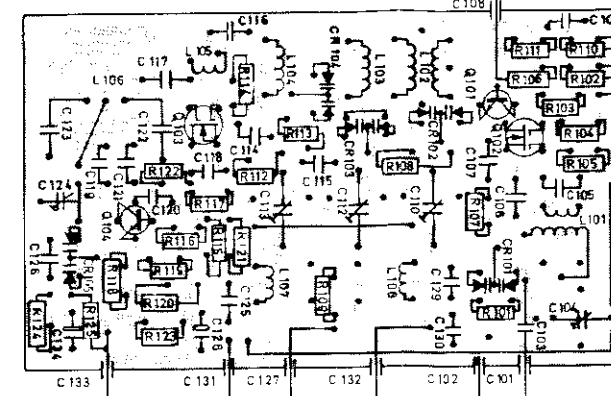
HF - SECTION NO. 42274

MF-IF/DE

Seen from 1

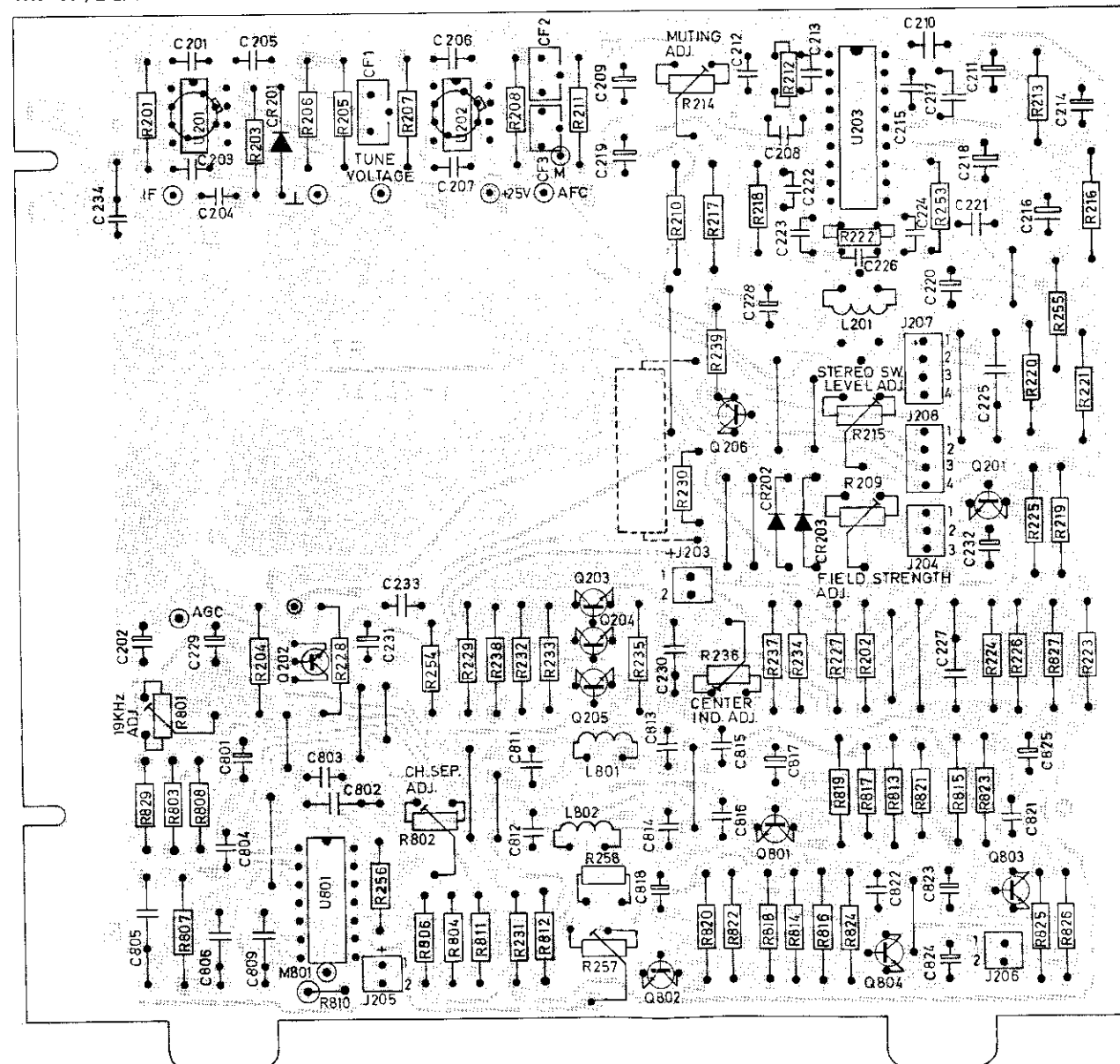


FM-TUNER



Seen from the solder side

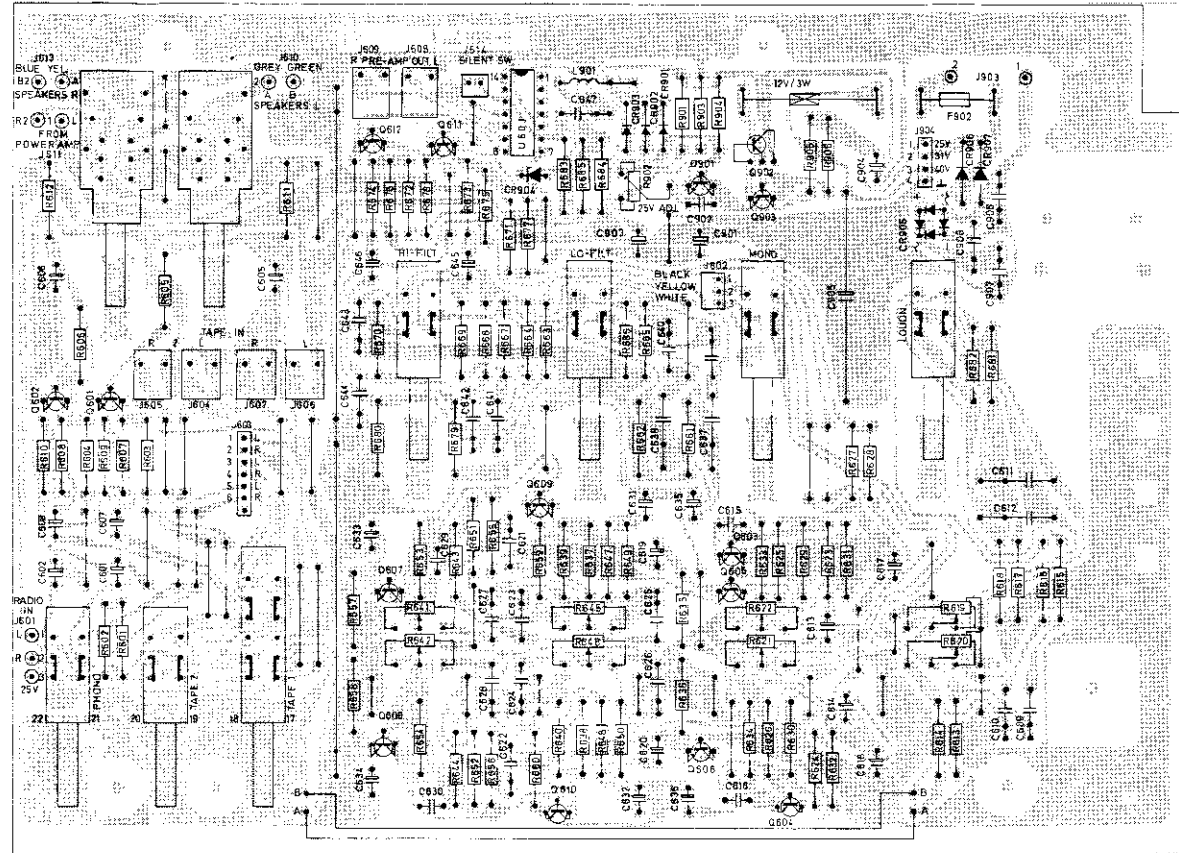
MF-IF/DECODER



Seen from the solder side

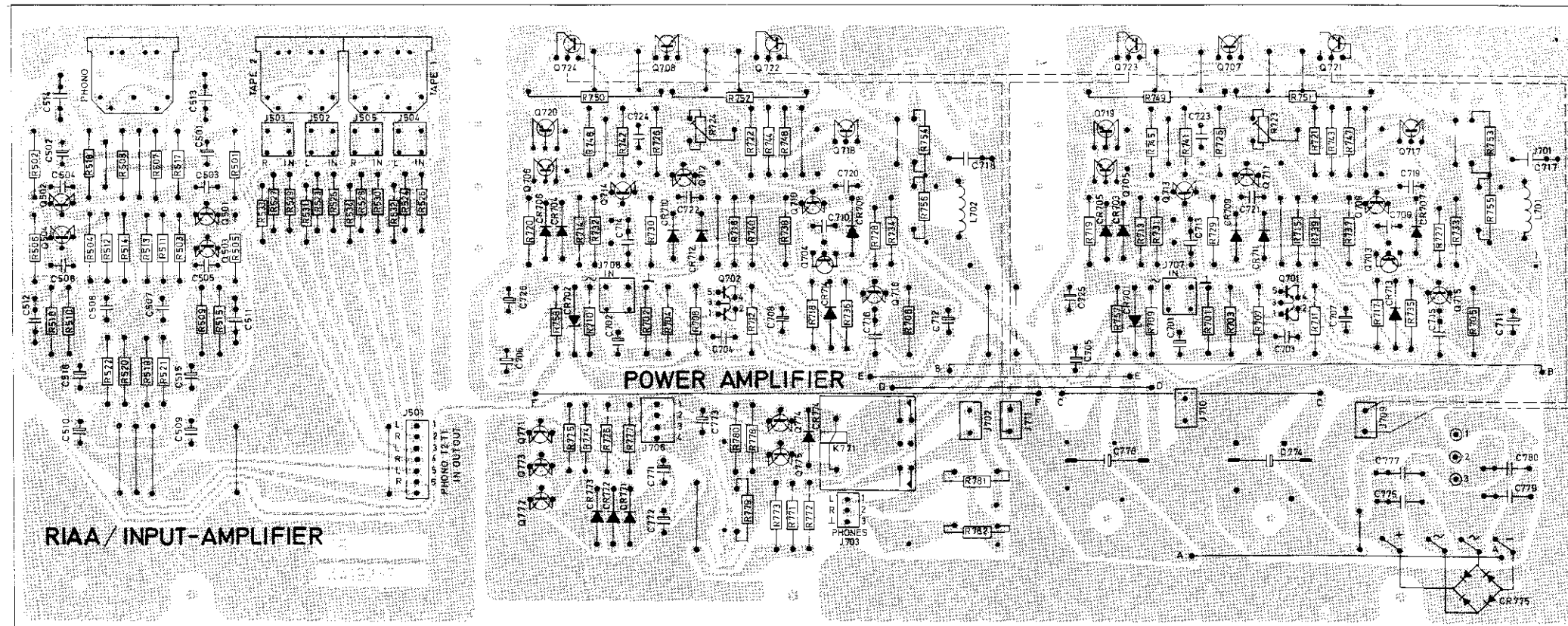


PRE-AMPLIFIER



Seen from the solder side

RIAA/INPUT-AMPLIFIER, POWER-AMPLIFIER



Seen from the solder side