

# Service Manual

## AUTOMOTIVE ELECTRONICS



### MITSUBISHI CQ-EB0260L

AM/FM MPX ELECTRONIC TUNING  
RADIO with 6-Disc CD Changer

MITSUBISHI PART No. : MR570499

VEHICLE : MONTERO SPORT

DESTINATION : North America

PRODUCED AFTER : Nov., 2002

## Specifications\*

### General

Power Supply	DC 12V (11V - 16V), Test Voltage 13.2V, Negative Ground
Current Consumption	Less than 1.0A
Output Voltage	More than 200mV
Output Impedance	10k $\Omega$

### AM Radio

Frequency Range	530 - 1,710kHz
Usable Sensitivity	26dB/ $\mu$ V (S/N 20dB)

### FM Stereo Radio

Frequency Range	87.75 - 107.9MHz
Usable Sensitivity	7dB/ $\mu$ V (S/N 30dB)

### CD Player

Signal to Noise Ratio	More than 66dB
Total Harmonic Distortion	Less than 0.4%
Channel Separation	More than 55dB

**Dimension\*\* (W×H×D)** 178 × 100 × 166.7mm

**Weight\*\*** 2.15kg

\* Specifications and the design are subject to possible modification without notice due to improvements.

\*\* Dimensions and Weight shown are approximate.

# CONTENTS

	Page		Page
1 FEATUERS .....	2	9 REPLACEMENT PARTS LIST .....	13
2 LASER PRODUCTS .....	2	10 EXPLODED VIEW (Unit) .....	18
3 SYSTEM BLOCK DIAGRAM .....	3	11 CD CHANGER PARTS LIST .....	19
4 FRONT AND REAR VIEW .....	4	12 EXPLODED VIEW (CD Deck-1) .....	22
5 WIRING CONNECTIONS .....	5	13 EXPLODED VIEW (CD Deck-2) .....	23
6 BLOCK DIAGRAM .....	6	14 EXPLODED VIEW (CD Deck-3) .....	24
7 TERMINALS DESCRIPTION .....	8	15 WIRING DIAGRAM .....	25
8 PACKAGE AND IC BLOCK DIAGRAM .....	10	16 SCHEMATIC DIAGRAM .....	29

## 1 FEATUERS

- 9-Pro tuner pack.
- 18-station preset (12-FM, 6-AM)
- FM One-tuner diversity.
- 6-Disc CD changer (in dash board)
- Electronic control of power and sound.
- Emergency ejecting function
- Anti-shock memory
- Disk direct selection.
- CD random, repeat function.
- MD control.
- MD-CH control.
- Infinity amp connection.

## 2 LASER PRODUCTS

**Do not take apart this unit or attempt to make any changes yourself.**

This unit is very intricate that uses a laser pickup to retrieve information from the surface of compact discs. The laser is carefully shielded so that its rays remain inside the cabinet. Therefore, never try to disassemble the player or alter any of its parts since you may be exposed to laser rays and dangerous voltages.

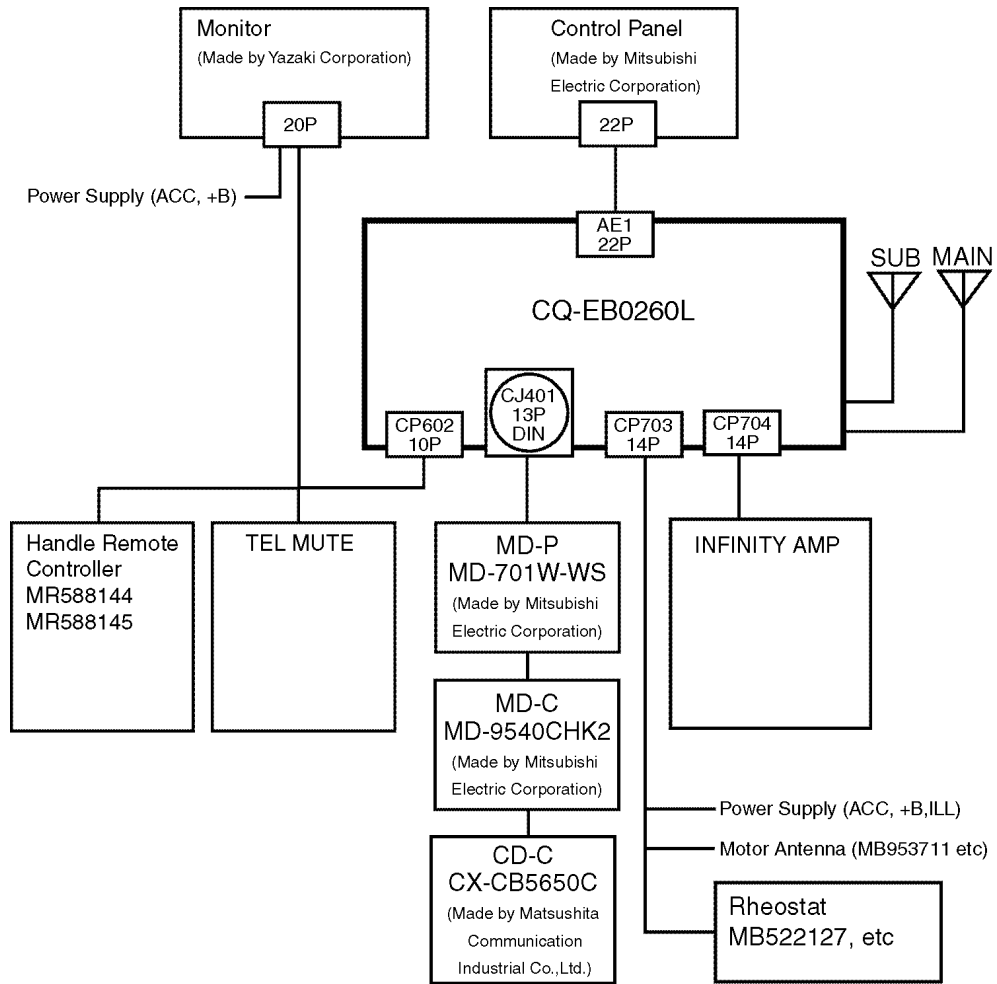
**Laser products :**

Wave length	780nm
Laser power	No hazardous radiation is emitted with safety protection.

**Caution**

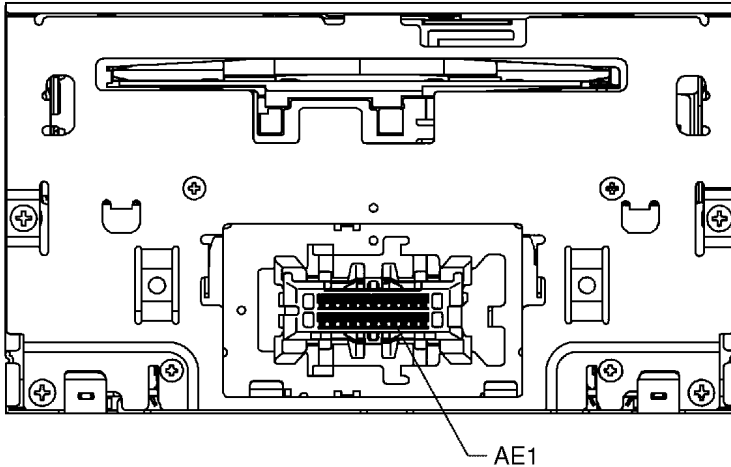
This product utilizes a laser. Use of controls or adjustments or performance of procedures other than those specified herein may result in hazardous radiation exposure.

### 3 SYSTEM BLOCK DIAGRAM

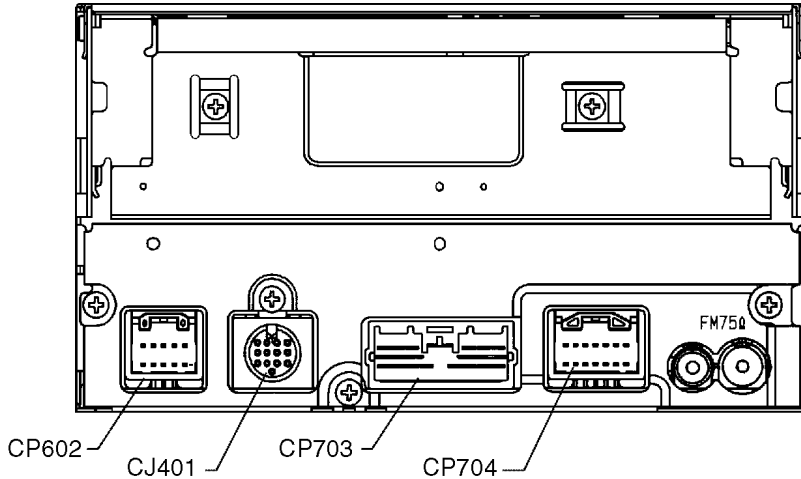


# 4 FRONT AND REAR VIEW

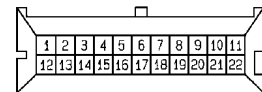
## FRONT VIEW



## REAR VIEW

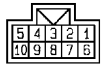


AE1 22P CONNECTOR



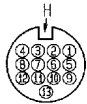
1. Latch (LED)
2. Clock (LED)
3. NC
4. Audio-SW
5. VOL-2
6. VOL-1
7. Eject-SW
8. Power-SW
9. AD 2
10. AD 1
11. GND
12. Enable (LED)
13. Data (LED)
14. Lamp GND
15. Lamp GND
16. NC
17. Lamp (+B)
18. Lamp (+B)
19. NC
20. VDD (5V)
21. TUNE 2
22. TUNE 1

CP602 10P CONNECTOR



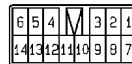
1. Remocon In
2. NC
3. NC
4. M-SCK
5. M-Data
6. Remocon Out
7. Telephone Mute
8. NC
9. M-Busy
10. Shield GND(M-BUS)

CJ401 13P CONNECTOR



1. SIG-GND
2. Lch
3. NC
4. Rch
5. NC
6. NC
7. Accessory (+)
8. NC
9. Battery (+)
10. Ill Level
11. M-Busy
12. M-SCK
13. M-Data
- H. Shield GND

CP703 14P CONNECTOR



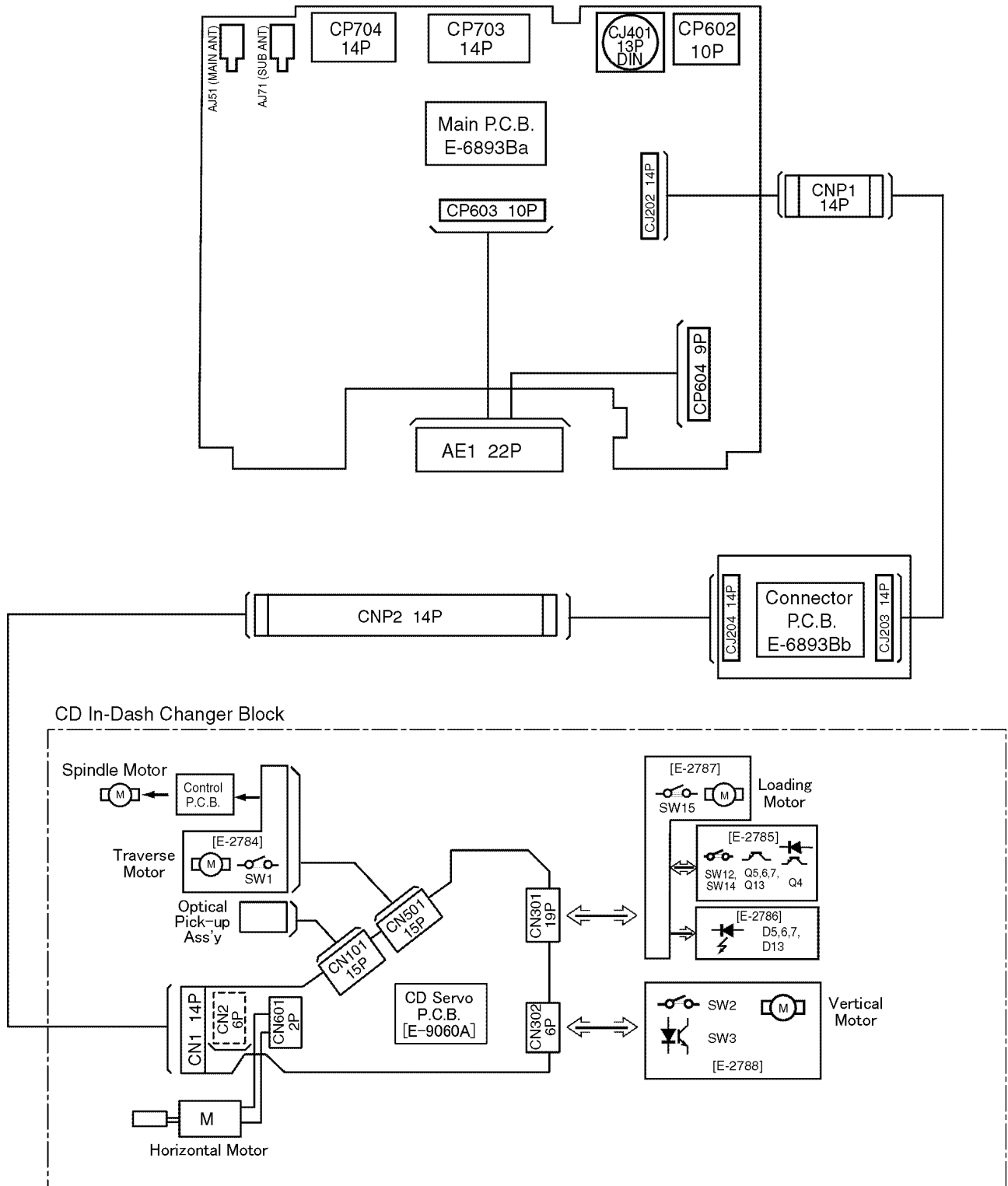
1. NC
2. NC
3. Illumination (+)
4. Antenna (+B)
5. NC
6. NC
7. NC
8. NC
9. Illumination (-)
10. Battery (+)
11. Accessory (+)
12. NC
13. NC
14. NC

CP704 14P CONNECTOR



1. Signal FL (+)
2. Signal FL (-)
3. Shield GND
4. Signal FR (+)
5. Signal FR (-)
6. Shield GND
7. Power ON
8. Signal RL (+)
9. Signal RL (-)
10. NC
11. Signal RR (+)
12. Signal RR (-)
13. NC
14. NC

# 5 WIRING CONNECTIONS

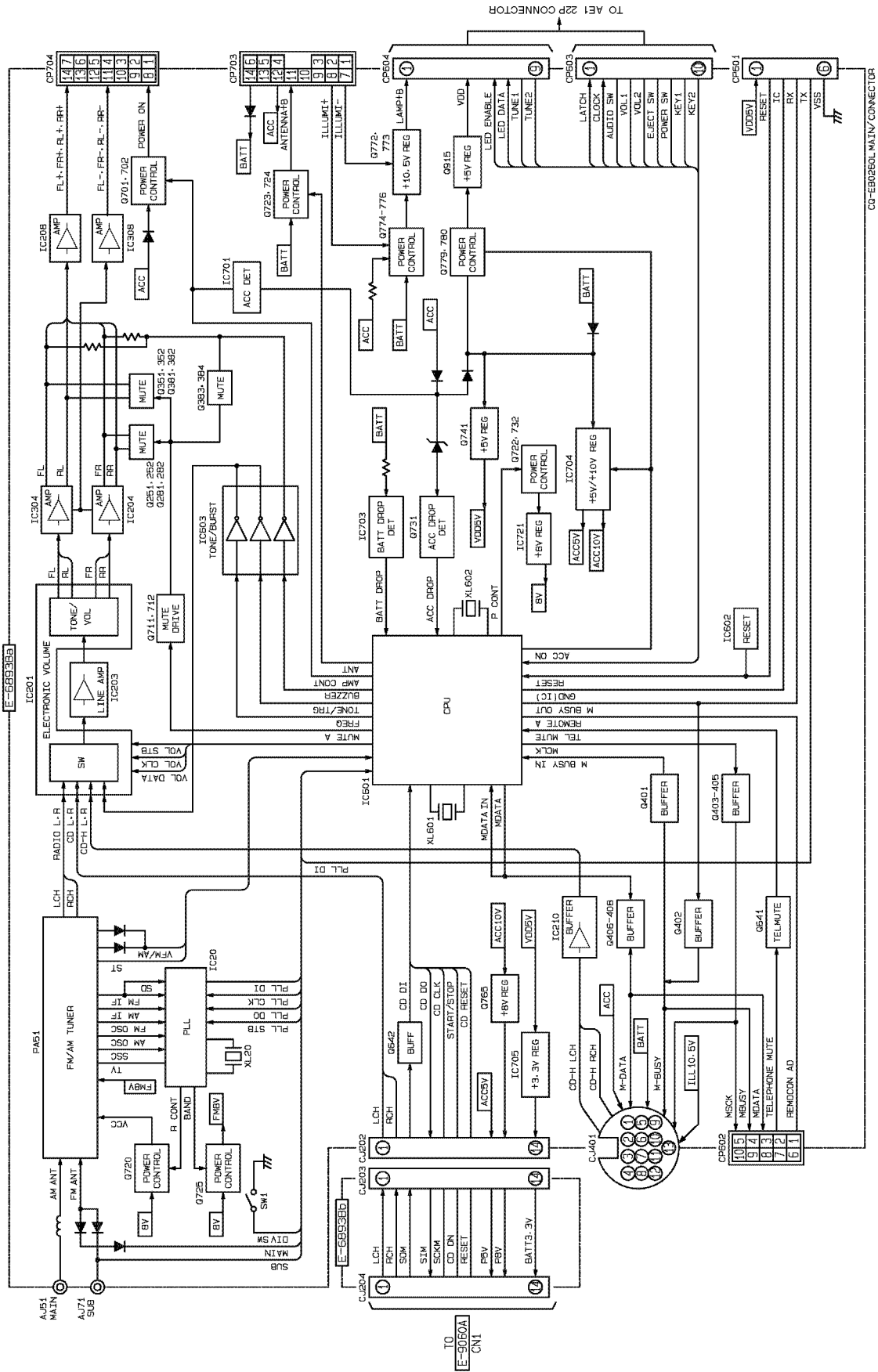


<Note> :

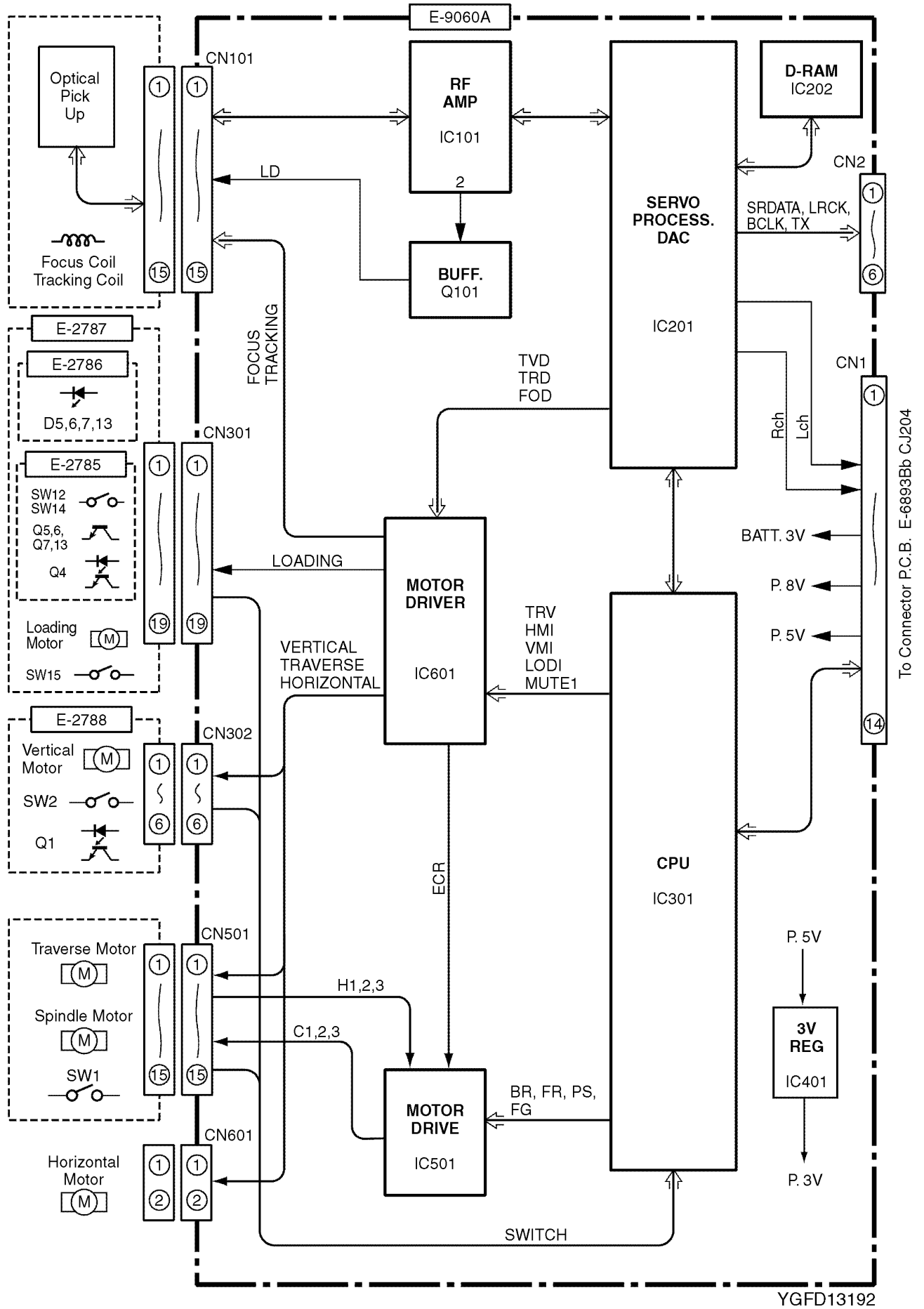
- .....This mark shows a Ref. No. of connector
- .....This mark shows a mounting position of connector.

# 6 BLOCK DIAGRAM

## 6.1. Main Block



## 6.2. CD Servo Block



YGFD13192

# 7 TERMINALS DESCRIPTION

## 7.1. CD Servo Block

### IC201 : MN662785TBUC

Pin No.	Port	Descriptions	I/O	Vol (V)
1	DVDD3	+5V power supply	-	3.6
2	D0	D-RAM data	I/O	2.0
3	D1	D-RAM data	I/O	2.0
4	NWE	D-RAM data write	O	3.0
5	NRAS	D-RAM row address strobe	O	3.2
6	D2	D-RAM data	I/O	2.1
7	D3	D-RAM data	I/O	1.9
8	NCAS0	D-RAM column address strobe	O	2.8
9	NCAS1	D-RAM column address strobe	O	1.4
10	A8	D-RAM address	O	1.0
11-14	A7-4	D-RAM address	O	1.1
15	A9	D-RAM address	O	1.1
16-18	A0-A2	D-RAM address	O	1.1
19	A3	D-RAM address	O	1.1
20	DVSS2	Ground	-	0
21	DVDD2	+5V power supply	-	3.6
22	SPOUT	Not used	-	1.5
23	TRVP	Traverse motor control	O	1.9
24	TRVM	Traverse motor control	O	1.9
25	TRP	Tracking coil drive	O	1.9
26	TRM	Tracking coil drive	O	1.9
27	FDP	Focus coil drive	O	2.0
28	FDM	Focus coil drive	O	2.0
29	FBAL	Focus balance	O	1.9
30	TBAL	Tracking balance	O	1.9
31	CSEL	(Connecting to VDD)	-	3.6
32	FE	Focus error	I	2.0
33	TE	Tracking error	I	1.9
34	RFENV	RF envelope	I	1.9
35	OFT	Off track signal	I	0
36	NRFDET	RF detecting signal	I	0
37	BDO	Drop-out signal	I	0
38	LDON	Laser on signal	O	3.6
39	ARF	RF signal	I	1.9
40	IREF	Reference current input	I	1.2
41	ADPVCC	(Connecting to ground)	-	0
42	DSLFL	Loop filter for DSL	-	2.0
43	DRFL	Loop filter for DSL	-	2.2
44	PLLFL	Loop filter for PLL	-	1.3
45	VCOF	VCO filter	-	1.3
46	AVDD2	+5V power supply	-	3.6
47	AVSS2	Ground	-	0
48	OUTL	L channel output	O	1.8
49	AVSS1	Ground	-	0
50	OUTR	R channel output	O	1.8
51	AVDD1	+5V power supply	-	3.5
52	FSEL	(Connecting to P3V)	-	3.7
53,54	-	(Connecting to ground)	-	0
55	FLAG	Flag output	O	0
56	CLVS	Servo status signal	O	3.6
57-60	-	Not used	-	-
61	MCLK	Clock for I/F command	I	2.4
62	MDATA	Date for I/F command	I	1.9
63	MLD	I/F command load	I	3.5
64	BLKCK	Subcode block clock	O	0
65	SQCK	Ext.clock for sub code-Q	I	3.5
66	SUBQ	Code for sub. code-Q	O	1.1
67	DMUTE	Mute input	I	0
68	STAT	Status signal	O	1.1
69	NRST	Reset input	I	3.6
70	SPPOL	Not used	-	-
71	PMCK	Clock output	O	2.0
72	SMCK	Clock output	O	1.9
73	SDATA	Serial data	O	0
74	LRCK	LR clock	O	0
75	BCLK	Bit clock	O	0
76	/TEST	(Connecting to VDD)	-	1.5

Pin No.	Port	Descriptions	I/O	Vol (V)
77	X1	Crystal oscillator	-	1.8
78	X2	Crystal oscillator	-	1.8
79	DVDD1	+5V power supply	-	3.6
80	DVSS1	Ground	-	0

### IC301 : C2BBGF000364

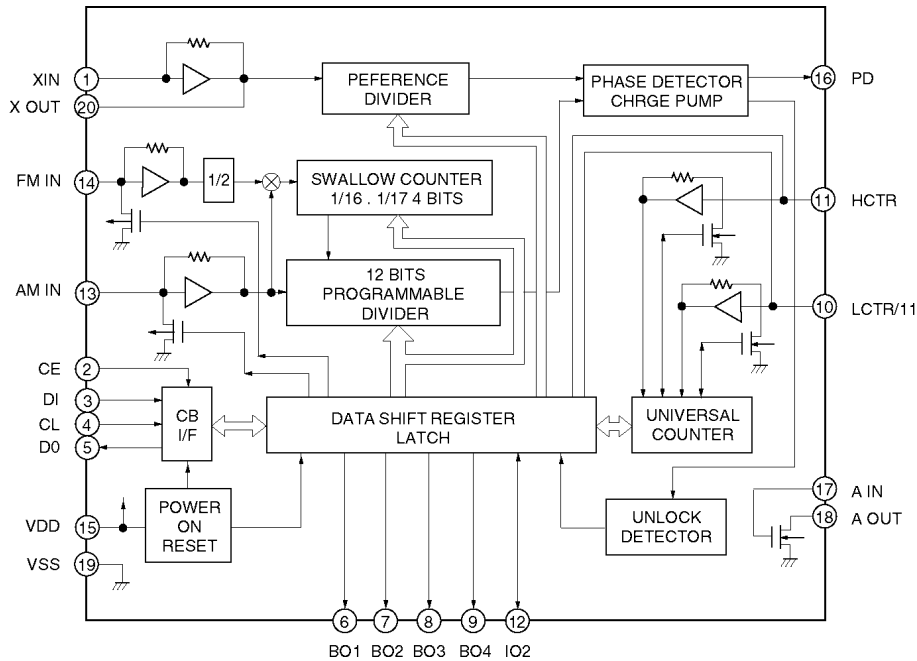
Pin No.	Port	Descriptions	I/O	Vol (V)
1	PS	Motor power save	O	3.5
2	BR	Brake mode selection	O	0
3	GCTL	Motor G-control	O	1.6
4	SPCCTL	Motor speed control	O	3.5
5	-	Not used	-	-
6	MCLK	Clock for I/F command	O	2.9
7	MDATA	Data for I/F command	O	1.9
8	MLD	I/F command load	O	3.5
9	VSS0	Ground	-	0
10	VDD0	+3V power supply	-	3.5
11	STAT	Status signal	I	1.2
12	FLOCK	Focus servo lock	O	0
13	TLOCK	Tracking servo lock	O	0
14	SENS	Servo status	O	0
15	SIM	CD changerserial data	I	3.1
16	SOM	CD changerserial data	O	2.2
17	SCKM	Serial data shift clock	I	3.2
18	SUBQ	Code for sub. code-Q	I	1.7
19	-	Not used	-	-
20	SQCK	Ext. clock for sub. code-Q	O	3.6
21	NRST	Reset output	O	3.6
22	DMUTE	Mute output	O	0
23	MUTE	Mute output	O	0
24	VDD1	+3V power supply	-	3.5
25	AVSS1	Ground	-	0
26	SW15	Feeder SW	I	3.6
27	SW3	Tray H SW	I	3.5
28	SW4	Disc push SW	I	0.5
29	SW5	Disc SW	I	0
30	SW6	Disc load SW	I	0
31	SW7	Eject SW	I	0
32	SW13	Eject2 SW	I	0
33	CLVS	Servo status	O	3.6
34	AVREF	+3V power supply	-	3.6
35	-	Not used	-	-
36	/RESET	Reset	I	3.6
37	XT2	Not used	-	-
38	XT1	(VDD pull-up)	-	3.6
39	IC(VPP)	(Connecting to ground)	-	0
40	X2	Crystal Osillator	-	2.1
41	X1	Crystal Osillator	-	1.8
42	VSS1	Ground	-	0
43	CDON	CD changer start/stop	I	3.1
44	BLKCK	Sub. code block clock	I	0
45	FG	Flag signal	I	1.9
46	BD0	Drop-out signal	I	0
47	FR	Revolution detection	I	0
48	TRV	Forced traverse control	O	1.9
49	PWM	Not used	-	-
50	VMI+	Horizontal motor control	O	0
51	VMI-	Horizontal motor control	O	0
52	MUTE1	Mute output	O	3.6
53	LODI+	Loading motor control	O	0
54	LODI-	Loading motor control	O	0
55	HMI+	Vertical motor control	O	0
56	HMI-	Vertical motor control	O	0
57	SW1	Inner SW	I	3.6
58	SW2	TrayG SW	I	0
59	SW8	Play SW	I	0
60	SW9	Clump SW	I	3.6



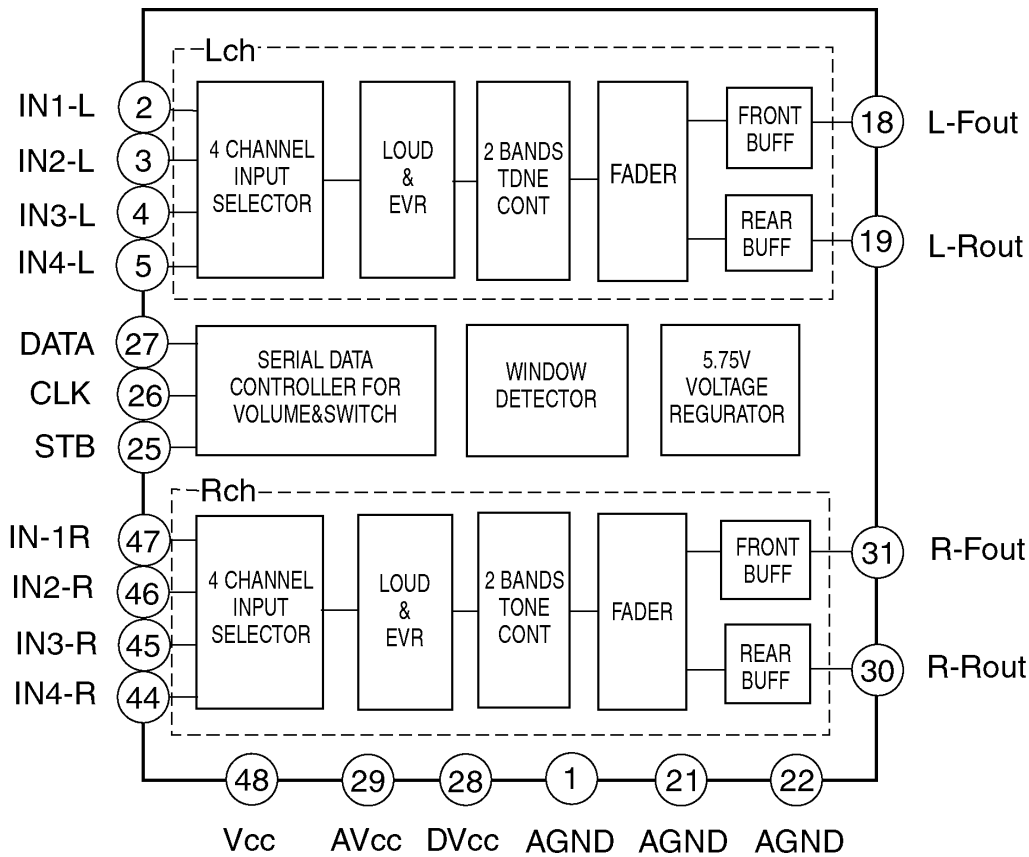
Pin No.	Port	Descriptions	I/O	Vol (V)
61	SW10	Shuter SW	I	3.6
62	SW11	Horizontal origin SW	I	3.6
63	SW12	Outer2 SW	I	3.7
64	SW14	Outer SW	I	3.6

# 8 PACKAGE AND IC BLOCK DIAGRAM

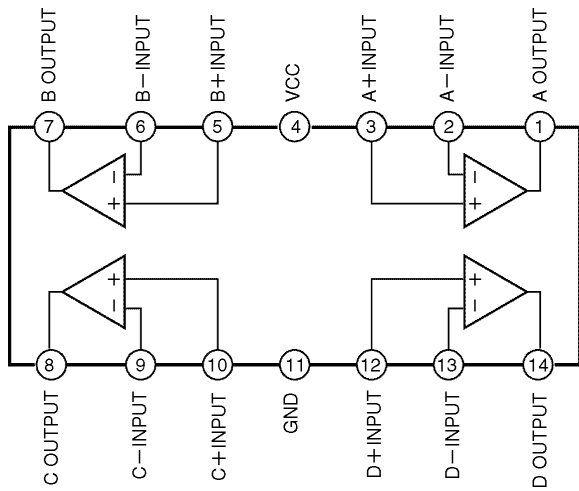
## 8.1. Main Block



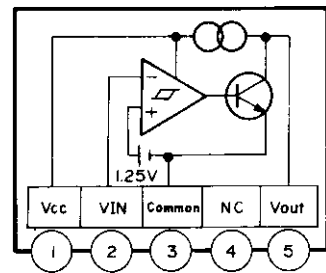
IC20 : YEAMLC72135C



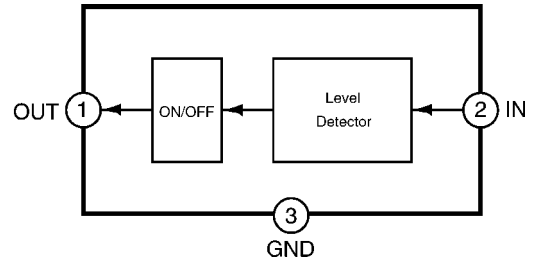
IC201 : YEAMSN761026



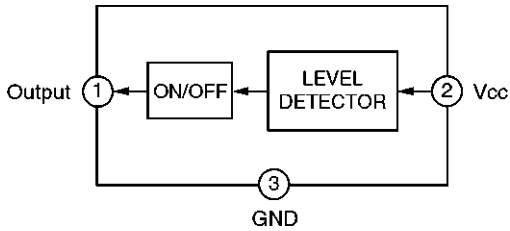
IC208,308 : C0ABC000015



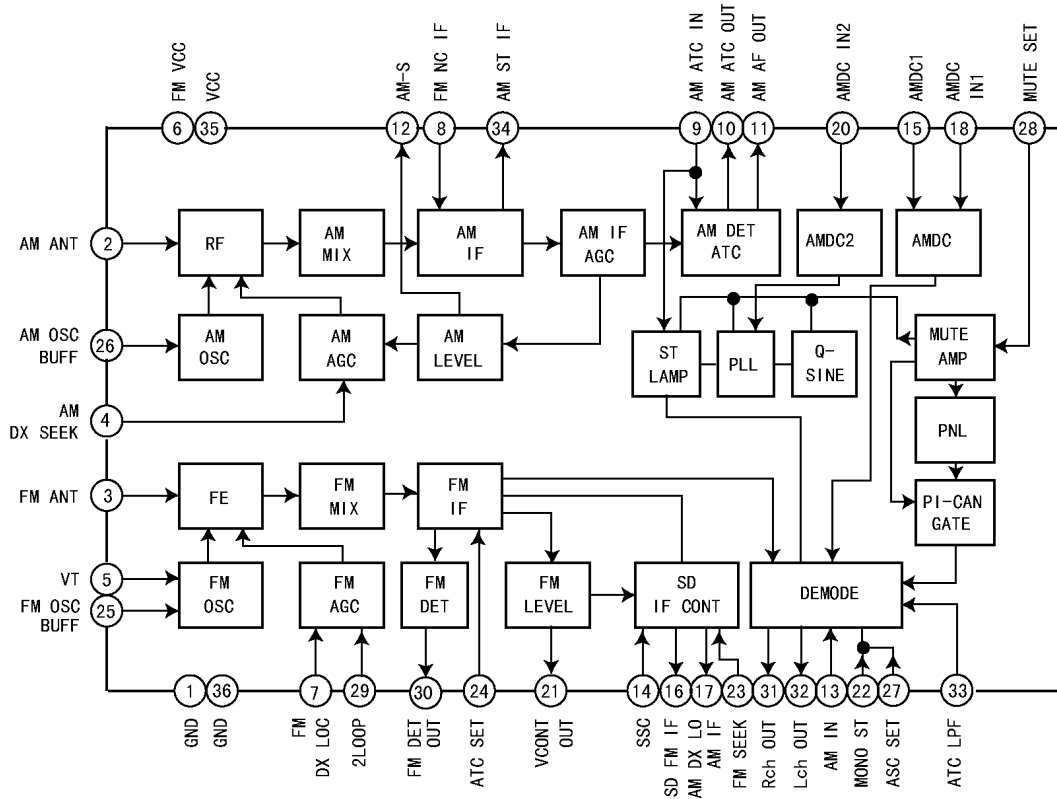
IC701 : YEAMM945BFT2



IC704 : YEAMA61W12ST

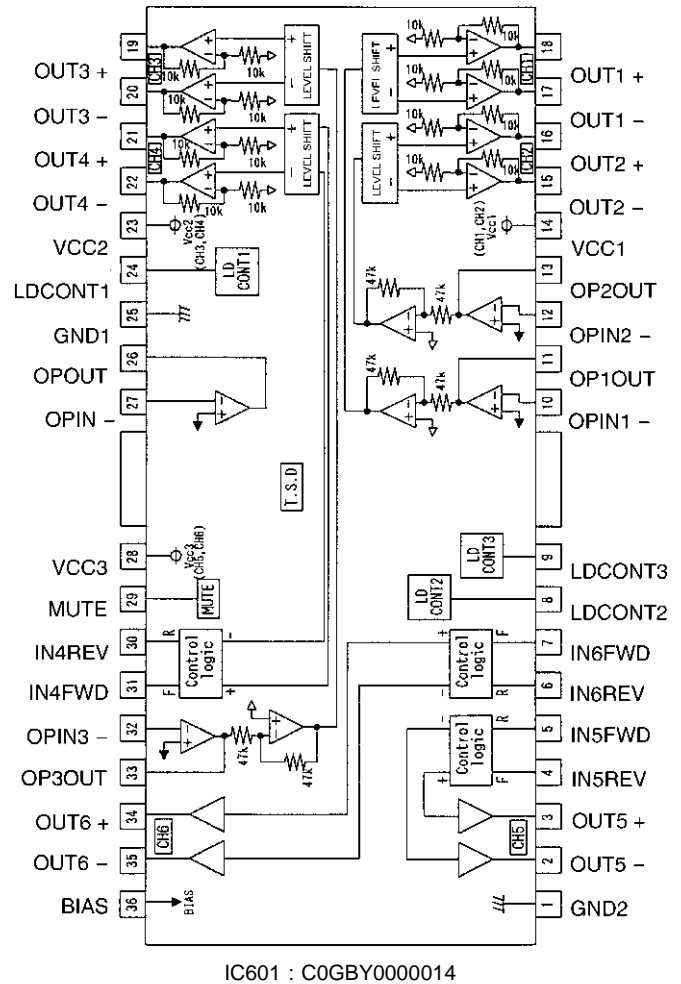
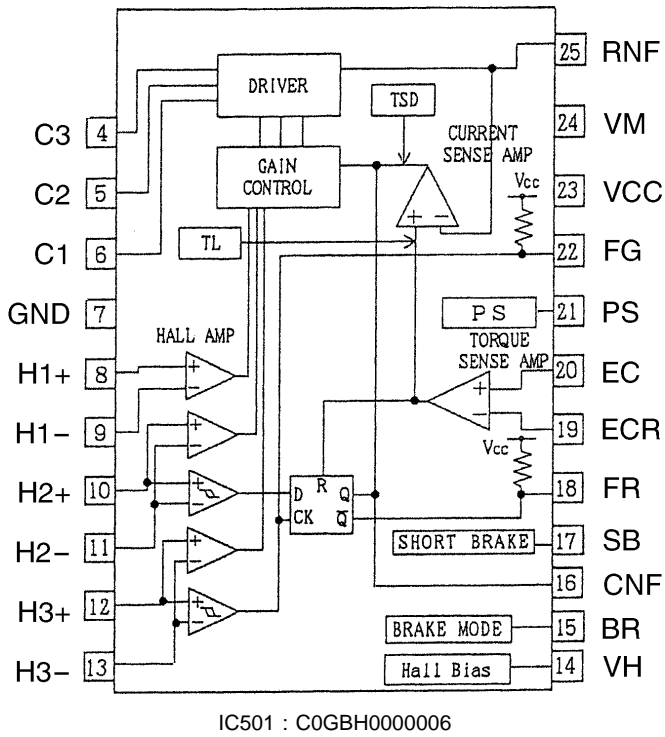
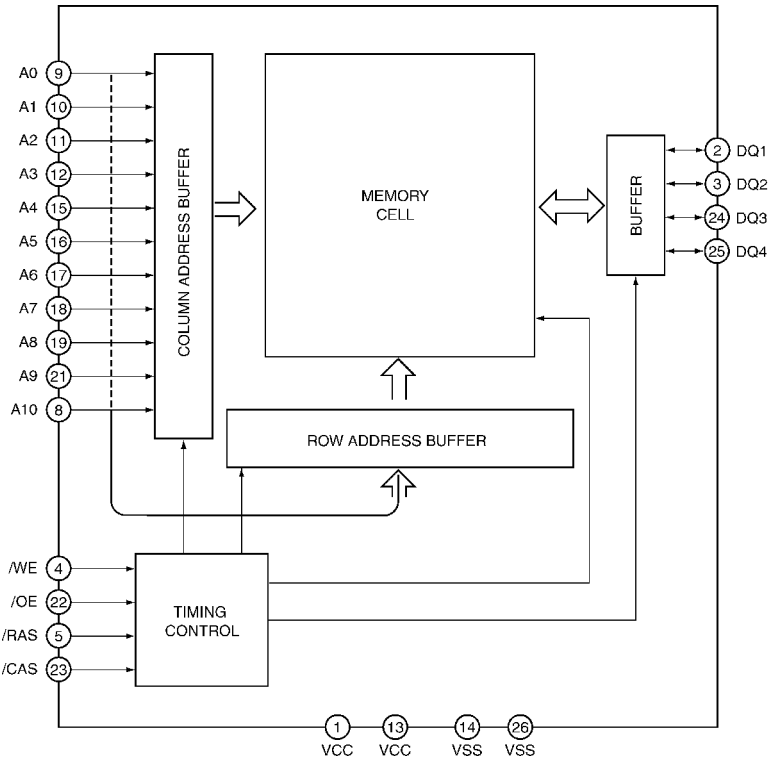


IC602 : MN1382KTX



PA51 : YEP0PTA514B0

## 8.2. CD Servo Block



# 9 REPLACEMENT PARTS LIST

Notes :

1. Be sure to make your orders of replacement parts according to this list.
2. Important safety notice: Components, identified by  $\Delta$  mark have special characteristics important for safety. When replacing any of these components, use only manufacturer's specified parts.
3. Location keys in the remarks column indicates the general location of the parts shown in the exploded drawing, as in a road map.
4. The marking (RTL) indicates that Retention Time is limited for this item. After the discontinuation of assembly in production, the item will continue to be available for a specific period of time. The retention period of availability is dependent on the type of assembly, and in accordance with the laws governing part and product retention. After the end of this period, the assembly will no longer be available.

Ref. No.	Part No.	Part Name & Description	Remarks
[E6893B] Main Block			
IC's and TRANSISTORS			
IC20	YEAMLC72135C	IC	
IC201	YEAMSN761026	IC	
IC203	C0ABBB000179	IC	
IC204	C0ABBB000179	IC	
IC208	C0ABCB000015	IC	
IC210	C0ABBB000179	IC	
IC304	C0ABBB000179	IC	
IC308	C0ABCB000015	IC	
IC601	C2BBGF000344	IC	
IC602	MN1382KTX	IC	
IC603	C0JBAM000048	IC	
IC701	YEAMM945BFT2	IC	
IC703	MN1382QTX	IC	
IC704	YEAMA61W12ST	IC	
IC705	C0DBFGD00001	IC	
PA51	YEP0PTA514B0	Electronic Tuner	
Q251	B1GBHBEA0004	Transistor	
Q252	YEANA114TK	Transistor	
Q281	B1GBHBEA0004	Transistor	
Q282	YEANA114TK	Transistor	
Q351	B1GBHBEA0004	Transistor	
Q352	YEANA114TK	Transistor	
Q381	B1GBHBEA0004	Transistor	
Q382	YEANA114TK	Transistor	
Q383	YEANC114YKX	Transistor	
Q384	YEANC114YKX	Transistor	
Q401	B1GDCFJN0004	Transistor	
Q402	B1GBCFGG0001	Transistor	
Q403	B1ABCF000044	Transistor	
Q404	B1ABCF000042	Transistor	
Q405	B1ABCF000044	Transistor	
Q406	B1ABCF000044	Transistor	
Q407	B1ABCF000042	Transistor	
Q408	B1ABCF000044	Transistor	
Q641	2SD0601AHR	Transistor	
Q642	B1CEGG000001	Transistor	
Q701	YEANC114YKX	Transistor	
Q702	B1GDCFLL0010	Transistor	
Q711	B1GDCFLL0010	Transistor	
Q712	YEANC114YKX	Transistor	
Q720	YEANB1F3PT	Transistor	
Q721	2SD245300L	Transistor	
Q722	2SB1398QTA	Transistor	
Q723	2SB1398QTA	Transistor	

Ref. No.	Part No.	Part Name & Description	Remarks
Q724	B1GDJEGJ0002	Transistor	
Q725	YEANB1F3PT	Transistor	
Q731	B1ABCF000044	Transistor	
Q732	YEANC114YKX	Transistor	
Q741	B1BBAC000007	Transistor	
Q765	B1BBCD000001	Transistor	
Q772	2SD0601AHR	Transistor	
Q773	YEAN2SD1856	Transistor	
Q774	B1BDCG000008	Transistor	
Q775	2SD0601AHR	Transistor	
Q776	2SD0601AHR	Transistor	
Q779	B1ACJC000004	Transistor	
Q780	YEANC114YKX	Transistor	
Q915	2SD245300L	Transistor	
DIODES			
D51	MA551TX	Diode	
D71	MA551TX	Diode	
D250	MA153TX	Diode	
D251	MA153TX	Diode	
D252	MA153TX	Diode	
D280	MA153TX	Diode	
D350	MA153TX	Diode	
D351	MA153TX	Diode	
D352	MA153TX	Diode	
D380	MA153TX	Diode	
D401	MA152WKTIX	Diode	
D402	MAZ32700ML	Diode	
D403	MAZ32700ML	Diode	
D404	MAZ32700ML	Diode	
D549	MAZ32700ML	Diode	
D550	MA153TX	Diode	
D601	B0ACCK000005	Diode	
D602	B0ACCK000005	Diode	
D610	MA152WKTIX	Diode	
D621	MA741TX	Diode	
D631	MA153TX	Diode	
D632	MA153TX	Diode	
D643	MA158TX	Diode	
D701	B0JCPD000002	Diode	
D710	B0BA03300012	Diode	
D711	YEADRD91M1T2	Diode	
D712	MA3X152K0L	Diode	
D731	YEADRD75M2T1	Diode	
D732	MA741TX	Diode	
D733	B0BC5R700005	Diode	
D750	B0BC8R700005	Diode	
D771	YEADDSA3A2B	Diode	
D772	YEADSR1544TL	Diode	
D773	B0BC01100025	Diode	
D774	YEADSR1544TL	Diode	
D775	YEADSR1544TL	Diode	
D776	YEADSR1544TL	Diode	
D777	MA3X152A0L	Diode	
D780	MA3X152K0L	Diode	
D911	B0BC5R700005	Diode	
CAPACITORS			
C25	YECUS1H220JM	Ceramic, 22PF 50WV	
C26	YECUS1H150JM	Ceramic, 15PF 50WV	
C51	FlH1H120A231	Ceramic, 12PF 50WV	
C53	ECA1AM221I	Electrolytic, 220µF 10WV	
C54	YECUS1H103KX	Ceramic, 0.01µF 50WV	
C55	YECUS1E223KX	Ceramic, 0.022µF 25WV	
C56	YECUS1E223KX	Ceramic, 0.022µF 25WV	
C58	YECUZ1H102KX	Ceramic, 1000PF 50WV	
C59	YECUS1H102KX	Ceramic, 1000PF 50WV	
C60	YECUZ1H103KX	Ceramic, 0.01µF 50WV	
C71	YECUZ1H221JC	Ceramic, 220PF 50WV	
C101	YECUS1C154KX	Ceramic, 0.15µF 16WV	
C102	YECUS1H153KX	Ceramic, 0.015µF 50WV	

Ref. No.	Part No.	Part Name & Description	Remarks
C103	YECUS1C154KX	Ceramic, 0.15µF 16WV	
C106	YECUS1H101JM	Ceramic, 100PF 50WV	
C107	YECUS1H272KX	Ceramic, 2700PF 50WV	
C162	YECUZ1H103KX	Ceramic, 0.01µF 50WV	
C163	YECUZ1H103KX	Ceramic, 0.01µF 50WV	
C166	YECUS1H103KX	Ceramic, 0.01µF 50WV	
C201	ECA1AM221I	Electrolytic, 220µF 10WV	
C202	ECA1HM2R2I	Electrolytic, 2.2µF 50WV	
C203	ECA1HM2R2I	Electrolytic, 2.2µF 50WV	
C204	YECUZ1H390JC	Ceramic, 39PF 50WV	
C205	ECA1HM4R7B	Electrolytic, 4.7µF 50WV	
C206	YECUS1H390JM	Ceramic, 39PF 50WV	
C207	YECUZ1H221JC	Ceramic, 220PF 50WV	
C208	YECUZ1H221JC	Ceramic, 220PF 50WV	
C209	FLJ1H393A395	Ceramic, 0.039µF 50WV	
C210	ECA1HM010I	Electrolytic, 1µF 50WV	
C212	ECEA1ASN100I	Electrolytic, 10µF 10WV	
C213	YECUS1E223KX	Ceramic, 0.022µF 25WV	
C214	ECA1HM4R7B	Electrolytic, 4.7µF 50WV	
C215	ECA1HM4R7B	Electrolytic, 4.7µF 50WV	
C216	YECUS1H152KX	Ceramic, 1500PF 50WV	
C217	YECUS1H682KX	Ceramic, 6800PF 50WV	
C218	YECUS1H821JM	Ceramic, 820PF 50WV	
C219	ECEA1ASN100I	Electrolytic, 10µF 10WV	
C220	YECUS1C683KX	Ceramic, 0.068µF 16WV	
C221	ECEA1VSN2R2	Electrolytic, 2.2µF 35WV	
C222	YECUS1H101JM	Ceramic, 100PF 50WV	
C223	ECEA1ASN100I	Electrolytic, 10µF 10WV	
C224	ECEA1HKS2R2I	Electrolytic, 2.2µF 50WV	
C230	YECUS1C104KX	Ceramic, 0.1µF 16WV	
C231	YECUS1C104KX	Ceramic, 0.1µF 16WV	
C250	ECA1HM2R2I	Electrolytic, 2.2µF 50WV	
C251	FLH1H180A231	Ceramic, 18PF 50WV	
C253	FLH1H180A231	Ceramic, 18PF 50WV	
C254	ECA1HM2R2I	Electrolytic, 2.2µF 50WV	
C255	FLH1H101A231	Ceramic, 100PF 50WV	
C256	ECA1HM4R7B	Electrolytic, 4.7µF 50WV	
C257	ECA1HM4R7B	Electrolytic, 4.7µF 50WV	
C258	ECA1HM4R7B	Electrolytic, 4.7µF 50WV	
C260	YECUS1C104KX	Ceramic, 0.1µF 16WV	
C261	YECUS1C104KX	Ceramic, 0.1µF 16WV	
C262	YECUS1H102KX	Ceramic, 1000PF 50WV	
C263	YECUS1H102KX	Ceramic, 1000PF 50WV	
C264	YECUS1H102KX	Ceramic, 1000PF 50WV	
C265	YECUS1H102KX	Ceramic, 1000PF 50WV	
C280	ECA1HM2R2I	Electrolytic, 2.2µF 50WV	
C284	ECA1HM2R2I	Electrolytic, 2.2µF 50WV	
C285	FLH1H101A231	Ceramic, 100PF 50WV	
C286	ECA1HM4R7B	Electrolytic, 4.7µF 50WV	
C302	ECA1HM2R2I	Electrolytic, 2.2µF 50WV	
C303	ECA1HM2R2I	Electrolytic, 2.2µF 50WV	
C304	YECUZ1H390JC	Ceramic, 39PF 50WV	
C305	ECA1HM4R7B	Electrolytic, 4.7µF 50WV	
C306	YECUS1H390JM	Ceramic, 39PF 50WV	
C307	YECUZ1H221JC	Ceramic, 220PF 50WV	
C308	YECUZ1H221JC	Ceramic, 220PF 50WV	
C309	FLJ1H393A395	Ceramic, 0.039µF 50WV	
C310	ECA1HM010I	Electrolytic, 1µF 50WV	
C312	ECEA1ASN100I	Electrolytic, 10µF 10WV	
C313	YECUS1E223KX	Ceramic, 0.022µF 25WV	
C314	ECA1HM4R7B	Electrolytic, 4.7µF 50WV	
C315	ECA1HM4R7B	Electrolytic, 4.7µF 50WV	
C316	YECUS1H152KX	Ceramic, 1500PF 50WV	
C317	YECUS1H682KX	Ceramic, 6800PF 50WV	
C318	YECUS1H821JM	Ceramic, 820PF 50WV	
C319	ECEA1ASN100I	Electrolytic, 10µF 10WV	
C320	YECUS1C683KX	Ceramic, 0.068µF 16WV	
C321	ECEA1VSN2R2	Electrolytic, 2.2µF 35WV	
C322	YECUS1H101JM	Ceramic, 100PF 50WV	
C323	ECEA1ASN100I	Electrolytic, 10µF 10WV	
C324	ECEA1HKS2R2I	Electrolytic, 2.2µF 50WV	
C330	YECUS1C104KX	Ceramic, 0.1µF 16WV	
C331	YECUS1C104KX	Ceramic, 0.1µF 16WV	

Ref. No.	Part No.	Part Name & Description	Remarks
C350	ECA1HM2R2I	Electrolytic, 2.2µF 50WV	
C351	FLH1H180A231	Ceramic, 18PF 50WV	
C353	FLH1H180A231	Ceramic, 18PF 50WV	
C354	ECA1HM2R2I	Electrolytic, 2.2µF 50WV	
C355	FLH1H101A231	Ceramic, 100PF 50WV	
C356	ECA1HM4R7B	Electrolytic, 4.7µF 50WV	
C357	ECA1HM4R7B	Electrolytic, 4.7µF 50WV	
C358	ECA1HM4R7B	Electrolytic, 4.7µF 50WV	
C360	YECUS1C104KX	Ceramic, 0.1µF 16WV	
C361	YECUS1C104KX	Ceramic, 0.1µF 16WV	
C362	YECUS1H102KX	Ceramic, 1000PF 50WV	
C363	YECUS1H102KX	Ceramic, 1000PF 50WV	
C364	YECUS1H102KX	Ceramic, 1000PF 50WV	
C365	YECUS1H102KX	Ceramic, 1000PF 50WV	
C380	ECA1HM2R2I	Electrolytic, 2.2µF 50WV	
C384	ECA1HM2R2I	Electrolytic, 2.2µF 50WV	
C385	FLH1H101A231	Ceramic, 100PF 50WV	
C386	ECA1HM4R7B	Electrolytic, 4.7µF 50WV	
C401	FLH1H100A226	Ceramic, 10PF 50WV	
C402	FLH1H100A226	Ceramic, 10PF 50WV	
C500	ECA1CM100I	Electrolytic, 10µF 16WV	
C502	YECUS1H151JM	Ceramic, 150PF 50WV	
C503	YECUS1H471JM	Ceramic, 470PF 50WV	
C504	YECUS1H153KX	Ceramic, 0.015µF 50WV	
C505	YECUS1H153KX	Ceramic, 0.015µF 50WV	
C506	YECUS1H103KX	Ceramic, 0.01µF 50WV	
C507	YECUS1H153KX	Ceramic, 0.015µF 50WV	
C508	YECUS1H153KX	Ceramic, 0.015µF 50WV	
C600	YECUS1H103KX	Ceramic, 0.01µF 50WV	
C601	YECUZ1H103KX	Ceramic, 0.01µF 50WV	
C602	YECUS1C104KX	Ceramic, 0.1µF 16WV	
C603	ECA0JM331I	Electrolytic, 330µF 6.3WV	
C605	YECUS1C104KX	Ceramic, 0.1µF 16WV	
C606	ECEA0JKS101I	Electrolytic, 100µF 6.3WV	
C607	ECEA1ESN4R7	Electrolytic, 4.7µF 25WV	
C608	YECUS1H103KX	Ceramic, 0.01µF 50WV	
C609	YECUZ1C104KX	Ceramic, 0.1µF 16WV	
C610	YECUZ1H472KX	Ceramic, 4700PF 50WV	
C611	YECUZ1H103KX	Ceramic, 0.01µF 50WV	
C612	FLH1H821A190	Ceramic, 820PF 50WV	
C613	ECA1AM221I	Electrolytic, 220µF 10WV	
C614	YECUS1C224KX	Ceramic, 0.22µF 16WV	
C615	EES0HD473H	Electrolytic, 0.047F 5.5WV	
C616	YECUS1C104KX	Ceramic, 0.1µF 16WV	
C620	YECUZ1H220JC	Ceramic, 22PF 50WV	
C621	YECUZ1H220JC	Ceramic, 22PF 50WV	
C622	YECUS1H390JM	Ceramic, 39PF 50WV	
C623	YECUS1H220JM	Ceramic, 22PF 50WV	
C627	YECUS1C104KX	Ceramic, 0.1µF 16WV	
C628	FLJ2A101A003	Ceramic, 100PF 100WV	
C629	FLJ2A101A003	Ceramic, 100PF 100WV	
C630	FLJ2A101A003	Ceramic, 100PF 100WV	
C631	FLJ2A101A003	Ceramic, 100PF 100WV	
C632	FLJ2A101A003	Ceramic, 100PF 100WV	
C633	FLJ2A101A003	Ceramic, 100PF 100WV	
C634	FLJ2A101A003	Ceramic, 100PF 100WV	
C635	FLJ2A101A003	Ceramic, 100PF 100WV	
C636	FLJ2A101A003	Ceramic, 100PF 100WV	
C637	FLJ2A101A003	Ceramic, 100PF 100WV	
C638	FLJ2A101A003	Ceramic, 100PF 100WV	
C640	YECUZ1H103KX	Ceramic, 0.01µF 50WV	
C641	YECUZ1H103KX	Ceramic, 0.01µF 50WV	
C642	ECEA1CKS100I	Electrolytic, 10µF 16WV	
C643	ECAF1A820H	Electrolytic, 82µF 10WV	
C701	ECA1HM3R3I	Electrolytic, 3.3µF 50WV	
C702	YECUS1H103KX	Ceramic, 0.01µF 50WV	
C703	YECUZ1C104KX	Ceramic, 0.1µF 16WV	
C707	YECUS1H472KX	Ceramic, 4700PF 50WV	
C711	ECA1AM101I	Electrolytic, 100µF 10WV	
C715	ECA1CM100I	Electrolytic, 10µF 16WV	
C716	YECUS1E473KX	Ceramic, 0.047µF 25WV	
C718	ECA1AM221I	Electrolytic, 220µF 10WV	
C720	YECUS1H103KX	Ceramic, 0.01µF 50WV	

Ref. No.	Part No.	Part Name & Description	Remarks
C723	ECA0JM331I	Electrolytic, 330μF 6.3WV	
C725	ECA1HM2R2I	Electrolytic, 2.2μF 50WV	
C726	YECUS1C105ZF	Ceramic, 1μF 16WV	
C727	ECA1AM101I	Electrolytic, 100μF 10WV	
C728	ECA1AM101I	Electrolytic, 100μF 10WV	
C731	ECA1HM2R2I	Electrolytic, 2.2μF 50WV	
C734	ECA1CM220I	Electrolytic, 22μF 16WV	
C735	YECUS1C224KX	Ceramic, 0.22μF 16WV	
C741	ECA1HM2R2I	Electrolytic, 2.2μF 50WV	
C742	YECUS1H103KX	Ceramic, 0.01μF 50WV	
C744	ECA1HM4R7B	Electrolytic, 4.7μF 50WV	
C747	EEAFCLA820H	Electrolytic, 82μF 10WV	
C751	ECA1AM221I	Electrolytic, 220μF 10WV	
C752	YECUS1E223KX	Ceramic, 0.022μF 25WV	
C754	YECUZ1C104KX	Ceramic, 0.1μF 16WV	
C758	ECA0JM101I	Electrolytic, 100μF 6.3WV	
C759	YECUZ1H103KX	Ceramic, 0.01μF 50WV	
C760	ECEALCPU222L	Electrolytic, 2200μF 16WV	
C761	YECUS1H101JM	Ceramic, 100PF 50WV	
C764	YECUS1H103KX	Ceramic, 0.01μF 50WV	
C765	F1H1H220A487	Ceramic, 22PF 50WV	
C766	F1H1H220A487	Ceramic, 22PF 50WV	
C767	F1H1H101A231	Ceramic, 100PF 50WV	
C768	F1H1H220A487	Ceramic, 22PF 50WV	
C769	F1H1H220A487	Ceramic, 22PF 50WV	
C770	F1H1H101A231	Ceramic, 100PF 50WV	
C782	ECA1AM221I	Electrolytic, 220μF 10WV	
C783	YECUZ1H103KX	Ceramic, 0.01μF 50WV	
C784	YECUS1C224KX	Ceramic, 0.22μF 16WV	
C785	ECA1CM220I	Electrolytic, 22μF 16WV	
C786	YECUS1C334KX	Ceramic, 0.33μF 16WV	
C787	YECUS1C334KX	Ceramic, 0.33μF 16WV	
C788	YECUS1C224KX	Ceramic, 0.22μF 16WV	
C790	EEAFCLA820H	Electrolytic, 82μF 10WV	
C792	YECUS1H103KX	Ceramic, 0.01μF 50WV	
C793	ECA1CM221	Electrolytic, 220μF 16WV	
C794	ECA1CM471B	Electrolytic, 470μF 16WV	
C796	YECUV2A103KX	Ceramic, 0.01μF 100WV	
C797	ECA1HM100I	Electrolytic, 10μF 50WV	
C798	YECUV2A103KX	Ceramic, 0.01μF 100WV	
C801	F1H1H470A231	Ceramic, 47PF 50WV	
C802	F1H1H470A231	Ceramic, 47PF 50WV	
C803	F1H1H470A231	Ceramic, 47PF 50WV	
C804	F1H1H470A231	Ceramic, 47PF 50WV	
C809	F1H1H470A231	Ceramic, 47PF 50WV	
C810	F1H1H470A231	Ceramic, 47PF 50WV	
C811	F1H1H470A231	Ceramic, 47PF 50WV	
C812	F1H1H470A231	Ceramic, 47PF 50WV	
C813	YECUS1H101JM	Ceramic, 100PF 50WV	
C814	FLJ2A101A003	Ceramic, 100PF 100WV	
C815	FLJ2A101A003	Ceramic, 100PF 100WV	
C911	YECUS1H103KX	Ceramic, 0.01μF 50WV	
C912	ECA1HM2R2I	Electrolytic, 2.2μF 50WV	
C913	ECA1CM220I	Electrolytic, 22μF 16WV	
RESISTORS			
R34	ERJ6GEYJ473	Chip, 47kΩ 1/10W	
R35	ERJ6GEYJ103	Chip, 10kΩ 1/10W	
R55	ERJ6GEYJ103	Chip, 10kΩ 1/10W	
R56	ERJ6GEYJ563	Chip, 56kΩ 1/10W	
R57	ERJ3GEYJ101V	Chip, 100Ω 1/16W	
R58	ERJ6GEYJ272	Chip, 2.7kΩ 1/10W	
R59	ERJ6GEYJ562	Chip, 5.6kΩ 1/10W	
R101	ERJ6GEYJ472	Chip, 4.7kΩ 1/10W	
R102	ERJ6GEYJ153	Chip, 15kΩ 1/10W	
R104	ERJ6GEYJ153	Chip, 15kΩ 1/10W	
R105	ERJ6GEYJ101	Chip, 100Ω 1/10W	
R161	ERJ3GEYJ102V	Chip, 1kΩ 1/16W	
R162	ERJ3GEYJ102V	Chip, 1kΩ 1/16W	
R164	ERJ3GEYJ473V	Chip, 47kΩ 1/16W	
R165	ERJ3GEYJ473V	Chip, 47kΩ 1/16W	
R166	ERJ3GEYJ102V	Chip, 1kΩ 1/16W	

Ref. No.	Part No.	Part Name & Description	Remarks
R167	ERJ6GEYJ473	Chip, 47kΩ 1/10W	
R201	ERJ6GEYJ103	Chip, 10kΩ 1/10W	
R202	ERJ3GEYJ273V	Chip, 27kΩ 1/16W	
R203	ERJ6GEYJ122	Chip, 1.2kΩ 1/10W	
R204	ERJ6GEYJ103	Chip, 10kΩ 1/10W	
R205	ERJ3GEYJ103V	Chip, 10kΩ 1/16W	
R207	ERJ6GEYJ273	Chip, 27kΩ 1/10W	
R208	ERJ6GEYJ121	Chip, 120Ω 1/10W	
R209	ERJ3GEYJ152V	Chip, 1.5kΩ 1/16W	
R210	ERJ3GEYJ152V	Chip, 1.5kΩ 1/16W	
R211	ERJ3GEYJ101V	Chip, 100Ω 1/16W	
R212	ERJ3GEYJ101V	Chip, 100Ω 1/16W	
R215	ERJ3GEYJ562V	Chip, 5.6kΩ 1/16W	
R216	ERJ3GEYJ682V	Chip, 6.8kΩ 1/16W	
R217	ERJ3GEYJ183V	Chip, 18kΩ 1/16W	
R231	ERJ3GEYJ683V	Chip, 68kΩ 1/16W	
R232	ERJ3GEYJ274V	Chip, 270kΩ 1/16W	
R233	ERJ6GEYJ104	Chip, 100kΩ 1/10W	
R234	ERJ6GEYJ104	Chip, 100kΩ 1/10W	
R235	ERJ6GEYJ104	Chip, 100kΩ 1/10W	
R236	ERJ6GEYJ104	Chip, 100kΩ 1/10W	
R237	ERJ3GEYJ473V	Chip, 47kΩ 1/16W	
R238	ERJ3GEYJ473V	Chip, 47kΩ 1/16W	
R249	ERJ6GEYJ181	Chip, 180Ω 1/10W	
R250	ERJ6GEYJ152	Chip, 1.5kΩ 1/10W	
R252	ERJ6GEYJ272	Chip, 2.7kΩ 1/10W	
R253	ERJ6GEYJ102	Chip, 1kΩ 1/10W	
R258	ERJ6GEYJ103	Chip, 10kΩ 1/10W	
R259	ERJ6GEYJ393	Chip, 39kΩ 1/10W	
R261	ERJ3GEYJ683V	Chip, 68kΩ 1/16W	
R262	ERJ3GEYJ274V	Chip, 270kΩ 1/16W	
R269	ERJ3GEYJ224V	Chip, 220kΩ 1/16W	
R279	ERJ6GEYJ181	Chip, 180Ω 1/10W	
R280	ERJ6GEYJ152	Chip, 1.5kΩ 1/10W	
R282	ERJ6GEYJ272	Chip, 2.7kΩ 1/10W	
R283	ERJ6GEYJ102	Chip, 1kΩ 1/10W	
R284	ERJ6GEYJ181	Chip, 180Ω 1/10W	
R285	ERJ6GEYJ181	Chip, 180Ω 1/10W	
R286	ERJ6GEYJ181	Chip, 180Ω 1/10W	
R287	ERJ6GEYJ181	Chip, 180Ω 1/10W	
R288	ERJ6GEYJ103	Chip, 10kΩ 1/10W	
R289	ERJ6GEYJ393	Chip, 39kΩ 1/10W	
R299	ERJ3GEYJ224V	Chip, 220kΩ 1/16W	
R301	ERJ6GEYJ103	Chip, 10kΩ 1/10W	
R302	ERJ3GEYJ273V	Chip, 27kΩ 1/16W	
R303	ERJ6GEYJ102	Chip, 1kΩ 1/10W	
R304	ERJ6GEYJ103	Chip, 10kΩ 1/10W	
R305	ERJ3GEYJ103V	Chip, 10kΩ 1/16W	
R307	ERJ6GEYJ273	Chip, 27kΩ 1/10W	
R308	ERJ6GEYJ121	Chip, 120Ω 1/10W	
R309	ERJ3GEYJ152V	Chip, 1.5kΩ 1/16W	
R310	ERJ3GEYJ152V	Chip, 1.5kΩ 1/16W	
R311	ERJ3GEYJ101V	Chip, 100Ω 1/16W	
R312	ERJ3GEYJ101V	Chip, 100Ω 1/16W	
R315	ERJ3GEYJ562V	Chip, 5.6kΩ 1/16W	
R316	ERJ3GEYJ682V	Chip, 6.8kΩ 1/16W	
R317	ERJ3GEYJ183V	Chip, 18kΩ 1/16W	
R331	ERJ3GEYJ683V	Chip, 68kΩ 1/16W	
R332	ERJ3GEYJ274V	Chip, 270kΩ 1/16W	
R333	ERJ6GEYJ104	Chip, 100kΩ 1/10W	
R334	ERJ6GEYJ104	Chip, 100kΩ 1/10W	
R335	ERJ6GEYJ104	Chip, 100kΩ 1/10W	
R336	ERJ6GEYJ104	Chip, 100kΩ 1/10W	
R337	ERJ3GEYJ473V	Chip, 47kΩ 1/16W	
R338	ERJ3GEYJ473V	Chip, 47kΩ 1/16W	
R349	ERJ6GEYJ181	Chip, 180Ω 1/10W	
R350	ERJ6GEYJ152	Chip, 1.5kΩ 1/10W	
R352	ERJ6GEYJ272	Chip, 2.7kΩ 1/10W	
R353	ERJ6GEYJ102	Chip, 1kΩ 1/10W	
R354	ERJ6GEYJ474	Chip, 470kΩ 1/10W	
R355	ERJ6GEYJ474	Chip, 470kΩ 1/10W	
R356	ERJ6GEYJ472	Chip, 4.7kΩ 1/10W	
R357	ERJ3GEYJ182V	Chip, 1.8kΩ 1/16W	

Ref. No.	Part No.	Part Name & Description	Remarks
R358	ERJ6GEYJ103	Chip, 10kΩ 1/10W	
R359	ERJ6GEYJ393	Chip, 39kΩ 1/10W	
R361	ERJ3GEYJ683V	Chip, 68kΩ 1/16W	
R362	ERJ3GEYJ274V	Chip, 270kΩ 1/16W	
R369	ERJ3GEYJ224V	Chip, 220kΩ 1/16W	
R379	ERJ6GEYJ181	Chip, 180Ω 1/10W	
R380	ERJ6GEYJ152	Chip, 1.5kΩ 1/10W	
R382	ERJ6GEYJ272	Chip, 2.7kΩ 1/10W	
R383	ERJ6GEYJ102	Chip, 1kΩ 1/10W	
R385	ERJ3GEYJ473V	Chip, 47kΩ 1/16W	
R388	ERJ6GEYJ103	Chip, 10kΩ 1/10W	
R389	ERJ6GEYJ393	Chip, 39kΩ 1/10W	
R399	ERJ3GEYJ224V	Chip, 220kΩ 1/16W	
R401	ERJ3GEYJ472V	Chip, 4.7kΩ 1/16W	
R402	ERJ3GEYJ562V	Chip, 5.6kΩ 1/16W	
R403	ERJ3GEYJ272V	Chip, 2.7kΩ 1/16W	
R404	ERJ3GEYJ102V	Chip, 1kΩ 1/16W	
R405	ERJ3GEYJ392V	Chip, 3.9kΩ 1/16W	
R406	ERJ6GEYJ122	Chip, 1.2kΩ 1/10W	
R407	ERJ3GEYJ561V	Chip, 560Ω 1/16W	
R409	ERJ3GEY0R00V	Chip, 0Ω 1/16W	
R410	ERJ3GEYJ272V	Chip, 2.7kΩ 1/16W	
R411	ERJ3GEYJ102V	Chip, 1kΩ 1/16W	
R412	ERJ3GEYJ392V	Chip, 3.9kΩ 1/16W	
R413	ERJ3GEYJ122V	Chip, 1.2kΩ 1/16W	
R414	ERJ3GEYJ561V	Chip, 560Ω 1/16W	
R416	ERX1SJR2E	Metal Film, 2.2Ω 1W	
R501	ERJ6GEYJ822	Chip, 8.2kΩ 1/10W	
R502	ERJ6GEYJ823	Chip, 82kΩ 1/10W	
R503	ERJ6GEYJ104	Chip, 100kΩ 1/10W	
R504	ERJ6GEYJ103	Chip, 10kΩ 1/10W	
R505	ERJ6GEYJ124	Chip, 120kΩ 1/10W	
R506	ERJ6GEYJ103	Chip, 10kΩ 1/10W	
R507	ERJ6GEYJ222	Chip, 2.2kΩ 1/10W	
R508	ERJ6GEYJ222	Chip, 2.2kΩ 1/10W	
R509	ERJ6GEYJ101	Chip, 100Ω 1/10W	
R510	ERJ6GEYJ560	Chip, 56Ω 1/10W	
R601	ERJ3GEYJ473V	Chip, 47kΩ 1/16W	
R602	ERJ3GEYJ473V	Chip, 47kΩ 1/16W	
R603	ERJ3GEYJ473V	Chip, 47kΩ 1/16W	
R609	ERJ3GEYJ222V	Chip, 2.2kΩ 1/16W	
R611	ERJ6GEYJ473	Chip, 47kΩ 1/10W	
R612	ERJ6GEYJ102	Chip, 1kΩ 1/10W	
R613	ERJ6GEYJ102	Chip, 1kΩ 1/10W	
R614	ERJ3GEY0R00V	Chip, 0Ω 1/16W	
R615	ERJ3GEYJ473V	Chip, 47kΩ 1/16W	
R616	ERJ3GEYJ104V	Chip, 100kΩ 1/16W	
R617	ERJ3GEYJ564V	Chip, 560kΩ 1/16W	
R619	ERJ6GEYJ221	Chip, 220Ω 1/10W	
R620	ERJ3GEYJ220V	Chip, 22Ω 1/16W	
R621	ERJ3GEYJ103V	Chip, 10kΩ 1/16W	
R622	ERJ3GEYJ105V	Chip, 1MΩ 1/16W	
R623	ERJ3GEYJ103V	Chip, 10kΩ 1/16W	
R624	ERJ3GEYJ105V	Chip, 1MΩ 1/16W	
R625	ERJ3GEYJ272V	Chip, 2.7kΩ 1/16W	
R626	ERJ6GEYJ473	Chip, 47kΩ 1/10W	
R627	ERJ6GEY0R00V	Chip, 0Ω 1/10W	
R628	ERJ3GEYJ103V	Chip, 10kΩ 1/16W	
R630	ERJ6GEYJ102	Chip, 1kΩ 1/10W	
R631	ERJ3GEYJ183V	Chip, 18kΩ 1/16W	
R632	ERJ3GEYJ432V	Chip, 4.3kΩ 1/16W	
R633	ERJ6GEYJ152	Chip, 1.5kΩ 1/10W	
R634	ERJ3GEYJ151V	Chip, 150Ω 1/16W	
R635	ERJ6GEYJ152	Chip, 1.5kΩ 1/10W	
R636	ERJ6GEYJ152	Chip, 1.5kΩ 1/10W	
R637	ERJ3GEYJ332V	Chip, 3.3kΩ 1/16W	
R638	ERJ6GEYJ102	Chip, 1kΩ 1/10W	
R639	ERJ6GEYJ181	Chip, 180Ω 1/10W	
R640	ERJ6GEYJ102	Chip, 1kΩ 1/10W	
R641	ERJ3GEYJ222V	Chip, 2.2kΩ 1/16W	
R642	ERJ3GEYJ472V	Chip, 4.7kΩ 1/16W	
R643	ERJ6GEYJ102	Chip, 1kΩ 1/10W	
R644	ERJ3GEYJ103V	Chip, 10kΩ 1/16W	

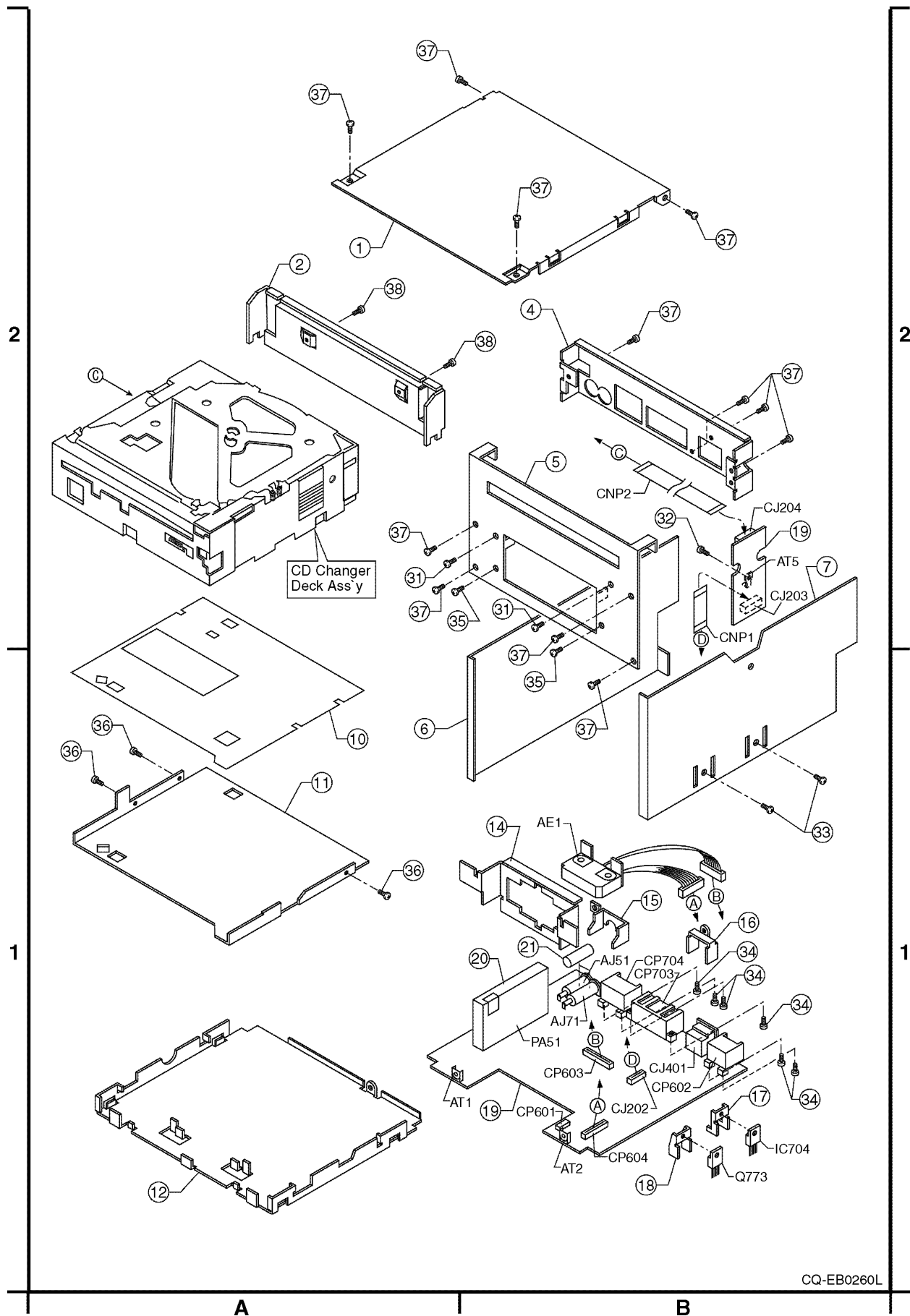
Ref. No.	Part No.	Part Name & Description	Remarks
R645	ERJ6GEYJ102	Chip, 1kΩ 1/10W	
R646	ERJ6GEYJ822	Chip, 8.2kΩ 1/10W	
R647	ERJ6GEYJ472	Chip, 4.7kΩ 1/10W	
R648	ERJ6GEYJ102	Chip, 1kΩ 1/10W	
R649	ERJ6GEY0R00V	Chip, 0Ω 1/10W	
R650	ERJ6GEY0R00V	Chip, 0Ω 1/10W	
R651	ERJ3GEYJ102V	Chip, 1kΩ 1/16W	
R653	ERJ6GEYJ473	Chip, 47kΩ 1/10W	
R654	ERJ6GEYJ102	Chip, 1kΩ 1/10W	
R659	ERJ3GEYJ332V	Chip, 3.3kΩ 1/16W	
R660	ERJ3GEYJ332V	Chip, 3.3kΩ 1/16W	
R661	ERJ3GEYJ332V	Chip, 3.3kΩ 1/16W	
R662	ERJ3GEY0R00V	Chip, 0Ω 1/16W	
R663	ERJ3GEYJ472V	Chip, 4.7kΩ 1/16W	
R664	ERJ3GEYJ472V	Chip, 4.7kΩ 1/16W	
R665	ERJ3GEYJ472V	Chip, 4.7kΩ 1/16W	
R666	ERJ3GEYJ472V	Chip, 4.7kΩ 1/16W	
R667	ERJ6GEYJ472	Chip, 4.7kΩ 1/10W	
R668	ERJ6GEYJ472	Chip, 4.7kΩ 1/10W	
R669	ERJ6ENF1502V	Chip, 15kΩ 1/10W	
R670	ERJ6ENF1502V	Chip, 15kΩ 1/10W	
R671	ERJ6GEYJ102	Chip, 1kΩ 1/10W	
R672	ERJ6GEYJ102	Chip, 1kΩ 1/10W	
R673	ERJ6GEYJ102	Chip, 1kΩ 1/10W	
R674	ERJ6GEYJ473	Chip, 47kΩ 1/10W	
R675	ERJ6GEYJ560	Chip, 56Ω 1/10W	
R676	ERJ6GEYJ222	Chip, 2.2kΩ 1/10W	
R677	ERJ3GEYJ222V	Chip, 2.2kΩ 1/16W	
R678	ERJ3GEYJ222V	Chip, 2.2kΩ 1/16W	
R679	ERJ6GEYJ560	Chip, 56Ω 1/10W	
R680	ERJ3GEYJ222V	Chip, 2.2kΩ 1/16W	
R681	ERJ3GEYJ473V	Chip, 47kΩ 1/16W	
R682	ERJ3GEYJ563V	Chip, 56kΩ 1/16W	
R683	ERJ3GEYJ562V	Chip, 5.6kΩ 1/16W	
R684	ERJ6GEYJ102	Chip, 1kΩ 1/10W	
R685	ERJ6GEYJ102	Chip, 1kΩ 1/10W	
R689	ERJ6GEYJ680	Chip, 68Ω 1/10W	
R690	ERJ6GEYJ104	Chip, 100kΩ 1/10W	
R701	ERX12SJR22E	Metal Film, 0.22Ω 1/2W	
R702	ERX12SJR22E	Metal Film, 0.22Ω 1/2W	
R703	ERJ6GEYJ472	Chip, 4.7kΩ 1/10W	
R704	ERJ6GEYJ563	Chip, 56kΩ 1/10W	
R707	ERJ6GEYJ102	Chip, 1kΩ 1/10W	
R708	ERJ6GEYJ123	Chip, 12kΩ 1/10W	
R709	ERJ6GEYJ123	Chip, 12kΩ 1/10W	
R710	ERJ6GEY0R00V	Chip, 0Ω 1/10W	
R711	ERJ6GEYJ222	Chip, 2.2kΩ 1/10W	
R715	ERX12SJR22E	Metal Film, 0.22Ω 1/2W	
R716	ERJ6GEYJ223	Chip, 22kΩ 1/10W	
R718	ERJ3GEYJ222V	Chip, 2.2kΩ 1/16W	
R719	ERJ3GEYJ222V	Chip, 2.2kΩ 1/16W	
R721	ERJ8GEYJ122V	Chip, 1.2kΩ 1/8W	
R722	ERJ6GEYJ1R0	Chip, 1.0Ω 1/10W	
R724	ERJ6GEYJ333	Chip, 33kΩ 1/10W	
R725	ERJ6GEYJ102	Chip, 1kΩ 1/10W	
R726	ERJ6GEYJ122	Chip, 1.2kΩ 1/10W	
R727	ERJ6GEYJ220	Chip, 22Ω 1/10W	
R728	ERJ6GEYJ222	Chip, 2.2kΩ 1/10W	
R729	ERJ6GEYJ222	Chip, 2.2kΩ 1/10W	
R730	ERJ6GEYJ222	Chip, 2.2kΩ 1/10W	
R731	ERJ3GEYJ103V	Chip, 10kΩ 1/16W	
R732	ERJ6GEYJ222	Chip, 2.2kΩ 1/10W	
R734	ERJ6GEYJ103	Chip, 10kΩ 1/10W	
R735	ERJ3GEYJ334V	Chip, 330kΩ 1/16W	
R736	ERJ6GEYJ683	Chip, 68kΩ 1/10W	
R737	ERJ6GEYJ333	Chip, 33kΩ 1/10W	
R738	ERJ6GEYJ333	Chip, 33kΩ 1/10W	
R740	ERJ6GEYJ273	Chip, 27kΩ 1/10W	
R741	ERJ6GEYJ2R2	Chip, 2.2Ω 1/10W	
R742	ERJ6GEYJ333	Chip, 33kΩ 1/10W	
R743	ERJ6GEYJ333	Chip, 33kΩ 1/10W	
R744	ERJ3GEYJ473V	Chip, 47kΩ 1/16W	
R747	ERJ6GEYJ103	Chip, 10kΩ 1/10W	



Ref. No.	Part No.	Part Name & Description	Remarks
R748	ERJ3GEYJ123V	Chip, 12kΩ 1/16W	
R751	ERJ6GEYJ102	Chip, 1kΩ 1/10W	
R752	ERJ6GEYJ102	Chip, 1kΩ 1/10W	
R754	ERJ6GEYJ102	Chip, 1kΩ 1/10W	
R755	ERJ3GEYJ102V	Chip, 1kΩ 1/16W	
R756	ERJ3GEYJ102V	Chip, 1kΩ 1/16W	
R757	ERG1SJ331E	Metal Oxid, 330Ω 1W	
R762	ERJ8GEYJ122V	Chip, 1.2kΩ 1/8W	
R768	ERX1SJR2E	Metal Film, 2.2Ω 1W	
R769	ERJ6GEYJ472	Chip, 4.7kΩ 1/10W	
R770	ERJ6GEYJ103	Chip, 10kΩ 1/10W	
R771	ERJ8GEYJ391V	Chip, 390Ω 1/8W	
R772	ERJ6GEYJ182	Chip, 1.8kΩ 1/10W	
R773	ERJ3GEYJ122V	Chip, 1.2kΩ 1/16W	
R774	ERJ3GEYJ102V	Chip, 1kΩ 1/16W	
R775	ERJ3GEYJ473V	Chip, 47kΩ 1/16W	
R776	ERJ6GEY0R00V	Chip, 0Ω 1/10W	
R777	ERJ6GEYJ473	Chip, 47kΩ 1/10W	
R778	ERJ6GEYJ222	Chip, 2.2kΩ 1/10W	
R779	ERJ6GEYJ222	Chip, 2.2kΩ 1/10W	
R780	ERJ3GEYJ103V	Chip, 10kΩ 1/16W	
R781	ERJ6GEY0R00V	Chip, 0Ω 1/10W	
R782	ERJ3GEYJ103V	Chip, 10kΩ 1/16W	
R783	ERJ3GEYJ103V	Chip, 10kΩ 1/16W	
R784	ERJ8GEYJ122V	Chip, 1.2kΩ 1/8W	
R785	ERJ8GEYJ122V	Chip, 1.2kΩ 1/8W	
R786	ERJ8GEY0R00V	Chip, 0Ω 1/8W	
R787	ERJ6GEY0R00V	Chip, 0Ω 1/10W	
R910	ERJ6GEYJ222	Chip, 2.2kΩ 1/10W	
R911	ERJ6GEYJ102	Chip, 1kΩ 1/10W	
R912	ERJ6GEYJ2R2	Chip, 2.2Ω 1/10W	
R914	ERX1SJR2E	Metal Film, 2.2Ω 1W	
<b>CONNECTORS</b>			
CJ202	K1MN14A00053	Connector,14P	
CJ203	K1MN14A00053	Connector,14P	
CJ204	K1MN14B00093	Connector,14P	
CJ401	YEAE012081A	Connector,13P	
CP602	K1FA110B0017	Connector,10P	
CP603	K1KA10A00109	Connector,10P	
CP604	K1KA09A00046	Connector,9P	
CP703	YEAE14SDLYL	Connector,14P	
CP704	K1FA114B0010	Connector,14P	
<b>SWITCHES</b>			
SW1	YEAS08042	Switch	
<b>COILS</b>			
L51	YELT02M1R8KT	Coil	
L52	G1C3R3K00003	Coil	
L53	YELT02M1R8KT	Coil	
L71	G1C3R3K00003	Coil	
L163	G1C3R3K00003	Coil	
L501	G1C3R3K00003	Coil	
L502	G1C3R3K00003	Coil	
L601	YELT03N5R6KT	Coil	
L602	G1C3R3K00003	Coil	
L603	G1C3R3K00003	Coil	
L604	G1C3R3K00003	Coil	
L605	G1C3R3K00003	Coil	
L701	G0A201E00001	Coil	
L702	G0A201E00001	Coil	
L751	J0JCC0000012	Coil	
<b>CRYSTALS</b>			
XL20	H0D720400003	Crystal	
XL601	YEXL49U0419S	Crystal	
XL602	YEXLMC60327	Crystal	

Ref. No.	Part No.	Part Name & Description	Remarks
<b>NEON TUBES</b>			
Z51	J0LM00000001	Neon Tube	
Z71	J0LM00000001	Neon Tube	
<b>NETWORK RESISTORS</b>			
RA600	EXBV8V471JV	Network Resistor	
RA602	EXBV8V222JV	Network Resistor	
RA603	EXBV8V222JV	Network Resistor	
RA604	EXBV8V222JV	Network Resistor	
RA605	EXBV8V222JV	Network Resistor	
RA606	EXBV8V222JV	Network Resistor	
RA608	EXBV8V222JV	Network Resistor	
RA609	EXBV8V222JV	Network Resistor	
RA612	EXBV8V222JV	Network Resistor	
RA614	EXBV8V222JV	Network Resistor	
<b>THERMISTOR</b>			
R415	D4ZZ00000015	Thermistor	
R739	D4ZZ00000015	Thermistor	
R915	D4ZZ00000023	Thermistor	
R916	D4ZZ00000015	Thermistor	
<b>FILTER</b>			
BPF51	YEXC07T009	Coil	
<b>INSTALLATION PARTS</b>			
AJ51	YEAA10066	Antenna Receptacle	
AJ71	YEAA10074A	Antenna Receptacle	
<b>CONNECTORS</b>			
AE1	K1PA22D00001	Connector,22P	
CNP1	K9ZZ00000384	Connector,14P	
CNP2	K9ZZ00000970	Connector,14P	
<b>Mechanical Parts</b>			
<b>MISCELLANEOUS</b>			
AT1	YEFX0213797	Bracket	
AT2	YEFX0213797	Bracket	
AT5	YEAT03346A	Terminal	
1	YEFA031794	Upper Cover	
2	YEFX0215991	Bracket,CD Deck	
4	YEFX0215829	Bracket,Rear	
5	YEFA07582A	Front Plate	
6	YEFA09740	Side Plate (Left)	
7	YEFA09741	Side Plate (Right)	
10	YEFV012219	Insulator	
11	YEFV03765	Magnetic Shield	
12	YEFA05825A	Bottom Cover	
14	YEFX0215830	Bracket,AE1	
15	YEFX0214200	Bracket,Antenna Receptacle	
16	YEFX0213488	Bracket,CJ401	
17	YEFX0214202	Bracket,IC704	
18	YEFX0213909	Bracket,Q773	
19	YEP0PT6893AO	PCB w/Component Main/Connector	RTL
20	YEFV03733	Magnetic Shield	
21	YEFX0213232B	Bracket,AJ51 or AJ71	
31	YEJS06219A	Screw	
32	YEJS06254	Screw	
33	YEJT03009	Tapping Screw	
34	YEJT01089	Tapping Screw	
35	YEJT03131	Tapping Screw	
36	XSB3+4FX	Screw,3*4	
37	XTB3+6FFX	Tapping Screw,3*6	
38	XTB3+5FFX	Tapping Screw,3*5	

# 10 EXPLODED VIEW (Unit)



CQ-EB0260L

# 11 CD CHANGER PARTS LIST

Ref. No.	Part No.	Part Name & Description	Remarks
[E9060A] CD Servo Block			
IC's and TRANSISTORS			
IC101	C1BB00000624	IC	
IC201	MN662785TBUC	IC	
IC202	C3ABMB000009	IC	
IC301	C2BBGF000364	IC	
IC401	C0DBZGE00002	IC	
IC501	C0GBH0000006	IC	
IC601	C0GBY0000014	IC	
Q101	2SB766ATX	Transistor	
DIODE			
D301	MA152WKTX	Diode	
CAPACITORS			
C1	EEVFC0J102P	Electrolytic, 1000µF 6.3WV	
C101	F1H1C104A005	Ceramic, 0.1µF 16WV	
C102	F1H1C104A005	Ceramic, 0.1µF 16WV	
C103	F3H0J1070005	Tantalum, 100µF 6.3WV	
C104	F1H1C104A005	Ceramic, 0.1µF 16WV	
C105	F1H1C104A005	Ceramic, 0.1µF 16WV	
C106	F1H1H8210002	Ceramic, 820PF 50WV	
C107	F1H1C104A005	Ceramic, 0.1µF 16WV	
C108	F1H1H682A190	Ceramic, 6800PF 50WV	
C109	F1H1H222A190	Ceramic, 2200PF 50WV	
C110	F1K0J1060015	Ceramic, 10 µF 6.3WV	
C111	F1H1H1010005	Ceramic, 100PF 50WV	
C112	F1H1E103A011	Ceramic, 0.01µF 25WV	
C113	F1H1E103A011	Ceramic, 0.01µF 25WV	
C114	F1H1H2710006	Ceramic, 270PF 50WV	
C115	F1H1H6810005	Ceramic, 680PF 50WV	
C116	F1H1C104A005	Ceramic, 0.1µF 16WV	
C117	F1K0J1060015	Ceramic, 10 µF 6.3WV	
C201	F1H1C104A005	Ceramic, 0.1µF 16WV	
C202	F1H1E123A011	Ceramic, 0.012µF 25WV	
C203	YECUZ1A224KX	Ceramic, 0.22µF 10WV	
C205	F1H1A4740004	Ceramic, 0.47µF 10WV	
C206	F1K0J1060015	Ceramic, 10 µF 6.3WV	
C208	EEVFC0J102P	Electrolytic, 1000µF 6.3WV	
C209	F1K0J1060015	Ceramic, 10 µF 6.3WV	
C210	F1H0J1050010	Ceramic, 1µF 6.3WV	
C211	F1H0J1050010	Ceramic, 1µF 6.3WV	
C301	F1K0J1060015	Ceramic, 10 µF 6.3WV	
C302	F1H1E103A011	Ceramic, 0.01µF 25WV	
C312	F1H1C104A005	Ceramic, 0.1µF 16WV	
C313	F1H1C104A005	Ceramic, 0.1µF 16WV	
C315	F1H1C104A005	Ceramic, 0.1µF 16WV	
C401	F1H0J1050010	Ceramic, 1µF 6.3WV	
C402	F1K0J1060015	Ceramic, 10 µF 6.3WV	
C501	F1H1C104A005	Ceramic, 0.1µF 16WV	
C502	F1H1C104A005	Ceramic, 0.1µF 16WV	
C503	F1H1C104A005	Ceramic, 0.1µF 16WV	
C504	YECUZ1C104KX	Ceramic, 0.1µF 16WV	
C601	F1H1H8210002	Ceramic, 820PF 50WV	
C602	F1H1H8210002	Ceramic, 820PF 50WV	
C603	F1H0J1050010	Ceramic, 1µF 6.3WV	
C604	YECUZ1C333KX	Ceramic, 0.033µF 16WV	
C605	F1H1C104A005	Ceramic, 0.1µF 16WV	
C606	F1H1C104A005	Ceramic, 0.1µF 16WV	
C607	ECEV1CA470SP	Electrolytic, 47µF 16WV	
C608	F1K0J1060015	Ceramic, 10 µF 6.3WV	
RESISTORS			
R1	ERJ3GEYJ334V	Chip, 330kΩ 1/16W	
R2	ERJ3GEYJ102V	Chip, 1kΩ 1/16W	

Ref. No.	Part No.	Part Name & Description	Remarks
R3	ERJ3GEYJ102V	Chip, 1kΩ 1/16W	
R101	ERJ6GEYJ1R0V	Chip, 1.0Ω 1/10W	
R102	ERJ3GEYOR00V	Chip, 0Ω 1/16W	
R103	ERJ3GEYOR00V	Chip, 0Ω 1/16W	
R104	ERJ3GEYJ152V	Chip, 1.5kΩ 1/16W	
R105	ERJ3GEYJ152V	Chip, 1.5kΩ 1/16W	
R106	ERJ3GEYJ563V	Chip, 56kΩ 1/16W	
R107	ERJ3GEYJ223V	Chip, 22kΩ 1/16W	
R108	ERJ3GEYJ333V	Chip, 33kΩ 1/16W	
R109	ERJ3GEYJ473V	Chip, 47kΩ 1/16W	
R110	ERJ3GEYJ102V	Chip, 1kΩ 1/16W	
R111	ERJ3GEYJ102V	Chip, 1kΩ 1/16W	
R201	ERJ3GEYJ823V	Chip, 82kΩ 1/16W	
R202	ERJ3GEYJ473V	Chip, 47kΩ 1/16W	
R203	ERJ3GEYJ473V	Chip, 47kΩ 1/16W	
R204	ERJ3GEYJ271V	Chip, 270Ω 1/16W	
R205	ERJ3GEYJ222V	Chip, 2.2kΩ 1/16W	
R206	ERJ3GEYJ330V	Chip, 33Ω 1/16W	
R207	ERJ3GEYJ102V	Chip, 1kΩ 1/16W	
R208	ERJ3GEYJ102V	Chip, 1kΩ 1/16W	
R209	ERJ3GEYJ102V	Chip, 1kΩ 1/16W	
R210	ERJ3GEYJ102V	Chip, 1kΩ 1/16W	
R211	ERJ3GEYJ332V	Chip, 3.3kΩ 1/16W	
R212	ERJ3GEYJ332V	Chip, 3.3kΩ 1/16W	
R213	ERJ3GEYJ105V	Chip, 1MΩ 1/16W	
R214	ERJ3GEYJ151V	Chip, 150Ω 1/16W	
R301	ERJ3GEYJ563V	Chip, 56kΩ 1/16W	
R302	ERJ3GEYJ563V	Chip, 56kΩ 1/16W	
R303	ERJ3GEYJ332V	Chip, 3.3kΩ 1/16W	
R304	ERJ3GEYJ332V	Chip, 3.3kΩ 1/16W	
R305	ERJ3GEYJ563V	Chip, 56kΩ 1/16W	
R306	ERJ3GEYJ563V	Chip, 56kΩ 1/16W	
R307	ERJ3GEYJ683V	Chip, 68kΩ 1/16W	
R308	ERJ3GEYJ683V	Chip, 68kΩ 1/16W	
R309	ERJ3GEYJ683V	Chip, 68kΩ 1/16W	
R310	ERJ3GEYJ332V	Chip, 3.3kΩ 1/16W	
R311	ERJ3GEYJ332V	Chip, 3.3kΩ 1/16W	
R312	ERJ3GEYJ332V	Chip, 3.3kΩ 1/16W	
R313	ERJ3GEYJ332V	Chip, 3.3kΩ 1/16W	
R314	ERJ3GEYJ332V	Chip, 3.3kΩ 1/16W	
R315	ERJ3GEYJ683V	Chip, 68kΩ 1/16W	
R316	ERJ3GEYJ332V	Chip, 3.3kΩ 1/16W	
R317	ERJ3GEYJ221V	Chip, 220Ω 1/16W	
R318	ERJ3GEYJ221V	Chip, 220Ω 1/16W	
R319	ERJ3GEYJ221V	Chip, 220Ω 1/16W	
R320	ERJ3GEYJ221V	Chip, 220Ω 1/16W	
R321	ERJ3GEYJ221V	Chip, 220Ω 1/16W	
R322	ERJ3GEYJ221V	Chip, 220Ω 1/16W	
R323	ERJ3GEYJ103V	Chip, 10kΩ 1/16W	
R324	ERJ3GEYJ103V	Chip, 10kΩ 1/16W	
R325	ERJ3GEYJ332V	Chip, 3.3kΩ 1/16W	
R326	ERJ3GEYJ473V	Chip, 47kΩ 1/16W	
R327	ERJ3GEYOR00V	Chip, 0Ω 1/16W	
R330	ERJ3GEYJ332V	Chip, 3.3kΩ 1/16W	
R501	ERJ3GEYJ121V	Chip, 120Ω 1/16W	
R502	ERJ8GEYJ1R0V	Chip, 1.0Ω 1/8W	
R503	ERJ3GEYJ121V	Chip, 120Ω 1/16W	
R504	ERJ3GEYJ183V	Chip, 18kΩ 1/16W	
R505	ERJ3GEYJ563V	Chip, 56kΩ 1/16W	
R601	ERJ3GEYJ103V	Chip, 10kΩ 1/16W	
R602	ERJ3GEYJ153V	Chip, 15kΩ 1/16W	
R603	ERJ3GEYJ103V	Chip, 10kΩ 1/16W	
R604	ERJ3GEYJ153V	Chip, 15kΩ 1/16W	
R605	ERJ3GEYJ332V	Chip, 3.3kΩ 1/16W	
R606	ERJ3GEYJ332V	Chip, 3.3kΩ 1/16W	
R607	ERJ3GEYJ103V	Chip, 10kΩ 1/16W	
R608	ERJ3GEYJ153V	Chip, 15kΩ 1/16W	
R609	ERJ3GEYJ153V	Chip, 15kΩ 1/16W	
R610	ERJ3GEYJ332V	Chip, 3.3kΩ 1/16W	
R611	ERJ3GEYJ103V	Chip, 10kΩ 1/16W	
R612	ERJ3GEYJ103V	Chip, 10kΩ 1/16W	
R613	ERJ3GEYJ332V	Chip, 3.3kΩ 1/16W	
R614	ERJ3GEYJ101V	Chip, 100Ω 1/16W	

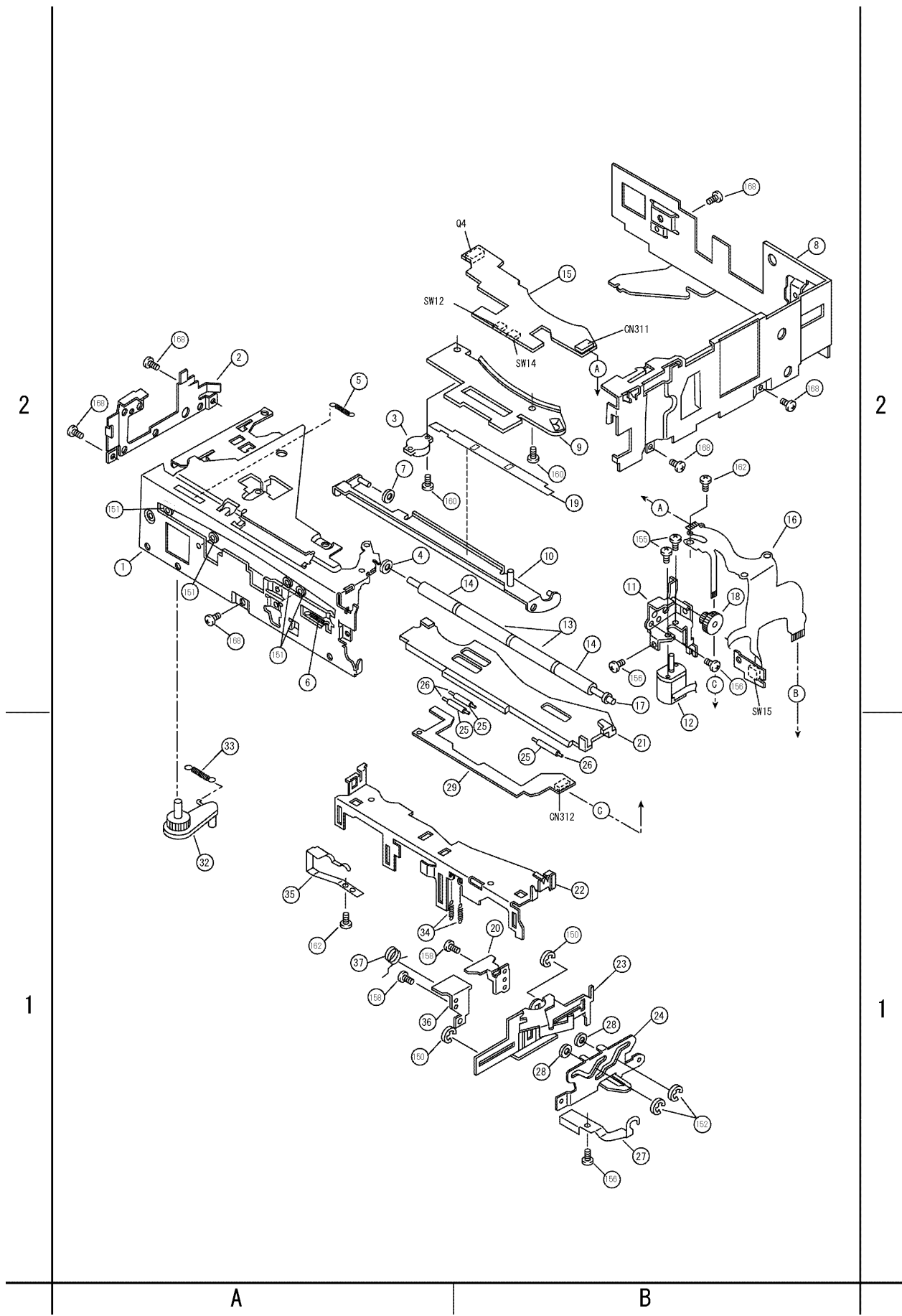
Ref. No.	Part No.	Part Name & Description	Remarks
R615	ERJ3GEYJ563V	Chip, 56kΩ 1/16W	
R616	ERJ3GEYJ153V	Chip, 15kΩ 1/16W	
<b>CONNECTORS</b>			
CN1	K1MN14B00080	Connector, 14P	
CN2	K1MNO6B00083	Connector, FPC 6P	
CN101	YEAESFW15R1E	Connector, 15P	
CN301	K1MN19B00054	Connector, 19P	
CN302	K1MNO6B00085	Connector, 6P	
CN501	YEAESFW15R1E	Connector, 15P	
CN601	YEAES326102	Connector, 2P	
<b>SWITCHES</b>			
SW8	KOL1BA000023	Switch	
SW9	KOL1BA000022	Switch	
SW10	KOL1BA000022	Switch	
SW11	KOL1BA000022	Switch	
<b>CRYSTALS</b>			
XL201	H2D338500002	Crystal	
XL301	H2D500400004	Crystal	
<b>NOISE FILTERS</b>			
L1	JOJAC0000047	Noise Filter	
L2	JOJAC0000047	Noise Filter	
L3	JOJAC0000047	Noise Filter	
L4	JOJAC0000047	Noise Filter	
L5	JOJAC0000047	Noise Filter	
L6	JOJAC0000047	Noise Filter	
L201	JOJAC0000047	Noise Filter	
L202	JOJAC0000047	Noise Filter	
[E2784]			
<b>CONNECTOR</b>			
CNP1	K1MN11B00062	Connector, 14P	
<b>SWITCH</b>			
SW1	KOL1BA000023	Push Switch	
[E2787]			
<b>SWITCH</b>			
SW15	KOL1BA000023	Push Switch	
[E2788]			
<b>TRANSISTOR</b>			
Q1	B3NAA0000065	Transistor	
<b>SWITCH</b>			
SW2	KOL1BA000023	Push Switch	
[E2785]			
<b>IC's and TRANSISTORS</b>			
Q4	B3NAA0000065	Transistor	
Q5	B3HB00000012	Transistor	
Q6	B3HB00000012	Transistor	
Q7	B3HB00000012	Transistor	
Q13	B3HB00000012	Transistor	

Ref. No.	Part No.	Part Name & Description	Remarks
<b>CONNECTOR</b>			
CN311	K1MN09B00006	Connector, 9P	
<b>SWITCHES</b>			
SW12	KOL1BA000023	Switch	
SW14	KOL1BA000023	Switch	
[E2786]			
<b>DIODES</b>			
D5	B3EB00000013	Diode	
D6	B3EB00000013	Diode	
D7	B3EB00000013	Diode	
D13	B3EB00000013	Diode	
<b>CONNECTOR</b>			
CN312	K1MN06A00016	Connector, 6P	
<b>Mechanical Parts</b>			
<b>MISCELLANEOUS</b>			
AJ1	YGAJ071495	Motor Power Cord w/Plug, 2P	
AT1	YEATSD00405	Bracket, GND	
1	YGFA011975A	Upper Chassis Ass'y	
2	YGFX018678A	Side Bracket L	
3	YGFS04752	Rotary Damper Ass'y	
4	YEFW04159A	Roller Shaft Collar	
5	YGFX0052588	Outline Detection Spring	
6	YGFX0052591	Feeder lock Lever Spring	
7	YGFX0051590	Off Backlash Spring	
8	YGFA011965A	Side Chassis R	
9	YGFX206150	Disc Guide U	
10	YGFX249492A	Feeder Arm Ass'y	
11	YGFX018690	Loading Motor Bracket Ass'y	
12	YGPOFX4762	Loading Motor Ass'y	
13	YEFX218299	Rubber Roller	
14	YGFW05412	Disc Collar	
15	YGPOPT2785A0	PCB w/Component	RTL
16	YGAP2787	Loading Motor FPC	
17	YGFW05414	Collar Shaft Ass'y	
18	YGFX0031122	Loading Gear	
19	YGFX206157	Feeder Piece	
20	YGFX206152A	Guide FL	
21	YGFX206158	Slide Plate	
22	YGFX0462168A	Feeder Plate	
23	YGFX219134A	Guide F Base	
24	YGFX0462182	Guide Cam F Plate Ass'y	
25	YGFX218296	Disc Roller	
26	YGFW062741	Shaft	
27	YGFX0052602	Roller Plate Spring	
28	YGFW04181	Guide Plate Collar	
29	YGPOPT2786A0	PCB w/Component	RTL
32	YGFX0462153	Push Lever	
33	YGFX0052589	Push Spring	
34	YGFX0052590	Feeder Spring	
35	YGFX0052601A	Spring	
36	YGFX206153	Guide FU	
37	YEFX0052335	Guide Spring F	

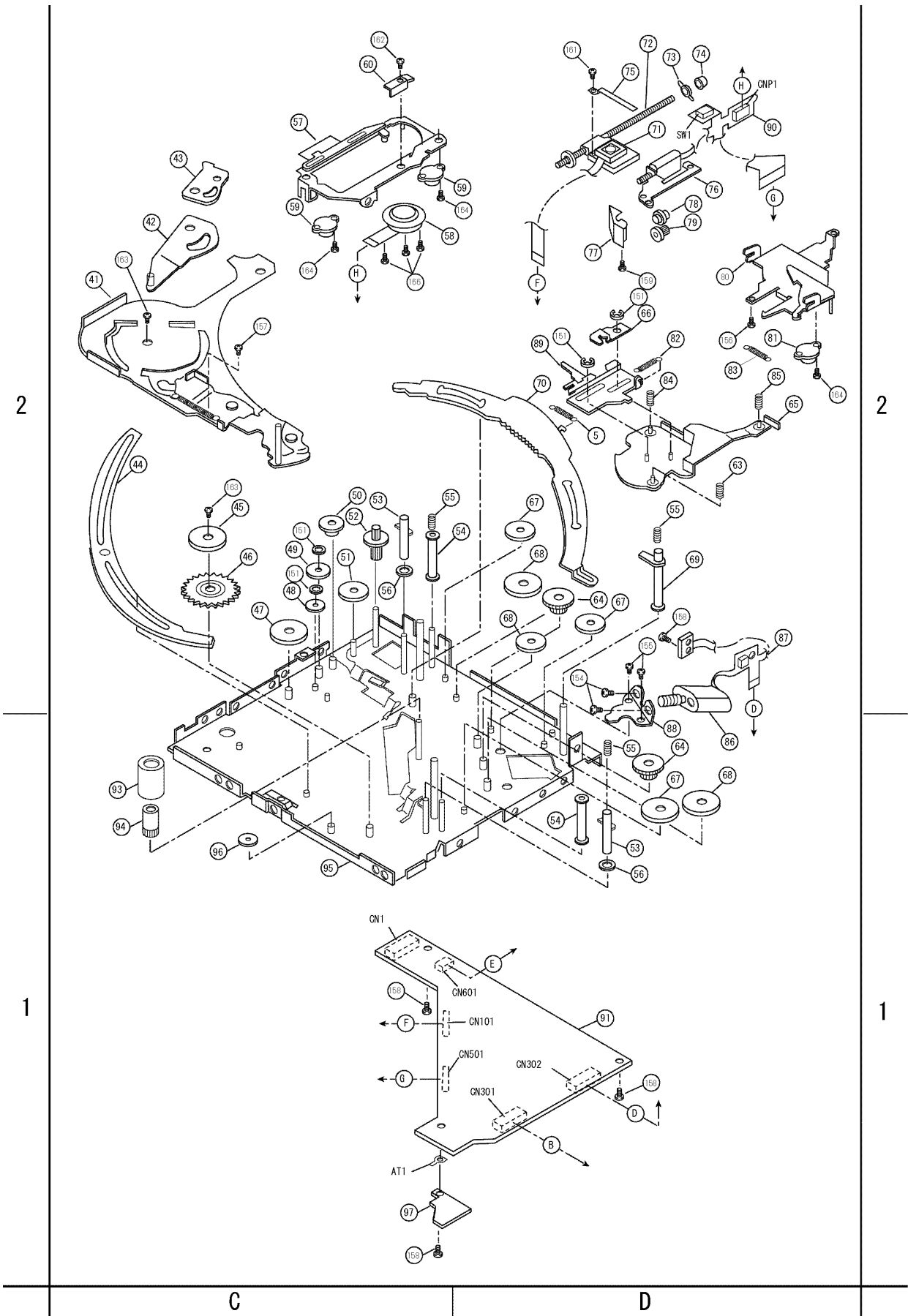
Ref. No.	Part No.	Part Name & Description	Remarks
41	YGFA011977C	Swing Chassis Ass'y	
42	YGFX0461903	Guide Lever Ass'y B	
43	YGFX018595	Guide B	
44	YGFX0462172	Horizontal Rack	
45	YGFX234196	Horizontal Cam	
46	YGFX0031127B	Horizontal Cam Gear	
47	YGFX0031130	Horizontal Cam Gear	
48	YEFX003931	Horizontal Gear 5	
49	YEFX003899B	Horizontal Gear 4	
50	YGFX0031125	Horizontal Gear 3	
51	YGFX0031139	Gear	
52	YEFX003896	Horizontal Gear 1	
53	YEFX003884	Stocker Cam 3	
54	YEFX003883B	Stocker Cam 2	
55	YGFX0052595	Stocker Thrust Spring	
56	YEFX003875A	Elevator Gear 4	
57	YGFA011973	Suspension Chassis Ass'y	
58	YGP0FX4646	Spindle Motor Ass'y	
59	YGFS04745	Damper 2	
60	YGFX206156	Disc Guide S	
63	YGFX0052582A	Damper Spring R	
64	YEFX003872	Elevator Gear 1	
65	YGFA011963A	Swing Chassis	
66	YGFX0462183	Lever	
67	YGFX003873	Elevator Gear 2	
68	YEFX003874	Elevator Gear 3	
69	YEFX003882A	Stocker Cam 1	
70	YGFX0462173	Stocker Rack	
71	YEP0FX4382	Optical Pick-up Ass'y	
72	YGJT03301	Feed Screw Ass'y	
73	YGFX0052586	Thrust Adjustment Spring	
74	YEFW04161A	Feed Screw Housing	
75	YEFX0052557	Travers Guide	
76	YGP0FX4763	Traverse Motor Ass'y	
77	YGFX018682	Gear Bracket	
78	YGFX0031119	TR Gear 2	
79	YGFX0031120	TR Gear 3	
80	YGFA011974	Suspension Chassis Bottom Ass'y	
81	YGFS04746	Damper 1	
82	YGFX0052596	Stocker Spring	
83	YGFX0052587	Unclamp Spring	
84	YGFX0052583A	Damper Spring	
85	YGFX0052581A	Damper Spring F	
86	YEP0FX3660S	Elevator Motor Ass'y	
87	YGAP2788	Elevator Motor FPC	
88	YGFX018600	Elevator Motor Bracket	
89	YGFX0462174A	Suspension Lock Plate	
90	YGAP2784	Suspension FPC	
91	YGP0PT9060A0	PCB w/Component	RTL
93	YEFX233521	Disc Holder L	
94	YGFX0031007	Disc Hold Gear	
95	YGFA011976B	Main Chassis Ass'y	
96	YGFX0031128	Clamp Cam Gear	
97	YGFX0462166	SW Cover	
100	YGFX0462184	Guide Cam B Plate Ass'y	
101	YGFX219135	Guide B Base Ass'y	
102	YGFX206155A	Guide BL	
103	YEFX206136D	Guide BU	
104	YEFX0052272	Guide Spring B	
105	YGFX0462164	Avoidance Lever 1	
106	YGFX0031137	Pushout Cam Gear	
110	YGFA011978	Stocker Top Coner Ass'y	
111	YGFX233526	Stocker Tray Support	
112	YGFX0462163	Pushout Lever	
113	YGFX018691	Horizontal Motor Bracket Ass'y	
114	YGP0FX4760	Horizontal Motor Ass'y	
115	YGFX0031133	Pushout Gear 2	
116	YGFX0031131	Pushout Gear 1	
117	YEFX233506	Disc Holder U	
118	YGFX0052608	Push Lever Spring	
120	YGFX0052291B	Pushout Plate Spring	

Ref. No.	Part No.	Part Name & Description	Remarks
131	YGFX233527	Stocker Tray Housing L	
132	YGFX9992609	Stocker Tray	
150	XUC15V	Retaining Ring	
151	XUC2V	E-Ring	
152	YEJE01044	Retaining Ring	
154	XQN2+A2FX	Screw, M2x2mm	
155	XQN2+C2FX	Screw, M2x2mm	
156	XSB2+3FX	Bind Screw, M2x3mm	
157	XSB2+4FX	Bind Screw, M2x4mm	
158	XYN2+C4FX	Screw w/Washer, M2x4mm	
159	XYN2+C5FX	Screw w/Washer, M2x5mm	
160	XYN2+C6FX	Screw w/Washer, M2x6mm	
161	YEJS02037A	Tapping Screw	
162	YGJS05050	Thin Head Screw w/Washer	
163	YGJS05051	Thin Head Screw w/Washer	
164	YGJS05063	Screw w/Washer	
165	YEJS06097A	Screw	
166	YEJS06246	Super Thin Head Screw	
168	YEJT03129	Tapping Screw	

# 12 EXPLODED VIEW (CD Deck-1)



# 13 EXPLODED VIEW (CD Deck-2)



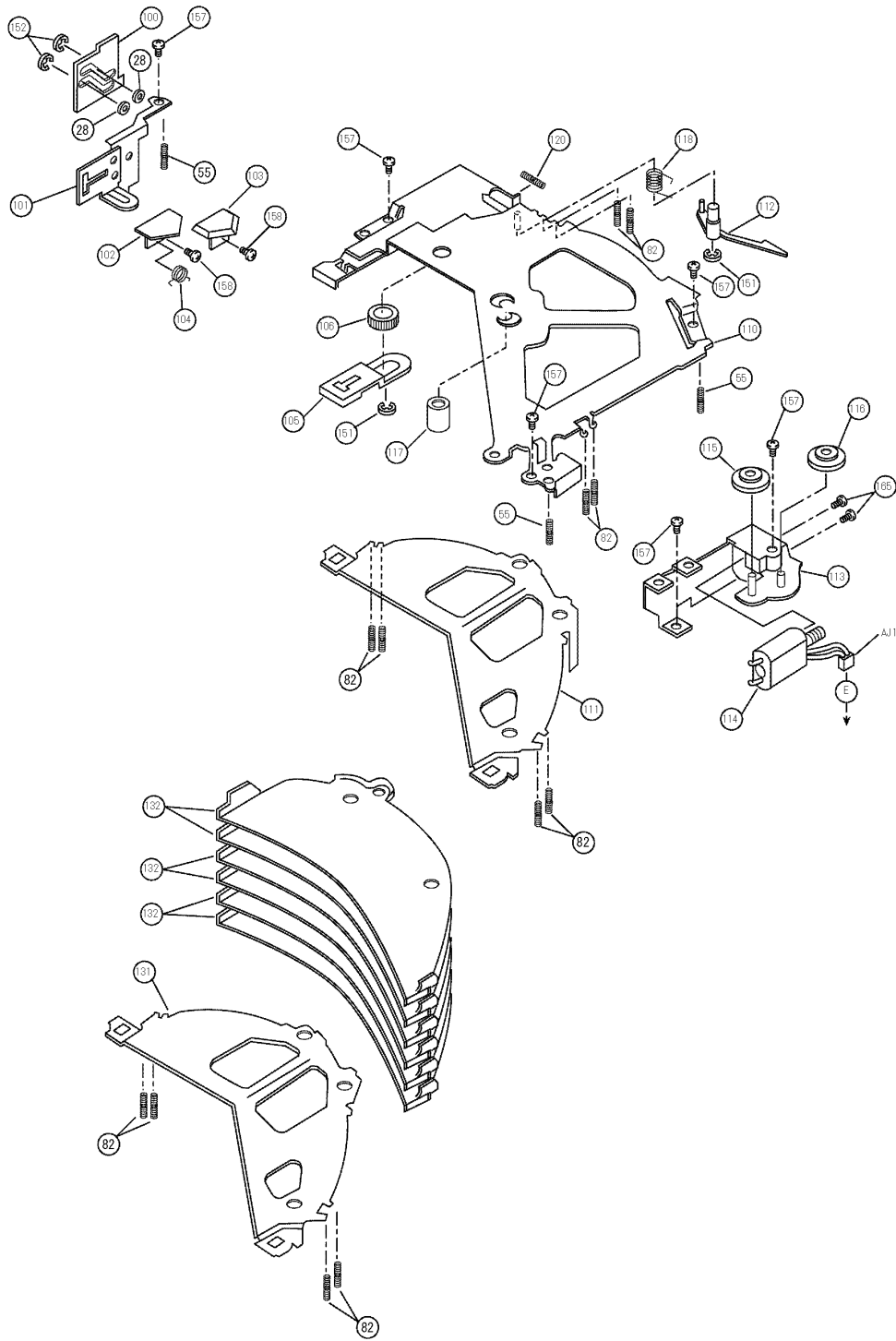
# 14 EXPLODED VIEW (CD Deck-3)

2

2

1

1

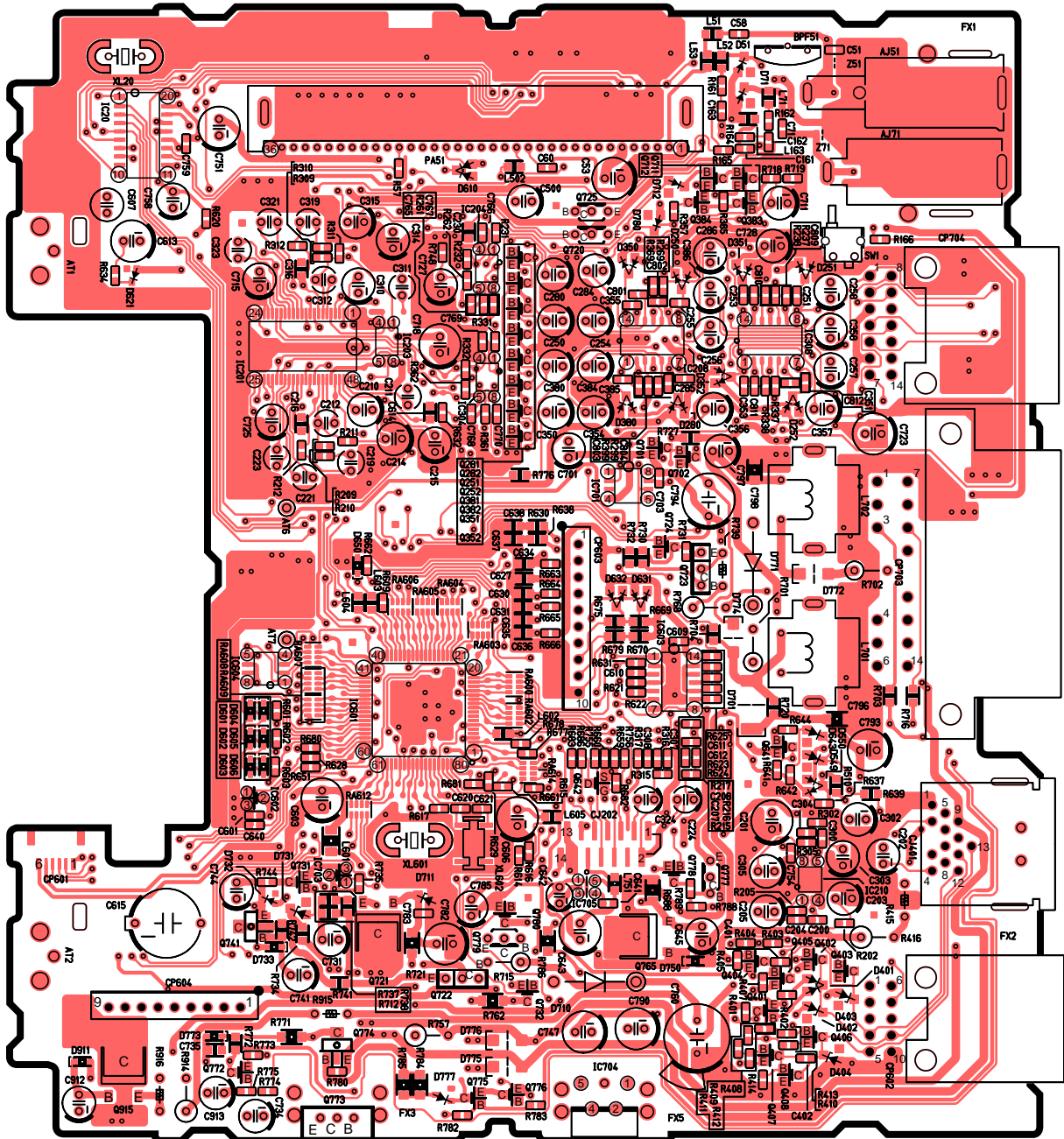


YGFD13192  
2002. 8. 26

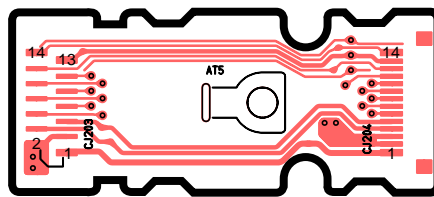


# 15 WIRING DIAGRAM

## 15.1. Main/Connector Block (Top View)

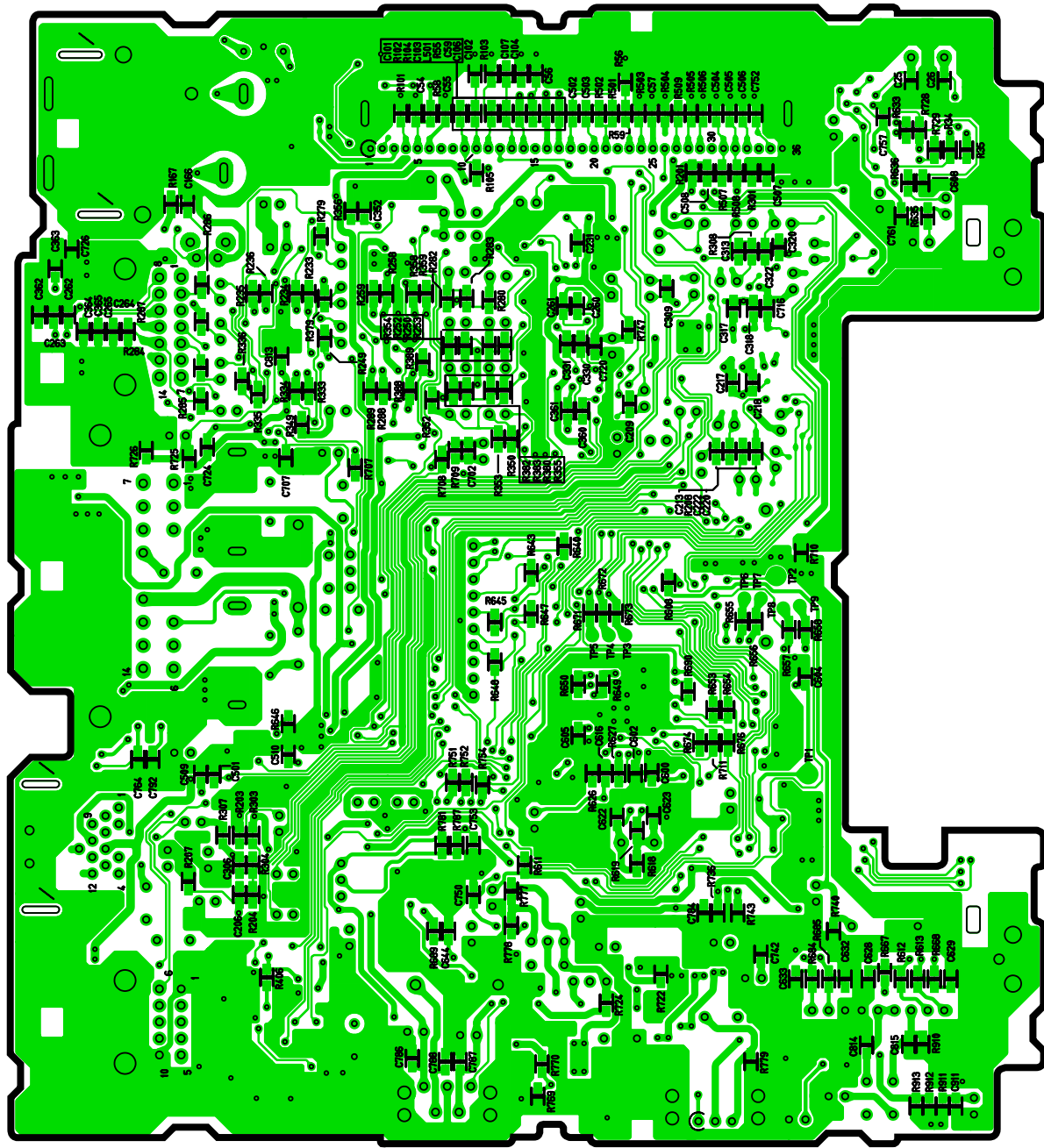


[E-6893Ba] [Top View]

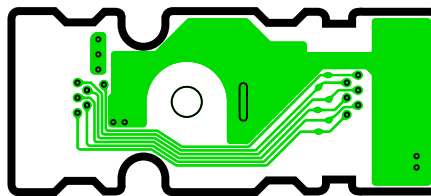


[E-6893Bb] [Top View]

### 15.2. Main/Connector Block (Bottom View)

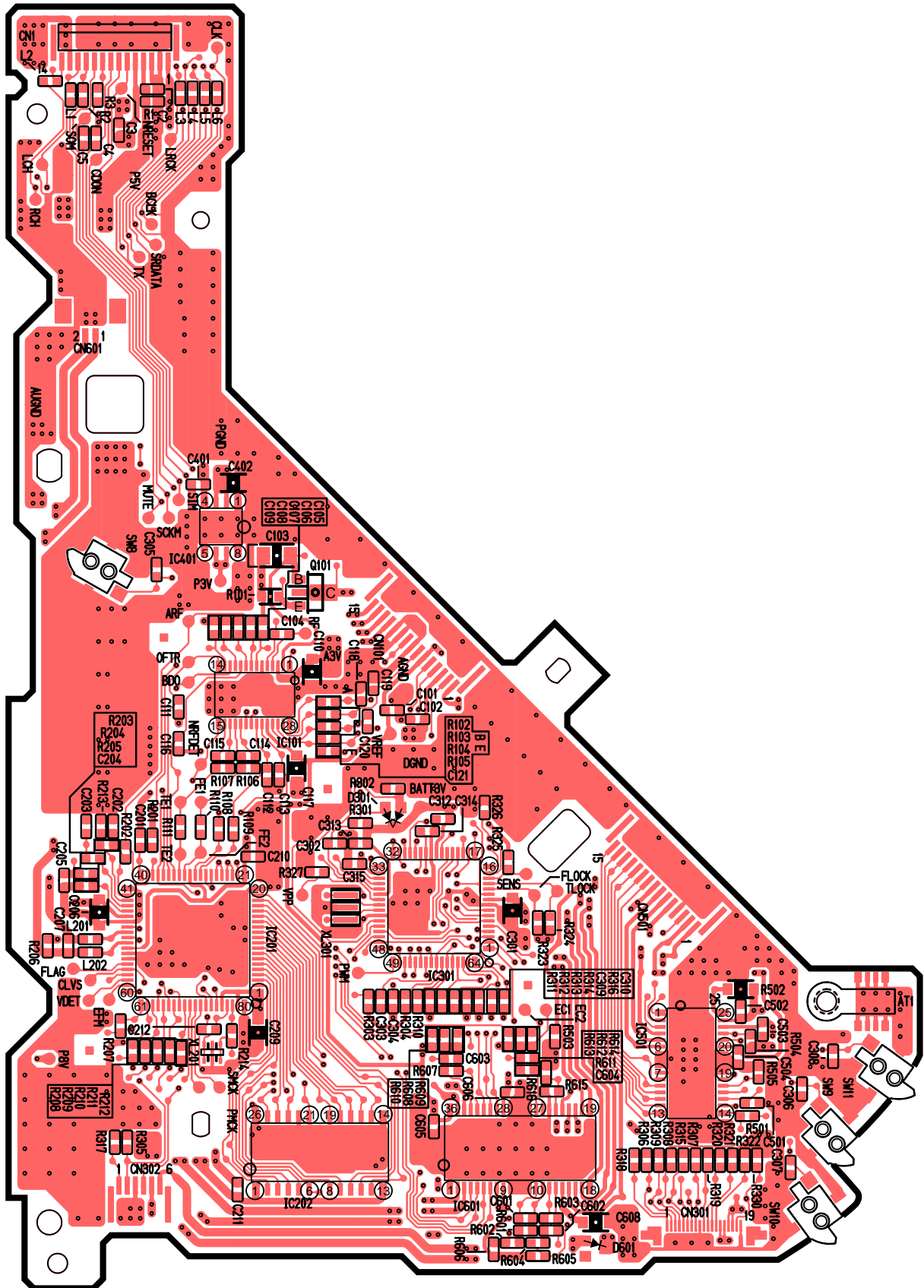


[E-6893Ba] [Bottom View]



[E-6893Bb] [Bottom View]

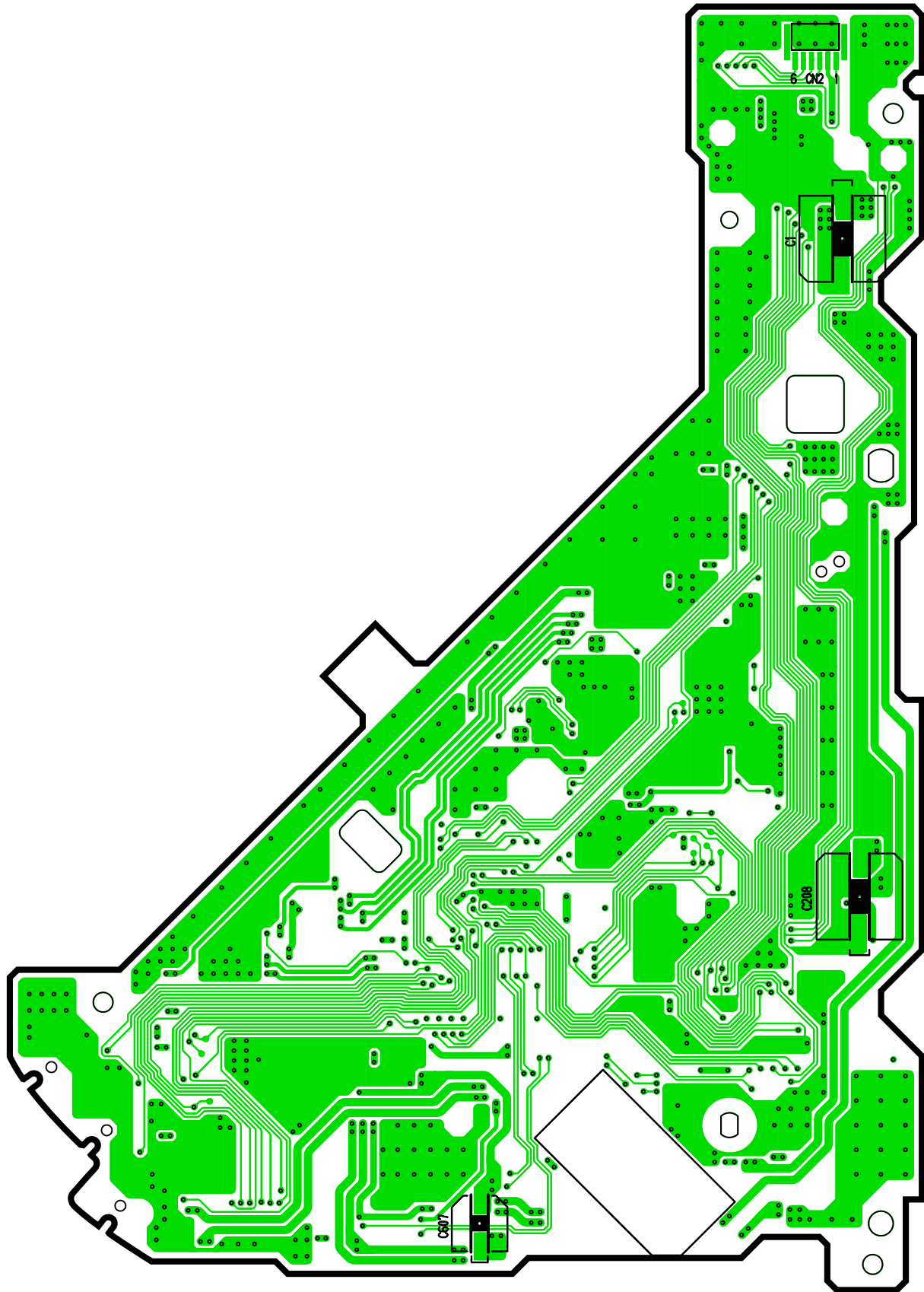
### 15.3. CD Servo Block (Top View)



[E-9060A] [Top View]

YGFD13192 DECK P.C.B

### 15.4. CD Servo Block (Bottom View)

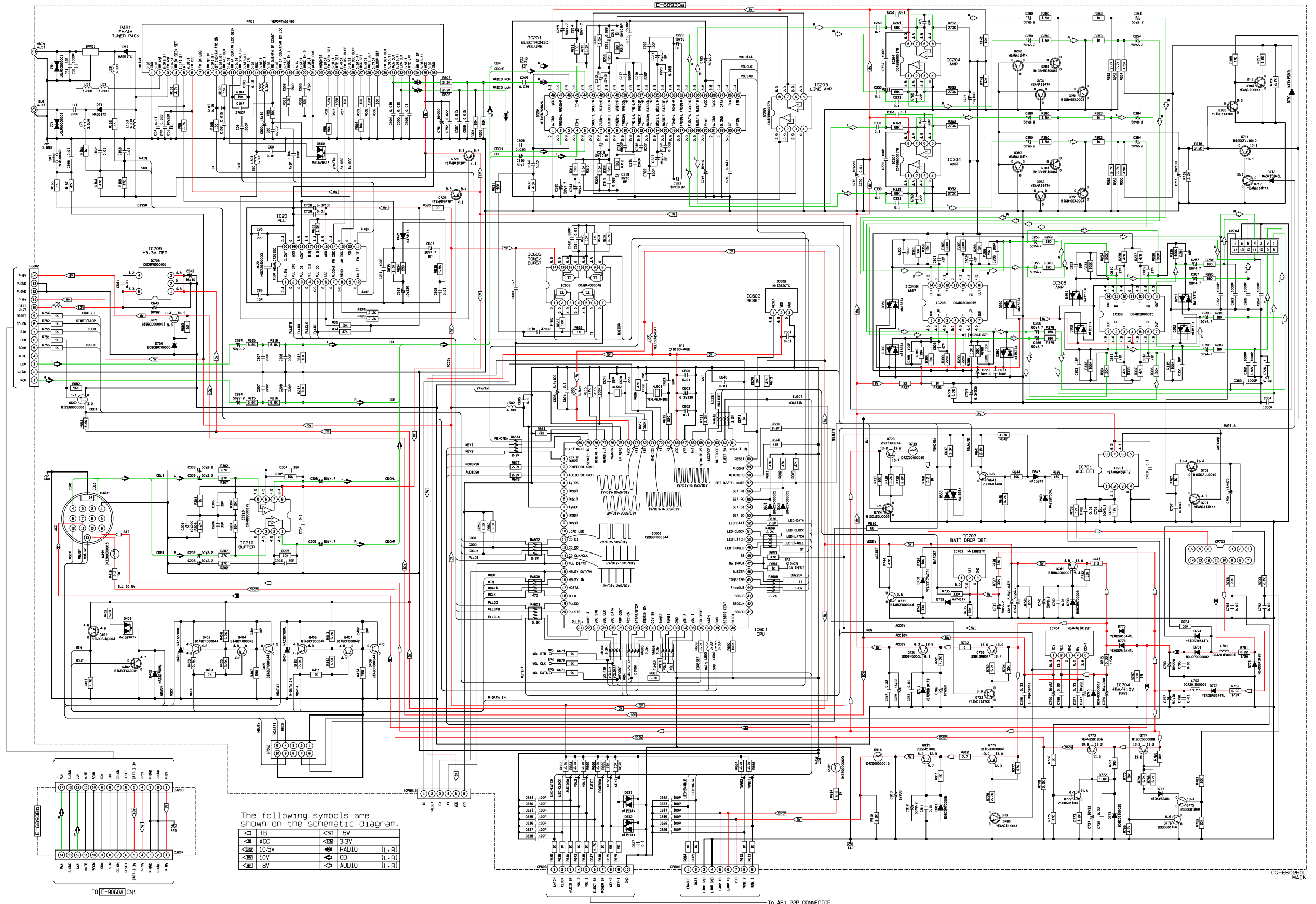


[E-9060A] [Bottom View]

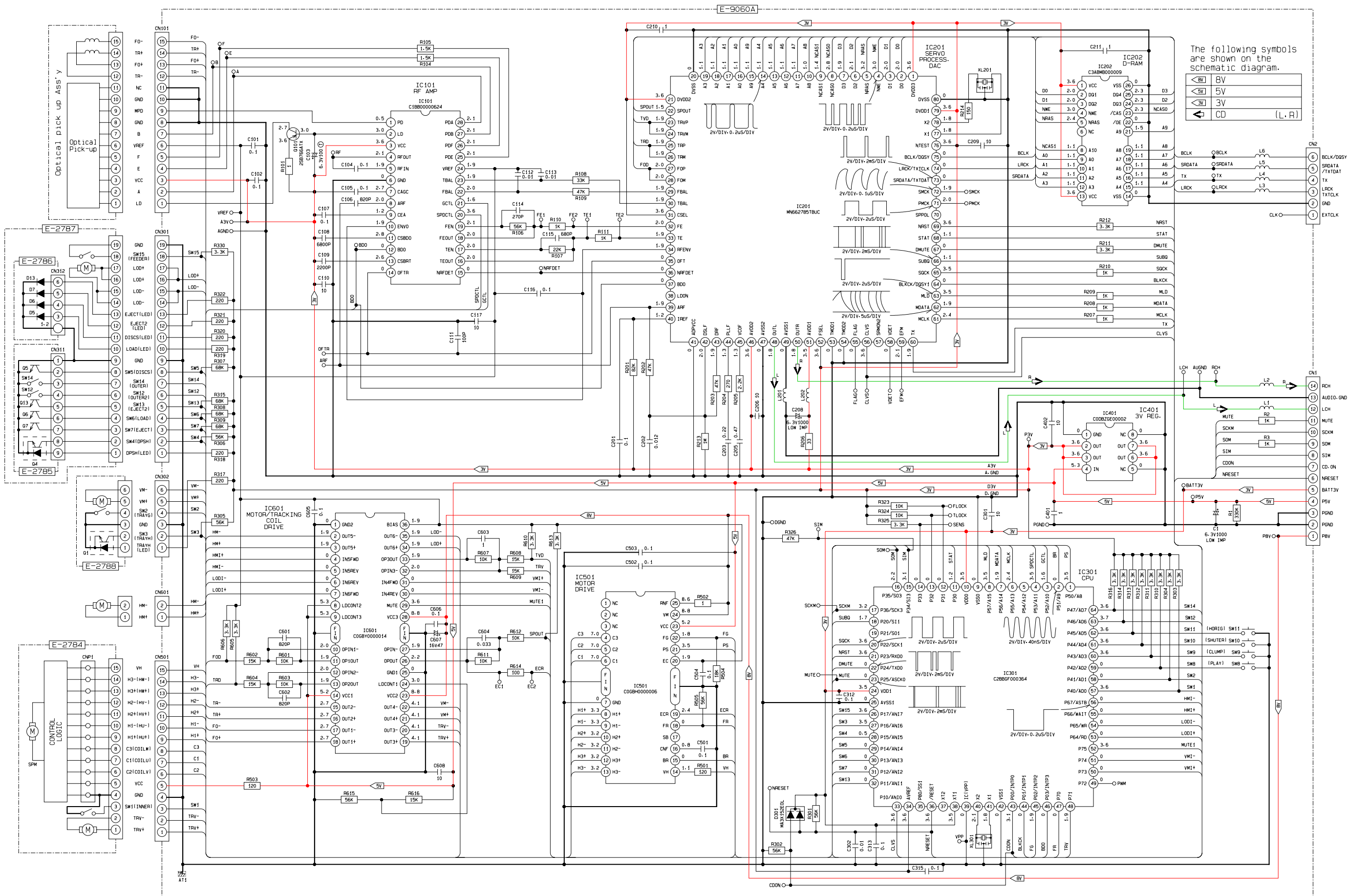
YGFD13192 DECK P.C.B

# 16 SCHEMATIC DIAGRAM

## 16.1. Main/Connector Block



# 16.2. CD Servo Block



The following symbols are shown on the schematic diagram.

- 5V
- 3V
- CD (L, R)

To E-6893Bb C1204