

# Service Manual

## AUTOMOTIVE ELECTRONICS



### MITSUBISHI CX-CB0910FA

6-Disc CD Changer

MITSUBISHI PART No. : A9000RCX01

ID CODE : P101

VEHICLE : UNIVERSAL

DESTINATION : North America

PRODUCED AFTER : Aug., 2001



### Specification\*

**General**

Power Supply DC 12V (11V - 16V),  
Test Voltage 13.2V  
Negative Ground

Current Consumption Less than 1.0A

Output Voltage 1V (1kHz, 0dB)

**CD Player**

Total Harmonic Distortion 0.01% (1kHz)

Channel Separation 80dB (1kHz)

Frequency Response 10 - 20,000Hz

Quantization 16-bit linear  
Wow and Flutter Below measurable limits  
Signal to Noise Ratio 96dB (IHF-A)

Dimensions\*\* (W×H×D) 178 × 50 × 175mm

Weight\*\* 1.3kg

\* Specifications and the design are subject to possible modification without notice due to improvements.

\*\* Dimensions and Weight shown are approximate.

# CONTENTS

	Page		Page
1 FEATURES .....	2	10 CD DISC CENTERING ALIGNMENT .....	12
2 LASER PRODUCTS .....	2	11 REPLACEMENT PARTS LIST .....	13
3 NAME AND FUNCTION OF EACH PARTS .....	3	12 EXPLODED VIEW (Unit) .....	16
4 REAR VIEW AND CONNECTOR .....	3	13 CD CHANGER PARTS LIST .....	17
5 WIRING CONNECTION .....	4	14 EXPLODED VIEW (CD Deck-1) .....	20
6 BLOCK DIAGRAM (Main Block) .....	5	15 EXPLODED VIEW (CD Deck-2) .....	21
7 BLOCK DIAGRAM ( CD Servo Block) .....	6	16 EXPLODED VIEW (CD Deck-3) .....	22
8 TERMINALS DESCRIPTION .....	7	17 WIRING DIAGRAM .....	23
9 IC BLOCK DIAGRAM .....	10	18 SCHEMATIC DIAGRAM .....	27

## 1 FEATURES

- IDC series CD changer deck (6-dics slots).
- Shock Proof Memory.
- MITSUBISHI M-BUS control.

## 2 LASER PRODUCTS

**Do not take apart this unit or attempt to make any changes yourself.**

This unit is very intricate that uses a laser pickup to retrieve information from the surface of compact discs. The laser is carefully shielded so that its rays remain inside the cabinet. Therefore, never try to disassemble the player or alter any of its parts since you may be exposed to laser rays and dangerous voltages.

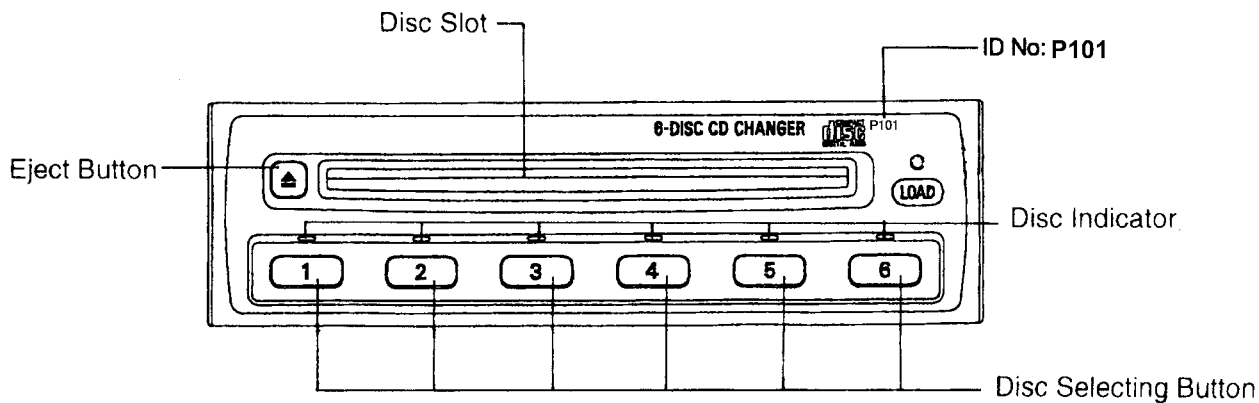
**Laser products :**

Wave length	780nm
Laser power	No hazardous radiation is emitted with safety protection.

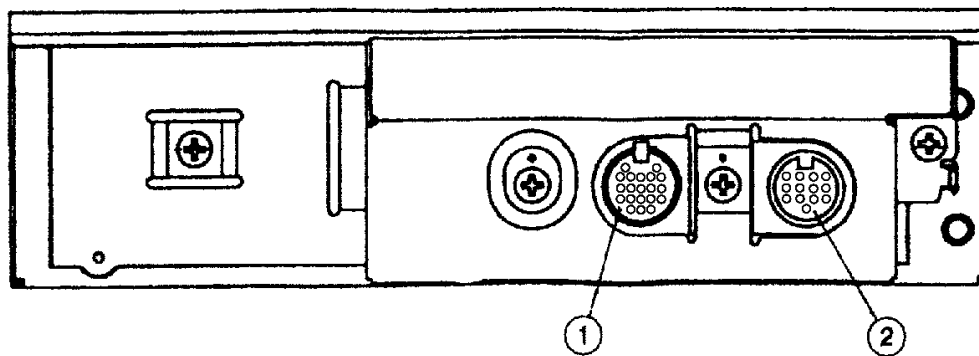
**Caution**

This product utilizes a laser. Use of controls or adjustments or performance of procedures other than those specified herein may result in hazardous radiation exposure.

### 3 NAME AND FUNCTION OF EACH PARTS



### 4 REAR VIEW AND CONNECTOR



①

CN703 20Pin Connector

1.	Signal Ground	(S. GND)
2.	Audio, Left Output	(L ch)
3.	NC	(NC)
4.	Audio, Right Output	(R ch)
5.	NC	(NC)
6.	NAVI Voice Input	(NAVI VOICE)
7.	NC	(NC)
8.	Video/ G+Sync Signal	(VIDEO/ G+SYNC)
9.	NC	(NC)
10.	Illumination Voltage	(ILL)
11.	M-BUS Busy	(M BUSY)
12.	M-BUS Serial Clock	(M SCK)
13.	M-BUS Serial Data	(M DATA)
14.	NC	(NC)
15.	RGB(R)/ Sync Signal	(R SYNC)
16.	NC	(NC)
17.	RGB(R)/ Sync Signal	(B SYNC)
18.	FM Detect, ACC⊕	(FM DETECT⊕ACC)
19.	Power Supply, Buttery	(⊕B)
20.	NC	(NC)

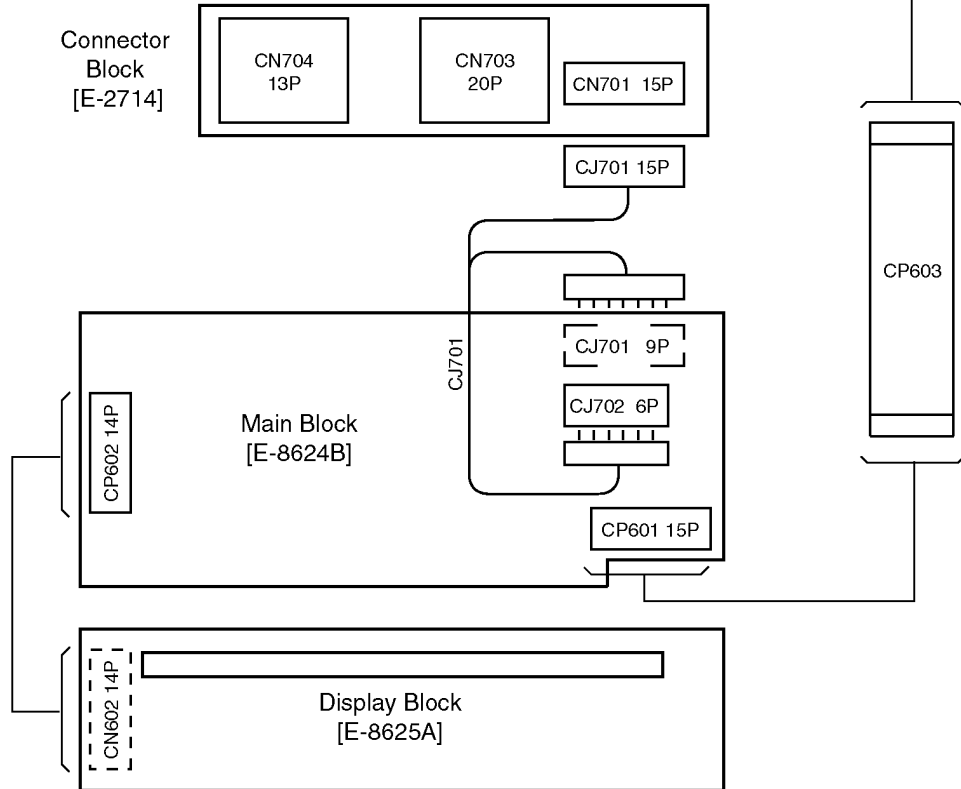
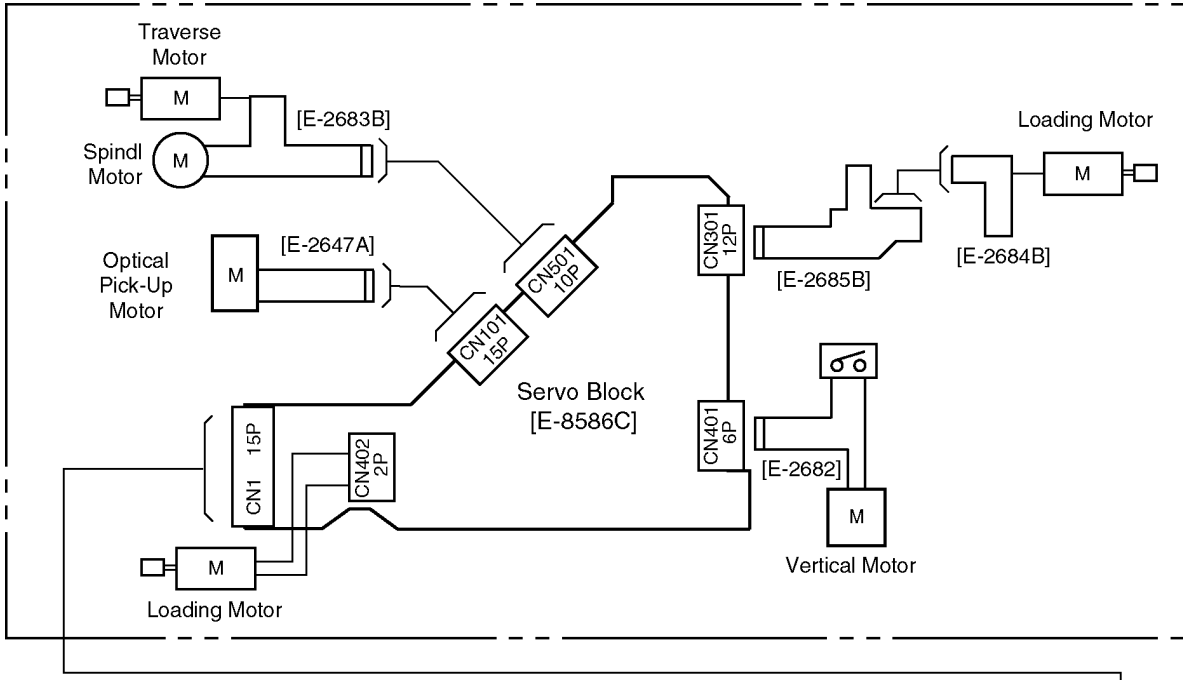
②

CN704 13Pin DIN Connector

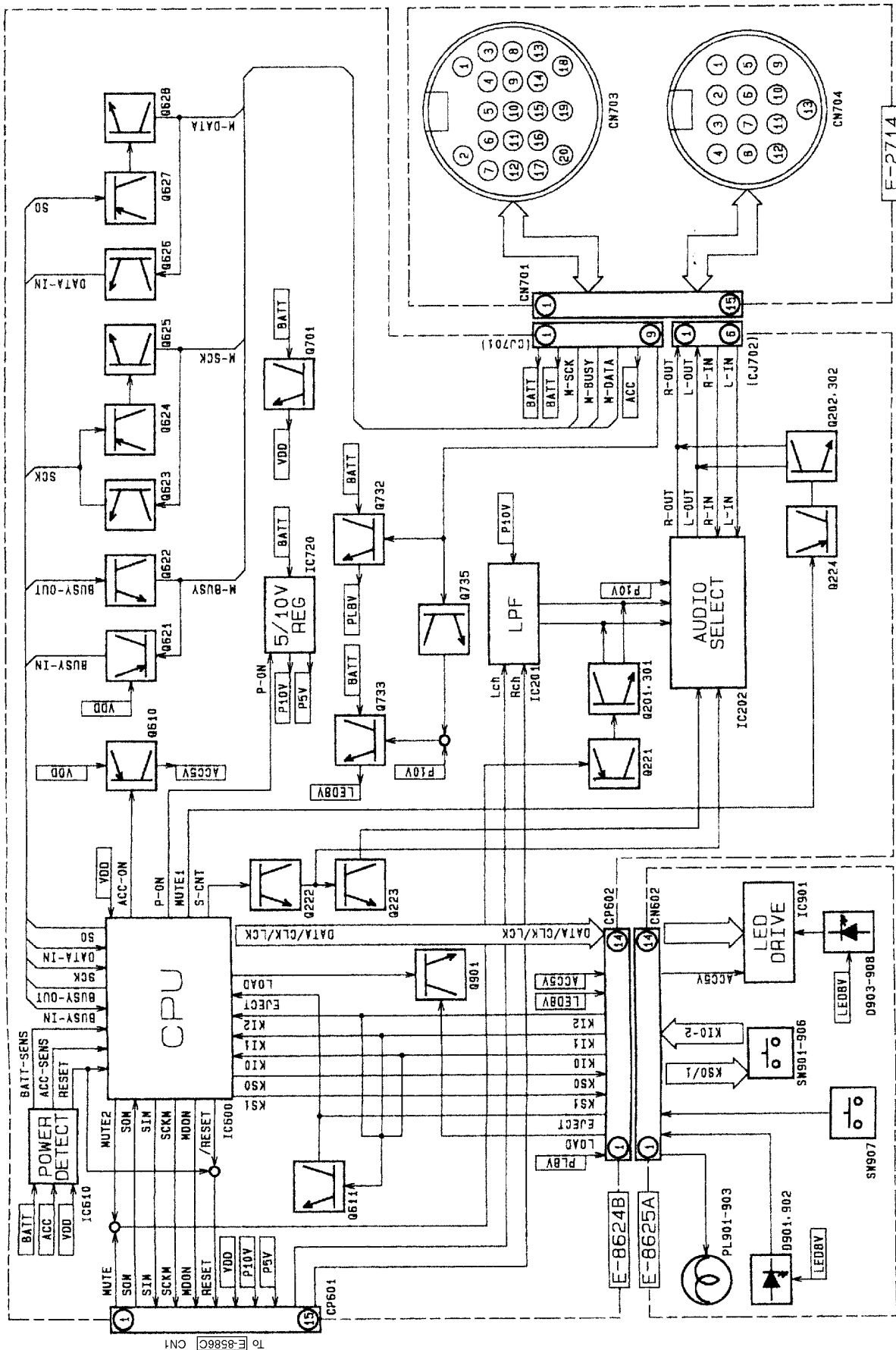
1.	Signal Ground	(S. GND)
2.	Audio, Left	(L ch)
3.	NAVI Voice Input	(NAVI VOICE)
4.	Audio, Right	(R ch)
5.	RGB(R)/ Sync Signal	(R SYNC)
6.	RGB(R)/ Sync Signal	(B SYNC)
7.	FM Detect, ACC⊕	(FM DETECT⊕ACC)
8.	Video/ G+Sync Signal	(VIDEO/ G+SYNC)
9.	Power supply, Battery	(⊕B)
10.	Illumination Voltage	(ILL)
11.	M-BUS Busy	(M BUSY)
12.	M-BUS Serial Clock	(M SCK)
13.	M-BUS Serial Data	(M DATA)

# 5 WIRING CONNECTION

## CD Changer DeckBlock

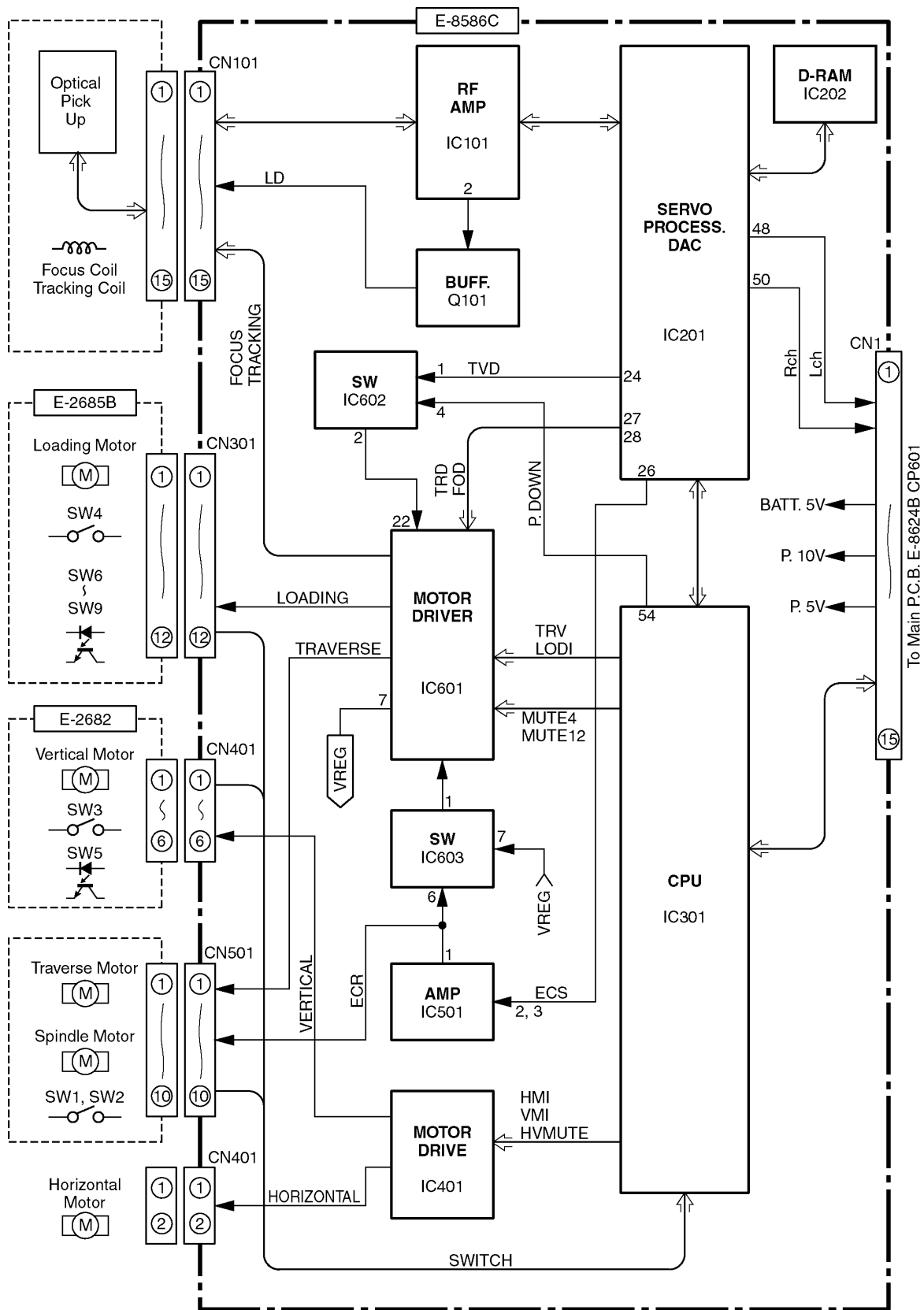


# 6 BLOCK DIAGRAM (Main Block)



CX-CB0910FA

# 7 BLOCK DIAGRAM ( CD Servo Block)



# 8 TERMINALS DESCRIPTION

## 8.1. Main Block

### ■ IC600 C2BBFE000102

Pin No.	Signal	Description	I/O	Vol. (V)
1	CLK	LED Drive Clock	O	0
2	LCK	Data Loading Clock	O	0
3	P16/ANI16	(Connecting to Ground)	O	0
4	AVss	Ground	-	0
5	P130/ANO0	(Connecting to Ground)	O	0
6	P131/ANO1	(Connecting to Ground)	O	0
7	AVref1	Reference Voltage (for A/D Converter)	-	5.2
8	P70/SI2/RxD	(Connecting to Ground)	-	0
9	ACC-ON	ACC-ON Signal (to LED Driver)	O	0
10	P ON	Power ON Signal	O	5.3
11	SOM (IN)	M-BUS Busy Input	I	4.7
12	SIM (OUT)	M-BUS Data	IO	0
13	SCKM	M-BUS Clock	IO	5.3
14	P23/STB (NC)	-	-	-
15	M-BUSY.OUT	M-BUS Busy Output	O	0
16	M-BUSY.IN	Serial Data Input (for CD Deck)	I	0
17	M-BUSY.SO	Serial Data Output (for CD Deck)	O	5.3
18	M-BUSY.SCK	Serial Clock (for CD Deck CPU)	O	5.3
19	/MDON	CD ON Signal (for CD Deck CPU)	O	5.3
20	/RESET	Reset Output (for CD Deck CPU)	O	5.3
21	P42/AD2	(Connecting to Ground)	I	0
22	P43/AD3	(Connecting to Ground)	I	0
23	P44/AD4	(Connecting to Ground)	I	0
24	P45/AD5	(Connecting to Ground)	I	0
25	KS1	Key Scan Output 1	O	0
26	KS0	Key Scan Output 0	O	0
27	KI2	Key Return Input 2	I	0
28	KI1	Key Return Input 1	I	0
29	KI0	Key Return Input 0	I	0
30	LOAD-LED	Door LED ON/OFF	O	0
31	P54/A12	(Connecting to Ground)	I	0
32	P55/A13	(Connecting to Ground)	I	0
33	Vss	Ground	-	0
34	MUTE-1	Mute Control 1	O	0
35	P57/A15	(Connecting to Ground)	I	0
36	S.CONT	Audio Signal select	O	0
37	P61	(Connecting to Ground)	I	0
38	P62	(Connecting to Ground)	I	0
39	P63	(Connecting to Ground)	I	0
40	P64/RD	(Connecting to Ground)	I	0

Pin No.	Signal	Description	I/O	Vol. (V)
41	P65/WD	(Connecting to Ground)	I	0
42	P66/WAIT	(Connecting to Ground)	I	0
43	P67/ASTB	(Connecting to Ground)	I	0
44	P30/TO0	(Connecting to Ground)	I	0
45	MUTE-2	Mute Control 2 (for CD Changer)	O	0
46	P32/TO2	(Connecting to Ground)	I	0
47	P33/TI1	(Connecting to Ground)	I	0
48	P34/TI2	(Connecting to Ground)	I	0
49	P35/PCL	(Connecting to Ground)	I	0
50	P36/BUZ	(Connecting to Ground)	I	0
51	P37	(Connecting to Ground)	I	0
52	P120/RTP0	(Connecting to Ground)	I	0
53	P121/RTP1	(Connecting to Ground)	I	0
54	P122/RTP2	(Connecting to Ground)	I	0
55	P123/RTP3	(Connecting to Ground)	I	0
56	TX (NC)	-	-	-
57	RX (NC)	-	-	-
58	P126/RTP6	(Connecting to Ground)	I	0
59	P127/RTP7	(Connecting to Ground)	I	0
60	RESET	Reset	I	5.2
61	M-DATA.IN	M-BUS Data Input	I	5.3
62	BATT-SENS	Battery Voltage Detect	I	5.3
63	ACC-SENS	ACC Voltage Detect	I	5.2
64	EJECT	EJECT Key	I	0
65	P04/INTP4	(Connecting to Ground)	I	0
66	P05/INTP5	(Connecting to Ground)	I	0
67	P06/INTP6	(Connecting to Ground)	I	0
68	VDD	+5V Power Supply	-	5.3
69	X2	Crystal Oscillator	-	3.0
70	X1	Crystal Oscillator	I	2.5
71	IC	(Connecting to Ground)	-	0
72	XT2 (NC)	-	-	-
73	XT1/P07	(Connecting to Ground)	I	0
74	AVDD	+5V Power Supply (for A/D Converter)	-	5.2
75	AVref0	Reference Voltage (for A/D Converter)	-	5.2
76	P10/ANI0	(Connecting to Ground)	-	0
77	P11/ANI1	(Connecting to Ground)	-	0
78	P12/ANI2	(Connecting to Ground)	-	0
79	P13/ANI3	(Connecting to Ground)	-	0
80	DATA	LED Driver Data Output	O	0

## 8.2. CD Servo Block

IC201 : MN662783RPW

Pin No.	Port	Description	I/O	(V)
1	VDD	+5V power supply	-	5.0
2	D0	D-RAM data	I/O	2.3
3	D1	D-RAM data	I/O	1.8
4	/WE	D-RAM data write	O	4.9
5	/RAS	D-RAM row address strobe	O	3.4
6	D2	D-RAM data	I/O	0.8
7	D3	D-RAM data	I/O	0
8	/CAS0	D-RAM column address strobe	O	3.9
9	/CAS1	D-RAM column address strobe	O	0
10	A8	D-RAM address	O	0.6
11	A7	D-RAM address	O	1.1
12	A6	D-RAM address	O	0.7
13	A5	D-RAM address	O	0
14	A4	D-RAM address	O	1.1
15	A9	D-RAM address	O	0.4
16-18	A0	D-RAM address	O	1.0
19	A3	D-RAM address	O	0
20	VSS2	Ground	-	0
21	VDD2	+5V power supply	-	5.0
22	PWMCK(NC)	-	-	-
23	TRVSTP(NC)	-	-	-
24	TVD	Traverse motor control	O	2.5
25	PC	Not used	-	-
26	ECS	Spindle motor control	O	2.4
27	TRD	Tracking coil drive	O	2.5
28	FOD	Focus coil drive	O	2.4
29	FBAL	Focus balance	O	1.9
30	TBAL	Tracking balance	O	3.0
31	VREF	Reference voltage	I	2.5
32	FE	Focus error	I	2.5
33	TE	Tracking error	I	2.5
34	RFENV	RF envelope	I	2.5
35	OFT	Off track signal	I	0
36	/RFDET	RF detecting signal	I	0
37	BDO	Drop-out signal	I	0
38	LDON	Laser on signal	O	4.5
39	ARF	RF signal	I	2.5
40	IREF	Reference current input	I	1.2
41	DRF	Bias for DSL	I	2.4
42	DSLFL	Loop filter for DSL	I/O	2.5
43	DSLFL2	Loop filter for DSL	I/O	2.2
44	PLLF	Loop filter for PLL	I/O	1.4
45	VCOF(NC)	-	-	-
46	AVDD2	+5V power supply	-	5.0
47	AVSS2	Ground	-	0
48	OUTL	L channel output	O	2.3
49	AVSS1	Ground	-	0
50	OUTR	R channel output	O	2.3
51	AVDD1	+5V power supply	-	4.7
52-54	-	(Connecting to ground)	-	0
55	FLAG	Flag output	O	0
56	FCLK	Frame clock	O	0
57-59	NC	-	-	-
60	TX(NC)	-	-	-
61	MCLK	Clock for I/F command	I	1.0
62	MDATA	Date for I/F command	I	3.1
63	MLD	I/F command load	I	5.0
64	BLKCK	Subcode block clock	O	0
65	SQCK	Ext.clock for sub code-Q	I	5.0
66	SUBQ	Code for sub. code-Q	O	3.8
67	DMUTE	Mute input	I	0
68	STAT	Status signal	O	5.0

69	/RST	Reset input	I	5.0
70	CSEL	(Connecting to ground)	-	0
71	PMCK	Clock output	O	2.5
72	SMCK	Clock output	O	2.5
73	SUBC	Serial data of sub code	O	0
74	SBCK	Shift clock for SUBC	I	0.6
75	/CLDCK(NC)	-	-	-
76	/TEST	(Connecting to VDD)	-	5.0
77	X1	Crystal oscillator	-	0.4
78	X2	Crystal oscillator	-	3.2
79	VDD1	+5V power supply	-	5.0
80	VSS1	Ground	-	0

IC301 : MNS73260ACBL

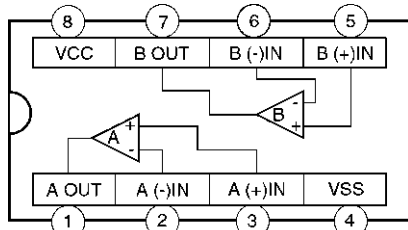
Pin No.	Port	Description	I/O	(V)
1	VDD	+5V power supply	-	5.0
2	OSC2	Crystal oscillator	-	2.2
3	OSC1	Crystal oscillator	-	2.1
4	VSS	Ground	-	0
5	XI	(Connecting to ground)	-	0
6	XO(NC)	-	-	-
7	CM	(Connecting to ground)	-	0
8	VREFH	Reference voltage	I	5.0
9	SW13	Shuter SW	I	4.9
10	SW12	Horizontal origin	I	4.9
11	SW11	Clump SW	I	0
12	SW10	Play SW	I	0
13	SW4	Shuter SW	I	4.9
14	SW3	Tray origin SW	I	0
15	SW2	Inner SW	I	4.8
16	SW1	Outer SW	I	4.9
17	VREFL	Reference voltage	I	0
18	/RESET	Reset input	I	4.9
19	-	(Ground pull-down)	-	0
20	SCKM	Clock for serial data	I	5.0
21	SIM	CD changer serial data	I	1.3
22	SOM	CD changer serial data	O	4.3
23	SQCK	Ext. clock for sub. code-Q	O	5.0
24	SUBQ	Code for sub. code-Q	I	1.6
25	NC	-	-	-
26	-	(Ground pull-down)	-	0
27	CD.ON	CD changer start/stop	I	5.0
28	NC	-	-	-
29	BLKCK	Sub. code block clock	I	0
30	P.ON	Power switch on	-	5.0
31	MUTE	Mute output	O	5.0
32	-	(Ground pull-down)	-	0
33	SENS	Servo status	O	0
34	CLVS	Servo status	O	5.0
35	FLOCK	Focus servo lock	O	0.2
36	TLOCK	Tracking servo lock	O	0
37	VMI	Horizontal motor control	O	2.5
38	HMI	Vertical motor control	O	0
39	HVMUTE	H/V motor mute	O	0
40-42	-	(Ground pull-down)	-	0
43	SW9	Disc-in (B) SW	I	0
44	SW8	Disc-in (L) SW	I	0
45	SW7	Disc-in (F) SW	I	0
46	SW6	Disc push SW	I	0
47	SW5	Tray hight SW	I	4.5
48	BDO	Drop-out signal	I	0
49	DQSY(NC)	-	-	-
50	/RST	Reset output	O	5.0
51	STAT	Status signal	I	2.1
52	DMUTE	Mute output	O	0



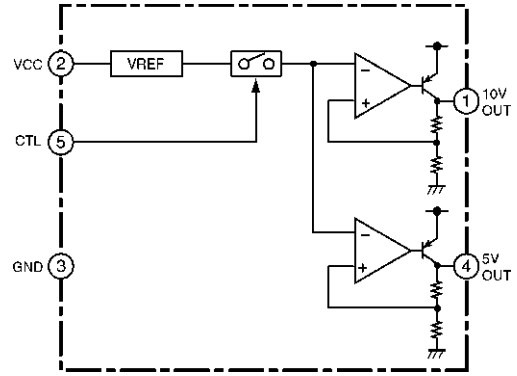
53	XE(NC)	-	-	-
54	P.DOWN	Power down signal	O	0
55	-	No connection	-	-
56	MLD	I/F command load	O	5.0
57	MDATA	Data for I/F command	O	3.1
58	MCLK	Clock for I/F command	O	4.1
59	SPMT	Spindle mute	O	5.0
60	MUTE12	Focus/Tracking mute	O	0
61	MUTE4	Loading motor mute	O	4.8
62	LDOI	Loading motor control	I/O	2.5
63	TRV	Forced traverse control	I/O	2.4
64	SYNC(NC)	-	-	-

# 9 IC BLOCK DIAGRAM

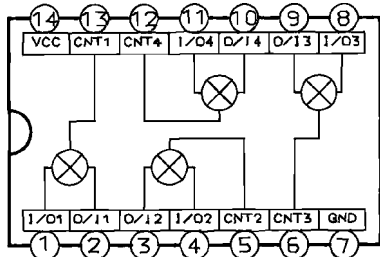
## 9.1. Main Block



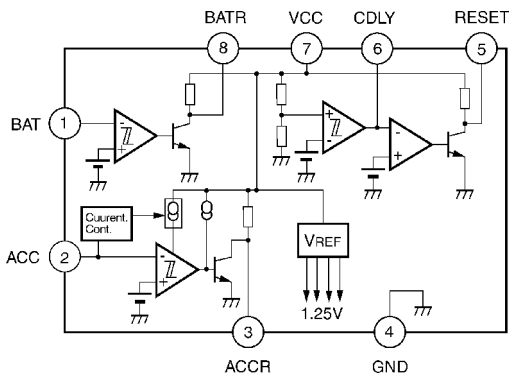
IC201 : YEAMM5218AFE



IC720 : YEAMA61W12ST

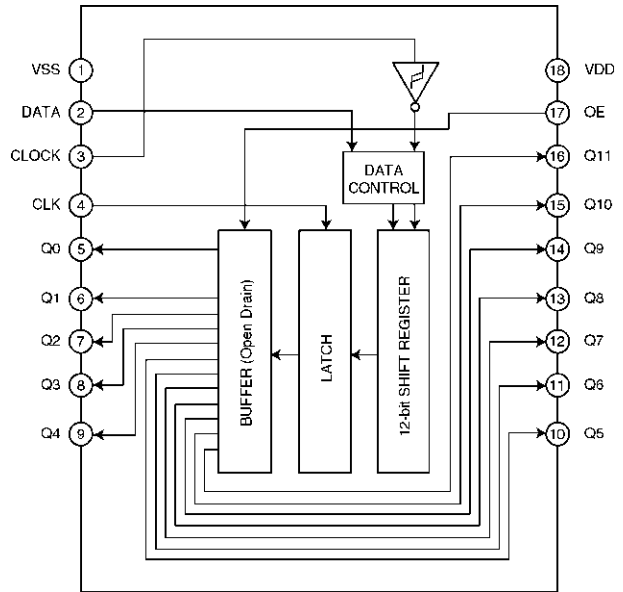


IC202 : COJBAS000030



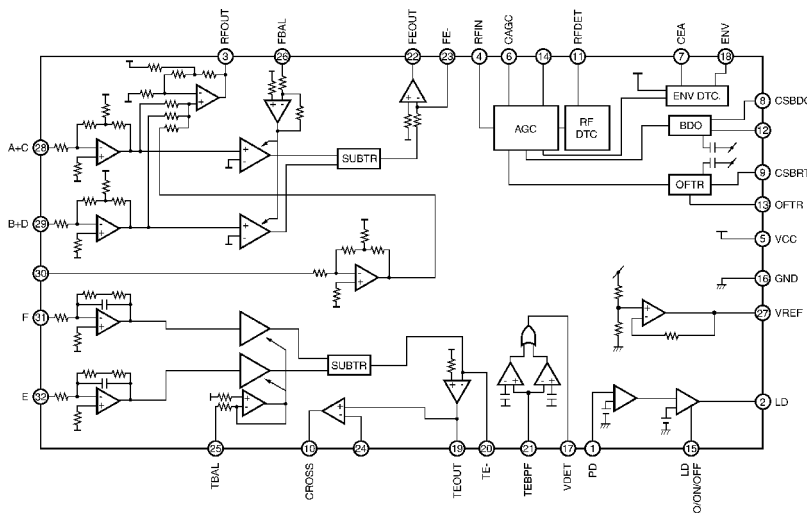
IC610 : AN8065SE1

## 9.2. Display Block

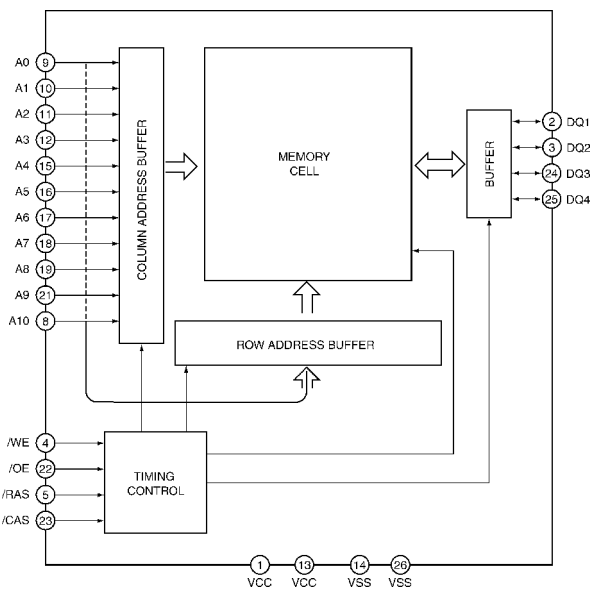


IC901 : COJBAQ000073

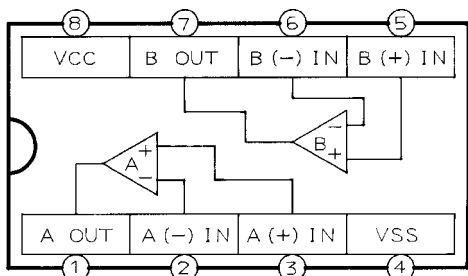
## 9.3. CD Servo Block



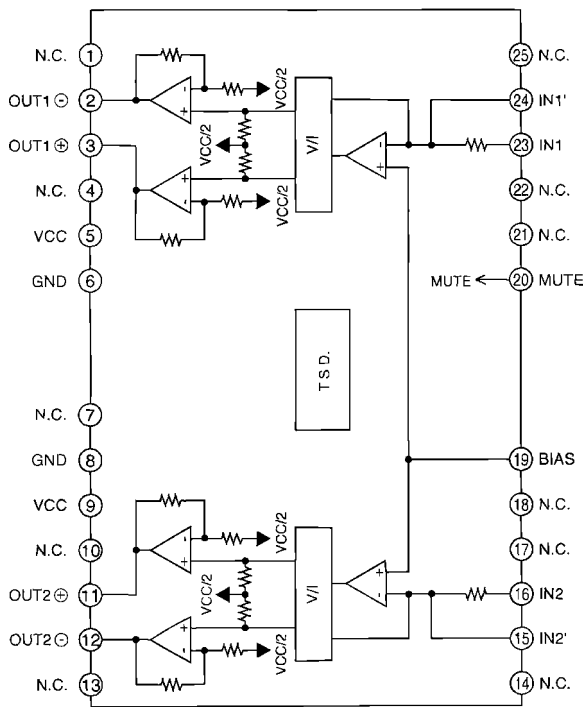
IC101 : C1BB00000173



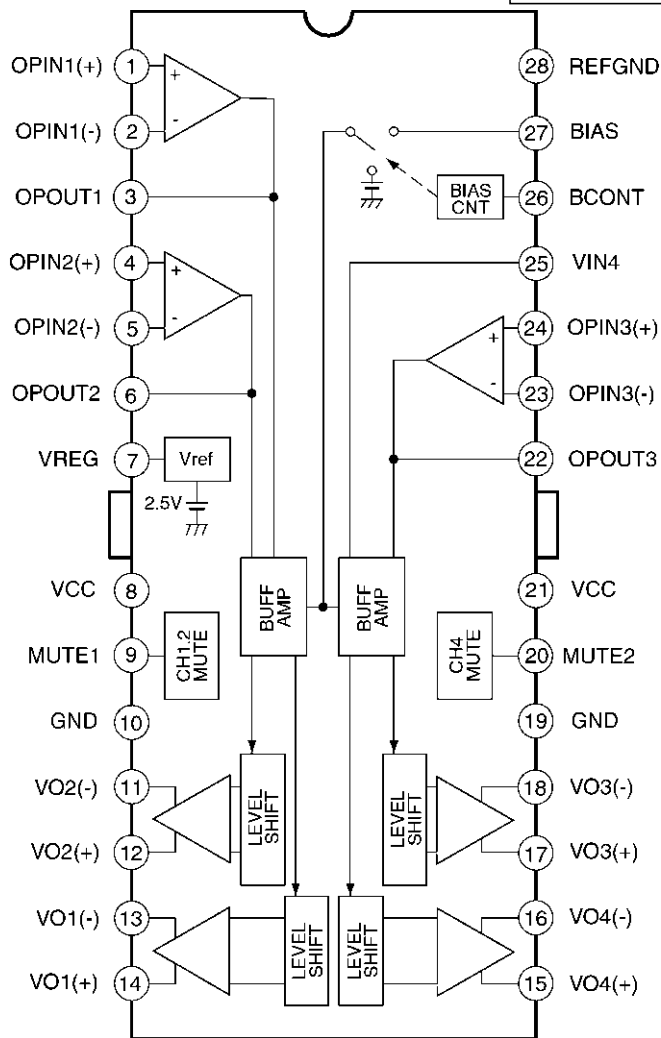
IC202 : C3ABMB000010



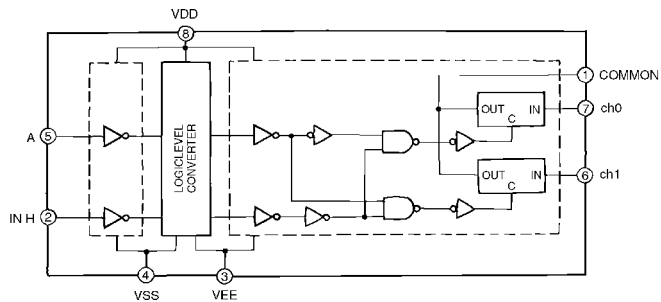
IC501 : YEAMPC358G2T



IC401 : YEAMBA6792FY



IC601 : C0GBY0000004



IC603 : YEAMT4W53FUL

# 10 CD DISC CENTERING ALIGNMENT

- This adjustment is for assuring that compact discs will be placed in the center of the turntable.

## <Adjustment Condition / Jig>

- Power Supply Voltage : 13.2V
- Test Disc : TCD-784M

## <Adjustment Procedures>

1. Attach the adjusting screw to the upper chassis (See Figure 1.).
2. Insert the test CD (TCD-784M) into the disc No.1 position and play it.
3. After checking whether the disc is centered on the turntable, turn the adjusting screw unit it is in the center.

## <Check Items>

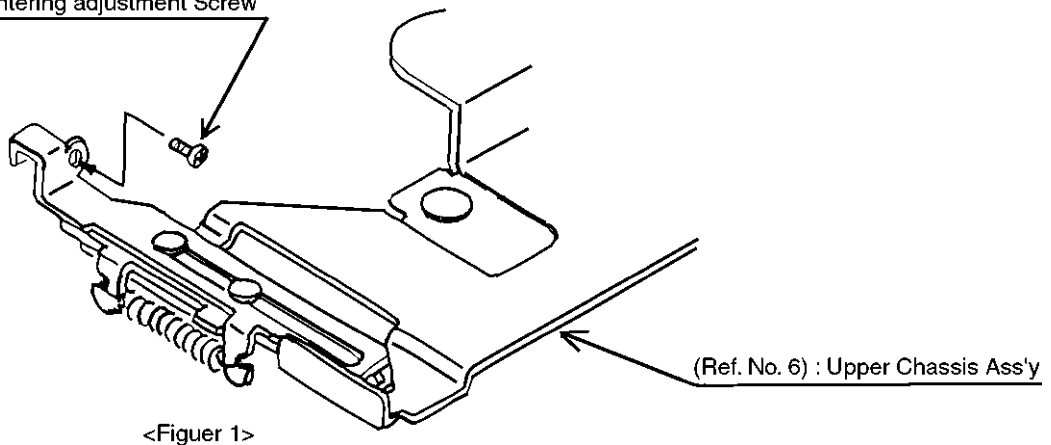
- Check that the disc is correctly centered.
- Check that the disc is securely clamped.
- Check that no abnormal noise is produced when clamping the disc.

## [Directions of Turning the Adjusting Screw]

- CD stops before its proper position : Turn the screw counterclockwise.
- CD overruns : Turn the screw clockwise.

4. After the adjustment, lock the screw.

(Ref. No.156) : Centering adjustment Screw



# 11 REPLACEMENT PARTS LIST

Notes :

1. Be sure to make your orders of replacement parts according to this list.
2. Important safety notice: Components, identified by  $\Delta$  mark have special characteristics important for safety. When replacing any of these components, use only manufacturer's specified parts.
3. Location keys in the remarks column indicates the general location of the parts shown in the exploded drawing, as in a road map.
4. The marking (RTL) indicates that Retention Time is limited for this item. After the discontinuation of assembly in production, the item will continue to be available for a specific period of time. The retention period of availability is dependent on the type of assembly, and in accordance with the laws governing part and product retention. After the end of this period, the assembly will no longer be available.
5. "MCC" marks in remarks column are indicated supply parts of Matsushita Communication Industrial Corp. of America (MCC).

Ref. No.	Part No.	Part Name & Description	Remarks
<b>[E-8624B] Main Block</b>			
<b>IC's and TRANSISTORS</b>			
IC201	YEAMM5218AFE	IC	
IC202	COJBAS000030	IC	
IC600	C2BBFE000102	IC	
IC610	AN8065SE1	IC	
IC720	YEAMA61W12ST	IC	
Q201	2SD1328STTX	Transistor	
Q202	2SD1328STTX	Transistor	
Q221	B1GDCFJJ0002	Transistor	
Q222	B1GBCFJJ0002	Transistor	
Q223	B1GBCFJJ0002	Transistor	
Q224	B1GDCFJJ0002	Transistor	
Q301	2SD1328STTX	Transistor	
Q302	2SD1328STTX	Transistor	
Q610	B1GDCFNN0002	Transistor	
Q611	B1GBCFJJ0002	Transistor	
Q621	B1GDCFJN0004	Transistor	
Q622	B1GBCFGG0001	Transistor	
Q623	B1ABCF000044	Transistor	
Q624	B1ABCF000042	Transistor	
Q625	B1ABCF000044	Transistor	
Q626	B1ABCF000044	Transistor	
Q627	B1ABCF000042	Transistor	
Q628	B1ABCF000044	Transistor	
Q701	2SD2249TA	Transistor	
Q732	YEAND1762EF	Transistor	
Q733	YEAND1760QRT	Transistor	
Q735	YEANC114YKX	Transistor	
Q901	YEANC114YKX	Transistor	
<b>DIODES</b>			
D202	MA153ATW	Diode	
D601	MA4X159A0L	Diode	
D602	MA152WATX	Diode	
D603	MA152WKTX	Diode	
D621	MA152WKTX	Diode	
D622	MAZ32700ML	Diode	
D623	MAZ32700ML	Diode	
D624	MAZ32700ML	Diode	
D641	MA8056LMHTX	Diode	
D642	MA8056LMHTX	Diode	

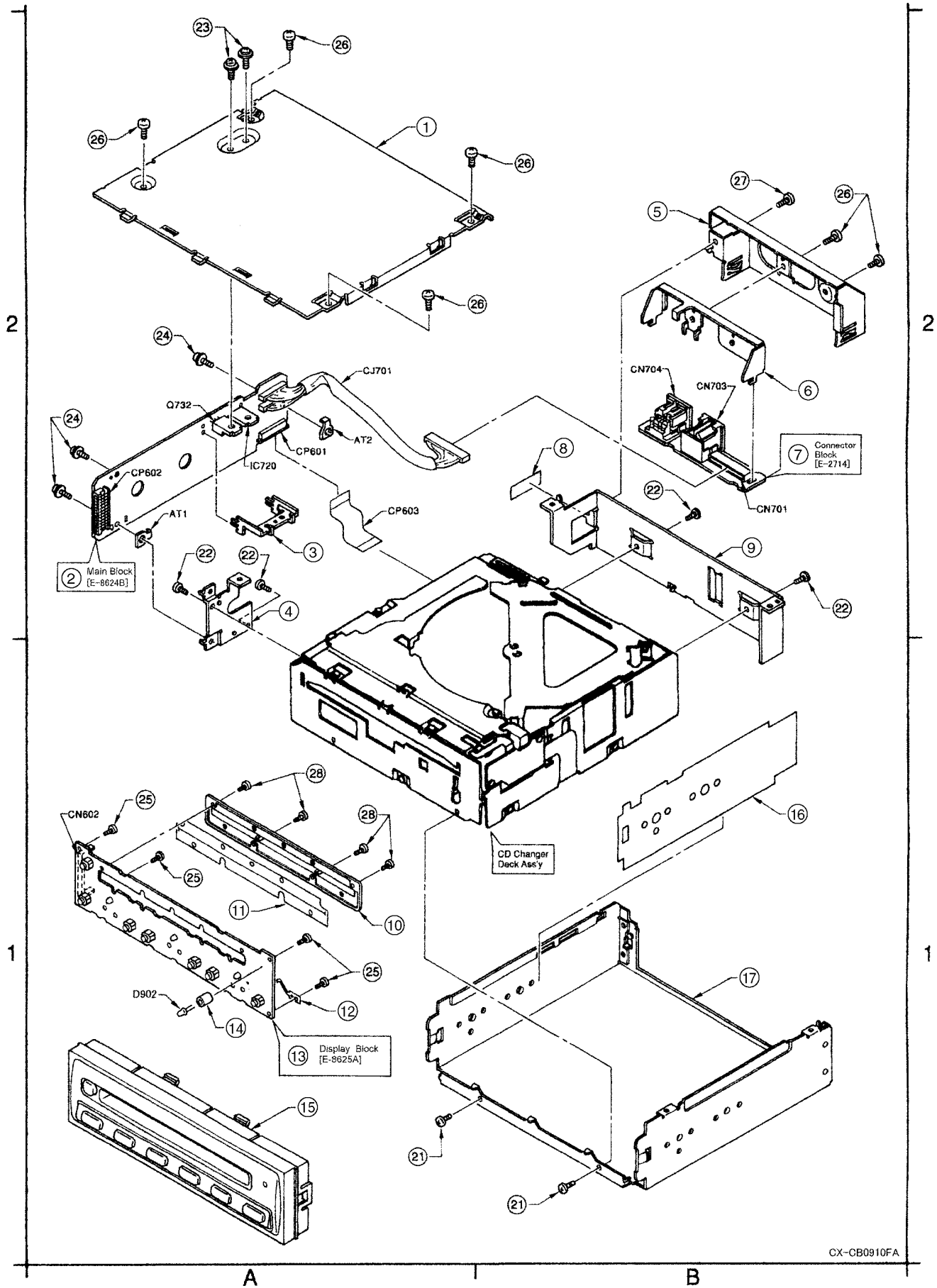
Ref. No.	Part No.	Part Name & Description	Remarks
D643	MA8056LMHTX	Diode	
D644	MA8056LMHTX	Diode	
D645	MA8056LMHTX	Diode	
D647	MA112TX	Diode	
D648	MA112TX	Diode	
D649	MA112TX	Diode	
D650	MA8082HTX	Diode	
D701	YEADNSQ03A02	Diode	
D702	YEADSR1544TL	Diode	
D703	YEADRD56M3T1	Diode	
D731	MA112TX	Diode	
D732	MA112TX	Diode	
D733	MA8082HTX	Diode	
<b>CAPACITORS</b>			
C201	YECUS1H222KX	Ceramic, 2200PF 50WV	
C202	ECEV1CG100GR	Electrolytic, 10 $\mu$ F 16WV	
C203	YECUS1H271JM	Ceramic, 270PF 50WV	
C204	YECUS1H681JM	Ceramic, 680PF 50WV	
C205	ECEV1CA100SR	Electrolytic, 10 $\mu$ F 16WV	
C207	ECEV1CA100SR	Electrolytic, 10 $\mu$ F 16WV	
C208	ECEV1CG100GR	Electrolytic, 10 $\mu$ F 16WV	
C209	ECEV1CA100SR	Electrolytic, 10 $\mu$ F 16WV	
C210	ECA0JM101I	Electrolytic, 100 $\mu$ F 6.3WV	
C211	ECEV1HA010SR	Electrolytic, 1 $\mu$ F 50WV	
C212	YECUS1H103KX	Ceramic, 0.01 $\mu$ F 50WV	
C213	ECEV1HA010SR	Electrolytic, 1 $\mu$ F 50WV	
C214	ECEA0JKA101I	Electrolytic, 100 $\mu$ F 6.3WV	
C301	YECUS1H222KX	Ceramic, 2200PF 50WV	
C302	ECEV1CG100GR	Electrolytic, 10 $\mu$ F 16WV	
C303	YECUS1H271JM	Ceramic, 270PF 50WV	
C304	YECUS1H681JM	Ceramic, 680PF 50WV	
C305	ECEV1CA100SR	Electrolytic, 10 $\mu$ F 16WV	
C307	ECEV1CA100SR	Electrolytic, 10 $\mu$ F 16WV	
C308	ECEV1CG100GR	Electrolytic, 10 $\mu$ F 16WV	
C309	ECEV1CA100SR	Electrolytic, 10 $\mu$ F 16WV	
C600	ECEA0JKS331I	Electrolytic, 330 $\mu$ F 6.3WV	
C602	YECUS1C104KX	Ceramic, 0.1 $\mu$ F 16WV	
C605	YEECFYL473ZM	Electrolytic, 47 $\mu$ F 5.5WV	
C610	YECUS1H103KX	Ceramic, 0.01 $\mu$ F 50WV	
C611	YECUS1C104KX	Ceramic, 0.1 $\mu$ F 16WV	
C612	YECUS1H101JM	Ceramic, 100PF 50WV	
C613	YECUS1A105KX	Ceramic, 1 $\mu$ F 10WV	
C621	ECA0JM101I	Electrolytic, 100 $\mu$ F 6.3WV	
C622	YECUS1H100DM	Ceramic, 10PF 50WV	
C623	YECUS1H100DM	Ceramic, 10PF 50WV	
C701	ECA1CM102L	Electrolytic, 1000 $\mu$ F 16WV	
C702	YECUS1H103KX	Ceramic, 0.01 $\mu$ F 50WV	
C703	ECA1CM471	Electrolytic, 470 $\mu$ F 16WV	
C704	ECEA0JKA470I	Electrolytic, 47 $\mu$ F 6.3WV	
C705	YECUS1H332KX	Ceramic, 3300PF 50WV	
C721	EEAFC1A820H	Electrolytic, 82 $\mu$ F 10WV	
C722	YECUS1C104KX	Ceramic, 0.1 $\mu$ F 16WV	
C723	ECEA0JKA470I	Electrolytic, 47 $\mu$ F 6.3WV	
C724	ECEA1CKA101	Electrolytic, 100 $\mu$ F 16WV	
<b>RESISTORS</b>			
J2	ERJ6GEY0R00	Chip, 0 $\Omega$ 1/10W	
J3	ERJ6GEY0R00	Chip, 0 $\Omega$ 1/10W	
J5	ERJ6GEY0R00	Chip, 0 $\Omega$ 1/10W	
J7	ERJ6GEY0R00	Chip, 0 $\Omega$ 1/10W	
R201	ERJ6GEYJ102	Chip, 1k $\Omega$ 1/10W	
R202	ERJ6GEYJ123	Chip, 12k $\Omega$ 1/10W	
R203	ERJ6GEYJ123	Chip, 12k $\Omega$ 1/10W	
R204	ERJ6GEYJ101	Chip, 100 $\Omega$ 1/10W	
R205	ERJ6GEYJ473	Chip, 47k $\Omega$ 1/10W	
R206	ERJ6GEYJ222	Chip, 2.2k $\Omega$ 1/10W	
R207	ERJ6GEYJ472	Chip, 4.7k $\Omega$ 1/10W	
R208	ERJ6GEYJ101	Chip, 100 $\Omega$ 1/10W	
R209	ERJ6GEYJ473	Chip, 47k $\Omega$ 1/10W	
R210	ERJ6GEYJ473	Chip, 47k $\Omega$ 1/10W	

Ref. No.	Part No.	Part Name & Description	Remarks
R211	ERJ6GEYJ473	Chip, 47kΩ 1/10W	
R212	ERJ6GEYJ222	Chip, 2.2kΩ 1/10W	
R213	ERJ6GEYJ473	Chip, 47kΩ 1/10W	
R214	ERJ6GEYJ472	Chip, 4.7kΩ 1/10W	
R215	ERJ6GEYJ472	Chip, 4.7kΩ 1/10W	
R216	ERJ8GEY0R00V	Chip, 0Ω 1/8W	
R220	ERJ6GEYJ103	Chip, 10kΩ 1/10W	
R221	ERJ6GEYJ103	Chip, 10kΩ 1/10W	
R222	ERJ6GEYJ223	Chip, 22kΩ 1/10W	
R223	ERJ6GEYJ223	Chip, 22kΩ 1/10W	
R224	ERJ6GEYJ222	Chip, 2.2kΩ 1/10W	
R225	ERJ6GEYJ222	Chip, 2.2kΩ 1/10W	
R226	ERJ6GEYJ222	Chip, 2.2kΩ 1/10W	
R227	ERJ6GEYJ222	Chip, 2.2kΩ 1/10W	
R229	ERJ6GEYJ103	Chip, 10kΩ 1/10W	
R301	ERJ6GEYJ102	Chip, 1kΩ 1/10W	
R302	ERJ6GEYJ123	Chip, 12kΩ 1/10W	
R303	ERJ6GEYJ123	Chip, 12kΩ 1/10W	
R304	ERJ6GEYJ101	Chip, 100Ω 1/10W	
R305	ERJ6GEYJ473	Chip, 47kΩ 1/10W	
R306	ERJ6GEYJ222	Chip, 2.2kΩ 1/10W	
R307	ERJ6GEYJ472	Chip, 4.7kΩ 1/10W	
R308	ERJ6GEYJ101	Chip, 100Ω 1/10W	
R309	ERJ6GEYJ473	Chip, 47kΩ 1/10W	
R310	ERJ6GEYJ473	Chip, 47kΩ 1/10W	
R311	ERJ6GEYJ473	Chip, 47kΩ 1/10W	
R312	ERJ6GEYJ222	Chip, 2.2kΩ 1/10W	
R313	ERJ6GEYJ473	Chip, 47kΩ 1/10W	
R316	ERJ8GEY0R00V	Chip, 0Ω 1/8W	
R604	ERJ6GEYJ224	Chip, 220kΩ 1/10W	
R605	D1BD43020001	Metal Film, 43kΩ 1/10W	
R606	D0GF223JA002	Metal Film, 22kΩ 1/16W	
R607	YER122P4701D	Metal Film, 4.7kΩ 1/10W	
R608	ERJ6GEYJ103	Chip, 10kΩ 1/10W	
R609	ERJ6GEYJ473	Chip, 47kΩ 1/10W	
R610	ERJ6GEYJ473	Chip, 47kΩ 1/10W	
R611	ERJ6GEYJ473	Chip, 47kΩ 1/10W	
R612	ERJ6GEYJ473	Chip, 47kΩ 1/10W	
R613	ERJ6GEYJ473	Chip, 47kΩ 1/10W	
R614	ERJ6GEY0R00	Chip, 0Ω 1/10W	
R615	ERJ6GEYJ473	Chip, 47kΩ 1/10W	
R621	ERJ6GEYJ562	Chip, 5.6kΩ 1/10W	
R622	ERJ6GEYJ472	Chip, 4.7kΩ 1/10W	
R623	ERJ6GEYJ272	Chip, 2.7kΩ 1/10W	
R624	ERJ6GEYJ122	Chip, 1.2kΩ 1/10W	
R625	ERJ6GEYJ392	Chip, 3.9kΩ 1/10W	
R626	ERJ6GEYJ102	Chip, 1kΩ 1/10W	
R627	ERJ6GEYJ561	Chip, 560Ω 1/10W	
R628	ERJ6GEYJ272	Chip, 2.7kΩ 1/10W	
R629	ERJ6GEYJ102	Chip, 1kΩ 1/10W	
R630	ERJ6GEYJ122	Chip, 1.2kΩ 1/10W	
R631	ERJ6GEYJ392	Chip, 3.9kΩ 1/10W	
R632	ERJ6GEYJ561	Chip, 560Ω 1/10W	
R641	ERJ8GEYJ102V	Chip, 1kΩ 1/8W	
R642	ERJ8GEYJ102V	Chip, 1kΩ 1/8W	
R643	ERJ8GEYJ102V	Chip, 1kΩ 1/8W	
R644	ERJ8GEYJ102V	Chip, 1kΩ 1/8W	
R645	ERJ8GEYJ102V	Chip, 1kΩ 1/8W	
R646	ERJ8GEYJ102V	Chip, 1kΩ 1/8W	
R701	ERJ8GEY0R00V	Chip, 0Ω 1/8W	
R702	ERJ6GEYJ153	Chip, 15kΩ 1/10W	
R721	ERJ6GEYJ470	Chip, 47Ω 1/10W	
R731	ERJ6GEYJ471	Chip, 470Ω 1/10W	
R732	ERJ6GEYJ153	Chip, 15kΩ 1/10W	
R733	ERJ6GEYJ471	Chip, 470Ω 1/10W	
R735	ERJ6GEYJ102	Chip, 1kΩ 1/10W	
R736	ERJ6GEYJ332	Chip, 3.3kΩ 1/10W	
R739	ERJ6GEYJ682	Chip, 6.8kΩ 1/10W	
R740	ERJ6GEYJ392	Chip, 3.9kΩ 1/10W	
R743	ERJ6GEYJ102	Chip, 1kΩ 1/10W	

Ref. No.	Part No.	Part Name & Description	Remarks
CONNECTORS			
CP601	YEA5227115	Connector, 15P	
CP602	YEA0114MX	Connector, 14P	
CRYSTAL			
XL600	YEXLCST419MG	Crystal	
[E-8625A] Display Block			
IC's and TRANSISTORS			
IC901	C0JBAQ000073	IC	
DIODES			
D901	B3ABA0000259	Diode	
D902	B3ABA0000259	Diode	
D903	YEA0SEC2484C	Diode	
D904	YEA0SEC2484C	Diode	
D905	YEA0SEC2484C	Diode	
D906	YEA0SEC2484C	Diode	
D907	YEA0SEC2484C	Diode	
D908	YEA0SEC2484C	Diode	
D909	B3ABA0000259	Diode	
CAPACITOR			
C902	YECUS1C104KX	Ceramic, 0.1μF 16WV	
RESISTORS			
R901	ERJ6GEYJ331	Chip, 330Ω 1/10W	
R902	ERJ6GEYJ102	Chip, 1kΩ 1/10W	
R903	D0GD391JA003	Metal Film, 390Ω 1/16W	
R904	D0GD391JA003	Metal Film, 390Ω 1/16W	
R905	D0GD391JA003	Metal Film, 390Ω 1/16W	
R906	D0GD391JA003	Metal Film, 390Ω 1/16W	
R907	D0GD391JA003	Metal Film, 390Ω 1/16W	
R908	D0GD391JA003	Metal Film, 390Ω 1/16W	
R909	ERJ6GEYJ331	Chip, 330Ω 1/10W	
CONNECTOR			
CN602	YEA0114MPA	Connector, 14P	
SWITCHES			
SW901	EVQPVF05K	Switch	
SW902	EVQPVF05K	Switch	
SW903	EVQPVF05K	Switch	
SW904	EVQPVF05K	Switch	
SW905	EVQPVF05K	Switch	
SW906	EVQPVF05K	Switch	
SW907	EVQPVF05K	Switch	
LAMPs			
PL901	YEA0HSIB024	Pilot Lamp	
PL902	YEA0HSIB024	Pilot Lamp	
PL903	YEA0HSIB024	Pilot Lamp	
[E-2714] Connector Block			
CONNECTORS			
CN701	YEAEM2015L	Connector, 15P	
CN703	K2LZ120B0001	Connector, 20P	
CN704	YEA012081A	Connector, 13P	

Ref. No.	Part No.	Part Name & Description	Remarks
<b>Accessories</b>			
<b>PRINTINGS</b>			
	YEFM283363A	Operating Instruction	
	YEFM292549A	Installation Manual	
<b>INSTALLATION PART</b>			
	YEP9BS821	Screws Kit	
<b>Mechanical Parts</b>			
<b>MISCELLANEOUS</b>			
AT1	YEAT03346A	Terminal	
AT2	YEAT03346A	Terminal	
CJ701	YEAJ04875	Cord w/Plug	
CP603	YEAES15B040A	Flat Cable, 15P	
1	YEFA031613	Upper Cover	
2	YEP0PT8624A0	PCB w/Component, Main	RTL
3	YEFX0214540	Bracket, IC720	
4	YEFX0214690	Bracket, Deck	
5	YEFX0214692	Bracket, Connector Block	
6	YEFX0214691	Bracket, CN703	
7	YEP0PT2714A0	PCB w/Component, Connector	RTL
8	YEFV011454A	Insulator	
9	YEFA08481	Rear Plate	
10	YEFX9991938A	Guide Plate	
11	YEFS02332	Felt	
12	YEFX9991346	Spring, GND	
13	YEP0PT8625A0	PCB w/Component, Display	RTL
14	YEFK06855A	Holder, Rubber	
15	YEF026247C	Escucheon Ass'y	
16	YEFV011934	Insulator	
17	YEFA011804	Chassis	
21	YEJS06223	Screw, 3mm * 5mm	
22	XTB3+5FFX	Screw, 3mm * 5mm	
23	YEJS06093	Screw, 3mm * 6mm	
24	YEJT03142	Tapping Screw	
25	XTB2+6GFX	Tapping Screw, 2mm * 6mm	
26	XTB3+6FFX	Tapping Screw, 3mm * 6mm	
27	XTB3+8FFX	Tapping Screw, 3mm * 8mm	
28	XTB2+8GFX	Tapping Screw, 2mm * 8mm	

# 12 EXPLODED VIEW (Unit)





# 13 CD CHANGER PARTS LIST

## 13.1. IC's and Transistors

SERVO BLOCK [E8586C]

Ref. No.	Part No.	Part Name & Description	Remarks
IC101	C1BB00000173	IC	
IC201	MN662783RPW	IC	
IC202	C3ABMB000010	IC	
IC301	MNS73260ACBL	IC	
IC401	YEAMBA6792FY	IC	
IC501	YEAMPC358G2T	IC	
IC601	COGBY0000004	IC	
IC602	COJBAS0000051	IC	
IC603	YEAMT4W53FUL	IC	
Q101	2SB766ATX	Transistor	

[E2685B]

Ref. No.	Part No.	Part Name & Description	Remarks
Q1	PNZ14700S	Transistor	
Q2	PNZ14700S	Transistor	
Q3	PNZ14700s	Transistor	

## 13.2. Diodes

SERVO BLOCK [E8586C]

Ref. No.	Part No.	Part Name & Description	Remarks
D301	MA152WKTX	Diode	

[E2682]

Ref. No.	Part No.	Part Name & Description	Remarks
D1	ON1004	LED	

[E2684B]

Ref. No.	Part No.	Part Name & Description	Remarks
D1	LN01201C	LED	
D2	LN01201C	LED	
D3	LN01201C	LED	

[E2685B]

Ref. No.	Part No.	Part Name & Description	Remarks
D1	ON1004	LED	

## 13.3. Capacitors

SERVO BLOCK [E8586C]

Ref. No.	Part No.	Part Name & Description	Remarks
C100	ECEV1CA470SP	Electrolytic, 47µF 16WV	
C101	YECUS1C104KX	Ceramic, 0.1µF 16WV	
C102	YECUS1C104KX	Ceramic, 0.1µF 16WV	
C103	F3H0J1070005	Tantalum, 100µF 6.3WV	
C104	YECUS1C104KX	Ceramic, 0.1µF 16WV	
C105	F3E0J475A001	Ceramic, 4.7µF 6.3WV	
C106	YECUS1E273KX	Ceramic, 0.027µF 25WV	
C107	YECUS1H152KX	Ceramic, 0.0015µF 50WV	
C108	YECUS1H472KX	Ceramic, 0.0047µF 50WV	
C109	YECUS1H102KX	Ceramic, 0.001µF 50WV	
C110	YECUS1H102KX	Ceramic, 0.001µF 50WV	
C111	YECUSW1C106MS	Tantalum, 10µF 16WV	
C112	YECUS1C104KX	Ceramic, 0.1µF 16WV	
C113	YECUS1C104KX	Ceramic, 0.1µF 16WV	
C114	YECUSW1C106MS	Tantalum, 10µF 16WV	
C115	YECUS1H102KX	Ceramic, 0.001µF 50WV	
C116	YECUS1H102KX	Ceramic, 0.001µF 50WV	
C118	YECUS1H391JM	Ceramic, 390PF 50WV	
C120	YECUS1H561JM	Ceramic, 560PF 50WV	
C122	YECUS1C104KX	Ceramic, 0.1µF 16WV	

Ref. No.	Part No.	Part Name & Description	Remarks
C202	YECUS1H123KX	Ceramic, 0.012µF 50WV	
C203	YECUS1C334KX	Ceramic, 0.33µF 16WV	
C204	YECUS1C104KX	Ceramic, 0.1µF 16WV	
C205	YECUSW1C106MS	Tantalum, 10µF 16WV	
C206	ECEV0JA470SR	Electrolytic, 47µF 6.3WV	
C207	YECUS1C104KX	Ceramic, 0.1µF 16WV	
C208	YECUS1C104KX	Ceramic, 0.1µF 16WV	
C209	YECUSW1C106MS	Tantalum, 10µF 16WV	
C210	YECUS1C104KX	Ceramic, 0.1µF 16WV	
C211	YECUS1A105KX	Ceramic, 1µF 10WV	
C301	YECUS1C104KX	Ceramic, 0.1µF 16WV	
C302	YECUSW1C106MS	Tantalum, 10µF 16WV	
C305	YECUS1H103KX	Ceramic, 0.01µF 50WV	
C401	YECUS1C104KX	Ceramic, 0.1µF 16WV	
C402	ECEV1CA470SP	Electrolytic, 47µF 16WV	
C403	YECUS1C104KX	Ceramic, 0.1µF 16WV	
C501	YECUS1C104KX	Ceramic, 0.1µF 16WV	
C503	YECUS1E273KX	Ceramic, 0.027µF 25WV	
C504	YECUS1E393KX	Ceramic, 0.039µF 25WV	
C601	YECUS1C104KX	Ceramic, 0.1µF 16WV	
C602	ECEV1CA470SP	Electrolytic, 47µF 16WV	
C603	YECUS1C104KX	Ceramic, 0.1µF 16WV	
C604	YECUS1C104KX	Ceramic, 0.1µF 16WV	
C605	F1H1H821A190	Ceramic, 820pF 50WV	

## 13.4. Resistors

SERVO BLOCK [E8586C]

Ref. No.	Part No.	Part Name & Description	Remarks
R100	ERJ6GEYJ334	Chip, 330kΩ 1/10W	
R101	ERJ6GEYJ101	Chip, 100Ω 1/10W	
R102	ERJ12YJ330H	Chip, 33Ω 1/2W	
R103	ERJ6GEYJ683	Chip, 68kΩ 1/10W	
R104	ERJ6GEYJ683	Chip, 68kΩ 1/10W	
R105	ERJ6GEYJ333	Chip, 33kΩ 1/10W	
R106	ERJ6GEYJ184	Chip, 180kΩ 1/10W	
R107	ERJ6GEYJ184	Chip, 180kΩ 1/10W	
R108	ERJ6GEYJ823	Chip, 82kΩ 1/10W	
R109	ERJ6GEYJ334	Chip, 330kΩ 1/10W	
R110	ERJ6GEYJ102	Chip, 1kΩ 1/10W	
R111	ERJ6GEYJ102	Chip, 1kΩ 1/10W	
R112	ERJ6GEYJ393	Chip, 39kΩ 1/10W	
R113	ERJ6GEYJ333	Chip, 33kΩ 1/10W	
R201	ERJ6GEYJ124	Chip, 120kΩ 1/10W	
R202	ERJ6GEYJ473	Chip, 47kΩ 1/10W	
R203	ERJ6GEYJ334	Chip, 330kΩ 1/10W	
R204	ERJ6GEYJ473	Chip, 47kΩ 1/10W	
R205	ERJ6GEYJ331	Chip, 330Ω 1/10W	
R206	ERJ6GEYJ470	Chip, 47Ω 1/10W	
R207	ERJ6GEYJ472	Chip, 4.7kΩ 1/10W	
R208	ERJ6GEYJ472	Chip, 4.7kΩ 1/10W	
R209	ERJ6GEYJ472	Chip, 4.7kΩ 1/10W	
R210	ERJ6GEYJ472	Chip, 4.7kΩ 1/10W	
R211	ERJ6GEYJ472	Chip, 4.7kΩ 1/10W	
R212	ERJ6GEYJ472	Chip, 4.7kΩ 1/10W	
R213	ERJ6GEYJ472	Chip, 4.7kΩ 1/10W	
R301	ERJ6GEYJ472	Chip, 4.7kΩ 1/10W	
R302	ERJ6GEYJ472	Chip, 4.7kΩ 1/10W	
R303	ERJ6GEYJ472	Chip, 4.7kΩ 1/10W	
R304	ERJ6GEYJ472	Chip, 4.7kΩ 1/10W	
R305	ERJ6GEYJ563	Chip, 56kΩ 1/10W	
R306	ERJ6GEYJ563	Chip, 56kΩ 1/10W	
R307	ERJ6GEYJ473	Chip, 47kΩ 1/10W	
R308	ERJ6GEYJ472	Chip, 4.7kΩ 1/10W	
R309	ERJ6GEYJ472	Chip, 4.7kΩ 1/10W	
R310	ERJ6GEYJ472	Chip, 4.7kΩ 1/10W	
R311	ERJ6GEYJ472	Chip, 4.7kΩ 1/10W	
R312	ERJ6GEYJ473	Chip, 47kΩ 1/10W	
R313	ERJ6GEYJ473	Chip, 47kΩ 1/10W	
R314	ERJ6GEYJ823	Chip, 82kΩ 1/10W	
R315	ERJ6GEYJ823	Chip, 82kΩ 1/10W	
R316	ERJ6GEYJ823	Chip, 82kΩ 1/10W	

Ref. No.	Part No.	Part Name & Description	Remarks
R317	ERJ6GEYJ471	Chip, 470Ω 1/10W	
R318	ERJ6GEYJ471	Chip, 470Ω 1/10W	
R319	ERJ6GEYJ471	Chip, 470Ω 1/10W	
R320	ERJ6GEYJ471	Chip, 470Ω 1/10W	
R321	ERJ6GEYJ471	Chip, 470Ω 1/10W	
R322	ERJ6GEYJ473	Chip, 47kΩ 1/10W	
R324	ERJ6GEYJ473	Chip, 47kΩ 1/10W	
R325	ERJ6GEYJ473	Chip, 47kΩ 1/10W	
R326	ERJ6GEYJ473	Chip, 47kΩ 1/10W	
R327	ERJ6GEYJ473	Chip, 47kΩ 1/10W	
R328	ERJ6GEYJ473	Chip, 47kΩ 1/10W	
R401	ERJ6GEYJ222	Chip, 2.2kΩ 1/10W	
R402	ERJ6GEYJ222	Chip, 2.2kΩ 1/10W	
R501	ERJ6GEYJ101	Chip, 100Ω 1/10W	
R502	ERJ6GEYJ103	Chip, 10kΩ 1/10W	
R503	ERJ6GEYJ103	Chip, 10kΩ 1/10W	
R504	ERJ6GEYJ222	Chip, 2.2kΩ 1/10W	
R505	ERJ6GEYJ103	Chip, 10kΩ 1/10W	
R601	ERJ6GEYJ123	Chip, 12kΩ 1/10W	
R602	ERJ6GEYJ103	Chip, 10kΩ 1/10W	
R603	ERJ6GEYJ273	Chip, 27kΩ 1/10W	
R604	ERJ6GEYJ103	Chip, 10kΩ 1/10W	
R605	ERJ6GEYJ183	Chip, 18kΩ 1/10W	
R606	ERJ6GEYJ393	Chip, 39kΩ 1/10W	
R607	ERJ6GEYJ103	Chip, 10kΩ 1/10W	
R608	ERJ6GEYJ472	Chip, 4.7kΩ 1/10W	
R609	ERJ6GEYJ472	Chip, 4.7kΩ 1/10W	

### 13.5. Connectors

#### SERVO BLOCK [E8586C]

Ref. No.	Part No.	Part Name & Description	Remarks
CN1	YEAE5220715	Connector, 15P	
CN101	YEAE5220715	Connector, 15P	
CN301	YEAE5227112	Connector, 12P	
CN401	YEAE5220706	Connector, 6P	
CN402	YEAE5326102	Connector, 2P	
CN501	YEAE5227110	Connector, 10P	

#### [E2685B]

Ref. No.	Part No.	Part Name & Description	Remarks
JD1	YEAE5227106	Connector, 6P	

### 13.6. Electric Parts

#### SWITCHES

Ref. No.	Part No.	Part Name & Description	Remarks
SW1	ESE102MH4	Switch	
SW1	ESE102MH4	Switch	
SW10	ESE102MH4	Switch	
SW11	ESE102MH4	Switch	
SW12	ESE102MH4	Switch	
SW13	ESE102MH4	Switch	

#### CRYSTAL

Ref. No.	Part No.	Part Name & Description	Remarks
XL301	YEXLSTCC737T	Crystal OSC	

#### CERAMIC FILTERS

Ref. No.	Part No.	Part Name & Description	Remarks
XL201	H2D169500001	Ceramic Filter	

#### COIL

Ref. No.	Part No.	Part Name & Description	Remarks
L101	YELTLM41P750	Coil	

### 13.7. Mechanical parts

#### MISCELLANEOUS

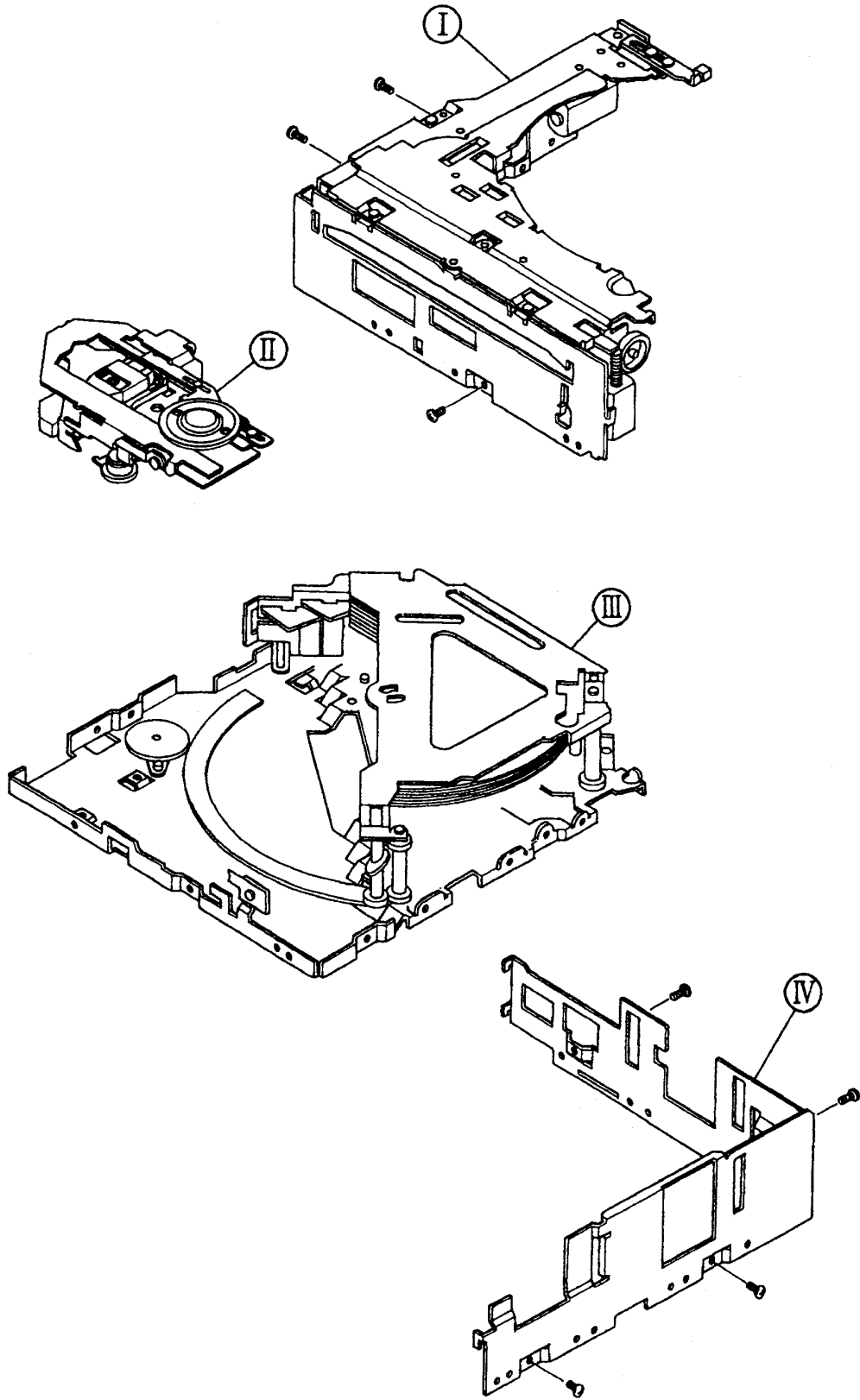
Ref. No.	Part No.	Part Name & Description	Remarks
3	YEAE012348A	Cord w/Connector	(4-A)
4	YEAP2683	Suspension FPC	(1-E)
5	YEATSD00405	Terminal	(1-F)
6	YEFA011711G	Upper Chassis Ass'y	(3-B)
7	YEFA011713A	Side Chassis (R)	(1-C)
8	YEFA011714D	Side Chassis (L) Ass'y	(4-A)
9	YEFA011716	Suspension Chassis Ass'y	(1-D)
10	YEFA011718A	Suspension Chassis(Bottom) Ass'y	(1-D)
11	YEFA011720B	Swing Chassis Ass'y	(3-D)
12	YEFA011722A	Stocker Plate Ass'y	(4-F)
13	YEFA011858B	Main Chassis Ass'y	(3-E)
14	YGFS04707	Damper	(4-D)
16	YEFV011897	Insulator	(2-F)
17	YEFW04158	Bearing	(3-D)
18	YEFW04159A	Roller Shaft Holder(L)	(2-B)
19	YEFW04161A	Feed Screw Housing	(1-E)
20	YGFW05412	Disc Collar	(2-B)
21	YEFW05389	Stocker Cam Ring	(4-E) (3-F)
22	YEFW062351	Disc Roller Shaft	(2-A)
23	YEFW062461B	Roller Shaft Ass'y	(2-B)
24	YEFX003872	Elevator Gear(1)	(3-F)
25	YEFX003873	Elevator Gear(2)	(2-F) (3-F)
26	YEFX003874	Elevator Gear(3)	(3-E)
27	YEFX003875	Elevator Gear(4)	(3-E) (2-F)
28	YEFX003877	Traverse Gear(2)	(2-D)
29	YEFX003878A	Traverse Gear(3)	(2-D)
30	YEFX003879	Traverse Gear(4)	(1-D)
31	YEFX003882A	Stocker Cam Gear(1)	(3-F)
32	YEFX003883B	Stocker Cam Gear(2)	(3-E) (2-F)
33	YEFX003884	Stocker Cam Gear(3)	(3-E) (2-F)
34	YEFX0031007	Disc Hold Gear	(3-F)
35	YEFX0031057	Load Gear	(3-B)
36	YEFX003891A	Push Gear(1)	(3-B)
37	YEFX0031003	Push Gear(2)	(3-B)
38	YEFX003894	Horizontal Cam Gear(1)	(3-D)
39	YEFX003895A	Horizontal Cam Gear(2)	(2-E)
40	YEFX003896	Horizontal Gear(1)	(3-E)
41	YEFX003897A	Horizontal Gear(2)	(3-E)
42	YEFX003898	Horizontal Gear(3)	(3-E)
43	YEFX003899B	Horizontal Gear(4)	(3-D)
44	YEFX003929	Horizontal Cam Gear(3)	(3-E)
45	YEFX003931	Horizontal Gear(5)	(3-D) (2-D)
46	YEFX003932A	Push Cam Gear	(3-B)
47	YEFX0052269	FPC Hold Spring	(2-D)
48	YEFX0052272	Guide Spring(B)	(1-B)
49	YEFX0052274B	Suspension Lock Spring	(3-D)
50	YEFX0052275A	Swing Spring	(3-D)
51	YEFX0052276A	Stocker Spring(1)	(4-D) (4-E)
52	YEFX0052277	Stocker Spring(2)	(4-D) (4-E)
53	YEFX0052278	Thrust Spring	(1-E)
54	YEFX0052279	Sencer Lever Spring	(1-E) (1-F)
55	YGFY0052494	Damper Spring (B)	(4-D)
56	YGFY0052447	Balance Spring(1)	(3-D)
57	YEFX0052284	Push Spring	(3-A)
58	YEFX0052285A	Spring	(4-B)
59	YEFX0052499	Roller Hold Spring(L)	(2-B)
60	YEFX0052527	Roller Hold Spring(R)	(2-B)
61	YEFX0052289A	Push Lever Spring	(4-E)
62	YEFX0052290A	Feeder Spring	(4-B)
63	YEFX0052291B	Push Plate Spring	(3-B)
64	YEFX0052292A	Change Spring	(1-D)
65	YEFX0052335	Guide Spring(F)	(2-B)

Ref. No.	Part No.	Part Name & Description	Remarks
66	YEFX0052366	Stocker Thrust Spring	(4-E) (3-F)
67	YGF0052495	Damper Spring (C)	(4-D)
68	YGF0052449A	Damper Spring (A)	(4-D)
69	YEFX0052445	Lock Spring	(3-A)
70	YEFX018552	Traverse Motor Bracket Ass'y	(2-E)
71	YEFX018553D	Guide(F) Bracket	(3-E)
72	YEFX018595	Guide(B)	(3-D)
73	YEFX018556A	Bearing Bracket	(3-D)
74	YEFX018596	Stopper Plate	(1-D)
75	YGF018638	Gear Bracket Ass'y	(2-D)
76	YEFX018600	Elevator Motor Bracket	(3-F)
77	YEFX0461903A	Guide Lever (B) Ass'y	(3-D)
78	YEFX0461905A	Guide Lever (F) Ass'y	(3-E)
79	YEFX0461914B	Senser Cover	(1-F)
80	YEFX0461917	Stocker Rack	(4-F)
81	YEFX0461918	Senser Lever(B)	(2-E)
82	YEFX0461919A	Sneser Lever(FA)	(1-F)
83	YEFX0461922D	Feeder Plate	(2-B)
84	YGF0462143	Push Lever	(3-A)
85	YEFX0461926A	Rack Lever	(3-F)
86	YEFX0461931A	Push Lever	(4-E)
87	YEFX0462062B	Escape Lever(1)	(3-A)
88	YEFX219129	Guide (F)	(2-B)
90	YEFX0462002C	Guide Cam Plate(F)	(1-B)
91	YEFX0462003B	Guide Cam (B) Plate Ass'y	(1-B)
92	YEFX0462026	Lever Guide Plate Ass'y	(2-D)
93	YEFX02342	Felt	(4-A)
94	YEFX0462029	Feeder Guide Plate Ass'y	(2-B)
95	YEFX206135C	Guide(BL)	(1-B)
96	YEFX206136D	Guide(BU)	(1-B)
97	YEFX206137A	Guide(FL)	(2-B)
98	YEFX206138C	Guide(FU)	(2-B)
99	YEFX206139E	Disc Guide	(2-A)
100	YEFX206140	Traverse Guide	(1-D)
101	YEFX206141A	FPC Guide	(1-D)
102	YEFX206143	Disc Guide(S)	(2-D)
103	YEFX206144	Disc Guide(U)	(3-B)
104	YEFX218296	Disc Roller	(2-A)
105	YEFX218299	Disc Roller	(2-B)
106	YEFX219124A	Guide (B) Base Ass'y	(1-B)
107	YEFX219126D	Guide Base (F) Ass'y	(2-B)
108	YEFX233504A	Stocker Tray Housing	(4-D)
109	YEFX233521	Disc Holder(L)	(3-F)
110	YEFX233506	Disc Holder(U)	(4-E)
111	YEFX234192	Elevator Cam	(2-E)
112	YEFX249486	Feeder Arm Ass'y	(1-A)
113	YEFX9992184	Suspension Balancer	(1-D)
114	YGF9992609	Stocker Tray	(4-D)
115	YEFX9991903A	Feed Screw Guide	(1-E)
120	YEJT03220	Feed Screw Ass'y	(1-D)
121	YEP0FX4078	Optical Pick-up Ass'y	(1-E)
122	YEP0FX3633	Spindle Motor Ass'y	(1-E)
123	YEP0FX3661S	Horizontal Motor Ass'y	(4-A)
124	YEP0FX3660S	Vertical Motor Ass'y	(3-F)
125	YEP0FX3662S	Loading Motor Ass'y	(3-C)
126	YEP0FX3663S	Traverse Motor Ass'y	(2-E)
134	YEFX218308	Roller	(1-A)
135	YEFX0031053	Load Gear	(2-B)
136	YEFX0031054	Load Gear	(2-C)
137	YEFX014040	Retaining Ring, 2mm	(2-C)
138	YEP0PT8586A2	PCB w/Component	RTL
139	YEP0PT2682A0	PCB w/Component	RTL
140	YEP0PT2684A0	PCB w/Component	RTL
141	YEP0PT2685A0	PCB w/Component	RTL

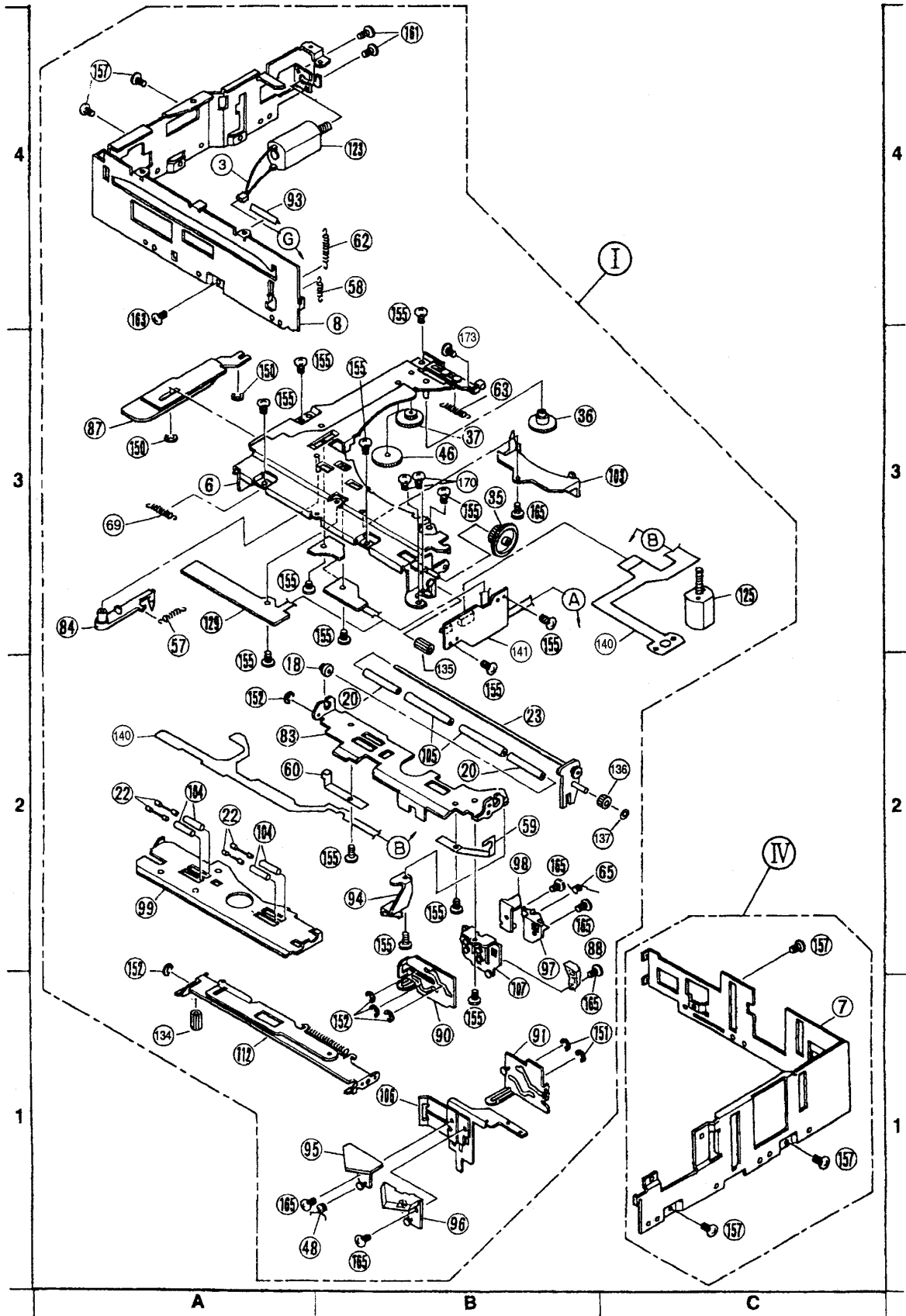
Ref. No.	Part No.	Part Name & Description	Remarks
155	YGJS06173	Screw	
156	YEJS06220	Screw	
157	YEJT03216	Tapping Screw	
158	XQN14+C18FX	Screw	
159	XQN17+A2FX	Screw	
160	XQN2+A2FX	Screw	
161	XQN2+C25FX	Screw	
162	XSB2+3FX	Screw, 2mm * 3mm	
163	XSB26+3FX	Screw, 2.6mm * 3mm	
164	XYN2+C3FX	Screw, 2mm * 3mm	
165	XYN2+C4FX	Screw, 2mm * 4mm	
166	XSB2+4FX	Screw, 2mm * 4mm	
167	XYN2+J5FX	Screw, 2mm * 5mm	
168	XYN2+C6FX	Screw, 2mm * 6mm	
169	XYN2+C10FX	Screw, 2mm * 10mm	
170	XQN2+C2FX	Screw, 2mm * 2mm	
171	YEJT03129	Tapping Screw, 2mm * 4mm	
173	YEJS06244	Screw	
174	YEJS06242	Screw	

Ref. No.	Part No.	Part Name & Description	Remarks
150	XUC2V	Retaining Ring, 2mm	
151	YEJE01044	Retaining Ring	
152	XUC15V	Retaining Ring, 1.5mm	
153	YEFX014047	Retaining Ring	
154	YEJS06097A	Screw, 2mm * 2.5mm	

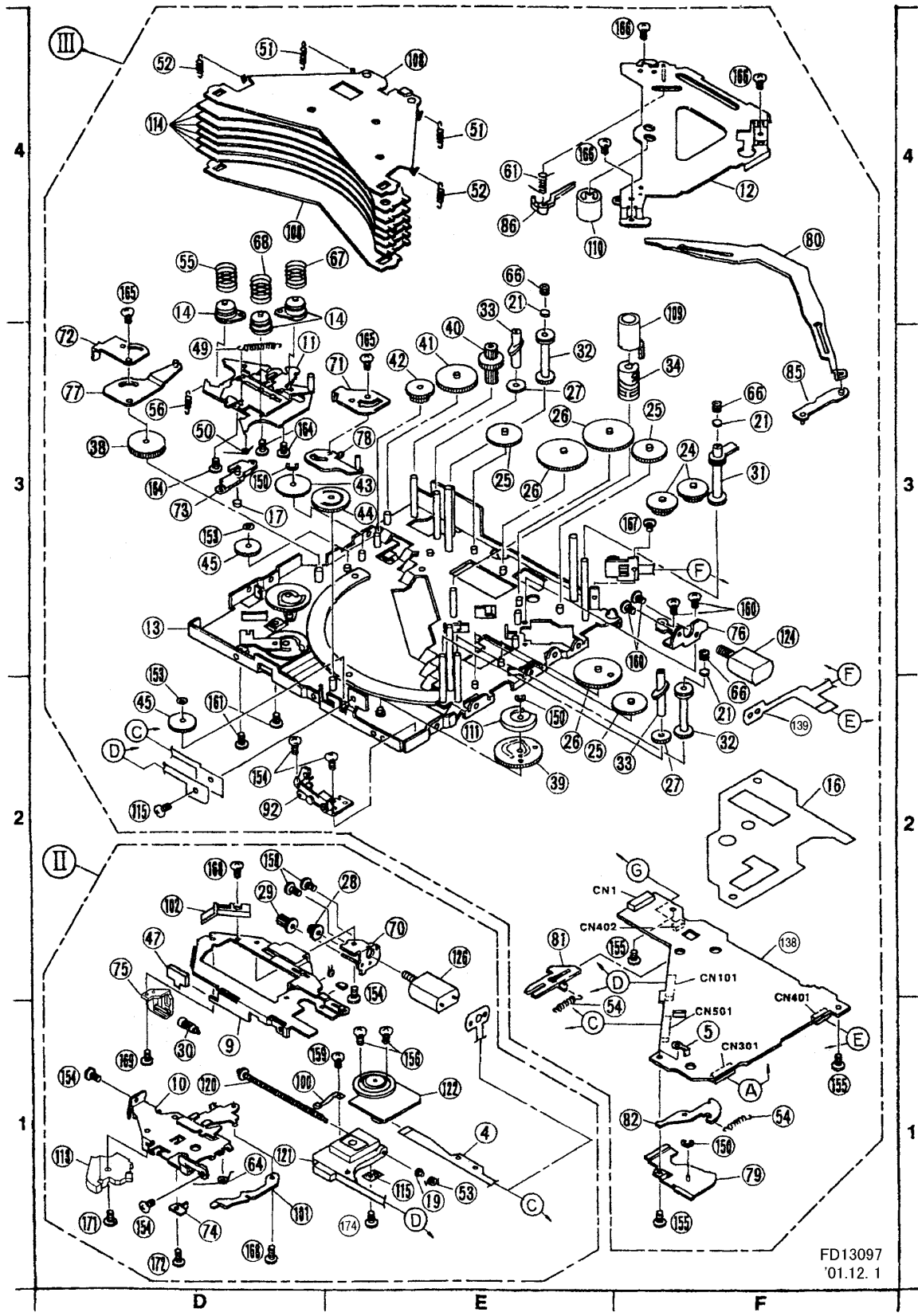
# 14 EXPLODED VIEW (CD Deck-1)



# 15 EXPLODED VIEW (CD Deck-2)



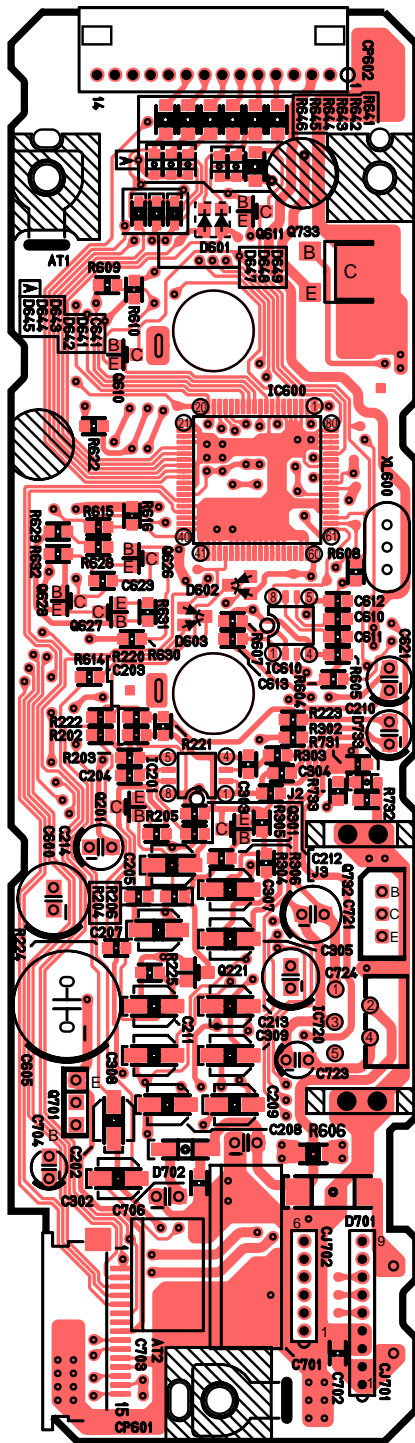
# 16 EXPLODED VIEW (CD Deck-3)



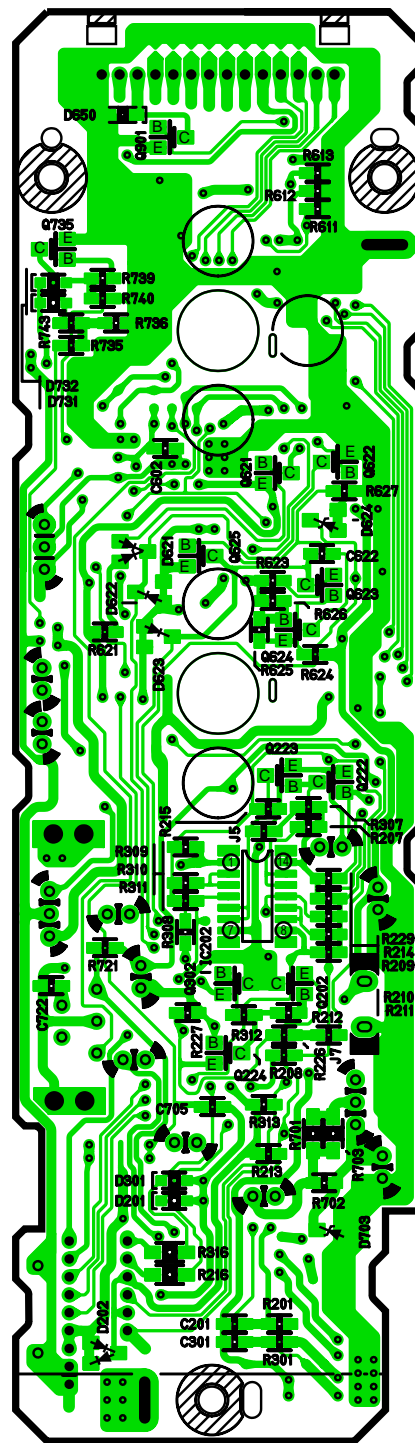
FD13097  
'01.12. 1

# 17 WIRING DIAGRAM

## 17.1. Main Block



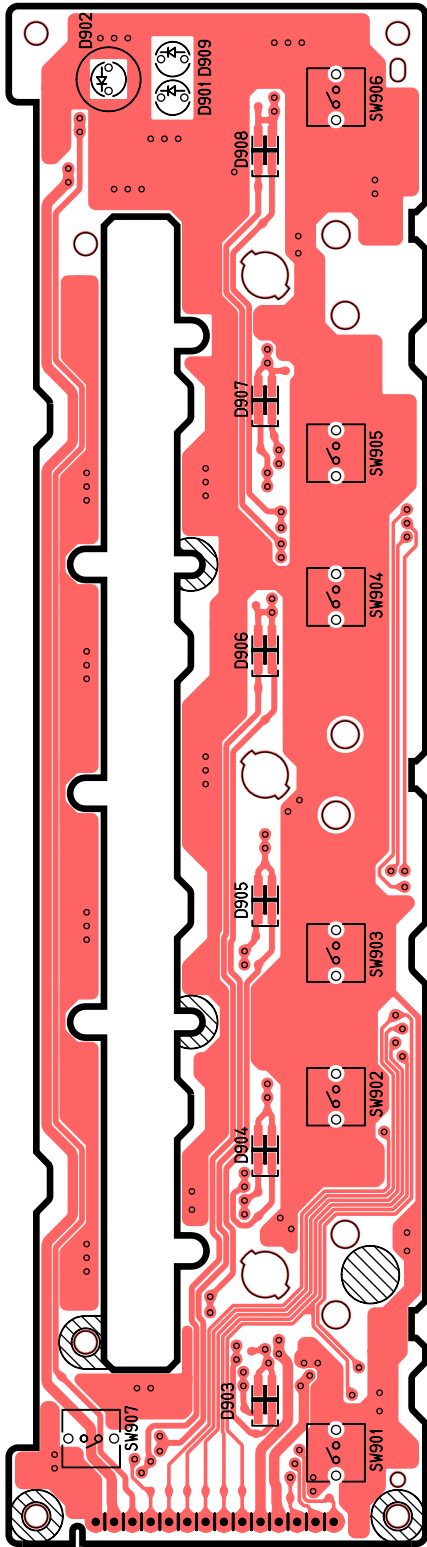
[E-8624B] [Top View]



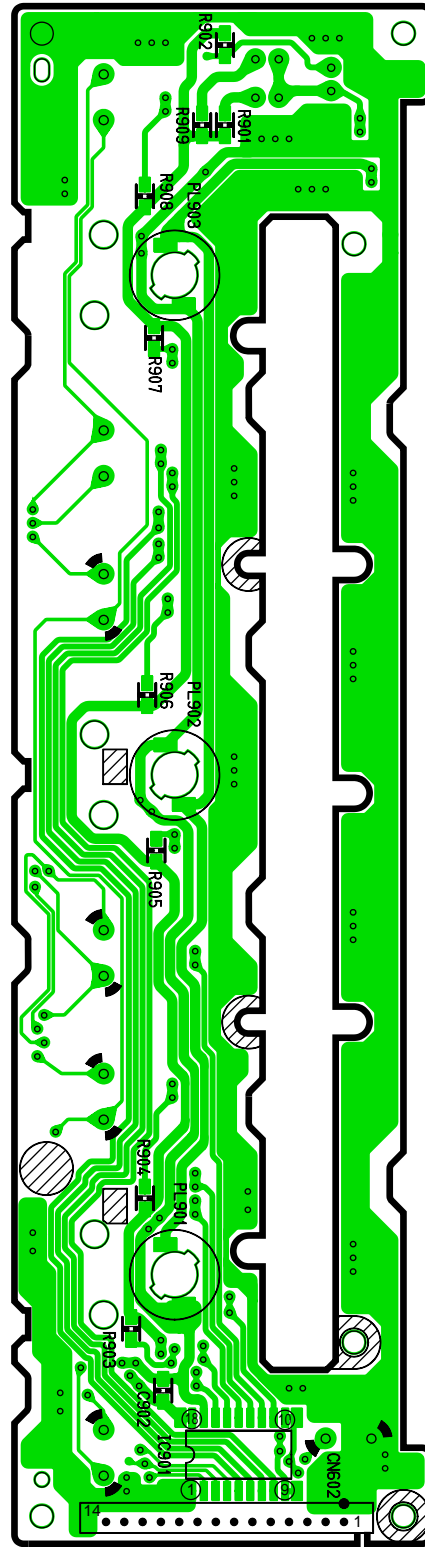
[E-8624B] [Bottom View]

CX-CB0910FA MAIN P.C.B.

# 17.2. Display Block



[E-8625A][Top View]

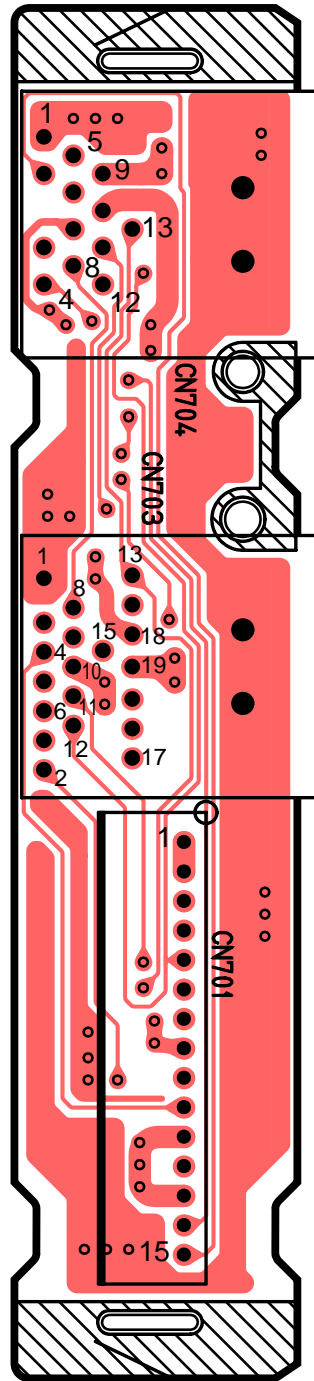


[E-8625A][Bottom View]

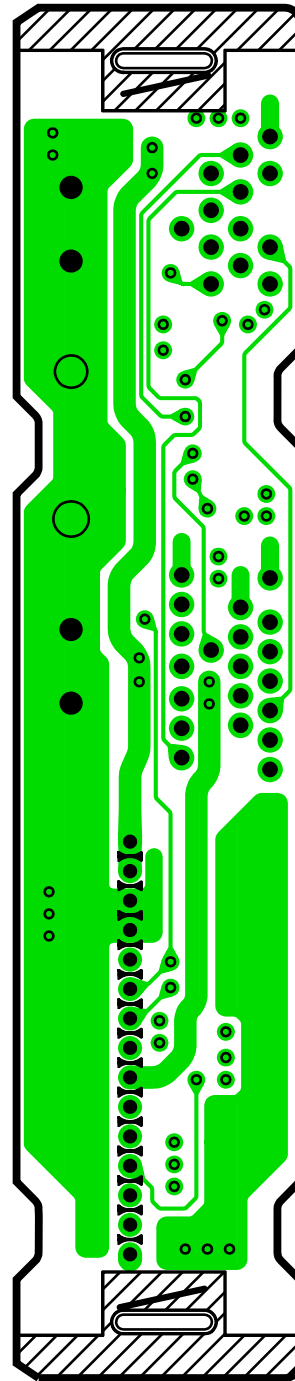
CX-CB0910FA DISPLAY P.C.B.



### 17.3. Connector Block



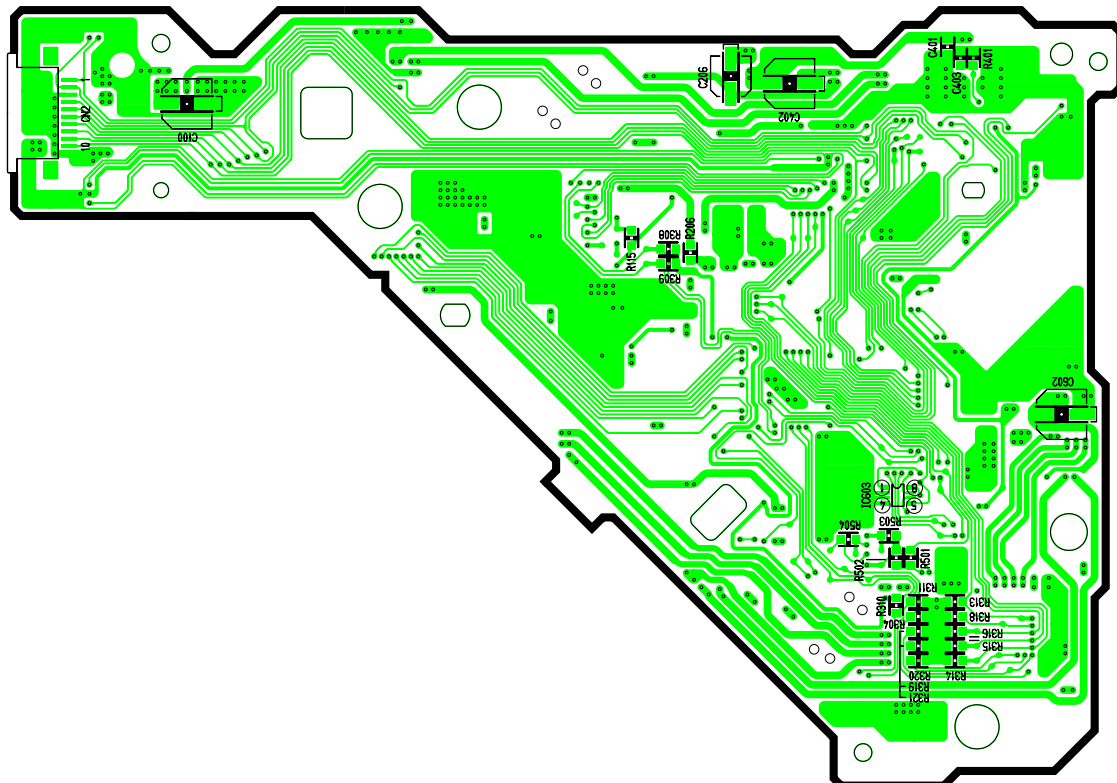
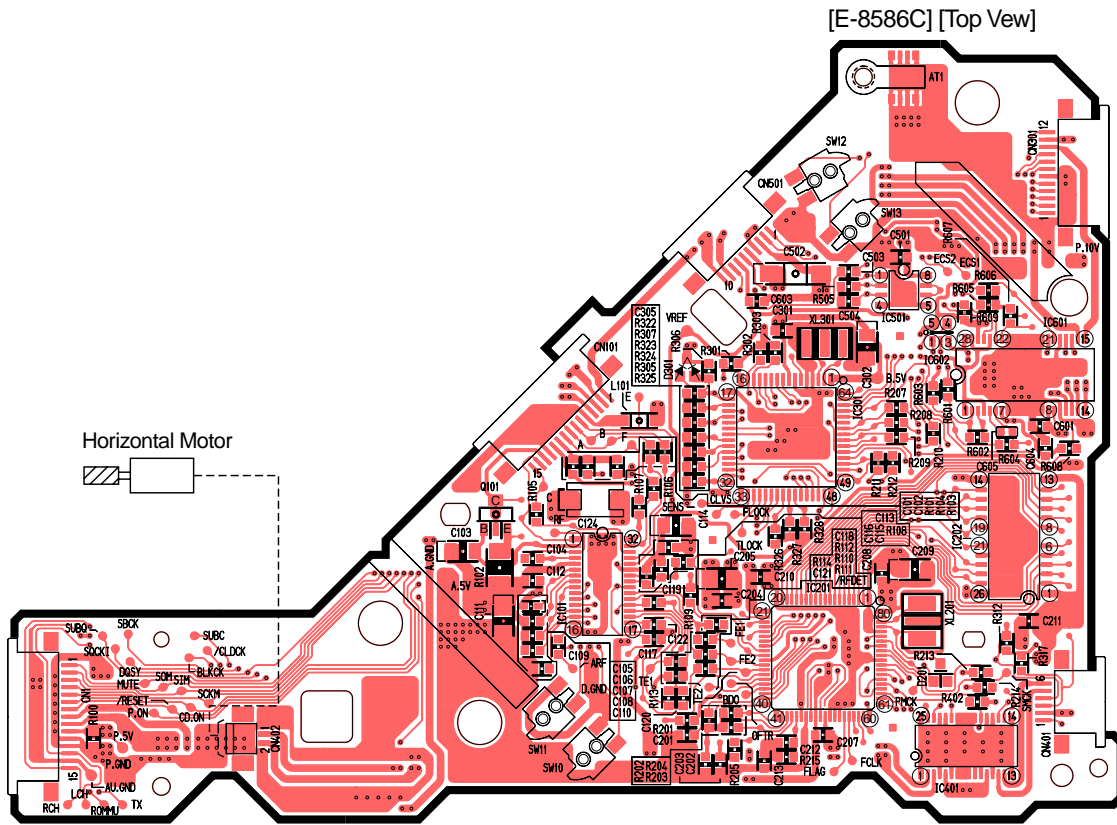
[E-2714]  
[Top View]



[E-2714]  
[Bottom View]

CX-CB0910FA CONNECTOR P.C.B.

# 17.4. CD Servo Block



[E-8586C] [Bottom View]

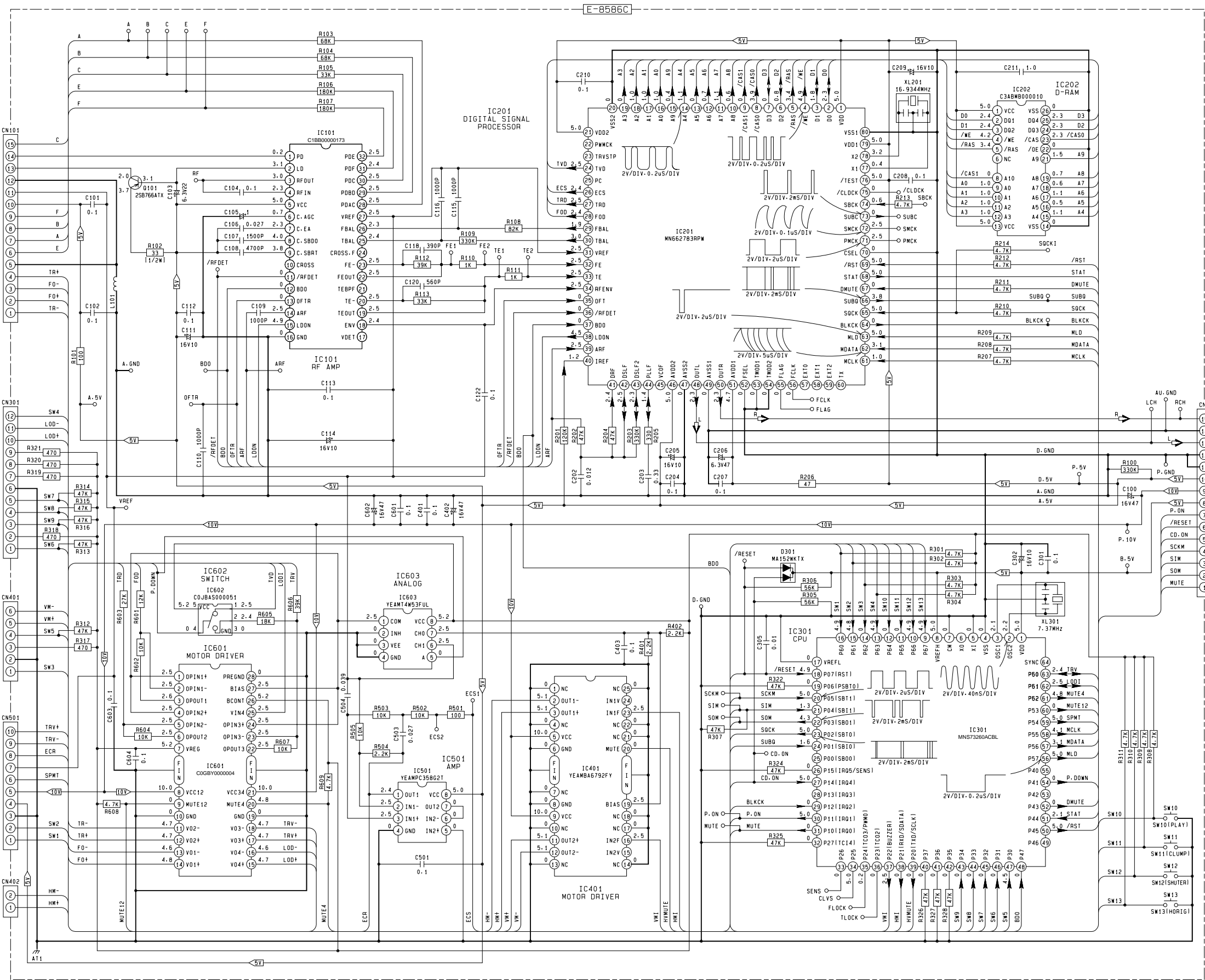
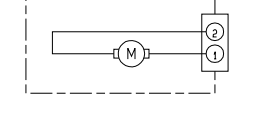
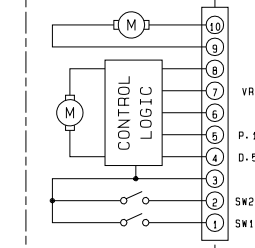
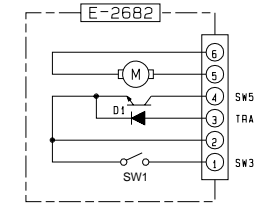
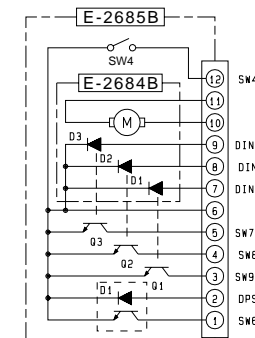
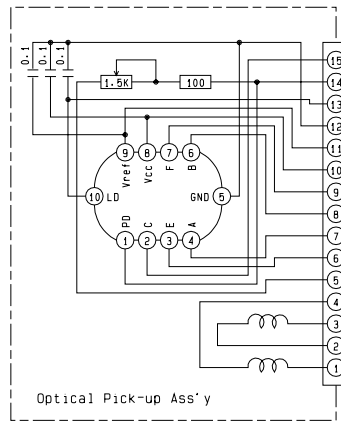
CX-CB0910FA CD SERVO P.C.B.



# 18.2. CD Servo Block

The following symbols are shown on the schematic diagram.

	10V
	5V
	(L, R)



To E-8624B CP601