

# SERVICE MANUAL

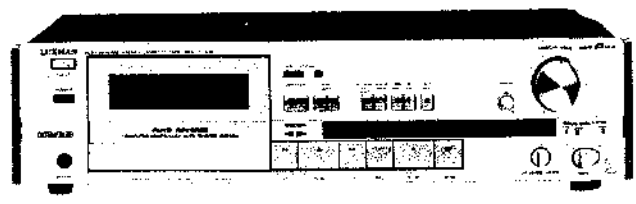
Auto Reverse Stereo Cassette Tape Deck

## **K-105 / K-405**

**Temporary**

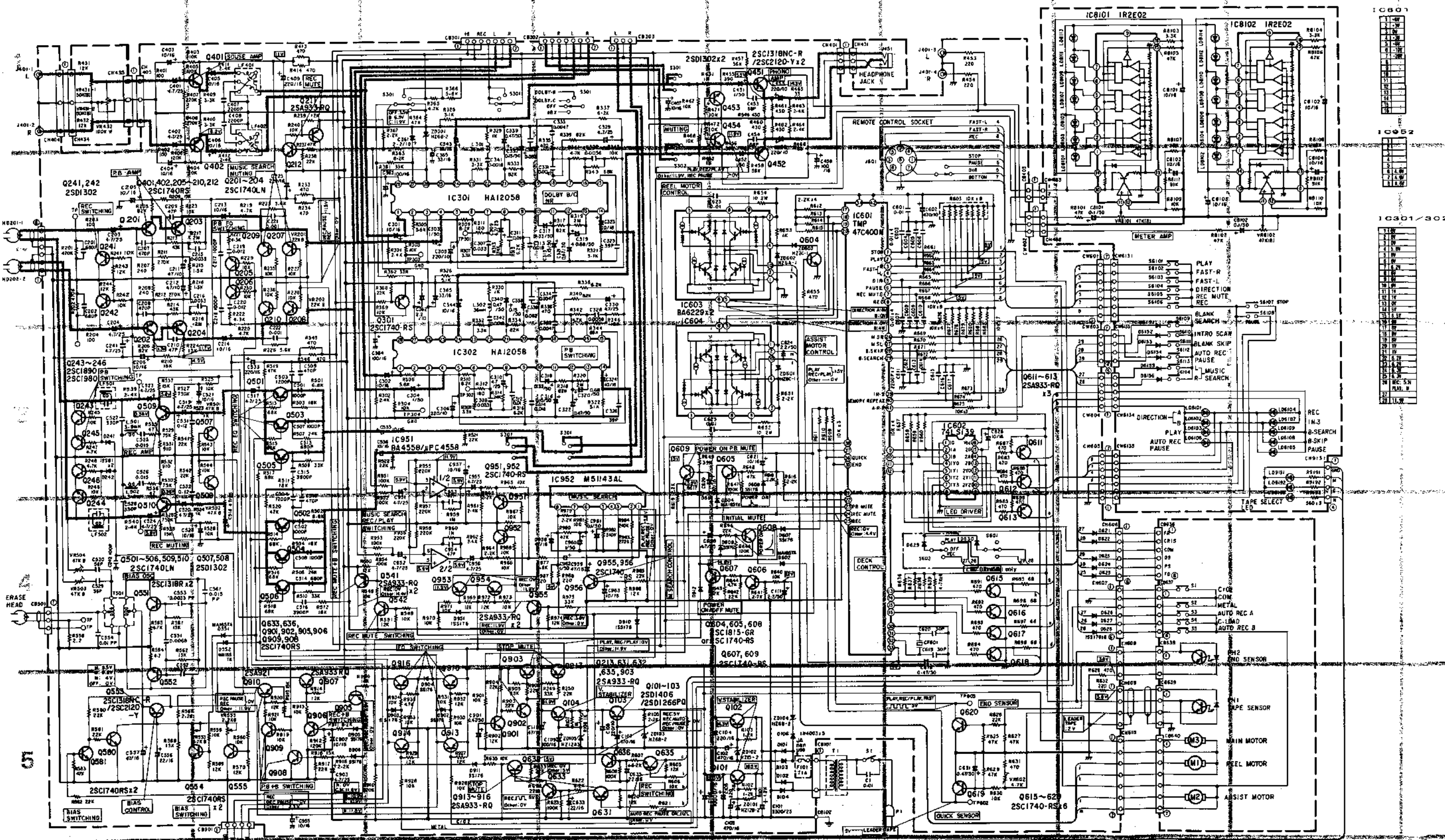


K-105



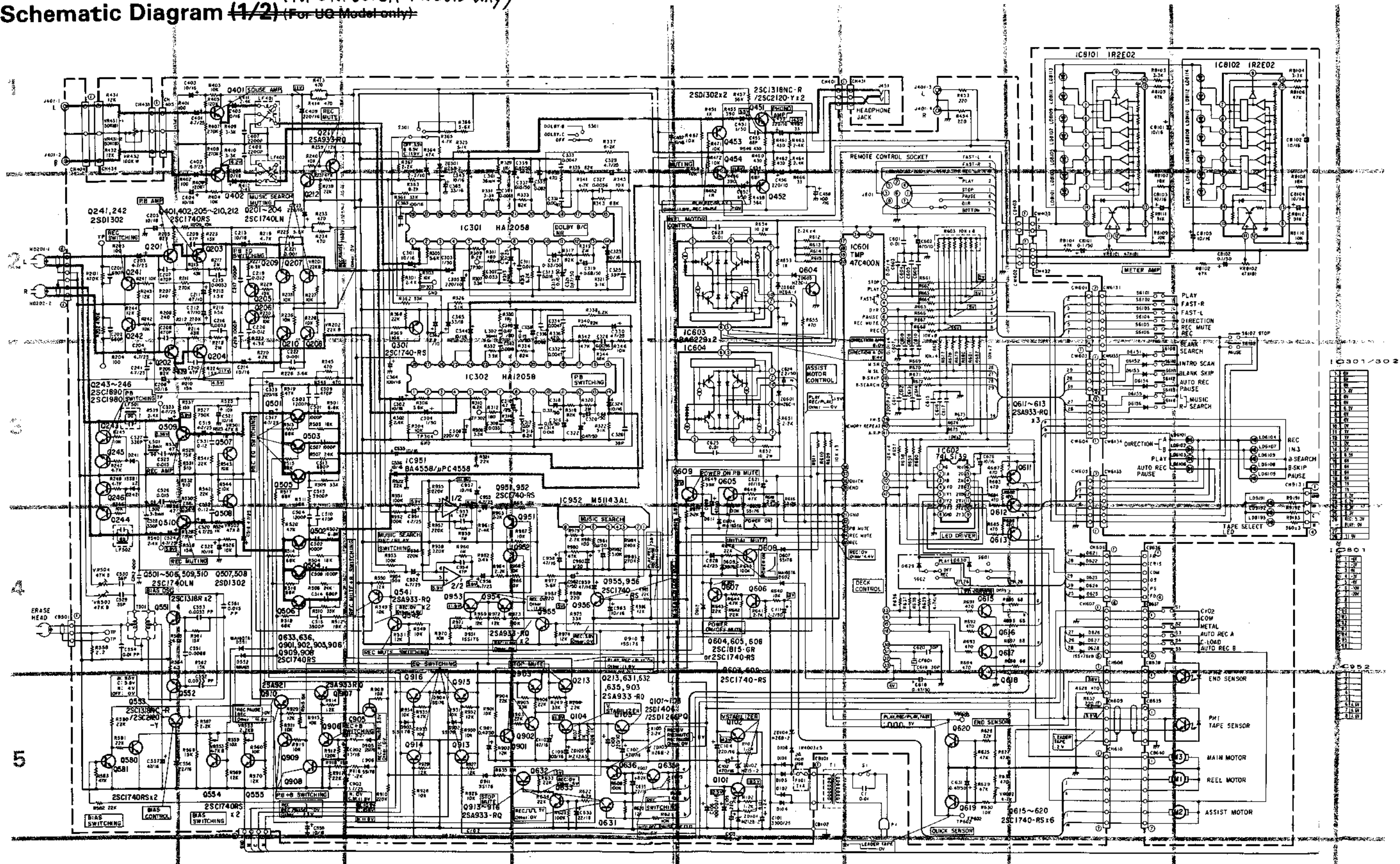
K-405

**Schematic Diagram** (For SK, UE, JA Models only)



**NOTES:**  
 1. All resistance values are in ohms. K = 1,000  
 2. All capacitance values are in microfarads. P = 1,000,000

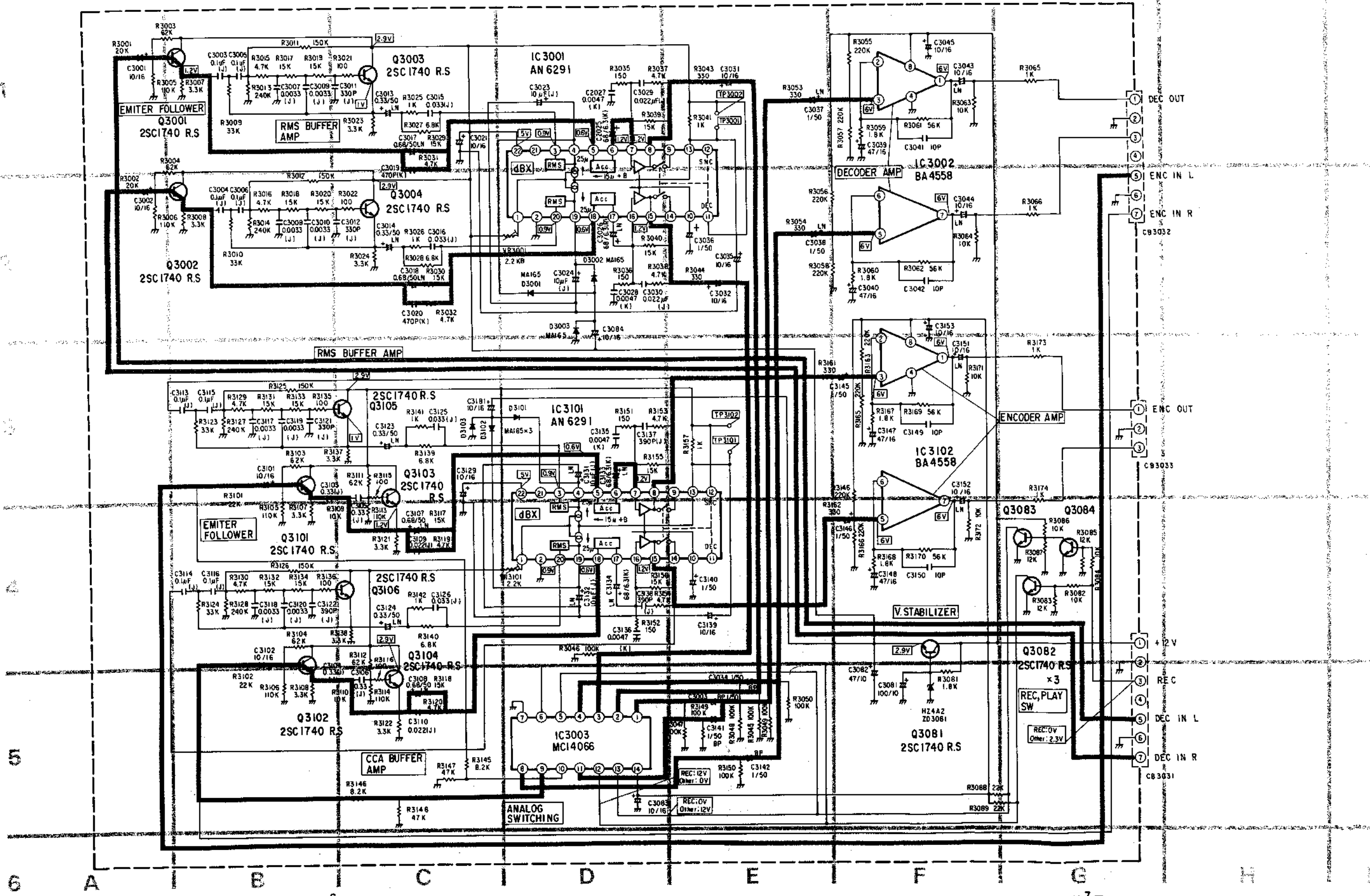
# Schematic Diagram (1/2) (For SK UC JA Models only)



- NOTES:
1. All resistance values are in ohms. K = 1,00
  2. All capacitance values are in microfarads.  $\mu = \frac{1}{1,000,000}$

# Schematic Diagram (2/2) (For UQ Model only)

- NOTES:  
 1. All resistance values are in ohms. K = 1,000  
 2. All capacitance values are in microfarads. P =  $\frac{1}{1,000,000}$



6

A

B

C

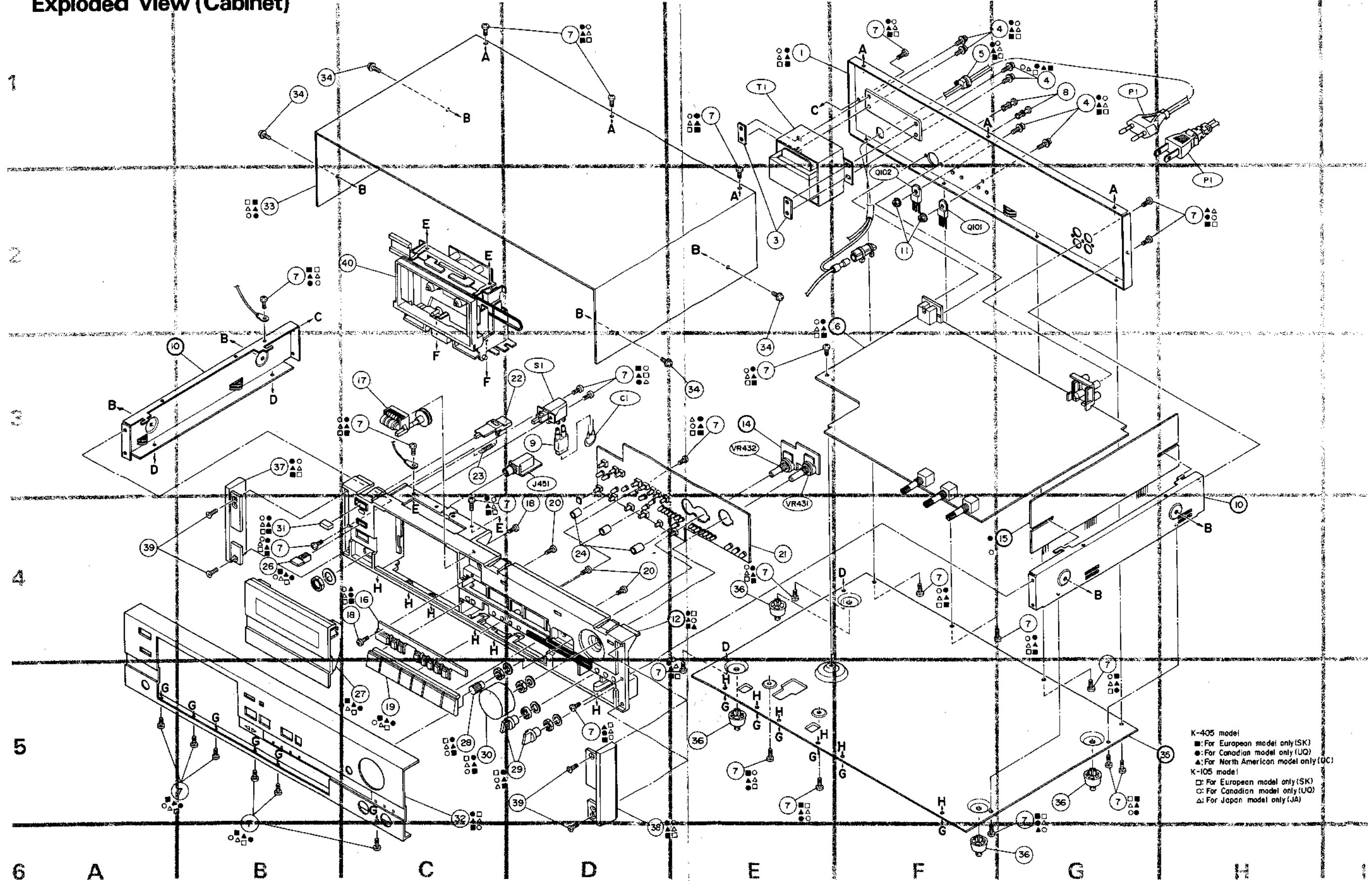
D

E

F

G

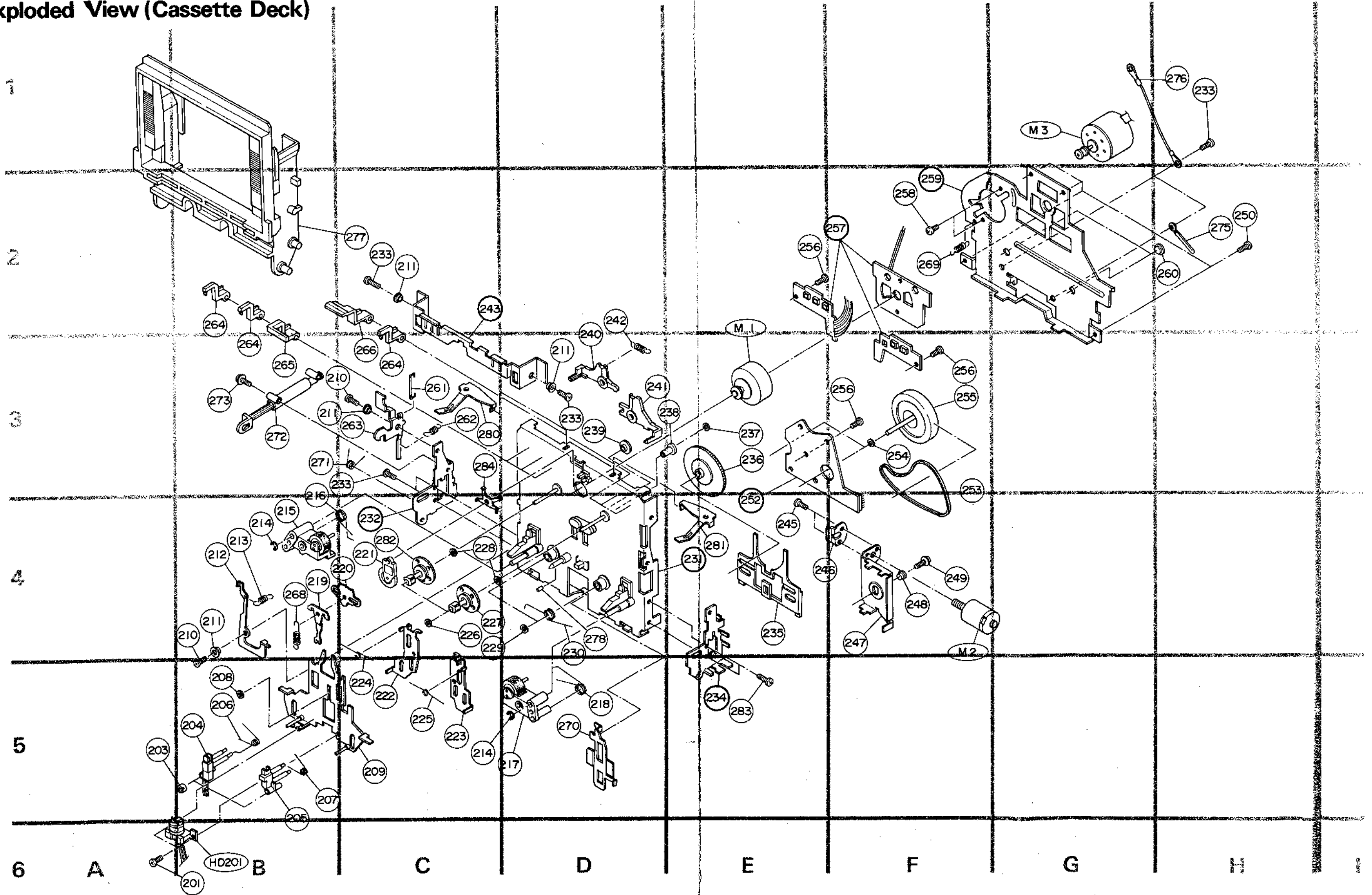
# Exploded View (Cabinet)

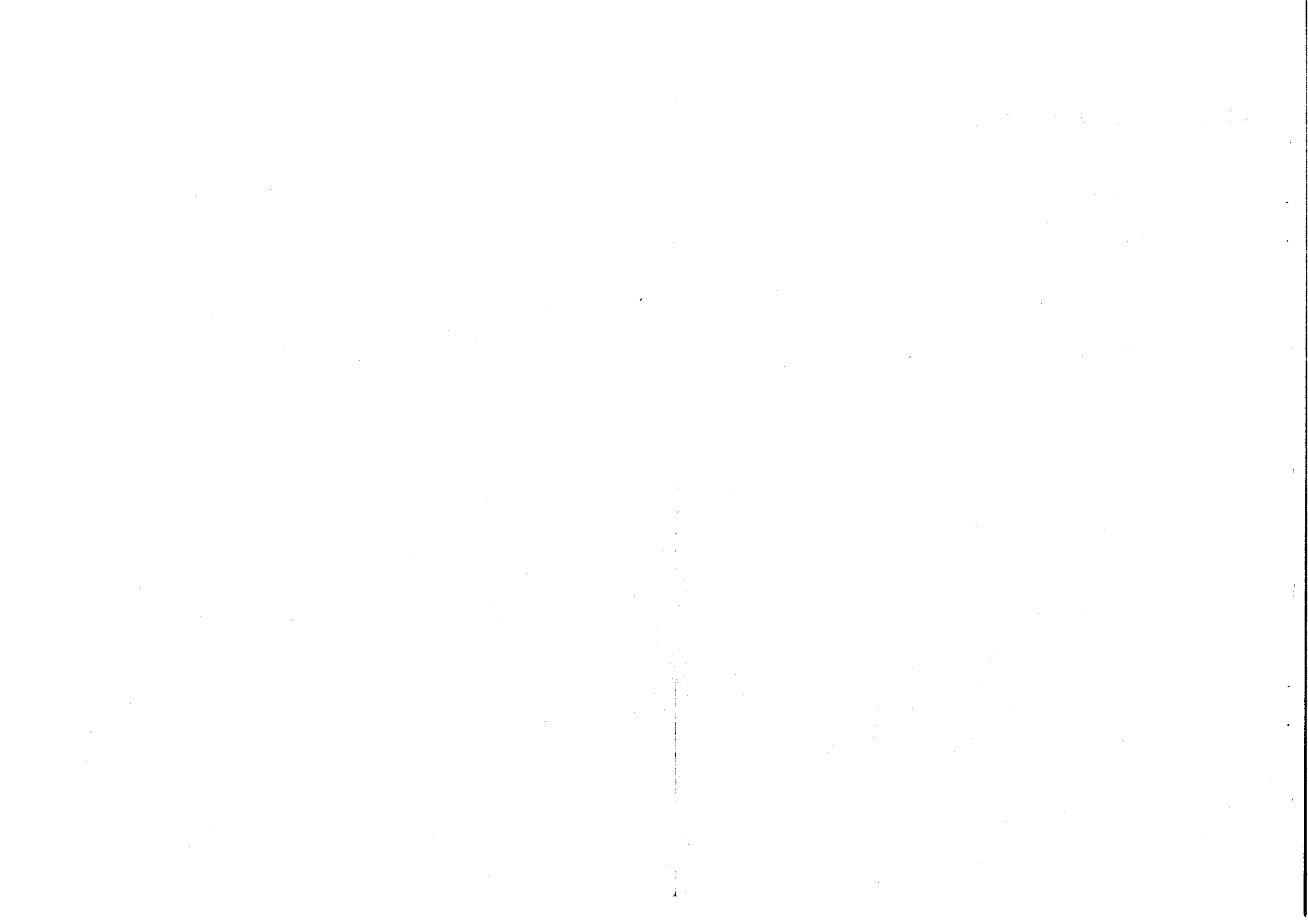


K-405 model  
■: For European model only (SK)  
●: For Canadian model only (UQ)  
▲: For North American model only (UC)  
K-105 model  
□: For European model only (SK)  
○: For Canadian model only (UQ)  
△: For Japan model only (JA)



### Exploded View (Cassette Deck)





# Electrical Parts List

Resistors (All resistors are carbon film, 1/4W, ±5% unless otherwise noted.)  
 uF = microfarads, pF = picofarads

Symbol No.	Part No.	Description	Symbol No.	Part No.	Description
<b>Connector P.C. Board</b>					
<b>Transistor/Switches</b>					
PH2	AZ12G-00	Photo Transistor & LED NJL5141E	Q205	48T55181F01	2SC1740-R, S
S1	UE13K-11	Switch, Tact KHN10902	or	48S43525F05	2SC1815-Y, GR
S2	UE13K-11	Switch, Tact KHN10902	Q206	48T55181F01	2SC1740-R, S
S3	UE13K-11	Switch, Tact KHN10902	or	48S43525F05	2SC1815-Y, GR
S4	UE13K-11	Switch, Tact KHN10902	Q207	48T55181F01	2SC1740-R, S
S5	UE13K-11	Switch, Tact KHN10902	or	48S43525F05	2SC1815-Y, GR
<b>Master P.C. Board</b>					
<b>IC's</b>					
IC301	51T67728F01	HA12058	Q208	48T55181F01	2SC1740-R, S
IC302	51T67728F01	HA12058	or	48S43525F05	2SC1814-Y, GR
IC601	51T68248F01	TMP47C400N-6361	Q209	48T55181F01	2SC1740-R, S
IC602	51T70538F01	HD74LS139	or	48S43525F05	2SC1815-Y, GR
IC603	51T70536F01	BA6229	Q210	48T55181F01	2SC1740-R, S
IC604	51T70536F01	BA6229	or	48S43525F05	2SC1815-Y, GR
IC951	51T65380F01	BA4558	Q211	48T55349F01	2SA933A-R, Q
or	51S43471U02	μPC4558C	or	48T51118F01	2SA1015-Y
IC952	51T67915F01	M51143AL	Q212	48T55181F01	2SC1740-R, S
<b>Transistors</b>			or	48S43525F05	2SC1815-Y, GR
Q103	48T58614F01	2SD1406	Q213	48T55349F01	2SA933A-R, Q
or	48T56031F01	2SD1266-P, Q	or	48T51118F01	2SA1015-Y
Q104	48S40832F03	2SC1318NC-R	Q241	48T57305F01	2SD1302-S, T
or	48T43015U01	2SC2120-Y	Q242	48T57305F01	2SD1302-S, T
Q201	48S47708F04	2SC1842-E	Q243	48S43394P01	2SC1890-E, F
or	48T70535F01	2SC1740-L, N	or	48S41196U03	2SC1980-T
Q202	48S47708F04	2SC1842-E	Q244	48S43394P01	2SC1890-E, F
or	48T70535F01	2SC1740-L, N	or	48S41196U03	2SC1980-T
Q203	48S47708F04	2SC1842-E	Q245	48S43394P01	2SC1890-E, F
or	48T70535F01	2SC1740-L, N	or	48S41196U03	2SC1980-T
Q204	48S47708F04	2SC1842-E	Q246	48S43394P01	2SC1890-E, F
or	48T70535F01	2SC1740-L, N	or	48S41196U03	2SC1980-T
			Q301	48T55181F01	2SC1740-R, S
			or	48S43525F05	2SC1815-Y, GR
			Q401	48T55181F01	2SC1740-R, S
			or	48S43525F05	2SC1815-Y, GR
			Q402	48T55181F01	2SC1740-R, S
			or	48S43525F05	2SC1815-Y, GR
			Q451	48S40832F03	2SC1318NC-R
			or	48T43015U01	2SC2120-Y
			Q452	48S40832F03	2SC1318NC-R
			or	48T43015U01	2SC2120-Y
			Q453	48T57305F01	2SD1302-S, T
			Q454	48T57305F01	2SD1302-S, T
			Q501	48T55181F01	2SC1740-R, S
			or	48S43525F05	2SC1815-Y, GR



Symbol No.	Part No.	Description
Q502 or Q503 or Q504 or	48T55181F01 48S43525F05 48T55181F01 48S43525F05 48T55181F01 48S43525F05	2SC1740-R, S 2SC1815-Y, GR 2SC1740-R, S 2SC1815-Y, GR 2SC1740-R, S 2SC1815-Y, GR
Q505 or Q506 or Q507	48T55181F01 48S43525F05 48T55181F01 48S43525F05 48T57305F01	2SC1740-R, S 2SC1815-Y, GR 2SC1740-R, S 2SC1815-Y, GR 2SD1302-S, T
Q508 Q509 or Q510 or	48T57305F01 48S47708F04 48T70535F01 48S47708F04 48T70535F01	2SD1302-S, T 2SC1842-E 2SC1740-L, N 2SC1842-E 2SC1740-L, N
Q541 or Q542 or Q551	48T55349F01 48T51118F01 48T55181F01 48S43525F05 48S40832F03	2SA933A-R, Q 2SA1015-Y 2SC1740-R, S 2SC1815-Y, GR 2SC1318NC-R
Q552 Q553 or Q554 or	48S40832F03 48S40832F03 48T43015U01 48T55181F01 48S43525F05	2SC1318NC-R 2SC1318NC-R 2SC2120-Y 2SC1740-R, S 2SC1815-Y, GR
Q555 or Q580 or Q581 or	48T55181F01 48S43525F05 48T55181F01 48S43525F05 48T55181F01 48S43525F05	2SC1740-R, S 2SC1815-Y, GR 2SC1740-R, S 2SC1815-Y, GR 2SC1740-R, S 2SC1815-Y, GR
Q604 or Q605 or Q606 or	48T55181F01 48S43525F05 48S43525F03 48T55181F01 48T55181F01 48S43525F05	2SC1740-R, S 2SC1815-Y, GR 2SC1815-GR 2SC1740-R, S 2SC1740-R, S 2SC1815-Y, GR
Q607 or Q608 or Q609 or	48T55181F01 48S43525F05 43S43525F03 48T55181F01 43S43525F03 48T55181F01	2SC1740-R, S 2SC1815-Y, GR 2SC1815-GR 2SC1740-R, S 2SC1815-GR 2SC1740-R, S

Symbol No.	Part No.	Description
Q611 or Q612 or Q613 or	48T55349F01 48T51118F01 48T55349F01 48T51118F01 48T55349F01 48T51118F01	2SA933A-R, Q 2SA1015-Y 2SA933A-R, Q 2SA1015-Y 2SA933A-R, Q 2SA1015-Y
Q615 or Q616 or Q617 or	48T55181F01 48S43525F05 48T55181F01 48S43525F05 48T55181F01 48S43525F05	2SC1740-R, S 2SC1815-Y, GR 2SC1740-R, S 2SC1815-Y, GR 2SC1740-R, S 2SC1815-Y, GR
Q618 or Q619 or Q620 or	48T55181F01 48S43525F05 48T55181F01 48S43525F05 48T55181F01 48S43525F05	2SC1740-R, S 2SC1815-Y, GR 2SC1740-R, S 2SC1815-Y, GR 2SC1740-R, S 2SC1815-Y, GR
Q631 or Q632 or Q633 or	48T55349F01 48T51118F01 48T55349F01 48T51118F01 48T55181F01 48S43525F05	2SA933A-R, Q 2SA1015-Y 2SA933A-R, Q 2SA1015-Y 2SC1740-R, S 2SC1815-Y, GR
Q635 or Q636 or Q901 or	48T55349F01 48T51118F01 48T55181F01 48S43525F05 48T55181F01 48S43525F05	2SA933A-R, Q 2SA1015-Y 2SC1740-R, S 2SC1815-Y, GR 2SC1740-R, S 2SC1815-Y, GR
Q902 or Q903 or Q905 or	48T55181F01 48S43525F05 48T55349F01 48T51118F01 48T55181F01 48S43525F05	2SC1740-R, S 2SC1815-Y, GR 2SA933A-R, Q 2SA1015-Y 2SC1740-R, S 2SC1815-Y, GR
Q906 or Q907 or Q908	48T55181F01 48S43525F05 48T55349F01 48T51118F01 48S47706F04	2SC1740-R, S 2SC1815-Y, GR 2SA933A-R, Q 2SA1015-Y 2SC1843-E
Q909 or Q910 or Q913 or	48T55181F01 48S43525F05 48T42941U01 48T42941U02 48T55349F01 48T51118F01	2SC1740-R, S 2SC1815-Y, GR 2SA921-S 2SA921-T 2SA933A-R, Q 2SA1015-Y

Symbol No.	Part No.	Description
Q914 or Q915 or Q916 or	48T55349F01 48T51118F01 48T55349F01 48T51118F01 48T55349F01 48T51118F01	2SA933A-R, Q 2SA1015-Y 2SA933A-R, Q 2SA1015-Y 2SA933A-R, Q 2SA1015-Y
Q951 or Q952 or Q953 or	48T55181F01 48S43525F05 48T55181F01 48S43525F05 48T55349F01 48T51118F01	2SC1740-R, S 2SC1815-Y, GR 2SC1740-R, S 2SC1815-Y, GR 2SA933A-R, Q 2SA1015-Y
Q954 or Q955 or Q956 or	48T55349F01 48T51118F01 48T55181F01 48S43525F05 48T55181F01 48S43525F05	2SA933A-R, Q 2SA1015-Y 2SC1740-R, S 2SC1815-Y, GR 2SC1740-R, S 2SC1815-Y, GR
<b>Diodes</b>		
D 101 D 102 D 103 D 104 D 106	48T55186F01 48T55186F01 48T55186F01 48T55186F01 48T55186F01	IN4003 IN4003 IN4003 IN4003 IN4003
D 241 D 242 D 551 or D 552 or	48T53429F01 48T53429F01 48T44813F01 48T58583F01 48T44813F01 48T58583F01	1SS81 1SS81 MA165TA SS176 MA165TA SS176
D 602 or D 604 or D 607 or	48T44813F01 48T58583F01 48T44813F01 48T58583F01 48T68764F03 48T51582F01	MA165TA SS176 MA165TA SS176 1S2473 MA-150
D 608 or D 609 or D 611 or	48T44813F01 48T58583F01 48T44813F01 48T58583F01 48T44813F01 48T58583F01	MA165TA SS176 MA165TA SS176 MA165TA SS176

Symbol No.	Part No.	Description
D621 or D622 or D623 or	48T44813F01 48T58583F01 48T44813F01 48T58583F01 48T44813F01 48T58583F01	MA165TA SS176 MA165TA SS176 MA165TA SS176
D624 or D625 or D626 or	48T44813F01 48T58583F01 48T44813F01 48T58583F01 48T44813F01 48T58583F01	MA165TA SS176 MA165TA SS176 MA165TA SS176
D627 or D628 or D630 or	48T44813F01 48T58583F01 48T44813F01 48T58583F01 48T44813F01 48T58583F01	MA165TA SS176 MA165TA SS176 MA165TA SS176
D902 or D903 or D904 or	48T44813F01 48T58583F01 48T44813F01 48T58583F01 48T44813F01 48T58583F01	MA165TA SS176 MA165TA SS176 MA165TA SS176
D905 or D906 or D910 or	48T44813F01 48T58583F01 48T44813F01 48T58583F01 48T44813F01 48T58583F01	MA165TA SS176 MA165TA SS176 MA165TA SS176
D911 or D912 D951 or	48T44813F01 48T58583F01 48S134816 48T44813F01 48T58583F01	MA165TA SS176 SI 1S1555 MA165TA SS176
ZD101 or ZD102 or ZD103 or	48T52739F74 48T56372F54 48T52739F77 48T56372F58 48T52739F38 48T56372F27	Zener, HZ12B-2 Zener, RD13E-B2 Zener, HZ15-2 Zener, RD15E-B3 Zener, HZ6B-2 Zener, RD5.6E-B3
ZD104 or ZD105 or ZD301 or	48T52739F38 48T56372F27 48T52739F72 48T56372F53 48T52739F38 48T56372F27	Zener, HZ6B-2 Zener, RD5.6E-B3 Zener, HZ12A-3 Zener, RD13E-B1 Zener, HZ6B-2 Zener, RD5.6E-B3

Symbol No.	Part No.	Description
ZD601 or ZD602 or ZD603 or	48T52739F40 48T56372F28 48T52739F34 48T56372F25 48T52739F04 48T56372F03	Zener, HZ6C-1 Zener, RD6.2E-B1 Zener, HZ6A-1 Zener, RD5.6E-B1 Zener, Zener, HZ2C-1 Zener, RD2.2E-C
<b>Inductors</b>		
L301 L302 L501 L502	24T47741F01 24T47741F01 24S41448F98 24S41448F98	36mH 36mH Radial 3900 $\mu$ H Radial 3900 $\mu$ H
<b>Transformer</b>		
T501	24T70526F01	OSC (K-405)
<b>Switches</b>		
• S301 ■ S301 S601	40T70531F01 40T70530F01 40T70530F01	Rotary SBM4048M Rotary SBM1023M Rotary, SBM1023N
<b>Jacks</b>		
J401 J601	09T70529F01 09T50261F01	Plate, Phone 4P (OSHI) Remote Control Socket
<b>Fuse</b>		
■ F101	65T42077U16	Semko T-1A
<b>Filters</b>		
CF601 LF401 LF402 LF501 LF502	91T70534F01 24T70527F01 24T70527F01 24T70528F01 24T70528F01	Ceramic (CSA 4.00MG) MPX (38K, 105K) MPX (38K, 105K) Bias (105K) Bias (105K)

Symbol No.	Part No.	Description
<b>Capacitors</b>		
C101 C102 C103 C104 C105	23S41198U77 23S41198U56 23S41198U56 23S40657F52 23S40657F52	Electrolytic 3300 $\mu$ F/25V Electrolytic 470 $\mu$ F/16V Electrolytic 470 $\mu$ F/16V Electrolytic 220 $\mu$ F/16V Electrolytic 220 $\mu$ F/16V
C106 C107 C108 C109 C110	23T58450F05 23S41198U55 23S40657F09 23S40657F14 23S40657F13	Electrolytic 0.01 $\mu$ F/16V Electrolytic 470 $\mu$ F/10V Electrolytic 220 $\mu$ F/10V Electrolytic 100 $\mu$ F/16V Electrolytic 47 $\mu$ F/16V
C111 C201 C202 C203 C204	23S40657F29 08T55260F47 08T55260F47 23T42478F09 23T42478F09	Electrolytic 2.2 $\mu$ F/50V Ceramic 680 pF Ceramic 680 pF Electrolytic 4.7 $\mu$ F/25V Electrolytic 4.7 $\mu$ F/25V
C205 C206 C207 C208 C209	23S40657F10 23S40657F10 08T55260F45 08T55260F45 08T55260F29	Electrolytic 10 $\mu$ F/16V Electrolytic 10 $\mu$ F/16V Ceramic 470 pF Ceramic 470 pF Ceramic 47 pF
C210 C211 C212 C213 C214	08T55260F29 23S40657F07 23S40657F07 23S40657F10 23S40657F10	Ceramic 47 pF Electrolytic 47 $\mu$ F/10V Electrolytic 47 $\mu$ F/10V Electrolytic 10 $\mu$ F/16V Electrolytic 10 $\mu$ F/16V
C215 C216 C217 C218 C219	08S40656F07 08S40656F07 08T55260F49 08T55260F49 08T57851F02	Mylar 3300 pF Mylar 3300 pF Ceramic 1000 pF Ceramic 1000 pF Polyester Film 0.012 $\mu$ F
C220 C221 C222 C223 C241	08T57851F02 08S40656F01 08S40656F01 23S40657F52 23S40657F16	Polyester Film 0.012 $\mu$ F Mylar 1000 pF Mylar 1000 pF Electrolytic 220 $\mu$ F/16V Electrolytic 4.7 $\mu$ F/25V
C242 C301 C302 C303 C304	08T55260F37 23T42478F05 23T42478F05 23T42478F24 23T42478F24	Ceramic 100 pF Electrolytic 10 $\mu$ F/16V Electrolytic 10 $\mu$ F/16V Electrolytic 1 $\mu$ F/50V Electrolytic 1 $\mu$ F/50V

K-405 (■ : For European model only (SK), ● : For Canadian model only (UQ), Others: Common

Symbol No.	Part No.	Description
C305	23S40657F09	Electrolytic 220 uF/10V
C306	23S40657F09	Electrolytic 220 uF/10V
C307	08T57851F07	TF 0.033 uF
C308	08T57851F07	TF 0.033 uF
C309	23S40657F16	Electrolytic 4.7 uF/25V
C310	23S40657F16	Electrolytic 4.7 uF/25V
C311	08T57851F01	Polyester Film 0.01 uF
C312	08T57851F01	Polyester Film 0.01 uF
C313	08T57851F04	Polyester Film 0.018 uF
C314	08T57851F04	Polyester Film 0.018 uF
C315	23T42478F19	Electrolytic 0.15 uF/50V
C316	23T42478F19	Electrolytic 0.15 uF/50V
C317	23T42478F21	Electrolytic 0.33 uF/50V
C318	23T42478F21	Electrolytic 0.33 uF/50V
C319	23T42478F23	Electrolytic 0.68 uF/50V
C320	23T42478F23	Electrolytic 0.68 uF/50V
C321	23S40657F27	Electrolytic 0.47 uF/50V
C322	23S40657F27	Electrolytic 0.47 uF/50V
C323	23S40657F10	Electrolytic 10 uF/16V
C324	23S40657F10	Electrolytic 10 uF/16V
C325	08T55260F27	Ceramic 39 pF
C326	08T55260F27	Ceramic 39 pF
C327	08S40656F10	Mylar 5600 pF
C328	08S40656F10	Mylar 5600 pF
C329	23S40657F16	Electrolytic 4.7 uF/25V
C330	23S40657F16	Electrolytic 4.7 uF/25V
C331	08S40656F09	Mylar 4700 pF
C332	08S40656F09	Mylar 4700 pF
C333	08S40656F09	Mylar 4700 pF
C334	08S40656F09	Mylar 4700 pF
C335	08T57851F12	TF 0.082 uF
C336	08T57851F12	TF 0.082 uF
C337	23T42478F19	Electrolytic 0.15 uF/50V
C338	23T42478F19	Electrolytic 0.15 uF/50V
C339	23S40657F27	Electrolytic 0.47 uF/50V
C340	23S40657F27	Electrolytic 0.47 uF/50V
C341	08S40656F04	Mylar 1800 pF
C342	08S40656F04	Mylar 1800 pF
C343	23T42478F05	Electrolytic 10 uF/16V
C344	23T42478F05	Electrolytic 10 uF/16V
C361	23S40657F11	Electrolytic 22 uF/16V
C362	23S40657F11	Electrolytic 22 uF/16V
C363	23S40657F14	Electrolytic 100 uF/16V
C364	23S40657F14	Electrolytic 100 uF/16V
C365	23S40657F12	Electrolytic 33 uF/16V

Symbol No.	Part No.	Description
C401	23S40657F16	Electrolytic 4.7 uF/25V
C402	23S40657F16	Electrolytic 4.7 uF/25V
C403	23S40657F10	Electrolytic 10 uF/16V
C404	23S40657F10	Electrolytic 10 uF/16V
C405	23S40657F10	Electrolytic 10 uF/16V
C406	23S40657F10	Electrolytic 10 uF/16V
C407	08T55260F54	Ceramic 2200 pF
C408	08T55260F54	Ceramic 2200 pF
C409	23S40657F52	Electrolytic 220 uF/16V
C451	23S40657F28	Electrolytic 1 uF/50V
C452	23S40657F28	Electrolytic 1 uF/50V
C453	08T55260F33	Ceramic 68 pF
C454	08T55260F33	Ceramic 68 pF
C455	23S40657F09	Electrolytic 220 uF/10V
C456	23S40657F09	Electrolytic 220 uF/10V
C457	23S40657F10	Electrolytic 10 uF/16V
C458	23S40657F14	Electrolytic 100 uF/16V
C501	08T55260F49	Ceramic 1000 pF
C502	08T55260F49	Ceramic 1000 pF
C503	08T55260F63	Ceramic 1200 pF
C504	08T55260F63	Ceramic 1200 pF
C507	08T55260F49	Ceramic 1000 pF
C508	08T55260F49	Ceramic 1000 pF
C509	08T55260F45	Ceramic 470 pF
C510	08T55260F45	Ceramic 470 pF
C513	08T55260F47	Ceramic 680 pF
C514	08T55260F47	Ceramic 680 pF
C515	08T55260F64	Ceramic 3900 pF
C516	08T55260F64	Ceramic 3900 pF
C517	23T42478F09	Electrolytic 4.7 uF/25V
C518	23T42478F09	Electrolytic 4.7 uF/25V
C519	23S40657F16	Electrolytic 4.7 uF/25V
C520	23S40657F16	Electrolytic 4.7 uF/25V
C521	23S40657F10	Electrolytic 10 uF/16V
C522	23S40657F10	Electrolytic 10 uF/16V
C523	23T42478F09	Electrolytic 4.7 uF/25V
C524	23T42478F09	Electrolytic 4.7 uF/25V
C525	08T57851F03	Polyester Film 0.015 uF
C526	08T57851F03	Polyester Film 0.015 uF
C527	08T55260F43	Ceramic 330 pF
C528	08T55260F43	Ceramic 330 pF
C529	08T55260F31	Ceramic 56 pF
C530	08T55260F31	Ceramic 56 pF
C531	08T57851F14	TF 0.12 uF
C532	08T57851F14	TF 0.12 uF
C533	23S40657F52	Electrolytic 220 uF/16V

Symbol No.	Part No.	Description
C535	23S40657F10	Electrolytic 10 uF/16V
C536	23S40657F10	Electrolytic 10 uF/16V
C551	08T52448F33	Polypropylene 6800 pF
C552	08T52448F25	Polypropylene 3300 pF
C553	08T52448F25	Polypropylene 3300 pF
C554	08T52448F37	Polypropylene 0.01 uF
C555	23S40657F10	Electrolytic 10 uF/16V
C556	23S40657F18	Electrolytic 22 uF/25V
C557	23S40657F13	Electrolytic 47 uF/16V
C561	08T52448F41	Polypropylene 0.015 uF
C601	08T55260F61	Ceramic 0.01 uF
C602	23S41198U55	Electrolytic 470 uF/10V
C603	08S44505P61	Ceramic 0.01 uF
C604	08S44505P61	Ceramic 0.01 uF
C605	08S44505P61	Ceramic 0.01 uF
C606	08S44505P61	Ceramic 0.01 uF
C607	08S44505P61	Ceramic 0.01 uF
C608	08S44505P61	Ceramic 0.01 uF
C609	08S44505P61	Ceramic 0.01 uF
C610	08S44505P61	Ceramic 0.01 uF
C611	08T55260F54	Ceramic 2200 pF
C612	08T55260F54	Ceramic 2200 pF
C613	08T55260F54	Ceramic 2200 pF
C614	08T55260F54	Ceramic 2200 pF
C615	08T55260F54	Ceramic 2200 pF
C616	08T55260F54	Ceramic 2200 pF
C617	08T55260F54	Ceramic 2200 pF
C618	23S40657F27	Electrolytic 0.47 uF/50V
C619	08T55260F24	Ceramic 30 pF
C620	08T55260F24	Ceramic 30 pF
C621	23S40657F10	Electrolytic 10 uF/16V
C623	08S44505P61	Ceramic 0.01 uF
C624	23T42477F18	Electrolytic 2.2 uF/50V
C625	08S44505P61	Ceramic 0.01 uF
C626	23S40657F10	Electrolytic 10 uF/16V
C628	23S40657F16	Electrolytic 4.7 uF/25V
C629	23S40657F07	Electrolytic 47 uF/10V
C631	23S40657F27	Electrolytic 0.47 uF/50V
C633	23S40657F11	Electrolytic 22 uF/16V
C635	23S40657F11	Electrolytic 22 uF/16V
C901	23S40657F27	Electrolytic 0.47 uF/50V
C902	23S40657F10	Electrolytic 10 uF/16V
C903	23S40657F16	Electrolytic 4.7 uF/25V
C951	23S40657F16	Electrolytic 4.7 uF/25V
C952	23S40657F16	Electrolytic 4.7 uF/25V

Symbol No.	Part No.	Description
C953	08T55260F29	Ceramic 47 pF
C954	08T55260F29	Ceramic 47 pF
C955	23S40657F16	Electrolytic 4.7 uF/25V
C956	23S40657F16	Electrolytic 4.7 uF/25V
C957	23S40657F10	Electrolytic 10 uF/16V
C958	23S40657F13	Electrolytic 47 uF/16V
C959	23S40657F13	Electrolytic 47 uF/16V
C960	23S40657F28	Electrolytic 1 uF/50V
C961	23T42478F18	Electrolytic 0.1 uF/50V
C962	08T57851F09	TF 0.047 uF
C963	23S40657F10	Electrolytic 10 uF/16V
<b>Resistors</b>		
R603	51T52333F05	Network 10K ohm x 8
R652	06T55179F17	Metal Film 10 ohm 2W
or	06T00007L17	Metal Film 10 ohm 2W
R654	06T55179F17	Metal Film 10 ohm 2W
or	06T00007L17	Metal Film 10 ohm 2W
VR201	18T52946F15	Variable 22K ohm
VR202	18T52946F15	Variable 22K ohm
VR501	18T52946F17	Variable 47K ohm
VR502	18T52946F17	Variable 47K ohm
VR503	18T52946F17	Variable 47K ohm
VR504	18T52946F17	Variable 47K ohm
VR553	18T52946F11	Variable 4.7K ohm
VR555	18T52946F09	Variable 2.2K ohm
VR602	18T52946F11	Variable 4.7K ohm
<b>DBX P.C. Board (For Canadian model only)</b>		
<b>IC's</b>		
IC3001	51T56606F01	AN6291 DBX
IC3002	51T65380F01	BA4558
or	51S43471U02	μPC4558C
IC3003	51T68999F01	BU4066B
or	51T47739F01	TC4066BP

Symbol No.	Part No.	Description
IC3101 IC3102 or	51T56606F01 51T65380F01 51S43471U02	AN6291 DBX BA4558 $\mu$ PC4558C
<b>Transistors</b>		
Q3001 or Q3002 or Q3003 or	48T55181F01 48S43525F05 48T55181F01 48S43525F05 48T55181F01 48S43525F05	2SC1740-R, S 2SC1815-Y, GR 2SC1740-R, S 2SC1815-Y, GR 2SC1740-R, S 2SC1815-Y, GR
Q3004 or Q3081 or Q3082 or	48T55181F01 48S43525F05 48T55181F01 48S43525F05 48T55181F01 48S43525F05	2SC1740-R, S 2SC1815-Y, GR 2SC1740-R, S 2SC1815-Y, GR 2SC1740-R, S 2SC1815-Y, GR
Q3083 or Q3084 or Q3101 or	48T55181F01 48S43525F05 48T55181F01 48S43525F05 48T55181F01 48S43525F05	2SC1740-R, S 2SC1815-Y, GR 2SC1740-R, S 2SC1815-Y, GR 2SC1740-R, S 2SC1815-Y, GR
Q3102 or Q3103 or Q3104 or	48T55181F01 48S43525F05 48T55181F01 48S43525F05 48T55181F01 48S43525F05	2SC1740-R, S 2SC1815-Y, GR 2SC1740-R, S 2SC1815-Y, GR 2SC1740-R, S 2SC1815-Y, GR
Q3105 or Q3106 or	48T55181F01 48S43525F05 48T55181F01 48S43525F05	2SC1740-R, S 2SC1815-Y, GR 2SC1740-R, S 2SC1815-Y, GR
<b>Diodes</b>		
D3001 D3002 D3003 D3101 D3102	48T44813F01 48T44813F01 48T44813F01 48T44813F01 48T44813F01	MA165TA MA165TA MA165TA MA165TA MA165TA

Symbol No.	Part No.	Description
D3103 ZD3081 or	48T44813F01 48T52739F17 48T56372F12	MA165TA Zener, HZ4A-2 Zener, RD3.6E-B1
<b>Capacitors</b>		
C3001 C3002 C3003 C3004 C3005	23S40657F10 23S40657F10 08T57851F13 08T57851F13 08T57851F13	Electrolytic 10 $\mu$ F/16V Electrolytic 10 $\mu$ F/16V TF 0.1 $\mu$ F TF 0.1 $\mu$ F TF 0.1 $\mu$ F
C3006 C3007 C3008 C3009 C3010	08T57851F13 08S40656F07 08S40656F07 08S40656F07 08S40656F07	TF 0.1 $\mu$ F Mylar 3300 pF Mylar 3300 pF Mylar 3300 pF Mylar 3300 pF
C3011 C3012 C3013 C3014 C3015	08T55260F43 08T55260F43 23T42478F21 23T42478F21 08T57851F07	Ceramic 330 pF Ceramic 330 pF Electrolytic 0.33 $\mu$ F/50V Electrolytic 0.33 $\mu$ F/50V TF 0.033 $\mu$ F
C3016 C3017 C3018 C3019 C3020	08T57851F07 23T42478F23 23T42478F23 08T55260F45 08T55260F45	TF 0.033 $\mu$ F Electrolytic 0.68 $\mu$ F/50V Electrolytic 0.68 $\mu$ F/50V Ceramic 470 pF Ceramic 470 pF
C3021 C3023 C3024 C3025 C3026	23S40657F10 23T71541F02 23T71541F02 23T71541F01 23T71541F01	Electrolytic 10 $\mu$ F/16V Electrolytic 10 $\mu$ F/16V Electrolytic 10 $\mu$ F/16V Electrolytic 68 $\mu$ F/10V Electrolytic 68 $\mu$ F/10V
C3027 C3028 C3029 C3030 C3031	08S40656F09 08S40656F09 08T57851F05 08T57851F05 23S40657F10	Mylar 4700 pF Mylar 4700 pF Polyester Film 0.022 $\mu$ F Polyester Film 0.022 $\mu$ F Electrolytic 10 $\mu$ F/16V
C3032 C3033 C3034 C3035 C3036	23S40657F10 23T42477F16 23T42477F16 23S40657F10 23S40657F28	Electrolytic 10 $\mu$ F/16V Electrolytic 1 $\mu$ F/10V Electrolytic 1 $\mu$ F/10V Electrolytic 10 $\mu$ F/16V Electrolytic 1 $\mu$ F/10V



Symbol No.	Part No.	Description
C3037	23T42478F24	Electrolytic 1 uF/50V
C3038	23T42478F24	Electrolytic 1 uF/50V
C3039	23S40657F13	Electrolytic 47 uF/16V
C3040	23S40657F13	Electrolytic 47 uF/16V
C3041	08T55260F13	Ceramic 10 pF
C3042	08T55260F13	Ceramic 10 pF
C3043	23T42478F05	Electrolytic 10 uF/16V
C3044	23T42478F05	Electrolytic 10 uF/16V
C3045	23S40657F10	Electrolytic 10 uF/16V
C3081	23S40657F08	Electrolytic 100 uF/10V
C3082	23S40657F13	Electrolytic 47 uF/16V
C3083	23S40657F10	Electrolytic 10 uF/16V
C3084	23S40657F10	Electrolytic 10 uF/16V
C3101	23S40657F10	Electrolytic 10 uF/16V
C3102	23S40657F10	Electrolytic 10 uF/16V
C3103	08T57851F19	TF 0.33 uF
C3104	08T57851F19	TF 0.33 uF
C3105	08T57851F19	TF 0.33 uF
C3106	08T57851F19	TF 0.33 uF
C3107	23T42478F23	Electrolytic 0.68 uF/50V
C3108	23T42478F23	Electrolytic 0.68 uF/50V
C3109	08T57851F05	Polyester Film 0.022 uF
C3110	08T57851F05	Polyester Film 0.022 uF
C3113	08T57851F13	TF 0.1 uF
C3114	08T57851F13	TF 0.1 uF
C3115	08T57851F13	TF 0.1 uF
C3116	08T57851F13	TF 0.1 uF
C3117	08S40656F07	Mylar 3300 pF
C3118	08S40656F07	Mylar 3300 pF
C3119	08S40656F07	Mylar 3300 pF
C3120	08S40656F07	Mylar 3300 pF
C3121	08T55260F43	Ceramic 330 pF
C3122	08T55260F43	Ceramic 330 pF
C3123	23T42478F21	Electrolytic 0.33 uF/50V
C3124	23T42478F21	Electrolytic 0.33 uF/50V
C3125	08T57851F07	TF 0.033 uF
C3126	08T57851F07	TF 0.033 uF
C3129	23S40657F10	Electrolytic 10 uF/16V
C3131	23T71541F02	Electrolytic 10 uF/16V
C3132	23T71541F02	Electrolytic 10 uF/16V
C3133	23T71541F01	Electrolytic 68 uF/10V
C3134	23T71541F01	Electrolytic 68 uF/10V
C3135	08S40656F09	Mylar 4700 pF
C3136	08S40656F09	Mylar 4700 pF
C3137	08T55260F44	Ceramic 390 pF
C3138	08T55260F44	Ceramic 390 pF

Symbol No.	Part No.	Description
C3139	23S40657F10	Electrolytic 10 uF/16V
C3140	23S40657F28	Electrolytic 1 uF/50V
C3141	23T42477F16	Electrolytic 1 uF/50V
C3142	23T42477F16	Electrolytic 1 uF/50V
C3145	23S40657F28	Electrolytic 1 uF/50V
C3146	23S40657F28	Electrolytic 1 uF/50V
C3147	23S40657F13	Electrolytic 47 uF/16V
C3148	23S40657F13	Electrolytic 47 uF/16V
C3149	08T55260F13	Ceramic 10 pF
C3150	08T55260F13	Ceramic 10 pF
C3151	23T42478F05	Electrolytic 10 uF/16V
C3152	23T42478F05	Electrolytic 10 uF/16V
C3153	23S40657F10	Electrolytic 10 uF/16V
C3181	23S40657F10	Electrolytic 10 uF/16V
<b>Resistors</b>		
VR3001	18T52946F09	Variable 2.2K ohm
VR3101	18T52946F09	Variable 2.2K ohm
<b>Key Switch P.C. Board</b>		
<b>IC's</b>		
IC8101	51T70539F01	IR2E02
IC8102	51T70539F01	IR2E02
<b>Diodes</b>		
D6151	48T44813F01	MA165TA
or	48T58583F01	SS176
D6152	48T44813F01	MA165TA
or	48T58583F01	SS176
D6153	48T44813F01	MA165TA
or	48T58583F01	SS176

Symbol No.	Part No.	Description
D6154 or D6155 or D6156 or	48T448 13F01 48T58583F01 48T448 13F01 48T58583F01 48T448 13F01 48T58583F01	MA165TA SS176 MA165TA SS176 MA165TA SS176
LD6101 LD6102 LD6103 LD6104 LD6105	48T72233F01 48T72233F01 48T72233F01 48T666 16F02 48T60488F01	LED, SLR-54MG3M (GRN) LED, SLR-54MG3M (GRN) LED, SLR-54MG3M (GRN) LED, SLR-54VR3 (RED) LED, SLR-54DU3 (AMB)
LD6106 LD6107 LD6108 LD6109 LD8101	48T72159F01 48T72159F01 48T72159F01 48T72159F01 48T72160F01	LED, SLR-40DU3F LED, SLR-40DU3F LED, SLR-40DU3F LED, SLR-40DU3F LED, SLR-40VR3F
LD8102 LD8103 LD8104 LD8105 LD8106	48T72160F01 48T72160F01 48T72160F01 48T72160F01 48T72160F01	LED, SLR-40VR3F LED, SLR-40VR3F LED, SLR-40VR3F LED, SLR-40VR3F LED, SLR-40VR3F
LD8107 LD8108 LD8109 LD8110 LD8111	48T72159F01 48T72159F01 48T72159F01 48T72159F01 48T72159F01	LED, SLR-40DU3F LED, SLR-40DU3F LED, SLR-40DU3F LED, SLR-40DU3F LED, SLR-40DU3F
LD8112 LD8113 LD8114 LD9191 LD9192	48T72159F01 48T72159F01 48T72159F01 48T60488F01 48T60488F01	LED, SLR-40DU3F LED, SLR-40DU3F LED, SLR-40DU3F LED, SLR-54DU3 (AMB) LED, SLR-54DU3 (AMB)
LD9193	48T60488F01	LED, SLR-54DU3 (AMB)
<b>Switches</b>		
S6101 S6102 S6103 S6104 S6105	40T70532F01 40T70532F01 40T70532F01 40T70532F01 40T70532F01	Tact (KHH, GRAY) Tact (KHH, GRAY) Tact (KHH, GRAY) Tact (KHH, GRAY) Tact (KHH, GRAY)

Symbol No.	Part No.	Description
S6106 S6107 S6108 S6109 S6110	40T70532F01 40T70532F01 40T70532F01 40T70532F01 40T70532F01	Tact (KHH, GRAY) Tact (KHH, GRAY) Tact (KHH, GRAY) Tact (KHH, GRAY) Tact (KHH, GRAY)
S6111 S6112 S6113 S6114	40T70532F01 40T70532F01 40T70532F01 40T70532F01	Tact (KHH, GRAY) Tact (KHH, GRAY) Tact (KHH, GRAY) Tact (KHH, GRAY)
<b>Capacitors</b>		
C8101 C8102 C8103 C8104 C8105	23T57422F09 23T57422F09 23T57422F09 23T57422F09 23T57422F09	Electrolytic 10 $\mu$ F/16V Electrolytic 10 $\mu$ F/16V Electrolytic 10 $\mu$ F/16V Electrolytic 10 $\mu$ F/16V Electrolytic 10 $\mu$ F/16V
C8107 C8108	23T57422F01 23T57422F01	Electrolytic 0.1 $\mu$ F/50V Electrolytic 0.1 $\mu$ F/50V
<b>Resistors</b>		
VR8101 VR8102	18T52946F17 18T52946F17	Variable 47K ohm Variable 47K ohm
<b>Miscellaneous</b>		
C1 HD201 J451 M1 M2  M3 PH1 Q101 or Q102 or	08T57437F09 F257-055 09T66672F01 F064-133 F064-142  F064-141 F258-036 48T58614F01 48T56031F01 48T58614F01 48T56031F01	Capacitor, Ceramic 0.01 $\mu$ F Assembly, Turning Heal Jack, Headphone Assembly, Reel Motor Assembly, Assist Motor  Assembly, Main Motor Assembly, Sensor Transistor, 2SD1406 Transistor, 2SD1266-P, $\Omega$ Transistor, 2SD1406 Transistor, 2SD1266-P, $\Omega$

Symbol No.	Part No.	Description	Symbol No.	Part No.	Description
VR431	18T70525F01	Volume, Rotary K162P 50K ohm-B			
VR432	18T70524F01	Volume, Rotary K161M 100K ohm			
■ T1	25T70523F01	Trans, Power			
● T1	25T71350F01	Trans, Power			
▲ T1	25T70522F01	Trans, Power			
□ T1	25T70523F01	Trans, Power			
○ T1	25T71350F01	Trans, Power			
△ T1	25T70521F01	Trans, Power			
■ P1	28T43812P03	Plug, AC Cord			
● P1	28T40916U01	Plug, AC Cord			
▲ P1	28T40916U01	Plug, AC Cord			
□ P1	28T43812P03	Plug, AC Cord			
○ P1	28T40916U01	Plug, AC Cord			
△ P1	28T41871U01	Plug, AC Cord			
S1	40T56950F01	Switch, Power SDL1P (ASF)			

K-405 (■ : For European model only (SK), ● : For Canadian model only (UQ), Others: Common

# Cabinet Assembly Parts List

Note: ※ The parts whose parts numbers are not entered will not be supplied.

Symbol No.	Index	Part No.	Description	Symbol No.	Index	Part No.	Description
■	1	15D70547F01	Cover, Rear	■	12	※	Assembly, Front Frame
●	1	15D70547F02	Cover, Rear	●	12	※	Assembly, Front Frame
▲	1	15D70547F02	Cover, Rear	▲	12	※	Assembly, Front Frame
□	1	15D70547F04	Cover, Rear	□	12	※	Assembly, Front Frame
○	1	15D70547F05	Cover, Rear	○	12	※	Assembly, Front Frame
△	1	15D70547F03	Cover, Rear	△	12	※	Assembly, Front Frame
■	3	07A70548F01	Support, Trans Nut	■	13	※	Assembly, Headphone P.C. Board
■	4	03C40121T17	Screw, W/Double Washer (M3 x 8)	■	14	※	Assembly, Volume P.C. Board
●	4	03C40121T13	Screw, W/Double Washer (M3 x 16)	●	15	※	Assembly, DBX P.C. Board
▲	4	03C40121T13	Screw, W/Double Washer (M3 x 16)	○	15	※	Assembly, DBX P.C. Board
□	4	03C40121T13	Screw, W/Double Washer (M3 x 16)	■	16	36B70552F01	Knob, Function
○	4	03C40121T17	Screw, W/Double Washer (M3 x 8)	●	16	36B70552F01	Knob, Function
△	4	03C40121T13	Screw, W/Double Washer (M3 x 16)	▲	16	36B70552F01	Knob, Function
■	5	43B41625J02	Support, Cord	□	16	36B70552F02	Knob, Function
●	5	43B41625J01	Support, Cord	○	16	36B70552F02	Knob, Function
▲	5	43B41625J01	Support, Cord	△	16	36B70552F02	Knob, Function
□	5	43B41625J02	Support, Cord	17	72T70550F01	Tape Counter	
○	5	43B41625J01	Support Cord	18	03S71031F02	Screw, Bind (M2.6 x 8)	
△	5	43B41625J01	Support, Cord	■	19	01V71200F44	Assembly, Logic Knob
■	6	※	Assembly, Master P.C. Board	●	19	01V71200F44	Assembly, Logic Knob
●	6	※	Assembly, Master P.C. Board	▲	19	01V71200F44	Assembly, Logic Knob
▲	6	※	Assembly, Master P.C. Board	□	19	01V71800F61	Assembly, Logic Knob
□	6	※	Assembly, Master P.C. Board	○	19	01V71800F61	Assembly, Logic Knob
○	6	※	Assembly, Master P.C. Board	△	19	01V71800F61	Assembly, Logic Knob
△	6	※	Assembly, Master P.C. Board	20	03S71031F01	Screw, Bind (M2 x 6)	
■	7	03S71031F04	Screw, Bind (M3 x 8)	21	01V71200F45	Assembly, Key Switch P.C. Board	
●	7	03S71031F04	Screw, Bind (M3 x 8)	22	45A70553F01	Lever, Eject	
▲	7	03S71031F04	Screw, Bind (M3 x 8)	23	41A45559F01	Spring, Eject	
□	7	03S44205G38	Screw, Bind (M3 x 6)	24	43A61758F01	Space, Lamp 1011-UL	
○	7	03S71031F04	Screw, Bind (M3 x 8)	■	26	36A56639F02	Knob, Power 1171-2
△	7	03S44205G38	Screw, Bind (M3 x 6)	●	26	36A56639F02	Knob, Power 1171-2
8	05B41635J02	Rivet, Push	▲	26	36A56639F02	Knob, Power 1171-2	
9	43T53136F01	Bush, Capacitor TP150-301	□	26	36A67330F01	Knob, Power 1171-2	
10	※	Chassis, Side	○	26	36A67330F01	Knob, Power 1171-2	
11	02B47353F02	Nut, Hex Flange (M3)	△	26	36A67330F01	Knob, Power 1171-2	
			■	27	01V71200F48	Assembly, Door Cover	
			●	27	01V71200F48	Assembly, Door Cover	
			▲	27	01V71200F48	Assembly, Door Cover	
			□	27	01V71800F58	Assembly, Door Cover	

K-405 model (■ : For European model only (SK), ● : For Canadian model only (UQ), Others: Common  
 ▲ : For North American model only (UC))  
 K-105 model (□ : For European model only (SK), ○ : For Canadian model only (UQ),  
 △ : For Japan model only (JA))

Note: \* The parts whose parts numbers are not entered will not be supplied.

Symbol No.	Index	Part No.	Description	Symbol No.	Index	Part No.	Description
○ 27		01V71800F58	Assembly, Door Cover	○ 37		07B70554F01	Frame Side Panel (L)
△ 27		01V71800F58	Assembly, Door Cover	△ 37		07B70554F01	Frame Side Panel (L)
■ 28		36A70560F02	Knob, Rotary	■ 38		07B67093F03	Frame Side Panel (R)
● 28		36A70560F02	Knob, Rotary	● 38		07B67093F03	Frame Side Panel (R)
▲ 28		36A70560F02	Knob, Rotary	▲ 38		07B67093F03	Frame Side Panel (R)
□ 28		36A70620F01	Knob, Rotary	□ 38		07B70555F01	Frame Side Panel (R)
○ 28		36A70620F01	Knob, Rotary	○ 38		07B70555F01	Frame Side Panel (R)
△ 28		36A70620F01	Knob, Rotary	△ 38		07B70555F01	Frame Side Panel (R)
■ 29		36A56005F02	Knob, Control	39		03S71031F06	Screw, Countersink (M3 x 12)
● 29		36A56005F02	Knob, Control				
▲ 29		36A56005F02	Knob, Control	40		B1T68327F01	Deck, Cassette (FW87E010)
□ 29		36A56005F03	Knob, Control				
○ 29		36A56005F03	Knob, Control				
△ 29		36A56005F03	Knob, Control				
■ 30		36A55234F02	Knob, Control				
● 30		36A55234F02	Knob, Control				
▲ 30		36A55234F02	Knob, Control				
□ 30		36A55234F03	Knob, Control				
○ 30		36A55234F03	Knob, Control				
△ 30		36A55234F03	Knob, Control				
■ 31		36A45474F07	Knob, Eject				
● 31		36A45474F07	Knob, Eject				
▲ 31		36A45474F07	Knob, Eject				
□ 31		36A45474F04	Knob, Eject				
○ 31		36A45474F04	Knob, Eject				
△ 31		36A45474F04	Knob, Eject				
■ 32		01V71200F47	Assembly, Front Panel				
● 32		01V71900F98	Assembly, Front Panel				
▲ 32		01V71900F98	Assembly, Front Panel				
□ 32		01V71800F59	Assembly, Front Panel				
○ 32		01V73300F33	Assembly, Front Panel				
△ 32		01V73100F65	Assembly, Front Panel				
■ 33		15C70608F01	Cover, Top				
▲ 33		15C70608F01	Cover, Top				
● 33		15C70608F01	Cover, Top				
□ 33		15C70608F03	Cover, Top				
○ 33		15C70608F03	Cover, Top				
△ 33		15C70608F03	Cover, Top				
34		03S40036U01	Screw, W/Washer (M4 x 8)				
35		*	Cover, Bottom				
36		75A60070F01	Pad, Rubber				
■ 37		07B67093F02	Frame Side Panel (L)				
● 37		07B67093F02	Frame Side Panel (L)				
▲ 37		07B67093F02	Frame Side Panel (L)				
□ 37		07B70554F01	Frame Side Panel (L)				

K-405 model (■ : For European model only (SK), ● : For Canadian model only (UQ), ▲ : For North American model only (UC))  
 K-105 model (□ : For European model only (SK), ○ : For Canadian model only (UQ), △ : For Japan model only (JA))

Others: Common

## Cassette Deck Assembly Parts List

Symbol No.	Index	Part No.	Description	Symbol No.	Index	Part No.	Description
201		FC114-23	Screw, W/Washer (M2 x 5)	243		*	Arm, Detector
203		FD30C-21	Nut, Adjustment	245		FG141-20	Screw, W/Washer (M2 x 3.5)
205		FD27R-21	Tape, Guide	246		FC33M-22	Spring, Thrust
206		FK20A-13	Spring, Adjustment (L)	247		FC33D-21	Bracket, Assist Motor (R)
207		FK20B-13	Spring, Adjustment (R)	248		FK20M-14	Bracket, Spring
208		MM113-11	Ball, Steel	249		UG13V-11	Screw, Tapping
209		F012-084	Assembly, Plate Head	250		UG12H-14	Screw, Wave (M2.6 x 8)
210		KG194-12	Screw, Pan (M3 x 6)	252		*	Assembly, Detector P.C. Board
211		FM296-11	Spacer	253		FF15E-12	Belt, Main
212		FC33V-25	Arm, Eject Prevention (L)	254		FJ111-30	Poly., Slider (M2.6)
213		FK20D-12	Spring, Eject Prevention	255		FR18B-13	Assembly, F/W FHR
214		KG111-19	Ring, E	256		UG12H-11	Screw, Wave (M2 x 6)
215		F014-086	Assembly, Pinch Roller	257		*	Assembly, Connector
216		FK21A-11	Spring, Pinch Roller (L)	258		UG11S-11	Screw, W/Washer (M2.6 x 3.5)
217		F014-085	Assembly, Pinch Roller	259		*	Bracket, Motor
218		FK20Y-11	Spring, Pinch Roller (R)	260		FM177-22	Spacer, Flywheel
219		FC33F-21	Spring, Pull	261		FK20N-11	Link, Connection
220		FD28C-22	Plate C/R Slide	262		FK20C-13	Spring, Eject Arm
221		F017-043	Assembly, Idler	263		FC33W-14	Arm, Eject (L)
222		FC34R-12	Base, Slide (L)	264		F244-013	Assembly, Rec. Detector
223		FC35D-12	Base, Slide (R)	265		F246-015	Assembly, Metal Detector
224		FK20F-17	Spring, SB (L)	266		F245-017	Assembly, Pack Detector
225		FK20G-14	Spring, SB (R)	268		FK20T-15	Spring, CR Slide
226		FJ111-17	Poly, Slider	269		FK21T-11	Spring, Earth
227		F123-037	Assembly, Take Up Reel	270		FD29V-21	Lead, Holder
228		UJ12P-11	Poly Slider (M2.1)	271		FK21G-11	Spring, Door
229		FJ141-11	Washer, Oil Shield (M2.5)	272		FP472-11	Assembly, Dumper
230		FK20H-15	Spring, H, B	273		UG12R-11	Screw, Tap Tite
231		*	Assembly, Chassis	275		F139-013	Lug
232		*	Bracket, Dumper (L)	276		WG29L-01	Lead, Earth
233		KG189-11	Screw, Pan (M3 x 5)	277		FD31L-11	Assembly, Frame Door
234		*	Bracket, Dumper (R)	278		UT11R-11	Reflector
235		FD27K-21	Slide, Changer	280		FC35F-11	Spring, Cassette Holder (L)
236		F061-019	Assembly, Gear	281		FC35E-11	Spring, Cassette Holder (R)
237		FJ123-14	Luminer	282		F105-027	Assembly, Reel
238		FD27M-21	Gear, Worm	283		KG194-46	Screw, Tap Tite (M3 x 4)
239		FD27L-21	Gear, Idler	284		FC39P-11	Spring, Brake
240		FD29N-22	Lever, Brake (L)				
241		FD29P-22	Lever, Brake (R)				
242		FK20R-12	Spring, Brake				

**Note:** \* The parts whose parts numbers are not entered will not be supplied.



## Packing Assembly Parts List

Symbol No.	Part No.	Description
■ 101	01V71200F49	Assembly, Pamphlet
● 101	01V73300F30	Assembly, Pamphlet
▲ 101	01V71900F97	Assembly, Pamphlet
□ 101	01V71800F60	Assembly, Pamphlet
○ 101	01V73300F35	Assembly, Pamphlet
△ 101	01V73100F67	Assembly, Pamphlet (K-105)
101-1	28T57397F01	Plug, Output
or	28T70621F01	Plug, Output
■ 101-2	68P70001F01	Owner's Manual
● 101-2	68P70001F01	Owner's Manual
▲ 101-2	68P70001F51	Owner's Manual
□ 101-2	68P70001F44	Owner's Manual
○ 101-2	68P70001F44	Owner's Manual
△ 101-2	68P70001F66	Owner's Manual
102	56B40230G23	Sack, Polyethylene
■ 103	56S60482F93	Carton, Packing
● 103	56S60482F93	Carton, Packing
▲ 103	56S60482F93	Carton, Packing
□ 103	56S71001F10	Carton, Packing
○ 103	56S71001F10	Carton, Packing
△ 103	56S60482F95	Carton, Packing
104	56C70563F01	Tray, Packing

Symbol No.	Part No.	Description
<b>Labels</b>		
■	54B44257U01	Volt (220V)
●	54B44257U08	Volt (120V)
○	54B44257U08	Volt (120V)
	54B42124G08	Serial No.
	54B42124G02	Date Cord
■	54B57610F11	Serial No.
●	54B57610F34	Serial No.
▲	54B57610F34	Serial No.
□	54B57610F11	Serial No.
○	54B57610F34	Serial No.
●	54A57559F01	Side Caution
▲	54A57559F01	Side Caution
○	54A57559F01	Side Caution
●	54A57559F02	Bottom Caution
▲	54A57559F02	Bottom Caution
○	54A57559F02	Bottom Caution
●	54A44553G01	CSA
○	54A44553G01	CSA
●	54C44558J02	LL, NO
○	54C44558J02	LL, NO

K-405 model (■ : For European model only (SK), ● : For Canadian model only (UQ),  
 ▲ : For North American model only (UC))  
 Others: Common  
 K-105 model (□ : For European model only (SK), ○ : For Canadian model only (UQ),  
 △ : For Japan model only (JA))

# Destination's Parts List

Symbol No.	Description	POWER SOURCE					
		K-405			K-105		
		SK ■	UQ ●	UC ▲	SK □	UQ ○	JA △
		220V	120V	120V	220V	120V	100V
	Europe	Canada	North America	Europe	Canada	Japan	
1	Cover, Rear	15D70547F01	15D70547F02	15D70547F02	15D70547F04	15D70547F05	15D70547F03
4	Screw	03C40121T17	03C40121T13	03C40121T13	03C40121T13	03C40121T17	03C40121T13
5	Support, Cord	43B41625J02	43B41625J01	43B41625J01	43B41625J02	43B41625J01	43B41625J01
7	Screw	03S71031F04	03S71031F04	03S71031F04	03S44205G38	03S71031F04	03S44205G38
16	Knob, Function	36B70552F01	36B70552F01	36B70552F01	36B70552F02	36B70552F02	36B70552F02
19	Assembly, Logic Knob	01V71200F44	01V71200F44	01V71200F44	01V71800F61	01V71800F61	01V71800F61
26	Knob, Power	36A56639F02	36A56639F02	36A56639F02	36A67330F01	36A67330F01	36A67330F01
27	Assembly, Door Cover	01V71200F48	01V71200F48	01V71200F48	01V71800F58	01V71800F58	01V71800F58
28	Knob, Rotary	36A70560F02	36A70560F02	36A70560F02	36A70620F01	36A70620F01	36A70620F01
29	Knob, Control	36A56005F02	36A56005F02	36A56005F02	36A56005F03	36A56005F03	36A56005F03
30	Knob, Control	36A55234F02	36A55234F02	36A55234F02	36A55234F03	36A55234F03	36A55234F03
31	Knob, Eject	36A45474F07	36A45474F07	36A45474F07	36A45474F04	36A45474F04	36A45474F04
32	Assembly, Front Panel	01V71200F47	01V71900F98	01V71900F98	01V71800F59	01V73300F33	01V73100F65
33	Cover, Top	15C70608F01	15C70608F01	15C70608F01	15C70608F03	15C70608F03	15C70608F03
37	Frame Side Panel	07B67093F02	07B67093F02	07B67093F02	07B70554F01	07B70554F01	07B70554F01
38	Frame Side Panel	07B67093F03	07B67093F03	07B67093F03	07B70555F01	07B70555F01	07B70555F01
101	Assembly, Pamphlet	01V71200F49	01V73300F30	01V71900F97	01V71800F60	01V73300F35	01V73100F67
101-2	Owners, Manual	68P70001F01	68P70001F01	68P70001F51	68P70001F44	68P70001F44	68P70001F66
103	Carton, Packing Label, Volt	56S60482F93 54B44257U01	56S60482F93 54B44257U08	56S60482F93 Not Used	56S71001F10 Not Used	56S71001F10 54B44257U08	56S60482F95 Not Used
	Label, Serial No.	54B57610F11	54B57610F34	54B57610F34	54B57610F11	54B57610F34	Not Used
	Label, Caution	Not Used	54A57559F01	54A57559F01	Not Used	54A57559F01	Not Used
	Label, Caution	Not Used	54A57559F02	54A57559F02	Not Used	54A57559F01	Not Used
	Label, CSA	Not Used	54A44553G01	Not Used	Not Used	54A44553G01	Not Used
	Label, LL No.	Not Used	54C44558J02	Not Used	Not Used	54C44558J02	Not Used

K-405 model (■ : For European model only (SK), ● : For Canadian model only (UQ), Others: Common)

▲ : For North American model only (UC)

K-105 model (□ : For European model only (SK), ○ : For Canadian model only (UQ),

△ : For Japan model only (JA))



## **LUX CORPORATION, JAPAN**

2-3, 1-Chome, Minami-Yukigaya, Ohta-ku, Tokyo 145, JAPAN  
Phone: 03-726-6211 Telex: 2466953LUXMAN Facsimile: 03-728-7609