

NAD **SERVICE**
MANUAL

MONITOR SERIES

1000

STEREO PREAMPLIFIER

NAD-1000 CONTENTS

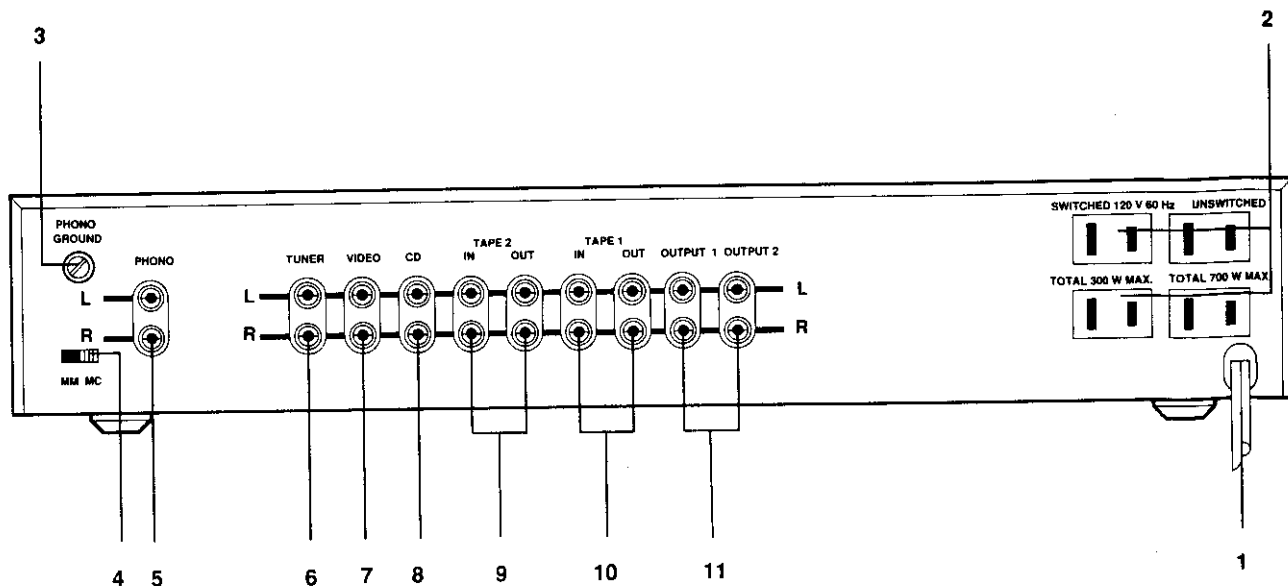
REAR / FRONT PANEL CONNECTIONS	PAGE 3
SPECIFICATIONS	PAGE 4
EXPLODED VIEW	PAGE 5-6
SCHEMATIC DIAGRAM	PAGE 7-8
PCB LAYOUT AND COMPONENT LOCATION	PAGE 9-10
PARTS LIST	PAGE 11-13
PACKING DIAGRAM	PAGE 14

REAR PANEL CONNECTIONS

- 1. AC LINE CORD
- 4. MM/MC SELECTOR
- 7. VIDEO SOUND INPUT
- 10. TAPE 1 INPUT/OUTPUT

- 2. AC OUTLETS
- 5. PHONO INPUT
- 8. CD INPUT
- 11. PREAMP OUTPUTS

- 3. PHONO GROUND
- 6. TUNER INPUT
- 9. TAPE 2 INPUT/OUTPUT



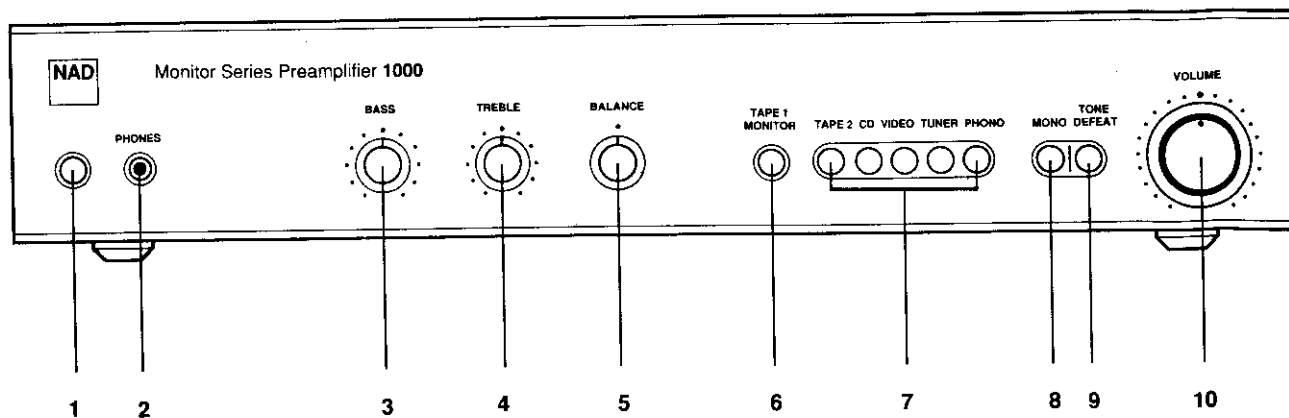
FRONT PANEL CONNECTIONS

- 1. POWER
- 5. BALANCE
- 9. TONE DEFEAT

- 2. PHONES
- 6. TAPE 1 MONITOR
- 10. VOLUME

- 3. BASS
- 7. INPUT SELECTOR

- 4. TREBLE
- 8. MONO



NAD 1000 MONITOR SERIES PREAMPLIFIER

SPECIFICATIONS

Measured in accordance with EIA Standard RS-490 (IHF A-202).

PHONO INPUT

Input impedance (R and C)	MM and MC:	47 k Ω + 200 pF
Input sensitivity ref. 0.5 V	1 kHz MM:	1.5 mV
	MC:	0.1 mV
Input overload at 20 Hz/1 kHz/20 kHz	MM:	20 mV/200 mV/1700 mV
	MC:	1.3 mV/13 mV/100 mV
Signal/Noise ratio (A-weighted with cartridge connected)	MM:	76 dB ref. 5 mV
	MC:	76 dB ref. 0.5 mV
THD (20 Hz - 20 kHz) and IM dist.		<0.04%
RIAA accuracy		\pm 0.5 dB

LINE LEVEL INPUTS (CD, Video, Tuner, Tape)

Input impedance (R and C)	20 k Ω + 450 pF
Input sensitivity ref. 0.5 V	80 mV
Maximum input signal	>10 V
Signal/Noise ratio, A-weighted (20 Hz - 20 kHz in tone defeat mode)	96 dB ref. 0.5 V
Frequency response	\pm 0.2 dB
Infrasonic filter (fixed)	-3 dB at 10 Hz 18 dB/octave
THD	0.01%

LINE LEVEL OUTPUTS

Output impedance	Pre-amp	220 ohms
	Tape	Source Z + 3200 ohms
	Phones	120 ohms
Maximum output level	Pre-amp	>12 V
	Tape	>10 V
	Phones	>8 V into 600 ohms >250 mV into 8 ohms

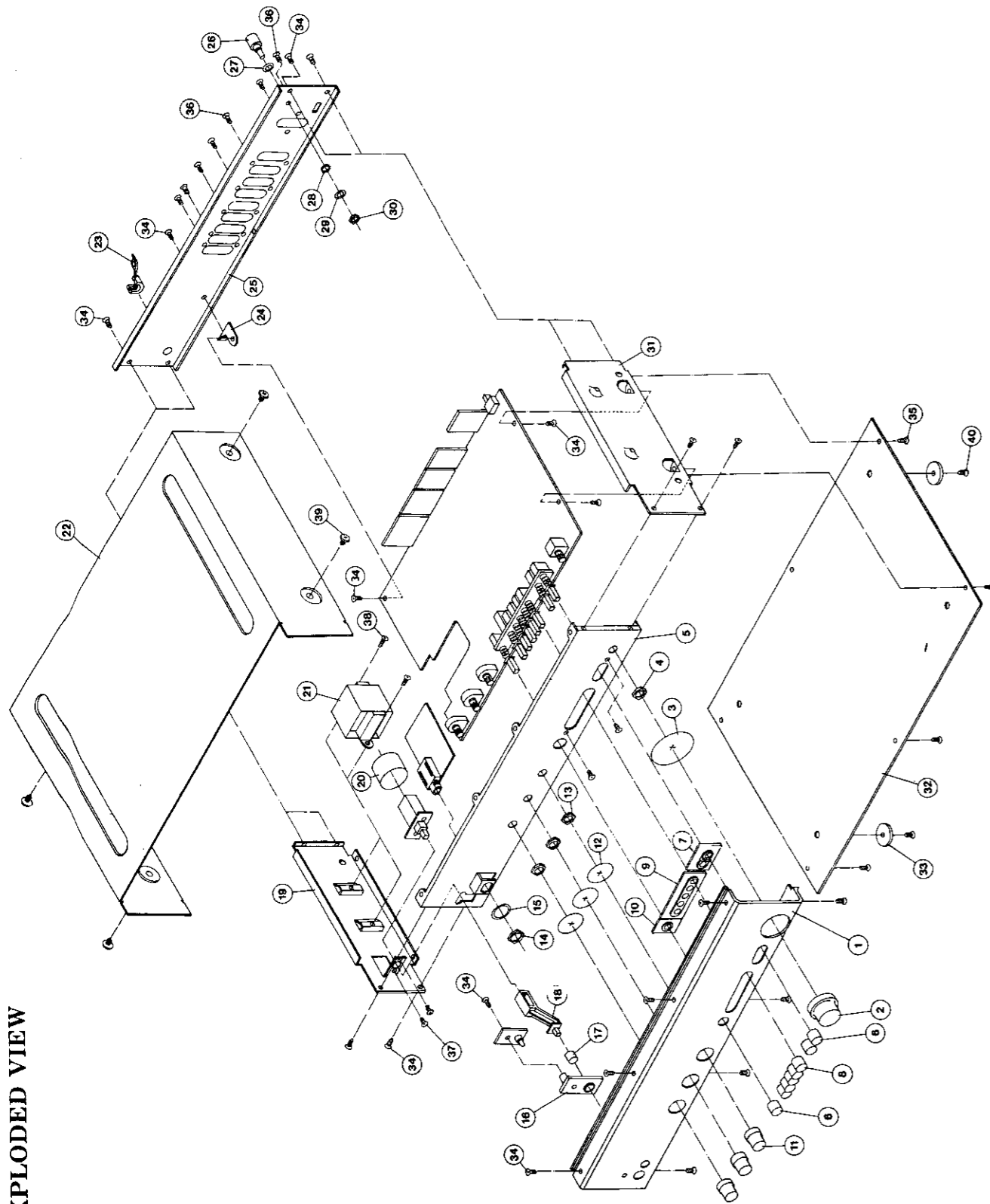
CONTROLS

Treble	\pm 7 dB at 10 kHz
Bass	\pm 10 dB at 50 Hz

PHYSICAL SPECIFICATIONS

Dimensions (Length x Width x Depth)	43.0 x 26.3 x 8.1 cm (16.0 x 10.5 x 3.25 in.)
Net Weight	3.7 kg (8lb 1 oz.)
Shipping Weight	4.4 kg (9lb 11 oz.)
Power Consumption	17 W at 120, 220 or 240 VAC 50/60 Hz

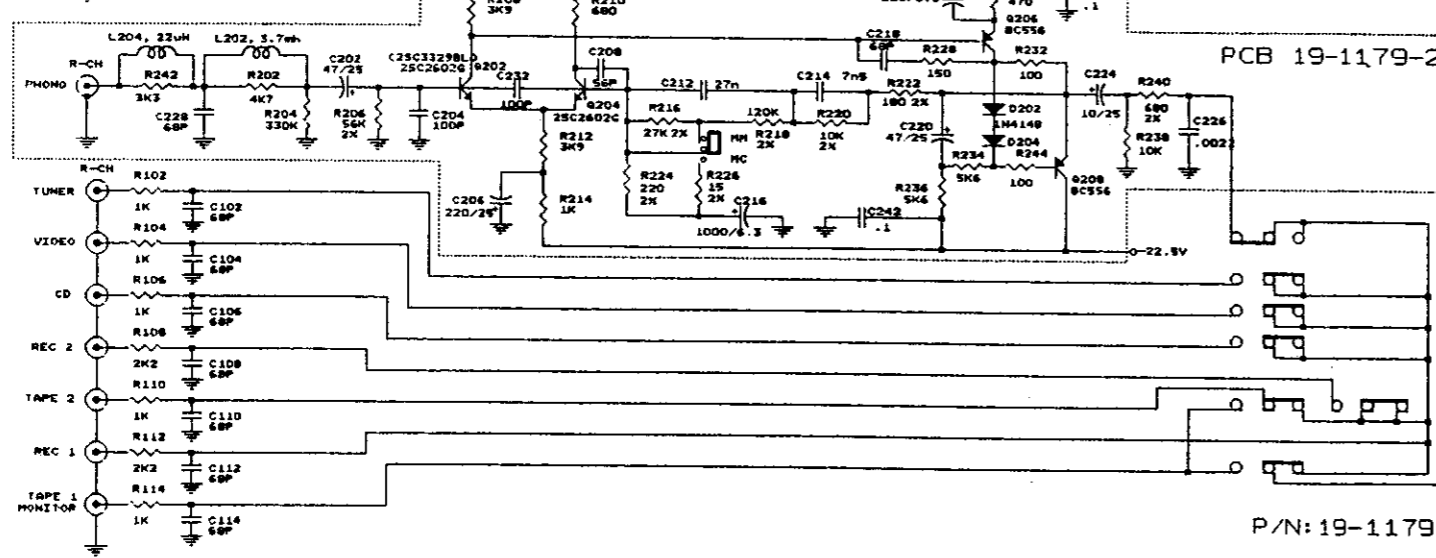
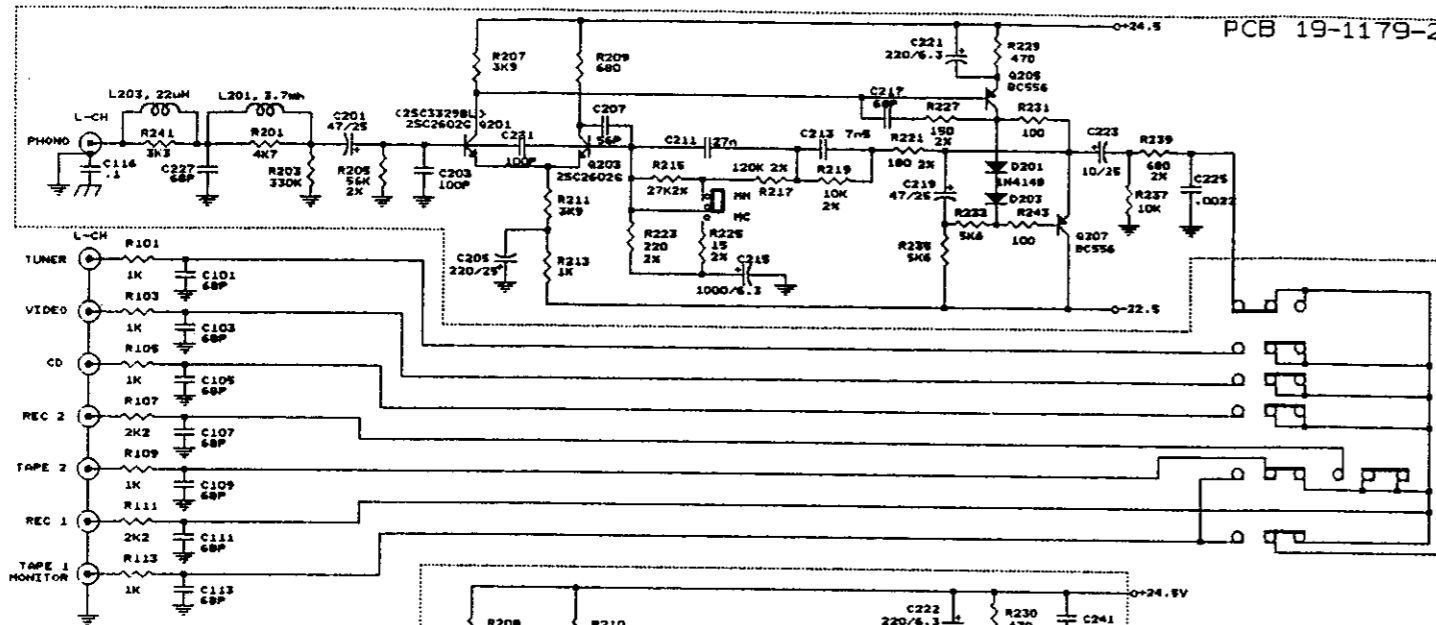
EXPLODED PARTS LIST



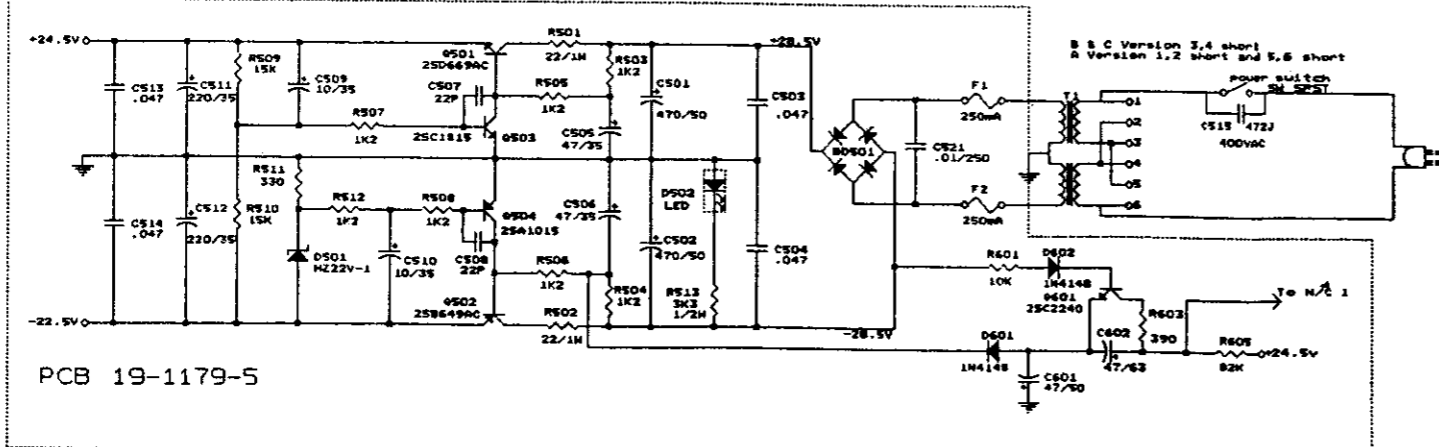
EXPLODED VIEW

1	11-8377	FRONT PANEL	NAD 1000
2	12-3113	KNOB	VOLUME/7100 5541537900
3	12-9003	FELT RING	L550D037H01 50Øx0.5
5	11-6116	FRONT CHASSIS	NAD 1000
6	12-3110	BUTTON BLACK	MONO, TONE DEF, MONITOR
7	13-8221-3	BEZEL 2 HOLE	L704C032H21
8	12-3110-1	BUTTON GRAY	TU, PH, TV, CD, TA2
9	13-8224	BEZEL 5 HOLE	NAD 1000
10	13-8221-2	BEZEL 1 HOLE	L704C032H11
11	12-3129	KNOB	BASS, TREBLE, BALANCE
12	12-9002	FELT RING	L550D037H02 30Øx0.5
16	13-8221-1	BEZEL POWER	L704C032H01
17	12-3148	BUTTON GREEN	P-021
18	12-1083	POWER LINK	1171300001
19	11-6117	FRAME L	L547B030H01
20	12-7103	TUBE/SVGS-UL	SVGS-UL, 30Ø, 60mm, 1 DIA
21	29-2064	TRANSFORMER	Universal/PX-1914
22	50-1034	COVER TOP	L703A004H01
23	14-5003	BUSHINGS	4RF-5
24	11-2345	"L" BRACKET	NAD 1000
25	11-8378-1	REAR PANEL	US CN/ (120V) NAD 1000
25	11-8378-2	REAR PANEL	WG, EU, SA/ (220V) NAD 1000
25	11-8378-3	REAR PANEL	UK, AS/ (240V) NAD 1000
26	15-2037	GND BOLT	L531D018H01
26	15-2037-1	GND NUT	L670D002H01
27	15-2037-3	STOP WASHER	10Ø, 4Ø, 1mm
28	15-2037-5	GEAR WASHER	
29	15-2037-4	CONNECT WASHER	B3.5Ø, S1.5Ø, 1.5mm
30	15-2037-2	BOLT NUT M3.5	L670D004H01
31	11-6118	FRAME R	L547B031H01
32	11-6119	COVER BOTTOM	L580B007H01
33	28-1044	A562	RUBBER-FOOT
34	S2B03+I06SL20	TAPPING SCREW	T3x6 BLACK
35	S2B03+I06SZ20	TAPPING SCREW	T3x6 COLOR
36	S6B03+I08SL20	TAPPING SCREW	T3x8 BLACK
37	S1B03+I06SL20	MACHINE SCREW	M3x6 BLACK
38	S2J03+I06SL20	TAPPING SCREW	T3x6 W/WASHER BLACK
39	S1K04+I06SL20	TAPPING SCREW	T3x6 W/WASHER BLACK
40	S1B04+I08SL20	MACHINE SCREW	M4x8 BLACK

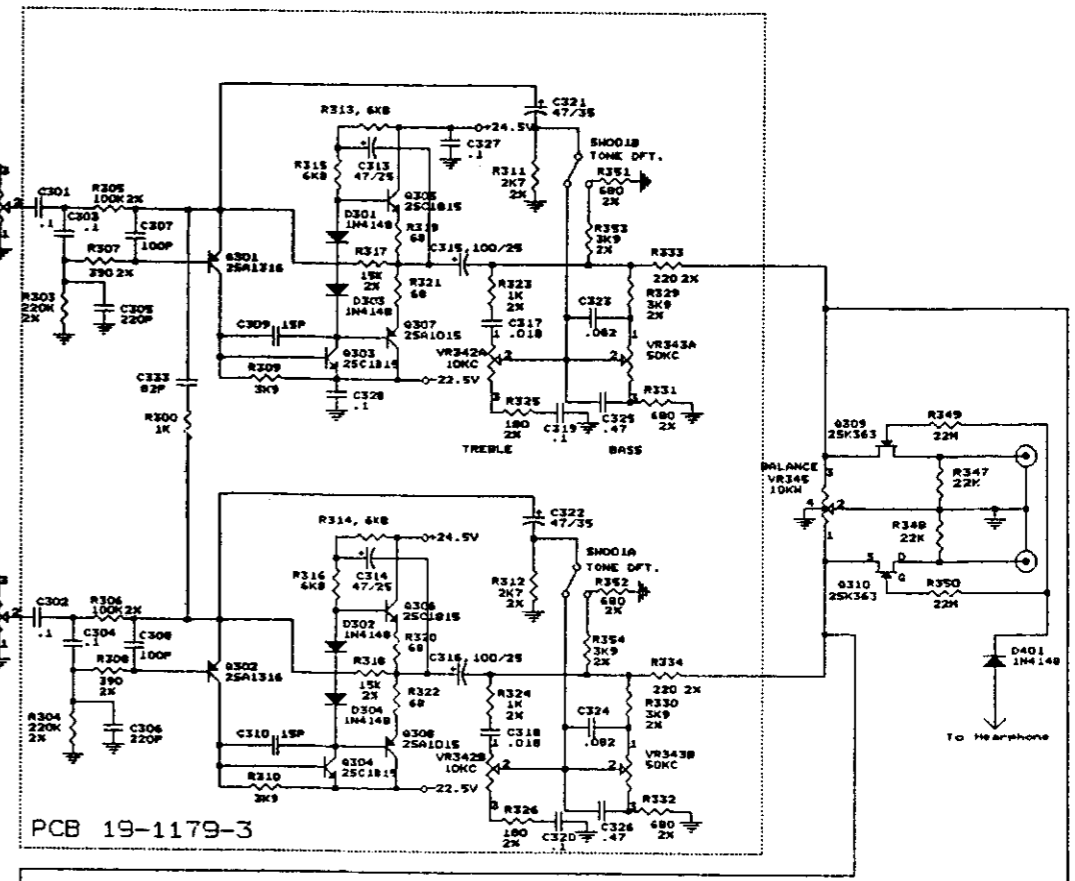
SCHEMATIC DIAGRAM



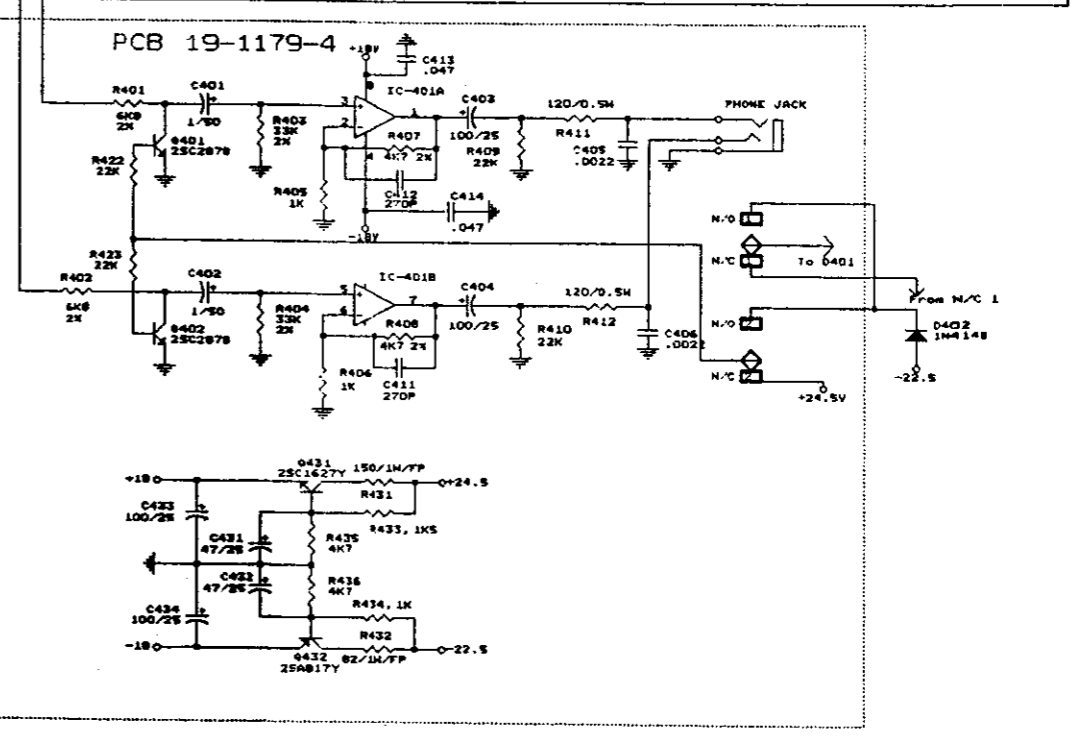
P/N: 19-1179



PCB 19-1179-5



PCB 19-1179-3



PCB 19-1179-4

PCB LAYOUT AND COMPONENT LOCATION

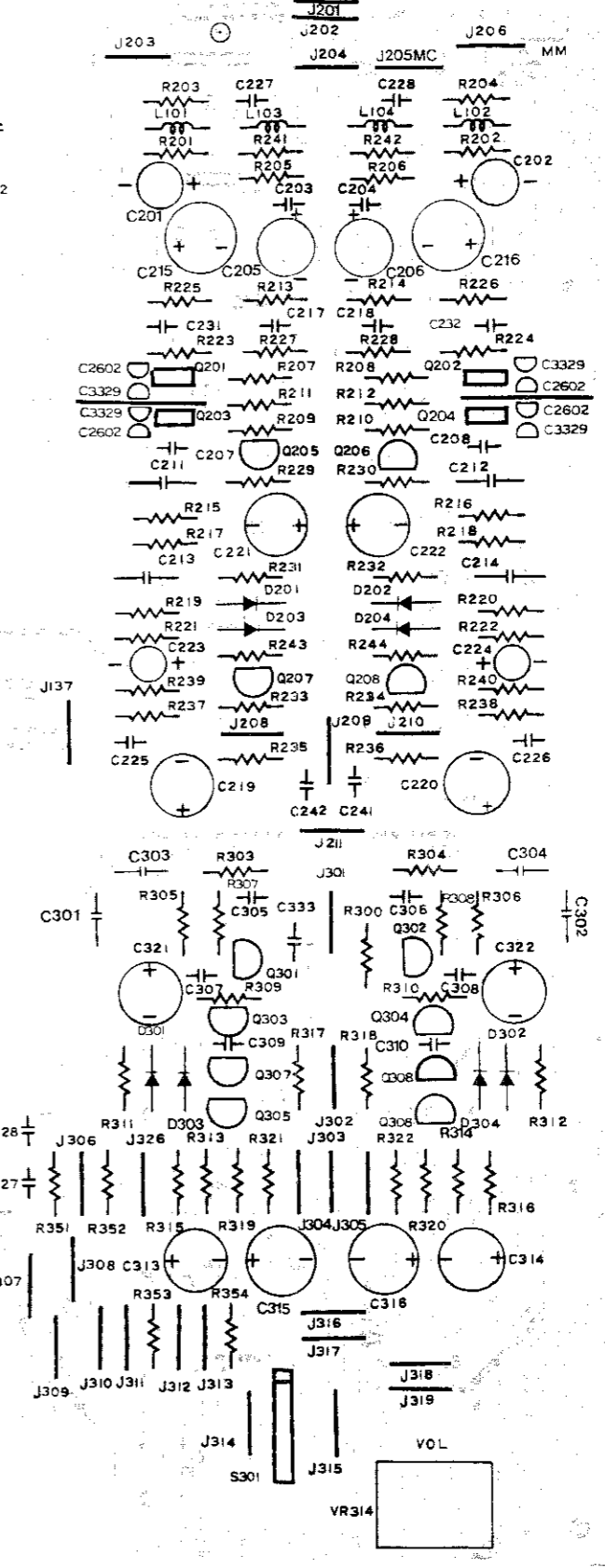
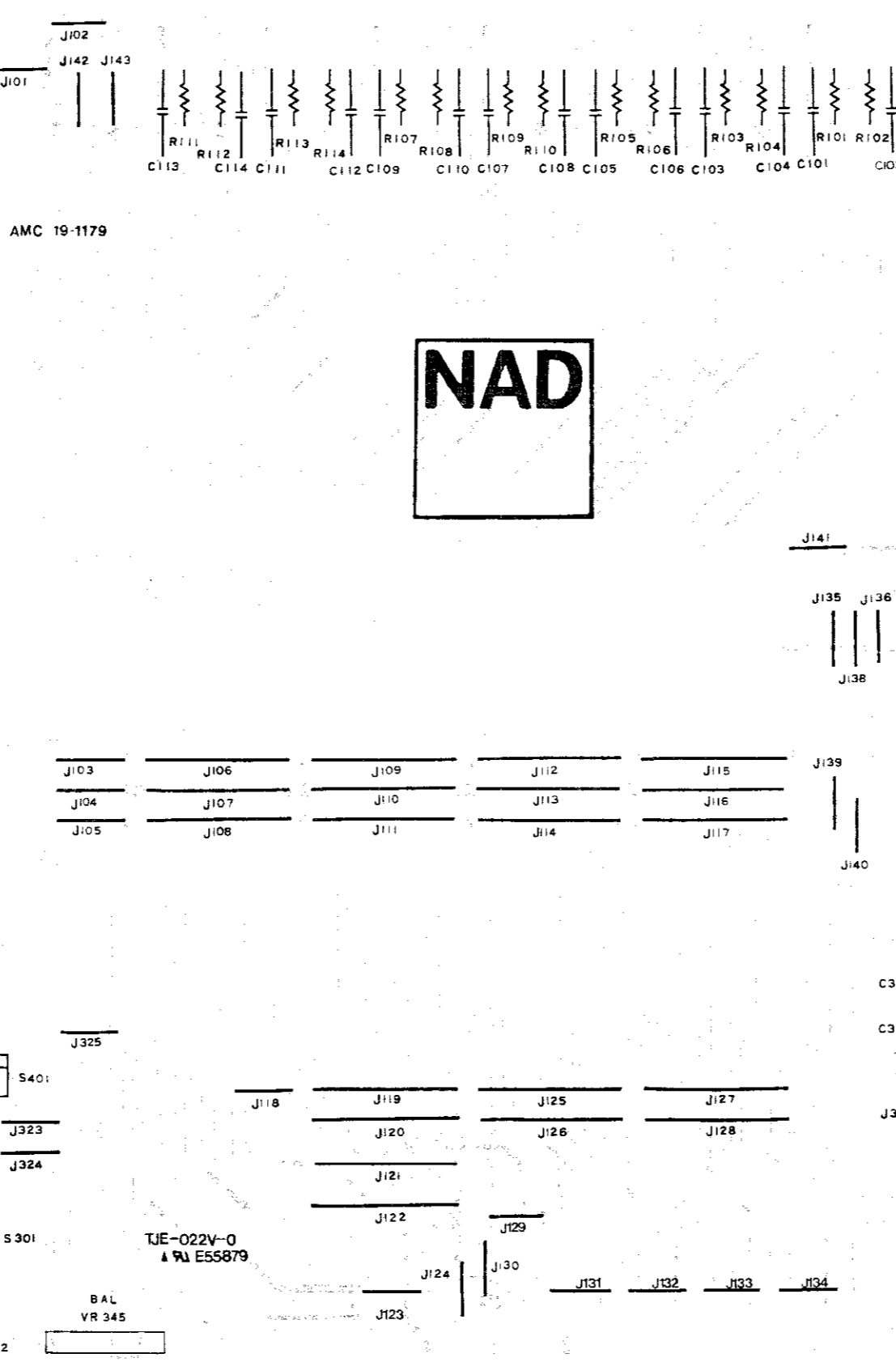
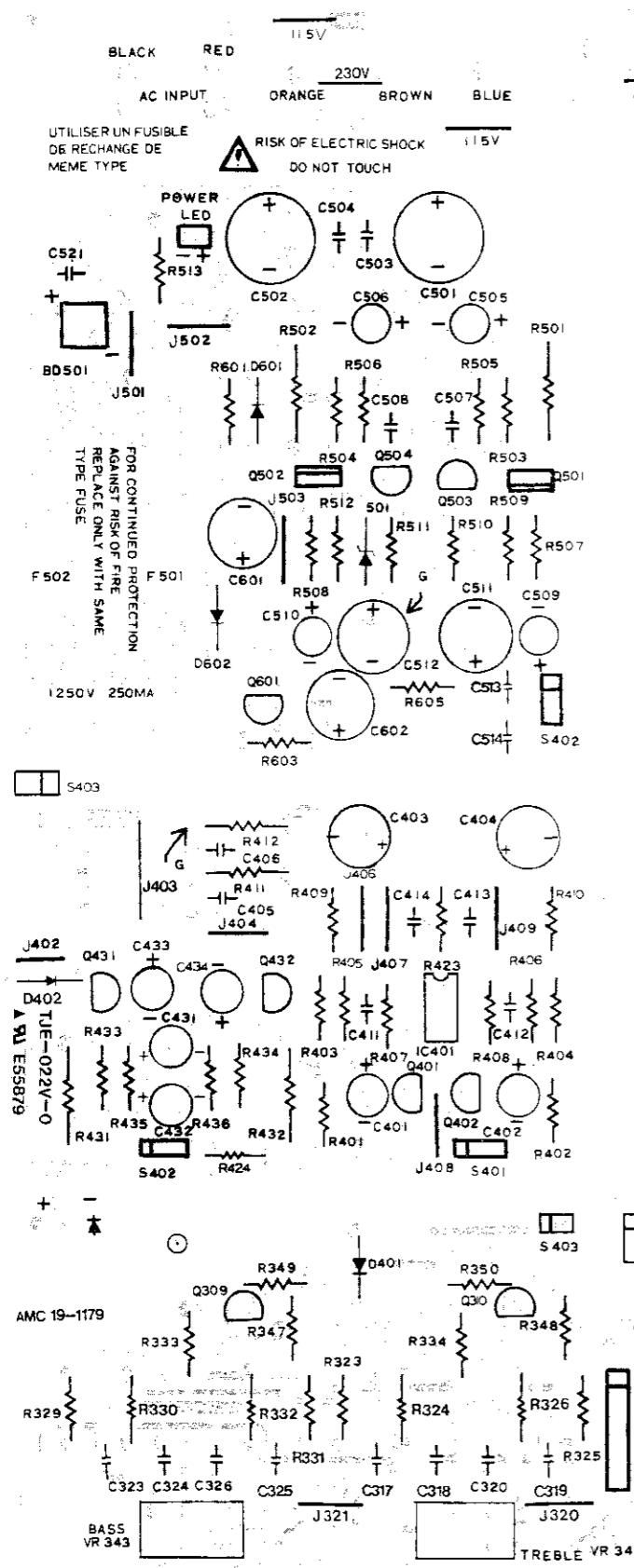


Table with columns: SYMBOL NO., Q'TY, I/D, PART NO., DESCRIPTION, SPECIFICATION, V/No. Contains parts list for NAD-1000 including monitor series, chassis, and power components.

Table with columns: SYMBOL NO., Q'TY, I/D, PART NO., DESCRIPTION, SPECIFICATION, V/No. Contains parts list for NAD-1000 including power supply, cables, and mechanical parts.

11

Table with columns: SYMBOL NO., Q'TY, I/D, PART NO., DESCRIPTION, SPECIFICATION, V/No. Contains parts list for NAD-1000 including covers, screws, and chassis components.

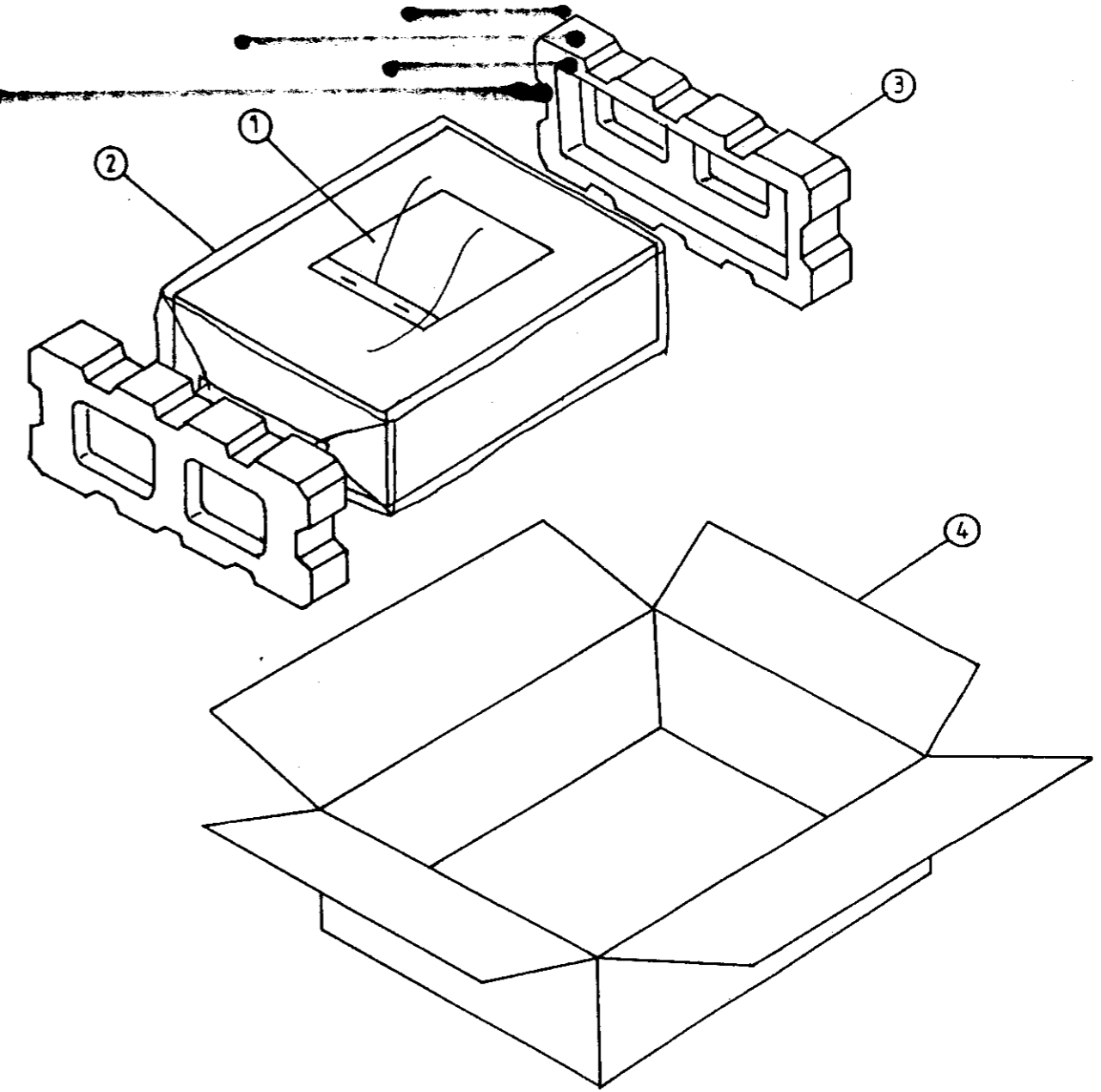
Table with columns: SYMBOL NO., Q'TY, I/D, PART NO., DESCRIPTION, SPECIFICATION, V/No. Contains parts list for NAD-1000 including resistors, capacitors, and diodes.

12

SYMBOL NO.	Q'TY	I/O	PART NO.	DESCRIPTION	SPECIFICATION	V/No.
R311, R312	2		16-1/4HA272G	RES. M. P.	247, 1/4W, ±2%	
R307, R308	2		16-1/4HA331G	RES. M. P.	390, 1/4W, ±2%	
R329, R330	2		16-1/4HA332G	RES. M. P.	343, 1/4W, ±2%	
R333, R334	2		16-1/4HA336G	RES. M. P.	319, 1/4W, ±2%	
R331, R332	2		16-1/4HA681G	RES. M. P.	680, 1/4W, ±2%	
R351, R352	2		16-1/4HA681G	RES. M. P.	680, 1/4W, ±2%	
C316, C318	2		17-2-5BR107MC	CAP. EL.	1000P/25V, ±20%, L.L.	
C313, C314	2		17-2-5BR116ML	CAP. EL.	470P/25V, ±20%, L.L.	
C321, C322	2		17-3-5BR176ML	CAP. EL.	470P/35V, ±20%, L.L.	
C395, C396	2		17-5BR150J	CAP.	MC.C., 150P/50V, ±5%	
C385, C326	2		17-5BR174J	CAP.	M. PE., 0.47uF/50V, ±5%	
C327, C328	2		17-5BR104J	CAP.	M. PE., 0.1uF/50V, ±5%	
C317, C318	2		17-5BR104J	CAP.	M. PE., 0.1uF/50V, ±5%	
C323, C324	2		17-5BR22J	CAP. SX	M. PE., 0.22uF/50V, ±5%	
C307, C308	2		17-5BR101J	CAP. SR	P. S., 100P/50V, ±5%	
C301, C304	4		17-5PR104J	CAP. SR	P. S., 220P/50V, ±5%	
C395, C396	2		17-5BR22J	CAP. SR	P. S., 100P/50V, ±5%	
C333	2		17-5BR20J	CAP. SR	P. S., 82P/50V, ±5%	

19-1179-5			PCB-SUB	POWER CNT		
AC INPUT	10		13-602T	SQUARE PIN	1.0x16mm	
B9501	1		30-RB153N	BRIDGE DIODE	RB153 UL	L260017801
Q501	1		30-2SD669AC	TR.	2SD669A(C), HITACHI	
Q502	1		30-2SR619AC	TR.	2SR619A(C), HITACHI	
Q503	1		30-2SC2240G	TR.	2SC2240G, TOSHIBA	
Q504	1		30-2SA1015G	TR.	2SA1015G, TOSHIBA	
Q505	1		30-2SC1815G	TR.	2SC1815G, TOSHIBA	
Q501	1		30-RZ22-2	ZENER DIODE	20-22V, 1/2W, ±5%	
B601, B602	2		30-1M1148	DIODE	1M1148	
F1, F2	4		32S2014	CLAMPON		
F1, F2	2	A	32-2019	SGAO-25	250mA/25V, 5x20mmT, SGA, UL	
F1, F2	2	B	32-2020	SGAO-25	250mA/25V, 5x20mmT, SGA, UL	
F1, F2	2	C	32-2020	SGAO-25	250mA/250V, 5x20mmT, S8MCO	
F1, F2	2	CI	32-2020	SGAO-25	250mA/250V, 5x20mmT, S8MCO	
R501, R502	2		16-1MR220J	RES. M. P.	22, 1W, ±5%, K1M	
R513	1		16-1/2CA132J	RES. C. P.	3K3, 1/2W, ±5%, TAPE	
R601	1		16-1/4CA103J	RES. C. P.	10K, 1/4W, ±5%	
R503, R508	7		16-1/4CA122J	RES. C. P.	1K2, 1/4W, ±5%	
R512	7		16-1/4CA122J	RES. C. P.	1K2, 1/4W, ±5%	
R509, R510	2		16-1/4CA153J	RES. C. P.	15K, 1/4W, ±5%	
R511	1		16-1/4CA331J	RES. C. P.	330, 1/4W, ±5%	
R603	1		16-1/4CA391J	RES. C. P.	390, 1/4W, ±5%	
R605	1		16-1/4CA822J	RES. C. P.	82K, 1/4W, ±5%	
C515	1		17-40CR47M	CAP.	4700P/400V, ±20%	
C509, C510	2		17-3-5BR106M	CAP.	100P/35V, ±20%	
C511, C512	2		17-3-5BR227M	CAP.	2200P/35V, ±20%	
C501, C502	2		17-5BR477M	CAP.	4700P/50V, ±20%	
C505, C506	2		17-3-5BR476M	CAP. EL.	470P/35V, ±20%	

PACKING DIAGRAM



PACKING LIST FOR NAD-1000

ITEM	PARTS NUMBER	NAME	QTY
1	21-4041	OWNER'S MANUAL	1
2	26-0716	PE-BAG	1
3	34-1059	POLYLON	2
4	CT-5193	GIFT-BOX	1

NAD Electronics Ltd.
Model: 1000
Service Information
Issue 1
Date: 1 November 1990

[REDACTED]
[REDACTED]
[REDACTED]
[REDACTED]
[REDACTED]

Notes:

Proprietary information for servicing purposes only. The information given herein may not be used commercially without the prior written agreement of NAD Electronics LTD, Adastra House, 401-405 Netherstreet, London, N2 1QG, England

SERVICE MANUAL

© 1990 BY NAD PRINTED IN TAIWAN R.O.C.

1000
STEREO PREAMPLIFIER

NAD ELECTRONICS
LONDON