



Service Manual

Nakamichi TD-700 TD-700E TD-700D

Mobile Tuner/Cassette Deck



CONTENTS

1.	General	2
2.	Removal Procedures	3
2. 1.	Top and Bottom Covers	3
2. 2.	Front Panel Ass'y	3
2. 3.	Control P.C.B. Ass'y and Front Chassis	3
2. 4.	Volume P.C.B. Ass'y	3
2. 5.	Tuner P.C.B. Ass'y	4
2. 6.	Motor P.C.B. Ass'y	4
2. 7.	Amp. P.C.B. Ass'y	4
2. 8.	Transport Mechanism Ass'y	4
3.	Test Tapes and Gauges	5
4.	Mechanical Adjustments	5
4. 1.	Tape Speed Adjustment	5
4. 2.	Tape Guide Height Adjustment	5
4. 3.	Playback Head Height Adjustment and Azimuth Alignment	6
4. 4.	Torque Adjustment	6
5.	Parts Location for Electrical Adjustment	7
6.	Electrical Adjustment	7
6. 1.	Cassette Deck Section	7
6. 2.	Tuner Section (FM Adjustment)	8
7.	Mechanism Ass'y and Parts List	9
7. 1.	Synthesis	9
7. 2.	Front Panel Ass'y (A01)	11
7. 3.	Transport Mechanism Ass'y (A02)	12
7. 4.	Azimuth Controller Ass'y (B01)	13
7. 5.	Side Chassis Ass'y (B02)	13
7. 6.	Cassette Holder Ass'y (B03)	14
7. 7.	Transport Mechanism Sub Ass'y (B04)	15
7. 8.	Loading Mechanism Ass'y (B05)	17
7. 9.	Head Slider Ass'y (C01)	18
7. 10.	Master Plate Ass'y (C02)	18
7. 11.	Reel Mechanism Ass'y (C03)	19
7. 12.	Solenoid Plate Ass'y (D01)	19
7. 13.	Loading Arm Ass'y (D02)	19
7. 14.	Head Base Arm Ass'y (D03)	19
7. 15.	FF Arm Ass'y (E01)	20
7. 16.	Rewind Arm Ass'y (E02)	20
8.	Mounting Diagrams and Parts List	21
8. 1.	Line Filter P.C.B. Ass'y	21
8. 2.	Transistor P.C.B. Ass'y	21
8. 3.	Shut-off P.C.B. Ass'y	21
8. 4.	Lamp P.C.B. Ass'y	21
8. 5.	Solenoid P.C.B. Ass'y	21
8. 6.	Buffer Amp. P.C.B. Ass'y	22
8. 7.	Control P.C.B. Ass'y	22
8. 8.	Volume P.C.B. Ass'y	22
8. 9.	Tone Volume P.C.B. Ass'y	23
8. 10.	Motor P.C.B. Ass'y	24
8. 11.	Tuner P.C.B. Ass'y	25
8. 12.	Amp. P.C.B. Ass'y	31
8. 13.	Logic P.C.B. Ass'y	33
9.	Schematic Diagrams	38
9. 1.	IC Block Diagrams	38
9. 2.	Schematic Diagrams	39
10.	Wiring Diagrams	42
11.	Timing Chart	44
12.	Block Diagrams	45
12. 1.	Tuner and Amplifier Section	45
12. 2.	Mechanism Control Section	45
13.	Specifications	46

1. GENERAL

1.1. Packing Materials, Owner's Manual and Auxiliary Parts

<u>Part No.</u>	<u>Description</u>	<u>Q'ty</u>
OF03845A	Outer Carton TD-700	1
OF03853A	Outer Carton TD-700E	1
OF03836A	Outer Carton TD-700D	1
OF03822A	Inner Carton TD-700 (U.S.A.)	1
OF03823A	Inner Carton TD-700 (Canada, Australia, Others & Japan)	1
OF03827A	Inner Carton TD-700E	1
OF03835A	Inner Carton TD-700D	1
OF03831A	Packings	2
OF03832A	Sleeve	1
OD04479A	Owner's Manual TD-700/TD-500 (Japanese)	1
OD04480A	Owner's Manual TD-700/TD-500 (English)	1
OD04482A	Owner's Manual TD-700/TD-500, TD-700E/TD-500E & TD-700D/TD-500D (English/German/French)	1
OD04481A	French Text TD-700/TD-500 (Canada)	1
OB90003A	Fuse 0.5A	1
OB90042A	Fuse 1.0A	1
OB81267E	4P Terminal TD-700 & TD-700E	1
OB81271E	4P Terminal TD-700D	1
OD04207A	Metal Stay (except Japan)	1
OB80067E	Ground Wire (except Japan)	1
OJ04872A	U-shaped Grip (except Japan)	2
OJ04459A	Trim Panel Rim (except Japan)	1
OJ04879A	Sleeve Spacer A (thin type) (except Japan)	1
OJ04880A	Sleeve Spacer B (thick type) (except Japan)	1
HA04665A	Mobile Traffic Information Processor TD-700	1

1.2. Note on Operation

If the Rewind button is pressed before the cassette tape loading process is completed, unexpected action may occur depending on the condition of the Mobile Tuner/Cassette Deck. The cassette tape may be ejected or played back unwillingly.

2. REMOVAL PROCEDURES

2.1. Top and Bottom Covers

Refer to Fig. 2.1.

- (1) Remove F01 (Mounting Sleeve).
- (2) Loosen screws F02 (1 pec.) and F03 (2 pcs.) and remove F04 (Top Cover).
- (3) Loosen screws F05 (1 pec.) and F06 (3 pcs.) and remove F07 (Bottom Cover).

2.2. Front Panel Ass'y

Refer to Fig. 2.2.

- (1) Remove the Top and Bottom Covers referring to item 2.1.
- (2) Loosen F01 and pull out knobs F02, F03 and F04.
- (3) Loosen F05 and remove F06 (Front Panel Ass'y including Cleaning Flap Ass'y).

2.3. Control P.C.B. Ass'y and Front Chassis

Refer to Fig. 2.2.

- (1) Remove the Front Panel Ass'y referring to item 2.2.
- (2) Loosen F07 and remove F08 (Control P.C.B. Ass'y).
- (3) Loosen F09 and F10 and remove F11, F12, F13 and F14.
- (4) Insert a small flat-blade screwdriver into the holes in the Main Chassis as shown in the figure and lift the upper part of the connector to unlock the flexible P.C.B. of the LCD Ass'y.
- (5) Disconnect connectors A and B and disassemble F15 (Front Chassis including LCD Ass'y, etc.).

2.4. Volume P.C.B. Ass'y

Refer to Fig. 2.2.

- (1) Remove the Front Chassis referring to item 2.3.
- (2) Loosen F16 and disassemble F17 and F18 (Volume P.C.B. Ass'y).

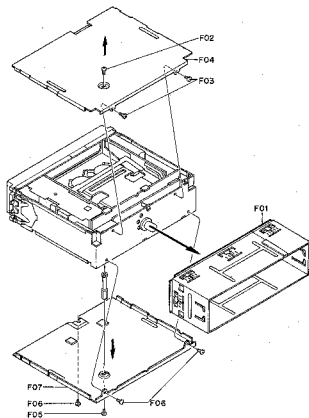


Fig. 2.1

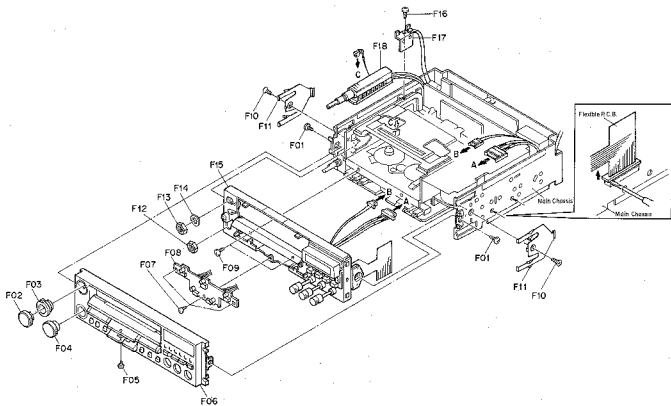


Fig. 2.2

2.5. Tuner P.C.B. Ass'y

Refer to Fig. 2.3.

- (1) Remove the Top and Bottom Covers referring to item 2.1.
- (2) Loosen F01, disconnect connectors A and B, and remove F02 (Tuner P.C.B. Ass'y) and F03.

2.6. Motor P.C.B. Ass'y

Refer to Fig. 2.3.

- (1) Remove the Top and Bottom Covers referring to item 2.1.
- (2) Loosen F04 and disconnect connectors C, D, E and F.
- (3) Remove F05 (Motor P.C.B. Insulator) and F06 (Motor P.C.B. Ass'y).

2.7. Amp. P.C.B. Ass'y

Refer to Fig. 2.3.

- (1) Remove the Top and Bottom Covers referring to item 2.1.
- (2) Remove the Tuner P.C.B. Ass'y and Motor P.C.B. Ass'y referring to items 2.5 and 2.6.
- (3) Loosen F07 and disconnect connector G.
- (4) Lift F08 (Amp. P.C.B. Ass'y), disconnect connectors H, I and J, and remove F08 (Amp. P.C.B. Ass'y).

2.8. Transport Mechanism Ass'y

Refer to Fig. 2.4.

- (1) Remove the Front Chassis and the Volume P.C.B. Ass'y referring to items 2.3 and 2.4.
- (2) Loosen F01, remove F02, and lift F03 (Motor P.C.B. Ass'y).
- (3) Disconnect connectors A, B, C and D.
- (4) Pull out F04 (Amp. P.C.B. Ass'y) and disconnect connector E.
- (5) Loosen F05, lift F06 (Transport Mechanism Ass'y) and Motor P.C.B. Ass'y, and disconnect connector F to separate F06.

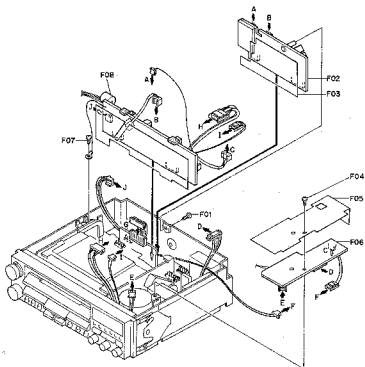


Fig. 2.3

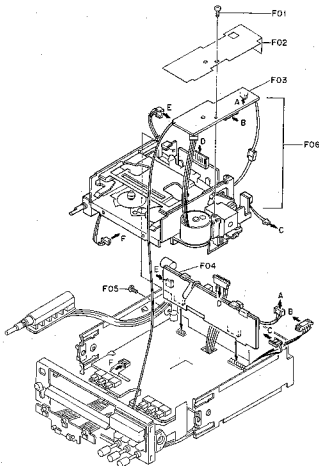


Fig. 2.4

3. TEST TAPES AND GAUGES

- (1) 1 kHz Track Alignment Tape (DA09007B)
- (2) 15 kHz Azimuth Tape (DA09004B)
- (3) 400 Hz Level Tape (DA09005B)
- (4) 3 kHz Speed & Wow/Flutter Tape (DA09006C)
- (5) Torque Gauge for Forward Playback (DA09082A)
- (6) Torque Gauge for F.F. & REW (DA09084A)
- (7) Head Alignment Gauge (DA09092A)

4. MECHANICAL ADJUSTMENTS

Note: Before adjustment, remove the Top and Bottom Covers referring to item 2.1.

4.1. Tape Speed Adjustment

Refer to Fig. 4.1.

- (1) Connect a frequency counter to Output Jack.
- (2) Load a 3 kHz Speed & Wow/Flutter Tape and play it back.
- (3) Adjust the potentiometer incorporated in the Main Motor Ass'y to obtain a 3 kHz reading on the frequency counter.

4.2. Tape Guide Height Adjustment

- (1) For Serial Nos.: C60502839 - (TD-700 & TD-700E) and C60701201 - (TD-700D)

Note: Remove the Cleaning Flap before loading the Head Alignment Gauge. When ejecting the Head Alignment Gauge pay attention so as not to strike against the Tape Slot Cover.

Refer to Fig. 4.2.

- (a) Turn the Azimuth Fine Tuning Control fully clockwise and then return it by 15 clicks to set it to the center position.
- (b) Load a base of the Head Alignment Gauge carefully and set the Mobile Tuner/Cassette Deck in Play mode.
- (c) Place a small block of the Head Alignment Gauge on the base.
- (d) Slide the small block against the Supply Tape Guide, and adjust the Tape Guide Height Adjustment Screw so that the small block is accepted by the Supply Tape Guide.

- (2) For Serial Nos.: C60501001 - 02838 (TD-700 & TD-700E) and C60701001 - 01200 (TD-700D)

Refer to Fig. 4.3.

- (a) Set the Azimuth Fine Tuning Control fully clockwise and then return it by 15 clicks to set it to the center position.
- (b) Connect a VTVM to the Output Jacks.
- (c) Load a 1 kHz Track Alignment Tape and play it back.
- (d) Turn the Tape Guide Height Adjustment Screw to obtain minimum readings on the VTVM for both channels.

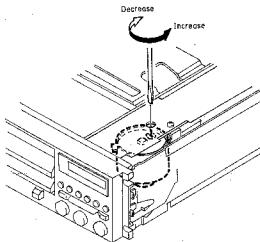


Fig. 4.1

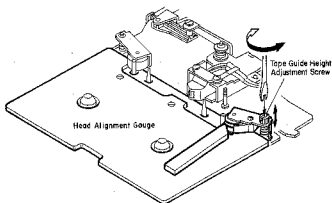


Fig. 4.2
Serial No.: C60502839 -
(TD-700 & TD-700E)
C60701201 - (TD-700D)

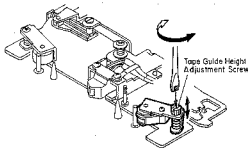


Fig. 4.3
Serial Nos.: C60501001 - 02838
(TD-700 & TD-700E)
C60701001 - 01200
(TD-700D)

4.3. Playback Head Height Adjustment and Azimuth Alignment

- (1) For Serial Nos.: C60502839 - (TD-700 & TD-700E) and C60701201 - (TD-700D)

Refer to Fig. 4.4.

- (a) Connect a VTVM to the Output Jacks.
- (b) Set the Azimuth Fine Tuning Control to the center position referring to 4.2-(1)-(e).
- (c) Load a 1 kHz Track Alignment Tape and play it back.
- (d) Turn the Playback Head Height Adjustment Screw to obtain minimum readings on the VTVM for both channels.
- (e) Load a 15 kHz Azimuth Alignment Tape and play it back.
- (f) Turn the Azimuth Alignment Screw to obtain maximum readings on the VTVM for both channels.
- (g) Repeat above steps (c) through (f) one or two times to obtain optimum performance.

- (2) For Serial Nos.: C60501001 - 02838 (TD-700 & TD-700E) and C60701001 - 01200 (TD-700D)

Refer to Fig. 4.5.

- (a) Connect a VTVM to the Output Jacks.
- (b) Load a 15 kHz Azimuth Alignment Tape and play it back.
- (c) Turn the Azimuth Alignment Screw to obtain maximum readings on the VTVM for both channels.

Note: Playback Head Height Adjustment Screw is not provided in these Models.

4.4. Torque Adjustment

Refer to Fig. 4.6.

- (1) Load a Torque Gauge for Forward Playback.
- (2) Set the Mobile Tuner/Cassette Deck in Play mode.
- (3) Check whether the playback torque and back tension torque on the Gauge are as follows:
Playback torque: 35 g-cm \pm 5 to \pm 10 g-cm
Back tension torque: 10 g-cm \pm 4 g-cm
- (4) If the playback torque is out of the above range, turn the Playback Torque Adjustment Screw with a small flat-blade screwdriver to obtain a satisfactory result.
- (5) Set the Mobile Tuner/Cassette Deck in Stop mode and then load a Torque Gauge for F.F. & REW.
- (6) Set the Mobile Tuner/Cassette Deck in F.F. or Rewind mode and check that the torque is in the range shown below:
F.F./Rewind torque: 60 g-cm \pm 10 to \pm 40 g-cm (50 to 100 g-cm)

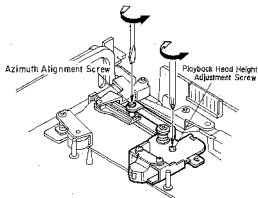


Fig. 4.4
Serial No.: C60502839 -
(TD-700 & TD-700E)
C60701201 - (TD-700D)

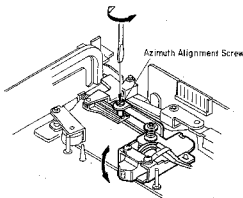
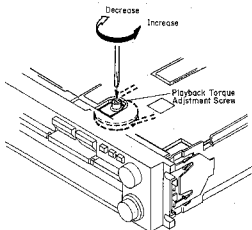


Fig. 4.5
Serial Nos.: C60501001 - 02838
(TD-700 & TD-700E)
C60701001 - 01200
(TD-700D)



(Bottom View)

Fig. 4.6

5. PARTS LOCATION FOR ELECTRICAL ADJUSTMENT

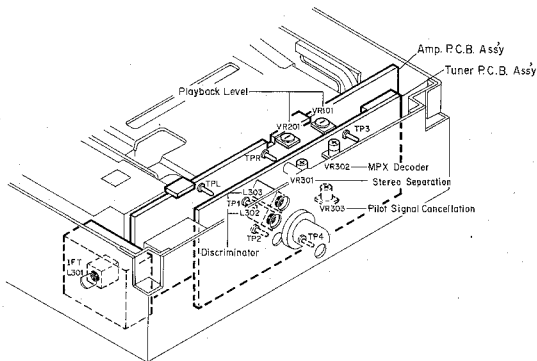


Fig. 5

6. ELECTRICAL ADJUSTMENTS

6.1. Cassette Deck Section

Note: Electrical adjustment should be performed after mechanical adjustment is completed.

STEP	ITEM	SIGNAL SOURCE	OUTPUT CONNECTION	MODE	ADJUSTMENT	REMARKS
1	Preliminary Step			Volume - Max. Fader, Balance - Center Bass, Mid, Treble - Center		Set the Mobile Tuner/Cassette Deck to the initial mode (see MODE).
2	Playback Level Adjustment	400 Hz Level Tape	VIVM to IPL, TPR on Amp. P.C.B.	Playback Eq. SW - 70 μ s	Amp. P.C.B. VR101 VR201	1. Load a 400 Hz level tape and play it back. 2. Adjust VR101 (VR201) to obtain 350 mV on the VIVM.

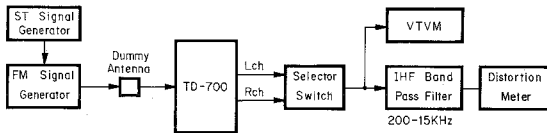


Fig. 6 Connection Diagram for FM Adjustment

6.2. Tuner Section (FM Adjustment)

Note: Adjustment should be made in a shielded room in principle.

STEP	ITEM	OUTPUT CONNECTION	MODE	ADJUSTMENT	REMARKS
1	Preliminary Step	See Fig. 6	Mobile Tuner/Cassette Deck Dolby NR - OFF Band Selector - FM Volume - Max. Fader, Balance - Center Bass, Mid, Treble - Center FM Generator Frequency - 98 MHz RF Level - 65 dbf Modulation - 1 kHz (Stereo/Mono) Modulation Ratio - (See REMARKS)		1. Connect necessary instruments to the Mobile Tuner/Cassette Deck referring to connection diagram (Fig. 6). 2. Set the Mobile Tuner/Cassette Deck to the initial mode (see MODE). Modulation Ratio: Stereo TD-700 (U.S.A. & Canada): Audio 1 kHz 90%, Pilot 19 kHz 10% TD-700 (Australia & Others), TD-700E & TD-700D: Audio 1 kHz 50%, Pilot 19 kHz 10% Mono TD-700 (U.S.A. & Canada): Audio 1 kHz 100% TD-700 (Australia & Others), TD-700E & TD-700D: Audio 1 kHz 60%
2	IFT Adjustment		Mobile Tuner/Cassette Deck Same as above FM Generator Frequency - 98 MHz RF Level - 65 dbf Modulation - Mono	Front-end IFT Coil L301	With decreasing the RF level gradually from 65 dbf to 30 dbf, adjust IFT coil L301 to obtain minimum distortion. (Do not turn other components on the Front-end.)
3	MPX Decoder Adjustment	Frequency Counter to TP3 on Tuner P.C.B.	Mobile Tuner/Cassette Deck Same as above FM Generator Frequency - 98 MHz RF Level - 0 dbf Modulation - Mono	Tuner P.C.B. VR302	1. Cut the RF signal applied to the Mobile Tuner/Cassette Deck. 2. Adjust VR302 to obtain 76 kHz \pm 1 kHz on the frequency counter.
4	Discriminator Adjustment	DC Millivoltmeter between TP1 and TP2 on Tuner P.C.B.	Mobile Tuner/Cassette Deck Same as above FM Generator Frequency - 98 MHz RF Level - 65 dbf Modulation - Mono	Tuner P.C.B. L302, L303	1. Turn L302 (black core) to obtain \pm 50 mV on the DC millivoltmeter. 2. Turn L303 (white core) to obtain minimum distortion on the distortion meter. 3. Repeat above 2 and 3 two or three times.

STEP	ITEM	OUTPUT CONNECTION	MODE	ADJUSTMENT	REMARKS
5	Pilot Signal Cancellation Adjustment		Mobile Tuner/Cassette Deck Same as above FM Generator Frequency - 98 MHz RF Level - 65 dbf Modulation - Stereo	Tuner P.C.B. VR303	1. Set the modulation of the FM Generator as follows: o Cut audio signal 1 kHz o Apply only pilot 19 kHz 10% 2. Adjust VR303 to obtain minimum readings on the VTVM for both channels. The minimum reading should be less than -40 dB.
6	Stereo Separation		Mobile Tuner/Cassette Deck Same as above FM Generator Frequency - 98 MHz RF Level - 65 dbf Modulation - Stereo	Tuner P.C.B. VR301	1. Cut the 1 kHz modulation of R channel of the stereo modulator. Namely, apply 1 kHz signal only to L channel. 2. Adjust VR301 to obtain minimum reading for R channel on the VTVM. 3. Apply 1 kHz signal only to R channel. 4. Adjust VR301 to obtain minimum reading for L channel on the VTVM. 5. Check whether the readings in 2 and 4 are less than -30 dB. If not, repeat 1 through 4 till satisfactory results are obtained.
7	Offset Voltage Check on IC301	DC Millivoltmeter across IC301-14 and GND on Tuner P.C.B.	Mobile Tuner/Cassette Deck Same as above FM Generator Frequency - 98 MHz RF Level - 65 dbf Modulation - Mono		Note: This check will be required only if IF Amp. IC301 (LA1140) on the Tuner P.C.B. Ass'y is replaced with new one. At that time, conduct Step 3 (adjustment of L302 and L303 on Tuner P.C.B.) and then check the following: 1. Set the modulation signal of FM generator to 1 kHz (Mono). 2. Check whether the reading on the DC millivoltmeter is less than 5 mV. 3. If not, replace with another LA1140 and repeat above 1 and 2 after re-adjustment of Step 3.

7. MECHANISM ASS'Y AND PARTS LIST

7.1. Synthesis

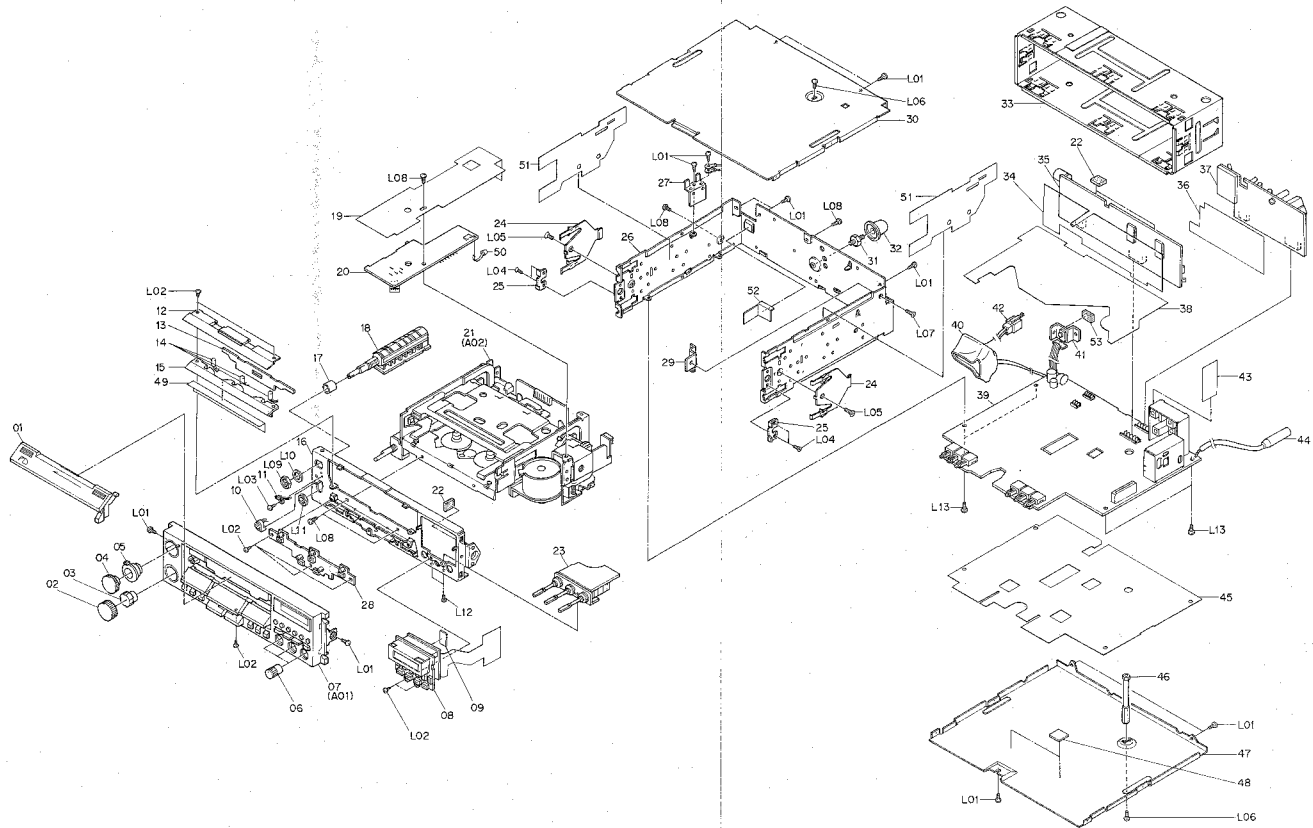


Fig. 7.1

7.2. Front Panel Assy (A01)

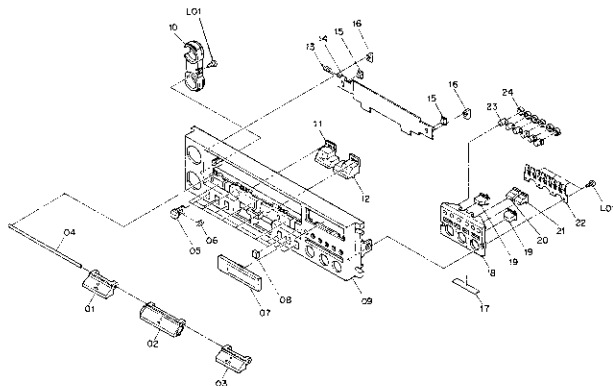


Fig. 7.2

Schematic Ref. No.	Part No.	Description	Qty	Schematic Ref. No.	Part No.	Description	Qty
A01	HA04775A	Front Panel Assy TD-700	1	A01	HA04677C	Front Panel Assy TD-700	1
	HA04775A	Front Panel Assy TD-700E	1		HA04679C	Front Panel Assy TD-700E	1
	HA04778A	Front Panel Assy TD-700D Serial No.: C60502501 - C60701201 -	1		HA04681C	Front Panel Assy TD-700D Serial No.: C60501001 - 02500 C60701001 - 02500	1
01	HA04709A	Eject Button Assy	1	01	HA04709A	Eject Button Assy	1
02	HA04708A	Play Button Assy	1	02	HA04708A	Play Button Assy	1
03	HA04710A	Pause Button Assy	1	03	HA04710A	Pause Button Assy	1
04	GJ04868A	Shaft	1	04	GJ04868A	Shaft	1
05	HA04786A	Push Button Assy	6	05	HA04786A	Push Button Assy	6
06	WJ04849A	Push Button Spring	6	06	GJ04849A	Push Button Spring	6
07	OH04460B	LCD Lens	1	07	OH04460A	LCD Lens	1
08	GJ04878A	Cushion	6	08	GJ04878A	Cushion	6
09	OH04472C	Front Panel	1	09	OH04472C	Front Panel	1
10	OH04462B	Illuminator C	1	10	OH04462B	Illuminator C	1
11	HA04713A	FF Button Assy	1	11	HA04713A	FF Button Assy	1
12	HA04714A	Rewind Button Assy	1	12	HA04714A	Rewind Button Assy	1
13	GJ04850B	Spring	1	13	GJ04850B	Spring	1
14	OH04491C	Tape Slot Cover TD-700	1	14	OH04491C	Tape Slot Cover TD-700	1
	OH04503C	Tape Slot Cover TD-700E	1		OH04503C	Tape Slot Cover TD-700E	1
	OH04508C	Tape Slot Cover TD-700D	1		OH04508C	Tape Slot Cover TD-700D	1
15	OH04463C	Tape Slot Cover Protector	2	15	OH04463C	Tape Slot Cover Protector	2
16	GJ04902A	Guide	2	16	GJ04902A	Guide	2
17	GJ04891A	Sheet	1	17	GJ04891A	Sheet	1
18	OH04469B	Illuminator D	1	18	OH04469A	Illuminator D	1
19	OH04482A	Up/Down Button	2	19	OH04482A	Up/Down Button	2
20	OH04482A	Scan Button	1	20	OH04482A	Scan Button	1
21	OH04480A	Memory Button	1	21	OH04480A	Memory Button	1
22	WJ04849A	Button Spring	1	22	GJ04848A	Button Spring	1
23	OH04473A	Station Button	6	23	OH04473A	Station Button	6
24	GJ04848B	Reflector	6	24	GJ04848B	Reflector	6
L01	OE00961A	RT2x5 @ Binding	5	L01	OE00961A	RT2x5 @ Binding	5

7.3. Transport Mechanism Assy (A02)

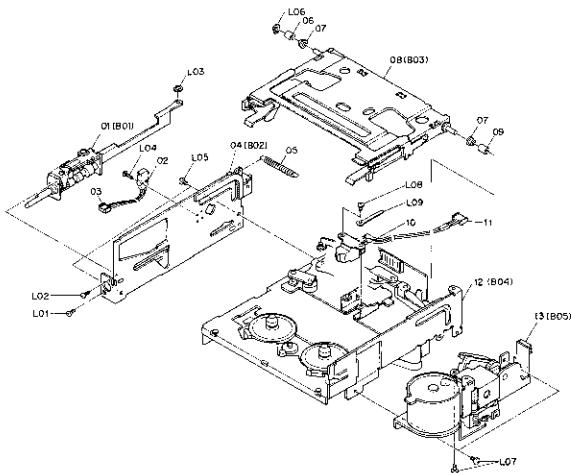


Fig. 7.3

Schematic Ref. No.	Part No.	Description	Q'ty	Schematic Ref. No.	Part No.	Description	Q'ty
A02	CA08716A	Transport Mechanism Assy Serial No.: C60503299 - C60701251 -	1	A02	CA08661B	Transport Mechanism Assy Serial Nos.: C60501001 - 03398 C60701001 - 01200	1
01	CA08687A	Azimuth Controller Assy	1	01	CA08687A	Azimuth Controller Assy	1
02	0B70028A	Eject Switch	1	02	0B70028A	Eject Switch	1
03	0B82299B	2P Coupler	1	03	0B82299B	2P Coupler	1
04	CA08685A	Side Chassis Assy	1	04	CA08685A	Side Chassis Assy	1
05	OC08868A	Spring A	1	05	OC08868A	Spring A	1
06	OC08799A	Guide Collar B	1	06	OC08799A	Guide Collar B	1
07	OC08797A	Guide Roller A	2	07	OC08797A	Guide Roller A	2
08	CA08665A	Cassette Holder Assy	1	08	CA08665A	Cassette Holder Assy	1
09	OC08798A	Guide Collar C	1	09	OC08798A	Guide Collar C	1
10	GA02203B	P2C-3L Playback Head	1	10	GA02203B	P2C-3L Playback Head	1
11	0B82302A	4P-H Connector	1	11	0B82302A	4P-H Connector	1
12	CA08717A	Transport Mechanism Sub Assy	1	12	CA08668A	Transport Mechanism Sub Assy	1
13	CA08667A	Loading Mechanism Assy	1	13	CA08667A	Loading Mechanism Assy	1
L01	0E03189A	M2x3 @ Countersink (Black Chromate)	1	L01	0E03189A	M2x3 @ Countersink (Black Chromate)	1
L02	0E03216A	M1.4x2.5 @ Pan (Black Chromate)	1	L02	0E03216A	M1.4x2.5 @ Pan (Black Chromate)	1
L03	0E00222A	E-Ring 2mm	1	L03	0E00222A	E-Ring 2mm	1
L04	0E03185A	M1.7x6 @ Pan	1	L04	0E03185A	M1.7x6 @ Pan	1
L05	0F03186A	M2.6x2.8 @ Pan (Black Chromate)	2	L05	0E03186A	M2.6x2.8 @ Pan (Black Chromate)	2
L06	0E00839A	Grp 2.5mm	1	L06	0E00839A	Grp 2.5mm	1
L07	0E00120A	M2.6x3 @ Pan (Black Chromate)	3	L07	0E00120A	M2.6x3 @ Pan (Black Chromate)	3
L08	0E00783A	M2x3 @ Pan (Black Chromate)	2	L08	0E00783A	M2x3 @ Pan (Black Chromate)	2
L09	OC08858A	Wire Clamp	1	L09	OC08858A	Wire Clamp	1

7.4. Azimuth Controller Ass'y (B01)

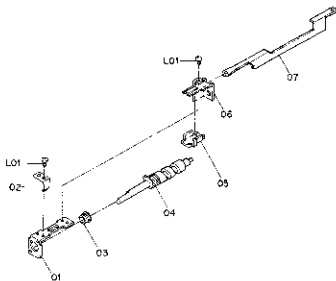


Fig. 7.4

7.5. Side Chassis Ass'y (B02)

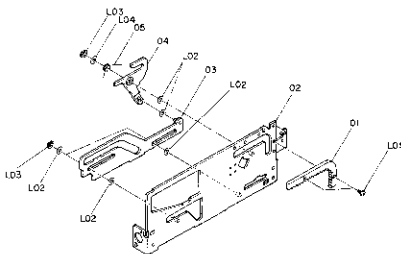


Fig. 7.5

Schematic Ref. No.	Part No.	Description	Q'ty	Schematic Ref. No.	Part No.	Description	Q'ty
B01	CA08687A	Azimuth Controller Ass'y Serial No.: C60501001 - C60701001.	1	B02	CA08686A	Side Chassis Ass'y Serial No.: C60501001 - C60701001.	1
01	OC08850B	Azimuth Cam Holder A	1	01	OC08828B	Rack Rail L	1
02	OC08856A	Plate Spring	1	02	CA08685A	Side Chassis L Ass'y	1
03	OC08856A	Cam Holder	1	03	CA08643B	G-Shaped Plate Ass'y	1
04	OC08777B	Azimuth Cam B	1	04	CA08644A	Slide Arm Ass'y	1
05	OC08864A	Joint Pin	1	05	OC08876A	Slide Arm Spring	1
06	OC08851B	Azimuth Cam Holder B	1	L01	0E03183A	M1.7x2.2 S Pan (Black Chromate)	2
07	OC08862A	Joint Bar	1	L02	0F03062A	Mylar Washer 2.6mm 2.6x5x0.25	6
L01	0E00922A	M2x3 S Pan (Black Chromate)	2	L03	0E00222A	R-Ring 2mm	3
				L04	0E03180A	Mylar Washer 2.6mm 2.6x6x0.25	1

7.6. Cassette Holder Ass'y (B03)

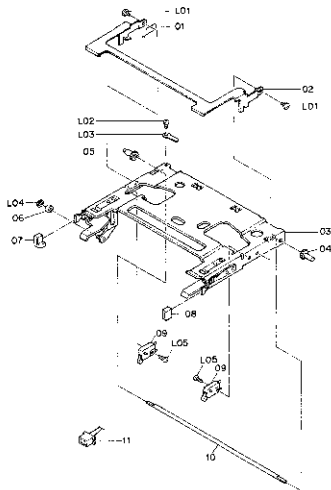


FIG. 7.6

Schematic Ref. No.	Part No.	Description	Qty
B03	CA0865A	Cassette Holder Ass'y Serial No.: C60601001 - C60701001 -	1
01	0C08890C	Plate Spring	1
02	0C08860P	Plate	1
03	CA08674D	Cassette Holder Sub Ass'y	1
04	0C08847A	Pinion Gear K	1
05	0C08846A	Pinion Gear L	1
06	0C08786A	Roller 1.5x4x2.5	1
07	0C08888B	Cassette Guide L	1
08	0C08887B	Cassette Guide R	1
09	0B70001A	Leaf Switch	2
10	0C08860B	Pinion Shaft	1
11	0B82301A	2P Coupler	2
L01	0E03208A	M1.4x2.5S ⌀	2
L02	0E03190A	S1.7x3 ⌀ Pan (Black Chromate)	1
L03	0E00005A	Earth Lug 2mm	1
L04	0E00165A	E-Ring 1.2mm	1
L05	0F03184A	S1.7x5.5 ⌀ Pan (Black Chromate)	2

7.7. Transport Mechanism Sub Ass'y (B04)

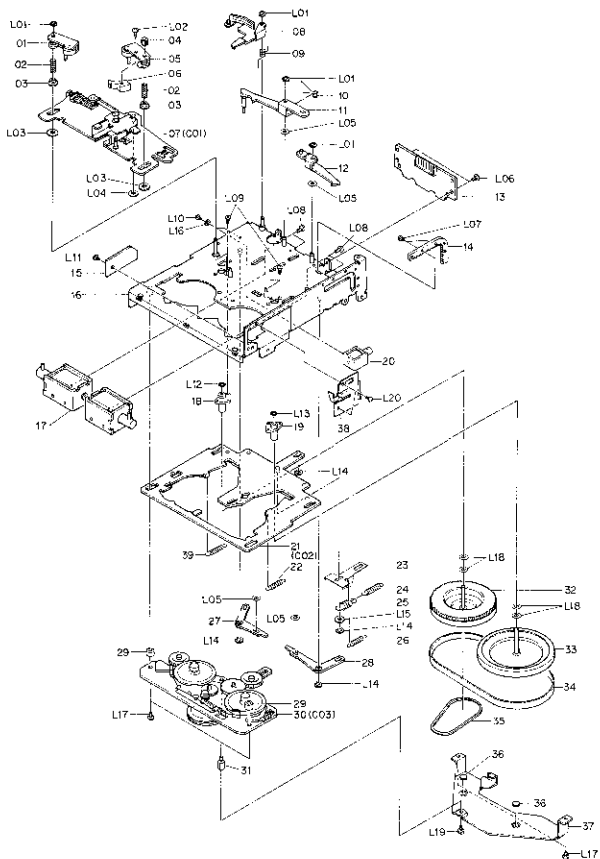


Fig. 7.7

Schematic Ref. No.	Part No.	Description	Qty	Schematic Ref. No.	Part No.	Description	Qty
B04	CA08177A	Transport Mechanism Sub Assy Serial No.: C80503299 - C80701251 -	1	B04	CA08663A	Transport Mechanism Sub Assy Serial No.: C80501001 - 02308 C80701001 - 01250	1
01	CA08617B	Take-up Pressure Roller Arm Sub Assy	1	01	CA08617B	Take-up Pressure Roller Arm Sub Assy	1
02	OC08878A	Pressure Roller Adjust Spring	2	02	OC08878A	Pressure Roller Adjust Spring	2
03	OC08689A	Roller Arm Sleeve	2	03	OC08689A	Roller Arm Sleeve	2
04	OC08694A	Pressure Roller Height Adjust Nut	1	04	OC08694A	Pressure Roller Height Adjust Nut	1
05	CA08618A	Supply Pressure Roller Arm Sub Assy	1	05	CA08618A	Supply Pressure Roller Arm Sub Assy	1
06	OC08756A	Tape Guide	1	06	OC08756A	Tape Guide	1
07	CA08679A	Head Slider Assy	1	07	CA08679A	Head Slider Assy	1
08	CA08656A	Azimuth Arm Assy	1	08	CA08656A	Azimuth Arm Assy	1
09	OC08801A	Azimuth Arm Spring	1	09	OC08801A	Azimuth Arm Spring	1
10	OC08667A	Lock Plate Spring	1	10	OC08667A	Lock Plate Spring	1
11	CA08622D	Play Lock Plate Assy	1	11	CA08622D	Play Lock Plate Assy	1
12	CA08623C	Rew Lock Plate Assy	1	12	CA08623C	Rew Lock Plate Assy	1
13	BA05450A	Solenoid P.C.B. Assy	1	13	BA05450A	Solenoid P.C.B. Assy	1
14	OC08825A	Rack Gear R	1	14	OC08825A	Rack Gear R	1
15	OC08817B	Guide Plate	1	15	OC08817B	Guide Plate	1
16	CA08657F	Mechanism Chassis Assy	1	16	CA08657F	Mechanism Chassis Assy	1
17	OB90027B	Main Solenoid G-825	2	17	OB90027B	Main Solenoid G-825	2
18	CA08629A	Take-up Flange Metal Assy	1	18	CA08629A	Take-up Flange Metal Assy	1
19	CA08630A	Supply Flange Metal Assy	1	19	CA08630A	Supply Flange Metal Assy	1
20	OB90028B	Lock Solenoid G-413	1	20	OB90028B	Lock Solenoid G-413	1
21	CA08678A	Master Plate Assy	1	21	CA08678A	Master Plate Assy	1
22	OC08884A	Pressure Roller Spring	1	22	OC08884A	Pressure Roller Spring	1
23	OC08679D	Centering Plate	1	23	OC08679D	Centering Plate	1
24	OC08881A	Control Plate Spring	1	24	OC08881A	Control Plate Spring	1
25	OC08880B	Head Base Spring	1	25	OC08880B	Head Base Spring	1
26	OC08877A	Centering Spring	1	26	OC08877A	Centering Spring	1
27	CA08612B	Solenoid Arm L Assy	1	27	CA08612B	Solenoid Arm L Assy	1
28	CA08613B	Solenoid Arm R Assy	1	28	CA08613B	Solenoid Arm R Assy	1
29	OC08703A	Slide Base Collar	2	29	OC08703A	Slide Base Collar	2
30	CA08718A	Reel Mechanism Assy	1	30	CA08718A	Reel Mechanism Assy	1
31	OC08807A	Thrust Stud	1	31	OC08807A	Thrust Stud	1
32	CA08609C	Take-up Flywheel Assy	1	32	CA08609C	Take-up Flywheel Assy	1
33	CA08610D	Supply Flywheel Assy	1	33	CA08609C	Take-up Flywheel Assy	1
34	OC08781A	Capsion Belt	1	34	OC08781A	Capsion Belt	1
35	OC08783A	V. Pulley Belt	1	35	OC08783A	V. Pulley Belt	1
36	OC08692A	Thrust Plate	2	36	OC08692A	Thrust Plate	2
37	OC08752B	Flywheel Plate B	1	37	OC08752B	Flywheel Plate B	1
38	OC04901B	Cover Plate	1	38	OC04901B	Cover Plate	1
39	OC08988A	Take-up Pressure Roller Spring	1	39	OC08988A	Take-up Pressure Roller Spring	1
L01	OE00042A	E-Ring 1.5mm	4	L01	OE00042A	E-Ring 1.5mm	4
L02	OE00841A	BT2x4 #Pan	1	L02	OE00841A	BT2x4 #Pan	1
L03	OC08828C	Slide Washer A	2	L03	OC08828C	Slide Washer A	2
L04	OC08827B	Slide Washer B	1	L04	OC08827B	Slide Washer B	1
L06	OE03196A	Mylar Washer 2.6mm 2.6x5x0.125	4	L06	OE03196A	Mylar Washer 2.6mm 2.6x5x0.125	4
L07	OE03197A	M2.6x4 #Pan (Black Chromate)	2	L07	OE03197A	M2.6x4 #Pan (Black Chromate)	2
L06	OE03183A	M1.7x2.2 #Pan (Black Chromate)	2	L06	OE03183A	M1.7x2.2 #Pan (Black Chromate)	2
L08	OE03241A	M2x3 #Bracket	4	L08	OE03241A	M2x3 #Bracket	4
L09	OE03189A	M2x3 #Countersunk (Black Chromate)	6	L09	OE03189A	M2x3 #Countersunk (Black Chromate)	6
L10	OE03246A	M1.6x3 #Pan (Black Chromate)	2	L10	OE03246A	M1.6x3 #Pan (Black Chromate)	2
L11	OE03186A	M2.6x4 #Pan (Black Chromate)	1	L11	OE03186A	M2.6x4 #Pan (Black Chromate)	1
L12	OE02200A	Nylon Washer 2mm 2.6x3.5x0.13	1	L12	OE02200A	Nylon Washer 2mm 2.6x3.5x0.13	1
L13	OE03179A	Nylon Washer 2.3mm 2.3x3.5x0.13	1	L13	OE03179A	Nylon Washer 2.3mm 2.3x3.5x0.13	1
L14	OE00222A	E-Ring 3mm	4	L14	OE00222A	E-Ring 3mm	4
L15	OE03206A	Nylon Washer 3.1x6x0.5	1	L15	OE03206A	Nylon Washer 3.1x6x0.5	1
L16	OE03199A	Washer 1.6x3.8x0.3 (Nickel)	2	L16	OE03199A	Washer 1.6x3.8x0.3 (Nickel)	2
L17	OE00120A	M2.6x3 #Pan	4	L17	OE00120A	M2.6x3 #Pan	4
L18	OE03062A	Mylar Washer 2.6mm 2.6x5x0.25	4	L18	OE03062A	Mylar Washer 2.6mm 2.6x5x0.25	4
L19	OE03243A	M2.6x3 Hex. Socket Head	1	L19	OE03243A	M2.6x3 Hex. Socket Head	1
L20	OE03245A	M2x2.5 #Pan	2	L20	OE03243A	M2x2.5 #Pan	2

7.8. Loading Mechanism Assy (B05)

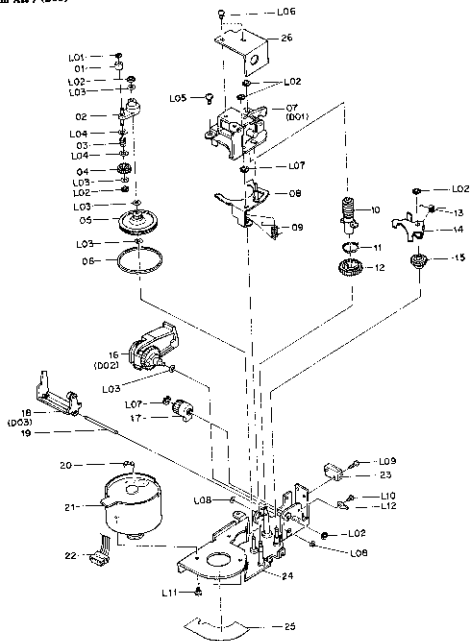


FIG. 7.8

Schematic Ref. No.	Part No.	Description	Qty
B05	CA0867A	Loading Mechanism Assy Serial No.: C60501001 - C60701001 -	1
01	OC08812A	Idle Roller L	1
02	CA08655B	F Arm L Assy	1
03	OC08872A	Function Spring	1
04	OC08840D	Idle Gear L	1
05	OC08842B	Loading Pulley	1
06	OC08784B	Loading Belt	1
07	CA08677A	Solenoid Plate Assy	1
08	CA08654B	Eject Arm Assy	1
09	OC08874A	Eject Arm Spring	1
10	OC08844C	Worm Gear	1
11	OC08673B	Flexible Spring	1
12	OC08829B	Loading Gear A	1
13	OC08871A	Loading Arm Spring C	1
14	OC08831B	Loading Arm C	1
15	OC08841B	Eject Gear	1
16	CA08675A	Loading Arm Assy	1
17	OC08789B	Head Base Cam Gear	1
18	CA08676A	Head Base Arm Assy	1
19	DC08793A	Head Base Arm Shaft	1
20	0B09629A	Carbon Resistor 10K 1/6W J	1
21	CA08652B	Main Motor Assy	1
22	0E08230A	4P-E Connector	1
23	0B70001A	Loading Switch	1
24	CA08643C	Motor Chassis Assy	1
25	0C04693A	Tone Volume Indicator	1
26	OC08892B	Solenoid Protector	1
L01	0E03182A	E-Ring 0.8mm	1
L02	0E00042A	E-Ring 1.5mm	6
L03	0E03061A	Mylar Washer 2.1mm 2.1x4x0.35	5
L04	0E03206A	Mylar Washer 3.1mm 3.1x4.9x0.125	2
L05	0E00226A	M2.6x4 @ Pan	1
L06	0E00922A	M2x3 @ Pan	2
L07	0E00222A	E-Ring 2mm	2
L08	0E03181A	Mylar Washer 1.6mm 1.6x3.5x0.25	2
L09	0E03185A	M1.7x6 @ Pan (Black Chromate)	1
L10	0E03183A	M1.7x2.2 @ Pan (Black Chromate)	1
L11	0E03186A	M2.6x2.8 @ Pan (Black Chromate)	2
L12	0E00905A	Earth Lug B	1
C01	CA08679A	Head Slider Assy Serial No.: C60601001 - C60701001 -	1
01	OC08879A	Head Hold Spring	1
02	OC08683B	Azimuth Screw	1
03	OC08749B	Head Mount Plate	1
04	DC08466A	SHe Cam Spring	1
05	OC08708A	Azimuth Adjust Plate	1
06	CA08645D	Head Base Assy	1
L01	0E00042A	E-Ring 1.5mm	1
L02	0E03191A	Washer 2.5mm 2.5x6.5x0.5	2
L03	0E03272A	M1.7x3.5 @ Pan	1
C02	CA08678A	Master Plate Assy Serial No.: C60601001 - C60701001 -	1
01	CA08652E	Control Plate Assy	1
02	CA08615A	R/F Selector Arm E Assy	1
03	CA08614A	R/F Selector Arm L Assy	1
04	DC08706A	Drive Pin	1
05	OC08676A	R/F Selector Plate	1
06	OC08852A	FF Limiter Spring	1
L01	0E00222A	E-Ring 2mm	2
L02	0E03196A	Mylar Washer 2.6mm 2.6x5x0.125	2
L03	0E00042A	E-Ring 1.5mm	1

7.9. Head Slider Assy (C01)

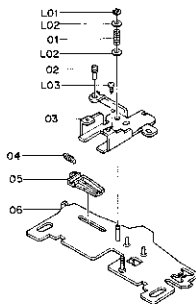


Fig. 7.9

7.10. Master Plate Assy (C02)

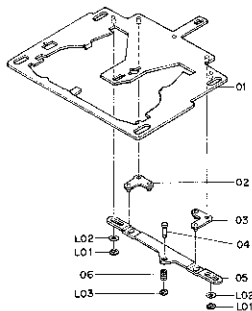


Fig. 7.10

7.11. Reel Mechanism Ass'y (D03)

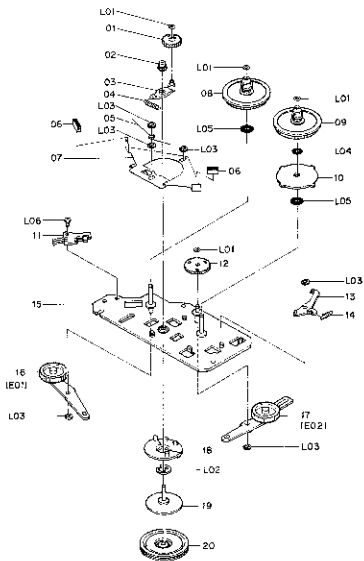


Fig. 7.11

7.12. Solenoid Plate Ass'y (D01)

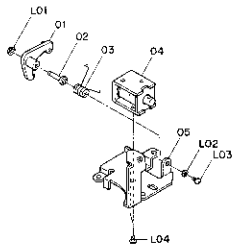


Fig. 7.12

7.13. Loading Arm Ass'y (D02)

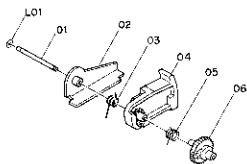


Fig. 7.13

7.14. Head Base Arm Ass'y (D03)

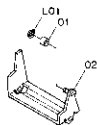


Fig. 7.14

7.15. FF Arm Ass'y (E01)

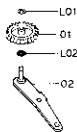


Fig. 7.15

7.16. Rewind Arm Ass'y (E02)

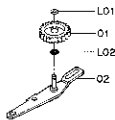


Fig. 7.16

Schematic Ref. No.	Part No.	Description	Qty	Schematic Ref. No.	Part No.	Description	Qty
C03	CA08718A	Reel Mechanism Ass'y Serial No.: C60503899 - C60701251.	1	D01	CA08677A	Solenoid Plate Ass'y Serial No.: C60501001 - C60701001.	1
01	0C08727A	Idler Gear	1	01	0C08834E	Stop Arm L	1
02	0C08678B	Pinion Gear	1	02	0C08838A	Stop Arm Shaft	1
03	CA08627B	Pivot Suspension Arm Ass'y	1	03	0C08875A	Stop Arm Spring	1
04	0C08866A	Pivot Suspension Arm Spring	1	04	0B990029A	Eject Solenoid	1
05	0C08864B	Brake Spring	1	05	0C08833A	Solenoid Plate	1
06	0C08690A	Brake Shoe	2	L01	0E00222A	E-Ring 2mm	1
07	0C08729B	RB Plate	1	L02	0F03199A	Washer 1.8mm	1
08	CA08635F	Take-up Reel Hub Ass'y	1	L03	0E03183A	M3.7x2.2 S Pan (Black Chromate)	1
09	CA08641F	Supply Reel Hub Ass'y	1	L04	0E00922A	M2x3 S Pan (Black Chromate)	2
10	0C08742A	Back Tension Disc	1				
11	BA05814B	Shut-off P.C.B. Ass'y	1	D02	CA08675A	Loading Arm Ass'y Serial No.: C60601001 - C60701001.	1
12	0C08729B	Idler Gear	1				
13	0C08709A	Back Tension Arm	1				
14	0C08865A	Back Tension Arm Spring	1				
15	CA08634D	Reel Chassis Ass'y	1	01	0C08796B	Main Shaft L	1
16	CA08672A	FF Arm Ass'y	1	02	CA08645A	Loading Arm B Ass'y	1
17	CA08671A	Rewind Arm Ass'y	1	03	0C08870A	Loading Arm Spring B	1
18	0C08778A	FR Drum	1	04	0C08601E	Loading Arm A	1
19	CA08631A	Clutch Disc Ass'y	1	05	0C08669C	Loading Arm Spring A	1
20	CA08673A	Magnet Clutch Pulley Ass'y	1	06	0C08791B	Loading Gear B	1
L01	0E03181A	Mylar Washer 1.6mm 1.6x3.5x0.25	4	L01	0E03181A	Mylar Washer 1.6mm 1.6x3.5x0.25	1
L02	0F00104A	E-Ring 5mm	1				
L03	0E00442A	E-Ring 1.5mm	6	D03	CA08676A	Head Base Arm Ass'y Serial No.: C60601001 - C60701001.	1
L04	0E03195A	Nylon Washer 3.6mm 3.6x6x0.25	1	01	0C08786A	Roller 1.5x4x2.5	1
L05	0E03193A	Nylon Washer 2.1mm 2.1x7x0.25	2	02	CA08642B	Head Base Arm Sub Ass'y	1
L06	0E00922A	M2x3 S Pan	1	L01	0F00165A	E-Ring 1.2mm	1
C03	CA08670A	Reel Mechanism Ass'y Serial Nos.: C60431061 - 03398 C60701001 - 01260	1	E01	CA08672A	FF Arm Ass'y Serial No.: C60501001 - C607031001.	1
01	0C08727A	Idler Gear	1				
02	0C08678B	Pinion Gear	1				
03	CA08627B	Pivot Suspension Arm Ass'y	1	01	0C08731A	F Idler A	1
04	0C08866A	Pivot Suspension Arm Spring	1	02	CA08626C	FF Arm Sub Ass'y	1
05	0C08864B	Brake Spring	1	L01	0E03181A	Mylar Washer 1.6mm 1.6x3.5x0.25	1
06	0C08690A	Brake Shoe	2	L02	0E03197A	Nylon Washer FF20 2.1x4.0x0.25	1
07	0C08729B	RB Plate	1				
08	CA08635F	Take-up Reel Hub Ass'y	1	E02	CA08671A	Rewind Arm Ass'y Serial No.: C60501001 - C60701001.	1
09	CA08641F	Supply Reel Hub Ass'y	1				
10	0C08742A	Back Tension Disc	1				
11	BA05814B	Shut-off P.C.B. Ass'y	1				
12	0C08729B	Idler Gear	1				
13	0C08709A	Back Tension Arm	1	01	0C08731A	F Idler A	1
14	0C08865A	Back Tension Arm Spring	1	02	CA08624E	Rewind Arm Sub Ass'y	1
15	CA08634D	Reel Chassis Ass'y	1	L01	0E03181A	Mylar Washer 1.6mm 1.6x3.5x0.25	1
16	CA08672A	FF Arm Ass'y	1	L02	0E03197A	Nylon Washer FF20 2.1x4.0x0.25	1
17	CA08671A	Rewind Arm Ass'y	1				
18	0C08778A	FR Drum	1				
19	CA08631A	Clutch Disc Ass'y	1				
20	CA08673A	Magnet Clutch Pulley Ass'y	1				
L01	0E03181A	Mylar Washer 1.6mm 1.6x3.5x0.25	4				
L02	0E00104A	E-Ring 5mm	1				
L03	0E00442A	E-Ring 1.5mm	6				
L04	0E03195A	Nylon Washer 3.6mm 3.6x6x0.25	1				
L05	0E03193A	Nylon Washer 2.1mm 2.1x7x0.25	2				
L06	0E00922A	M2x3 S Pan	1				

8. MOUNTING DIAGRAMS AND PARTS LIST

Notes: 1. Mounting diagram shows a dip side view of the printed circuit board.

2. Diode is MA221 or RLS-73 unless otherwise specified.

3. Following transistors are interchangeable with each other.

2SC945, 2SC536SP, 2SC2458, 2SC2785

4. Abbreviation for part name:

TR - Transistor, SiD - Silicon Diode, ZD - Zener Diode

RK - Carbon Resistor, RM - Metal Film Resistor, RF - Fail Safe Type Resistor

CE - Electrolytic Capacitor, CM - Mylar Capacitor, CC - Ceramic Capacitor, CP - PP Capacitor,

CT - Tantalum Capacitor

8.1. Line Filter P.C.B. Ass'y

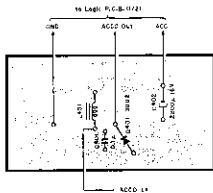


Fig. 8.1

8.2. Transistor P.C.B. Ass'y



Fig. 8.2

8.3. Shut-off P.C.B. Ass'y



Fig. 8.3

8.4. Lamp P.C.B. Ass'y

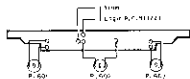


Fig. 8.4

8.5. Solenoid P.C.B. Ass'y



Fig. 8.5

Schematic Ref. No.	Part No.	Description
	BA05501A	Line Filter P.C.B. Ass'y
D401	0B60126E	Line Filter P.C.B.
L401	0B06468A	SiD 300-2
C401	0B07107A	Choke Coil
C402	0B09292A	CC 0.1u 60V Z
	0B08894A	CE 2200u 16V
	0B06058E	GND Cable (1)
	0B00069A	ACC Cable (1)
	0B90019A	SK Binder (2)
	BA05497A	Transistor P.C.B. Ass'y
Q405	0B60123A	Transistor P.C.B.
FC1	0B06302A	TR ZSB772 (P.Q)
	0B82346A	Flat Cable 3P 120mm
	0J04855B	Wire Holder
	0E00507A	Nut Hex M3 (1)
	0E00510A	M3x8 @ Pan (2A) (1)
	BA05614R	Shut-off P.C.B. Ass'y Serial No.: CS0503500 - CS0701261 -
IC604	0D60103B	Shut-off P.C.B.
CN9	0B11062A	Hall IC DN6838
	0B82358A	3P-H Connector 50mm
	BA05429A	Shut-off P.C.B. Ass'y Serial No.: C60601001 - 02298 C60701001 - 01250
IC604	0B60103A	Shut-off P.C.B.
CP3	0B11062A	Hall IC DN6835
	0H82297R	3P Coupler
	BA05484A	Lamp P.C.B. Ass'y
PL601,602	0B60121A	Lamp P.C.B.
603	0B90030A	Lamp 60mA 14V
	0H04670B	Illuminator B (1)
	BA05430A	Solenoid P.C.B. Ass'y
CN8	0B60117B	Solenoid P.C.B.
	0B81042A	SP-S Post

8.11. Tuner P.C.B. Assy
 (1) For TD-700
 (U.S.A. & Canada)

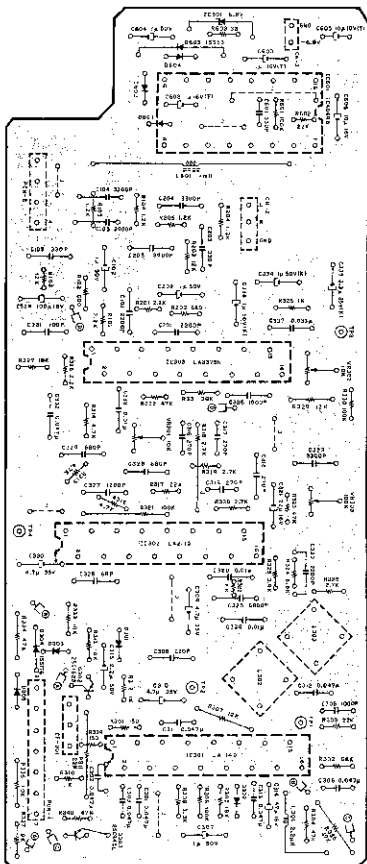


Fig. 8.11.1

Schematic Ref. No.	Part No.	Description	Schematic Ref. No.	Part No.	Description
	BA05424B	Tuner P.C.B. Assy TD-700 (U.S.A. & Canada)	C326	0B41191A	C 68P 100V J
			C327	0B05687A	CM 1200P 50V J
			C328,329	0B06571A	CM 880P 50V J
			C331	0B41366A	CF 100P 50V J
			C332	0B05798A	CM 0.047μ 50V J
			C334,338	0B40263A	CF 1μ 50V K
			C335	0B40264A	CE 3.3μ 35V K
			C336	0B41225A	CF 1000P 100V J
			C337	0B05583A	CM 0.03μ 50V J
			C601	0B43055A	CC 330P 50V K
			C602	0B43025A	CT 1μ 16V
			C605	0B43020A	CT 10μ 10V
			C606	0B40162A	CE 10μ 16V
			C7301	0B41076A	Ceramic Filter SFE10,7MS3GKY
D304	0B06298A	SD 18S17E	CN3	0B81208A	2P-S Post (1)
D306,604	0B13003A	SD M.L.N-73	PCN2	0B81283A	SP-S Post (1)
D603	0B06181A	SD 18S53	PCN3	0B32285A	4P Connector (1)
L301	0B51108A	Micro Coil 2.2μH	PCN4	0B82289A	7P Connector (3)
L302	0B51142A	Del. Coil 37-1291-01		0E00764A	M2.6x6 Φ Pan (2A) (1)
L303	0B06712A	Det. Coil 37-1057-01		0J04869A	P.C.B. Holder Stack (1)
L601	0B51040A	Micro Coil 1mH		0B81117A	Contact Pin IP (4)
VR301,302	0E32935A	Potentiometer 10K		0J04871B	Shield Case (1)
VR303	0E32938A	Potentiometer 100K			
R101,201	0E23081A	KK 2.2K 1/8W J			
R102,202	0E23069A	RK 68Ω 1/8W J			
R103,203	0E23099A	RK 12K 1/8W J			
R104,105	0E23075A	RK 1.2K 1/8W J			
R204,206					
R301,330	0E23053A	RK 15Ω 1/8W J			
R302	0E23117A	RK 68K 1/8W J			
R303,317	0E23105A	RK 22K 1/8W J			
R304					
R304,323	0E23113A	RK 47K 1/8W J			
R32,334					
R305,327	0E23103A	RK 18K 1/8W J			
R306,330	0E23121A	RK 100K 1/8W J			
R307	0E05650A	RK 12K 1/4W VJ			
R308	0E23086A	RK 3.3K 1/8W J			
R309	0E23101A	RK 15K 1/8W J			
R310,312	0E23073A	RK 1K 1/8W J			
R322,328					
R311	0E05616A	RE 22K 1/4W J			
R313,353	0E23097A	RK 10K 1/8W J			
R316,337					
R314,315	0E22089A	RE 4.7K 1/8W J			
R318					
R319,320	0E05629A	RE 2.7K 1/4W J			
R328	0E22083A	RE 2.7K 1/8W J			
R321	0B01889A	RK 100K 1/4W J			
R324	0E23093A	RE 8.8K 1/8W J			
R326	0E23067A	RE 3.9K 1/8W J			
R329	0B09703A	RK 12K 1/6W J			
R331	0E23111A	RK 39K 1/8W J			
R335	0B09716A	RK 1.6K 1/6W J			
R603	0E23037A	RK 33 1/6W J			
C101,201	0B41283A	CP 2200P 100V J			
C102,202	0B40255A	CE 1μ 50V			
C103,203	0E41213A	CP 330P 100V J			
C104,204	0B41237A	CP 3300P 100V J			
C105,205	0B41239A	CP 3900P 100V J			
C301,302	0E43053A	CC 0.047μ 50V K			
C303,306					
C311,312					
C318					
C305	0B43050A	CC 1000P 50V K			
C307,603	0B40173A	CE 1μ 50V			
C308					
C309,330	0B41394A	CP 220P 50V J			
C310	0B40268A	CE 4.7μ 35V			
C314	0B40165A	CE 47μ 16V			
C315	0B40174A	CE 2.2μ 50V			
C316,317	0B43049A	CC 270P 50V K			
C318	0E09284A	CC 270P 50V J			
C320,323	0E41094A	CM 0.01μ 50V			
C321					
C322	0B40163A	CF 22μ 16V			
C323	0E01802A	CM 2200P 50V J			
C324	0E01814A	CM 3300P 50V J			
C325	0E40206A	CF 100μ 16V			
C325	0E05590A	CM 8800P 50V J			

(2) For TD-700 (Australia & Others), TD-700E and TD-700D

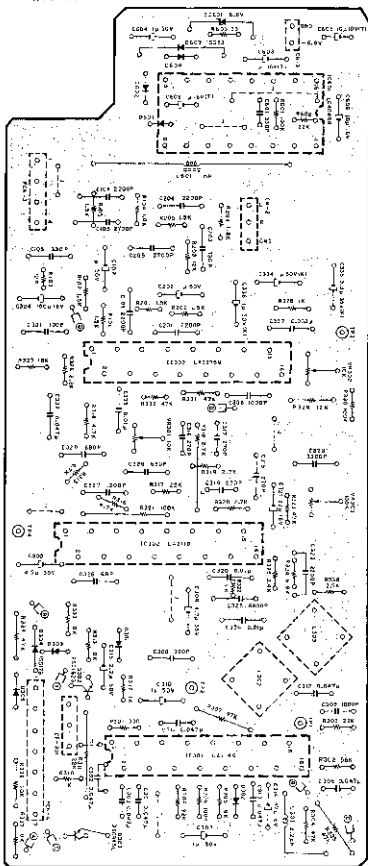


Fig. 8.11.2

Schematic Ref. No.	Part No.	Description	Schematic Ref. No.	Part No.	Description
	RA05458A	Tuner F.C.B. Assy TD-700 (Australia & Others), TD-700E & TD-700D	C326,329 C331 C332 C334,338 C335 C336 C337 C601 C602 C605 C606 CF301	OB65571A OB41386A OB03796A OB40263A OB40294A OB41225A OB65582A OB43055A OB43028A OB43020A OB40162A OB41076A	CM 680V 50V J CP 100P 50V J CM 0.047 μ 50V J CF 1 μ 50V K CE 3.3 μ 35V K CP 100P 160V J CM 0.02 μ 50V J CC 380P 50V K CT 1 μ 16V CT 10 μ 10V CE 10 μ 16V Ceramic Filter SFE10.7MSGGKY-A
IC301 IC302 IC303 IC601 Q302 Q303 ZD501 DR01,302 303,601 602	OB60116E OB06412A OB06414A OB06415B OB11068A OB14022A OB01872A OB06241A OB13064A	Tuner F.C.B. IC LA1140 IC LA2110 IC LA3876N IC LC4048B TR 28C162S TR 28C048L (P,Q) ZD 8.4V RD6.8EB2 SID MA221	CM3 PCN2 PCN3 PCN4	OB81036A OB81285A OB82288A OB80764A	TP-S Post (1) 3P-S Post (1) 4P Connector (1) 7P Connector (1) M2,6x6 ϕ Fan (2A)
D304 D305,604 D603 L301 L302 L303	OB06398A OB13053A OB06181A OB51100A OB51142A OB06712A	SID 158176 SID RLS-73 SID 18S13 Micro Coil 2.2 μ H Det. Co9 57-4291-01 Det. Co9 57-1057-01		OB4869A OB81117A OB64871B	F.C.B. Holder Stud (1) Contact Pin TP (4) Shield Case (1)
L601 VR301,302 VR303 R101,102 105,201 202,203 R103,203 R104,204 R301 R302 R303,308 317,602 R304,323 337,332 334 R305,327 R308,330 601 R307 R310,312 322,326 R311 R313,332 336,337 R314,315 316 R318 R319,320 328 R321 R324 R325 R326 R329 R335 R603 C107,104 201,204 C102,202 C103,203 C105,205 C201,302 303,306 311,312 313 C305 C307,310 603,604 C308 C309,330 C314 C315 C316,317 319 C318 C320,323 329 C321 C322 C323 C324 C325 C326 C327	OB51040A OB52025A OB32038A OB23077A OB23099A OB23079A OB23061A OB23115A OB23105A OB23113A OB23103A OB23121A OB05562A OB23073A OB06615A OB23097A OB23089A OB05629A OB23083A OB01889A OB23093A OB23087A OB23081A OB09703A OB09717A OB23037A OB41233A OB40255A OB41213A OB41236A OB43053A OB43050A OB40173A OB41894A OB40258A OB40189A OB40174A OB43049A OB09284A OB41094A OB40163A OB01802A OB01914A OB40206A OB05630A OB41187A OB05687A	Micro Coil 1mH Potentiometer 10K Potentiometer 100K RK 1.5K 1/8W J RK 12K 1/8W J RK 1.5K 1/8W J RK 330 1/8W J RK 56K 1/8W J RK 22K 1/8W J RK 47K 1/8W J RK 19K 1/8W J RK 100K 1/8W J RK 47K 1/4W VJ RK 1K 1/8W J RK 22K 1/4W J RK 10K 1/8W J RK 4.7K 1/8W J MK 2.7K 1/4W J RK 2.7K 1/8W J RK 100K 1/4W J RK 5.6K 1/8W J RK 3.9K 1/8W J RK 2.2K 1/8W J RK 12K 1/8W J RK 47K 1/8W J RK 3S 1/8W J CP 2200P 100V J CE 1 μ 50V CP 330P 100V J CP 2700P 100V J CC 0.047 μ 50V K CC 1000P 50V K CE 1 μ 50V CP 220P 50V J CE 4.7 μ 35V CE 47 μ 16V CE 2.2 μ 50V CC 270P 50V K CC 270P 50V J CM 0.01 μ 50V CE 22 μ 16V CM 2200P 50V J CM 330P 50V J CE 100 μ 16V CM 6800P 50V J C 68P 100V J CM 1200P 50V J			

(3) For TD-700 (Japan)

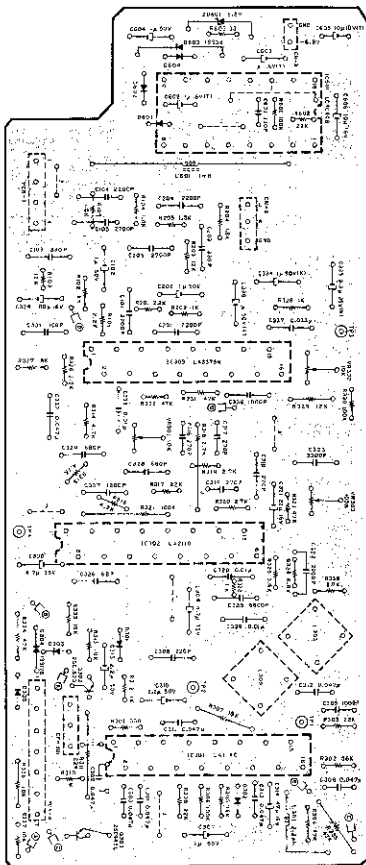


Fig. 8.11.3

Schematic Ref. No.	Part No.	Description	Schematic Ref. No.	Part No.	Description
	BA05423A	Tuner P.C.B. Assy TD-700 (Japan)	C332	0B06796A	CM 0.047 μ 50V J
			C334,338	0B40263A	CE 1 μ 50V K
1C301	0B60115E	Tuner P.C.B.	C335	0B40264A	CE 3.3 μ 55V K
1C302	0B06412A	IC LA1140	C336	0B41222A	CP 1000P 100V J
1C303	0B06414A	IC LA2110	C337	0B05583A	CM 0.033 μ 50V J
1C801	0B06415B	IC LA337 6N	C601	0B43035A	CC 330P 50V K
Q302	0B11066A	IC LC4048B	C602	0B43025A	CT 1 μ 16V
Q303	0B14022A	TR 2SC1623	C605	0B43020A	CT 10 μ 10V
Q303	0B01872A	TR 2SC845L (P,Q)	C606	0B40162A	CE 10 μ 16V
ZD901	0B09241A	ZD 5.1V RDP,SEB2	CF301	0B41075A	Ceramic Filter SPE10,7MLK-A
D301,302	0B13064A	SID MA221	CN3	0B81036A	2P-S Post (1)
303,501			PCN2	0B81283A	3P-S Post (1)
602			PCN3	0B82286A	4P Connector (1)
D304	0B06398A	SID 18S178	PCN4	0B82285A	TP Connector (1)
D305,604	0B13003A	SID RLS-73		0B00764A	M2.5x6 Φ Pan (2A)
D603	0B06181A	SID 15S53			(1)
L301	0B51106A	Micro Coi 2.2 μ H	0W4869A	P.C.B. Holder Stud	(1)
L302	0B51142A	Det. Coi 57-1291-01		0B81117A	Contact Pin 1P (4)
L303	0B06712A	Det. Coi 57-1057-01		0J04871B	Shield Case (1)
L601	0B57040A	Micro Coi 1mH			
VR301,302	0B32026A	Potentiometer 10K			
VR303	0B32038A	Potentiometer 100K			
R101,201	0B23067A	RK 2.2K 1/8W J			
226					
R102,202	0B23075A	RK 1K 1/8W J			
310,312					
322,328					
R102,203	0B23069A	RK 12K 1/8W J			
R104,204	0B23079A	RK 1.8K 1/8W J			
R106,205	0B23077A	RK 1.5K 1/8W J			
R301	0B23061A	RK 330 1/8W J			
R302	0B23115A	RK 56K 1/8W J			
R303,308	0B23105A	RK 22K 1/8W J			
317,602					
R304,322	0B23133A	RK 47K 1/8W J			
331,332					
334					
R305,327	0B23103A	RK 18K 1/8W J			
R306,330	0B23121A	RK 100K 1/8W J			
601					
R307	0B05661A	RK 18K 1/4W VJ			
R311	0B06615A	RK 22K 1/4W J			
R312,333	0B23097A	RK 10K 1/8W J			
336,337					
R314,315	0B23089A	RK 4.7K 1/8W J			
316					
R318	0B05629A	RK 2.7K 1/4W J			
R319,320	0B23088A	RK 2.7K 1/8W J			
338					
R321	0B01889A	RK 100K 1/4W J			
R324	0B23053A	RK 6.8K 1/8W J			
R325	0B23087A	RK 3.9K 1/8W J			
R329	0B09763A	RK 12K 1/8W J			
R335	0B09717A	RK 47K 1/8W J			
R803	0B23037A	RK 33 1/8W J			
C101,104	0B41235A	CP 2200P 100V J			
201,204					
C102,202	0B40255A	CE 1 μ 50V			
C103,203	0B41213A	CP 330P 100V J			
C105,206	0B41235A	CP 2700P 100V J			
C301,302	0B48055A	CC 0.047 μ 50V K			
303,306					
311,312					
313					
C308	0B43050A	CC 1000P 50V K			
C307,603	0B40175A	CE 1 μ 50V			
604					
C308	0B41394A	CP 220P 50V J			
C309,330	0B40256A	CE 4.7 μ 35V			
C310,318	0B40174A	CE 2.2 μ 50V J			
C314	0B40165A	CE 47 μ 16V			
C316,317	0B43049A	CC 270P 50V K			
319					
C318	0B09284A	CC 270P 50V J			
C320,333	0B41094A	CM 0.01 μ 50V			
339					
C321	0B40165A	CF 22 μ 16V			
C322	0B01802A	CM 2200P 50V J			
C323	0B01934A	CM 3300P 50V J			
C324	0B40206A	CE 100 μ 16V			
C325	0B05580A	CM 680P 50V J			
C326	0B41131A	C 5SP 100V J			
C327	0B09687A	CM 1200P 50V J			
C328,329	0B05571A	CM 680P 50V J			
C331	0B41386A	CP 100P 50V J			

Schematic Ref. No.	Part No.	Description	Schematic Ref. No.	Part No.	Description
	BA05611A	Amp. P.C.B. Assy Serial No.: C60501051 - C60701301 -	R301 R308 C105,106 205,206 C107,207 C108,208	0B23091A RK 5.6K 1/8W J 0B23093A RK 680 1/8W J 0B41365A CM 0.033p 50V J	
	-- Dolby NR --			0B41373A CM 0.068p 50V J 0B40256A CE 2.2u 50V	
IC101,201 ZD302	0B14119A 0N13011A	1C TEA0665 ZD 5.6V		-- Line Amp. --	
D201 L101,201 L102,202 R123,223 R124,224 R125,225 R126,226 R127,227 R128,228 R129,229 R130,230 R131,231 R132,232 R303 R309 C109,209 C110,110 210,210 C111,111 211,211 302 C112,112 212,212 C113,113 213,213 C114,114 214,220 C115,215 C119,219 C130,230	0B13009A SID RL5-73 0B51146A Inductor 8.2mH 0B23057A L-C Block RK 220 1/8W J 0B23089A RK 4.7K 1/8W J 0B23071A RK 820 1/8W J 0B23059A RK 270 1/8W J 0B25007A RM 35K 1/8W F 0B25006A RM 82K 1/8W F 0B23090A RK 5.1K 1/8W J 0B23117A RE 68K 1/8W J 0B23081A RK 2.2K 1/8W J 302 0B23447A MM 82K 1/8W F 0B23097A RK 10K 1/8W J 0B09669A RK 470 1/8W J 0B05459A CM 5600P 50V J 0B41141A CP 4700P 100V G	IC303 R103,203 Q301 R132,134 135,135 235,234 235,235 R137,237 R138,139 238,239 R147,247 R148,248 R304 R305 C121,122 221,222 SW301	0B11001A IC NJM4358M 0B02598A TR 28C278 0B14027A TR 25A812 0B26009A RM 100K 1/8W F 0B26010A RM 8.25K 1/8W F 0B26008A RM 10K 1/8W F 0B23072A RK 1K 1/8W J 0B23088A RK 4.7K 1/8W J 0B23097A RK 10K 1/8W J 0B23121A RK 100K 1/8W J 0B41476A CM 0.1u 50V J		
				-- Miscellaneous --	
				0B60113E Amp. P.C.B. 0B81187A 4P-S Post C02 2P-M Connector C03 1P Connector C05 4P-H Connector C07 6P Coupler EMC-406 C02 2P Coupler EMC-502 PCN1 3P Connector PCN2 6P Connector 0B90021A Band EG-9 0B00174A Earth Loop P-4 (2)	
				BA05476B Amp. P.C.B. Assy Serial No.: C60501001 - 03550 C60701001 - 01300	
				Comments is the same as BA05611A except for the following parts:	
IC301 Q101,201 Q102,202 ZD301	0B11017A 0B06370A 0B14022A 0B12162A	IC NJM072S-E FET 2SK170 (GR) TR 2SC1623 ZD 8.2V RDE.2J8-T1r2		0B82283A 6P Coupler TVQ (1) 0B82286B 2P Coupler TVQ (1)	
VR101,201 R101,108 201,205 R102,202 R103,203 R105,205 R107,207 R108,208 R109,209 R110,210 R111,211 R112,212 R113,213 R306 R307 C101,201 C102,202 C103,203 C104,204 C301 C302	0B23039A 0B23121A 0B22601A 0B22644A 0B22610A 0B22548A 0B22497A 0B22602A 0B22603A 0B23093A 0B23007A 0B23145A 0B23081A 0B23059A 0B41177A 0B49259A 0B09858A 0B09861A 0B40357A 0B40356A 0B11177A 0B90044A	Potentiometer 10K RK 100K 1/8W J RM 80.6 1/4W F RM 1.54K 1/4W F RM 8.25K 1/8W F RM 4.7M 1/4W J RM 210K 1/8W F RM 2.16K 1/8W F RM 2.67K 1/8W F RK 6.8K 1/8W J RK 10K 1/8W J RK 1M 1/8W J RK 2.2K 1/8W J RK 680 1/8W J CM 0.33p 50V J CE 10u 16V CM 0.01u 50V J CF 0.027u 50V J CE 330u 10V CE 220u 10V Contact Pin 1P (1) Shield Belt (1)	CF1 CP2		
				-- Subsonic Filter --	
IC302 IC305 D301 R115,215 R118,118 215,215 R117,217 R119,219 R120,220 R121,221 R122,222 R149,249	0B11032A 0B11037A 0B13069A 0B23115A 0B23137A 0B23120A 0B23139A 0B25004A 0B23145A 0B26005A 0B23141A	IC LF353N IC 100k 50p SID DAP202K RK 56K 1/8W J RK 470K 1/8W J RK 220K 1/8W J RK 560K 1/8W J RM 8.56K 1/8W F RM 1M 1/8W J RM 1K 1/8W F RK 680K 1/8W J			

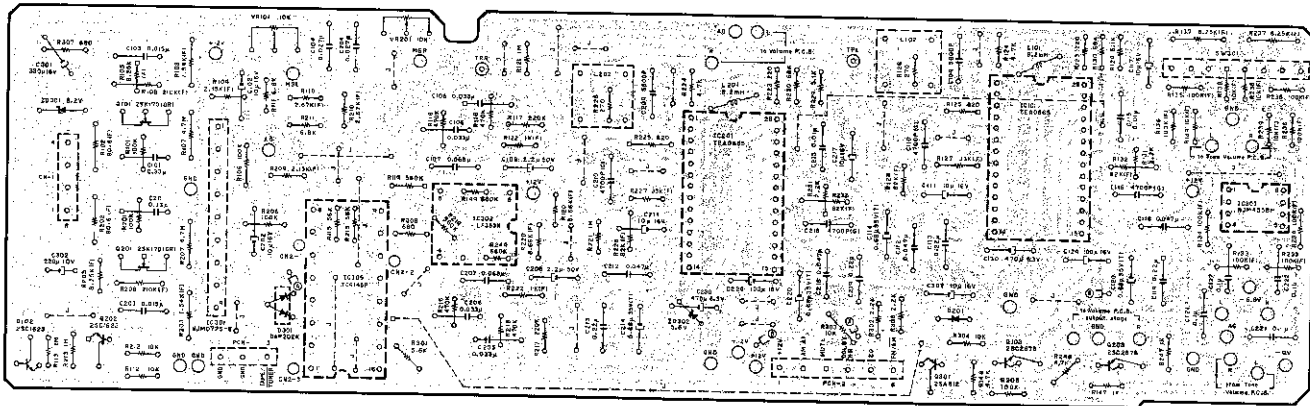


Fig. 8.12

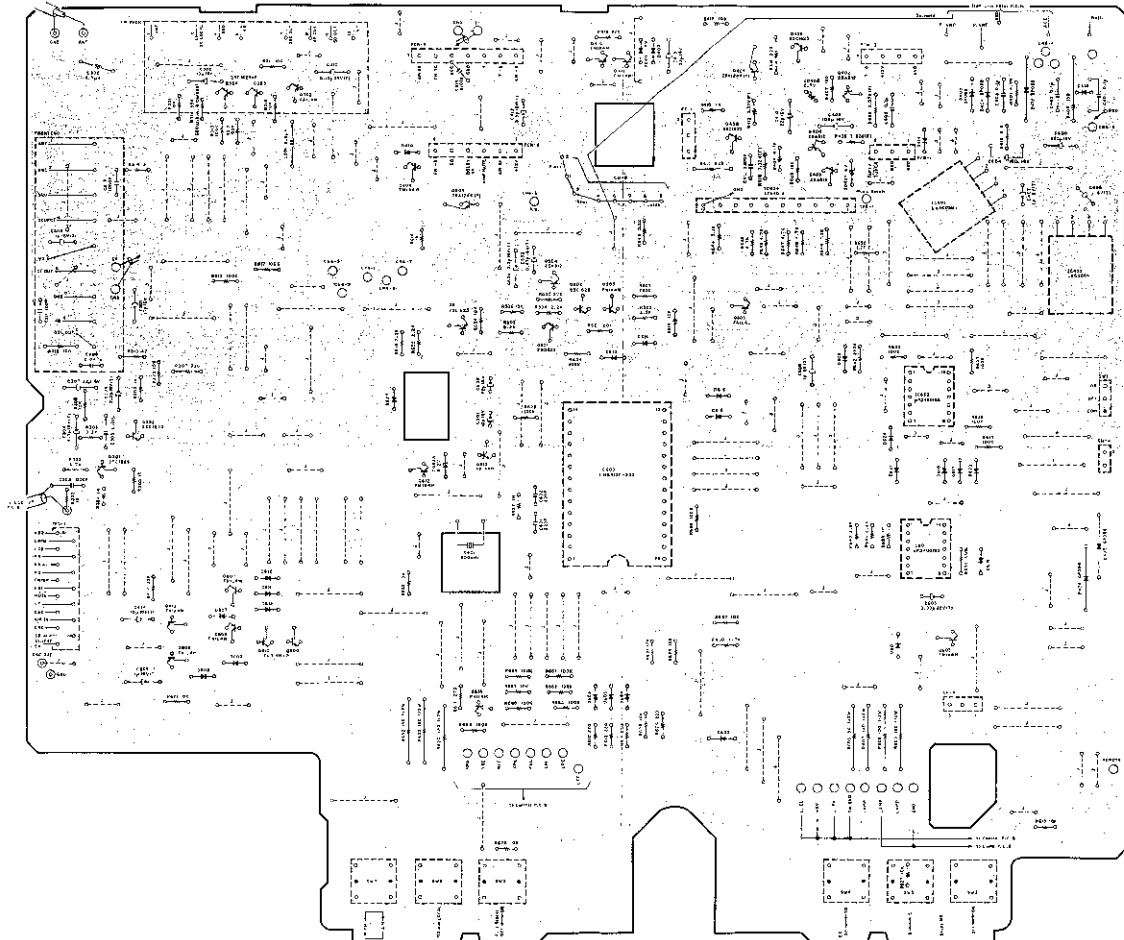
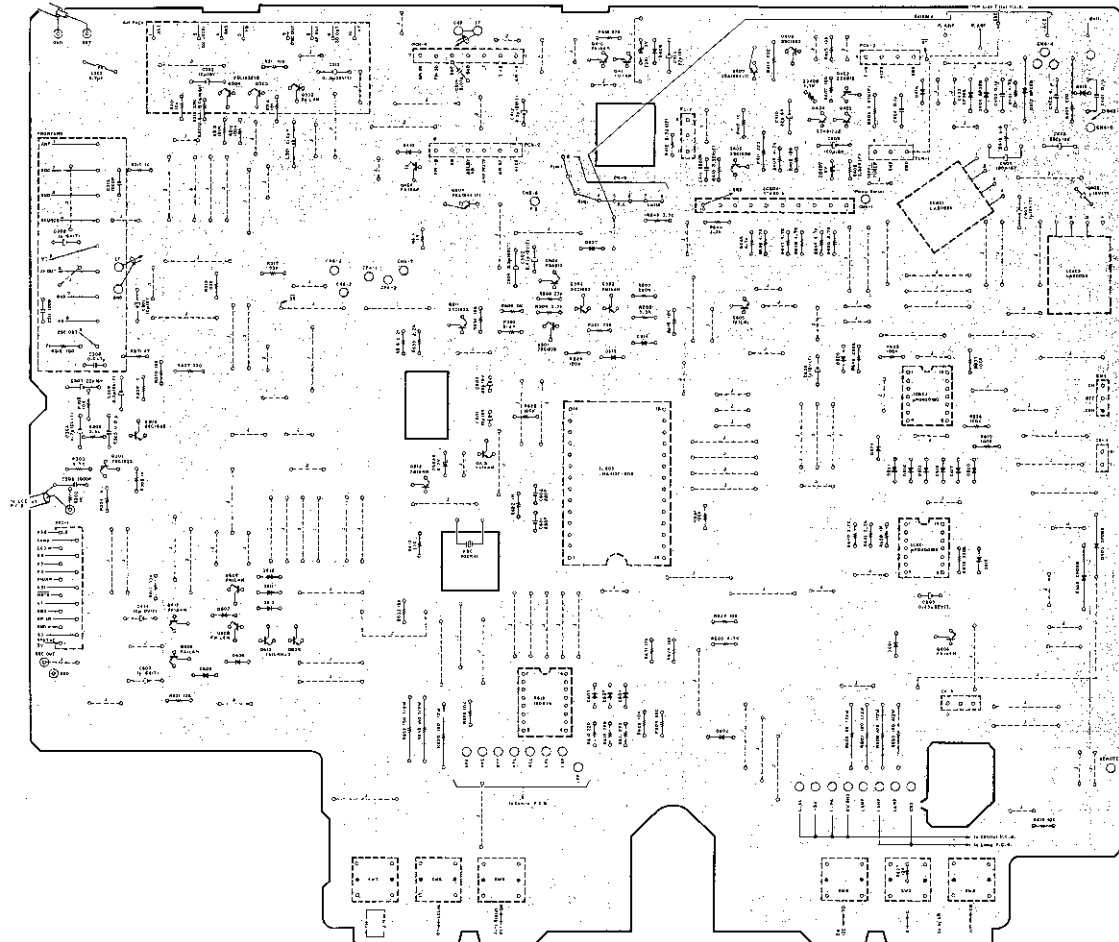


FIG. 8.13.1 C66804101 - (TD-700 & TD-700E)

Schematic Ref. No.	Part No.	Description	Schematic Ref. No.	Part No.	Description	Schematic Ref. No.	Part No.	Description
BA05618A		Logic P.C.B. Assy	D403,404	0B06109A	SID G708B	0B01004A		Front-end TD-700
BA05619A		Logic P.C.B. Assy	400,406			0B01003A		Front-end TD-700
BA05620A		TD-700 (U.S.A. & Canada)	D409,410	0B13003A	SID RLS-73	— Miscellaneous —		
		Logic P.C.B. Assy	D413,414	0B13064A	SID MA-221	0B60109D		Logic P.C.B.
		TD-700 (Australia & Others) & TD-700E	R401,409	0B23084A	RK 4.7K 1/8W J	0B81237A		3-S Post
BA05622A		Logic P.C.B. Assy	R404	0B01933A	RK 220 1/4W J	0B81273B		4P Terminal (1)
		Serial No.:	R405	0B26012A	RM 3.57K 1/8W F	0B82290A		4P Connector (1)
		C60603399 - 04100	R406,412	0B26013A	RM 3.32K 1/8W F	0B82291A		7P Connector (1)
		C60701261	R413			0B82296B		2P Coupler (1)
— CPU —			R416	0B23053A	RK 150 1/8W J	0B82307C		T-H Connector (1)
			R408	0B23051A	RK 120 1/8W J	0B82309B		8P-H Connector (1)
			R410	0B23073A	RK 1K 1/8W J	0B82334A		3P Connector (1)
			R411,414	0B23150A	RK 220 7/4W J	0B82366A		6P Connector (1)
			R416	0B23097A	RK 10K 1/8W J	0B90019A		SK Binder (1)
			R417	0B23119A	RE 82K 1/8W J	0E00174A		Earth Lug B-4 (4)
			R418	0B23021A	RK 8.8 1/8W J	0B81272B		4P Terminal Male
			C407,402	0B05792A	C 0.1u 50V Z	TD-700D (1)		4P Terminal Female
			C403	0B43054A	CC 0.1u 50V Z	TD-700D (1)		4P Terminal Male
			C404,408	0B40206A	CE 100u 16V	0B81273B		4P Terminal Female
			C405	0B40800A	CE 330u 16V	TD-700D (1)		4P Terminal Male
			C406,407	0B43025A	CT 1u 16V	TD-700 & TD-700E (1)		Line Filter P.C.B. Assy
			C410,415	0B40763A	CE 22u 16V	BA06497A		Transistor P.C.B. Assy (1)
			C411	0B43051A	CC 2200P 50V K			
			C412	0B43028A	CT 3.3u 16V			
			C414	0B43020A	CT 10u 10V			
				— Reset —				
IC601,602	0B11063A	IC uPD4001BG	Q601,602	0B14022A	TR 25C1623			
IC603	0B11051A	IC LM4118E-503	Q603	0B14153A	TR FN1A4M			
IC604	0B10048A	IC STA401A	Q604	0B14027A	TR 28A812			
Q603,612	0B14153A	TR FN1A4M	R501	0B23104A	RK 20K 1/8W J			
Q604	0B10017A	TR 28A1244 (Y)	R502	0B23085A	RK 3.3K 1/8W J			
Q605	0B14149A	TR FA1A4L	R503	0B23095A	RK 8.2K 1/8W J			
Q606,509	0B14146A	TR FA1A4M	R504	0B23087A	RK 2.2K 1/8W J			
610			R505	0B23107A	RK 27K 1/8W J			
Q607,608	0B14151A	TR FN114M	R506	0B23107A	RK 10K 1/8W J			
Q611	0B14149A	TR FA1A4L	R507	0B23129A	RK 220K 1/8W J			
Q612	0B14144A	TR FA1A4M	C601	0M40162A	CE 10u 16V			
ZD 823	0B13024A	ZD 8.2V	C602	0B43023A	CT 0.47u 16V			
		RL78.2CTE-11		— Tuner —				
D601-621	0B13064A	SID MA221 (23)	Q601,602	0B14022A	TR 25C1623			
D624,627			Q603	0B14153A	TR FN1A4M			
X601	0B02307A	Crystal 800KHz	Q604	0B14027A	TR 28A812			
R605,620	0B124035A	RF 180 1/2W J	R501	0B23104A	RK 20K 1/8W J			
R606	0B24043A	RF 56 1/2W J	R502	0B23085A	RK 3.3K 1/8W J			
R607,608	0B09097A	RF 100 1/2W J	R503	0B23095A	RK 8.2K 1/8W J			
R609,610	0B23057A	RK 220 1/8W J	R504	0B23087A	RK 2.2K 1/8W J			
R611,612			R505	0B23107A	RK 27K 1/8W J			
R613	0B23059A	RK 270 1/8W J	R506	0B23107A	RK 10K 1/8W J			
R614	0B23073A	RK 1K 1/8W J	R507	0B23129A	RK 220K 1/8W J			
R615,619	0B23097A	RK 10K 1/8W J	C601	0M40162A	CE 10u 16V			
621,626			C602	0B43023A	CT 0.47u 16V			
627,628				— Tuner —				
629,632			Q601,602	0B14022A	TR 25C1623			
633,654			Q603	0B14153A	TR FN1A4M			
R616,640	0B23081A	RK 2.2K 1/8W J	J301	0B51106A	Micro Coil 2.2uH			
641,655			L302	0B51011A	Micro Coil 4.7uH			
R617,623	0B23121A	RK 100K 1/8W J	R301,308	0B23097A	RK 10K 1/8W J			
624,634			311,316					
635,636			R302,304	0B23073A	RK 1K 1/8W J			
637			306,309					
R618	0B21001A	R-Network 100Kx6	R303	0B23069A	RK 4.7K 1/8W J			
R622,638	0B23145A	RK 1M 1/8W J	R306	0B23085A	RK 3.3K 1/8W J			
R630	0B23089A	RK 4.7K 1/8W J (7)	R307	0B23061A	RK 330 1/8W J			
645-650			R310	0B23041A	RK 47 1/8W J			
R631	0B23096A	RK 12K 1/8W J	R312,313	0B23121A	RK 100K 1/8W J			
R639	0B23153A	RK 330K 1/8W J	315,317					
R642	0B23129A	RK 220K 1/8W J	R314	0B23109A	RK 33K 1/8W J			
R648,644	0B23085A	RK 3.3K 1/8W J	R318	0B08563A	RK 100 1/8W J			
R652	0B24040A	RF 150 1/2W J	R320	0B23101A	RK 15K 1/8W J			
C601,602	0B43048A	CC 220P 50V K	C303	0B43050A	CC 1000P 50V K			
C603	0B40163A	CT 22u 16V	C304	0B40280A	CT 4.7u 16V			
C604	0B43028A	CT 3.3u 16V	C305	0B41994A	CM 0.01u 50V J			
C605	0B43037A	CT 0.33u 36V	C306	0B43063A	CC 0.047u 50V K			
C606,607	0B43025A	CT 1u 16V	C307	0B40103A	CE 22u 16V			
SW1-5	0B70018A	Push Switch	C308	0B43025A	CT 1u 16V			
SW6	0B70021A	Slide Switch	C309	0B40279A	CT 3.3u 16V			
SW7	0B70015A	Push Switch	C310	0B43063A	CC 0.1u 36V			
CN4	0B81025A	2P-T Post	C313	0B43047A	CC 100P 50V K			
FFC1	0B81279A	15P FFC Connector	C314	0B41082A	CM 1000P 50V J			
— Regulator —				0B43062A	CC 0.01u 50V K			
IC401,402	0B11036A	IC LA5005H		0B81006A	Front-end TD-700			
Q402,403	0B14027A	TR 28A812			(Australia & Others),			
Q406,408	0B14022A	TR 25C1623			TD-700E &			
Q407	0B10017A	TR 28A1244 (Y)			TD-700D			
Q409,410	0B14152A	TR FN1A4M						
Q411,412	0B14144A	TR FA1A4M						
ZD407	0B13014A	ZD 6V						
		PLZ6.2BTE-11						
		ZD 2.7V						
		RDZ.7MB-T1A						
		ZD W						
		RLZ9.16TE-11						



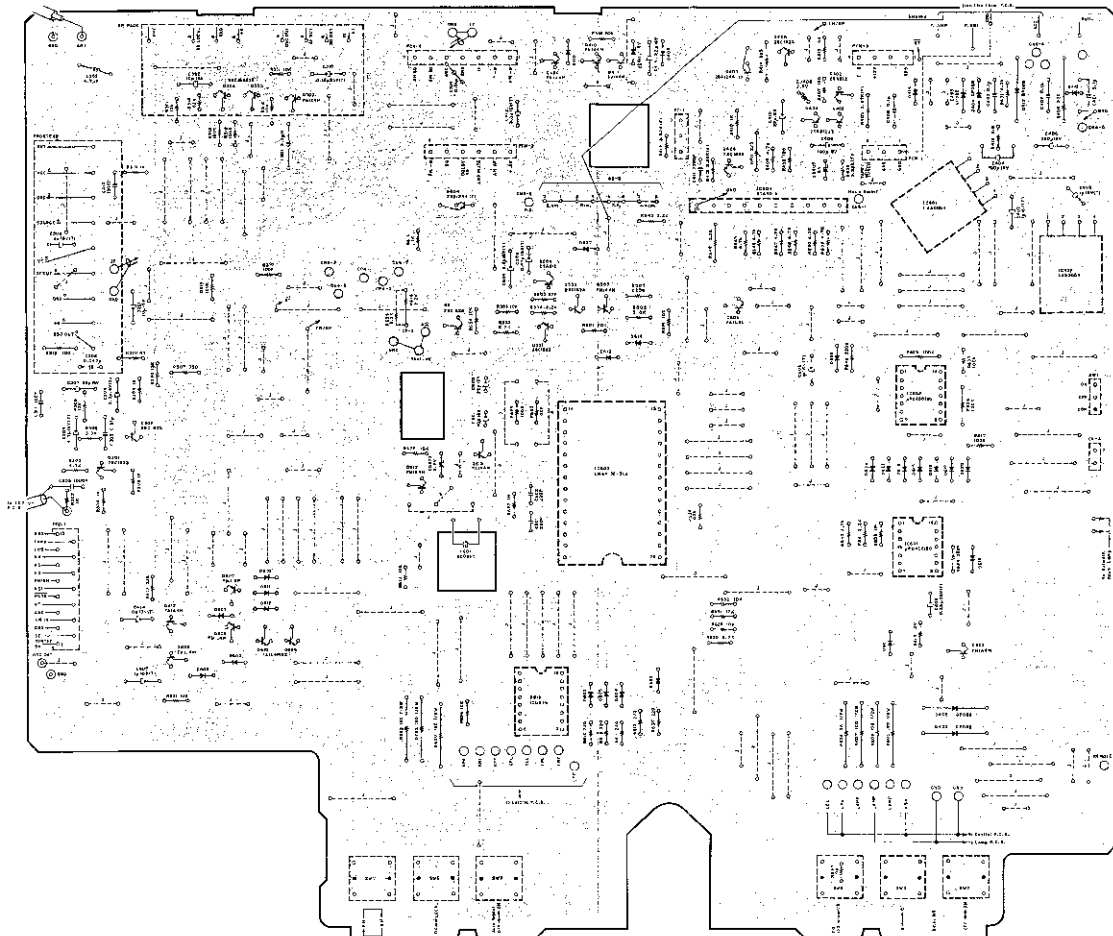


FIG. K.13.3 C00501001 - 03298 (TD-700 & TD-700E)
C09701001 - 01260 (TD-700D)

9. SCHEMATIC DIAGRAMS

Schematic Ref. No.	Part No.	Description	Schematic Ref. No.	Part No.	Description	Schematic Ref. No.	Part No.	Description
BA05407A		Logic F.C.B. Assy TD-700 (Japan)	D403,404	DB06105A	SID GP08B			Miscellaneous -
BA05427A		Logic F.C.B. Assy TD-700 (U.S.A. & Canada)	D405,410	DB13003A	SD RL3.73	CP3		DB0109QZ Logic P.C.B.
BA05451A		Logic F.C.B. Assy TD-700 (Australia & Others)	D411,414	DB23699A	RM 3.2K 1/8W J			DB22296A 3P Coupler
BA05402A		Logic F.C.B. Assy TD-700	R401,409	DB23699A	RM 4.7K 1/8W J			DB21275B 4P Terminal
		Serial No.: C6001001-03298	R411,414	DB23699A	RM 1.4W J			DB22296A 2P Connector (1)
		C6071001-01250	R415	DB23699A	RM 3.97K 1/8W F			DB22296B 2P Connector (1)
CFU -			R417	DB23699A	RM 3.2K 1/8W F			DB23297C 7P-I Connector (1)
			R418	DB23699A	RM 150 1/8W J			DB23297D 7P-II Connector (1)
			R419	DB23699A	RM 1K 1/8W J			DB23234A 3P Connector (1)
			R421	DB23699A	RM 1K 1/8W J			DB23235A 3P Connector (1)
			R422	DB23699A	RM 1.4W J			DB23235B 3K Resistor (1)
			R423	DB23699A	RM 10K 1/8W J			DB00717A 4P Terminal Male
			R424	DB23699A	RM 150 1/8W J			DB01127B TD-700 (1)
			R425	DB23699A	RM 1.4W J			DB01127C 4P Terminal Female
			R426	DB23699A	RM 6.8 1/8W J			DB01127D TD-700 (1)
			R427	DB23699A	CC 0.1u 50V Z			DB01127E 4P Terminal Male
			R428	DB23699A	CC 100u 16V			DB01127F TD-700 (1)
			R429	DB23699A	CC 10u 16V Z			DB01127G TD-700 & TD-700E
			R430	DB23699A	CC 10u 16V Z			BA0501A Line Filter P.C.B. Assy
			R431	DB23699A	CC 10u 16V Z			BA05497A Transistor P.C.R. Assy
			R432	DB23699A	CC 10u 16V Z			
			R433	DB23699A	CC 10u 16V Z			
			R434	DB23699A	CC 10u 16V Z			
			R435	DB23699A	CC 10u 16V Z			
			R436	DB23699A	CC 10u 16V Z			
			R437	DB23699A	CC 10u 16V Z			
			R438	DB23699A	CC 10u 16V Z			
			R439	DB23699A	CC 10u 16V Z			
			R440	DB23699A	CC 10u 16V Z			
			R441	DB23699A	CC 10u 16V Z			
			R442	DB23699A	CC 10u 16V Z			
			R443	DB23699A	CC 10u 16V Z			
			R444	DB23699A	CC 10u 16V Z			
			R445	DB23699A	CC 10u 16V Z			
			R446	DB23699A	CC 10u 16V Z			
			R447	DB23699A	CC 10u 16V Z			
			R448	DB23699A	CC 10u 16V Z			
			R449	DB23699A	CC 10u 16V Z			
			R450	DB23699A	CC 10u 16V Z			
			R451	DB23699A	CC 10u 16V Z			
			R452	DB23699A	CC 10u 16V Z			
			R453	DB23699A	CC 10u 16V Z			
			R454	DB23699A	CC 10u 16V Z			
			R455	DB23699A	CC 10u 16V Z			
			R456	DB23699A	CC 10u 16V Z			
			R457	DB23699A	CC 10u 16V Z			
			R458	DB23699A	CC 10u 16V Z			
			R459	DB23699A	CC 10u 16V Z			
			R460	DB23699A	CC 10u 16V Z			
			R461	DB23699A	CC 10u 16V Z			
			R462	DB23699A	CC 10u 16V Z			
			R463	DB23699A	CC 10u 16V Z			
			R464	DB23699A	CC 10u 16V Z			
			R465	DB23699A	CC 10u 16V Z			
			R466	DB23699A	CC 10u 16V Z			
			R467	DB23699A	CC 10u 16V Z			
			R468	DB23699A	CC 10u 16V Z			
			R469	DB23699A	CC 10u 16V Z			
			R470	DB23699A	CC 10u 16V Z			
			R471	DB23699A	CC 10u 16V Z			
			R472	DB23699A	CC 10u 16V Z			
			R473	DB23699A	CC 10u 16V Z			
			R474	DB23699A	CC 10u 16V Z			
			R475	DB23699A	CC 10u 16V Z			
			R476	DB23699A	CC 10u 16V Z			
			R477	DB23699A	CC 10u 16V Z			
			R478	DB23699A	CC 10u 16V Z			
			R479	DB23699A	CC 10u 16V Z			
			R480	DB23699A	CC 10u 16V Z			
			R481	DB23699A	CC 10u 16V Z			
			R482	DB23699A	CC 10u 16V Z			
			R483	DB23699A	CC 10u 16V Z			
			R484	DB23699A	CC 10u 16V Z			
			R485	DB23699A	CC 10u 16V Z			
			R486	DB23699A	CC 10u 16V Z			
			R487	DB23699A	CC 10u 16V Z			
			R488	DB23699A	CC 10u 16V Z			
			R489	DB23699A	CC 10u 16V Z			
			R490	DB23699A	CC 10u 16V Z			
			R491	DB23699A	CC 10u 16V Z			
			R492	DB23699A	CC 10u 16V Z			
			R493	DB23699A	CC 10u 16V Z			
			R494	DB23699A	CC 10u 16V Z			
			R495	DB23699A	CC 10u 16V Z			
			R496	DB23699A	CC 10u 16V Z			
			R497	DB23699A	CC 10u 16V Z			
			R498	DB23699A	CC 10u 16V Z			
			R499	DB23699A	CC 10u 16V Z			
			R500	DB23699A	CC 10u 16V Z			
			R501	DB23699A	CC 10u 16V Z			
			R502	DB23699A	CC 10u 16V Z			
			R503	DB23699A	CC 10u 16V Z			
			R504	DB23699A	CC 10u 16V Z			
			R505	DB23699A	CC 10u 16V Z			
			R506	DB23699A	CC 10u 16V Z			
			R507	DB23699A	CC 10u 16V Z			
			R508	DB23699A	CC 10u 16V Z			
			R509	DB23699A	CC 10u 16V Z			
			R510	DB23699A	CC 10u 16V Z			
			R511	DB23699A	CC 10u 16V Z			
			R512	DB23699A	CC 10u 16V Z			
			R513	DB23699A	CC 10u 16V Z			
			R514	DB23699A	CC 10u 16V Z			
			R515	DB23699A	CC 10u 16V Z			
			R516	DB23699A	CC 10u 16V Z			
			R517	DB23699A	CC 10u 16V Z			
			R518	DB23699A	CC 10u 16V Z			
			R519	DB23699A	CC 10u 16V Z			
			R520	DB23699A	CC 10u 16V Z			
			R521	DB23699A	CC 10u 16V Z			
			R522	DB23699A	CC 10u 16V Z			
			R523	DB23699A	CC 10u 16V Z			
			R524	DB23699A	CC 10u 16V Z			
			R525	DB23699A	CC 10u 16V Z			
			R526	DB23699A	CC 10u 16V Z			
			R527	DB23699A	CC 10u 16V Z			
			R528	DB23699A	CC 10u 16V Z			
			R529	DB23699A	CC 10u 16V Z			
			R530	DB23699A	CC 10u 16V Z			
			R531	DB23699A	CC 10u 16V Z			
			R532	DB23699A	CC 10u 16V Z			
			R533	DB23699A	CC 10u 16V Z			
			R534	DB23699A	CC 10u 16V Z			
			R535	DB23699A	CC 10u 16V Z			
			R536	DB23699A	CC 10u 16V Z			
			R537	DB23699A	CC 10u 16V Z			
			R538	DB23699A	CC 10u 16V Z			
			R539	DB23699A	CC 10u 16V Z			
			R540	DB23699A	CC 10u 16V Z			
			R541	DB23699A	CC 10u 16V Z			
			R542	DB23699A	CC 10u 16V Z			
			R543	DB23699A	CC 10u 16V Z			
			R544	DB23699A	CC 10u 16V Z			
			R545	DB23699A	CC 10u 16V Z			
			R546	DB23699A	CC 10u 16V Z			
			R547	DB23699A	CC 10u 16V Z			
			R548	DB23699A	CC 10u 16V Z			
			R549	DB23699A	CC 10u 16V Z			
			R550	DB23699A	CC 10u 16V Z			
			R551	DB23699A	CC 10u 16V Z			
			R552	DB23699A	CC 10u 16V Z			
			R553	DB23699A	CC 10u 16V Z			
			R554	DB23699A	CC 10u 16V Z			
			R555	DB23699A	CC 10u 16V Z			
			R556	DB23699A	CC 10u 16V Z			
			R557	DB23699A	CC 10u 16V Z			
			R558	DB23699A	CC 10u 16V Z			
			R559	DB23699A	CC 10u 16V Z			
			R560	DB23699A	CC 10u 16V Z			
			R561	DB23699A	CC 10u 16V Z			
			R562	DB23699A	CC 10u 16V Z			
			R563	DB23699A	CC 10u 16V Z			
			R564	DB23699A	CC 10u 16V Z			
			R565	DB23699A	CC 10u 16V Z			
			R566	DB23699A	CC 10u 16V Z			
			R567	DB23699A	CC 10u 16V Z			
			R568	DB23699A	CC 10u 16V Z			

10. WIRING DIAGRAMS

- Notes: 1. Table of wire colors
 BRN — Brown
 RED — Red
 ORN — Orange
 YEL — Yellow
 GRN — Green
 BLU — Blue
 VIO — Violet
 GRY — Gray
 WHT — White
 BLK — Black
2. Component side view of the P.C.B. is illustrated unless otherwise specified.

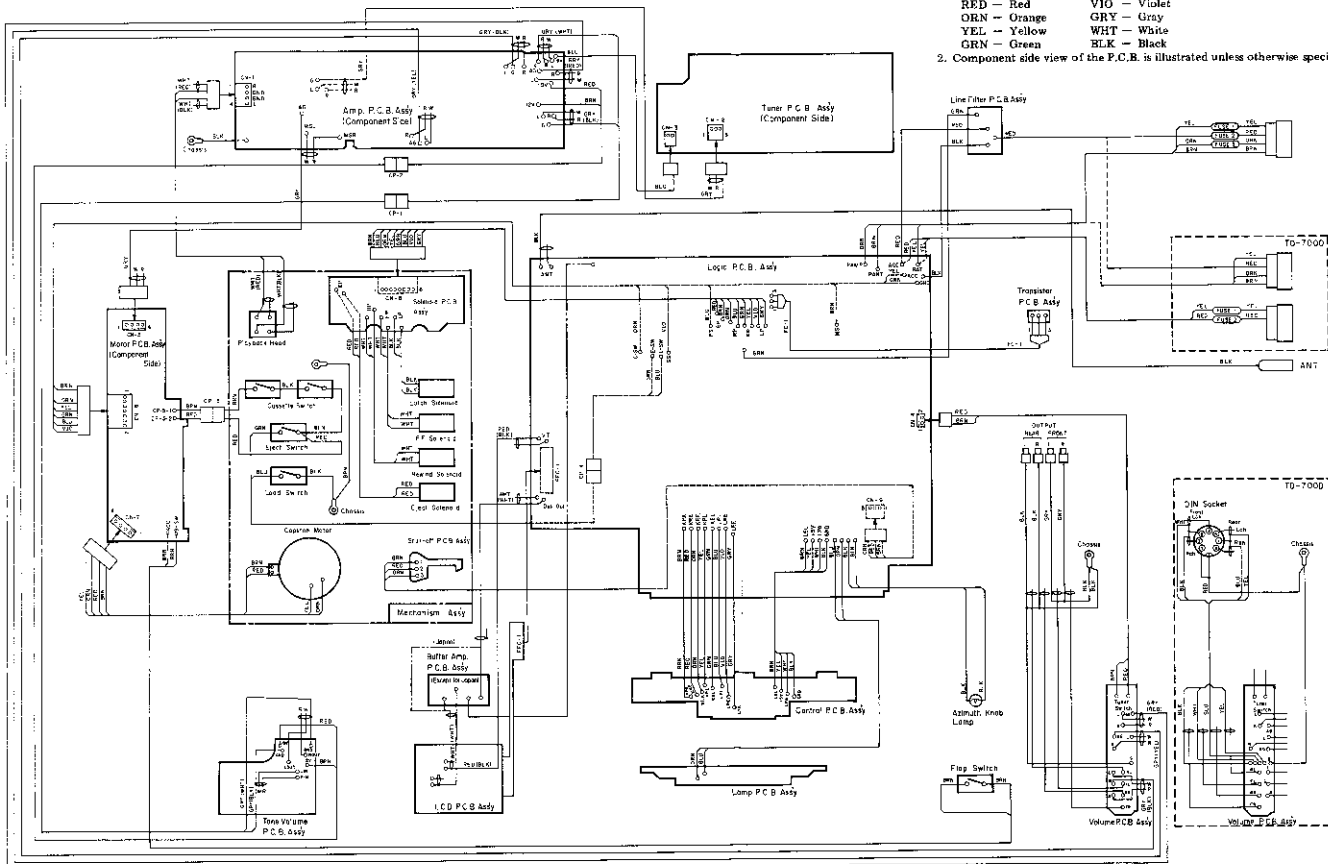


FIG. 10.1 C06303288 - (TD-700 & TD-700E)
 C06713301 - (TD-700D)

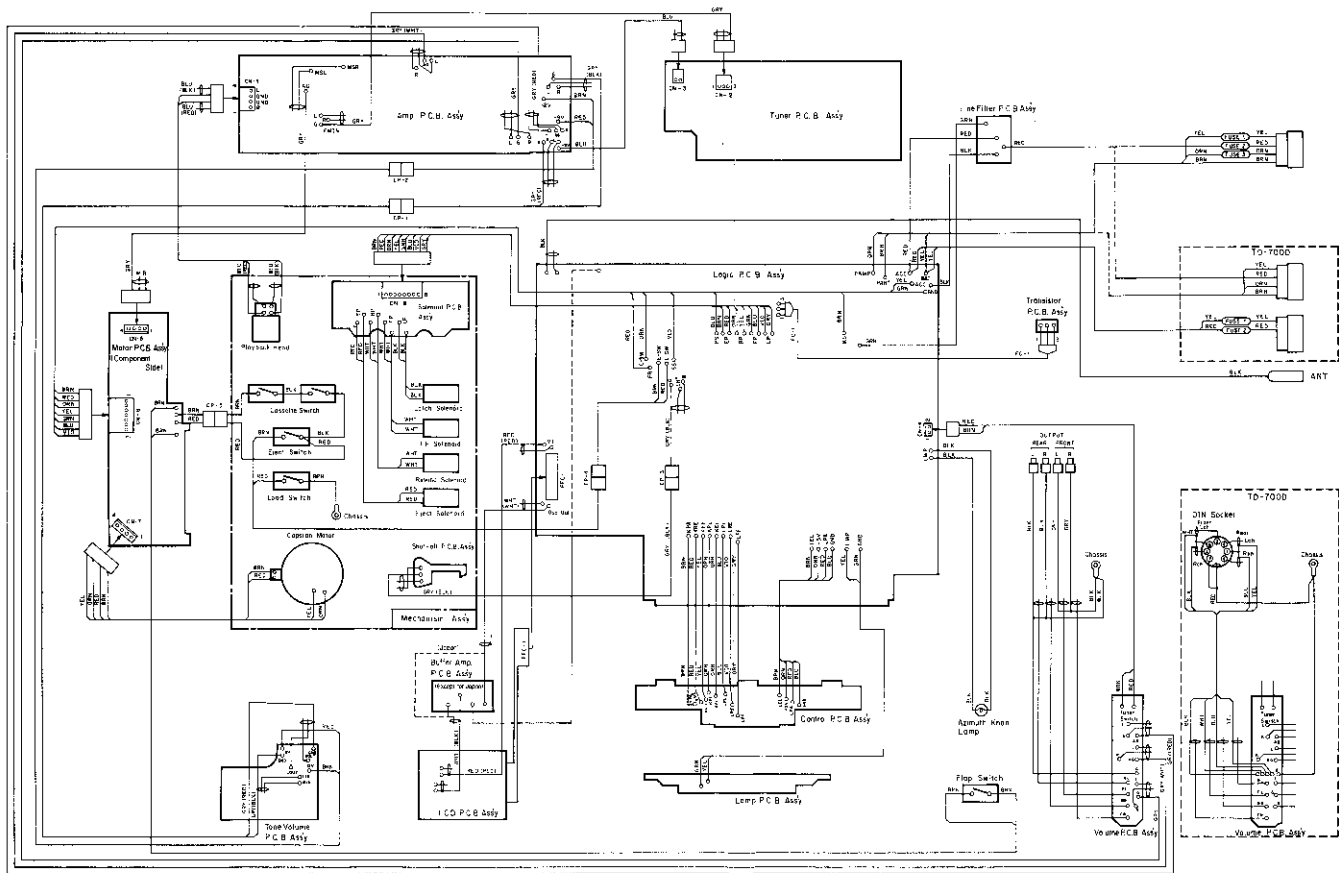
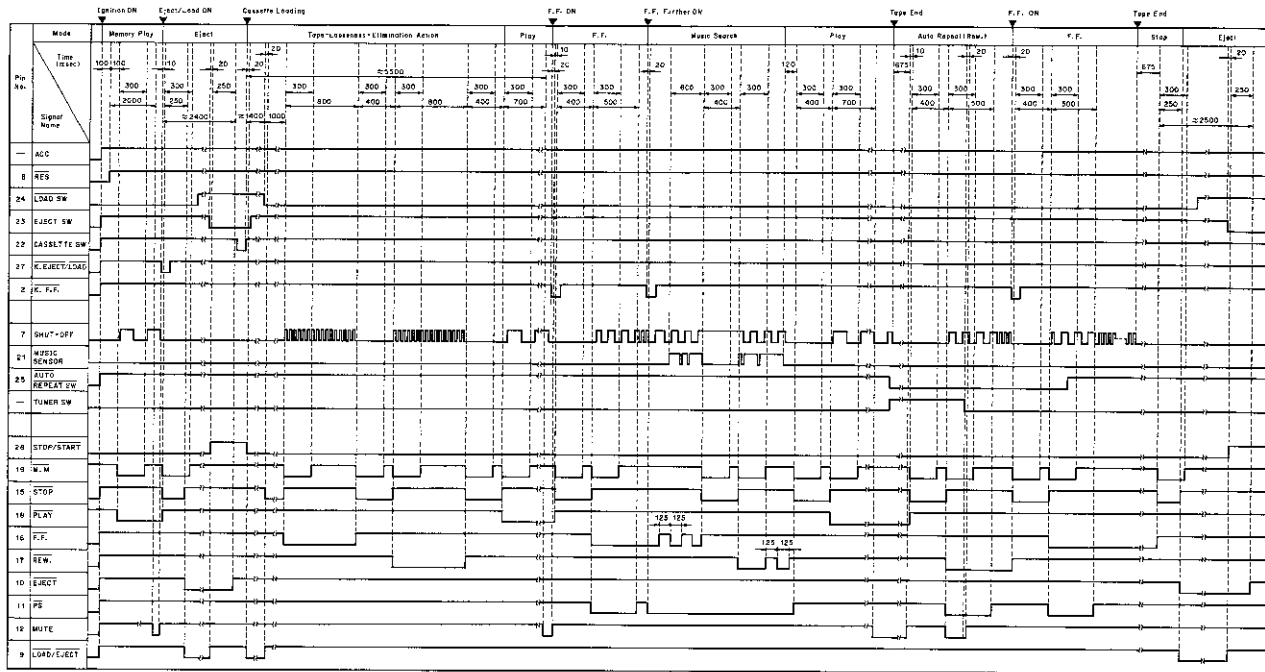


FIG. 10.2 C60501001 - 03298 (TD-700 & TD-700E)
C60701001 - 01300 (TD-700D)

11. TIMING CHART



Plc. 11

(2) Amplifier Section

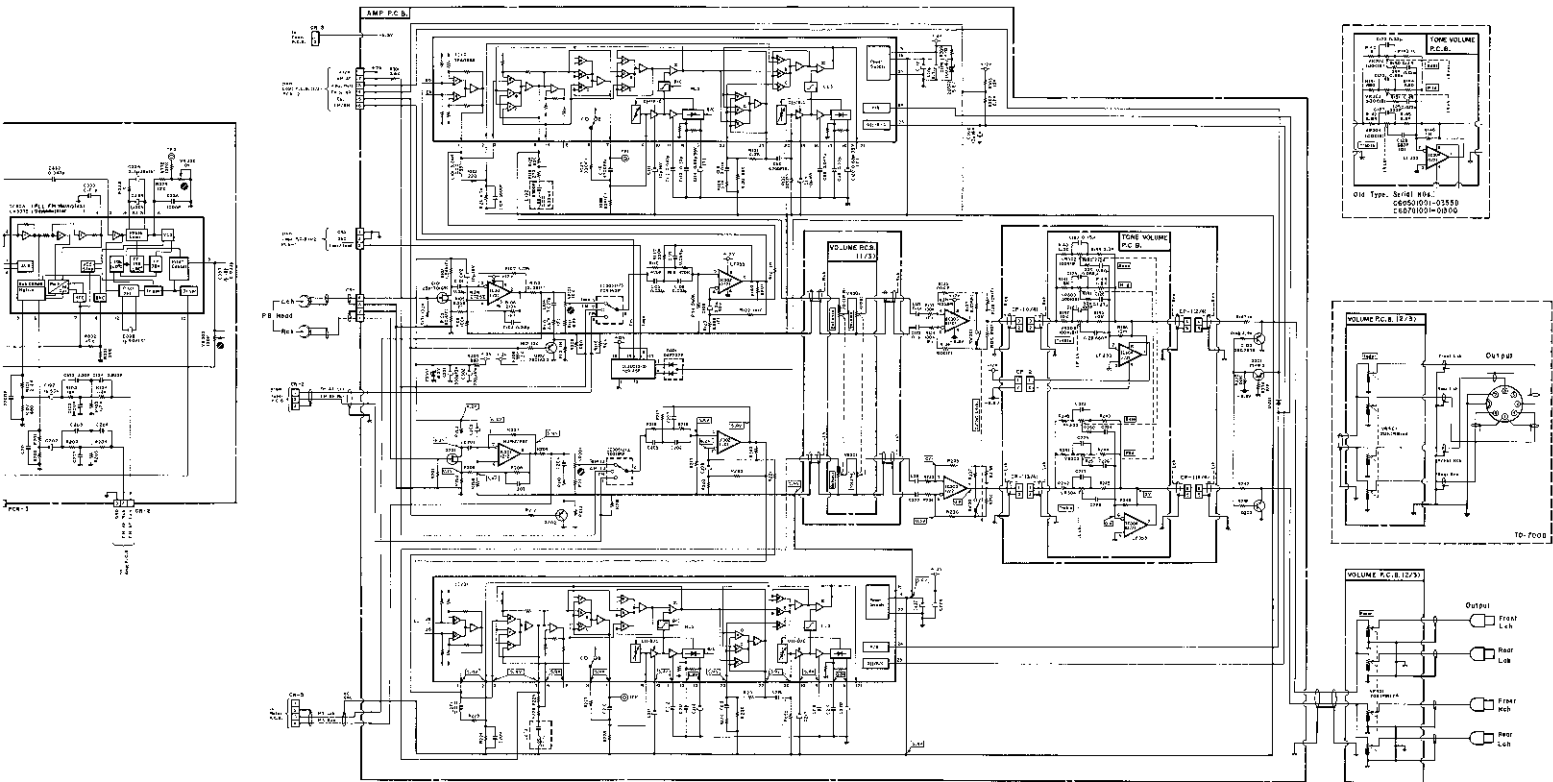
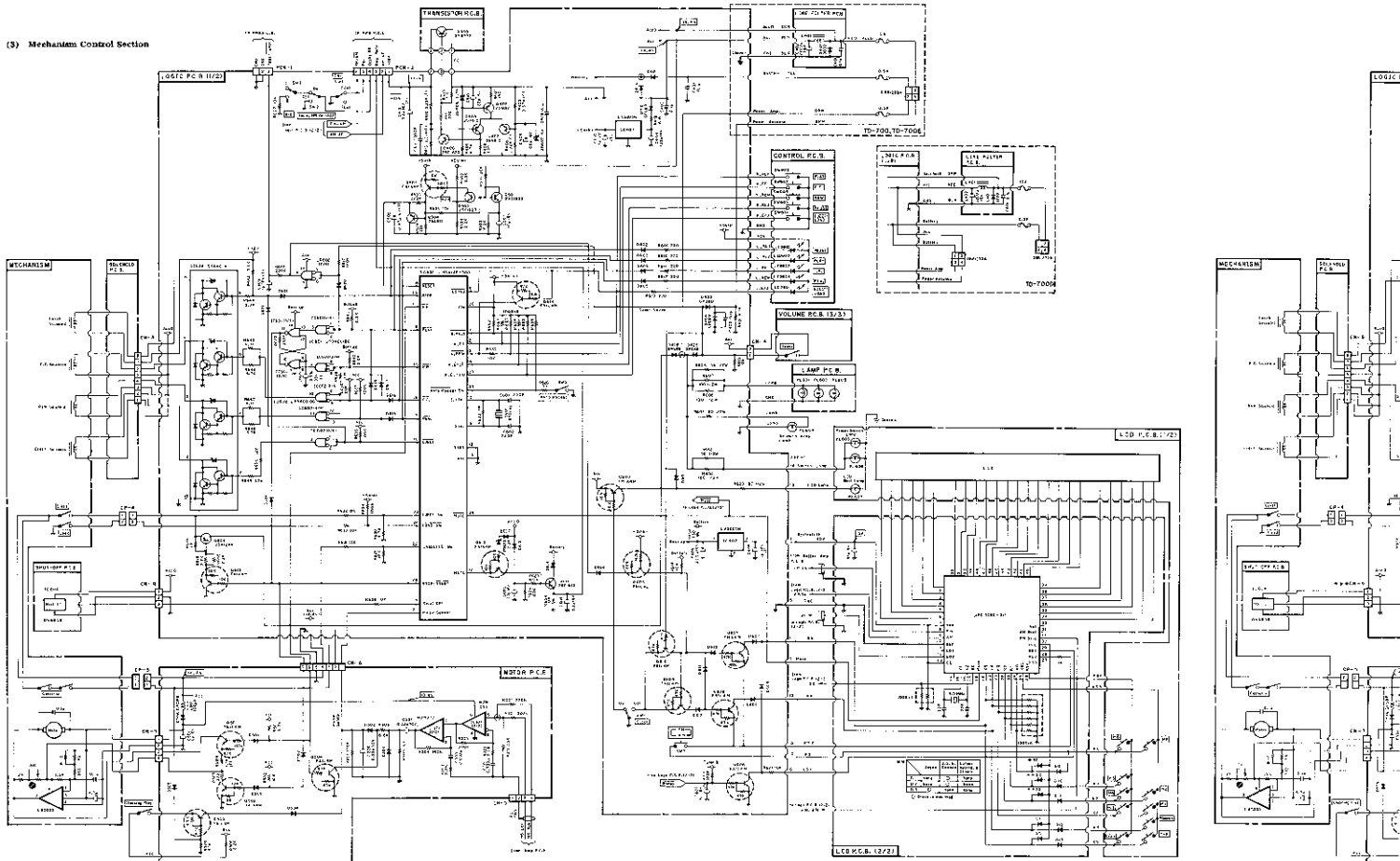


Fig. 9.2.2

otherwise specified.
25C/2785 are interchangeable with each other.

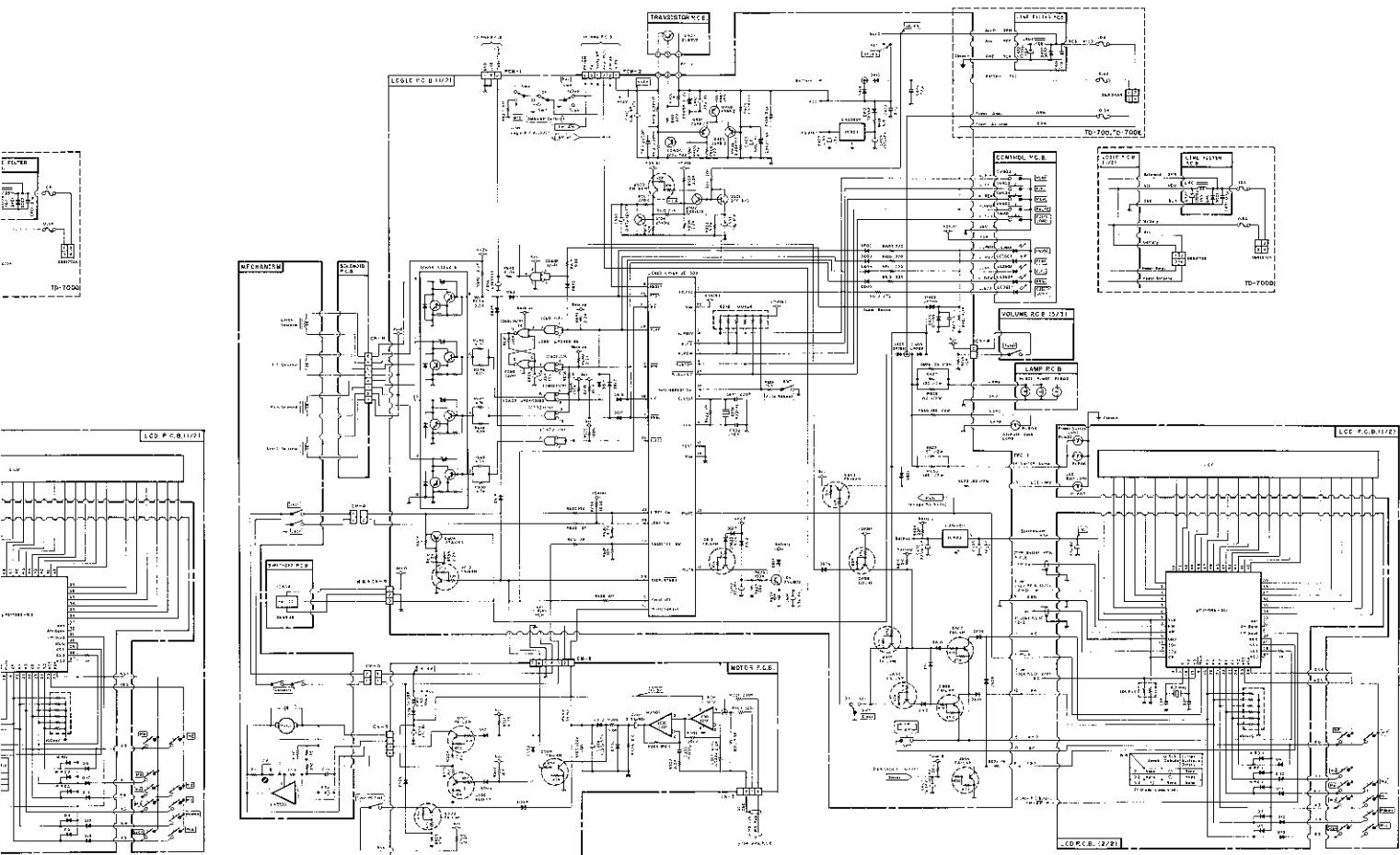
(3) Mechanism Control Section



Note: Diode is MA221 or RLS-73 unless otherwise specified.

FIG. 9.2.3.1 C60694101 (TD-700 & TD-700E)

***: 3P coupler (CP-3) is used for the Models be C60501001 - 03398 (TD-700 & TD-700E).



***: 3P coupler (CF-3) is used for the Models bearing the following serial Nos. instead of CN-9:
 C60501001 - 03898 (TD-700 & TD-700E) & C60701001 - 01250 (TD-700D)

Fig. 9.2.3.2 C60501001 - 04100 (TD-700 & TD-700E)
 C60701001 - (TD-700D)

13. SPECIFICATIONS

● Cassette Deck Section

Tape Speed	1-7/8 ips (4.8 cm/sec.)
Wow and Flutter	Less than 0.05% WTD RMS Less than $\pm 0.1\%$ WTD Peak
Frequency Response	20–21,000 Hz ± 3 dB (Nakamichi Test Tape)
Signal to Noise Ratio	Dolby C-Type NR On $< 70 \mu\text{s}$, ZX Tape $>$ Better than 70 dB (400 Hz, 3% THD, IHF A-WTD RMS) Dolby B-Type NR On $< 70 \mu\text{s}$, ZX Tape $>$ Better than 64 dB (400 Hz, 3% THD, IHF A-WTD RMS)
Channel Separation	Better than 34 dB (1 kHz, 0 dB)
Crosstalk	Better than 60 dB (1 kHz, 0 dB)
Winding Time (Fast Forward/Fast Reverse)	Approx. 75 sec. (with C-60 cassette)

● Tuner Section

—FM—

Frequency Range	87.5–107.9 MHz
Sensitivity	18 dBf (IHF)
50 dB Quieting Sensitivity	20 dBf (Mono)
Total Harmonic Distortion	0.15% (Mono 1 kHz) Input 65 dBf 0.3% (Stereo 1 kHz) Input 65 dBf
S/N Ratio	65 dB (Mono)
Frequency Response	30–15,000 Hz ± 3 dB
Alternate Channel Selectivity	65 dB (± 400 kHz)
Capture Ratio	2 dB
Image Rejection at 98 MHz	55 dB
IF Rejection at 98 MHz	80 dB
Stereo Separation	35 dB (1 kHz) at 65 dBf
Antenna Terminals	75 ohms (unbalanced)

—AM—

Frequency Range	530–1620 kHz
Sensitivity	33 dB μ

● Preamplifier Section

Frequency Response	10–50,000 Hz ± 1 dB
Output Level/Impedance	0.35 V (Low) or 1.1 V (High)/1 kohms
Total Harmonic Distortion	Less than 0.005%
Tone Control	
Bass	20 Hz ± 18 dB
Mid	200 Hz ± 10 dB
Treble	20 kHz ± 12 dB

Dimensions	178 (W) x 50 (H) x 165 (D) mm 7 (W) x 2 (H) x 6-1/2 (D) inches
------------	---

Approximate Weight	1.9 kg/4 lb, 3 oz.
Power Source	14.4 V DC negative ground (10.8–15.6 V allowable)
Power Consumption	6.5 A Maximum

- Specifications and appearance design are subject to change for further improvement without notice.
- Noise Reduction System manufactured under license from Dolby Laboratories Licensing Corporation.
- The word "DOLBY" and the Double-D-Symbol are trademarks of Dolby Laboratories Licensing Corporation.