



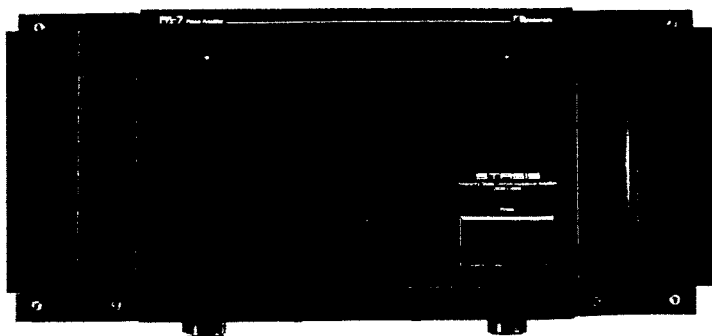
# Service Manual

# Nakamichi

# PA-7

# PA-7E

## Power Amplifier



## CONTENTS

1. General	1
2. Parts Location for Electrical Adjustment	2
3. Electrical Adjustments	2
3. 1. Preparation for Adjustment	2
3. 2. DC Balance Adjustment	2
3. 3. Idling Current Adjustment	2
4. Mechanism Ass'y and Parts List	3
4. 1. Synthesis	4
4. 2. Handle L Ass'y (A01)	4
4. 3. Handle R Ass'y (A02)	4
4. 4. Front Panel Ass'y (A03)	4
4. 5. Rear Panel Ass'y (A04)	5
5. Mounting Diagrams and Parts List	5
5. 1. Clipping LED P.C.B. Ass'y	5
5. 2. Power LED P.C.B. Ass'y	5
5. 3. Limiter P.C.B. Ass'y	5
5. 4. Amp. L P.C.B. Ass'y	6
5. 5. Amp. R P.C.B. Ass'y	7
5. 6. Protector L P.C.B. Ass'y	7
5. 7. Protector R P.C.B. Ass'y	7
6. Schematic Diagram	8
7. Wiring Diagram	9
8. Block Diagram	9
9. Specifications	10

## 1. GENERAL

### 1.1. Voltage Selector

Voltage selector is installed on the rear panel for Other version of the Nakamichi PA-7. This voltage selector can select 110 V, 120 V, 220 V or 240 V at customer's disposal.

### 1.2. Packing Materials, Owner's Manual and Power Cord

<u>Part No.</u>	<u>Description</u>	<u>Q'ty</u>
0F03875B	Outer Carton PA-7	1
0F03876C	Outer Carton PA-7E	1
0F03869B	Inner Carton PA-7	1
0F03870B	Inner Carton PA-7E	1
0F03877B	Packing	2
0D04531A	Owner's Manual English	1
0D04530A	Owner's Manual English/German/French	1
0B90137A	Power Cord PA-7 (U.S.A. & Others)	1
0B90139A	Power Cord PA-7 (Australia)	1
0B90138A	Power Cord PA-7E (220V Class 2)	1
0B90154A	Power Cord PA-7E (Switzerland)	1
0B90140A	Power Cord PA-7E (UK)	1
0F03887A	Power Cord Band	1

4. MECHANISM ASS'Y AND PARTS LIST

Schematic Ref. No.	Part No.	Description	Q'ty	Schematic Ref. No.	Part No.	Description	Q'ty
		Synthesis Serial No.: B20601001 —		A01	HA04832A	Handle L Ass'y Serial No.: B20601001 —	1
01	HA04832A	Handle L Ass'y	1	01	0H04631A	Handle L	1
02	HA04846A	Front Panel Ass'y PA-7	1	02	OJ05006A	Vinyl Chloride Plate A	2
	HA04847A	Front Panel Ass'y PA-7E	1	03	0H04655A	Vinyl Chloride Plate B	1
03	BA05688A	Clipping LED P.C.B. Ass'y	2	L01	0E03310A	M4x6 ⊕ Binding (Black Chromate)	2
04	BA05687A	Power LED P.C.B. Ass'y	1				
05	HA04833A	Handle R Ass'y	1	A02	HA04833A	Handle R Ass'y Serial No.: B20601001 —	1
06	OJ04989B	Front Chassis	1				
07	0B71003A	Power Switch	1	01	0H04632A	Handle R	1
08	OJ05048A	P.C.B. Spacer	4	02	OJ05006A	Vinyl Chloride Plate A	2
09	BA05754B	Limiting P.C.B. Ass'y PA-7 (U.S.A.)	1	03	0H04655A	Vinyl Chloride Plate B	1
	BA05755B	Limiting P.C.B. Ass'y PA-7 (Australia & Others) & PA-7E	1	L01	0E03310A	M4x6 ⊕ Binding (Black Chromate)	2
10	0H04634D	Heat Sink B	1	A03	HA04846A	Front Panel Ass'y PA-7	1
11	0H04633D	Heat Sink A	1		HA04847A	Front Panel Ass'y PA-7E Serial No.: B20601001 —	1
12	OJ04990A	Side Chassis	2				
13	OJ05025A	Stud	2	01	0H04618B	Front Panel PA-7	1
14	BA05684B	Amp. L P.C.B. Ass'y	1		0H04619B	Front Panel PA-7E	1
15	0M04377B	Caution Label	1	02	HA04849A	Power Switch Button Ass'y	1
16	0H04629B	Top Cover	1	03	OJ05000B	Spring	1
17	OJ05011A	Cushion A	6	04	0H04652B	Guide	1
18	OJ05055A	Cushion B	1	05	0H04653B	Illuminator	1
19	0B12253A	Diode Bridge 15G4B41	2	06	0H04651A	Lens	2
20	OJ05047B	Ground Plate Collar	1	07	OJ05005A	P.C.B. Cushion	2
21	OJ04992C	Ground Plate	1				
22	OJ05003A	Center Stud	1				
23	0B40328A	Electrolytic Capacitor 33000μF 100V	4				
24	0B50046B	Power Transformer 120V PA-7 (U.S.A.)	1				
	0B50048B	Power Transformer 220/240V PA-7 (Australia) & PA-7E	1				
	0B50049A	Power Transformer 120/220-240V PA-7 (Others)	1				
25	0H04650A	Bottom Chassis	1				
26	OJ05009A	Leg T-D	4				
27	HA04845A	Rear Panel Ass'y PA-7 (U.S.A.)	1				
	HA04843A	Rear Panel Ass'y PA-7 (Australia)	1				
	HA04842A	Rear Panel Ass'y PA-7 (Others)	1				
	HA04844A	Rear Panel Ass'y PA-7E	1				
28	BA05685B	Amp. R P.C.B. Ass'y	1				
29	0H04671C	Heat Sink D	1				
30	0H04635D	Heat Sink C	1				
31	0B08515A	Insu-Lock	20				
32	BA05980A	Protector L P.C.B. Ass'y	1				
33	BA05981A	Protector R P.C.B. Ass'y	1				
L01	0E00745A	Bolt M4x10 Hex. Socket Head (Black Chromate)	8				
L02	0E00985A	M3x6 ⊕ Binding (Black Chromate)	16				
L03	0E03283A	ST 3x6 ⊕ Binding (Black Chromate)	7				
L04	0E03220A	ST 3x5 ⊕ Countersunk	2				
L05	0E00857A	BT 3x6 ⊕ Binding	2				
L06	0E03298A	ST 4x14 ⊕ Binding (Black Chromate)	18				
L07	0E03289A	M4x12 ⊕ Binding (Bronze)	8				
L08	0E03030A	M3x6 ⊕ Binding (Nickel)	2				
L09	0E00713A	M3x6 ⊕ Truss (Bronze)	9				
L10	0E03290A	M4x15 ⊕ Binding (Bronze)	2				
L11	0E03299A	Nut Hex. M4	1				
L12	0E03287A	M4x6 ⊕ Binding (Gold)	8				
L13	0E03296A	M4x4 ⊕ Binding (Black Chromate)	12				
L14	0E00907A	ST 4x8 ⊕ Binding (Black Chromate)	8				
L15	0E03286B	Washer 6mm (Black Chromate)	4				
L16	0E03291A	Nut Hex. M6 (Black Chromate)	4				
L17	0E00972A	Nut Hex. M3 (Nickel)	2				
L18	0E00594A	M3x8 ⊕ Binding (Bronze)	2				
L19	0E03034A	M4x8 ⊕ Binding (Nickel)	3				
L20	OJ05063A	Fiber Washer 0.5T	8				

## 2. PARTS LOCATION FOR ELECTRICAL ADJUSTMENT

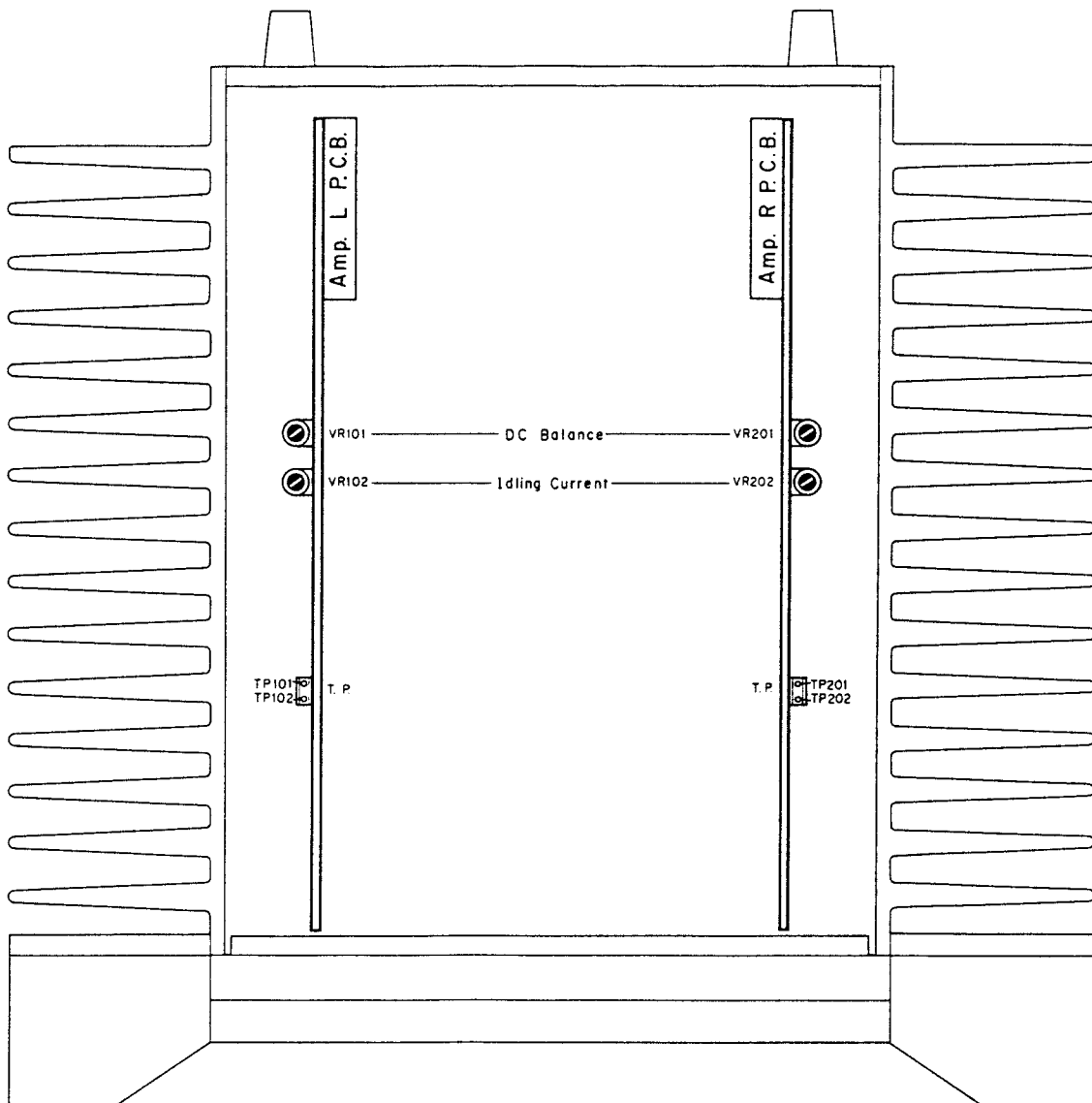


Fig. 2

## 3. ELECTRICAL ADJUSTMENTS

### 3.1. Preparation for Adjustment

- (1) Insert shorting pins into the Input Jacks.
- (2) Remove loads of the speaker terminals.
- (3) Before starting adjustment, allow twenty minutes or more after the power is turned ON.

### 3.2. DC Balance Adjustment

- (1) Connect a DC voltmeter to the L (R) channel speaker terminal.
- (2) Adjust VR101 (VR201) to obtain  $0 \pm 100$  mV on the DC voltmeter.

### 3.3. Idling Current Adjustment

- (1) Connect a DC voltmeter between TP101 and TP102 (TP201 and TP202) on the Amp. L (R) P.C.B. Ass'y.
- (2) Adjust VR102 (VR202) to obtain 40 mV on the DC voltmeter (idling current: 40 mA).
- (3) Repeat 3.2 and 3.3 one or two times.
- (4) Remove shorting pins from the Input Jacks.

4.1. Synthesis

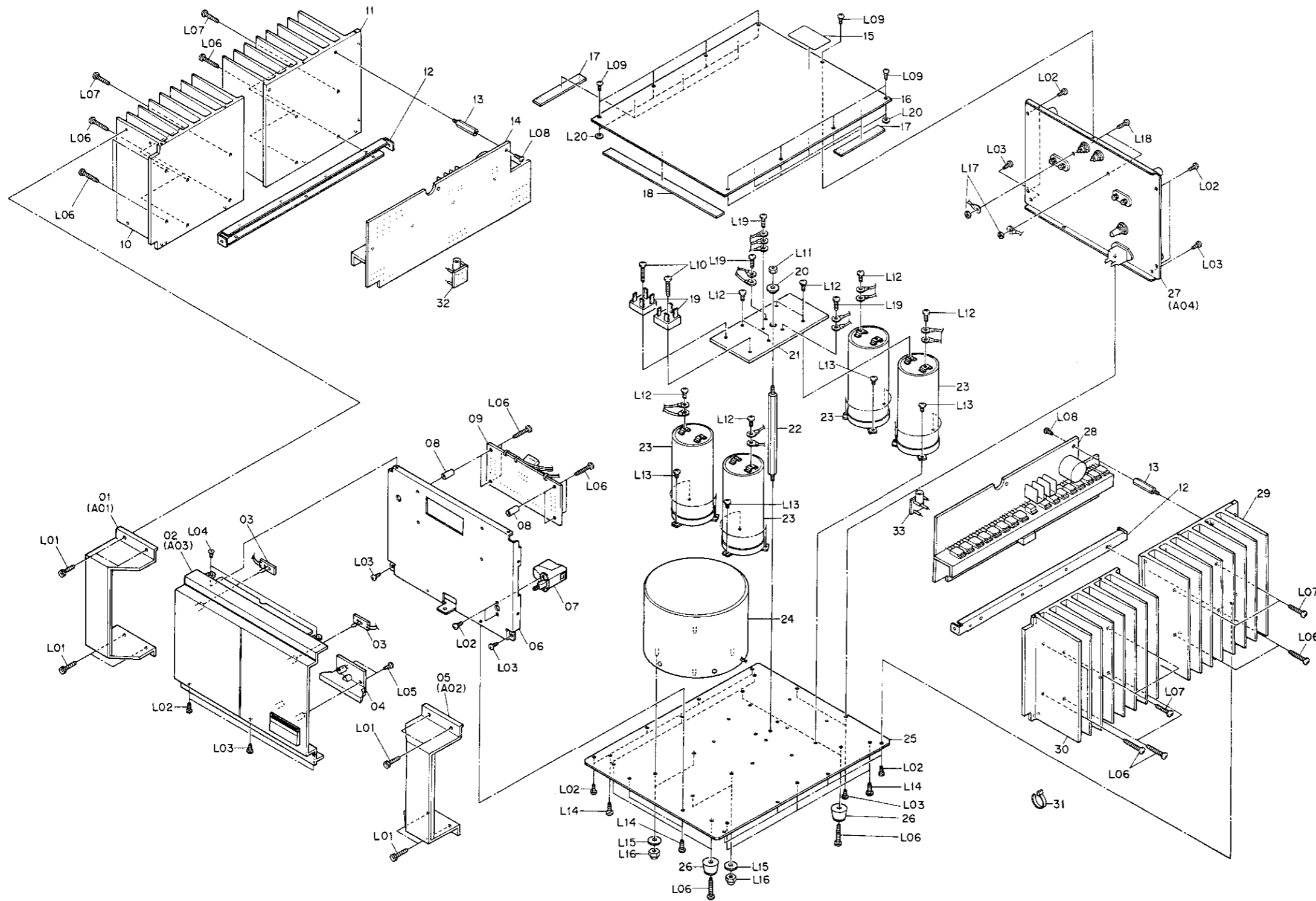


Fig. 4.1

4.2. Handle L Ass'y (A01)

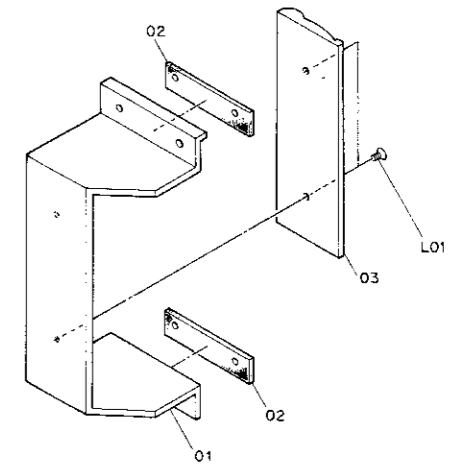


Fig. 4.2

4.3. Handle R Ass'y (A02)

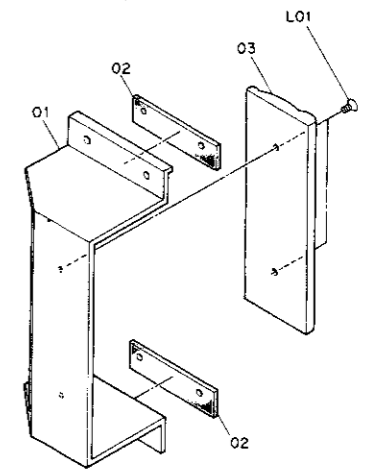


Fig. 4.3

4.4. Front Panel Ass'y (A03)

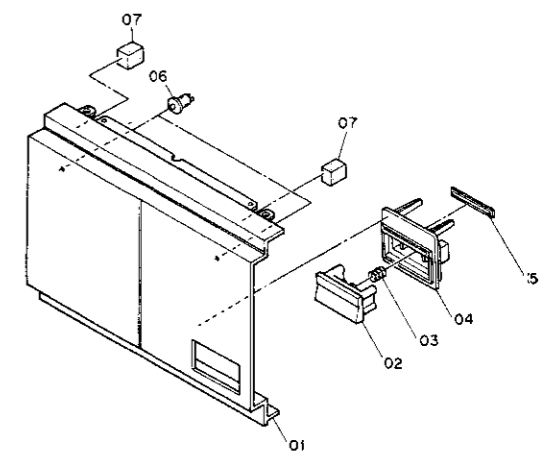


Fig. 4.4

4.5. Rear Panel Ass'y (A04)

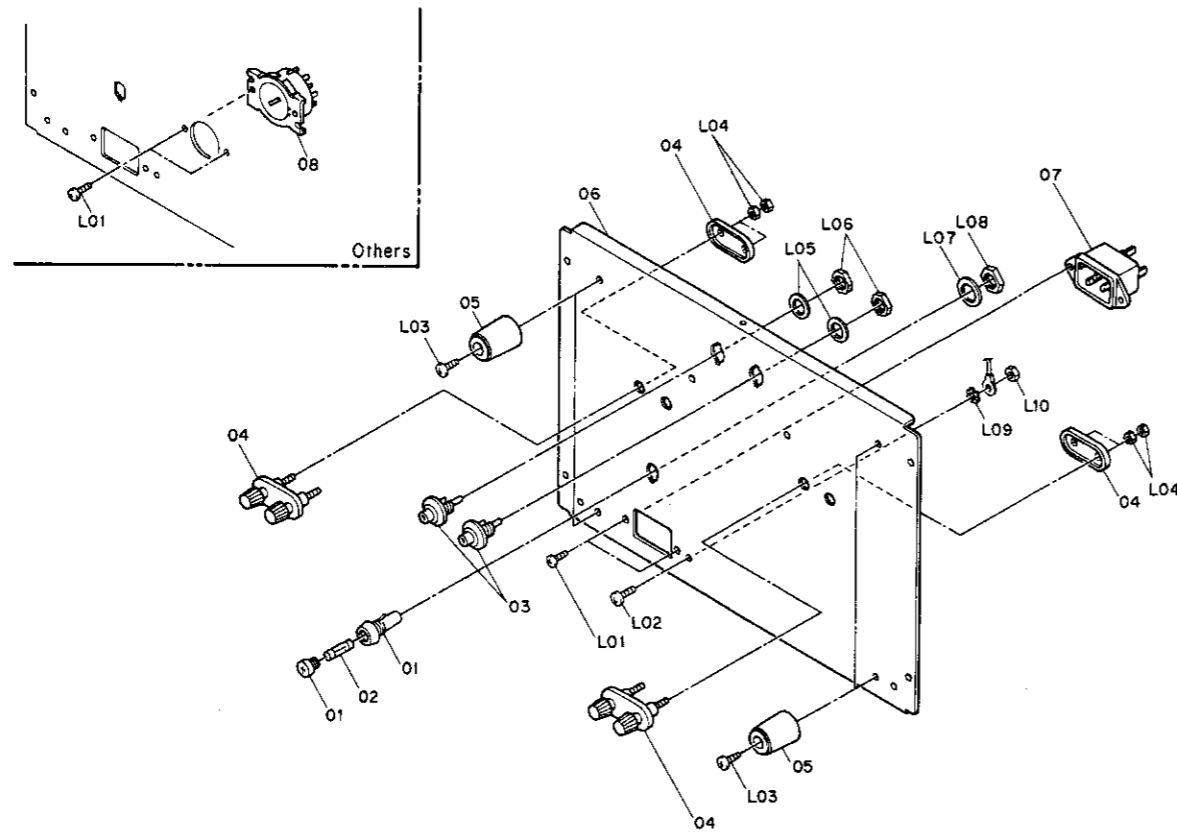


Fig. 4.5

Schematic Ref. No.	Part No.	Description	Qty
A04	HA04845A	Rear Panel Ass'y PA-7 (U.S.A.)	1
	HA04843A	Rear Panel Ass'y PA-7 (Australia)	1
	HA04842A	Rear Panel Ass'y PA-7 (Others)	1
	HA04844A	Rear Panel Ass'y PA-7E Serial No.: B20601001 -	1
01	0B90093A	Fuse Holder PA-7 (U.S.A. & Others)	1
	0B90094A	Fuse Holder PA-7 (Australia) & PA-7E	1
02	0B90118A	Fuse 10A PA-7 (U.S.A. & Others)	1
	0B90120A	Fuse T5A PA-7 (Australia) & PA-7E	1
03	0B81364A	Pin Jack	2
04	0B81365A	Speaker Terminal	2
05	0J05029A	Leg T-A	4
06	0H04624D	Rear Panel PA-7 (U.S.A. & Australia)	1
	0H04660D	Rear Panel PA-7 (Others)	1
	0H04625D	Rear Panel PA-7E	1
07	0B90092A	AC Inlet PA-7 (U.S.A.)	1
	0B90087A	AC Inlet PA-7 (Australia & Others) & PA-7E	1
08	0B70049A	Voltage Selector PA-7 (Others)	1
L01	0E00818A	M3x8 @ Binding (Black Chromate)	2
L02	0E03058A	M4x8 @ Binding (Black Chromate)	1
L03	0E03313A	BT 4x8 @ Pan (Black Chromate)	4
L04	-	Speaker Terminal Nut	4
L05	-	Pin Jack Nut	2
L06	-	Pin Jack Washer	2
L07	-	Pin Jack Nut	2
L08	-	Fuse Holder Washer	1
L09	-	Fuse Holder Nut	1
L10	0E00078A	Washer 4mm Toothed Lock	1
	0E00506A	Nut Hex. M4	1

5. MOUNTING DIAGRAMS AND PARTS LIST

- Notes: 1. Mounting diagram shows a dip side view of the printed circuit board.  
 2. Diode is 1SS53, 1S1555, or 1SS176 unless otherwise specified.  
 3. Abbreviation for part name:  
 TR - Transistor, SiD - Silicon Diode, ZD - Zener Diode  
 RK - Carbon Resistor, RM - Metal Film Resistor, RF - Fail Safe Type Resistor, RC - Cement Resistor  
 CE - Electrolytic Capacitor, CM - Mylar Capacitor, CC - Ceramic Capacitor, CP - PP Capacitor,  
 CT - Tantalum Capacitor, CF - Film Capacitor, C - Mica Capacitor

5.1. Clipping LED P.C.B. Ass'y

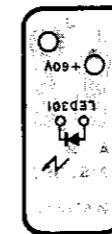


Fig. 5.1

5.2. Power LED P.C.B. Ass'y

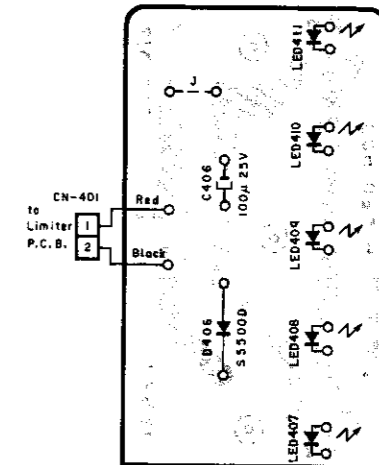


Fig. 5.2

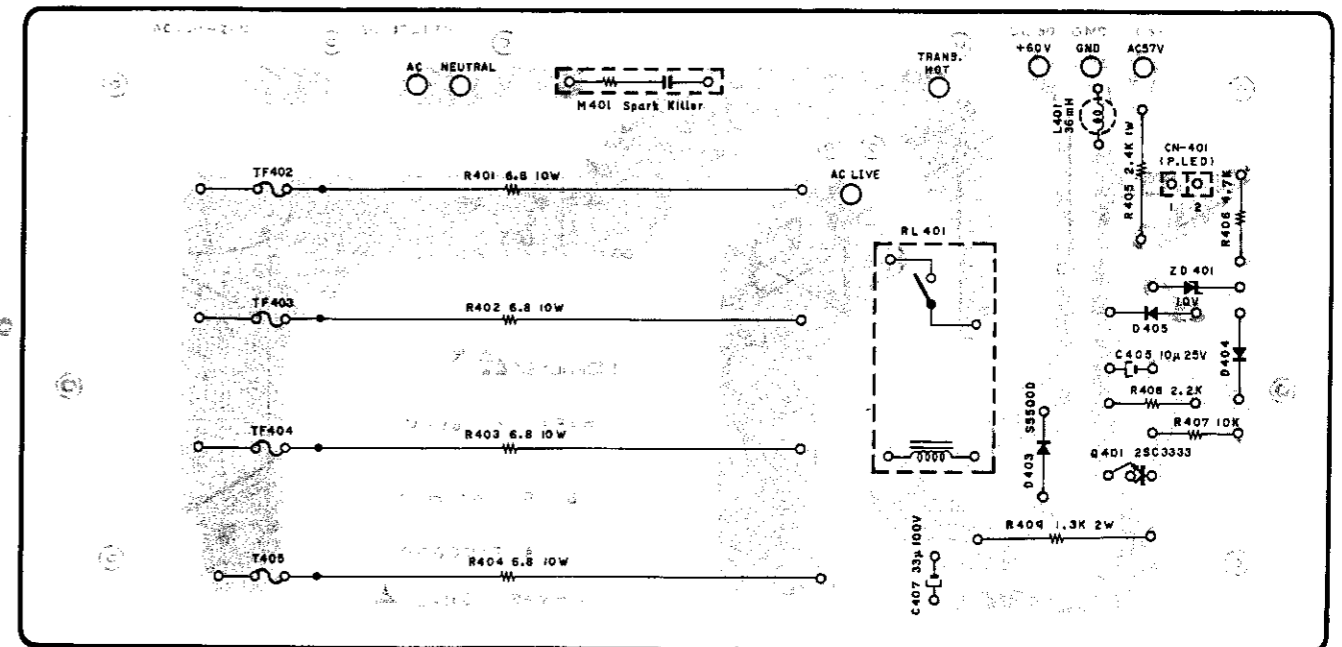


Fig. 5.3

5.4. Amp. L P.C.B. Ass'y

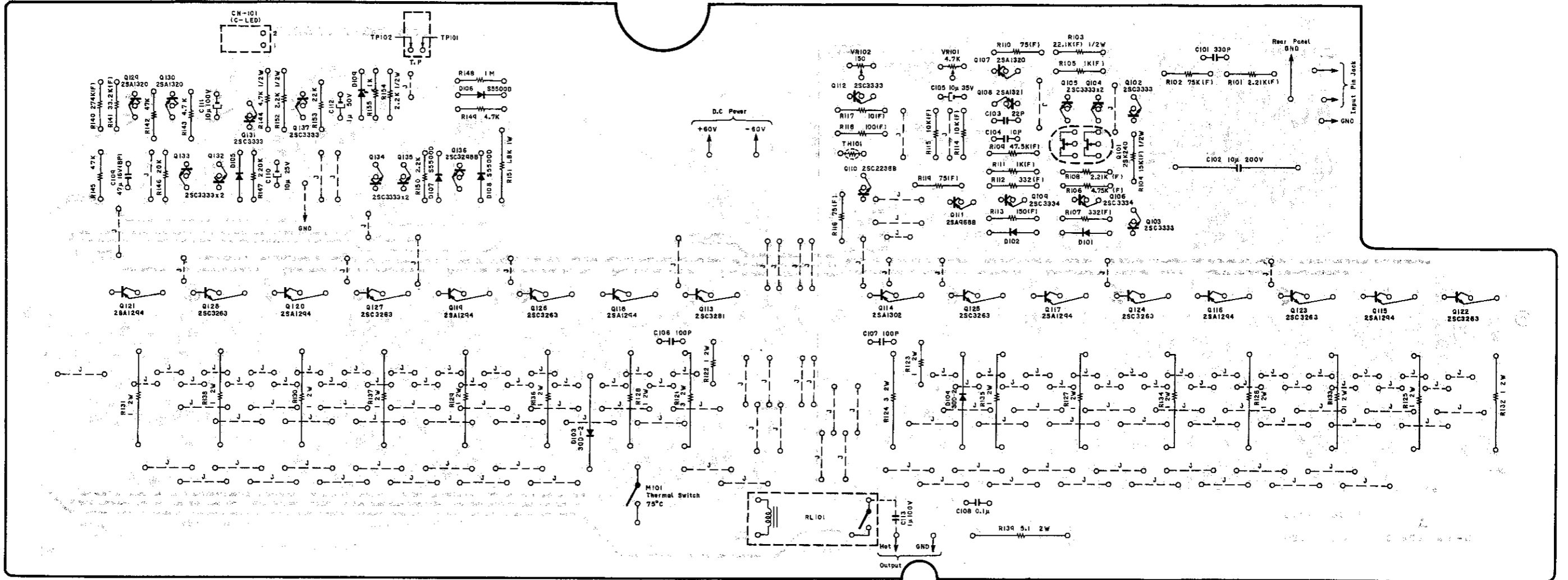


Fig. 5.4

Schematic Ref. No.	Part No.	Description	Schematic Ref. No.	Part No.	Description	Schematic Ref. No.	Part No.	Description	Schematic Ref. No.	Part No.	Description	Schematic Ref. No.	Part No.	Description
LED301	BA05688A	Clipping LED P.C.B. Ass'y	Q401 ZD401 D403 D404,405 L401 R401-404 R405 R406 R407 R408 R409 C405 C407 RL401 M401	BA05754B	Limiter P.C.B. Ass'y PA-7 (U.S.A. & Canada)	Q101 Q102-105 112,131 132,133 134,135 137	BA05684B	Amp. L P.C.B. Ass'y	R105,111	OB09491A	RM 1K 1/4W F	C103	OB41539A	C 22P 50V J
	OB60214A	Clipping LED P.C.B.		BA05755B	Limiter P.C.B. Ass'y PA-7 (Australia & Others) & PA-7E		OB60215A	Amp. L P.C.B.	R106	OB09424A	RM 4.75K 1/4W F	C104	OB41538A	C 10P 50V J
	OB12260B	LED Red					OB06257A	FET 2SK240	R107,112	OB09760A	RM 332 1/4W F	C106	OB40336A	CE 10μ 35V
	OB82418A	LED Cord (1)					OB10103A	TR 2SC3333 (11)	R109	OB22638A	RM 47.5K 1/4W F	C106,107	OB41540A	C 100P 100V J
LED407 408,409 410,411 D406 C406	BA05687A	Power LED P.C.B. Ass'y		OB60217A	Limiter P.C.B.	Q106,109	OB10143A	TR 2SC3334	R110,116	OB22632A	RM 75 1/4W F	C108	OB41537A	CM 0.1μ 100V J
	OB60213A	Power LED P.C.B.		OB10103A	TR 2SC3333	Q107,129	OB10102A	TR 2SA1320	R113	OB22633A	RM 150 1/4W F	C109	OB40331A	CE 47μ 16V (BP)
	OB12251A	LED Green		OB10101A	TR 2SC2238B	130	OB10101A	TR 2SC2238B	R114,115	OB09203A	RM 10K 1/4W F	C110	OB01674A	CE 10μ 25V
	OB12252A	SiD S5500D		OB24065A	RF 6.8 10W	Q108	OB10142A	TR 2SC1321	R117	OB22666A	RM 10 1/4W F	C111	OB40330A	CE 10μ 100V
	OB01272A	CE 100μ 25V		OB24074A	RF 2.4K 1W J	Q111	OB10101A	TR 2SA968B	R118	OB22567A	RM 100 1/4W F	C112	OB01405A	CE 1μ 50V
	OB82493A	P-LED Cord		OB01846A	RK 4.7K 1/4W J	Q113	OB10130A	TR 2SC3281	R121,124	OB24058A	RF 3 2W J	C113	OB41619A	CE 1μ 100V
	OB00857A	BT 3x6 @ Binding (1)		OB01888A	RK 10K 1/4W J	Q114	OB10129A	TR 2SA1302	R122,123	OB24064A	RC 1 2W	TH101	OB19008A	Thermistor 102F
	OJ04998A	Power Reflector (1)		OB05622A	RK 2.2K 1/4W J	Q115-121	OB10098A	TR 2SA1294	R125-138	OB24064A	RC 1 2W	M101	OB90084A	Thermal Switch 75°C
	OJ05010C	Sheet (1)		OB01674A	CE 10μ 25V	Q122-128	OB10099A	TR 2SC3263 (7)	R139	OB24059A	RF 5.1 2W J	RL101	OB90083A	Relay 10A 250V AC
				OB40341A	CE 33μ 100V	D101,102	OB10145A	TR 2SC3298B	R140	OB05641A	RK 47K 1/4W J		OB81366A	2P-S Post (2)
				OB90088A	Limiter Relay (1)	105,109	OB06181A	SiD 1SS53	R141	OB09446A	RM 33.2K 1/4W F		OB82412C	DC Cord (R) (1)
				OB08342A	Spark Killer PA-7 (U.S.A. & Canada) (1)	D103,104 D106,107 108	OB06458A	SiD 30D-2	R142,145	OB05641A	RK 47K 1/4W J		OB82413C	DC Cord (BL) (1)
			OB08445A	Spark Killer PA-7 (Australia & Others) & PA-7E (1)	VR101 VR102 R101,108	OB12252A	SiD S5500D	R143,149	OB01846A	RK 4.7K 1/4W J		OB82414A	G-Prot. Cord (1)	
			OB08715A	Thermal Fuse 129	R102	OB32043A	Semi-fixed VR 4.7K	R144	OB24062A	RF 4.7K 1/2W J		OB82415C	G-Input Cord (1)	
			OB81366A	2P-S Post (1)	R103	OB32052A	Semi-fixed VR 150	R146	OB09509A	RK 20K 1/4W J		OB82419C	SP Out R Cord (1)	
			OB82423B	Limiter Cord (1)	R104	OB09547A	RM 2.21K 1/4W F	R147	OB05625A	RK 220K 1/4W J		OB82420D	SP Out B Cord (1)	
						OB09562A	RM 75K 1/4W F	R148	OB05776A	RK 1M 1/4W J		OB82480B	Input Cord (1)	
						OB22672A	RM 22.1K 1/2W F	R149	OB05622A	RK 2.2K 1/4W J		OE00754A	M3x8 @ Pan. (20)	
						OB22671A	RM 15K 1/2W F	R150	OB24060A	RF 1.8K 1W J		OE00966A	M3x5 @ Binding (2)	
								R151	OB05615A	RK 22K 1/4W J		OB08680B	Heat Sink A (2)	
								R152	OB24073A	RF 2.2K 1/2W J		OE00972A	Nut Hex. M3 (2)	
								R153	OB05615A	RK 22K 1/4W J		OB90082A	TR Mica (2)	
								R154	OB24073A	RF 2.2K 1/2W J		OB90075B	P.C.B. Stand (1)	
								R155	OB01857A	RK 1K 1/4W J				
								C101	OB41541A	C 330P 100V J				
								C102	OB41536A	CM 10μ 200V K				

5.5. Amp. R P.C.B. Ass'y

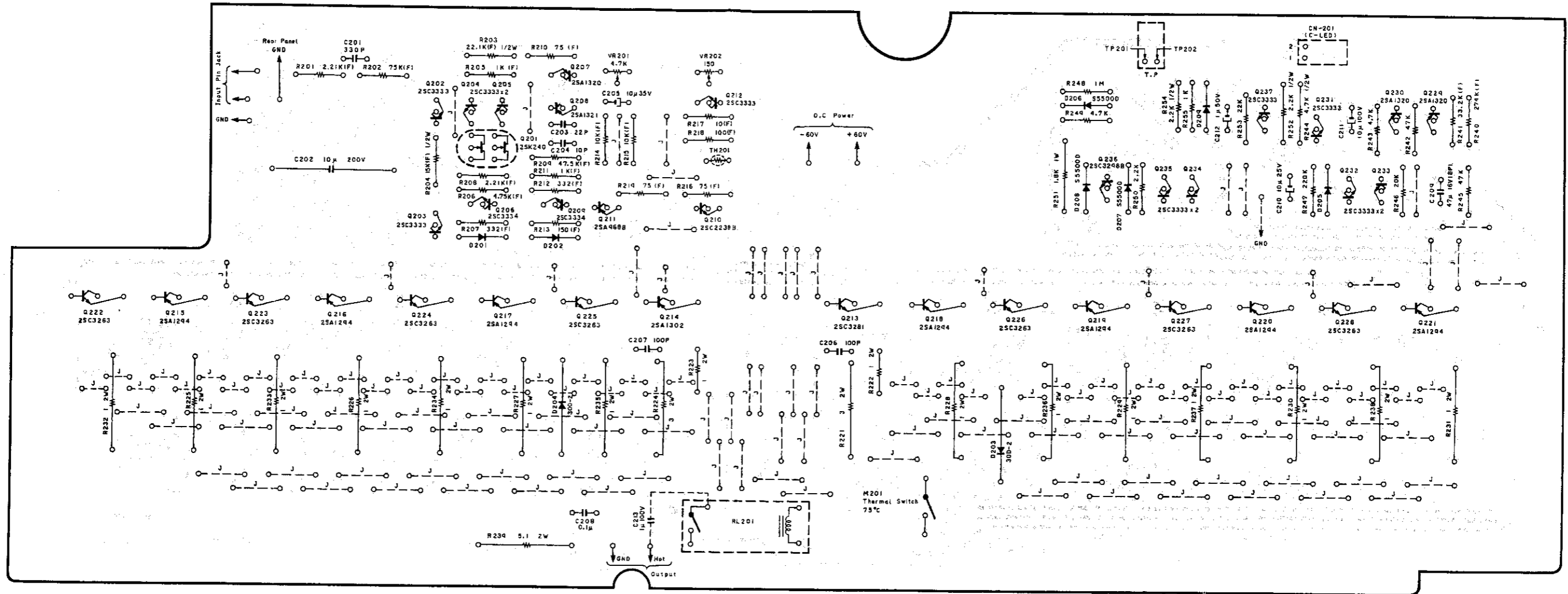


Fig. 5.5

Schematic Ref. No.	Part No.	Description	Schematic Ref. No.	Part No.	Description	Schematic Ref. No.	Part No.	Description	Schematic Ref. No.	Part No.	Description
	BA05685B	Amp. R P.C.B. Ass'y	R205,211	OB09491A	RM 1K 1/4W F	C203	OB41539A	C 22P 50V J		BA05980A	Protector L P.C.B. Ass'y
Q201	OB60216A	Amp. R P.C.B. FET 2SK240	R206	OB09424A	RM 4.75K 1/4W F	C204	OB41538A	C 10P 50V J			
Q202-205	OB06257A	TR 2SC3333 (11)	R207,212	OB09760A	RM 332 1/4W F	C205	OB40336A	CE 10µ 35V	Q138,139	OB60308A	Protector L P.C.B. Ass'y
212,231	OB10103A		R209	OB22638A	RM 47.5K 1/4W F	C206,207	OB41540A	C 100P 100V J	D110	OB10102A	TR 2SA1320
232,233			R210,216	OB22632A	RM 75 1/4W F	C208	OB41537A	CM 0.1µ 100V J	R156	OB06181A	SID 1SS53
234,235			219			C209	OB40331A	CE 47µ 16V (BP)	R157	OB05615A	RK 22K 1/4W J
237			R213	OB22633A	RM 150 1/4W F	C210	OB01674A	CE 10µ 25V	R158	OB01887A	RK 5.6K 1/4W J
Q206,209	OB10143A	TR 2SC3334	R214,215	OB09203A	RM 10K 1/4W F	C211	OB40330A	CE 10µ 100V	R158	OB05621A	RK 120K 1/4W J
Q207,229	OB10102A	TR 2SA1320	R217	OB22666A	RM 10 1/4W F	C212	OB01405A	CE 1µ 50V	R159	OB05508A	RK 56K 1/4W J
230			R218	OB22667A	RM 100 1/4W F	C213	OB41619A	CE 1µ 100V	R160,161	OB05641A	RK 47K 1/4W J
Q208	OB10142A	TR 2SC1321	R221,224	OB24058A	RF 3 2W J	TH201	OB19003A	Thermistor 102F	C114	OB40371A	CE 10µ 100V (BP)
Q210	OB10101A	TR 2SC2238B	R222,223	OB24064A	RC 1 2W	M201	OB90084A	Thermal Switch 75°C			
Q211	OB10100A	TR 2SA968B	R225-238	OB24057A	RF 1 2W J	RL201	OB90083A	Relay 10A 250V AC			
Q213	OB10130A	TR 2SC3281					OB81366A	2P-S Post (2)			
Q214	OB10129A	TR 2SA1302	R239	OB24059A	RF 5.1 2W J		OB82412C	DC Cord (R) (1)			
Q215-221	OB10098A	TR 2SA1294 (7)	R240	OB09752A	RM 274K 1/4W F		OB82413C	DC Cord (BL) (1)			
Q222-228	OB10099A	TR 2SC3263 (7)	R241	OB09446A	RM 33.2K 1/4W F		OB82414A	G-Prot. Cord (1)			
Q236	OB10145A	TR 2SC3298B	R242,245	OB05641A	RK 47K 1/4W J		OB82415C	G-Input Cord (1)	Q238,239	OB60309A	Protector R P.C.B. Ass'y
D201,202	OB06181A	SID 1SS53	R243,249	OB01846A	RK 4.7K 1/4W J		OB82419C	SP Out R Cord (1)	D210	OB10102A	TR 2SA1320
205,209			R244	OB24062A	RF 4.7K 1/2W J		OB82420D	SP Out B Cord (1)	D256	OB06181A	SID 1SS53
D203,204	OB06458A	SID 30D-2	R246	OB09509A	RK 20K 1/4W J		OB82480B	Input Cord (1)	R257	OB05615A	RK 22K 1/4W J
D206,207	OB12252A	SID S5500D	R247	OB05625A	RK 220K 1/4W J		OE00754A	M3x8 @ Pan (20)	R257	OB01887A	RK 5.6K 1/4W J
208			R248	OB05776A	RK 1M 1/4W J		OE00966A	M3x5 @ Binding (2)	R258	OB05621A	RK 120K 1/4W J
VR201	OB32043A	Semi-fixed VR 4.7K	R250	OB24060A	RF 1.8K 1W J		OB08680B	Heat Sink A (2)	R259	OB05508A	RK 56K 1/4W J
VR202	OB32052A	Semi-fixed VR 150	R251	OB24073A	RF 2.2K 1/2W J		OE00972A	Nut Hex. M3 (2)	R260,261	OB05641A	RK 47K 1/4W J
R201,208	OB09547A	RM 2.21K 1/4W F	R252	OB05615A	RK 22K 1/4W J		OB90082A	TR Mica (2)	C214	OB40371A	CE 10µ 100V (BP)
R202	OB09562A	RM 75K 1/4W F	R253	OB24073A	RF 2.2K 1/2W J		OB90075B	P.C.B. Stand (1)			
R203	OB22672A	RM 22.1K 1/2W F	R254	OB01857A	RK 1K 1/4W J						
R204	OB22671A	RM 15K 1/2W F	R255	OB41541A	C 330P 100V J						
			C202	OB41536A	CM 10µ 200V K						

5.6. Protector L P.C.B. Ass'y

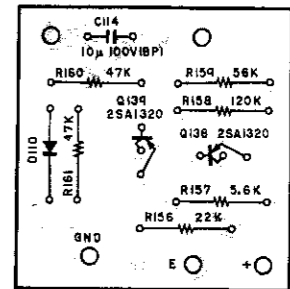


Fig. 5.6

5.7. Protector R P.C.B. Ass'y

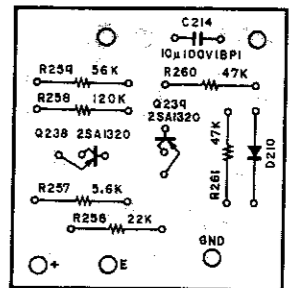


Fig. 5.7



6. SCHEMATIC DIAGRAM

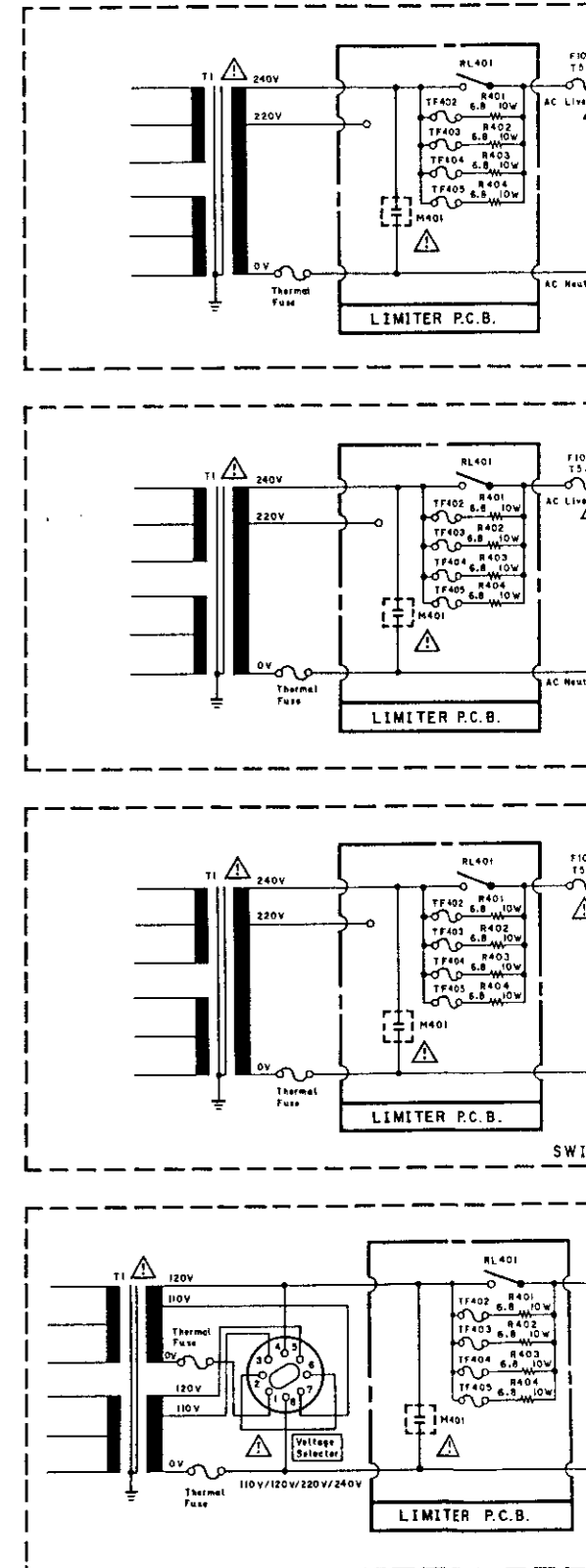
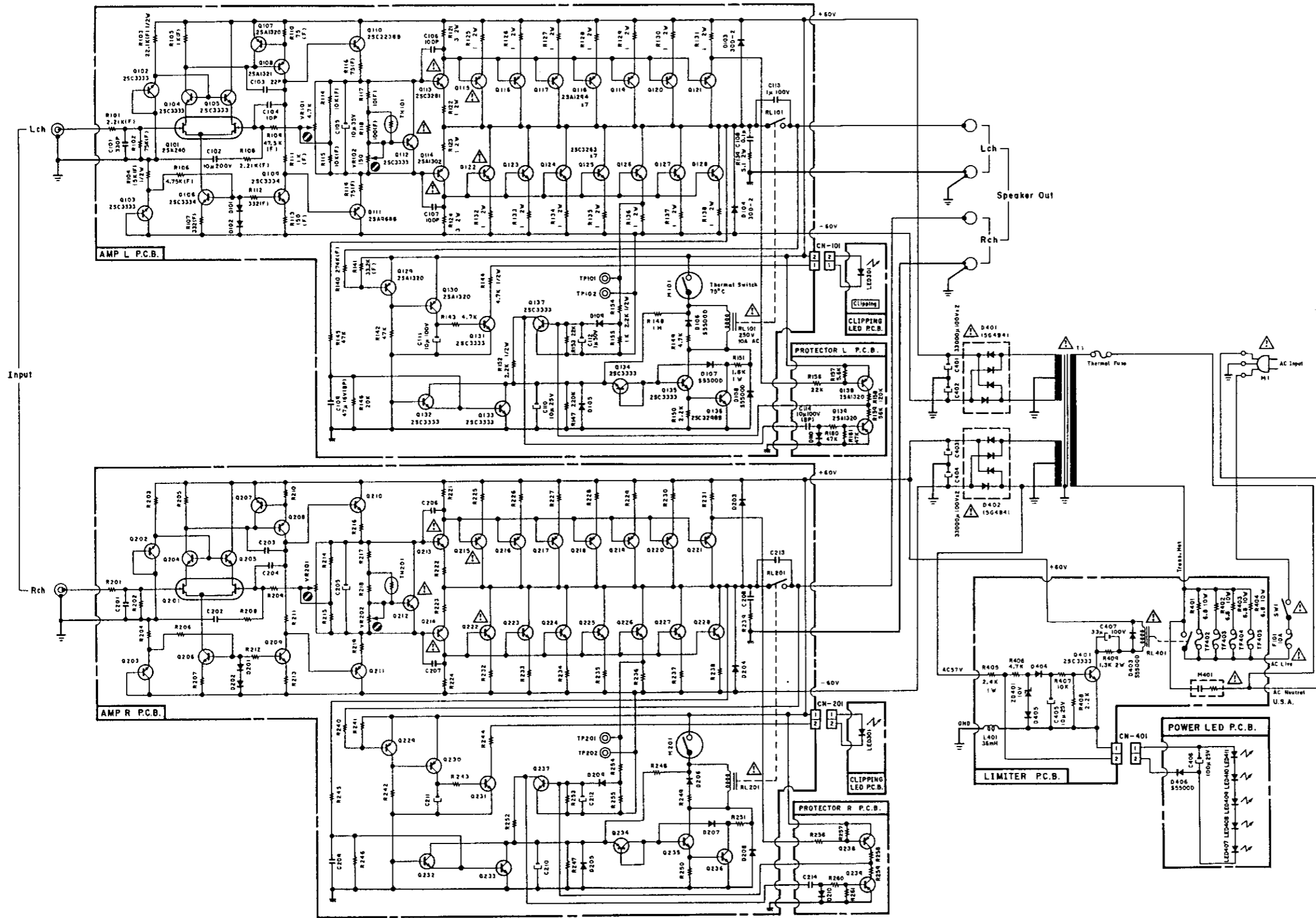


Fig. 6

Note: Diode is 1SS53, 1S1555, or 1SS176 unless otherwise specified.

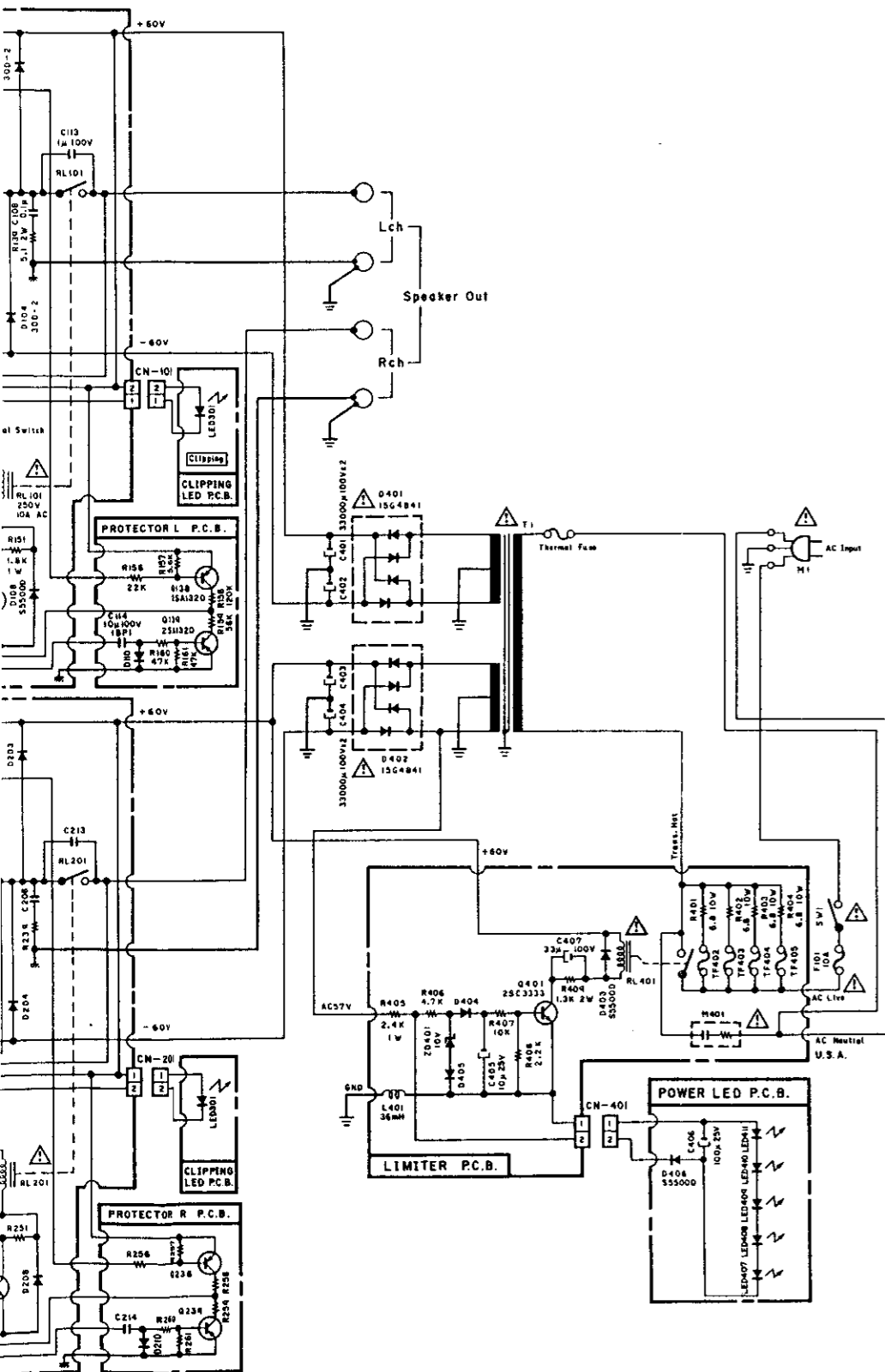
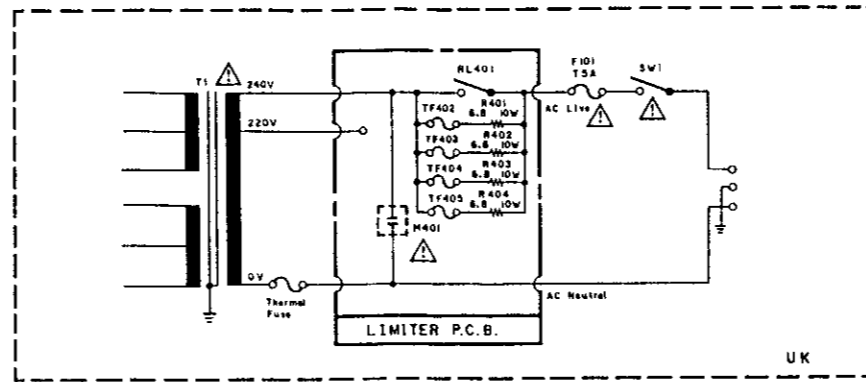
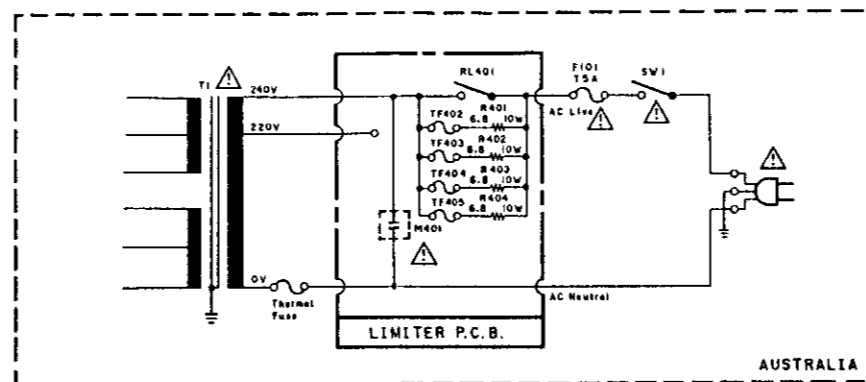


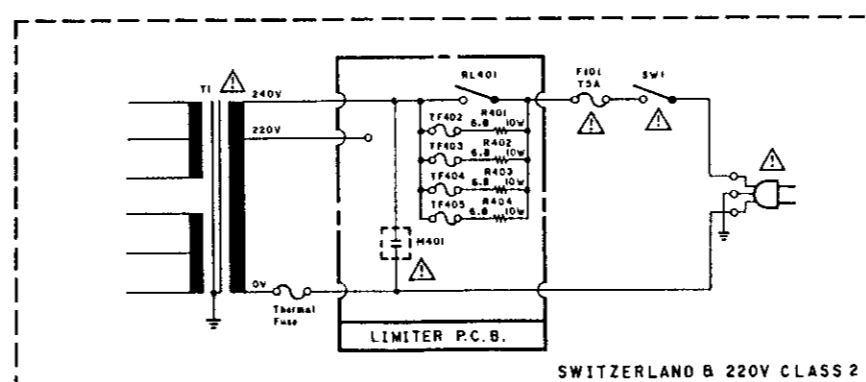
Fig. 6



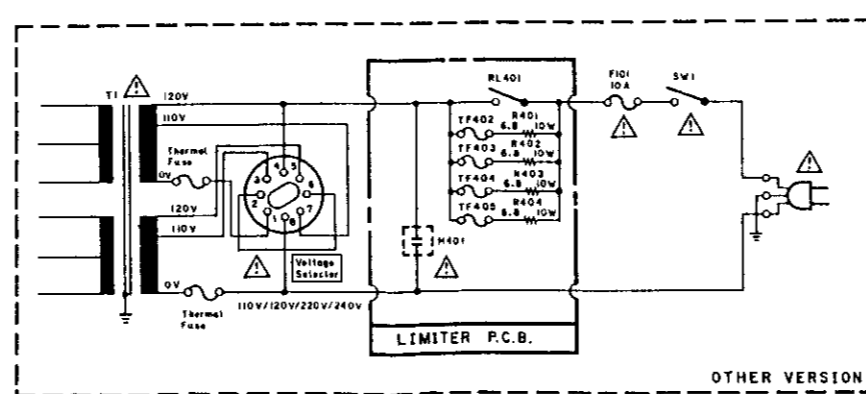
UK




AUSTRALIA



SWITZERLAND B 220V CLASS 2



OTHER VERSION

**WARNING:**  
 Parts marked with the symbol  have critical characteristics.  
 Use ONLY replacement parts recommended by the manufacturer.  
 It is recommended that the unit be operated from a suitable DC supply or batteries during initial check-out procedures.

**CAUTION:**  
 Before returning the unit to the customer, make sure you make either (1) a leakage current check or (2) a line to chassis resistance check. If the leakage current exceeds 0.5 milliamp, or if the resistance from chassis to either side of the power cord is less than 240 k ohms, the unit is defective.  
**WARNING — DO NOT** return the unit to the customer until the problem is located and corrected.

7. WIRING DIAGRAM

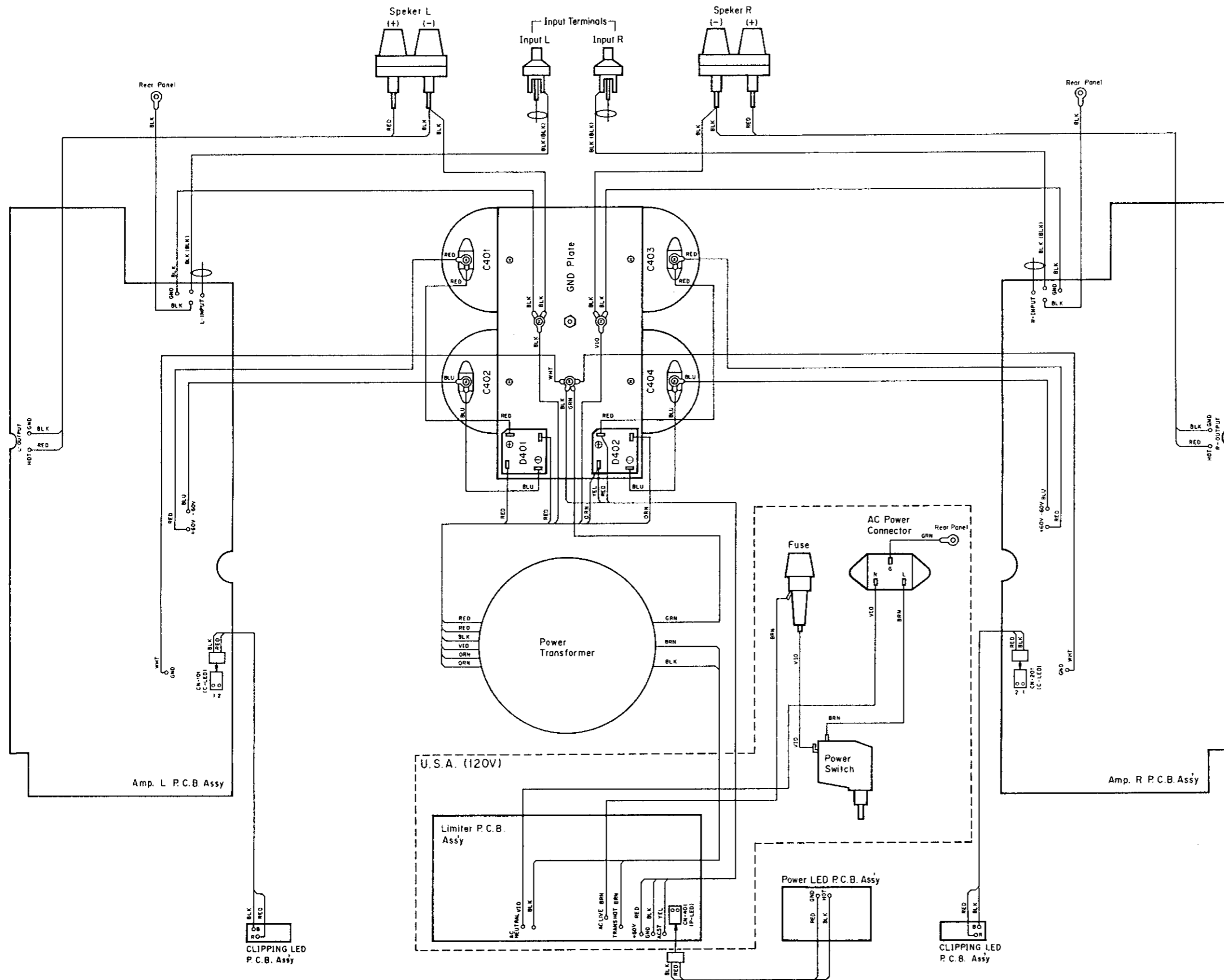
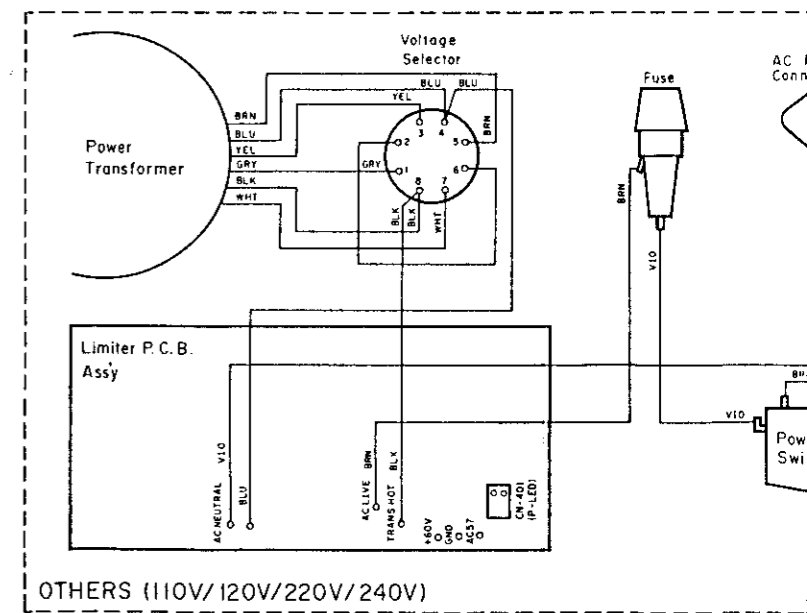
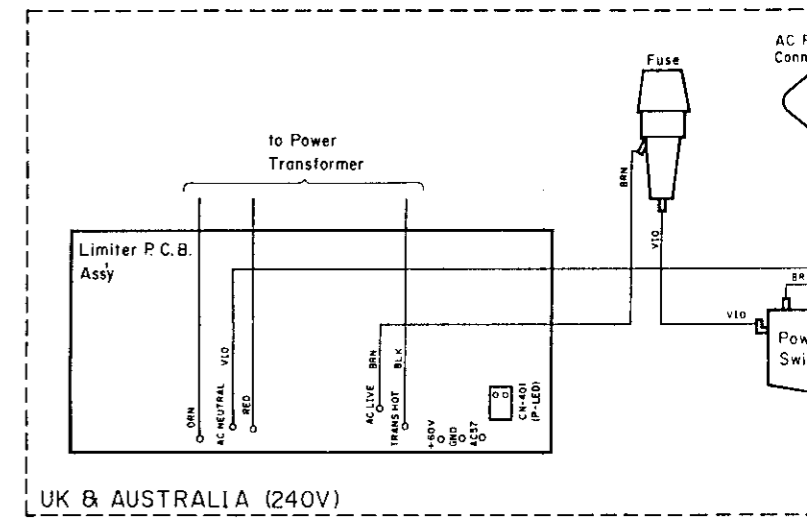
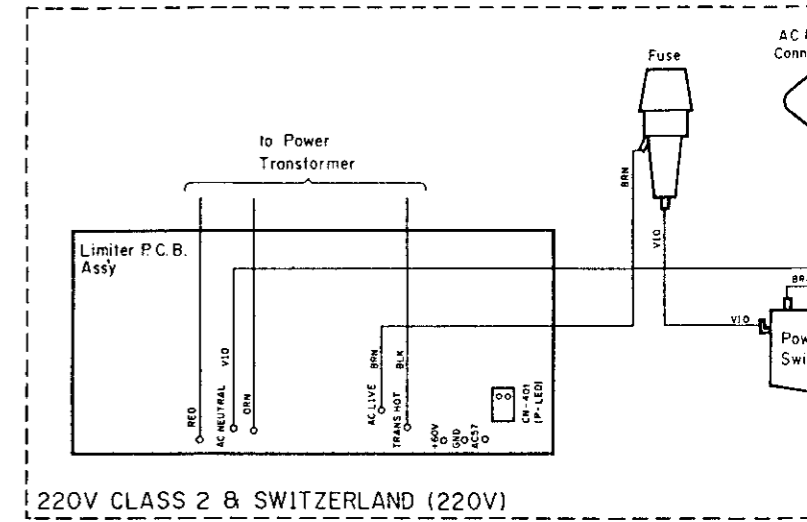


Fig. 7





## 9. SPECIFICATIONS

Continuous Average Power . . . .	200 W x 2 (8 ohms, both channels driven, 20—20,000 Hz, 0.1% THD)
Output (NEW IHF)	
Dynamic Power per Channel . . . .	300 W (8 ohms)
Dynamic Head Room . . . . .	1.7 dB (8 ohms)
(New IHF)	
Power Bandwidth (Half . . . . .	5 Hz — 50 kHz
Rated Power, 0.1% THD)	
Damping Factor (NEW IHF) . . . .	Greater than 60/60/60
20 Hz/1 kHz/20 kHz	
Input Sensitivity/Impedance . . . .	2.0 V/75 k ohms (rated power)
(New IHF)	140 mV (1 W output)
Frequency Response . . . . .	20—20,000 Hz +0, —0.5 dB
(1 W, NEW IHF)	7—150,000 Hz +0, —3 dB
Signal to Noise Ratio . . . . .	Better than 120 dB
(Input Shorted, Rated Power, IHF-A-WTD)	
Residual Noise Level . . . . .	Less than 25 $\mu$ V
(IHF-A-WTD)	
Total Harmonic Distortion . . . .	Less than 0.1%
(Rated Power, 20—20,000 Hz)	
Intermodulation Distortion . . . .	Less than 0.1%
(Rated Power, 60 Hz: 7 kHz, 4:1)	
Stereo Separation . . . . .	110/100/80 dB
(Input Shorted)	
100 Hz/1 kHz/10 kHz	
Output Complement . . . . .	16 transistors per channel
Output Current Capability . . . .	14 A continuous, 50 A peak (per channel)
Power Supply . . . . .	700 W toroidal transformer, 132,000 $\mu$ F total filter capacitance
Power Source . . . . .	120,220, 240, 110-120/220-240 V AC; 50/60 Hz (According to country of sale)
Power Consumption . . . . .	700 W max.
Dimensions . . . . .	435 (W) x 200 (H) x 421 (D) mm 17-1/8 (W) x 7-7/8 (H) x 16-9/16 (D) inches
Approximate Weight . . . . .	27 kg; 59 lbs., 8 oz.

- Specifications and design are subject to change for further improvement without notice.
- STASIS manufactured under license from Threshold Corporation.
- STASIS is a trademark of Threshold Corporation.