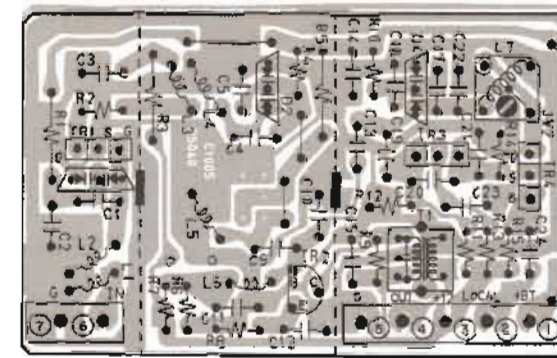


# **AKAI**

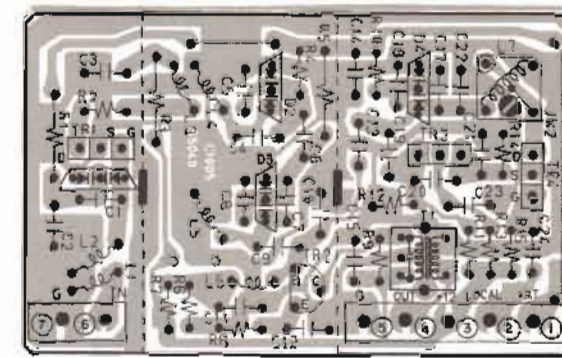
## **MODEL AT-A102/L**

### **SCHEMATIC DIAGRAM AND PC BOARD**

1. FRONT END PCB, POWER PCB, POWER SUPPLY PCB, TUNER PCB . . . . .	2
2. AT-A102 SCHEMATIC DIAGRAM . . . . .	3
3. AT-A102L SCHEMATIC DIAGRAM . . . . .	4
4. FRONT END PCB, POWER PCB, POWER SUPPLY PCB, TUNER PCB . . . . .	5
5. AT-A102 BLOCK DIAGRAM . . . . .	6

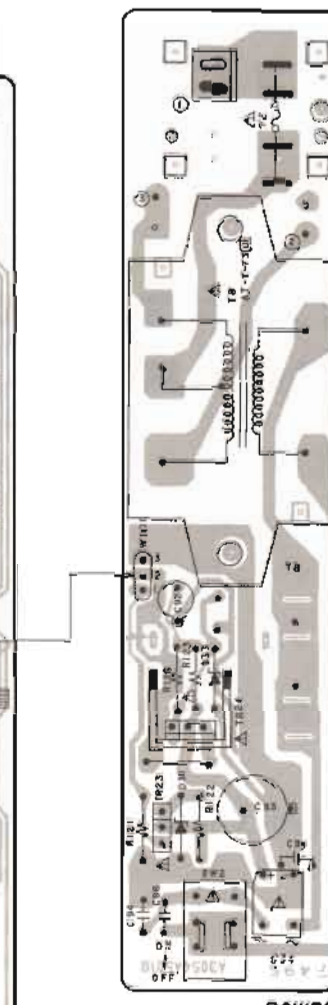
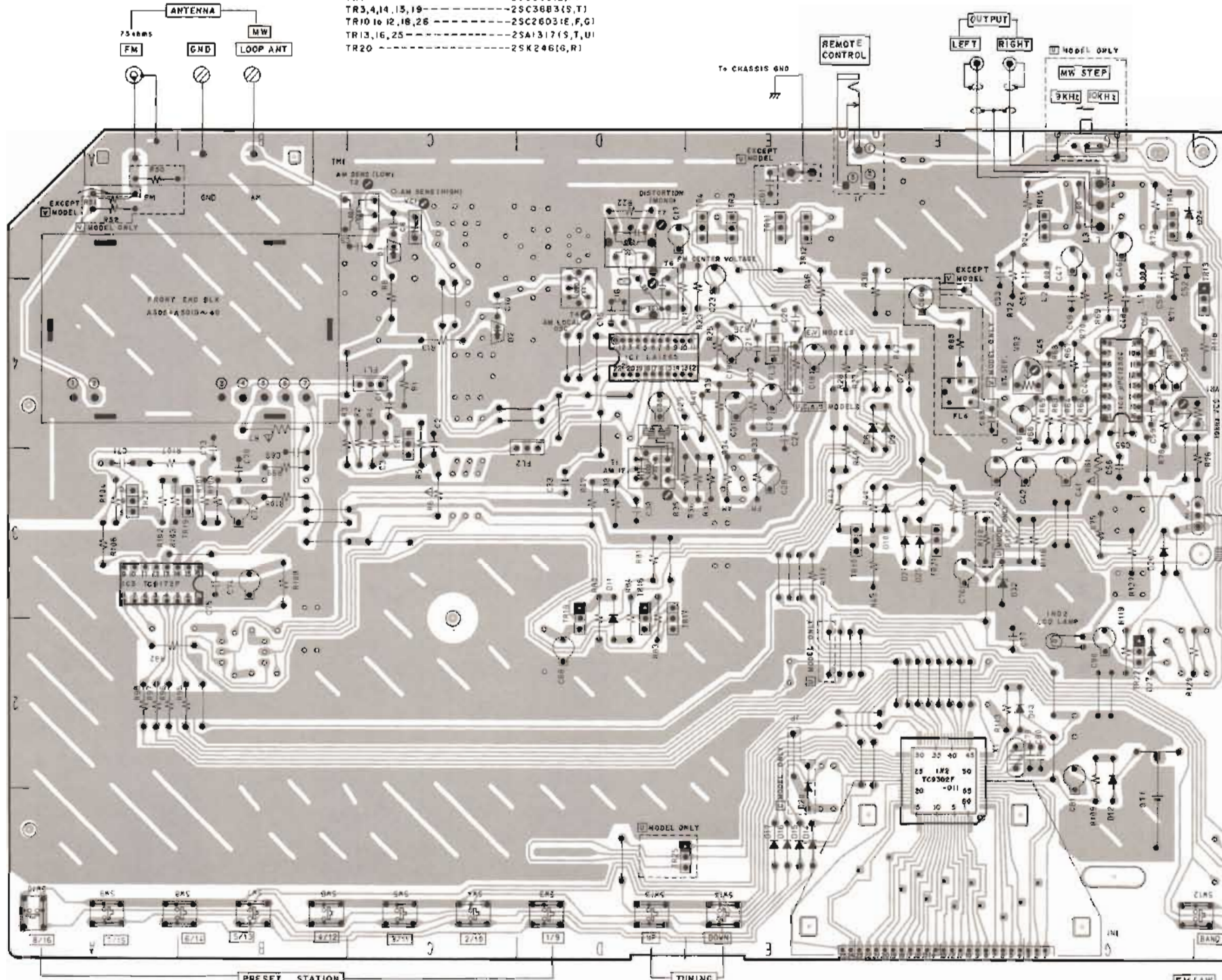


FRONT END PCB C1005B5040

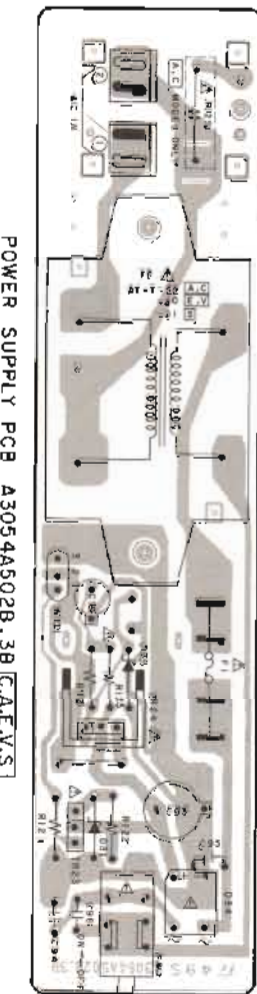


FRONT END PCB C1005B5040  
 MODEL ONLY

- TR1 ----- 2SC930(E,F)
- TR3,4,14,15,19 ----- 2SC3883(S,T)
- TR10 to 12,18,26 ----- 2SC2603(E,F,G)
- TR13,16,25 ----- 2SA1317(S,T,U)
- TR20 ----- 2SK246(S,R)



POWER PCB  
 A3054A501 B



POWER SUPPLY PCB A3054A502 B  CAEVS



1.1'0' 501-1052 9281  
 1.0'3' 5082352 6281



: NPN TRANSISTOR  
 : PNP TRANSISTOR

LOCATION OF COMPONENTS

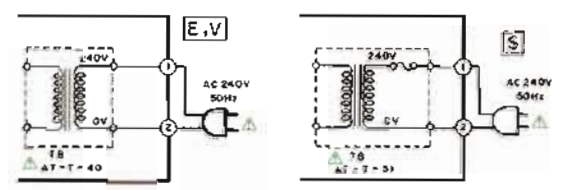
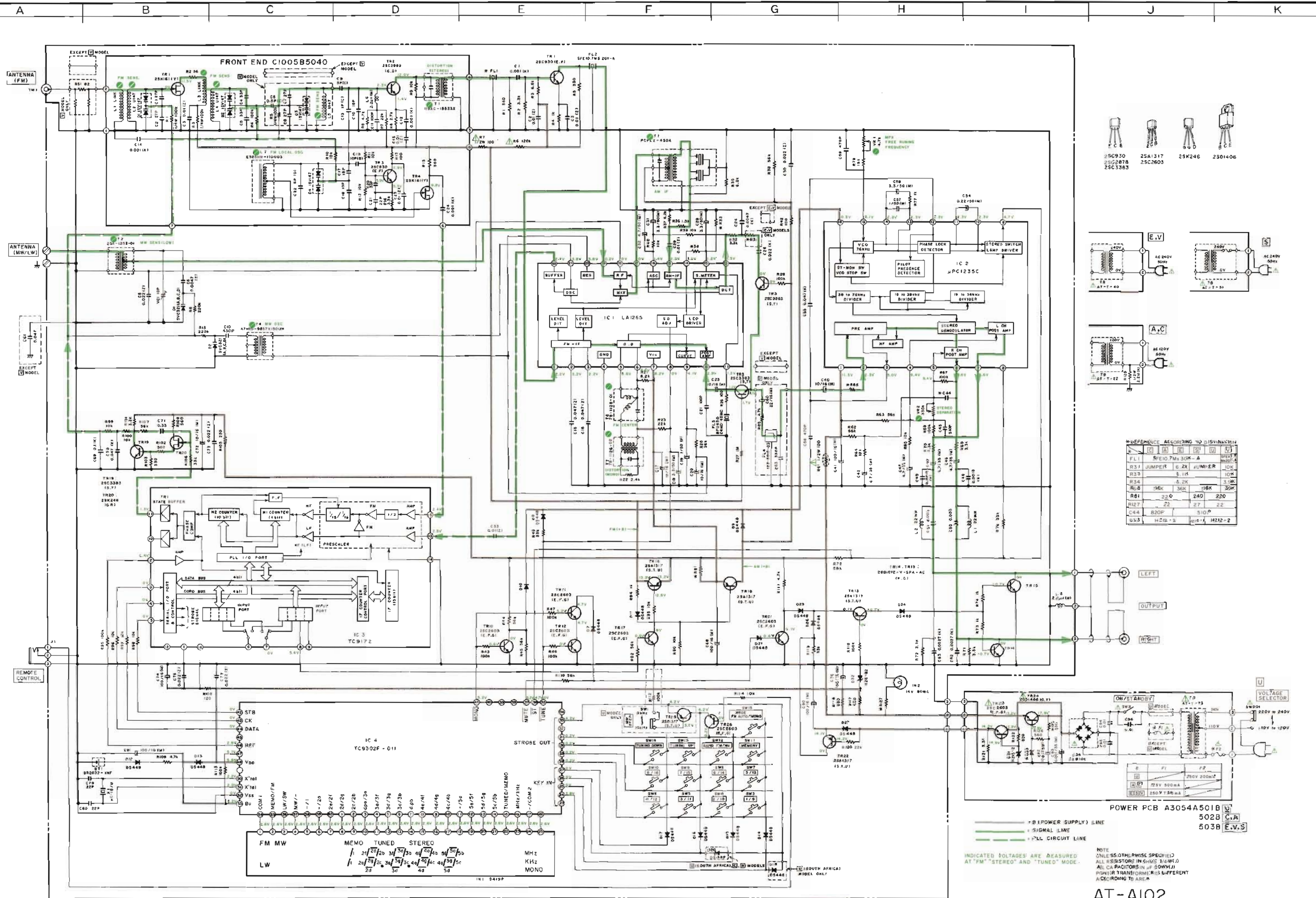
IC's	TR's	TR's	TR's
IC1---04	TR1---C5,4	TR13---H4	TR19---03
IC2---64	TR3---E5	TR14---G5	TR20---A3
IC3---A,B,3	TR4---E5	TR15---G5	TR21---F3
IC4---F1,2	TR10---E,F,3	TR16---02,3	TR22---G2
	TR11---E5	TR17---D2,3	TR25---H1
	TR12---E5	TR18---02,3	TR26---0,E,1



TUNER PCB A3054A 501A   
 502A  CA  
 503A  E.V.S.

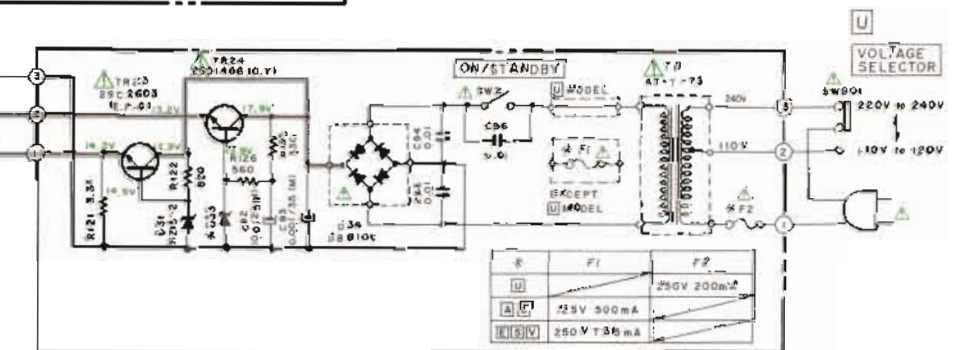
WARNING:  INDICATES SAFETY CRITICAL COMPONENTS. FOR CONTINUED SAFETY, REPLACE SAFETY CRITICAL COMPONENTS ONLY WITH MANUFACTURER'S RECOMMENDED PARTS.  
 AVERTISSEMENT:  INDIQUE LES COMPOSANTS CRITIQUES DE SECURITE. POUR MAINTENIR LE DEGRE DE SECURITE DE L'APPAREIL, NE REMPLACER QUE DES PIECES RECOMMANDEES PAR LE FABRICANT.





REFERENCE ACCORDING TO DISPOSITION

REF.	TYPE	VALUE	DISPOSITION
FL1	INDUCTOR	500 μH	100%
R31	JUMPER	0 Ω	100%
R33	JUMPER	0 Ω	100%
R34	JUMPER	0 Ω	100%
R68	RESISTOR	10K	100%
R81	RESISTOR	220	24D 220
R127	RESISTOR	22	27 22
C44	CAPACITOR	820P	510P
D33	DIODE	H202-2	H212-2



POWER PCB A3054A501B  
 502B C.A.  
 503B E.V.S.

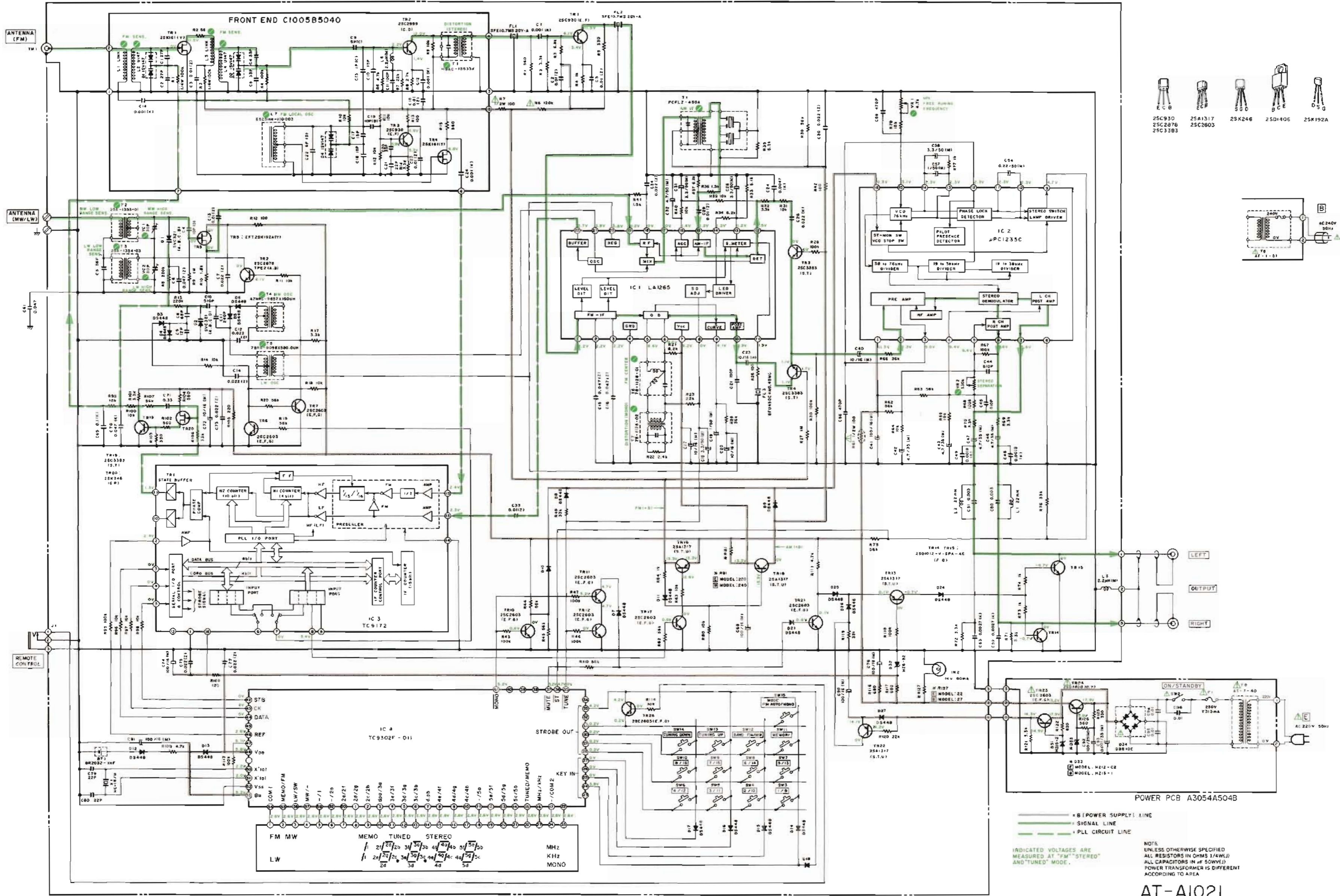
INDICATED VOLTAGES ARE MEASURED AT "FM" "STEREO" AND "TUNED" MODE.  
 NOTE: UNLESS OTHERWISE SPECIFIED, ALL RESISTORS IN OHMS (1/4W), ALL CAPACITORS IN μF (50V). POWER TRANSFORMER IS DIFFERENT ACCORDING TO AREA.

TUNER(U) PCB A3054A501A  
 TUNER(C) PCB A3054A502A  
 TUNER(E) PCB A3054A503A

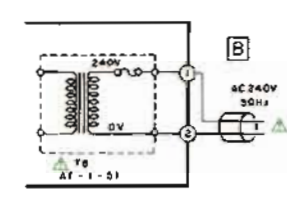
AT-A102  
 SCHEMATIC DIAGRAM  
 No. 860303A

WARNING: INDICATES SAFETY CRITICAL COMPONENTS FOR CONTINUED SAFETY. REPLACE SAFETY CRITICAL COMPONENTS ONLY WITH MANUFACTURER'S RECOMMENDED PARTS.  
 AVERTISSEMENT: IL INDIQUE LES COMPOSANTS CRITIQUES DE SECURITE. POUR MAINTENIR LE DEGRE DE SECURITE DE L'APPAREIL, IL FAUT LES REMPLACER QUE DES PIECES RECOMMANDEES PAR LE FABRICANT.





- 25C930
- 25C2876
- 25C3383
- 25A1317
- 25C2603
- 25K246
- 25D1406
- 25K192A



LEFT  
 OUTPUT  
 RIGHT

POWER PCB A3054A504B

Legend:  
 - (Power Supply) Line  
 - Signal Line  
 - PLL Circuit Line

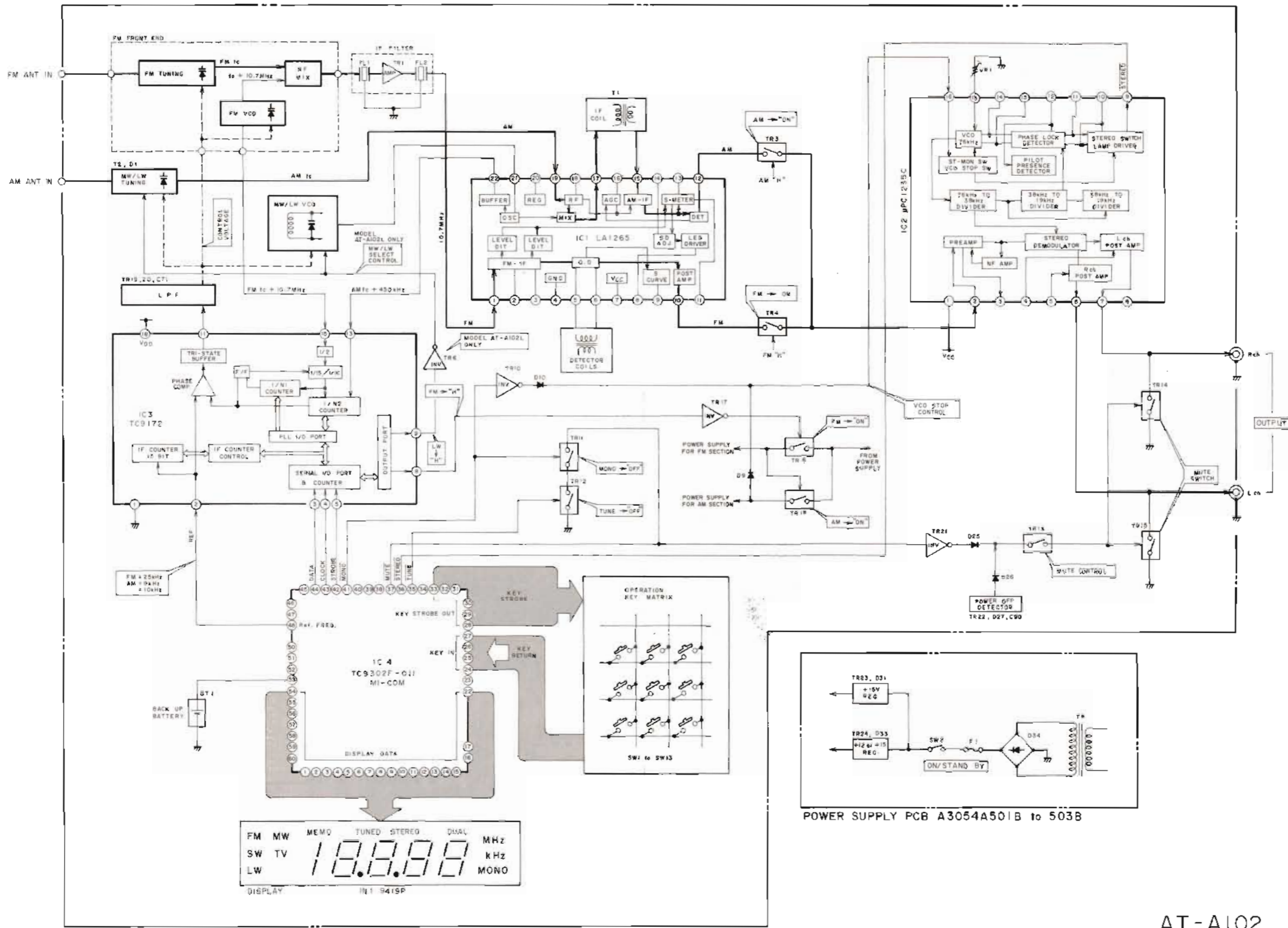
NOTES:  
 - INDICATED VOLTAGES ARE MEASURED AT "FM" "STEREO" AND "TUNED" MODE.  
 - UNLESS OTHERWISE SPECIFIED ALL RESISTORS IN OHMS (1/4W) ALL CAPACITORS IN #F (50WV) POWER TRANSFORMER IS DIFFERENT ACCORDING TO AREA

**AT-A102L SCHEMATIC DIAGRAM No. 860304A**

WARNING: INDICATES SAFETY CRITICAL COMPONENTS FOR CONTINUED SAFETY. REPLACE SAFETY CRITICAL COMPONENTS ONLY WITH MANUFACTURER'S RECOMMENDED PARTS.  
 AVERTISSEMENT: ILLUMINE LES COMPOSANTS CRITIQUES DE SECURITE. POUR MAINTENIR LE DEGRE DE SECURITE DE L'APPAREIL, NE REMPLACEZ QUE DES PIECES RECOMMANDEES PAR LE FABRICANT.



AT-A102

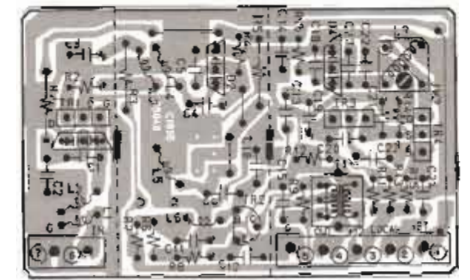


TUNER PCB A3054A501A to 503A

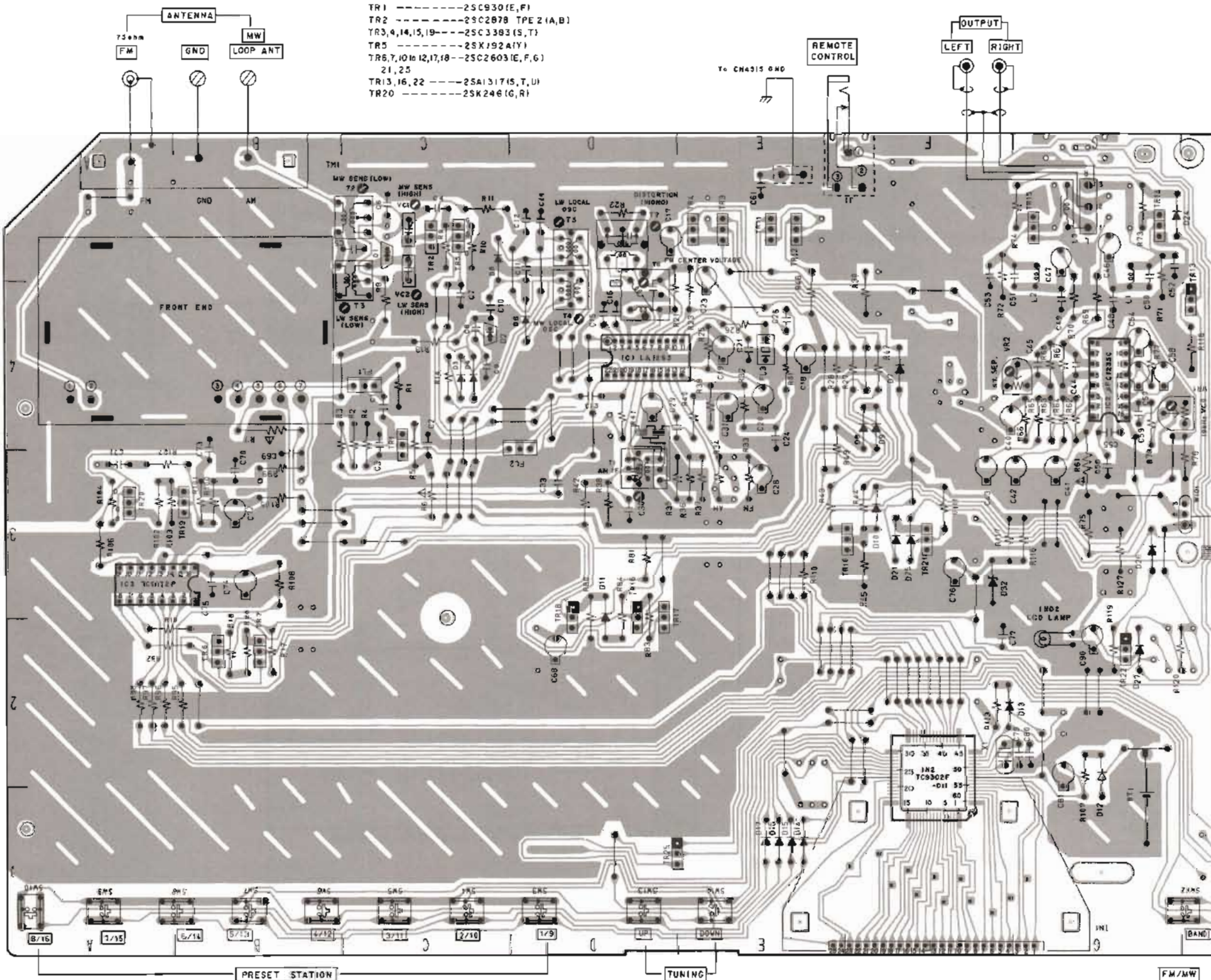
POWER SUPPLY PCB A3054A501B to 503B

AT-A102  
BLOCK DIAGRAM  
NO. 860302A

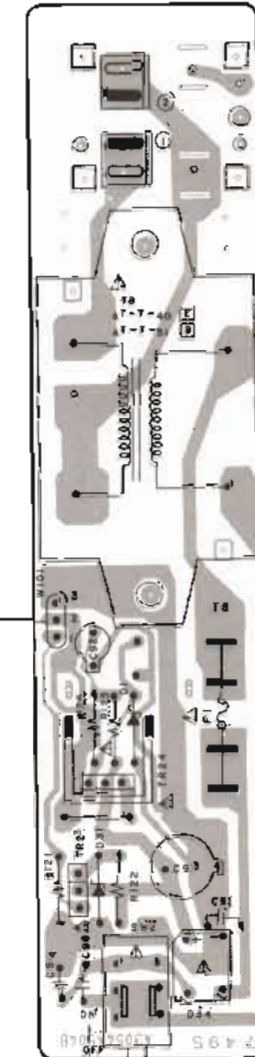




FRONT END PCB C1005B5040



- TR1 -----2SC930(E,F)
- TR2 -----2SC2878 TPE Z(A,B)
- TR3,4,14,15,19---2SC3383(S,T)
- TR5 -----2SK192A(IY)
- TR6,7,10,12,17,18---2SC2603(E,F,G)
- 21,25
- TR13,16,22 ----2SA1317(I,S,T,U)
- TR20 -----2SK246(I,G,R)



POWER ON/STANDBY POWER PCB A3054A504B E,B



2SC2603



2SD1406(I,Y)

TR25 2SC2603(E,F,G)  
TR24 2SD1406(I,Y)

PRESET STATION

TUNING

FM/MW

FM AUTO/MONO

- IC1---04
- IC2---64
- IC3---A,B3
- IC4---F1,2

LOCATION OF COMPONENTS

- |            |             |              |
|------------|-------------|--------------|
| TR1---C3,4 | TR10---E,F3 | TR18---D2,3  |
| TR2---C5   | TR11---E5   | TR19---B3    |
| TR3---E5   | TR12---E5   | TR20---A3    |
| TR4---E5   | TR13---H4   | TR21---F3    |
| TR5---C5   | TR14---G5   | TR22---G2    |
| TR6---B2   | TR16---D2,3 | TR25---H1    |
| TR7---B2   | TR17---D2,3 | TR26---D,E,I |



2SC3383  
2SC2878  
2SC930



2SA1317  
2SC2603



2SK192A



2SK246

TUNER PCB A3054A504A

WARNING: Δ INDICATES SAFETY CRITICAL COMPONENTS. FOR CONTINUED SAFETY, REPLACE SAFETY CRITICAL COMPONENTS ONLY WITH MANUFACTURER'S RECOMMENDED PARTS.  
AVERTISSEMENT: Δ ILL INDIQUE LES COMPOSANTS CRITIQUES DE SÉCURITÉ. POUR MAINTENIR LE DEGRÉ DE SÉCURITÉ DE L'APPAREIL, NE REMPLACER QUE DES PIÈCES RECOMMANDÉES PAR LE FABRICANT.