

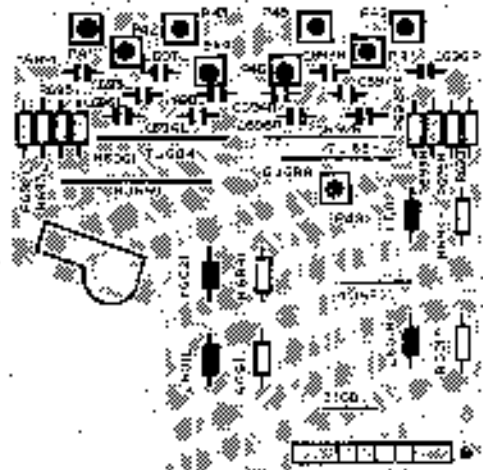
Technische Daten Technical Data	Spécifications Specifications	Caractéristiques techniques Technical Data	Dati tecnici Technical Data	CV 6060
<b>Anlagenleistung</b> Systemleistung 500 W (20 Hz) Musikleistung 1000 W (100 Hz bis 20 kHz) 1000 W (100 Hz)	<b>Maximum output</b> 500 W (20 Hz) (power factor) 1000 W (100 Hz) Music power (up to 20 kHz) 1000 W (100 Hz) (power factor) 1000 W (100 Hz)	<b>Puissance de sortie</b> 500 W (20 Hz) 1000 W (100 Hz) Music power (up to 20 kHz) 1000 W (100 Hz) 1000 W (100 Hz)	<b>Potenza d'uscita</b> 500 W (20 Hz) 1000 W (100 Hz) Music power (up to 20 kHz) 1000 W (100 Hz) 1000 W (100 Hz)	500 W 1000 W 1000 W 1000 W
<b>Leistungsänderung</b>	<b>Flux gain response</b>	<b>Verse de puissance</b>	<b>Variazioni di potenza</b>	17.8 dB
<b>Stabilität</b> 0.1% (100 Hz bis 20 kHz)	<b>Formant distortion</b> 0.1% (100 Hz bis 20 kHz)	<b>Distorsion</b> 0.1% (100 Hz bis 20 kHz)	<b>Distorsione armonica</b> 0.1% (100 Hz bis 20 kHz)	0.1%
<b>Bandspannengrenzen</b> 50 Hz bis 20 kHz 50 Hz bis 20 kHz 50 Hz bis 20 kHz	<b>Signal-to-noise ratio</b> 60 dB (100 Hz bis 20 kHz) 60 dB (100 Hz bis 20 kHz) 60 dB (100 Hz bis 20 kHz)	<b>Hauteur des bandeurs sonores</b> 50 Hz bis 20 kHz 50 Hz bis 20 kHz 50 Hz bis 20 kHz	<b>Selezione</b> 50 Hz bis 20 kHz 50 Hz bis 20 kHz 50 Hz bis 20 kHz	60 dB 60 dB 60 dB
<b>Überspannungsgrenze</b>	<b>Grain distortion</b>	<b>Grainage</b>	<b>Grainage</b>	50 dB
<b>Eingänge</b> CD, DSD, DSD+, DSD+, DSD+	<b>Inputs</b> CD, DSD, DSD+, DSD+, DSD+	<b>Entrées</b> CD, DSD, DSD+, DSD+, DSD+	<b>Entrées</b> CD, DSD, DSD+, DSD+, DSD+	100 W (100 Hz) 100 W (100 Hz)
<b>Ausgänge</b> CD, DSD, DSD+, DSD+, DSD+	<b>Outputs</b> CD, DSD, DSD+, DSD+, DSD+	<b>Sorties</b> CD, DSD, DSD+, DSD+, DSD+	<b>Sorties</b> CD, DSD, DSD+, DSD+, DSD+	100 W (100 Hz) 100 W (100 Hz)
<b>Leistungsaufnahme</b> 100 W	<b>Power input</b> 100 W	<b>Consommation de courant</b> 100 W	<b>Potenza assorbita</b> 100 W	100 W
<b>Netzspannung</b> 230 V AC 230 V AC 230 V AC	<b>Multi voltage</b> 230 V AC 230 V AC 230 V AC	<b>Voltses secteur</b> 230 V AC 230 V AC 230 V AC	<b>Tensione di rete</b> 230 V AC 230 V AC 230 V AC	230 V AC 230 V AC 230 V AC
<b>Maße</b> 100 x 100 x 100 mm	<b>Dimensions</b> 100 x 100 x 100 mm	<b>Dimensions</b> 100 x 100 x 100 mm	<b>Dimensioni</b> 100 x 100 x 100 mm	100 x 100 x 100 mm

## Abgleichanleitung - Alignment Instruction

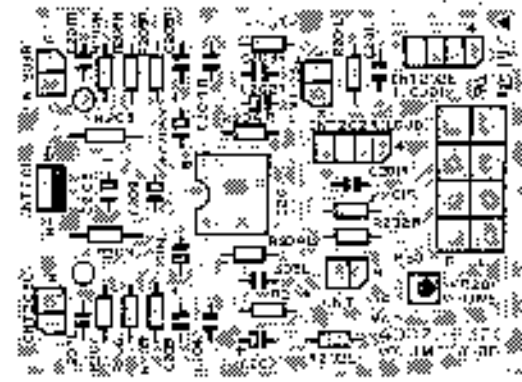
Signalkette Signal source	Abgleich Signalelek. Signal source/adjust	Einstellung Gerät Unit adjustment	Anzeigegerät A und K/F Indicate connection	Abgleichposition Adjustment position	Abgleich Bemerkung Aligning Remarks
<b>Ruhestrom - Quiescent Current</b>					
		Power On  Volume Minimum  Standby On  Speaker P.O. (Individual channel) Load resistor  Switch 4 Minuten vom Audio lassen (Wait approx. 4 minute)	DC-voltmeter and/or TP 3 - GND  TP 6 - GND	WF 607 L  WF 601 R	$0V \pm 50 mV$  $0V \pm 50 mV$



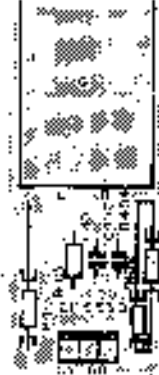
Grandelette  
M.E.T. C.B.  
Platine principale



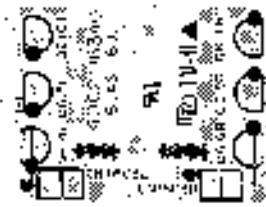
Volume plate  
P.C.B. Volume  
Platine volume



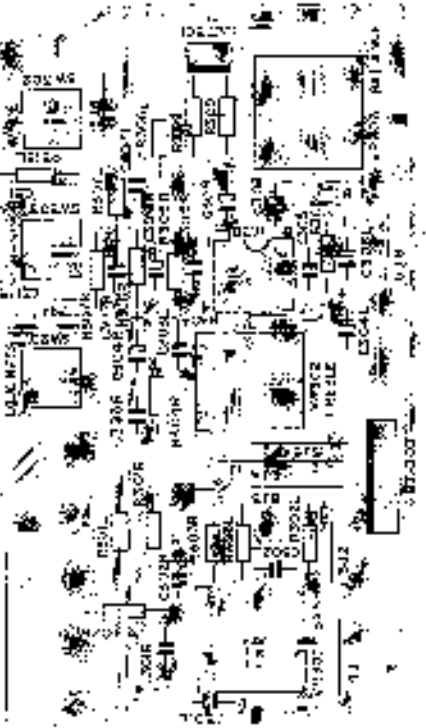
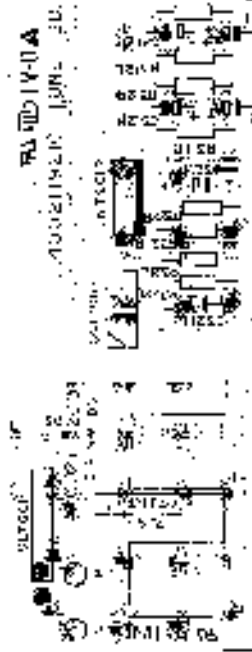
Kopfbandanschlusskarte  
C.B. Headphone Jack  
Platine prise écoute



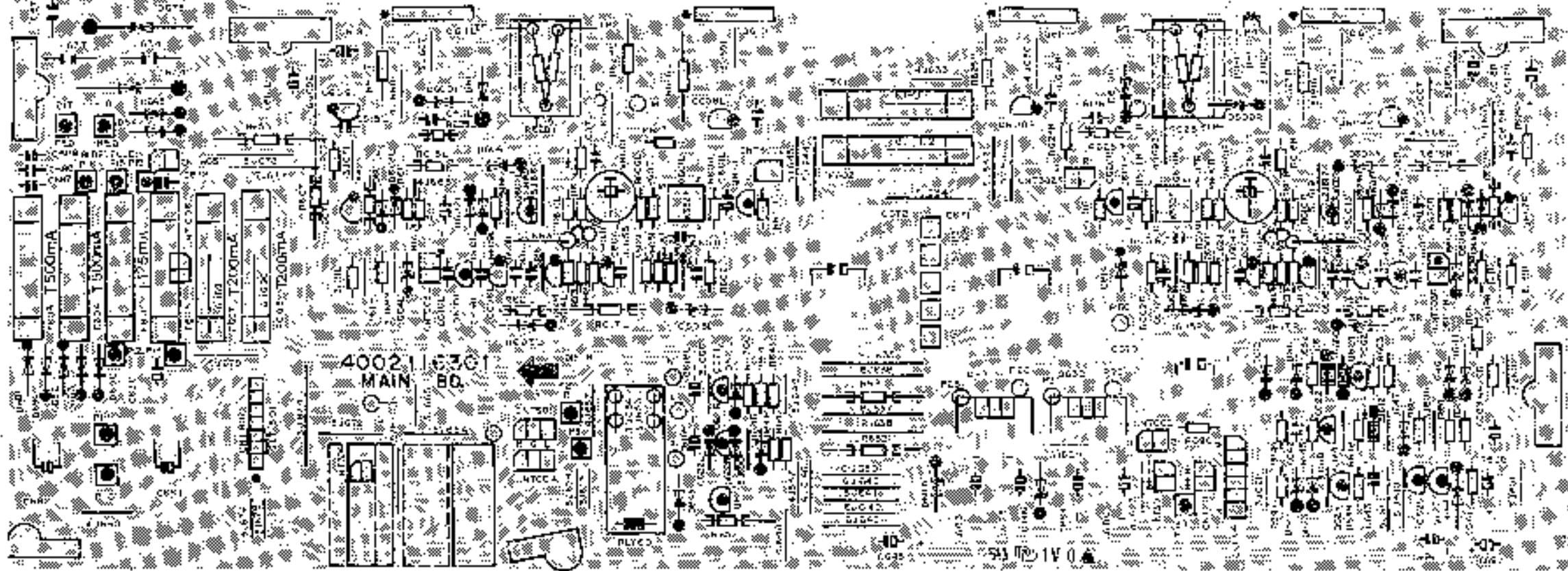
Basplate  
P.C.B. Base  
Platine de base



Klarplatte  
Sound board  
Platine sons



Speakers into  
H.C.B. Speakers  
Platine haut parleur

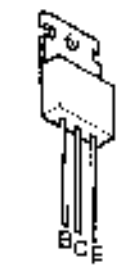




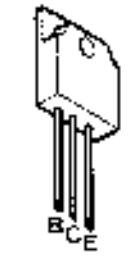
MPS A 05  
MPS A 55  
MPS 9633



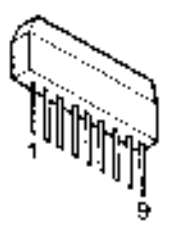
KTA 817 A  
2 SA 817 A  
KTA 949 Y  
2 SA 949 Y  
KTA 1015 GR  
2 SA 1015  
KTA 1302  
2 SC 1302  
KTC 1627 A  
2 SC 1627 A  
KTC 1815 Y  
2 SC 1815 Y  
KTC 2229 Y  
2 SC 2229 Y  
KTC 2240  
2 SC 2240



2 SD 1406 GR  
2 SB 0366



2 SA 1489  
2 SC 3853  
2 SA 1491  
2 SC 3855

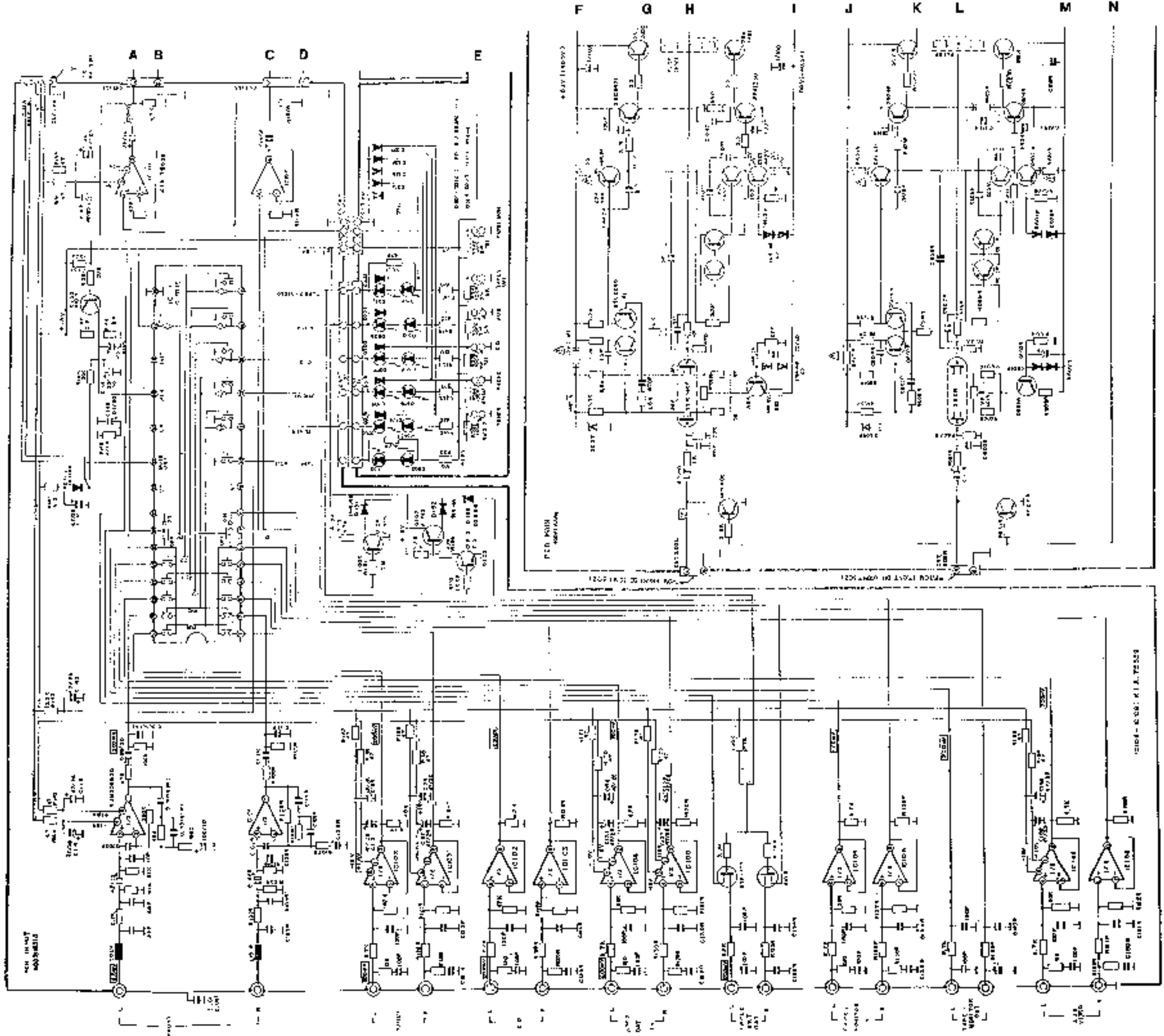


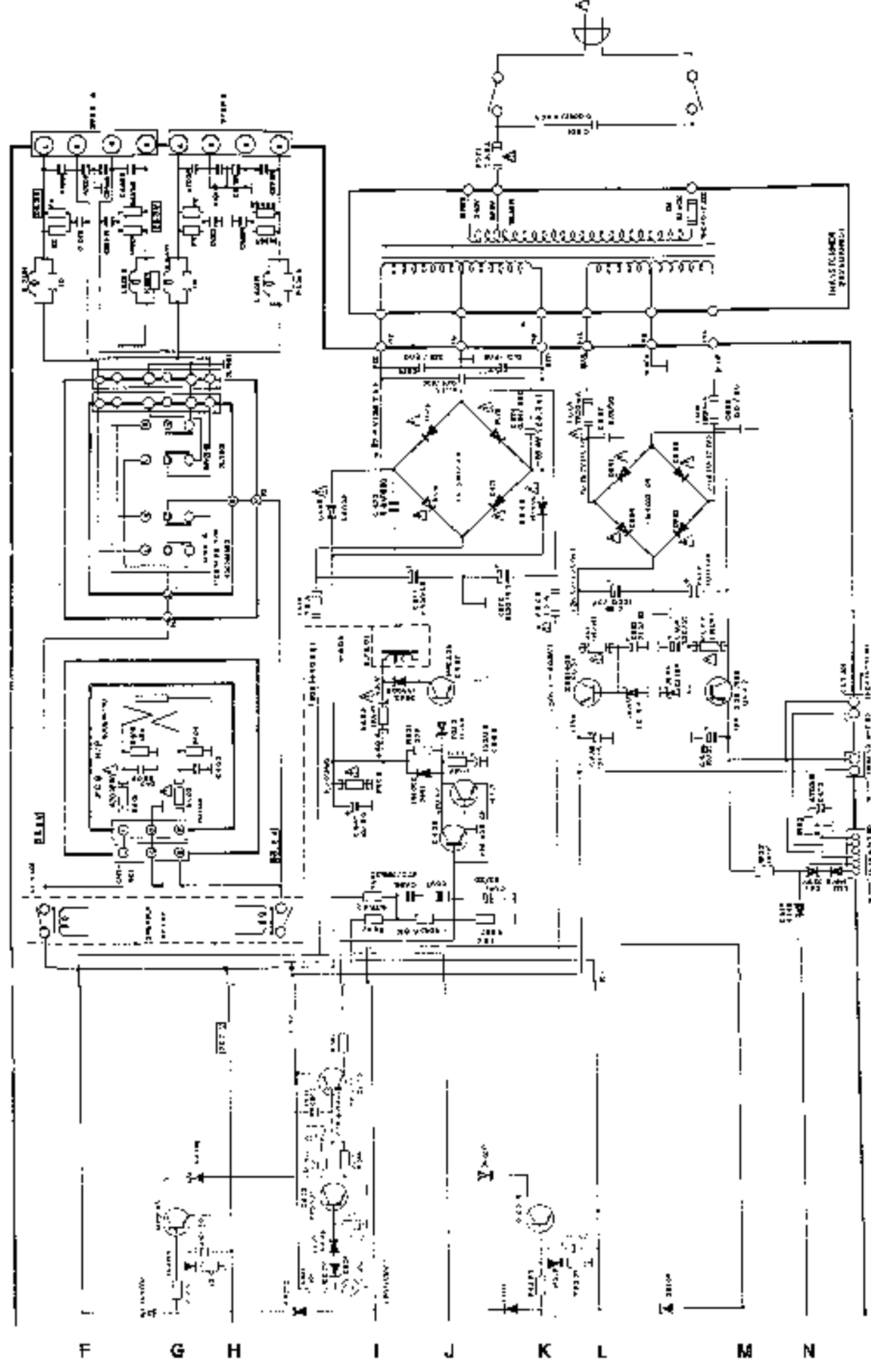
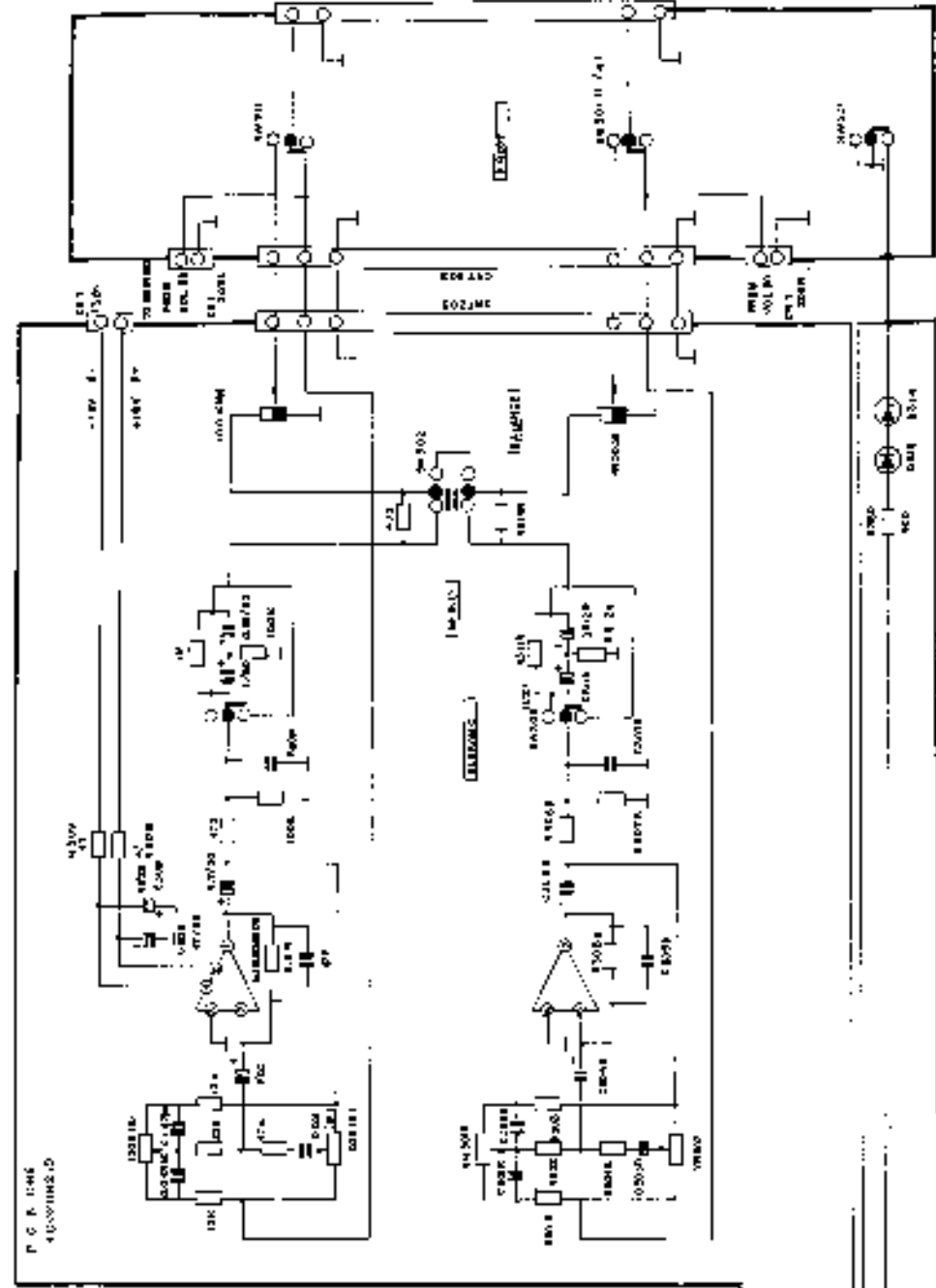
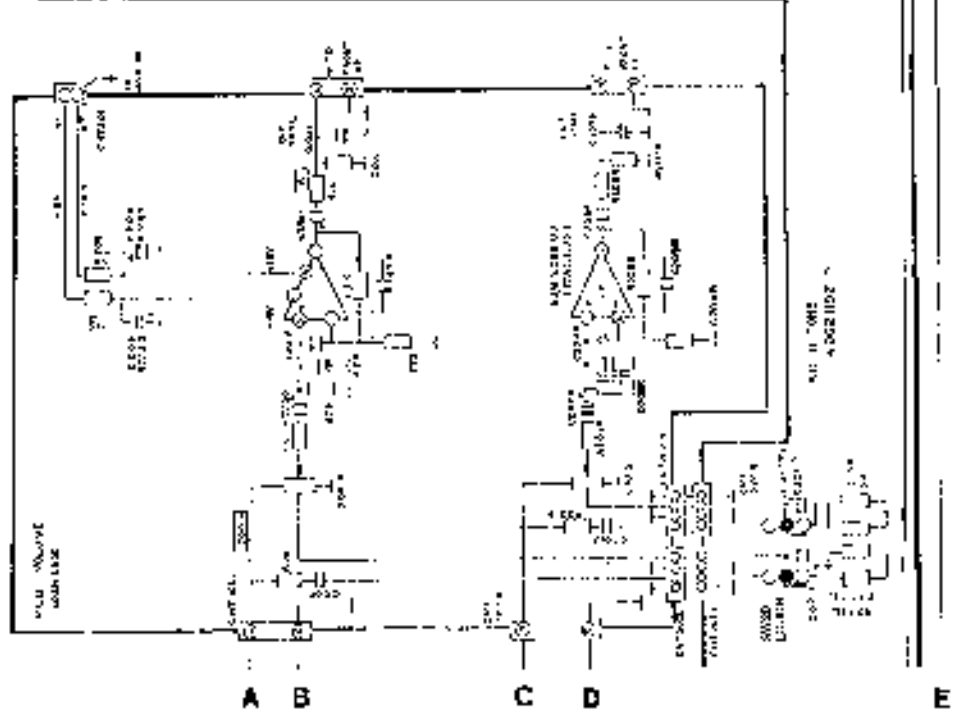
KIA 7555 S  
NJM 4360 S

NJM 2068 DD  
KIA 75559

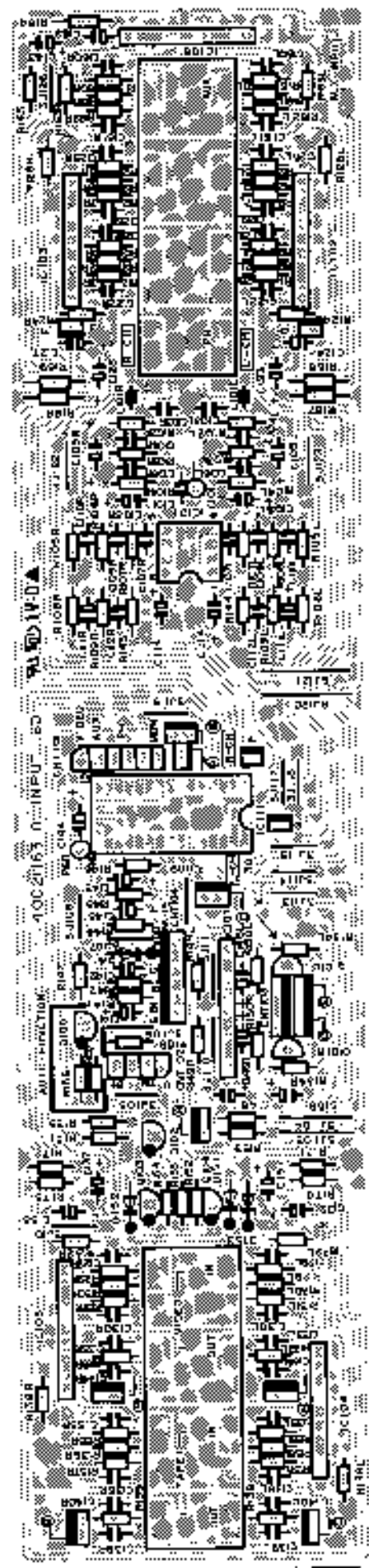


2 SK 332 F

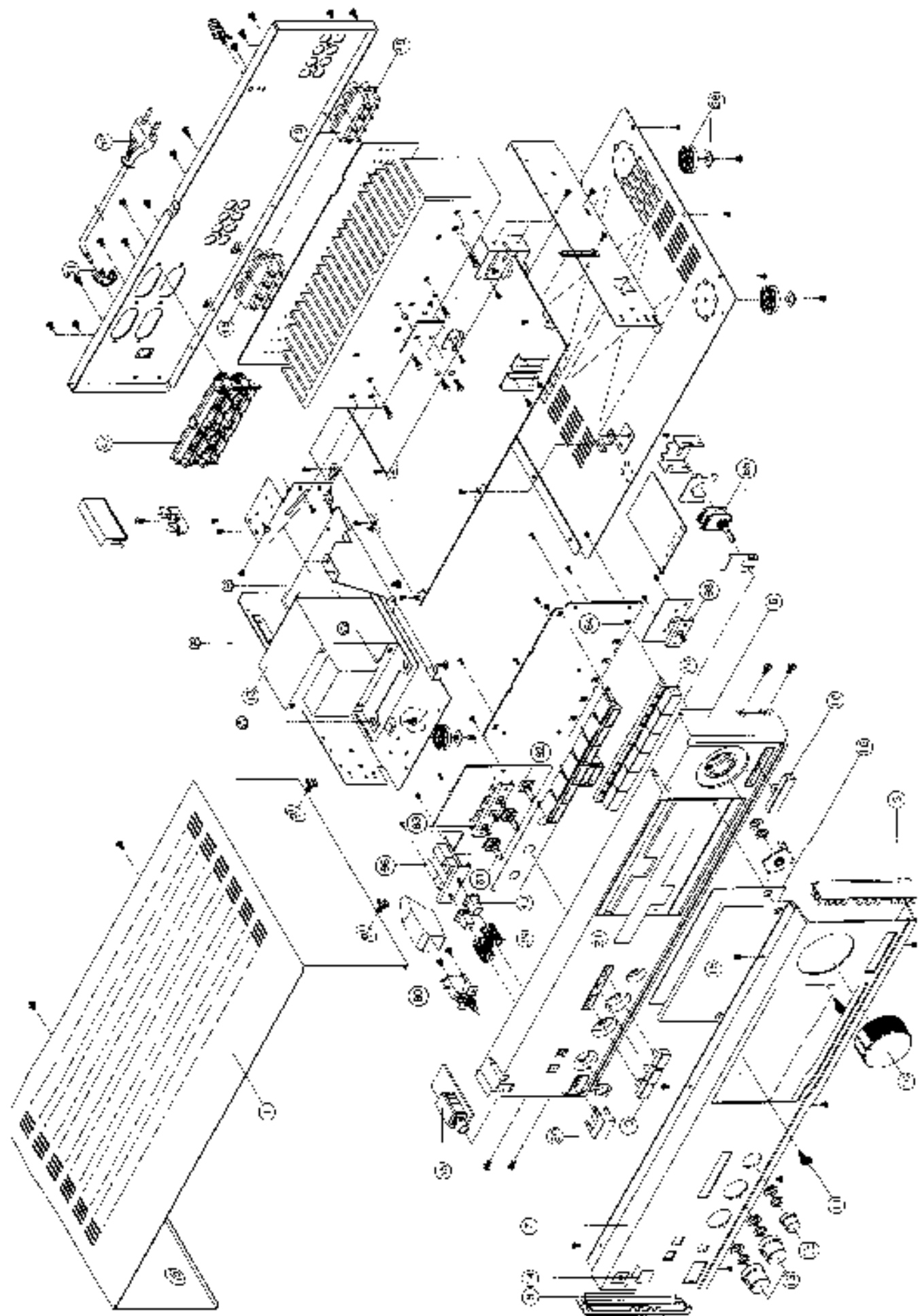
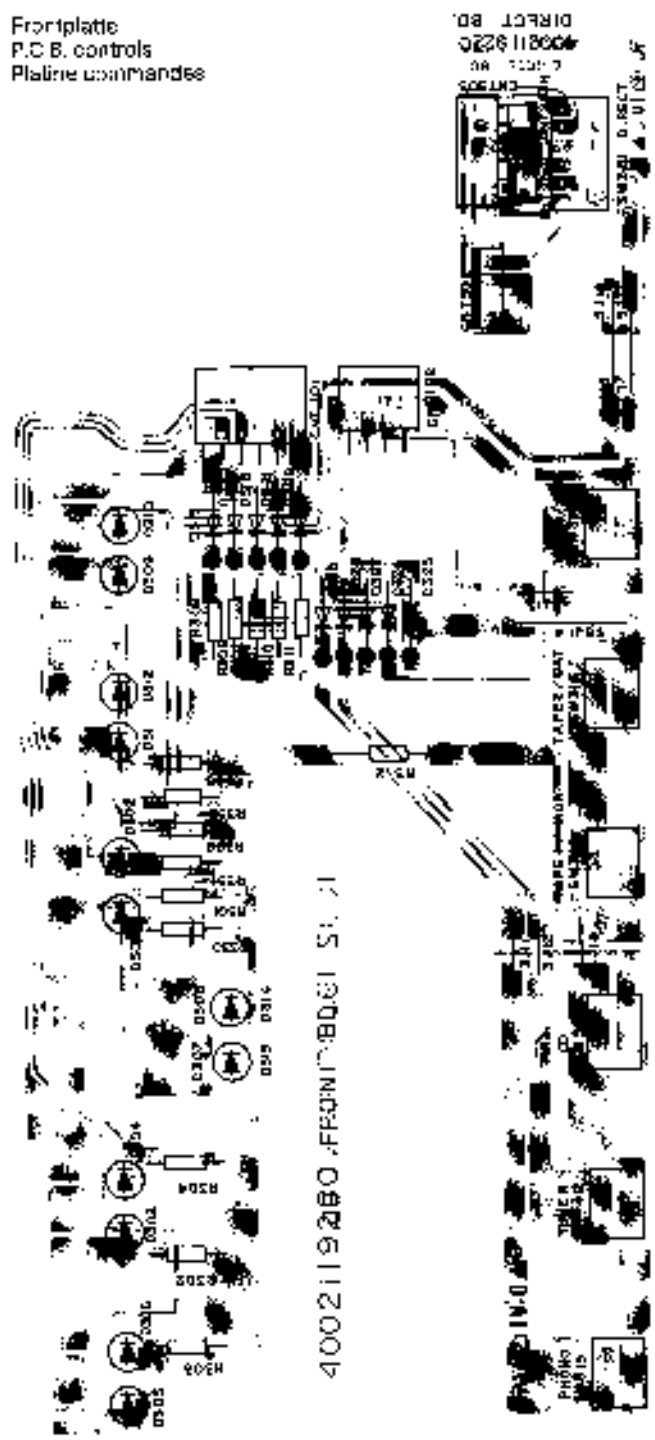




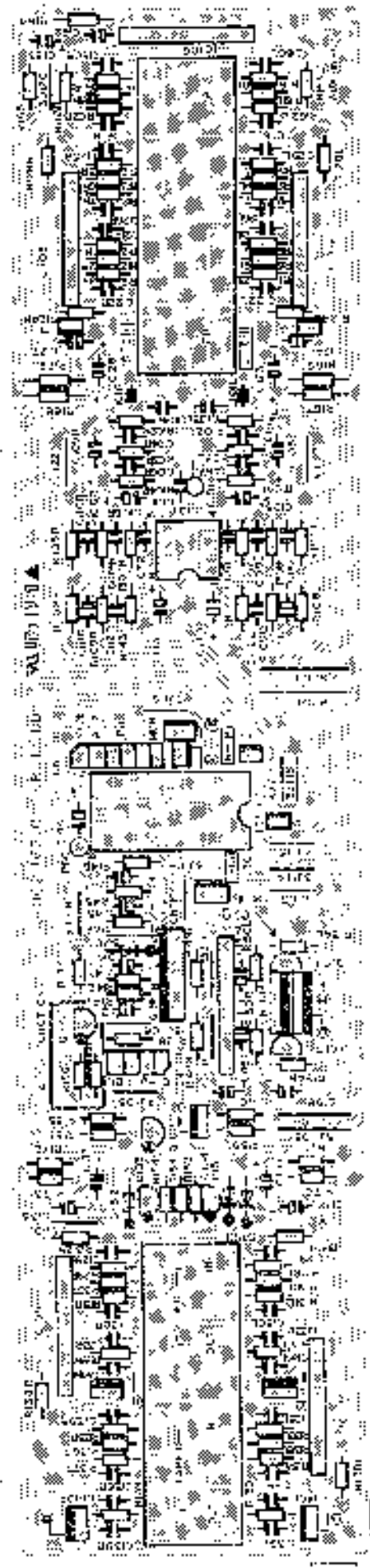
Eingangplatte  
P.C.B. sockets  
Platine prisee



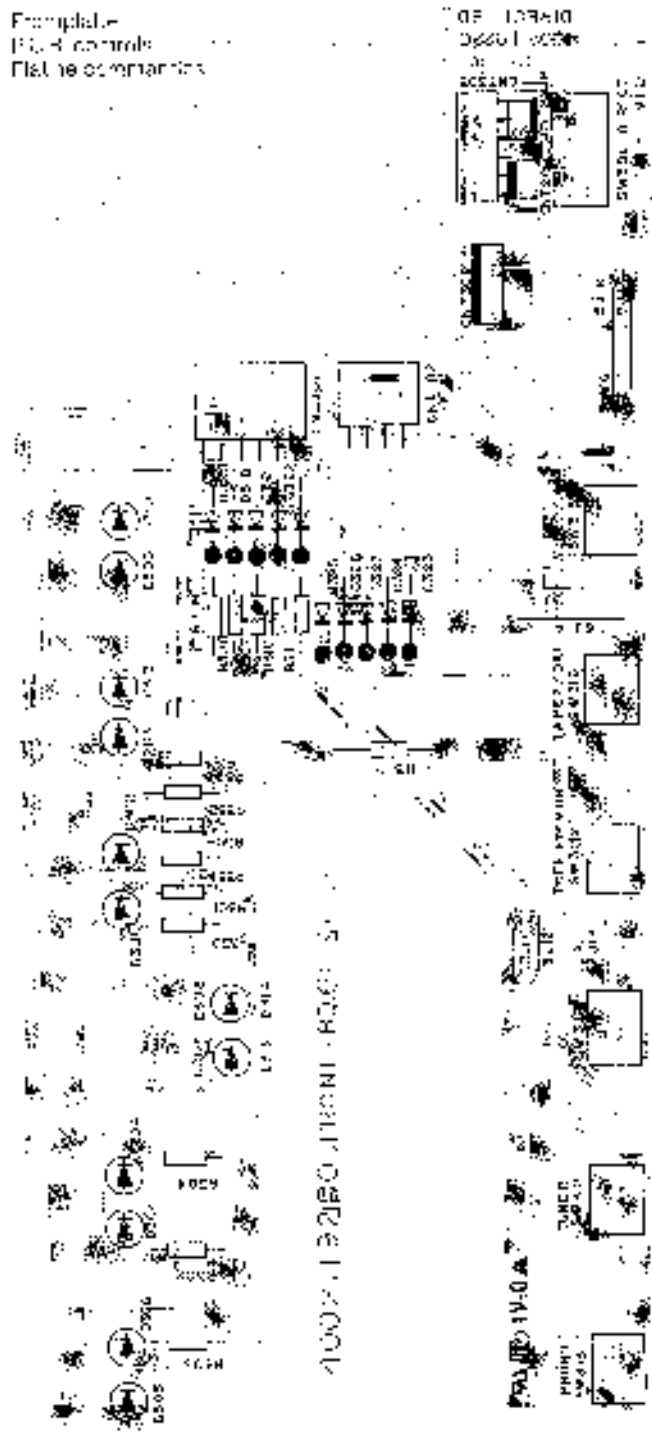
Frontplatte  
P.C.B. controls  
Platine commandes



ringplatte  
P.C.B. stroke.s  
Platine print



Formplate  
P.C.B. controls  
Platine controls



100X192B0 JICINI - R000 5

