

Brandt FERGUSON SABA TELEFUNKEN THOMSON

AUDIO

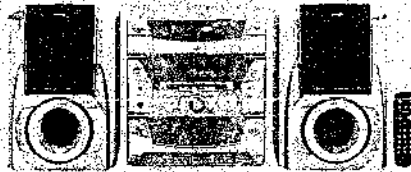


**SERVICE MANUAL
DOCUMENTATION TECHNIQUE
TECHNISCHE DOKUMENTATION
DOCUMENTAZIONE TECNICA
DOCUMENTACION TECNICA**

THOMSON ALTIMA 3400

Version (PC)*: A

PC: This version code is indicated either in the battery compartment or on the back of the unit - ce code version est indiqué dans le compartiment à piles ou au dos de l'appareil - PC: Version des Geräts wird im Batteriefach oder auf der Rückseite angegeben - il codice della versione è indicato nello scompartimento delle batterie o sul retro dell'apparecchio - el código de la versión está indicado en el compartimento de las pilas o en la parte trasera del aparato.



This service manual refers only to the specific circuit diagrams of this set. Regarding the other parts, please refer to the following service manual: ALTIMA 3000 / 3005 - 351 148 50.

La présente documentation technique ne traite que des circuits spécifiques à cet appareil. Pour les autres parties, se reporter à la documentation technique suivante: ALTIMA 3000 / 3005 - 351 148 50.

Diese technische Dokumentation zeigt anschliesslich die spezifischen Schaltbilder dieses Gerätes. Weitere technische Informationen entnehmen Sie bitte dem folgenden Service Manual: ALTIMA 3000 / 3005 - 351 148 50.

Questa documentazione tecnica tratta solo dei circuiti specifici di questo apparecchio. Per le altre parti, consultare la documentazione tecnica del: ALTIMA 3000 / 3005 - 351 148 50.

El presente libro técnico solo trata de los circuitos específicos de esta aparato. En lo que se refiere a las otras partes referirse al libro técnico del: ALTIMA 3000 / 3005 - 351 148 50.

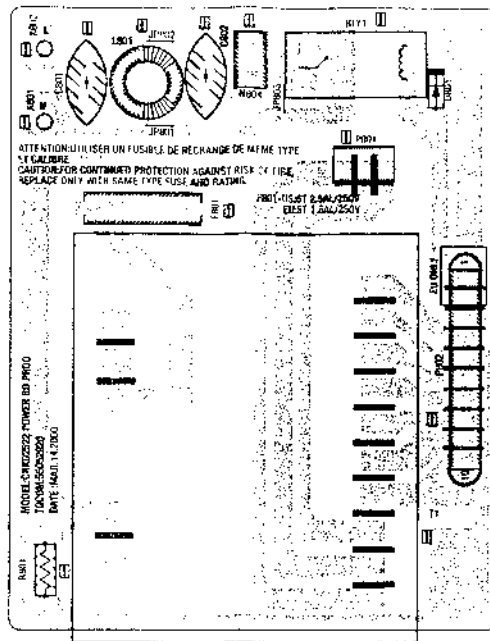
Technical data - Caractéristiques principales Technische Daten - Dati tecnici - Características del aparato

Power supply: Alimentation: Stromversorgung: Alimentazione: Alimentación:	230 V 50 Hz	Nominal output power: Puissance nominale de sortie: Nennausgangsleistung: Potenza nominale di uscita: Potencia nominal de salida:	2 x 12 W (rms) woofer 2 x 40 W (rms)
Signal to noise ratio: Rapport signal / bruit: Geräuschspannungsabstand: Rapporto segnale / disturbo: Relación señal / ruido:	45 dB	Signal to noise ratio: Rapport signal / bruit: Geräuschspannungsabstand: Rapporto segnale / disturbo: Relación señal / ruido:	45 dB
DAD Frequency response: Courbe de réponse: Frequenzgang: Curva di risposta: Curva de respuesta:	40 Hz - 20kHz (±2 dB)	Signal to noise ratio: Rapport signal / bruit: Geräuschspannungsabstand: Rapporto segnale / disturbo: Relación señal / ruido:	65 dB

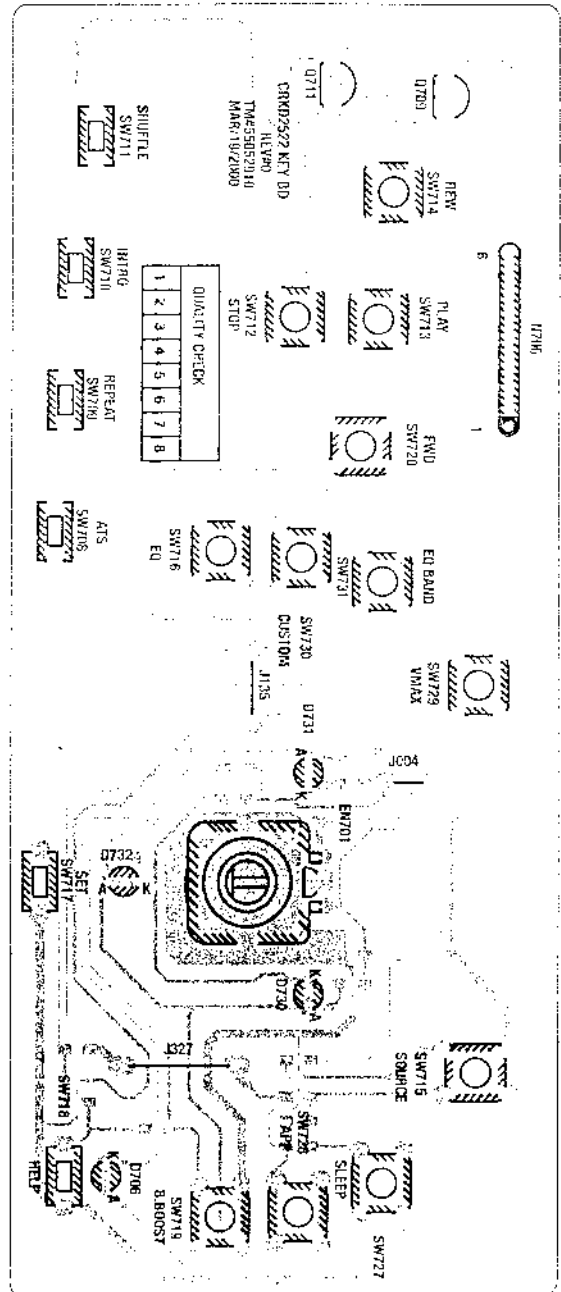


WARNING: Before servicing this chassis please read the safety recommendations.
ATTENTION: Avant toute intervention sur ce châssis, lire les recommandations de sécurité.
ACHTUNG: Vor jedem Eingriff auf diesem Chassis, die Sicherheitsvorschriften lesen.
ATTENZIONE: Prima di intervenire sullo chassis, leggere le norme di sicurezza.
IMPORTANTE: Antes de cualquier intervención, leer las recomendaciones de seguridad.

Code : 351 226 10 - 0700 / 2,9M - CRKD 2522 print VALGOSAIN - SAULEUR - AVUILLE

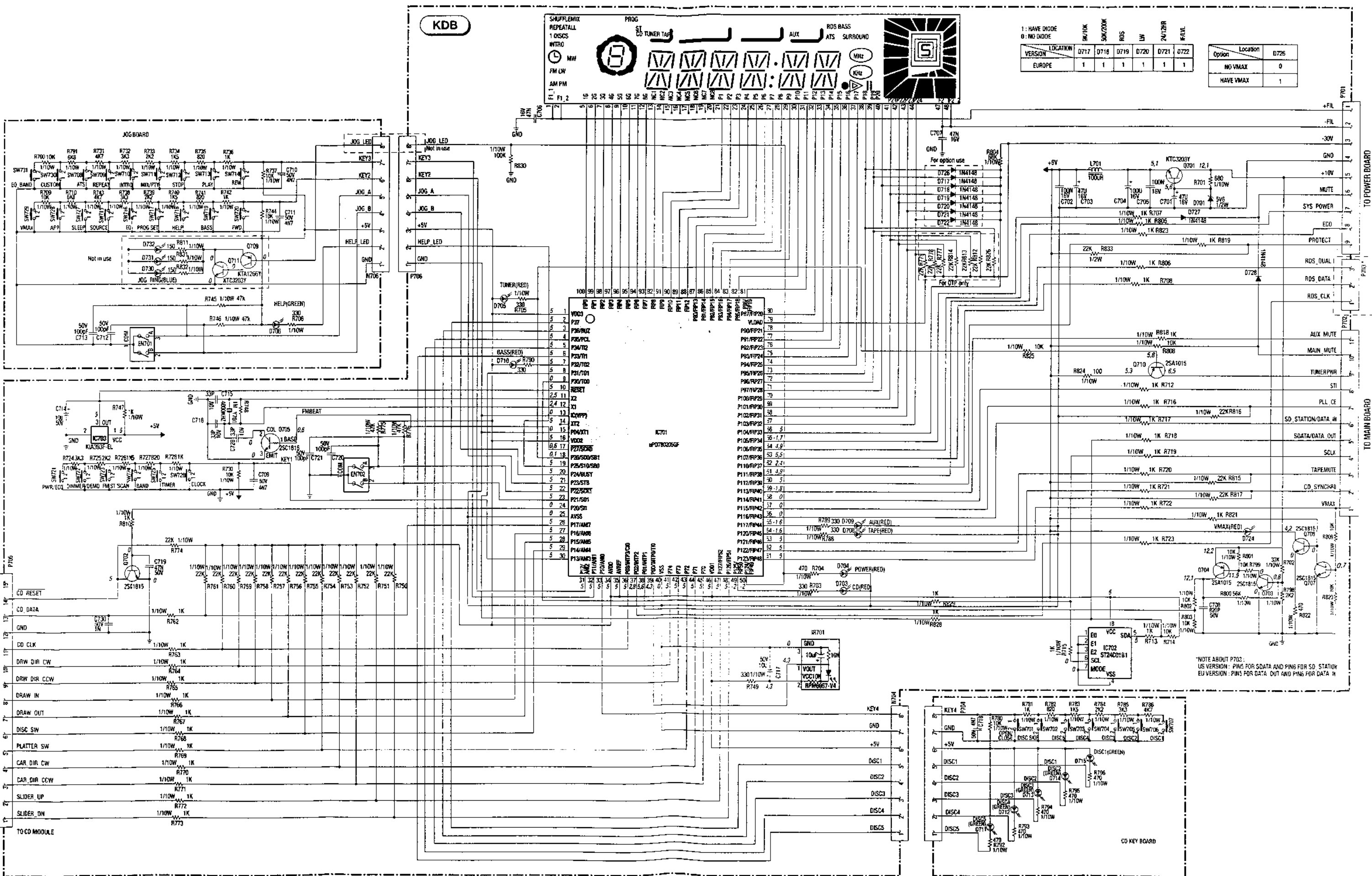


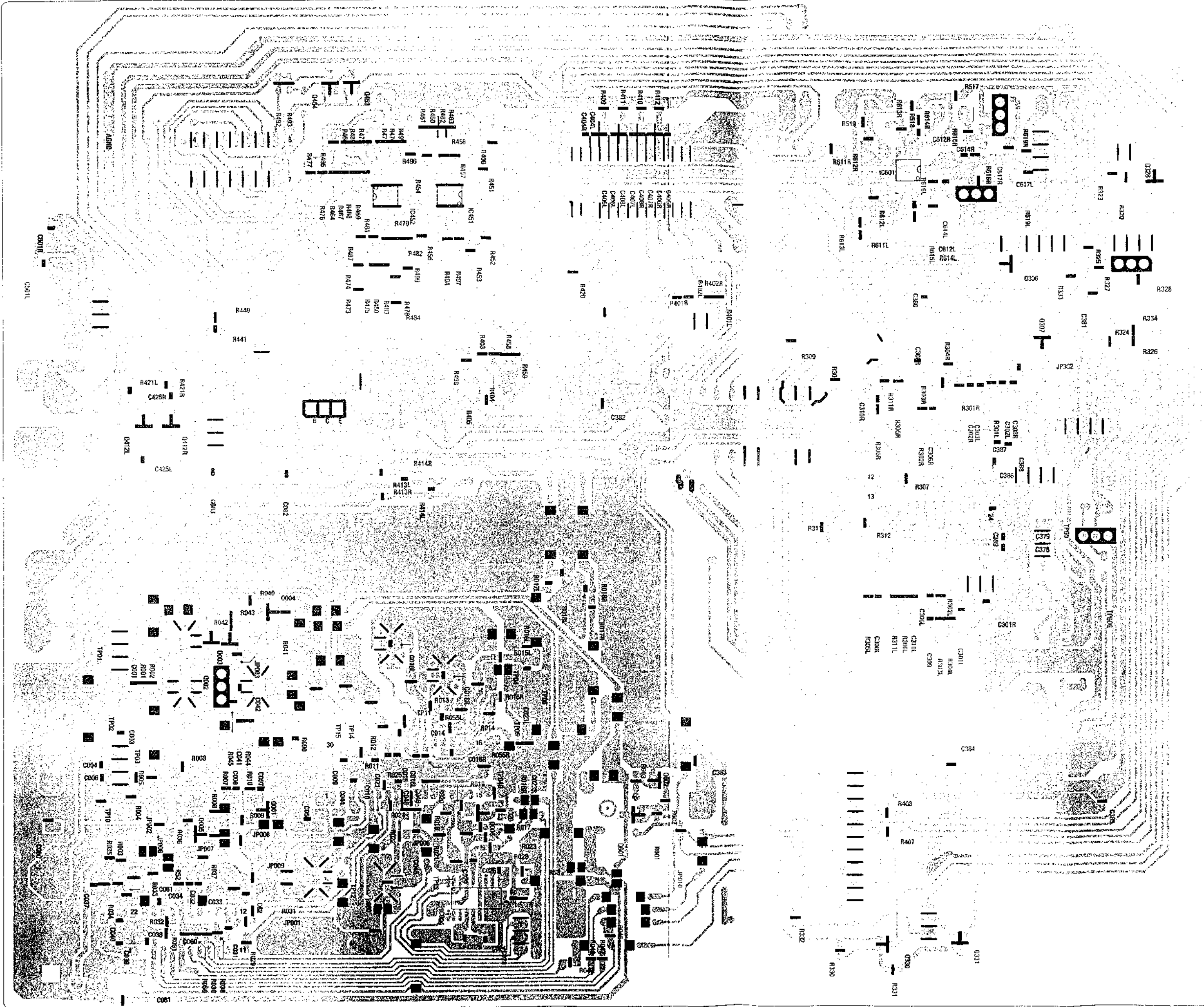
Power unit P.C.B.
Platine secteur
Ltpl. Netzanschluss
Piastra di rete
Platina de red



Controls P.C.B.
Platine commandes
Ltpl. Bedienteil
Piastra comandi
Platina de mandos

CONTROL / DISPLAY SCHEMATIC DIAGRAM - SCHEMA COMMANDES / AFFICHEUR - SCHALTBIKD BEDIENTEIL / ANZEIGE - SCHEMA COMANDI / INDICATORE - ESQUEMA MANDOS / INDICADOR





Main P.C.B.
 Platine principale
 Hauptplatine
 Piastra principale
 Platina principal

Solder side
 Côté cuivre
 Lötseite
 Lato saldature
 Lado de cobre

Schematic Diagram :
 Please refer to ALTIMA 3000/3005
 Service Manual Par N° 351 148 50.

Schema de principe :
 Se referir a la documentación técnica
 ALTIMA 3000/3005 código : 351 148 50.

Schaltbild :
 Bitte schlagen Sie im ALTIMA 3000/3005
 Technische Dokumentation 351 148 50 nach

Schema :
 Consultare la documentazione tecnica del telefono
 ALTIMA 3000/3005, codice : 351 148 50.

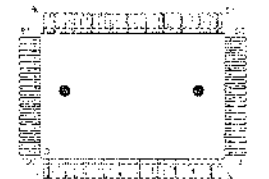
Esquema :
 Referirse a la documentación técnica de
 ALTIMA 3000/3005, código : 351 148 50.



2SD 2012



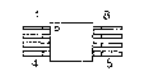
KTA 1266Y
 KTC 3203Y
 2SA 966



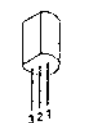
µPD 78020GF



KRS 107S



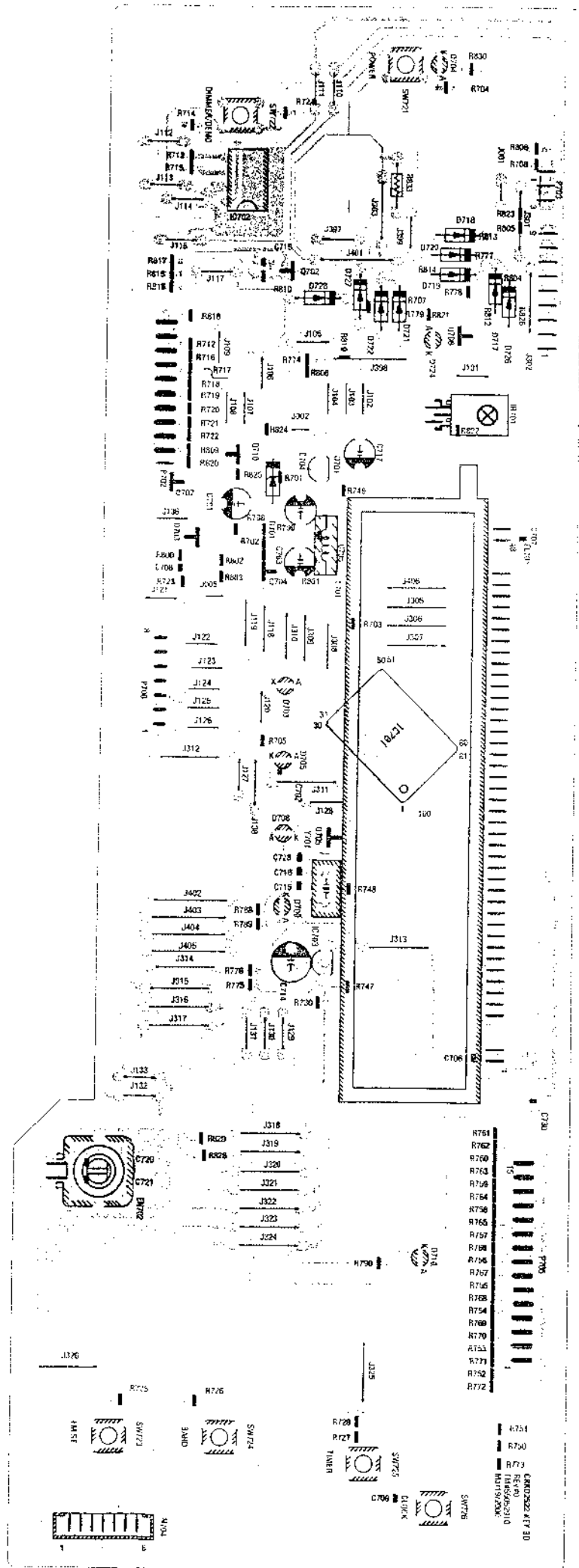
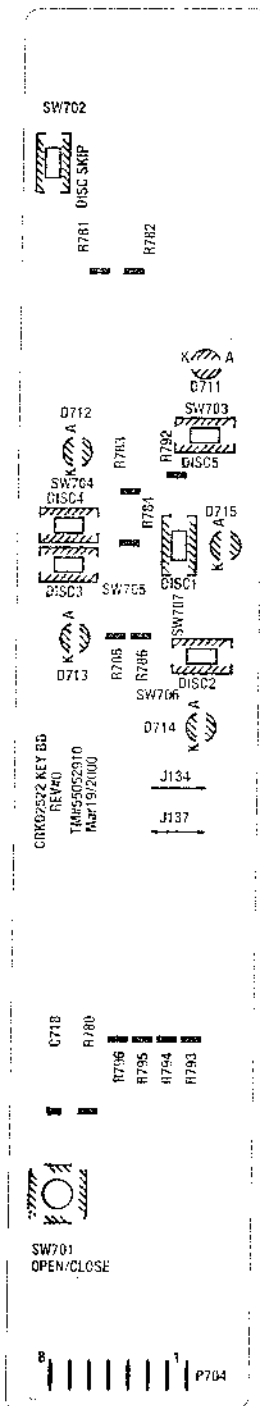
ST 24C01B1



KIA 393F EL

Controls / display P.C.B.
 Platine commandes / afficheurs
 Ltpl. Bedienteil / Anzeige
 Piastra comandi / indicatori
 Platina de mandos / indicadores

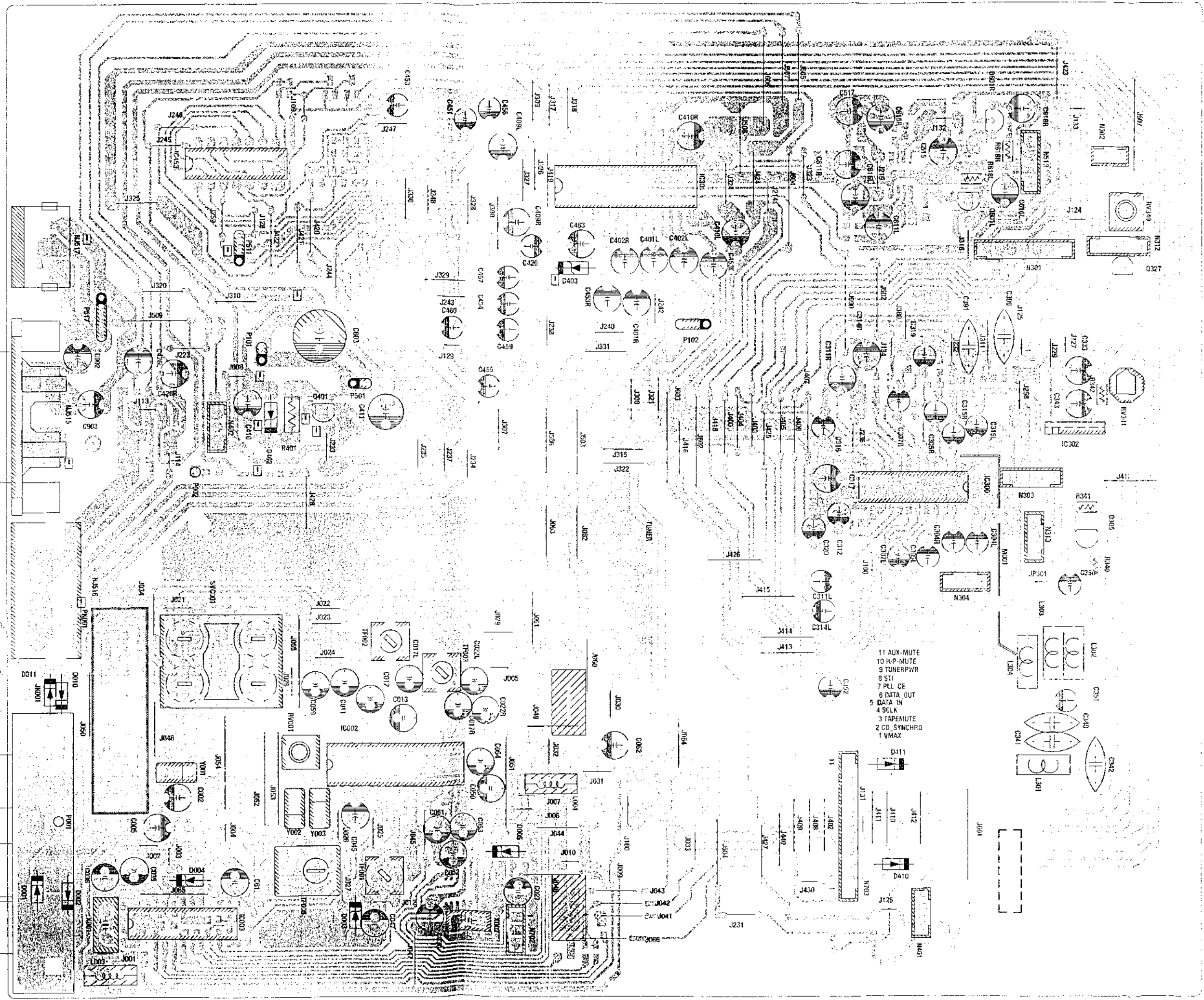
CD control P.C.B.
 Platine commandes CD
 Ltpl. CD Bedienteil
 Piastra comandi CD
 Platina de mandos CD



Main P.C.B.
 Platine principale
 Hauptplatine
 Piastra principale
 Platina principal

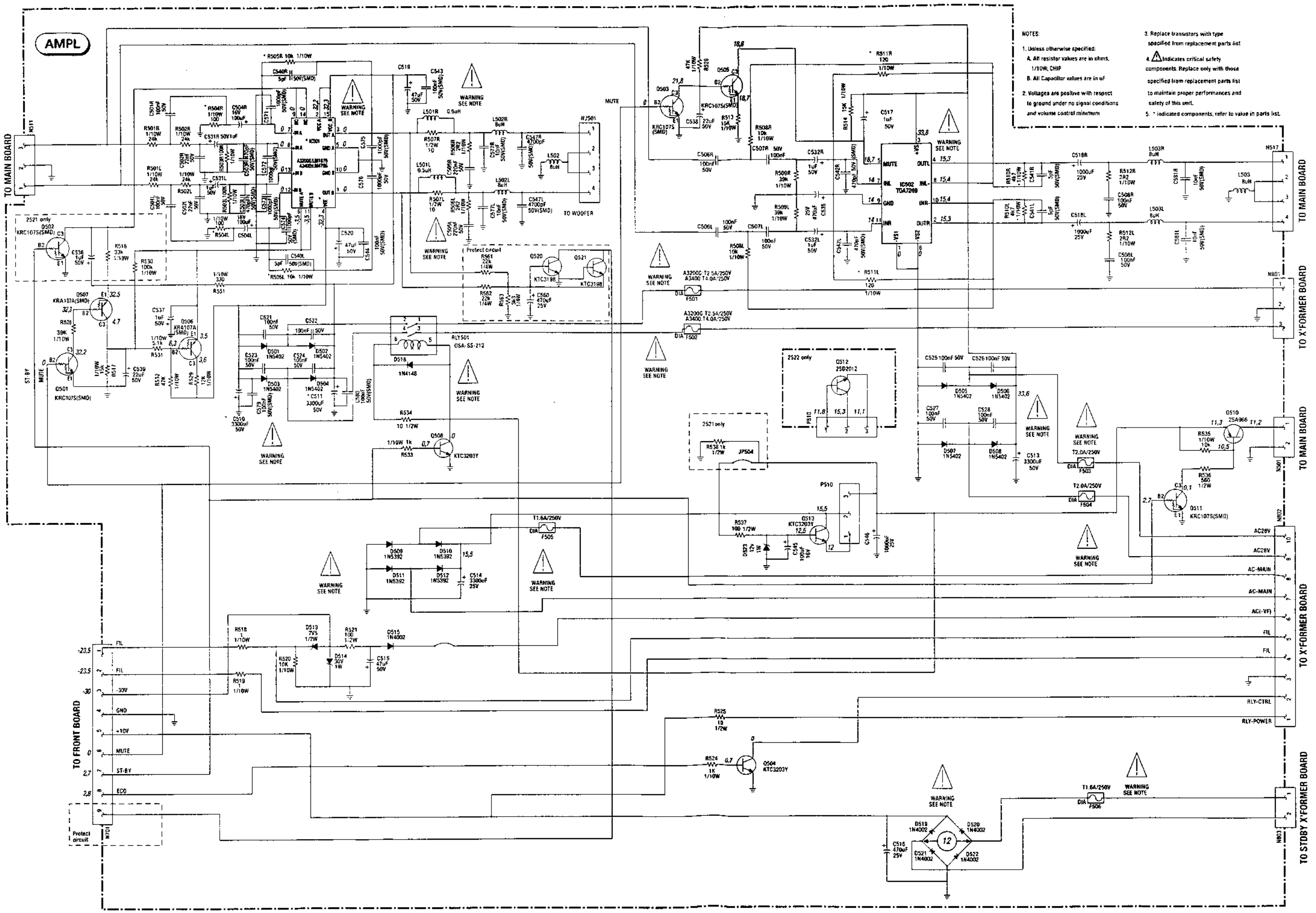
Component side
 Côte composants
 Bestückungsseite
 Lato componenti
 Lado componentes

Schematic Diagram :
 Please refer to ALTIMA
 3000-3005 Service Manual
 Part No. 351 148 50.
 Schema de principe :
 Se referer à la documentation
 technique ALTIMA 3000-3005
 code : 351 148 50.
 Schaltbild :
 Bitte schlagen Sie im ALTIMA
 3000-3005 Technische
 Dokumentation 351 148 50 nach.
 Schema :
 Consultare la documentazione
 tecnica del telaio ALTIMA
 3000-3005, codice : 351 148 50.
 Esquema :
 Referirse a la documentación
 técnica del ALTIMA 3000/3005,
 código : 351 148 50



- 11 AUX-MUTE
- 10 H.P.-MUTE
- 9 TUNER PWR
- 8 STI
- 7 PLL CE
- 6 DATA OUT
- 5 DATA IN
- 4 SCLK
- 3 TAPE MUTE
- 2 CD SYNCHRO
- 1 VMAX

AMPLIFIER SCHEMATIC DIAGRAM - SCHEMA DE L'AMPLIFICATEUR - SCHALTBILD ENDVERSTÄRKER - SCHEMA AMPLIFICATORE - ESQUEMA DEL AMPLIFICADOR

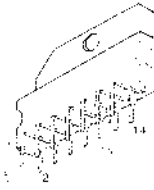


- NOTES:
1. Unless otherwise specified:
A. All resistor values are in ohms, 1/10W, CHIP
B. All Capacitor values are in μ F
 2. Voltages are positive with respect to ground under no signal conditions and volume control minimum
 3. Replace transistors with type specified from replacement parts list
 4. Δ Indicates critical safety components. Replace only with those specified from replacement parts list to maintain proper performance and safety of this unit.
 5. * indicated components, refer to value in parts list.

Amplifier P.C.B.
 Platine amplificator
 Ltpl. Endverstärker
 Piastra amplificatore
 Platina amplificador



TDA 7269



LM 4766

